

V&V Reference Report

L2 ASCDS Version : 8.4.5

Observation 1584 - L2 Version 3
Chandra X-Ray Center

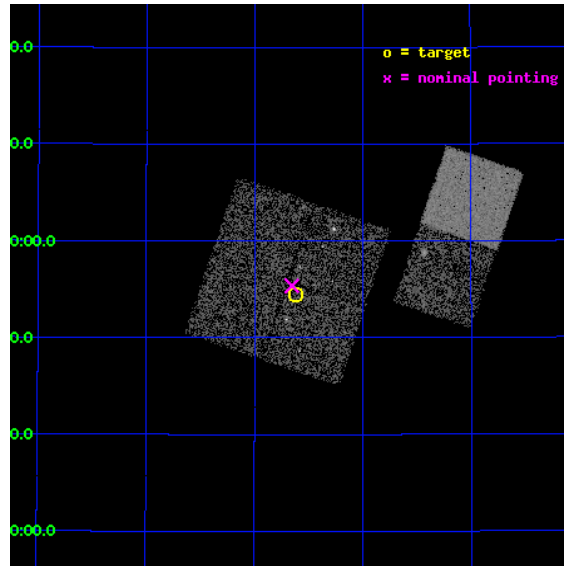
L2 Processing Date : Sep 20 2012

Contents

1	Front	2
2	OBI	3
2.1	OBI	3
2.1.1	Images	3
2.1.2	Bias	3
2.1.3	Parameters	4
2.1.4	Events	4
2.2	Compared Parameters	5
2.3	Aspect	6
2.4	Star Slots	9
2.4.1	Slot 3	9
2.4.2	Slot 4	10
2.4.3	Slot 5	11
2.4.4	Slot 6	12
2.4.5	Slot 7	13
2.5	FID Slots	14
2.5.1	Slot 0	14
2.5.2	Slot 1	15
2.5.3	Slot 2	16
A	Summary	17
A.1	Status	17
A.2	Comments	17

1 Front

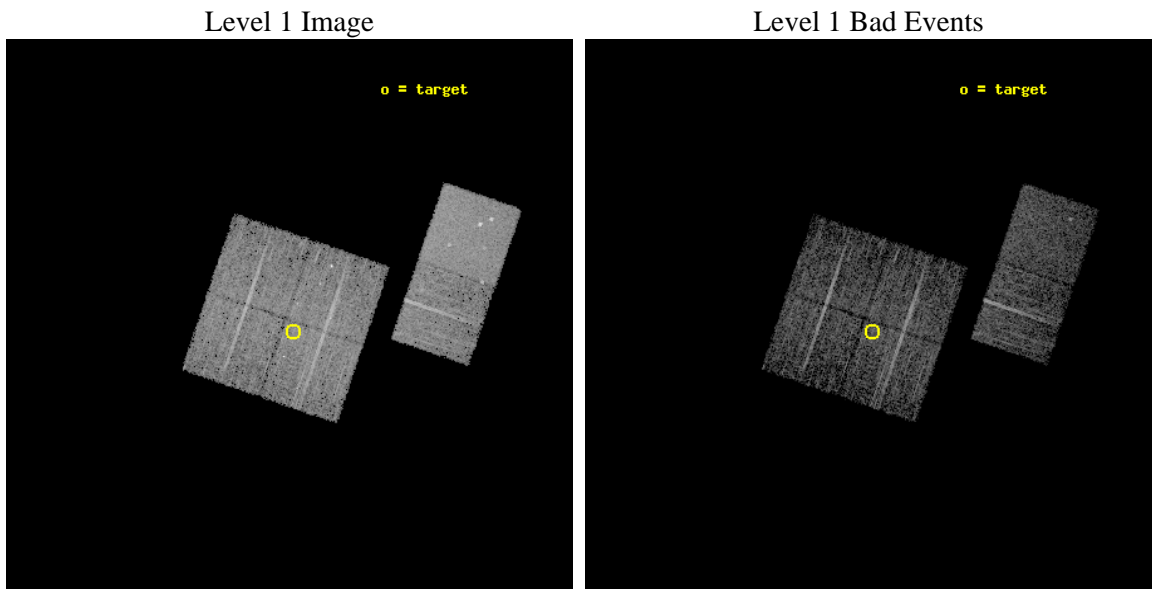
seq_num	600141	Sequence number
obs_id	1584	Observation id
title	MONITORING THE M31 NUCLEAR REGION	Proposal title
observer	Dr. Stephen Murray	Principal investigator
object	M31 NUCLEUS	Source name
dtcycle	0	
cycle	P	events from which exps? Prim/Second/Both
ra_targ	10.65625	Observer's specified target RA [deg]
dec_targ	40.9075	Observer's specified target Dec [deg]
ra_nom	10.663619898953	Nominal RA [deg]
dec_nom	40.922839312937	Nominal Dec [deg]
roll_nom	108.85460555914	Nominal Roll [deg]
revision	3	Processing version of data
ontime	4963.2000046074	Sum of GTIs [s]
livetime	4900.3529776688	Livetime [s]
ontime0	4963.2000046074	Sum of GTIs [s]
ontime1	4963.2000046074	Sum of GTIs [s]
ontime2	4963.2000046074	Sum of GTIs [s]
ontime3	4963.2000046074	Sum of GTIs [s]
ontime5	4963.2000046074	Sum of GTIs [s]
ontime6	4963.2000046074	Sum of GTIs [s]
l2events	37287	Number of level 2 events



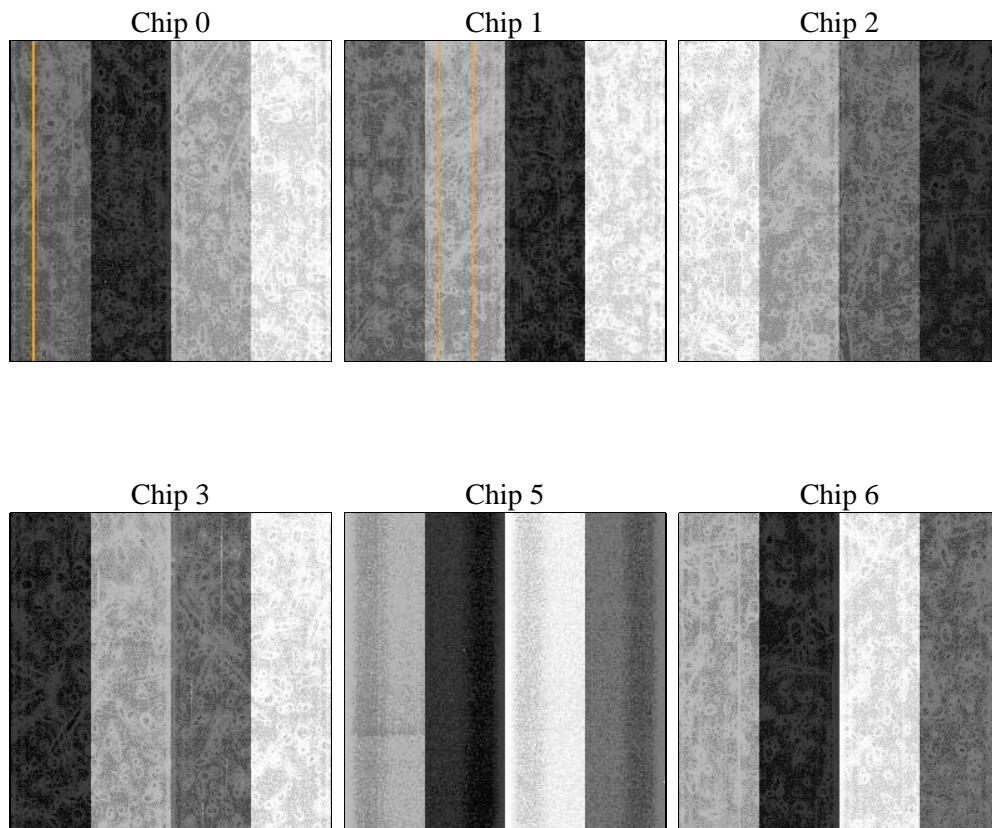
2 OBI

2.1 OBI

2.1.1 Images



2.1.2 Bias



2.1.3 Parameters

obi_num	0	Obi number	sched_exp_time	5000.000000	[s] Scheduled observation exposure time
ascdsver	8.4.5	Processing system revision	ontime	4963.2000046074	Sum of GTIs [s]
caldsver	4.5.1.1	 	ontime0	4963.2000046074	Sum of GTIs [s]
date	2012-09-20T12:38:36	Date and time of file creation	ontime1	4963.2000046074	Sum of GTIs [s]
revision	3	Processing version of data	ontime2	4963.2000046074	Sum of GTIs [s]
			ontime3	4963.2000046074	Sum of GTIs [s]
			ontime5	4963.2000046074	Sum of GTIs [s]
			ontime6	4963.2000046074	Sum of GTIs [s]
			l1events	208287	Number of level 1 events

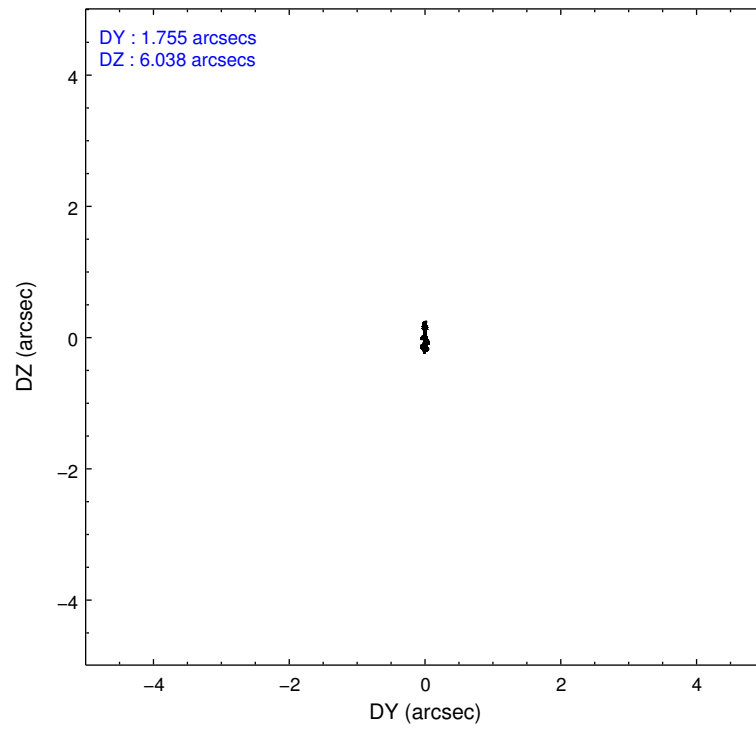
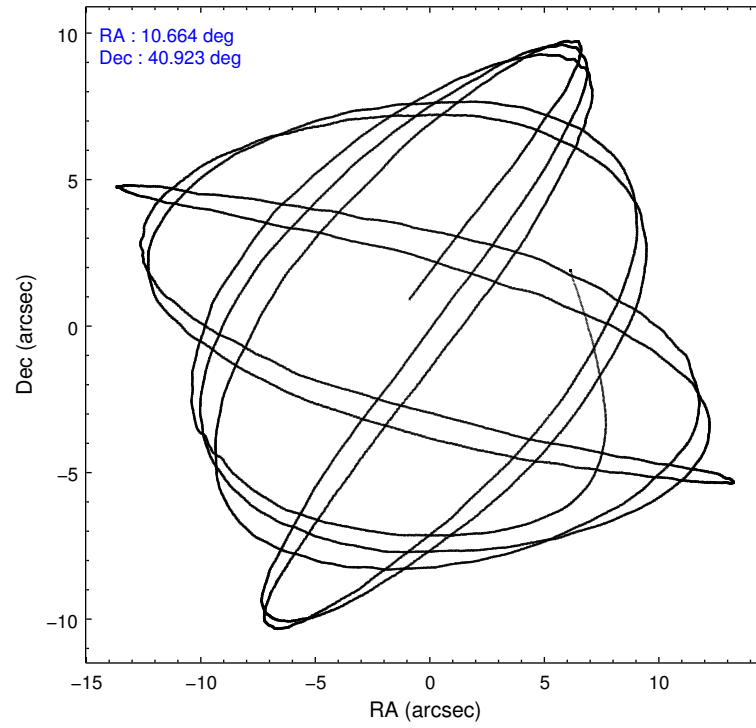
2.1.4 Events

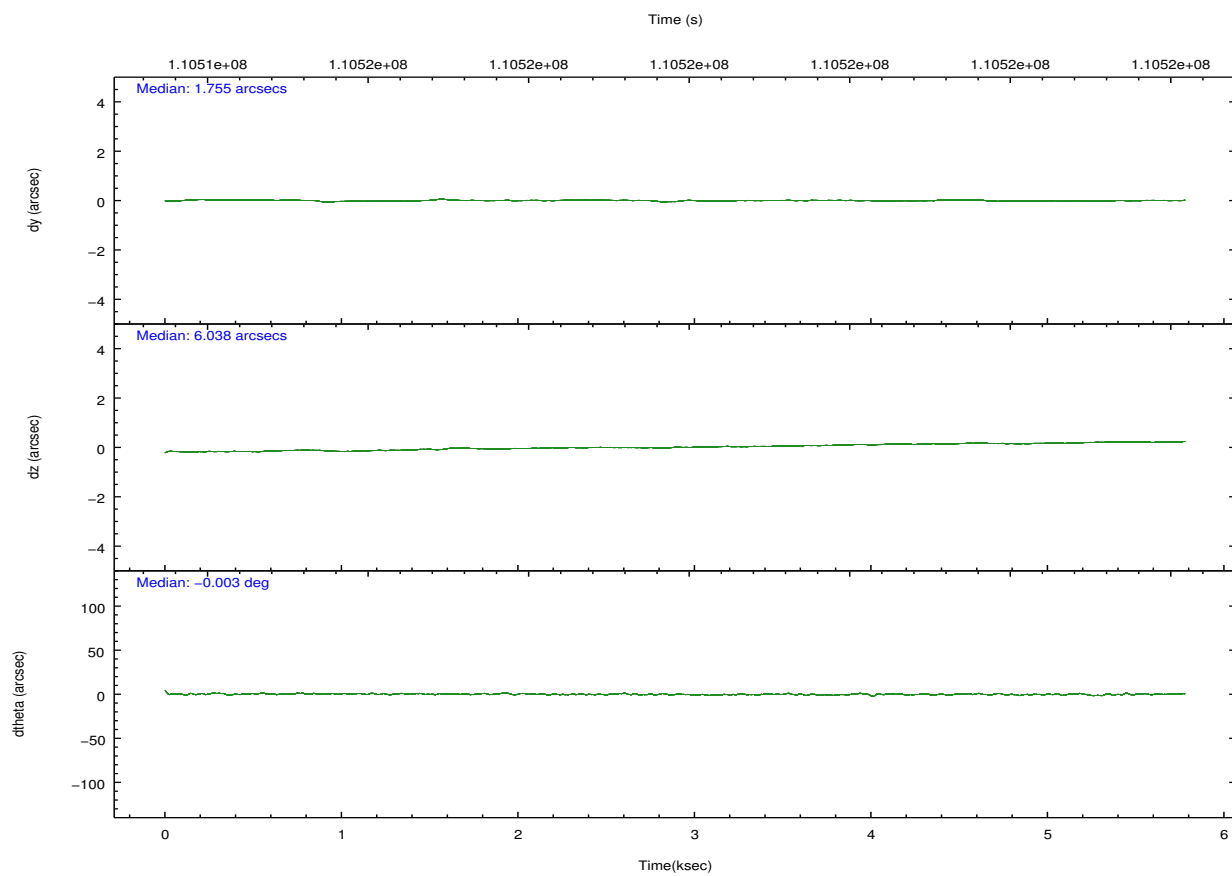
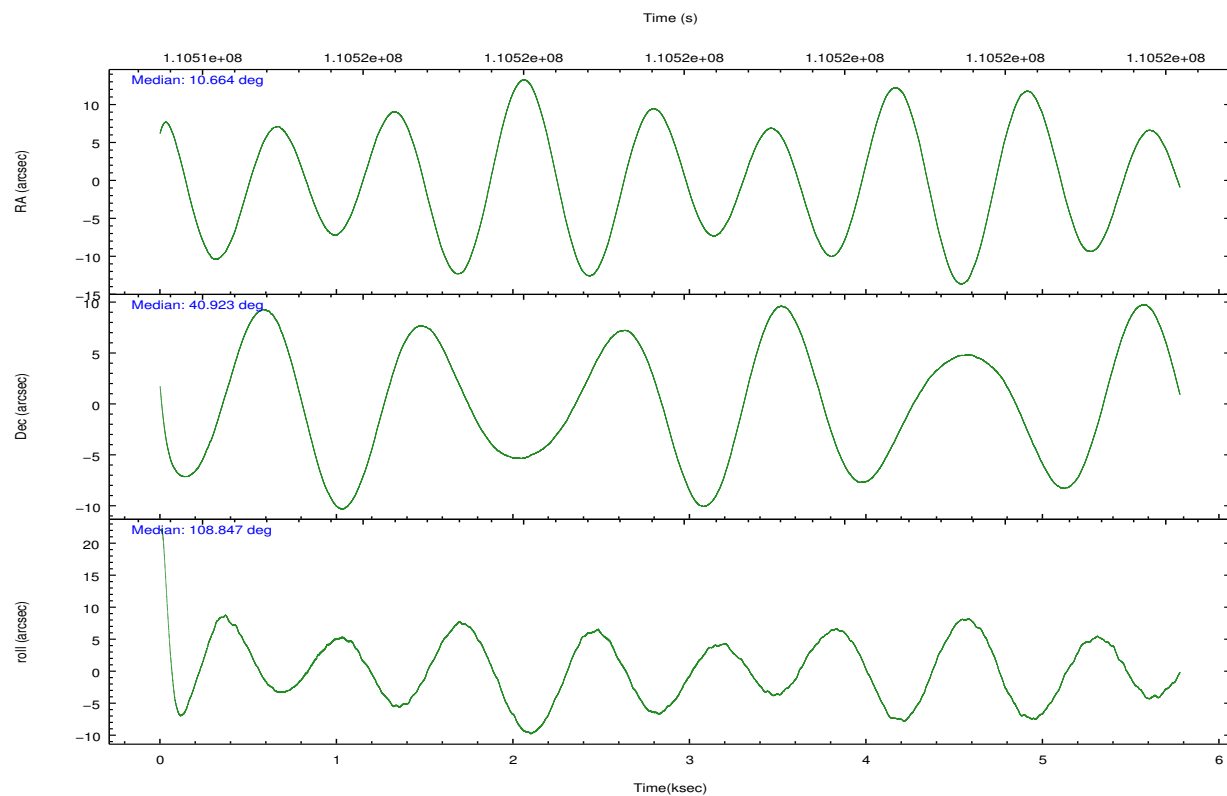
	ccd 0	ccd 1	ccd 2	ccd 3	ccd 5	ccd 6		ccd 0	ccd 1	ccd 2	ccd 3	ccd 5	ccd 6
level 1 events	30489	30385	33986	33694	46867	32866	grade 0 events	1728	1563	2492	1996	3103	1778
rejected events	26518	26473	29257	29506	25128	28843		5%	5%	7%	5%	6%	5%
rejected %	86%	87%	86%	87%	53%	87%	grade 1 events	16	13	27	26	102	19
								0%	0%	0%	0%	0%	0%
							grade 2 events	855	841	858	822	6192	748
								2%	2%	2%	2%	13%	2%
							grade 3 events	400	378	392	357	869	353
								1%	1%	1%	1%	1%	1%
							grade 4 events	359	375	337	379	846	399
								1%	1%	0%	1%	1%	1%
							grade 5 events	1125	1228	1150	1214	3580	1297
								3%	4%	3%	3%	7%	3%
							grade 6 events	633	755	654	642	10746	746
								2%	2%	1%	1%	22%	2%
							grade 7 events	25373	25232	28076	28258	21429	27526
								83%	83%	82%	83%	45%	83%

2.2 Compared Parameters

Parameter	Planned	Actual	Parameter	Planned	Actual
Instrument	ACIS	ACIS	Obspar format version number	7	7
Detector	ACIS-012356	ACIS-012356	Obspar file type	PREDICTED	ACTUAL
Grating	NONE	NONE	Obspar update status	NONE	UPDATED
Data mode	FAINT	FAINT	Number of optional ACIS chips dropped	0	0
Observation mode	POINTING	POINTING	On-chip summing requested	N	N
[deg] Pointing RA	10.691000	10.66361989895285	Subarray requested	NONE	NONE
[deg] Pointing Dec	40.904746	40.92283931293721	Alternating exposures requested	N	N
[deg] Pointing Roll	108.627920	108.8546055591376	[s] Primary exposure time	0.000000	3.2
[mm] SIM focus pos	-0.782348	-0.7809083437167272			
[mm] SIM defocus	0	0.001439871863259334			
[mm] SIM translation stage pos	-233.592463	-233.5874344608287			
[mm] SIM translation stage offset	0	-0.005018542100998502			
[s] Observation start time (MET)	110514803.184000	110513541.01373			
Observation start date	2001-07-03T02:32:19	2001-07-03T02:12:21			
[s] Observation end time (MET)	110519803.184000	110519952.90148			
Observation end date	2001-07-03T03:55:39	2001-07-03T03:59:12			
Read mode	TIMED	TIMED			

2.3 Aspect



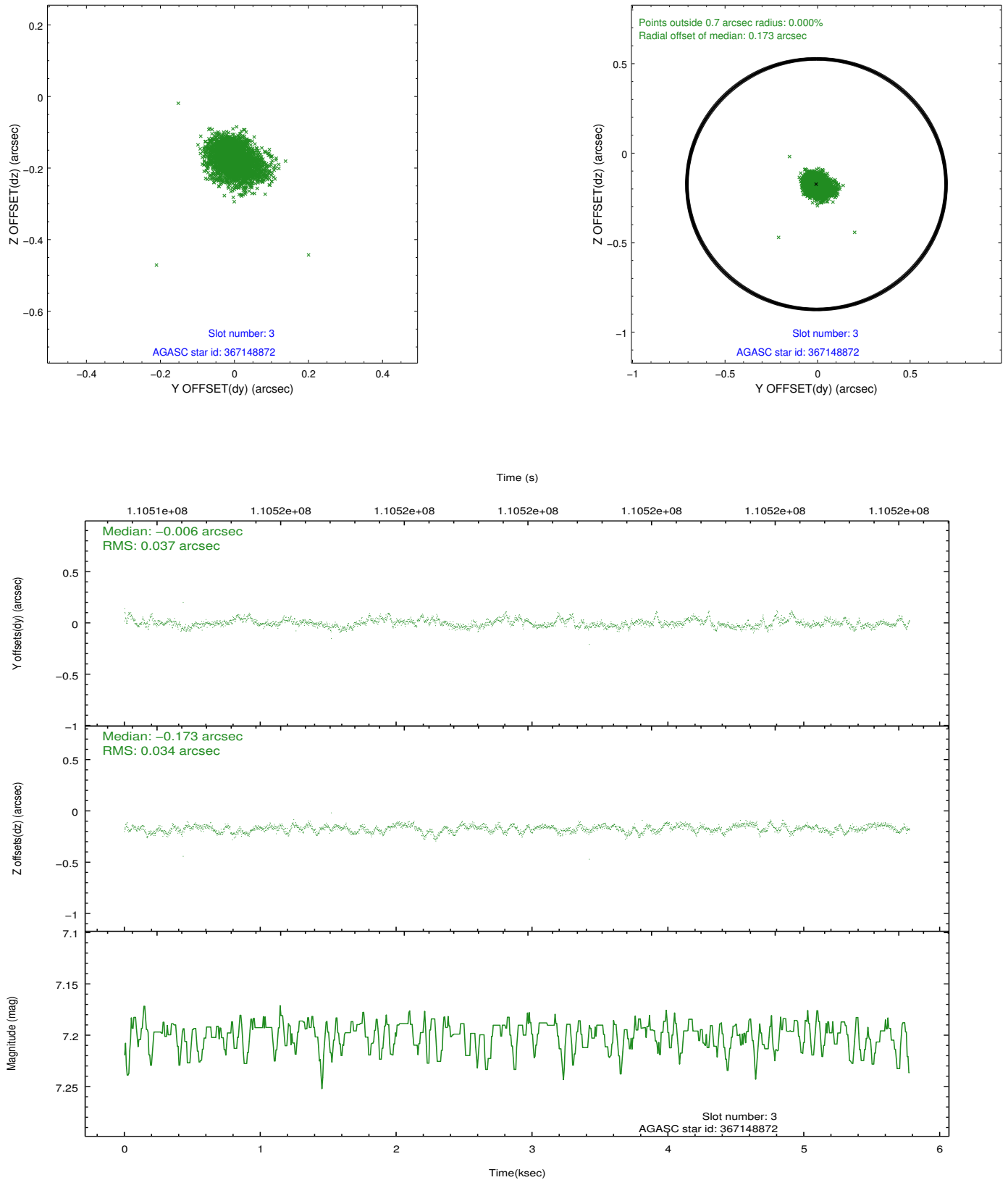


Slot Statistics

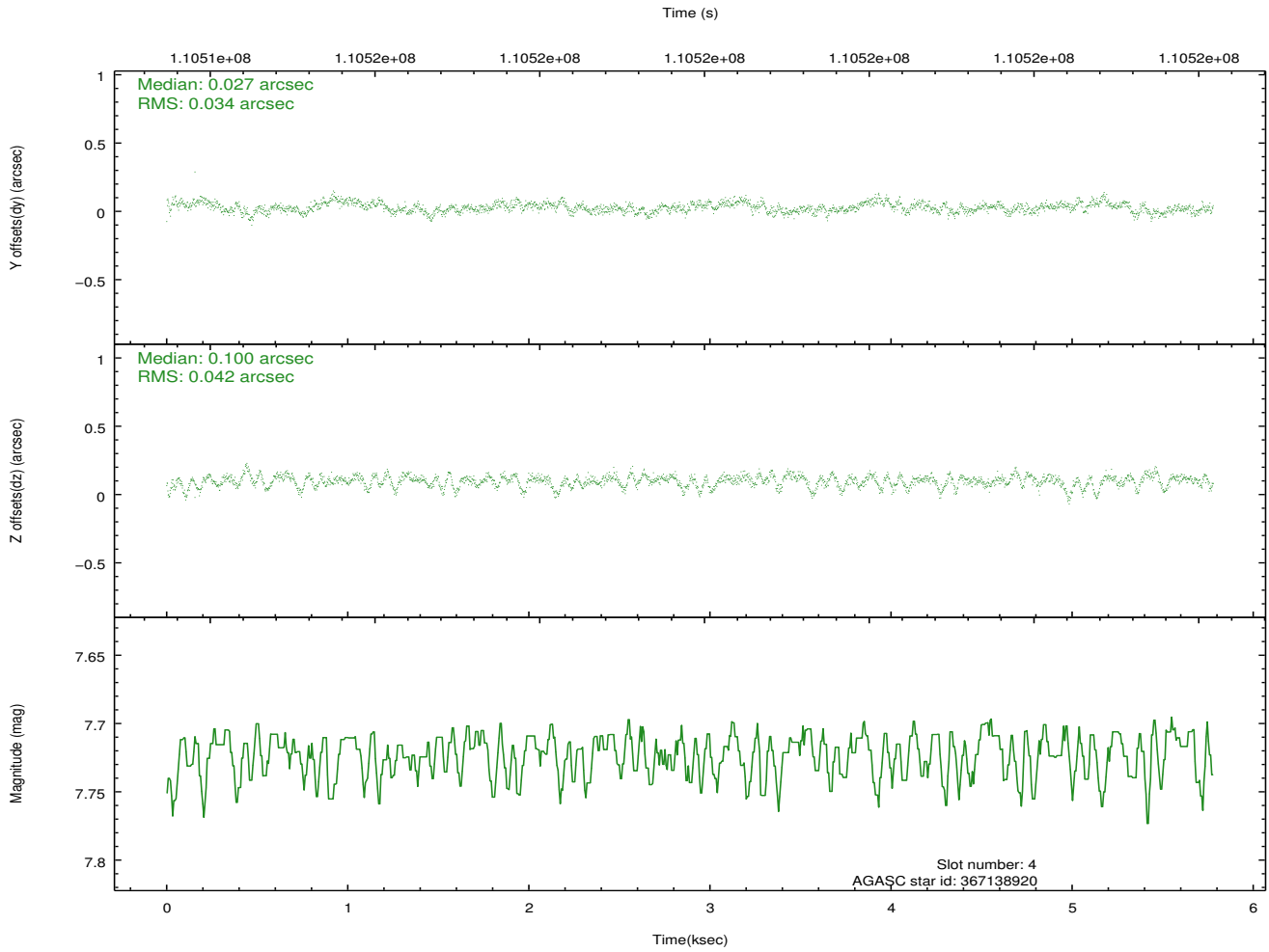
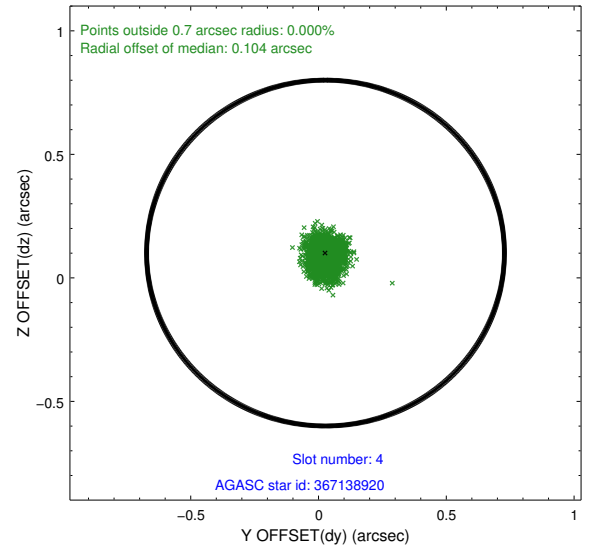
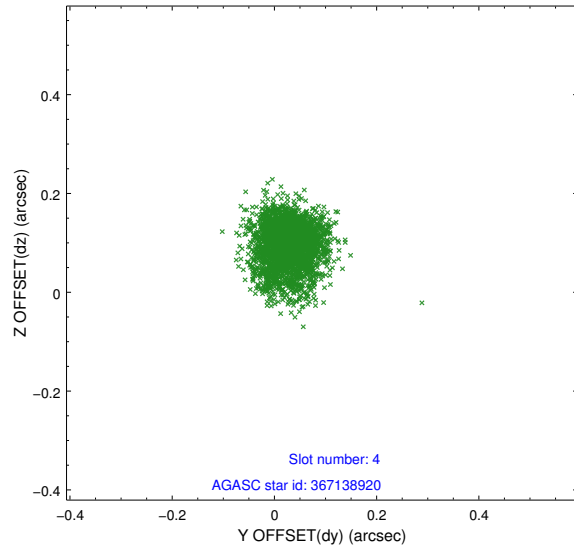
slot	status	id	mag	n_pts	med_dy	med_dz	dr1	dr2	ra	dec	mean_y	mean_z
0	FID	ACIS-I-2	7.15	1410	-0.032	-0.067	0.010	0.017	0.000000	0.000000	-756.12	-835.86
1	FID	ACIS-I-4	7.18	1409	-0.025	0.045	0.006	0.010	0.000000	0.000000	2157.46	1069.93
2	FID	ACIS-I-5	7.23	1410	-0.045	0.091	0.009	0.015	0.000000	0.000000	-1808.65	1068.97
3	GUIDE	367148872	7.20	2819	-0.006	-0.173	0.051	0.087	10.505940	40.688258	-577.57	727.55
4	GUIDE	367138920	7.72	2820	0.027	0.100	0.057	0.097	11.513485	40.808909	-1033.60	-2016.47
5	GUIDE	367139768	7.98	2820	0.037	0.061	0.051	0.086	11.069715	40.685175	-1078.15	-728.44
6	GUIDE	367144424	8.65	2819	0.184	-0.150	0.062	0.098	10.464515	40.309136	-1833.62	1273.49
7	GUIDE	367674552	8.85	2819	-0.245	0.167	0.082	0.130	11.016238	41.570845	1992.70	-1595.47

2.4 Star Slots

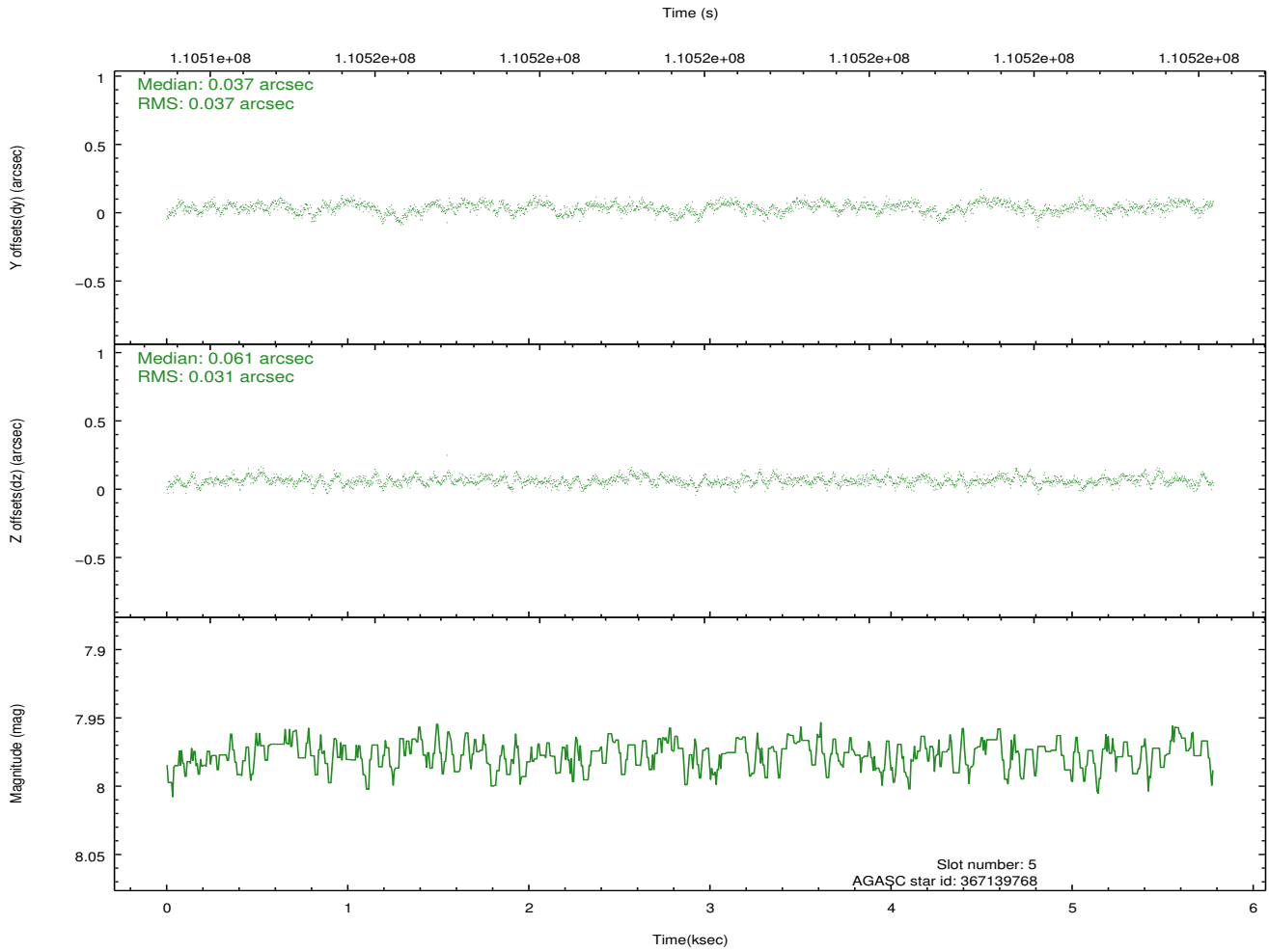
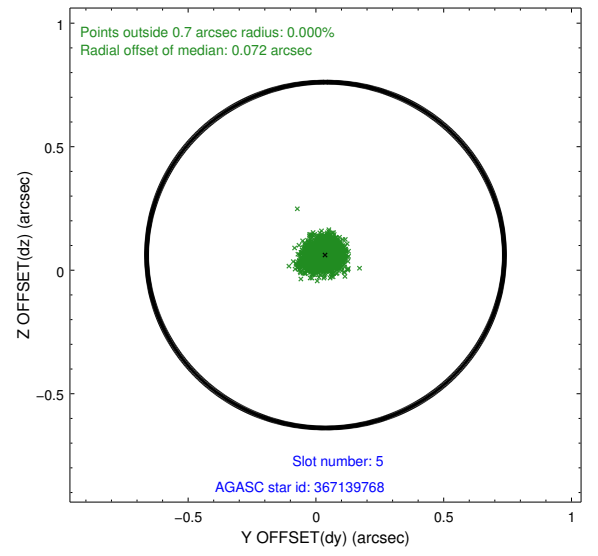
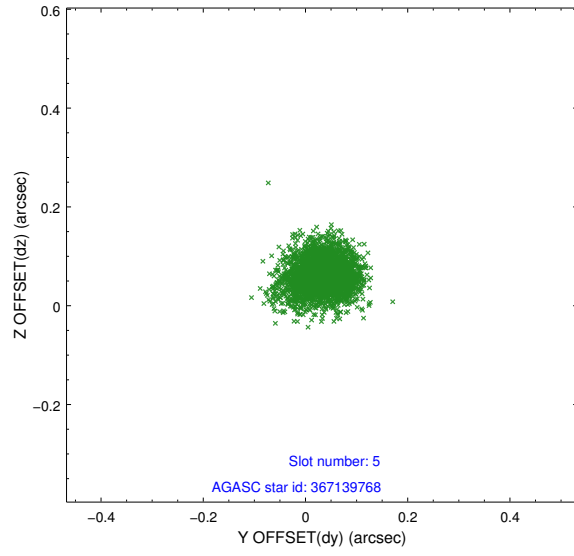
2.4.1 Slot 3



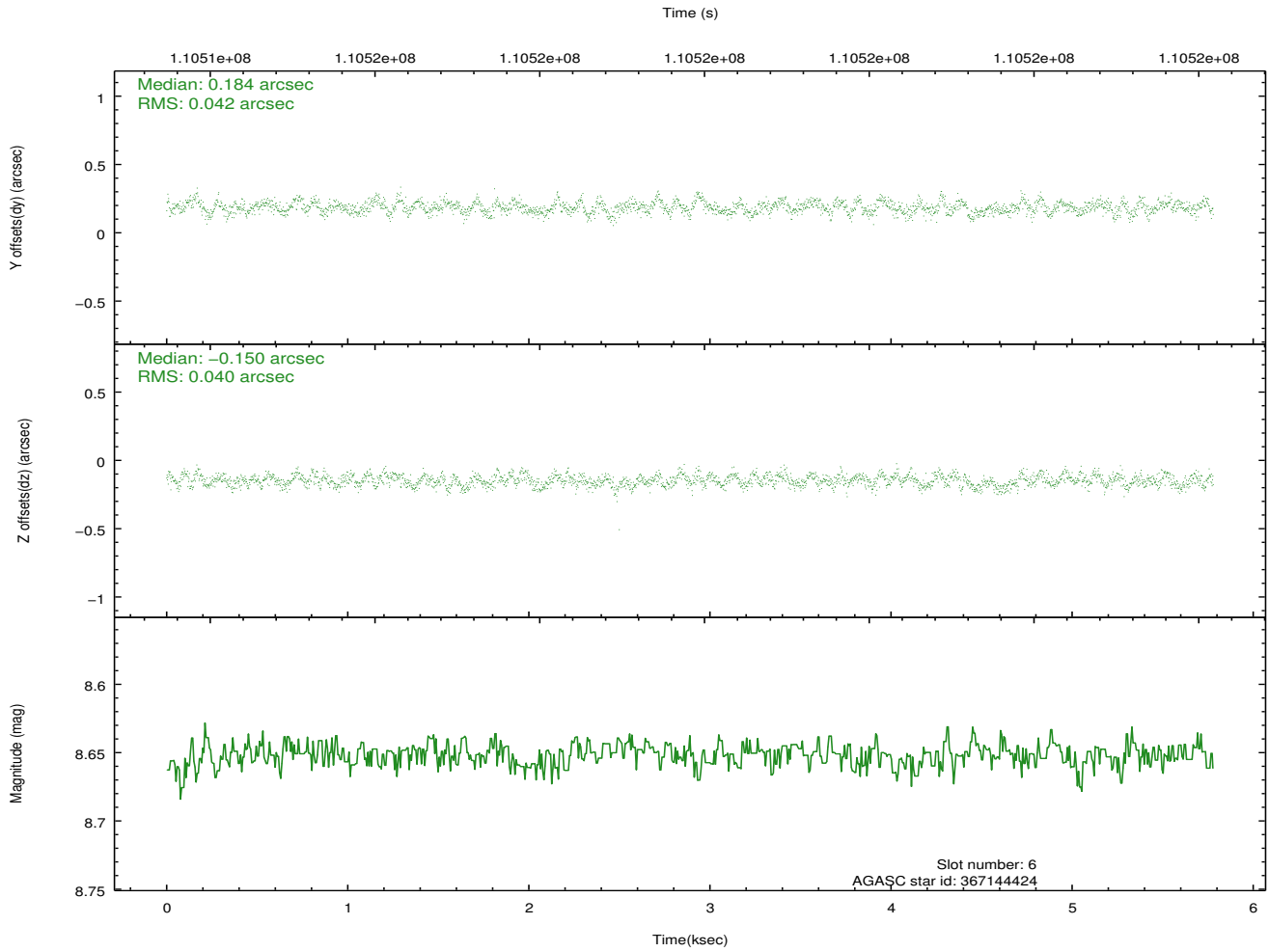
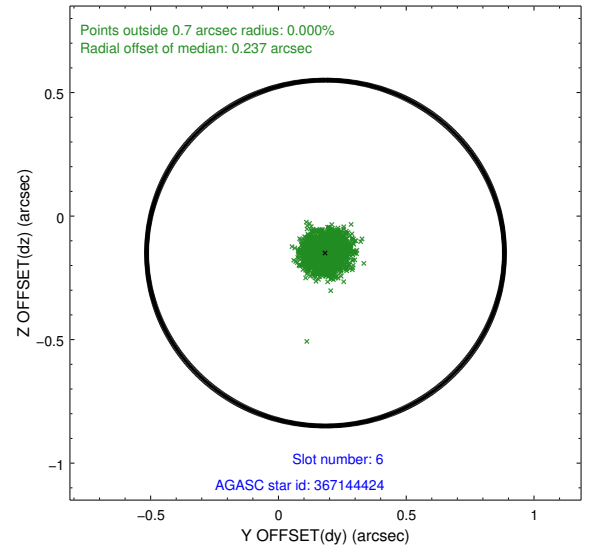
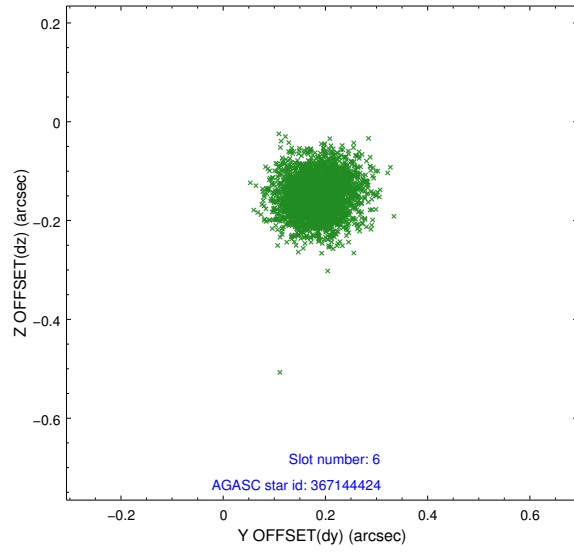
2.4.2 Slot 4



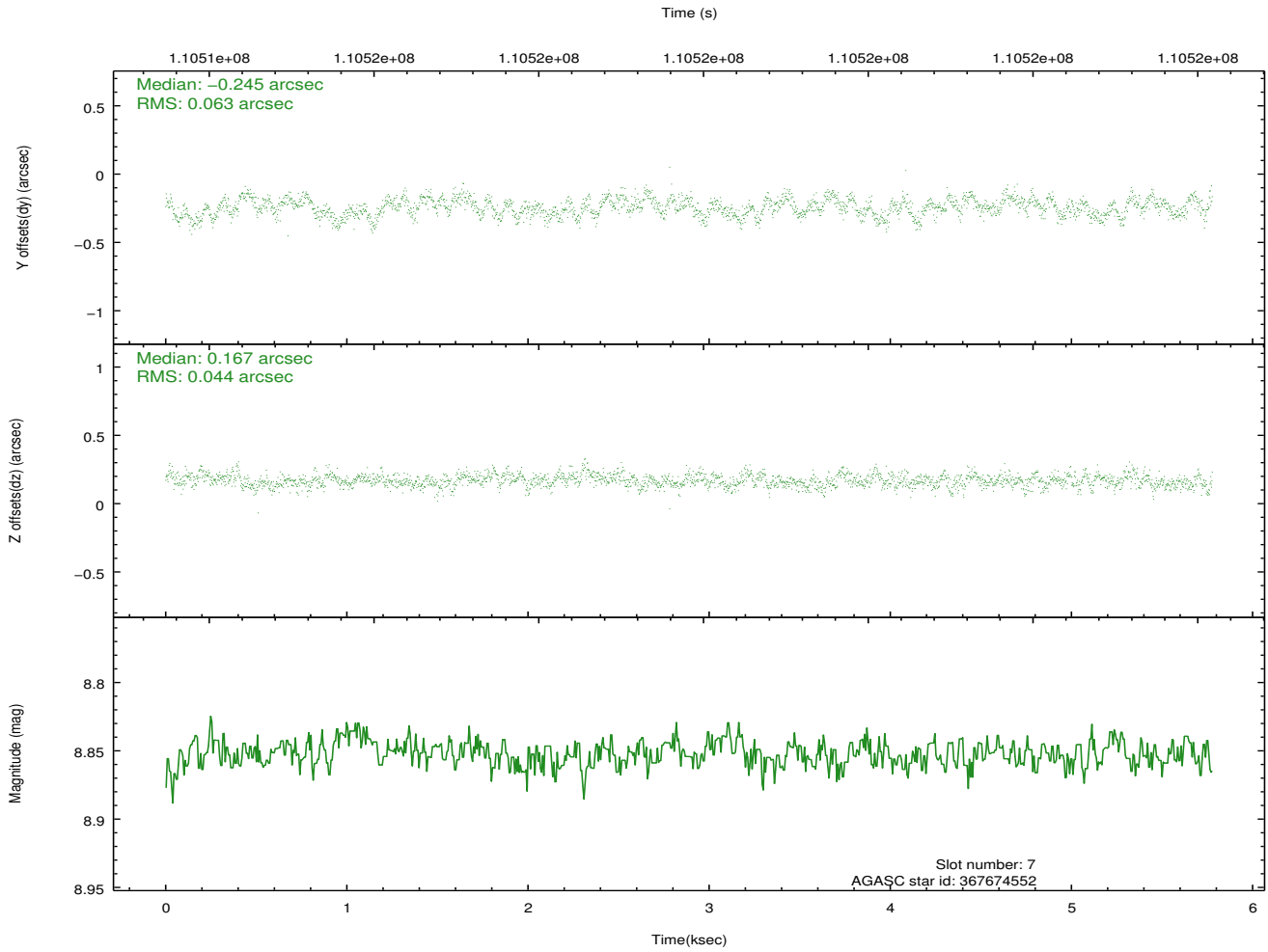
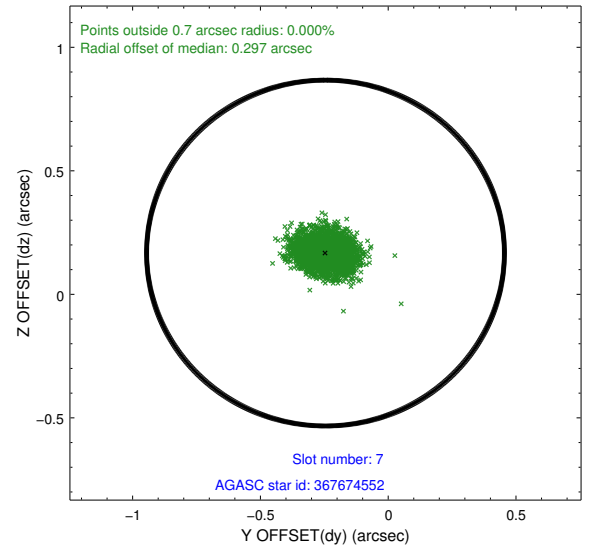
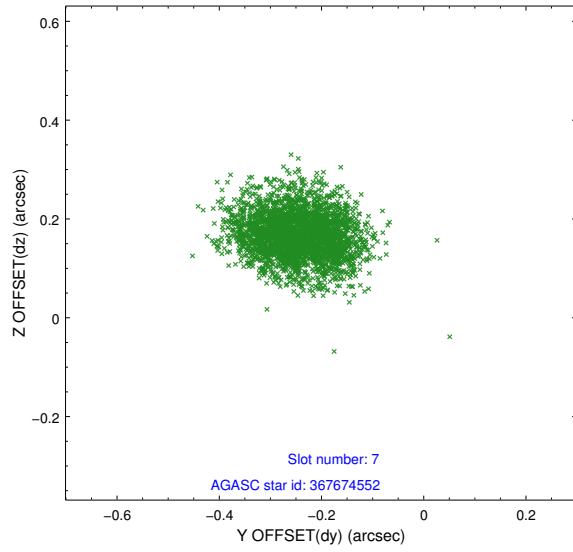
2.4.3 Slot 5



2.4.4 Slot 6

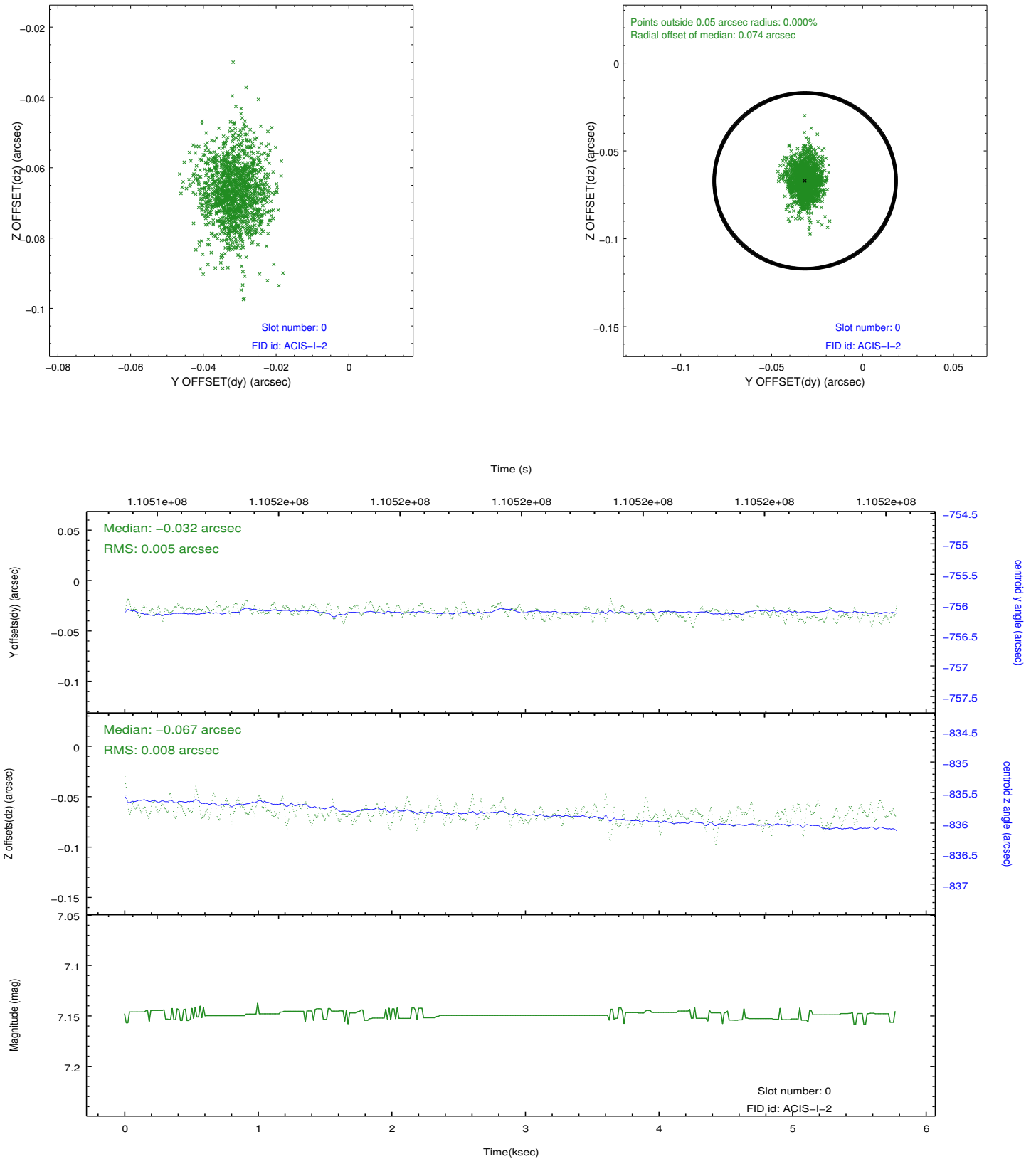


2.4.5 Slot 7

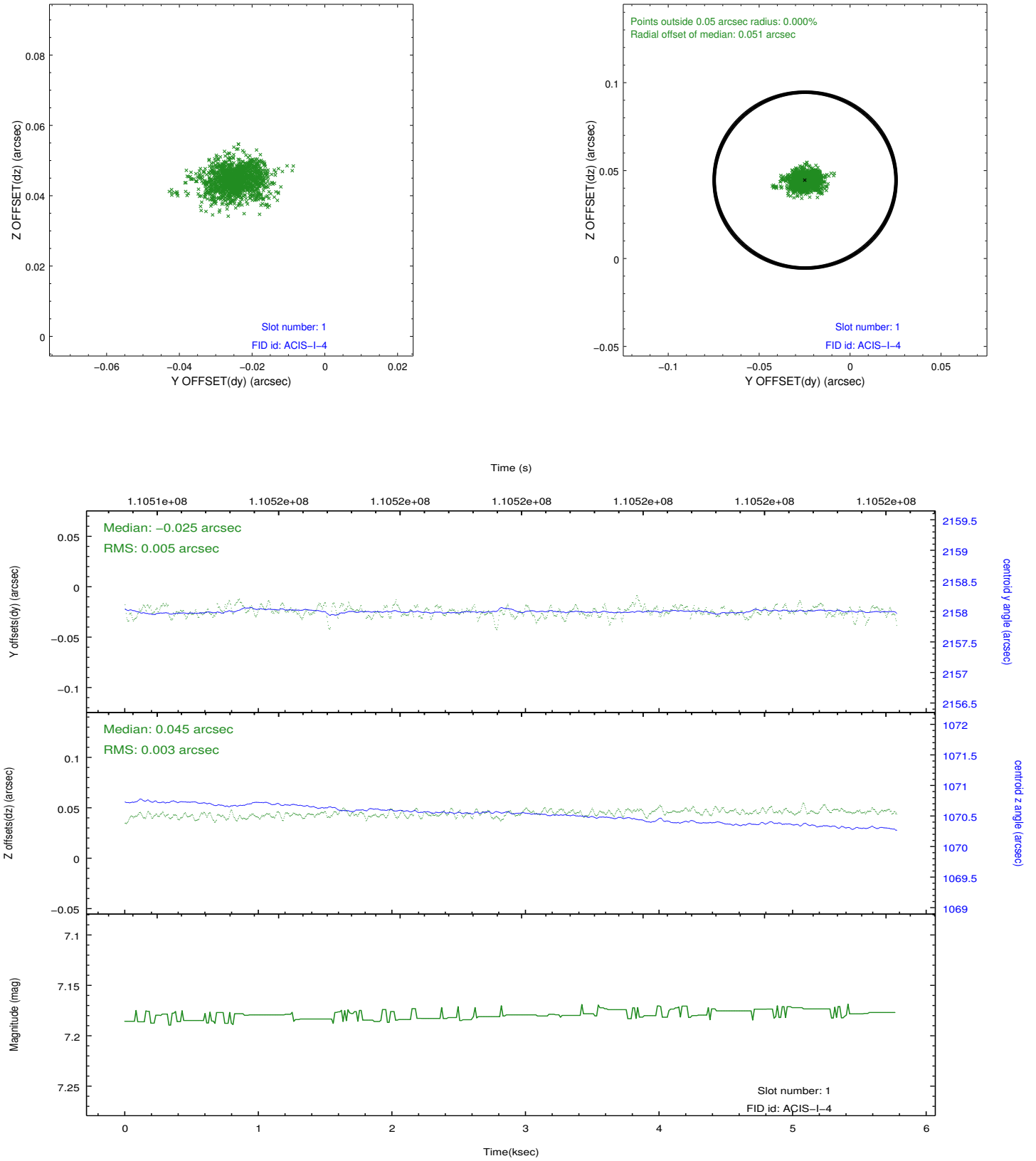


2.5 FID Slots

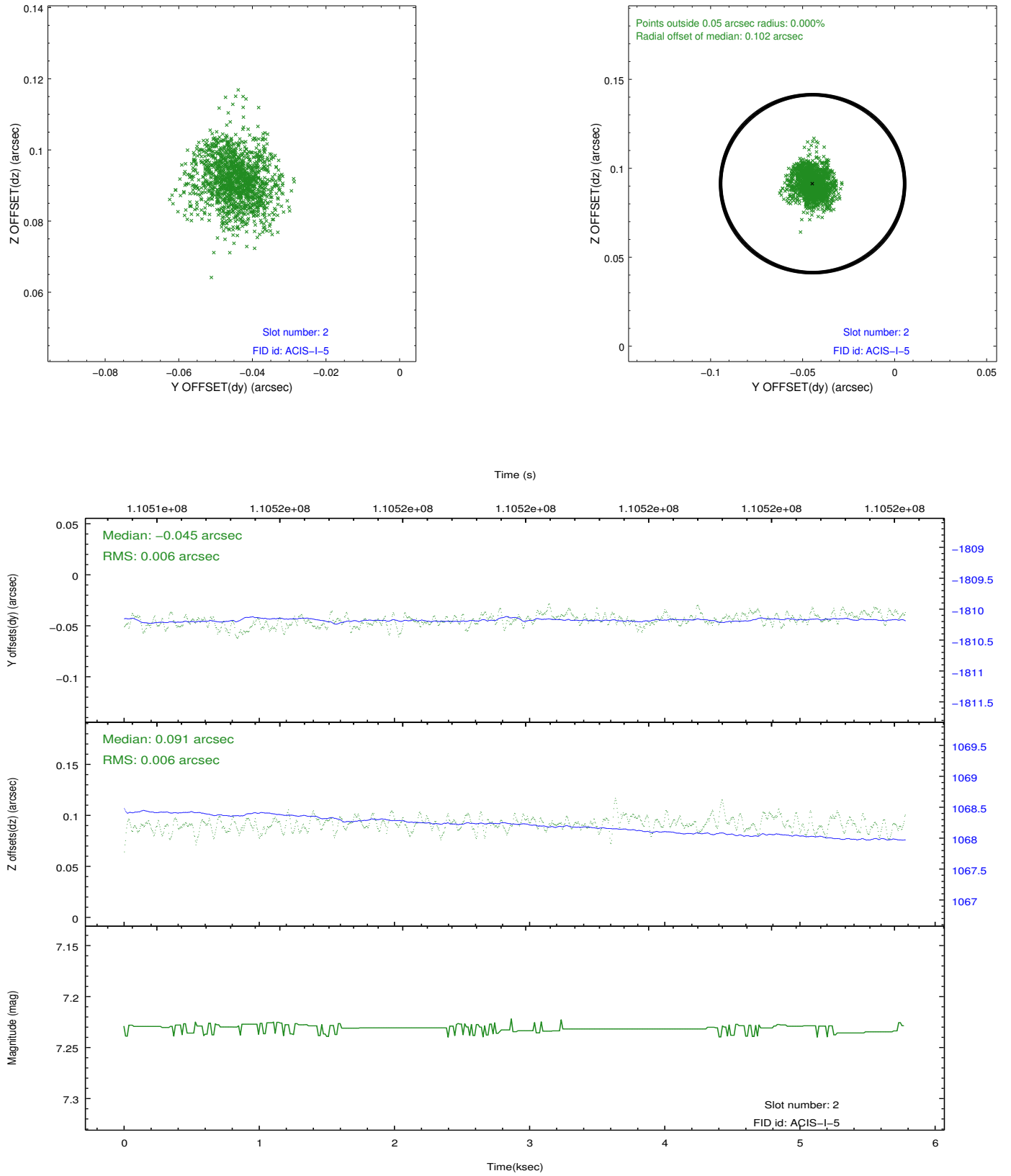
2.5.1 Slot 0



2.5.2 Slot 1



2.5.3 Slot 2



A Summary

A.1 Status

V&V Scientist	Beth Sundheim
V&V Date (YYYY-MM-DD)	2012.09.21
V&V Edition	1
V&V Disposition and Status	OK
V&V Charge Time	4.966

A.2 Comments