

V&V Reference Report

L2 ASCDS Version : 8.4.5

Observation 1579 - L2 Version 3
Chandra X-Ray Center

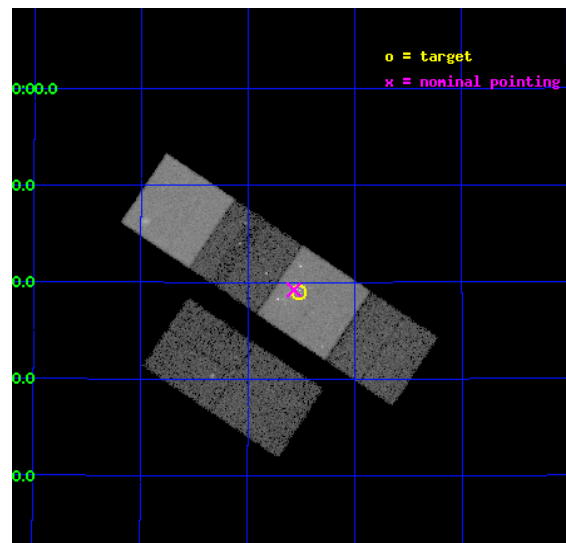
L2 Processing Date : Sep 3 2012

Contents

1	Front	2
2	OBI	3
2.1	OBI	3
2.1.1	Images	3
2.1.2	Bias	3
2.1.3	Parameters	4
2.1.4	Events	4
2.2	Compared Parameters	5
2.3	Aspect	6
2.4	Star Slots	9
2.4.1	Slot 3	9
2.4.2	Slot 4	10
2.4.3	Slot 5	11
2.4.4	Slot 6	12
2.4.5	Slot 7	13
2.5	FID Slots	14
2.5.1	Slot 0	14
2.5.2	Slot 1	15
2.5.3	Slot 2	16
A	Summary	17
A.1	Status	17
A.2	Comments	17

1 Front

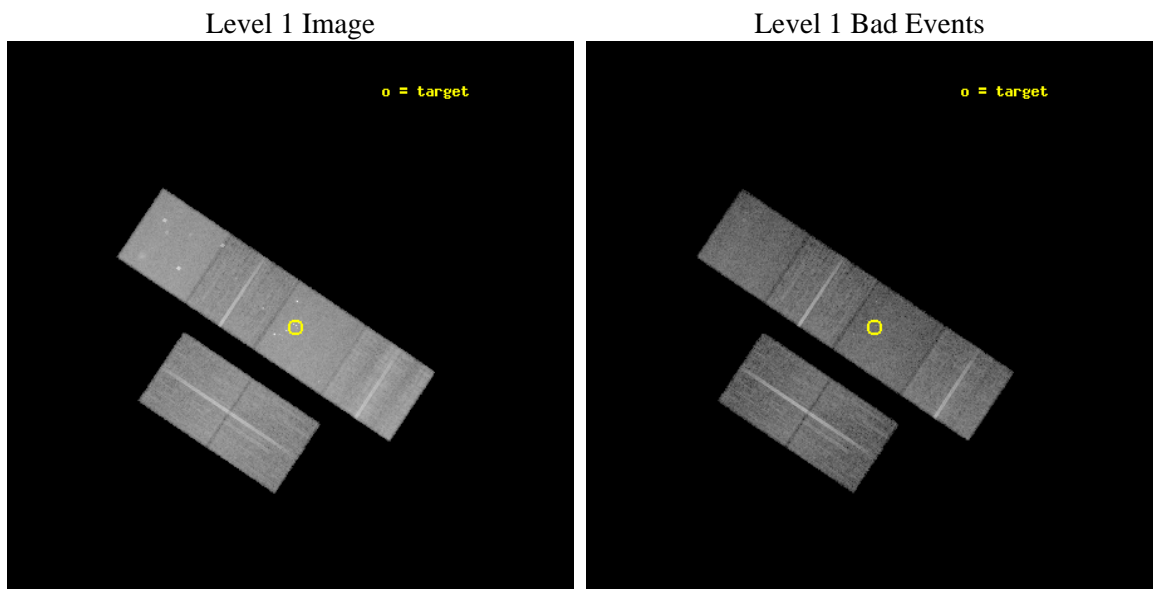
seq_num	600136	Sequence number
obs_id	1579	Observation id
title	SUPER-LUMINOUS X-RAY SOURCES IN NEARBY GALAXIES NGC4485/4490	Propo
observer	Dr. Stephen Murray	Principal investigator
object	NGC 4485/4490	Source name
dtcycle	0	
cycle	P	events from which exps? Prim/Second/Both
ra_targ	187.63	Observer's specified target RA [deg]
dec_targ	41.65	Observer's specified target Dec [deg]
ra_nom	187.64215477456	Nominal RA [deg]
dec_nom	41.65392311869	Nominal Dec [deg]
roll_nom	33.747325516407	Nominal Roll [deg]
revision	3	Processing version of data
ontime	19769.600018397	Sum of GTIs [s]
livetime	19519.26543914	Livetime [s]
ontime2	19769.600018397	Sum of GTIs [s]
ontime3	19769.600018397	Sum of GTIs [s]
ontime5	19769.600018397	Sum of GTIs [s]
ontime6	19766.359058157	Sum of GTIs [s]
ontime7	19769.600018397	Sum of GTIs [s]
ontime8	19769.600018397	Sum of GTIs [s]
l2events	197334	Number of level 2 events



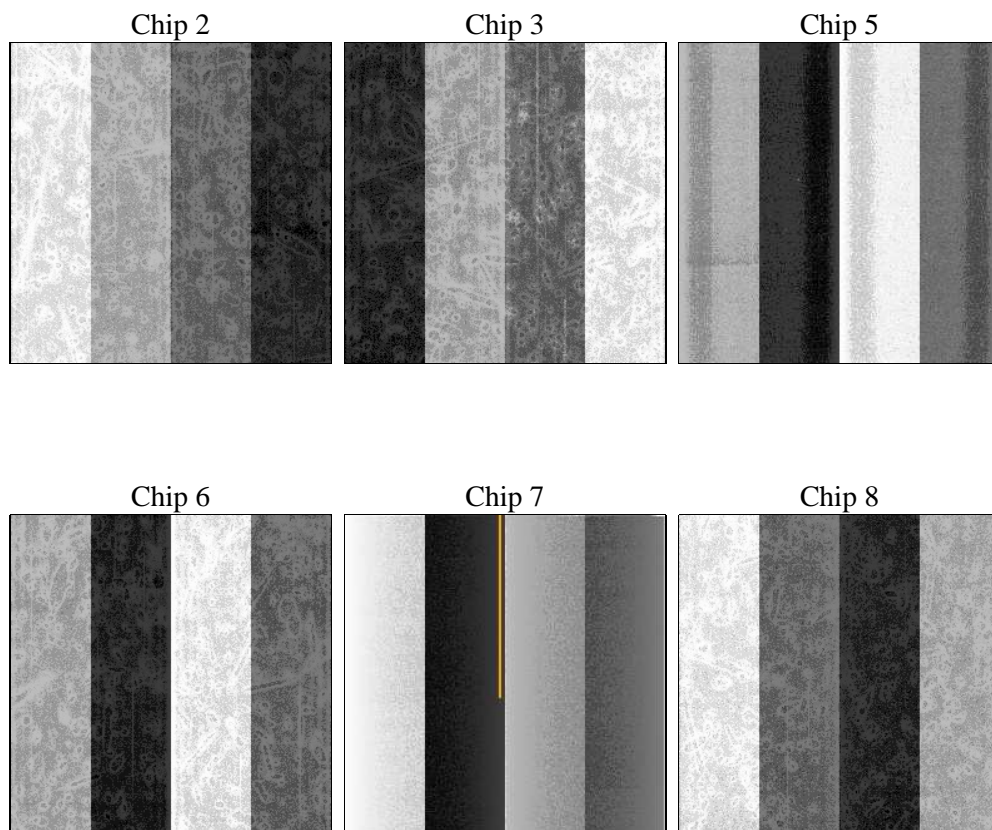
2 OBI

2.1 OBI

2.1.1 Images



2.1.2 Bias



2.1.3 Parameters

obi_num	0	Obi number	sched_exp_time	19816.530000	[s] Scheduled observation exposure time
ascdsver	8.4.5	Processing system revision	ontime	19769.600018397	Sum of GTIs [s]
caldsver	4.5.1.1	 	ontime2	19769.600018397	Sum of GTIs [s]
date	2012-09-03T01:06:07	Date and time of file creation	ontime3	19769.600018397	Sum of GTIs [s]
revision	3	Processing version of data	ontime5	19769.600018397	Sum of GTIs [s]
			ontime6	19766.359058157	Sum of GTIs [s]
			ontime7	19769.600018397	Sum of GTIs [s]
			ontime8	19769.600018397	Sum of GTIs [s]
			l1events	873529	Number of level 1 events

2.1.4 Events

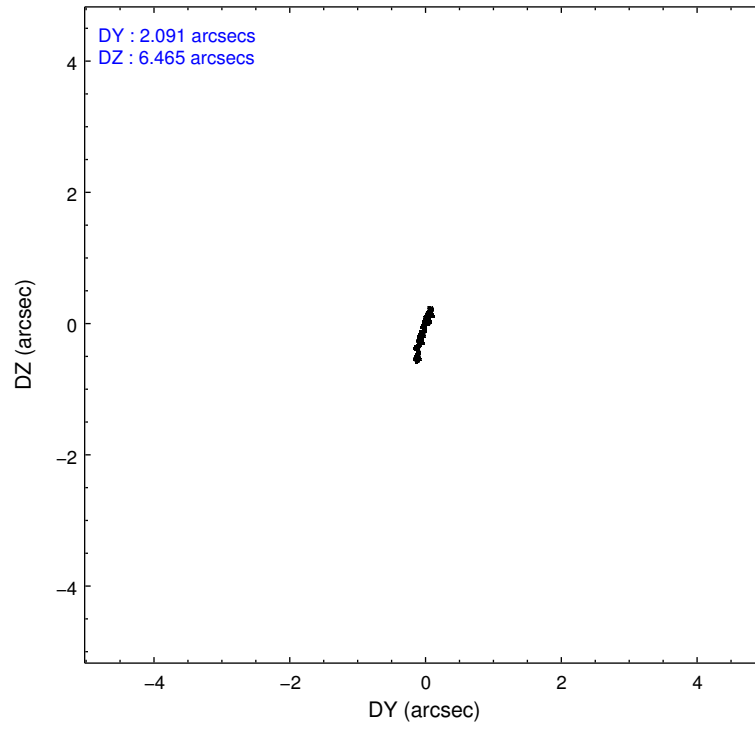
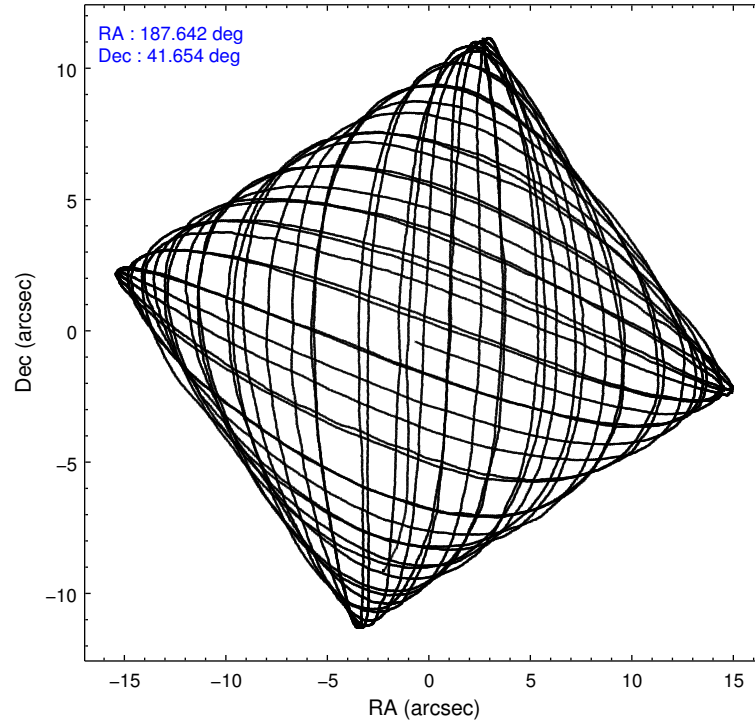
	ccd 2	ccd 3	ccd 5	ccd 6	ccd 7	ccd 8		ccd 2	ccd 3	ccd 5	ccd 6	ccd 7	ccd 8
level 1 events	123084	117723	167346	126667	158932	179777	grade 0 events	6628	5961	10958	6616	8762	18068
rejected events	107830	103528	88153	110970	86536	123064		5%	5%	6%	5%	5%	10%
rejected %	87%	87%	52%	87%	54%	68%	grade 1 events	60	52	315	58	175	148
								0%	0%	0%	0%	0%	0%
							grade 2 events	3292	3031	21645	3432	14909	9659
								2%	2%	12%	2%	9%	5%
							grade 3 events	1237	1208	3969	1328	6987	8548
								1%	1%	2%	1%	4%	4%
							grade 4 events	1393	1257	3761	1359	6871	7777
								1%	1%	2%	1%	4%	4%
							grade 5 events	3798	4331	12799	4875	14425	6376
								3%	3%	7%	3%	9%	3%
							grade 6 events	2712	2741	38890	2970	34886	12670
								2%	2%	23%	2%	21%	7%
							grade 7 events	103964	99142	75009	106029	71917	116531
								84%	84%	44%	83%	45%	64%

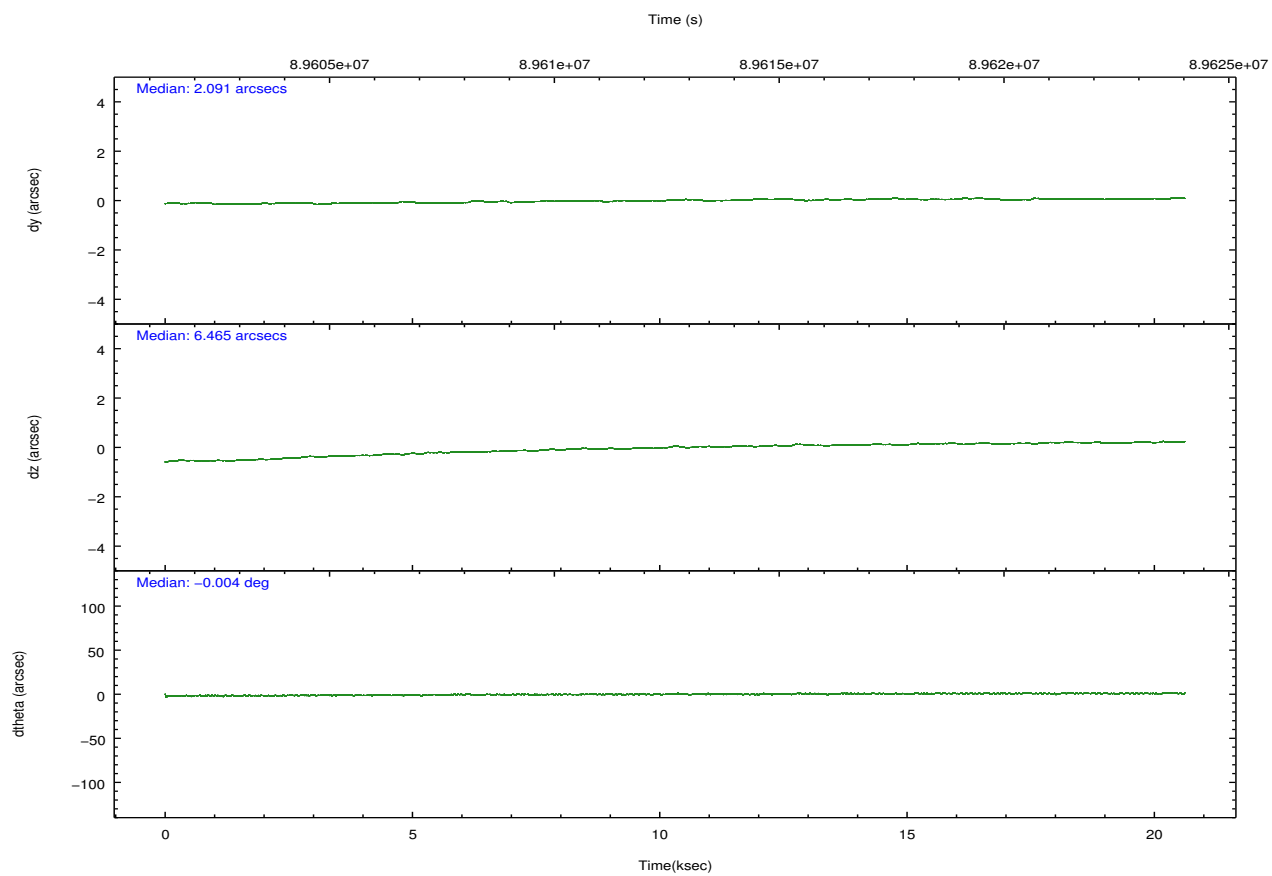
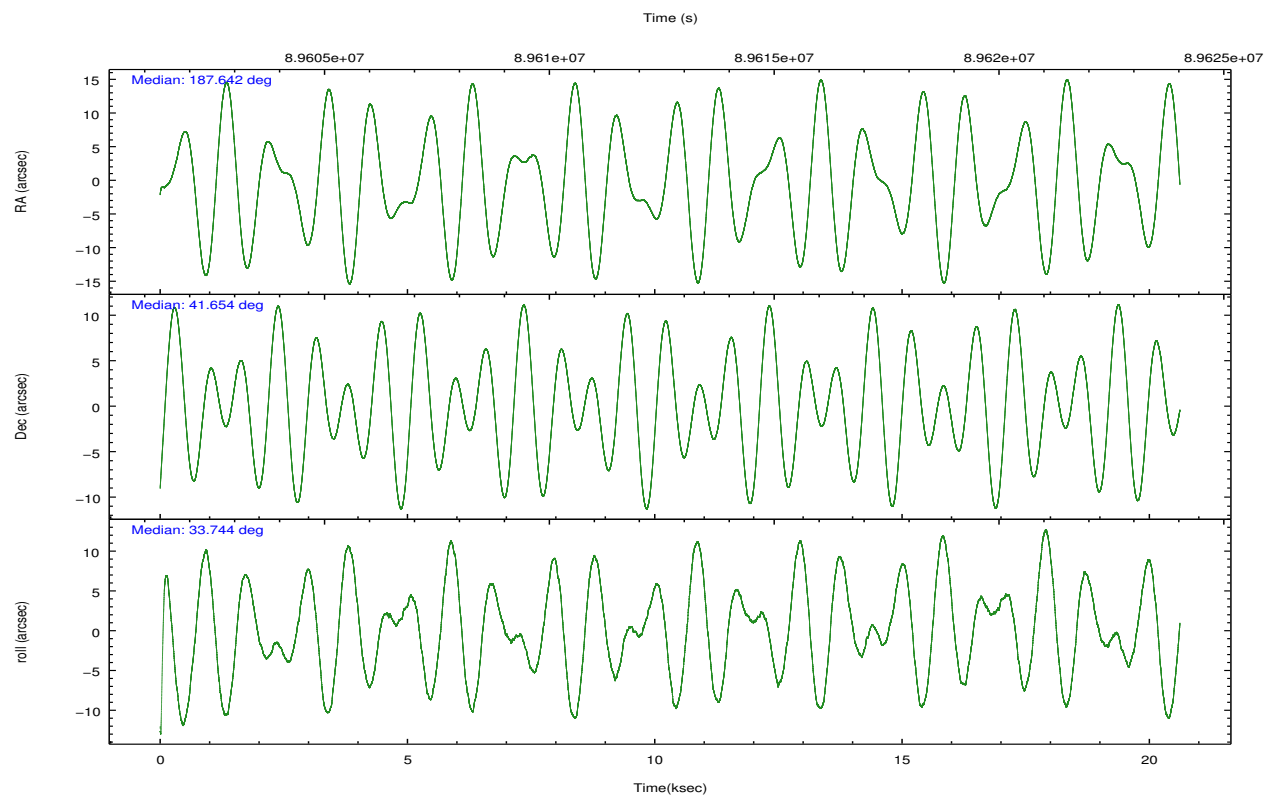
2.2 Compared Parameters

Parameter	Planned	Actual
Instrument	ACIS	ACIS
Detector	ACIS-235678	ACIS-235678
Grating	NONE	NONE
Data mode	FAINT	FAINT
Observation mode	POINTING	POINTING
[deg] Pointing RA	187.626184	187.6421547745646
[deg] Pointing Dec	41.629302	41.65392311868975
[deg] Pointing Roll	33.601328	33.74732551640663
[mm] SIM focus pos	-0.684267	-0.6828225247311905
[mm] SIM defocus	0	0.001444936568705701
[mm] SIM translation stage pos	-190.132523	-190.1400660498719
[mm] SIM translation stage offset	0	0.00754346686406393
[s] Observation start time (MET)	89603178.184000	89601908.406958
Observation start date	2000-11-03T01:45:14	2000-11-03T01:25:08
[s] Observation end time (MET)	89622995.184000	89623588.182777
Observation end date	2000-11-03T07:15:31	2000-11-03T07:26:28
Read mode	TIMED	TIMED

Parameter	Planned	Actual
Obspar format version number	7	7
Obspar file type	PREDICTED	ACTUAL
Obspar update status	NONE	UPDATED
Number of optional ACIS chips dropped	0	0
On-chip summing requested	N	N
Subarray requested	NONE	NONE
Alternating exposures requested	N	N
[s] Primary exposure time	0.000000	3.2

2.3 Aspect



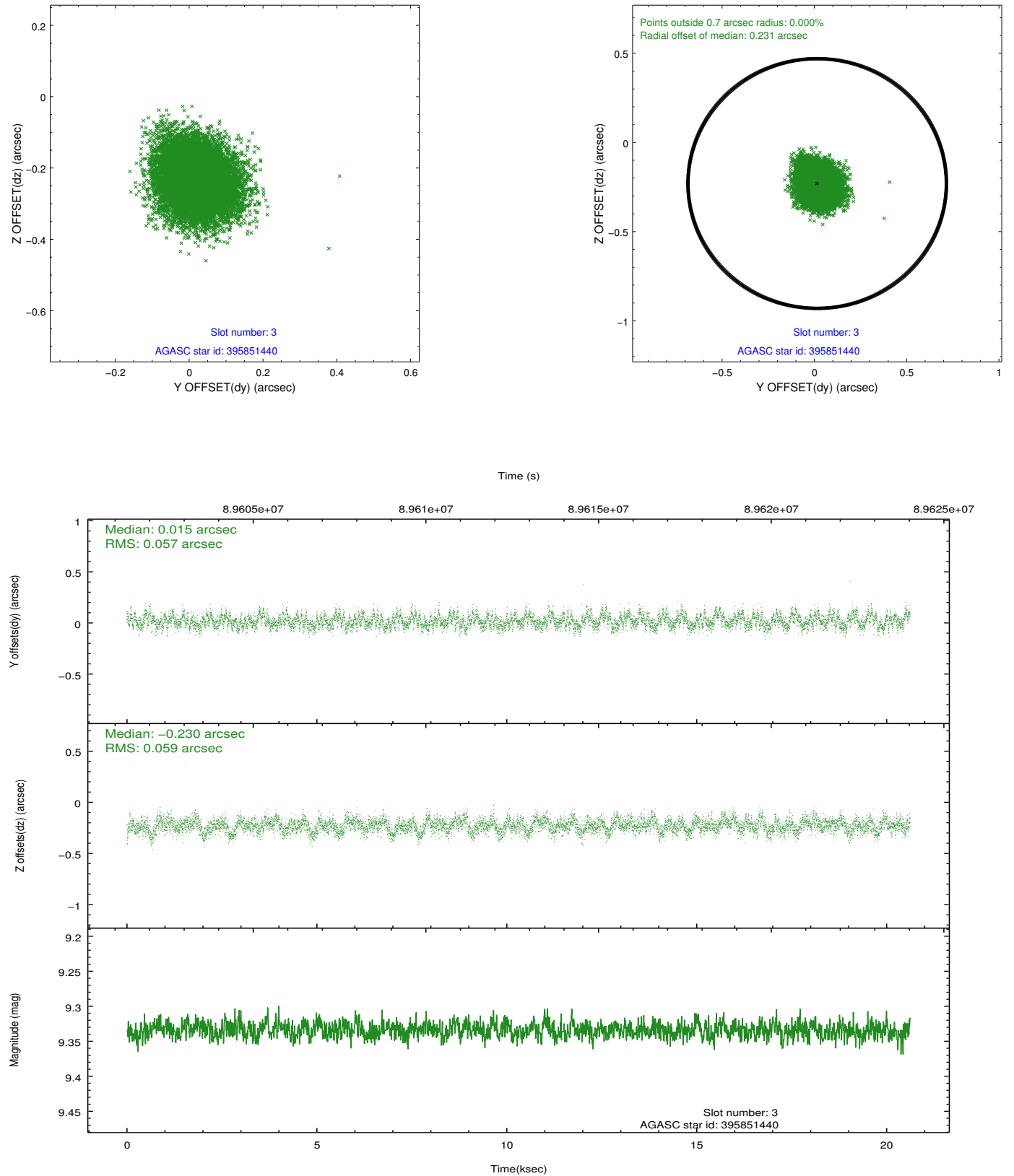


Slot Statistics

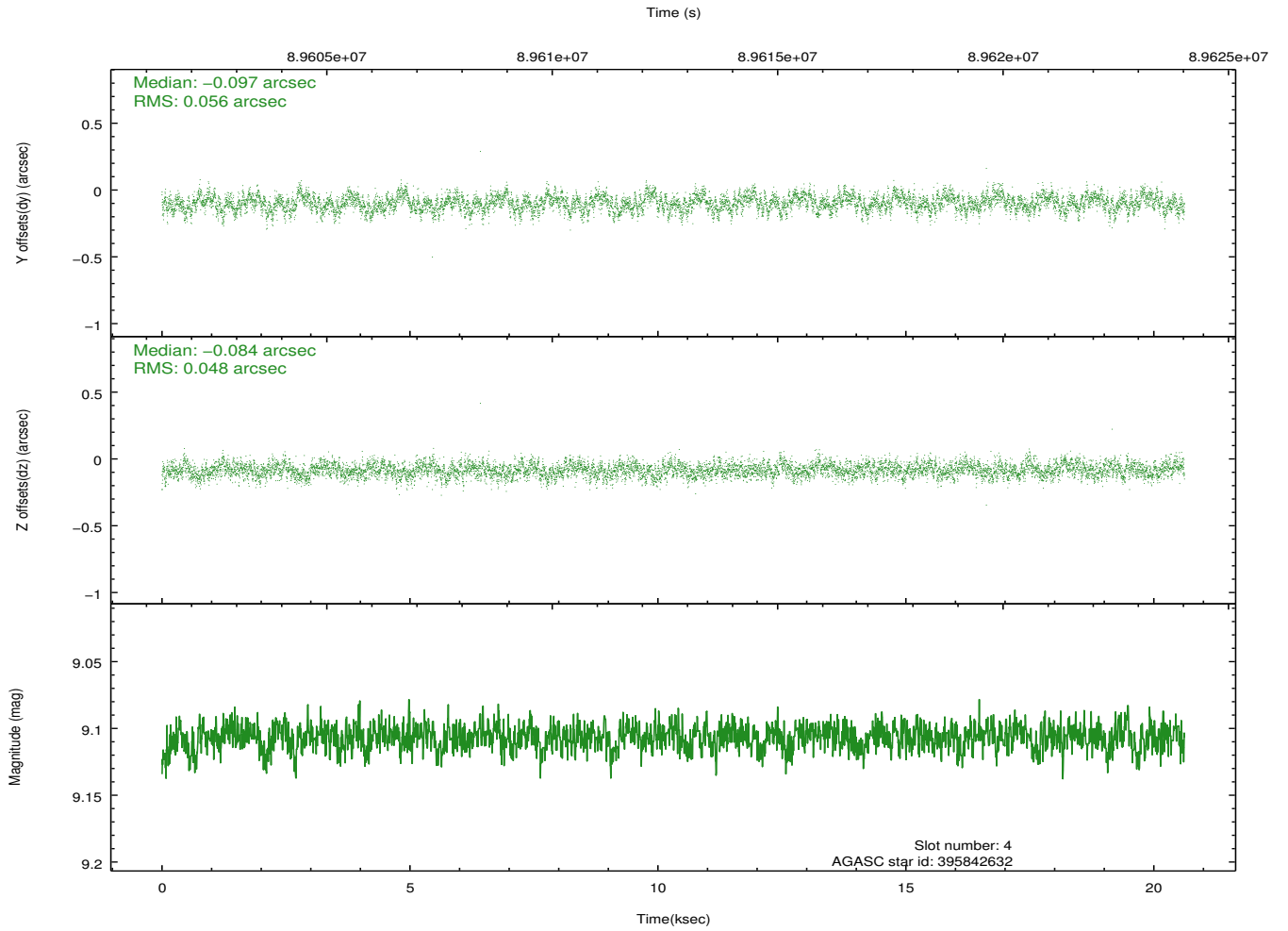
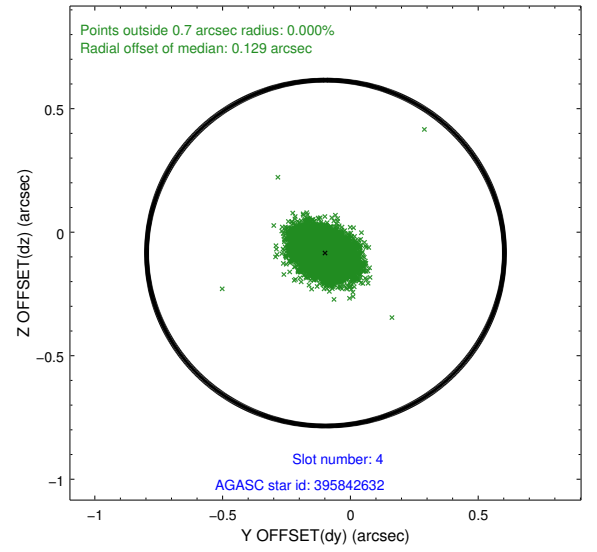
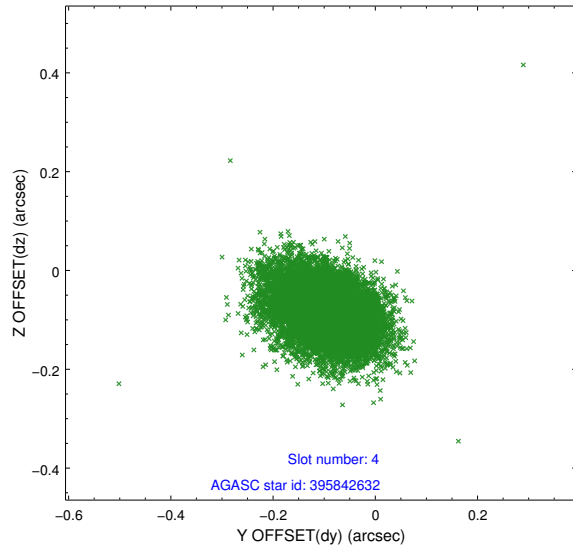
slot	status	id	mag	n_pts	med_dy	med_dz	dr1	dr2	ra	dec	mean_y	mean_z
0	FID	ACIS-S-2	7.11	5029	-0.036	0.001	0.008	0.013	0.000000	0.000000	-754.71	-1727.55
1	FID	ACIS-S-4	7.20	5029	-0.021	0.017	0.007	0.012	0.000000	0.000000	2158.48	180.79
2	FID	ACIS-S-5	7.23	5029	0.026	-0.009	0.007	0.012	0.000000	0.000000	-1807.28	174.60
3	GUIDE	395851440	9.33	10059	0.015	-0.230	0.088	0.140	187.131494	42.071574	-216.44	2060.48
4	GUIDE	395842632	9.11	10057	-0.097	-0.084	0.078	0.128	187.414657	41.992279	253.46	1402.14
5	GUIDE	395846904	9.51	10050	-0.115	0.140	0.116	0.185	188.630312	41.670367	2341.06	-1357.87
6	GUIDE	395578096	8.45	10055	0.014	0.240	0.088	0.146	187.586419	40.830440	-1679.92	-2335.62
7	GUIDE	395848336	9.92	10049	0.186	-0.066	0.119	0.210	187.027211	41.445090	-1708.71	346.28

2.4 Star Slots

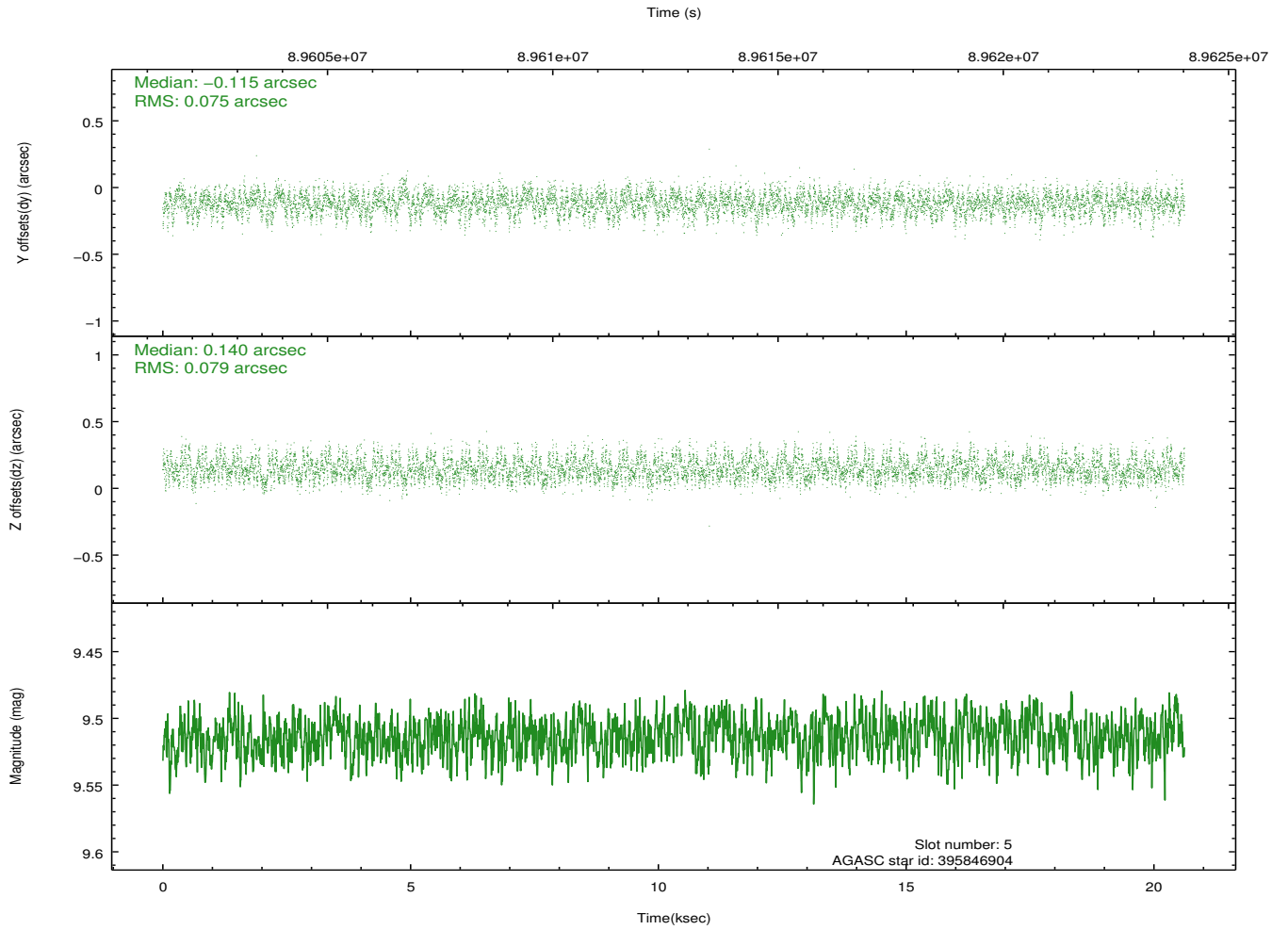
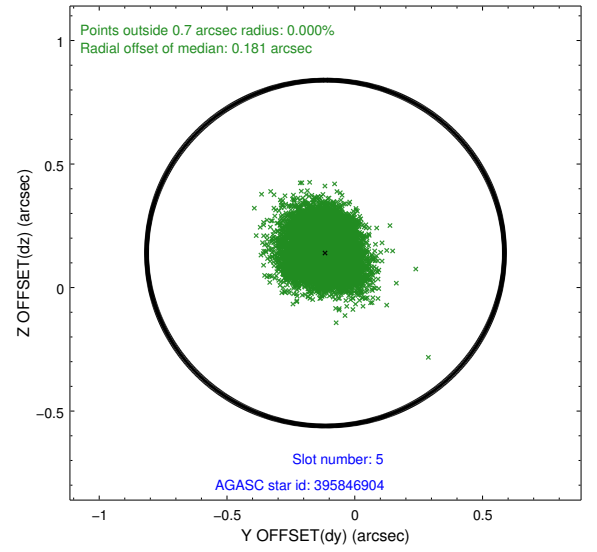
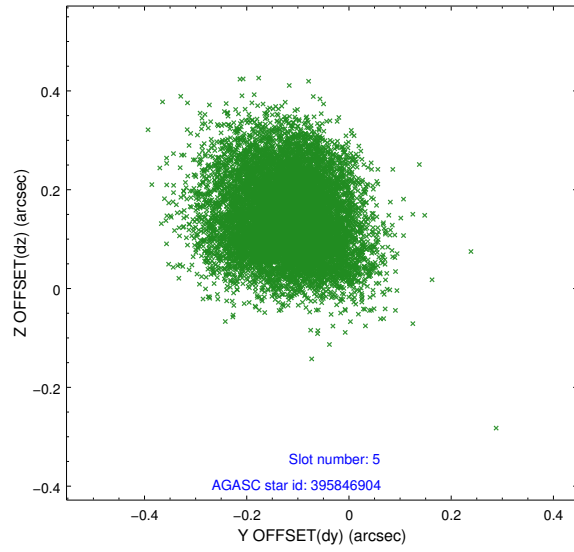
2.4.1 Slot 3



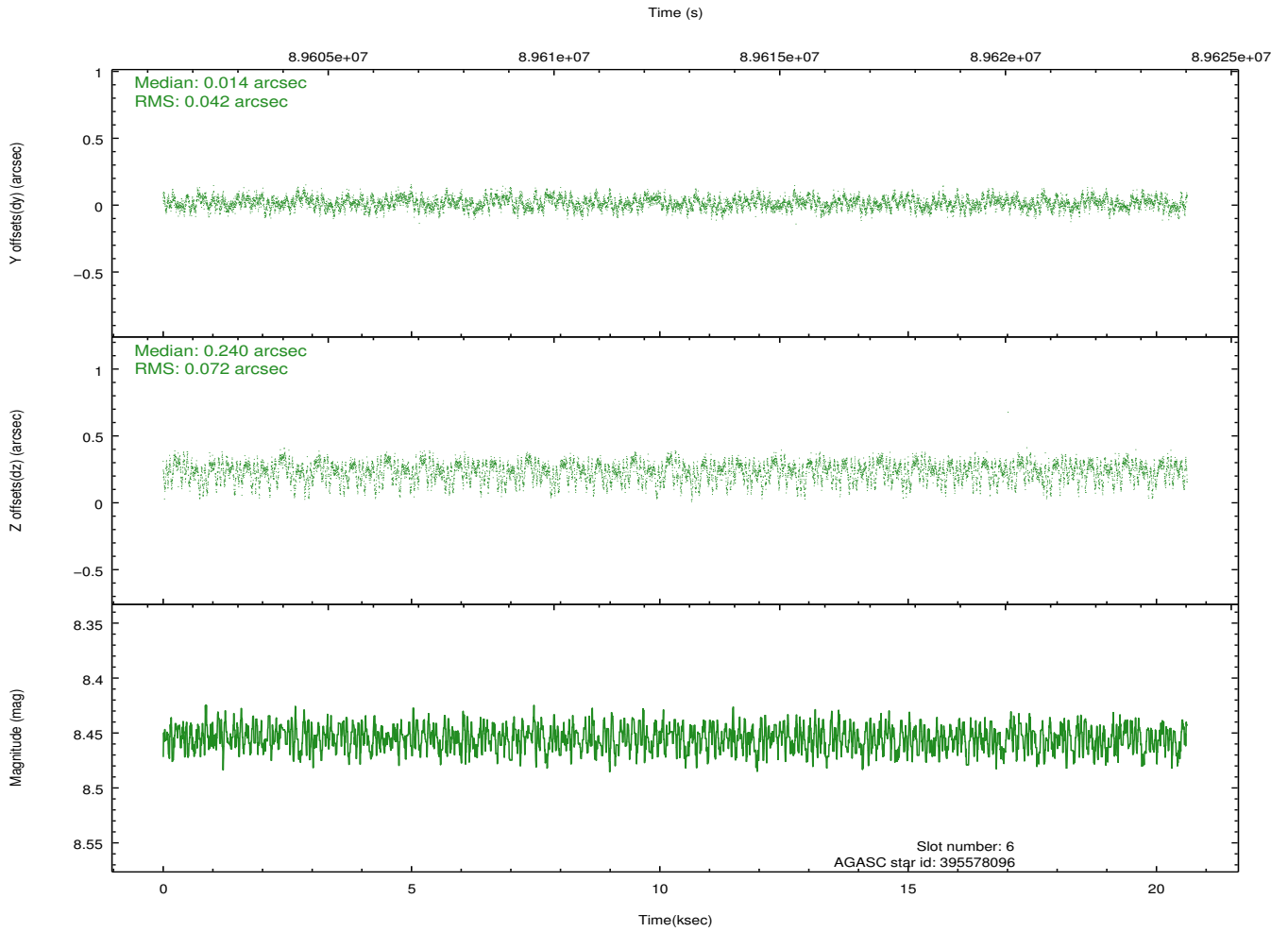
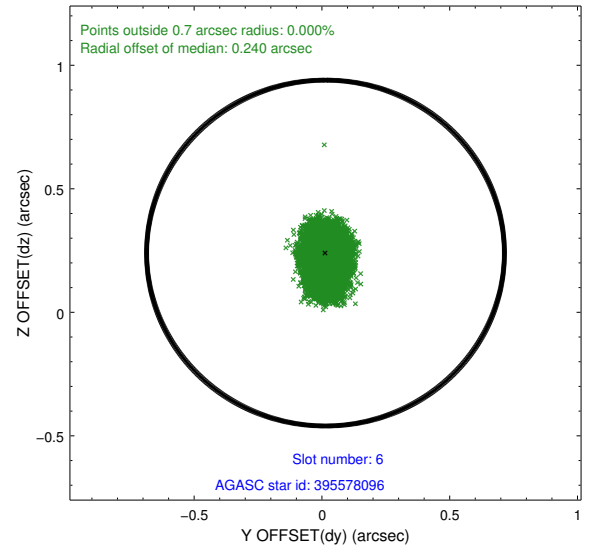
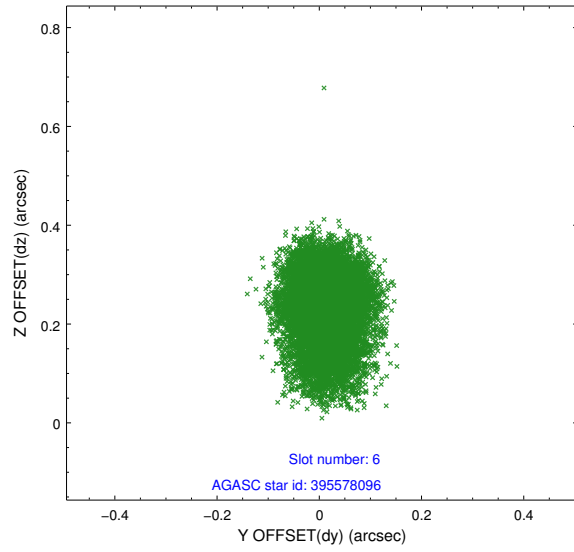
2.4.2 Slot 4



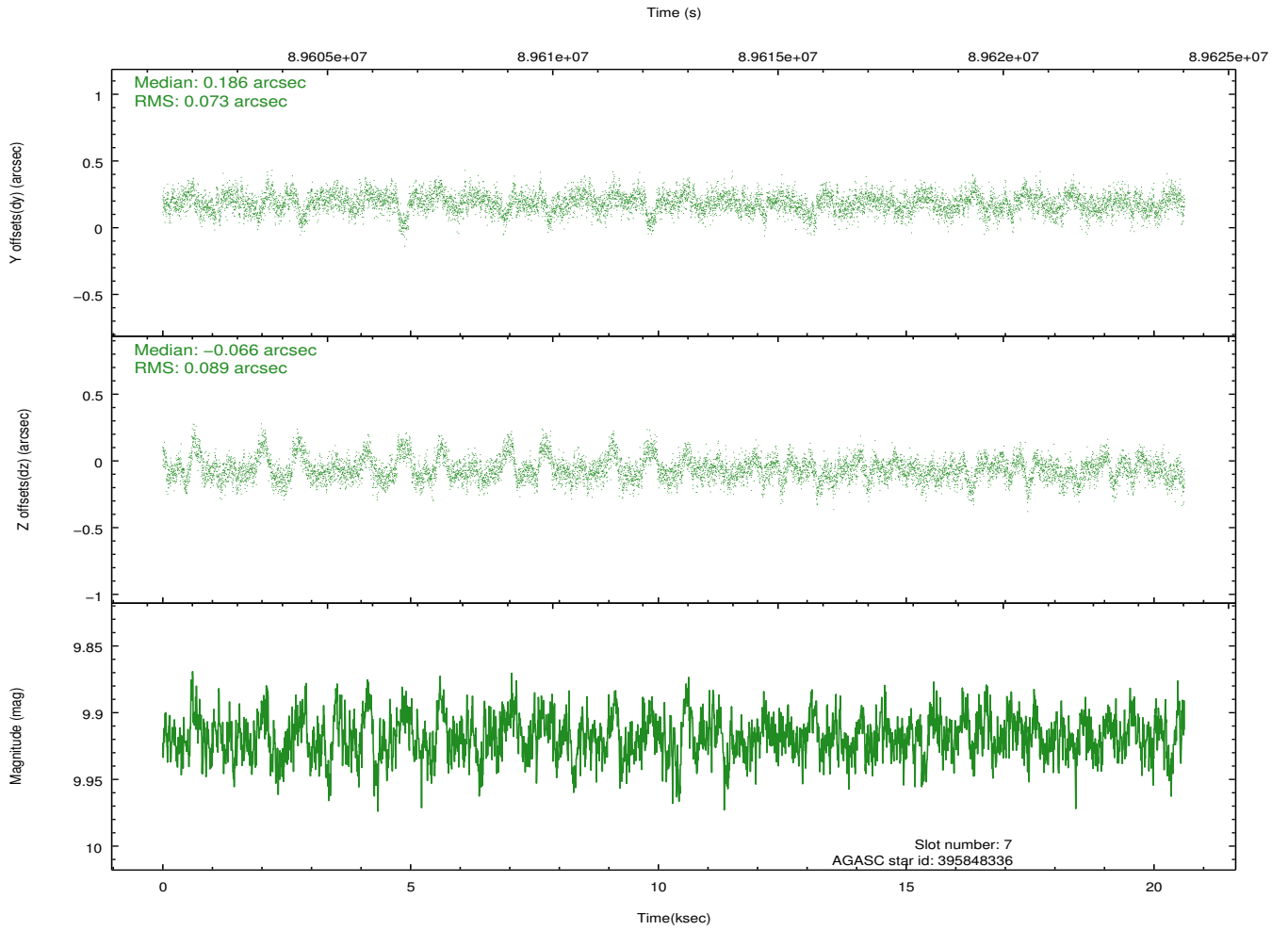
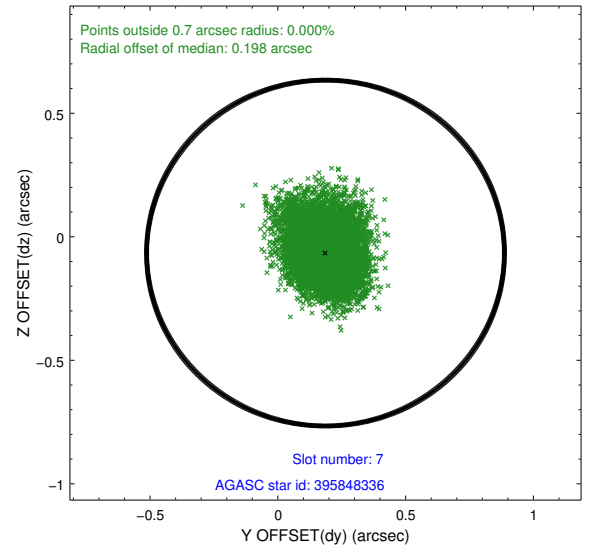
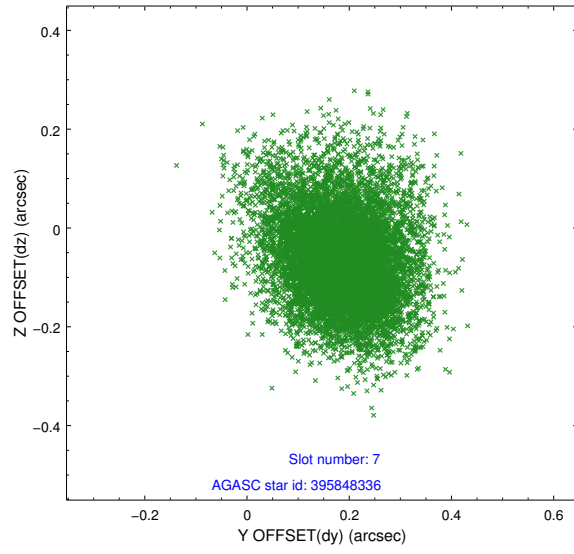
2.4.3 Slot 5



2.4.4 Slot 6

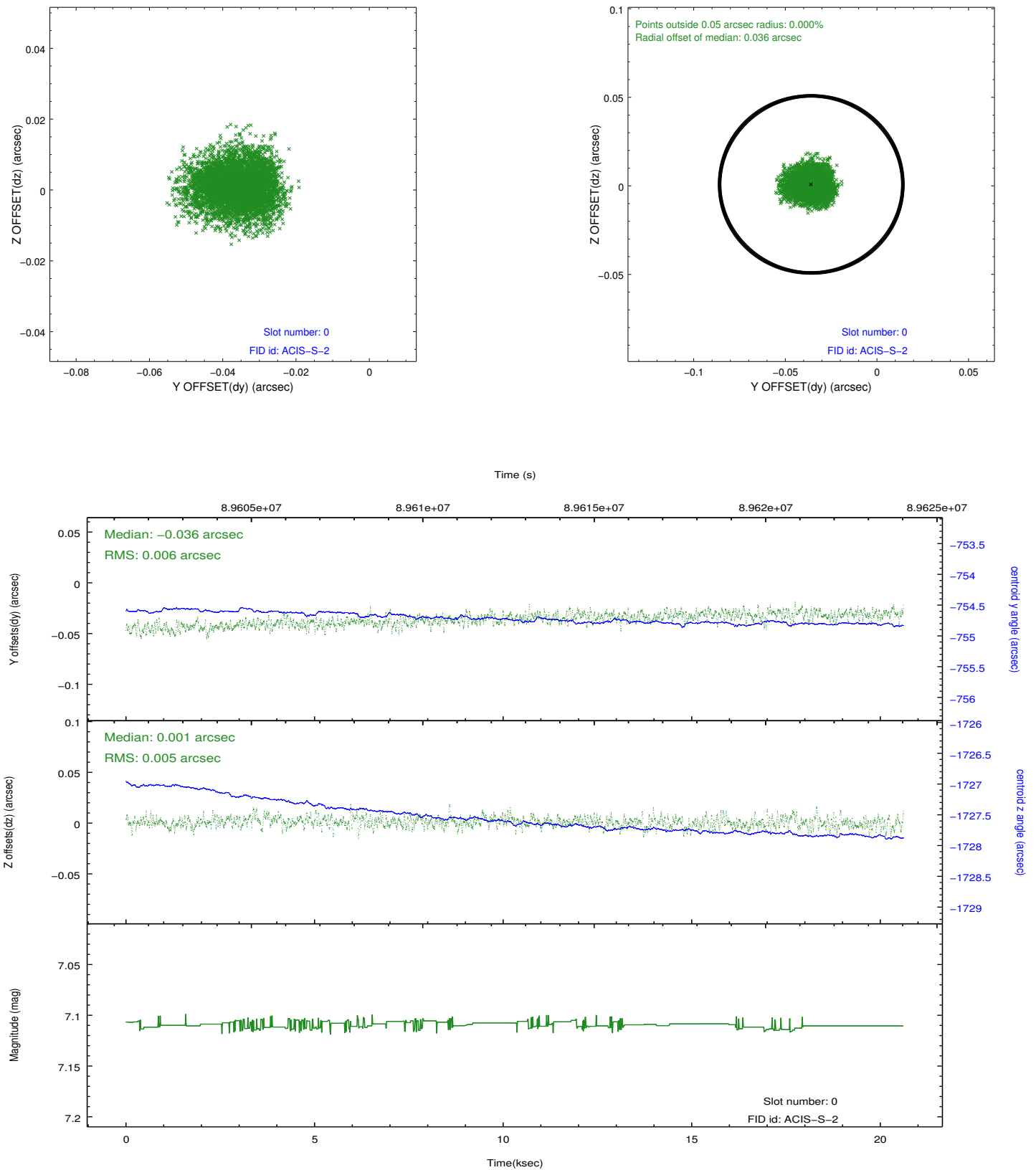


2.4.5 Slot 7

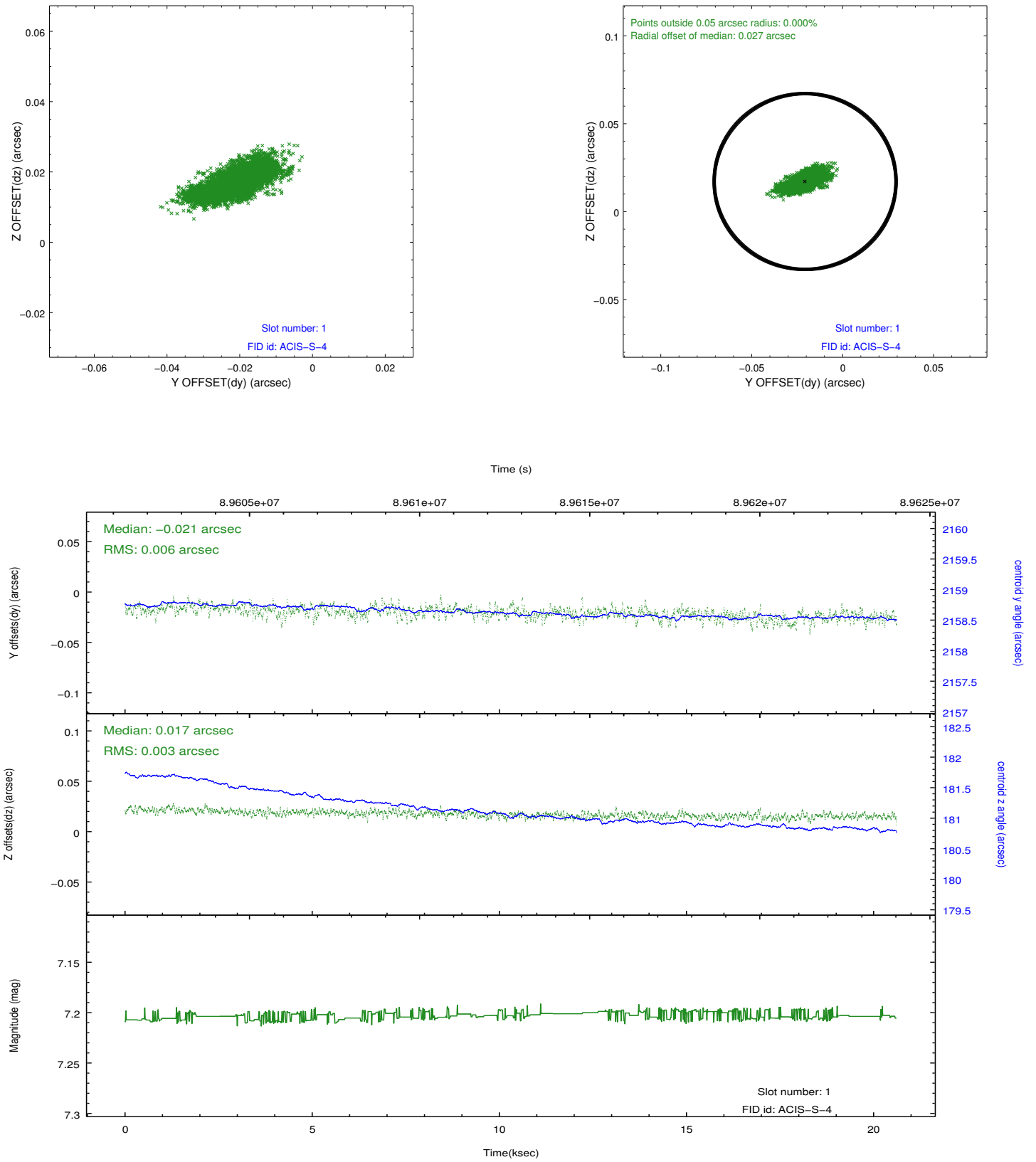


2.5 FID Slots

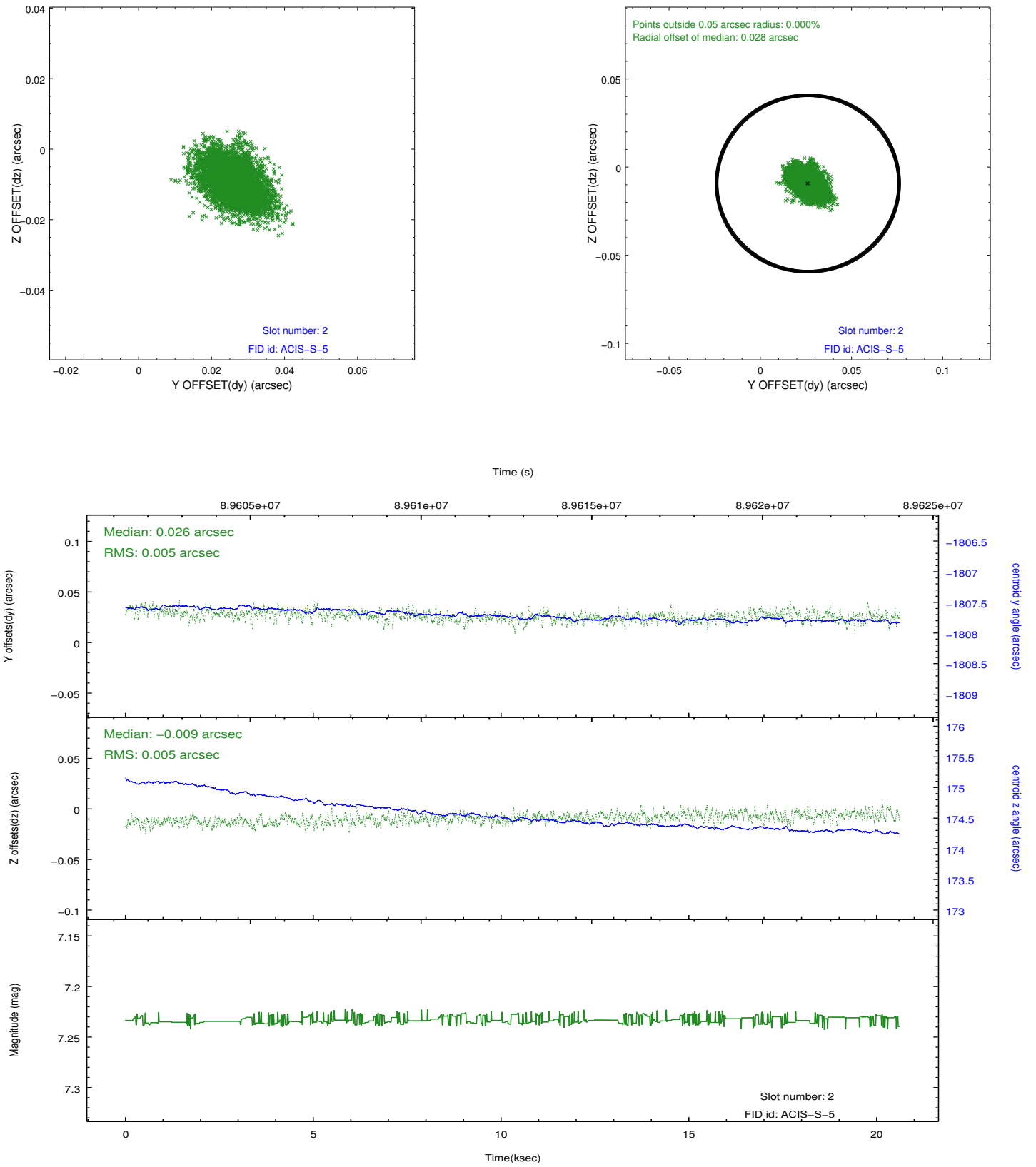
2.5.1 Slot 0



2.5.2 Slot 1



2.5.3 Slot 2



A Summary

A.1 Status

V&V Scientist	Jen Lauer
V&V Date (YYYY-MM-DD)	2012.09.10
V&V Edition	1
V&V Disposition and Status	OK
V&V Charge Time	19.772

A.2 Comments