

V&V Reference Report

L2 ASCDS Version : 7.6.10

Observation 3399 - L2 Version 001
Chandra X-Ray Center

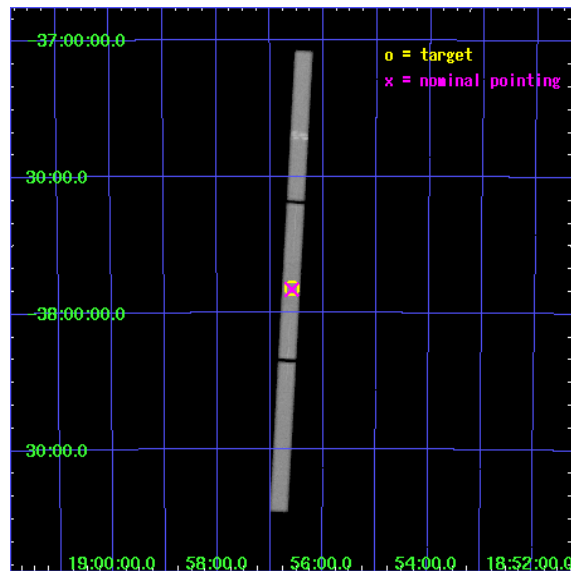
L2 Processing Date : Jan 10 2007

Contents

1	Front	2
2	OBI	3
2.1	OBI	3
2.1.1	Images	3
2.1.2	Parameters	4
2.1.3	Events	4
2.2	Compared Parameters	5
2.3	Aspect	6
2.4	Star Slots	9
2.4.1	Slot 3	9
2.4.2	Slot 4	10
2.4.3	Slot 5	11
2.4.4	Slot 6	12
2.4.5	Slot 7	13
2.5	FID Slots	14
2.5.1	Slot 0	14
2.5.2	Slot 1	15
2.5.3	Slot 2	16
3	Gratings	17
3.1	LETG Arm	17
A	Summary	19
A.1	Status	19
A.2	Comments	19

1 Front

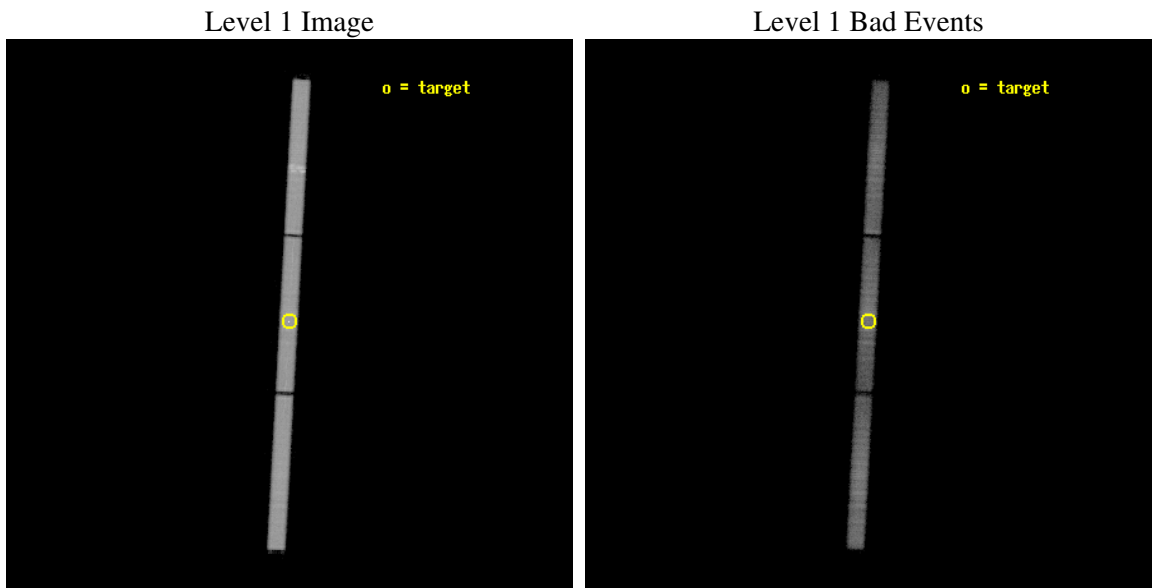
seq_num	500285
obs_id	3399
title	ARCHIVAL RESEARCH FOR ISOLATED NEUTRON STAR RXJ185635-3754
observer	DR. HARVEY TANANBAUM
object	RXJ1856.5-3754
ra_targ	284.147083
dec_targ	-37.909556
ra_nom	284.14727936829
dec_nom	-37.914380081303
roll_nom	273.07492392462
revision	2
ontime	9320.5816198289
livetime	9258.5910753878
l2events	428301



2 OBI

2.1 OBI

2.1.1 Images



2.1.2 Parameters

obi_num	0
ascdsver	7.6.10
caldbver	3.3.0
date	2007-01-10T12:28:13
revision	2

sched_exp_time	9339.000000
ontime	9320.5816198289
l1events	629707

2.1.3 Events

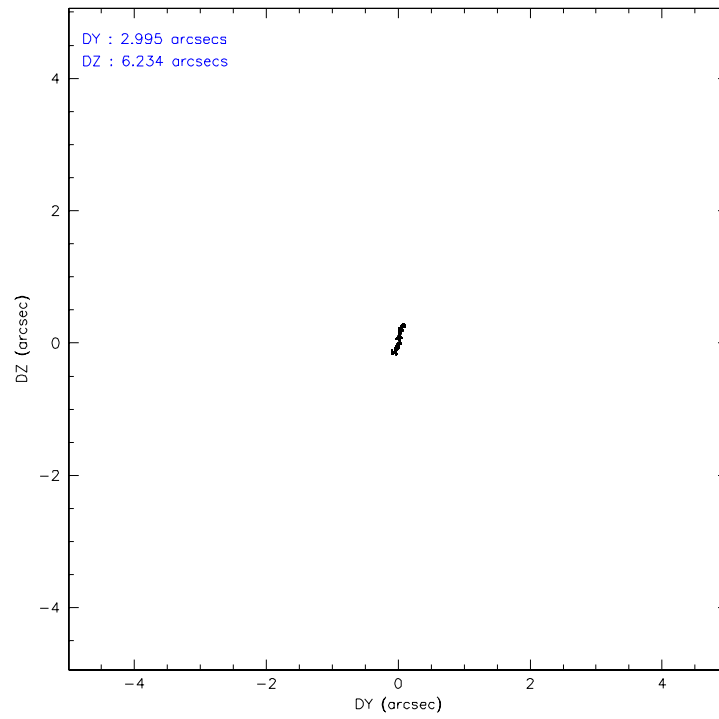
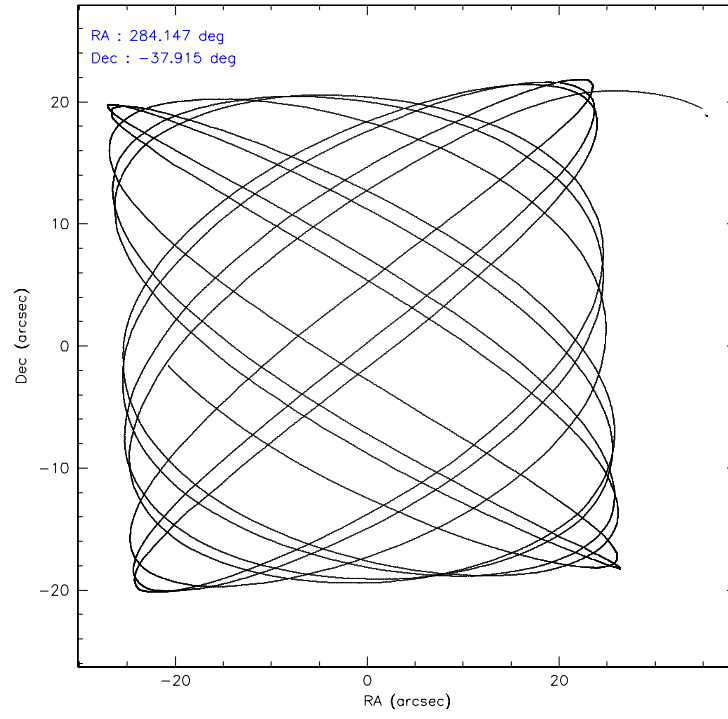
Level 1 Events

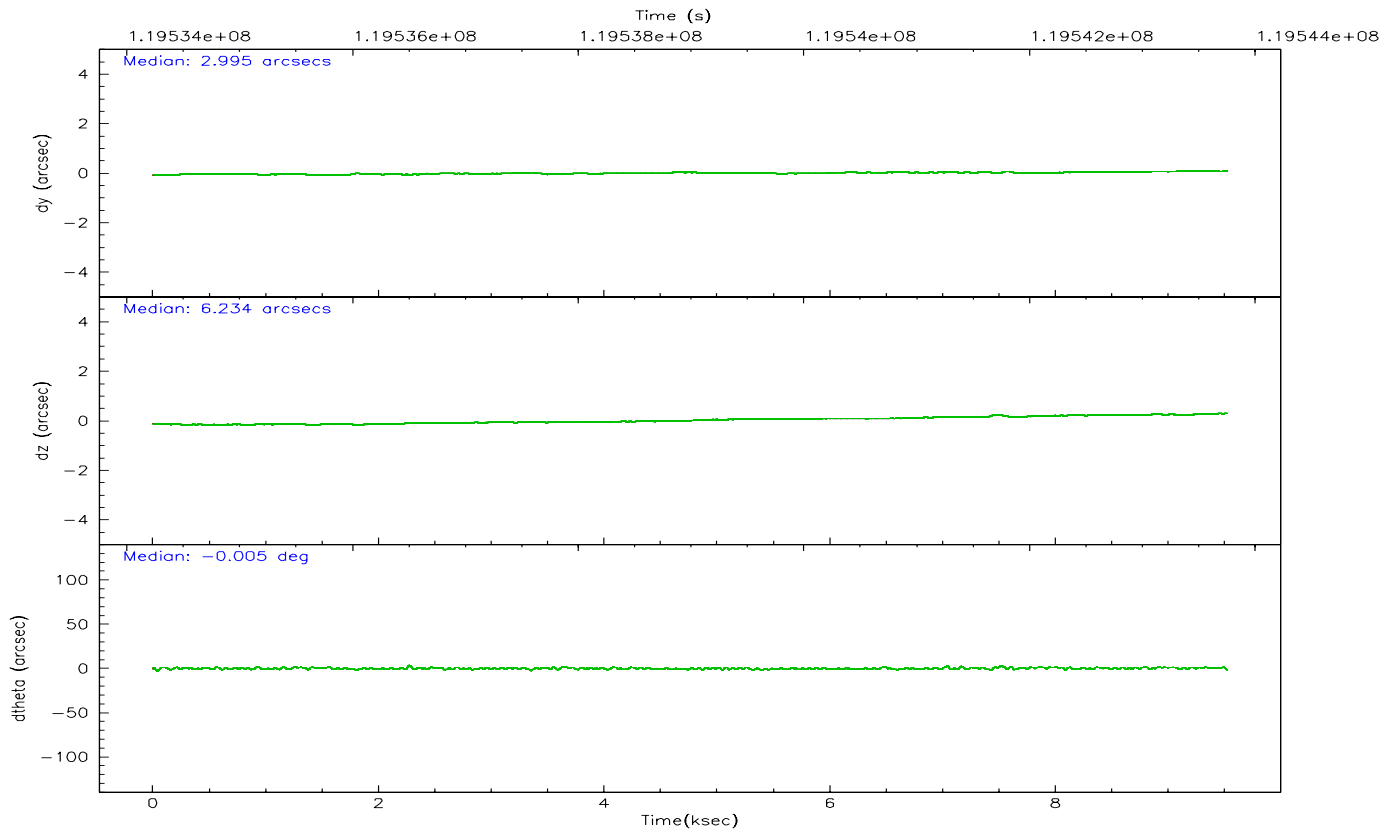
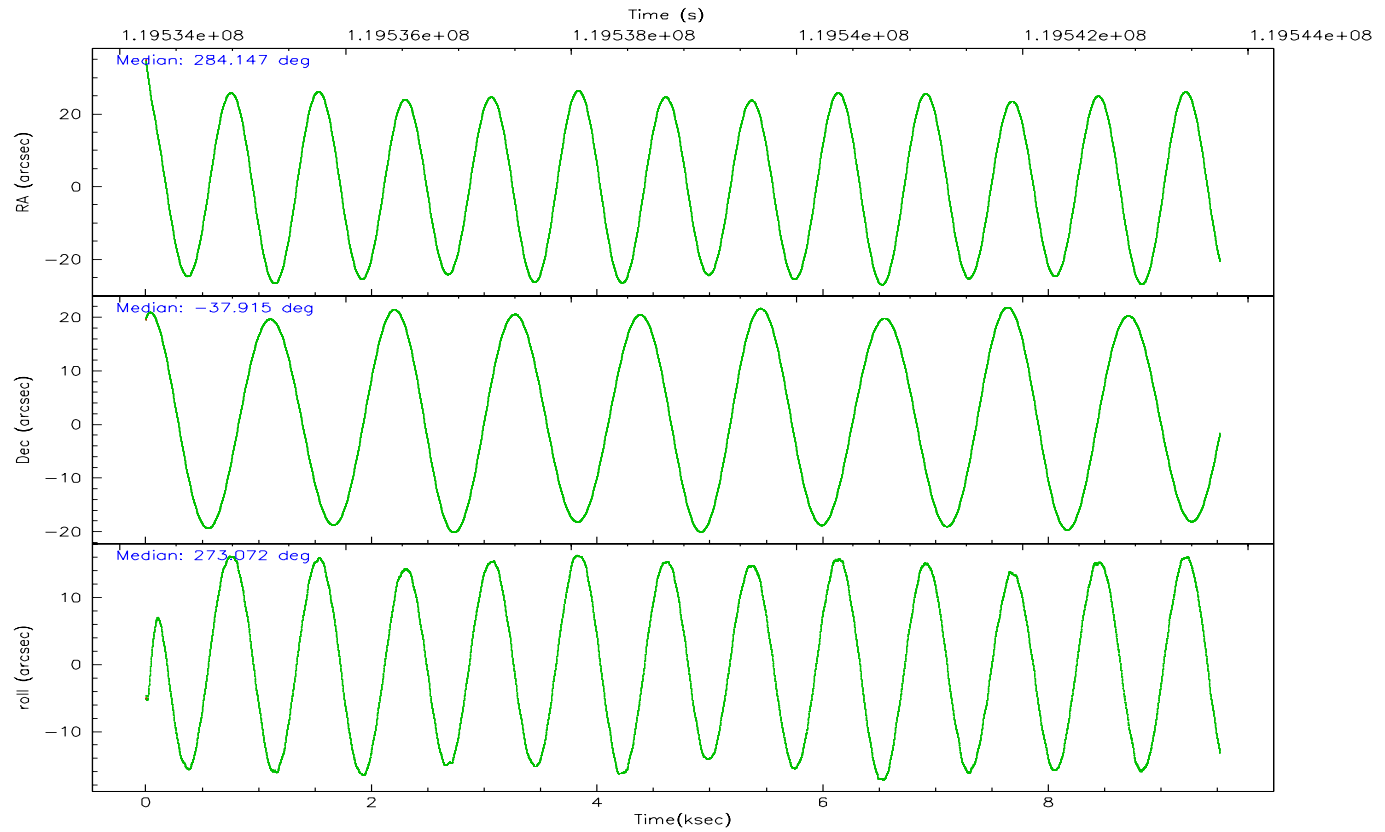
	segment 1	segment 2	segment 3
level 1 events	221379	202368	205960
rejected events	45094	47804	54616
rejected %	20%	23%	26%

2.2 Compared Parameters

Parameter	Planned	Actual	Parameter	Planned	Actual
Instrument	HRC	HRC	Obspar format version number	6	6
Detector	HRC-S	HRC-S	Obspar file type	PREDICTED	ACTUAL
Grating	LETG	LETG	Obspar update status	NONE	UPDATED
Data mode	OBSERVING	OBSERVING			
Observation mode	POINTING	POINTING			
Pointing RA	284.125970	284.1472793682941			
Pointing Dec	-37.891068	-37.91438008130285			
Pointing Roll	272.994524	273.0749239246218			
SIM focus pos (mm)	-1.429586	-1.428180813131781			
SIM defocus (mm)	0.1037507710433287	0.1051558262725154			
SIM translation stage pos (mm)	250.455976	250.466033080201			
SIM translation stage offset (mm)	0	-0.01005468664627074			
Observation start time	119534416.184000	119533626.44438			
Observation start date	2001-10-15T11:59:12	2001-10-15T11:47:06			
Observation end time	119543755.184000	119544179.3323			
Observation end date	2001-10-15T14:34:51	2001-10-15T14:42:59			

2.3 Aspect



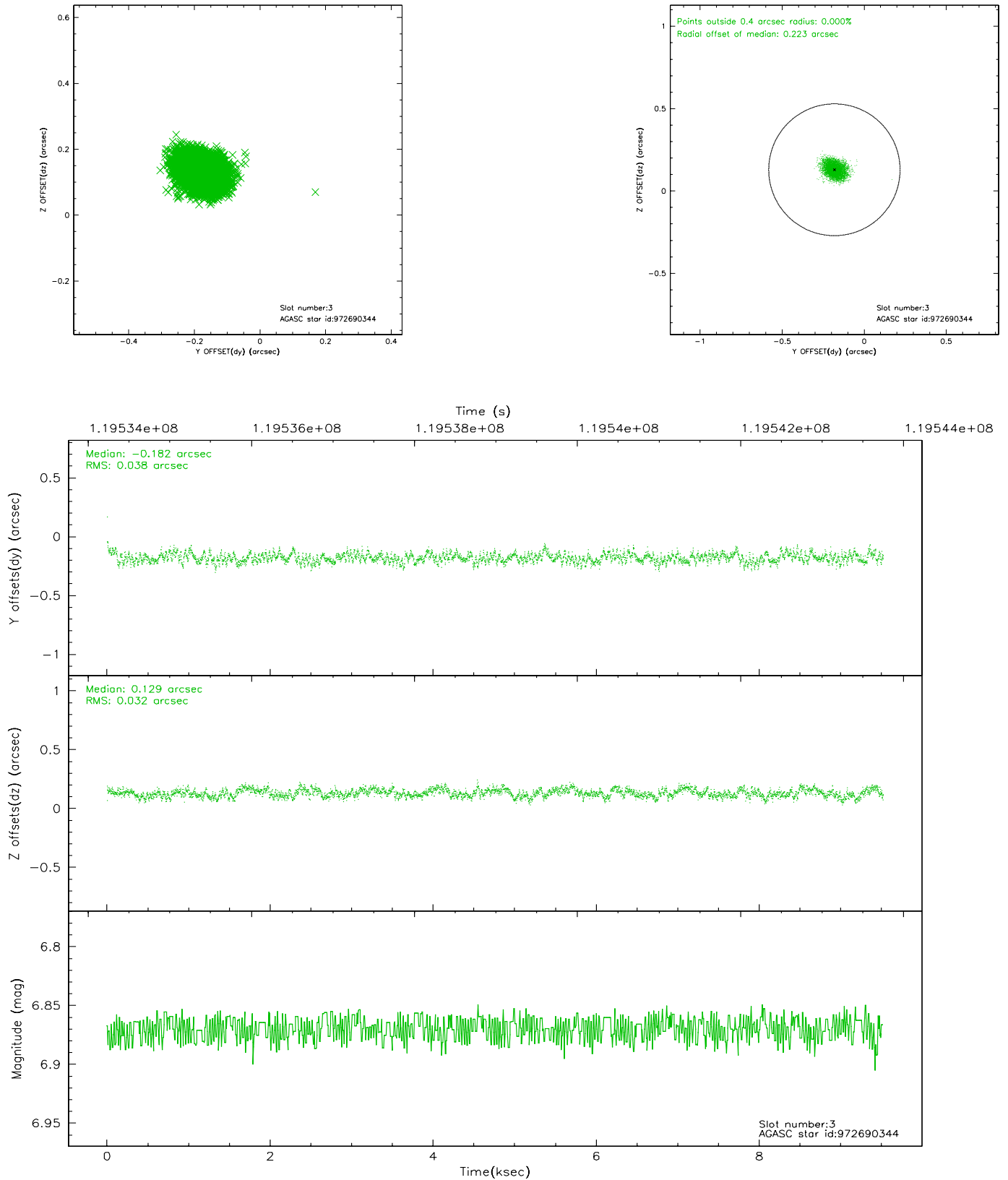


Slot Statistics

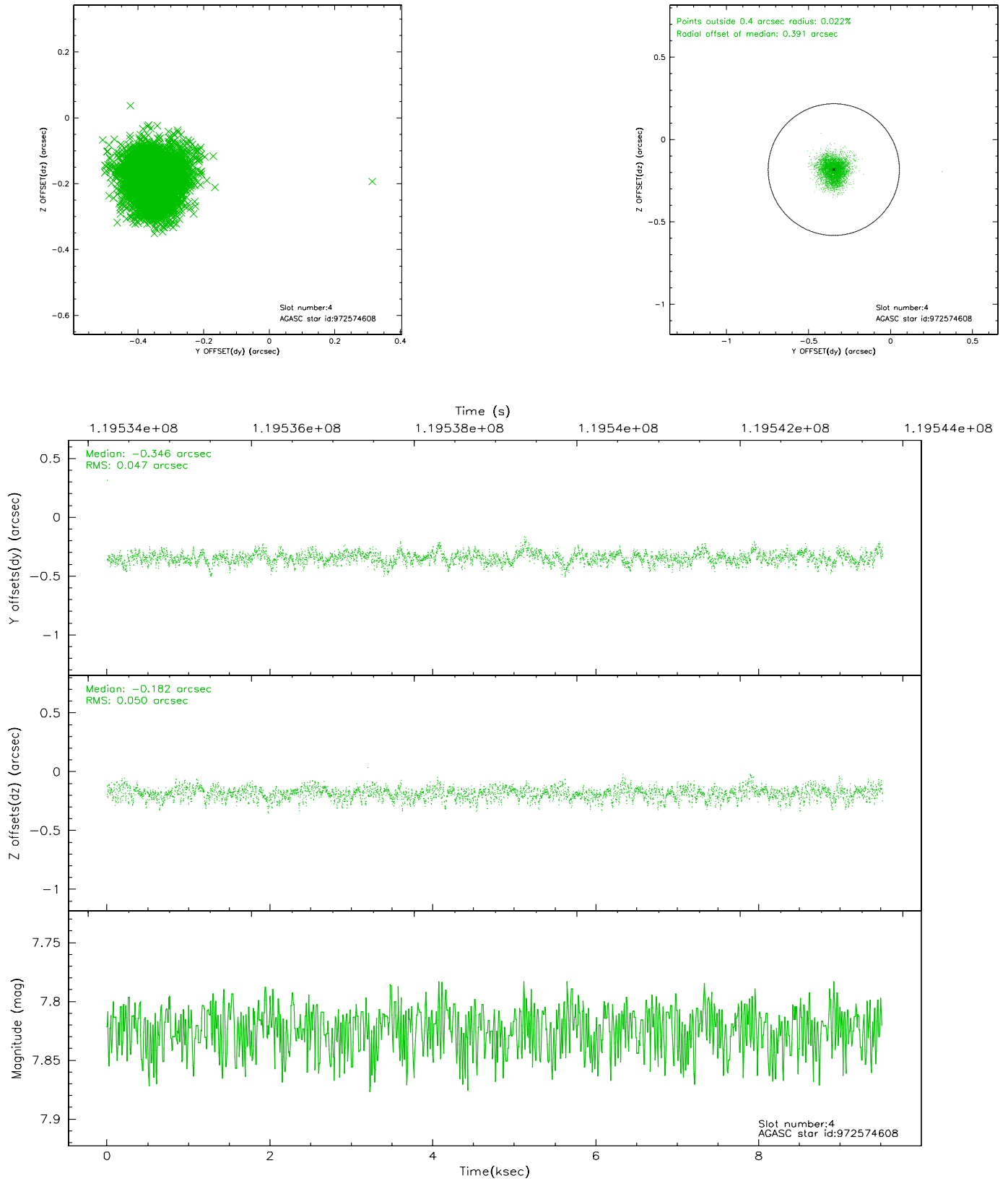
slot	status	id	mag	n_pts	med_dy	med_dz	dr1	dr2	ra	dec	mean_y	mean_z
0	FID	HRC-S-1	6.98	2321	0.133	-0.112	0.005	0.011	0.000000	0.000000	-1157.03	-454.80
1	FID	HRC-S-2	6.99	2323	0.112	-0.158	0.009	0.016	0.000000	0.000000	1242.13	-447.63
2	FID	HRC-S-4	6.93	2323	0.158	-0.034	0.008	0.015	0.000000	0.000000	1241.77	577.22
3	GUIDE	972690344	6.87	4645	-0.182	0.129	0.053	0.085	284.562162	-37.316991	-1997.41	1354.71
4	GUIDE	972574608	7.82	4644	-0.346	-0.182	0.072	0.119	283.352847	-37.274388	-2325.78	-2096.61
5	GUIDE	1037568192	8.68	4645	0.049	0.114	0.061	0.103	284.446060	-38.037443	573.25	878.17
6	GUIDE	1037581728	8.66	4645	0.342	0.046	0.097	0.152	283.813802	-38.579091	2428.17	-1006.77
7	GUIDE	1037576824	8.72	4644	0.137	-0.096	0.058	0.095	284.177029	-38.323536	1561.54	62.18

2.4 Star Slots

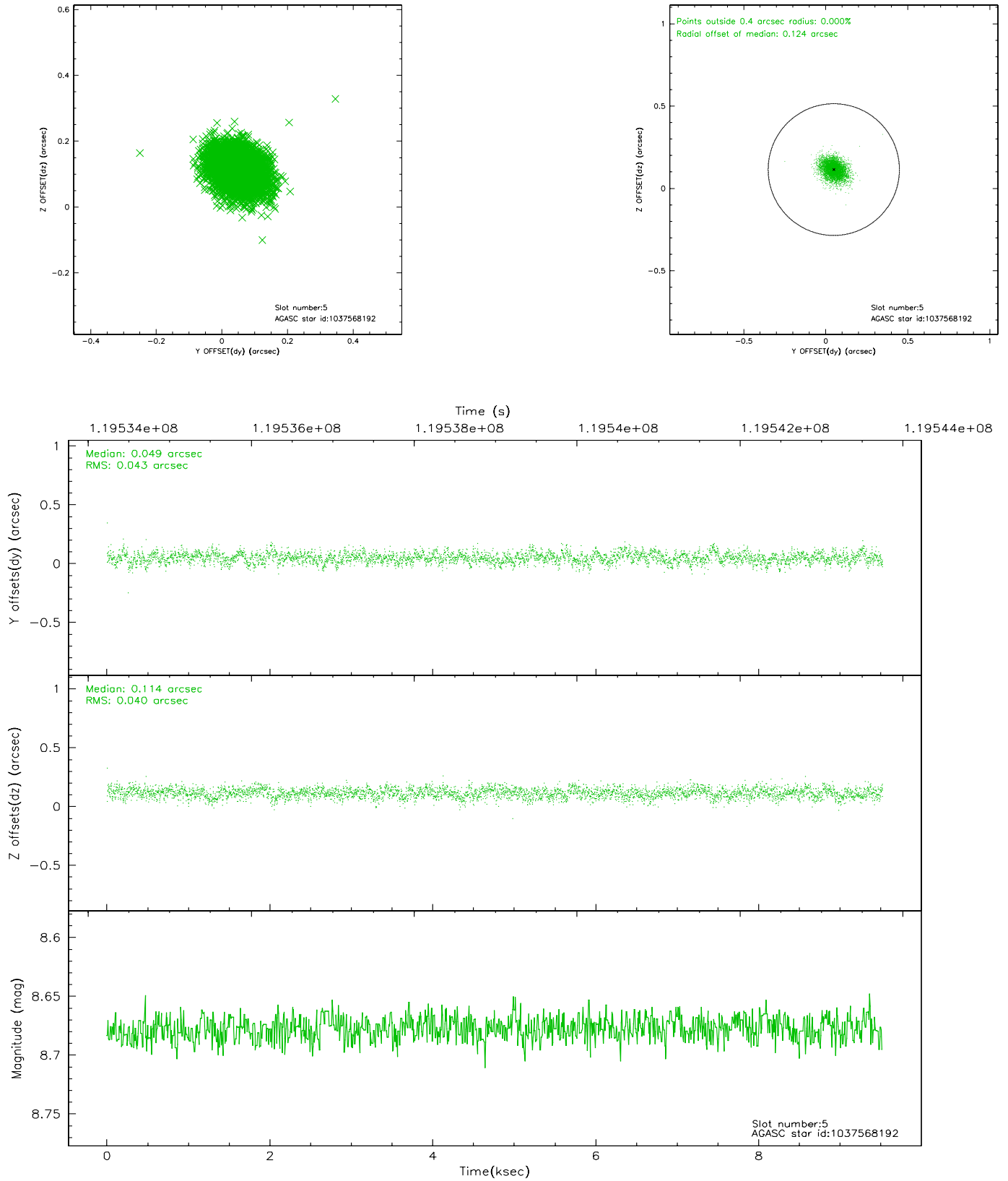
2.4.1 Slot 3



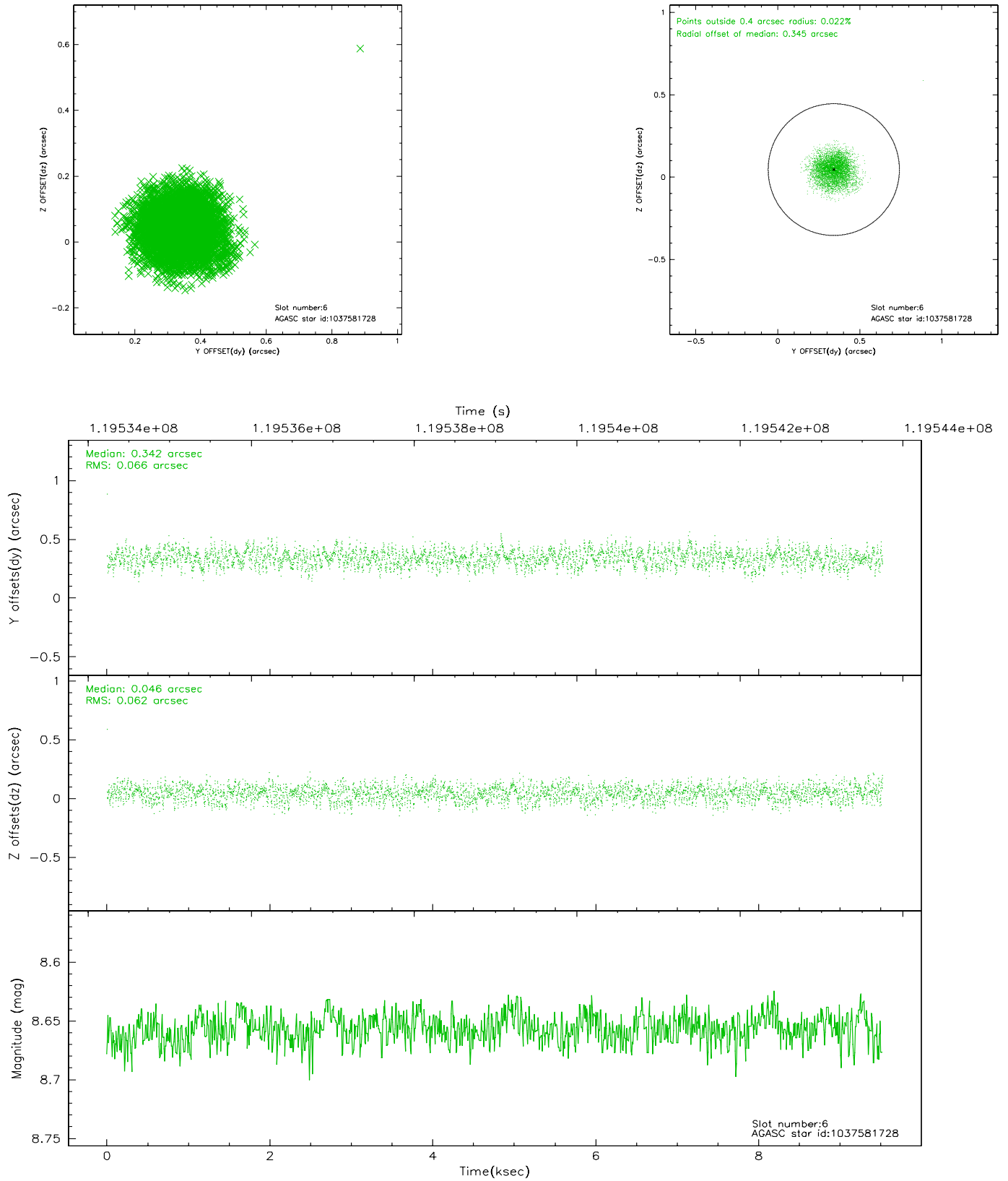
2.4.2 Slot 4



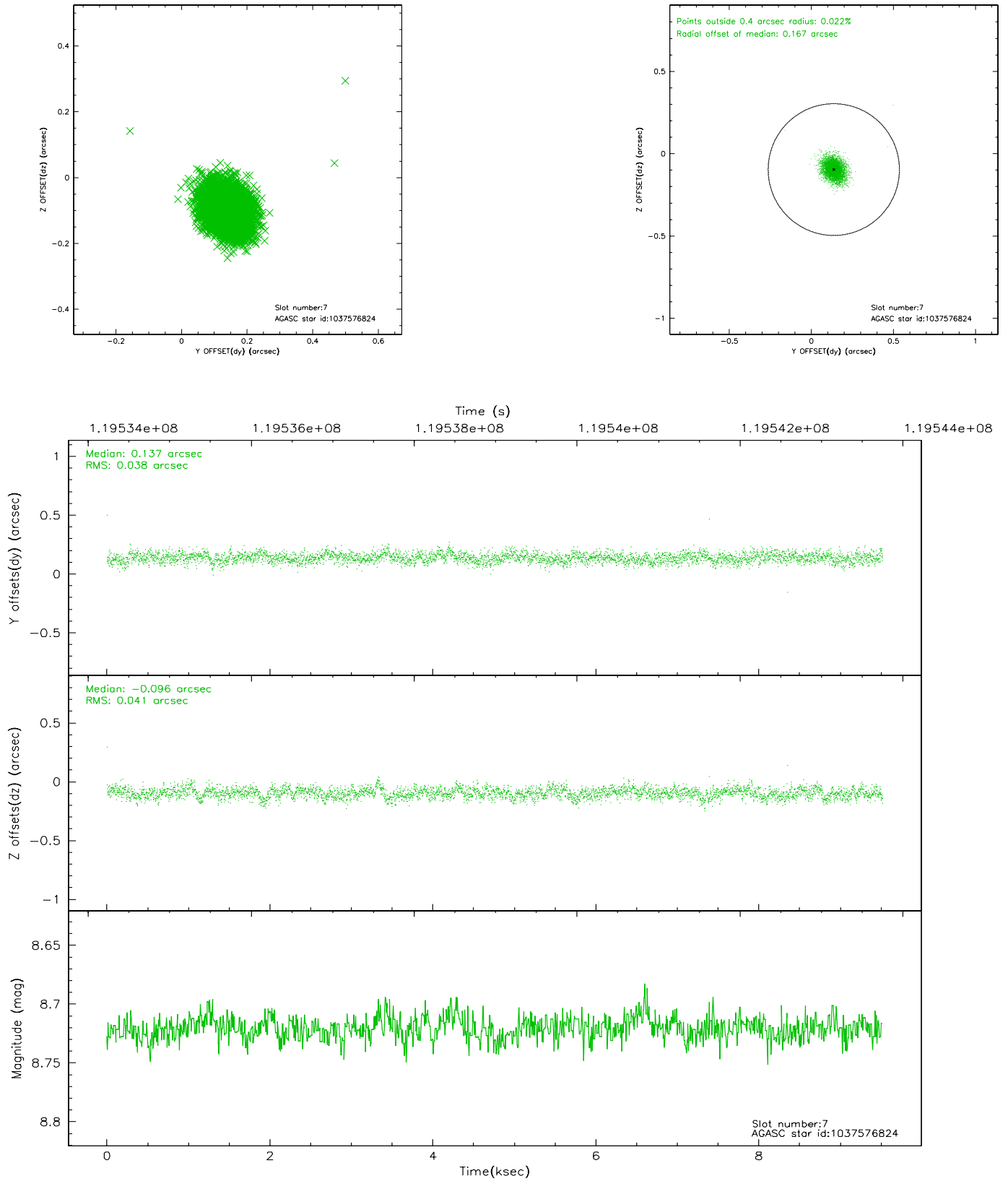
2.4.3 Slot 5



2.4.4 Slot 6

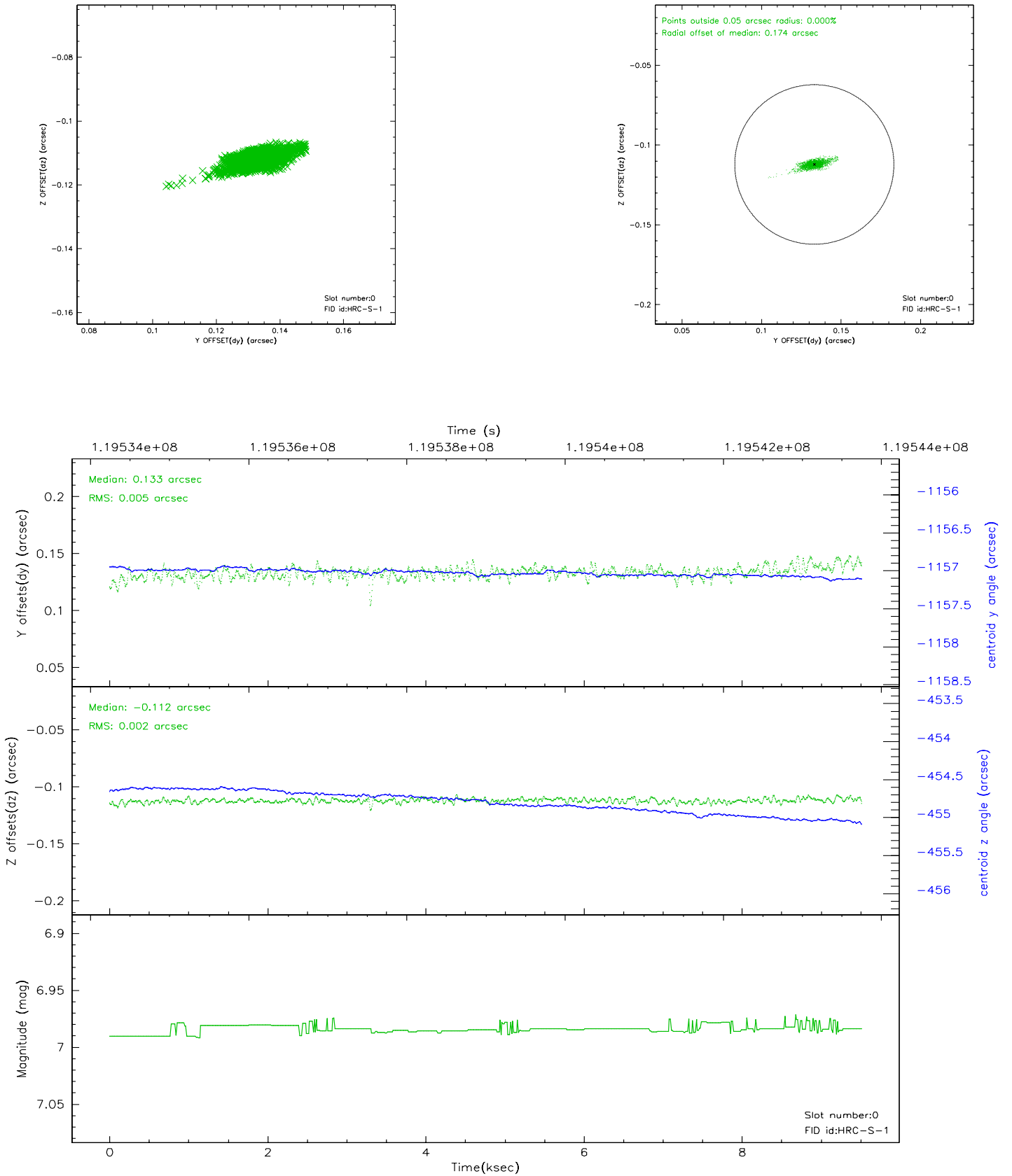


2.4.5 Slot 7

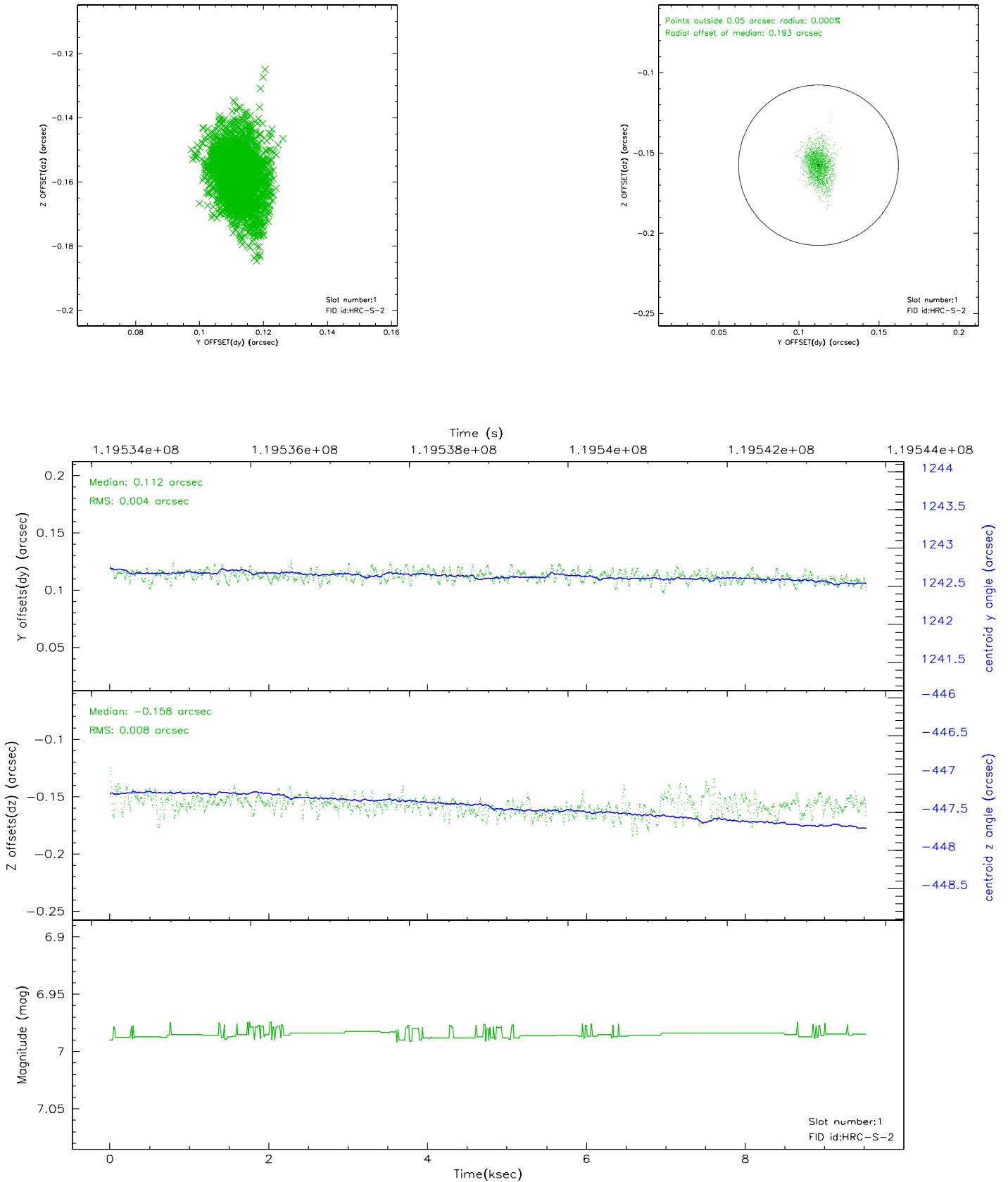


2.5 FID Slots

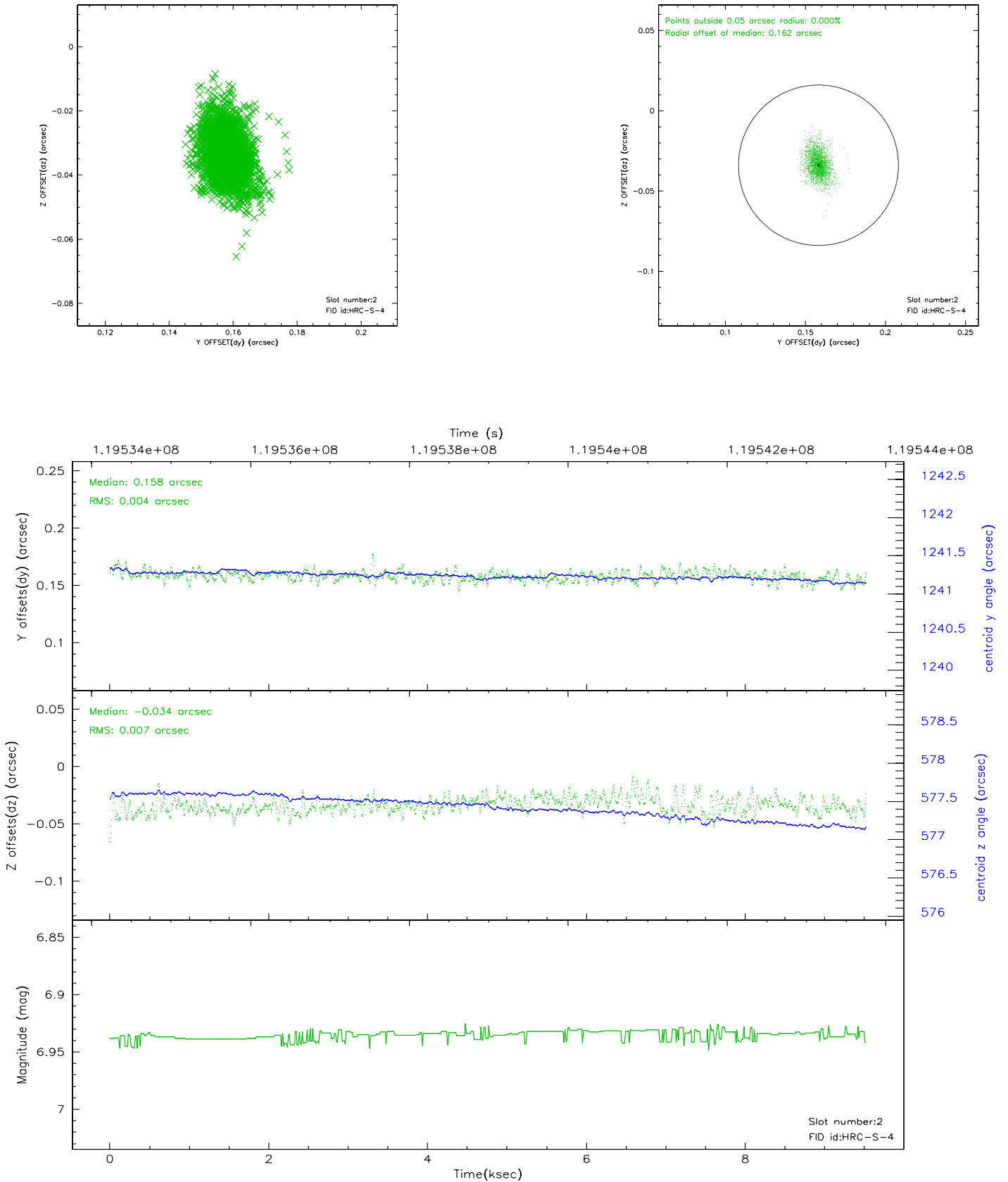
2.5.1 Slot 0



2.5.2 Slot 1

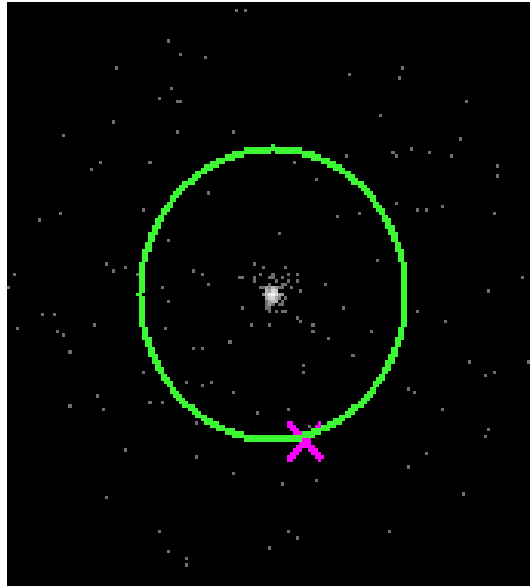


2.5.3 Slot 2

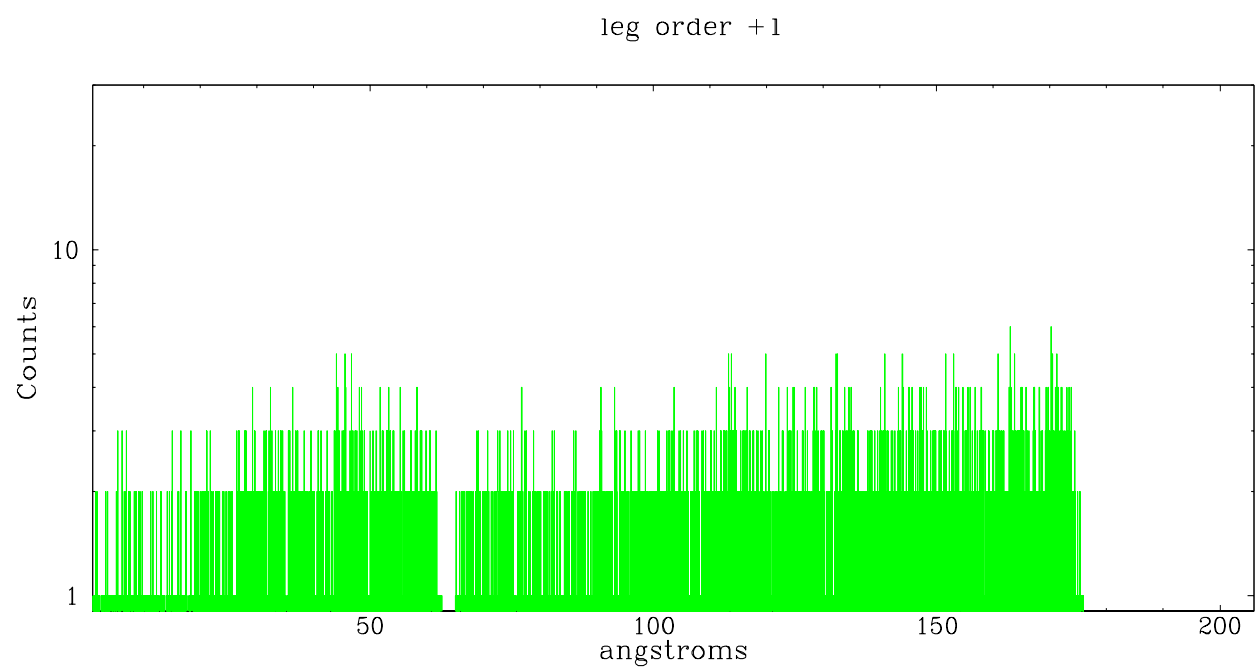
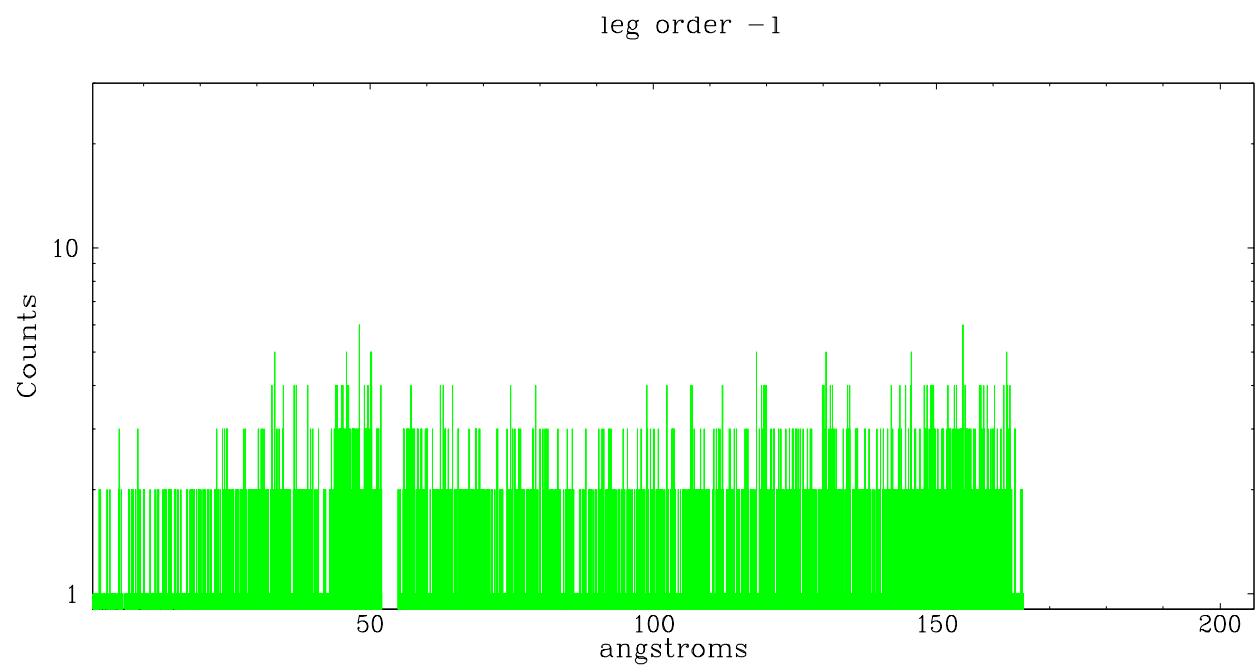


3 Gratings

3.1 LETG Arm



LETG Zero Order



A Summary

A.1 Status

V&V Scientist	Joy Nichols
V&V Date (YYYY-MM-DD)	2007.02.01
V&V Edition	1
V&V Disposition and Status	OK
V&V Charge Time	9.318

A.2 Comments

Target centered at ra=18:56:35.6, dec=-37:54:36.3. Large variations in count rate during this observation are likely the result of a high radiation environment.