

V&V Reference Report

L2 ASCDS Version : 7.6.10

Observation 3381 - L2 Version 002
Chandra X-Ray Center

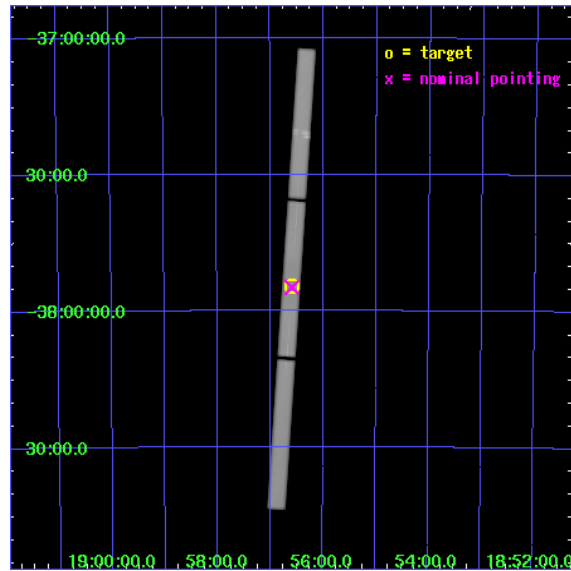
L2 Processing Date : Apr 27 2007

Contents

1	Front	2
2	OBI	3
2.1	OBI	3
2.1.1	Images	3
2.1.2	Parameters	4
2.1.3	Events	4
2.2	Compared Parameters	5
2.3	Aspect	6
2.4	Star Slots	9
2.4.1	Slot 3	9
2.4.2	Slot 4	10
2.4.3	Slot 5	11
2.4.4	Slot 6	12
2.4.5	Slot 7	13
2.5	FID Slots	14
2.5.1	Slot 0	14
2.5.2	Slot 1	15
3	Gratings	16
3.1	LETG Arm	16
A	Summary	18
A.1	Status	18
A.2	Comments	18

1 Front

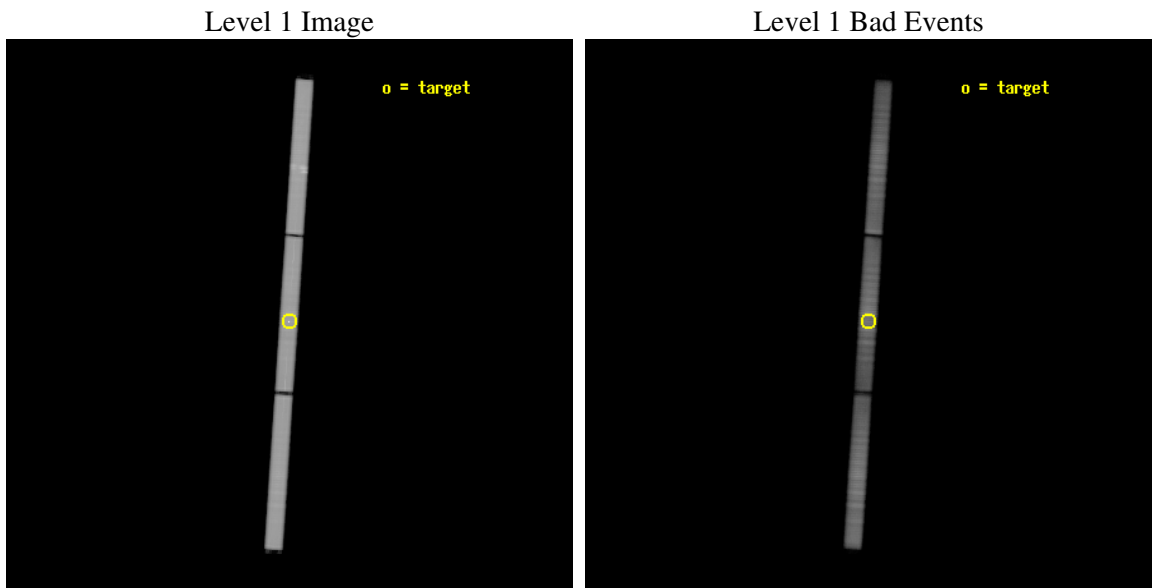
seq_num	500285
obs_id	3381
title	ARCHIVAL RESEARCH FOR ISOLATED NEUTRON STAR RXJ185635-3754
observer	DR. HARVEY TANANBAUM
object	RXJ1856.5-3754
ra_targ	284.147083
dec_targ	-37.909556
ra_nom	284.14728199511
dec_nom	-37.914285137558
roll_nom	273.77860623637
revision	3
ontime	171134.26302916
livetime	169868.70813048
l2events	9353109



2 OBI

2.1 OBI

2.1.1 Images



2.1.2 Parameters

obi_num	0
ascdsver	7.6.10
caldsver	3.3.0
date	2007-04-26T05:13:48
revision	3

sched_exp_time	171161.313000
ontime	171134.26303916
l1events	13006083

2.1.3 Events

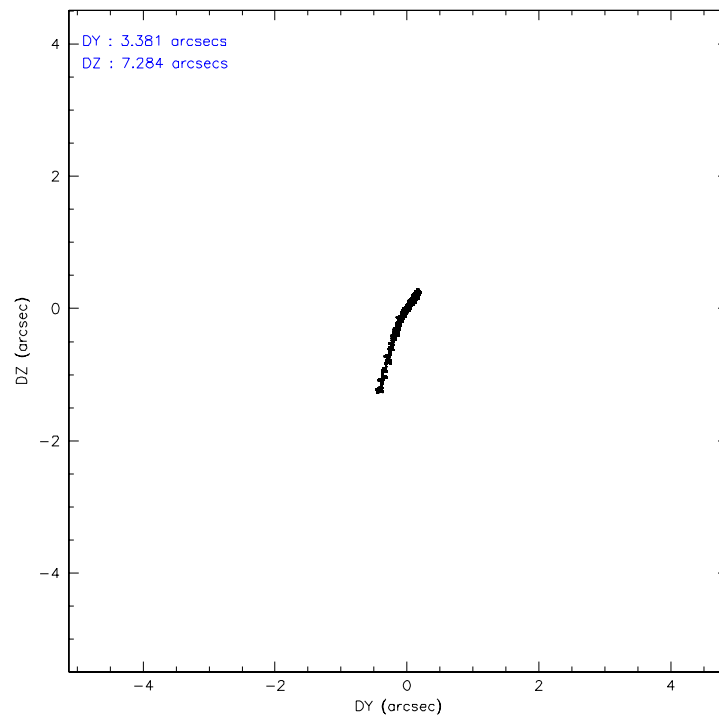
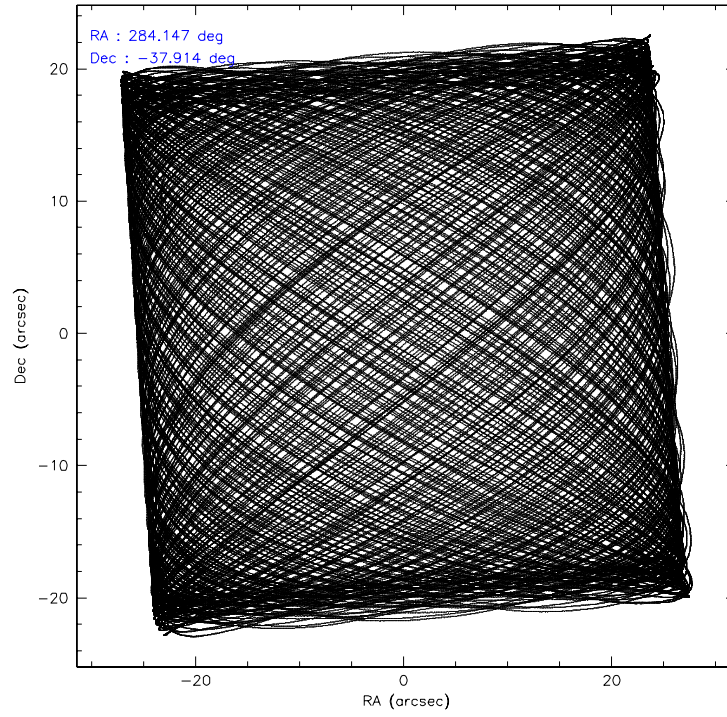
Level 1 Events

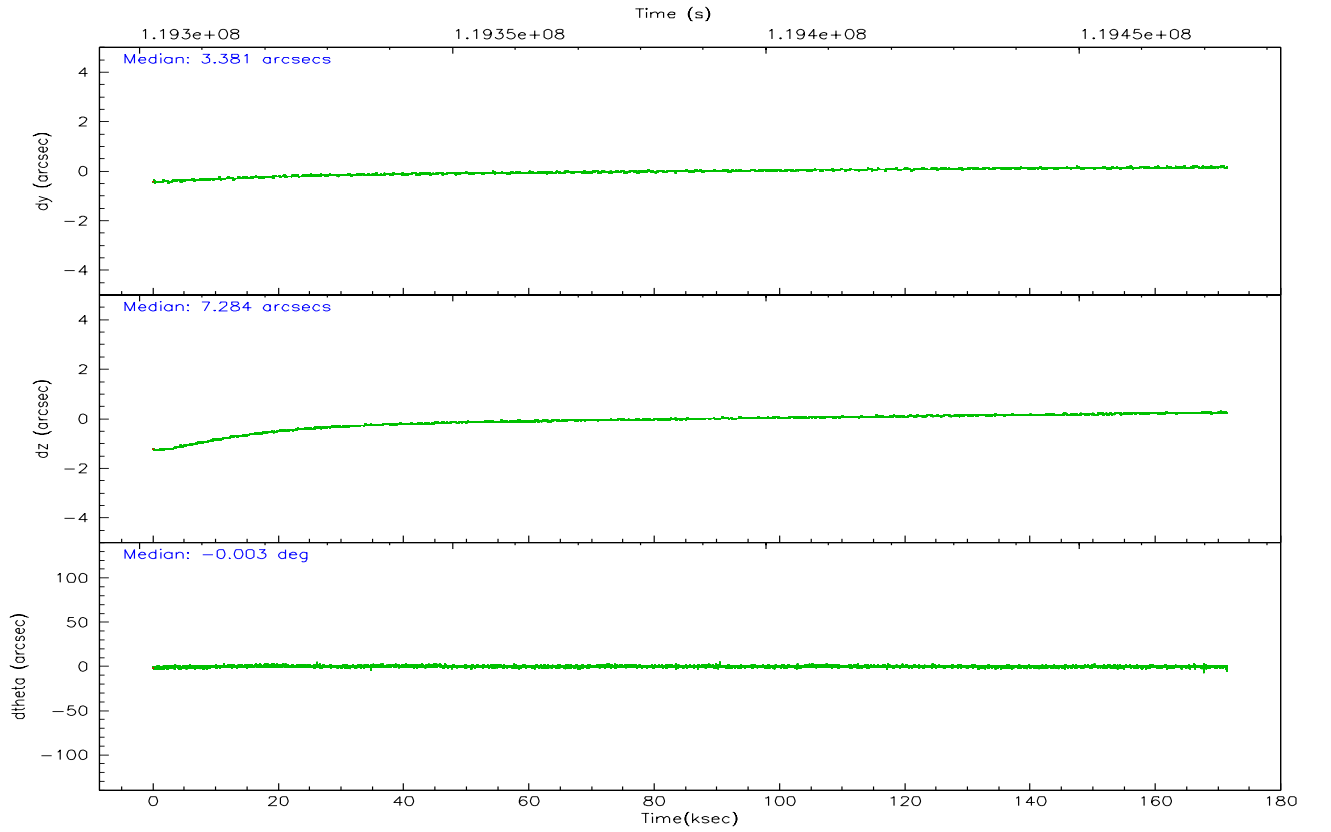
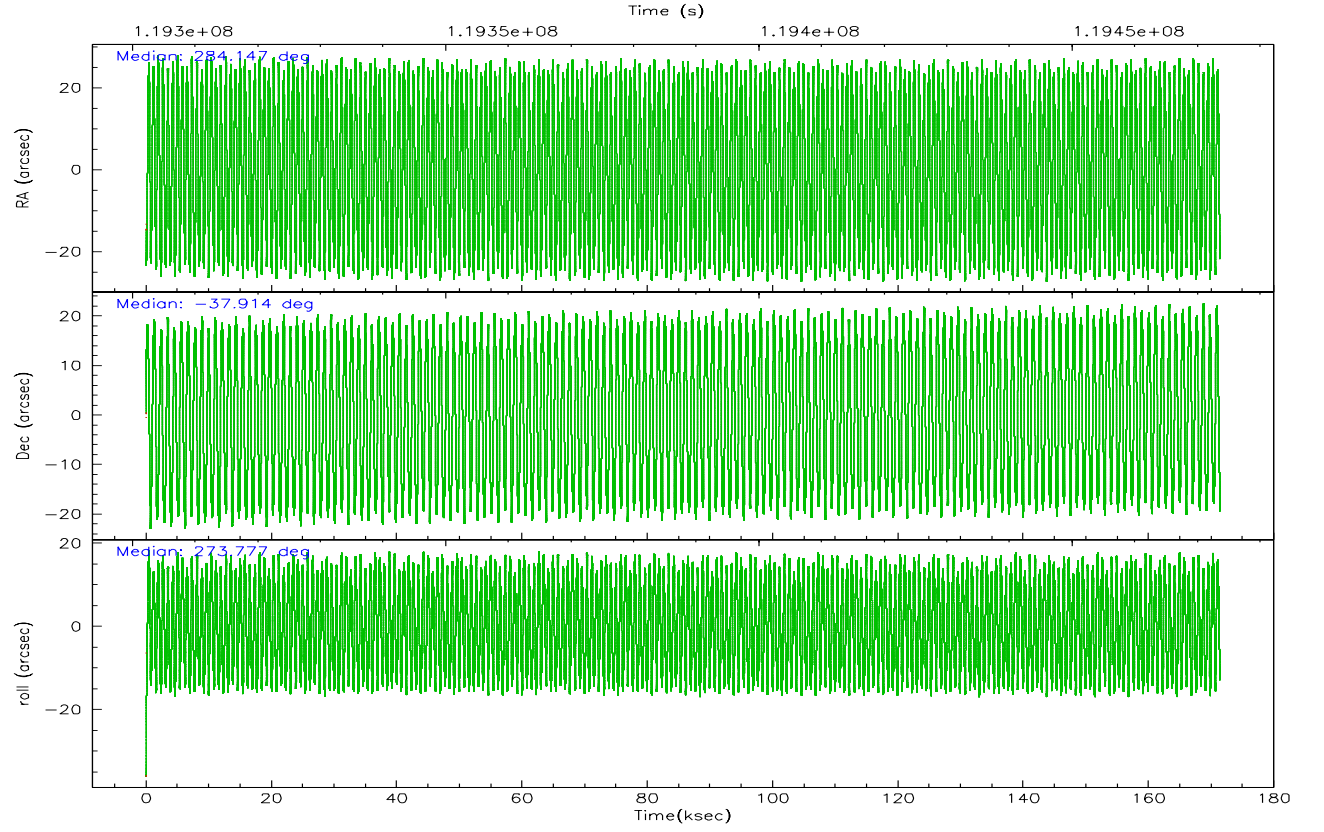
	segment 1	segment 2	segment 3
level 1 events	4588146	4225613	4192324
rejected events	783082	847369	988118
rejected %	17%	20%	23%

2.2 Compared Parameters

Parameter	Planned	Actual	Parameter	Planned	Actual
Instrument	HRC	HRC	Obspar format version number	6	6
Detector	HRC-S	HRC-S	Obspar file type	PREDICTED	ACTUAL
Grating	LETG	LETG	Obspar update status	NONE	UPDATED
Data mode	OBSERVING	OBSERVING			
Observation mode	POINTING	POINTING			
Pointing RA	284.125685	284.1472819951101			
Pointing Dec	-37.891270	-37.91428513755786			
Pointing Roll	273.698008	273.7786062363745			
SIM focus pos (mm)	-1.429586	-1.428180813131781			
SIM defocus (mm)	0.1037507710433287	0.1051558262725154			
SIM translation stage pos (mm)	250.455976	250.466033080201			
SIM translation stage offset (mm)	0	-0.01005468664627074			
Observation start time	119302356.184000	119301566.43517			
Observation start date	2001-10-12T19:31:32	2001-10-12T19:19:26			
Observation end time	119473517.184000	119474068.30451			
Observation end date	2001-10-14T19:04:13	2001-10-14T19:14:28			

2.3 Aspect



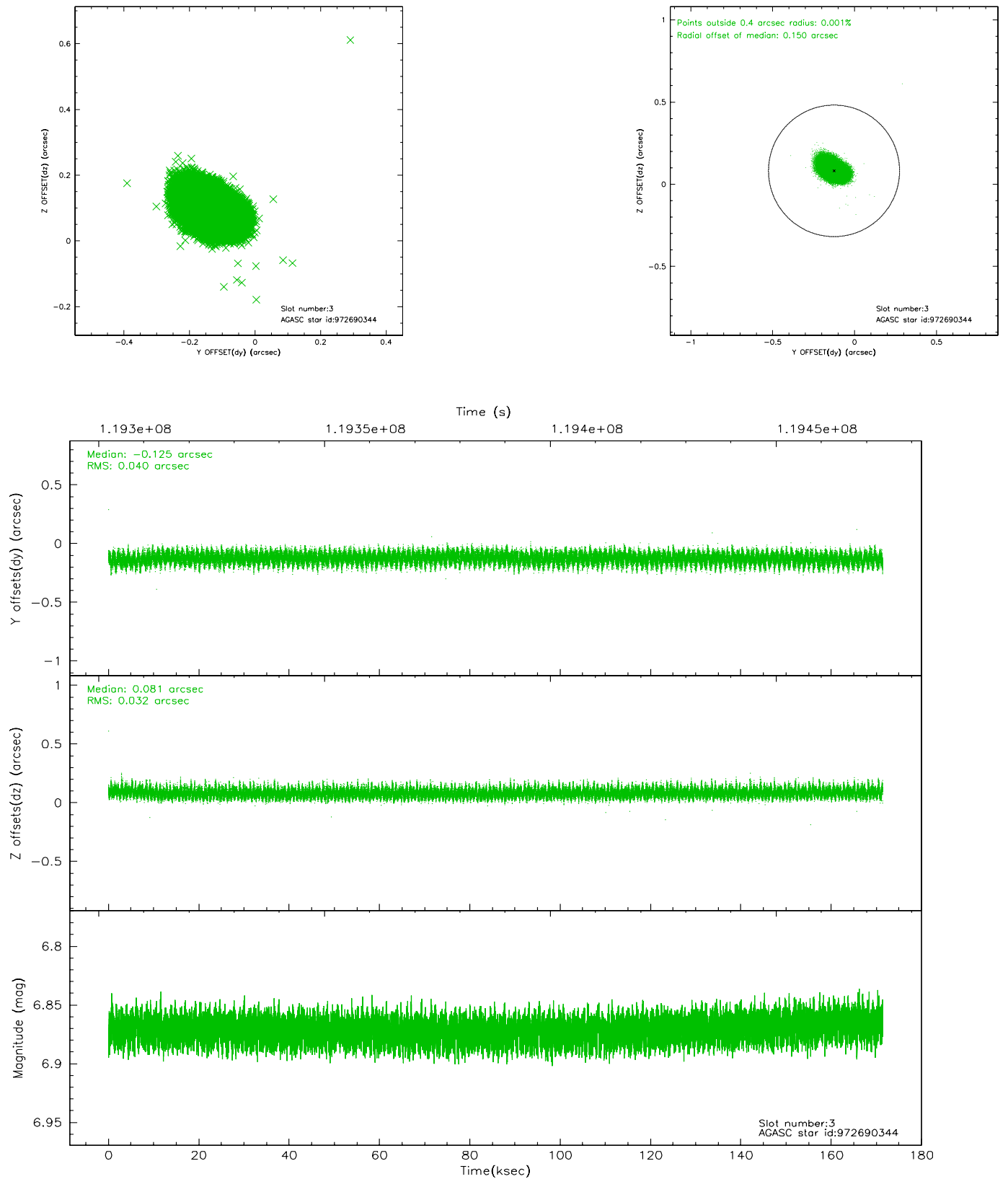


Slot Statistics

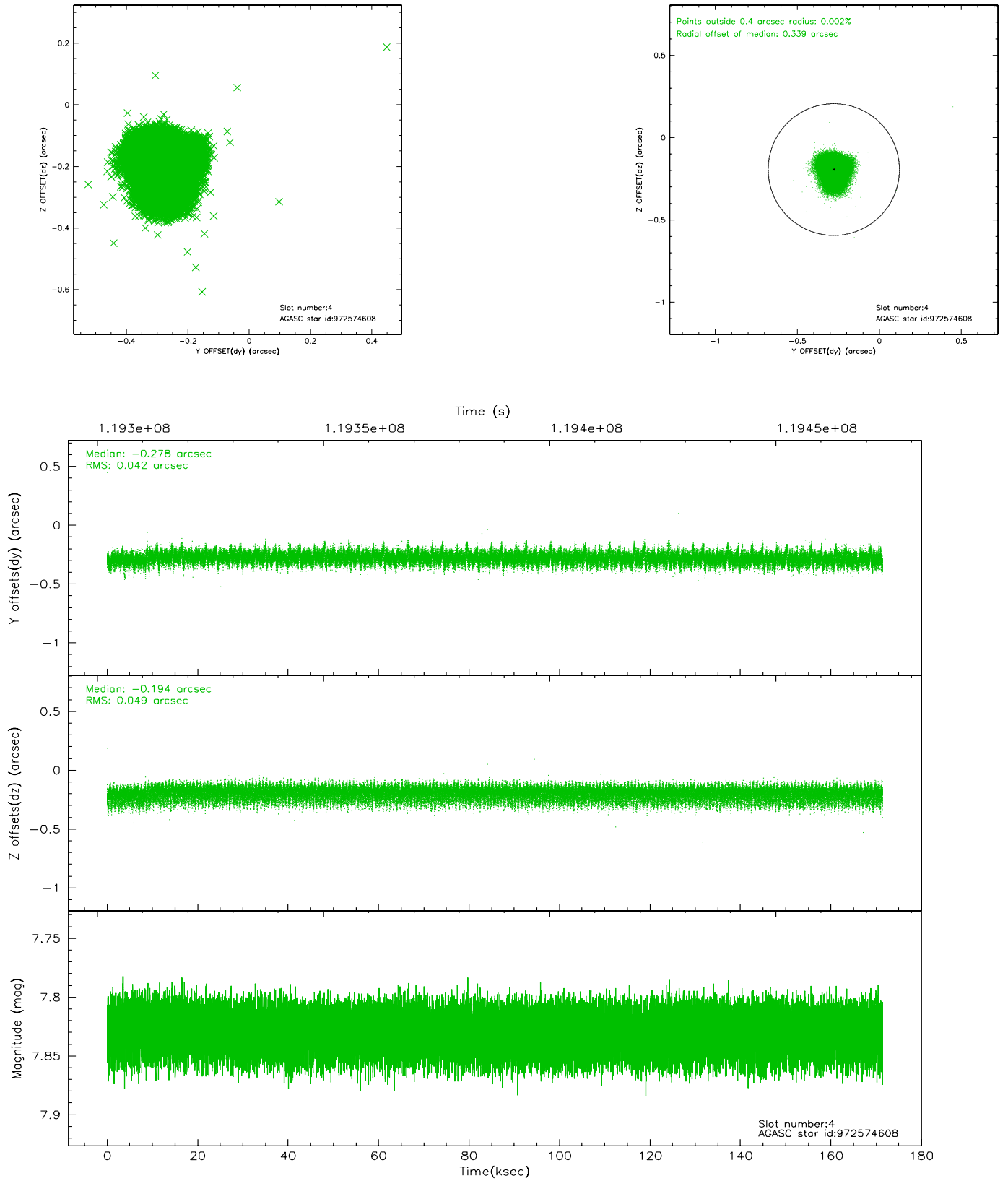
slot	status	id	mag	n_pts	med_dy	med_dz	dr1	dr2	ra	dec	mean_y	mean_z
0	FID	HRC-S-1	6.98	41811	0.169	-0.104	0.005	0.020	0.000000	0.000000	-1157.37	-455.72
1	FID	HRC-S-2	6.98	41807	0.095	-0.103	0.005	0.020	0.000000	0.000000	1242.21	-448.37
2	OMITTED		0.00	0	0.000	0.000	0.000	0.000	0.000000	0.000000	0.00	0.00
3	GUIDE	972690344	6.87	83633	-0.125	0.081	0.054	0.091	284.562162	-37.316991	-1979.53	1380.63
4	GUIDE	972574608	7.83	83626	-0.278	-0.194	0.069	0.114	283.352847	-37.274388	-2349.93	-2066.63
5	GUIDE	1037582688	8.23	83618	0.184	0.157	0.057	0.095	284.131110	-38.409051	1861.50	-104.38
6	GUIDE	1037568192	8.68	83615	0.079	0.082	0.060	0.097	284.446060	-38.037443	585.58	872.95
7	GUIDE	1037576824	8.72	83608	0.141	-0.121	0.056	0.092	284.177029	-38.323536	1562.69	44.67

2.4 Star Slots

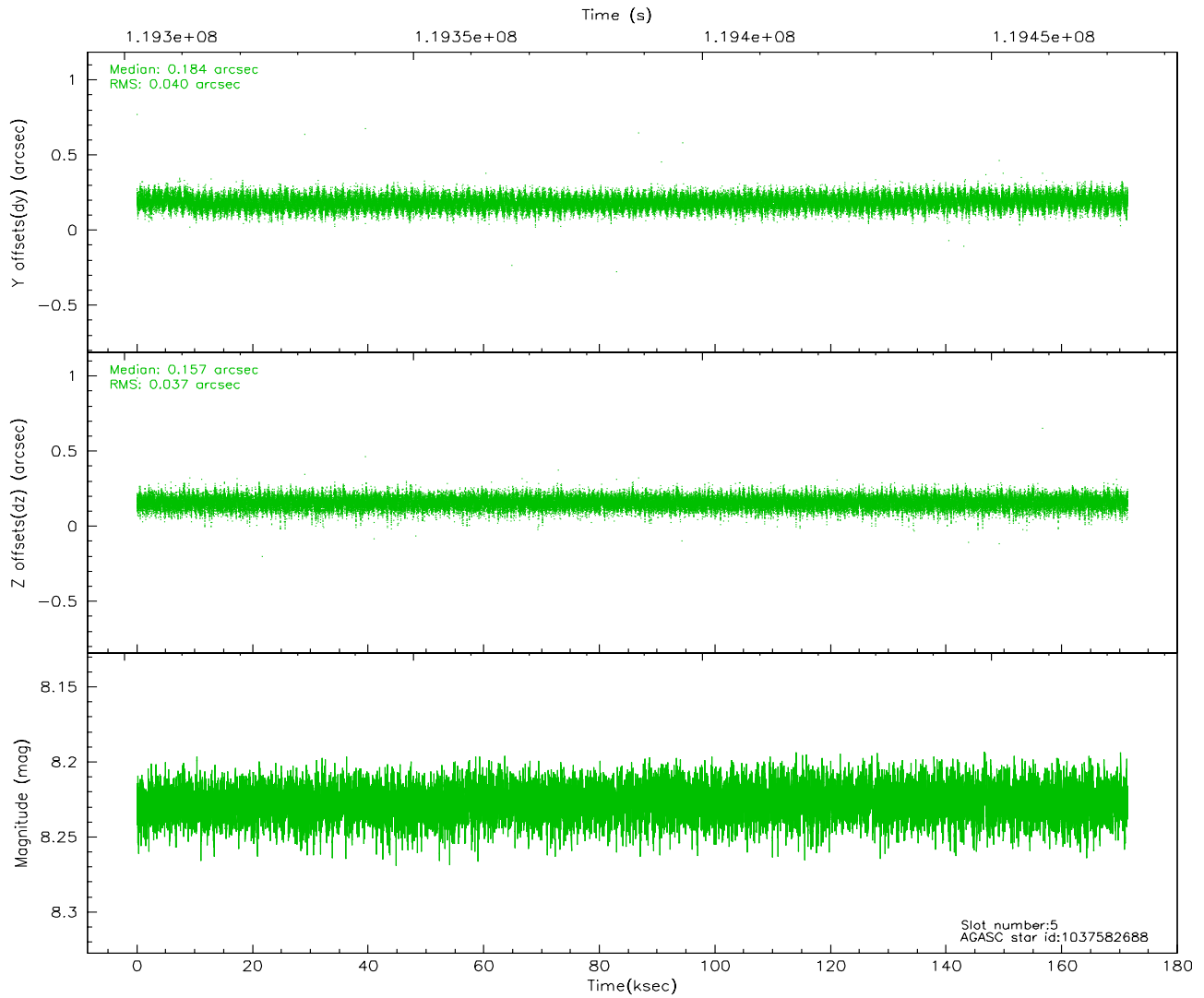
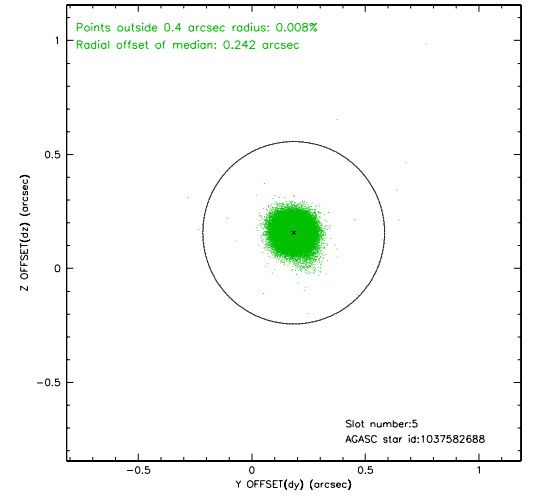
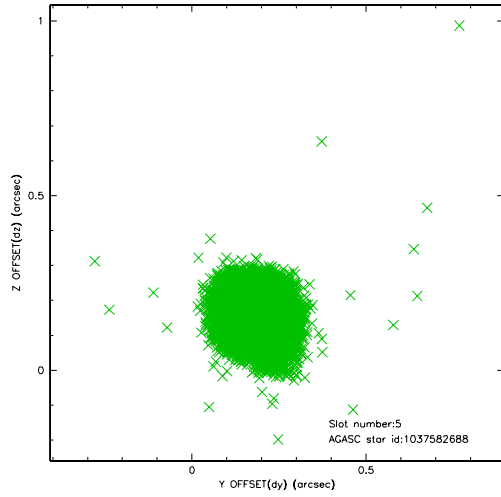
2.4.1 Slot 3



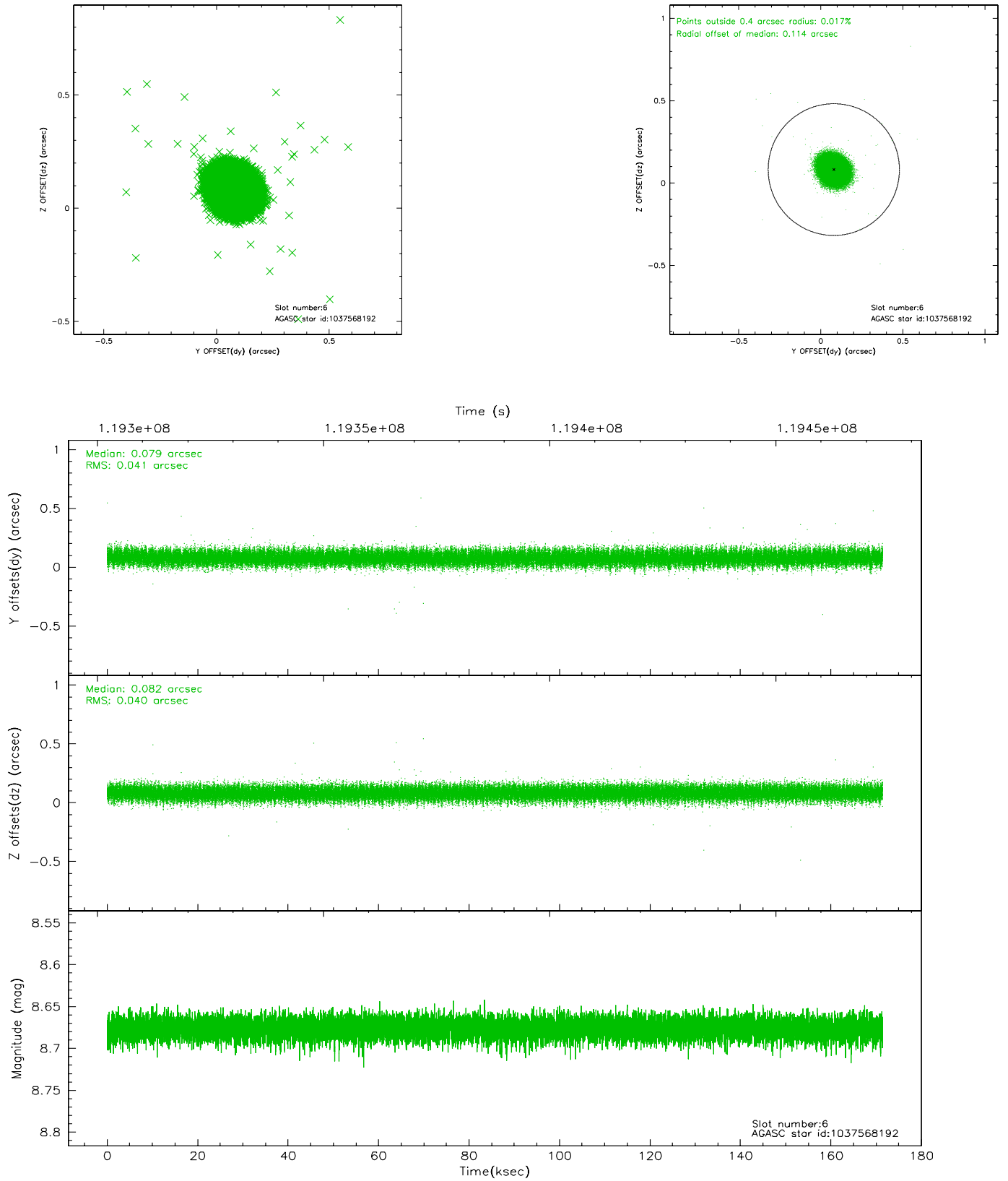
2.4.2 Slot 4



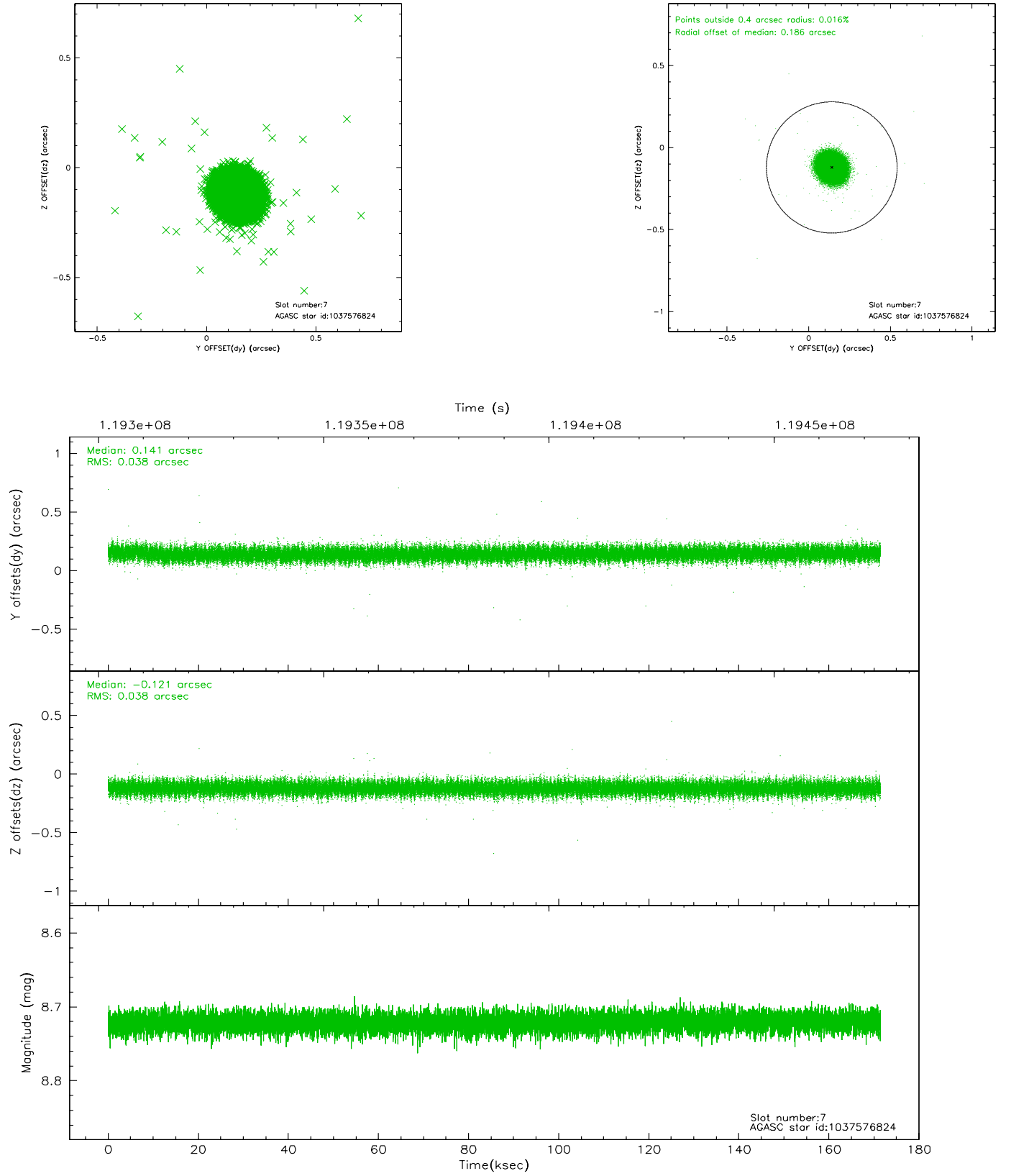
2.4.3 Slot 5



2.4.4 Slot 6

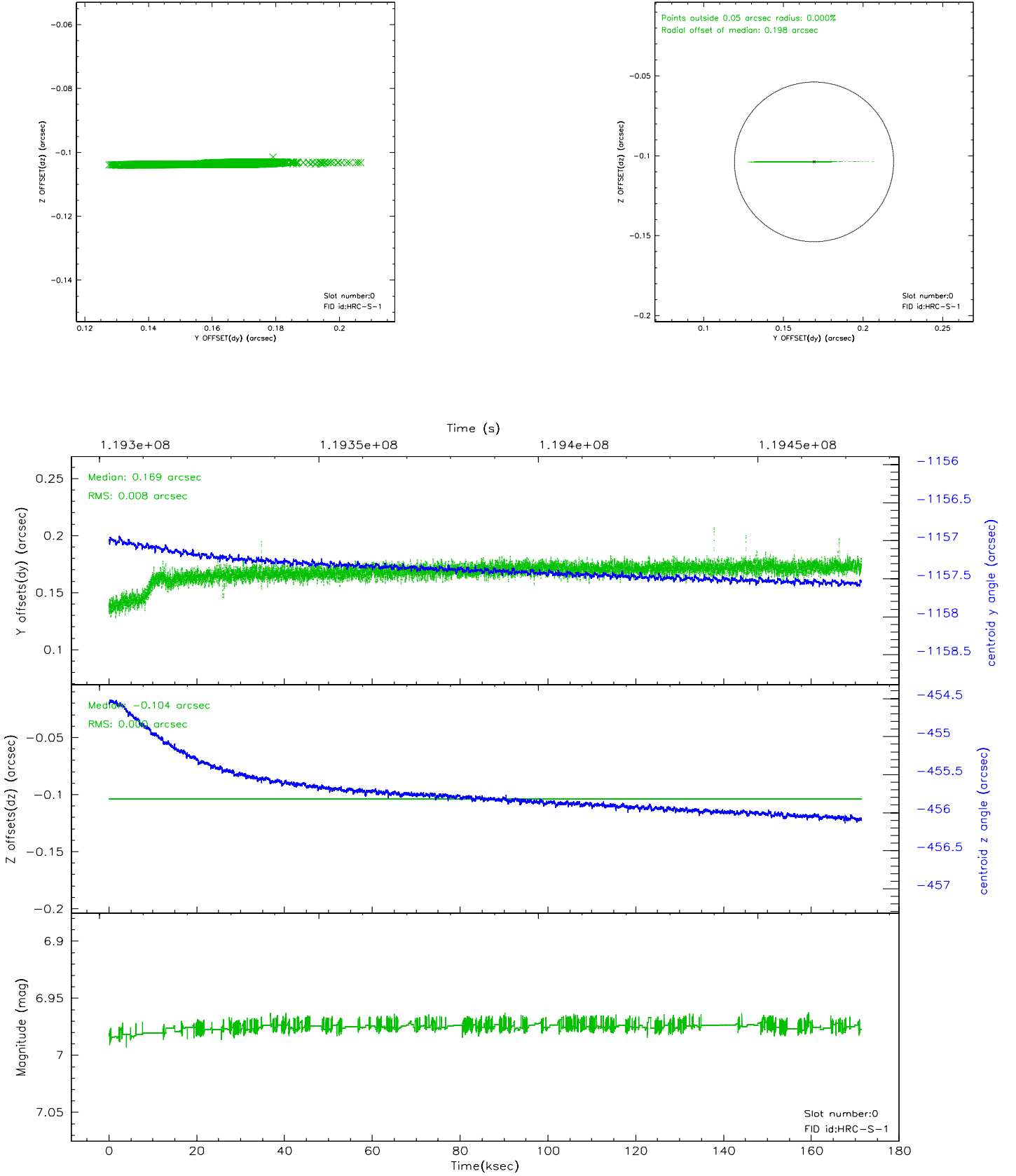


2.4.5 Slot 7

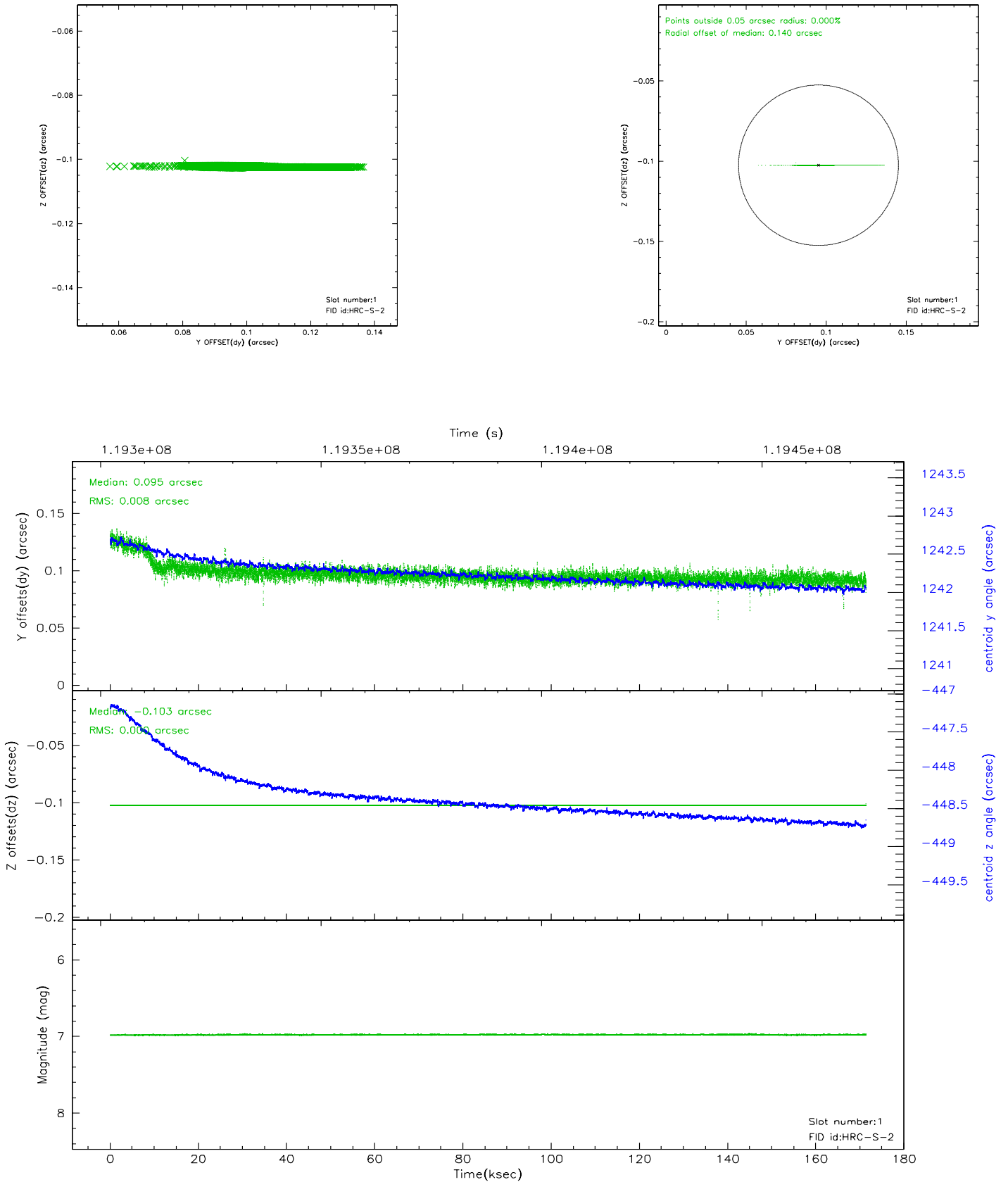


2.5 FID Slots

2.5.1 Slot 0

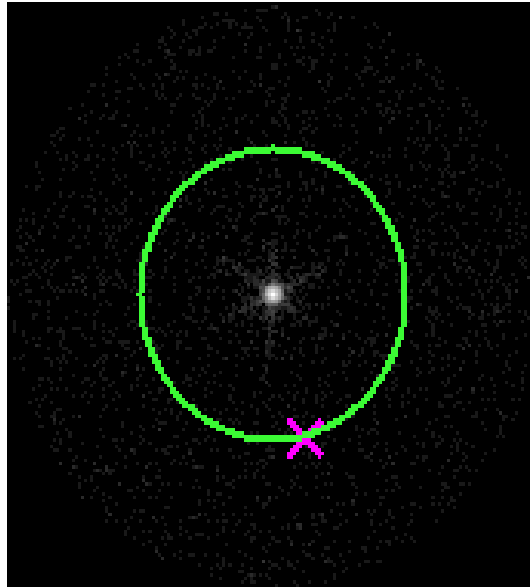


2.5.2 Slot 1



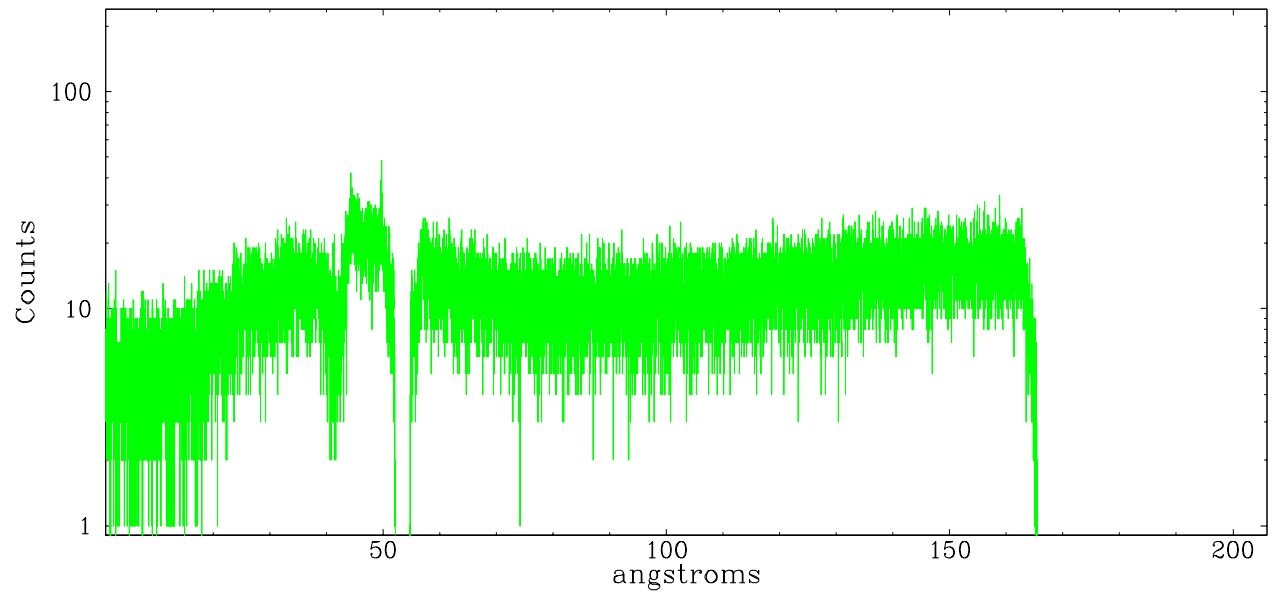
3 Gratings

3.1 LETG Arm

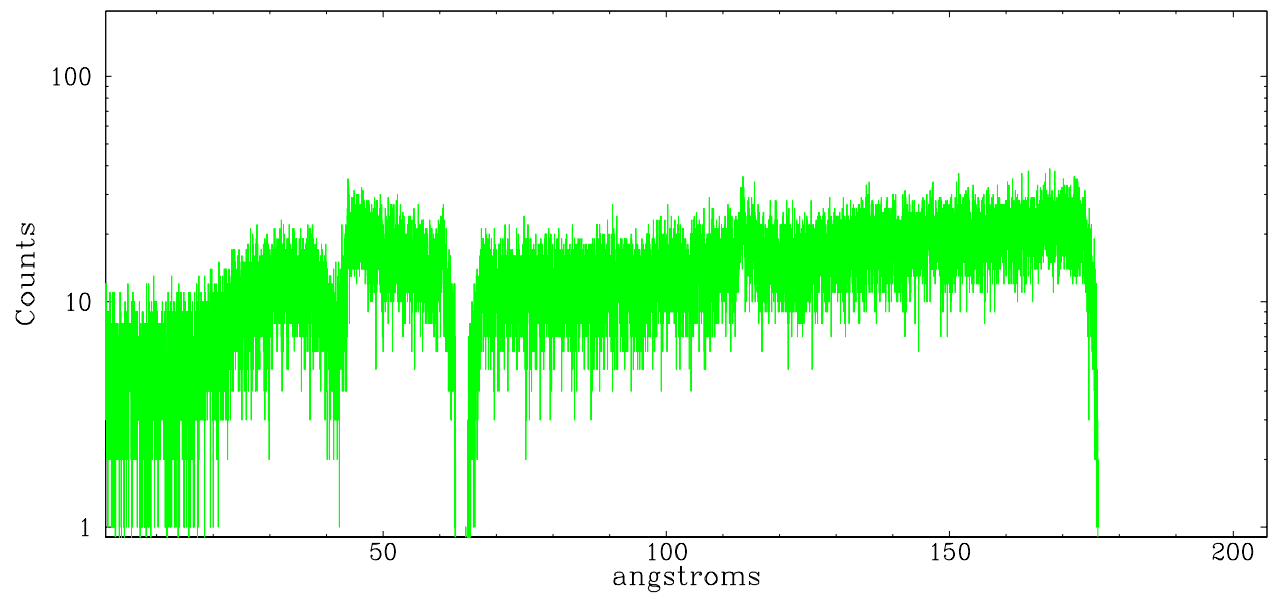


LETG Zero Order

leg order -1



leg order +1



A Summary

A.1 Status

V&V Scientist	Joy Nichols
V&V Date (YYYY-MM-DD)	2007.05.16
V&V Edition	1
V&V Disposition and Status	OK
V&V Charge Time	171.073

A.2 Comments

The fid light in slot 2 was removed from the aspect solution due to poor data quality. The aspect solution is not expected to be degraded by removing one fid light from the solution. High radiation environment during several intervals, including the first 10 ksec and last 40 ksec, of this observation caused an anomalously high count rate. The time periods involved can be easily seen in the DTF file.