

V&V Reference Report

L2 ASCDS Version : 7.6.9

Observation 3380 - L2 Version 002
Chandra X-Ray Center

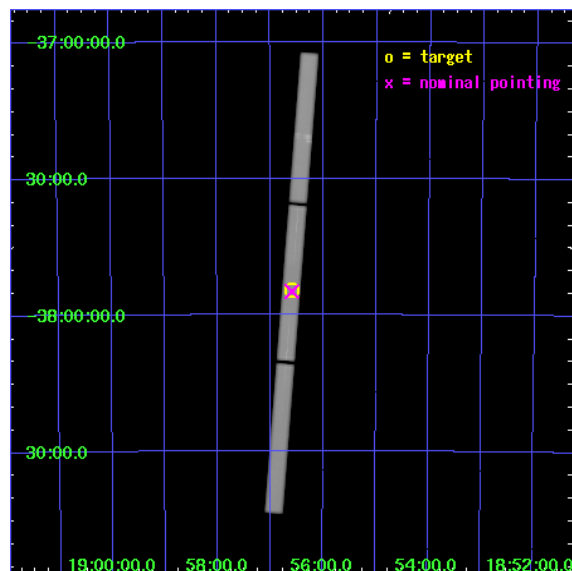
L2 Processing Date : Apr 27 2007

Contents

1	Front	2
2	OBI	3
2.1	OBI	3
2.1.1	Images	3
2.1.2	Parameters	4
2.1.3	Events	4
2.2	Compared Parameters	5
2.3	Aspect	6
2.4	Star Slots	9
2.4.1	Slot 3	9
2.4.2	Slot 4	10
2.4.3	Slot 5	11
2.4.4	Slot 6	12
2.4.5	Slot 7	13
2.5	FID Slots	14
2.5.1	Slot 0	14
2.5.2	Slot 1	15
3	Gratings	16
3.1	LETG Arm	16
A	Summary	18
A.1	Status	18
A.2	Comments	18

1 Front

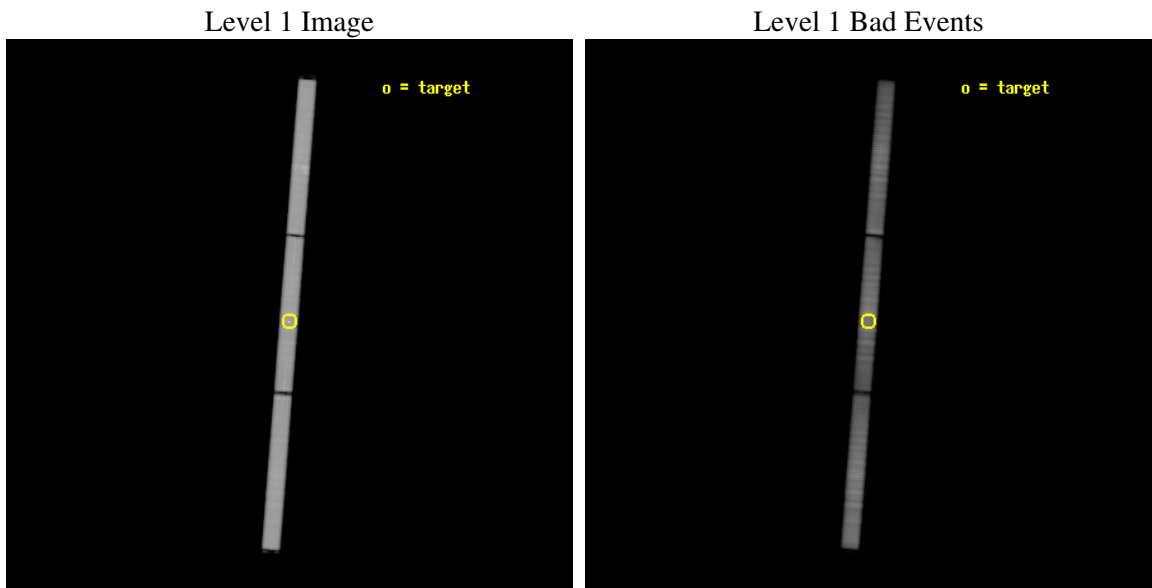
seq_num	500285
obs_id	3380
title	ARCHIVAL RESEARCH FOR ISOLATED NEUTRON STAR RXJ185635-3754
observer	DR. HARVEY TANANBAUM
object	RXJ1856.5-3754
ra_targ	284.147083
dec_targ	-37.909556
ra_nom	284.14736349859
dec_nom	-37.914296701099
roll_nom	274.4561525378
revision	3
ontime	167503.71289465
livetime	166281.98449726
l2events	8663959



2 OBI

2.1 OBI

2.1.1 Images



2.1.2 Parameters

obi_num	0
ascdsver	7.6.10
caldbver	3.3.0
date	2007-04-26T05:33:56
revision	3

sched_exp_time	167519.206000
ontime	167503.71289465
l1events	12403610

2.1.3 Events

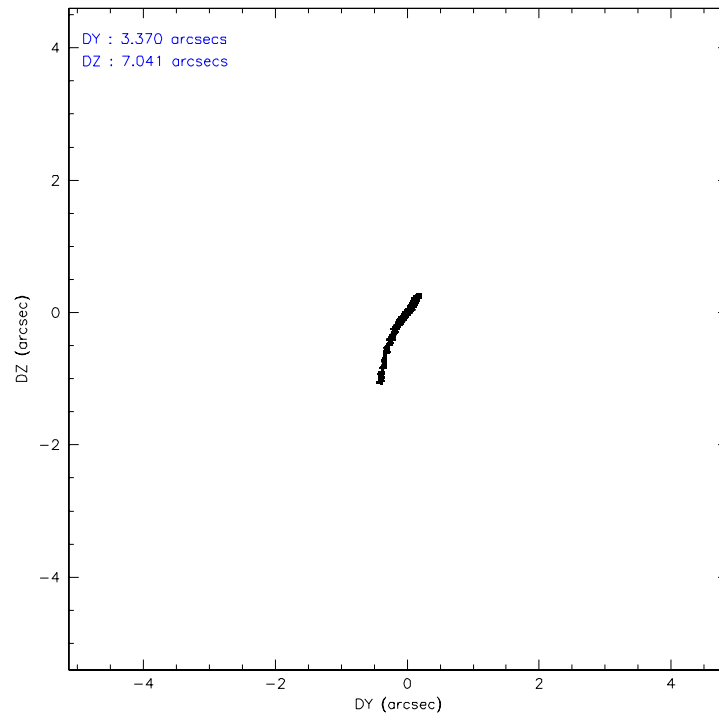
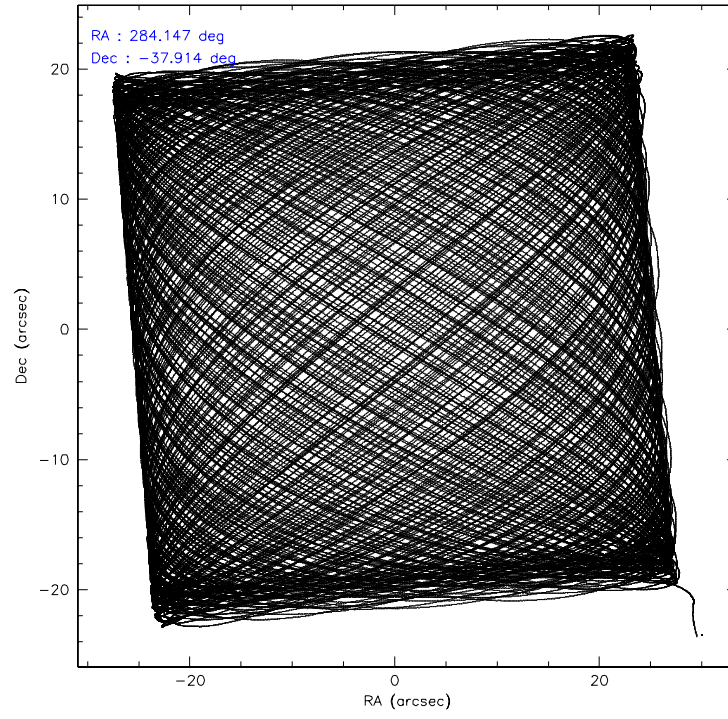
Level 1 Events

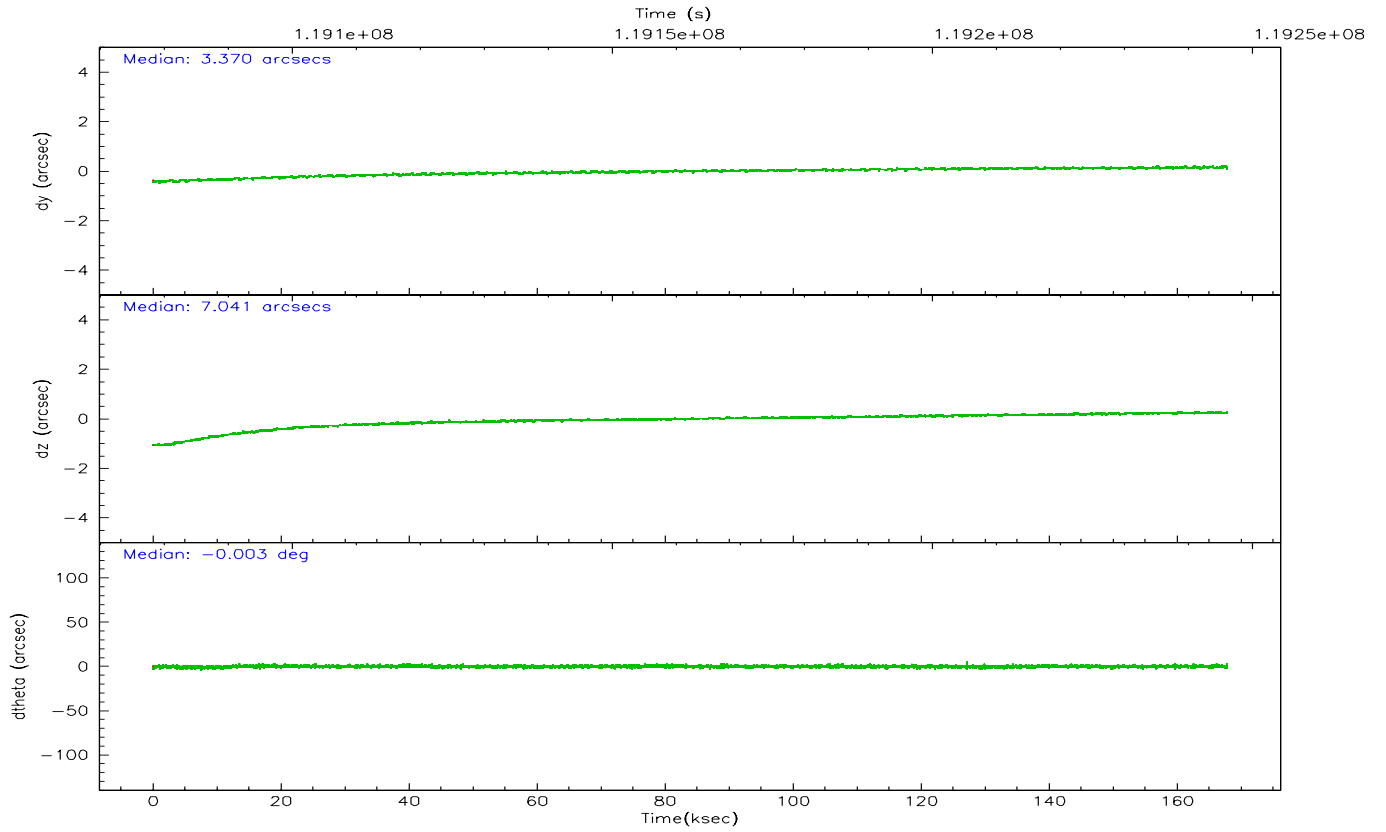
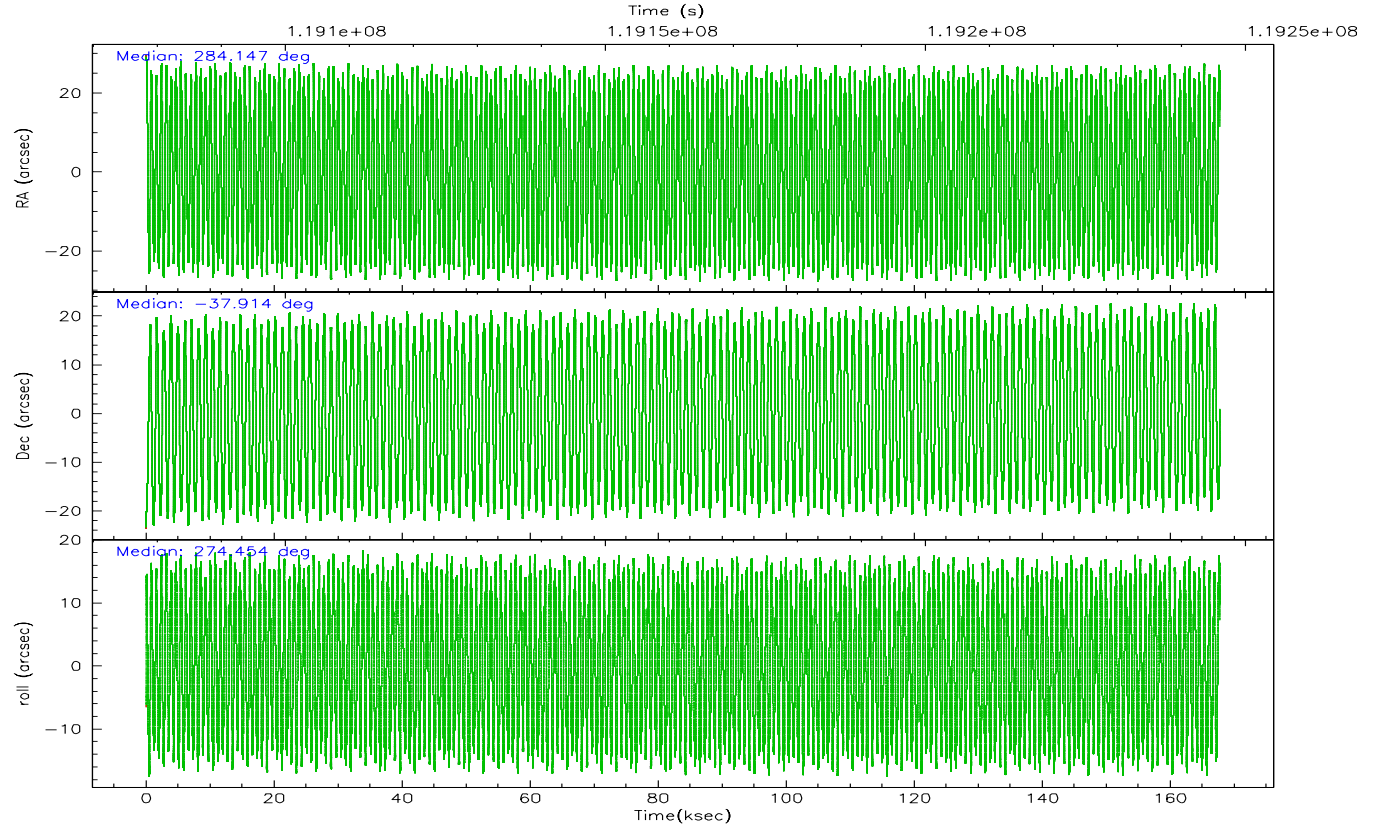
	segment 1	segment 2	segment 3
level 1 events	4303904	4058858	4040848
rejected events	810470	877241	1007634
rejected %	18%	21%	24%

2.2 Compared Parameters

Parameter	Planned	Actual	Parameter	Planned	Actual
Instrument	HRC	HRC	Obspar format version number	6	6
Detector	HRC-S	HRC-S	Obspar file type	PREDICTED	ACTUAL
Grating	LETG	LETG	Obspar update status	NONE	UPDATED
Data mode	OBSERVING	OBSERVING			
Observation mode	POINTING	POINTING			
Pointing RA	284.125414	284.1473634985874			
Pointing Dec	-37.891477	-37.91429670109942			
Pointing Roll	274.375339	274.4561525377973			
SIM focus pos (mm)	-1.429586	-1.428180813131781			
SIM defocus (mm)	0.1037507710433287	0.1051558262725154			
SIM translation stage pos (mm)	250.455976	250.466033080201			
SIM translation stage offset (mm)	0	-0.01005468664627074			
Observation start time	119078378.184000	119077588.55129			
Observation start date	2001-10-10T05:18:34	2001-10-10T05:06:28			
Observation end time	119245898.184000	119246448.59548			
Observation end date	2001-10-12T03:50:34	2001-10-12T04:00:48			

2.3 Aspect



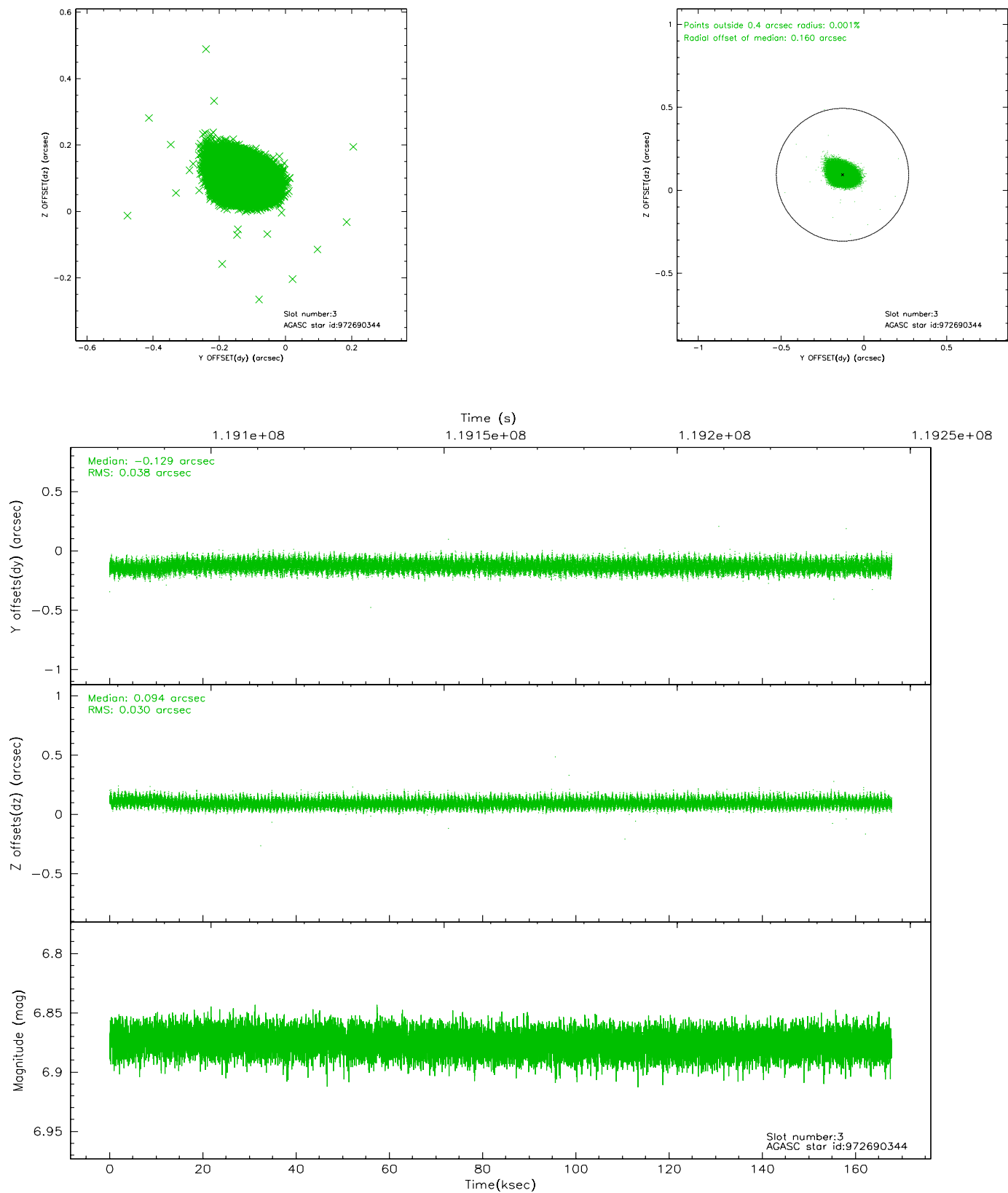


Slot Statistics

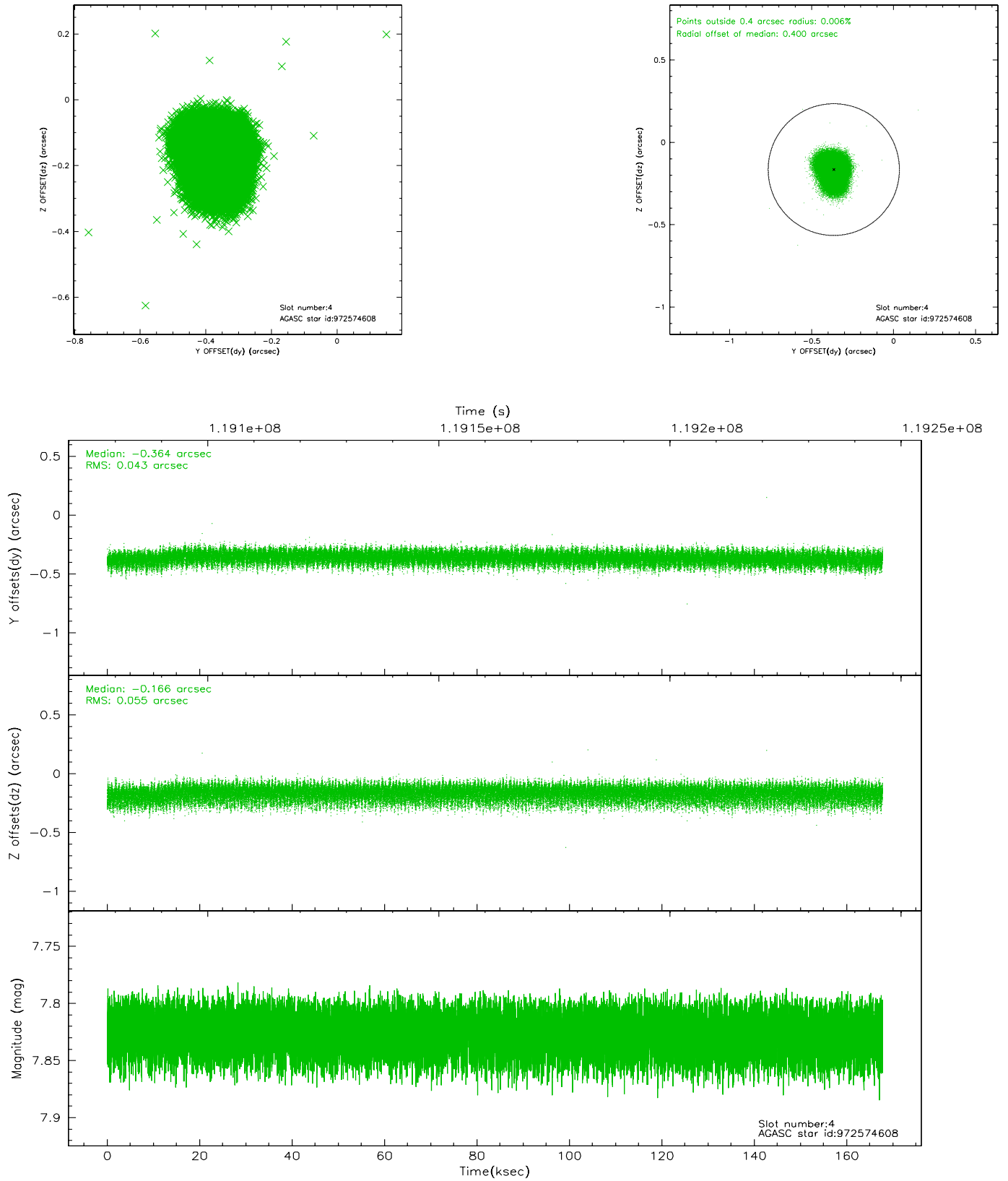
slot	status	id	mag	n_pts	med_dy	med_dz	dr1	dr2	ra	dec	mean_y	mean_z
0	FID	HRC-S-1	6.97	40928	0.167	-0.104	0.005	0.023	0.000000	0.000000	-1157.35	-455.50
1	FID	HRC-S-2	6.98	40927	0.097	-0.103	0.005	0.023	0.000000	0.000000	1242.23	-448.15
2	OMITTED		0.00	0	0.000	0.000	0.000	0.000	0.000000	0.000000	0.00	0.00
3	GUIDE	972690344	6.87	81860	-0.129	0.094	0.051	0.083	284.562162	-37.316991	-1963.75	1404.78
4	GUIDE	972574608	7.82	81854	-0.364	-0.166	0.074	0.121	283.352847	-37.274388	-2374.92	-2037.86
5	GUIDE	1037582688	8.23	81850	0.138	0.097	0.055	0.093	284.131110	-38.409051	1859.44	-125.56
6	GUIDE	1037568192	8.67	81838	0.056	0.042	0.059	0.096	284.446060	-38.037443	595.17	866.79
7	GUIDE	1037581728	8.66	81843	0.302	-0.066	0.106	0.158	283.813802	-38.579091	2403.39	-1062.97

2.4 Star Slots

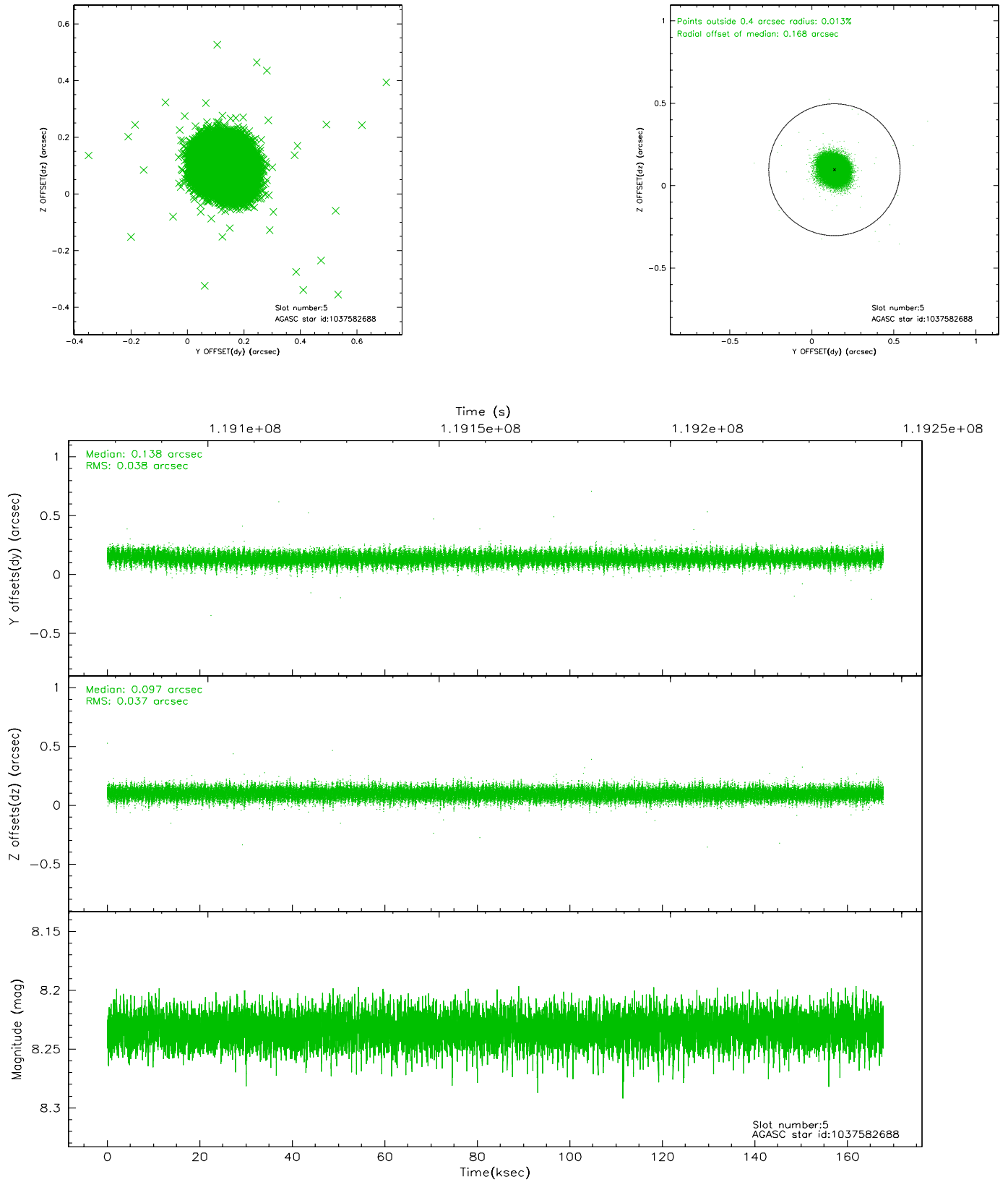
2.4.1 Slot 3



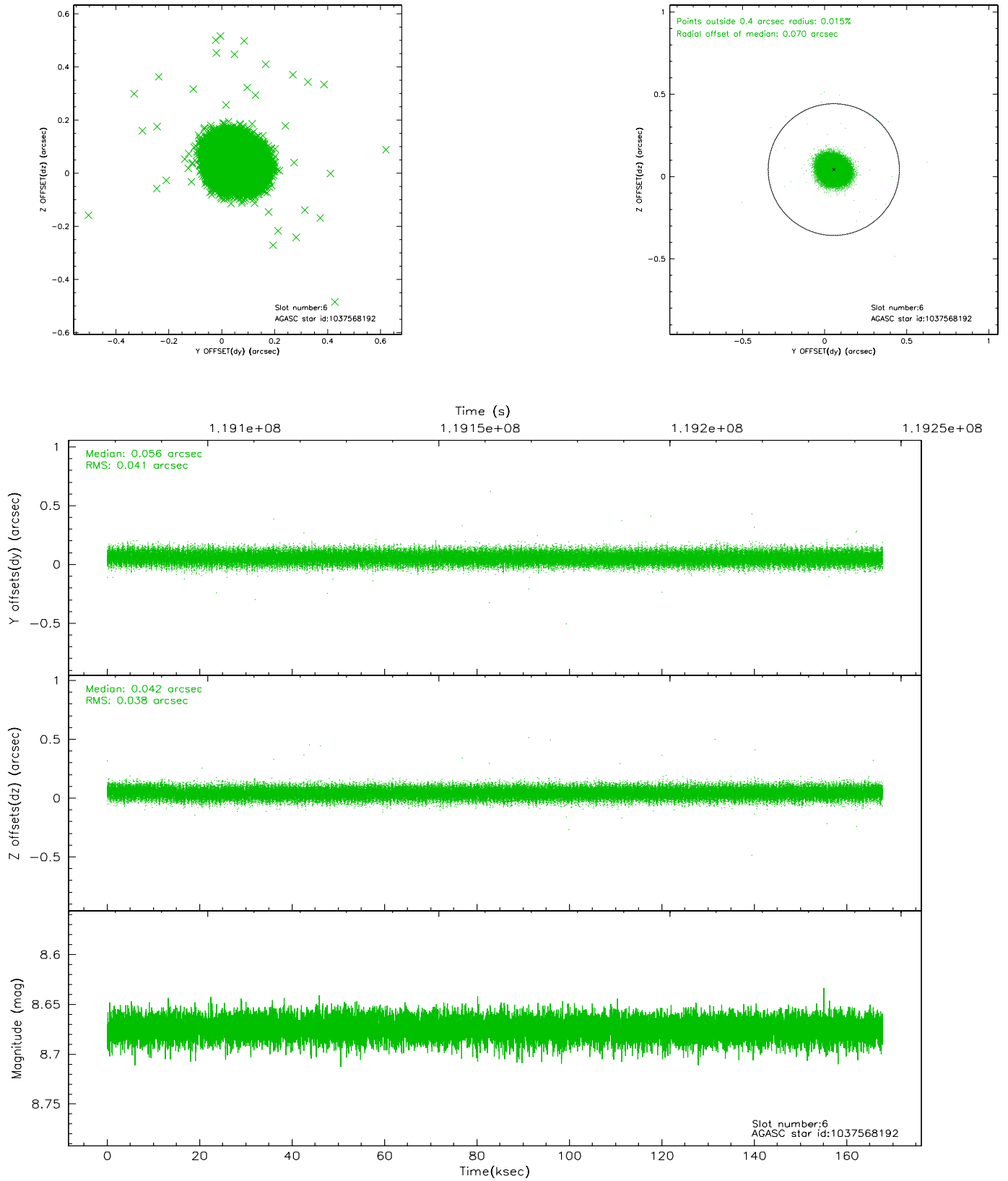
2.4.2 Slot 4



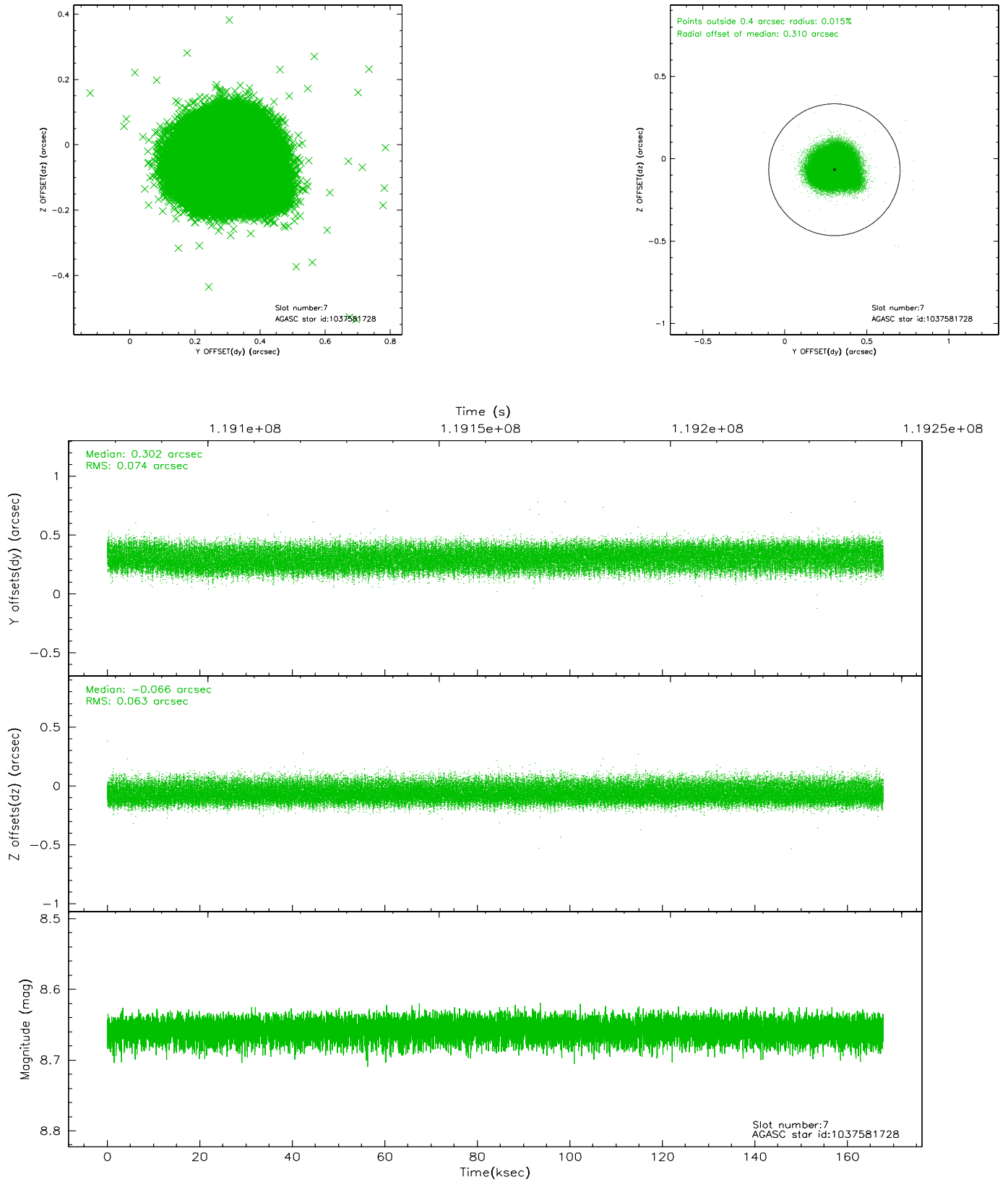
2.4.3 Slot 5



2.4.4 Slot 6

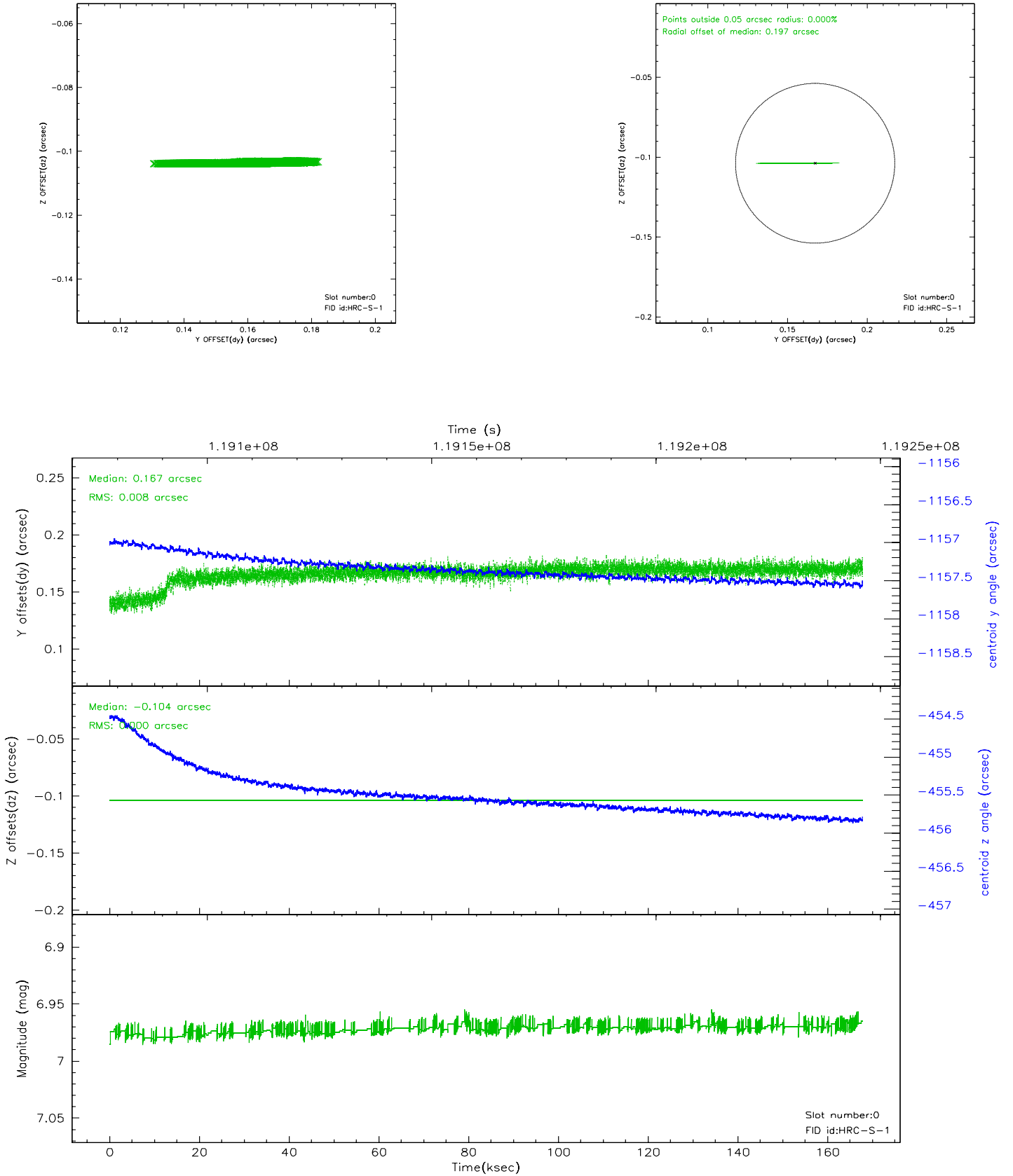


2.4.5 Slot 7

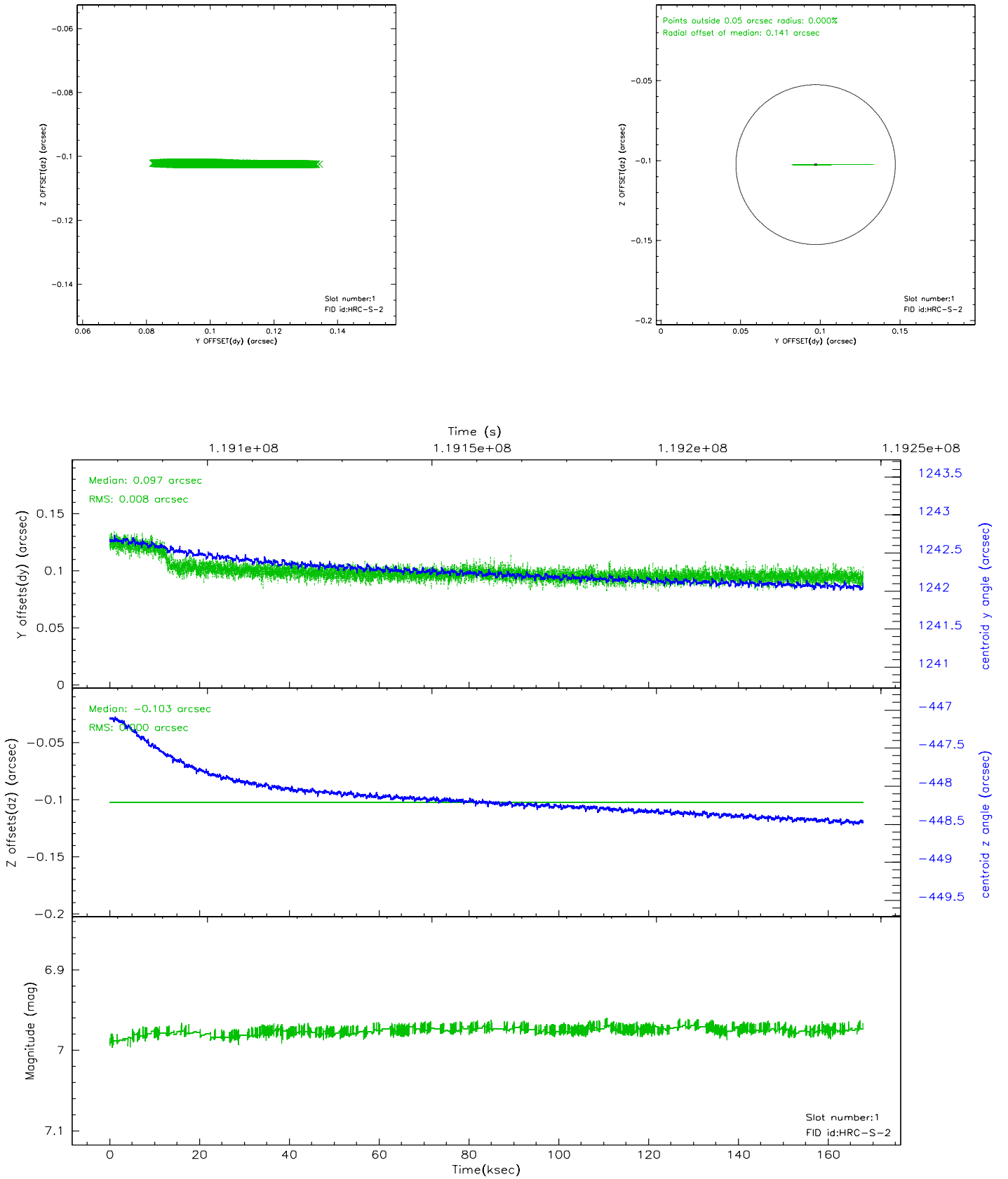


2.5 FID Slots

2.5.1 Slot 0

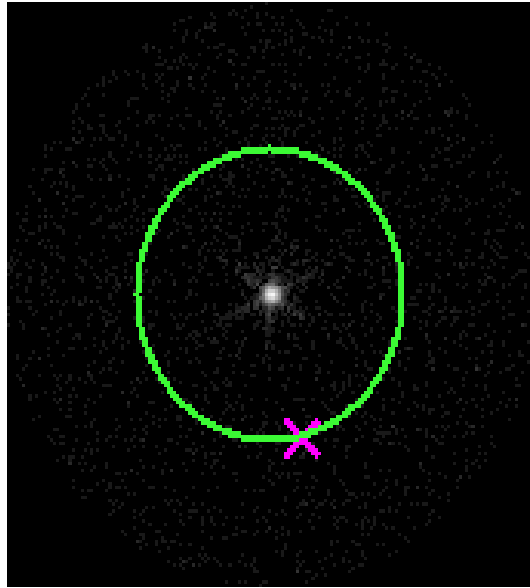


2.5.2 Slot 1



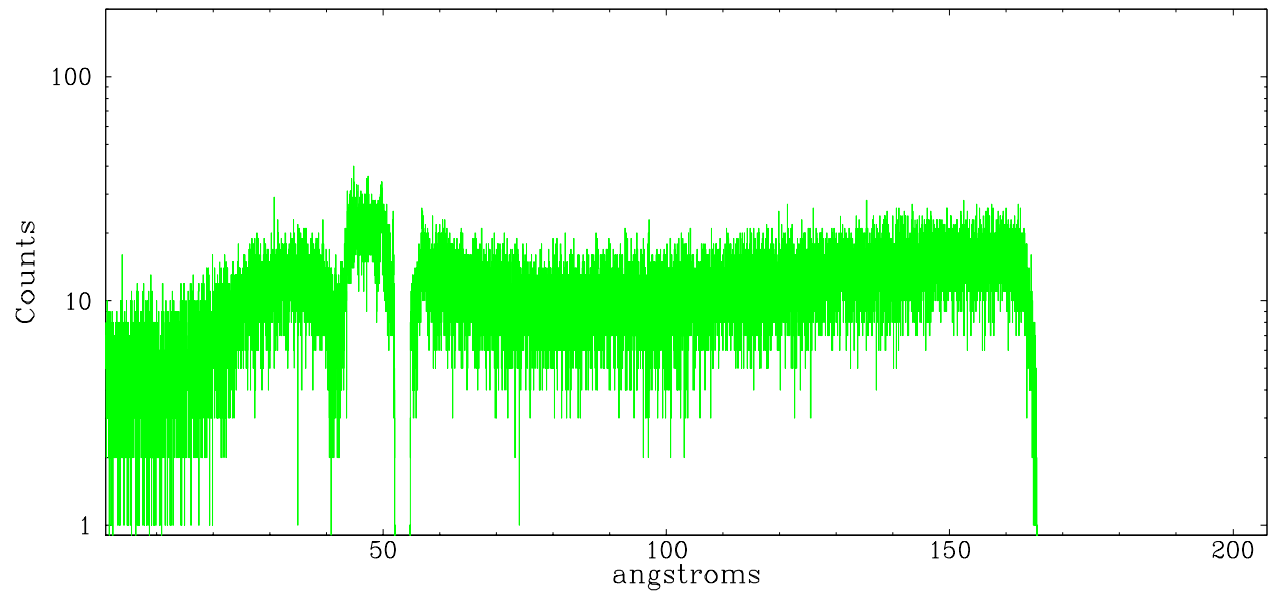
3 Gratings

3.1 LETG Arm

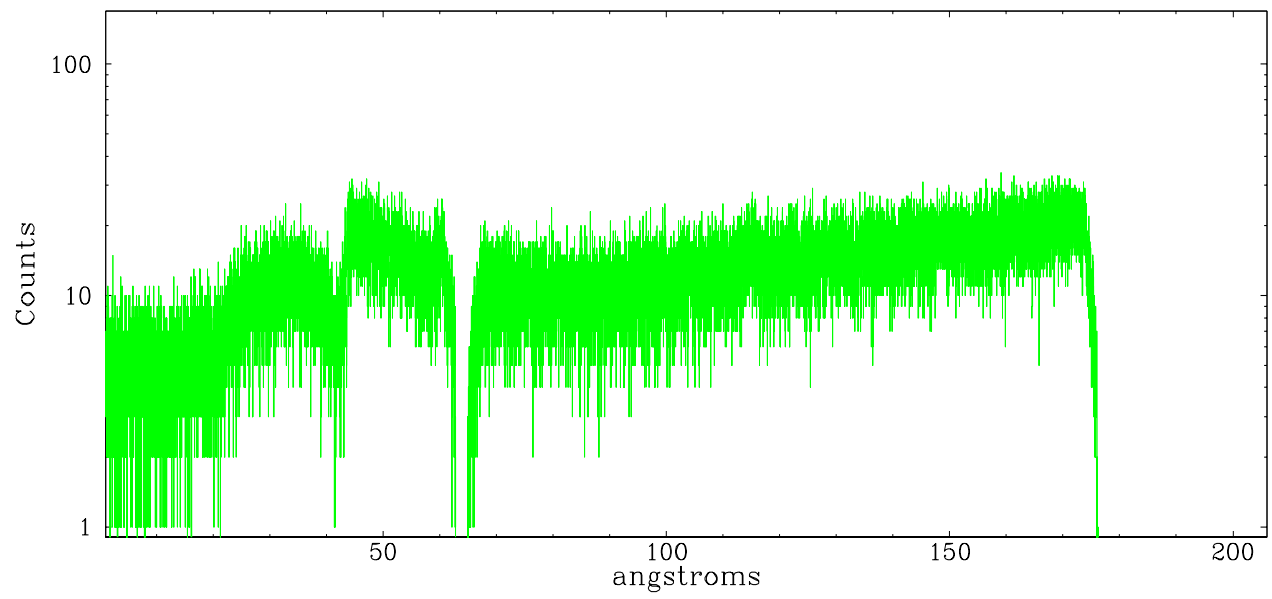


LETG Zero Order

leg order -1



leg order +1



A Summary

A.1 Status

V&V Scientist	Joy Nichols
V&V Date (YYYY-MM-DD)	2007.05.15
V&V Edition	1
V&V Disposition and Status	OK
V&V Charge Time	167.446

A.2 Comments

The fid light in slot 2 was removed from the aspect solution due to poor data quality. The aspect solution is not expected to be degraded by removing one fid light from the solution.

High radiation environment during several intervals, including the first 10 ksec and last 20 ksec, of this observation caused an anomalously high count rate. The time periods involved can be easily seen in the DTF file.