

V&V Reference Report

L2 ASCDS Version : 7.6.9

Observation 1985 - L2 Version 001
Chandra X-Ray Center

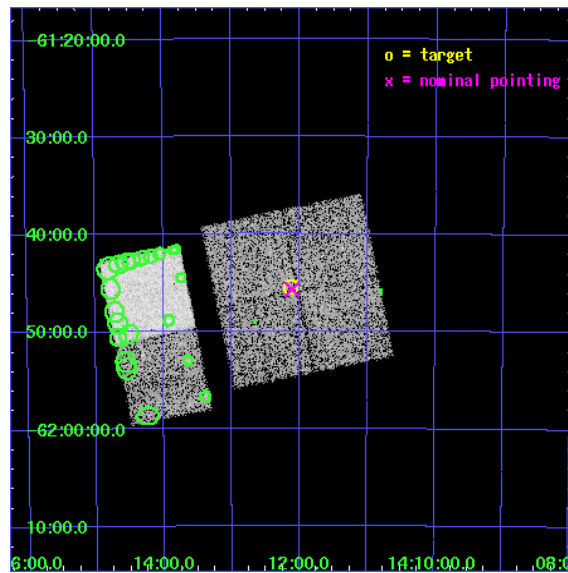
L2 Processing Date : Dec 15 2006

Contents

1	Front	2
2	OBI	3
2.1	OBI	3
2.1.1	Images	3
2.1.2	Bias	3
2.1.3	Parameters	4
2.1.4	Events	4
2.2	Compared Parameters	5
2.3	Aspect	6
2.4	Star Slots	9
2.4.1	Slot 3	9
2.4.2	Slot 4	10
2.4.3	Slot 5	11
2.4.4	Slot 6	12
2.4.5	Slot 7	13
2.5	FID Slots	14
2.5.1	Slot 0	14
2.5.2	Slot 1	15
2.5.3	Slot 2	16
3	Point Sources	17
A	Summary	18
A.1	Status	18
A.2	Comments	18

1 Front

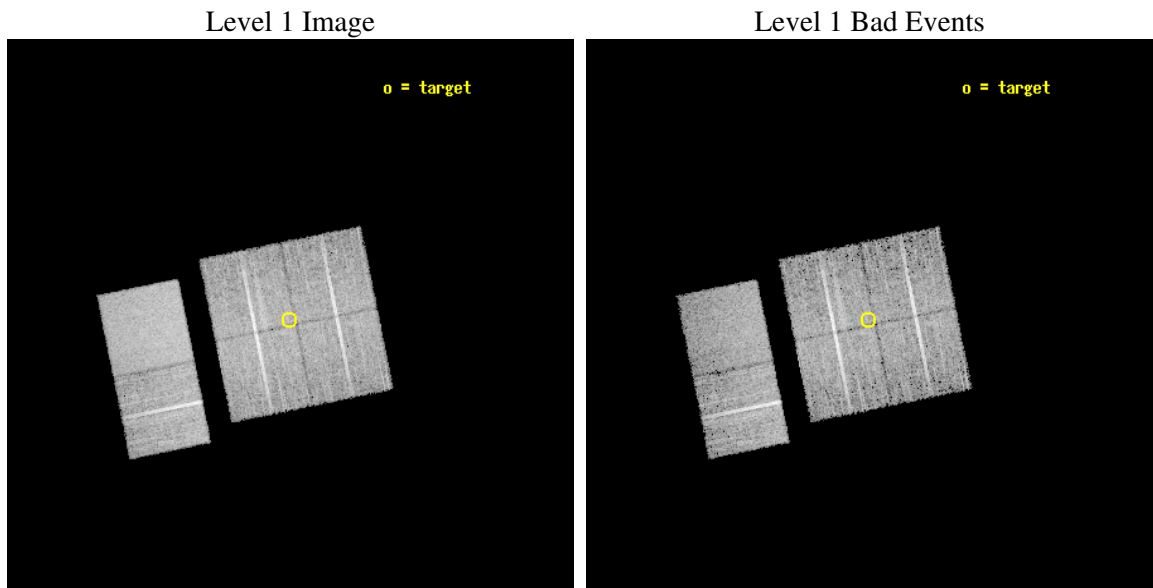
seq_num	500162
obs_id	1985
title	ACIS IMAGING OF SNR/GAMMA-RAY/YOUNG PULSAR ASSOCIATIONS
observer	Prof. Roger Romani
object	G312.4-0.4
dtcycle	0
cycle	P
ra_targ	213.033333
dec_targ	-61.758056
ra_nom	213.02762375651
dec_nom	-61.761892020419
roll_nom	258.49642346211
revision	2
ontime	9439.8770483136
livetime	9320.3436411163
ontime0	9439.8770483136
ontime1	9439.8770483136
ontime2	9439.8770483136
ontime3	9439.8770483136
ontime6	9439.8770483136
ontime7	9439.8770682216
l2events	62023



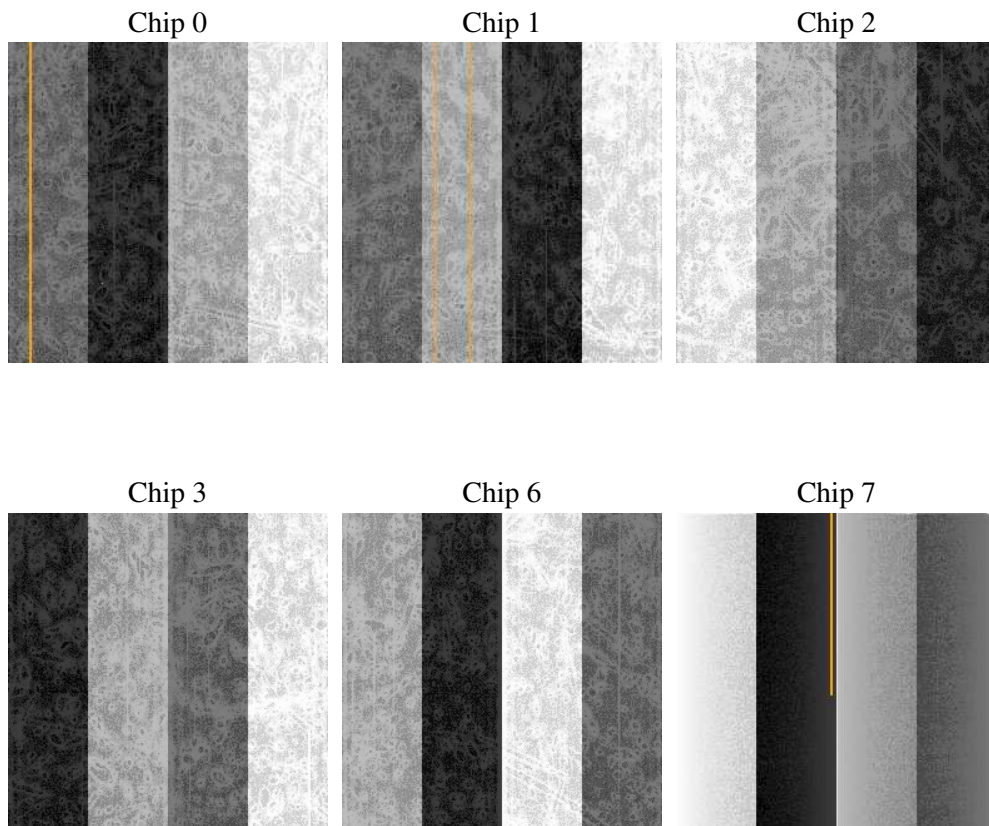
2 OBI

2.1 OBI

2.1.1 Images



2.1.2 Bias



2.1.3 Parameters

obi_num	1
ascdsver	7.6.9
caldbver	3.2.4
date	2006-12-15T18:26:57
revision	2

sched_exp_time	9500.000000
ontime	9444.2695110142
ontime0	9444.2695110142
ontime1	9444.2695409358
ontime2	9444.2695110142
ontime3	9444.2695110142
ontime6	9444.2695409358
ontime7	9444.2695608437
l1events	382249

2.1.4 Events

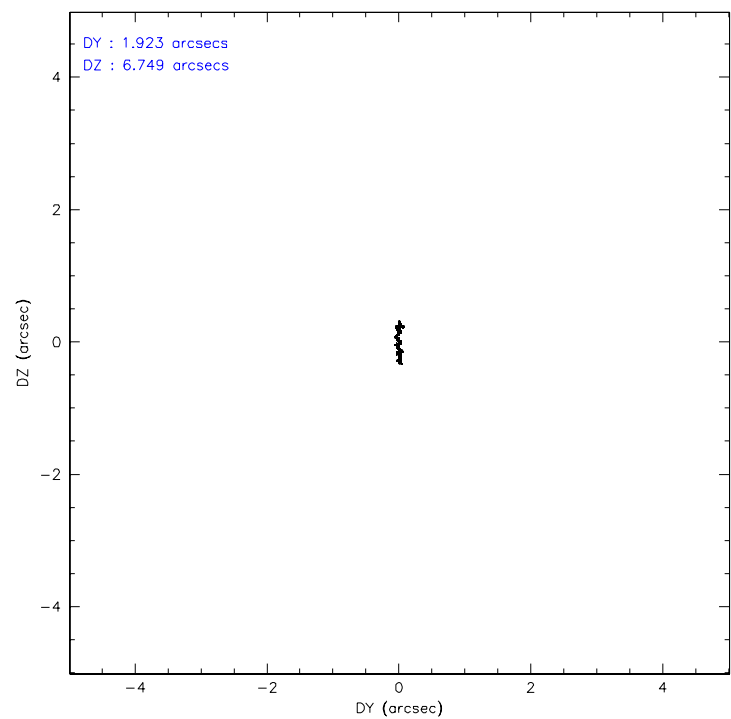
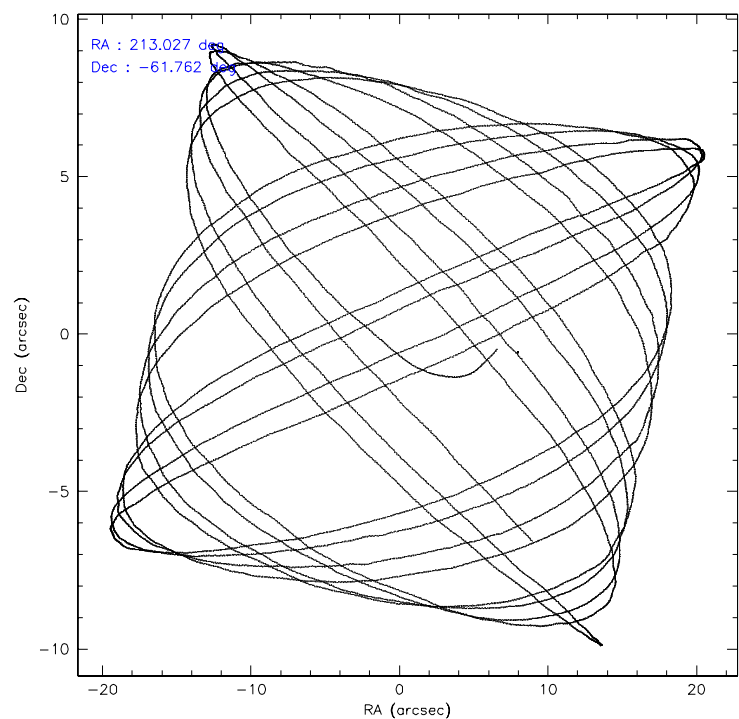
	ccd 0	ccd 1	ccd 2	ccd 3	ccd 6	ccd 7
level 1 events	57275	56111	62590	61842	65657	78774
rejected events	49469	48329	55438	54538	58104	48186
rejected %	86%	86%	88%	88%	88%	61%

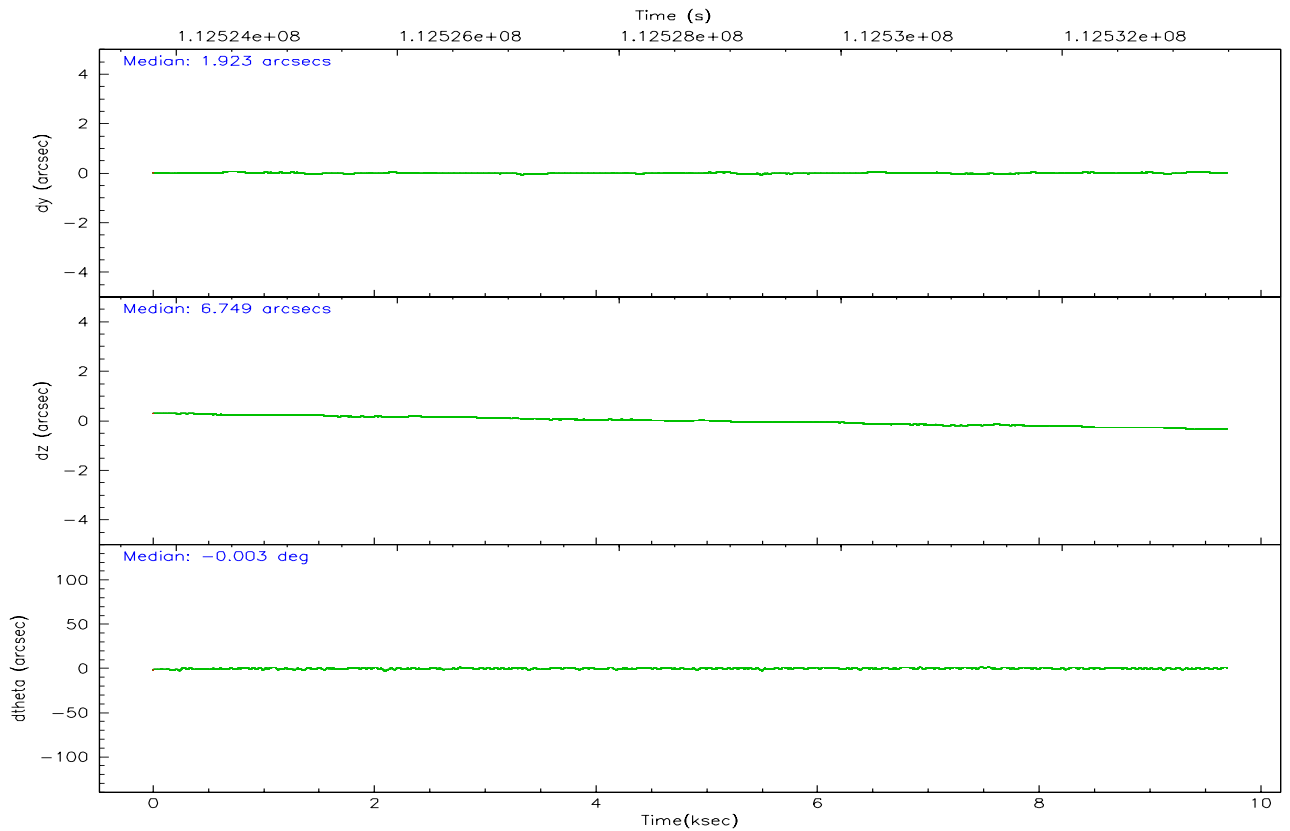
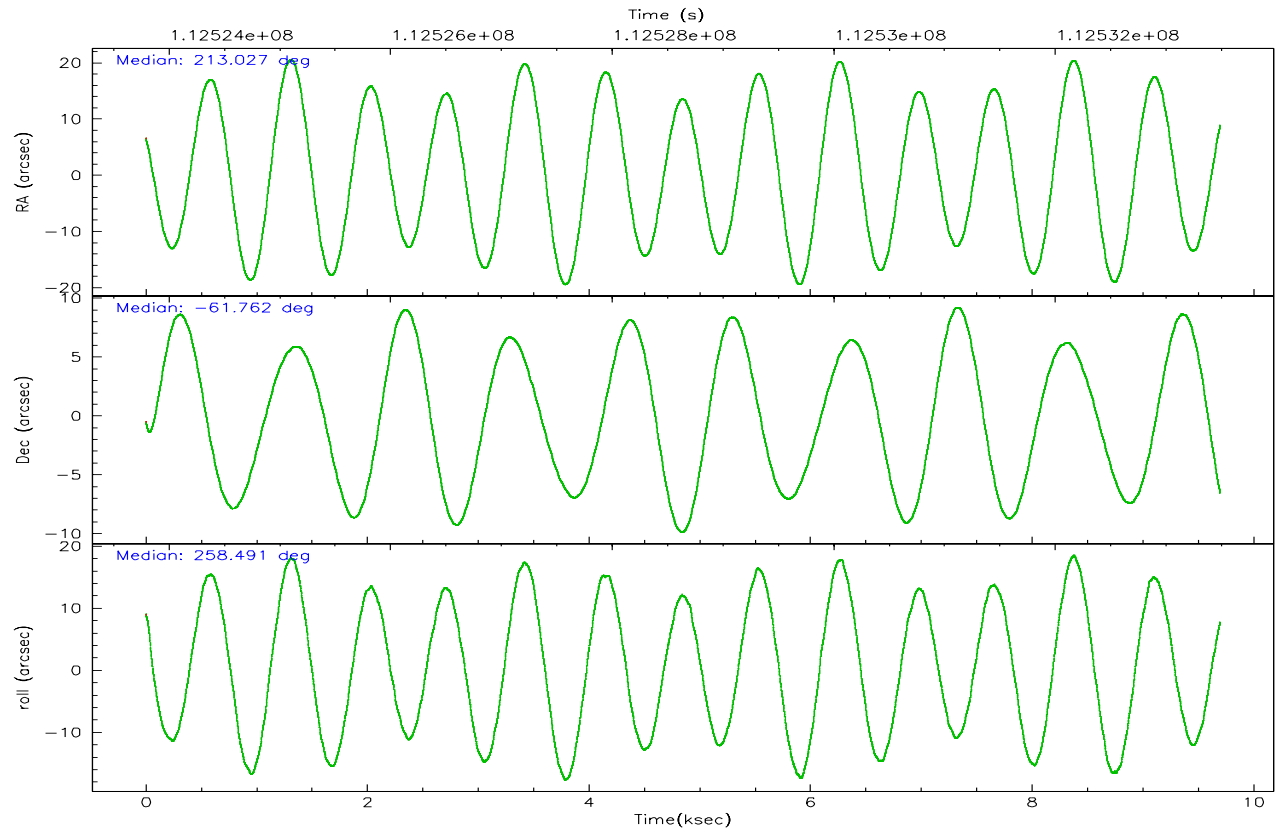
	ccd 0	ccd 1	ccd 2	ccd 3	ccd 6	ccd 7
grade 0 events	3405	3320	3154	3267	3211	1845
	5%	5%	5%	5%	4%	2%
grade 1 events	33	30	27	32	30	43
	0%	0%	0%	0%	0%	0%
grade 2 events	1619	1513	1486	1394	1429	7545
	2%	2%	2%	2%	2%	9%
grade 3 events	777	801	671	700	730	1615
	1%	1%	1%	1%	1%	2%
grade 4 events	671	719	669	641	707	1543
	1%	1%	1%	1%	1%	1%
grade 5 events	2299	2359	2083	2417	2691	5389
	4%	4%	3%	3%	4%	6%
grade 6 events	1341	1434	1176	1305	1481	18055
	2%	2%	1%	2%	2%	22%
grade 7 events	47130	45935	53324	52086	55378	42739
	82%	81%	85%	84%	84%	54%

2.2 Compared Parameters

Parameter	Planned	Actual	Parameter	Planned	Actual
Instrument	ACIS	ACIS	Obspar format version number	6	6
Detector	ACIS-012367	ACIS-012367	Obspar file type	PREDICTED	ACTUAL
Grating	NONE	NONE	Obspar update status	NONE	UPDATED
Data mode	FAINT	FAINT	Number of optional ACIS chips dropped	0	0
Observation mode	POINTING	POINTING	On-chip summing requested	N	N
Pointing RA	213.009205	213.0276237565119	Subarray requested	NONE	NONE
Pointing Dec	-61.735944	-61.76189202041938	Alternating exposures requested	N	N
Pointing Roll	258.271505	258.4964234621083	Primary exposure time	0.000000	3.2
SIM focus pos (mm)	-0.782348	-0.7809083437167272			
SIM defocus (mm)	0	0.001439871863259334			
SIM translation stage pos (mm)	-233.592463	-233.5874344608287			
SIM translation stage offset (mm)	0	-0.005018542100998502			
Observation start time	112523991.184000	112523022.32987			
Observation start date	2001-07-26T08:38:47	2001-07-26T08:23:42			
Observation end time	112533491.184000	112534409.05532			
Observation end date	2001-07-26T11:17:07	2001-07-26T11:33:29			
Read mode	TIMED	TIMED			

2.3 Aspect



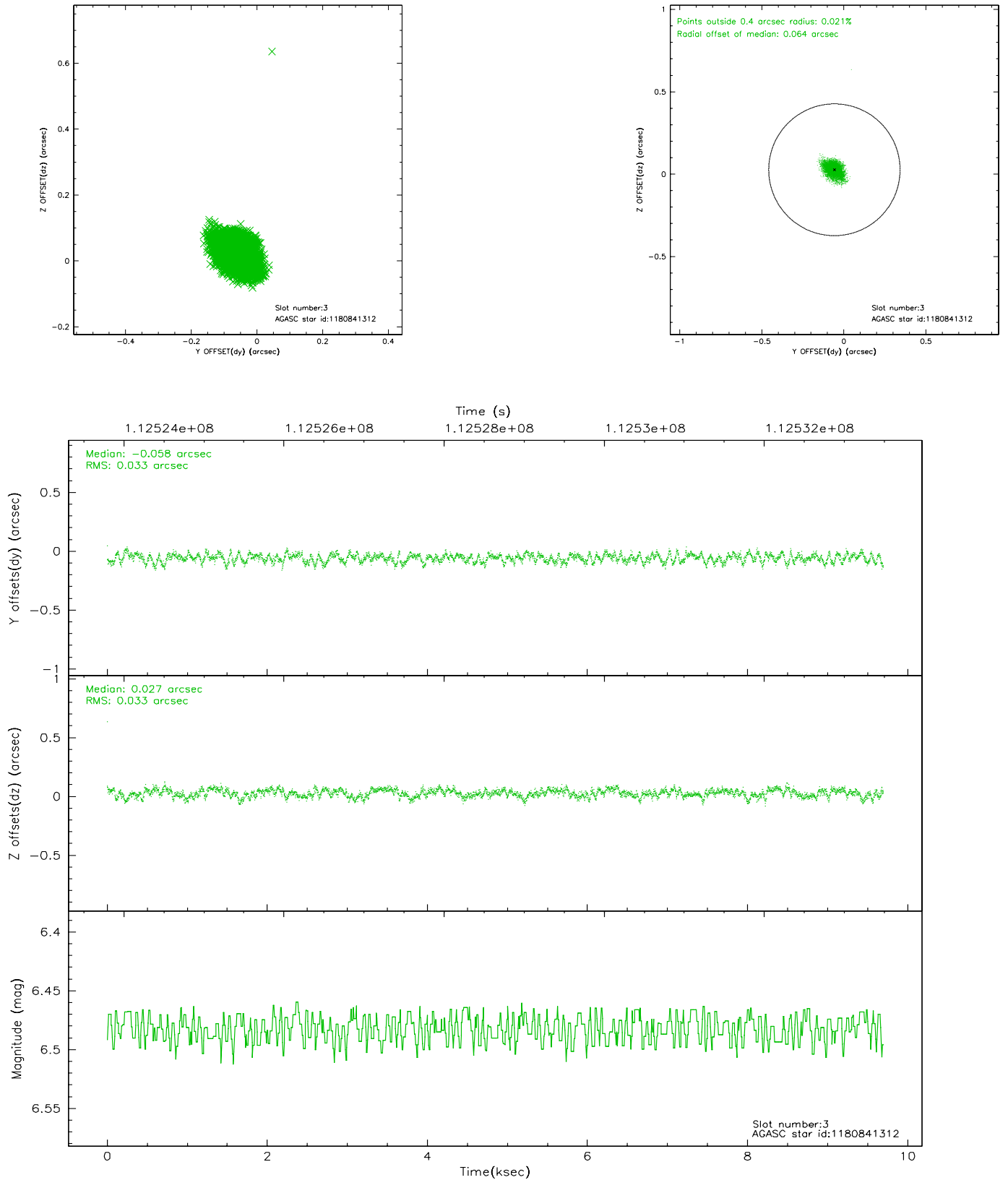


Slot Statistics

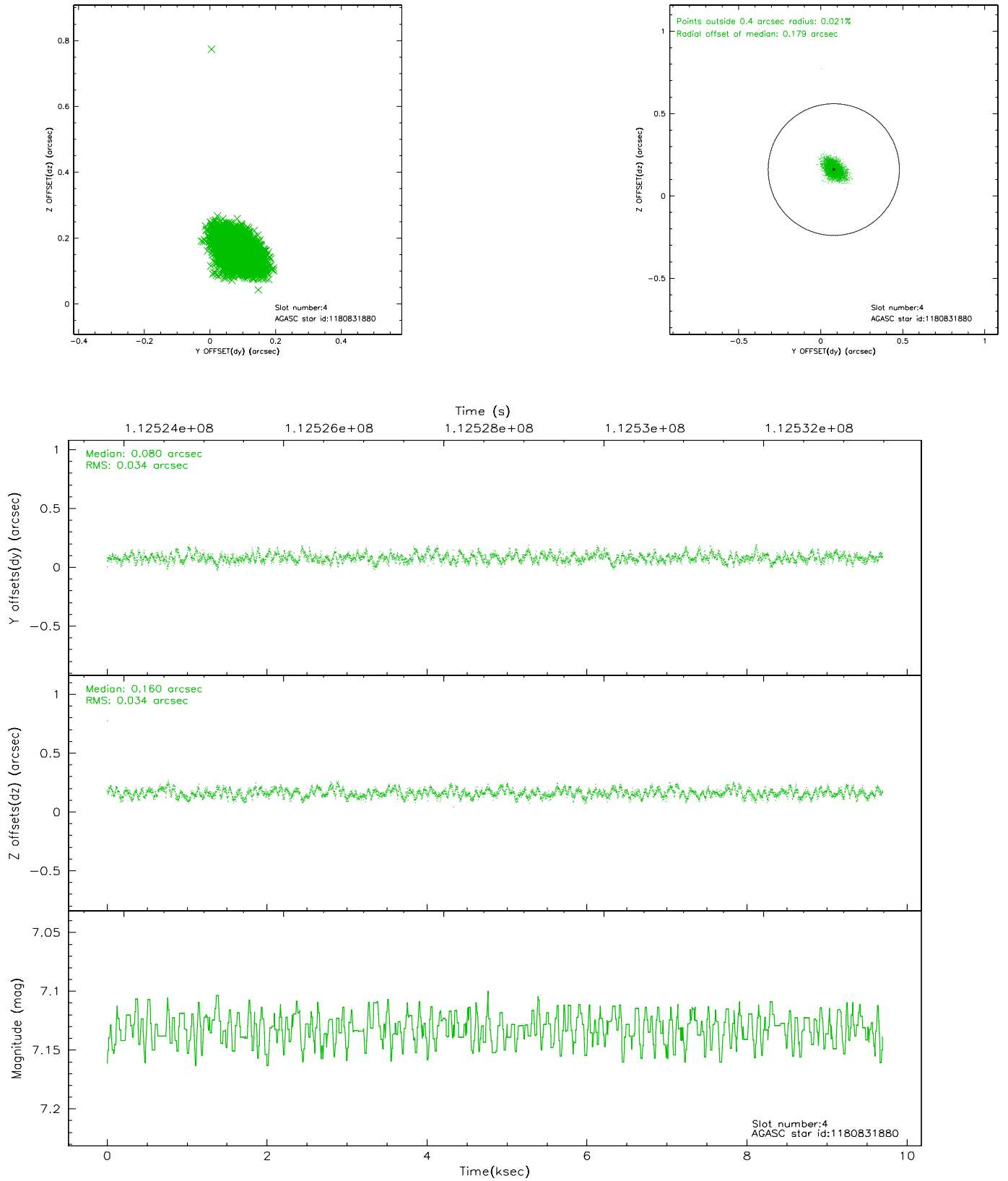
slot	status	id	mag	n_pts	med_dy	med_dz	dr1	dr2	ra	dec	mean_y	mean_z
0	FID	ACIS-I-2	7.15	2361	-0.034	-0.053	0.009	0.015	0.000000	0.000000	-756.30	-836.55
1	FID	ACIS-I-4	7.18	2363	-0.058	0.042	0.005	0.009	0.000000	0.000000	2157.47	1069.46
2	FID	ACIS-I-5	7.23	2363	-0.009	0.080	0.009	0.014	0.000000	0.000000	-1809.41	1067.94
3	GUIDE	1180841312	6.48	4727	-0.058	0.027	0.049	0.080	211.462952	-61.933078	1258.51	-2412.79
4	GUIDE	1180831880	7.13	4727	0.080	0.160	0.050	0.083	213.988497	-62.488762	2335.38	2148.43
5	GUIDE	1180306208	7.90	4726	-0.195	0.047	0.077	0.121	214.195555	-61.184167	-2344.31	1616.51
6	GUIDE	1180829496	8.14	4727	0.164	-0.202	0.058	0.093	212.949969	-62.026347	1044.26	115.47
7	GUIDE	1180834480	8.05	4726	0.011	-0.032	0.051	0.080	213.510180	-62.231695	1580.56	1186.96

2.4 Star Slots

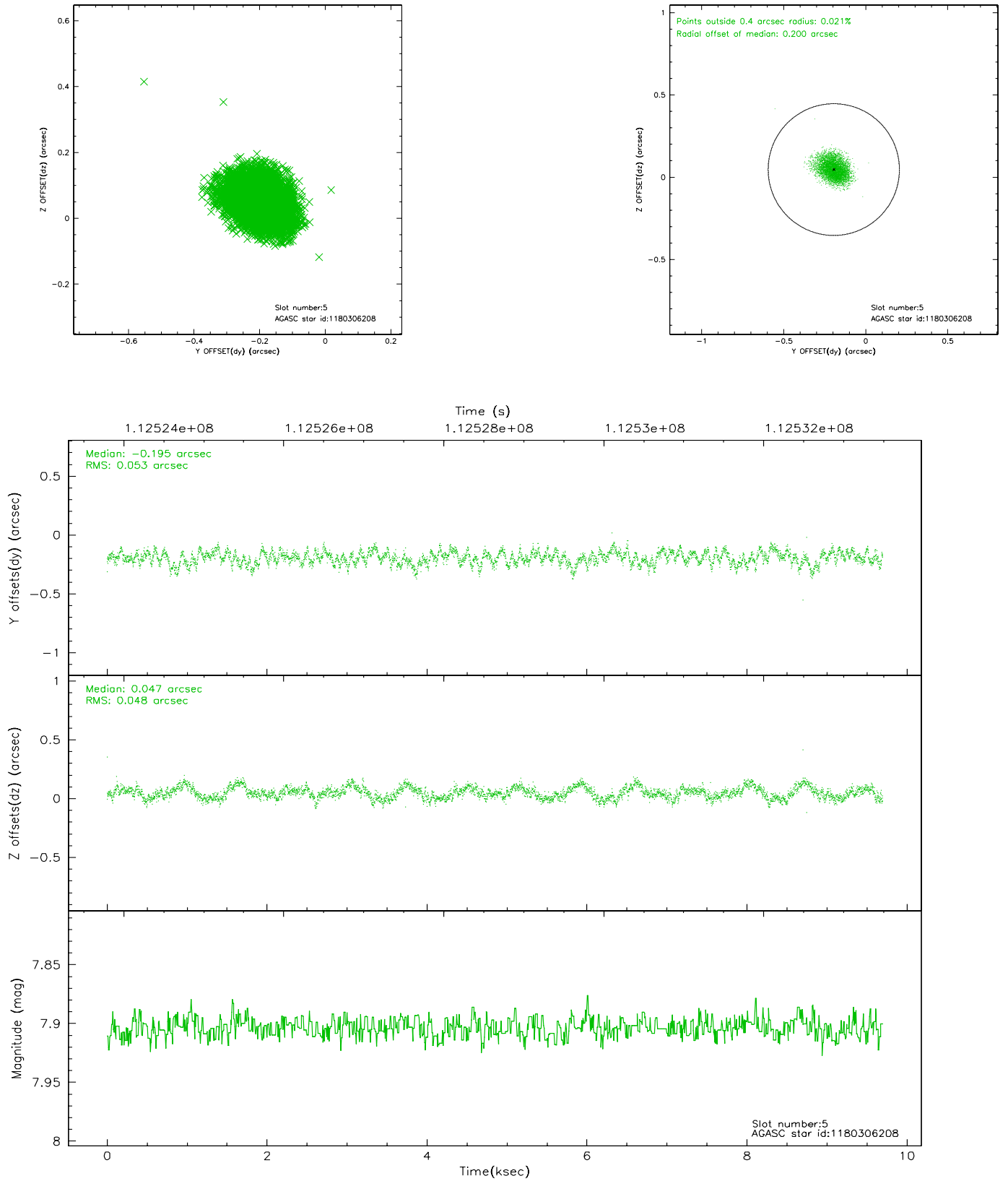
2.4.1 Slot 3



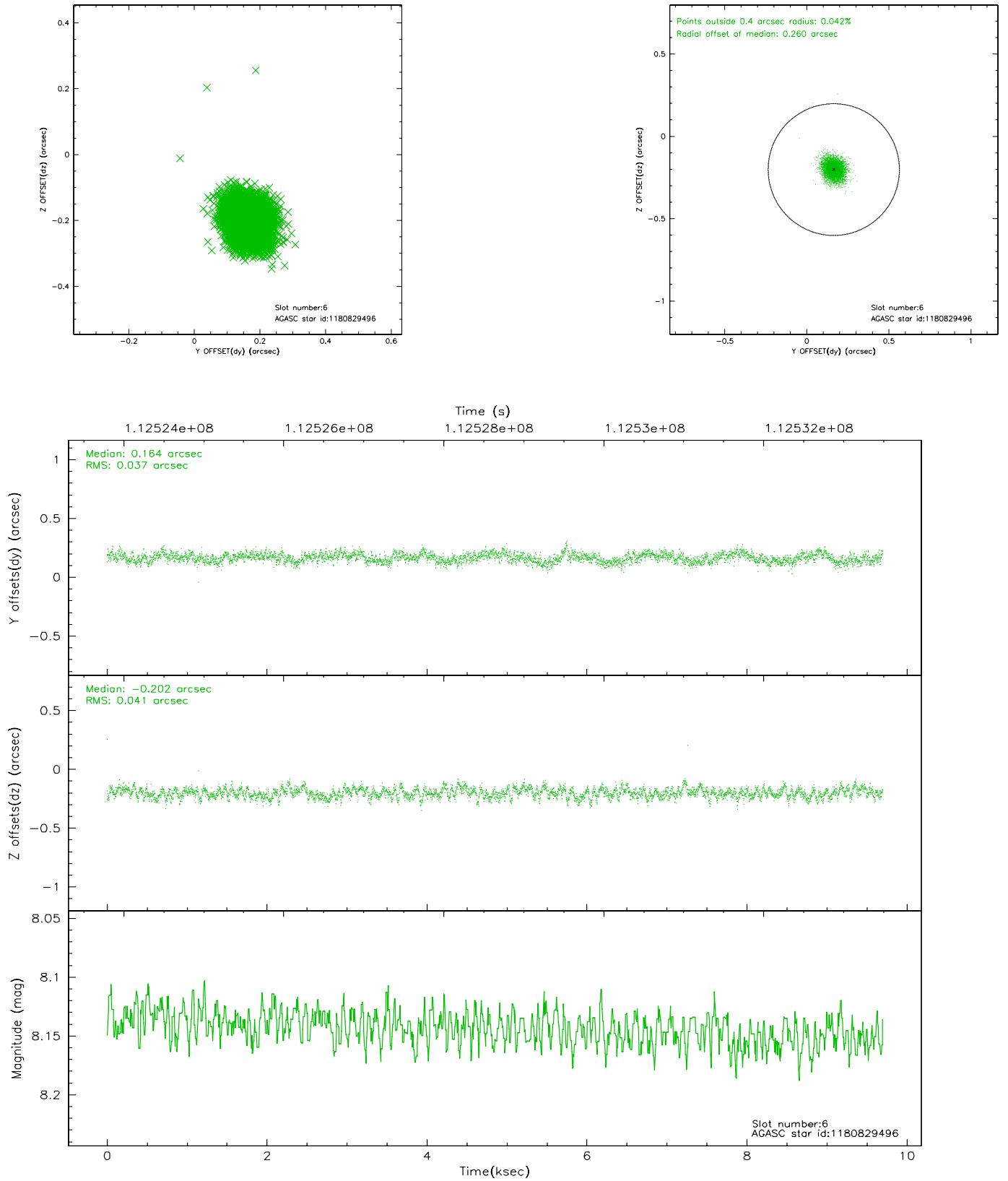
2.4.2 Slot 4



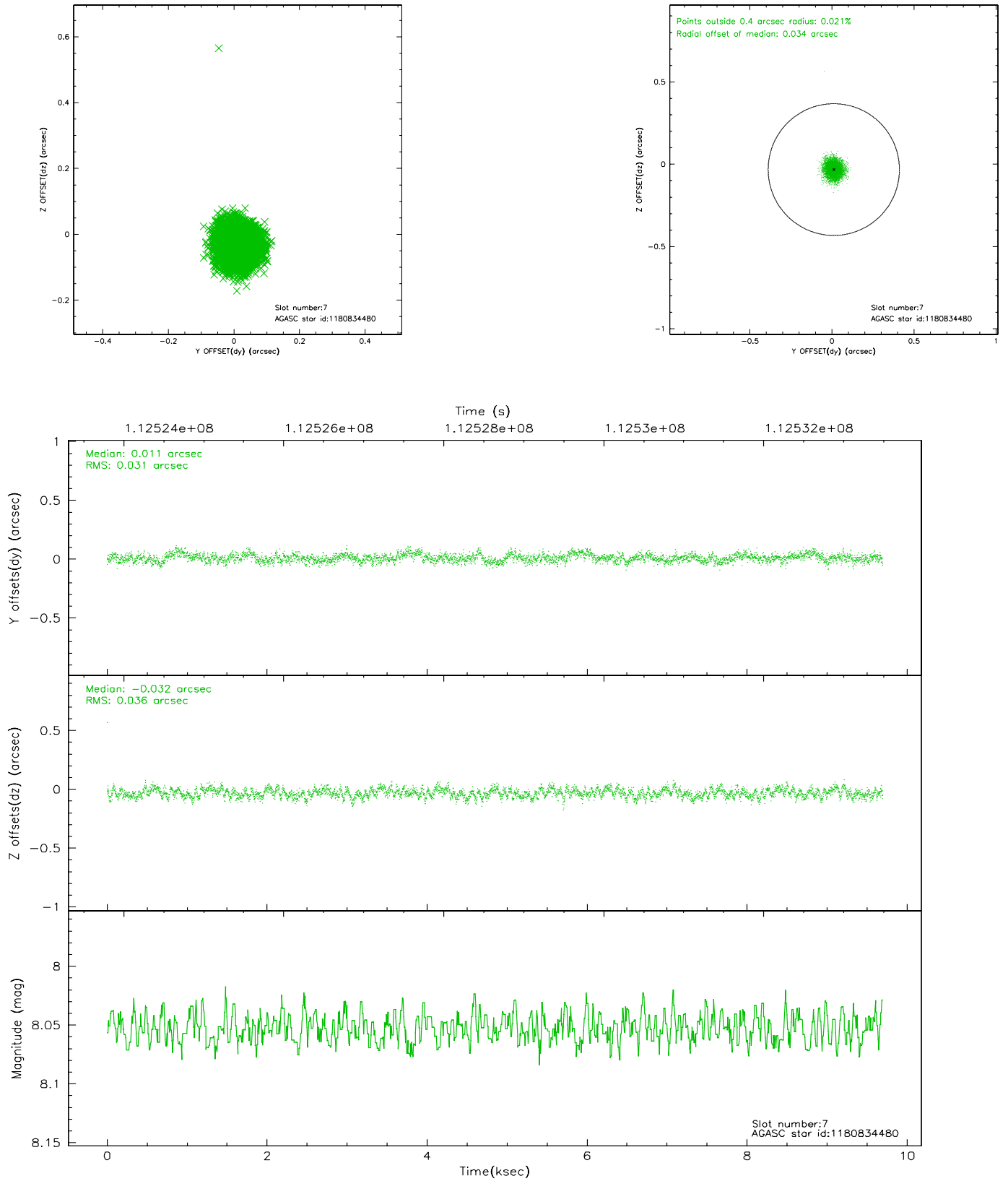
2.4.3 Slot 5



2.4.4 Slot 6

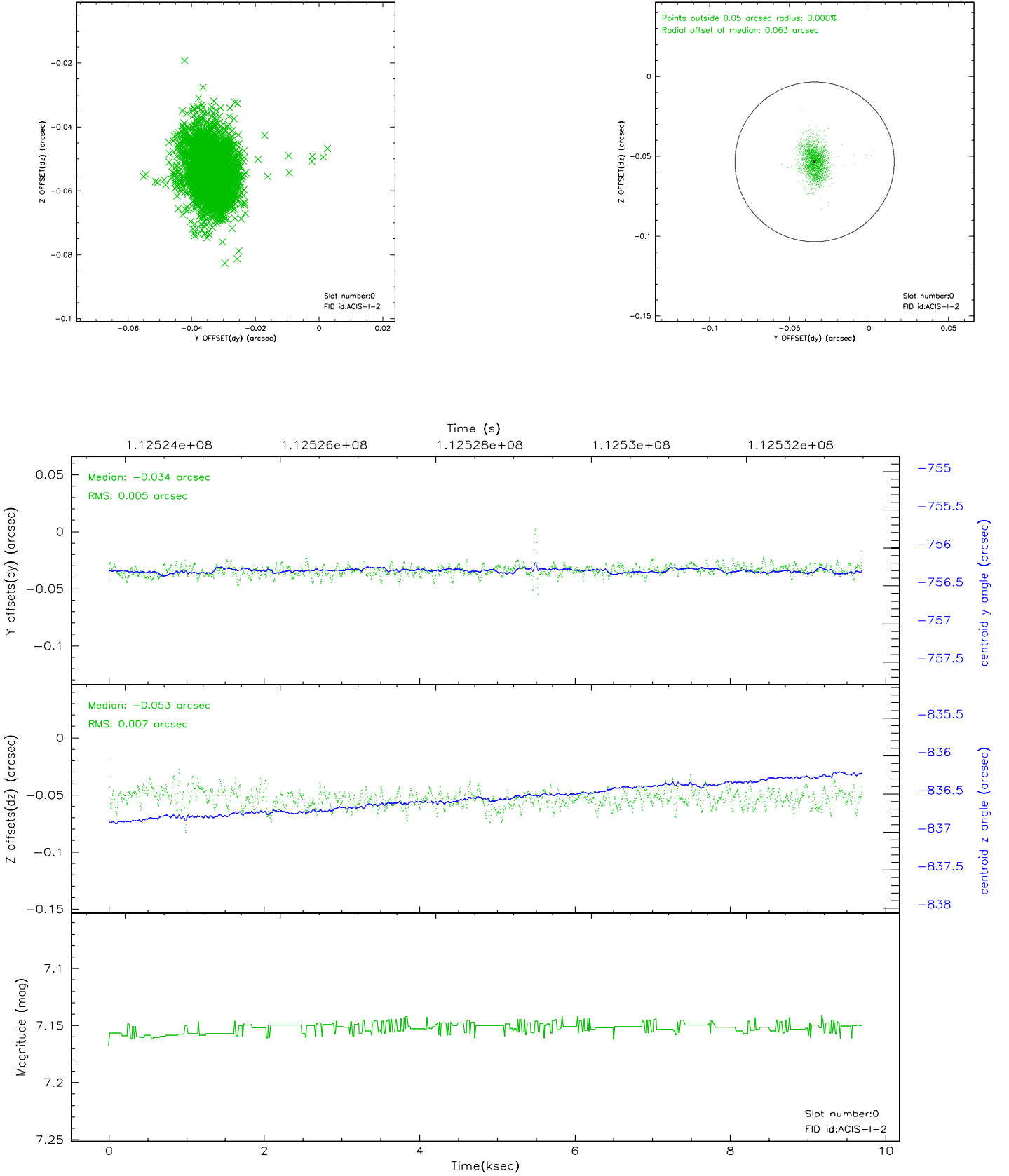


2.4.5 Slot 7

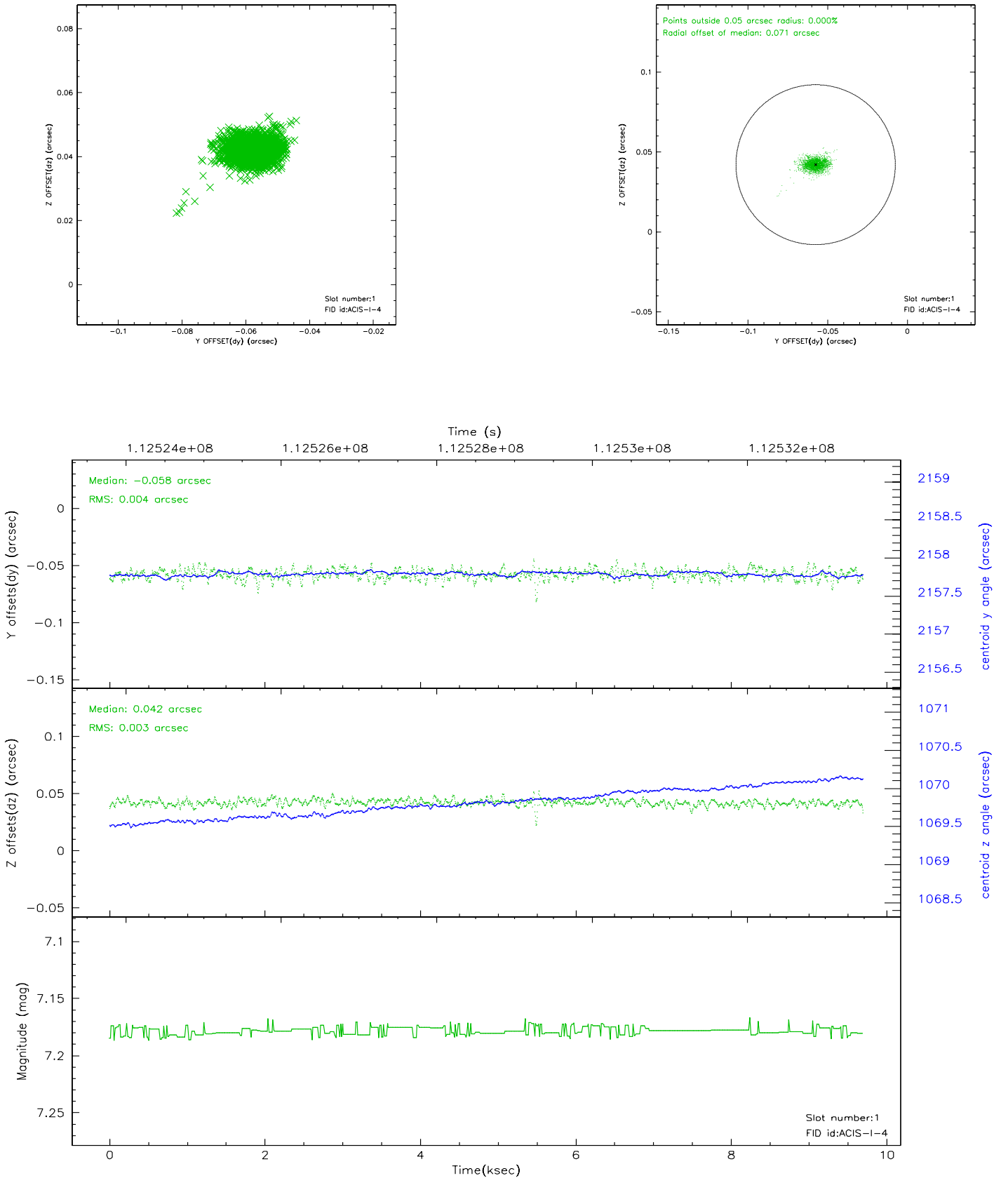


2.5 FID Slots

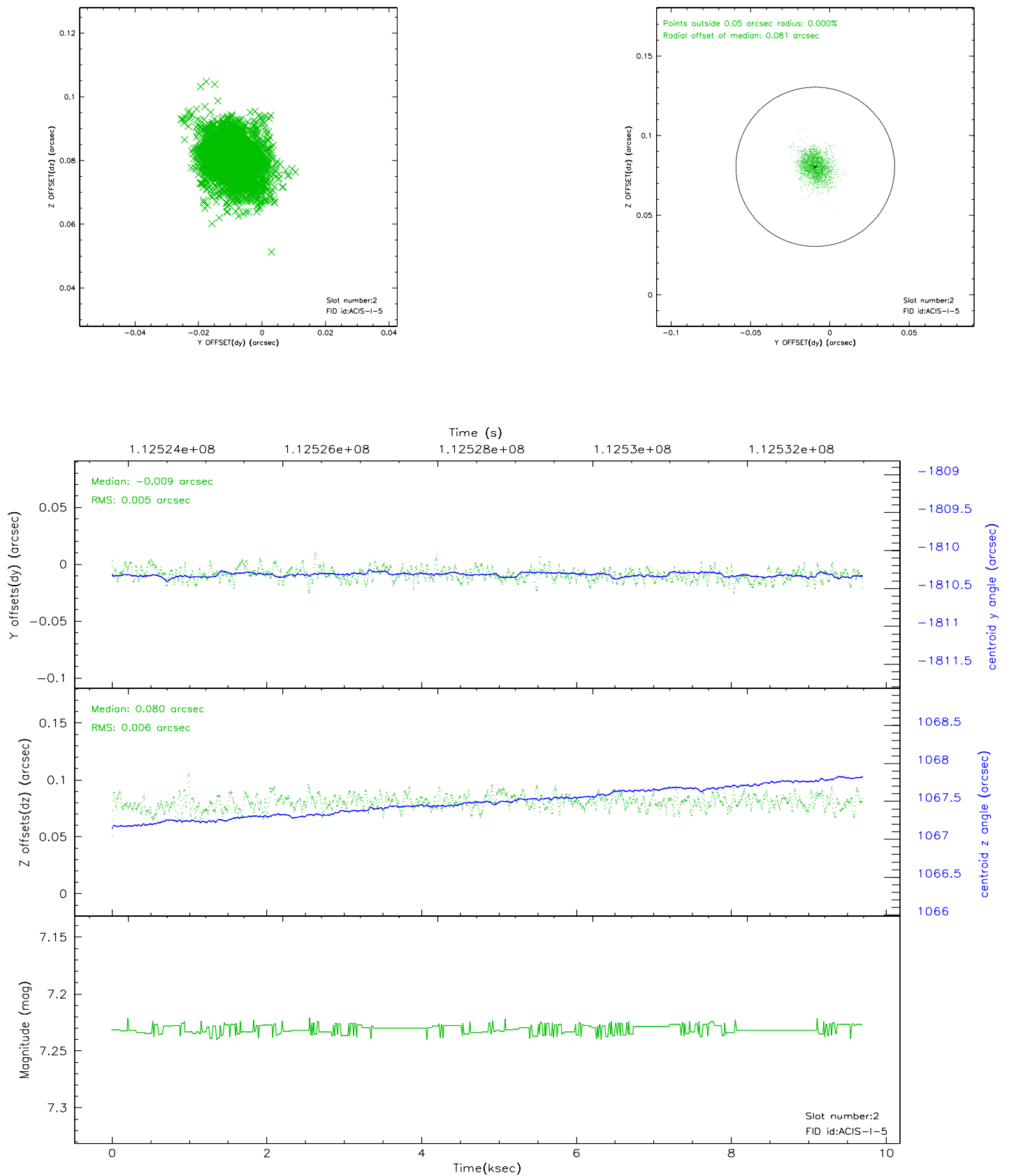
2.5.1 Slot 0



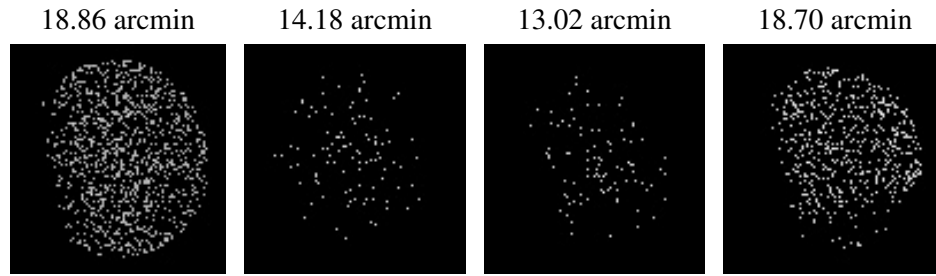
2.5.2 Slot 1



2.5.3 Slot 2



3 Point Sources



A Summary

A.1 Status

V&V Scientist	Beth Sundheim
V&V Date (YYYY-MM-DD)	2006.12.15
V&V Edition	1
V&V Disposition and Status	OK
V&V Charge Time	9.443

A.2 Comments