

V&V Reference Report

L2 ASCDS Version : 7.6.10

Observation 1963 - L2 Version 4
Chandra X-Ray Center

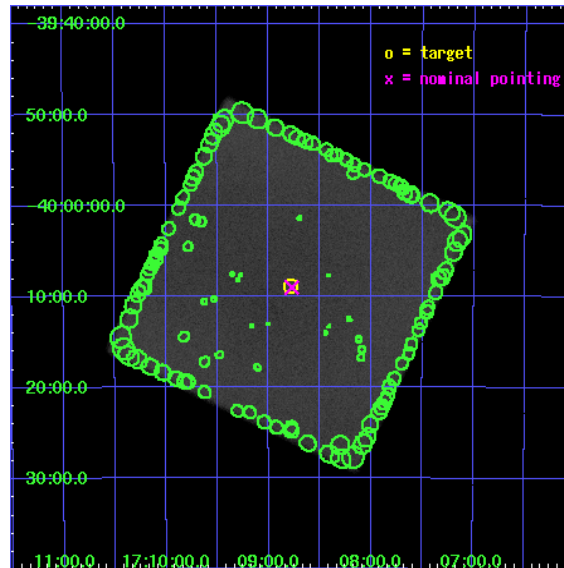
L2 Processing Date : Nov 20 2007

Contents

1	Front	2
2	OBI	3
2.1	OBI	3
2.1.1	Images	3
2.1.2	Parameters	4
2.1.3	Events	4
2.2	Compared Parameters	5
2.3	Aspect	6
2.4	Star Slots	9
2.4.1	Slot 3	9
2.4.2	Slot 4	10
2.4.3	Slot 5	11
2.4.4	Slot 6	12
2.4.5	Slot 7	13
2.5	FID Slots	14
2.5.1	Slot 0	14
2.5.2	Slot 1	15
2.5.3	Slot 2	16
3	Point Sources	17
A	Summary	18
A.1	Status	18
A.2	Comments	18

1 Front

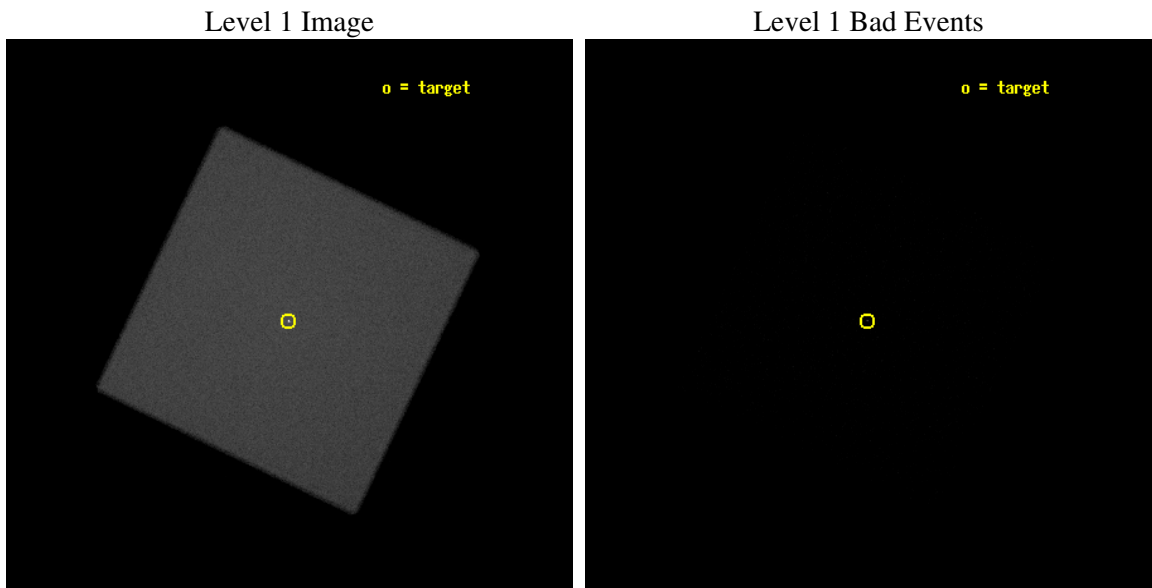
seq_num	500140
obs_id	1963
title	CHANDRA DETAILED SPATIAL STUDY OF THE ``ANOMALOUS" X--RAY PULSARS
observer	Dr. GianLuca Israel
object	1RXS J1708-4009
ra_targ	257.196667
dec_targ	-40.147417
ra_nom	257.19309951361
dec_nom	-40.15043109157
roll_nom	250.61350367883
revision	4
ontime	9870.7503920346
livetime	9519.7961922001
l2events	1239394



2 OBI

2.1 OBI

2.1.1 Images



2.1.2 Parameters

obi_num	2
ascdsver	7.6.11.2
caldbver	3.4.1
date	2007-11-20T19:23:37
revision	4

sched_exp_time	10000.000000
ontime	9870.7503920346
l1events	1724809

2.1.3 Events

Level 1 Events

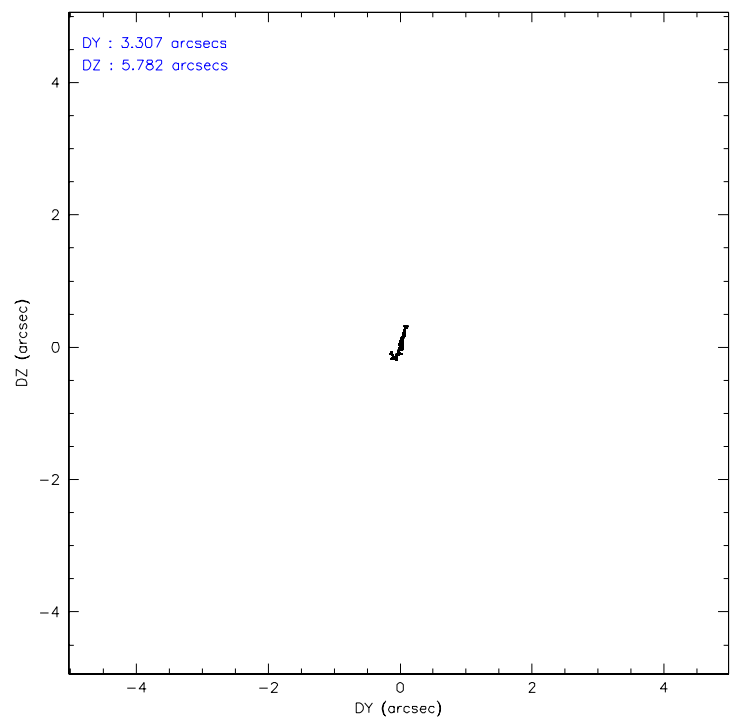
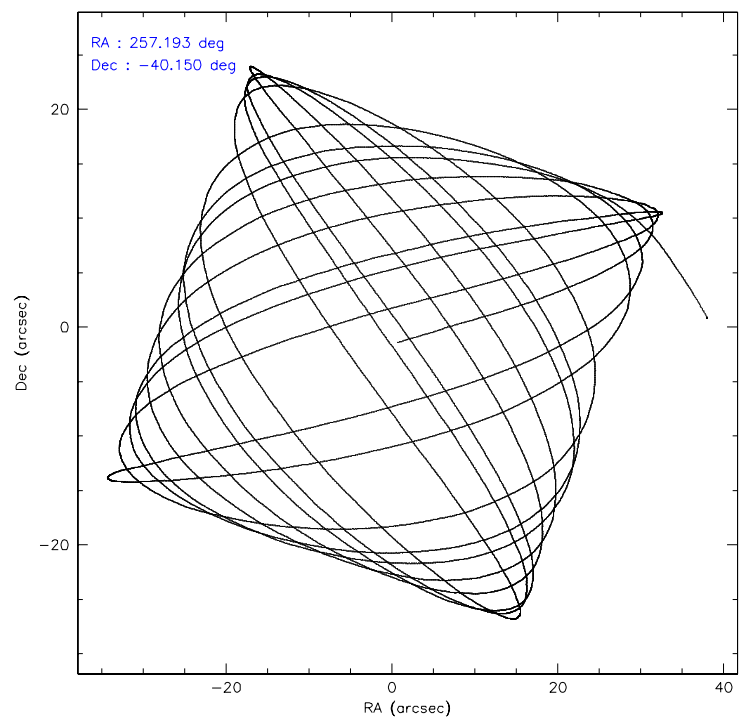
	segment 0
level 1 events	1724809
rejected events	15927
rejected %	0%

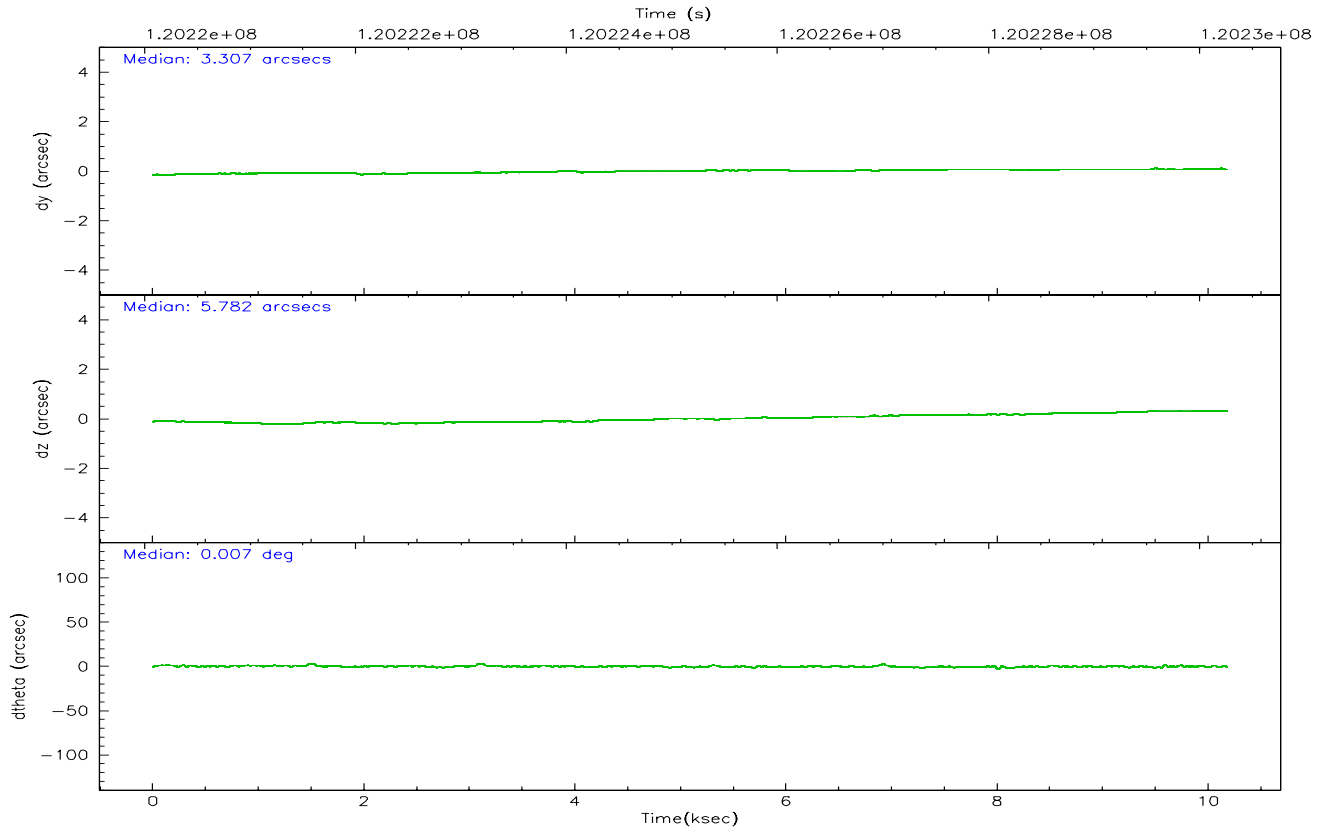
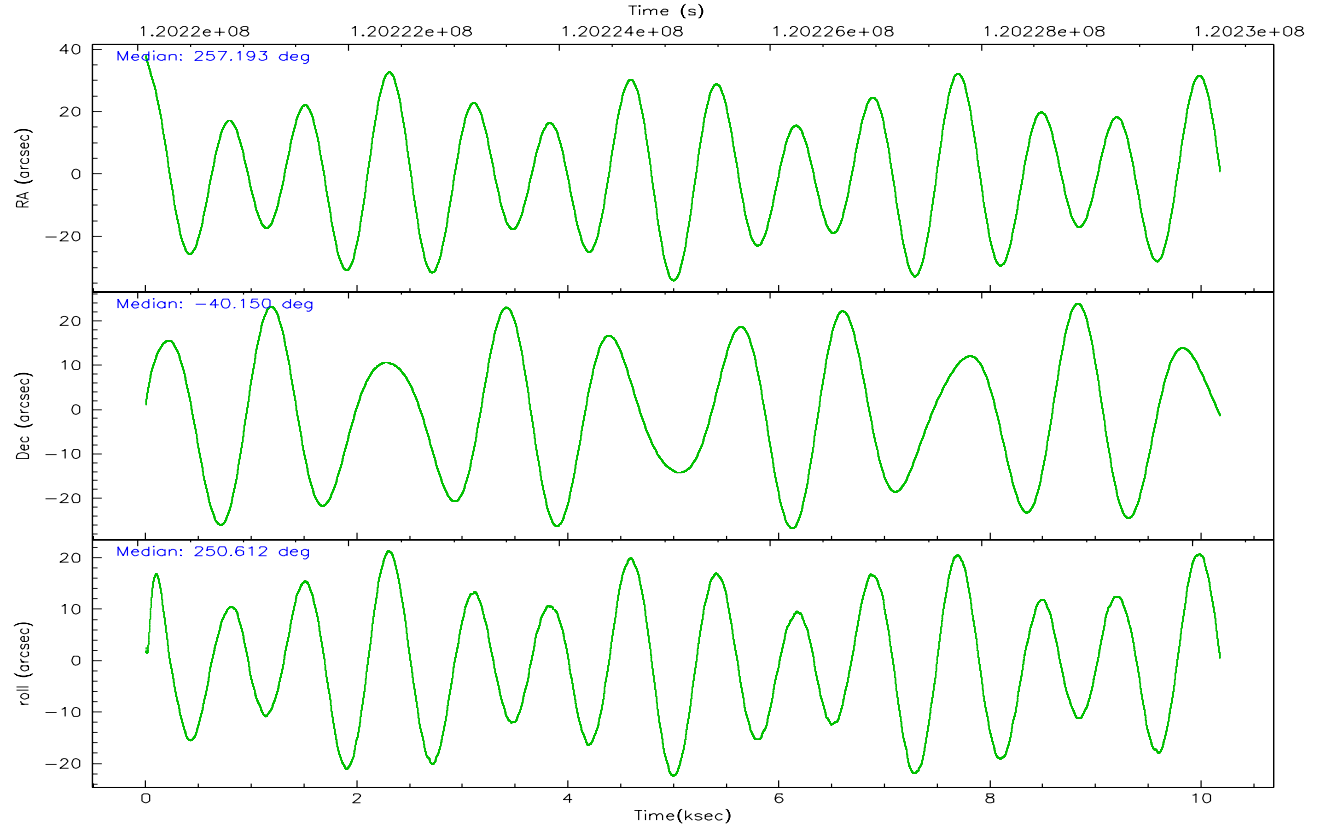
2.2 Compared Parameters

Parameter	Planned	Actual
Instrument	HRC	HRC
Detector	HRC-I	HRC-I
Grating	NONE	NONE
Data mode	OBSERVING	OBSERVING
Observation mode	POINTING	POINTING
Pointing RA	257.185684	257.1930995136071
Pointing Dec	-40.123988	-40.15043109156958
Pointing Roll	250.704246	250.6135036788301
SIM focus pos (mm)	-1.040293	-1.038866356238299
SIM defocus (mm)	0	0.001426264420575141
SIM translation stage pos (mm)	126.985494	126.9854943052878
SIM translation stage offset (mm)	0	-5.413686238853188e-06
Observation start time	120220263.184000	120219387.3466
Observation start date	2001-10-23T10:29:59	2001-10-23T10:16:27
Observation end time	120230263.184000	120230968.30956
Observation end date	2001-10-23T13:16:39	2001-10-23T13:29:28

Parameter	Planned	Actual
Obspar format version number	6	6
Obspar file type	PREDICTED	ACTUAL
Obspar update status	NONE	UPDATED

2.3 Aspect



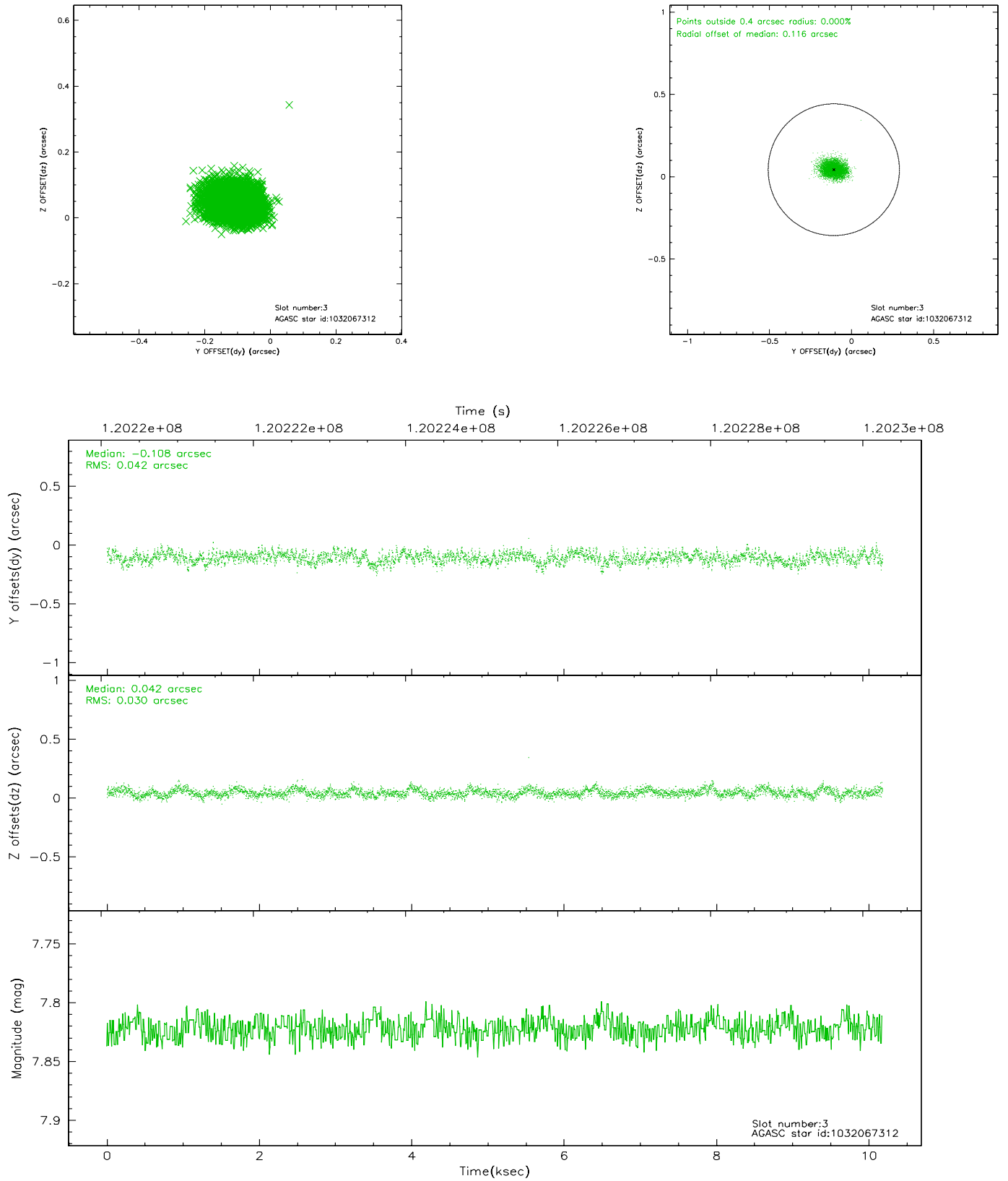


Slot Statistics

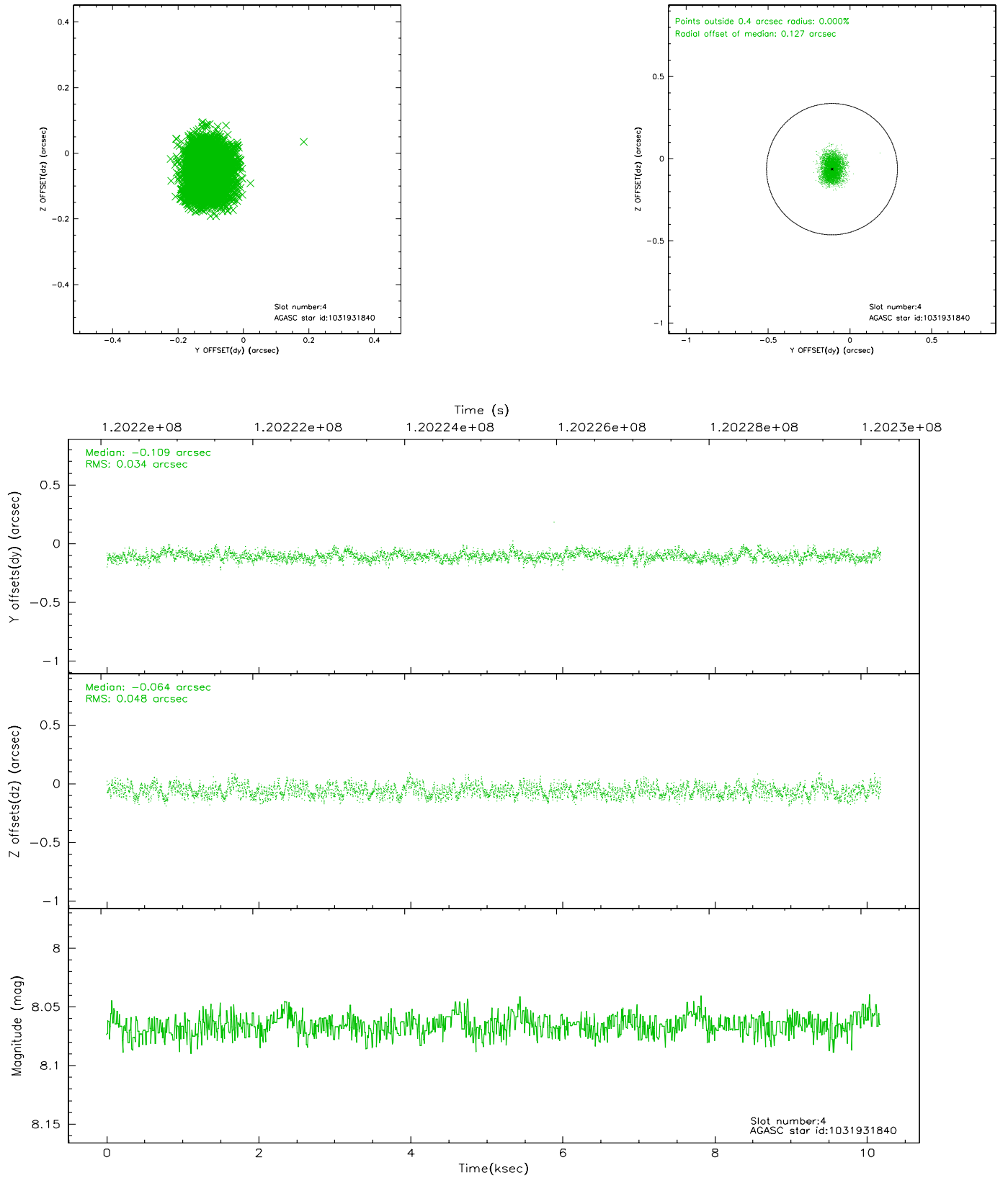
slot	status	id	mag	n_pts	med_dy	med_dz	dr1	dr2	ra	dec	mean_y	mean_z
0	FID	HRC-I-1	6.94	2483	0.018	0.040	0.010	0.037	0.000000	0.000000	-758.73	-1293.64
1	FID	HRC-I-2	6.99	2483	0.044	-0.026	0.009	0.019	0.000000	0.000000	853.62	-1295.76
2	FID	HRC-I-3	7.03	2483	0.057	-0.102	0.011	0.027	0.000000	0.000000	-1186.89	1010.25
3	GUIDE	1032067312	7.82	4966	-0.108	0.042	0.055	0.089	258.048957	-39.760316	-2015.16	1825.76
4	GUIDE	1031931840	8.07	4966	-0.109	-0.064	0.063	0.100	256.966064	-39.446694	-2100.06	-1381.82
5	GUIDE	1031932624	8.31	4967	0.002	0.014	0.060	0.098	257.431727	-40.221910	108.97	754.57
6	GUIDE	1031929904	9.41	4964	0.143	-0.036	0.101	0.164	256.776341	-40.685313	2278.40	-386.22
7	GUIDE	1032061480	9.54	4962	0.074	0.043	0.106	0.179	257.546142	-40.441464	754.11	1310.20

2.4 Star Slots

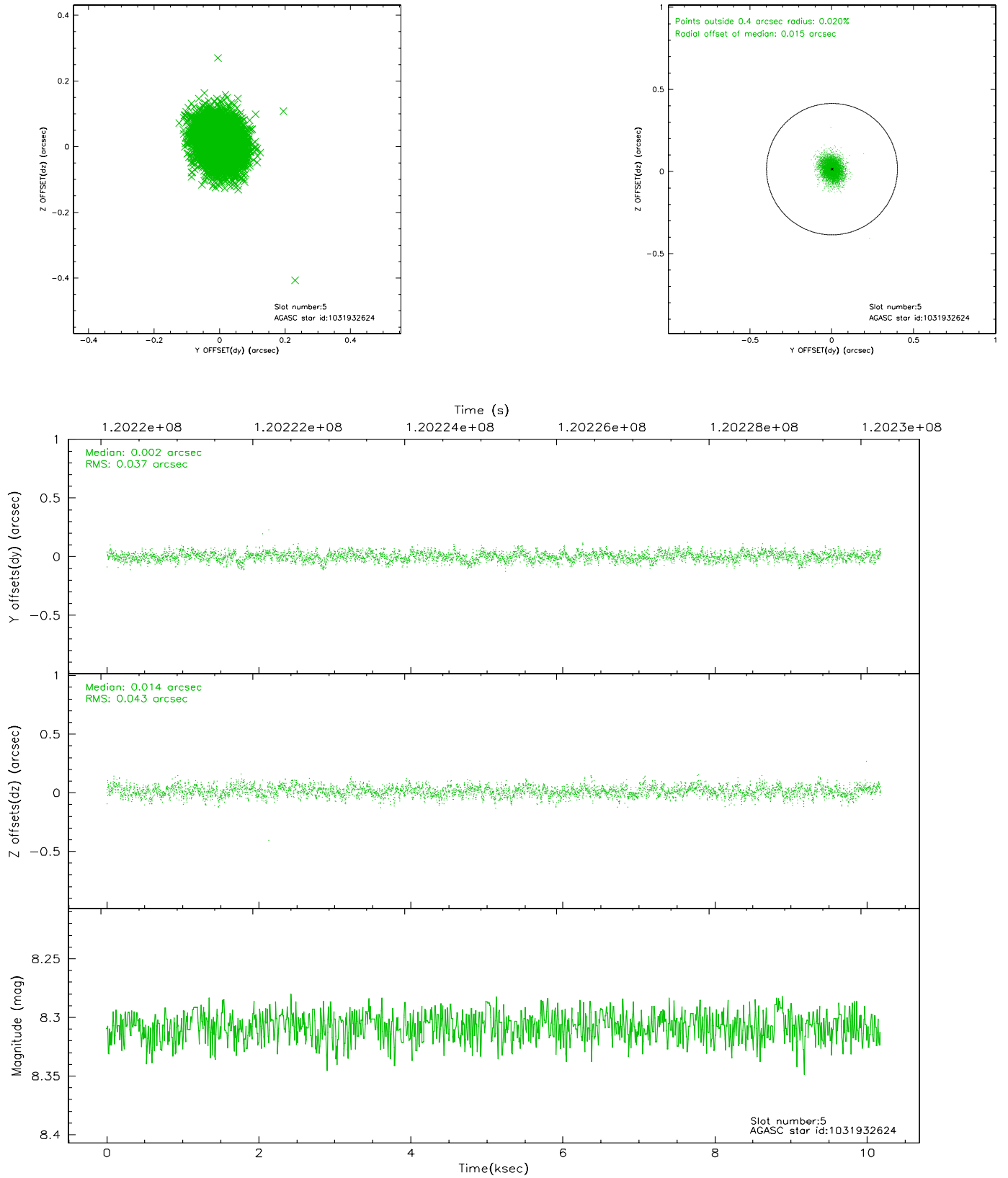
2.4.1 Slot 3



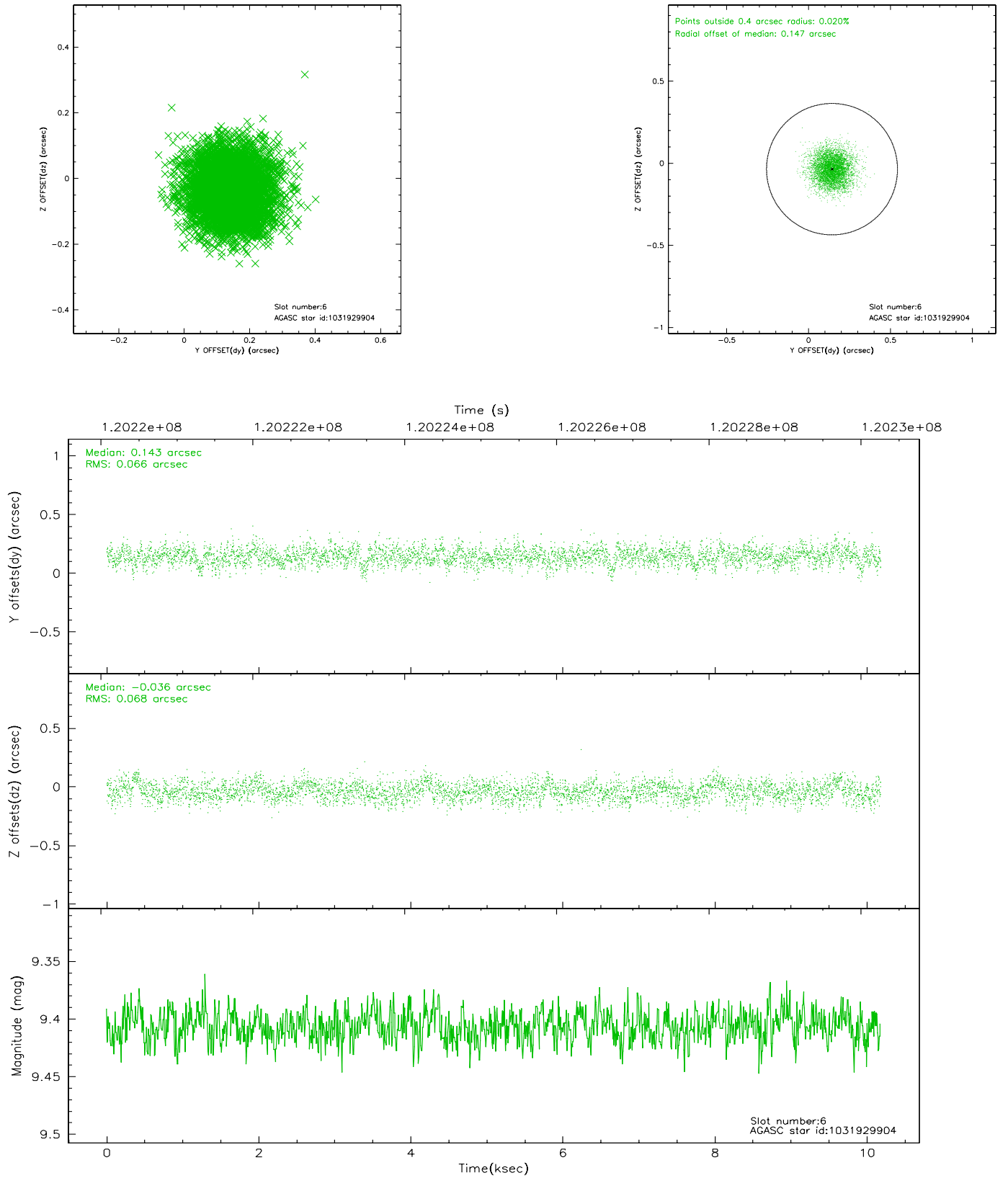
2.4.2 Slot 4



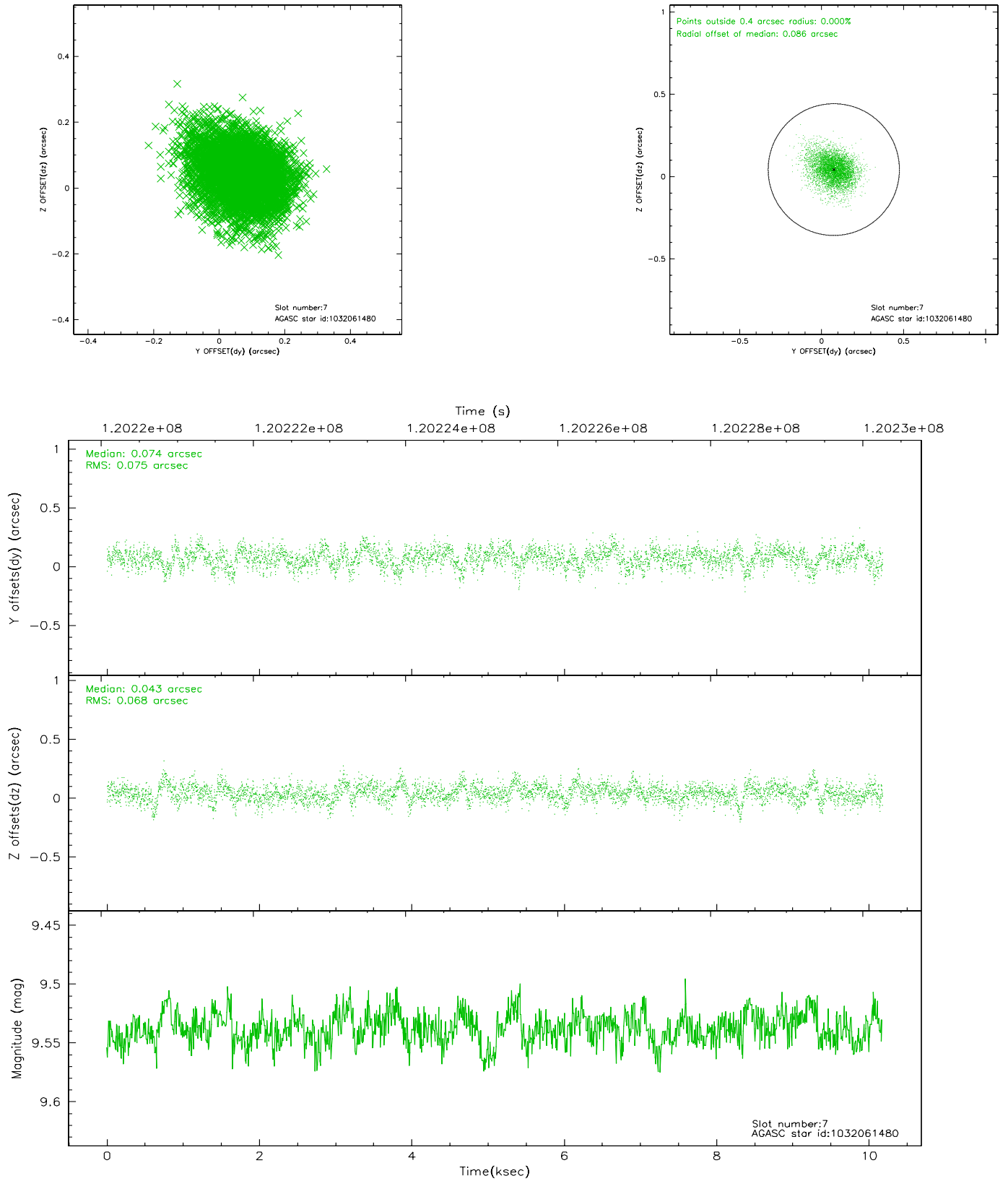
2.4.3 Slot 5



2.4.4 Slot 6

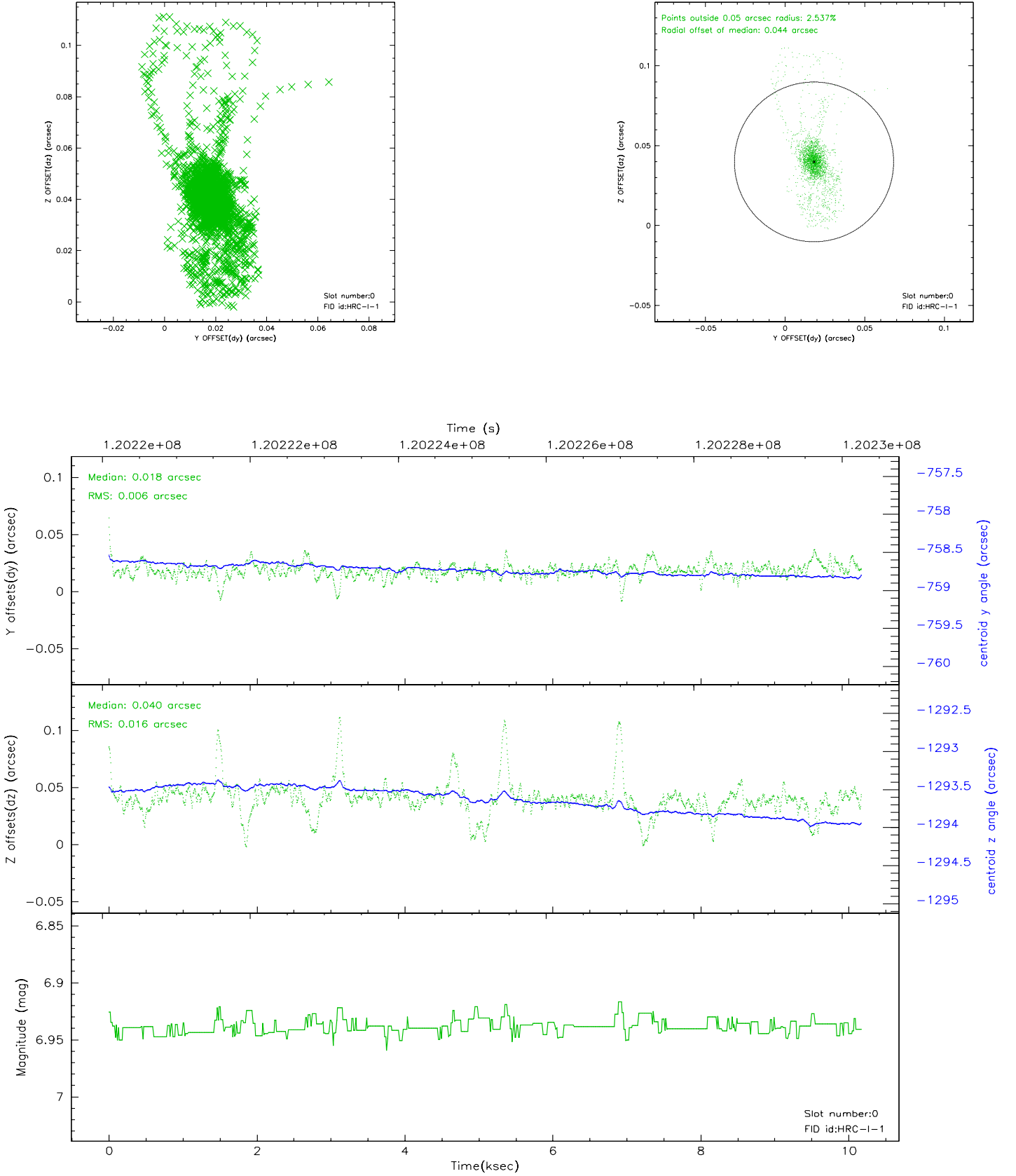


2.4.5 Slot 7

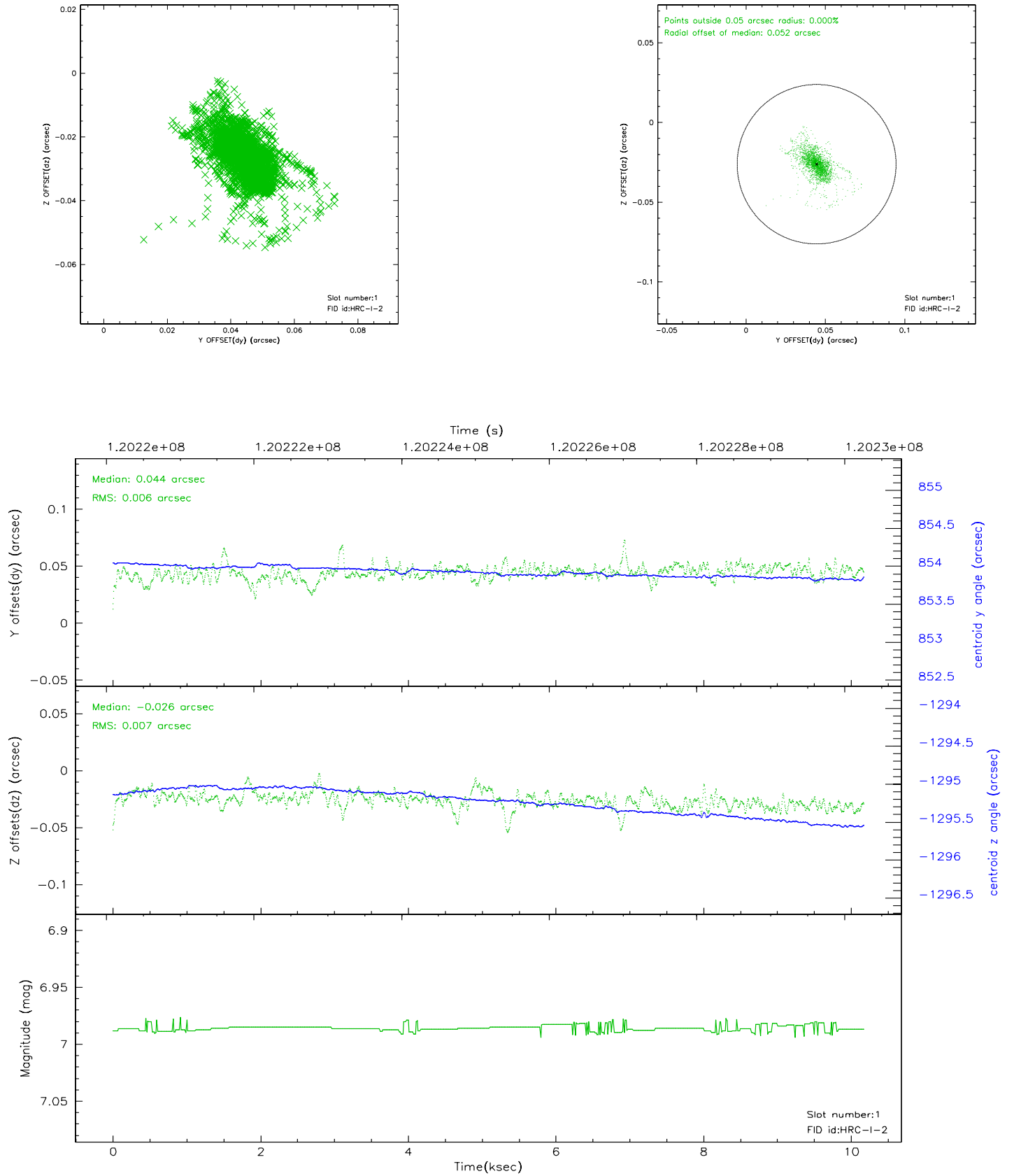


2.5 FID Slots

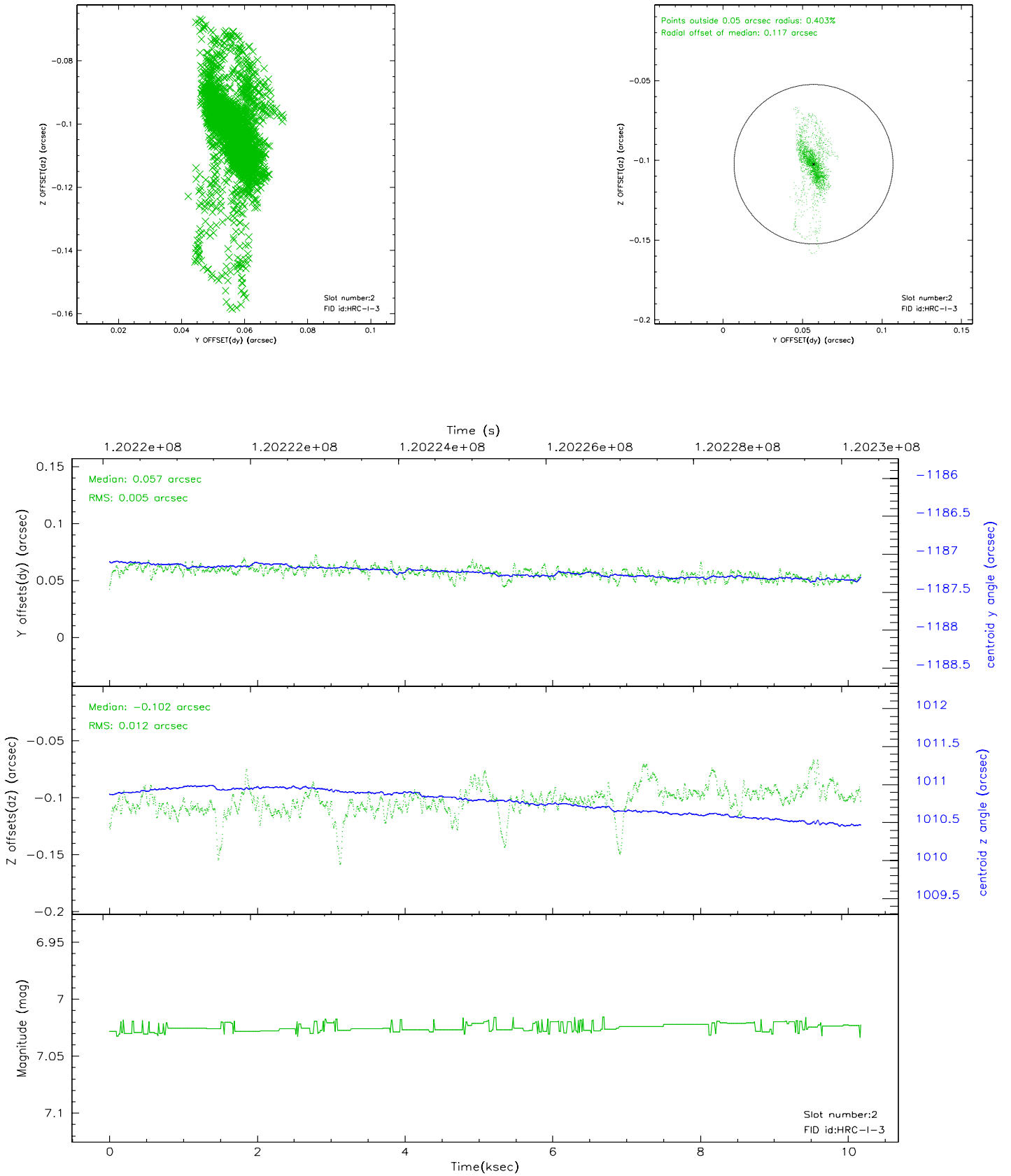
2.5.1 Slot 0



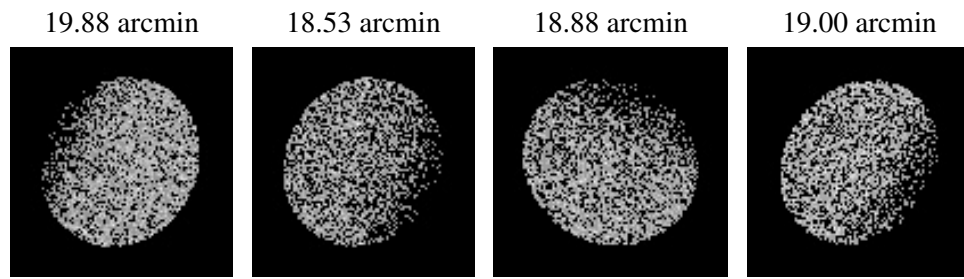
2.5.2 Slot 1



2.5.3 Slot 2



3 Point Sources



A Summary

A.1 Status

V&V Scientist	Jen Lauer
V&V Date (YYYY-MM-DD)	2007.12.03
V&V Edition	1
V&V Disposition and Status	OK
V&V Charge Time	9.868

A.2 Comments

The current observation has been reprocessed as part of Repro III ('C' supplement) the purpose of which is to update all HRC-I ObsIDs since Jan 2000 to the latest calibrations available for that configuration. Specifically, we are updating the DEGAP solution and the Gain Maps applied. For more information see the Repro IIIC web page at

<http://asc.harvard.edu/cda/repro3.html#IIIC>

and the associated links.