

# V&V Reference Report

## L2 ASCDS Version : 7.6.9

Observation 1043 - L2 Version 001  
Chandra X-Ray Center

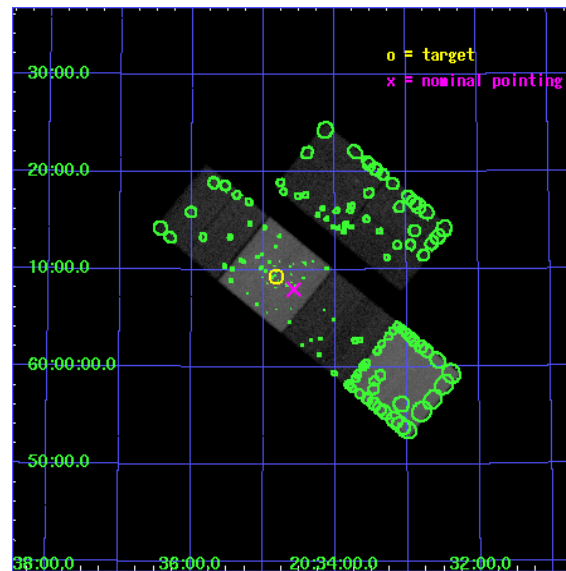
L2 Processing Date : Dec 31 2006

## Contents

<b>1</b>	<b>Front</b>	<b>2</b>
<b>2</b>	<b>OBI</b>	<b>3</b>
2.1	OBI . . . . .	3
2.1.1	Images . . . . .	3
2.1.2	Bias . . . . .	3
2.1.3	Parameters . . . . .	4
2.1.4	Events . . . . .	4
2.2	Compared Parameters . . . . .	5
2.3	Aspect . . . . .	6
2.4	Star Slots . . . . .	9
2.4.1	Slot 3 . . . . .	9
2.4.2	Slot 4 . . . . .	10
2.4.3	Slot 5 . . . . .	11
2.4.4	Slot 6 . . . . .	12
2.4.5	Slot 7 . . . . .	13
2.5	FID Slots . . . . .	14
2.5.1	Slot 0 . . . . .	14
2.5.2	Slot 1 . . . . .	15
2.5.3	Slot 2 . . . . .	16
<b>3</b>	<b>Point Sources</b>	<b>17</b>
<b>A</b>	<b>Summary</b>	<b>18</b>
A.1	Status . . . . .	18
A.2	Comments . . . . .	18

# 1 Front

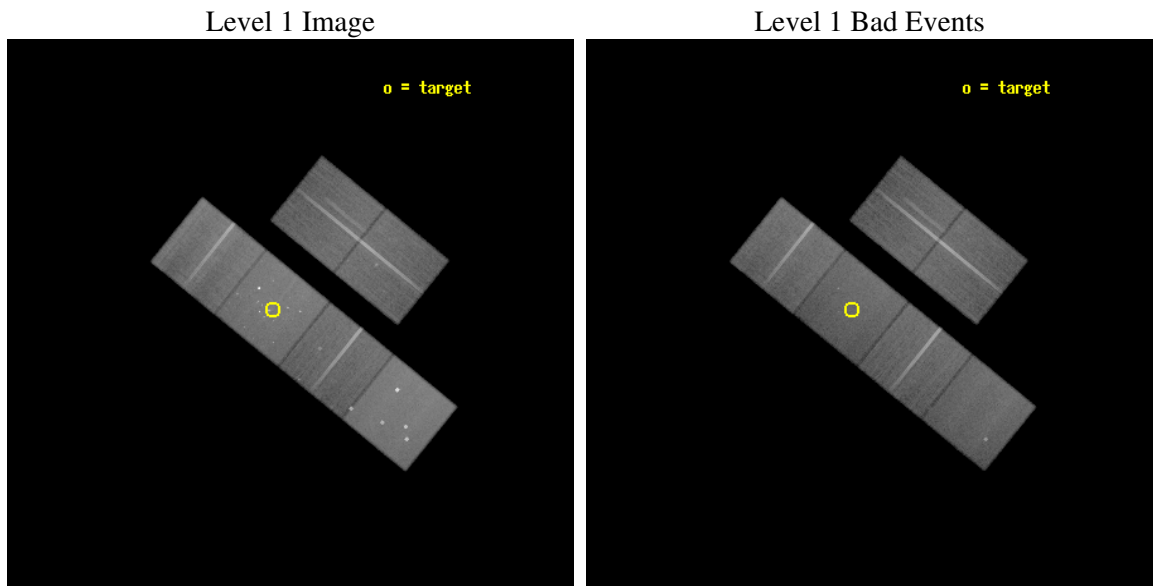
seq_num	500109
obs_id	1043
title	ACIS OBSERVATION OF THE SN AND SNR IN THE STARBURST GALAXY NGC6946
observer	DR STEPHEN HOLT
object	NGC 6946
dtcycle	0
cycle	P
ra_targ	308.704167
dec_targ	60.155278
ra_nom	308.64347868055
dec_nom	60.133124283921
roll_nom	219.04201226314
revision	2
ontime	59036.800054982
livetime	58289.240544993
ontime2	59033.559084728
ontime3	59033.559094727
ontime5	59036.800054982
ontime6	59036.800054982
ontime7	59036.800054982
ontime8	59033.559094727
l2events	578289



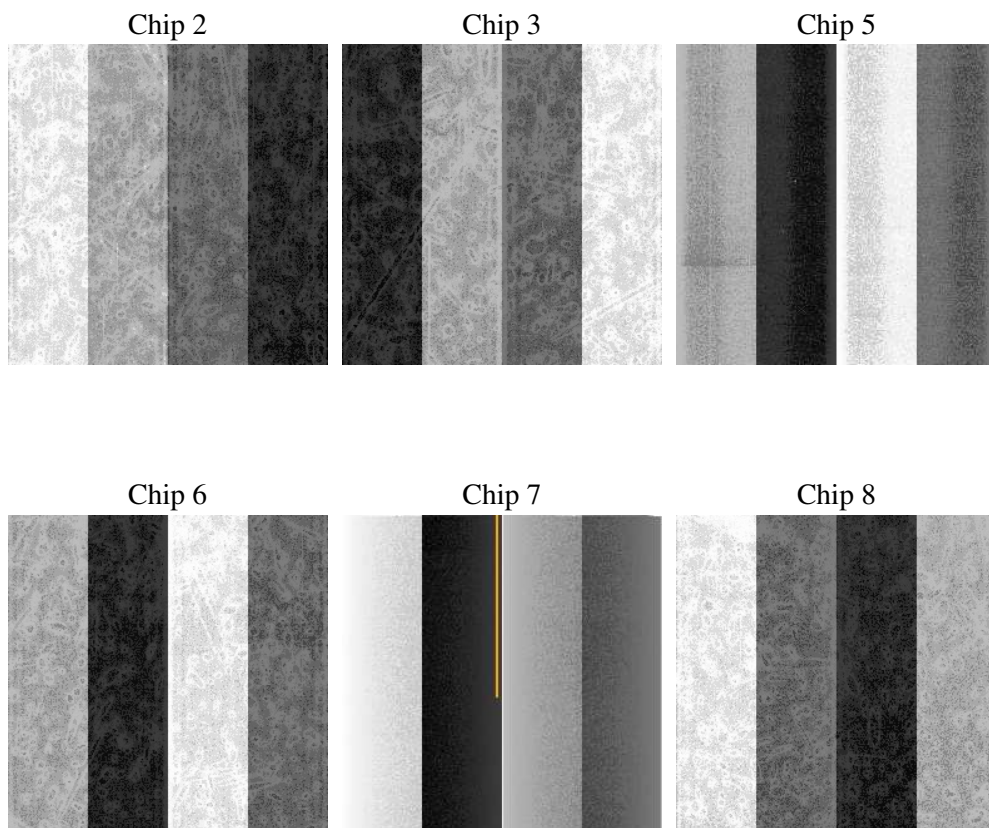
## 2 OBI

### 2.1 OBI

#### 2.1.1 Images



#### 2.1.2 Bias



### 2.1.3 Parameters

obi_num	0
ascdsver	7.6.9
caldsver	3.2.4
date	2006-12-31T05:25:00
revision	2

sched_exp_time	59282.095000
ontime	59041.28261283
ontime2	59038.04161267
ontime3	59038.041622669
ontime5	59041.282582924
ontime6	59041.282582924
ontime7	59041.28261283
ontime8	59038.041512996
l1events	2675467

### 2.1.4 Events

	ccd 2	ccd 3	ccd 5	ccd 6	ccd 7	ccd 8
level 1 events	389507	371390	550152	380948	507628	475842
rejected events	345689	329683	297912	337308	297405	380927
rejected %	88%	88%	54%	88%	58%	80%

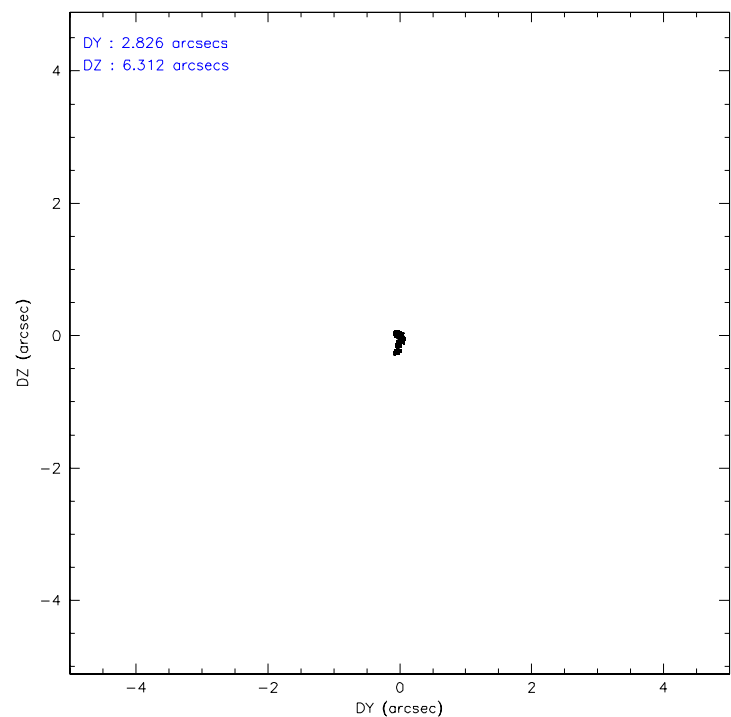
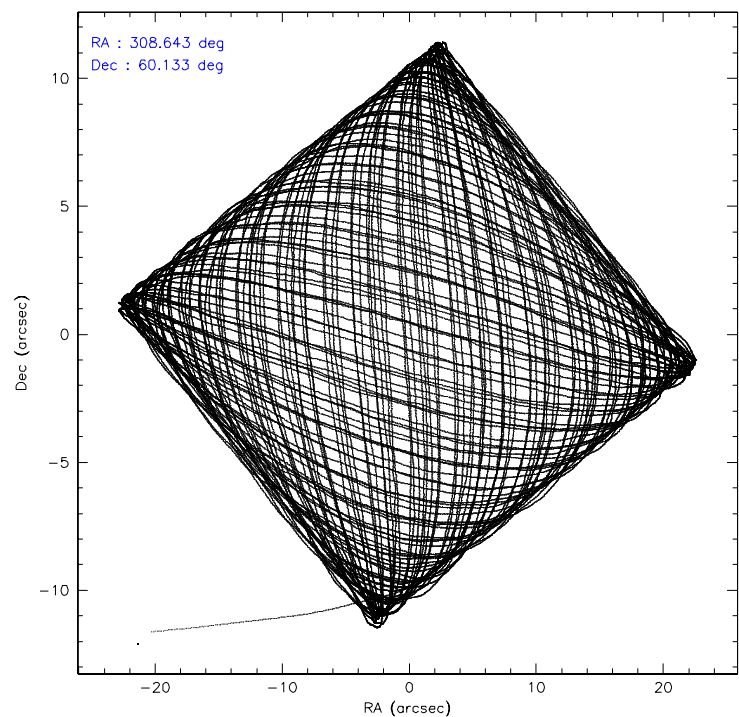
	ccd 2	ccd 3	ccd 5	ccd 6	ccd 7	ccd 8
grade 0 events	18999	17719	34789	17901	18785	29952
	4%	4%	6%	4%	3%	6%
grade 1 events	186	191	500	192	331	270
	0%	0%	0%	0%	0%	0%
grade 2 events	9296	8424	73219	8639	52510	20188
	2%	2%	13%	2%	10%	4%
grade 3 events	4004	4136	5728	4323	12762	10387
	1%	1%	1%	1%	2%	2%
grade 4 events	3989	4068	5073	4267	12398	9789
	1%	1%	0%	1%	2%	2%
grade 5 events	13012	14194	26443	15904	33028	20068
	3%	3%	4%	4%	6%	4%
grade 6 events	7532	7360	133444	8513	113780	24599
	1%	1%	24%	2%	22%	5%
grade 7 events	332489	315298	270956	321209	264034	360589
	85%	84%	49%	84%	52%	75%

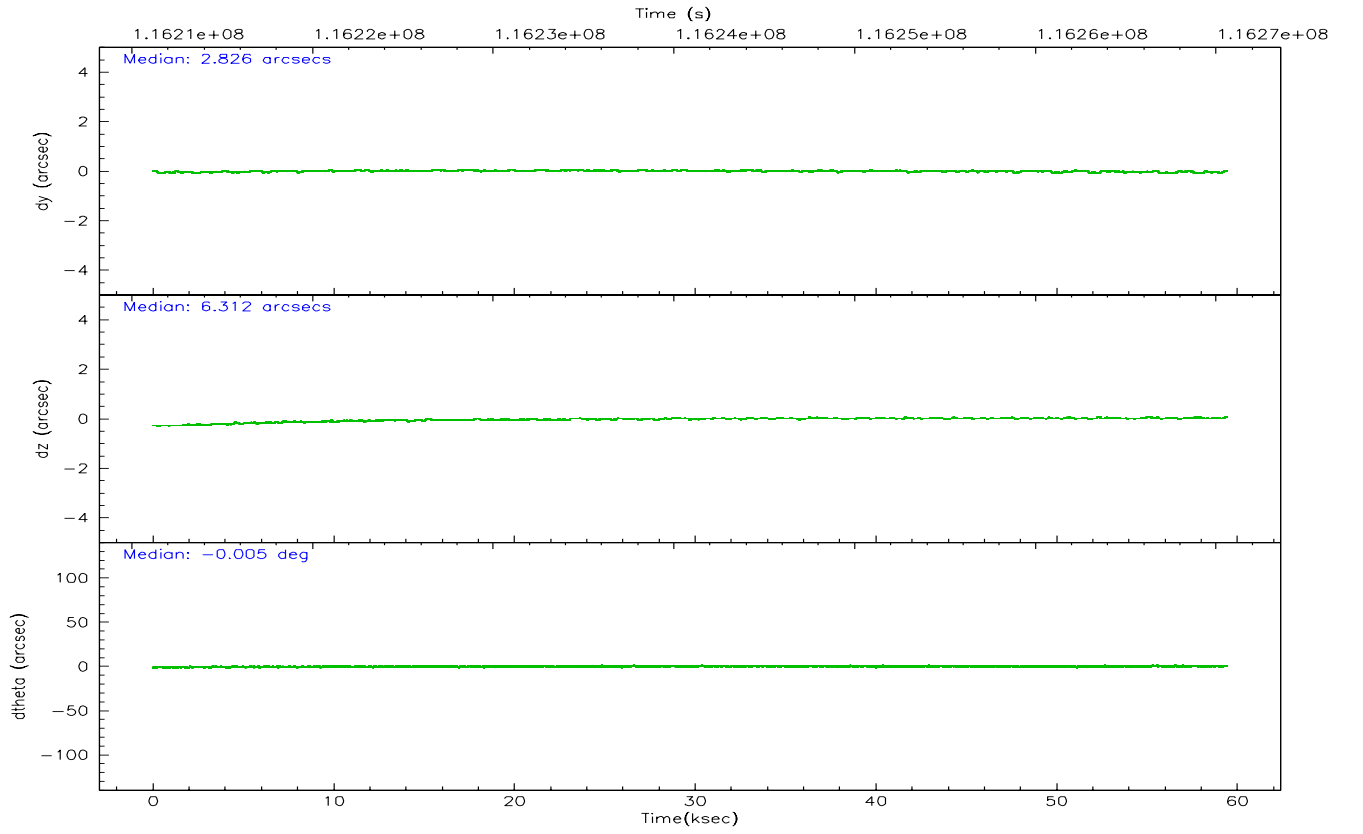
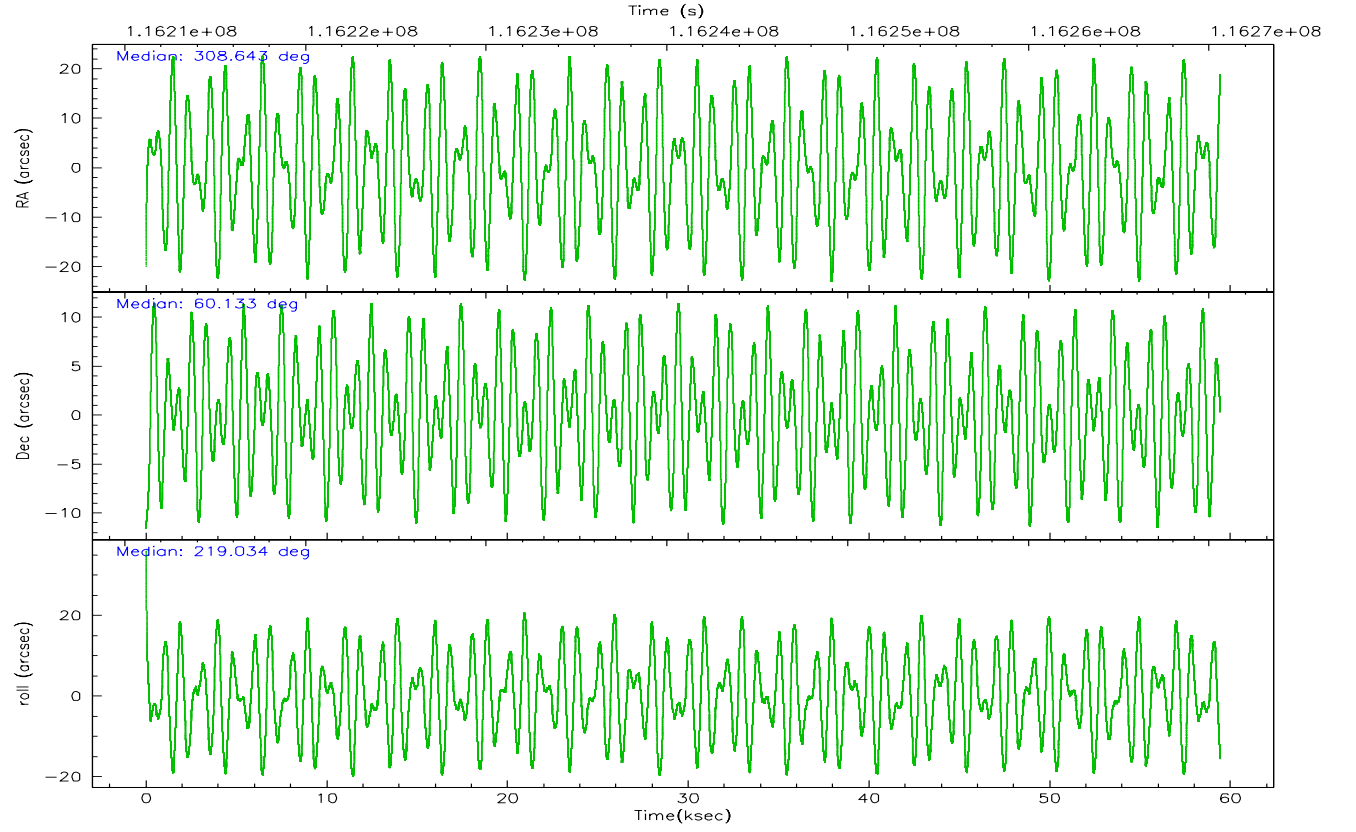


## 2.2 Compared Parameters

Parameter	Planned	Actual	Parameter	Planned	Actual
Instrument	ACIS	ACIS	Obspar format version number	6	6
Detector	ACIS-235678	ACIS-235678	Obspar file type	PREDICTED	ACTUAL
Grating	NONE	NONE	Obspar update status	NONE	UPDATED
Data mode	FAINT	FAINT	Number of optional ACIS chips dropped	0	0
Observation mode	POINTING	POINTING	On-chip summing requested	N	N
Pointing RA	308.662508	308.643478680554	Subarray requested	NONE	NONE
Pointing Dec	60.158702	60.13312428392089	Alternating exposures requested	N	N
Pointing Roll	218.868877	219.0420122631379	Primary exposure time	0.000000	3.2
SIM focus pos (mm)	-0.684267	-0.6828225247311905			
SIM defocus (mm)	0	0.001444936568705701			
SIM translation stage pos (mm)	-190.132523	-190.1425803651734			
SIM translation stage offset (mm)	0	0.01005778216563158			
Observation start time	116211332.184000	116210341.07523			
Observation start date	2001-09-07T00:54:28	2001-09-07T00:39:01			
Observation end time	116270614.184000	116271218.39013			
Observation end date	2001-09-07T17:22:30	2001-09-07T17:33:38			
Read mode	TIMED	TIMED			

2.3 Aspect



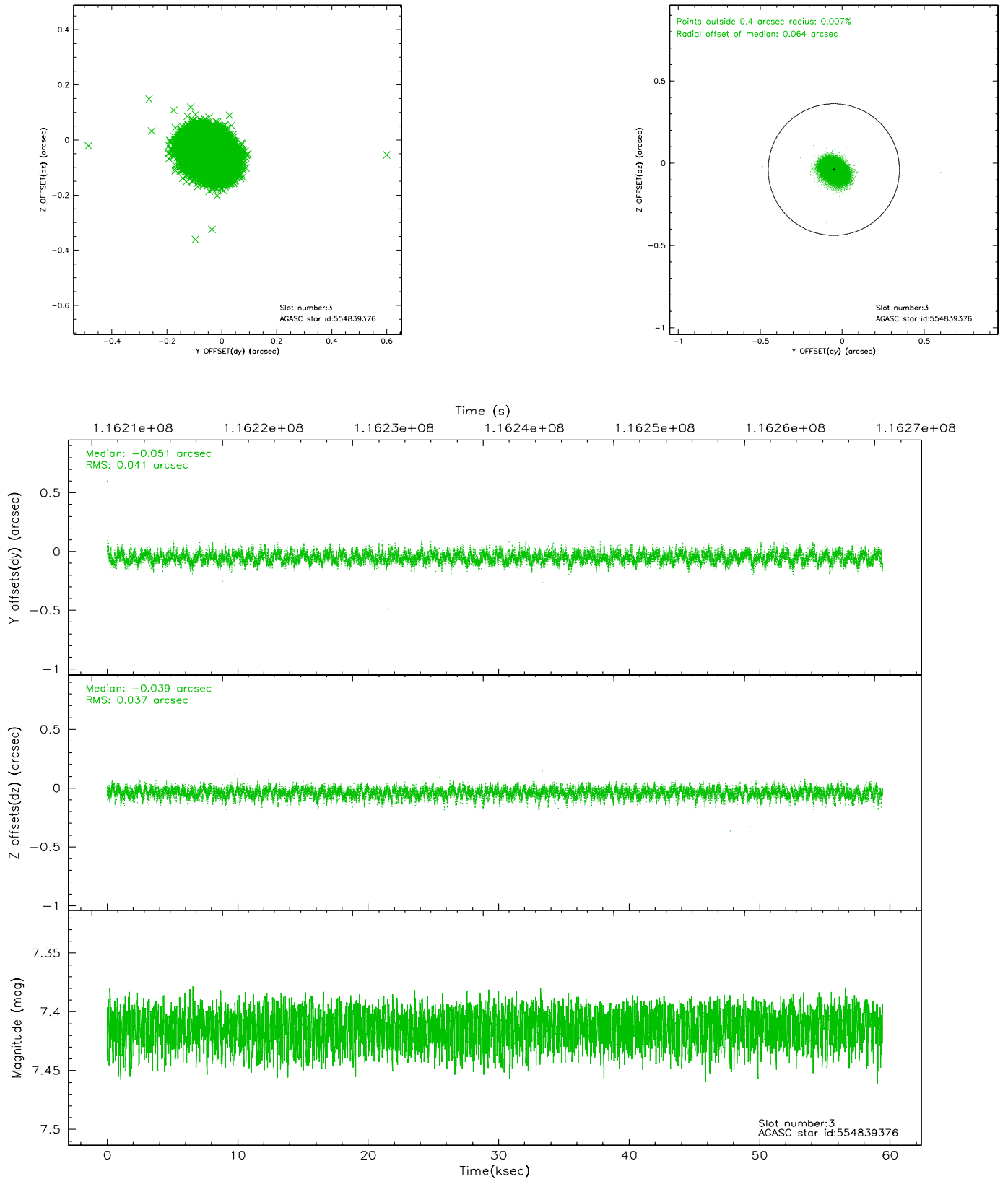


### Slot Statistics

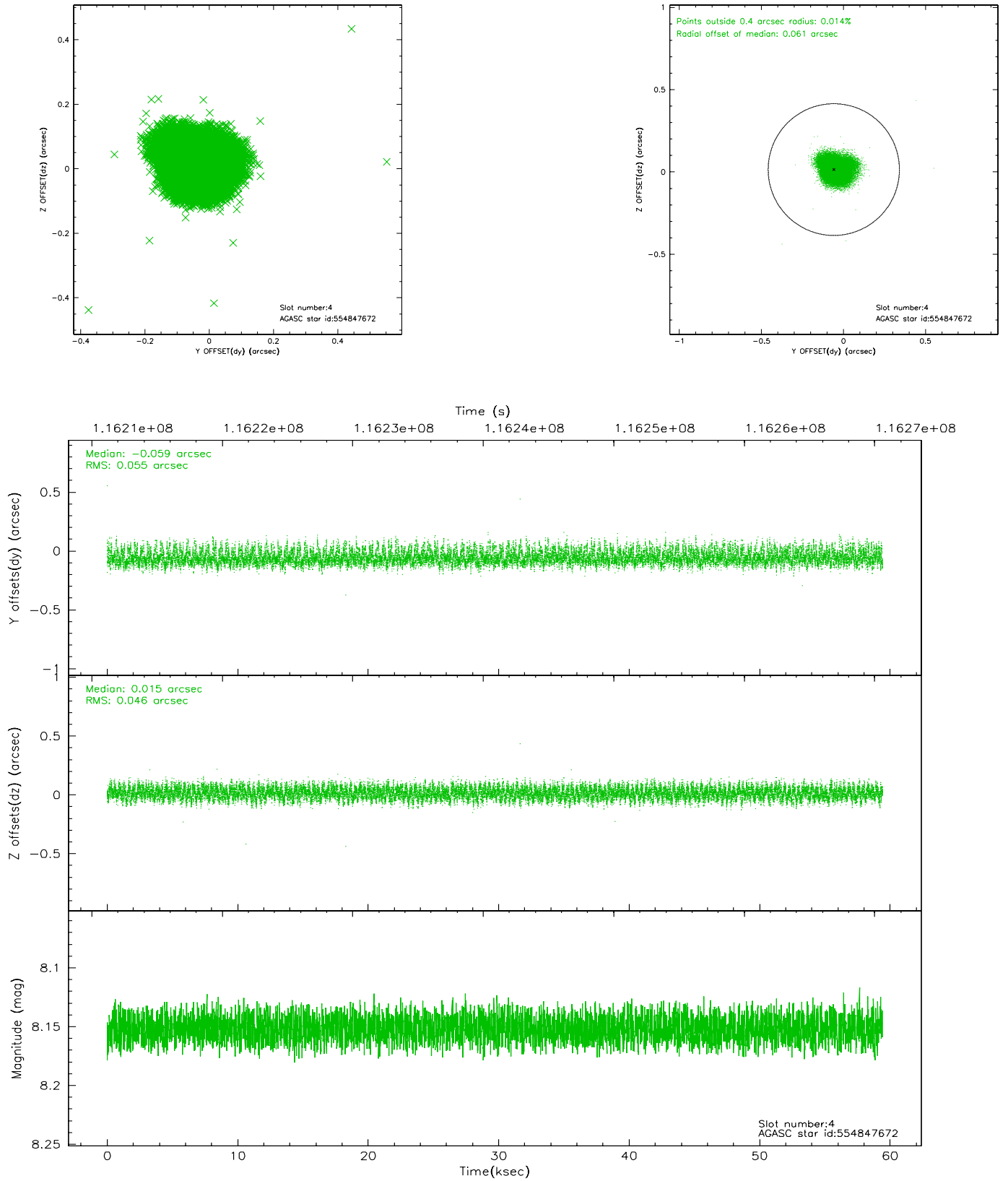
slot	status	id	mag	n_pts	med_dy	med_dz	dr1	dr2	ra	dec	mean_y	mean_z
0	FID	ACIS-S-1	7.19	14494	-0.015	-0.019	0.007	0.013	0.000000	0.000000	940.56	-1723.02
1	FID	ACIS-S-5	7.24	14495	0.037	0.002	0.006	0.010	0.000000	0.000000	-1808.40	174.60
2	FID	ACIS-S-6	7.35	14495	-0.044	0.028	0.007	0.012	0.000000	0.000000	406.13	818.54
3	GUIDE	554839376	7.41	28993	-0.051	-0.039	0.059	0.096	308.018563	60.422364	291.86	-1460.62
4	GUIDE	554847672	8.15	28987	-0.059	0.015	0.076	0.124	307.328728	60.421634	1236.41	-2242.04
5	GUIDE	554842440	8.17	28992	0.059	0.029	0.067	0.109	307.970960	60.063321	1178.68	-516.56
6	GUIDE	519311352	8.74	28984	-0.075	0.032	0.074	0.116	309.050952	59.661888	570.74	1834.96
7	GUIDE	556537192	9.19	28984	0.124	-0.033	0.093	0.153	309.975880	60.344309	-2255.35	930.09

## 2.4 Star Slots

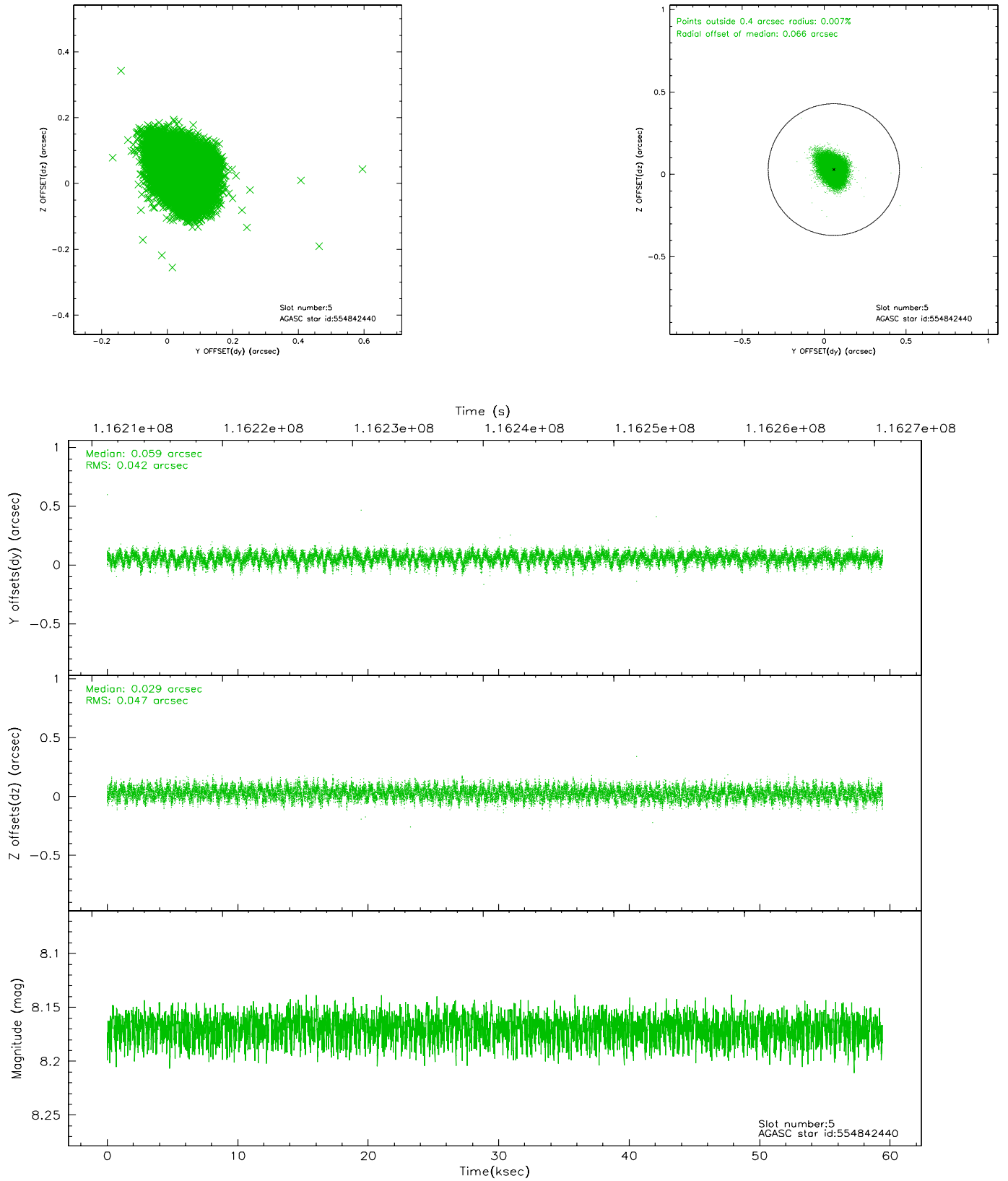
### 2.4.1 Slot 3



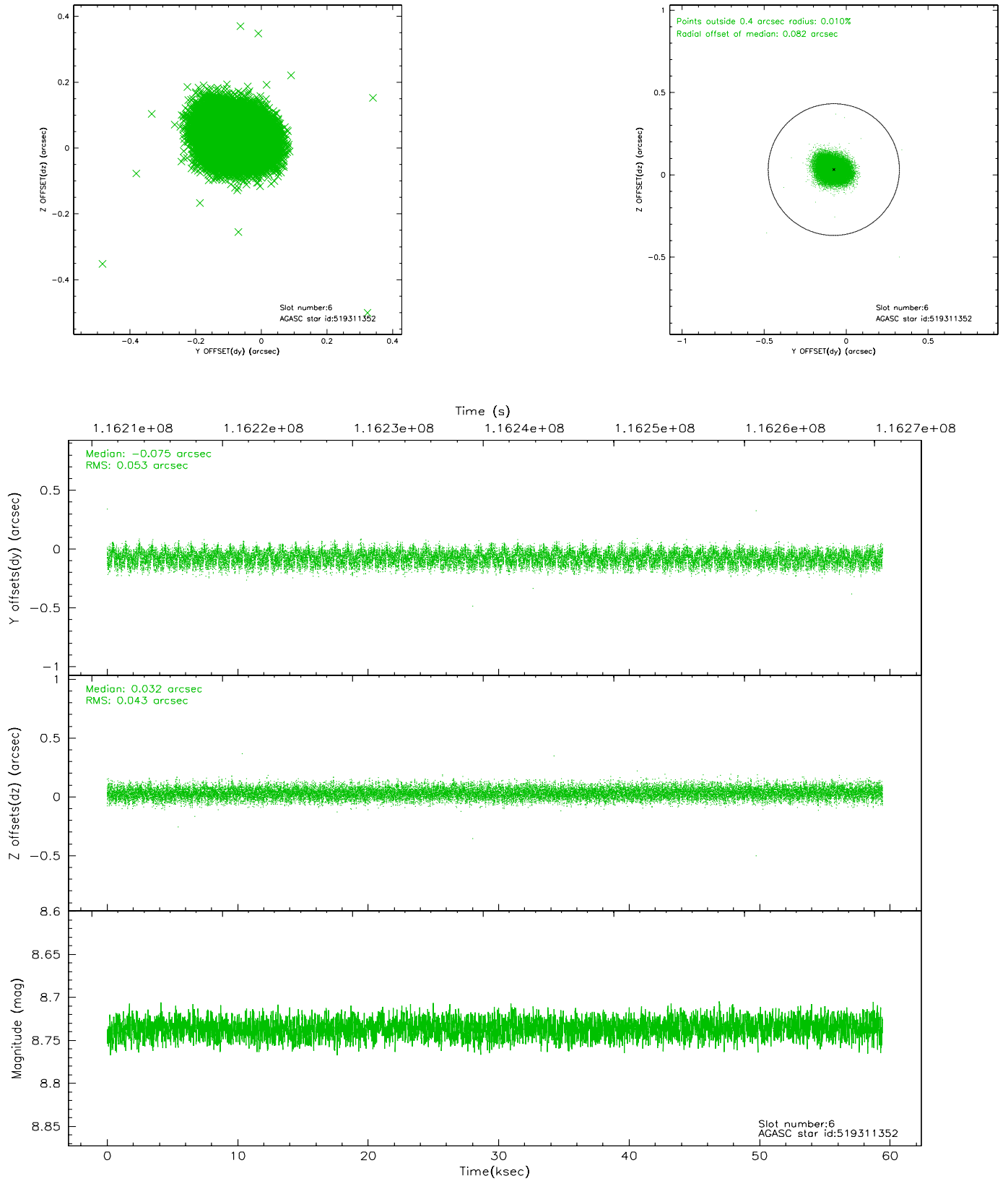
## 2.4.2 Slot 4



### 2.4.3 Slot 5

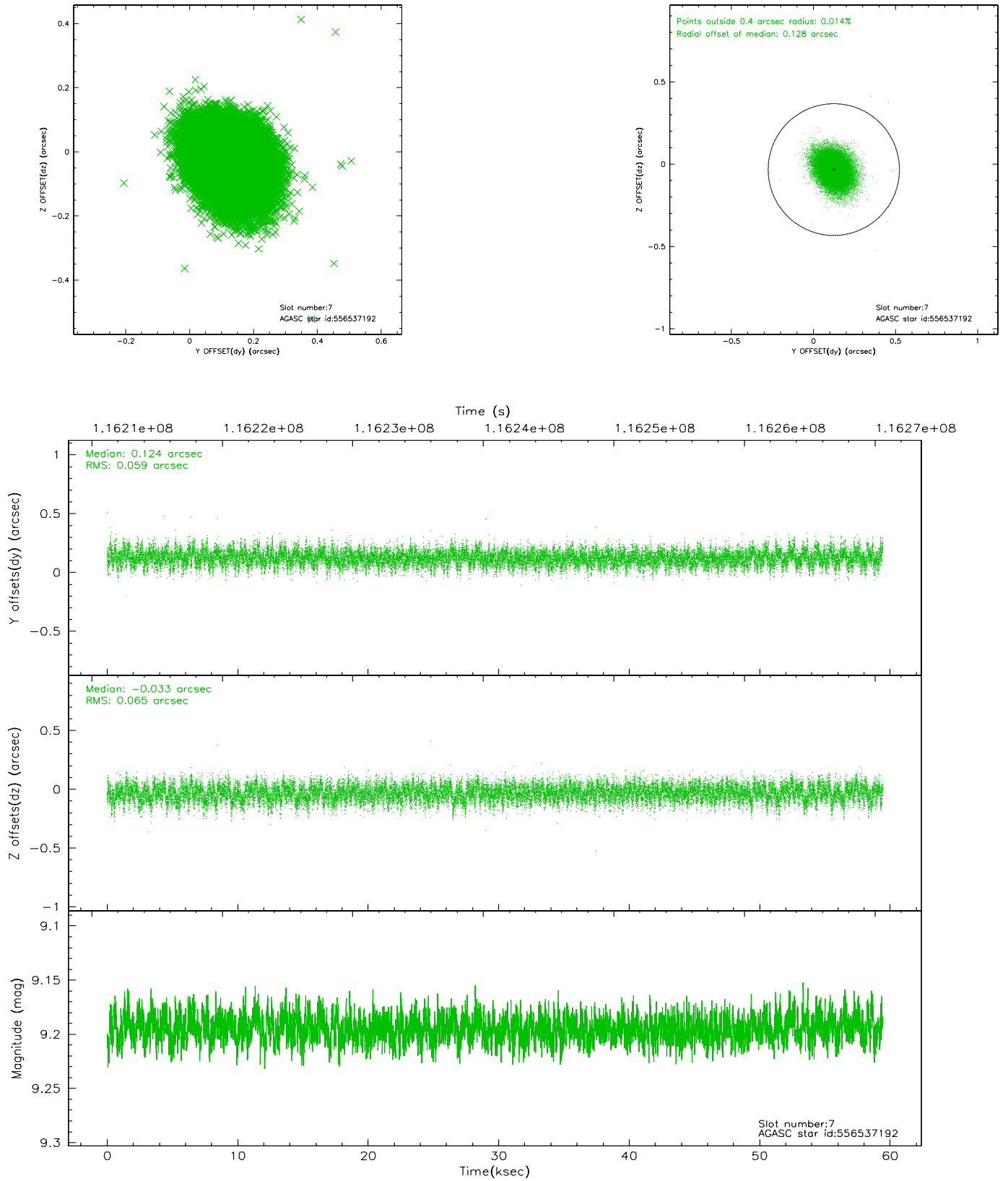


## 2.4.4 Slot 6



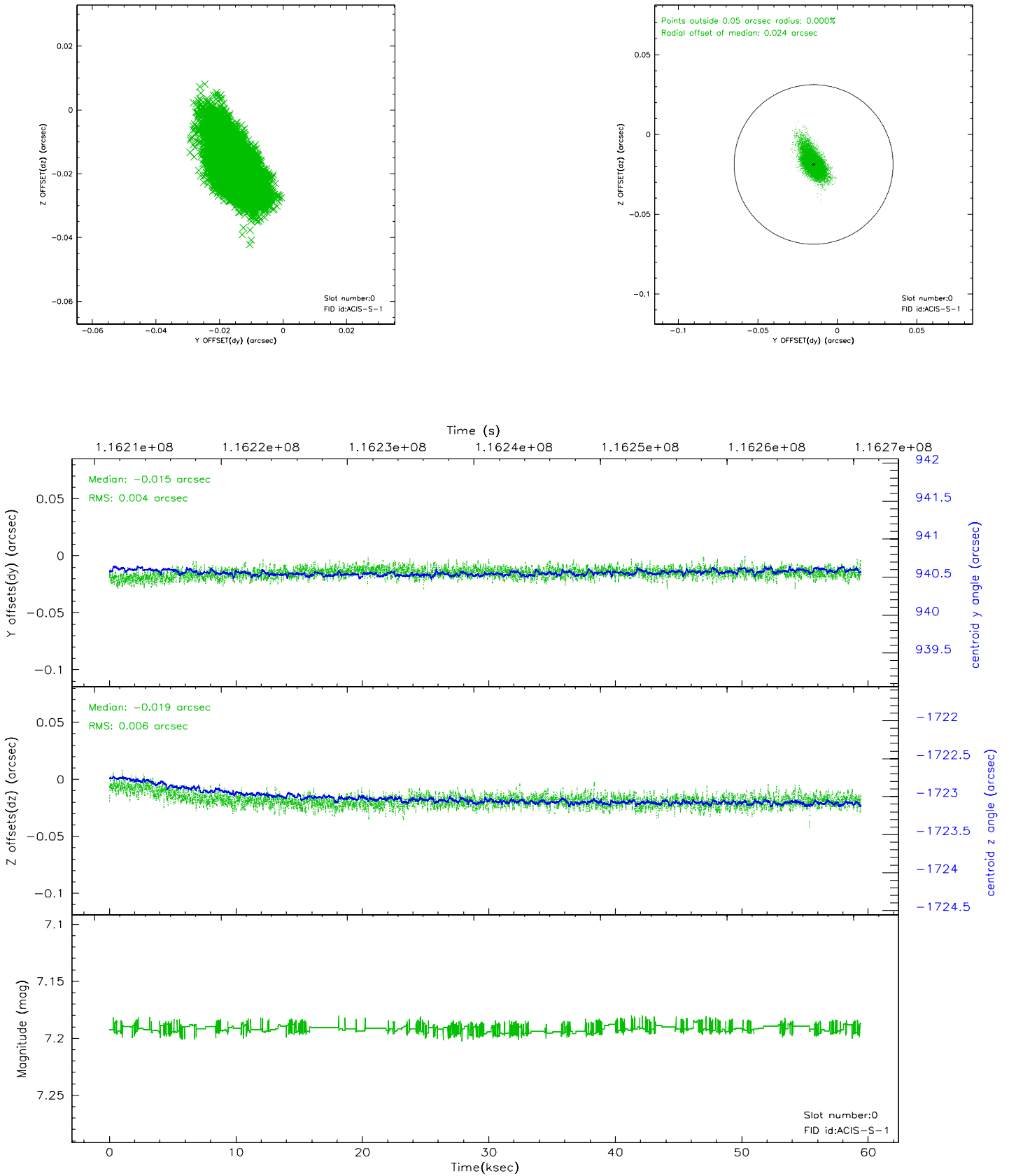


## 2.4.5 Slot 7

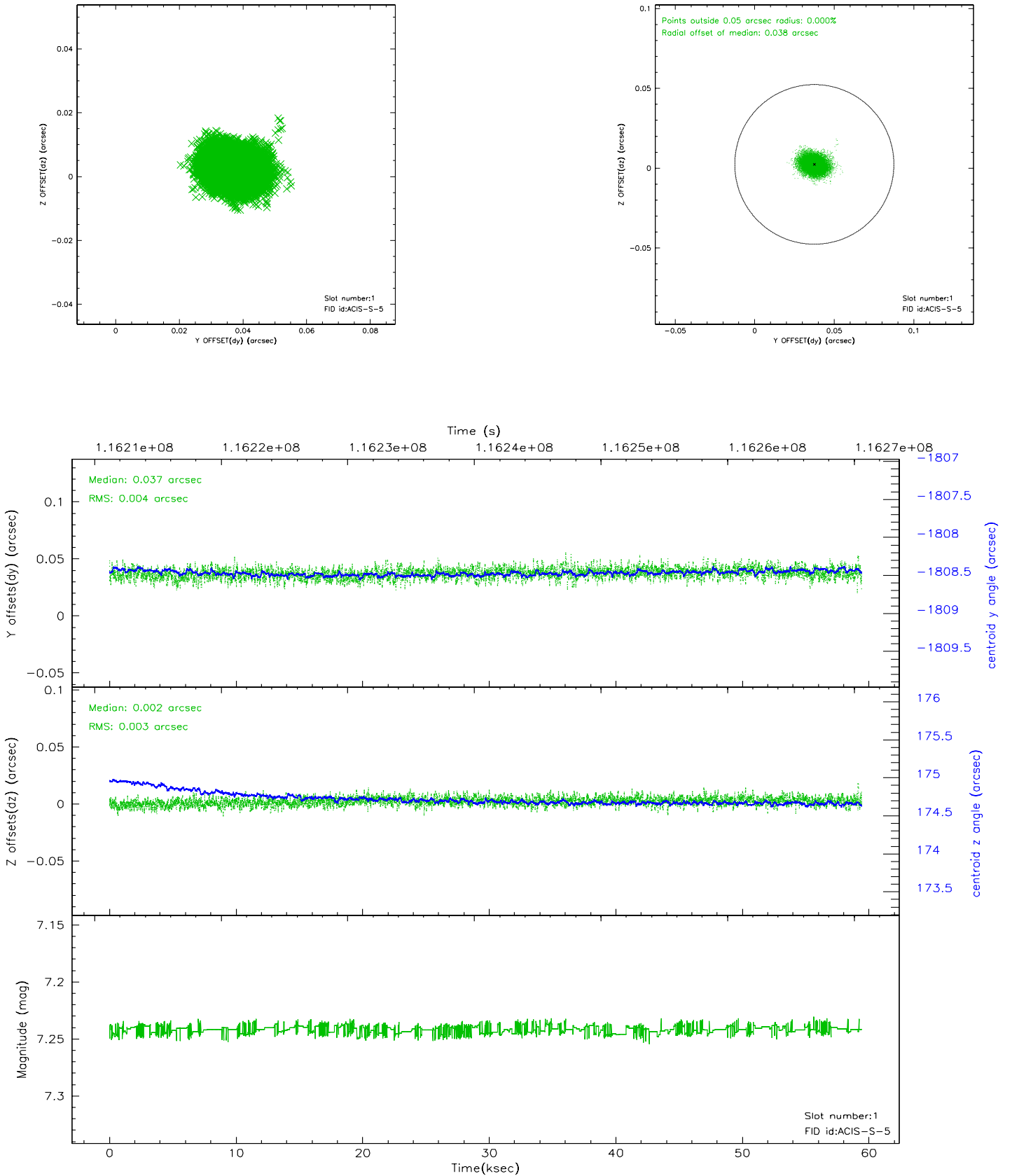


## 2.5 FID Slots

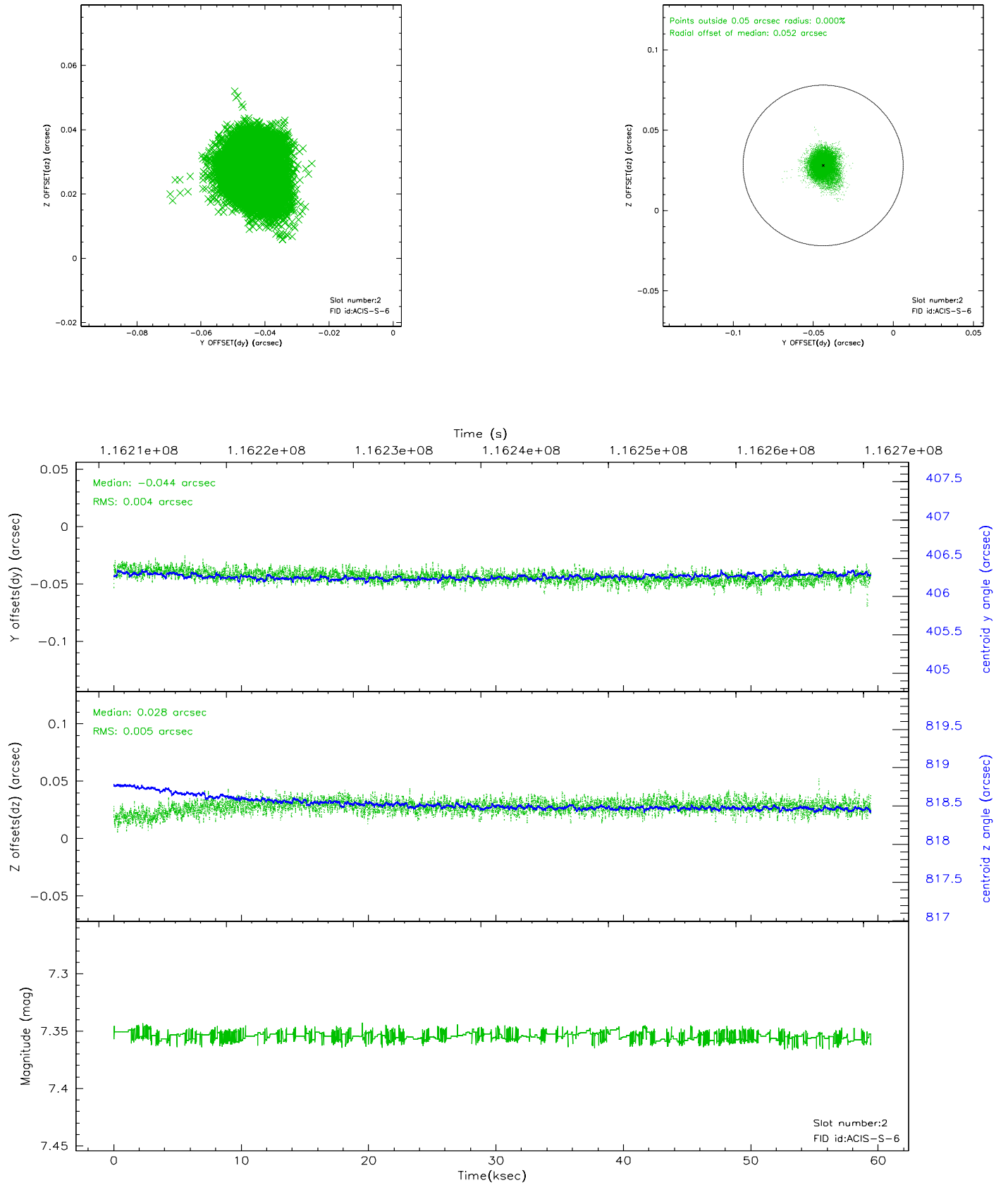
### 2.5.1 Slot 0



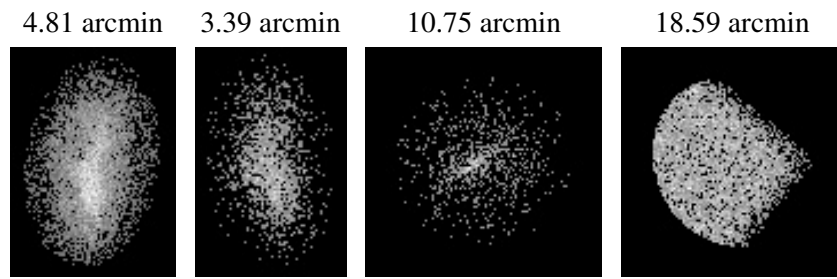
## 2.5.2 Slot 1



### 2.5.3 Slot 2



### 3 Point Sources



## A Summary

### A.1 Status

V&V Scientist	Beth Sundheim
V&V Date (YYYY-MM-DD)	2007.01.04
V&V Edition	1
V&V Disposition and Status	OK
V&V Charge Time	59.036

### A.2 Comments