

V&V Reference Report

L2 ASCDS Version : 7.6.9

Observation 1934 - L2 Version 001
Chandra X-Ray Center

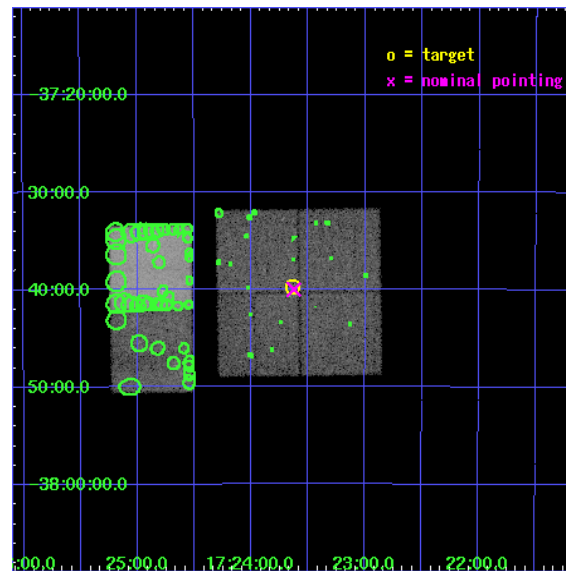
L2 Processing Date : Dec 30 2006

Contents

1	Front	2
2	OBI	3
2.1	OBI	3
2.1.1	Images	3
2.1.2	Bias	3
2.1.3	Parameters	4
2.1.4	Events	4
2.2	Compared Parameters	5
2.3	Aspect	6
2.4	Star Slots	9
2.4.1	Slot 3	9
2.4.2	Slot 4	10
2.4.3	Slot 5	11
2.4.4	Slot 6	12
2.4.5	Slot 7	13
2.5	FID Slots	14
2.5.1	Slot 0	14
2.5.2	Slot 1	15
2.5.3	Slot 2	16
3	Point Sources	17
A	Summary	18
A.1	Status	18
A.2	Comments	18

1 Front

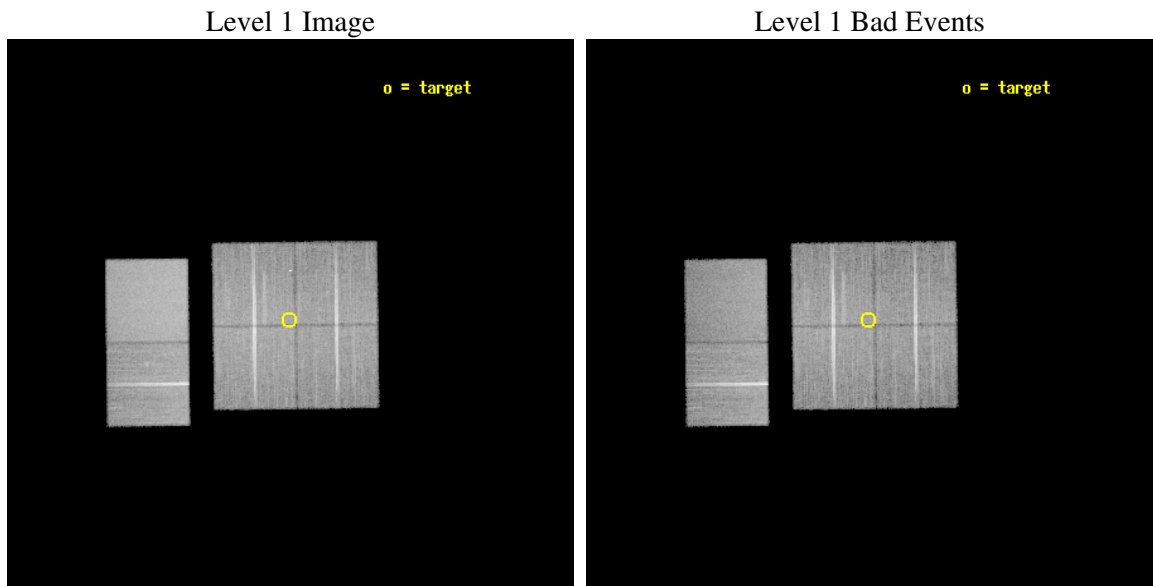
seq_num	400147
obs_id	1934
title	QUIESCENT AND LOW LUMINOSITY X-RAY BINARIES
observer	DR CRAIG MARKWARDT
object	XTE J1723-376
dtcycle	0
cycle	P
ra_targ	260.90875
dec_targ	-37.662389
ra_nom	260.90634145822
dec_nom	-37.666714429198
roll_nom	269.25542506861
revision	2
ontime	29718.400027677
livetime	29342.087752255
ontime0	29718.400027677
ontime1	29718.400027677
ontime2	29715.159067437
ontime3	29718.400027677
ontime6	29718.400027677
ontime7	29718.400027677
l2events	208193



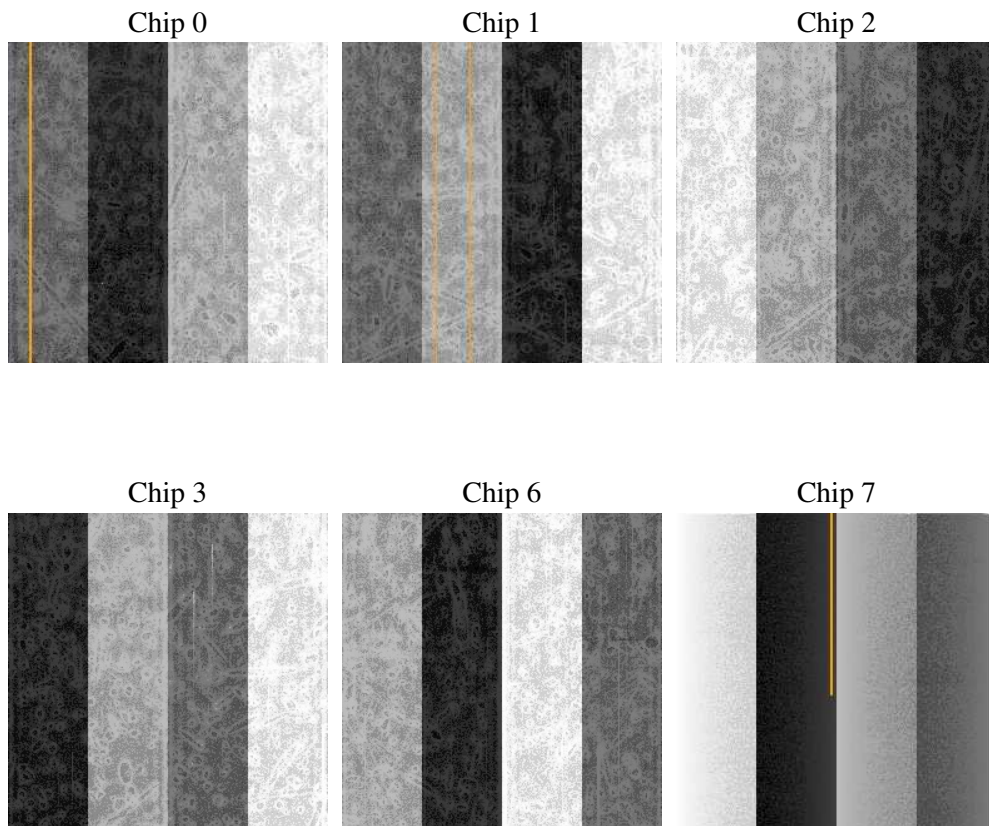
2 OBI

2.1 OBI

2.1.1 Images



2.1.2 Bias



2.1.3 Parameters

obi_num	0
ascdsver	7.6.9
caldsver	3.2.4
date	2006-12-31T01:37:29
revision	2

sched_exp_time	29700.000000
ontime	29723.207824633
ontime0	29723.207824633
ontime1	29723.207824633
ontime2	29719.966864392
ontime3	29723.207824633
ontime6	29723.207824633
ontime7	29723.207844555
l1events	1184815

2.1.4 Events

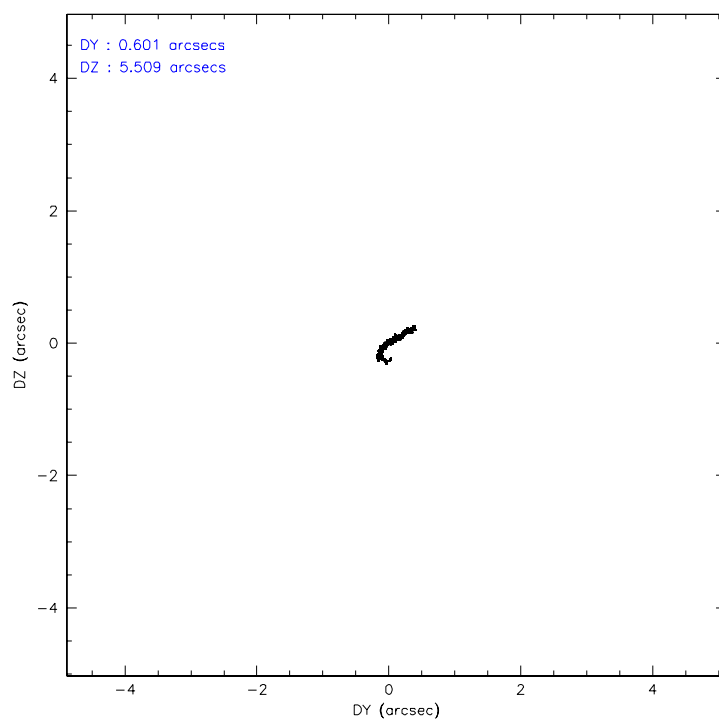
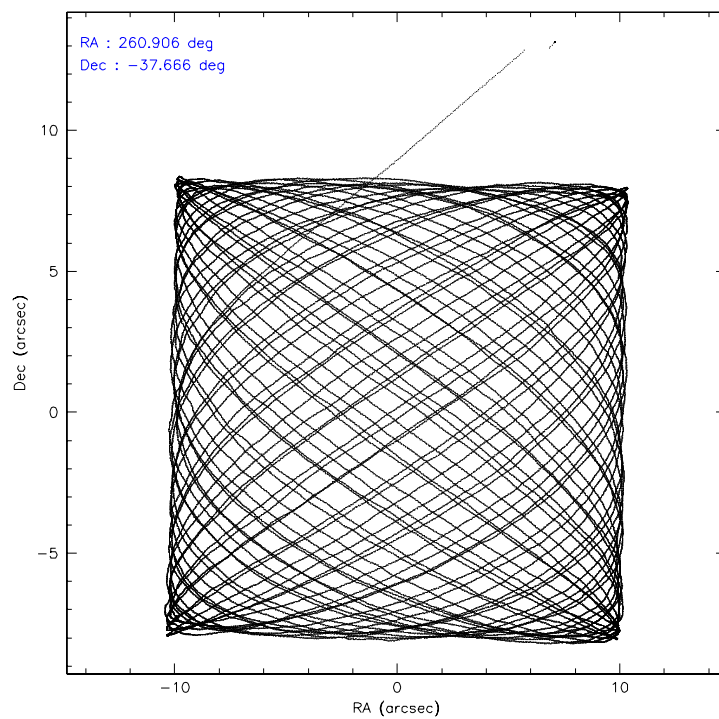
	ccd 0	ccd 1	ccd 2	ccd 3	ccd 6	ccd 7
level 1 events	171381	173348	190668	190382	201588	257448
rejected events	147960	148711	167857	166531	176647	150170
rejected %	86%	85%	88%	87%	87%	58%

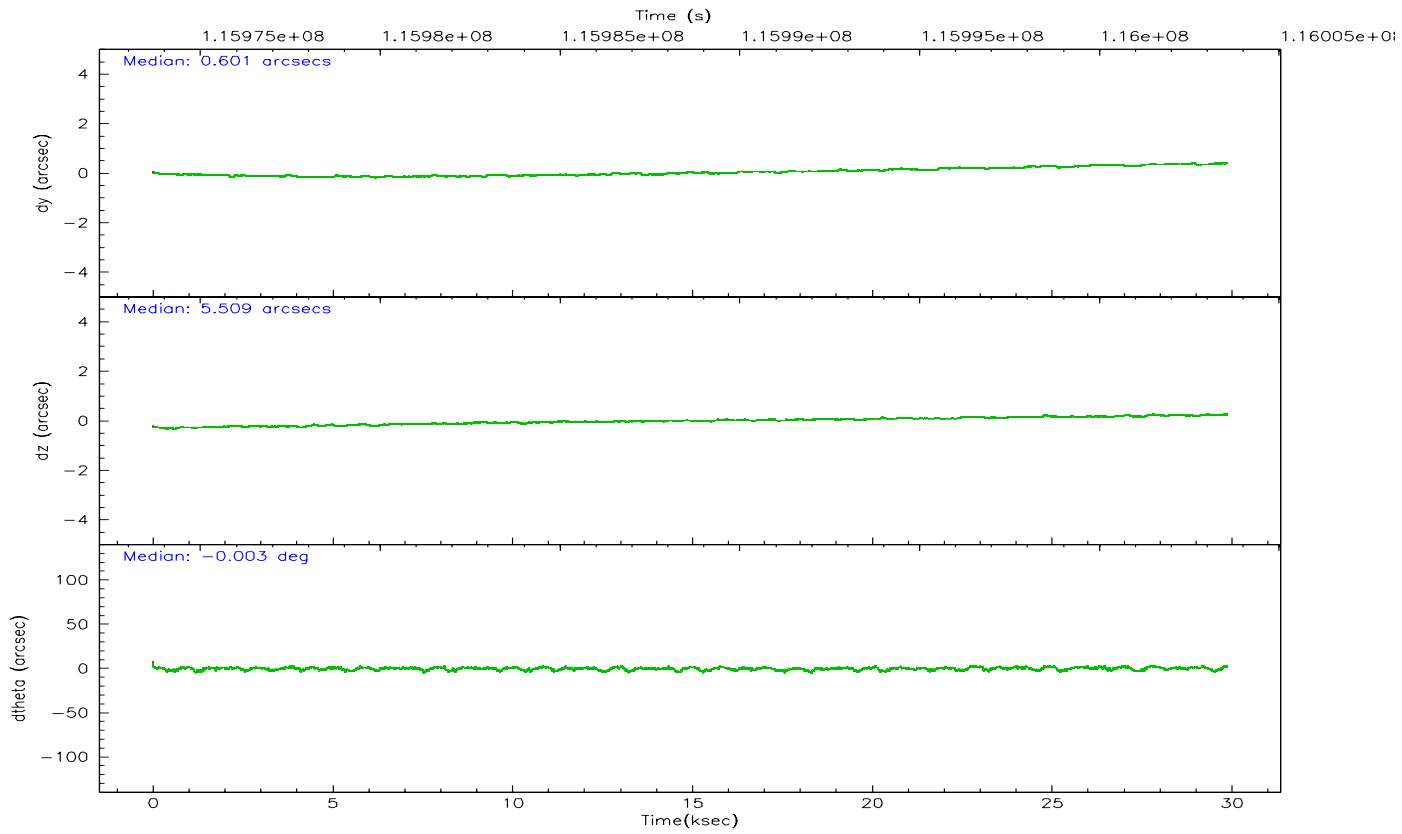
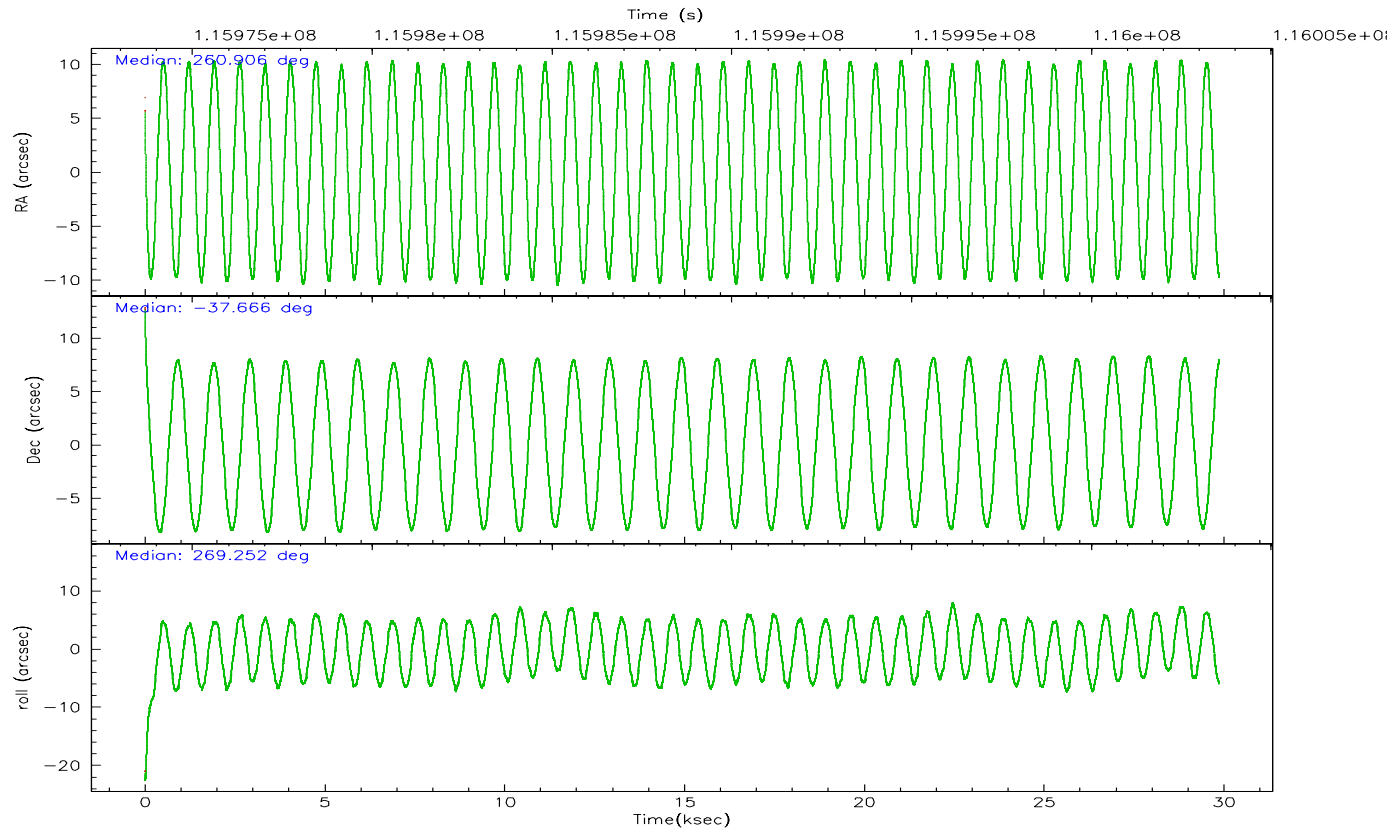
	ccd 0	ccd 1	ccd 2	ccd 3	ccd 6	ccd 7
grade 0 events	10441	10589	10375	11128	11459	7338
	6%	6%	5%	5%	5%	2%
grade 1 events	82	93	86	102	96	121
	0%	0%	0%	0%	0%	0%
grade 2 events	4883	4974	4672	4593	4699	25778
	2%	2%	2%	2%	2%	10%
grade 3 events	2232	2462	1996	2162	2260	5977
	1%	1%	1%	1%	1%	2%
grade 4 events	2081	2283	2019	2062	2181	5766
	1%	1%	1%	1%	1%	2%
grade 5 events	6775	7237	6480	7353	8200	16068
	3%	4%	3%	3%	4%	6%
grade 6 events	3788	4334	3750	3909	4344	62443
	2%	2%	1%	2%	2%	24%
grade 7 events	141099	141376	161290	159073	168349	133957
	82%	81%	84%	83%	83%	52%

2.2 Compared Parameters

Parameter	Planned	Actual	Parameter	Planned	Actual
Instrument	ACIS	ACIS	Obspar format version number	6	6
Detector	ACIS-012367	ACIS-012367	Obspar file type	PREDICTED	ACTUAL
Grating	NONE	NONE	Obspar update status	NONE	UPDATED
Data mode	FAINT	FAINT	Number of optional ACIS chips dropped	0	0
Observation mode	POINTING	POINTING	On-chip summing requested	N	N
Pointing RA	260.889373	260.9063414582176	Subarray requested	NONE	NONE
Pointing Dec	-37.642795	-37.66671442919754	Alternating exposures requested	N	N
Pointing Roll	269.036379	269.2554250686129	Primary exposure time	0.000000	3.2
SIM focus pos (mm)	-0.782348	-0.7809083437167272			
SIM defocus (mm)	0	0.001439871863259334			
SIM translation stage pos (mm)	-233.592463	-233.5874344608287			
SIM translation stage offset (mm)	0	-0.005018542100998502			
Observation start time	115973847.184000	115972852.15334			
Observation start date	2001-09-04T06:56:23	2001-09-04T06:40:52			
Observation end time	116003547.184000	116004220.74208			
Observation end date	2001-09-04T15:11:23	2001-09-04T15:23:40			
Read mode	TIMED	TIMED			

2.3 Aspect



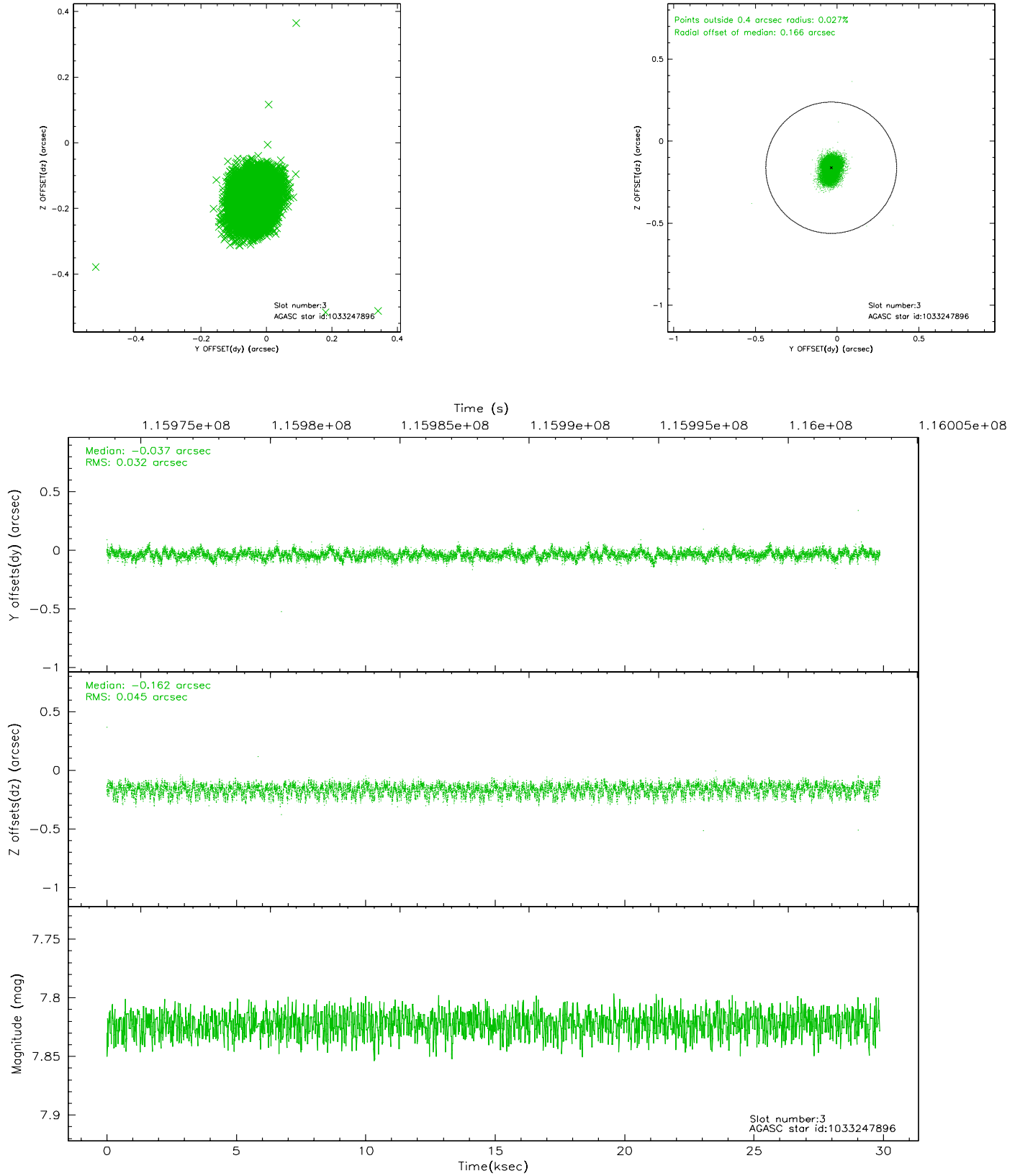


Slot Statistics

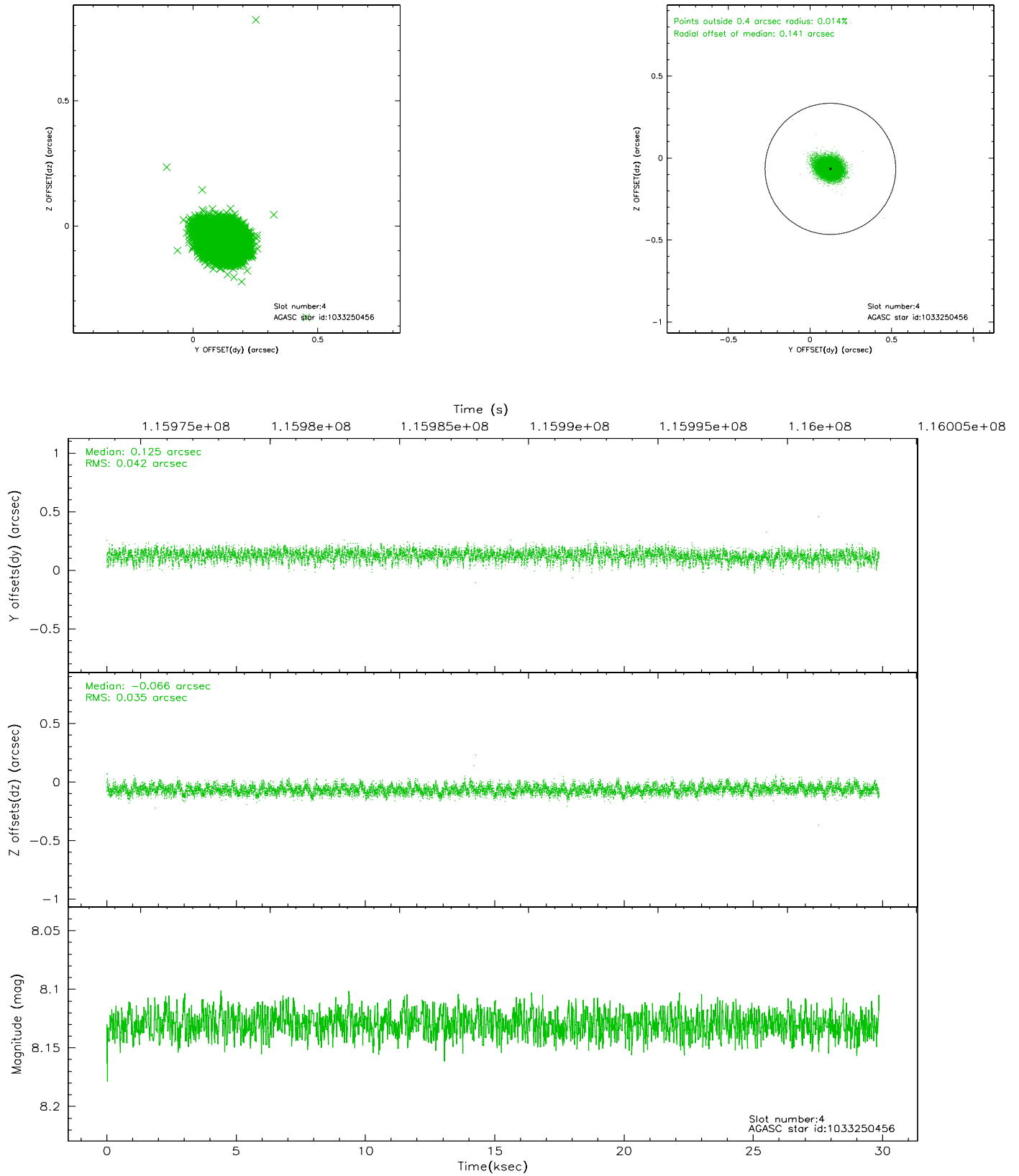
slot	status	id	mag	n_pts	med_dy	med_dz	dr1	dr2	ra	dec	mean_y	mean_z
0	FID	ACIS-I-2	7.39	7286	-0.017	-0.037	0.014	0.025	0.000000	0.000000	-754.98	-835.27
1	FID	ACIS-I-4	7.43	7284	-0.042	0.030	0.016	0.043	0.000000	0.000000	2159.00	1070.97
2	FID	ACIS-I-5	7.23	7284	-0.039	0.076	0.017	0.035	0.000000	0.000000	-1808.75	1068.90
3	GUIDE	1033247896	7.82	14569	-0.037	-0.162	0.058	0.095	260.498894	-37.521028	-416.37	-1121.79
4	GUIDE	1033250456	8.13	14569	0.125	-0.066	0.057	0.094	260.370756	-38.260120	2251.83	-1427.93
5	GUIDE	966526152	8.63	14567	-0.187	0.075	0.055	0.092	260.874678	-37.077581	-2032.97	-76.07
6	GUIDE	1033248728	8.03	14569	0.105	0.077	0.046	0.073	260.825514	-37.987689	1245.38	-159.63
7	GUIDE	1033242968	8.69	14551	-0.011	0.081	0.083	0.129	261.526236	-37.609777	-142.42	1814.64

2.4 Star Slots

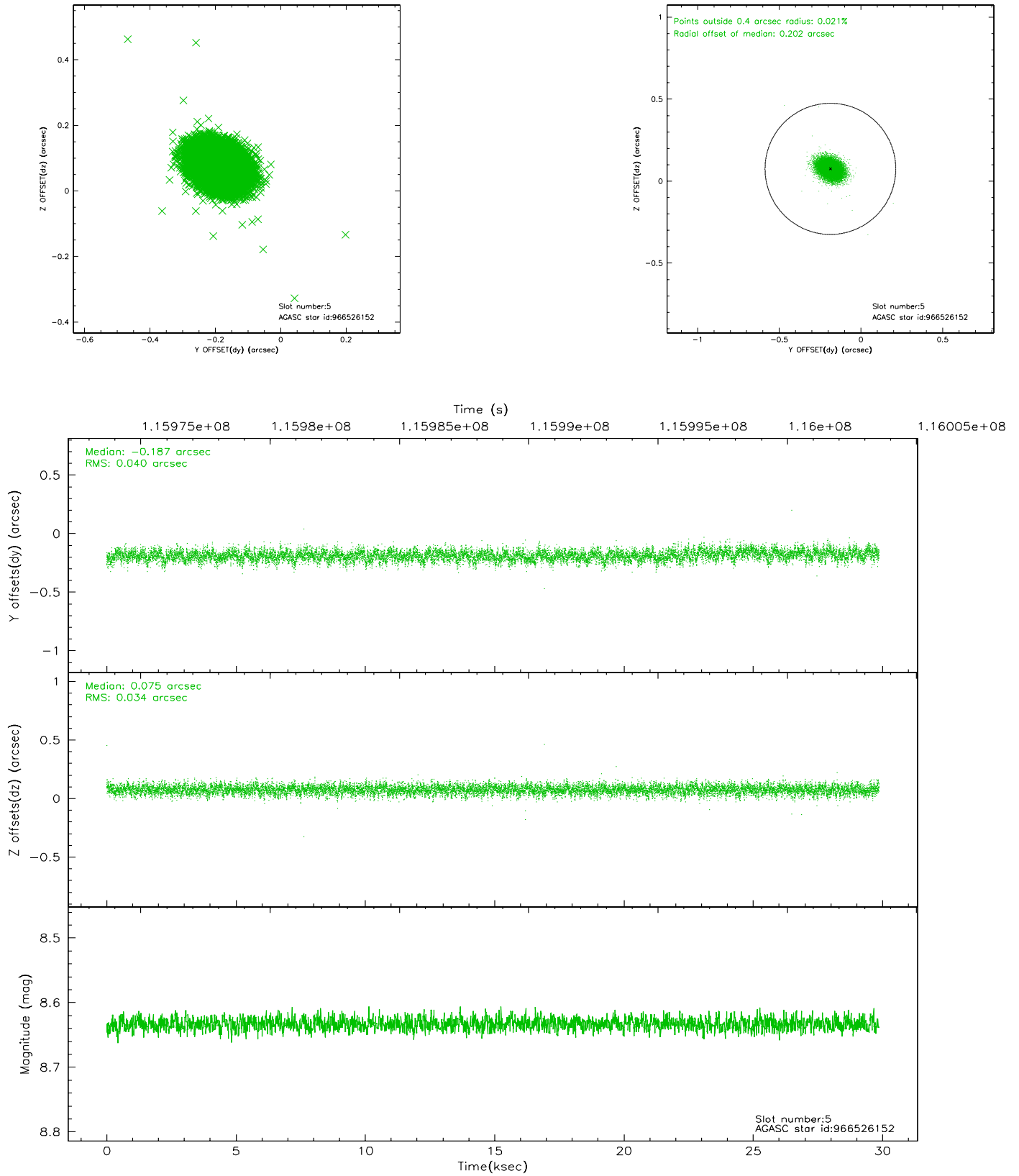
2.4.1 Slot 3



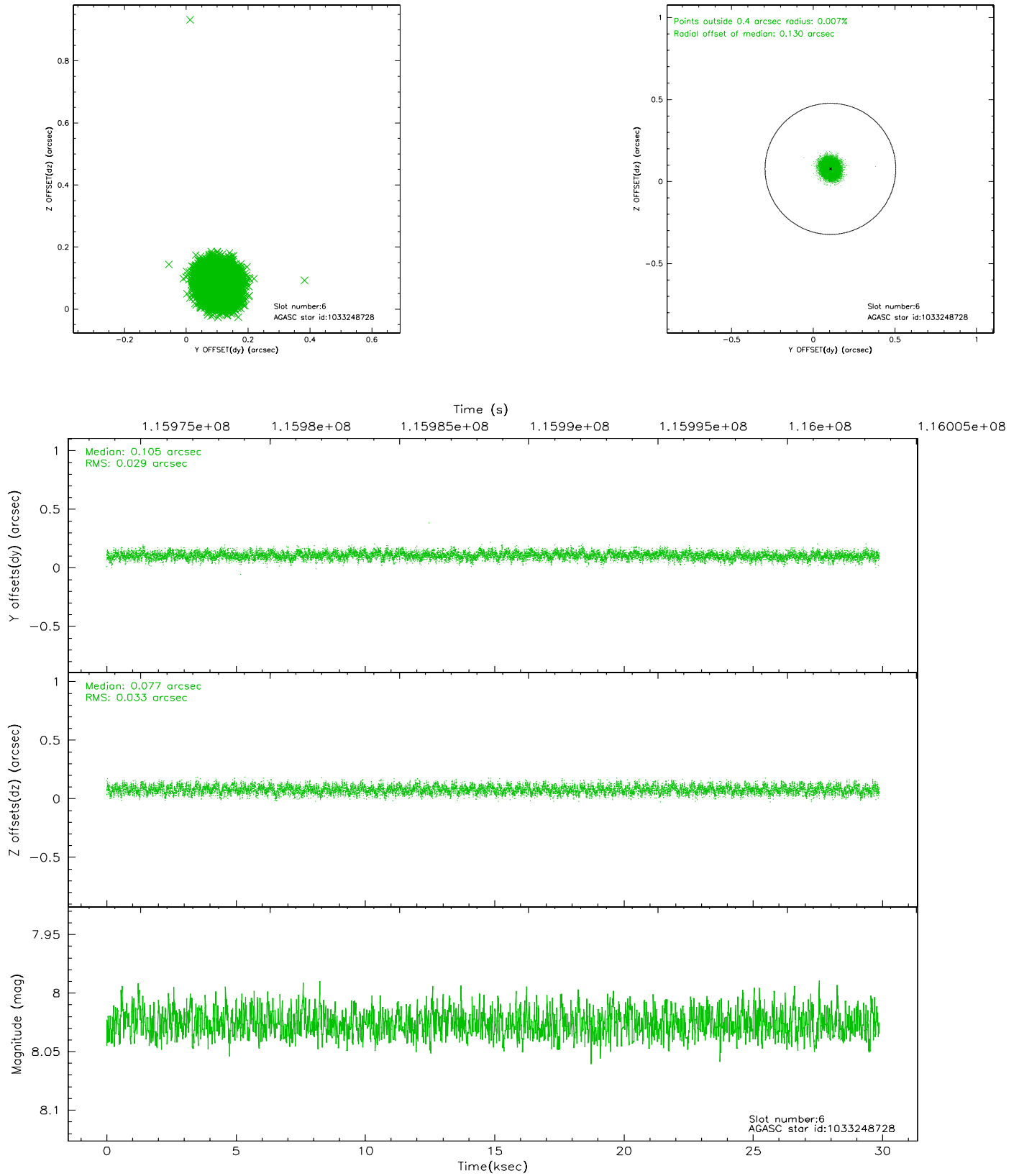
2.4.2 Slot 4



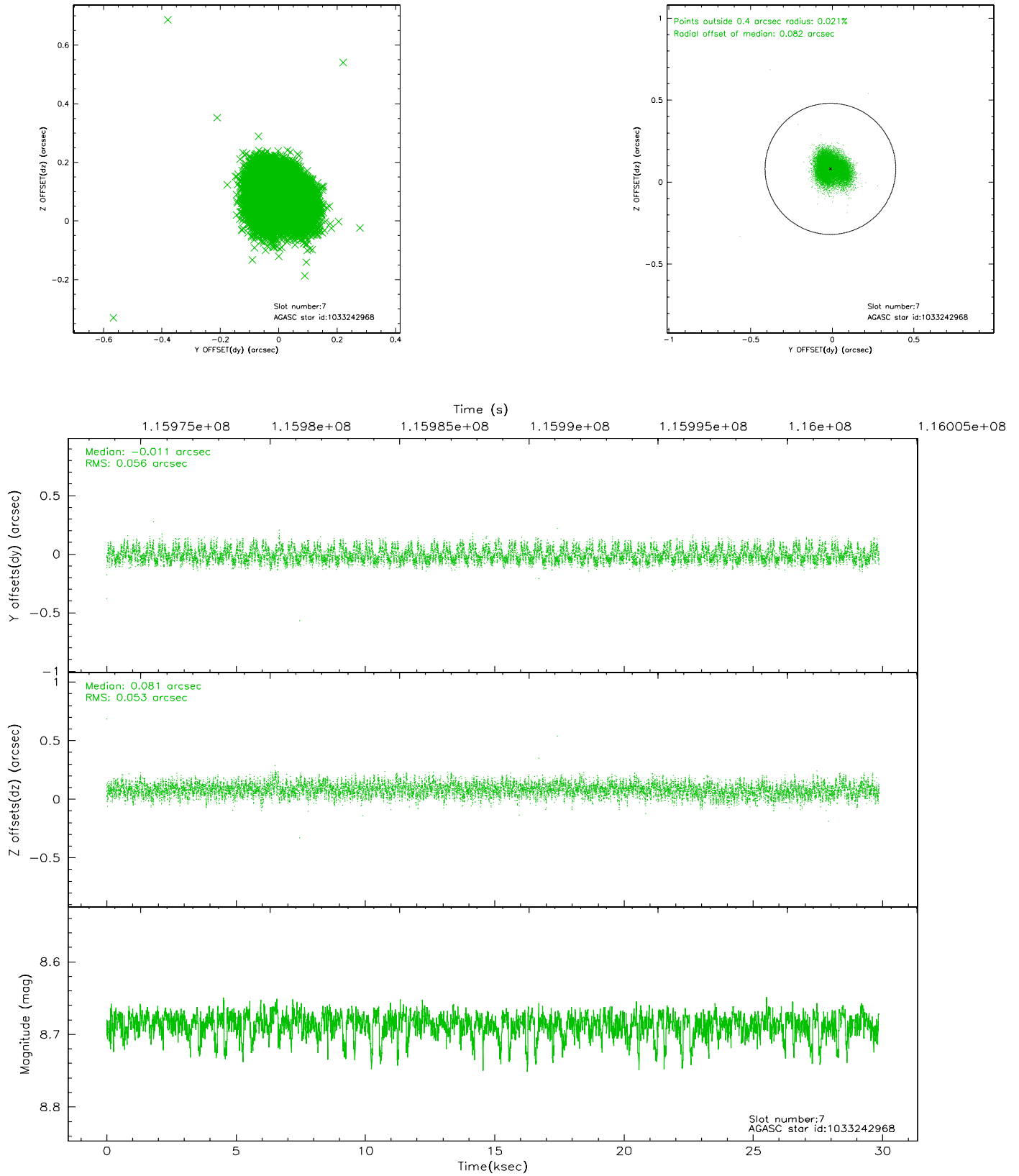
2.4.3 Slot 5



2.4.4 Slot 6

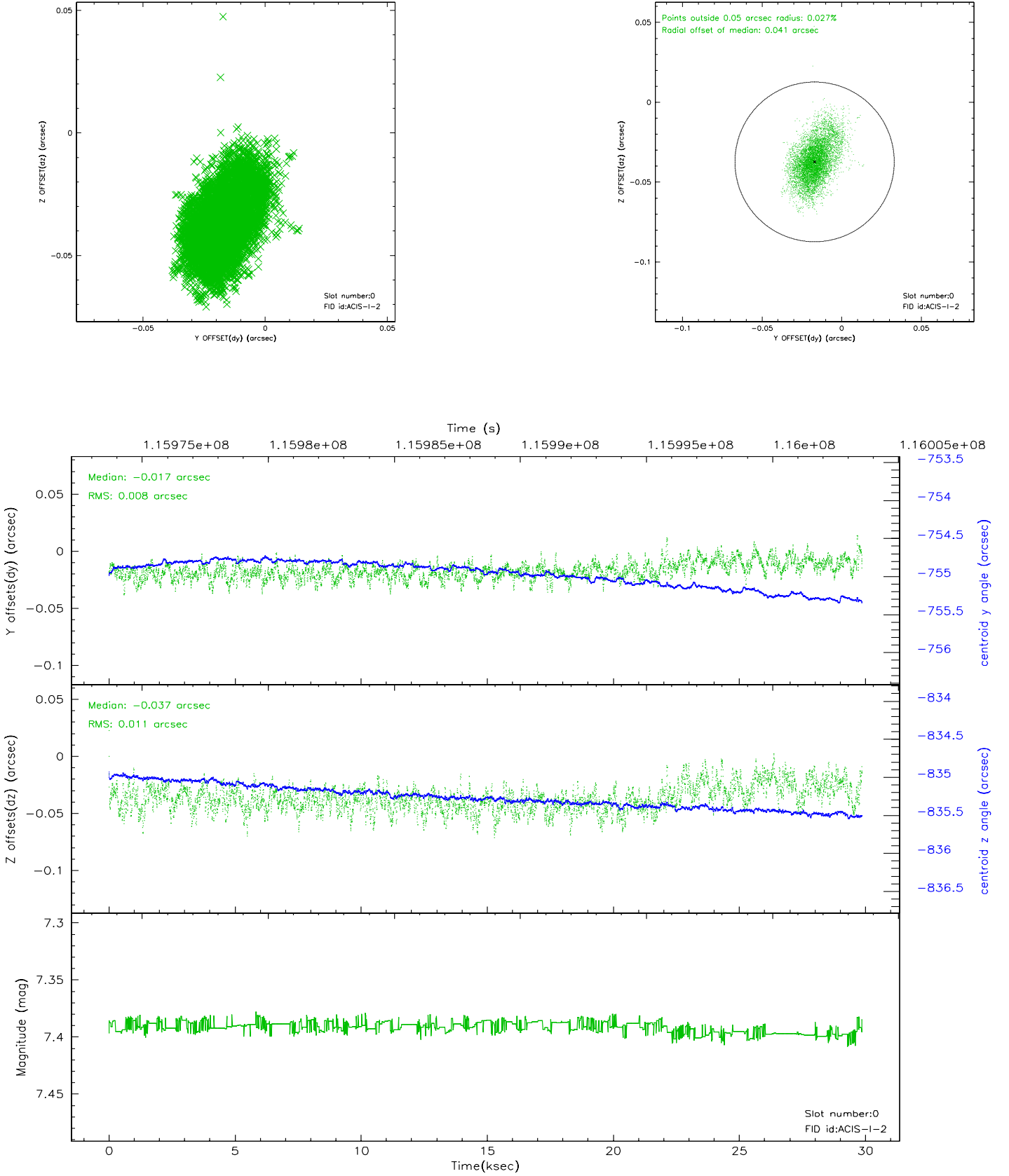


2.4.5 Slot 7

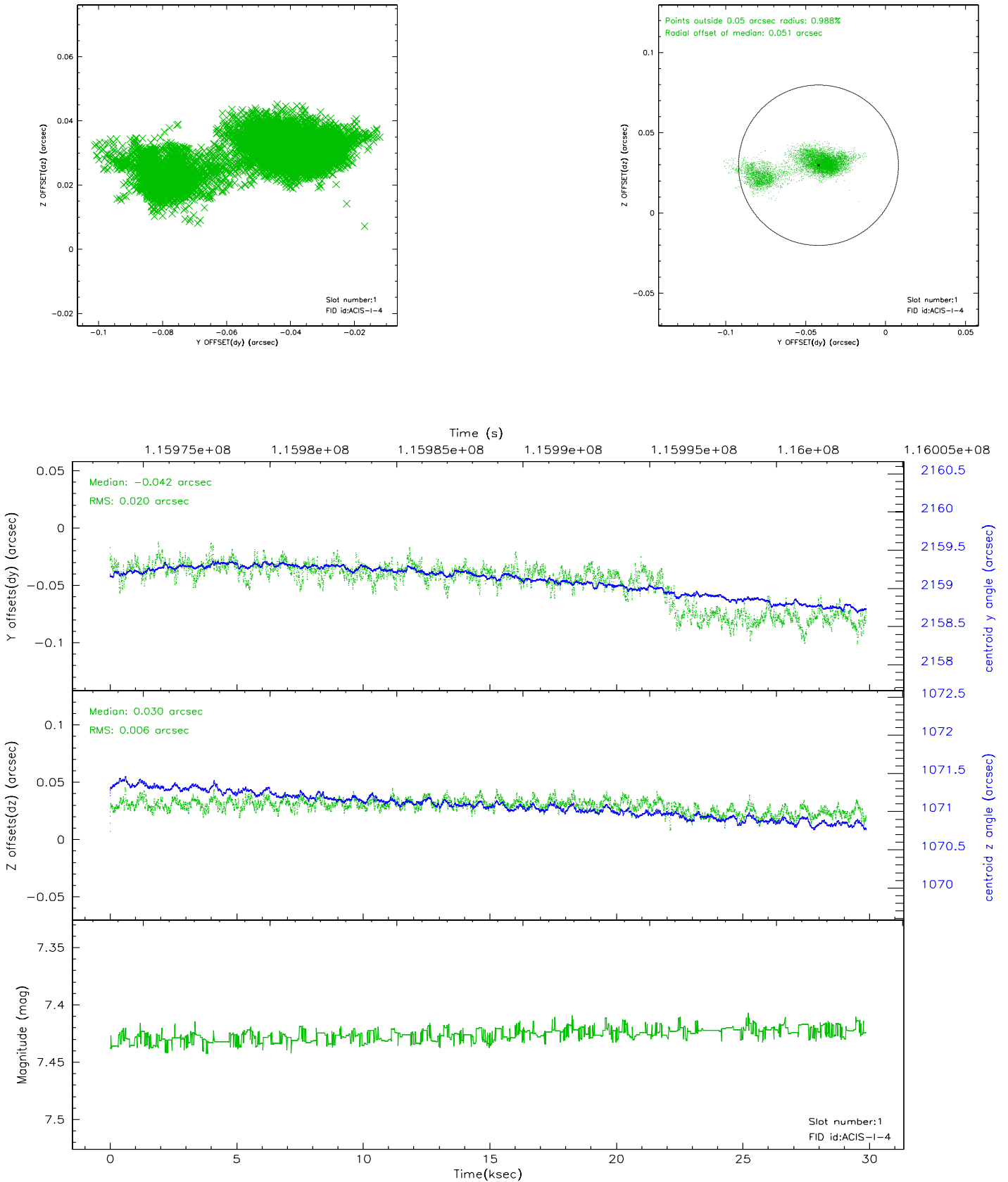


2.5 FID Slots

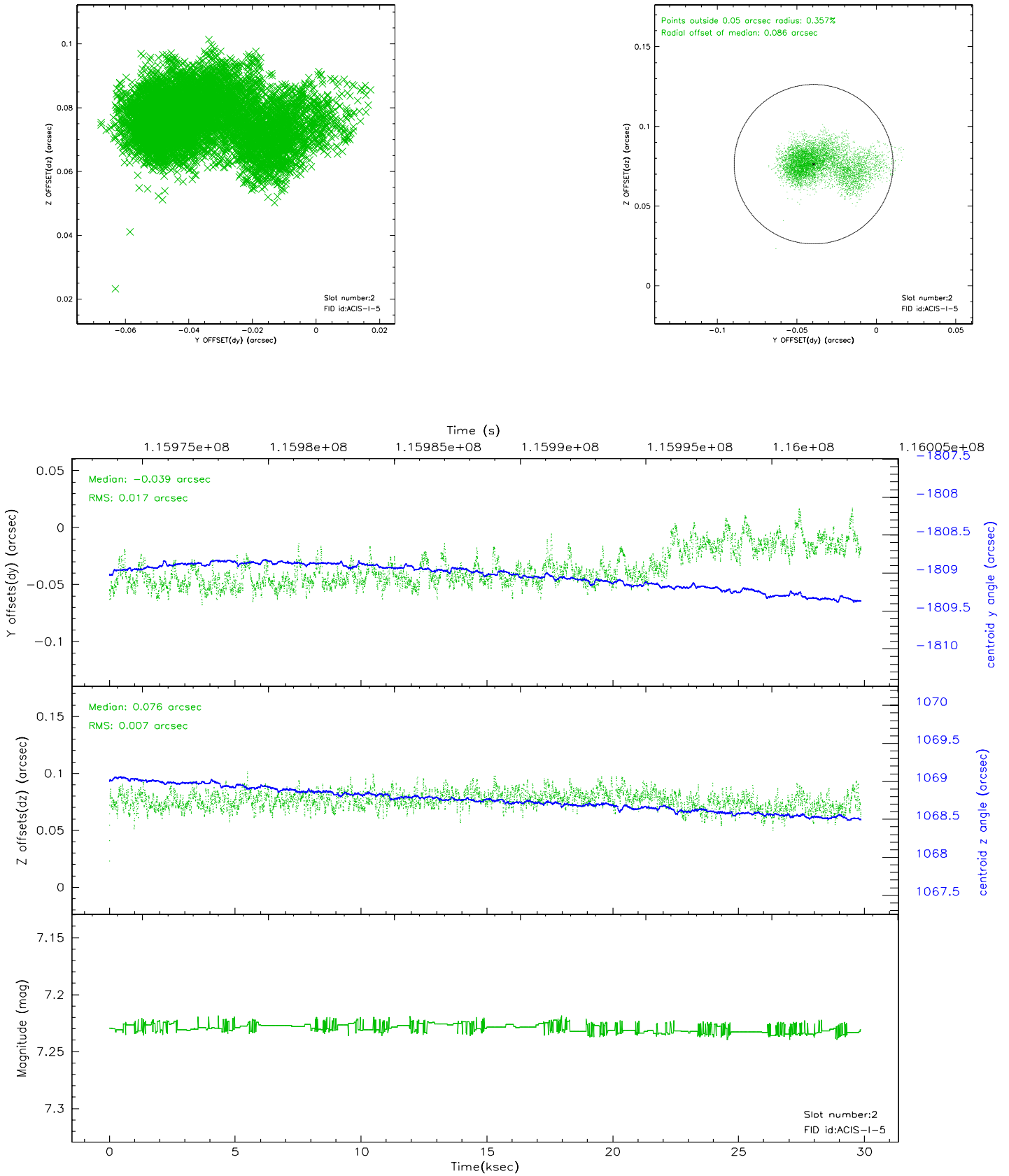
2.5.1 Slot 0



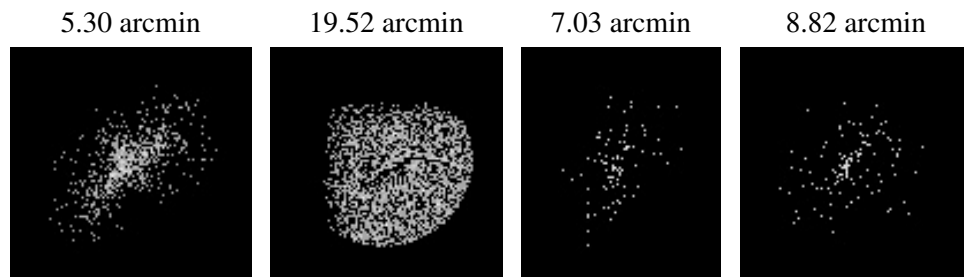
2.5.2 Slot 1



2.5.3 Slot 2



3 Point Sources



A Summary

A.1 Status

V&V Scientist	Beth Sundheim
V&V Date (YYYY-MM-DD)	2007.01.03
V&V Edition	1
V&V Disposition and Status	OK
V&V Charge Time	29.72

A.2 Comments