

V&V Reference Report

L2 ASCDS Version : 7.6.9

Observation 1924 - L2 Version 001
Chandra X-Ray Center

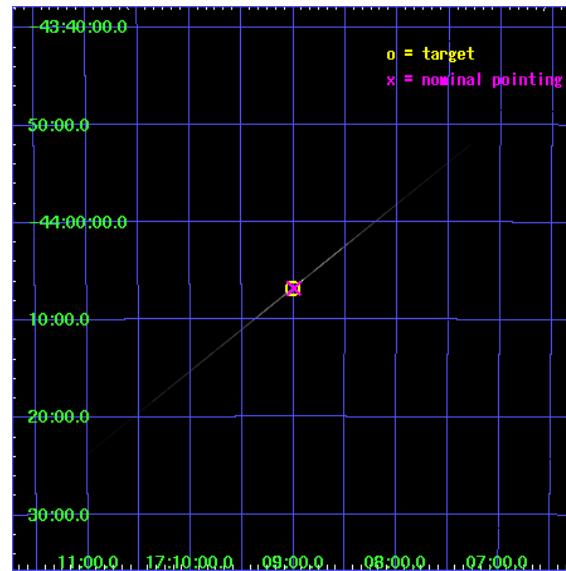
L2 Processing Date : Dec 8 2006

Contents

1	Front	2
2	OBI	3
2.1	OBI	3
2.1.1	Images	3
2.1.2	Parameters	4
2.1.3	Events	4
2.2	Compared Parameters	5
2.3	Aspect	6
2.4	Star Slots	9
2.4.1	Slot 3	9
2.4.2	Slot 4	10
2.4.3	Slot 5	11
2.4.4	Slot 6	12
2.4.5	Slot 7	13
2.5	FID Slots	14
2.5.1	Slot 0	14
2.5.2	Slot 1	15
2.5.3	Slot 2	16
3	Gratings	17
3.1	HEG Arm	17
3.2	MEG Arm	19
A	Summary	21
A.1	Status	21
A.2	Comments	21

1 Front

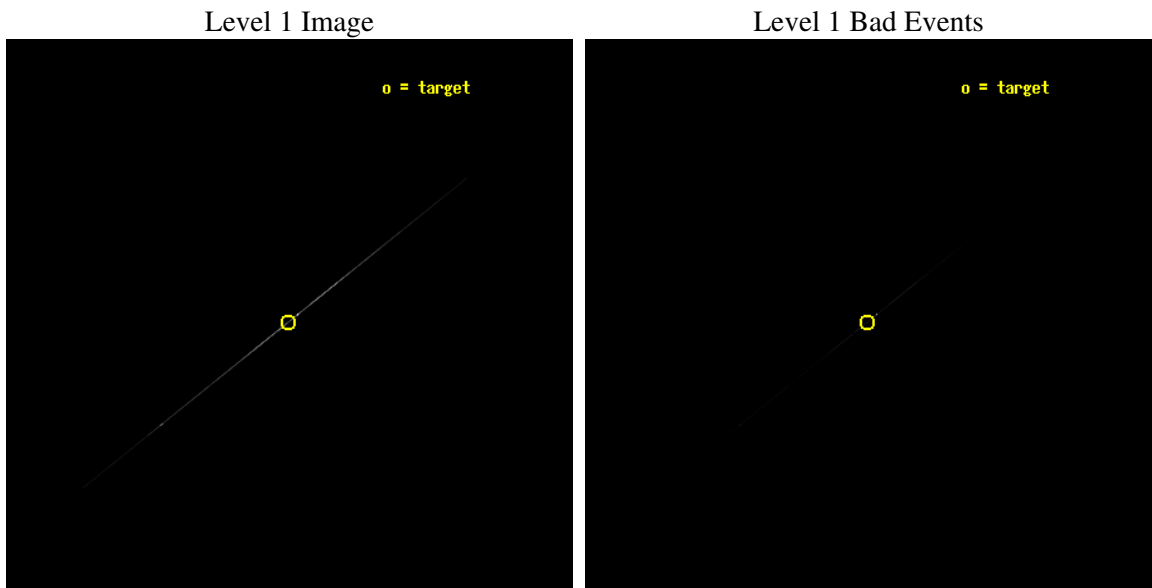
seq_num	400137
obs_id	1924
title	DETAILED STUDY OF THE IRON LINE AND LOW ENERGY FEATURES IN Z AND ATOLL SOURCES
observer	Prof. Natale Robba
object	4U1705-44
ra_targ	257.251667
dec_targ	-44.113333
ra_nom	257.24865117478
dec_nom	-44.113765748021
roll_nom	321.44107337496
revision	3
ontime	5886.5
livetime	5863.505859375
ontime4	5886.5
ontime5	5886.5
ontime6	5886.5
ontime7	5886.5
ontime8	5886.5
ontime9	5886.5
l2events	1003978



2 OBI

2.1 OBI

2.1.1 Images



2.1.2 Parameters

obi_num	0
ascdsver	7.6.9
caldsver	3.2.4
date	2006-12-08T12:59:40
revision	3

sched_exp_time	5165.000000
ontime	6214.7010790855
ontime4	6214.703021124
ontime5	6214.7024122775
ontime6	6214.7017350942
ontime7	6214.7010790855
ontime8	6214.7004302293
ontime9	6216.1592245698
l1events	1139654

2.1.3 Events

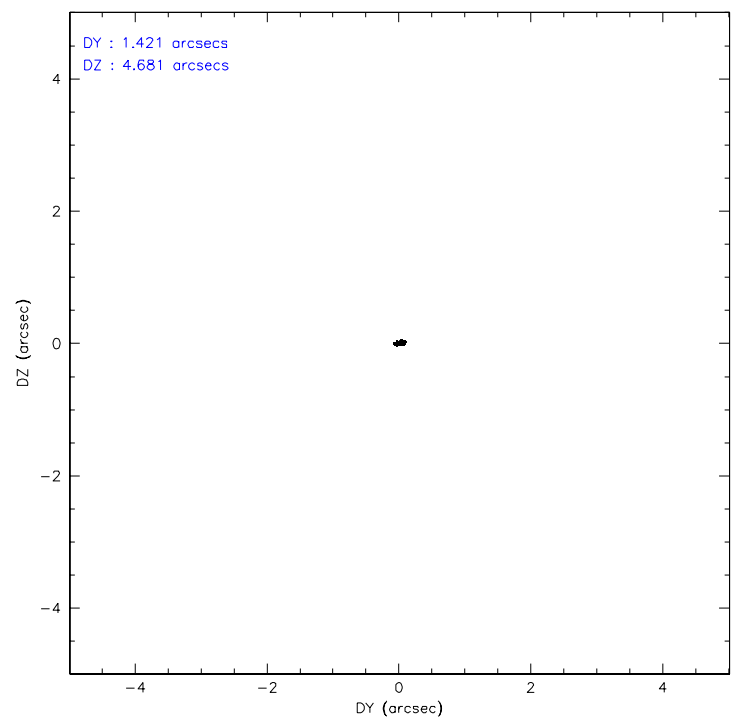
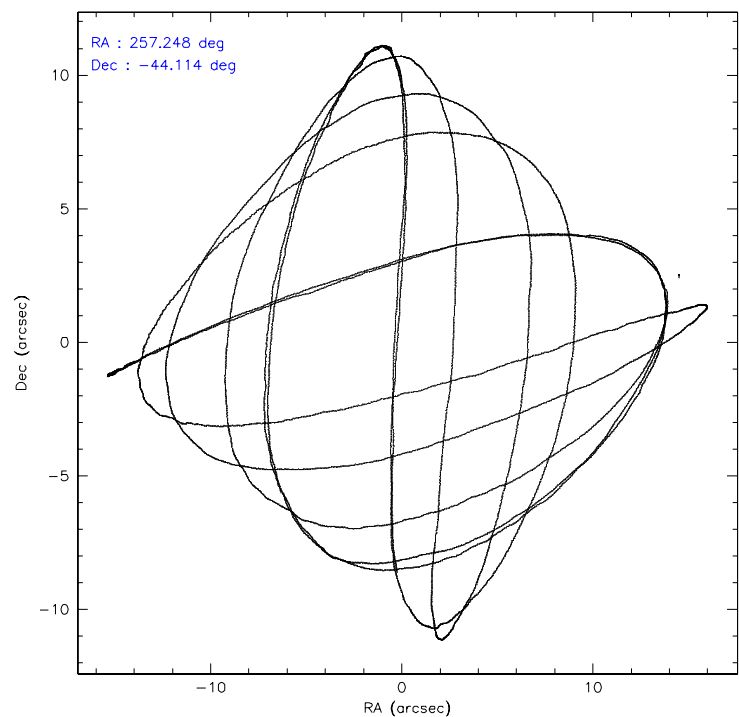
	ccd 4	ccd 5	ccd 6	ccd 7	ccd 8	ccd 9
level 1 events	13740	67387	203804	719870	113070	21783
rejected events	1978	6057	7836	59273	5544	2374
rejected %	14%	8%	3%	8%	4%	10%

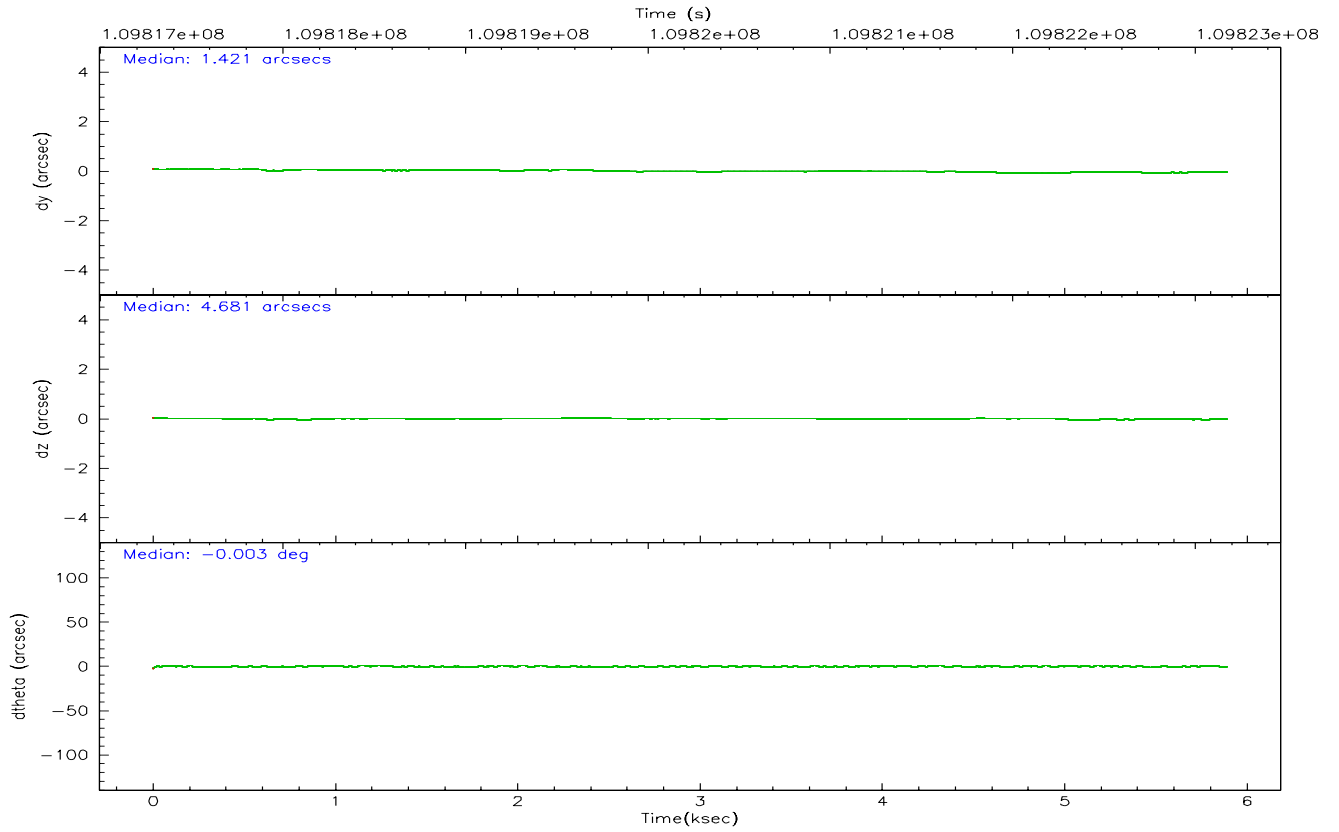
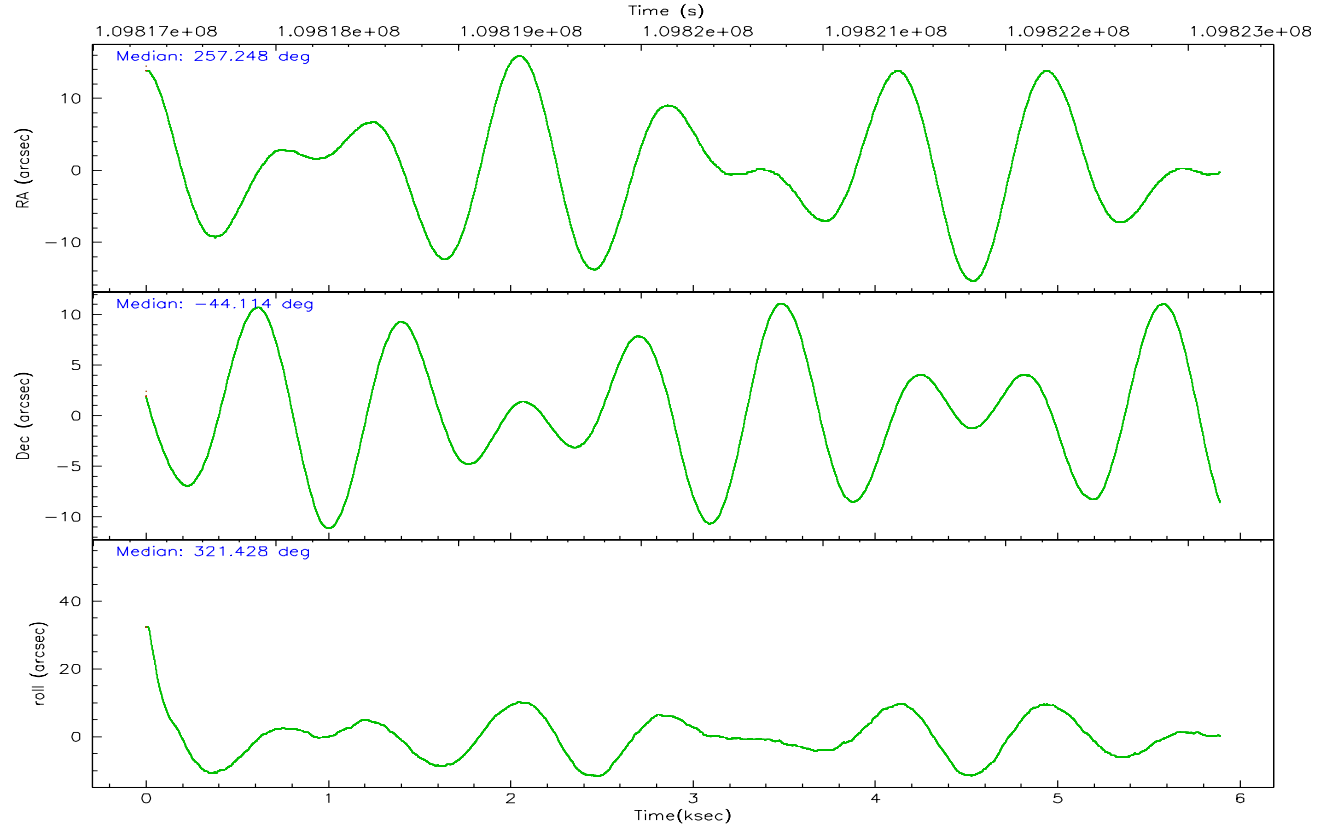
	ccd 4	ccd 5	ccd 6	ccd 7	ccd 8	ccd 9
grade 0 events	1195	15055	48177	106290	59483	4084
	8%	22%	23%	14%	52%	18%
grade 1 events	26	38	101	6487	166	33
	0%	0%	0%	0%	0%	0%
grade 2 events	6977	21332	128463	183160	34969	11067
	50%	31%	63%	25%	30%	50%
grade 3 events	1080	2090	3251	61227	4346	1103
	7%	3%	1%	8%	3%	5%
grade 4 events	1109	1995	3219	59182	4167	1144
	8%	2%	1%	8%	3%	5%
grade 5 events	1395	3533	2441	35862	2474	1621
	10%	5%	1%	4%	2%	7%
grade 6 events	1958	23344	18152	267662	7465	2731
	14%	34%	8%	37%	6%	12%
grade 7 events	0	0	0	0	0	0
	0%	0%	0%	0%	0%	0%

2.2 Compared Parameters

Parameter	Planned	Actual	Parameter	Planned	Actual
Instrument	ACIS	ACIS	Obspar format version number	6	6
Detector	ACIS-456789	ACIS-456789	Obspar file type	PREDICTED	ACTUAL
Grating	HETG	HETG	Obspar update status	NONE	UPDATED
Data mode	CC33_GRADED	CC33_GRADED	Number of optional ACIS chips dropped	0	0
Observation mode	POINTING	POINTING	On-chip summing requested	N	N
Pointing RA	257.211033	257.2486511747828	Subarray requested	NONE	NONE
Pointing Dec	-44.110019	-44.11376574802052	Alternating exposures requested	N	N
Pointing Roll	321.258210	321.4410733749611	Primary exposure time	0.000000	0
SIM focus pos (mm)	-0.684267	-0.6828225247311905			
SIM defocus (mm)	0	0.001444936568705701			
SIM translation stage pos (mm)	-182.642523	-182.6373491900168			
SIM translation stage offset (mm)	-7.49	-7.495173392990978			
Observation start time	109818015.184000	109816785.44903			
Observation start date	2001-06-25T00:59:11	2001-06-25T00:39:45			
Observation end time	109823180.184000	109824551.36183			
Observation end date	2001-06-25T02:25:16	2001-06-25T02:49:11			
Read mode	CONTINUOUS	CONTINUOUS			

2.3 Aspect



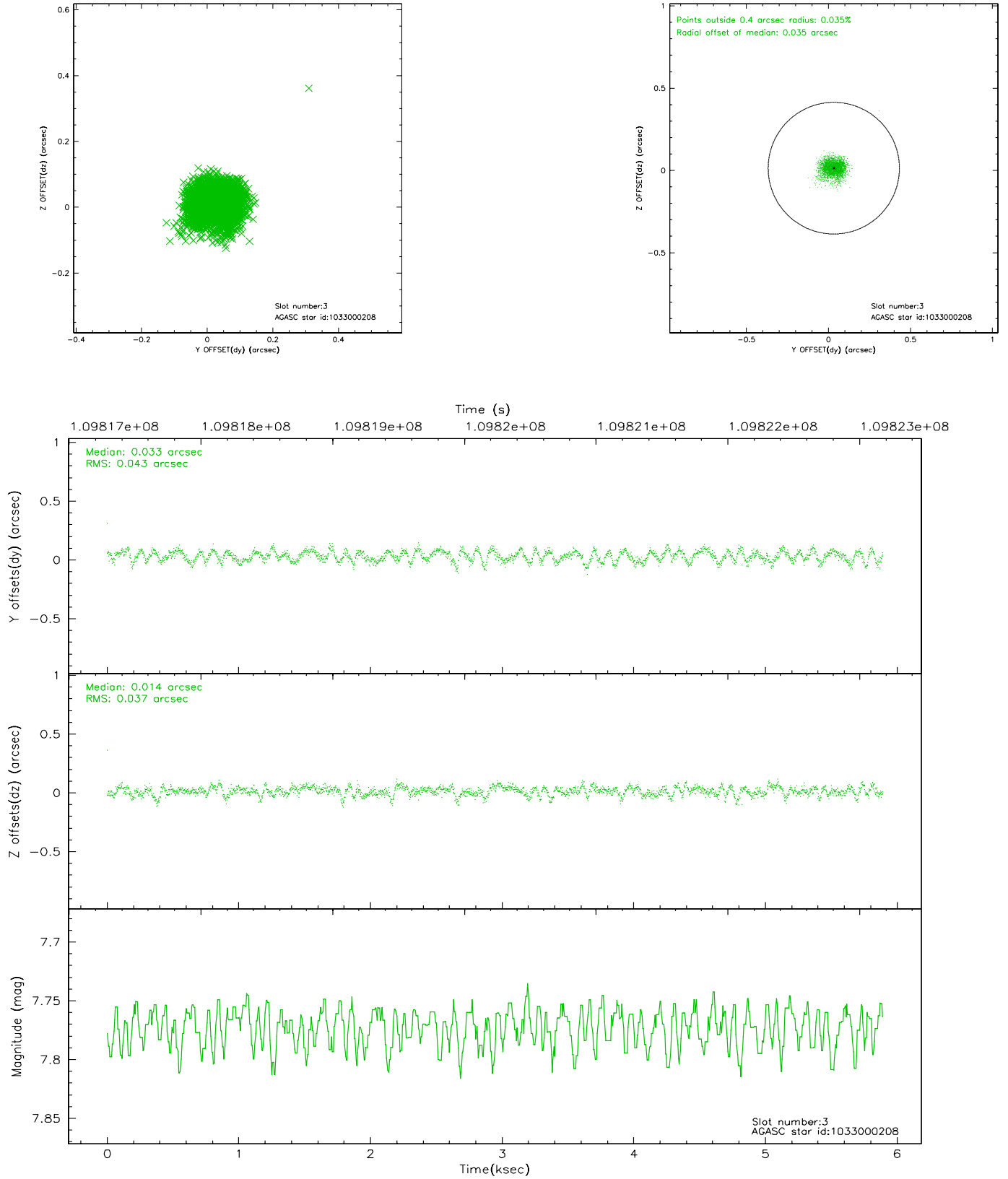


Slot Statistics

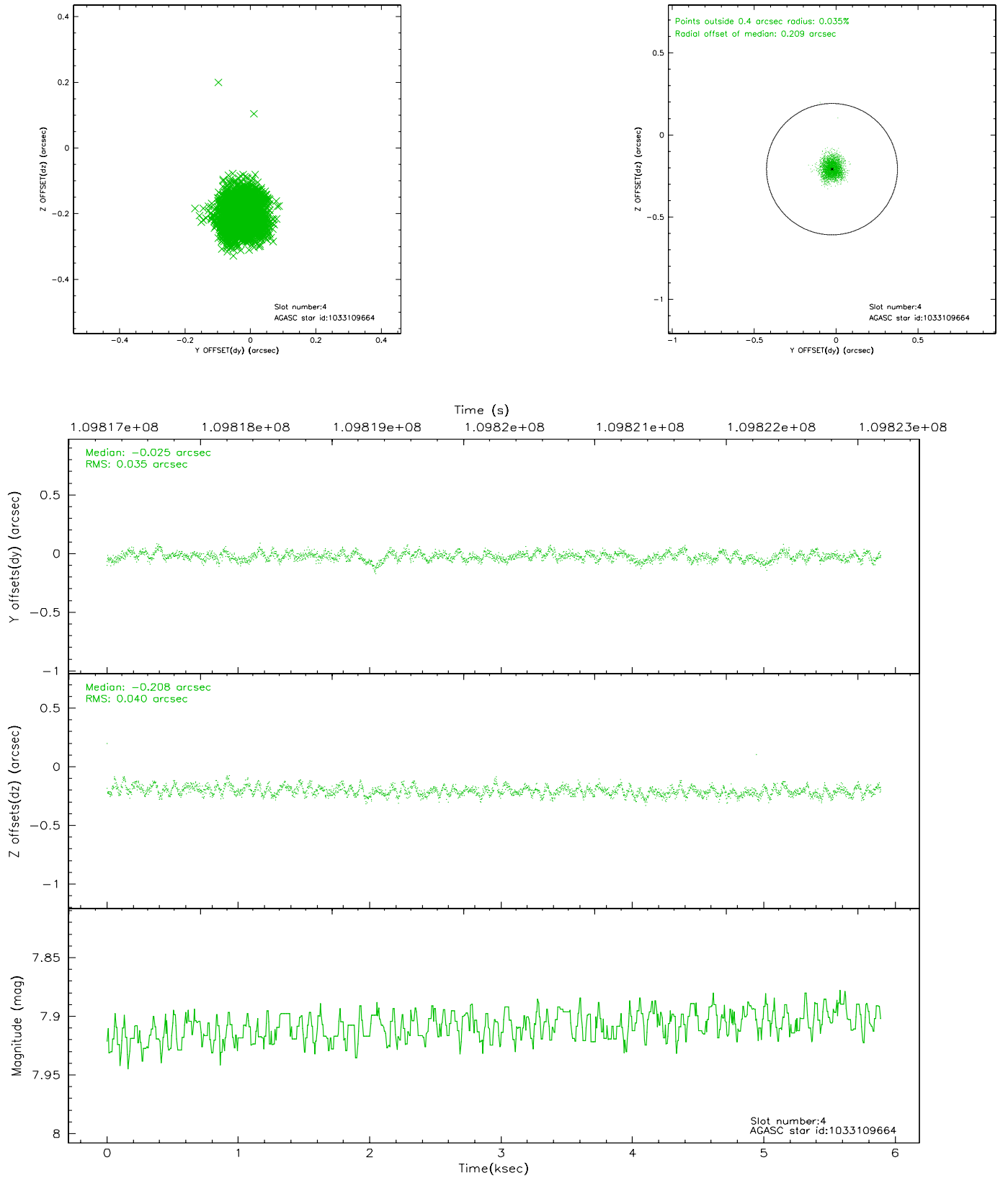
slot	status	id	mag	n_pts	med_dy	med_dz	dr1	dr2	ra	dec	mean_y	mean_z
0	FID	ACIS-S-3	7.34	1438	-0.045	0.014	0.008	0.013	0.000000	0.000000	59.64	-2009.26
1	FID	ACIS-S-4	7.18	1438	0.019	0.018	0.006	0.010	0.000000	0.000000	2159.92	27.02
2	FID	ACIS-S-5	7.23	1438	-0.002	-0.023	0.006	0.010	0.000000	0.000000	-1805.03	21.93
3	GUIDE	1033000208	7.77	2874	0.033	0.014	0.060	0.096	256.502750	-44.372681	-823.40	-1884.24
4	GUIDE	1033109664	7.91	2875	-0.025	-0.208	0.056	0.090	257.645718	-43.523560	-434.11	2353.68
5	GUIDE	1032985488	8.41	2872	-0.003	0.091	0.072	0.131	256.341779	-44.392959	-1097.83	-2202.24
6	GUIDE	1032978936	8.99	2875	-0.021	0.043	0.073	0.146	257.447182	-44.360307	1039.27	-323.38
7	GUIDE	1032979296	8.76	2874	0.006	0.069	0.095	0.149	257.257446	-43.353483	-1608.71	2200.14

2.4 Star Slots

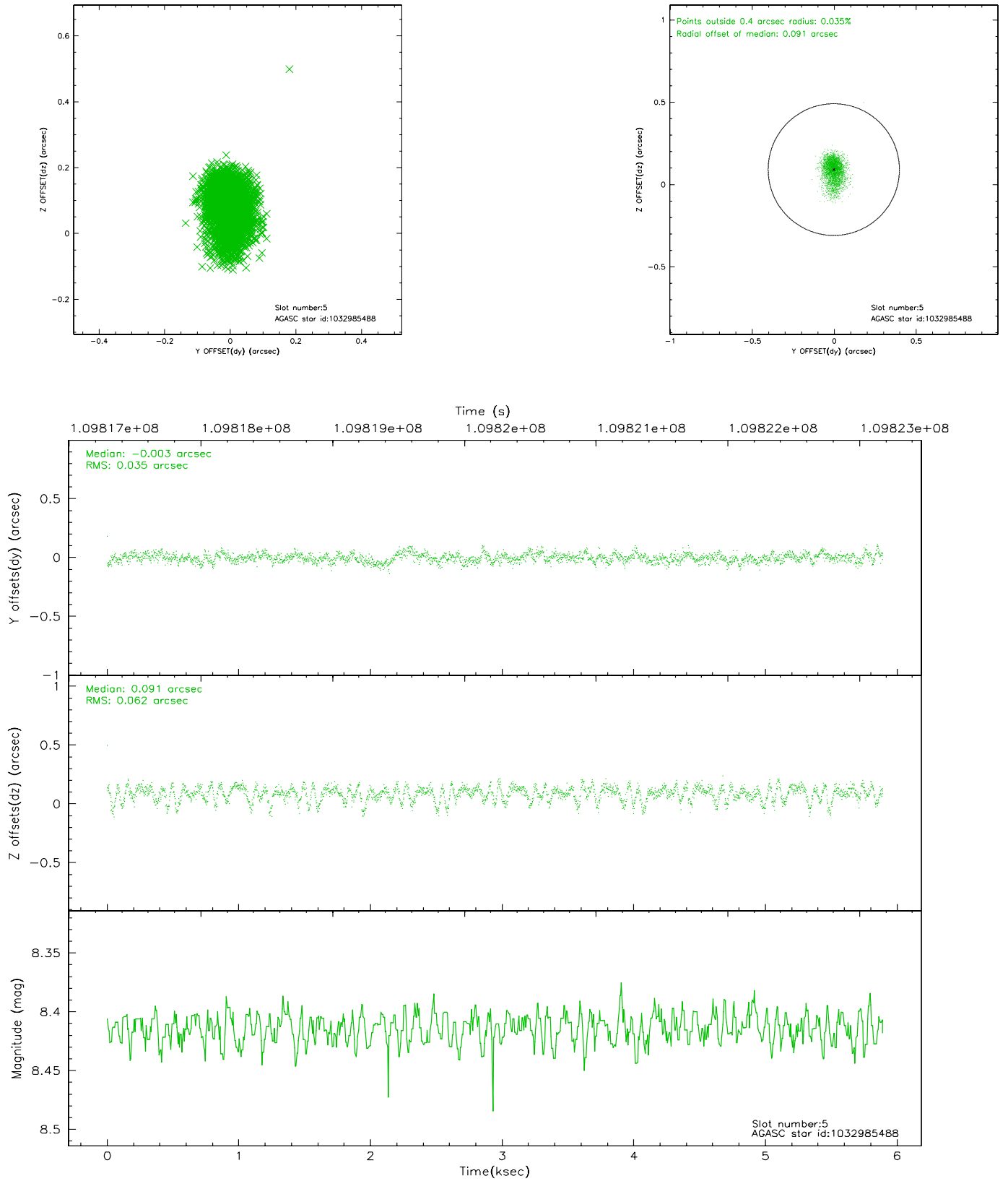
2.4.1 Slot 3



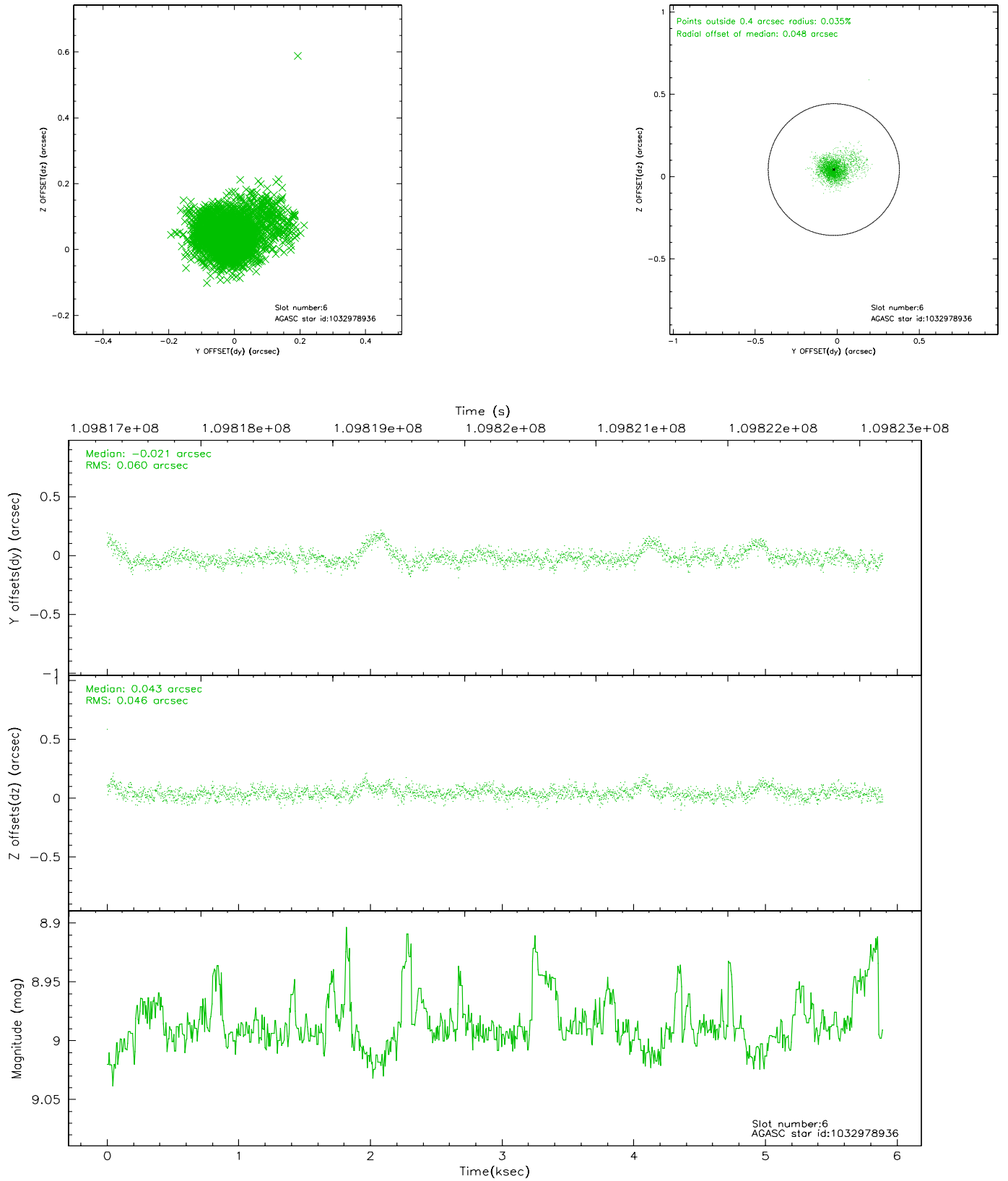
2.4.2 Slot 4



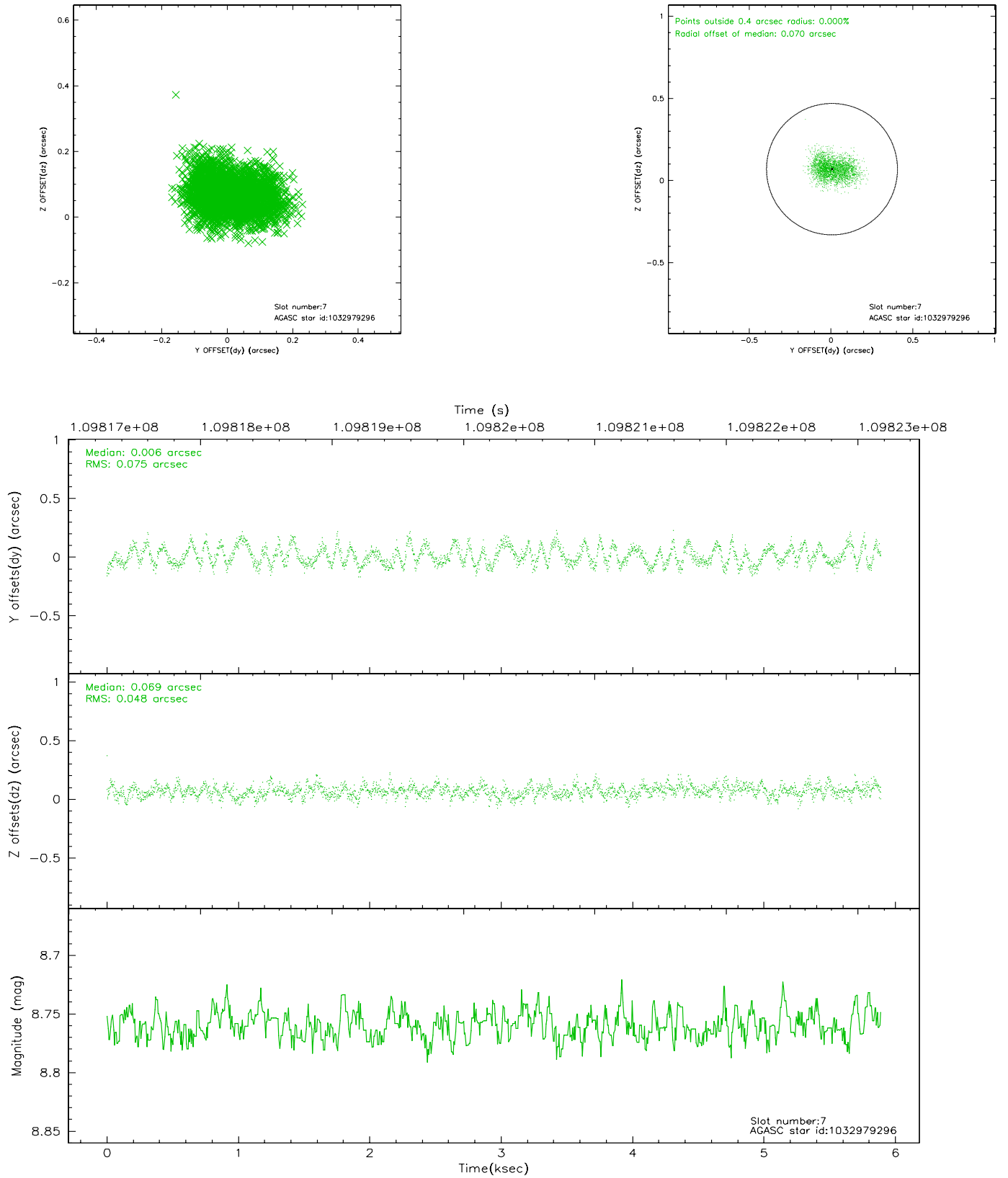
2.4.3 Slot 5



2.4.4 Slot 6

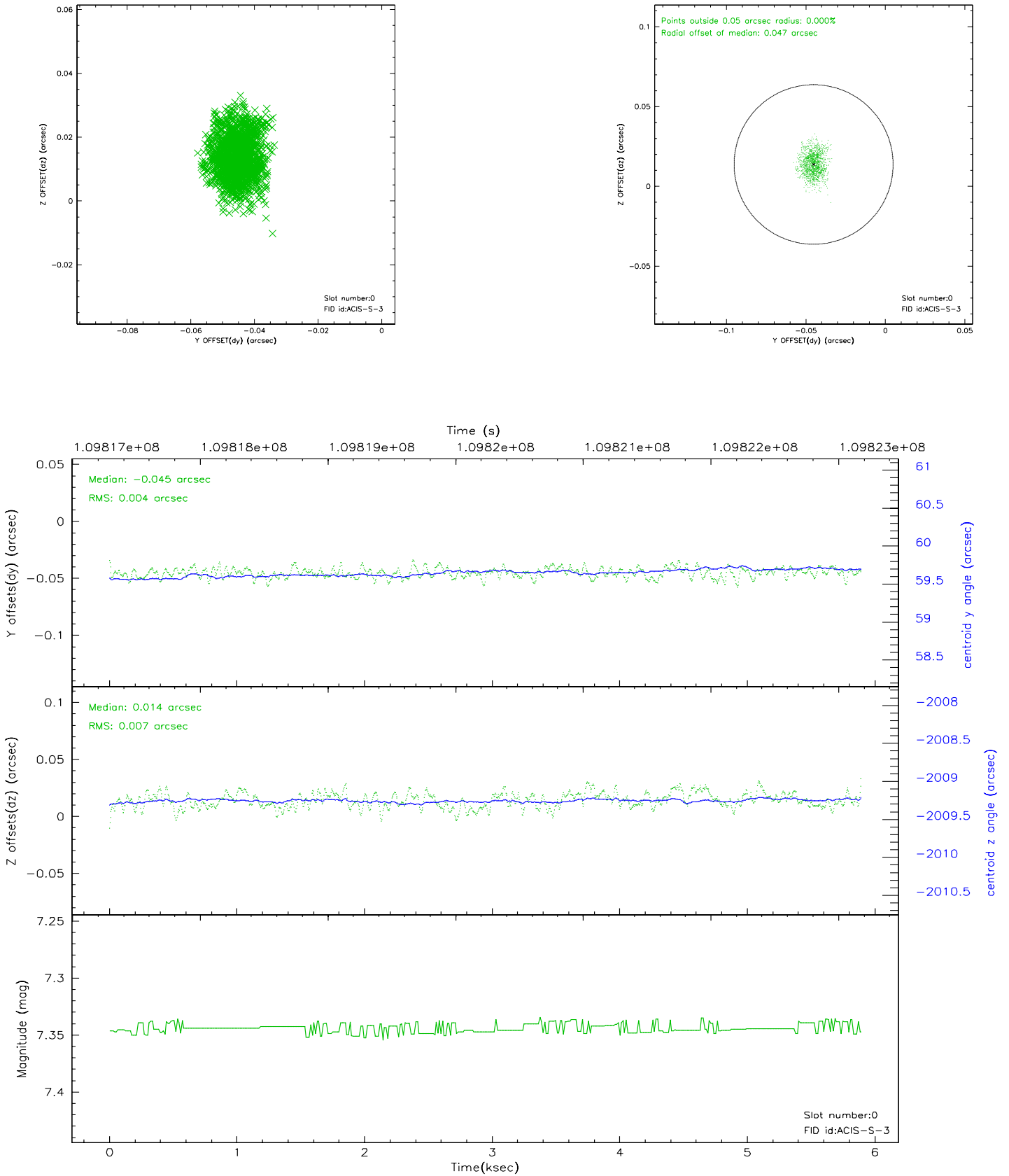


2.4.5 Slot 7

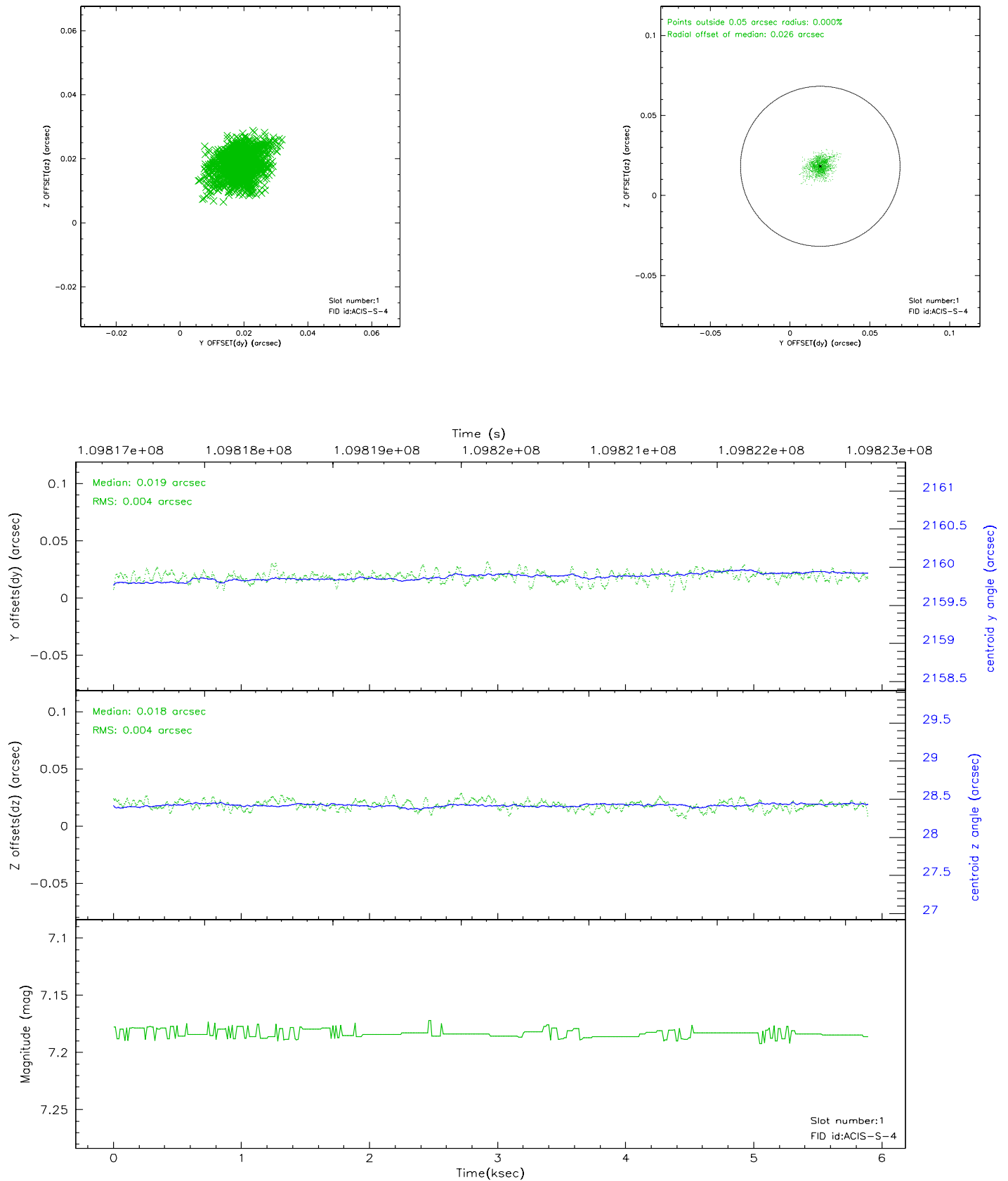


2.5 FID Slots

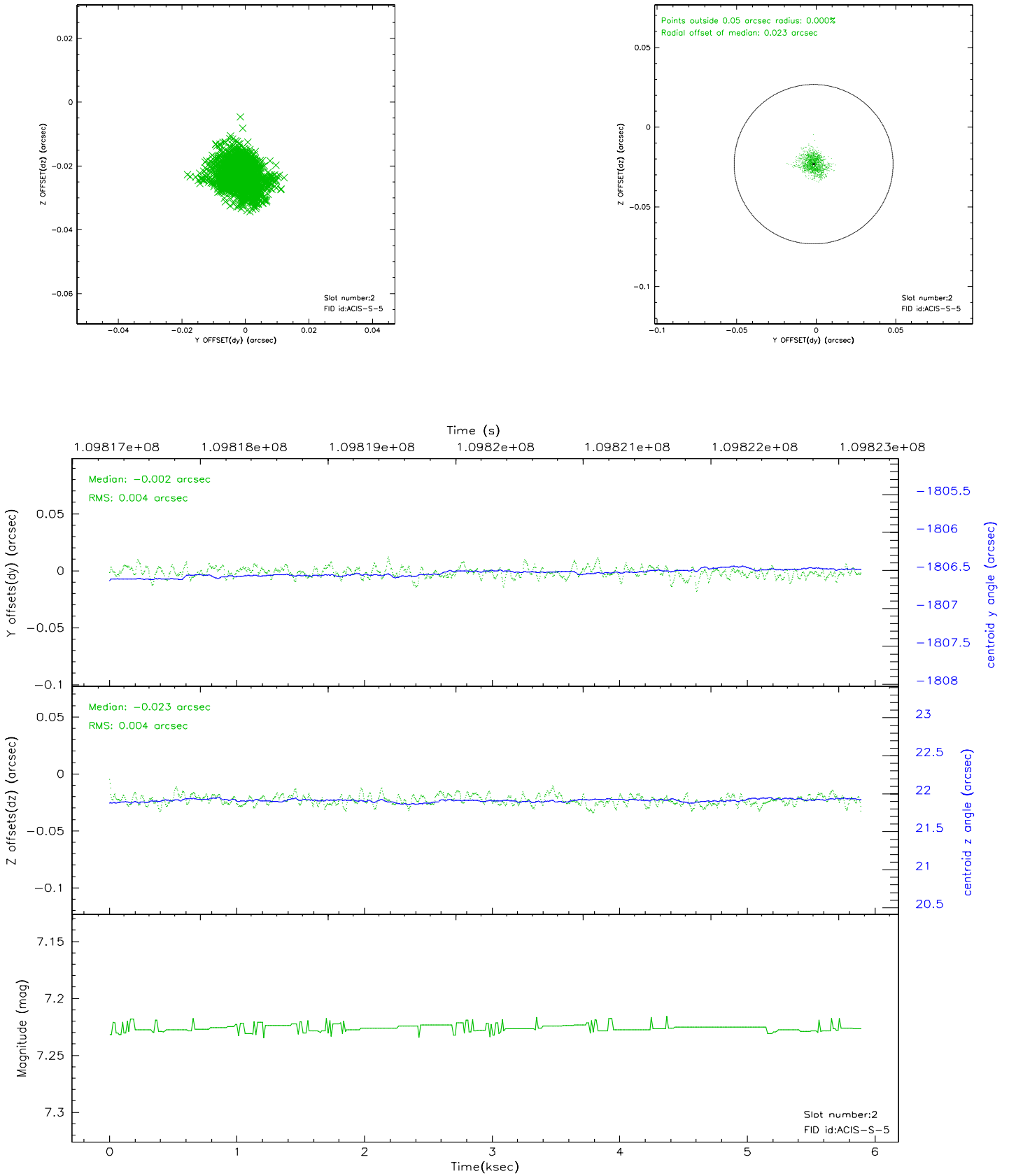
2.5.1 Slot 0



2.5.2 Slot 1

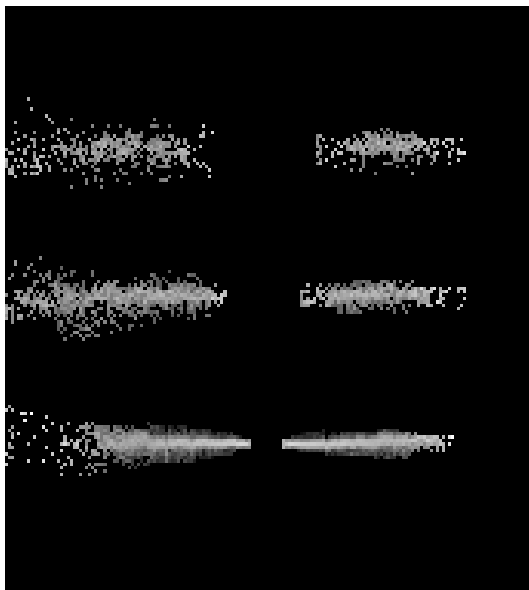


2.5.3 Slot 2



3 Gratings

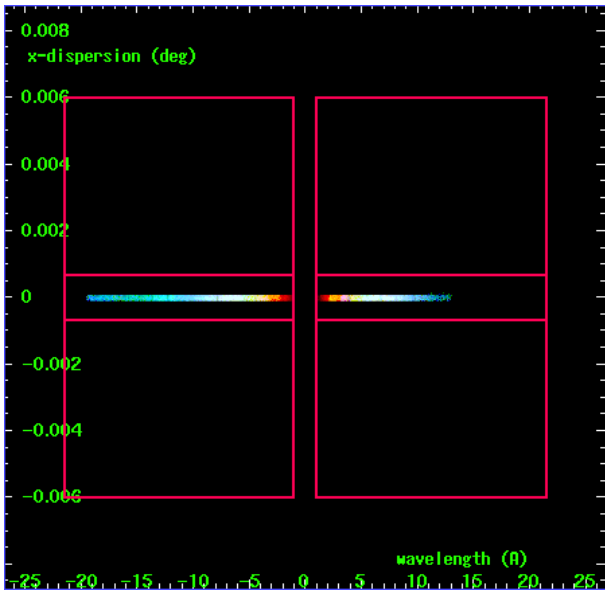
3.1 HEG Arm



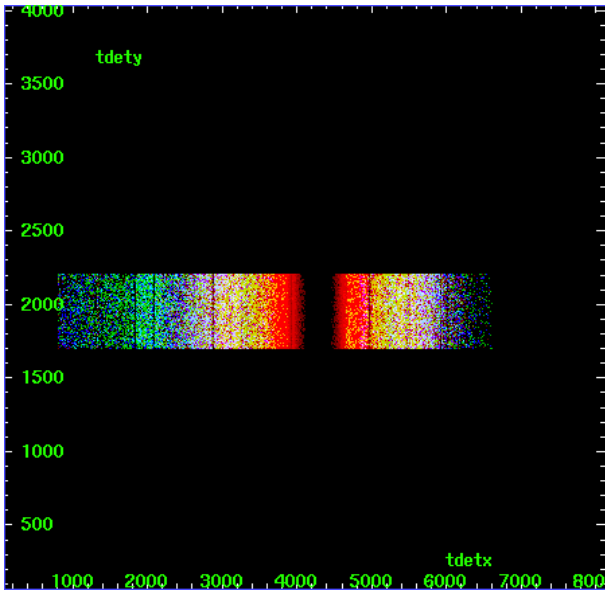
HEG Order Sort 123



HEG Order Sort ALL

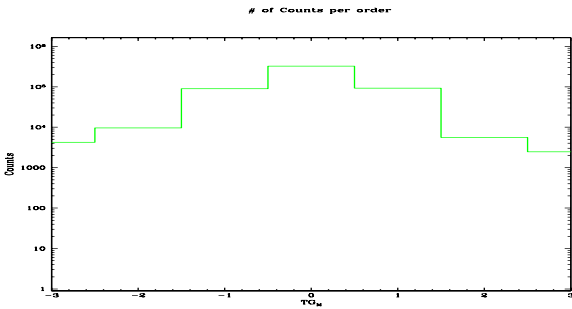


Spot Image HEG

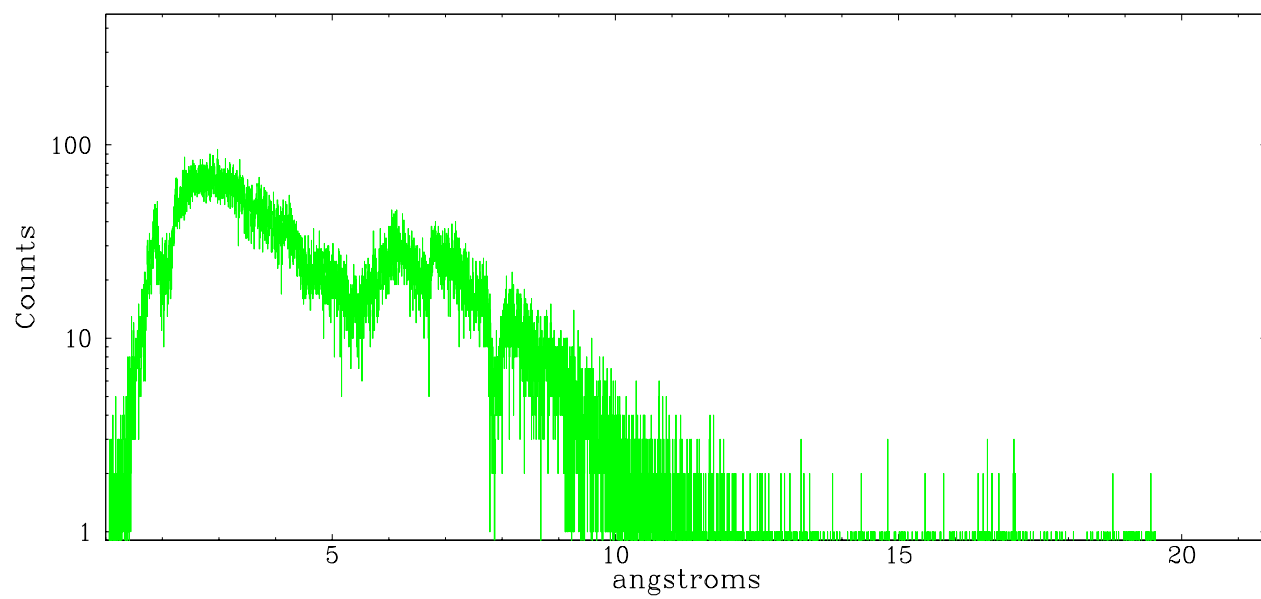


Full Detector HEG

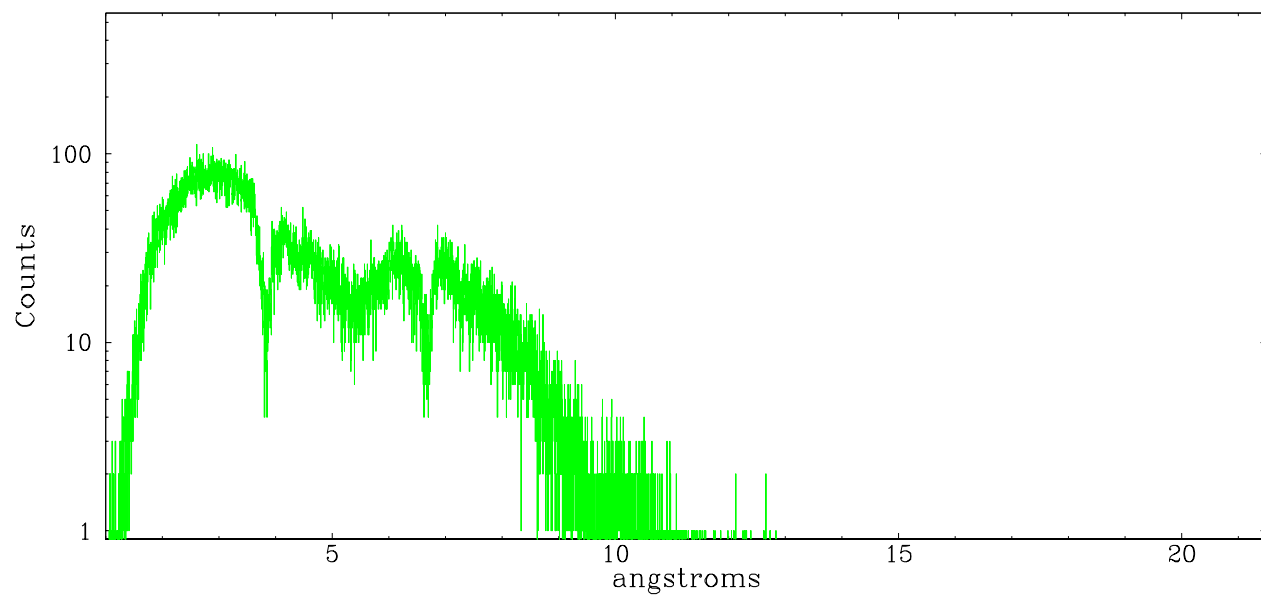
	order -3	order -2	order -1	order 0	order 1	order 2	order 3
Events	4226	9594	89533	324475	92174	5617	2471



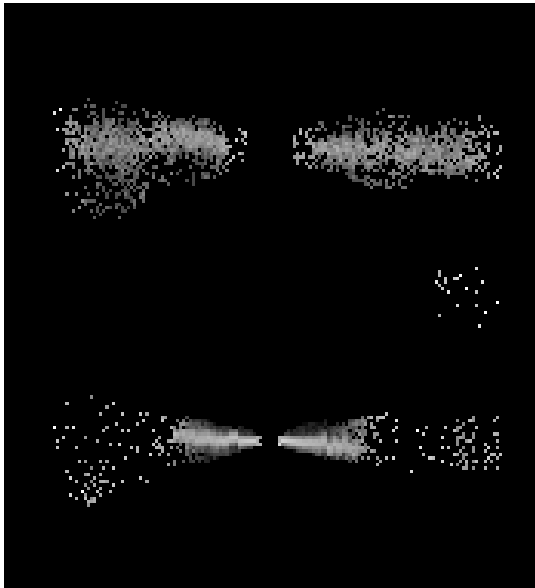
heg order -1



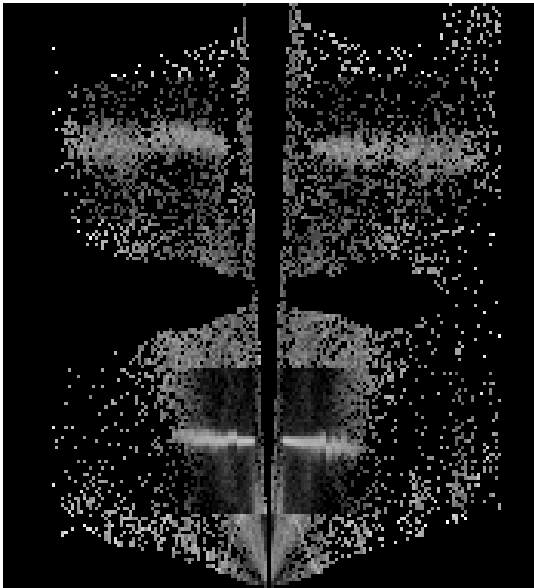
heg order +1



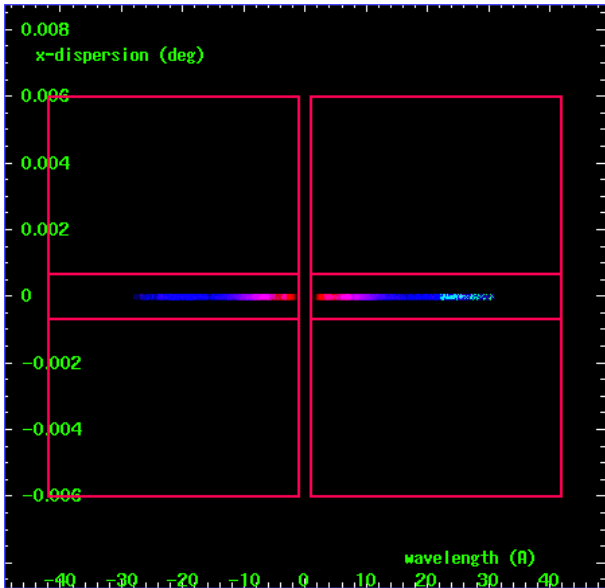
3.2 MEG Arm



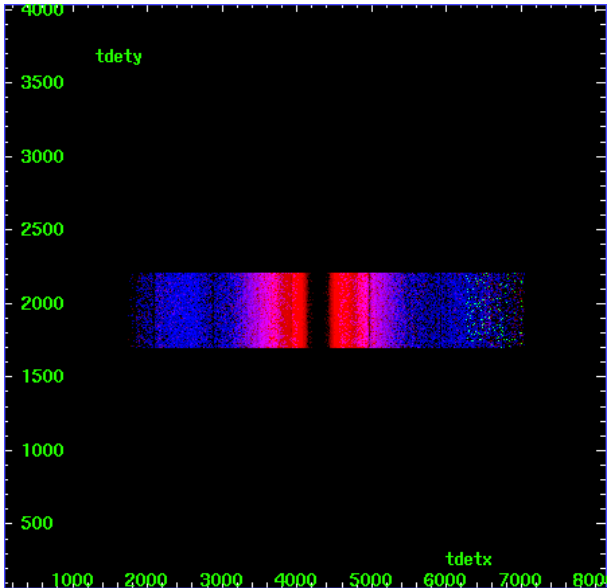
MEG Order Sort 123



MEG Order Sort ALL

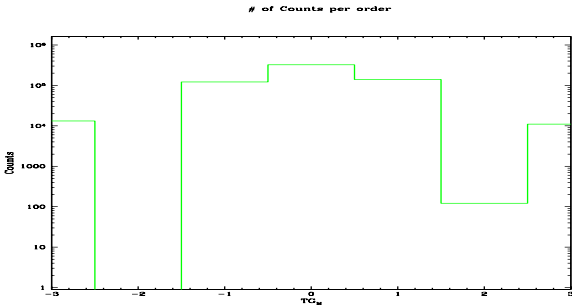


Spot Image MEG

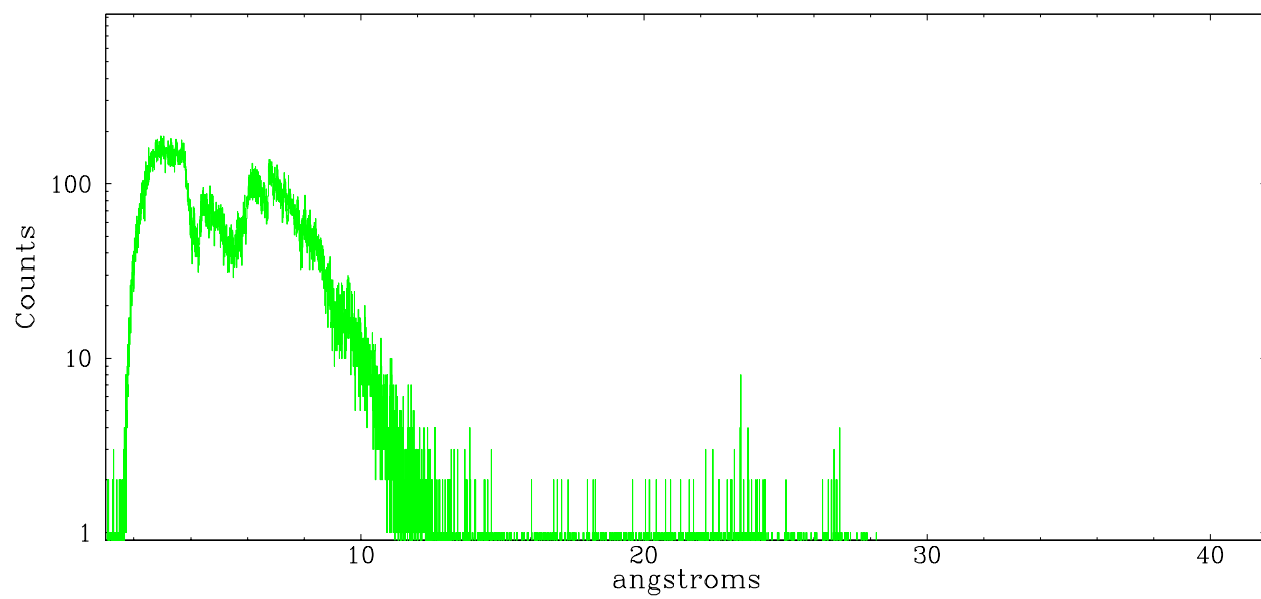


Full Detector MEG

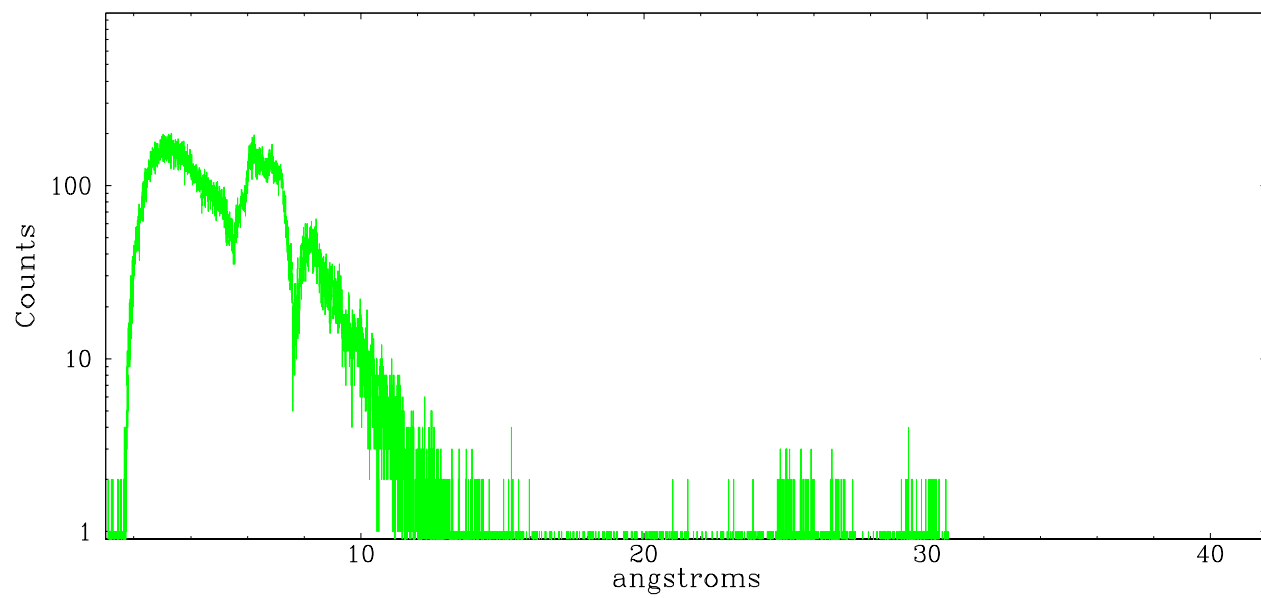
	order -3	order -2	order -1	order 0	order 1	order 2	order 3
Events	13195	0	121763	324475	139993	122	11049



meg order -1



meg order +1



A Summary

A.1 Status

V&V Scientist	David Huenemoerder
V&V Date (YYYY-MM-DD)	2006.12.14
V&V Edition	1
V&V Disposition and Status	OK
V&V Charge Time	5.886

A.2 Comments