

V&V Reference Report

L2 ASCDS Version : 8.4.5

Observation 1030 - L2 Version 4
Chandra X-Ray Center

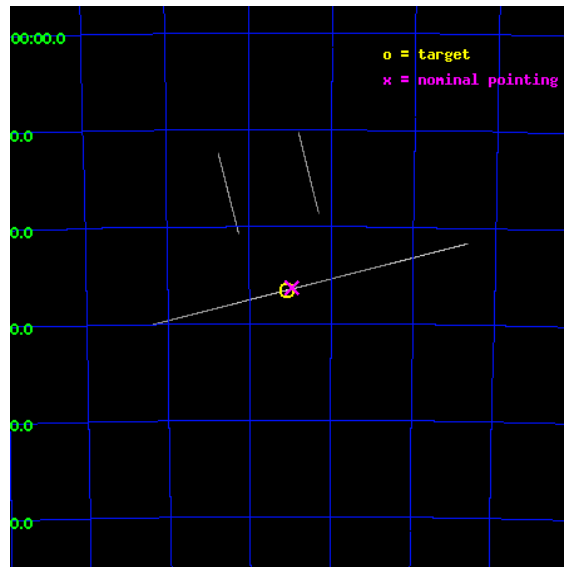
L2 Processing Date : Sep 15 2012

Contents

1	Front	2
2	OBI	3
2.1	OBI	3
2.1.1	Images	3
2.1.2	Bias	3
2.1.3	Parameters	4
2.1.4	Events	4
2.2	Compared Parameters	5
2.3	Aspect	6
2.4	Star Slots	9
2.4.1	Slot 3	9
2.4.2	Slot 4	10
2.4.3	Slot 5	11
2.4.4	Slot 6	12
2.4.5	Slot 7	13
2.5	FID Slots	14
2.5.1	Slot 0	14
2.5.2	Slot 1	15
2.5.3	Slot 2	16
A	Summary	17
A.1	Status	17
A.2	Comments	17

1 Front

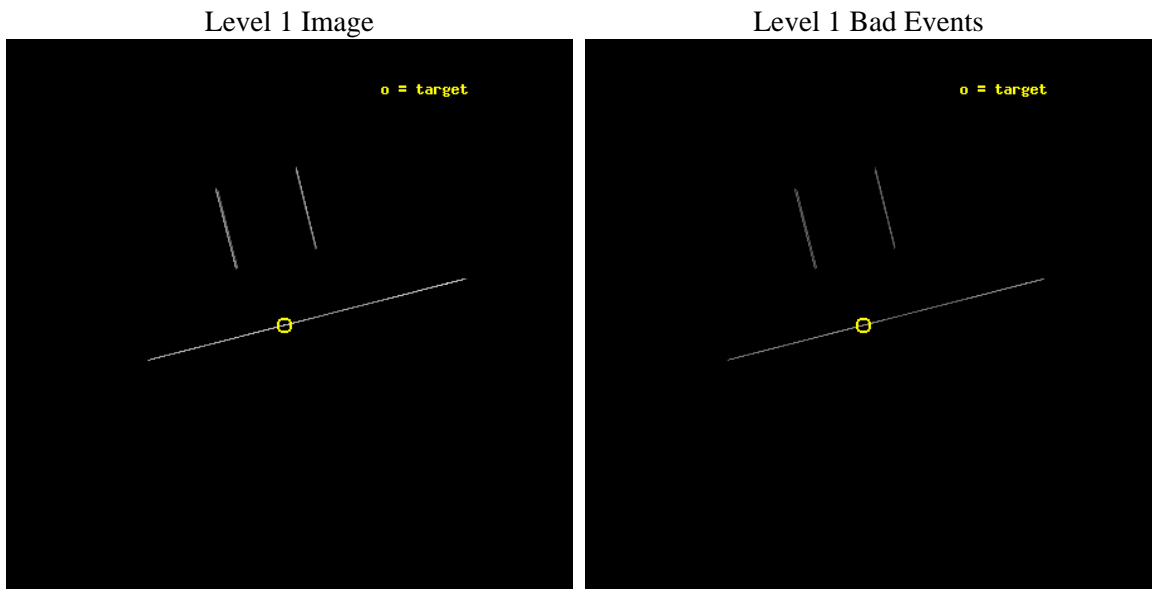
seq_num	400108	Sequence number
obs_id	1030	Observation id
title	HIGH RESOLUTION UV/X-RAY SPECTROSCOPY OF SMC X-1	Proposal title
observer	Dr. Saeqa Vrtilek	Principal investigator
object	SMC X-1	Source name
ra_targ	19.271667	Observer's specified target RA [deg]
dec_targ	-73.442944	Observer's specified target Dec [deg]
ra_nom	19.240182978035	Nominal RA [deg]
dec_nom	-73.438854294459	Nominal Dec [deg]
roll_nom	165.7413583365	Nominal Roll [deg]
revision	4	Processing version of data
ontime	6152.5	Sum of GTIs [s]
livetime	6128.466796875	Livetime [s]
ontime2	6152.5	Sum of GTIs [s]
ontime3	6152.5	Sum of GTIs [s]
ontime5	6152.5	Sum of GTIs [s]
ontime6	6152.5	Sum of GTIs [s]
ontime7	6152.5	Sum of GTIs [s]
ontime8	6152.5	Sum of GTIs [s]
l2events	70206	Number of level 2 events



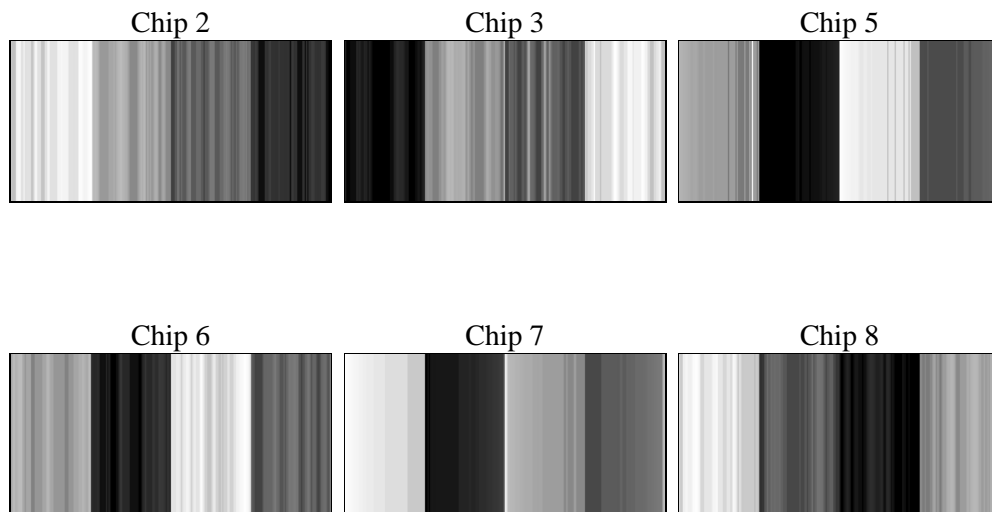
2 OBI

2.1 OBI

2.1.1 Images



2.1.2 Bias



2.1.3 Parameters

obi_num	2	Obi number	sched_exp_time	6000.000000	[s] Scheduled observation exposure time
ascdsver	8.4.5	Processing system revision	ontime	6152.5	Sum of GTIs [s]
caldsver	4.5.1.1	 	ontime2	6152.5	Sum of GTIs [s]
date	2012-09-15T15:37:08	Date and time of file creation	ontime3	6152.5	Sum of GTIs [s]
revision	4	Processing version of data	ontime5	6152.5	Sum of GTIs [s]
			ontime6	6152.5	Sum of GTIs [s]
			ontime7	6152.5	Sum of GTIs [s]
			ontime8	6152.5	Sum of GTIs [s]
			l1events	118612	Number of level 1 events

2.1.4 Events

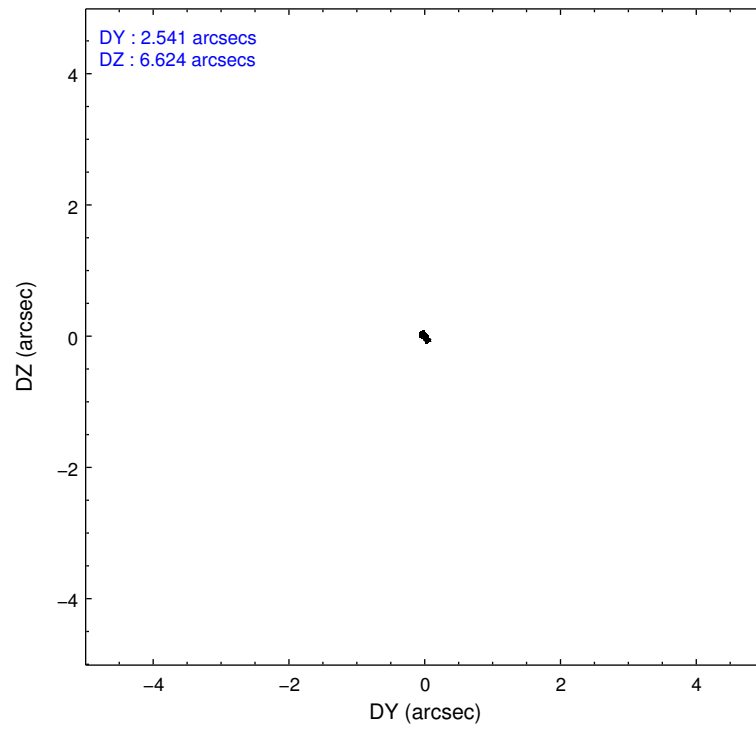
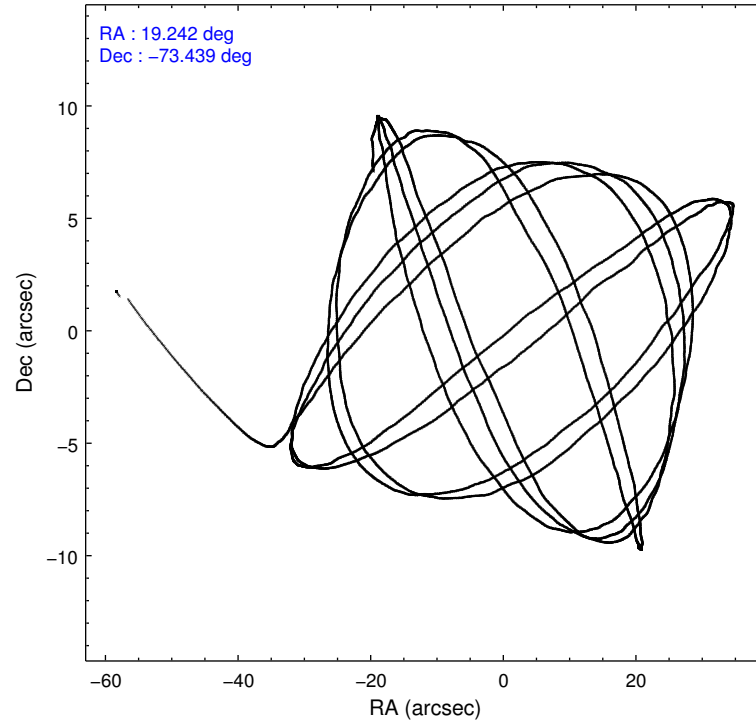
	ccd 2	ccd 3	ccd 5	ccd 6	ccd 7	ccd 8
level 1 events	8466	9432	42407	9560	30961	17786
rejected events	2198	2491	8485	2705	7577	4353
rejected %	25%	26%	20%	28%	24%	24%

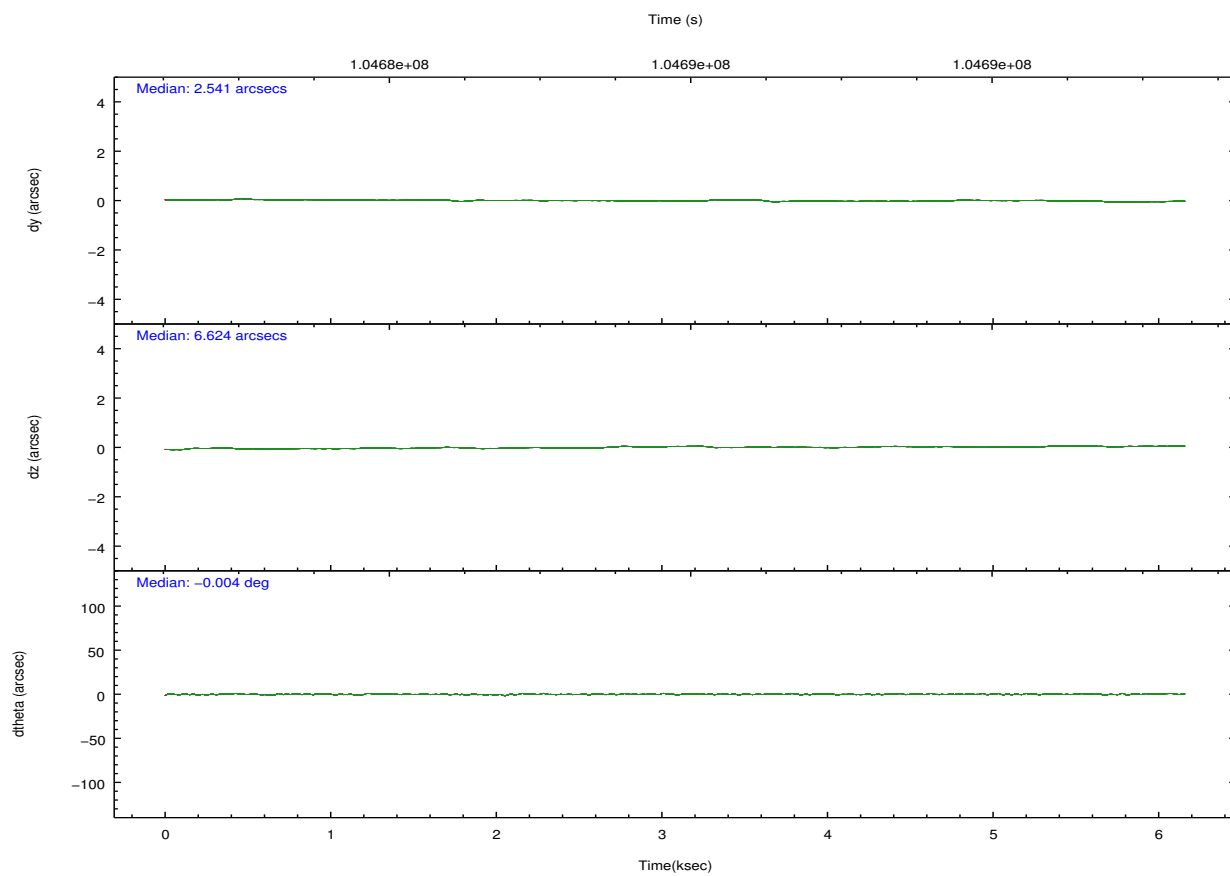
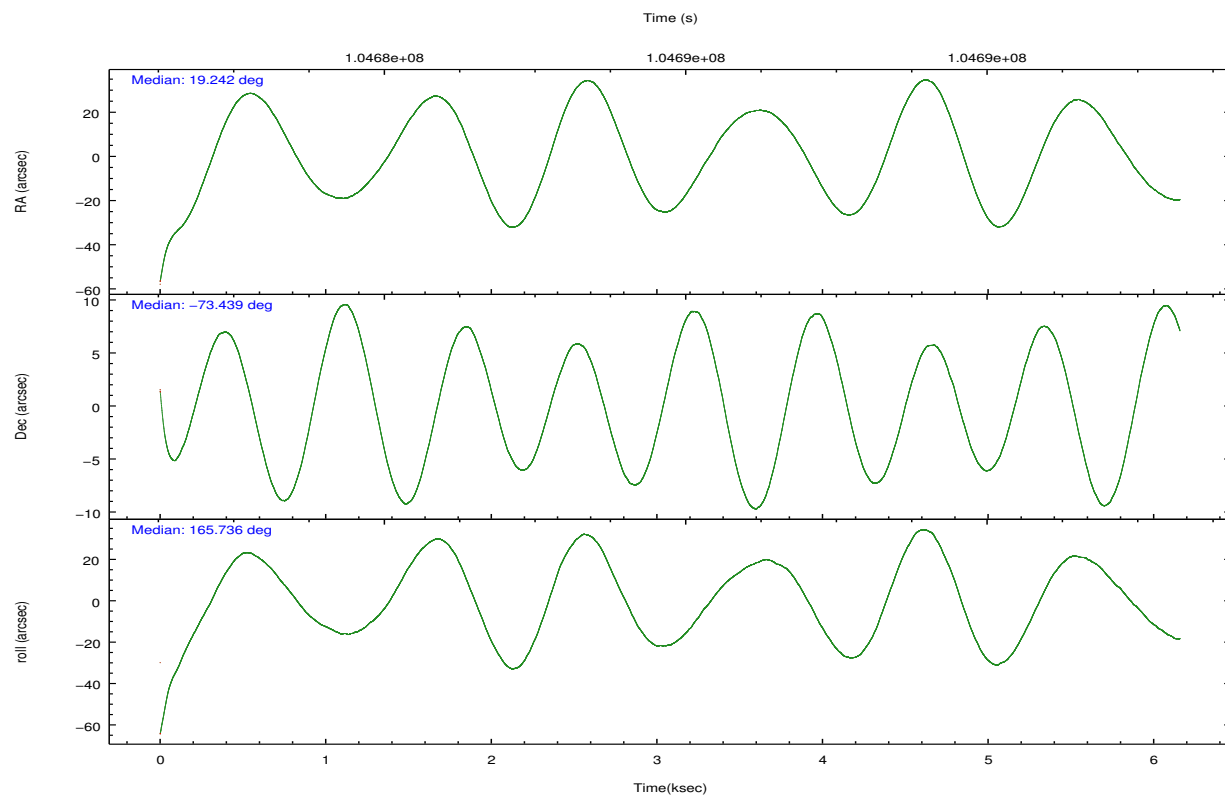
	ccd 2	ccd 3	ccd 5	ccd 6	ccd 7	ccd 8
grade 0 events	947	980	10028	887	3155	2826
	11%	10%	23%	9%	10%	15%
grade 1 events	20	34	53	34	75	58
	0%	0%	0%	0%	0%	0%
grade 2 events	2479	2795	10285	2915	6442	4832
	29%	29%	24%	30%	20%	27%
grade 3 events	1092	1254	990	1146	2206	1924
	12%	13%	2%	11%	7%	10%
grade 4 events	1096	1101	917	1114	2052	1904
	12%	11%	2%	11%	6%	10%
grade 5 events	1387	1600	3909	1754	4750	2398
	16%	16%	9%	18%	15%	13%
grade 6 events	1445	1668	16225	1710	12281	3844
	17%	17%	38%	17%	39%	21%
grade 7 events	0	0	0	0	0	0
	0%	0%	0%	0%	0%	0%

2.2 Compared Parameters

Parameter	Planned	Actual	Parameter	Planned	Actual
Instrument	ACIS	ACIS	Obspar format version number	7	7
Detector	ACIS-235678	ACIS-235678	Obspar file type	PREDICTED	ACTUAL
Grating	NONE	NONE	Obspar update status	NONE	UPDATED
Data mode	CC33_FAINT	CC33_FAINT	Number of optional ACIS chips dropped	0	0
Observation mode	POINTING	POINTING	On-chip summing requested	N	N
[deg] Pointing RA	19.332306	19.24018297803522	Subarray requested	NONE	NONE
[deg] Pointing Dec	-73.431213	-73.43885429445925	Alternating exposures requested	N	N
[deg] Pointing Roll	165.673042	165.7413583365043	[s] Primary exposure time	0.000000	0
[s] Window start time (MET)	104677759.184000	104677759.184000			
[s] Window stop time (MET)	104690036.184000	104690036.184000			
[mm] SIM focus pos	-0.684267	-0.6828225247311905			
[mm] SIM defocus	0	0.001444936568705701			
[mm] SIM translation stage pos	-190.132523	-190.1400660498719			
[mm] SIM translation stage offset	0	0.00754346686406393			
Phase constraints	Y	Y			
[d] Phase period	3.892000	3.892000			
[d] Phase epoch (MJD)	50141.466800	50141.466800			
Phase start	0.000000	0.000000			
Phase end	0.800000	0.800000			
Phase start error	0.050000	0.050000			
Phase end error	0.050000	0.050000			
[s] Observation start time (MET)	104682974.184000	104682006.74922			
Observation start date	2001-04-26T14:35:10	2001-04-26T14:20:06			
[s] Observation end time (MET)	104688974.184000	104689751.13702			

2.3 Aspect



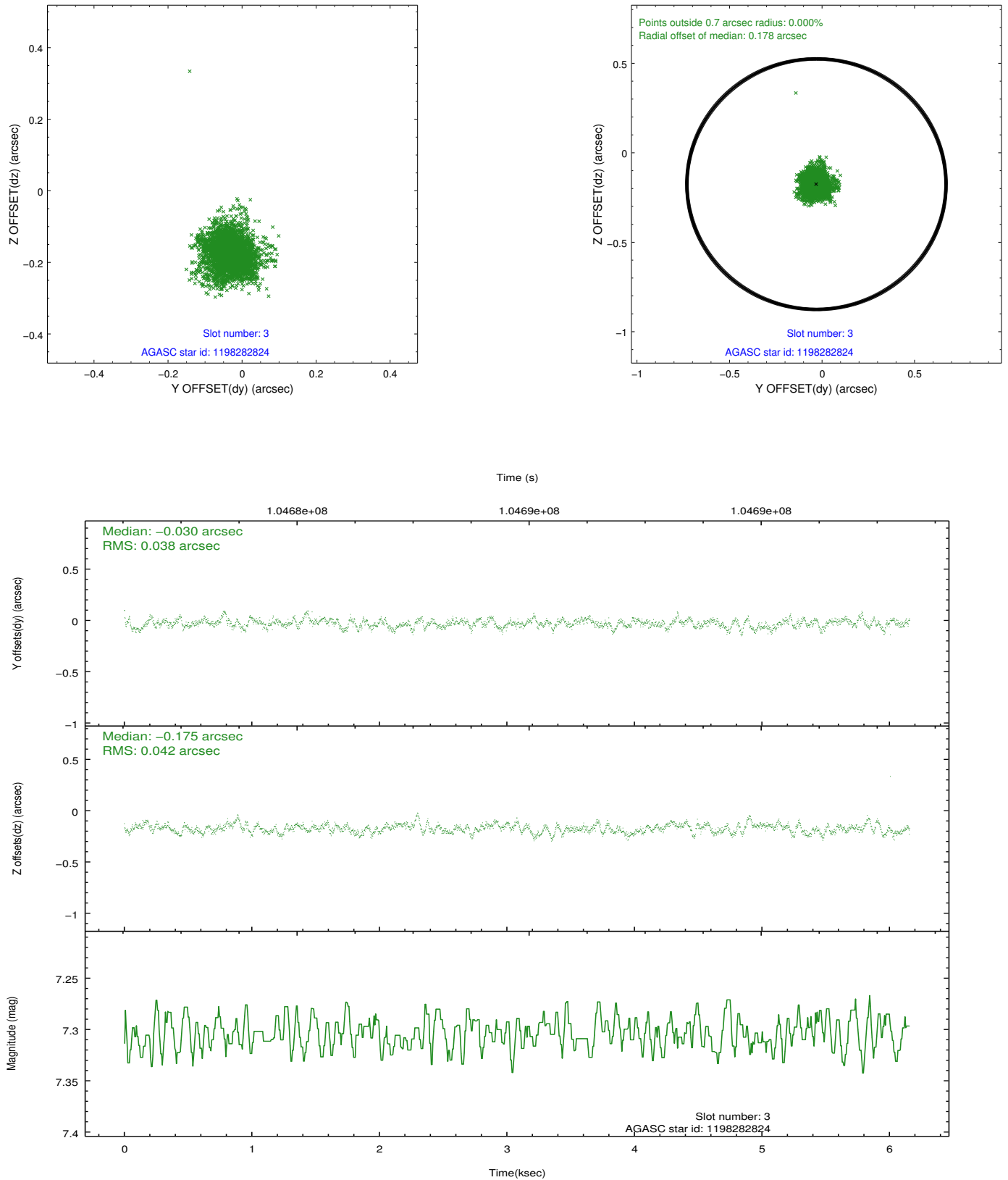


Slot Statistics

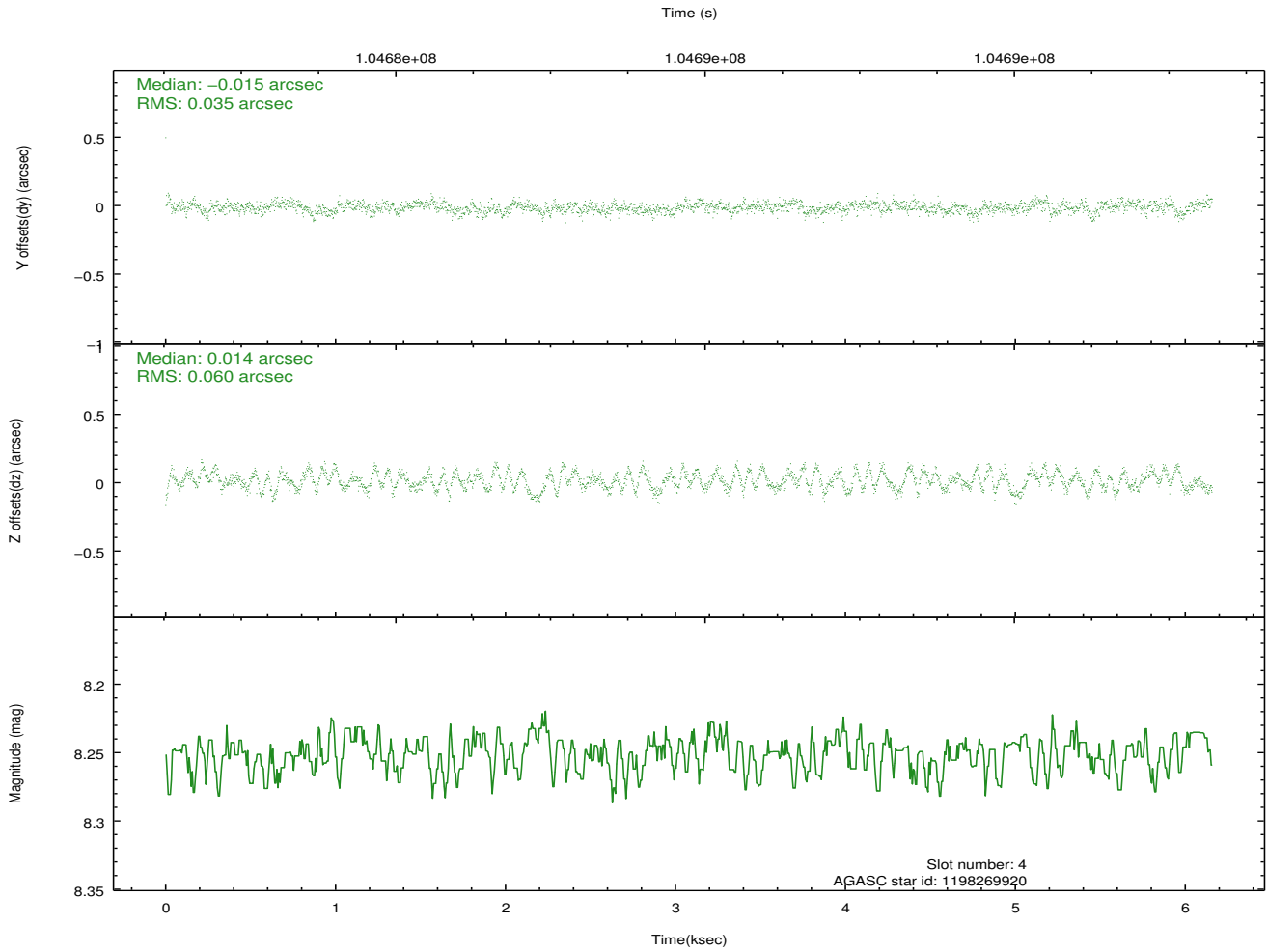
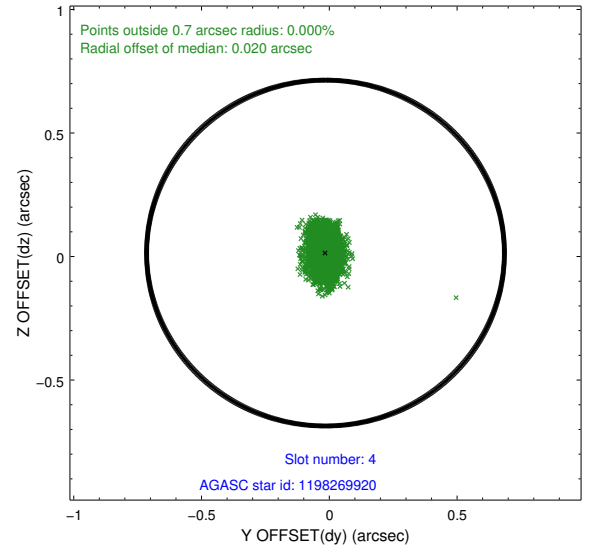
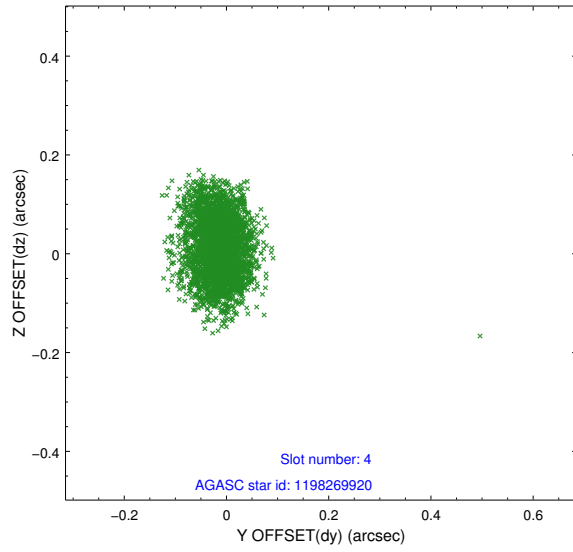
slot	status	id	mag	n_pts	med_dy	med_dz	dr1	dr2	ra	dec	mean_y	mean_z
0	FID	ACIS-S-3	7.36	1503	-0.081	-0.094	0.007	0.011	0.000000	0.000000	57.95	-1856.93
1	FID	ACIS-S-4	7.19	1503	-0.009	0.088	0.005	0.010	0.000000	0.000000	2158.21	179.72
2	FID	ACIS-S-5	7.23	1503	0.063	0.016	0.006	0.011	0.000000	0.000000	-1806.71	174.50
3	GUIDE	1198282824	7.30	3005	-0.030	-0.175	0.058	0.099	18.044095	-73.907062	819.13	1991.67
4	GUIDE	1198269920	8.25	3005	-0.015	0.014	0.074	0.118	20.316466	-73.033728	-647.89	-1632.95
5	GUIDE	1198282880	9.60	3004	0.019	0.009	0.092	0.152	17.772623	-73.017886	1952.95	-1015.06
6	GUIDE	1198283120	9.35	3004	-0.010	0.081	0.070	0.118	18.724531	-73.257934	766.30	-445.01
7	GUIDE	1198264832	9.53	3003	0.042	0.075	0.102	0.164	20.353668	-72.974637	-636.75	-1849.76

2.4 Star Slots

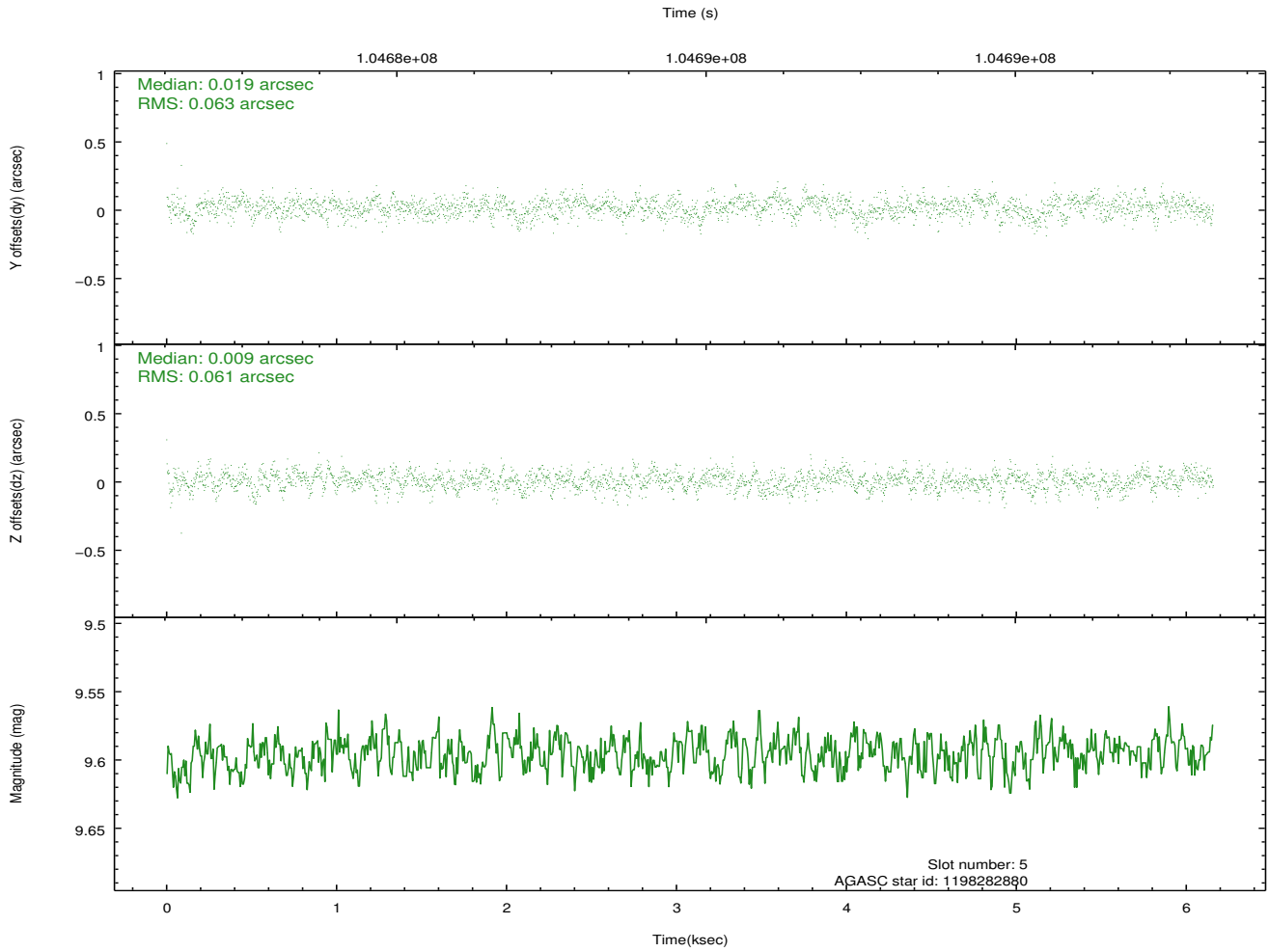
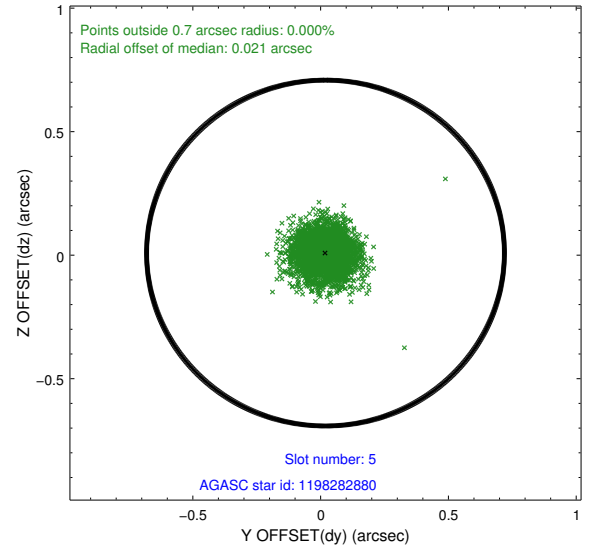
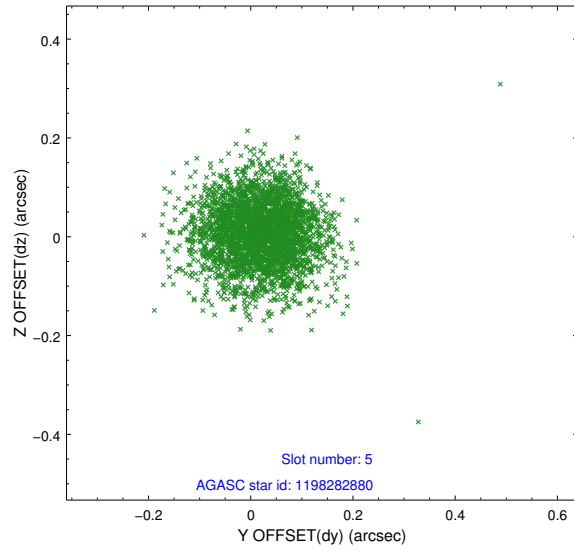
2.4.1 Slot 3



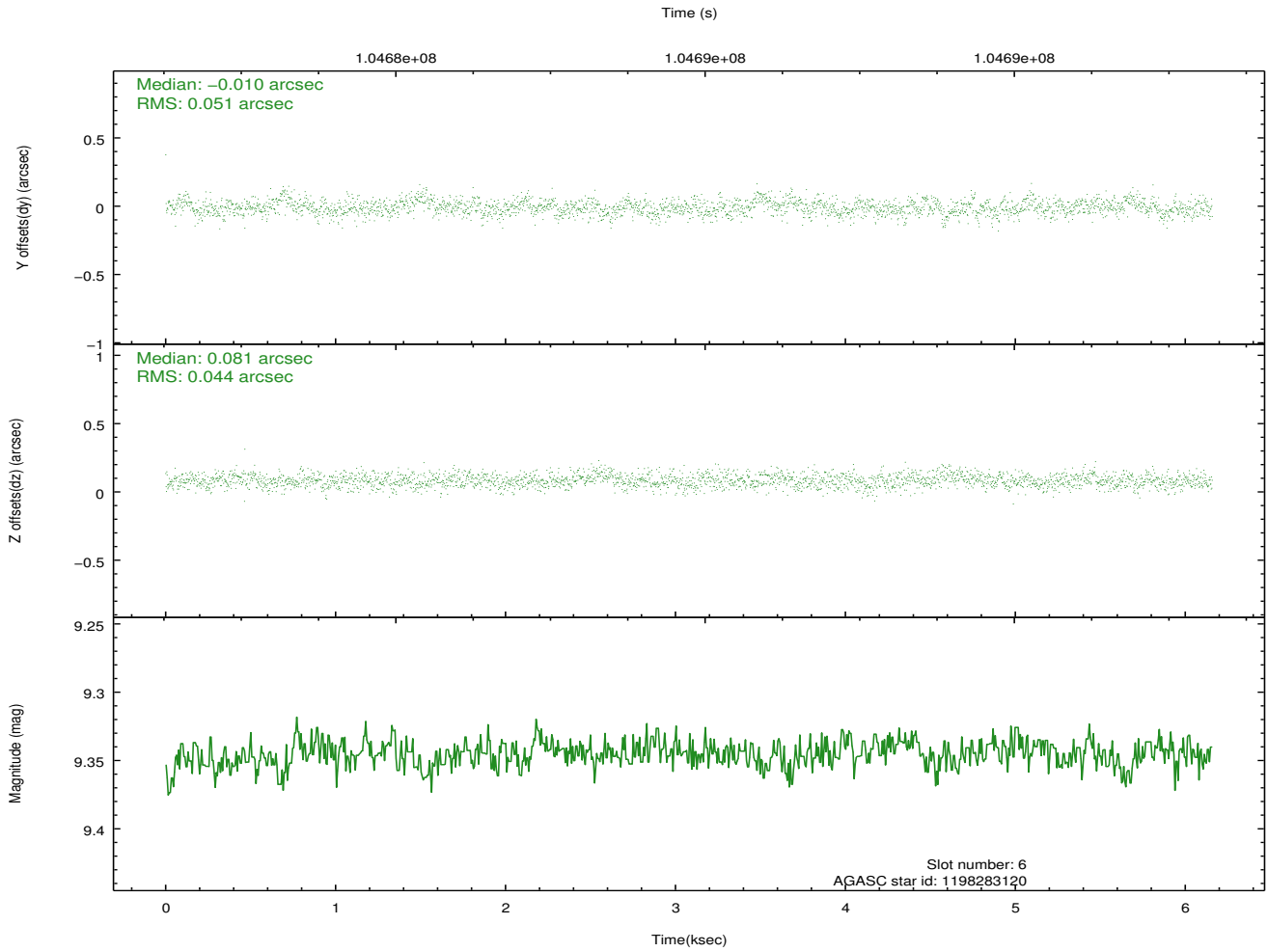
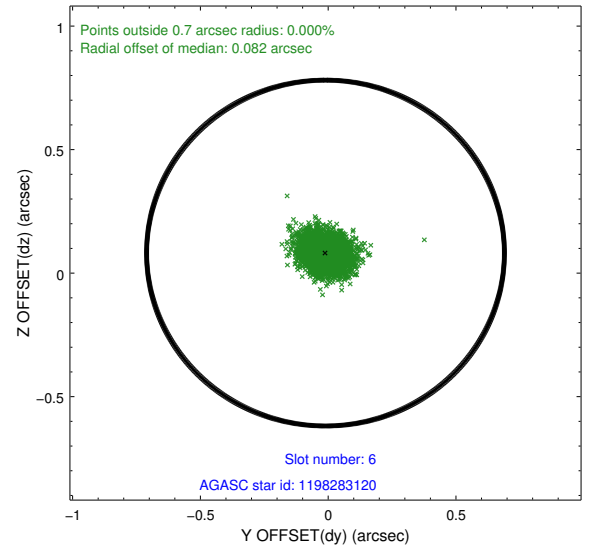
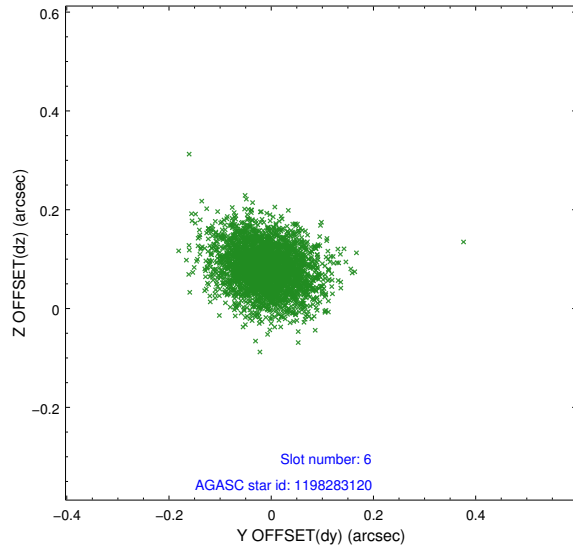
2.4.2 Slot 4



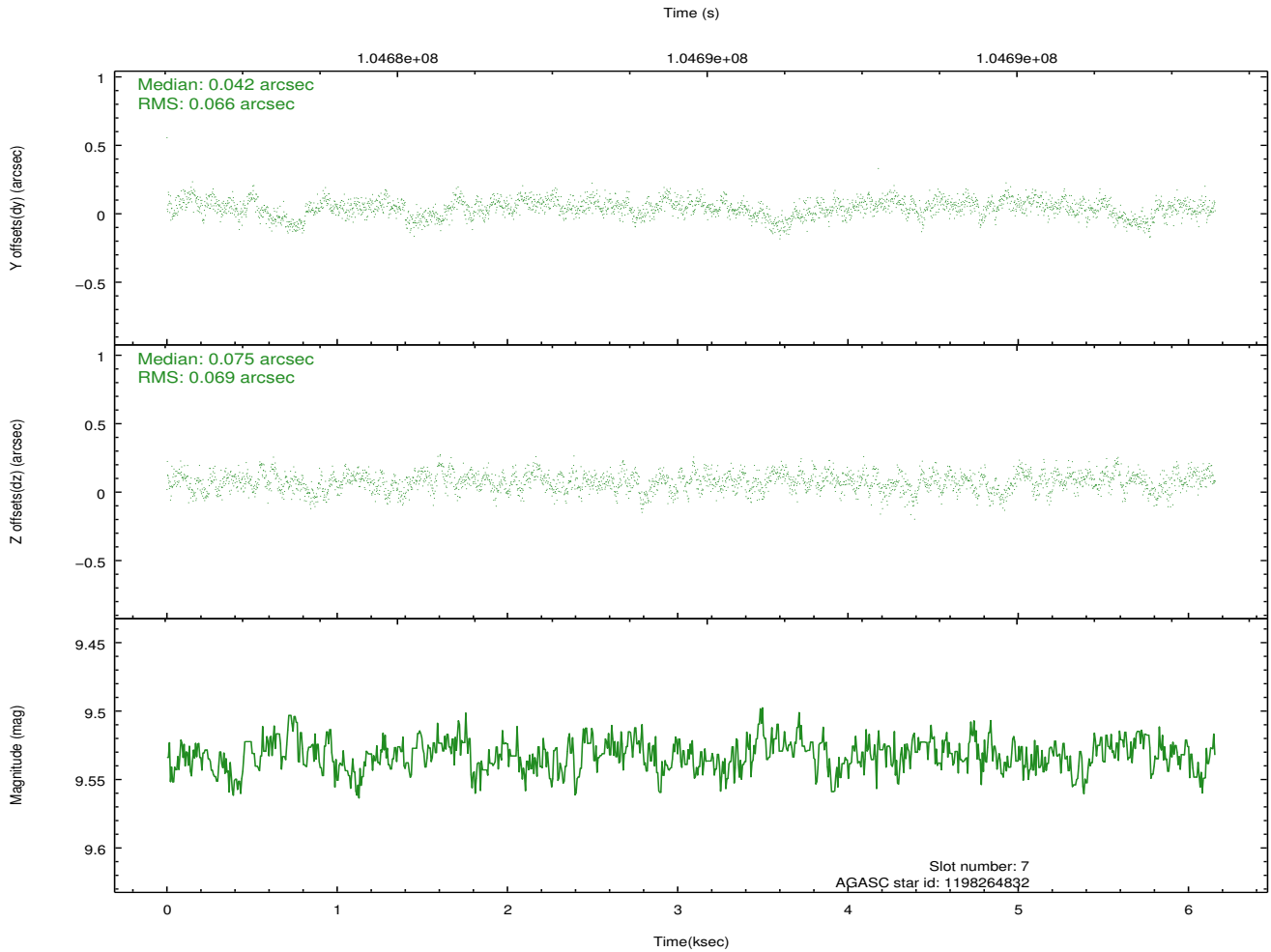
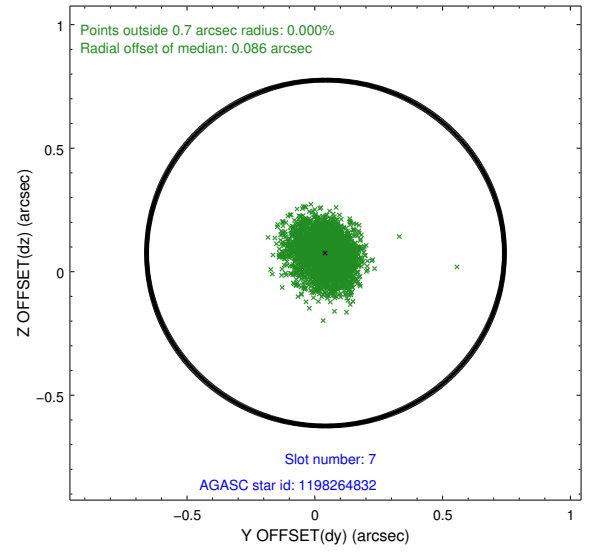
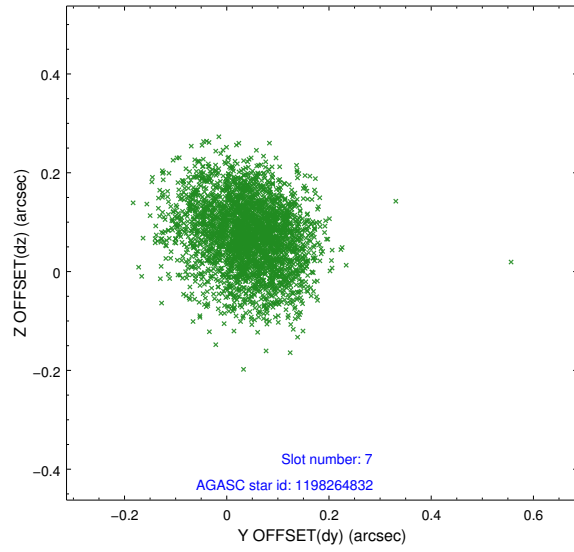
2.4.3 Slot 5



2.4.4 Slot 6

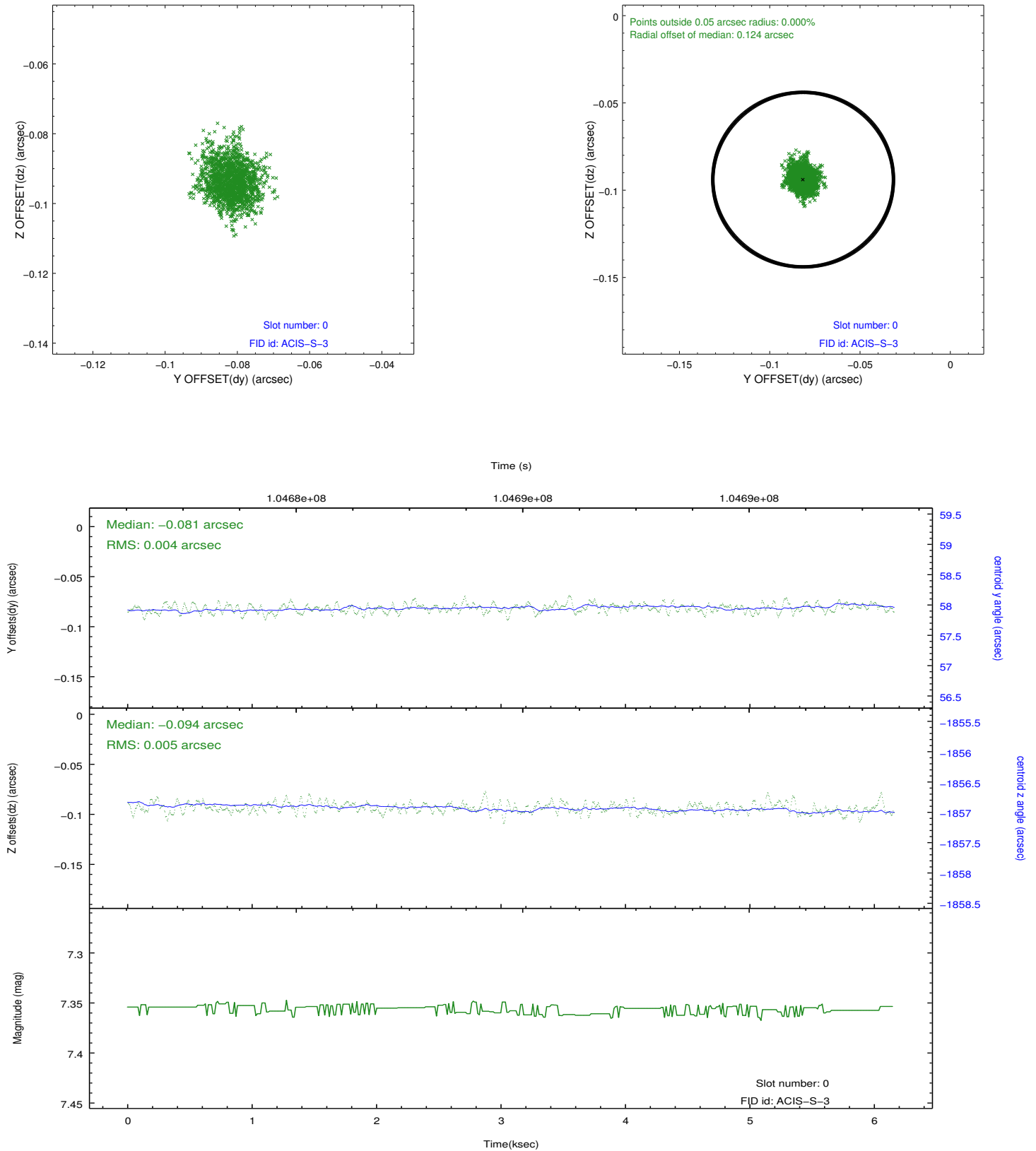


2.4.5 Slot 7

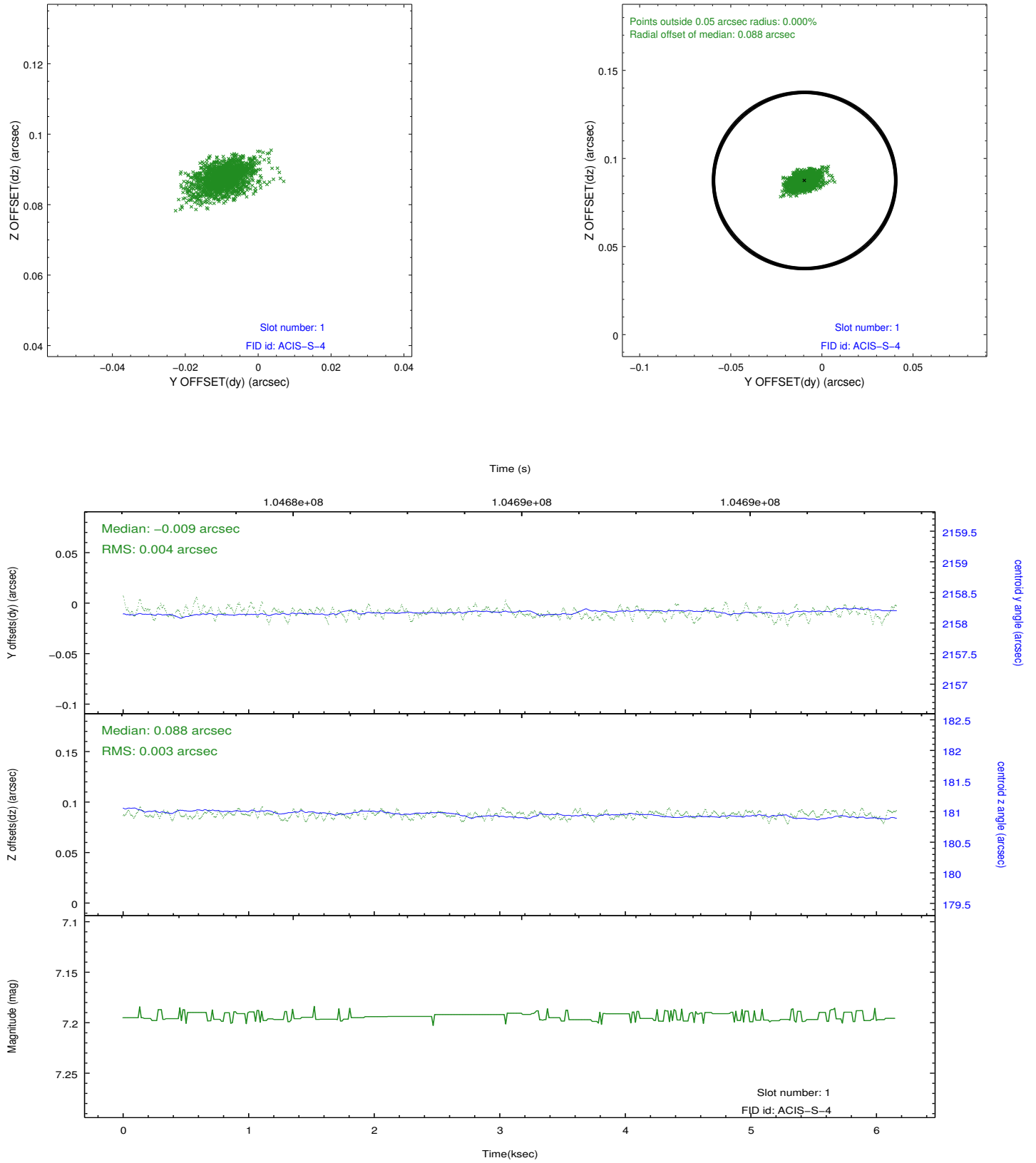


2.5 FID Slots

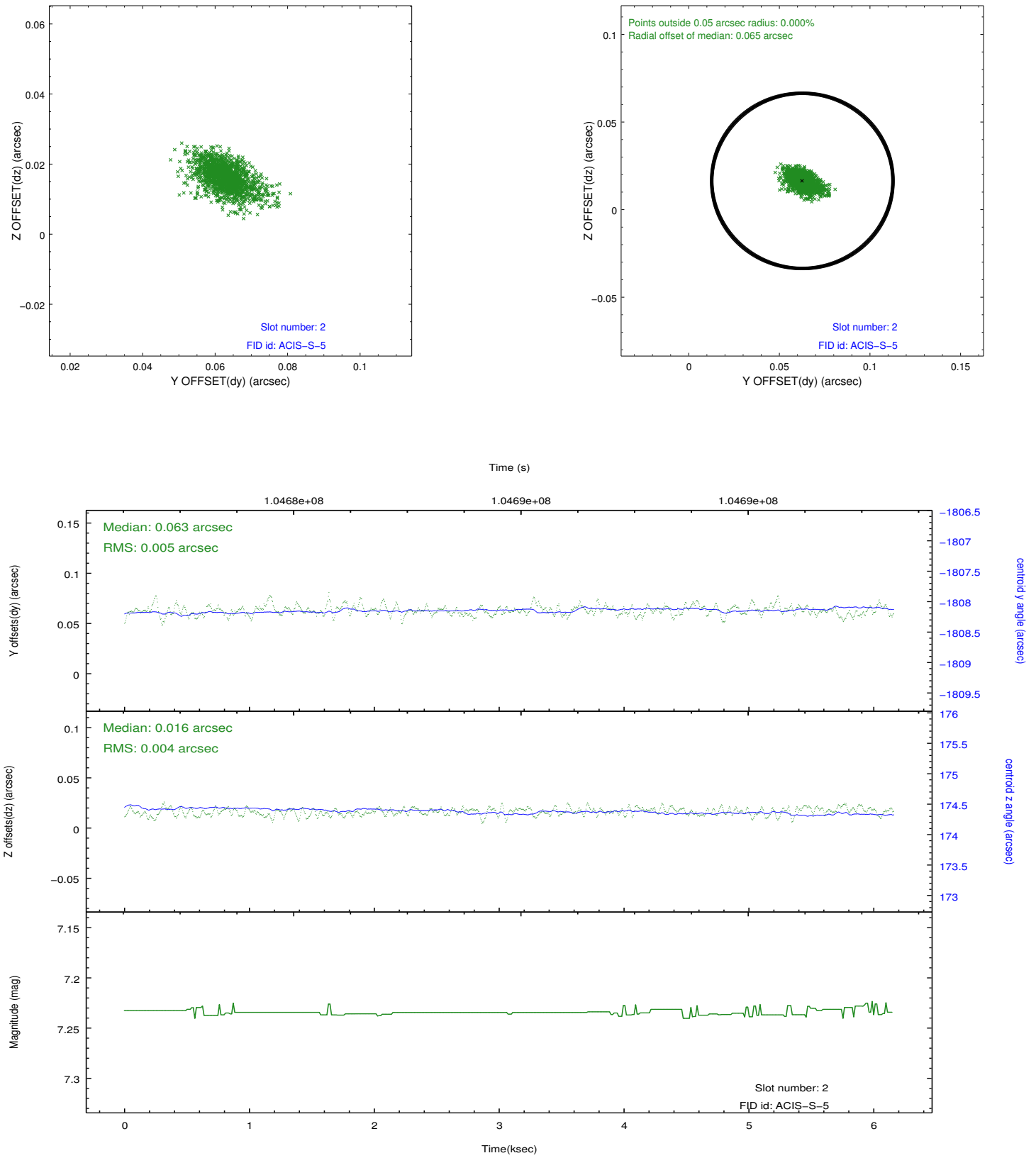
2.5.1 Slot 0



2.5.2 Slot 1



2.5.3 Slot 2



A Summary

A.1 Status

V&V Scientist	Joy Nichols
V&V Date (YYYY-MM-DD)	2012.09.19
V&V Edition	1
V&V Disposition and Status	OK
V&V Charge Time	6.156

A.2 Comments

Time constraint met.