

V&V Reference Report

L2 ASCDS Version : 7.6.10

Observation 1026 - L2 Version 001
Chandra X-Ray Center

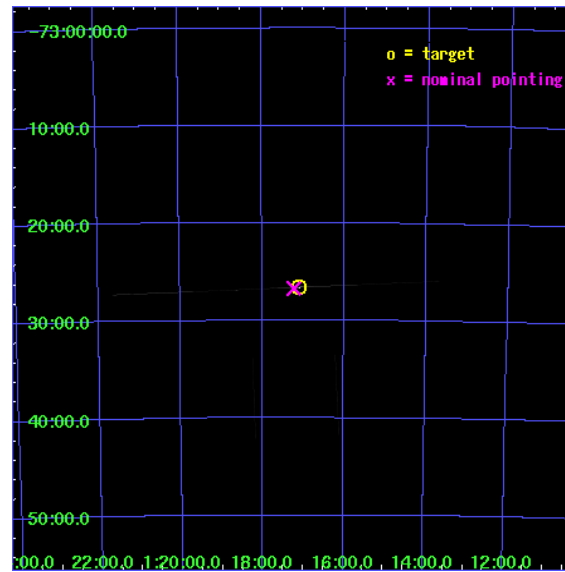
L2 Processing Date : Jun 12 2007

Contents

1	Front	2
2	OBI	3
2.1	OBI	3
2.1.1	Images	3
2.1.2	Bias	3
2.1.3	Parameters	4
2.1.4	Events	4
2.2	Compared Parameters	5
2.3	Aspect	6
2.4	Star Slots	9
2.4.1	Slot 3	9
2.4.2	Slot 4	10
2.4.3	Slot 5	11
2.4.4	Slot 6	12
2.4.5	Slot 7	13
2.5	FID Slots	14
2.5.1	Slot 0	14
2.5.2	Slot 1	15
2.5.3	Slot 2	16
A	Summary	17
A.1	Status	17
A.2	Comments	17

1 Front

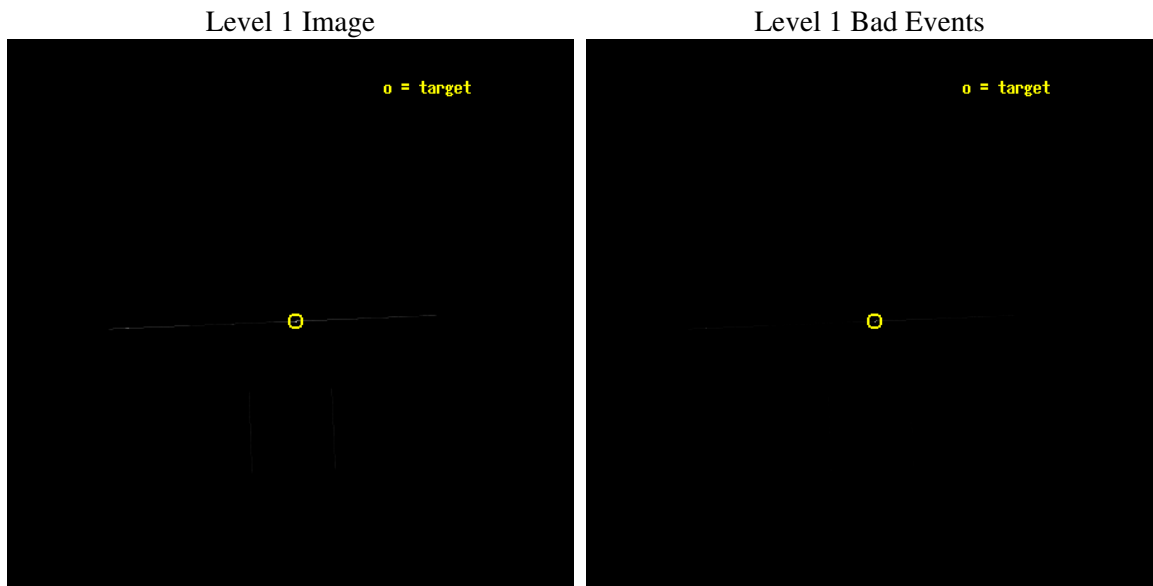
seq_num	400104
obs_id	1026
title	HIGH RESOLUTION UV/X-RAY SPECTROSCOPY OF SMC X-1
observer	Dr. Saeqa Vrtilek
object	SMC X-1
ra_targ	19.271667
dec_targ	-73.442944
ra_nom	19.305492390557
dec_nom	-73.445154163596
roll_nom	357.60334661742
revision	3
ontime	6458.7078507245
livetime	6433.4785231826
ontime2	6460.1647456884
ontime3	6460.1618654579
ontime5	6461.6251160353
ontime6	6461.6251178384
ontime7	6458.7078507245
ontime8	6460.1665099263
l2events	452445



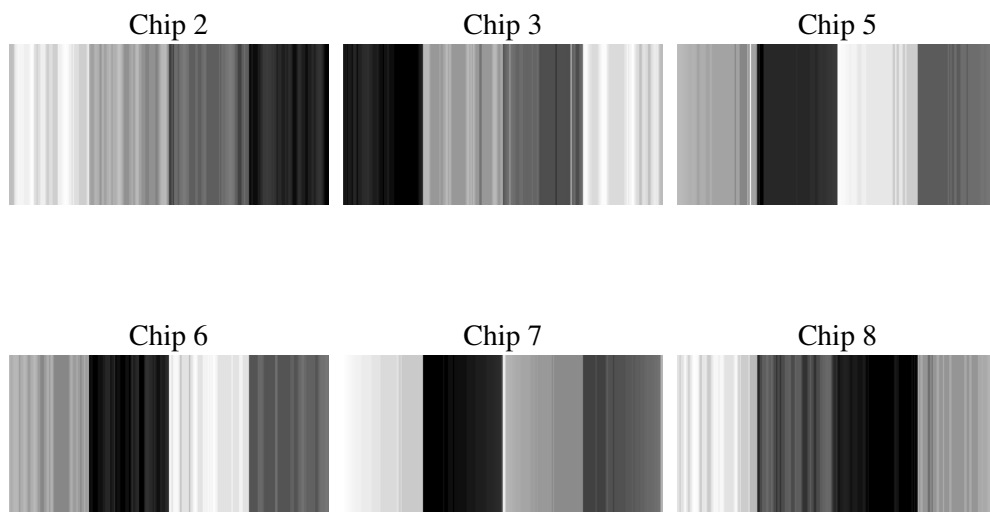
2 OBI

2.1 OBI

2.1.1 Images



2.1.2 Bias



2.1.3 Parameters

obi_num	0
ascdsver	7.6.10
caldsver	3.4.0
date	2007-06-12T11:43:05
revision	3

sched_exp_time	6000.000000
ontime	6458.7078507245
ontime2	6460.1647456884
ontime3	6460.1618654579
ontime5	6461.6251160353
ontime6	6461.6251178384
ontime7	6458.7078507245
ontime8	6460.1665099263
l1events	562577

2.1.4 Events

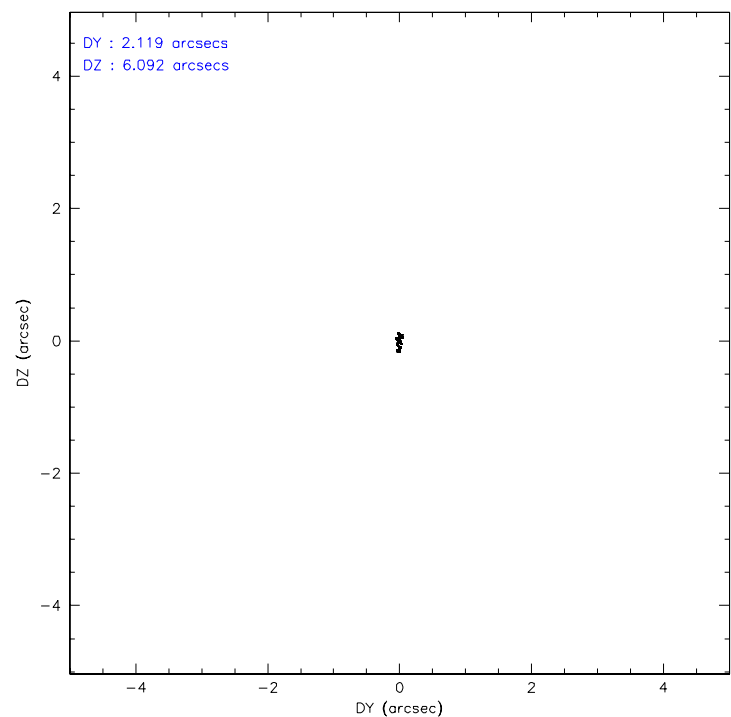
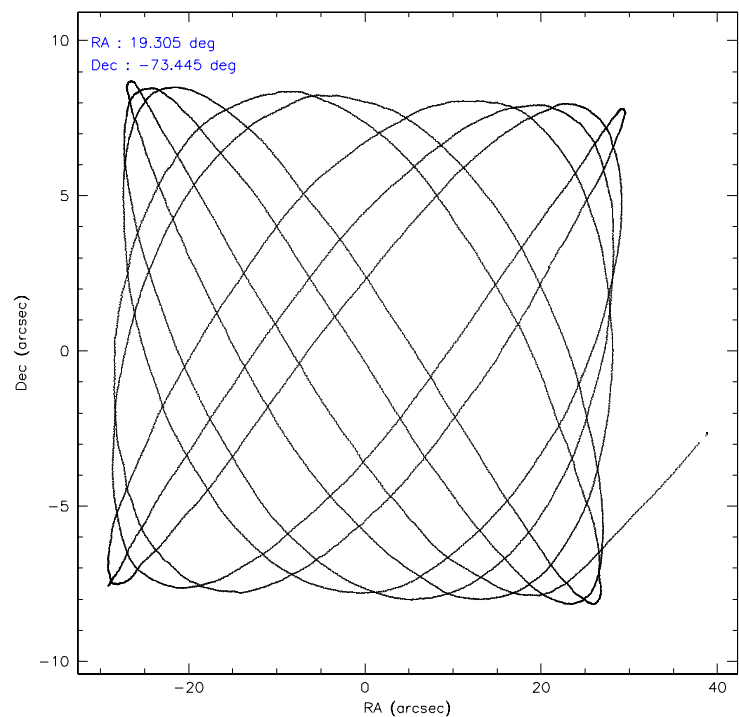
	ccd 2	ccd 3	ccd 5	ccd 6	ccd 7	ccd 8
level 1 events	9579	10151	46455	12591	456424	27377
rejected events	2047	2189	7049	2447	62630	5692
rejected %	21%	21%	15%	19%	13%	20%

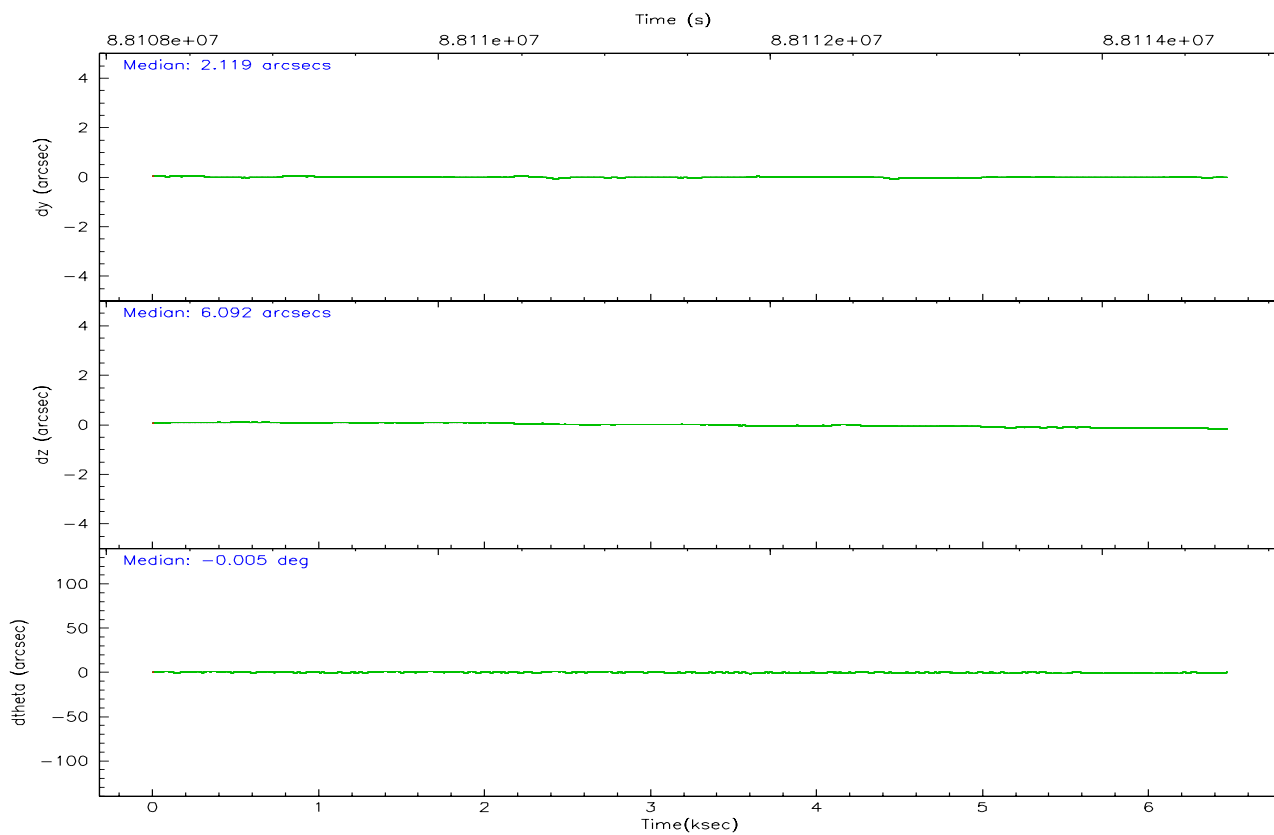
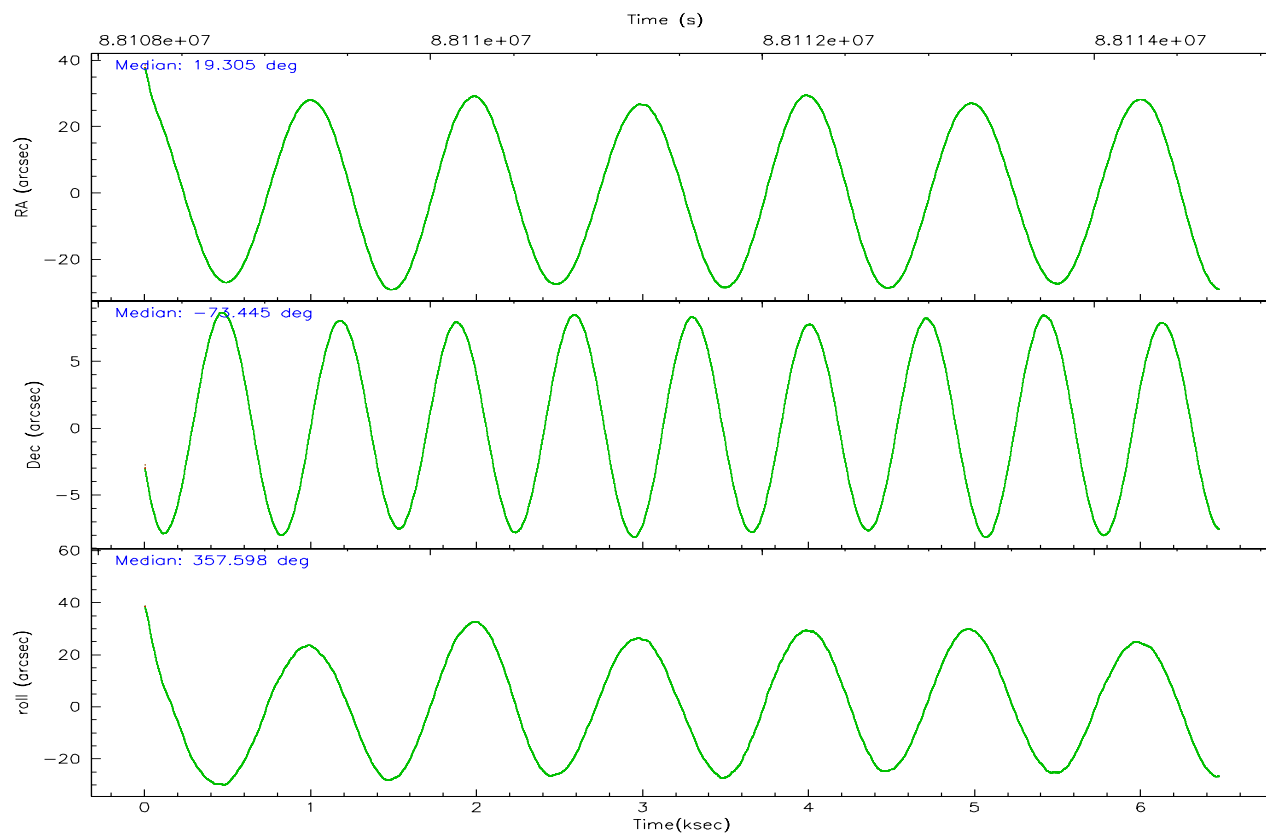
	ccd 2	ccd 3	ccd 5	ccd 6	ccd 7	ccd 8
grade 0 events	1133	1127	10629	1306	91773	6296
	11%	11%	22%	10%	20%	22%
grade 1 events	36	32	64	22	11227	76
	0%	0%	0%	0%	2%	0%
grade 2 events	3155	3257	11535	5203	107011	6541
	32%	32%	24%	41%	23%	23%
grade 3 events	1234	1441	1338	1263	41597	3566
	12%	14%	2%	10%	9%	13%
grade 4 events	1186	1189	1192	1166	40181	3325
	12%	11%	2%	9%	8%	12%
grade 5 events	1366	1428	3964	1648	41641	2325
	14%	14%	8%	13%	9%	8%
grade 6 events	1469	1677	17733	1983	122994	5248
	15%	16%	38%	15%	26%	19%
grade 7 events	0	0	0	0	0	0
	0%	0%	0%	0%	0%	0%

2.2 Compared Parameters

Parameter	Planned	Actual	Parameter	Planned	Actual
Instrument	ACIS	ACIS	Obspar format version number	6	6
Detector	ACIS-235678	ACIS-235678	Obspar file type	PREDICTED	ACTUAL
Grating	NONE	NONE	Obspar update status	NONE	UPDATED
Data mode	CC33_FAINT	CC33_FAINT	Number of optional ACIS chips dropped	0	0
Observation mode	POINTING	POINTING	On-chip summing requested	N	N
Pointing RA	19.220656	19.30549239055728	Subarray requested	NONE	NONE
Pointing Dec	-73.457978	-73.44515416359604	Alternating exposures requested	N	N
Pointing Roll	357.365396	357.6033466174169	Primary exposure time	0.000000	0
SIM focus pos (mm)	-0.684267	-0.6828225247311905			
SIM defocus (mm)	0	0.001444936568705701			
SIM translation stage pos (mm)	-190.132523	-190.1425803651734			
SIM translation stage offset (mm)	0	0.01005778216563158			
Phase constraints	Y	Y			
Phase period	3.892000	3.892000			
Phase epoch	50141.466800	50141.466800			
Phase start	0.000000	0.000000			
Phase end	0.800000	0.800000			
Phase start error	0.050000	0.050000			
Phase end error	0.050000	0.050000			
Observation start time	88108755.184000	88107659.25048999			
Observation start date	2000-10-16T18:38:11	2000-10-16T18:20:59			
Observation end time	88114755.184000	88115222.725776			
Observation end date	2000-10-16T20:18:11	2000-10-16T20:27:02			
Read mode	CONTINUOUS	CONTINUOUS			

2.3 Aspect



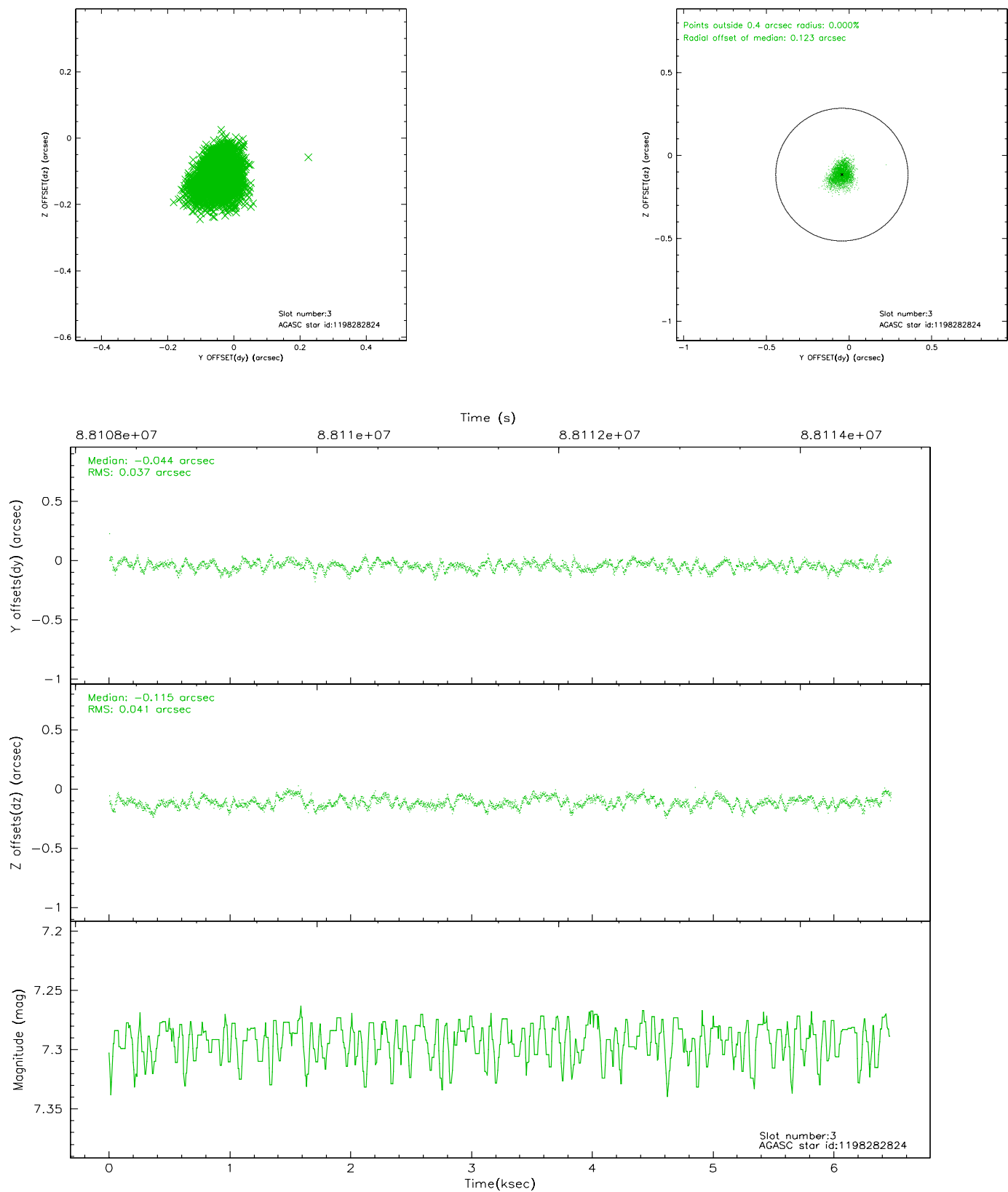


Slot Statistics

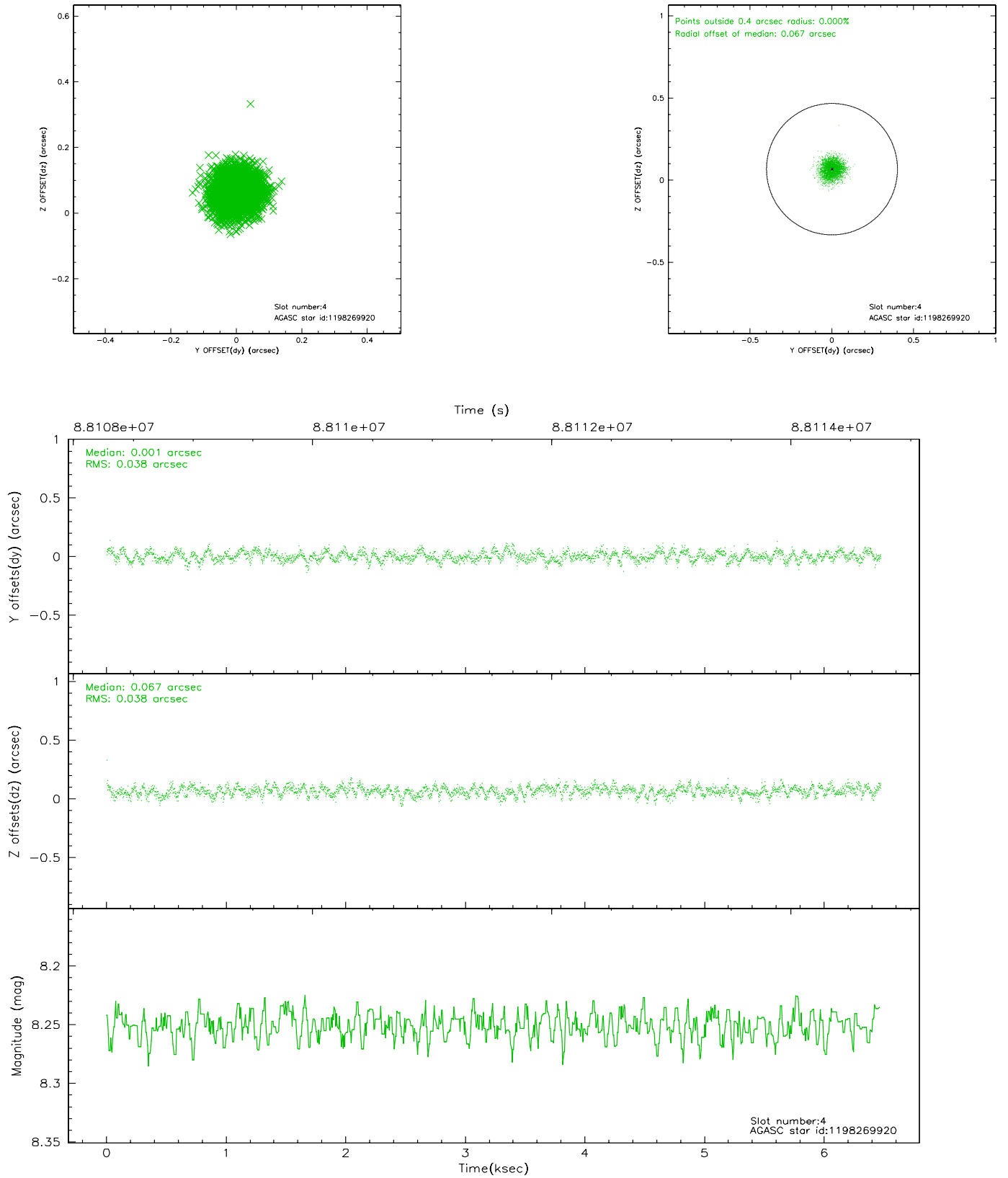
slot	status	id	mag	n_pts	med_dy	med_dz	dr1	dr2	ra	dec	mean_y	mean_z
0	FID	ACIS-S-2	7.11	1577	-0.031	0.026	0.006	0.011	0.000000	0.000000	-754.75	-1727.16
1	FID	ACIS-S-4	7.20	1577	-0.055	0.008	0.005	0.009	0.000000	0.000000	2158.08	180.41
2	FID	ACIS-S-5	7.24	1577	0.055	-0.025	0.006	0.010	0.000000	0.000000	-1806.36	175.03
3	GUIDE	1198282824	7.29	3153	-0.044	-0.115	0.059	0.095	18.044095	-73.907062	-1097.53	-1680.38
4	GUIDE	1198269920	8.25	3155	0.001	0.067	0.058	0.091	20.316466	-73.033728	1079.99	1568.05
5	GUIDE	1198275224	9.64	3154	-0.085	-0.010	0.105	0.169	16.880121	-73.921864	-2250.98	-1820.56
6	GUIDE	1198272400	9.16	3155	0.073	-0.014	0.067	0.108	20.411923	-73.620598	1235.14	-541.42
7	GUIDE	1198264832	9.53	3149	0.056	0.074	0.084	0.138	20.353668	-72.974637	1114.10	1782.16

2.4 Star Slots

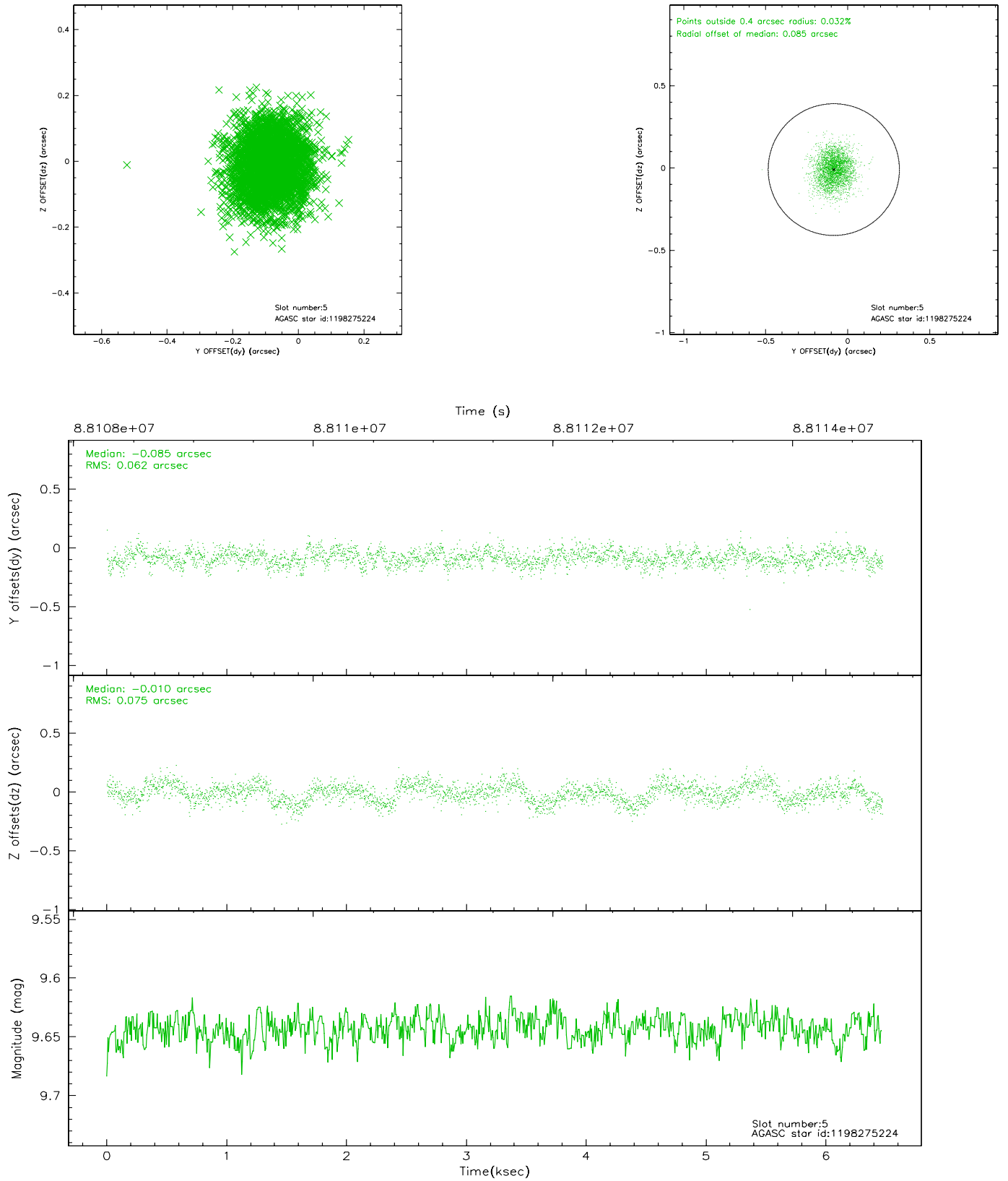
2.4.1 Slot 3



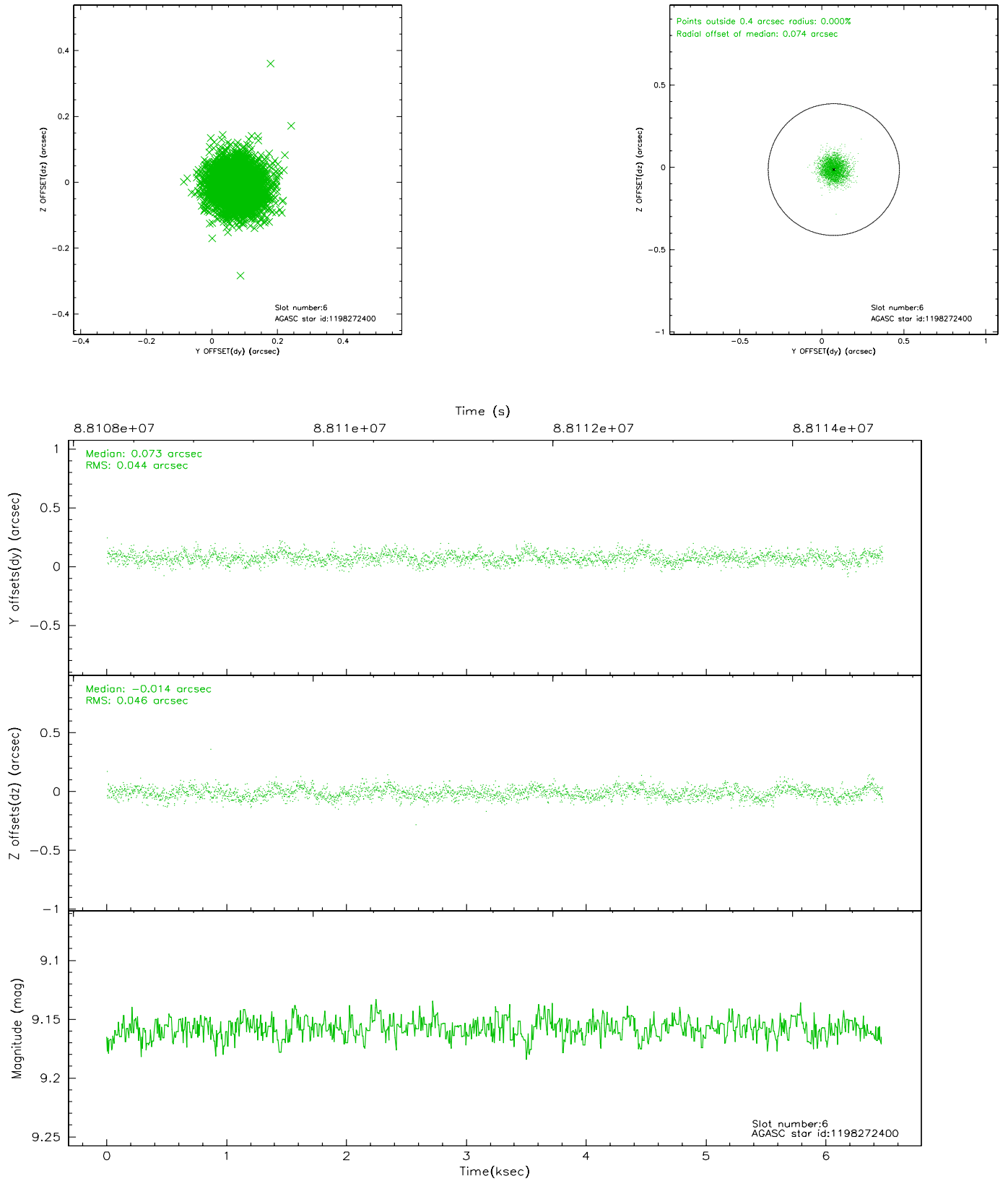
2.4.2 Slot 4



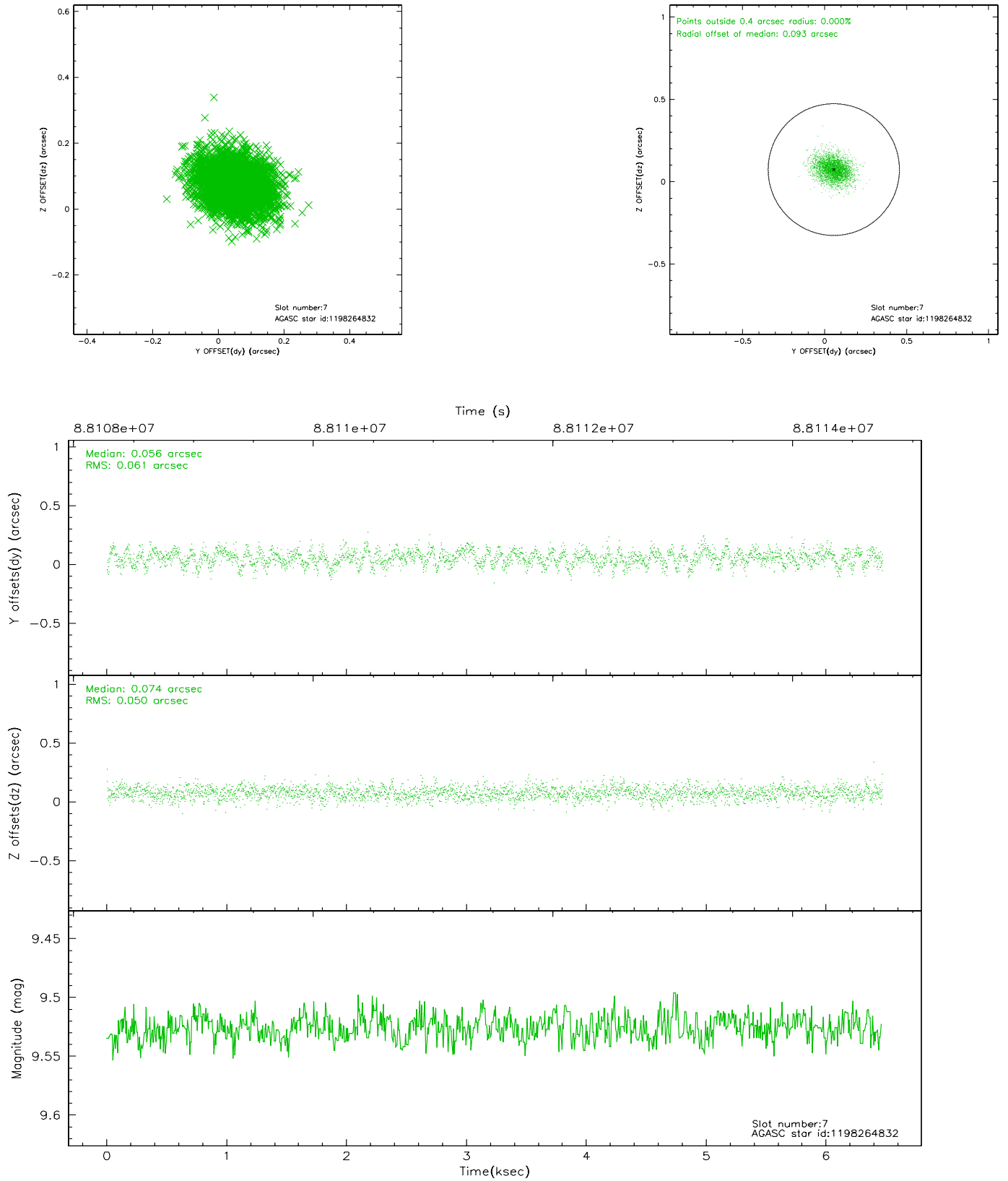
2.4.3 Slot 5



2.4.4 Slot 6

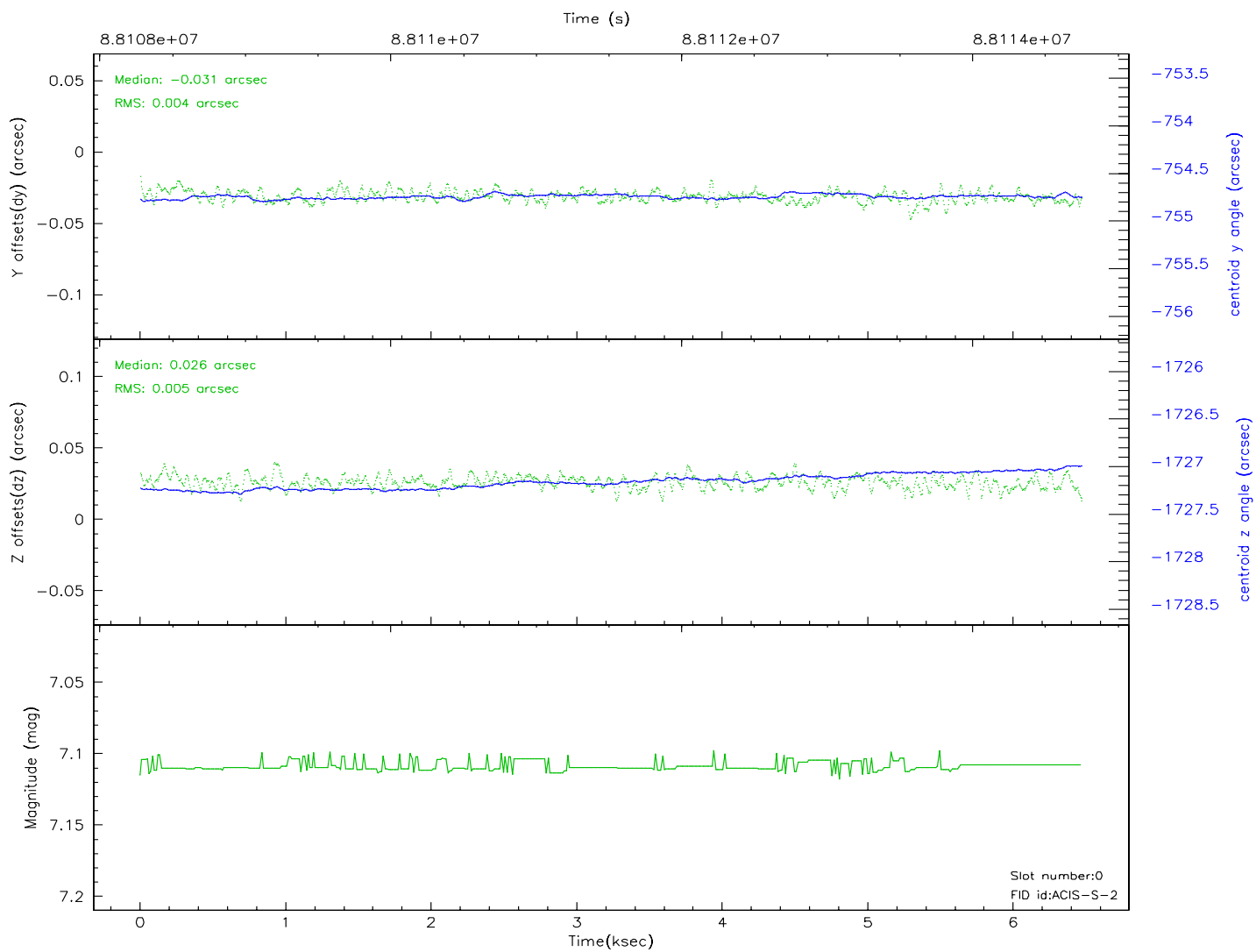
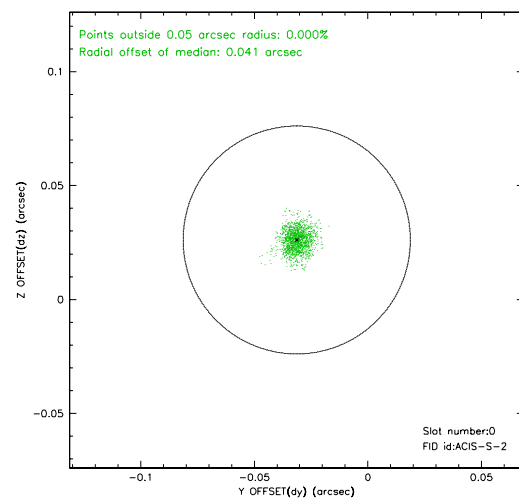
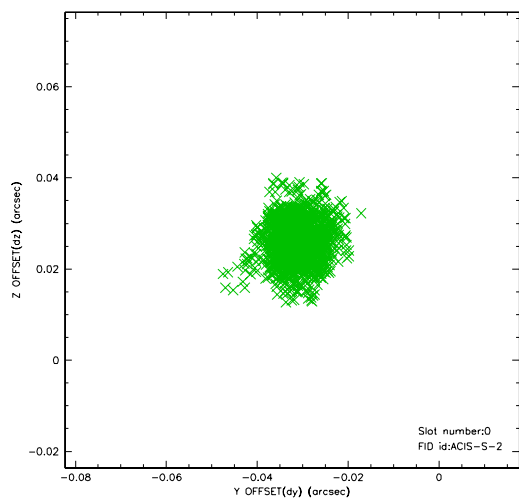


2.4.5 Slot 7

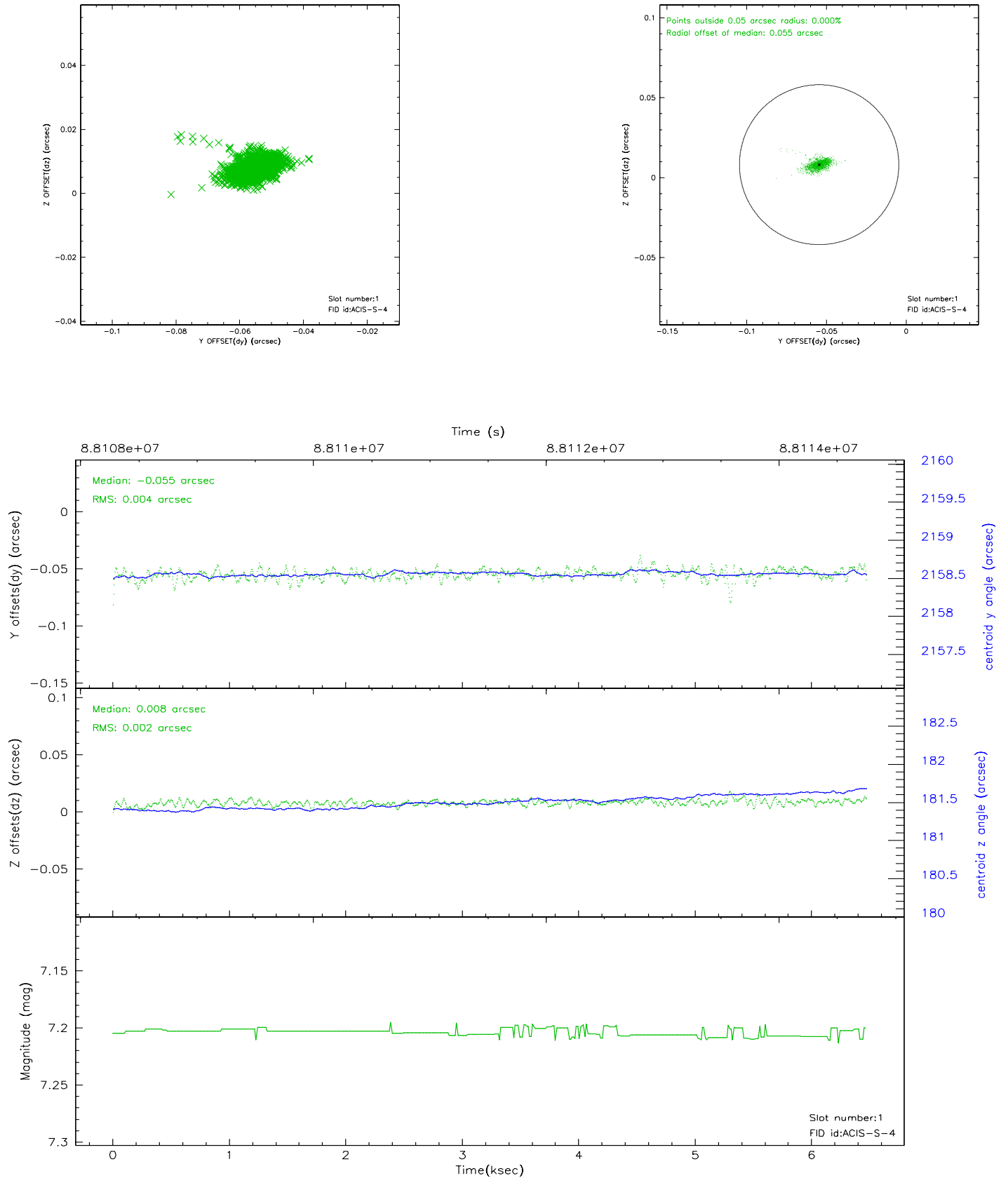


2.5 FID Slots

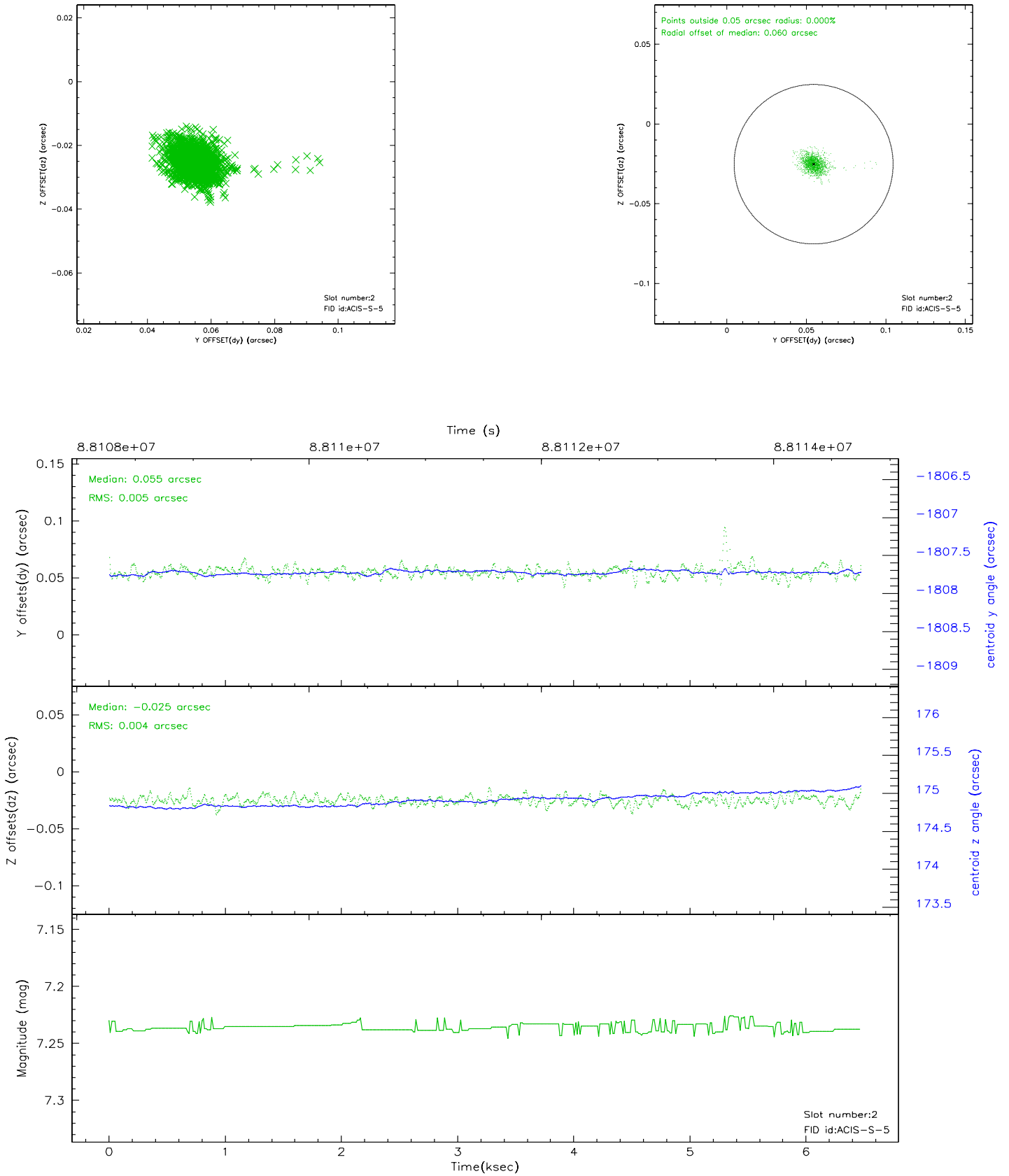
2.5.1 Slot 0



2.5.2 Slot 1



2.5.3 Slot 2



A Summary

A.1 Status

V&V Scientist	David Huenemoerder
V&V Date (YYYY-MM-DD)	2007.06.12
V&V Edition	1
V&V Disposition and Status	OK
V&V Charge Time	6.462

A.2 Comments