

V&V Reference Report

L2 ASCDS Version : 8.4.5

Observation 1024 - L2 Version 4
Chandra X-Ray Center

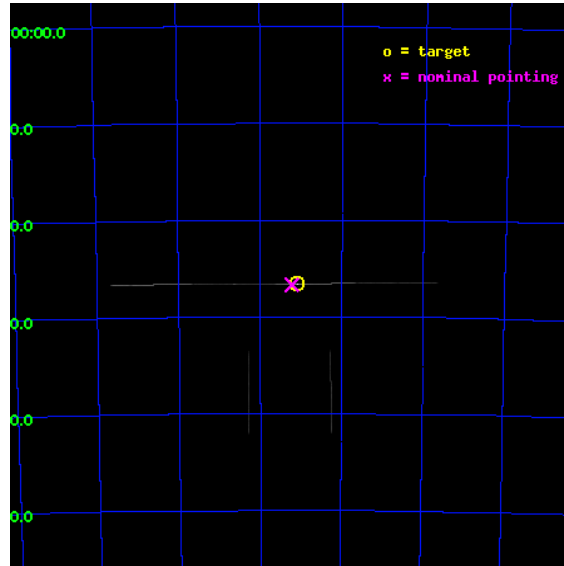
L2 Processing Date : Sep 2 2012

Contents

1	Front	2
2	OBI	3
2.1	OBI	3
2.1.1	Images	3
2.1.2	Bias	3
2.1.3	Parameters	4
2.1.4	Events	4
2.2	Compared Parameters	5
2.3	Aspect	6
2.4	Star Slots	9
2.4.1	Slot 3	9
2.4.2	Slot 4	10
2.4.3	Slot 5	11
2.4.4	Slot 6	12
2.4.5	Slot 7	13
2.5	FID Slots	14
2.5.1	Slot 0	14
2.5.2	Slot 1	15
2.5.3	Slot 2	16
A	Summary	17
A.1	Status	17
A.2	Comments	17

1 Front

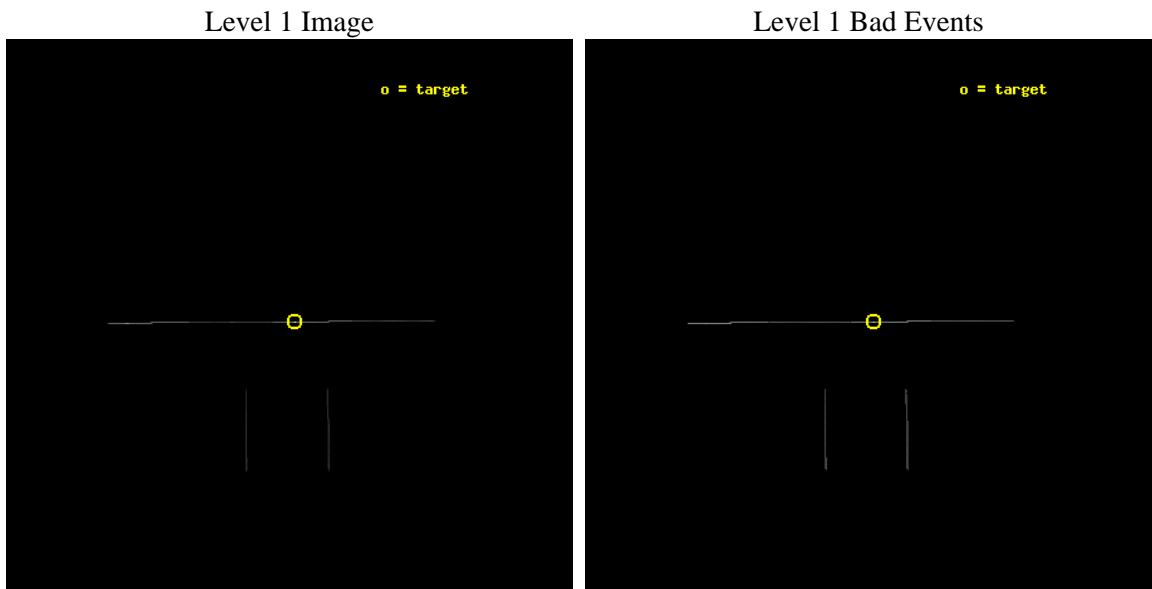
seq_num	400102	Sequence number
obs_id	1024	Observation id
title	HIGH RESOLUTION UV/X-RAY SPECTROSCOPY OF SMC X-1	Proposal title
observer	Dr. Saeqa Vrtilek	Principal investigator
object	SMC X-1	Source name
ra_targ	19.271667	Observer's specified target RA [deg]
dec_targ	-73.442944	Observer's specified target Dec [deg]
ra_nom	19.305434569611	Nominal RA [deg]
dec_nom	-73.444786530827	Nominal Dec [deg]
roll_nom	359.56075034834	Nominal Roll [deg]
revision	4	Processing version of data
ontime	6240.25	Sum of GTIs [s]
livetime	6215.8740234375	Livetime [s]
ontime2	6240.25	Sum of GTIs [s]
ontime3	6240.25	Sum of GTIs [s]
ontime5	6240.25	Sum of GTIs [s]
ontime6	6240.25	Sum of GTIs [s]
ontime7	6240.25	Sum of GTIs [s]
ontime8	6240.25	Sum of GTIs [s]
l2events	482132	Number of level 2 events



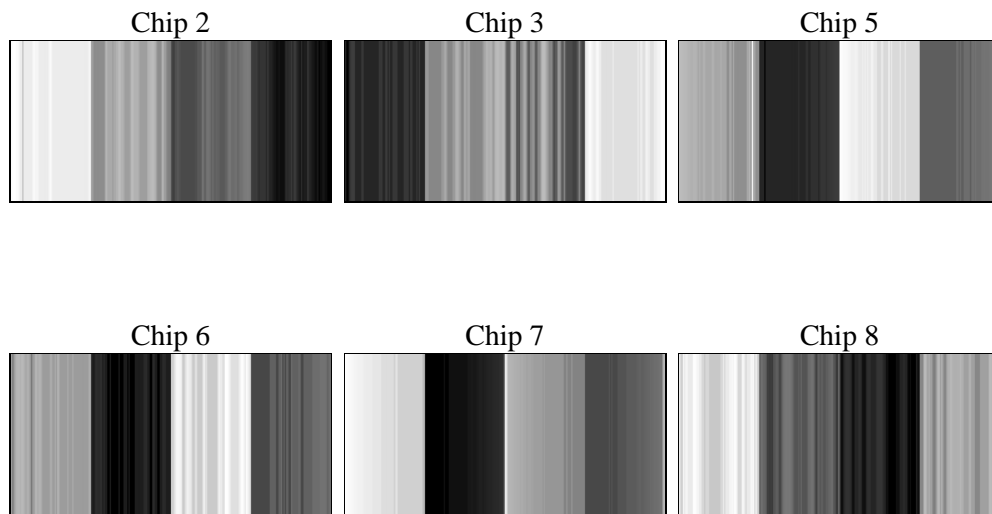
2 OBI

2.1 OBI

2.1.1 Images



2.1.2 Bias



2.1.3 Parameters

obi_num	0	Obi number	sched_exp_time	6000.000000	[s] Scheduled observation exposure time
ascdsver	8.4.5	Processing system revision	ontime	6240.25	Sum of GTIs [s]
caldsver	4.5.1.1	 	ontime2	6240.25	Sum of GTIs [s]
date	2012-09-02T09:40:04	Date and time of file creation	ontime3	6240.25	Sum of GTIs [s]
revision	4	Processing version of data	ontime5	6240.25	Sum of GTIs [s]
			ontime6	6240.25	Sum of GTIs [s]
			ontime7	6240.25	Sum of GTIs [s]
			ontime8	6240.25	Sum of GTIs [s]
			l1events	641661	Number of level 1 events

2.1.4 Events

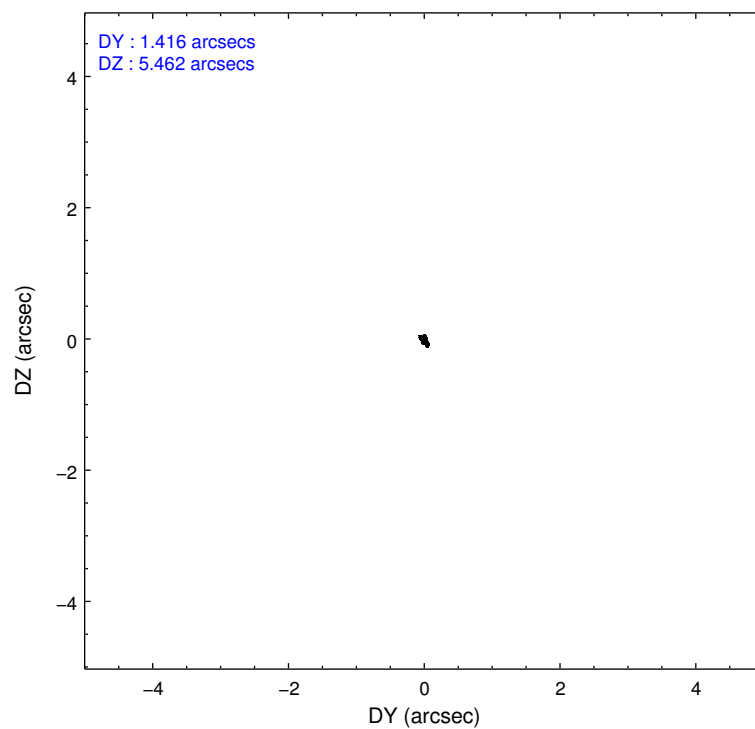
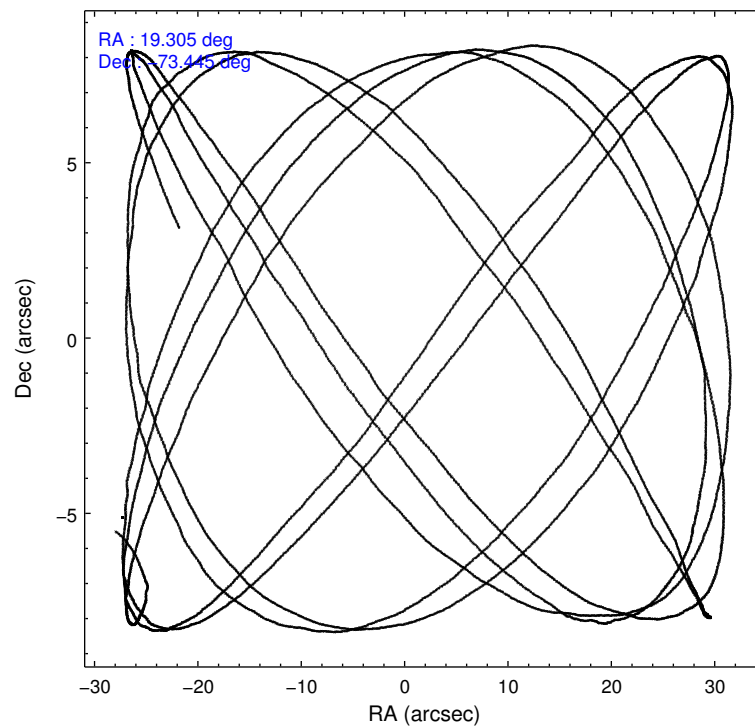
	ccd 2	ccd 3	ccd 5	ccd 6	ccd 7	ccd 8
level 1 events	12520	13302	94195	18775	477448	25421
rejected events	3546	3611	31217	5747	82602	6816
rejected %	28%	27%	33%	30%	17%	26%

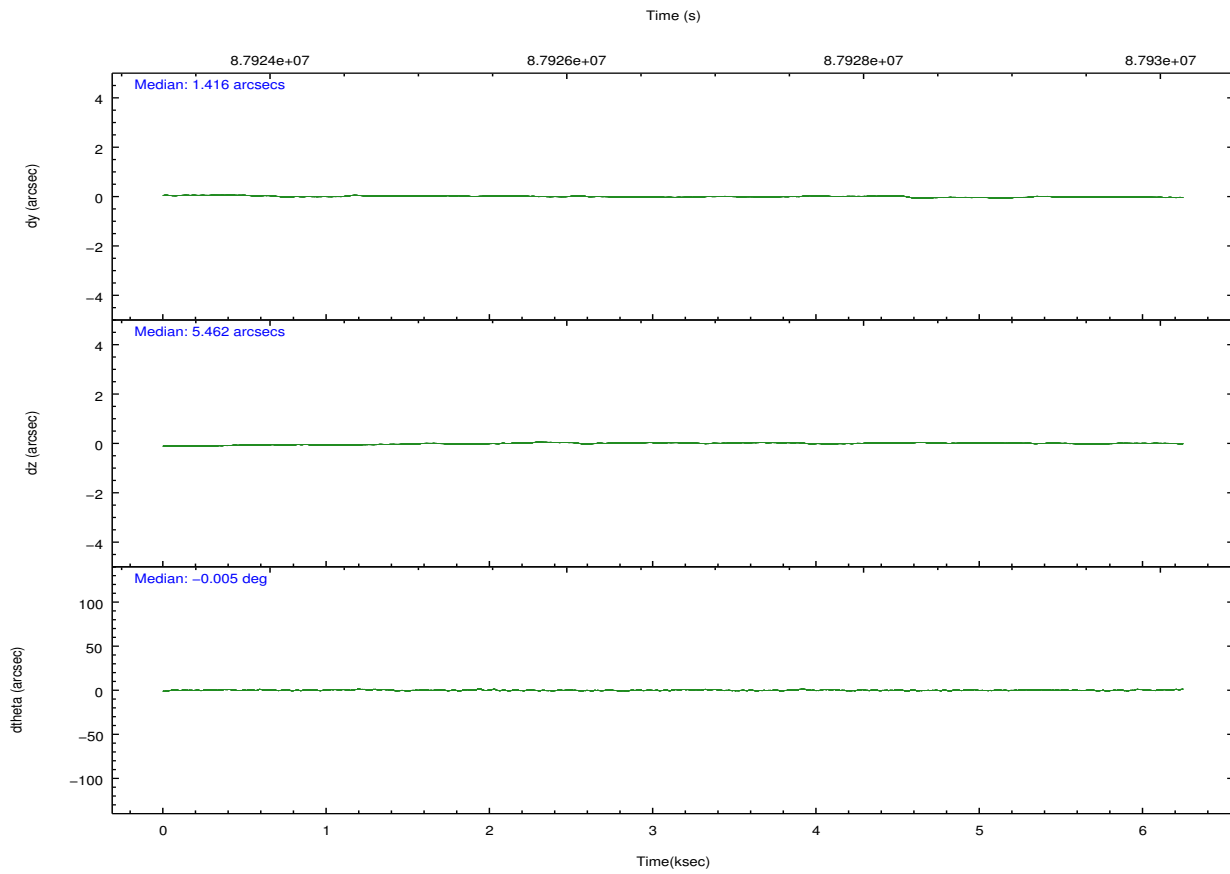
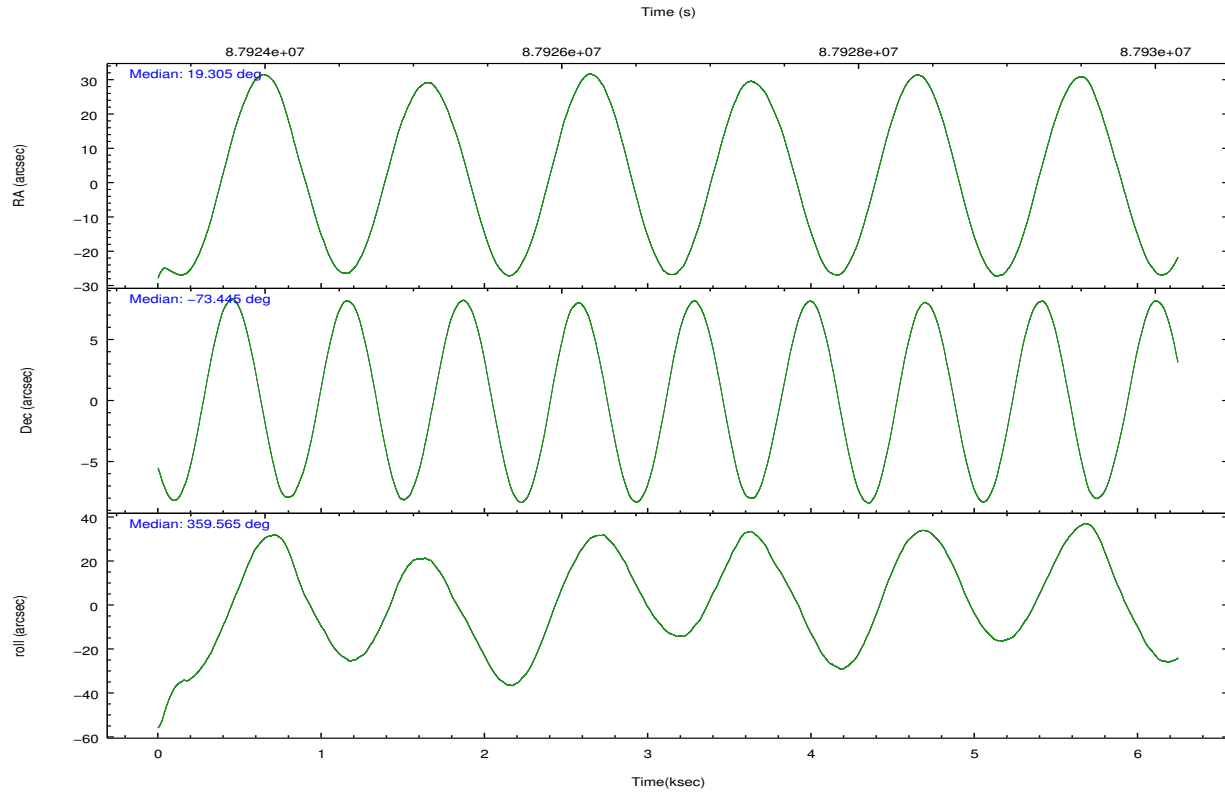
	ccd 2	ccd 3	ccd 5	ccd 6	ccd 7	ccd 8
grade 0 events	1322	1325	18585	1991	88846	4194
	10%	9%	19%	10%	18%	16%
grade 1 events	26	31	89	38	9807	58
	0%	0%	0%	0%	2%	0%
grade 2 events	6190	6621	26864	11140	109848	11264
	49%	49%	28%	59%	23%	44%
grade 3 events	1109	1280	3039	1060	42799	1942
	8%	9%	3%	5%	8%	7%
grade 4 events	1097	1086	2975	1051	41497	1801
	8%	8%	3%	5%	8%	7%
grade 5 events	1293	1408	4462	1553	38187	2063
	10%	10%	4%	8%	7%	8%
grade 6 events	1483	1551	38181	1942	146464	4099
	11%	11%	40%	10%	30%	16%
grade 7 events	0	0	0	0	0	0
	0%	0%	0%	0%	0%	0%

2.2 Compared Parameters

Parameter	Planned	Actual	Parameter	Planned	Actual
Instrument	ACIS	ACIS	Obspar format version number	7	7
Detector	ACIS-235678	ACIS-235678	Obspar file type	PREDICTED	ACTUAL
Grating	NONE	NONE	Obspar update status	NONE	UPDATED
Data mode	CC33_FAINT	CC33_FAINT	Number of optional ACIS chips dropped	0	0
Observation mode	POINTING	POINTING	On-chip summing requested	N	N
[deg] Pointing RA	19.222492	19.30543456961139	Subarray requested	NONE	NONE
[deg] Pointing Dec	-73.458455	-73.44478653082723	Alternating exposures requested	N	N
[deg] Pointing Roll	359.324630	359.5607503483378	[s] Primary exposure time	0.000000	0
[s] Window start time (MET)	87923524.184000	87923524.184000			
[s] Window stop time (MET)	87930724.184000	87930724.184000			
[mm] SIM focus pos	-0.684267	-0.6828225247311905			
[mm] SIM defocus	0	0.001444936568705701			
[mm] SIM translation stage pos	-190.132523	-190.1400660498719			
[mm] SIM translation stage offset	0	0.00754346686406393			
Phase constraints	Y	Y			
[d] Phase period	3.892000	3.892000			
[d] Phase epoch (MJD)	50141.466800	50141.466800			
Phase start	0.000000	0.000000			
Phase end	0.800000	0.800000			
Phase start error	0.050000	0.050000			
Phase end error	0.050000	0.050000			
[s] Observation start time (MET)	87923839.184000	87922855.331012			
Observation start date	2000-10-14T15:16:15	2000-10-14T15:00:55			
[s] Observation end time (MET)	87929839.184000	87930420.343798			

2.3 Aspect



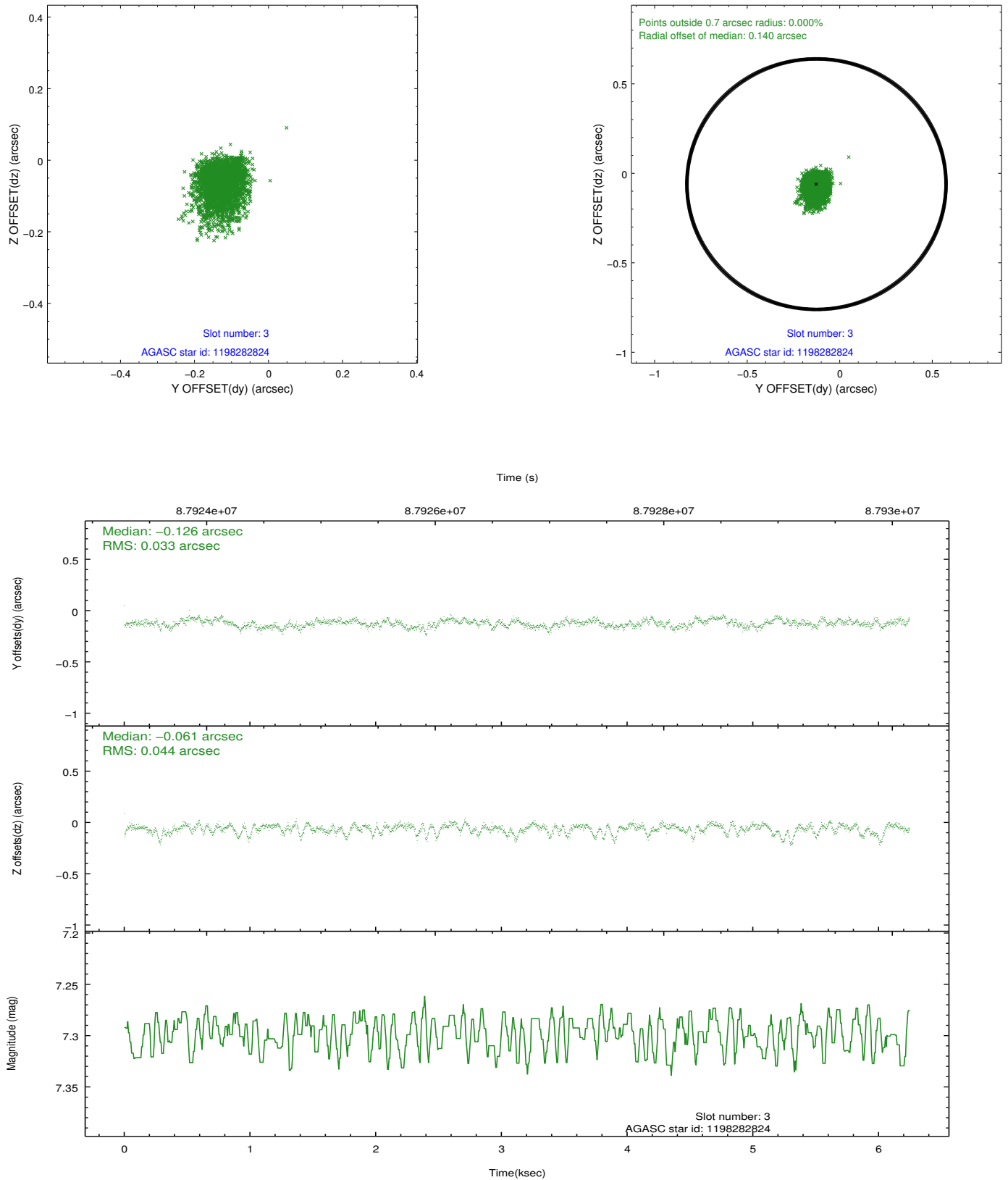


Slot Statistics

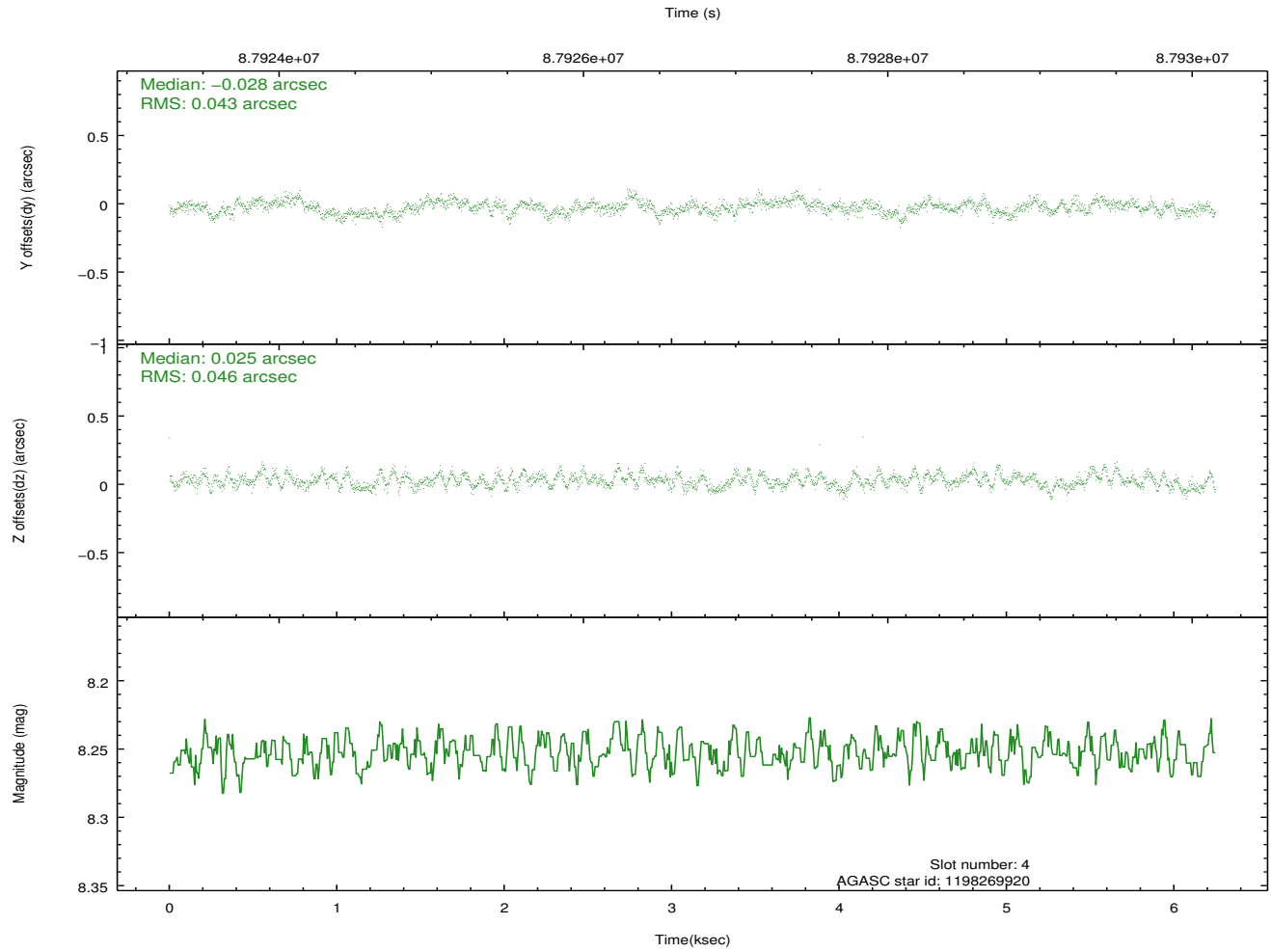
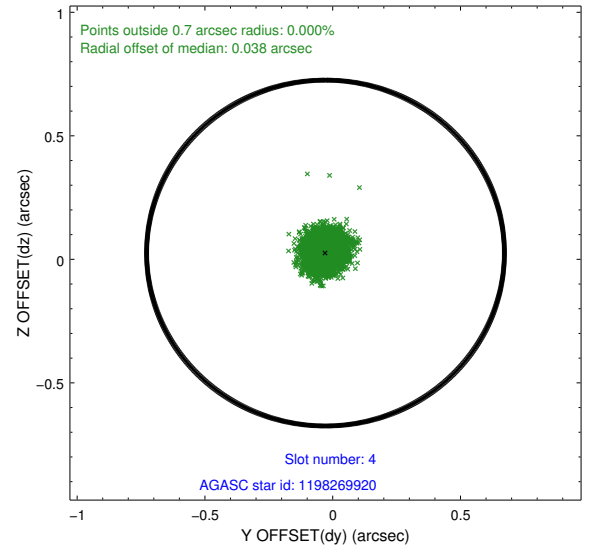
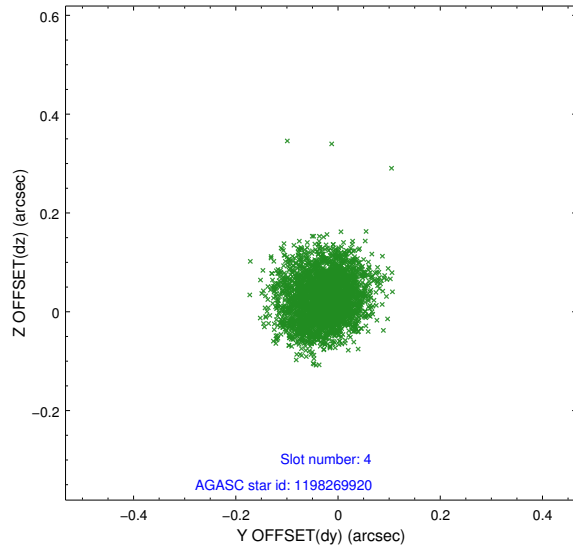
slot	status	id	mag	n_pts	med_dy	med_dz	dr1	dr2	ra	dec	mean_y	mean_z
0	FID	ACIS-S-2	7.11	1524	-0.046	-0.000	0.008	0.013	0.000000	0.000000	-754.04	-1726.59
1	FID	ACIS-S-4	7.21	1524	-0.008	0.022	0.006	0.012	0.000000	0.000000	2158.83	180.99
2	FID	ACIS-S-5	7.23	1524	0.023	-0.013	0.008	0.014	0.000000	0.000000	-1805.62	175.64
3	GUIDE	1198282824	7.30	3048	-0.126	-0.061	0.056	0.099	18.044095	-73.907062	-1155.85	-1639.93
4	GUIDE	1198269920	8.25	3047	-0.028	0.025	0.069	0.105	20.316466	-73.033728	1131.96	1531.70
5	GUIDE	1198264832	9.53	3046	0.043	0.036	0.103	0.173	20.353668	-72.974637	1173.42	1745.23
6	GUIDE	1198270632	10.27	2976	0.091	-0.023	0.151	0.243	18.734673	-73.773529	-475.78	-1141.09
7	GUIDE	1198283072	10.46	3045	0.026	0.027	0.149	0.239	18.377128	-73.336207	-876.81	423.70

2.4 Star Slots

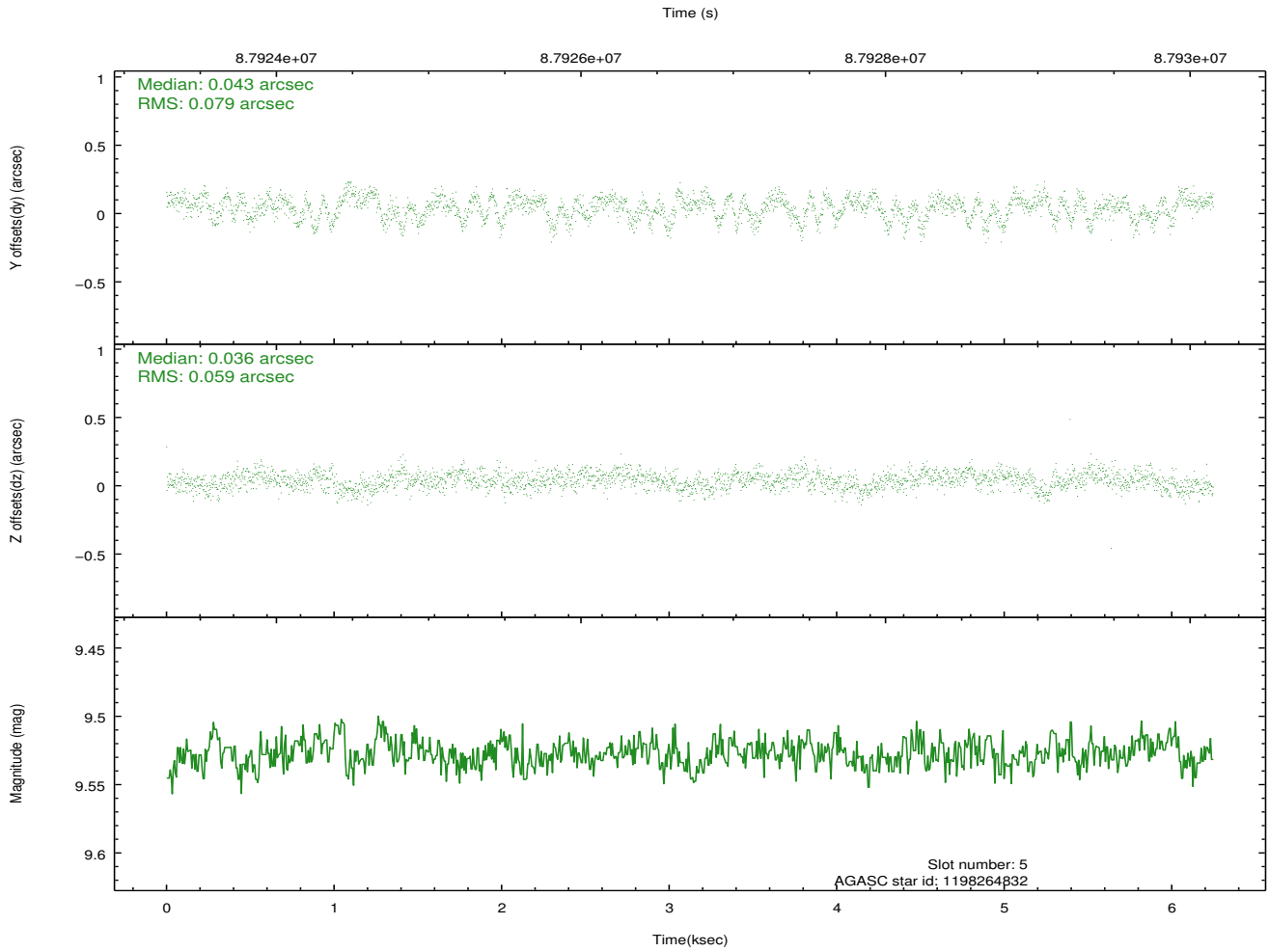
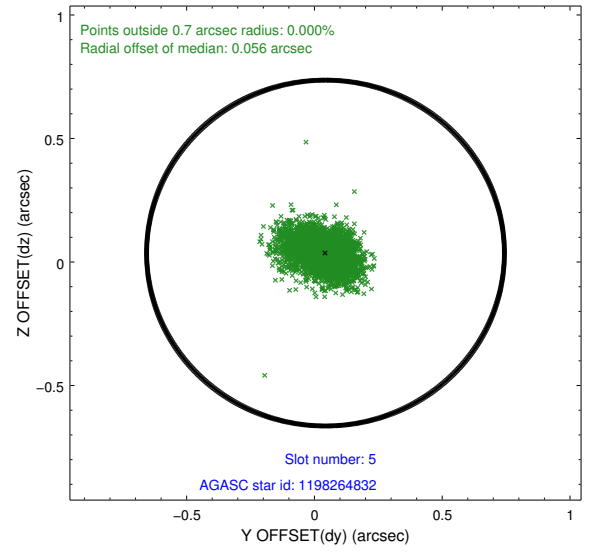
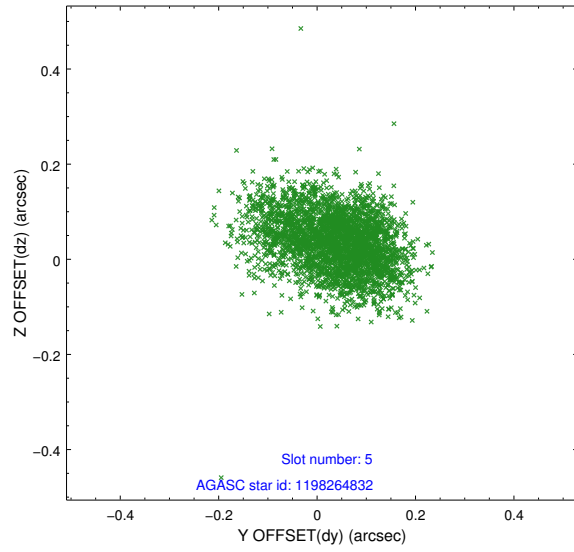
2.4.1 Slot 3



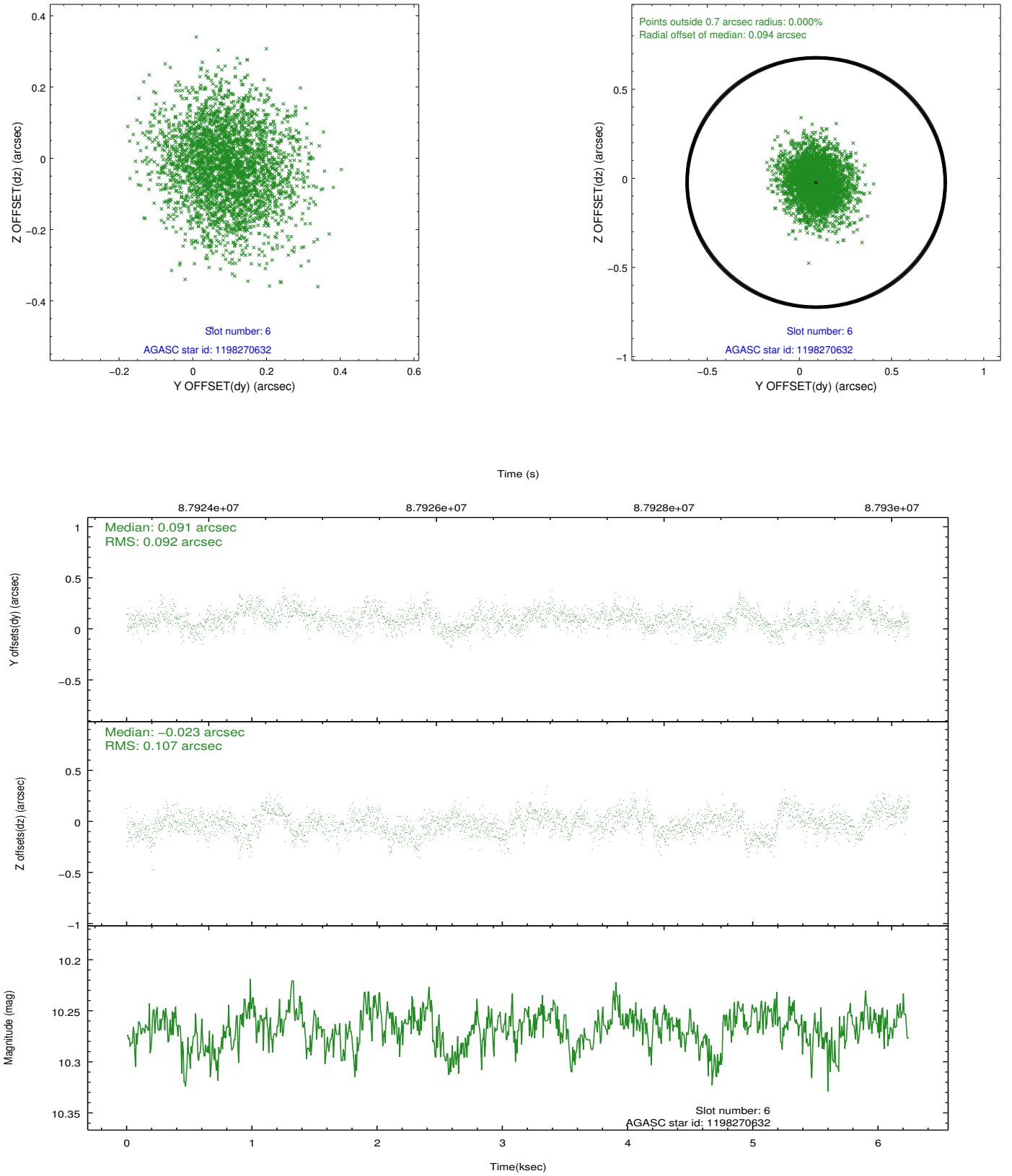
2.4.2 Slot 4



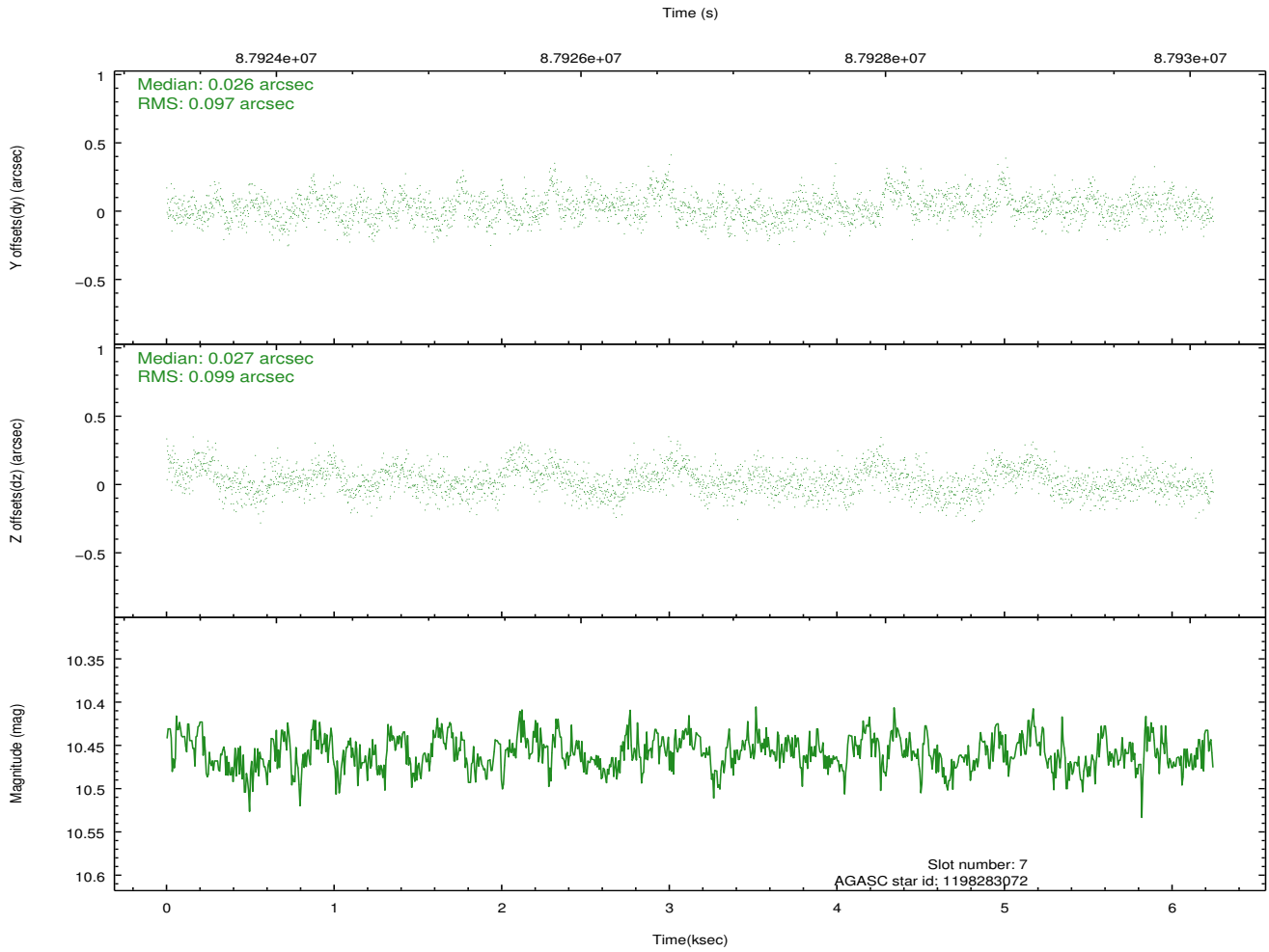
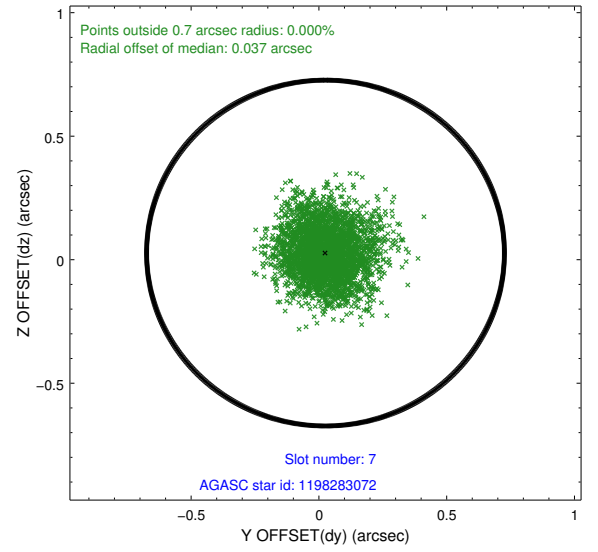
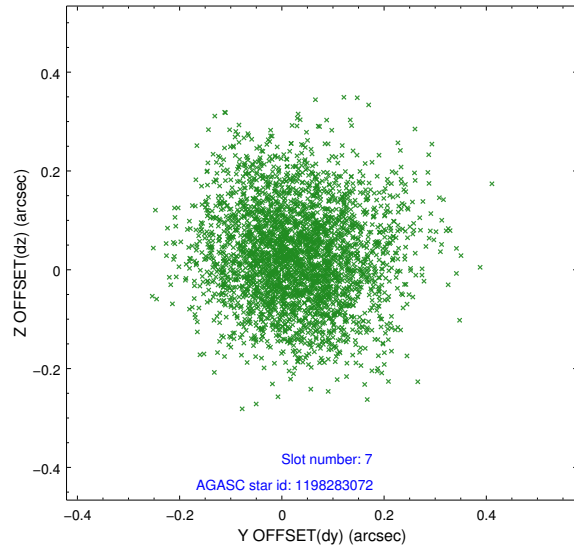
2.4.3 Slot 5



2.4.4 Slot 6

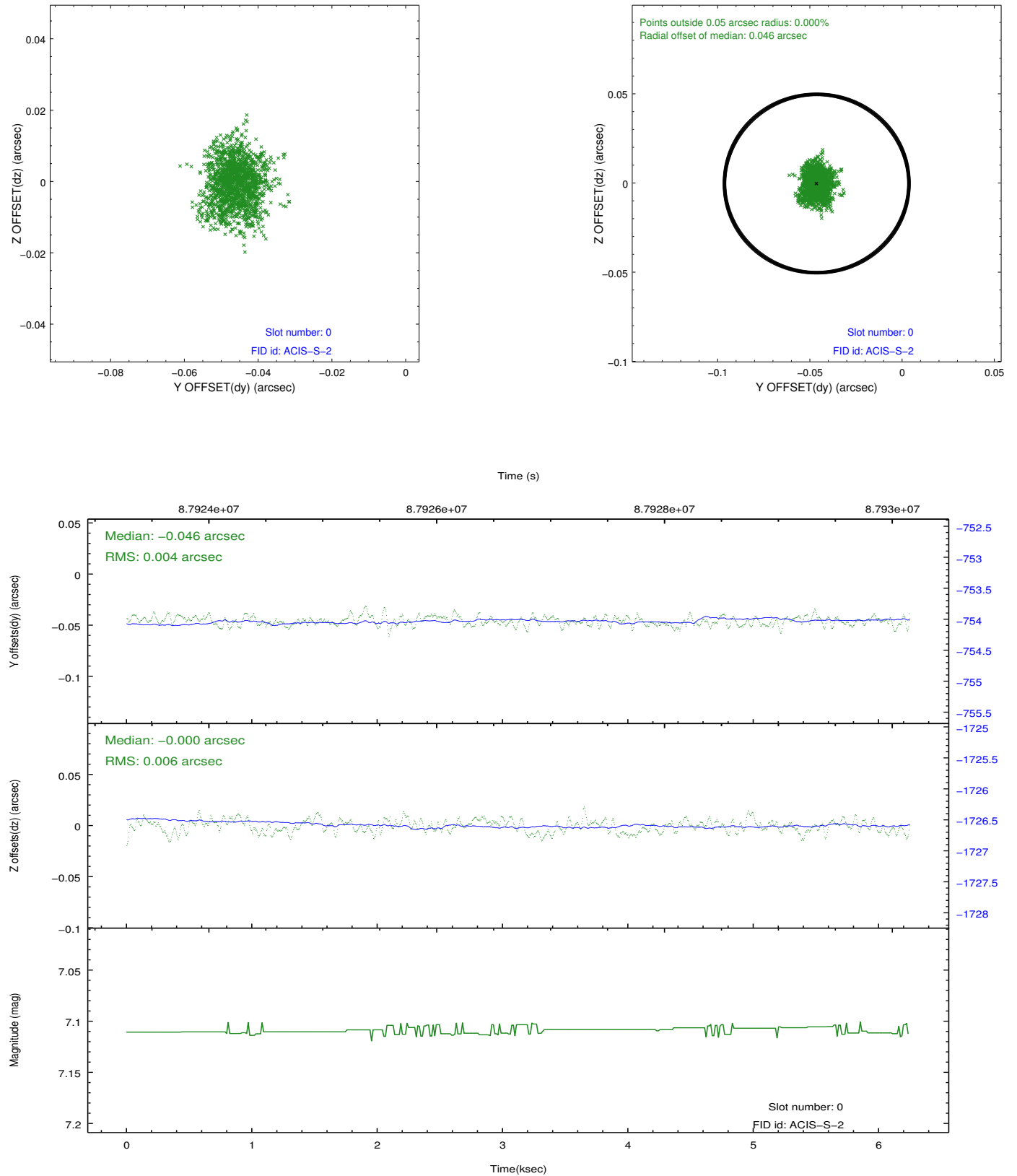


2.4.5 Slot 7

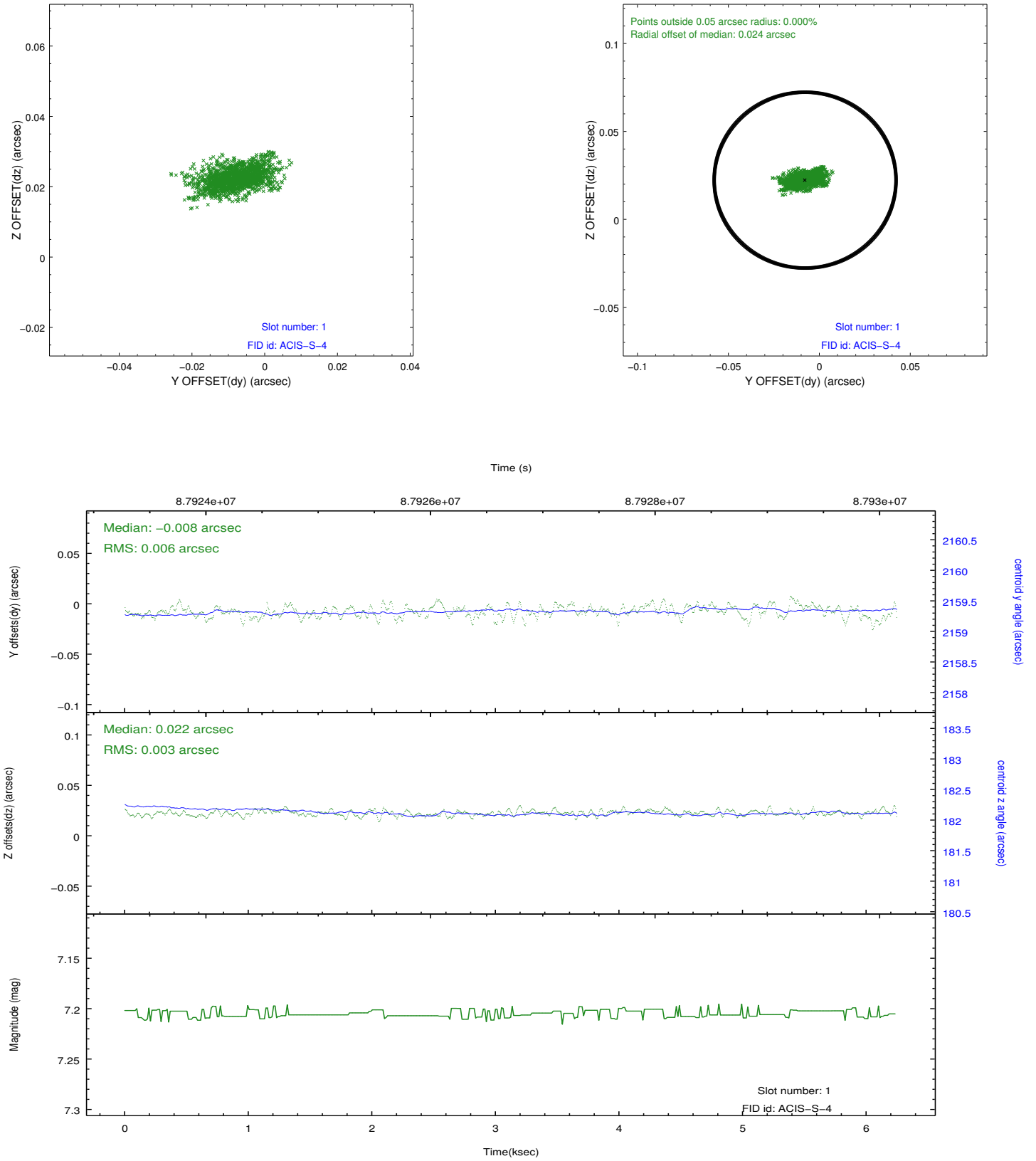


2.5 FID Slots

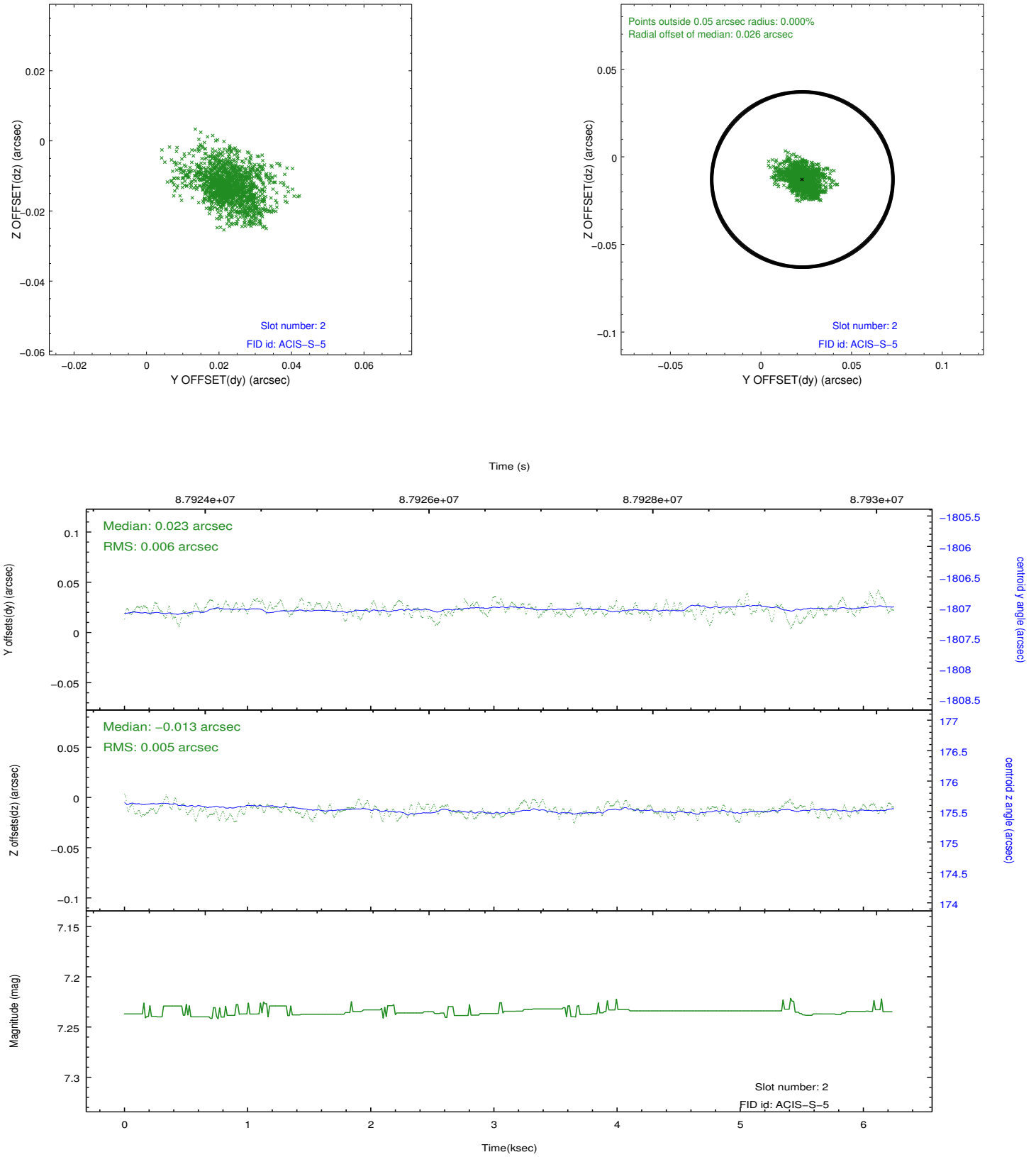
2.5.1 Slot 0



2.5.2 Slot 1



2.5.3 Slot 2



A Summary

A.1 Status

V&V Scientist	Joy Nichols
V&V Date (YYYY-MM-DD)	2012.09.04
V&V Edition	1
V&V Disposition and Status	OK
V&V Charge Time	6.244

A.2 Comments