

# V&V Reference Report

## L2 ASCDS Version : 7.6.10

Observation 1024 - L2 Version 001  
Chandra X-Ray Center

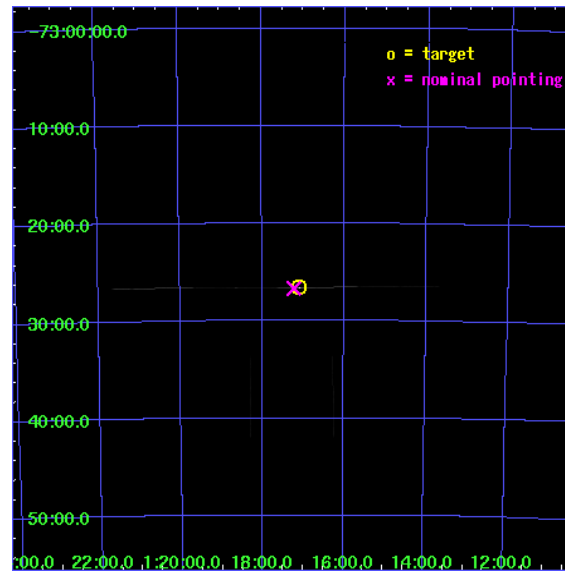
L2 Processing Date : Jun 12 2007

## Contents

<b>1</b>	<b>Front</b>	<b>2</b>
<b>2</b>	<b>OBI</b>	<b>3</b>
2.1	OBI . . . . .	3
2.1.1	Images . . . . .	3
2.1.2	Bias . . . . .	3
2.1.3	Parameters . . . . .	4
2.1.4	Events . . . . .	4
2.2	Compared Parameters . . . . .	5
2.3	Aspect . . . . .	6
2.4	Star Slots . . . . .	9
2.4.1	Slot 3 . . . . .	9
2.4.2	Slot 4 . . . . .	10
2.4.3	Slot 5 . . . . .	11
2.4.4	Slot 6 . . . . .	12
2.4.5	Slot 7 . . . . .	13
2.5	FID Slots . . . . .	14
2.5.1	Slot 0 . . . . .	14
2.5.2	Slot 1 . . . . .	15
2.5.3	Slot 2 . . . . .	16
<b>A</b>	<b>Summary</b>	<b>17</b>
A.1	Status . . . . .	17
A.2	Comments . . . . .	17

# 1 Front

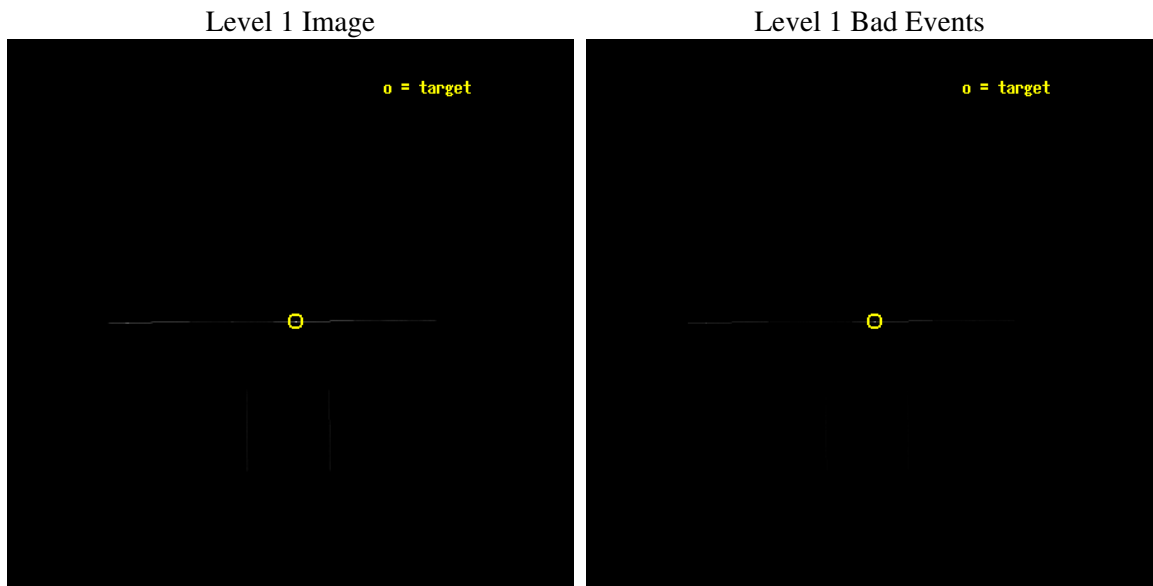
seq_num	400102
obs_id	1024
title	HIGH RESOLUTION UV/X-RAY SPECTROSCOPY OF SMC X-1
observer	Dr. Saeqa Vrtilek
object	SMC X-1
ra_targ	19.271667
dec_targ	-73.442944
ra_nom	19.305434569611
dec_nom	-73.444786530827
roll_nom	359.56075034834
revision	3
ontime	6240.25
livetime	6215.8740234375
ontime2	6240.25
ontime3	6240.25
ontime5	6240.25
ontime6	6240.25
ontime7	6240.25
ontime8	6240.25
l2events	481711



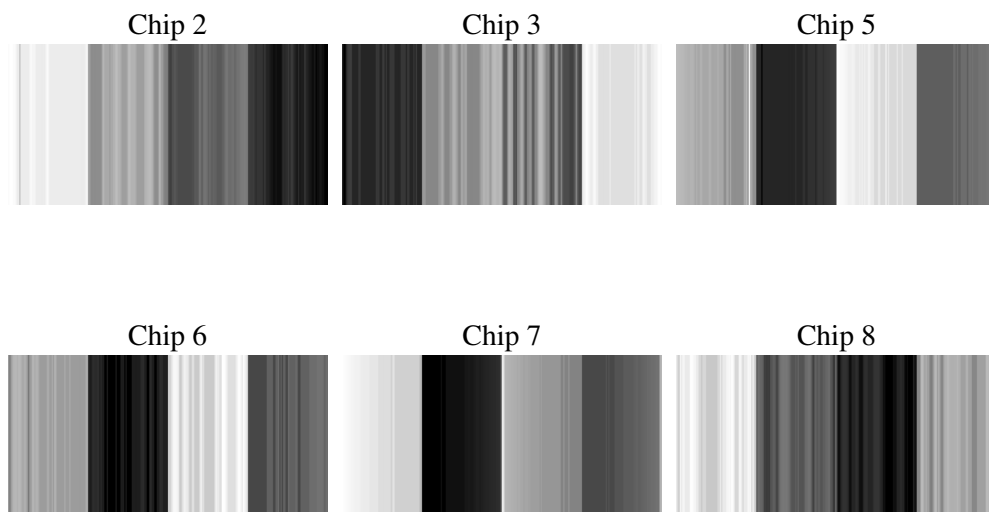
## 2 OBI

### 2.1 OBI

#### 2.1.1 Images



#### 2.1.2 Bias



### 2.1.3 Parameters

obi_num	0
ascdsver	7.6.10
caldsver	3.4.0
date	2007-06-12T09:01:31
revision	3

sched_exp_time	6000.000000
ontime	6240.25
ontime2	6240.25
ontime3	6240.25
ontime5	6240.25
ontime6	6240.25
ontime7	6240.25
ontime8	6240.25
l1events	641661

### 2.1.4 Events

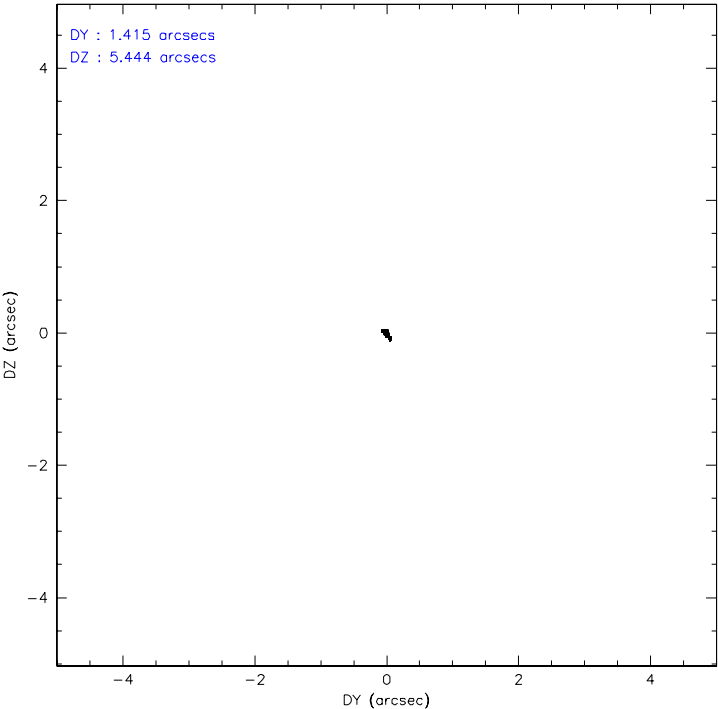
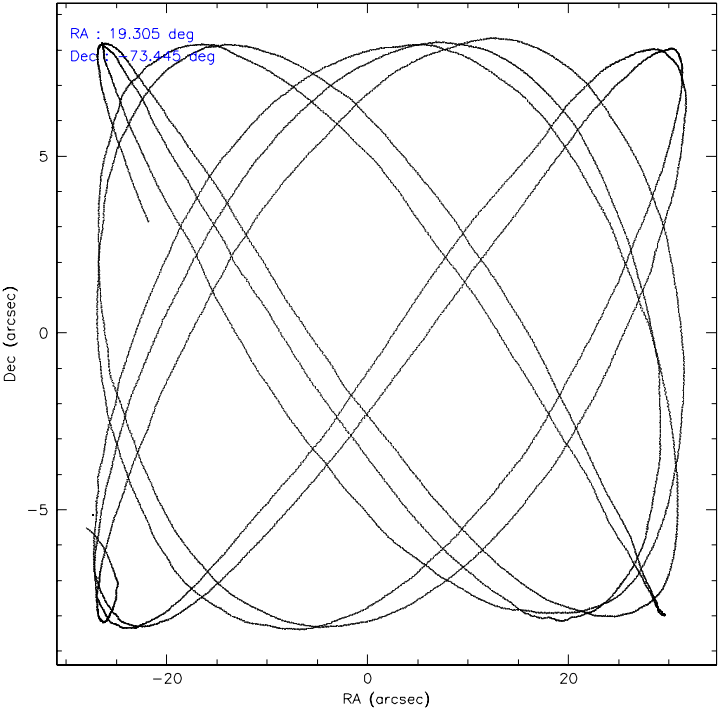
	ccd 2	ccd 3	ccd 5	ccd 6	ccd 7	ccd 8
level 1 events	12520	13302	94195	18775	477448	25421
rejected events	3547	3612	31219	5747	82599	6816
rejected %	28%	27%	33%	30%	17%	26%

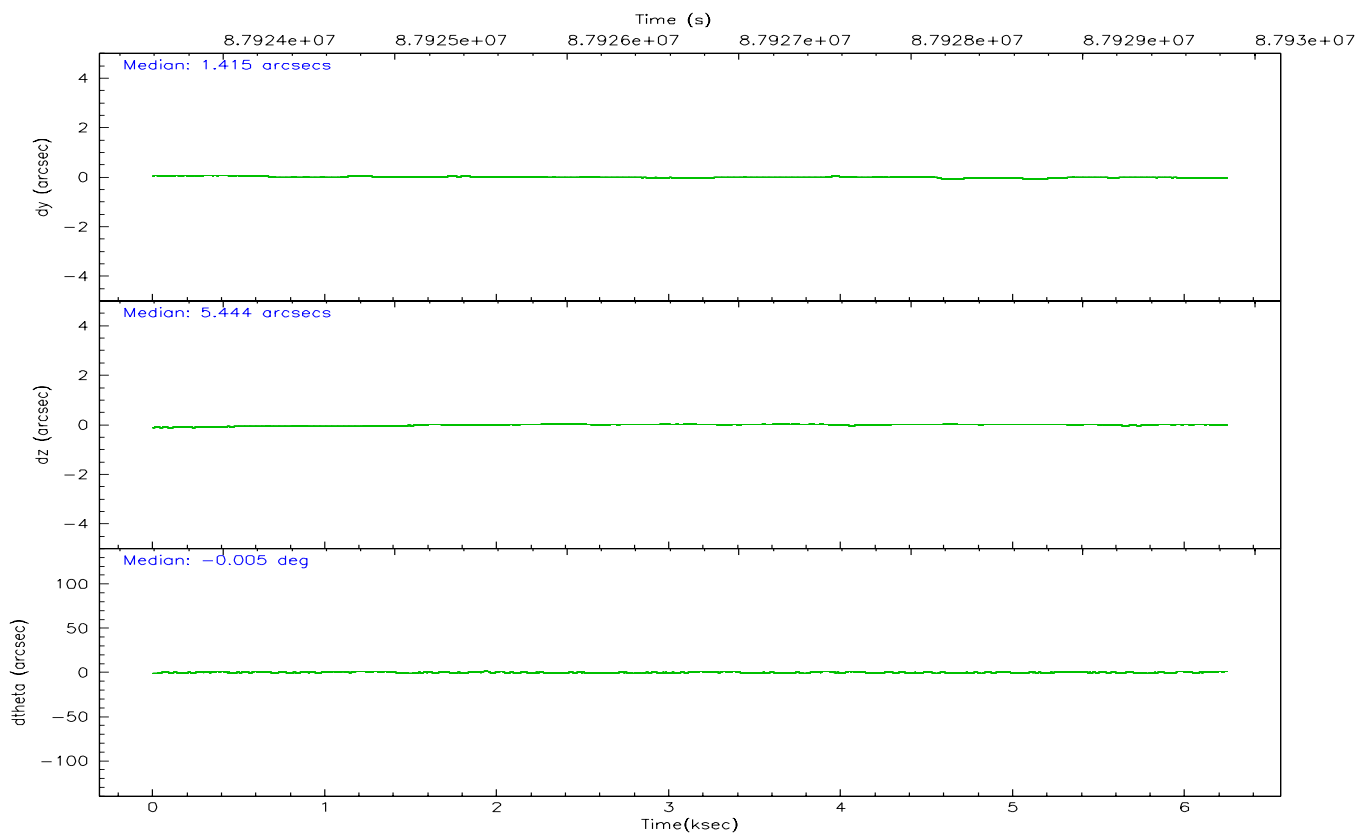
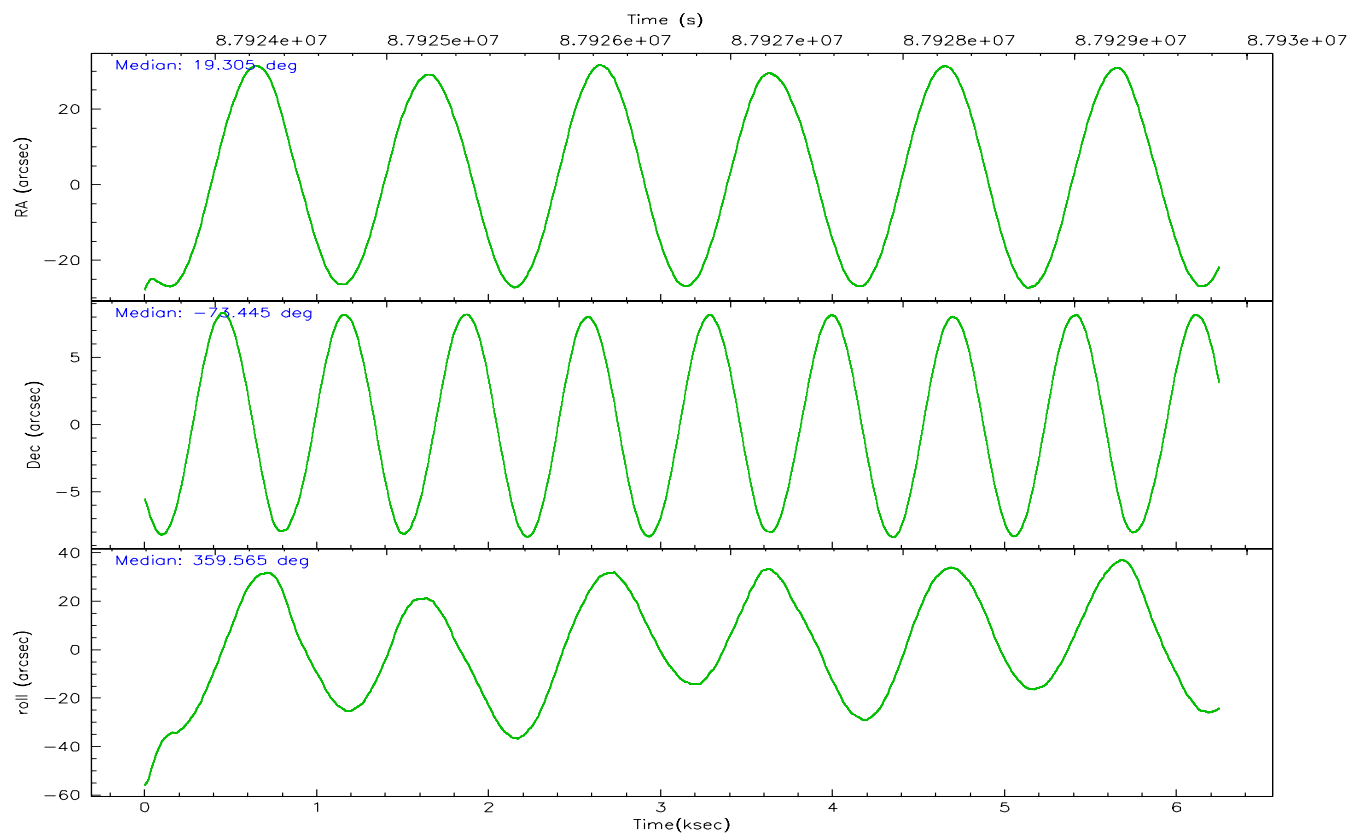
	ccd 2	ccd 3	ccd 5	ccd 6	ccd 7	ccd 8
grade 0 events	1323	1324	18580	1991	88835	4196
	10%	9%	19%	10%	18%	16%
grade 1 events	26	31	89	38	9806	58
	0%	0%	0%	0%	2%	0%
grade 2 events	6189	6622	26869	11140	109860	11262
	49%	49%	28%	59%	23%	44%
grade 3 events	1109	1280	3039	1060	42794	1942
	8%	9%	3%	5%	8%	7%
grade 4 events	1097	1086	2974	1051	41492	1801
	8%	8%	3%	5%	8%	7%
grade 5 events	1294	1408	4461	1553	38186	2063
	10%	10%	4%	8%	7%	8%
grade 6 events	1482	1551	38183	1942	146475	4099
	11%	11%	40%	10%	30%	16%
grade 7 events	0	0	0	0	0	0
	0%	0%	0%	0%	0%	0%

## 2.2 Compared Parameters

Parameter	Planned	Actual	Parameter	Planned	Actual
Instrument	ACIS	ACIS	Obspar format version number	6	6
Detector	ACIS-235678	ACIS-235678	Obspar file type	PREDICTED	ACTUAL
Grating	NONE	NONE	Obspar update status	NONE	UPDATED
Data mode	CC33_FAINT	CC33_FAINT	Number of optional ACIS chips dropped	0	0
Observation mode	POINTING	POINTING	On-chip summing requested	N	N
Pointing RA	19.222492	19.30543456961144	Subarray requested	NONE	NONE
Pointing Dec	-73.458455	-73.44478653082723	Alternating exposures requested	N	N
Pointing Roll	359.324630	359.5607503483377	Primary exposure time	0.000000	0
SIM focus pos (mm)	-0.684267	-0.6828225247311905			
SIM defocus (mm)	0	0.001444936568705701			
SIM translation stage pos (mm)	-190.132523	-190.1400660498719			
SIM translation stage offset (mm)	0	0.00754346686406393			
Phase constraints	Y	Y			
Phase period	3.892000	3.892000			
Phase epoch	50141.466800	50141.466800			
Phase start	0.000000	0.000000			
Phase end	0.800000	0.800000			
Phase start error	0.050000	0.050000			
Phase end error	0.050000	0.050000			
Observation start time	87923839.184000	87922855.331012			
Observation start date	2000-10-14T15:16:15	2000-10-14T15:00:55			
Observation end time	87929839.184000	87930420.343798			
Observation end date	2000-10-14T16:56:15	2000-10-14T17:07:00			
Read mode	CONTINUOUS	CONTINUOUS			

### 2.3 Aspect





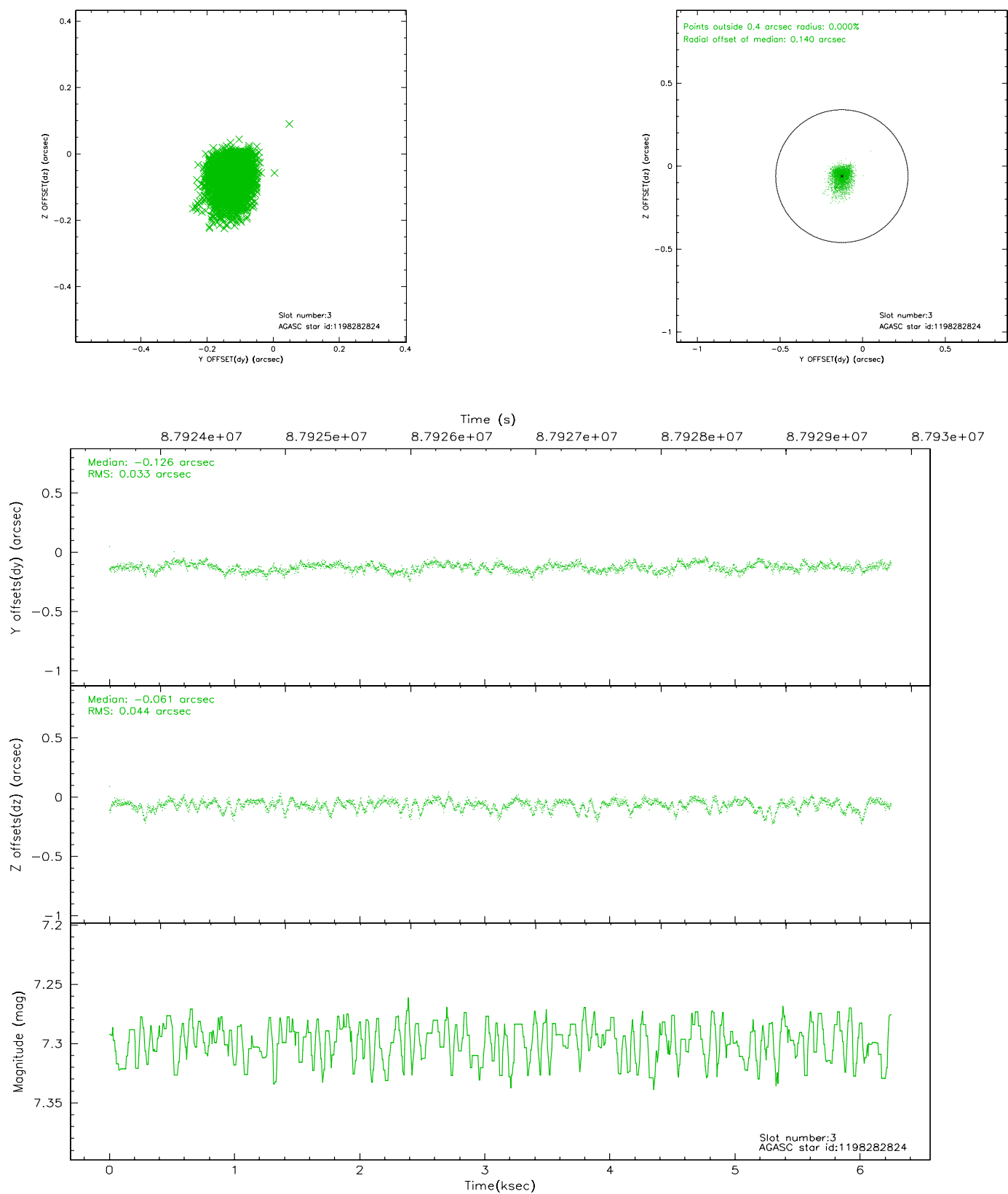
### Slot Statistics

slot	status	id	mag	n_pts	med_dy	med_dz	dr1	dr2	ra	dec	mean_y	mean_z
0	FID	ACIS-S-2	7.11	1524	-0.035	0.023	0.007	0.012	0.000000	0.000000	-754.02	-1726.54
1	FID	ACIS-S-4	7.21	1524	-0.050	0.011	0.006	0.010	0.000000	0.000000	2158.79	181.00
2	FID	ACIS-S-5	7.23	1524	0.054	-0.025	0.007	0.012	0.000000	0.000000	-1805.59	175.65
3	GUIDE	1198282824	7.30	3048	-0.126	-0.061	0.056	0.099	18.044095	-73.907062	-1155.85	-1639.93
4	GUIDE	1198269920	8.25	3047	-0.028	0.025	0.069	0.105	20.316466	-73.033728	1131.96	1531.70
5	GUIDE	1198264832	9.53	3046	0.043	0.036	0.103	0.173	20.353668	-72.974637	1173.42	1745.23
6	GUIDE	1198270632	10.27	2976	0.091	-0.023	0.151	0.243	18.734673	-73.773529	-475.78	-1141.09
7	GUIDE	1198283072	10.46	3045	0.026	0.027	0.149	0.239	18.377128	-73.336207	-876.81	423.70

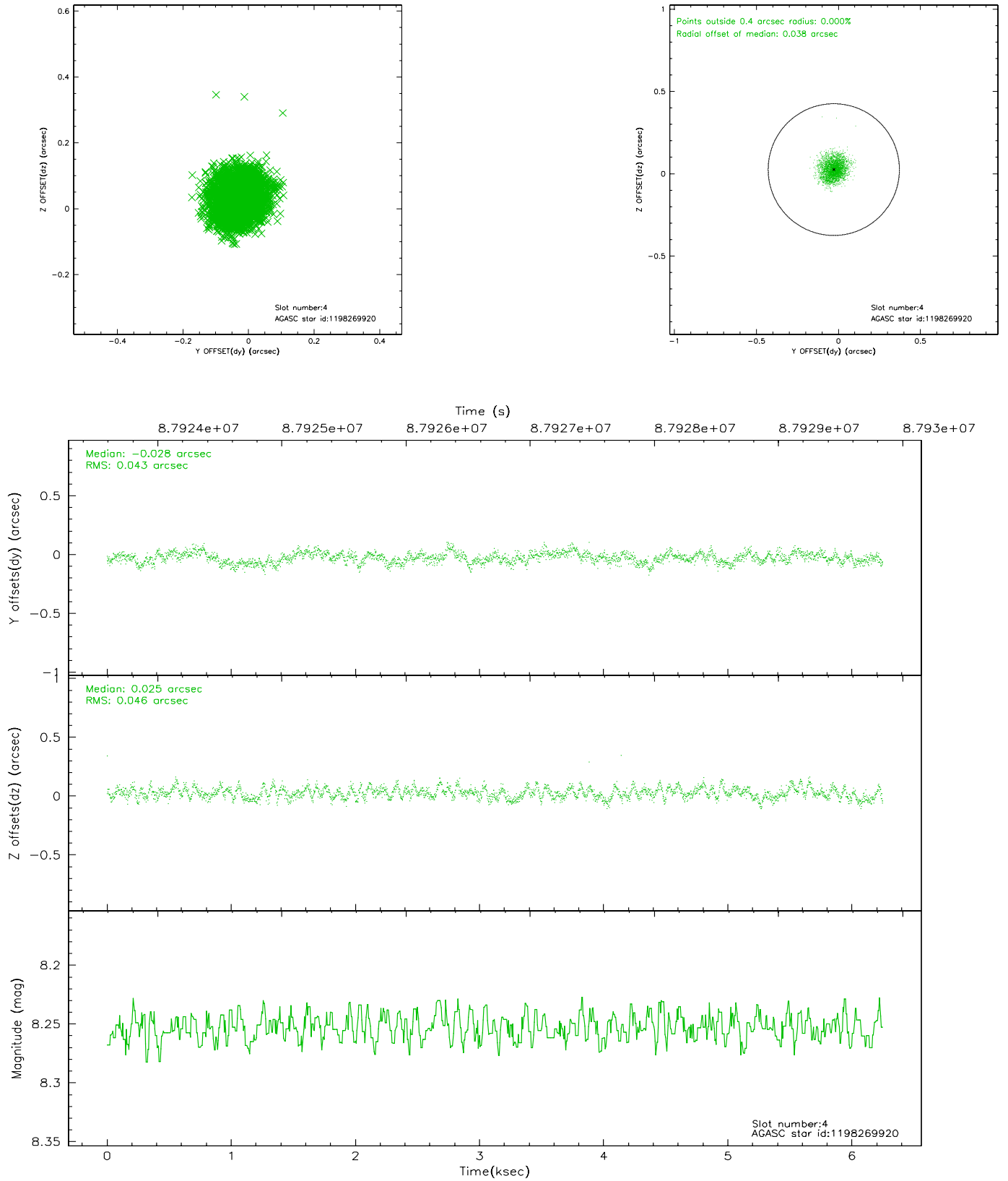


## 2.4 Star Slots

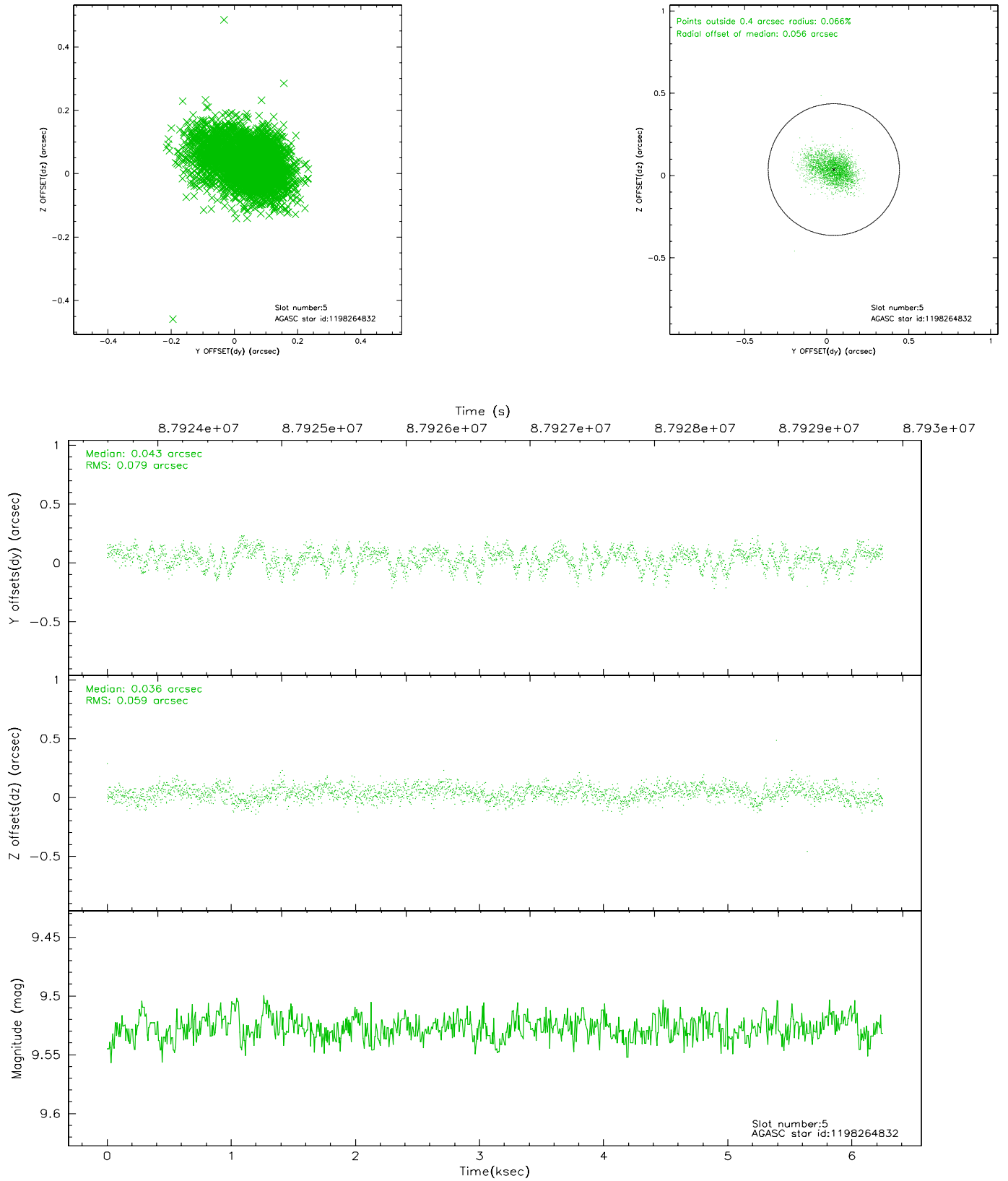
### 2.4.1 Slot 3



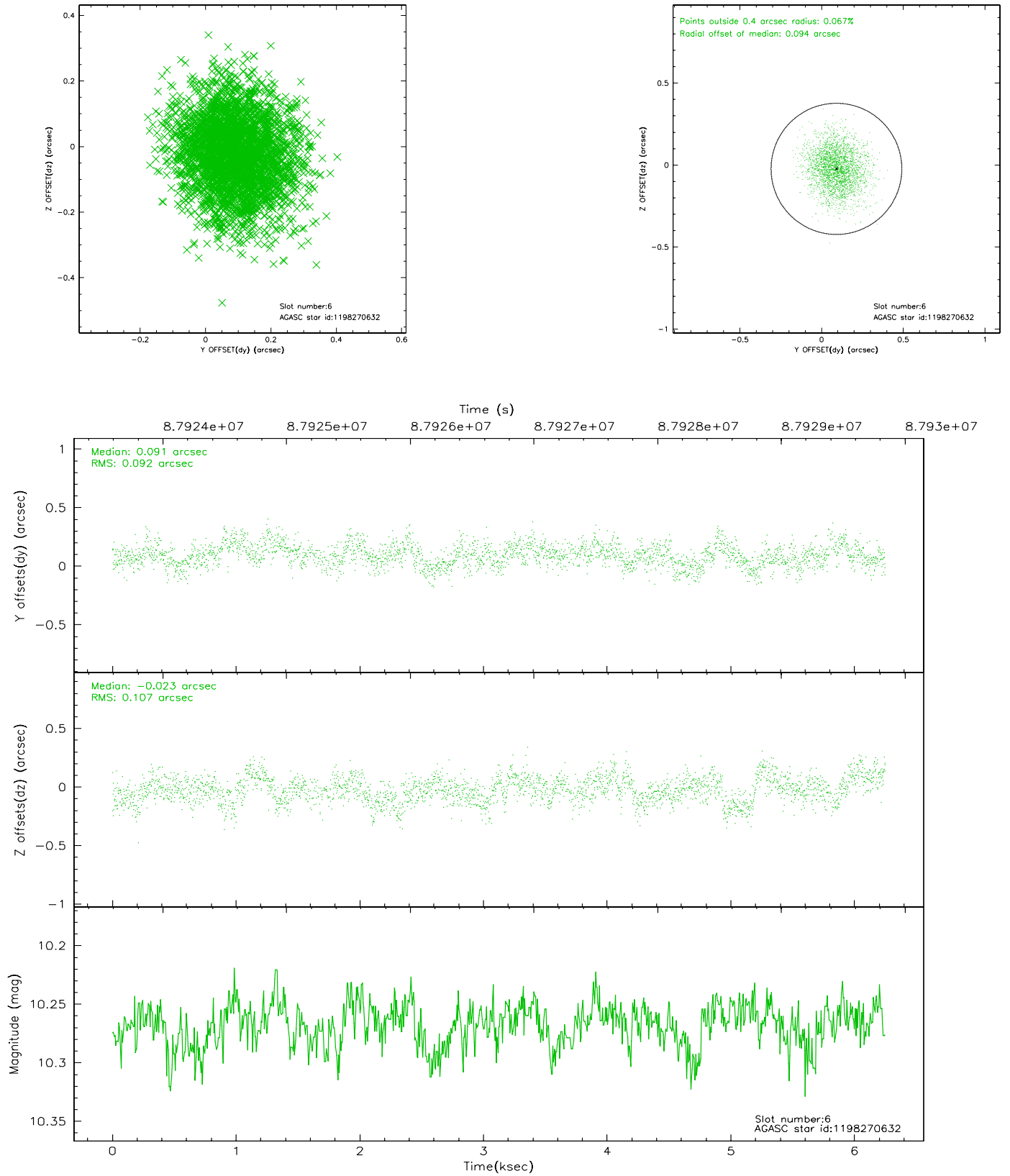
## 2.4.2 Slot 4



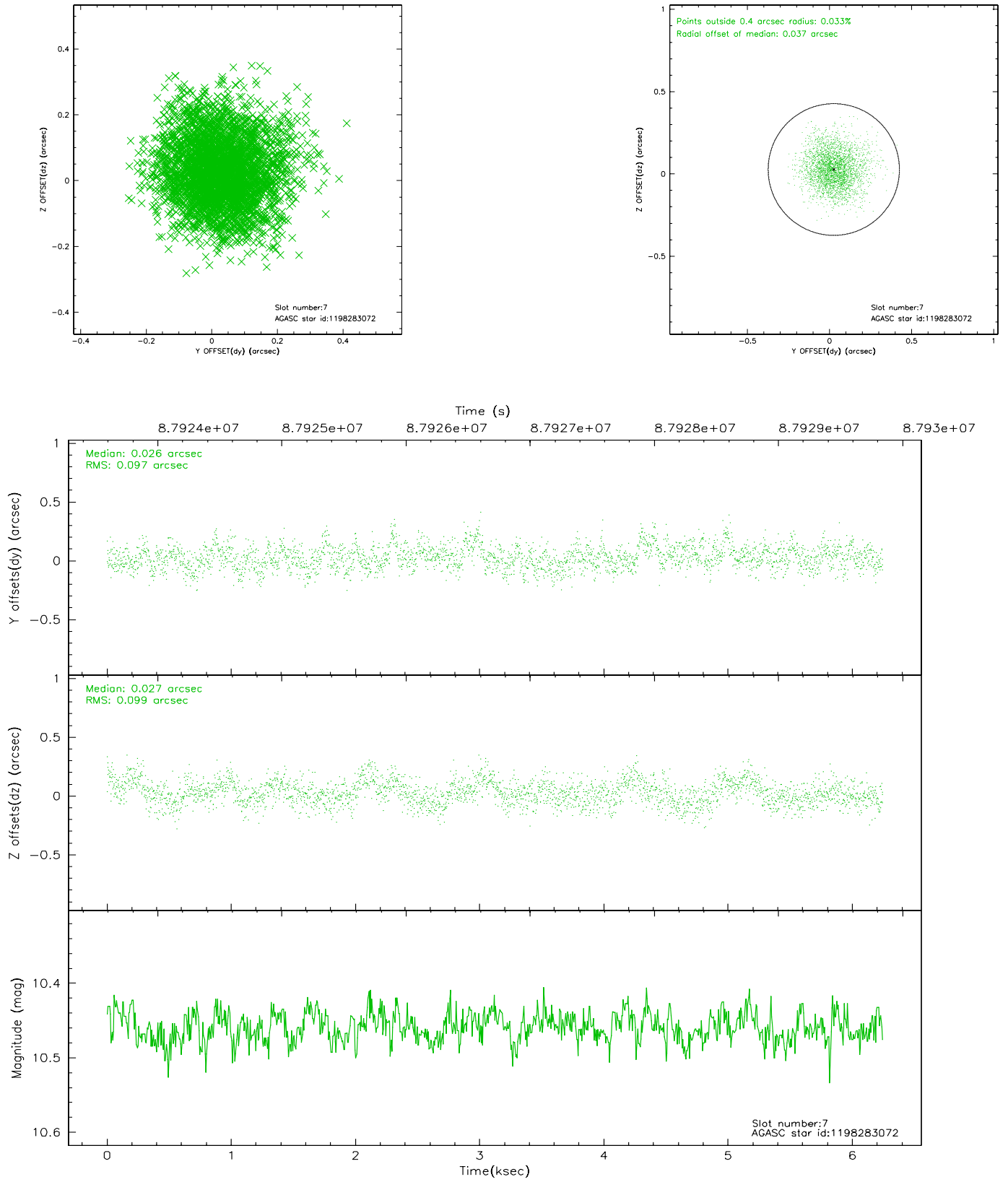
### 2.4.3 Slot 5



## 2.4.4 Slot 6

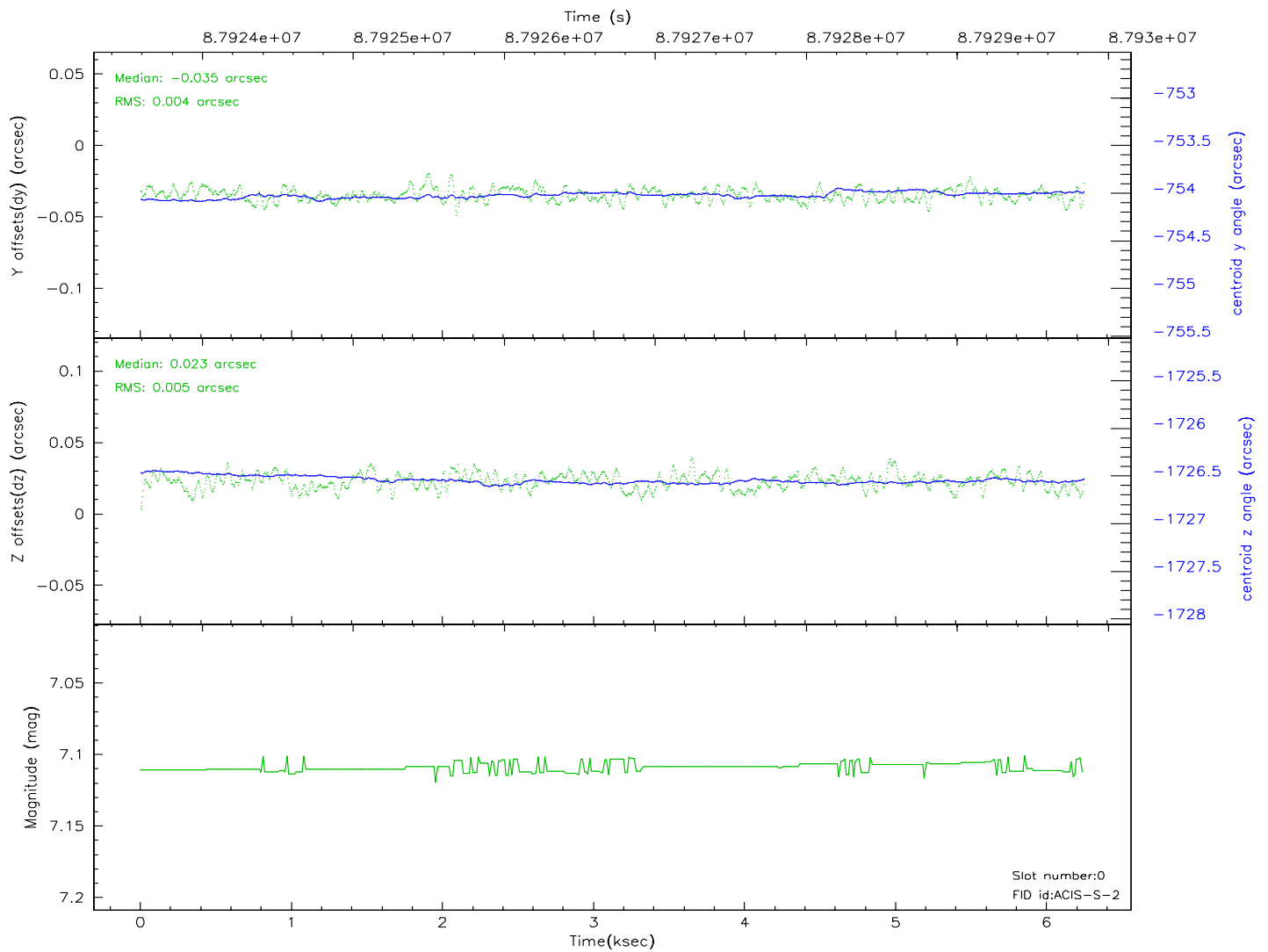
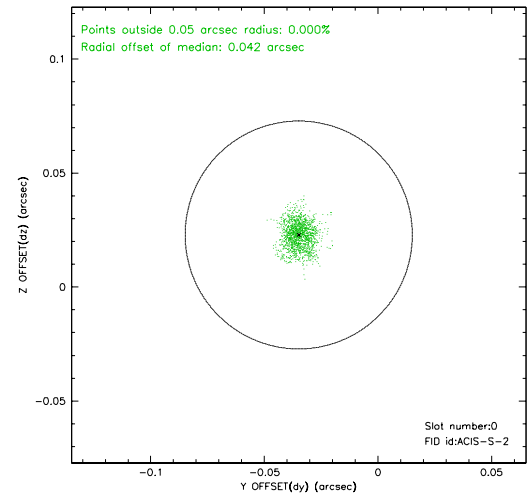
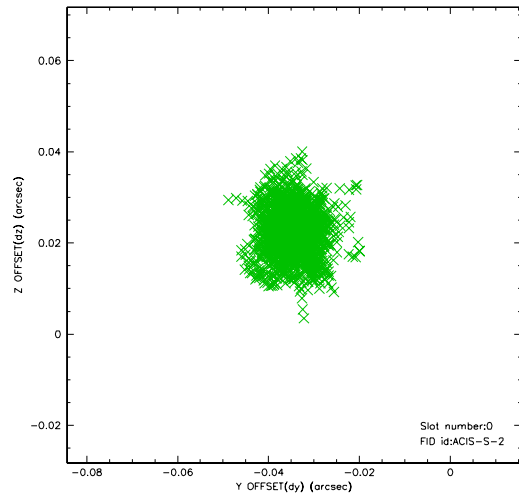


## 2.4.5 Slot 7

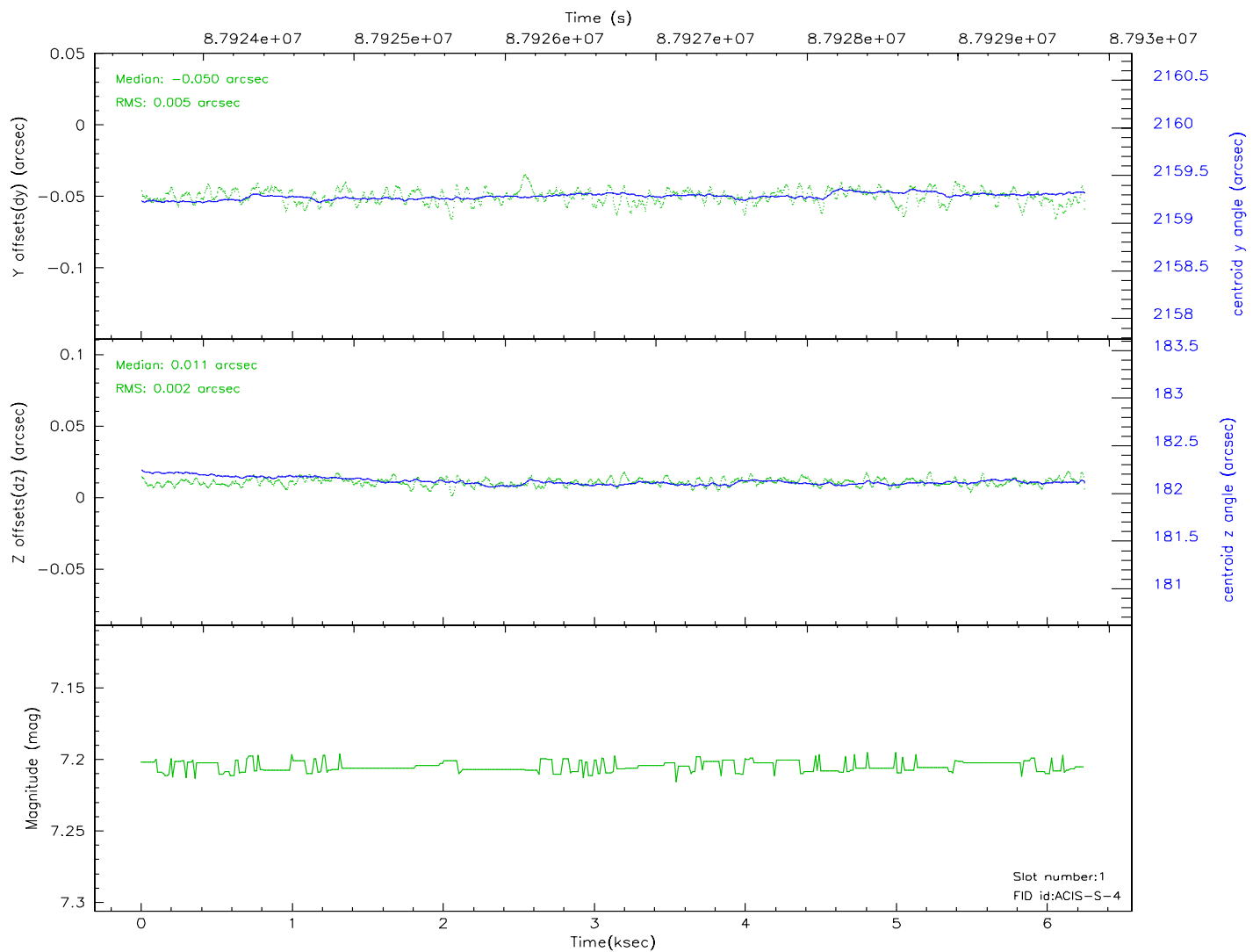
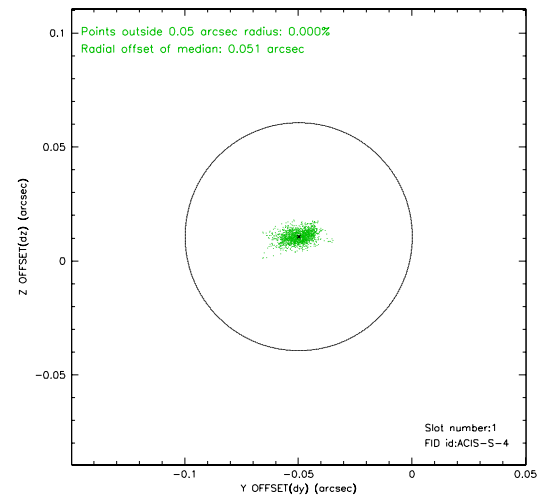
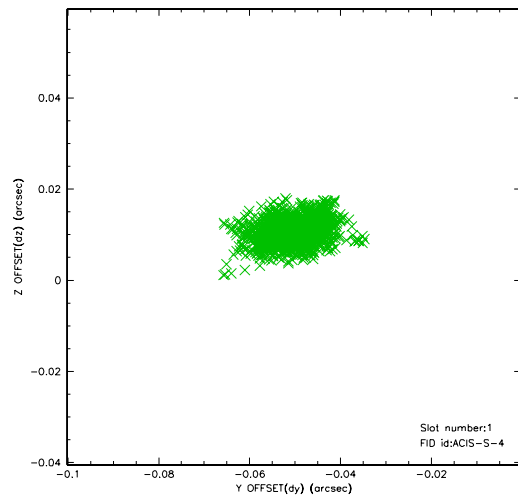


## 2.5 FID Slots

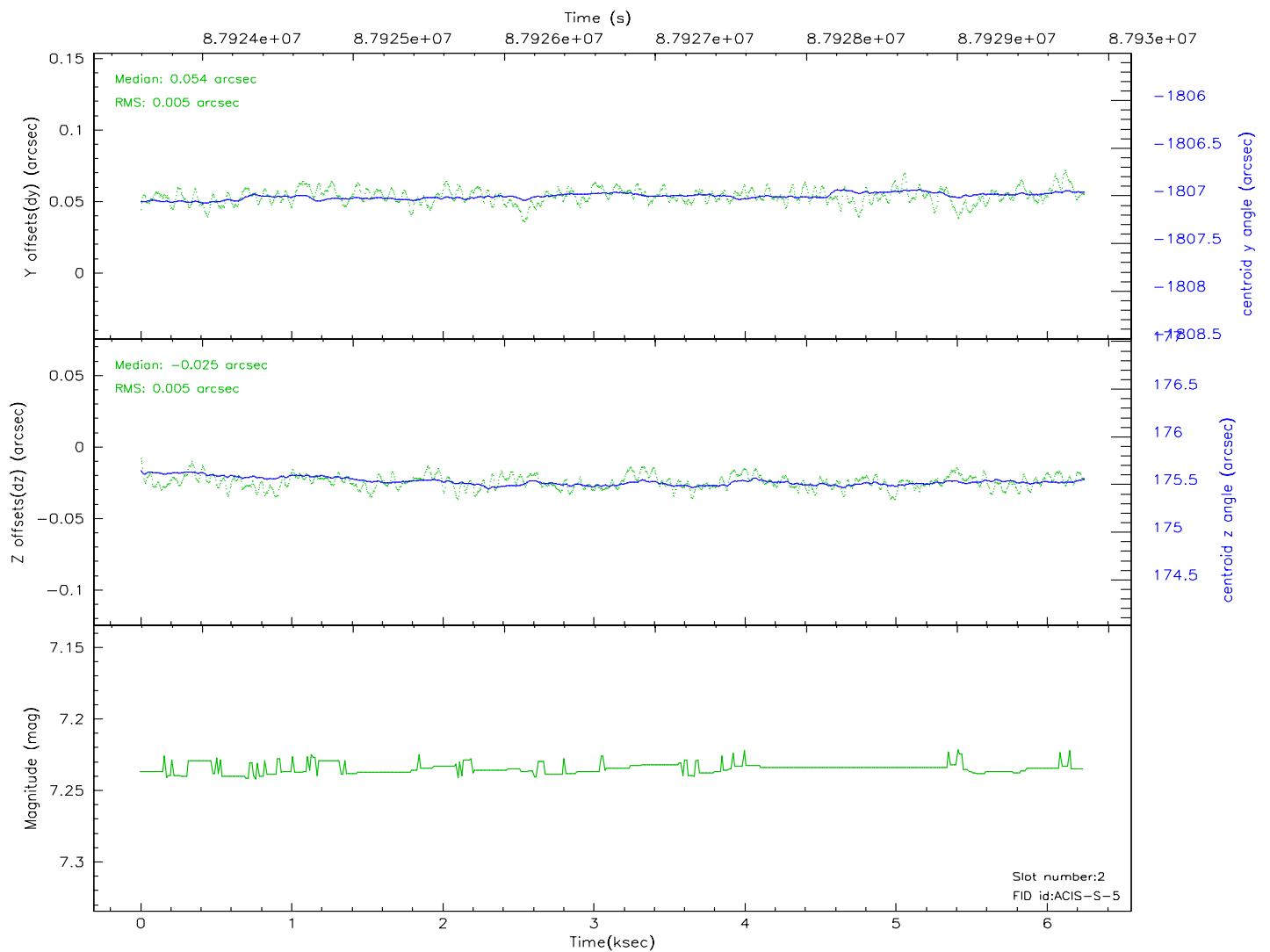
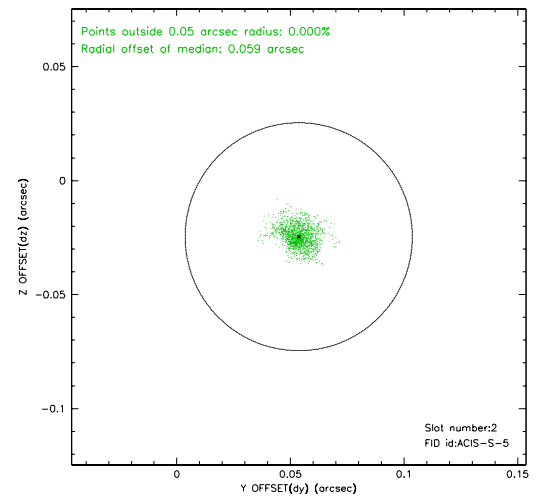
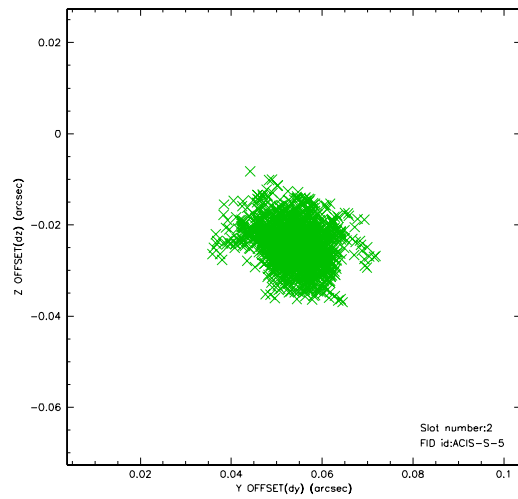
### 2.5.1 Slot 0



## 2.5.2 Slot 1



## 2.5.3 Slot 2





## A Summary

### A.1 Status

V&V Scientist	David Huenemoerder
V&V Date (YYYY-MM-DD)	2007.06.12
V&V Edition	1
V&V Disposition and Status	OK
V&V Charge Time	6.244

### A.2 Comments