

V&V Reference Report

L2 ASCDS Version : 8.4.5

Observation 3428 - L2 Version 4
Chandra X-Ray Center

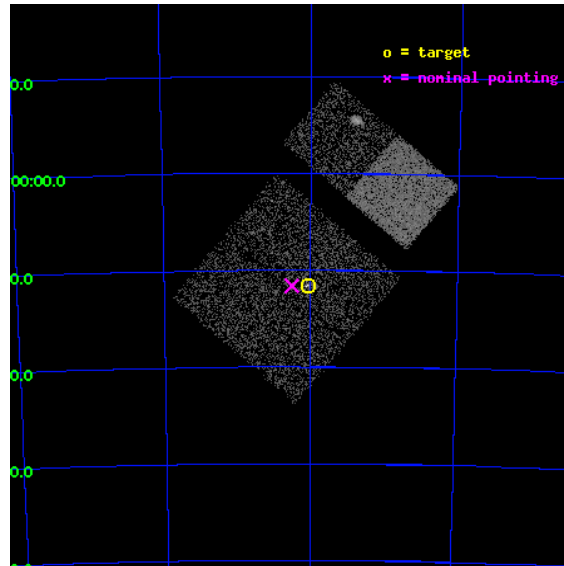
L2 Processing Date : Oct 2 2012

Contents

1	Front	2
2	OBI	3
2.1	OBI	3
2.1.1	Images	3
2.1.2	Bias	3
2.1.3	Parameters	4
2.1.4	Events	4
2.2	Compared Parameters	5
2.3	Aspect	6
2.4	Star Slots	9
2.4.1	Slot 3	9
2.4.2	Slot 4	10
2.4.3	Slot 5	11
2.4.4	Slot 6	12
2.4.5	Slot 7	13
2.5	FID Slots	14
2.5.1	Slot 0	14
2.5.2	Slot 1	15
2.5.3	Slot 2	16
A	Summary	17
A.1	Status	17
A.2	Comments	17

1 Front

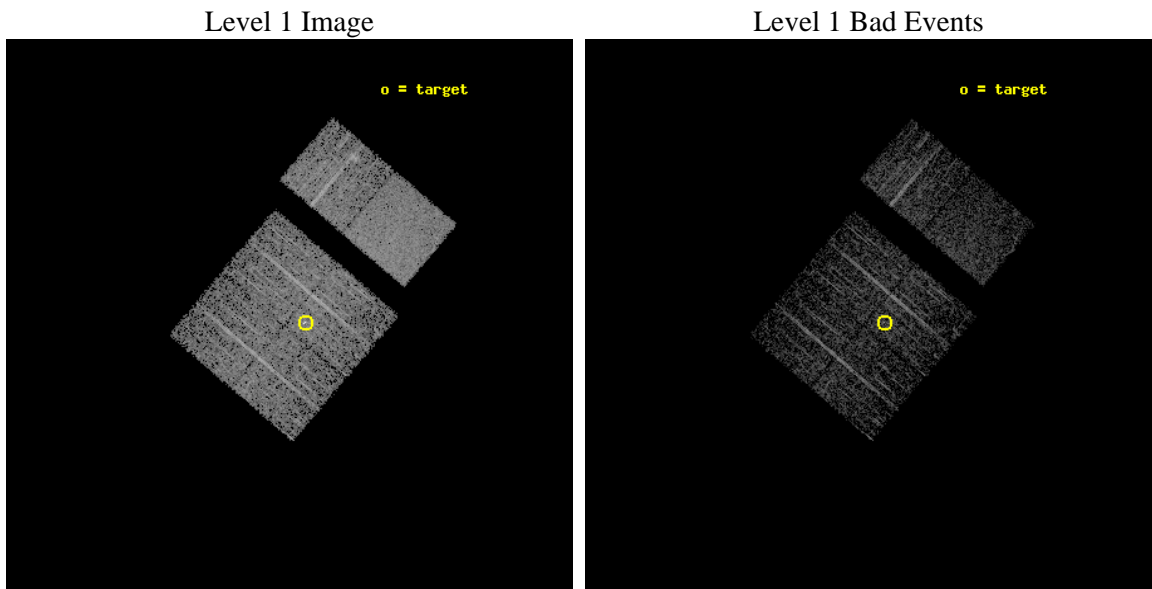
seq_num	200087	Sequence number
obs_id	3428	Observation id
title	OBSERVATION OF SCO-CEN OUTLYERS	Proposal title
observer	Professor Gordon Garmire	Principal investigator
object	HD104237	Source name
dtcycle	0	
cycle	P	events from which exps? Prim/Second/Both
ra_targ	180.02125	Observer's specified target RA [deg]
dec_targ	-78.193056	Observer's specified target Dec [deg]
ra_nom	180.15826084037	Nominal RA [deg]
dec_nom	-78.193567804015	Nominal Dec [deg]
roll_nom	40.488506268333	Nominal Roll [deg]
revision	4	Processing version of data
ontime	2860.8000026494	Sum of GTIs [s]
livetime	2824.5748304489	Livetime [s]
ontime0	2860.8000026494	Sum of GTIs [s]
ontime1	2860.8000026494	Sum of GTIs [s]
ontime2	2860.8000026494	Sum of GTIs [s]
ontime3	2860.8000026494	Sum of GTIs [s]
ontime6	2860.8000026494	Sum of GTIs [s]
ontime7	2860.8000026494	Sum of GTIs [s]
l2events	19965	Number of level 2 events



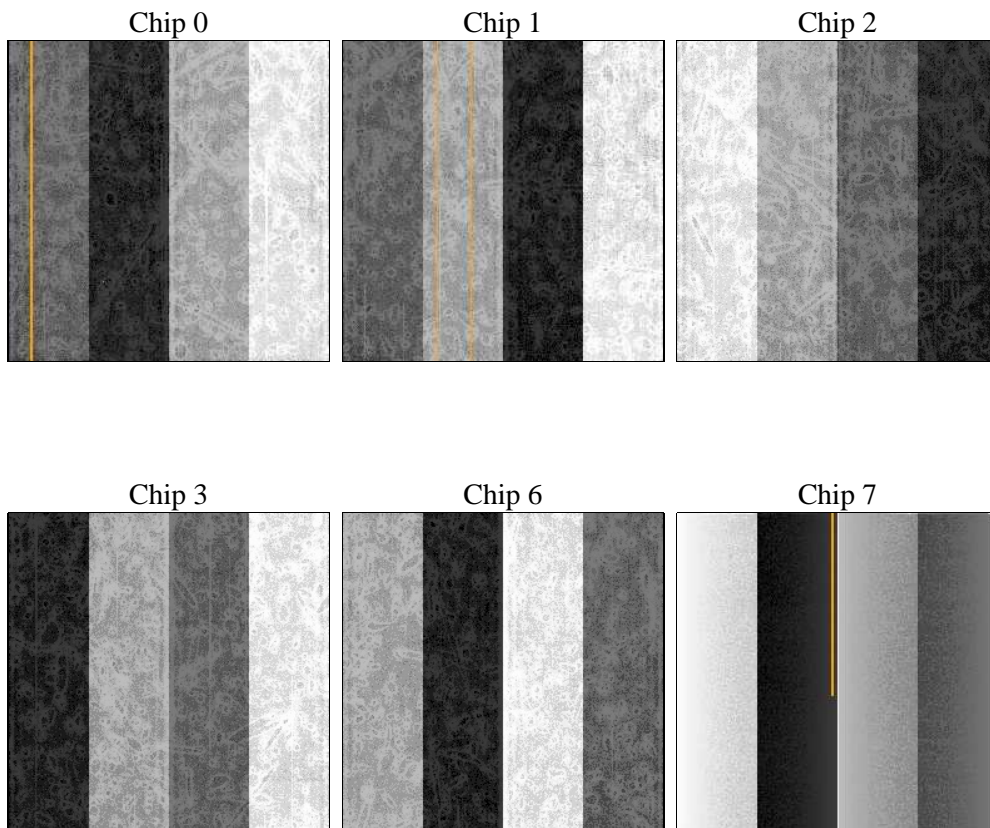
2 OBI

2.1 OBI

2.1.1 Images



2.1.2 Bias



2.1.3 Parameters

obi_num	0	Obi number	sched_exp_time	2900.000000	[s] Scheduled observation exposure time
ascdsver	8.4.5	Processing system revision	ontime	2860.8000026494	Sum of GTIs [s]
caldsver	4.5.2	 	ontime0	2860.8000026494	Sum of GTIs [s]
date	2012-10-02T04:56:21	Date and time of file creation	ontime1	2860.8000026494	Sum of GTIs [s]
revision	4	Processing version of data	ontime2	2860.8000026494	Sum of GTIs [s]
			ontime3	2860.8000026494	Sum of GTIs [s]
			ontime6	2860.8000026494	Sum of GTIs [s]
			ontime7	2860.8000026494	Sum of GTIs [s]
			l1events	112950	Number of level 1 events

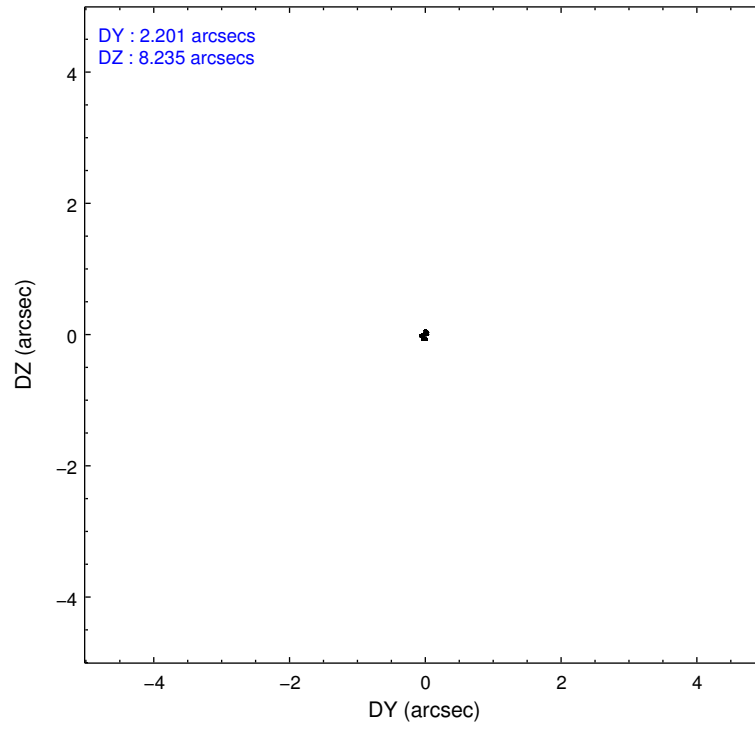
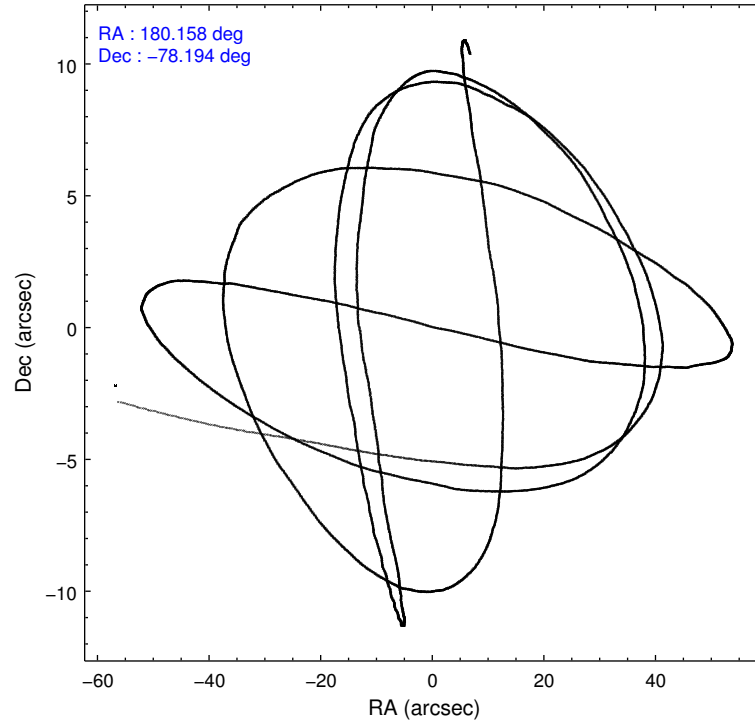
2.1.4 Events

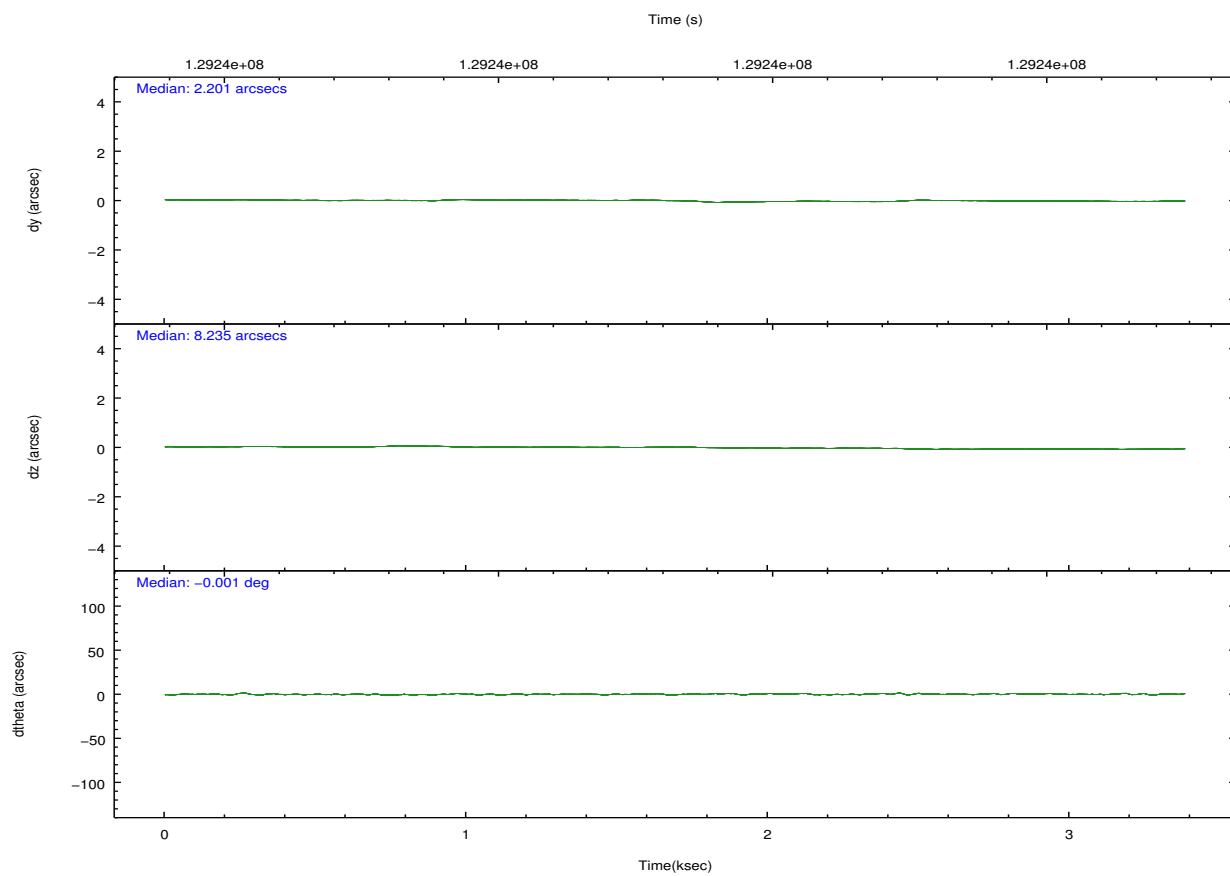
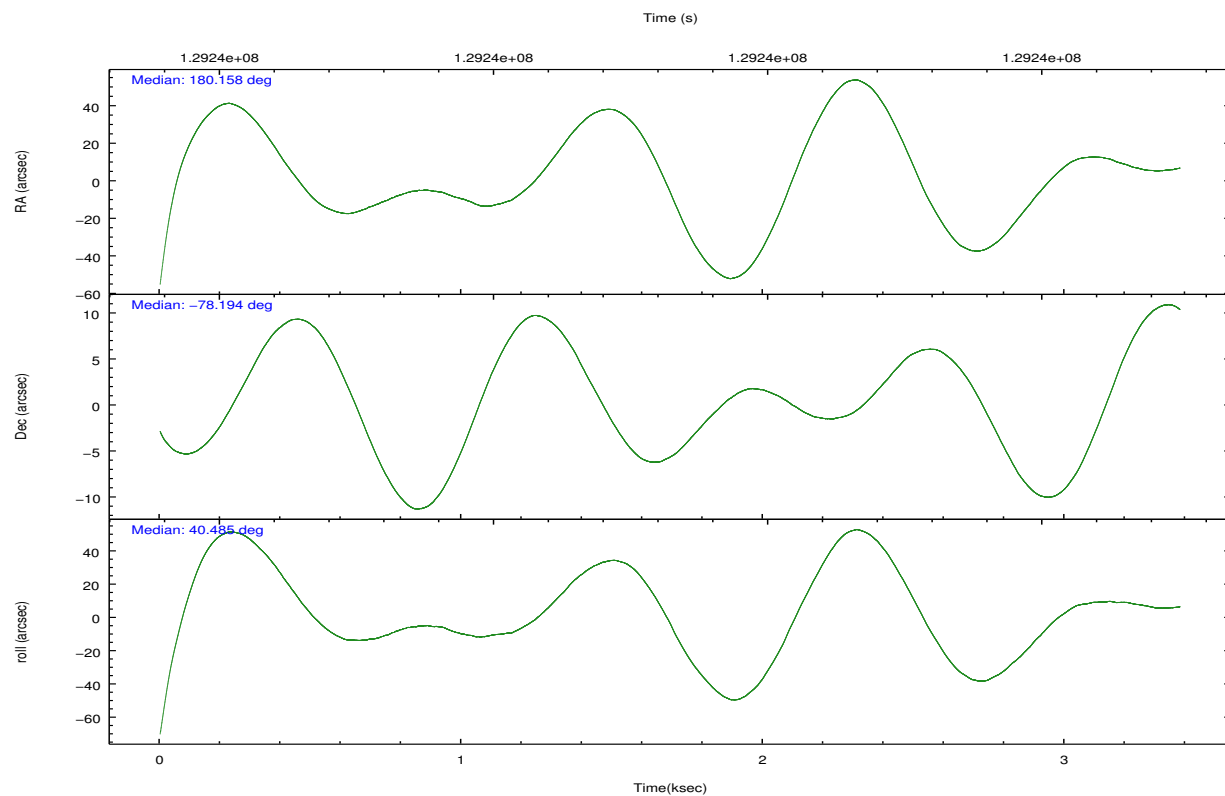
	ccd 0	ccd 1	ccd 2	ccd 3	ccd 6	ccd 7		ccd 0	ccd 1	ccd 2	ccd 3	ccd 6	ccd 7
level 1 events	15654	16561	18045	19346	19844	23500	grade 0 events	905	856	875	1514	1217	869
rejected events	13506	14365	15882	16360	17303	13744		5%	5%	4%	7%	6%	3%
rejected %	86%	86%	88%	84%	87%	58%	grade 1 events	7	9	8	52	9	23
								0%	0%	0%	0%	0%	0%
							grade 2 events	456	448	503	561	454	1868
								2%	2%	2%	2%	2%	7%
							grade 3 events	221	231	213	251	245	922
								1%	1%	1%	1%	1%	3%
							grade 4 events	197	223	191	240	217	859
								1%	1%	1%	1%	1%	3%
							grade 5 events	668	717	657	724	790	2280
								4%	4%	3%	3%	3%	9%
							grade 6 events	372	438	382	422	411	5244
								2%	2%	2%	2%	2%	22%
							grade 7 events	12828	13639	15216	15582	16501	11435
								81%	82%	84%	80%	83%	48%

2.2 Compared Parameters

Parameter	Planned	Actual	Parameter	Planned	Actual
Instrument	ACIS	ACIS	Obspar format version number	7	7
Detector	ACIS-012367	ACIS-012367	Obspar file type	PREDICTED	ACTUAL
Grating	NONE	NONE	Obspar update status	NONE	UPDATED
Data mode	FAINT	FAINT	Number of optional ACIS chips dropped	0	0
Observation mode	POINTING	POINTING	On-chip summing requested	N	N
[deg] Pointing RA	180.113366	180.1582608403708	Subarray requested	NONE	NONE
[deg] Pointing Dec	-78.219492	-78.19356780401505	Alternating exposures requested	N	N
[deg] Pointing Roll	40.235966	40.48850626833274	[s] Primary exposure time	0.000000	3.2
[mm] SIM focus pos	-0.782348	-0.7809083437167272			
[mm] SIM defocus	0	0.001439871863259334			
[mm] SIM translation stage pos	-233.592463	-233.5874344608287			
[mm] SIM translation stage offset	0	-0.005018542100998502			
[s] Observation start time (MET)	129239436.184000	129238318.6329			
Observation start date	2002-02-04T19:49:32	2002-02-04T19:31:58			
[s] Observation end time (MET)	129242336.184000	129242638.49557			
Observation end date	2002-02-04T20:37:52	2002-02-04T20:43:58			
Read mode	TIMED	TIMED			

2.3 Aspect



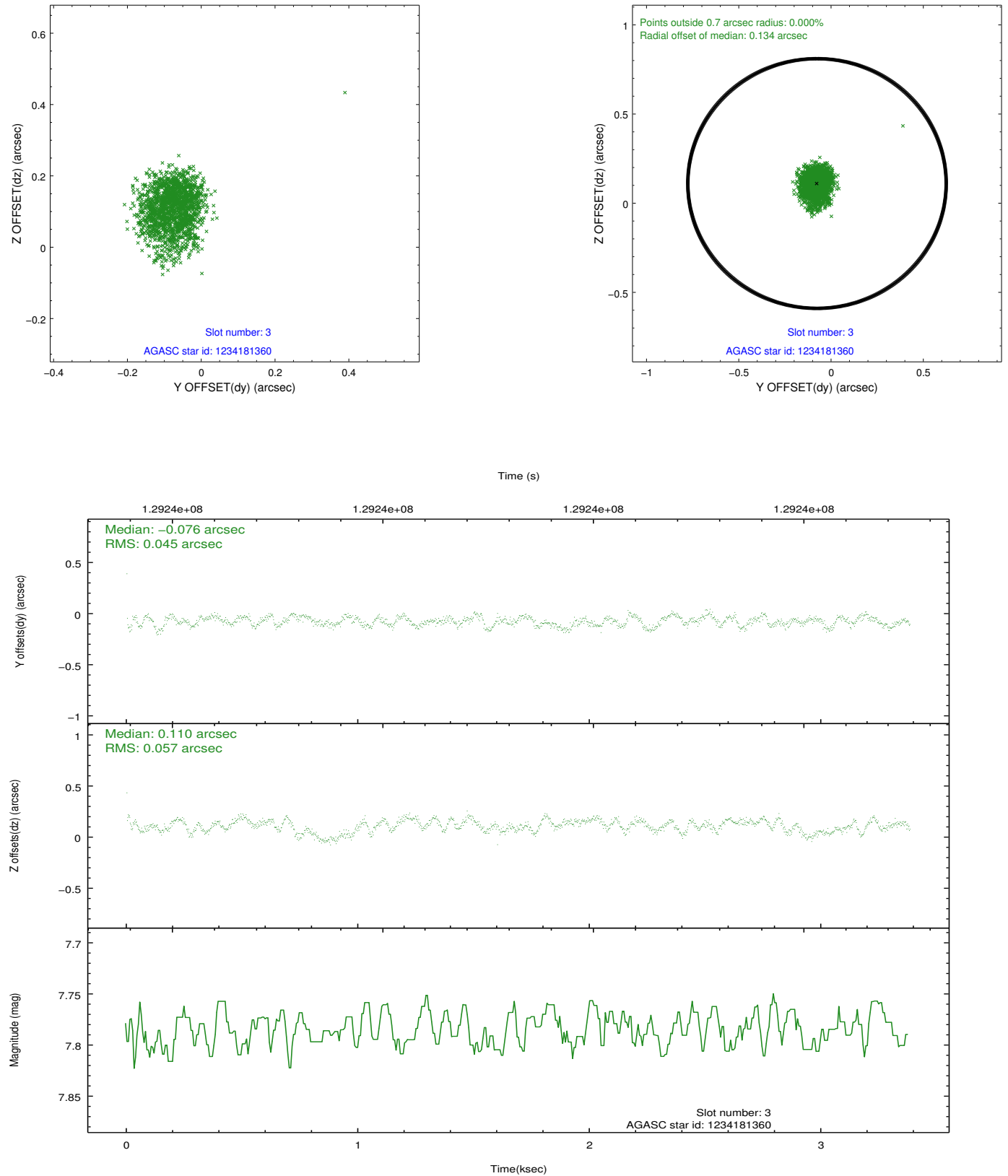


Slot Statistics

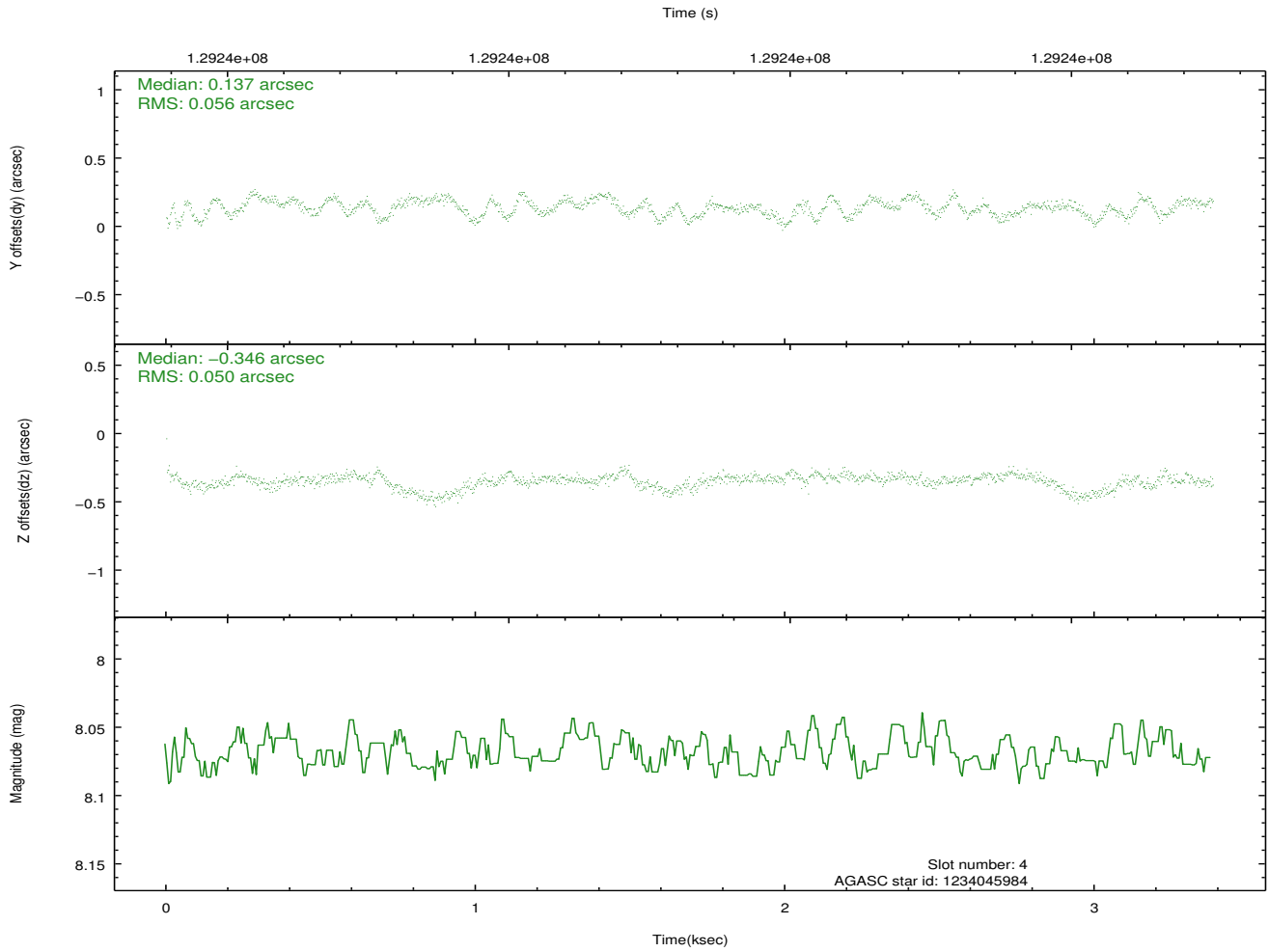
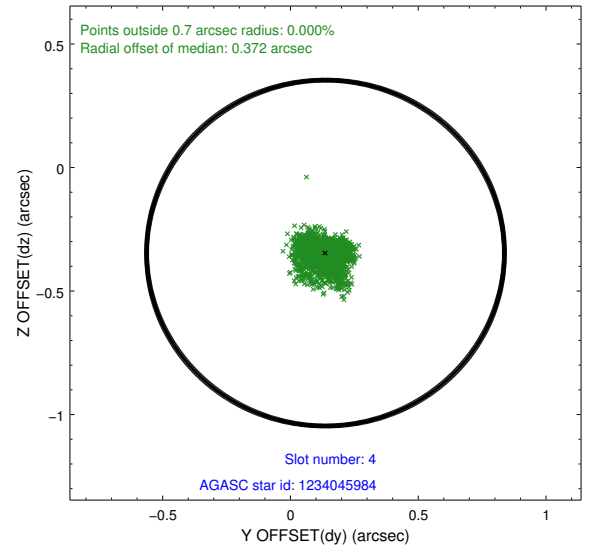
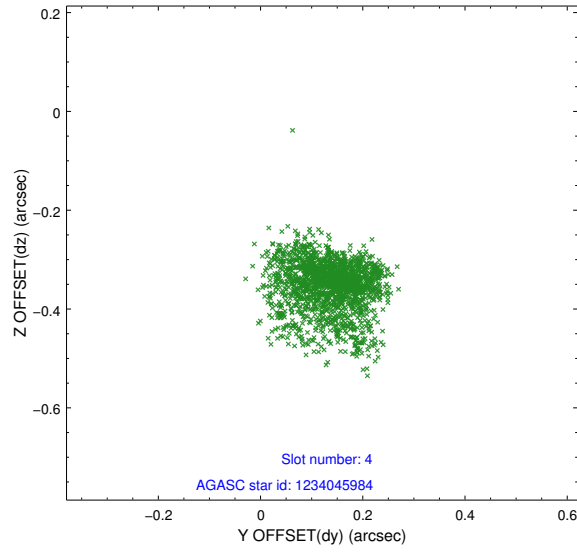
slot	status	id	mag	n_pts	med_dy	med_dz	dr1	dr2	ra	dec	mean_y	mean_z
0	FID	ACIS-I-1	7.24	825	-0.042	0.075	0.006	0.011	0.000000	0.000000	937.57	-831.58
1	FID	ACIS-I-5	7.23	826	-0.013	0.028	0.006	0.010	0.000000	0.000000	-1809.45	1064.96
2	FID	ACIS-I-6	7.26	825	-0.036	-0.033	0.006	0.010	0.000000	0.000000	401.12	1711.50
3	GUIDE	1234181360	7.79	1651	-0.076	0.110	0.076	0.122	181.773022	-78.741114	-333.65	-2199.66
4	GUIDE	1234045984	8.07	1651	0.137	-0.346	0.080	0.132	176.913419	-77.887125	-1114.98	2421.90
5	GUIDE	1234182136	9.05	1651	-0.044	0.019	0.074	0.140	182.214909	-78.100241	1448.68	-699.81
6	GUIDE	1234064464	9.63	1650	0.140	0.040	0.098	0.178	177.668275	-78.583073	-2198.09	97.53
7	GUIDE	1234188728	10.47	1647	-0.154	0.160	0.213	0.472	183.477363	-78.072777	2202.57	-1267.35

2.4 Star Slots

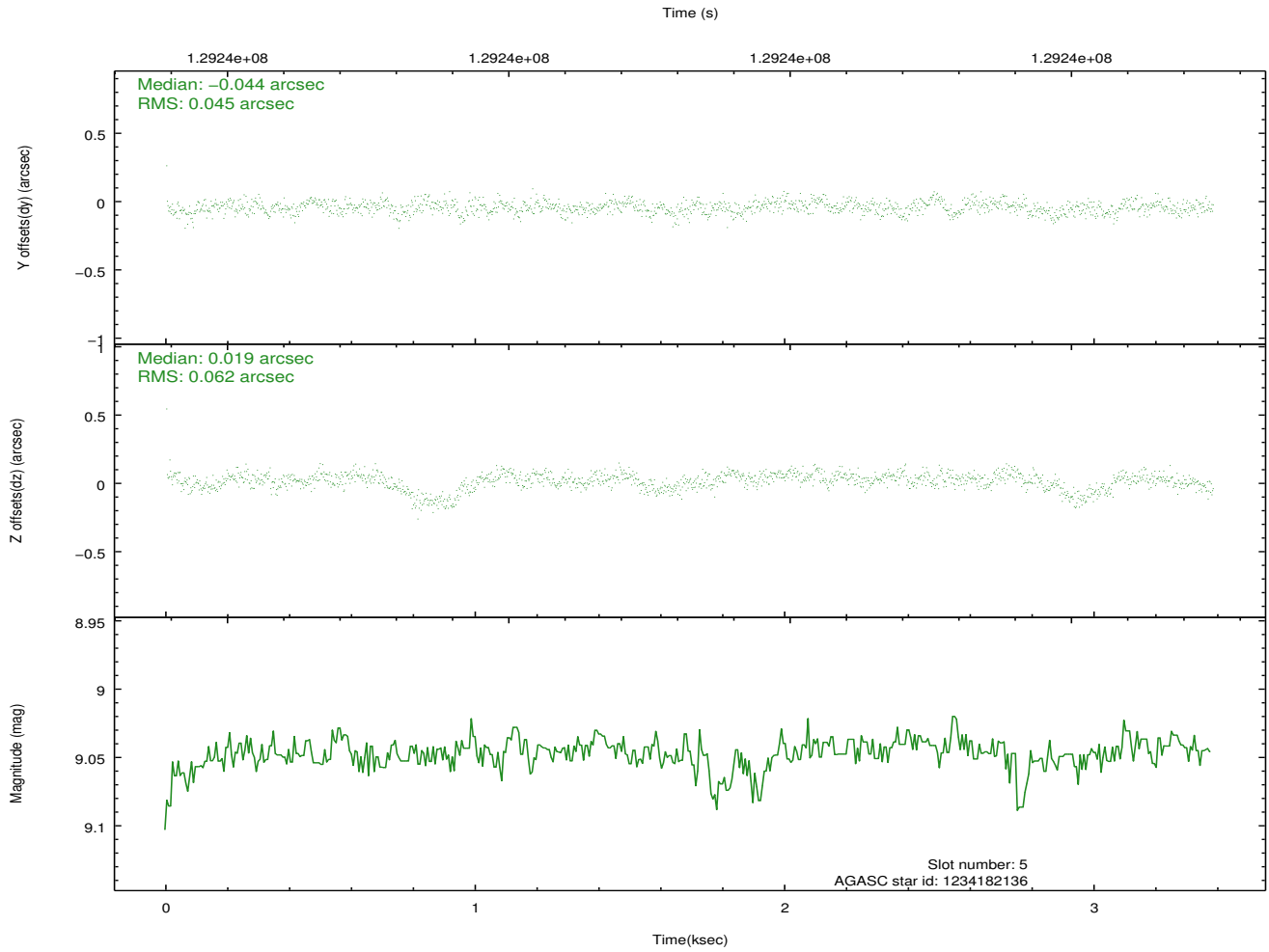
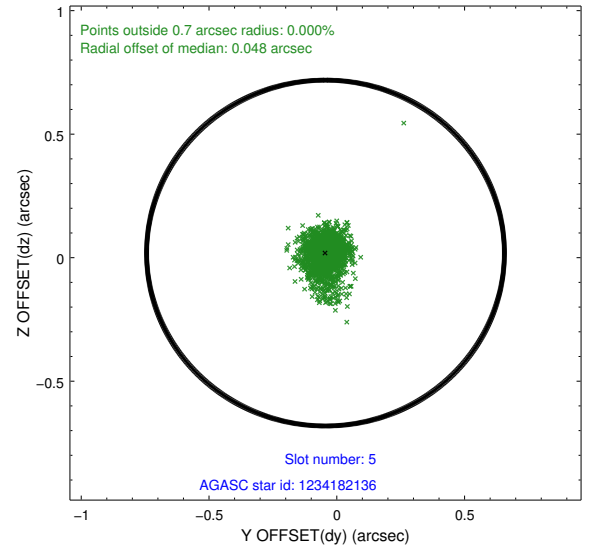
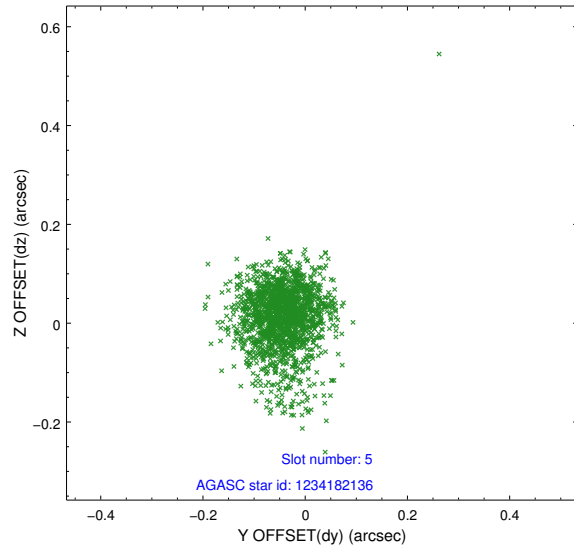
2.4.1 Slot 3



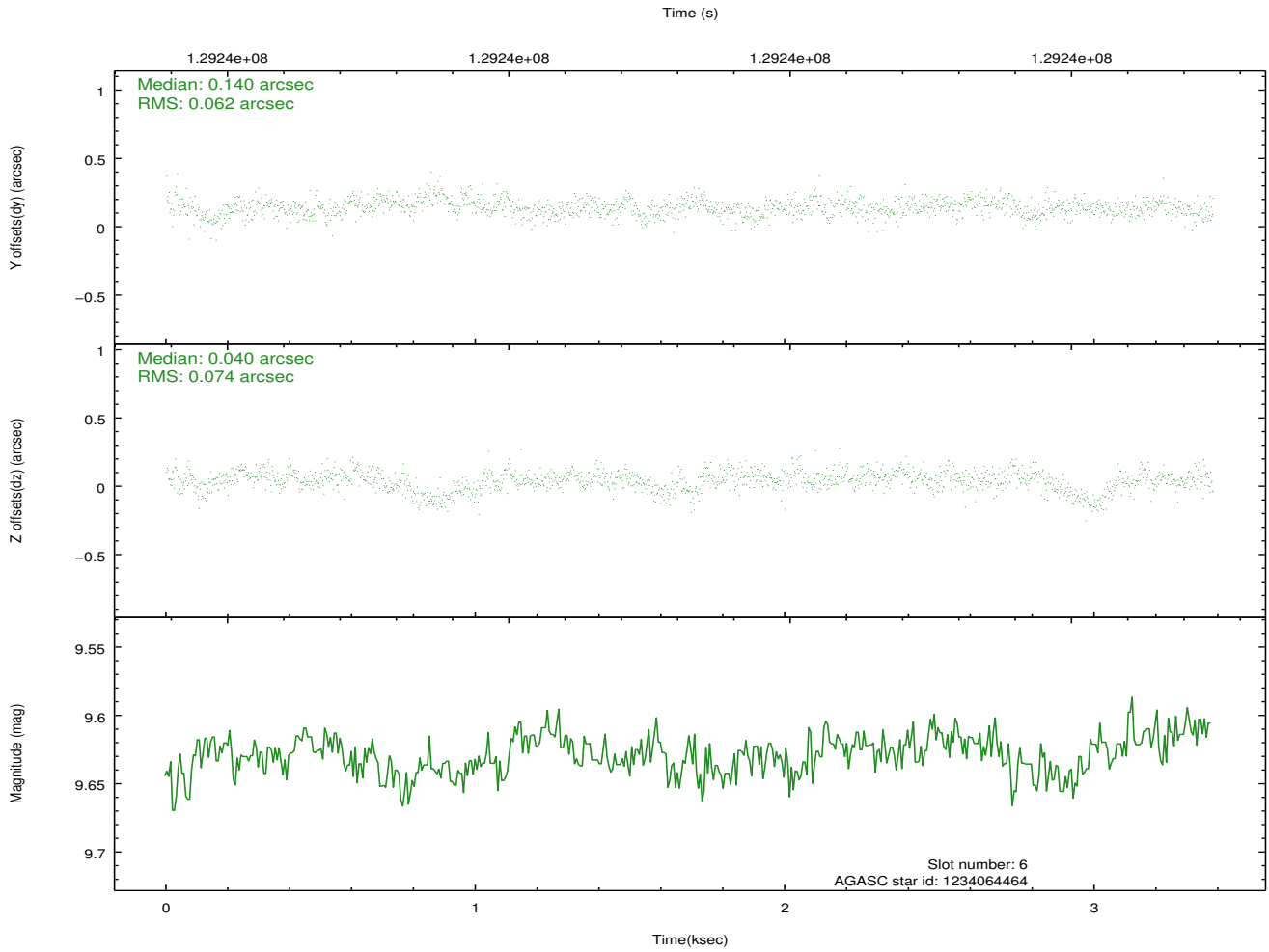
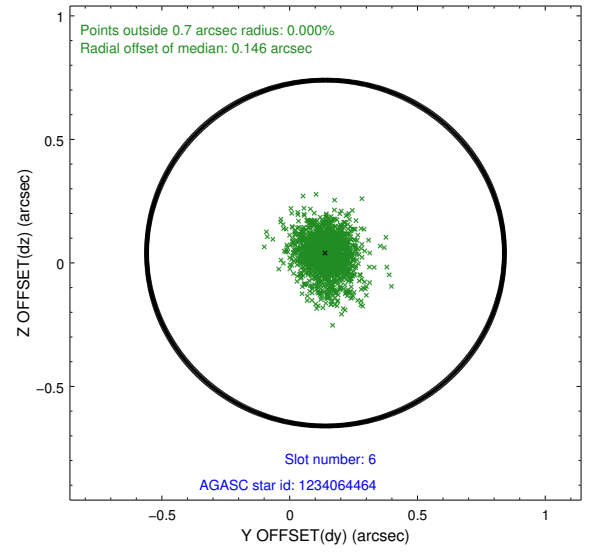
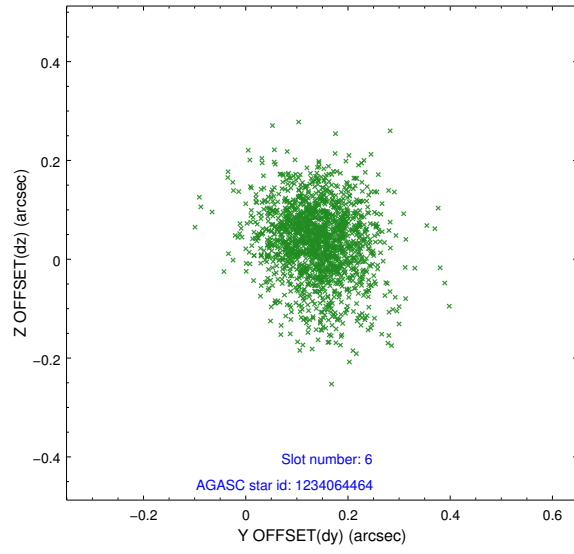
2.4.2 Slot 4



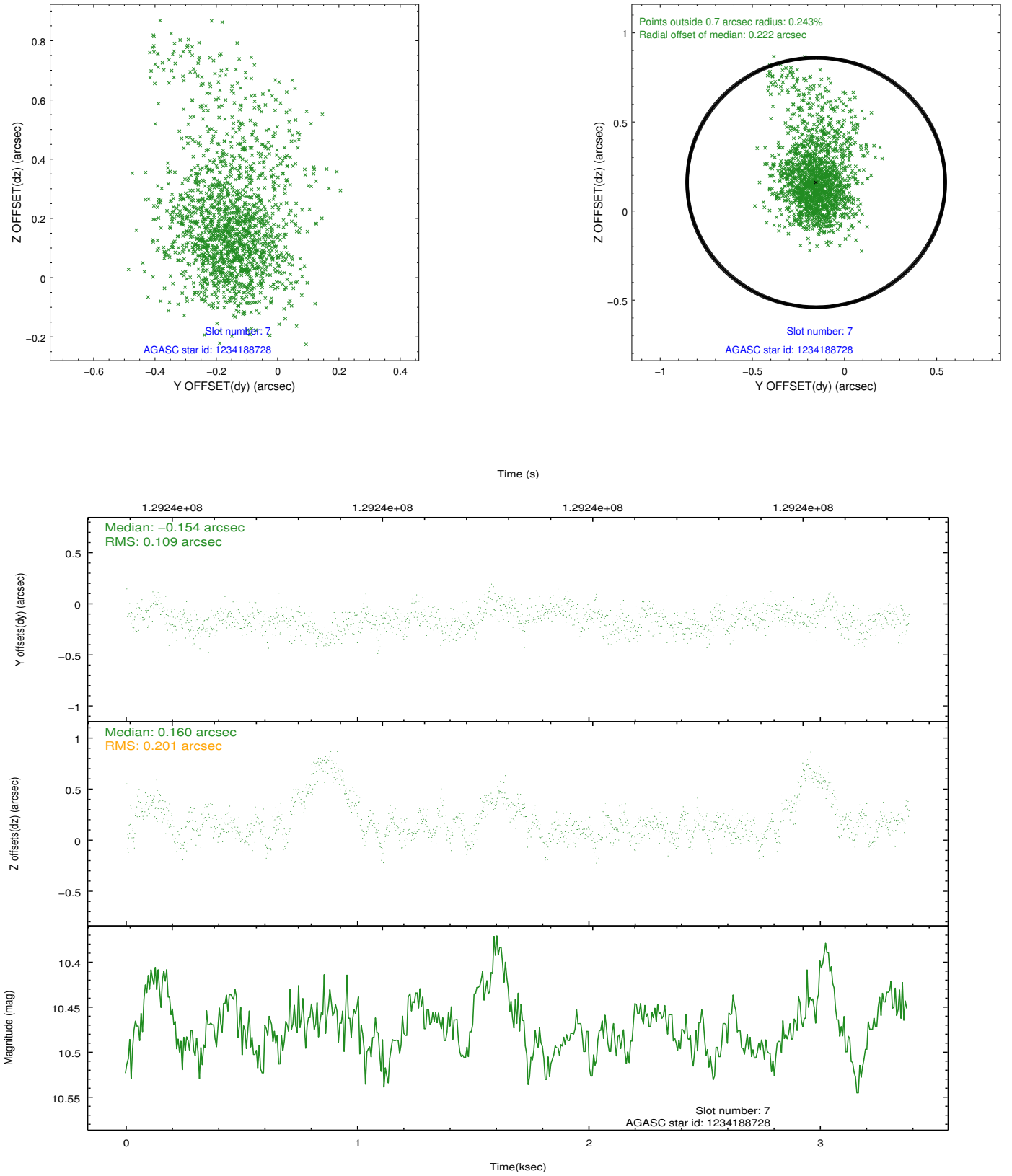
2.4.3 Slot 5



2.4.4 Slot 6

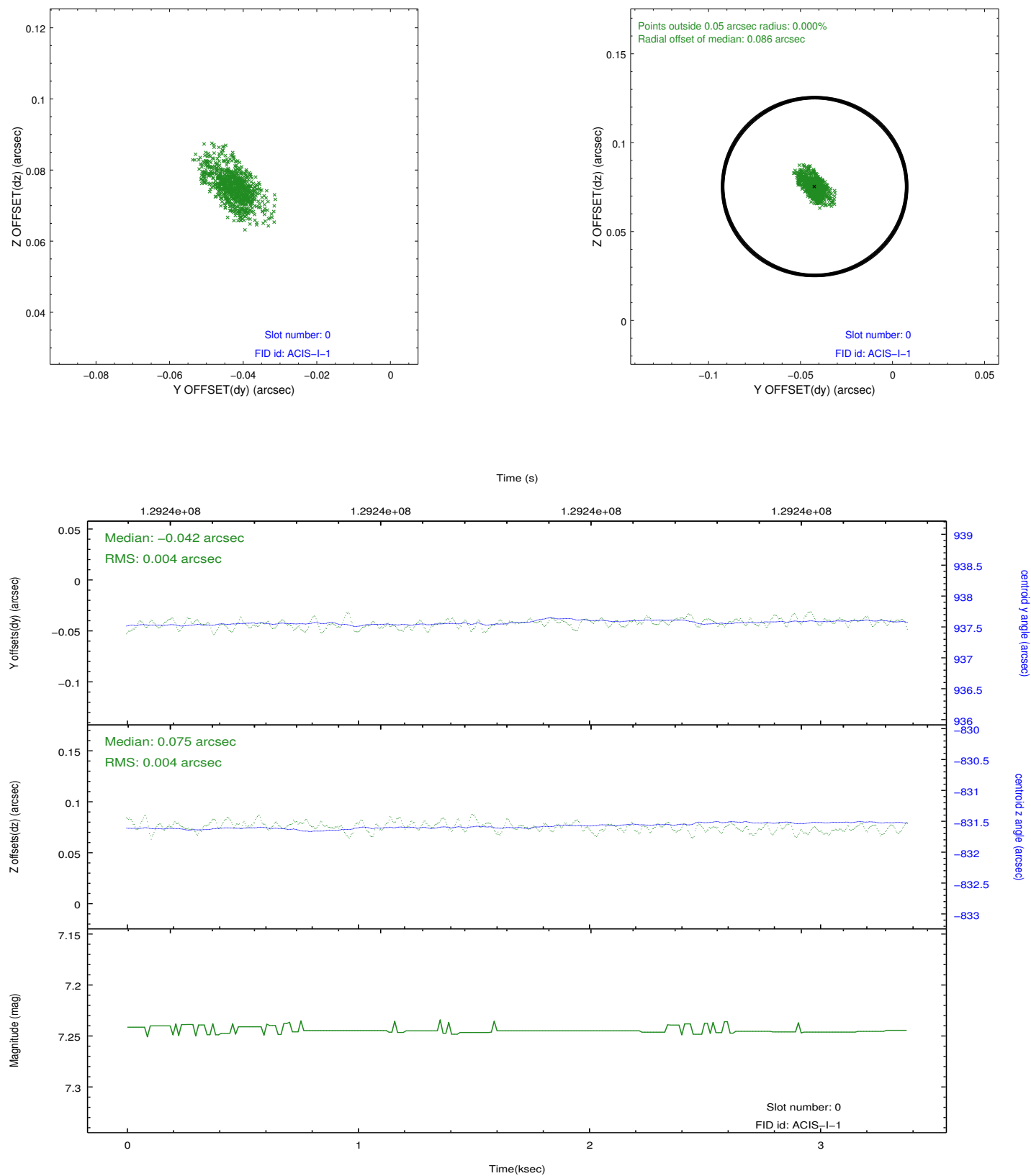


2.4.5 Slot 7

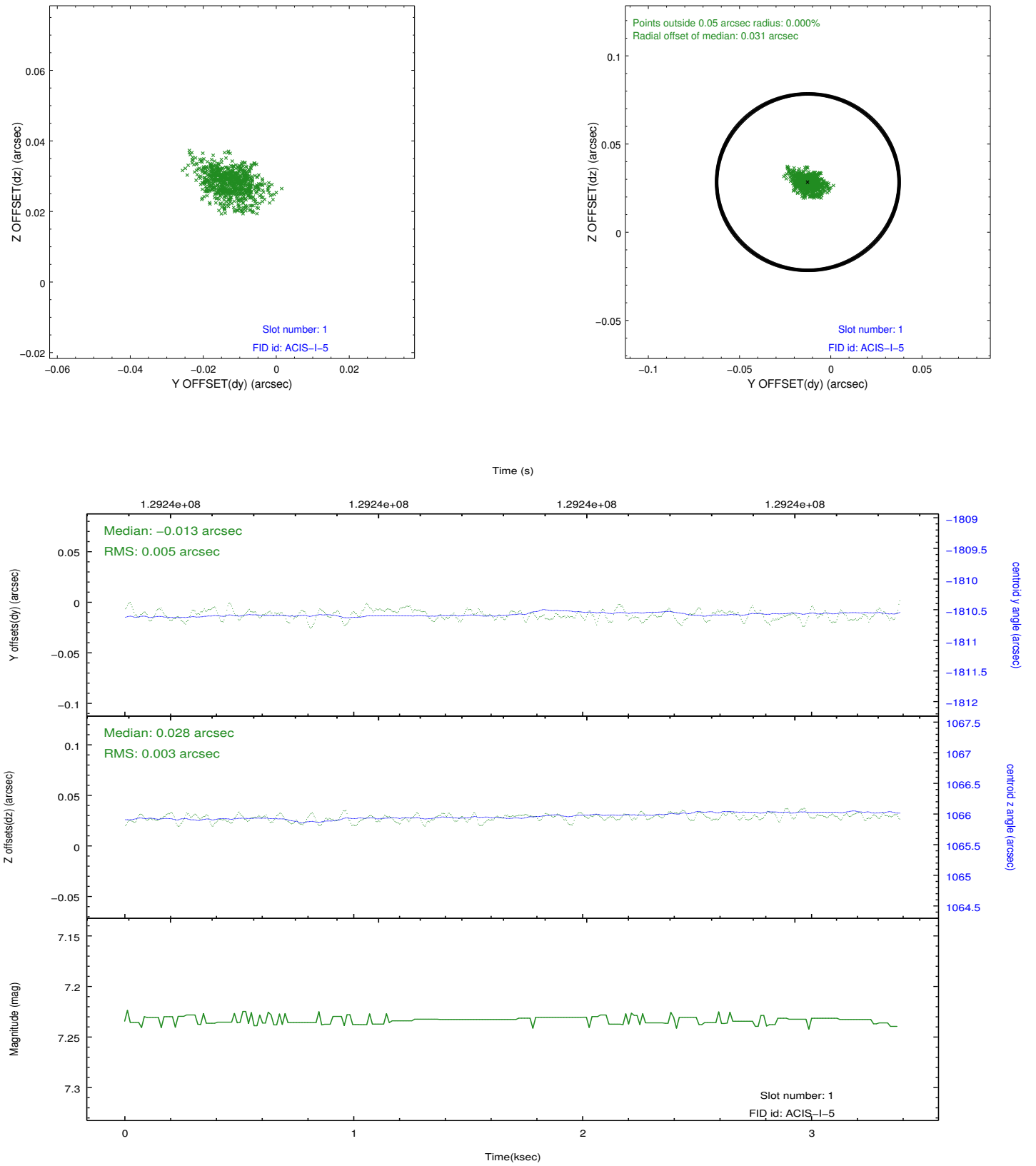


2.5 FID Slots

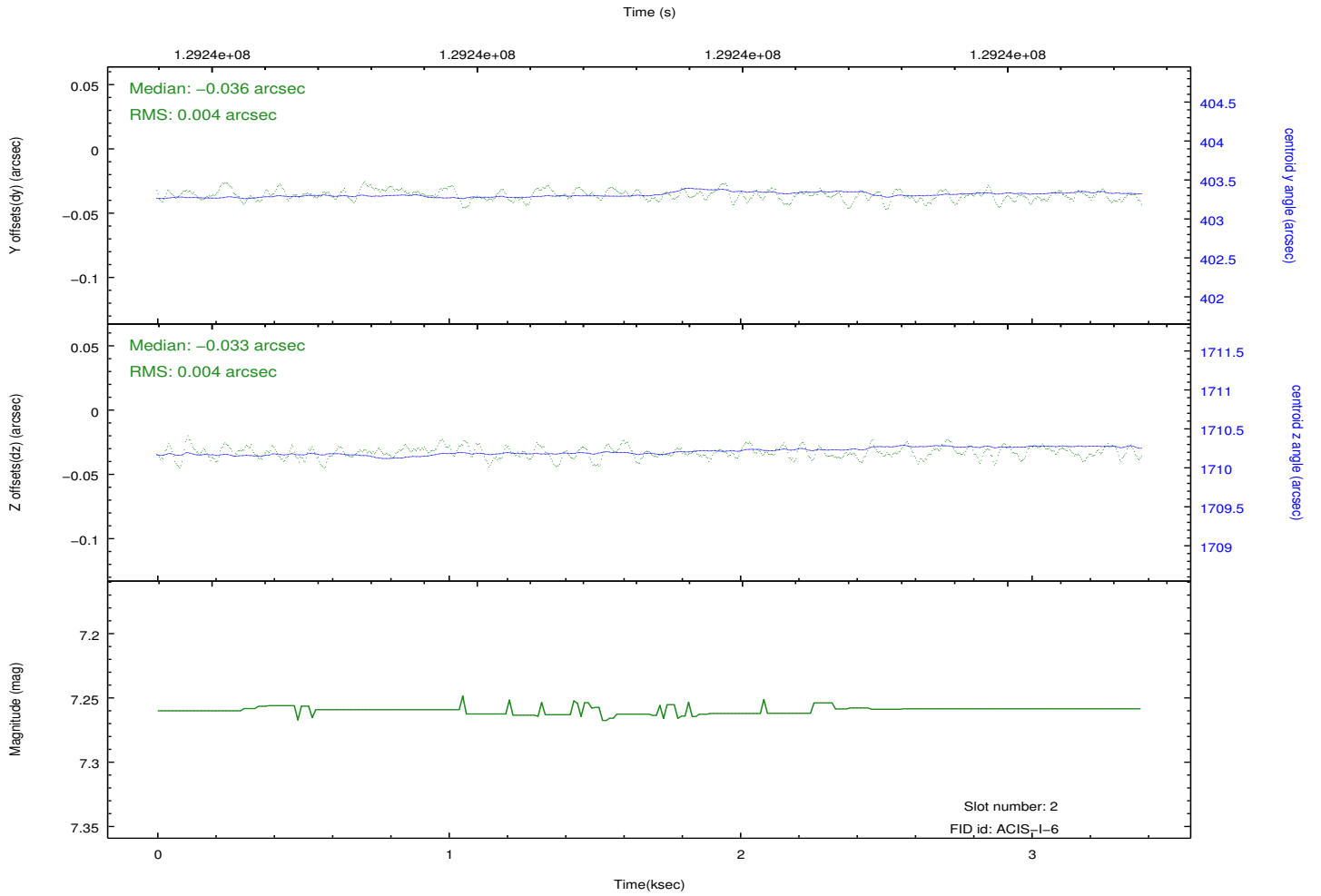
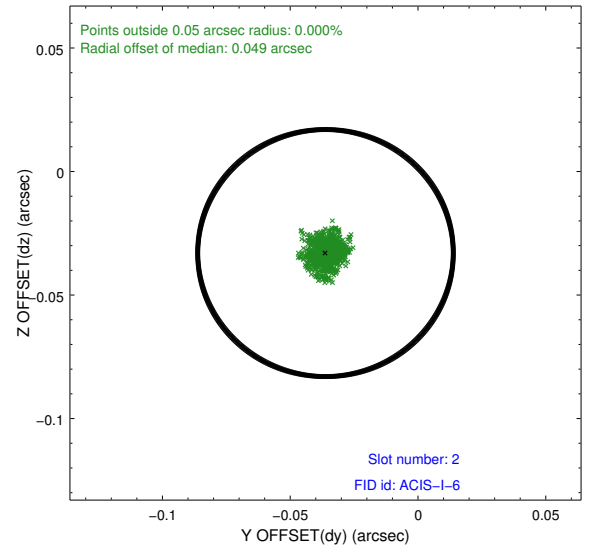
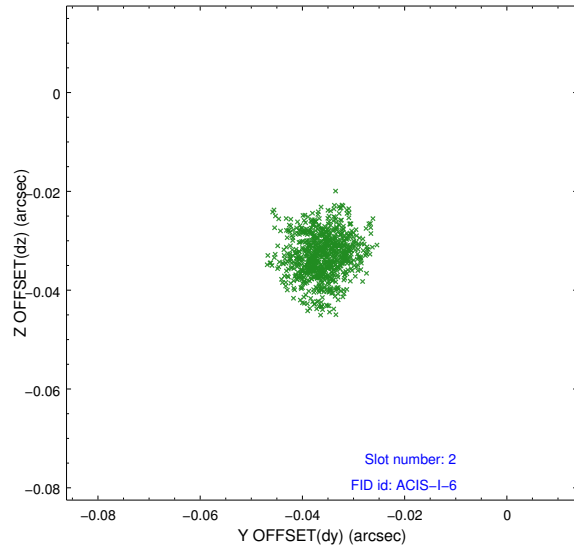
2.5.1 Slot 0



2.5.2 Slot 1



2.5.3 Slot 2



A Summary

A.1 Status

V&V Scientist	Jen Lauer
V&V Date (YYYY-MM-DD)	2012.10.03
V&V Edition	1
V&V Disposition and Status	OK
V&V Charge Time	2.864

A.2 Comments