

# V&V Reference Report

## L2 ASCDS Version : 8.4.5

Observation 940 - L2 Version 4  
Chandra X-Ray Center

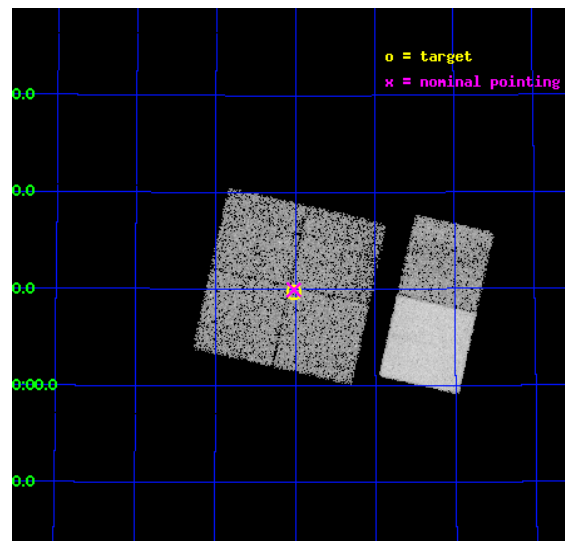
L2 Processing Date : Aug 25 2012

## Contents

<b>1</b>	<b>Front</b>	<b>2</b>
<b>2</b>	<b>OBI</b>	<b>3</b>
2.1	OBI . . . . .	3
2.1.1	Images . . . . .	3
2.1.2	Bias . . . . .	3
2.1.3	Parameters . . . . .	4
2.1.4	Events . . . . .	4
2.2	Compared Parameters . . . . .	5
2.3	Aspect . . . . .	6
2.4	Star Slots . . . . .	9
2.4.1	Slot 3 . . . . .	9
2.4.2	Slot 4 . . . . .	10
2.4.3	Slot 5 . . . . .	11
2.4.4	Slot 6 . . . . .	12
2.4.5	Slot 7 . . . . .	13
2.5	FID Slots . . . . .	14
2.5.1	Slot 0 . . . . .	14
2.5.2	Slot 1 . . . . .	15
2.5.3	Slot 2 . . . . .	16
<b>A</b>	<b>Summary</b>	<b>17</b>
A.1	Status . . . . .	17
A.2	Comments . . . . .	17

# 1 Front

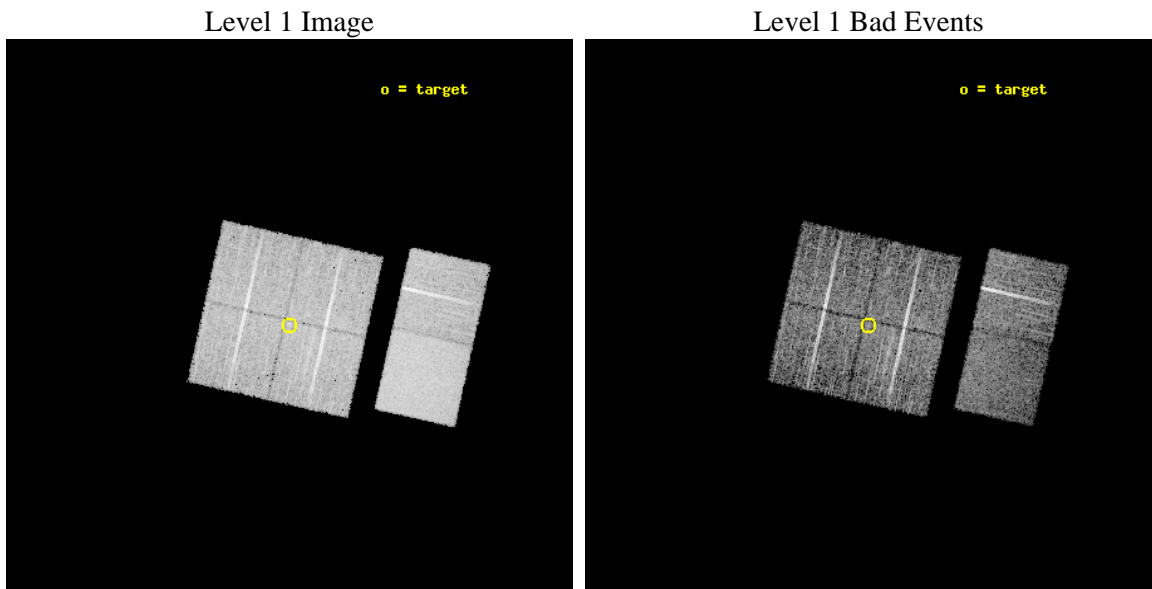
seq_num	900012	Sequence number
obs_id	940	Observation id
title	AXAF OBSERVATION OF FAINT HARD X-RAY SOURCES DISCOVERED WITH ASCA	&#160
observer	Dr. Tadayuki Takahashi	Principal investigator
object	AX J1951+5609	Source name
dtcycle	0	&#160
cycle	P	events from which exps? Prim/Second/Both
ra_targ	297.75307	Observer's specified target RA [deg]
dec_targ	56.16048	Observer's specified target Dec [deg]
ra_nom	297.75462786446	Nominal RA [deg]
dec_nom	56.165509658933	Nominal Dec [deg]
roll_nom	102.65201287544	Nominal Roll [deg]
revision	4	Processing version of data
ontime	7038.6198264658	Sum of GTIs [s]
livetime	6949.4925840751	Livetime [s]
ontime0	7035.2557163239	Sum of GTIs [s]
ontime1	7038.5377464741	Sum of GTIs [s]
ontime2	7038.5787864774	Sum of GTIs [s]
ontime3	7038.6198264658	Sum of GTIs [s]
ontime6	7038.7019064724	Sum of GTIs [s]
ontime7	7038.6608664691	Sum of GTIs [s]
l2events	88160	Number of level 2 events



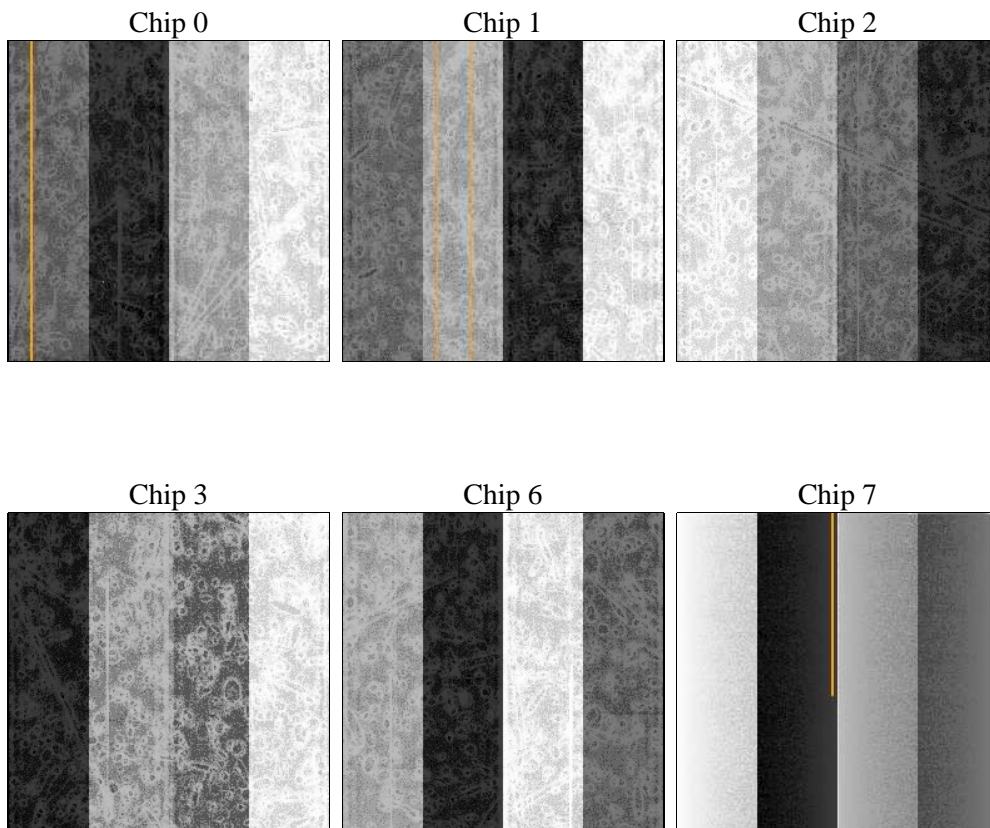
## 2 OBI

### 2.1 OBI

#### 2.1.1 Images



#### 2.1.2 Bias



### 2.1.3 Parameters

obi_num	0	Obi number	sched_exp_time	6993.130000	[s] Scheduled observation exposure time
ascdsver	8.4.5	Processing system revision	ontime	7038.6198264658	Sum of GTIs [s]
caldsver	4.5.1.1	&#160	ontime0	7035.2557163239	Sum of GTIs [s]
date	2012-08-25T20:49:36	Date and time of file creation	ontime1	7038.5377464741	Sum of GTIs [s]
revision	4	Processing version of data	ontime2	7038.5787864774	Sum of GTIs [s]
			ontime3	7038.6198264658	Sum of GTIs [s]
			ontime6	7038.7019064724	Sum of GTIs [s]
			ontime7	7038.6608664691	Sum of GTIs [s]
			l1events	353922	Number of level 1 events

### 2.1.4 Events

	ccd 0	ccd 1	ccd 2	ccd 3	ccd 6	ccd 7		ccd 0	ccd 1	ccd 2	ccd 3	ccd 6	ccd 7
level 1 events	51758	51663	53817	58020	57852	80812	grade 0 events	5524	5540	5147	5576	6287	5108
rejected events	42243	42004	44910	48535	47449	34541		10%	10%	9%	9%	10%	6%
rejected %	81%	81%	83%	83%	82%	42%	grade 1 events	42	22	37	52	37	59
								0%	0%	0%	0%	0%	0%
							grade 2 events	1541	1528	1515	1475	1574	8702
								2%	2%	2%	2%	2%	10%
							grade 3 events	713	734	616	666	712	3955
								1%	1%	1%	1%	1%	4%
							grade 4 events	675	717	637	656	666	3916
								1%	1%	1%	1%	1%	4%
							grade 5 events	1557	1669	1504	1815	1960	5785
								3%	3%	2%	3%	3%	7%
							grade 6 events	1064	1149	998	1117	1179	24649
								2%	2%	1%	1%	2%	30%
							grade 7 events	40642	40304	43363	46663	45437	28638
								78%	78%	80%	80%	78%	35%

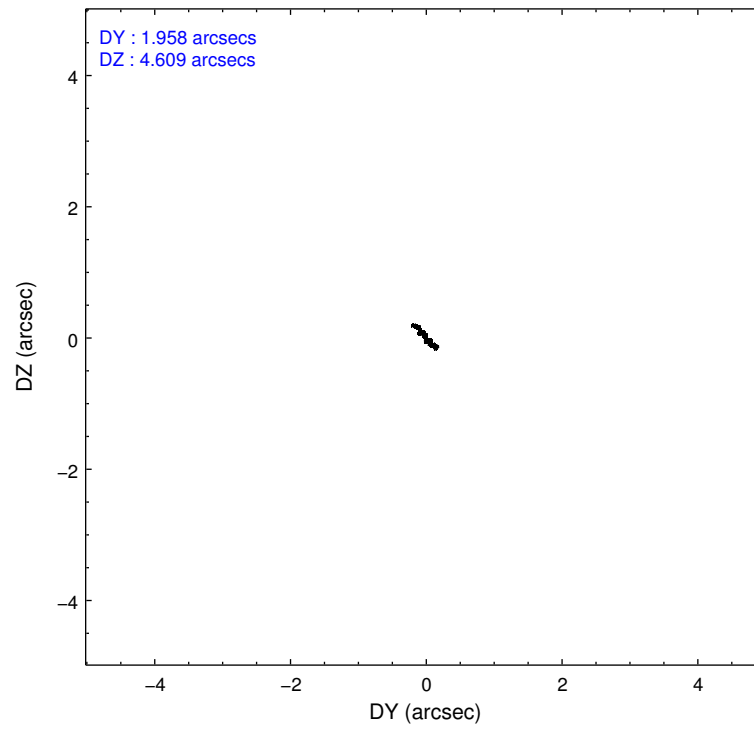
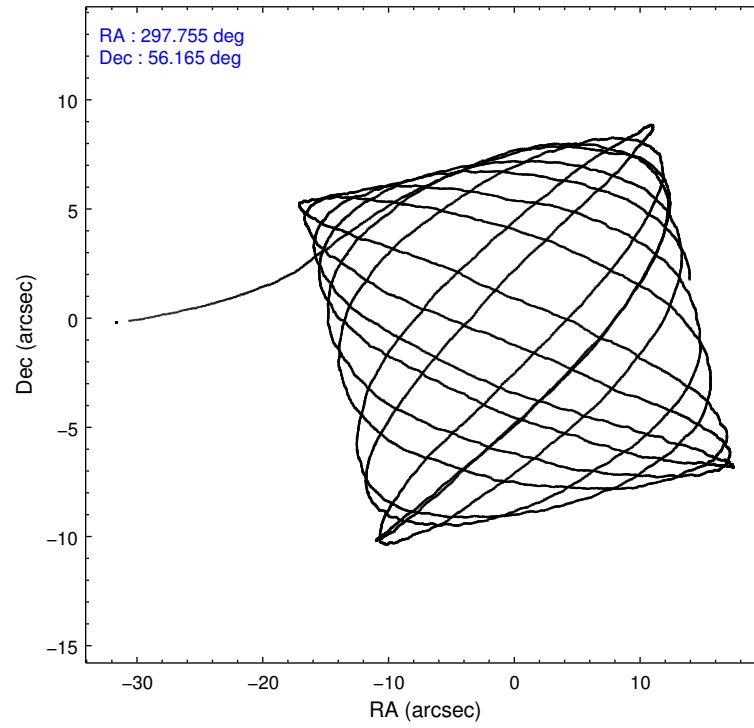


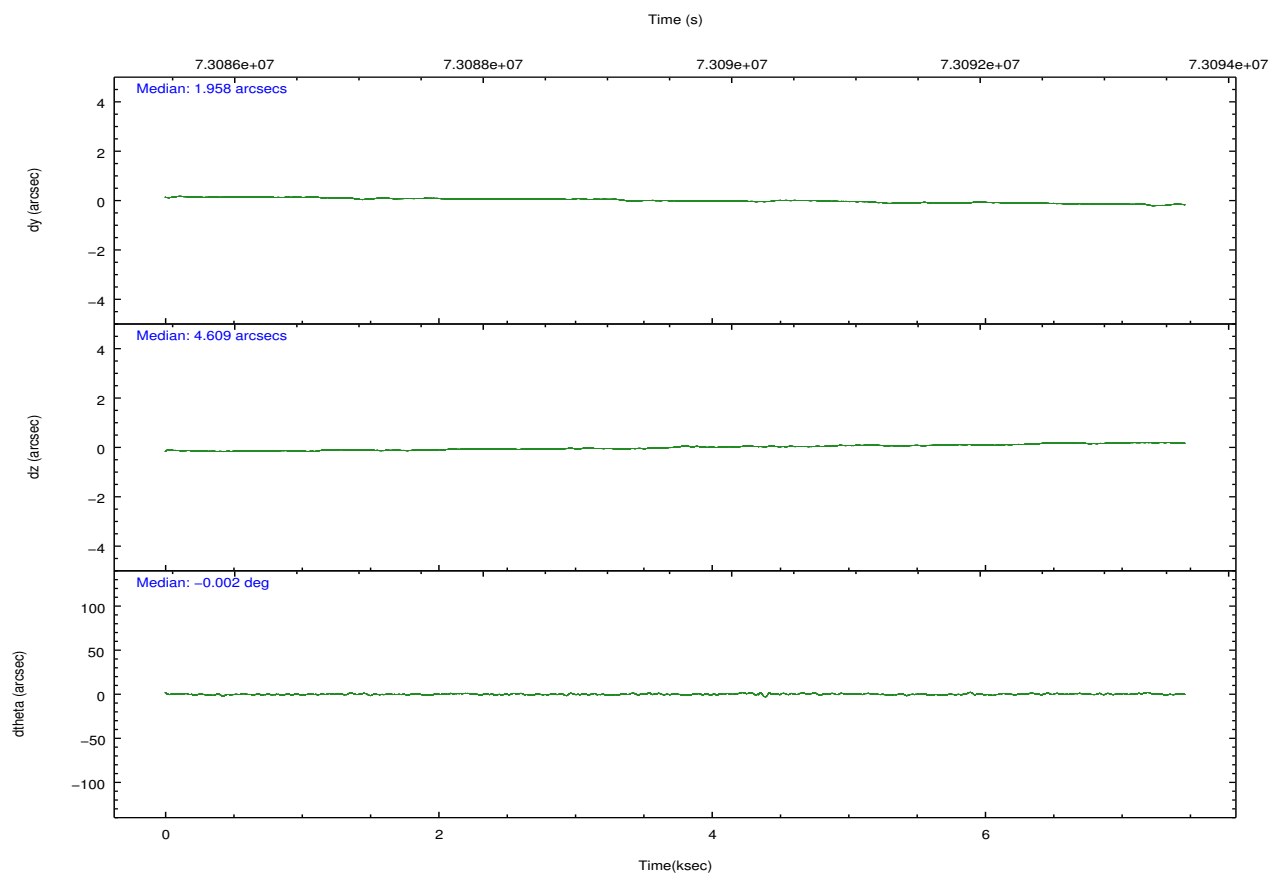
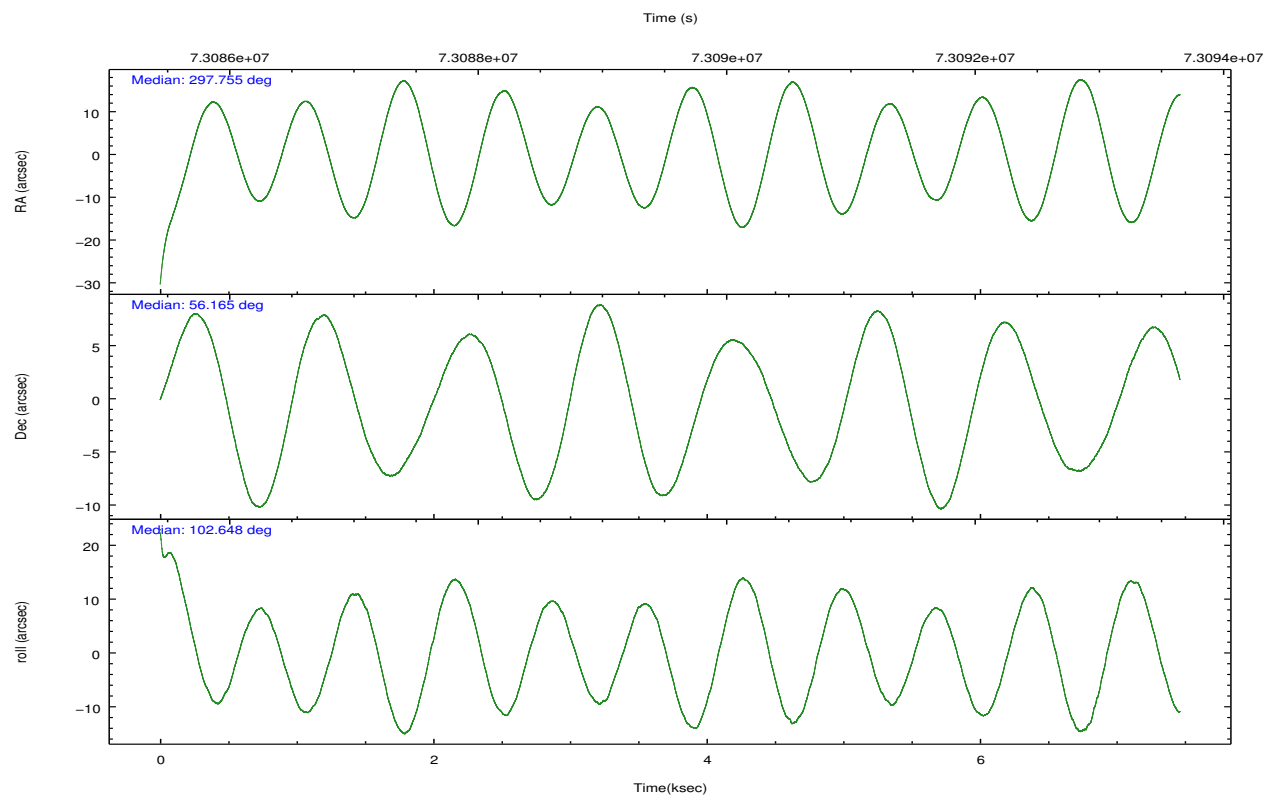
## 2.2 Compared Parameters

Parameter	Planned	Actual
Instrument	ACIS	ACIS
Detector	ACIS-012367	ACIS-012367
Grating	NONE	NONE
Data mode	VFAINT	VFAINT
Observation mode	POINTING	POINTING
[deg] Pointing RA	297.788016	297.7546278644611
[deg] Pointing Dec	56.144966	56.16550965893267
[deg] Pointing Roll	102.415616	102.6520128754404
[mm] SIM focus pos	-0.782348	-0.7809083437167272
[mm] SIM defocus	0	0.001439871863259334
[mm] SIM translation stage pos	-233.592463	-233.5874344608287
[mm] SIM translation stage offset	0	-0.005018542100998502
[s] Observation start time (MET)	73086289.184000	73085119.292153
Observation start date	2000-04-25T21:43:45	2000-04-25T21:25:19
[s] Observation end time (MET)	73093282.184000	73093590.917464
Observation end date	2000-04-25T23:40:18	2000-04-25T23:46:30
Read mode	TIMED	TIMED

Parameter	Planned	Actual
Obspar format version number	7	7
Obspar file type	PREDICTED	ACTUAL
Obspar update status	NONE	UPDATED
Number of optional ACIS chips dropped	0	0
On-chip summing requested	N	N
Subarray requested	NONE	NONE
Alternating exposures requested	N	N
[s] Primary exposure time	0.000000	3.2

## 2.3 Aspect



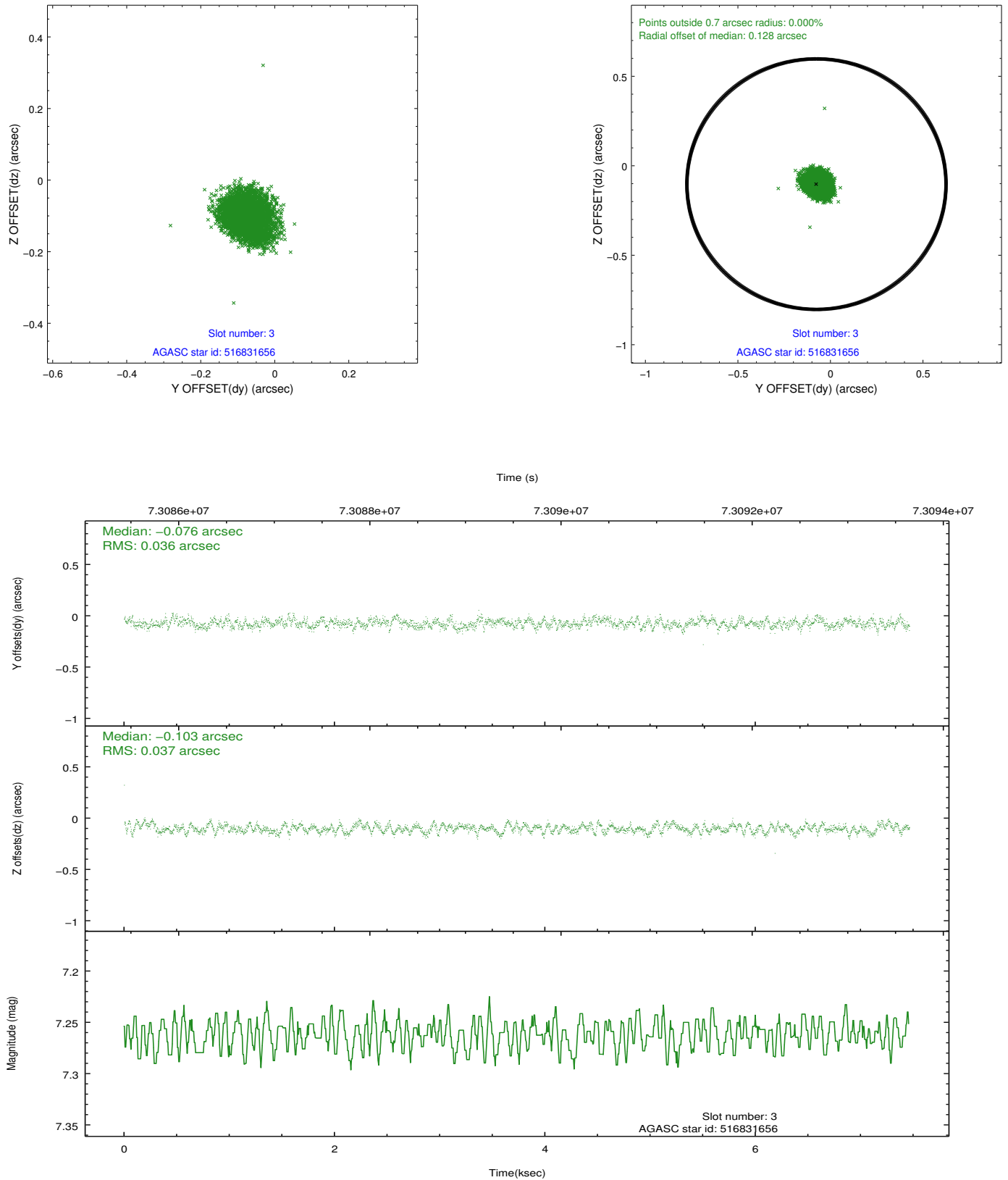


### Slot Statistics

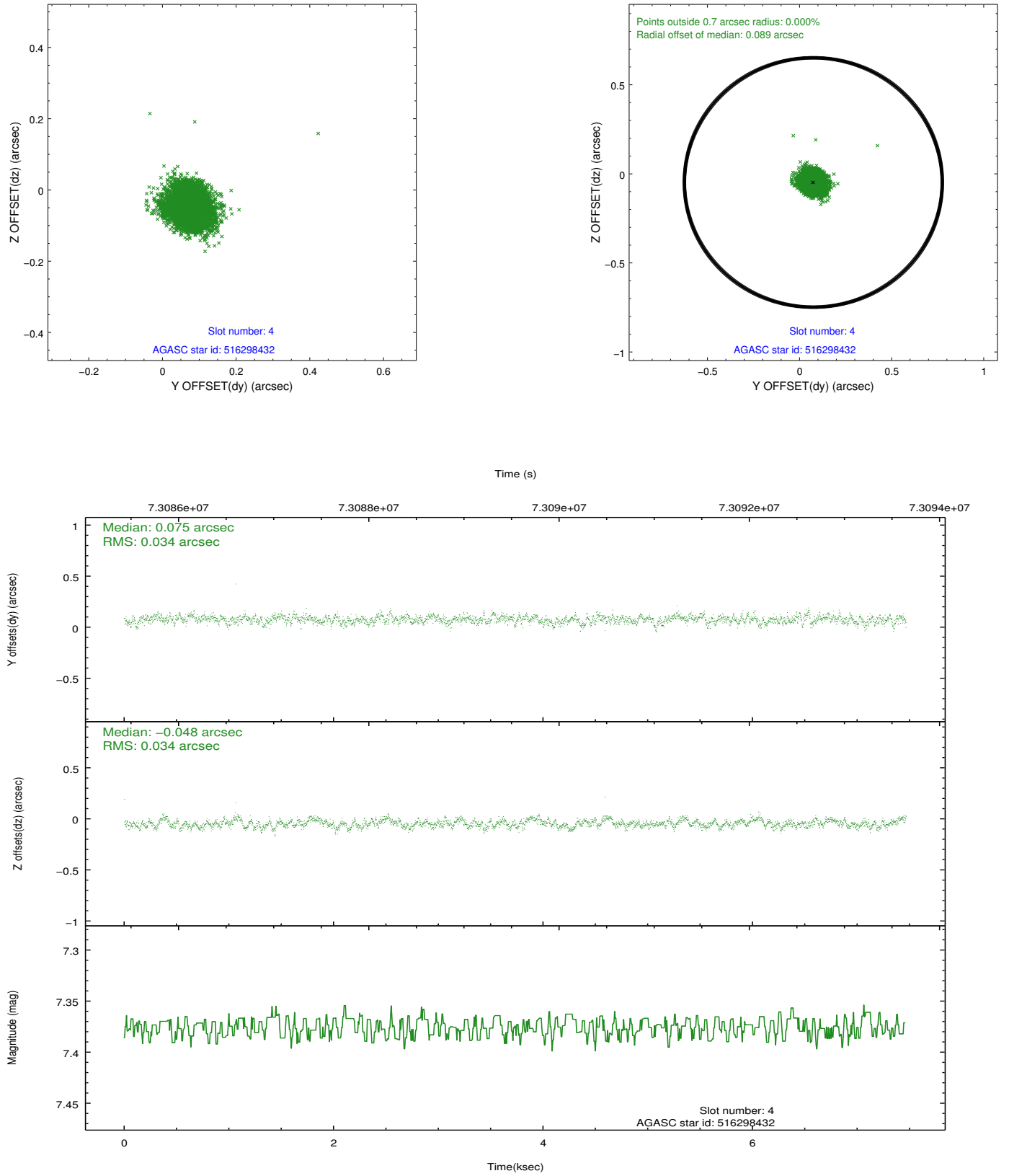
slot	status	id	mag	n_pts	med_dy	med_dz	dr1	dr2	ra	dec	mean_y	mean_z
0	FID	ACIS-I-2	7.15	1821	-0.024	-0.014	0.009	0.015	0.000000	0.000000	-756.34	-834.31
1	FID	ACIS-I-4	7.19	1820	-0.033	0.027	0.009	0.016	0.000000	0.000000	2157.38	1071.51
2	FID	ACIS-I-5	7.23	1821	-0.044	0.056	0.011	0.017	0.000000	0.000000	-1809.19	1070.27
3	GUIDE	516831656	7.26	3642	-0.076	-0.103	0.055	0.085	297.148009	56.500794	1530.11	964.83
4	GUIDE	516298432	7.38	3642	0.075	-0.048	0.052	0.081	297.622868	55.473998	-2285.69	847.99
5	GUIDE	516300080	8.29	3640	0.021	0.068	0.067	0.105	298.646761	55.801245	-1571.96	-1433.49
6	GUIDE	516833536	9.11	3641	-0.022	0.018	0.085	0.140	296.856512	56.383536	1249.67	1625.06
7	GUIDE	516832088	9.70	3637	0.003	0.067	0.115	0.179	298.851875	56.546834	975.53	-2376.22

## 2.4 Star Slots

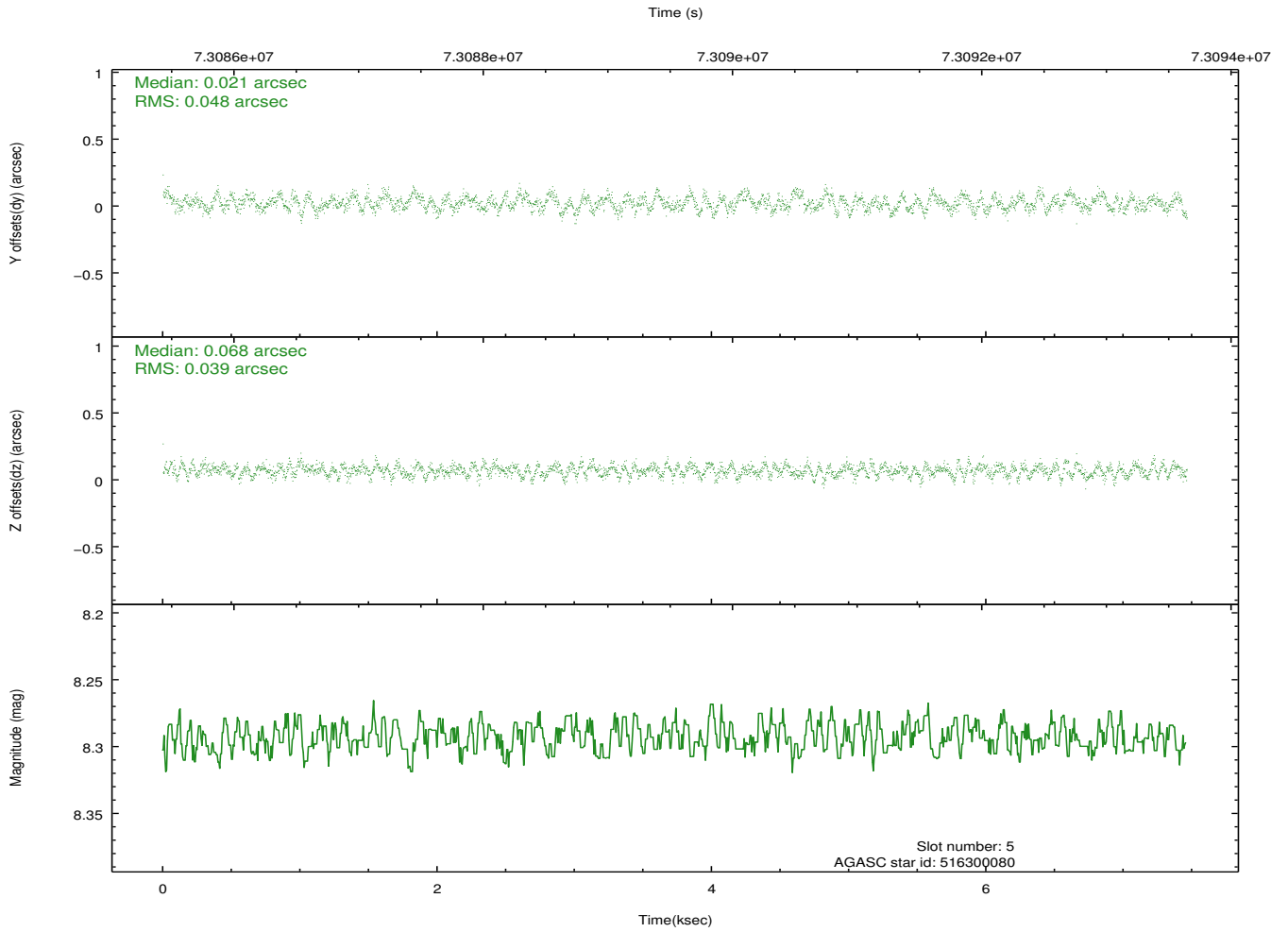
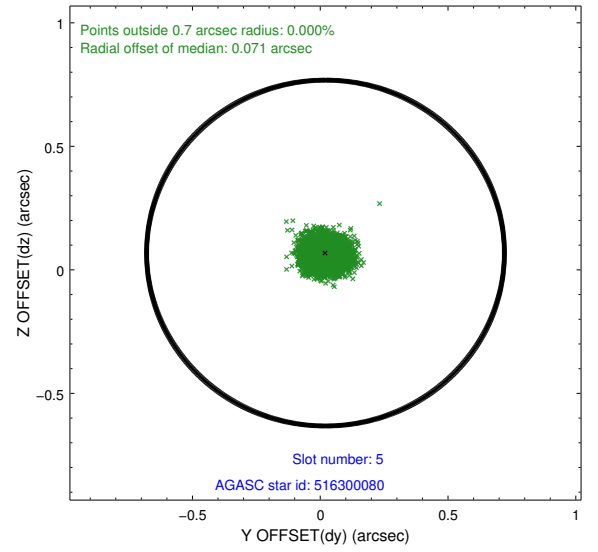
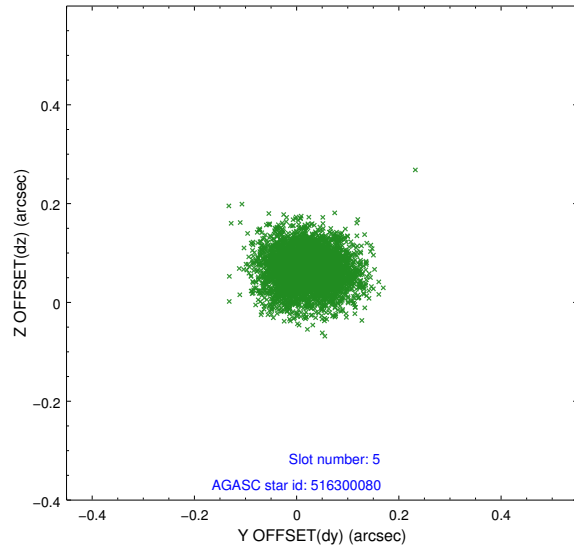
### 2.4.1 Slot 3



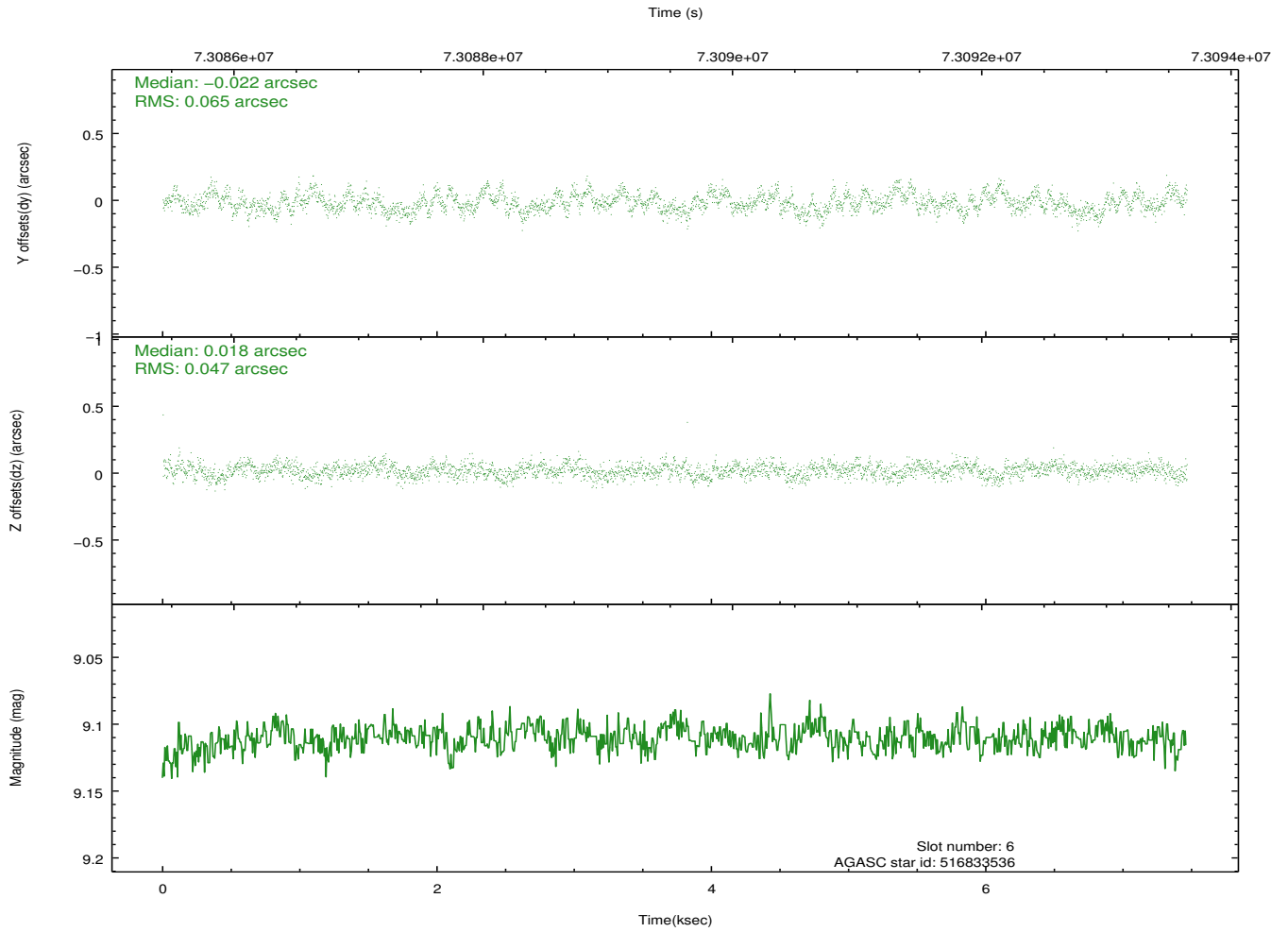
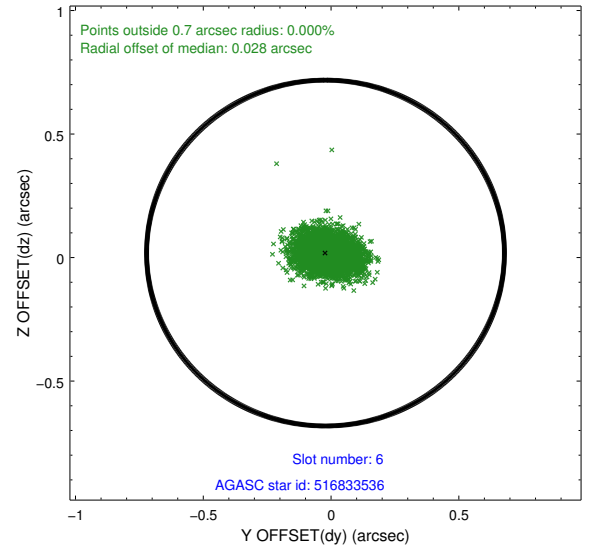
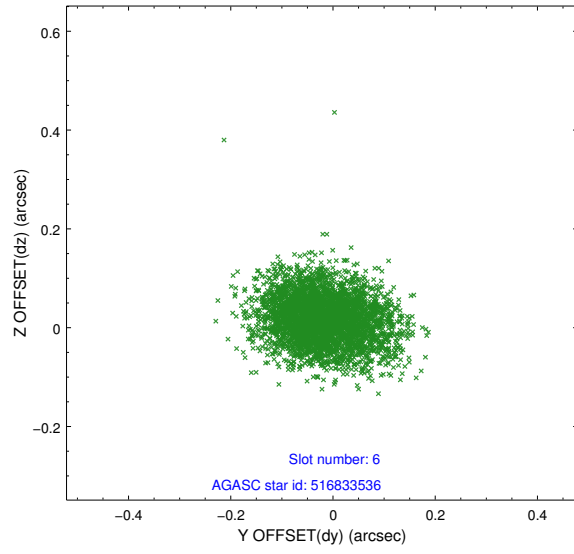
## 2.4.2 Slot 4



### 2.4.3 Slot 5

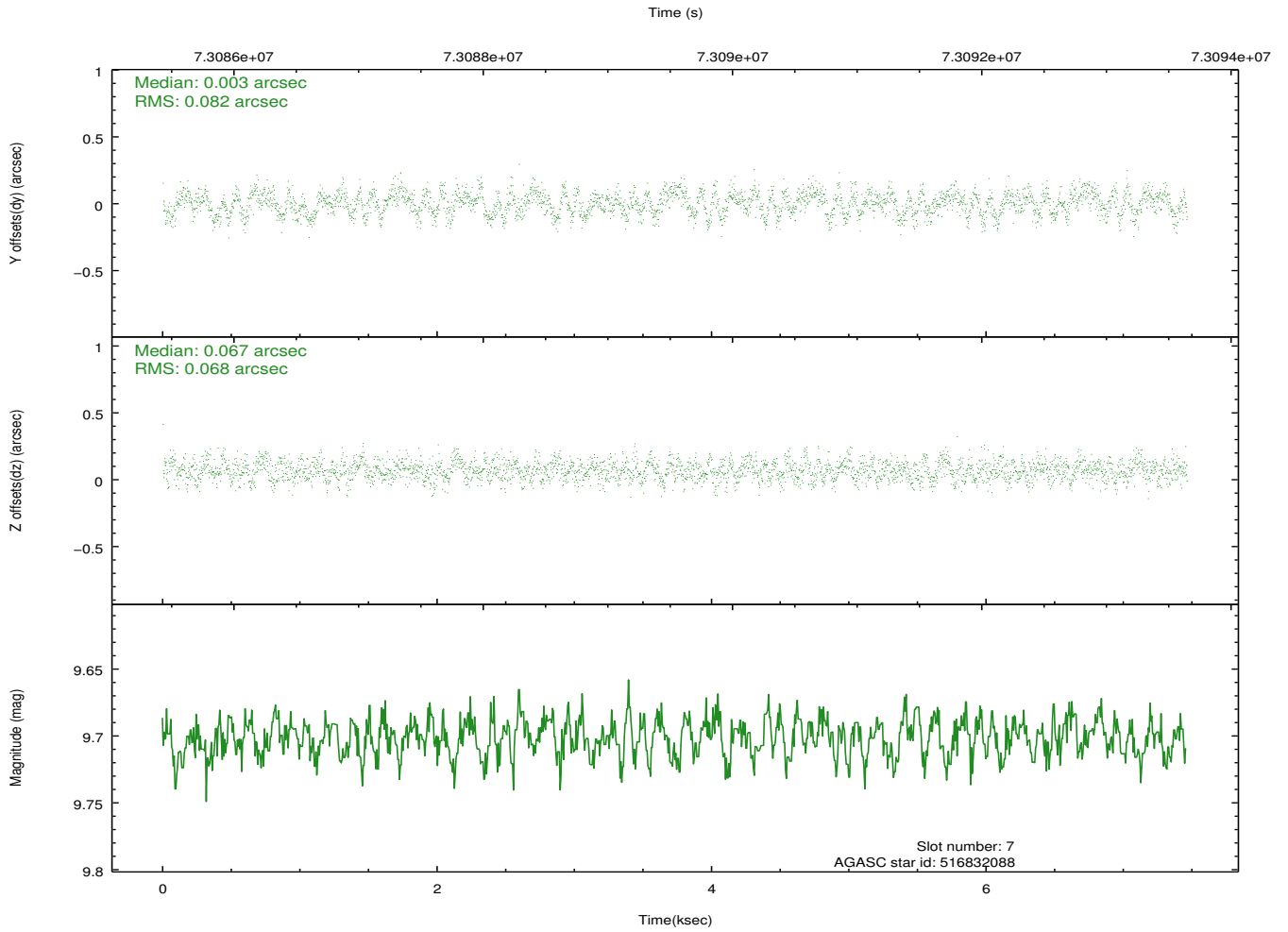
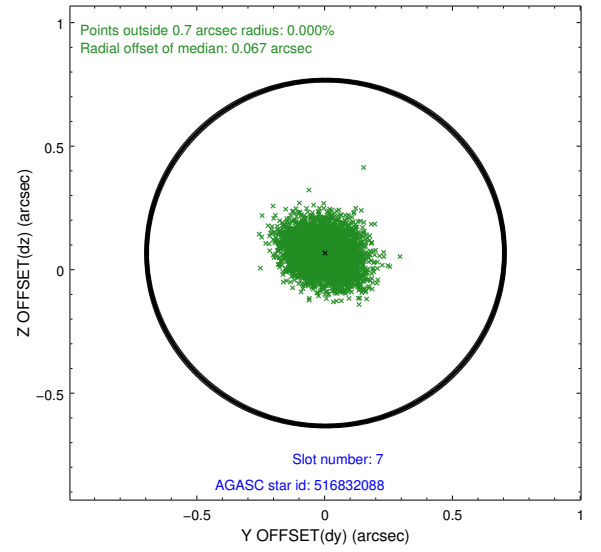
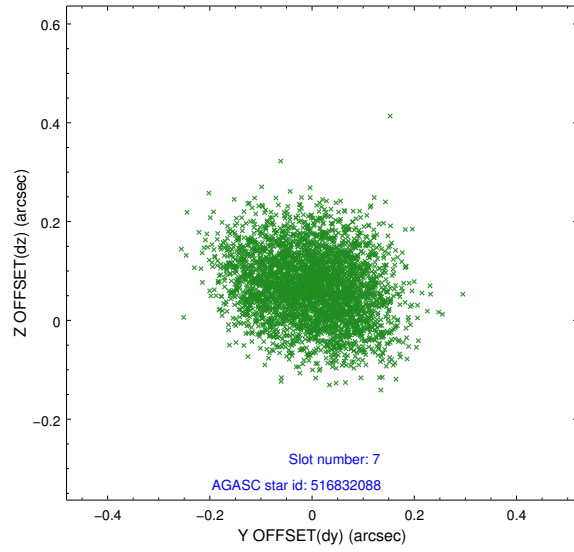


## 2.4.4 Slot 6



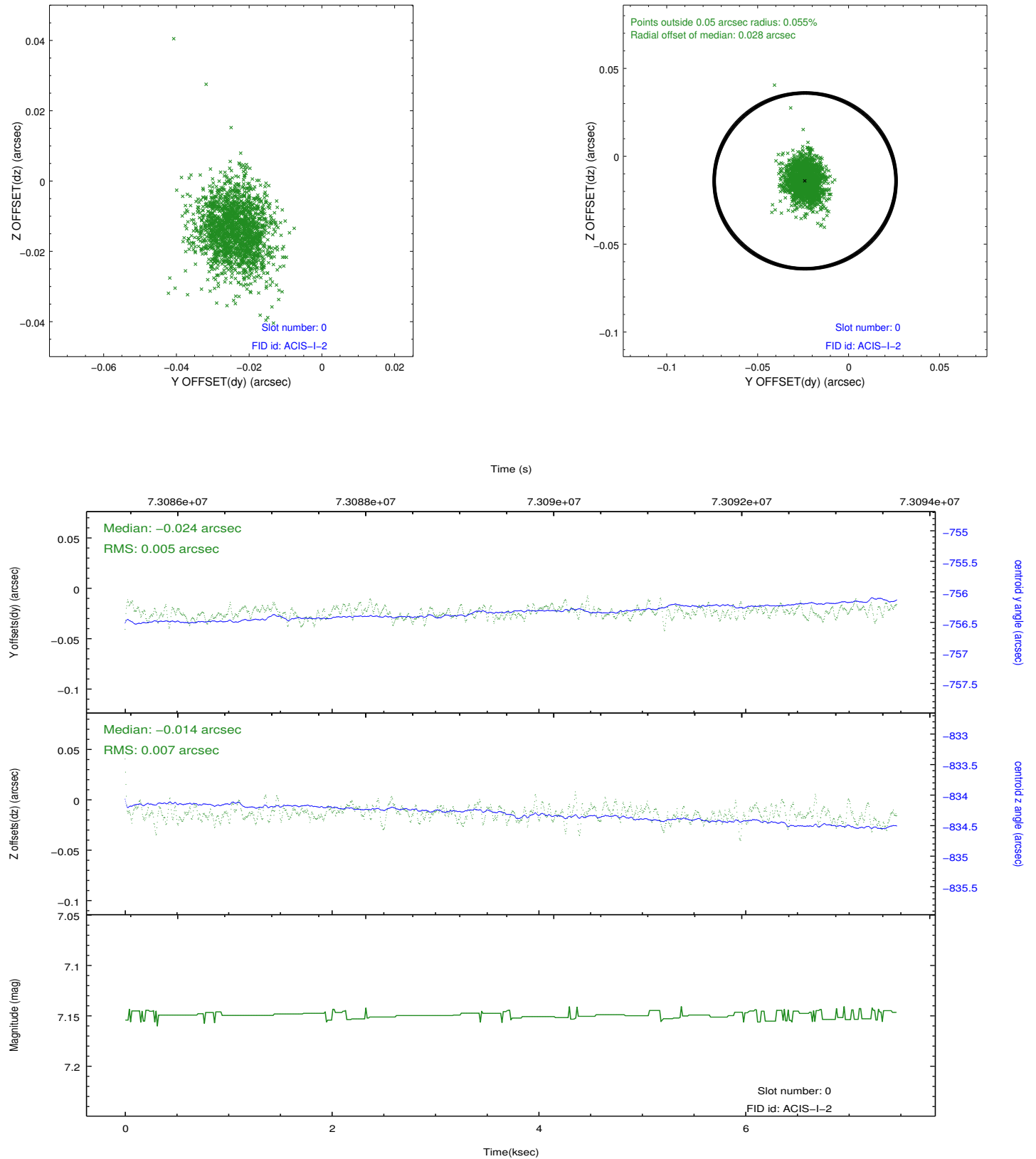


## 2.4.5 Slot 7

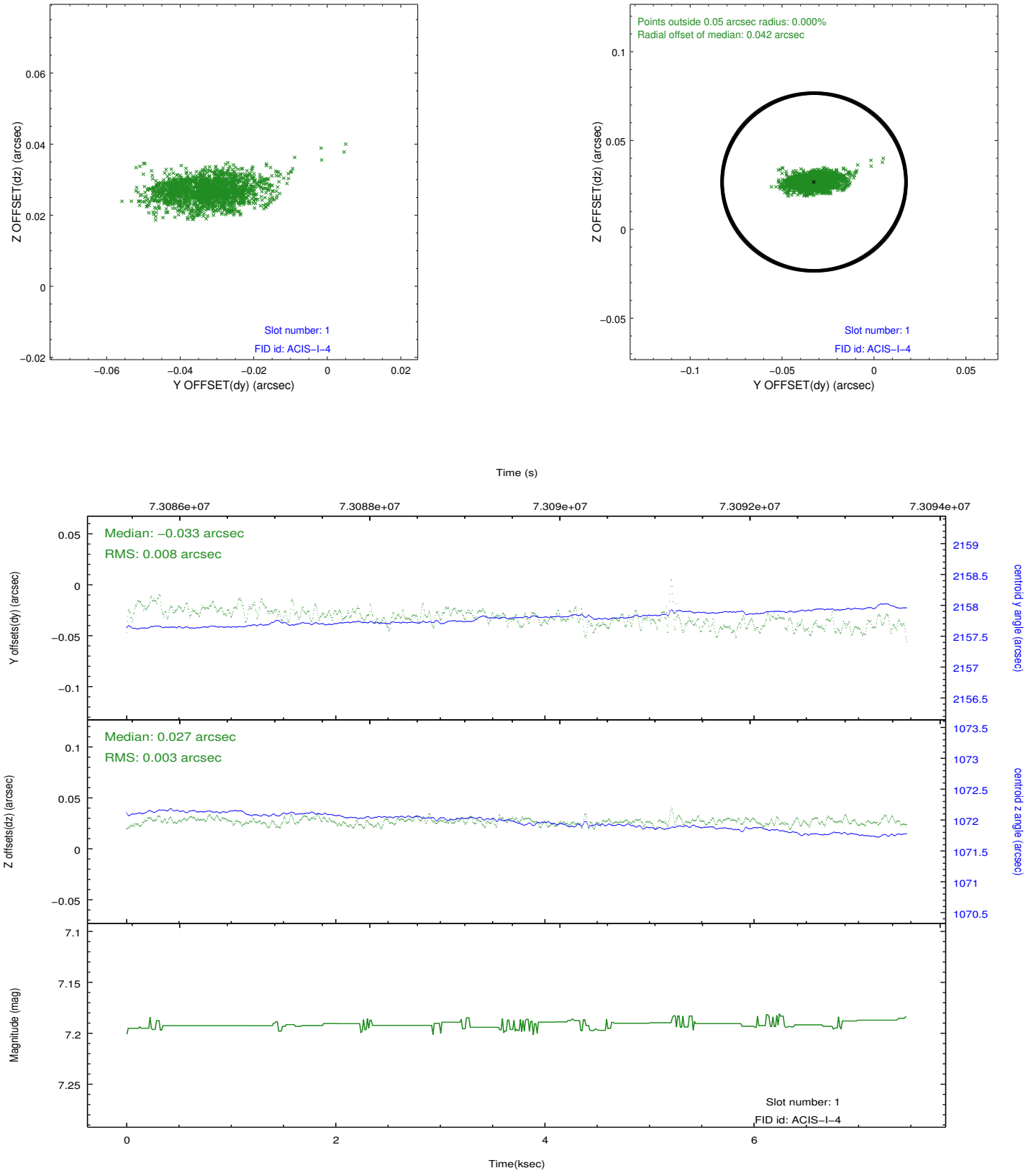


## 2.5 FID Slots

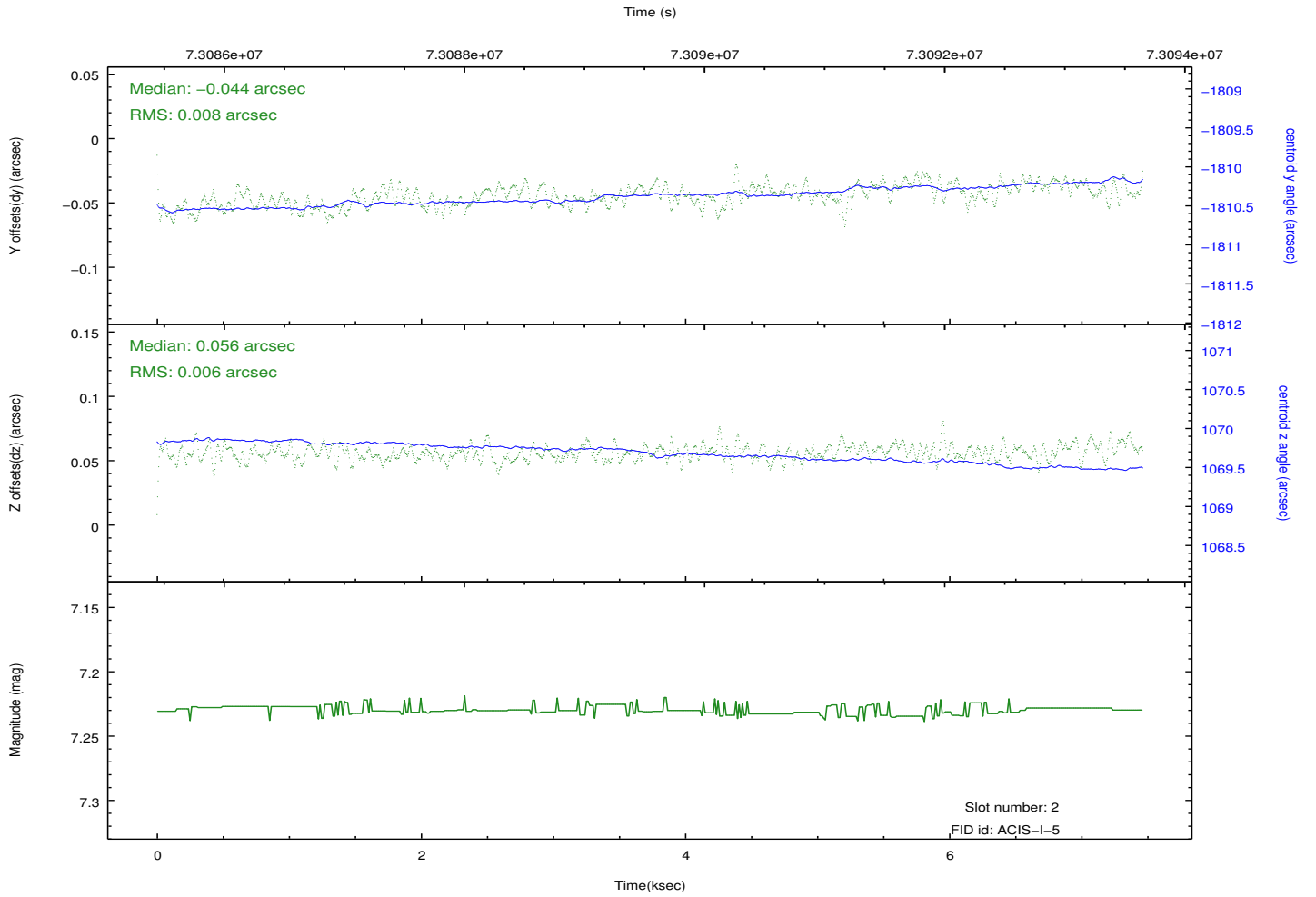
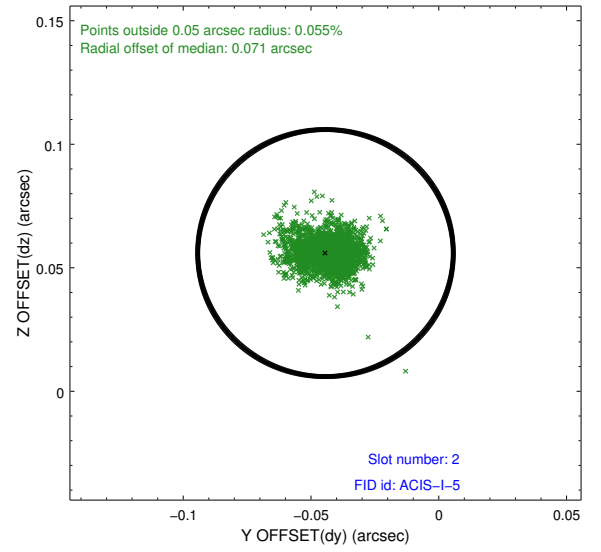
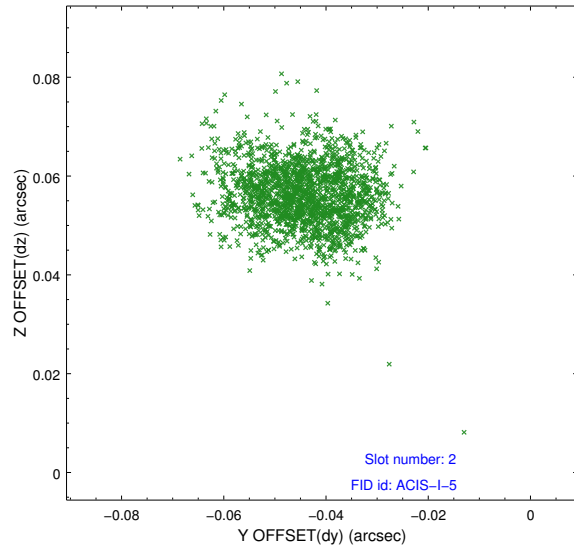
### 2.5.1 Slot 0



## 2.5.2 Slot 1



### 2.5.3 Slot 2



# A Summary

## A.1 Status

V&V Scientist	Jen Lauer
V&V Date (YYYY-MM-DD)	2012.08.28
V&V Edition	1
V&V Disposition and Status	OK
V&V Charge Time	7.001

## A.2 Comments

Charge time for this ObsId remains at previous value of 7.001 ks although with the current processing the charge time would have been 7.039 ksec.