

V&V Reference Report

L2 ASCDS Version : 7.6.10

Observation 936 - L2 Version 001
Chandra X-Ray Center

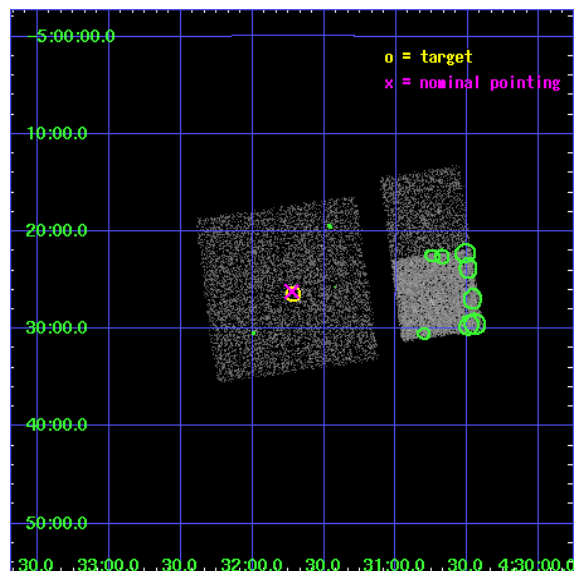
L2 Processing Date : Jun 9 2007

Contents

1	Front	2
2	OBI	3
2.1	OBI	3
2.1.1	Images	3
2.1.2	Bias	3
2.1.3	Parameters	4
2.1.4	Events	4
2.2	Compared Parameters	5
2.3	Aspect	6
2.4	Star Slots	9
2.4.1	Slot 3	9
2.4.2	Slot 4	10
2.4.3	Slot 5	11
2.4.4	Slot 6	12
2.4.5	Slot 7	13
2.5	FID Slots	14
2.5.1	Slot 0	14
2.5.2	Slot 1	15
2.5.3	Slot 2	16
3	Point Sources	17
A	Summary	18
A.1	Status	18
A.2	Comments	18

1 Front

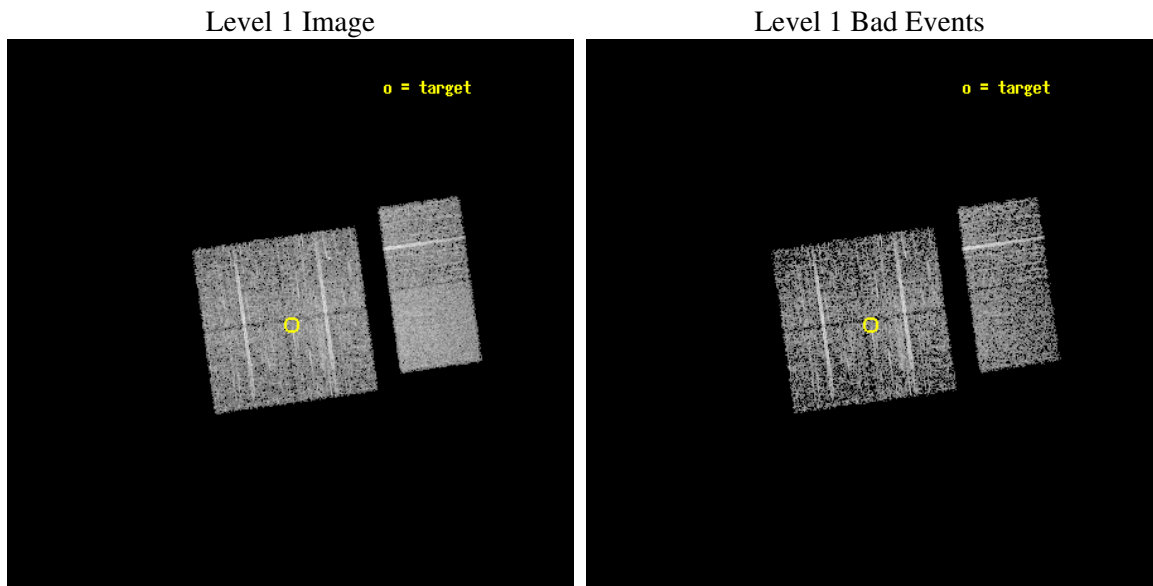
seq_num	900008
obs_id	936
title	AXAF OBSERVATION OF FAINT HARD X-RAY SOURCES DISCOVERED WITH ASCA
observer	DR. TADAYUKI TAKAHASHI
object	AX J0431-0526
dtcycle	0
cycle	P
ra_targ	67.92875
dec_targ	-5.4405
ra_nom	67.93127910879
dec_nom	-5.4363097803359
roll_nom	82.035618917092
revision	2
ontime	3955.2000036836
livetime	3905.1168797014
ontime0	3955.2000036836
ontime1	3951.9590434581
ontime2	3955.2000036836
ontime3	3955.2000036836
ontime6	3955.2000036836
ontime7	3955.2000036836
l2events	24275



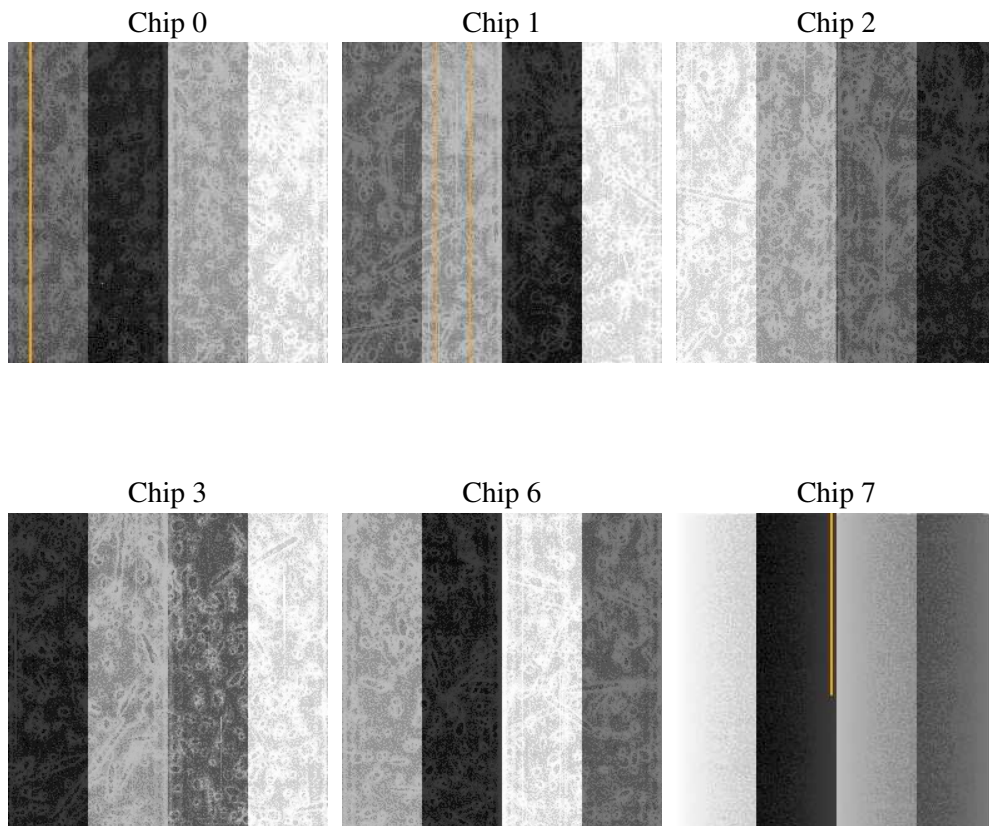
2 OBI

2.1 OBI

2.1.1 Images



2.1.2 Bias



2.1.3 Parameters

obi_num	0
ascdsver	7.6.10
caldsver	3.4.0
date	2007-06-09T16:07:50
revision	2

sched_exp_time	4000.000000
ontime	3955.2000036836
ontime0	3955.2000036836
ontime1	3951.9590434581
ontime2	3955.2000036836
ontime3	3955.2000036836
ontime6	3955.2000036836
ontime7	3955.2000036836
l1events	146825

2.1.4 Events

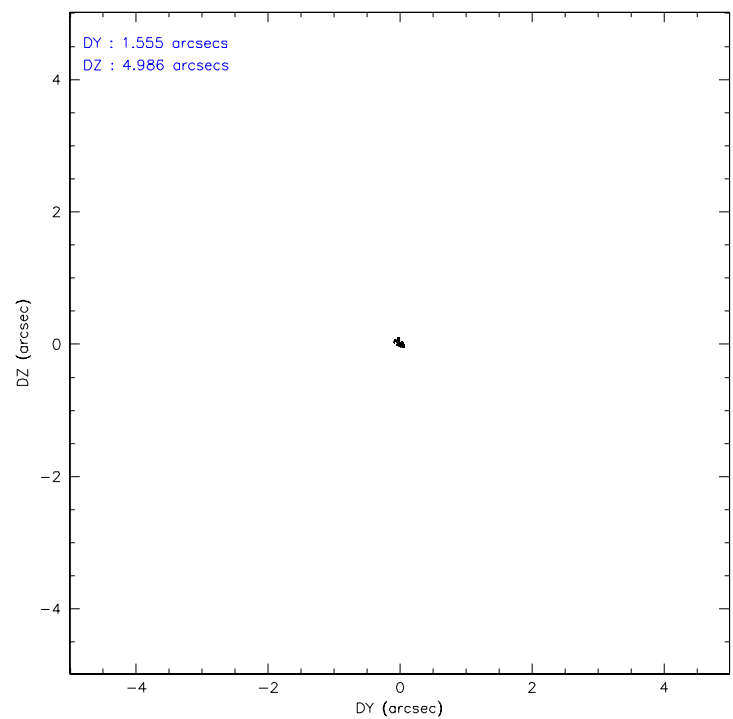
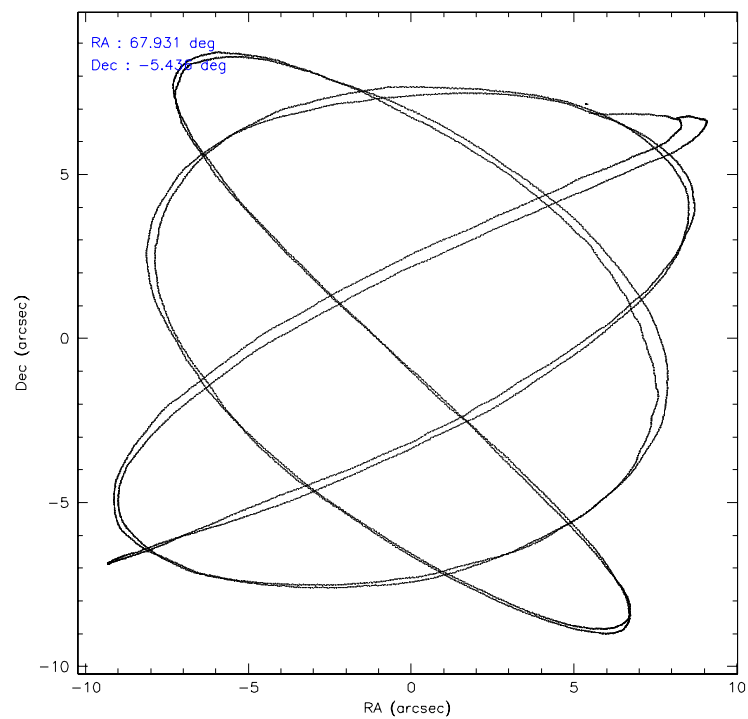
	ccd 0	ccd 1	ccd 2	ccd 3	ccd 6	ccd 7
level 1 events	21766	21377	24395	24045	24928	30314
rejected events	18974	18411	21540	21430	22136	17627
rejected %	87%	86%	88%	89%	88%	58%

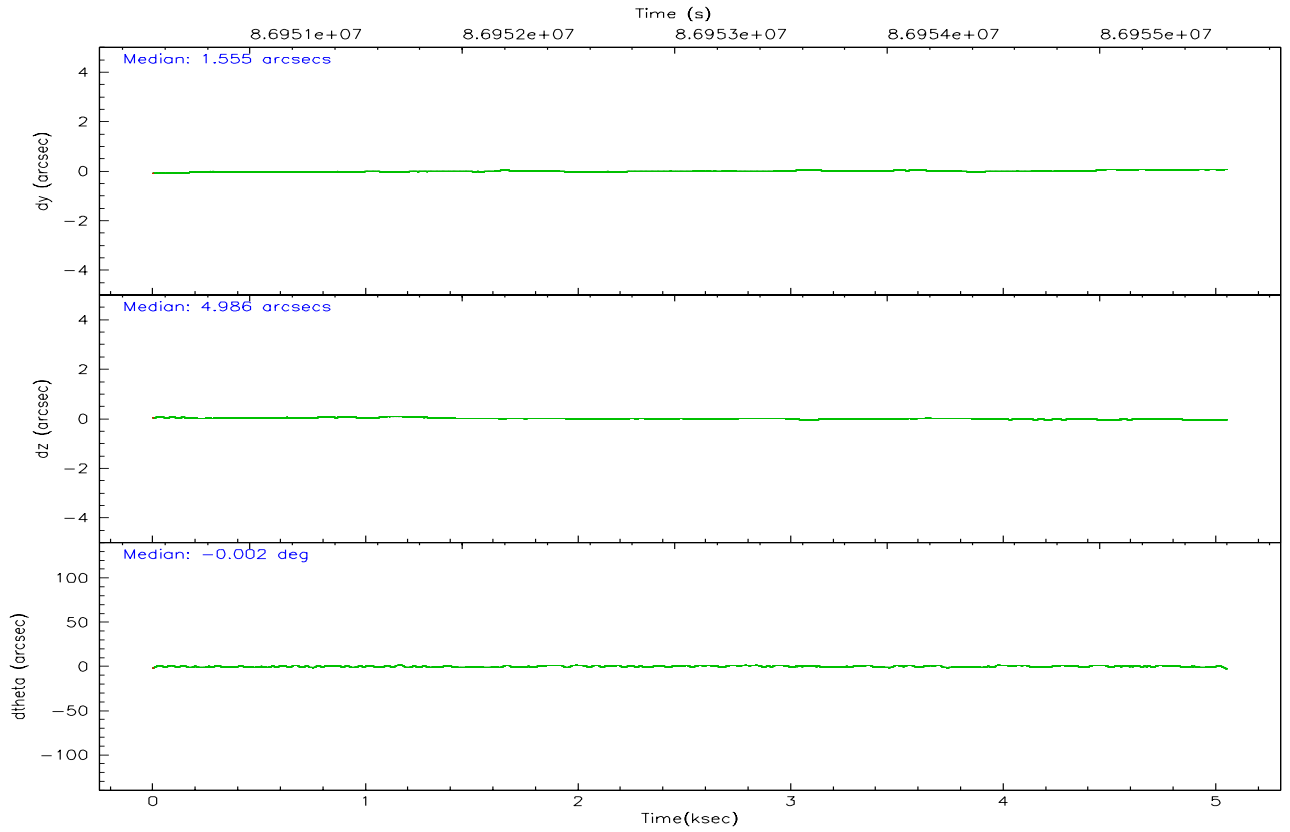
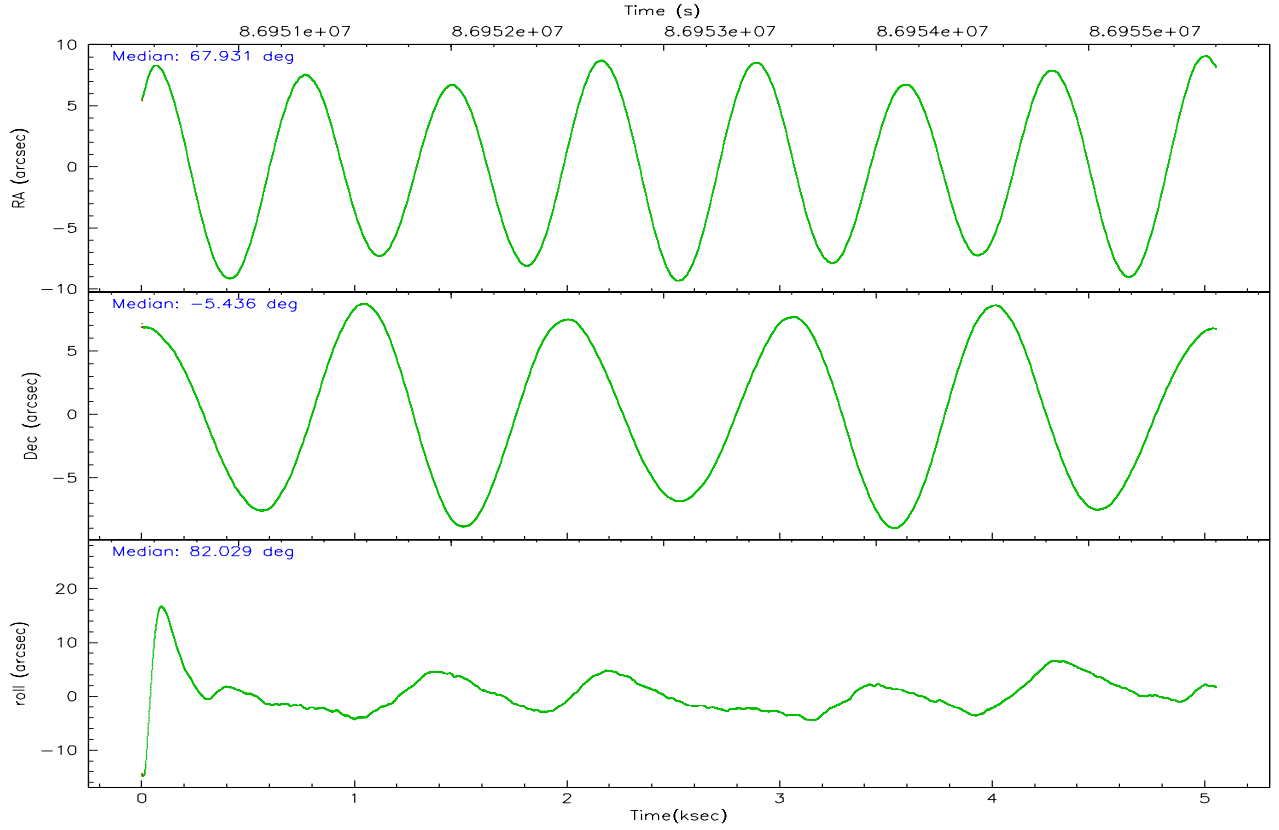
	ccd 0	ccd 1	ccd 2	ccd 3	ccd 6	ccd 7
grade 0 events	1207	1298	1352	1213	1170	1263
	5%	6%	5%	5%	4%	4%
grade 1 events	13	20	8	11	8	29
	0%	0%	0%	0%	0%	0%
grade 2 events	578	564	573	493	537	2478
	2%	2%	2%	2%	2%	8%
grade 3 events	298	282	247	231	284	1190
	1%	1%	1%	0%	1%	3%
grade 4 events	300	328	238	238	270	1184
	1%	1%	0%	0%	1%	3%
grade 5 events	853	824	844	885	968	2919
	3%	3%	3%	3%	3%	9%
grade 6 events	414	502	449	441	531	6580
	1%	2%	1%	1%	2%	21%
grade 7 events	18103	17559	20684	20533	21160	14671
	83%	82%	84%	85%	84%	48%

2.2 Compared Parameters

Parameter	Planned	Actual	Parameter	Planned	Actual
Instrument	ACIS	ACIS	Obspar format version number	6	6
Detector	ACIS-012367	ACIS-012367	Obspar file type	PREDICTED	ACTUAL
Grating	NONE	NONE	Obspar update status	NONE	UPDATED
Data mode	VFAINT	VFAINT	Number of optional ACIS chips dropped	0	0
Observation mode	POINTING	POINTING	On-chip summing requested	N	N
Pointing RA	67.941568	67.93127910879025	Subarray requested	NONE	NONE
Pointing Dec	-5.461857	-5.436309780335892	Alternating exposures requested	N	N
Pointing Roll	81.827991	82.03561891709228	Primary exposure time	3.200000	3.2
SIM focus pos (mm)	-0.782348	-0.7809083437167272			
SIM defocus (mm)	0	0.001439871863259334			
SIM translation stage pos (mm)	-233.592463	-233.5874344608287			
SIM translation stage offset (mm)	0	-0.005018542100998502			
Observation start time	86951600.184000	86950206.144289			
Observation start date	2000-10-03T09:12:16	2000-10-03T08:50:06			
Observation end time	86955600.184000	86956176.257015			
Observation end date	2000-10-03T10:18:56	2000-10-03T10:29:36			
Read mode	TIMED	TIMED			

2.3 Aspect



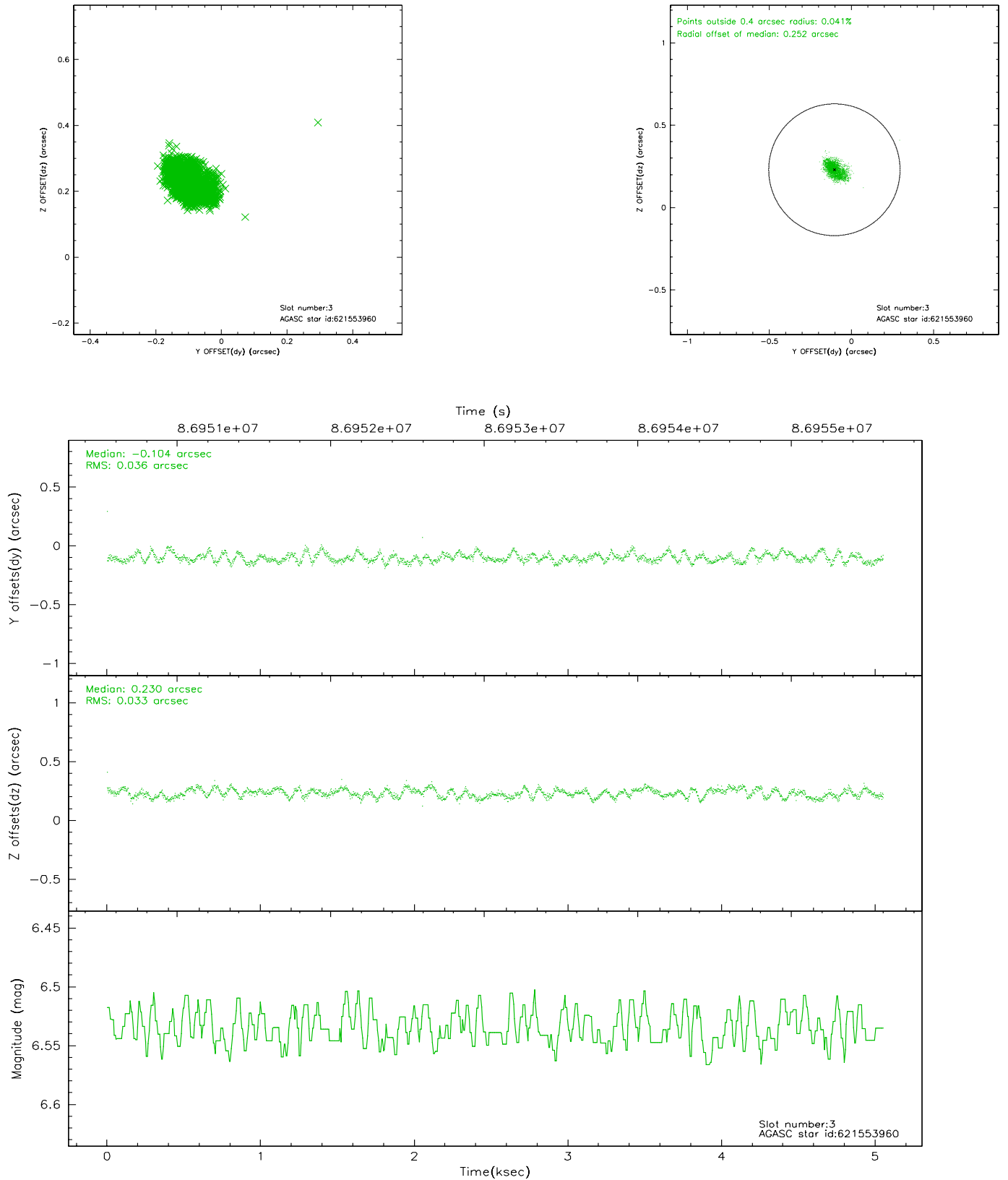


Slot Statistics

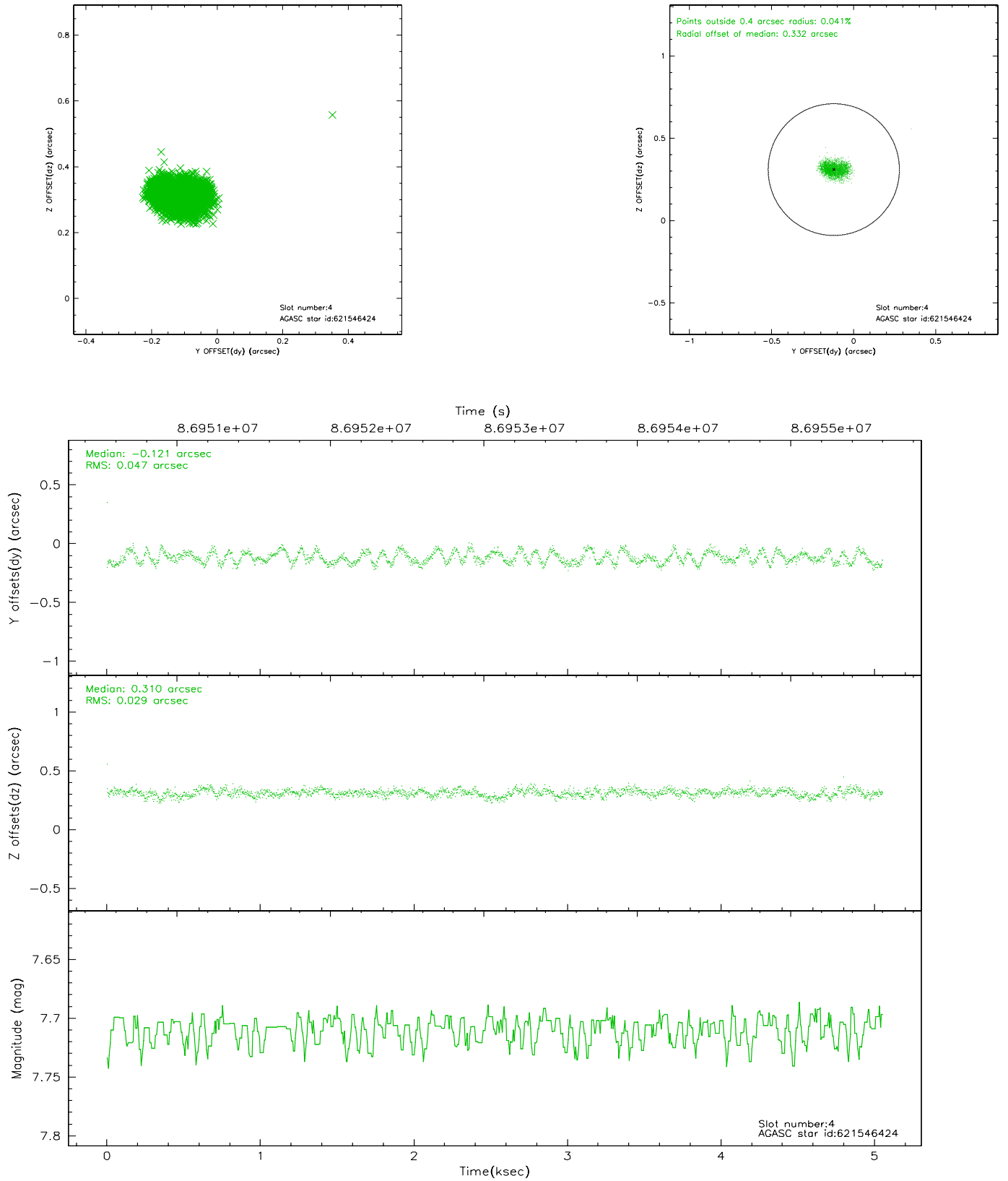
slot	status	id	mag	n_pts	med_dy	med_dz	dr1	dr2	ra	dec	mean_y	mean_z
0	FID	ACIS-I-2	7.15	1232	-0.020	-0.015	0.008	0.014	0.000000	0.000000	-755.91	-834.71
1	FID	ACIS-I-4	7.19	1233	-0.078	0.025	0.006	0.010	0.000000	0.000000	2157.54	1070.91
2	FID	ACIS-I-5	7.23	1233	-0.003	0.059	0.009	0.015	0.000000	0.000000	-1808.18	1070.15
3	GUIDE	621553960	6.54	2466	-0.104	0.230	0.052	0.082	68.435033	-5.309670	793.16	-1672.21
4	GUIDE	621546424	7.71	2463	-0.121	0.310	0.060	0.090	68.622214	-5.138021	1500.06	-2249.83
5	GUIDE	620375512	8.88	2447	0.156	-0.259	0.089	0.144	67.329905	-5.680923	-1092.84	2055.95
6	GUIDE	621548376	9.23	2465	-0.045	-0.065	0.075	0.125	67.690920	-4.978432	1594.08	1138.74
7	GUIDE	620380240	9.64	2461	0.104	-0.220	0.109	0.170	67.333747	-5.510813	-484.67	2131.49

2.4 Star Slots

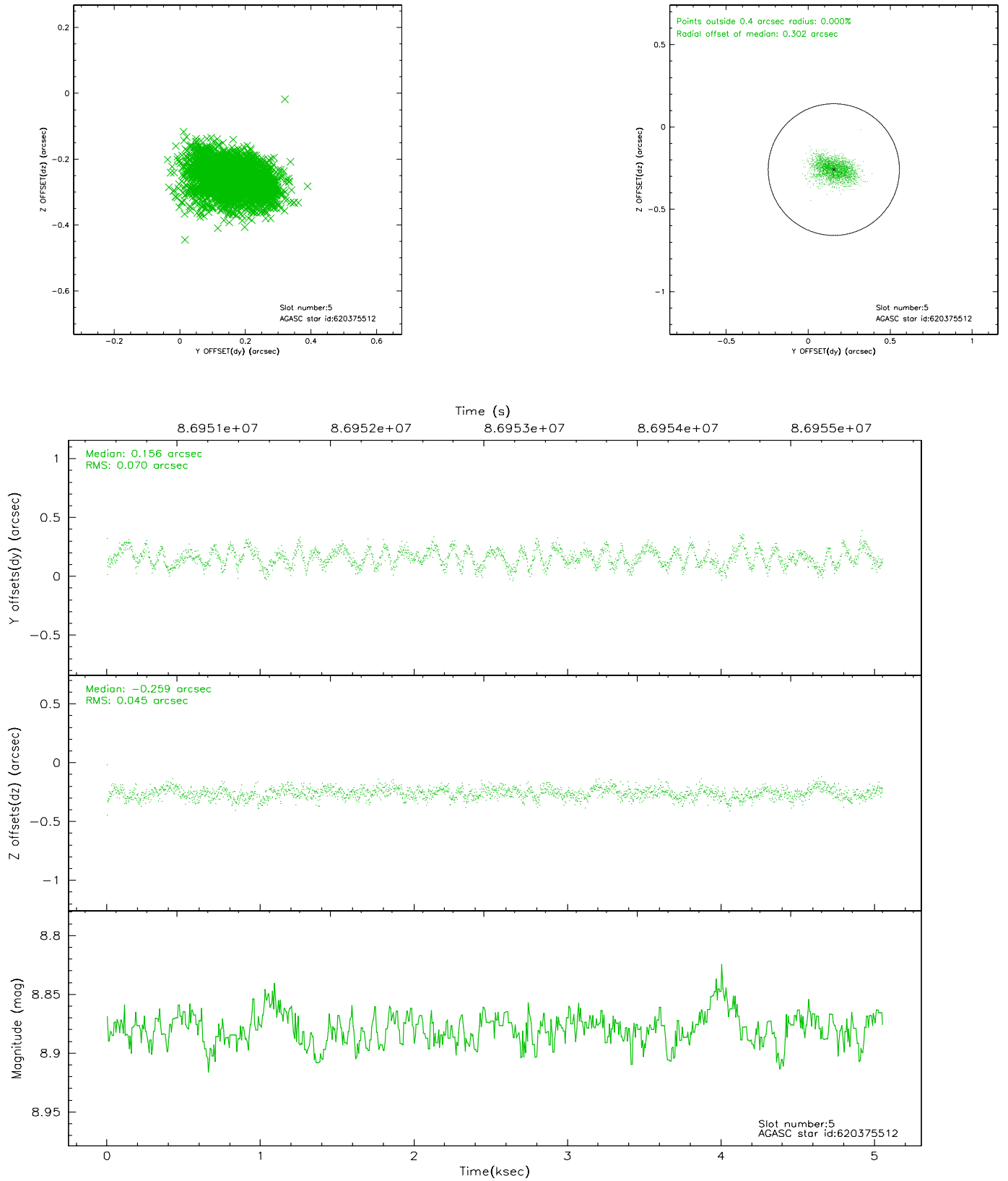
2.4.1 Slot 3



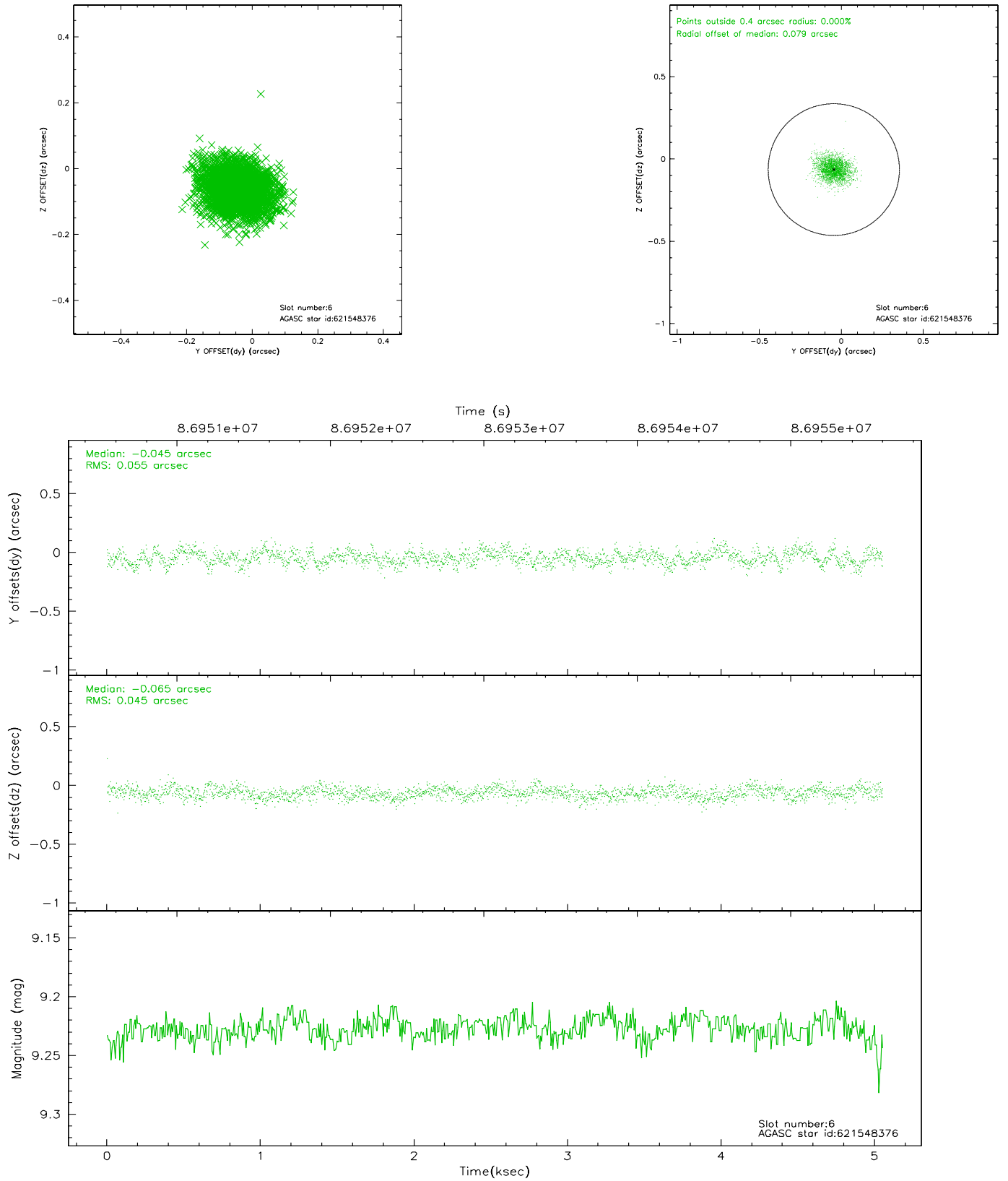
2.4.2 Slot 4



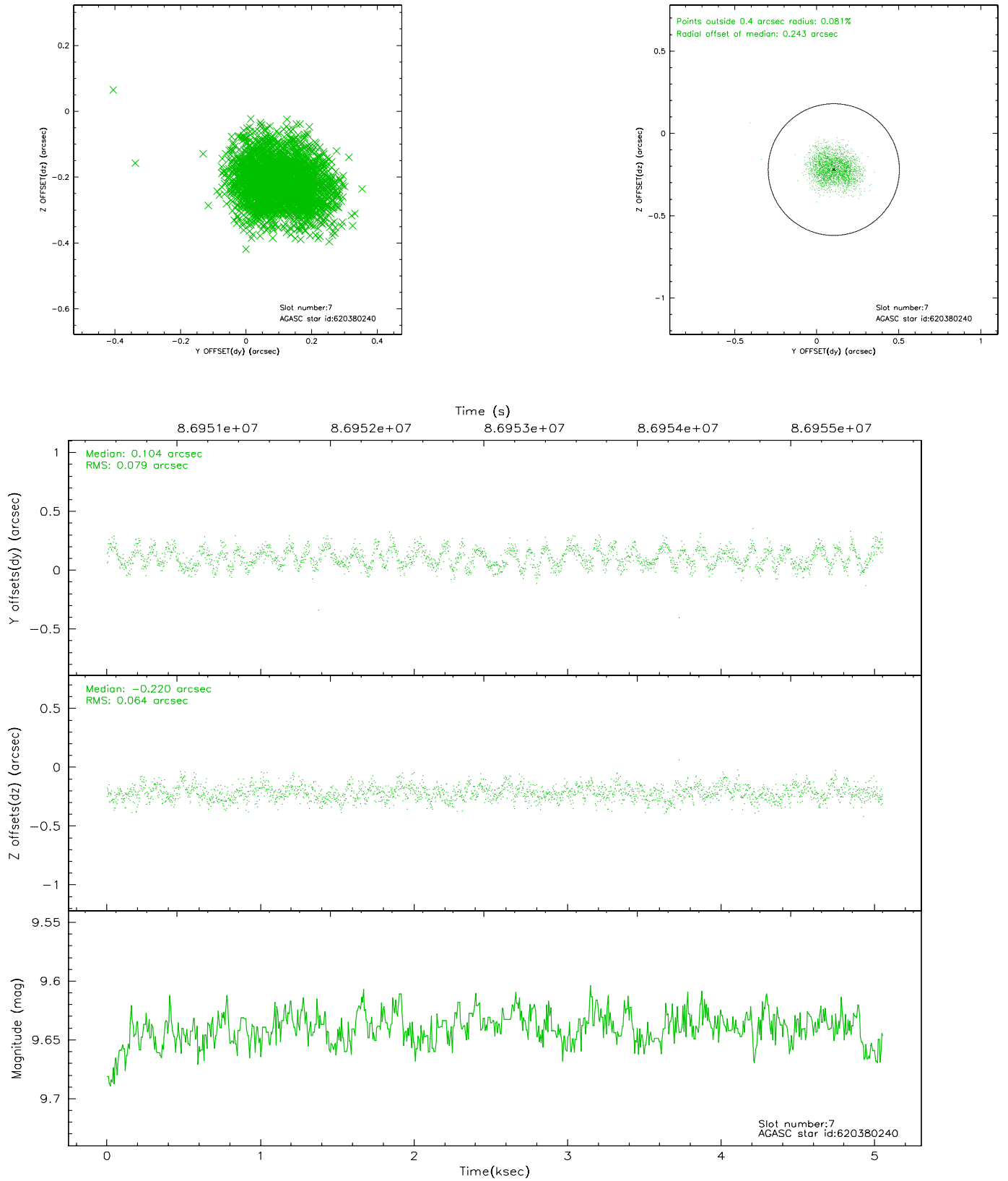
2.4.3 Slot 5



2.4.4 Slot 6

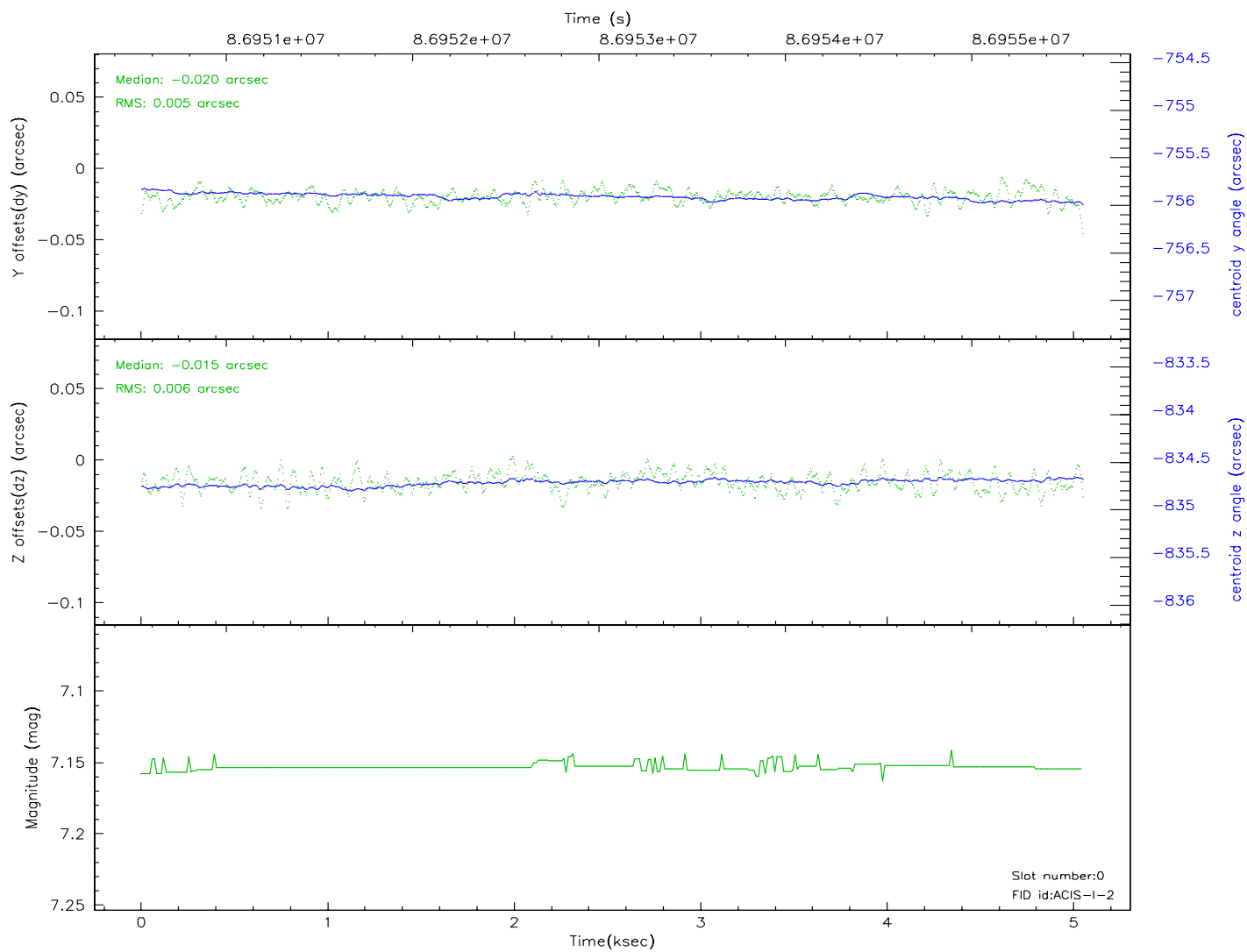
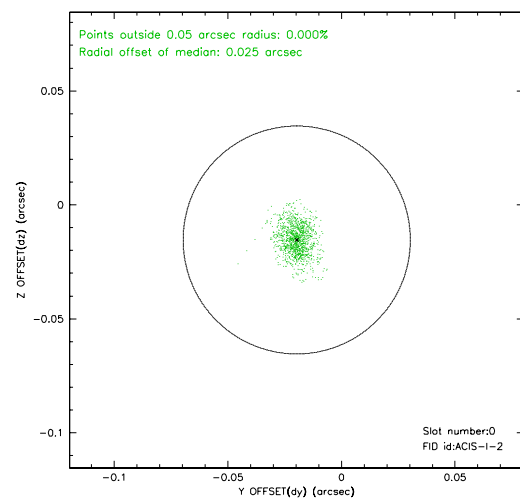
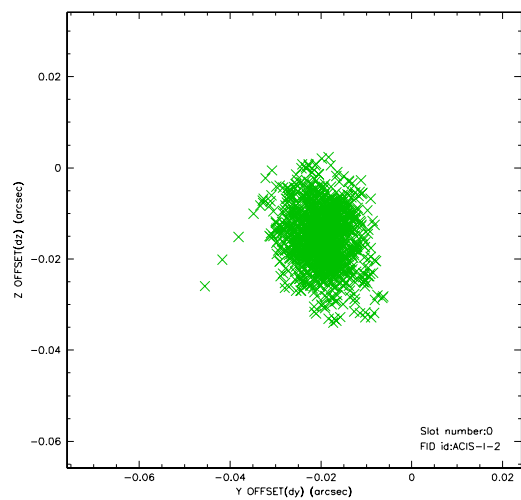


2.4.5 Slot 7

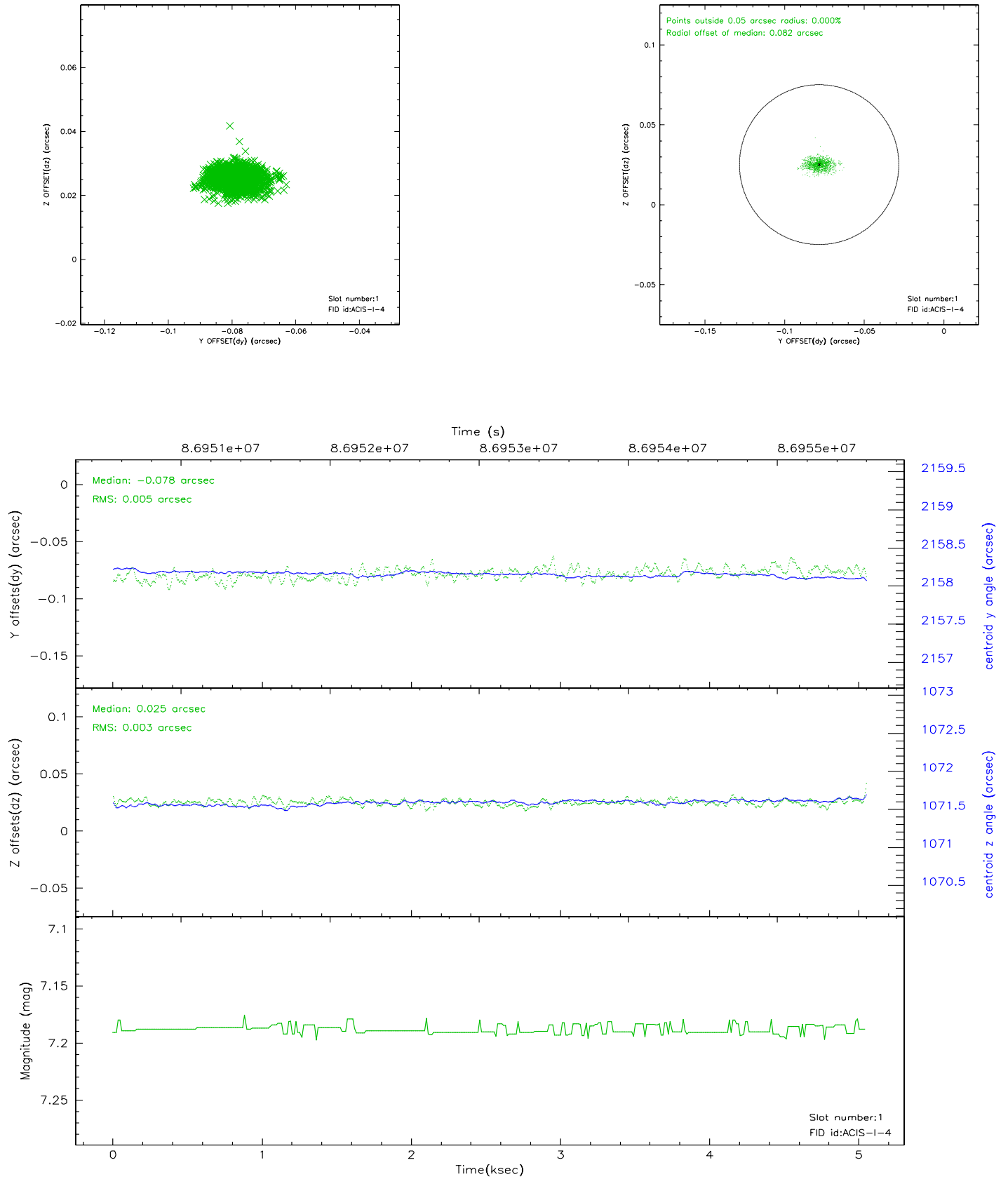


2.5 FID Slots

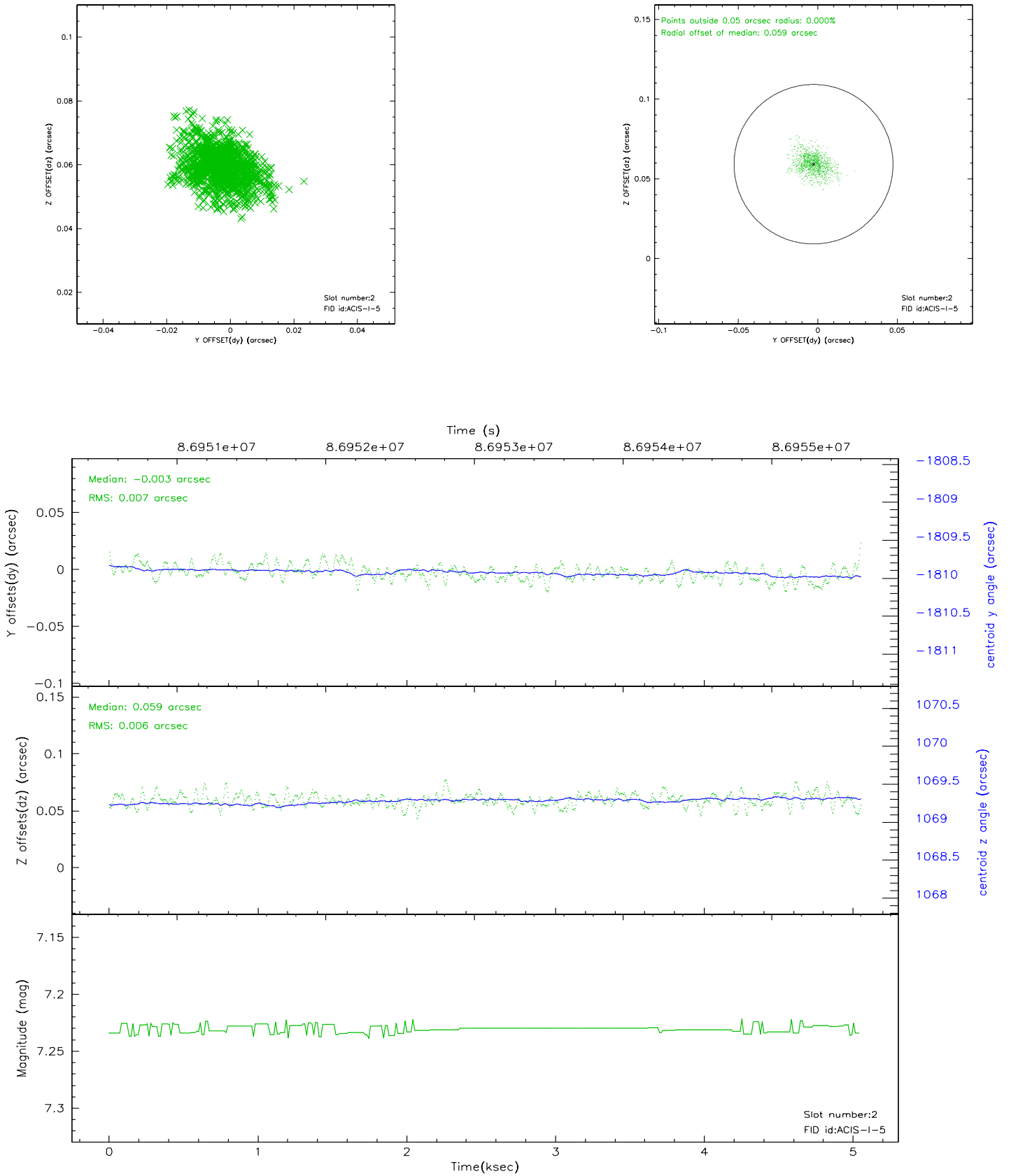
2.5.1 Slot 0



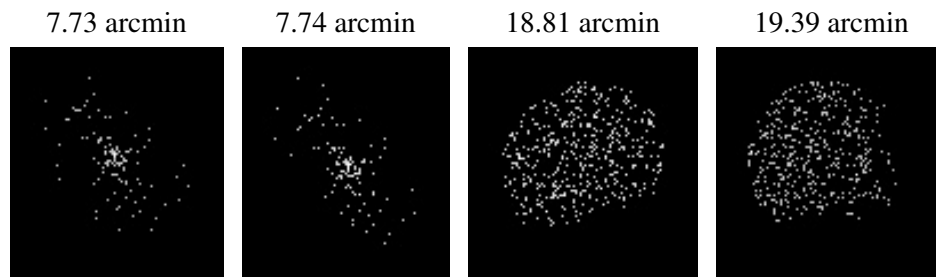
2.5.2 Slot 1



2.5.3 Slot 2



3 Point Sources



A Summary

A.1 Status

V&V Scientist	Beth Sundheim
V&V Date (YYYY-MM-DD)	2007.06.10
V&V Edition	1
V&V Disposition and Status	OK
V&V Charge Time	3.955

A.2 Comments