

V&V Reference Report

L2 ASCDS Version : 8.4.5

Observation 935 - L2 Version 3
Chandra X-Ray Center

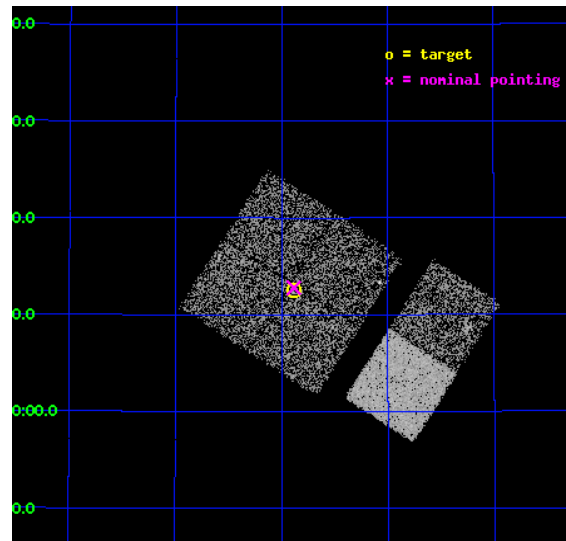
L2 Processing Date : Sep 1 2012

Contents

1	Front	2
2	OBI	3
2.1	OBI	3
2.1.1	Images	3
2.1.2	Bias	3
2.1.3	Parameters	4
2.1.4	Events	4
2.2	Compared Parameters	5
2.3	Aspect	6
2.4	Star Slots	9
2.4.1	Slot 3	9
2.4.2	Slot 4	10
2.4.3	Slot 5	11
2.4.4	Slot 6	12
2.4.5	Slot 7	13
2.5	FID Slots	14
2.5.1	Slot 0	14
2.5.2	Slot 1	15
2.5.3	Slot 2	16
A	Summary	17
A.1	Status	17
A.2	Comments	17

1 Front

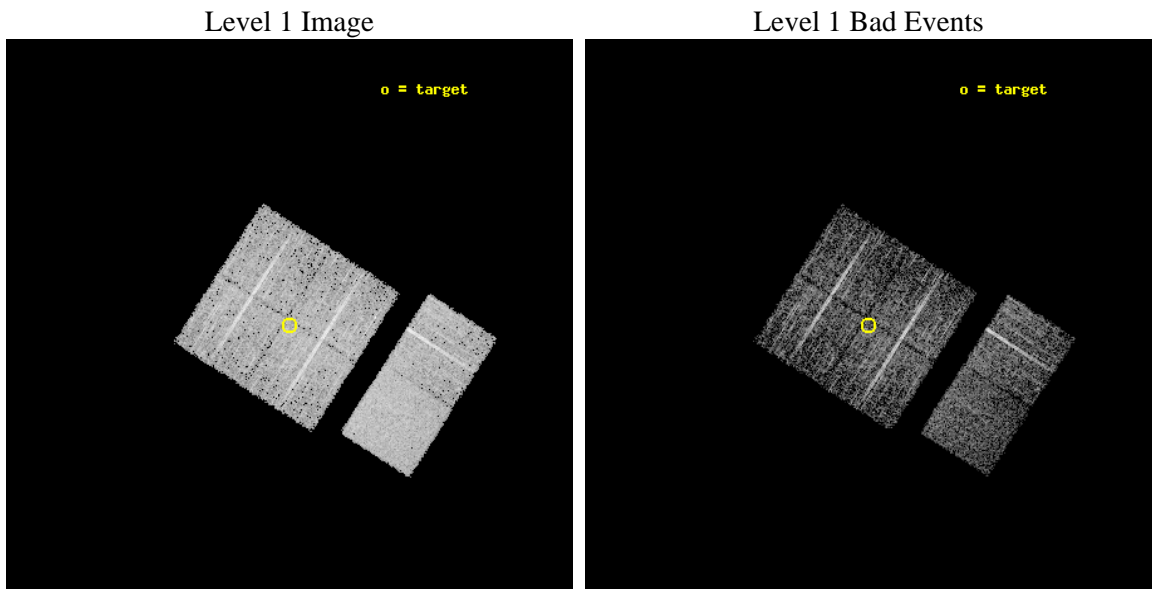
seq_num	900007	Sequence number
obs_id	935	Observation id
title	AXAF OBSERVATION OF FAINT HARD X-RAY SOURCES DISCOVERED WITH ASCA	
observer	Dr. Tadayuki Takahashi	Principal investigator
object	AX J0223+4212	Source name
dtcycle	0	
cycle	P	events from which exps? Prim/Second/Both
ra_targ	35.972083	Observer's specified target RA [deg]
dec_targ	42.208306	Observer's specified target Dec [deg]
ra_nom	35.970913158444	Nominal RA [deg]
dec_nom	42.213039160194	Nominal Dec [deg]
roll_nom	122.74466393708	Nominal Roll [deg]
revision	3	Processing version of data
ontime	4453.2415091693	Sum of GTIs [s]
livetime	4396.8518837601	Livetime [s]
ontime0	4449.8773990124	Sum of GTIs [s]
ontime1	4453.1594291776	Sum of GTIs [s]
ontime2	4453.2004691809	Sum of GTIs [s]
ontime3	4453.2415091693	Sum of GTIs [s]
ontime6	4453.3235891759	Sum of GTIs [s]
ontime7	4453.2825491726	Sum of GTIs [s]
l2events	27193	Number of level 2 events



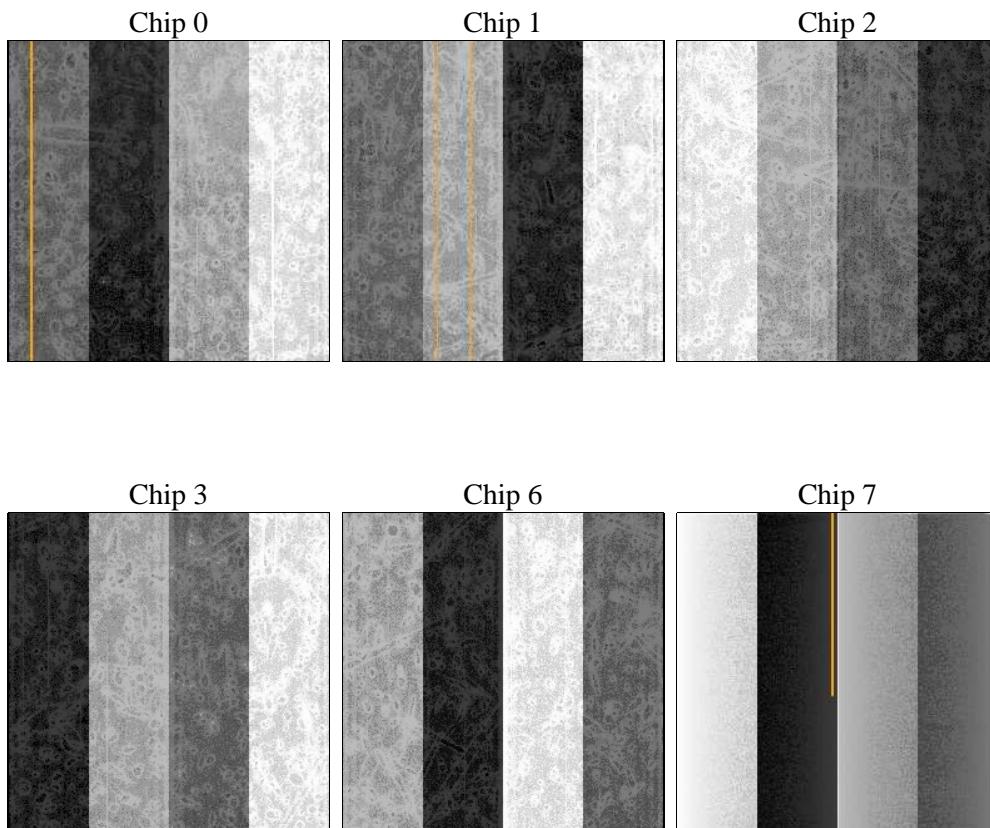
2 OBI

2.1 OBI

2.1.1 Images



2.1.2 Bias



2.1.3 Parameters

obi_num	0	Obi number	sched_exp_time	4500.000000	[s] Scheduled observation exposure time
ascdsver	8.4.5	Processing system revision	ontime	4453.2415091693	Sum of GTIs [s]
caldsver	4.5.1.1	 	ontime0	4449.8773990124	Sum of GTIs [s]
date	2012-09-01T14:23:03	Date and time of file creation	ontime1	4453.1594291776	Sum of GTIs [s]
revision	3	Processing version of data	ontime2	4453.2004691809	Sum of GTIs [s]
			ontime3	4453.2415091693	Sum of GTIs [s]
			ontime6	4453.3235891759	Sum of GTIs [s]
			ontime7	4453.2825491726	Sum of GTIs [s]
			l1events	164057	Number of level 1 events

2.1.4 Events

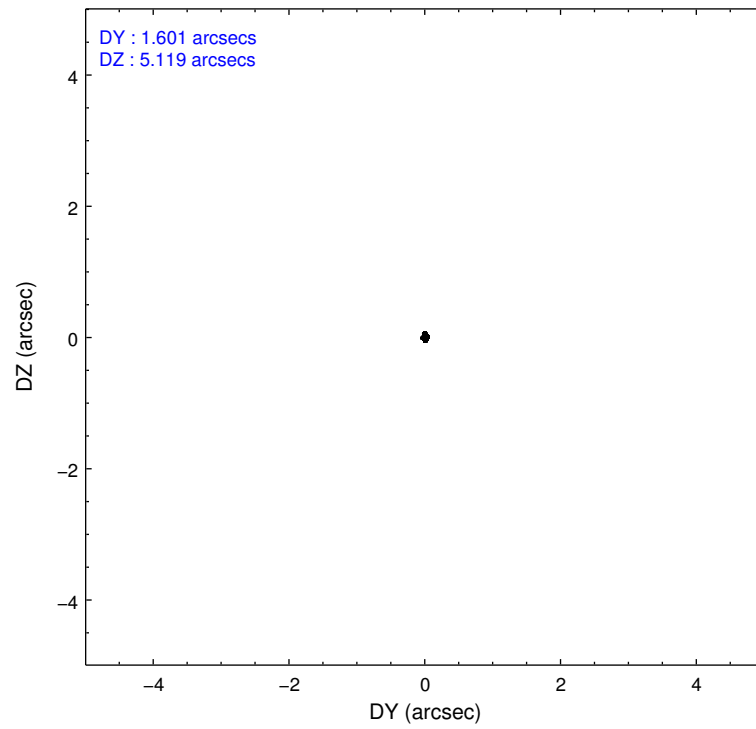
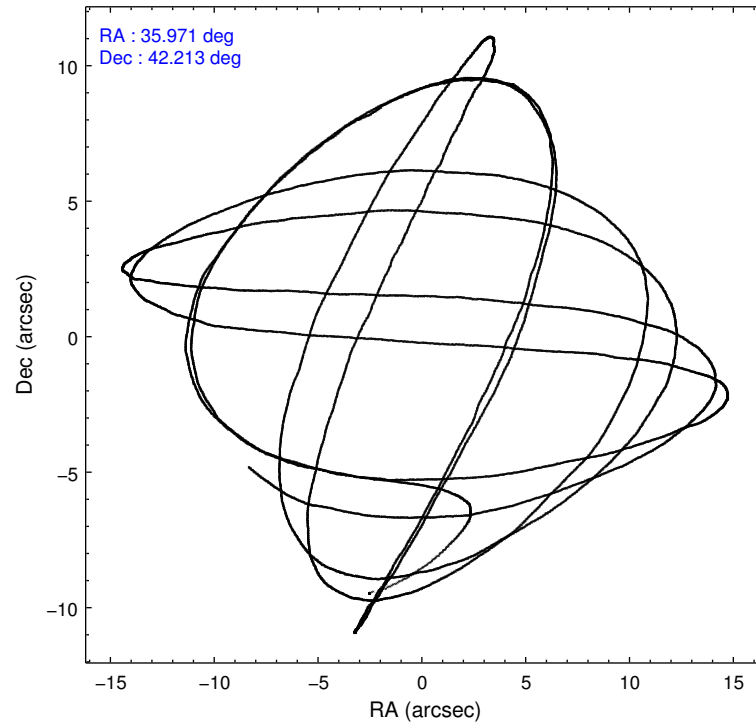
	ccd 0	ccd 1	ccd 2	ccd 3	ccd 6	ccd 7		ccd 0	ccd 1	ccd 2	ccd 3	ccd 6	ccd 7
level 1 events	24135	25444	26927	27169	28069	32313	grade 0 events	1390	1512	1371	1430	1372	1223
rejected events	20907	21967	23748	24011	24814	18700		5%	5%	5%	5%	4%	3%
rejected %	86%	86%	88%	88%	88%	57%	grade 1 events	17	11	14	17	10	24
								0%	0%	0%	0%	0%	0%
							grade 2 events	703	699	699	627	668	2718
								2%	2%	2%	2%	2%	8%
							grade 3 events	322	312	277	274	293	1210
								1%	1%	1%	1%	1%	3%
							grade 4 events	271	371	293	289	275	1253
								1%	1%	1%	1%	0%	3%
							grade 5 events	917	963	845	957	1028	3164
								3%	3%	3%	3%	3%	9%
							grade 6 events	546	588	540	542	652	7230
								2%	2%	2%	1%	2%	22%
							grade 7 events	19969	20988	22888	23033	23771	15491
								82%	82%	85%	84%	84%	47%

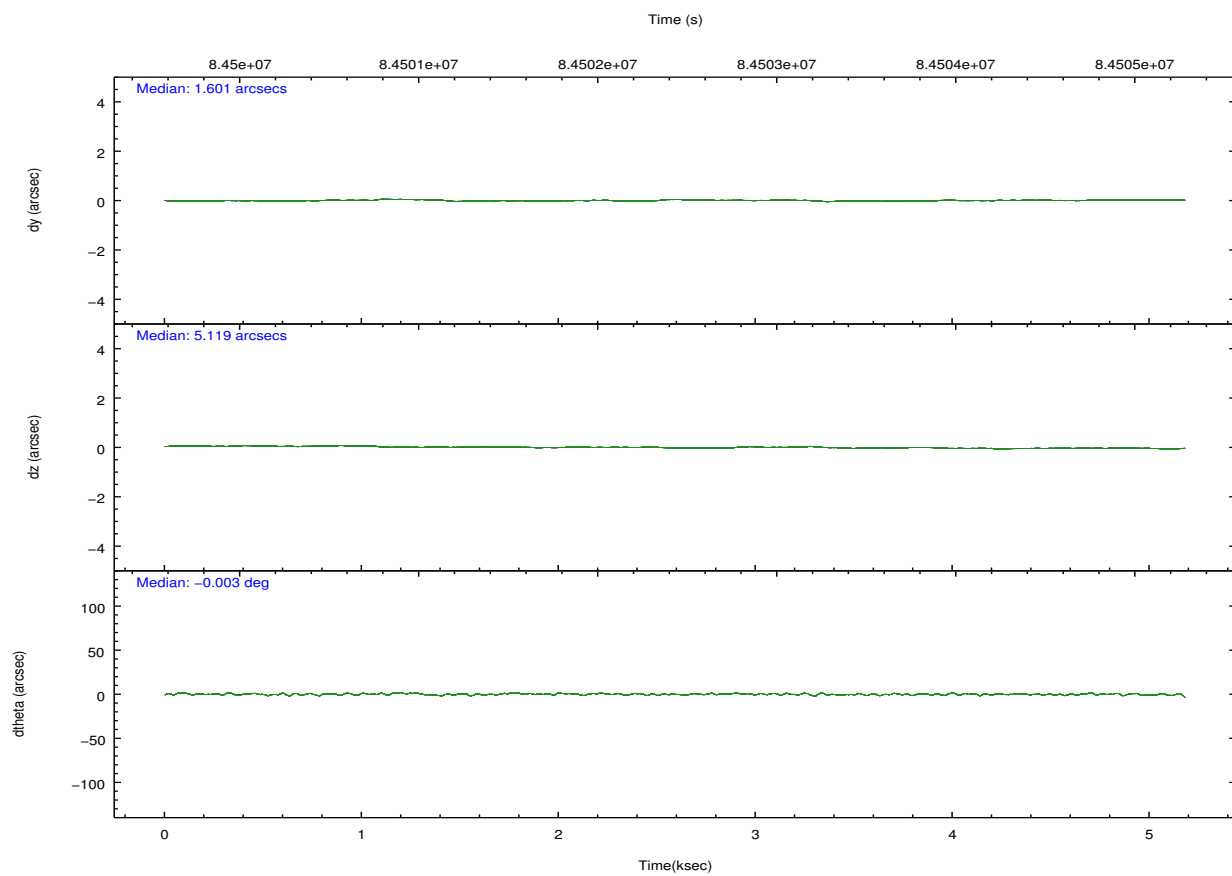
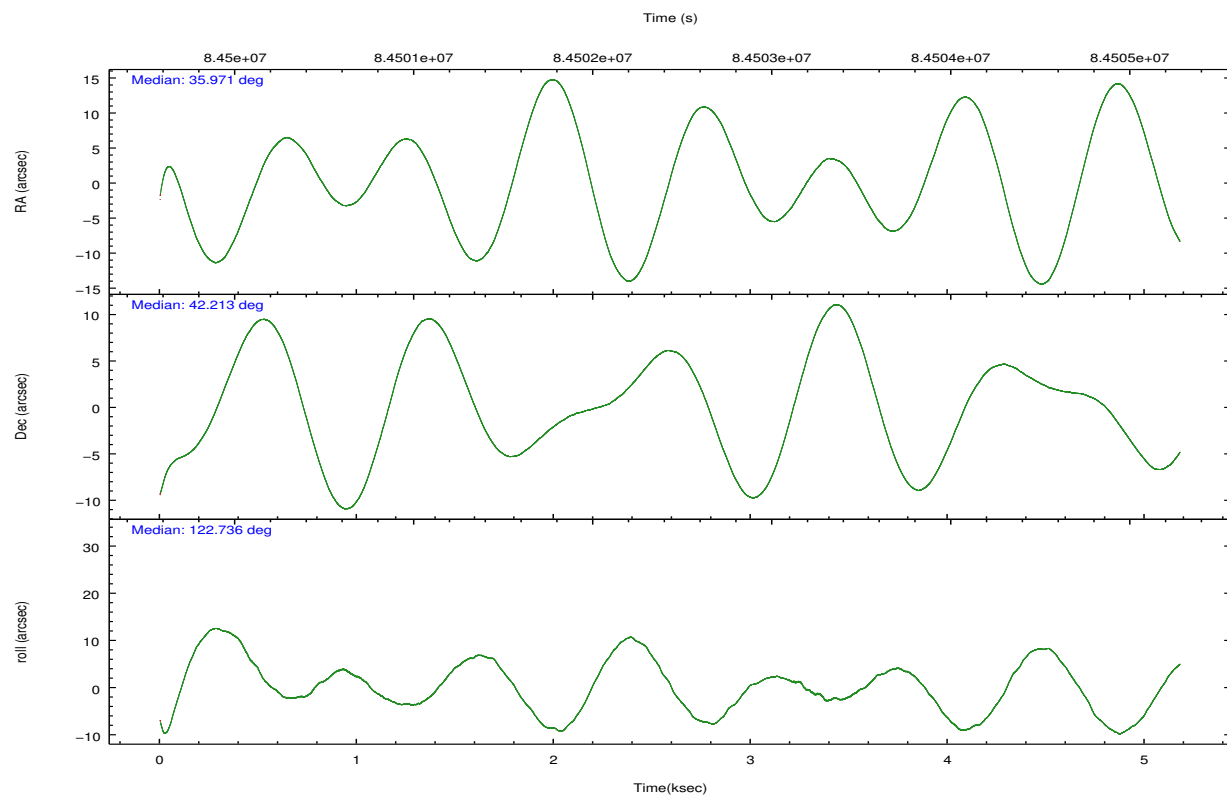
2.2 Compared Parameters

Parameter	Planned	Actual
Instrument	ACIS	ACIS
Detector	ACIS-012367	ACIS-012367
Grating	NONE	NONE
Data mode	VFAINT	VFAINT
Observation mode	POINTING	POINTING
[deg] Pointing RA	36.003946	35.97091315844425
[deg] Pointing Dec	42.200425	42.21303916019389
[deg] Pointing Roll	122.513799	122.7446639370849
[mm] SIM focus pos	-0.782348	-0.7809083437167272
[mm] SIM defocus	0	0.001439871863259334
[mm] SIM translation stage pos	-233.592463	-233.5874344608287
[mm] SIM translation stage offset	0	-0.005018542100998502
[s] Observation start time (MET)	84500524.184000	84499321.37707999
Observation start date	2000-09-05T00:21:00	2000-09-05T00:02:01
[s] Observation end time (MET)	84505024.184000	84505802.452323
Observation end date	2000-09-05T01:36:00	2000-09-05T01:50:02
Read mode	TIMED	TIMED

Parameter	Planned	Actual
Obspar format version number	7	7
Obspar file type	PREDICTED	ACTUAL
Obspar update status	NONE	UPDATED
Number of optional ACIS chips dropped	0	0
On-chip summing requested	N	N
Subarray requested	NONE	NONE
Alternating exposures requested	N	N
[s] Primary exposure time	0.000000	3.2

2.3 Aspect



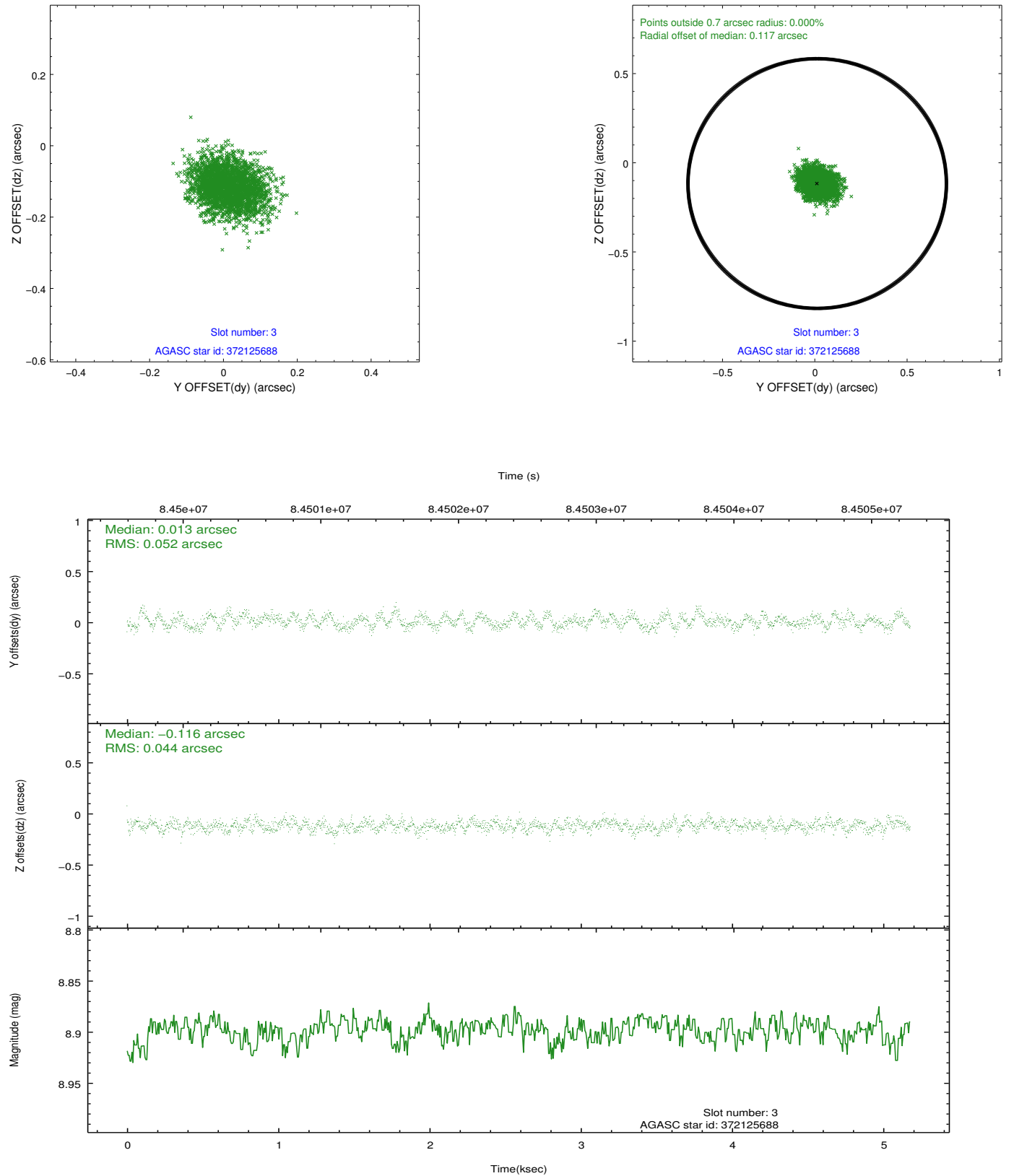


Slot Statistics

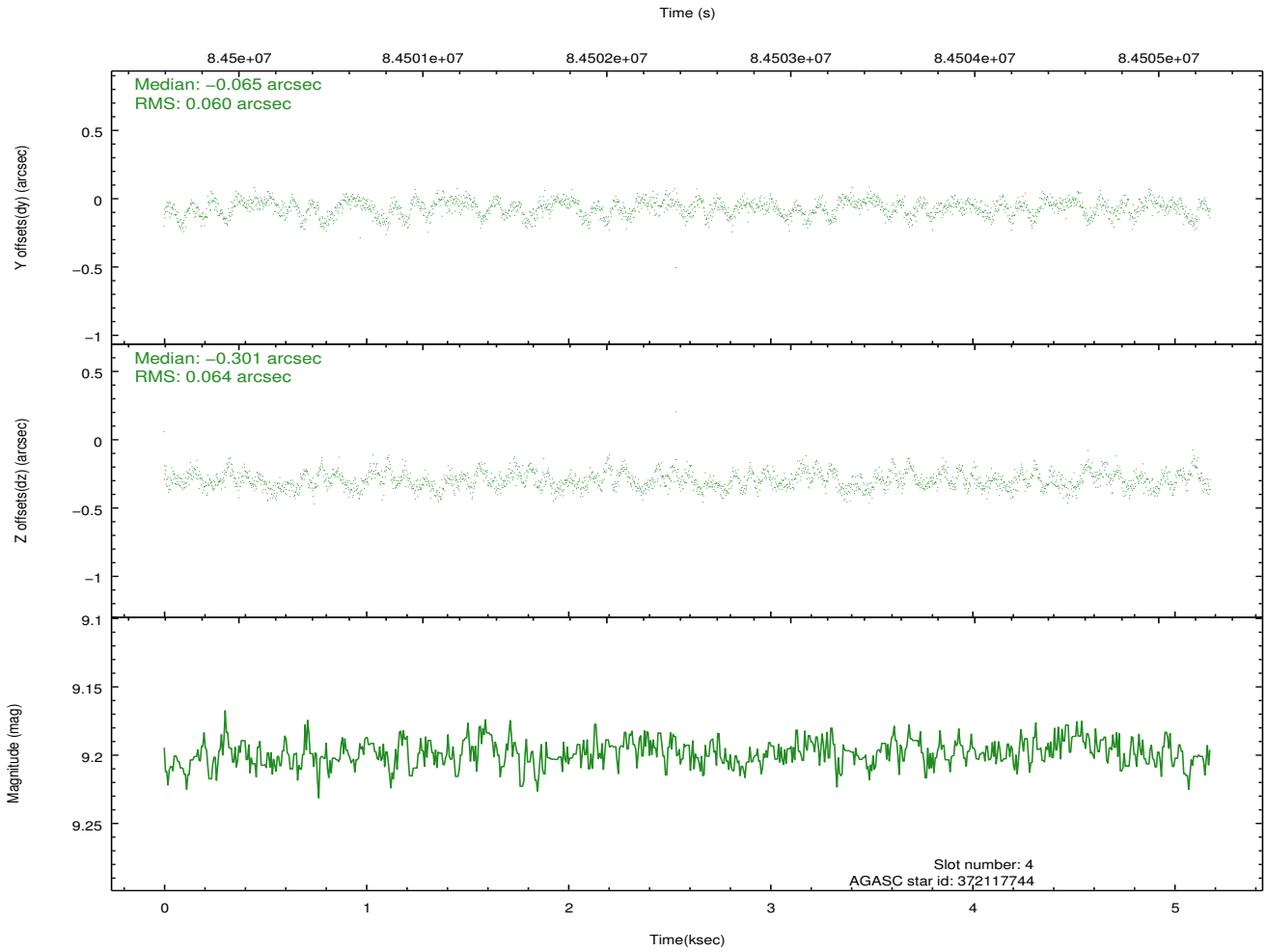
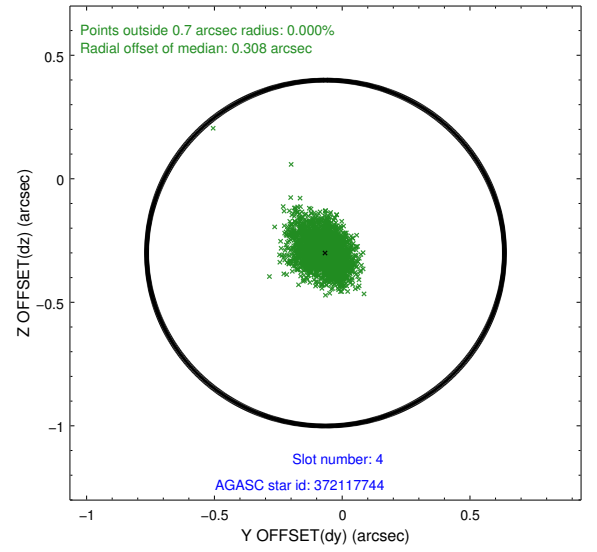
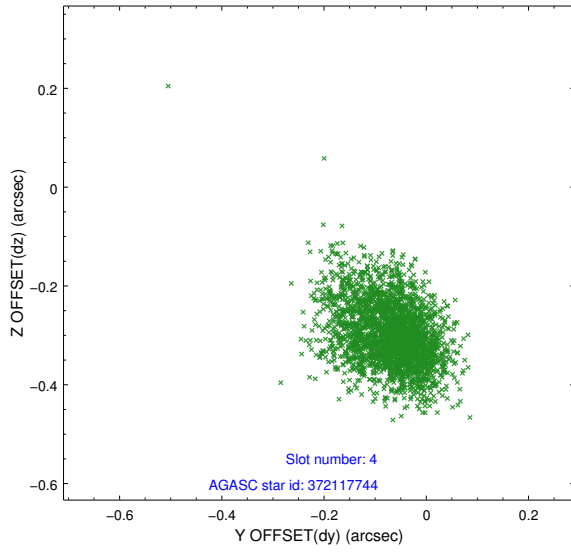
slot	status	id	mag	n_pts	med_dy	med_dz	dr1	dr2	ra	dec	mean_y	mean_z
0	FID	ACIS-I-2	7.15	1264	-0.056	-0.016	0.007	0.011	0.000000	0.000000	-755.99	-834.85
1	FID	ACIS-I-4	7.19	1264	-0.028	0.027	0.007	0.012	0.000000	0.000000	2157.55	1070.82
2	FID	ACIS-I-6	7.27	1263	-0.015	0.052	0.009	0.015	0.000000	0.000000	405.61	1714.33
3	GUIDE	372125688	8.90	2527	0.013	-0.116	0.074	0.116	35.571507	41.884148	-335.56	1587.40
4	GUIDE	372117744	9.20	2526	-0.065	-0.301	0.091	0.150	35.244211	42.008785	517.03	2079.87
5	GUIDE	372125704	9.69	2527	-0.186	0.205	0.087	0.142	36.176193	42.780843	1517.38	-1506.14
6	GUIDE	372120640	9.67	2527	0.176	0.072	0.091	0.151	36.428641	41.991235	-1243.26	-555.90
7	GUIDE	372129888	9.54	2526	0.063	0.139	0.086	0.141	36.789935	42.174459	-1198.65	-1723.73

2.4 Star Slots

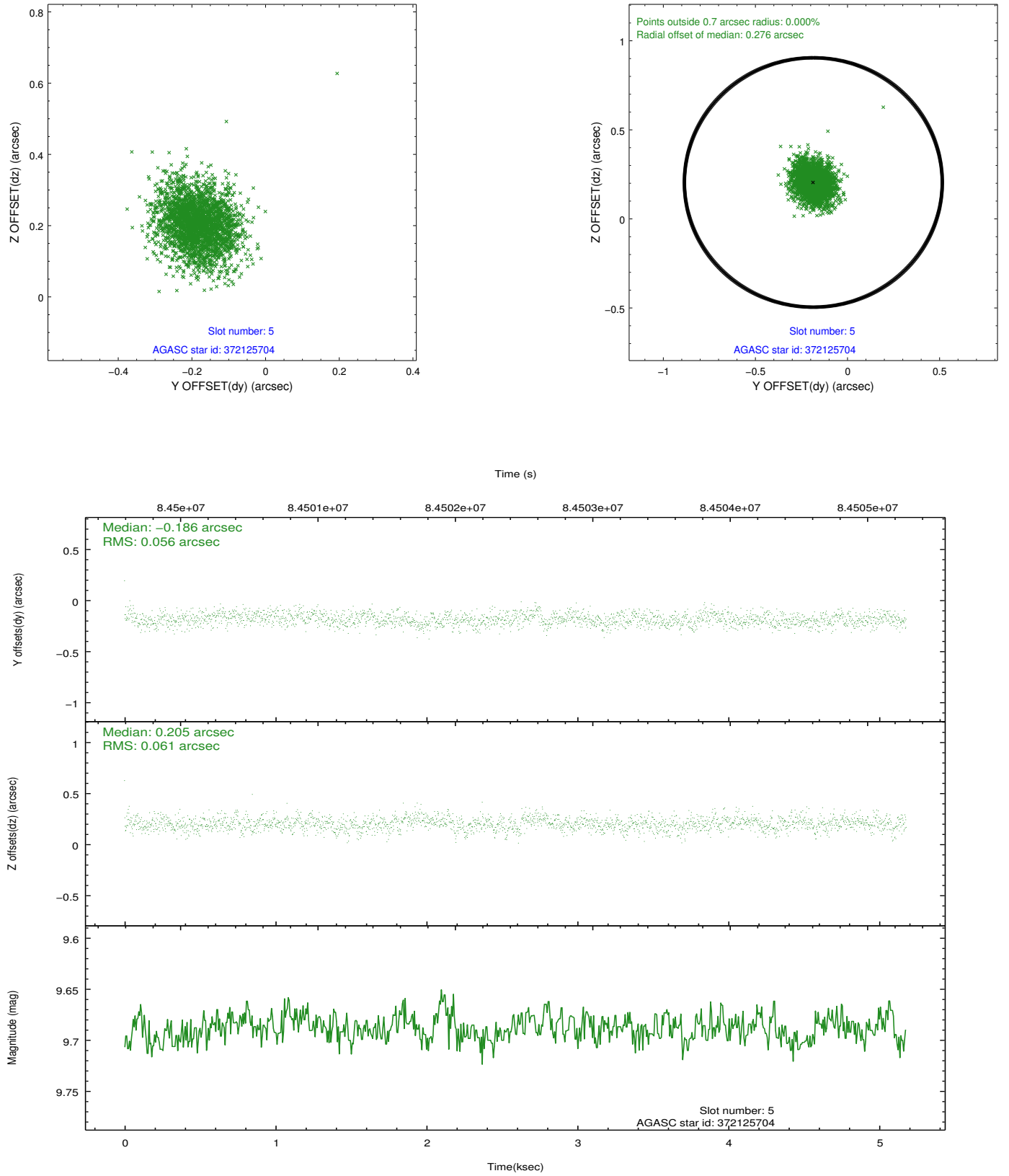
2.4.1 Slot 3



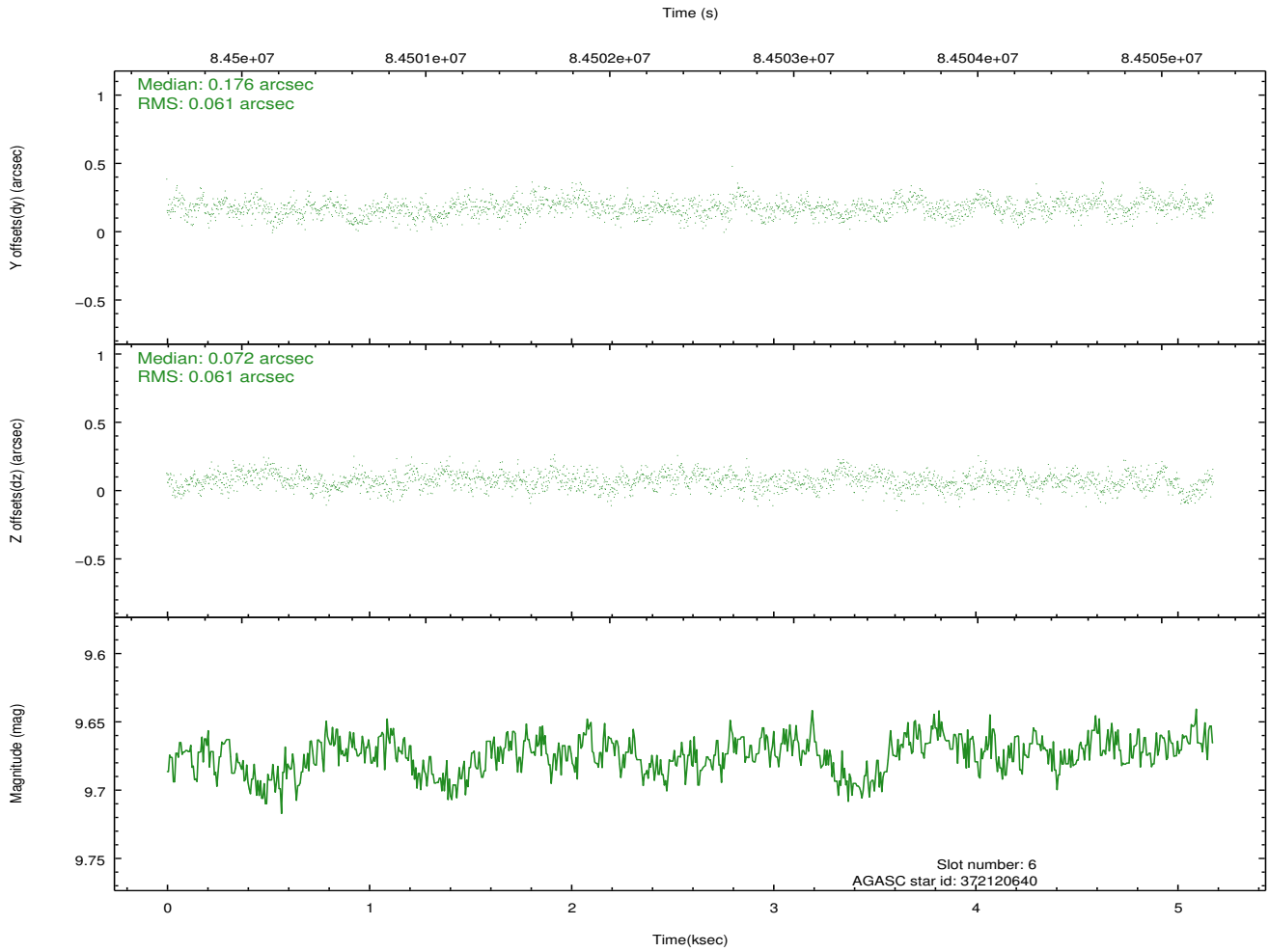
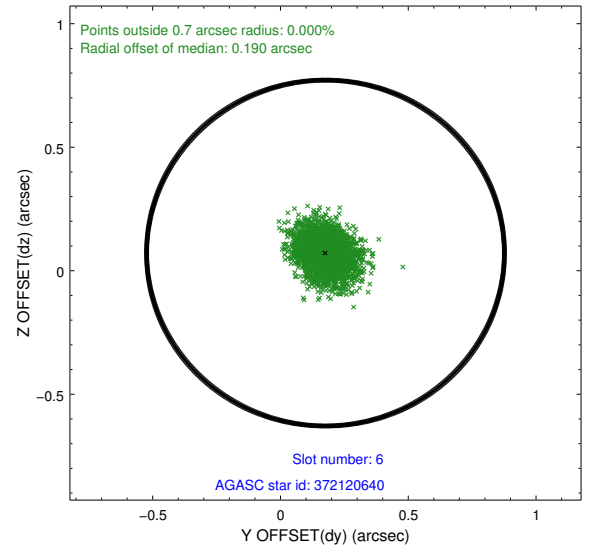
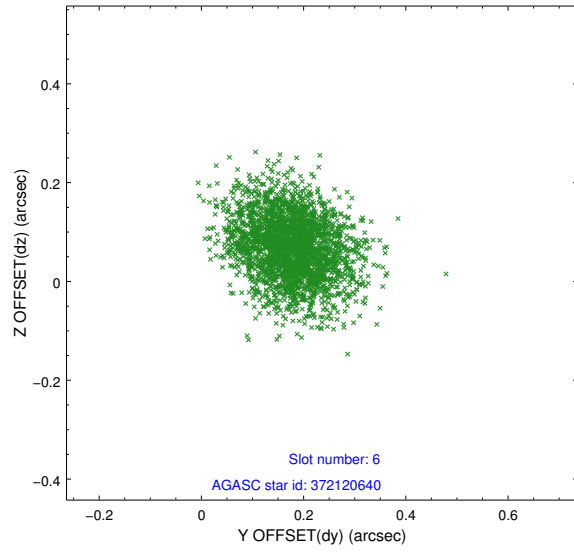
2.4.2 Slot 4



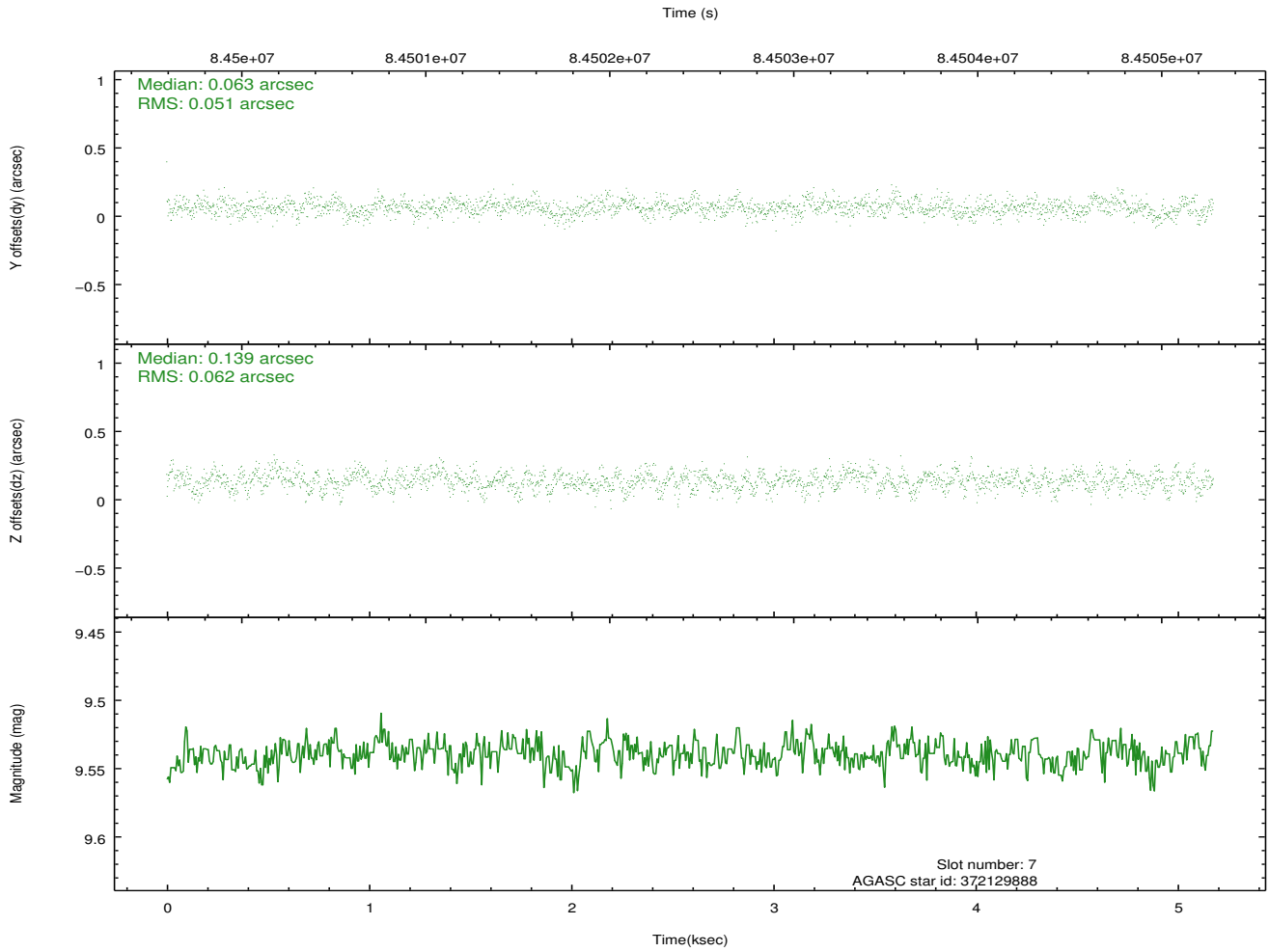
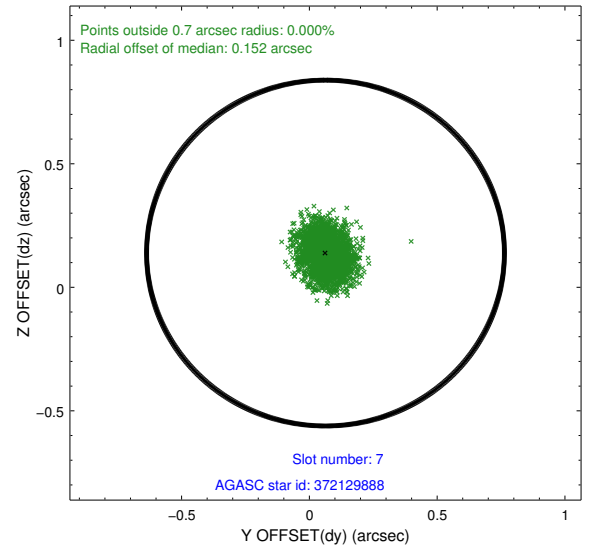
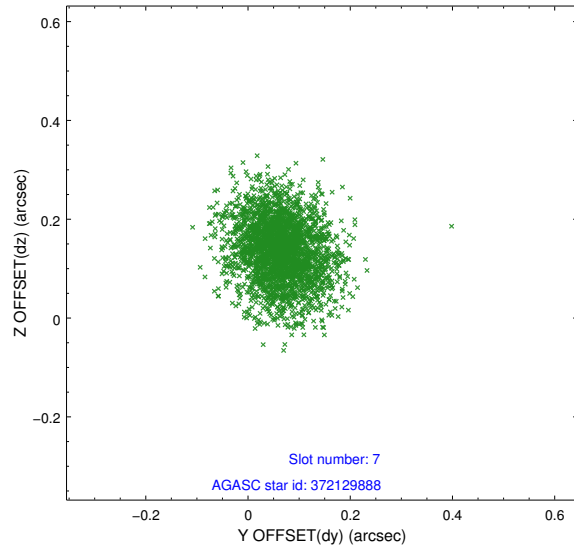
2.4.3 Slot 5



2.4.4 Slot 6

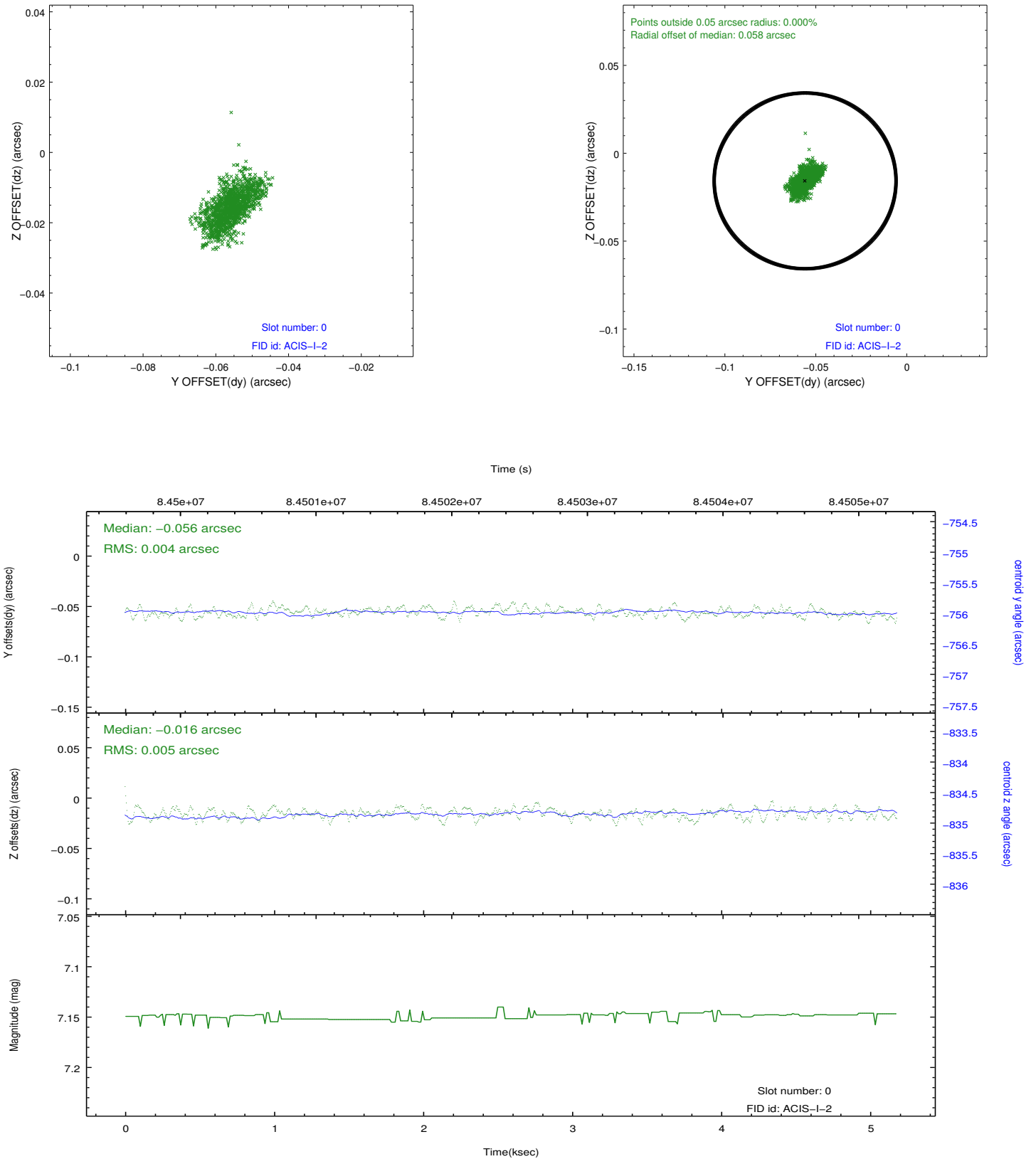


2.4.5 Slot 7

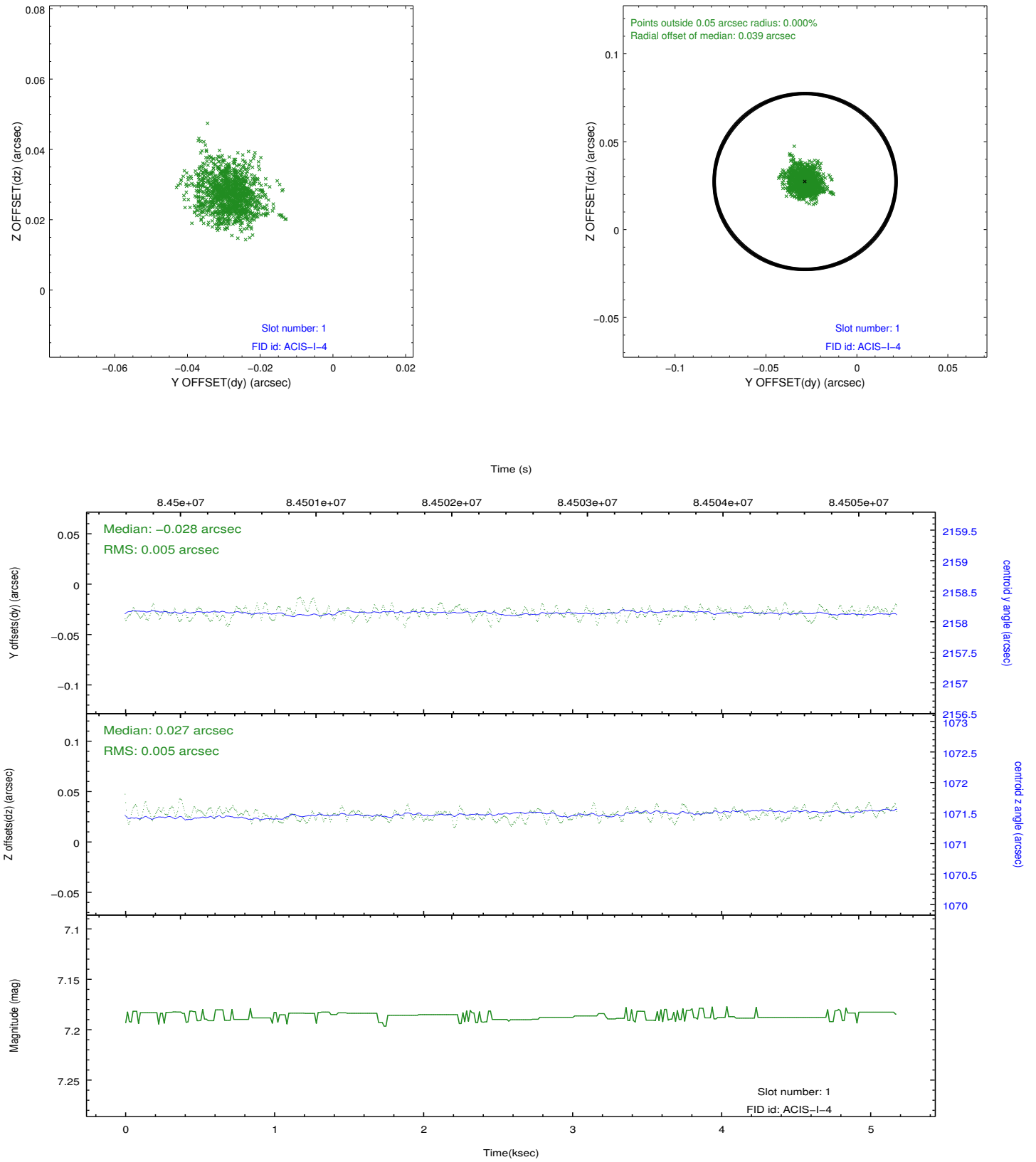


2.5 FID Slots

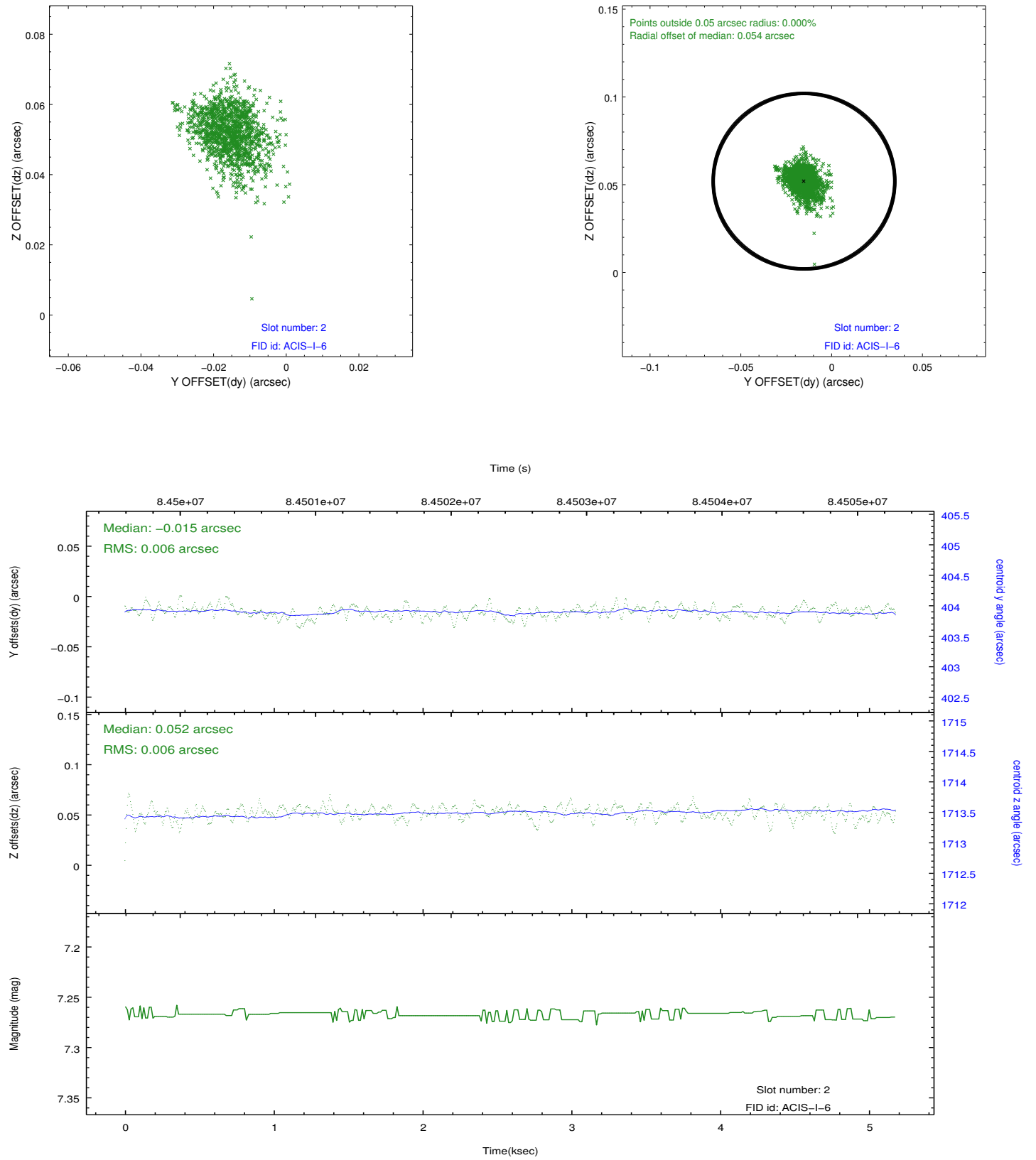
2.5.1 Slot 0



2.5.2 Slot 1



2.5.3 Slot 2



A Summary

A.1 Status

V&V Scientist	Jen Lauer
V&V Date (YYYY-MM-DD)	2012.09.07
V&V Edition	1
V&V Disposition and Status	OK
V&V Charge Time	4.454

A.2 Comments