

# V&V Reference Report

## L2 ASCDS Version : 7.6.10

Observation 933 - L2 Version 001  
Chandra X-Ray Center

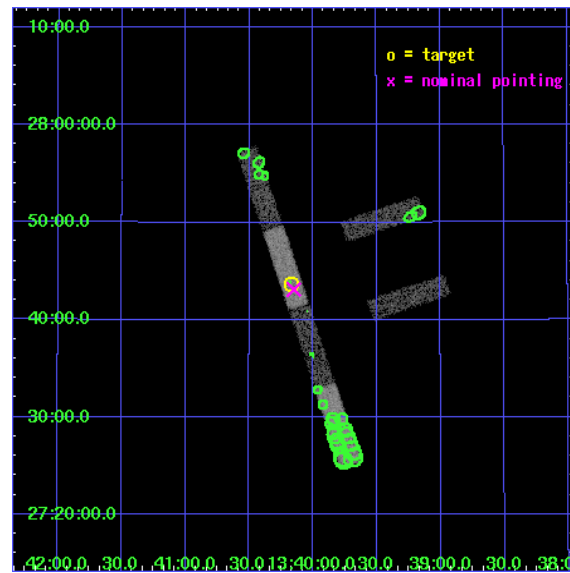
L2 Processing Date : May 30 2007

## Contents

<b>1</b>	<b>Front</b>	<b>2</b>
<b>2</b>	<b>OBI</b>	<b>3</b>
2.1	OBI . . . . .	3
2.1.1	Images . . . . .	3
2.1.2	Bias . . . . .	3
2.1.3	Parameters . . . . .	4
2.1.4	Events . . . . .	4
2.2	Compared Parameters . . . . .	5
2.3	Aspect . . . . .	6
2.4	Star Slots . . . . .	9
2.4.1	Slot 3 . . . . .	9
2.4.2	Slot 4 . . . . .	10
2.4.3	Slot 5 . . . . .	11
2.4.4	Slot 6 . . . . .	12
2.4.5	Slot 7 . . . . .	13
2.5	FID Slots . . . . .	14
2.5.1	Slot 0 . . . . .	14
2.5.2	Slot 1 . . . . .	15
2.5.3	Slot 2 . . . . .	16
<b>3</b>	<b>Point Sources</b>	<b>17</b>
<b>A</b>	<b>Summary</b>	<b>18</b>
A.1	Status . . . . .	18
A.2	Comments . . . . .	18

# 1 Front

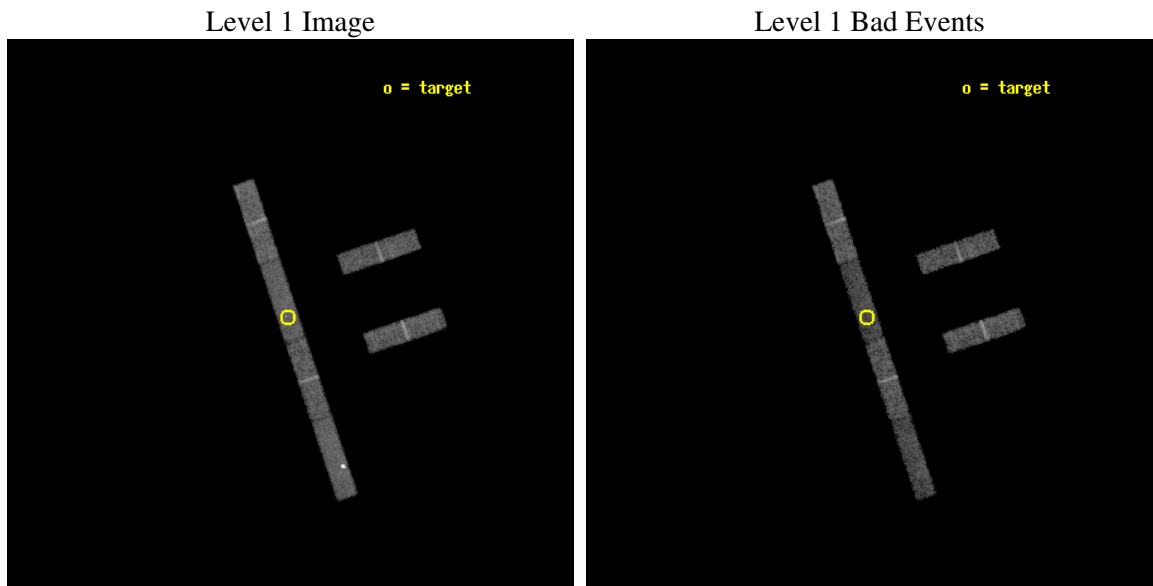
seq_num	900005
obs_id	933
title	BRIGHT `BLANK FIELD 'X-RAY SOURCES
observer	Dr. Martin Elvis
object	1WGA J1340.1+2743
dtcycle	0
cycle	P
ra_targ	205.042917
dec_targ	27.727472
ra_nom	205.03749435555
dec_nom	27.718799016085
roll_nom	251.43485735487
revision	3
ontime	10151.899944991
livetime	9786.7646528517
ontime2	10151.899944991
ontime3	10151.899944991
ontime5	10151.899944991
ontime6	10151.899944991
ontime7	10151.899944991
ontime8	10151.899944991
l2events	26432



## 2 OBI

### 2.1 OBI

#### 2.1.1 Images



#### 2.1.2 Bias

Chip 2

Chip 3

Chip 5



Chip 6

Chip 7

Chip 8



### 2.1.3 Parameters

obi_num	0
ascdsver	7.6.10
caldsver	3.4.0
date	2007-05-30T18:17:21
revision	3

sched_exp_time	10000.000000
ontime	10151.899944991
ontime2	10151.899944991
ontime3	10151.899944991
ontime5	10151.899944991
ontime6	10151.899944991
ontime7	10151.899944991
ontime8	10151.899944991
l1events	145545

### 2.1.4 Events

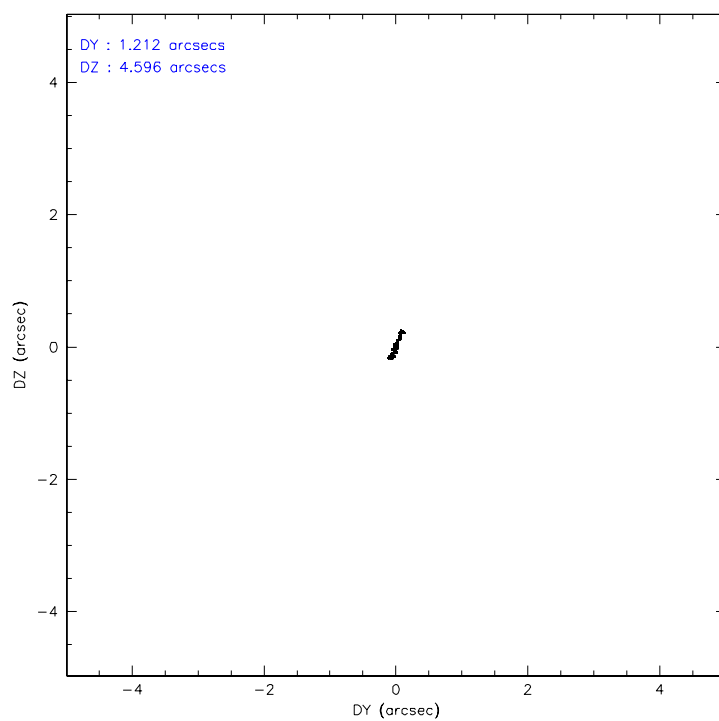
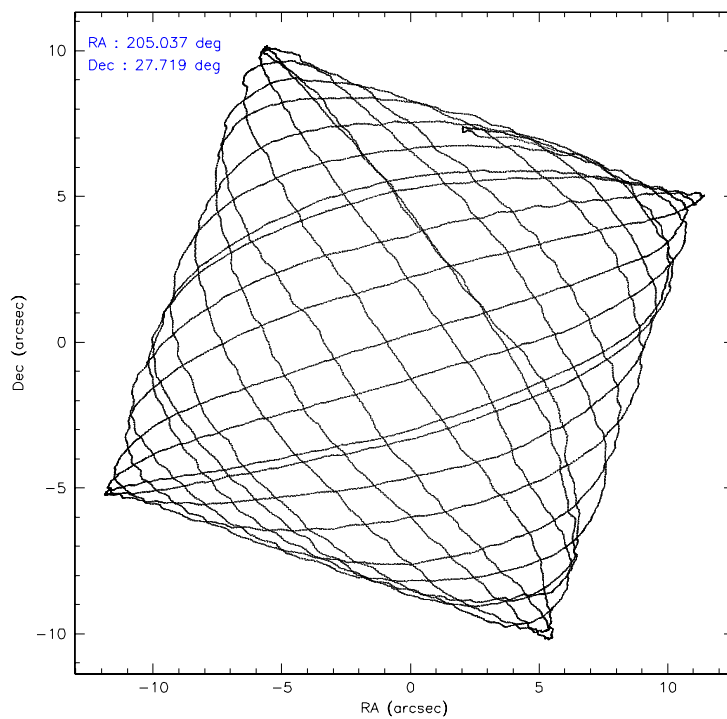
	ccd 2	ccd 3	ccd 5	ccd 6	ccd 7	ccd 8
level 1 events	22467	20546	31771	21386	21978	27397
rejected events	20317	18415	12915	19191	12471	22642
rejected %	90%	89%	40%	89%	56%	82%

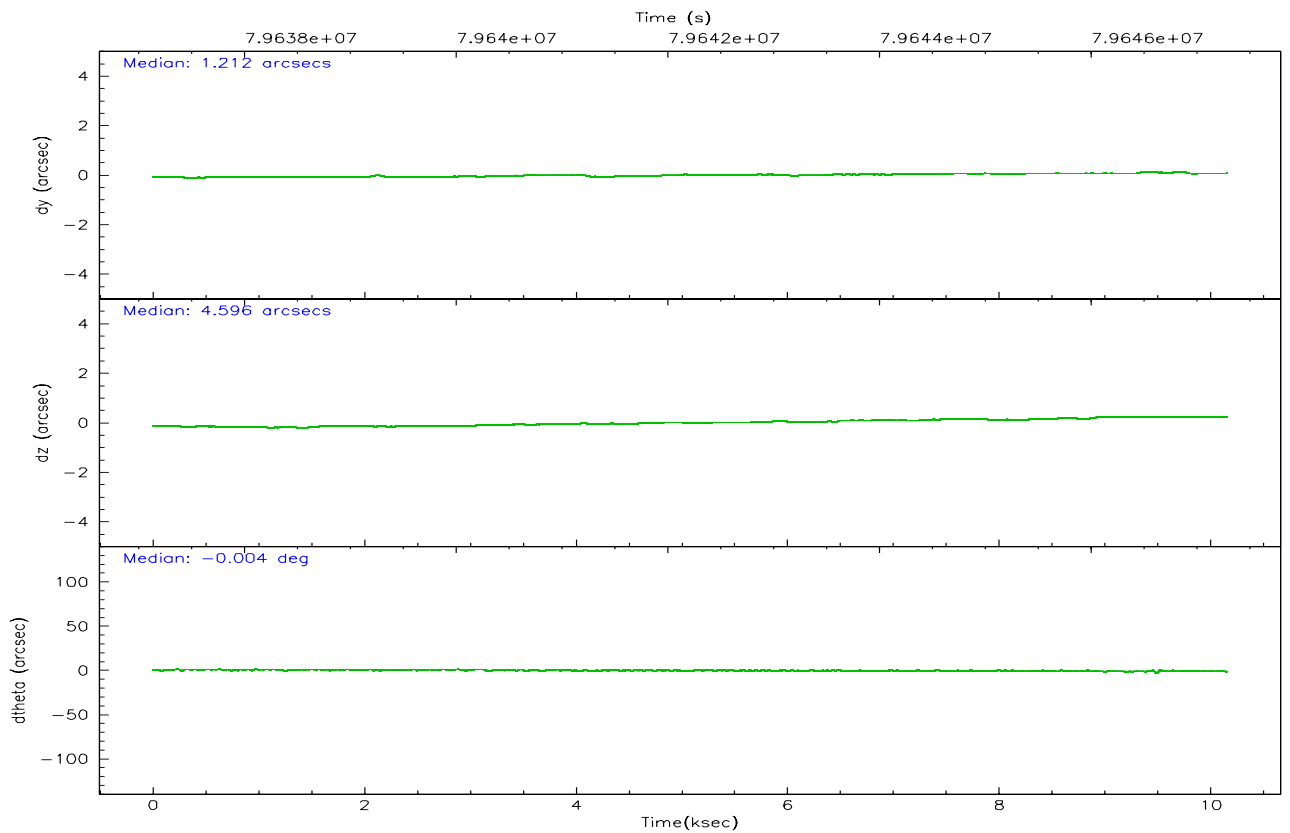
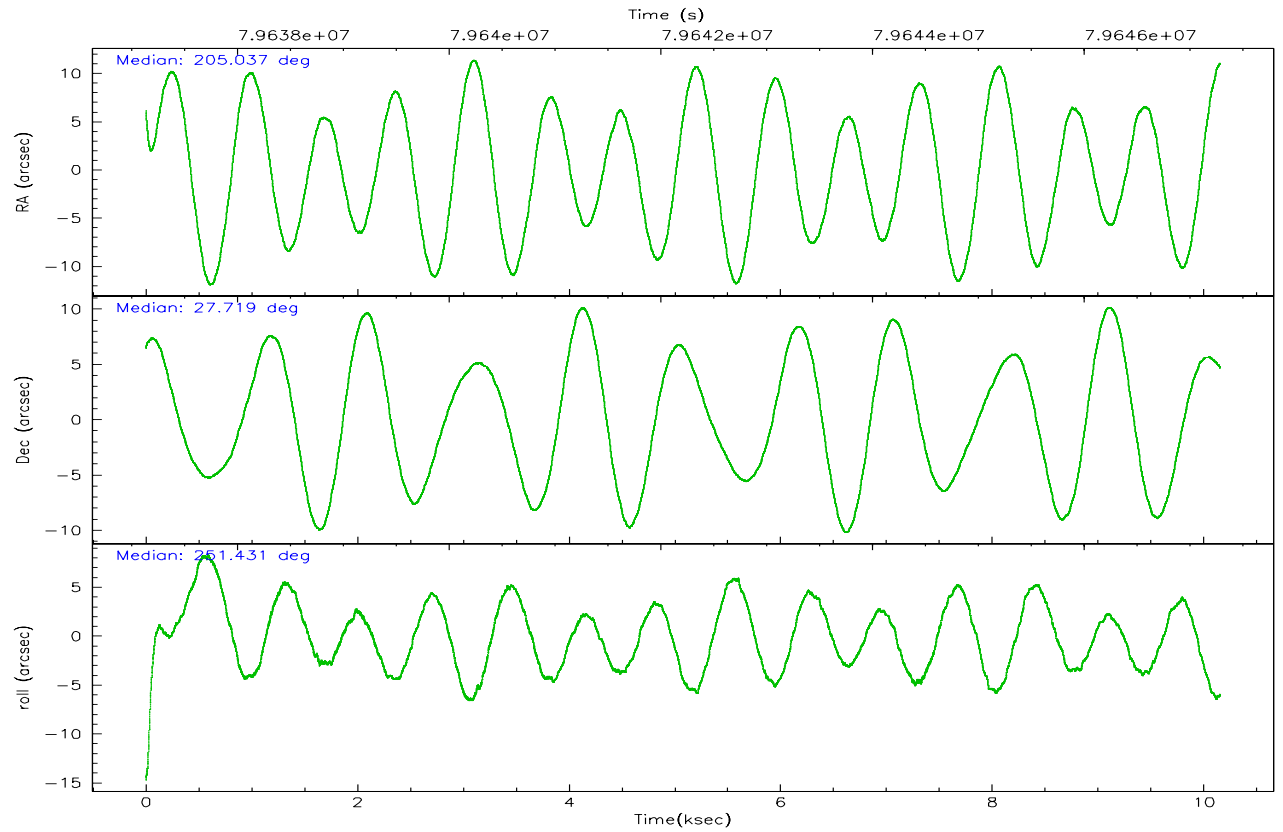
	ccd 2	ccd 3	ccd 5	ccd 6	ccd 7	ccd 8
grade 0 events	850	892	9811	873	1233	1489
	3%	4%	30%	4%	5%	5%
grade 1 events	7	5	45	5	26	8
	0%	0%	0%	0%	0%	0%
grade 2 events	418	377	3151	402	2006	952
	1%	1%	9%	1%	9%	3%
grade 3 events	294	332	699	322	1068	619
	1%	1%	2%	1%	4%	2%
grade 4 events	301	326	749	284	1001	547
	1%	1%	2%	1%	4%	1%
grade 5 events	513	549	1870	655	2031	781
	2%	2%	5%	3%	9%	2%
grade 6 events	365	336	5292	406	4619	1357
	1%	1%	16%	1%	21%	4%
grade 7 events	19719	17729	10154	18439	9994	21644
	87%	86%	31%	86%	45%	79%

## 2.2 Compared Parameters

Parameter	Planned	Actual	Parameter	Planned	Actual
Instrument	ACIS	ACIS	Obspar format version number	6	6
Detector	ACIS-235678	ACIS-235678	Obspar file type	PREDICTED	ACTUAL
Grating	NONE	NONE	Obspar update status	NONE	UPDATED
Data mode	VFAINT	VFAINT	Number of optional ACIS chips dropped	0	0
Observation mode	POINTING	POINTING	On-chip summing requested	N	N
Pointing RA	205.031173	205.0374943555524	Subarray requested	1/4	1/4
Pointing Dec	27.745603	27.71879901608538	Subarray start row	384	385
Pointing Roll	251.281188	251.4348573548749	Subarray row count	256	256
SIM focus pos (mm)	-0.684267	-0.6828225247311905	Alternating exposures requested	N	N
SIM defocus (mm)	0	0.001444936568705701	Primary exposure time	0.000000	1.1
SIM translation stage pos (mm)	-190.132523	-190.1400660498719			
SIM translation stage offset (mm)	0	0.00754346686406393			
Observation start time	79637290.184000	79636308.120684			
Observation start date	2000-07-10T17:27:06	2000-07-10T17:11:48			
Observation end time	79647290.184000	79647887.546111			
Observation end date	2000-07-10T20:13:46	2000-07-10T20:24:47			
Read mode	TIMED	TIMED			

## 2.3 Aspect





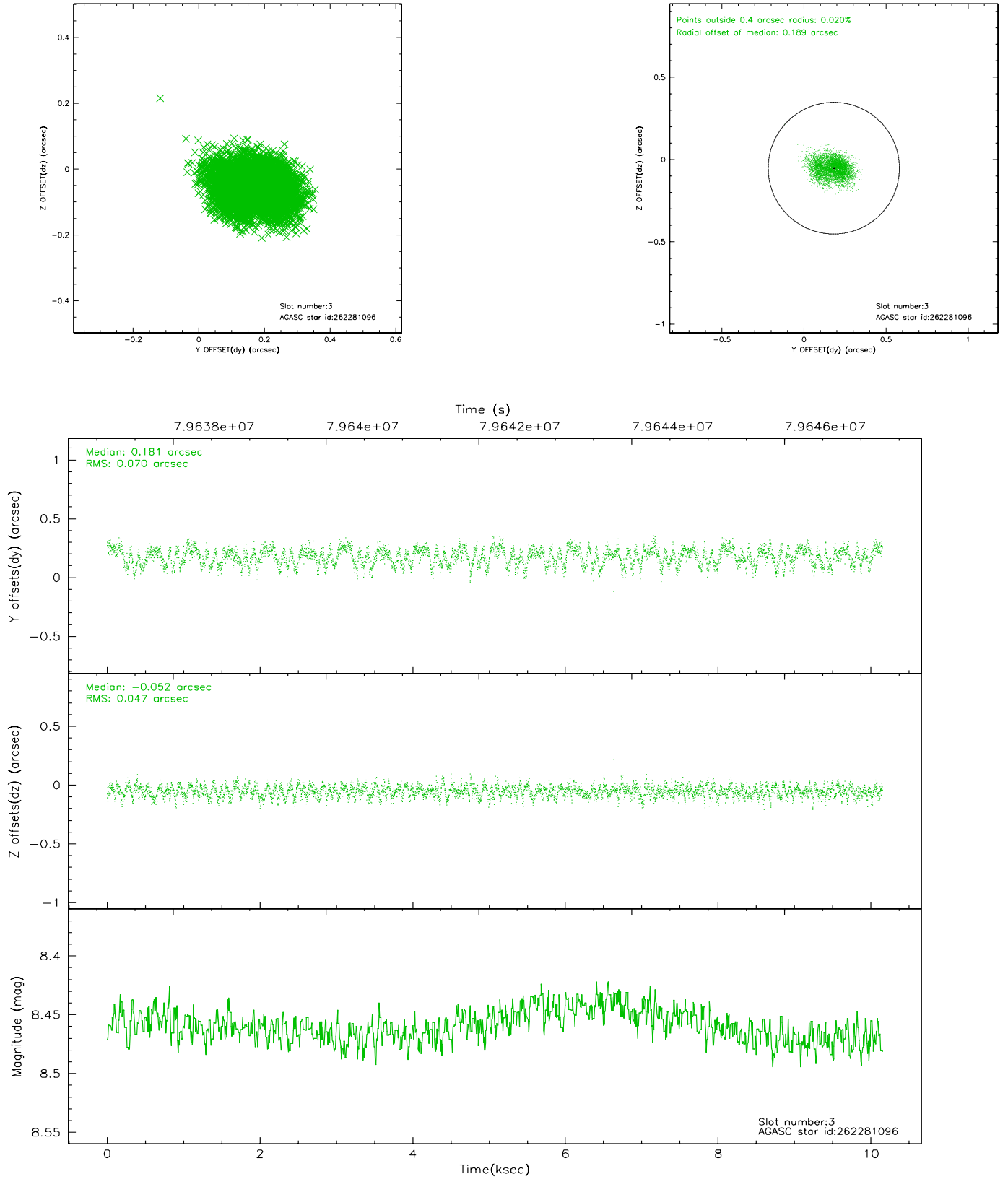
### Slot Statistics

slot	status	id	mag	n_pts	med_dy	med_dz	dr1	dr2	ra	dec	mean_y	mean_z
0	FID	ACIS-S-2	7.11	2476	-0.015	0.020	0.007	0.011	0.000000	0.000000	-753.82	-1725.69
1	FID	ACIS-S-4	7.21	2476	-0.053	0.002	0.005	0.009	0.000000	0.000000	2159.19	182.24
2	FID	ACIS-S-5	7.24	2477	0.037	-0.013	0.007	0.012	0.000000	0.000000	-1805.94	176.49
3	GUIDE	262281096	8.46	4954	0.181	-0.052	0.091	0.143	204.589131	27.287099	2015.10	-810.28
4	GUIDE	262679552	8.58	4954	-0.091	0.011	0.074	0.119	205.617019	28.202388	-2157.87	1231.15
5	GUIDE	262675088	9.42	4953	-0.104	-0.056	0.077	0.124	204.972671	28.348526	-1996.69	-871.90
6	GUIDE	262676040	9.16	4951	-0.032	0.076	0.072	0.125	205.599968	27.875331	-1027.68	1563.13
7	GUIDE	262276160	9.57	4951	0.048	0.022	0.105	0.170	205.646793	27.271277	980.19	2412.76

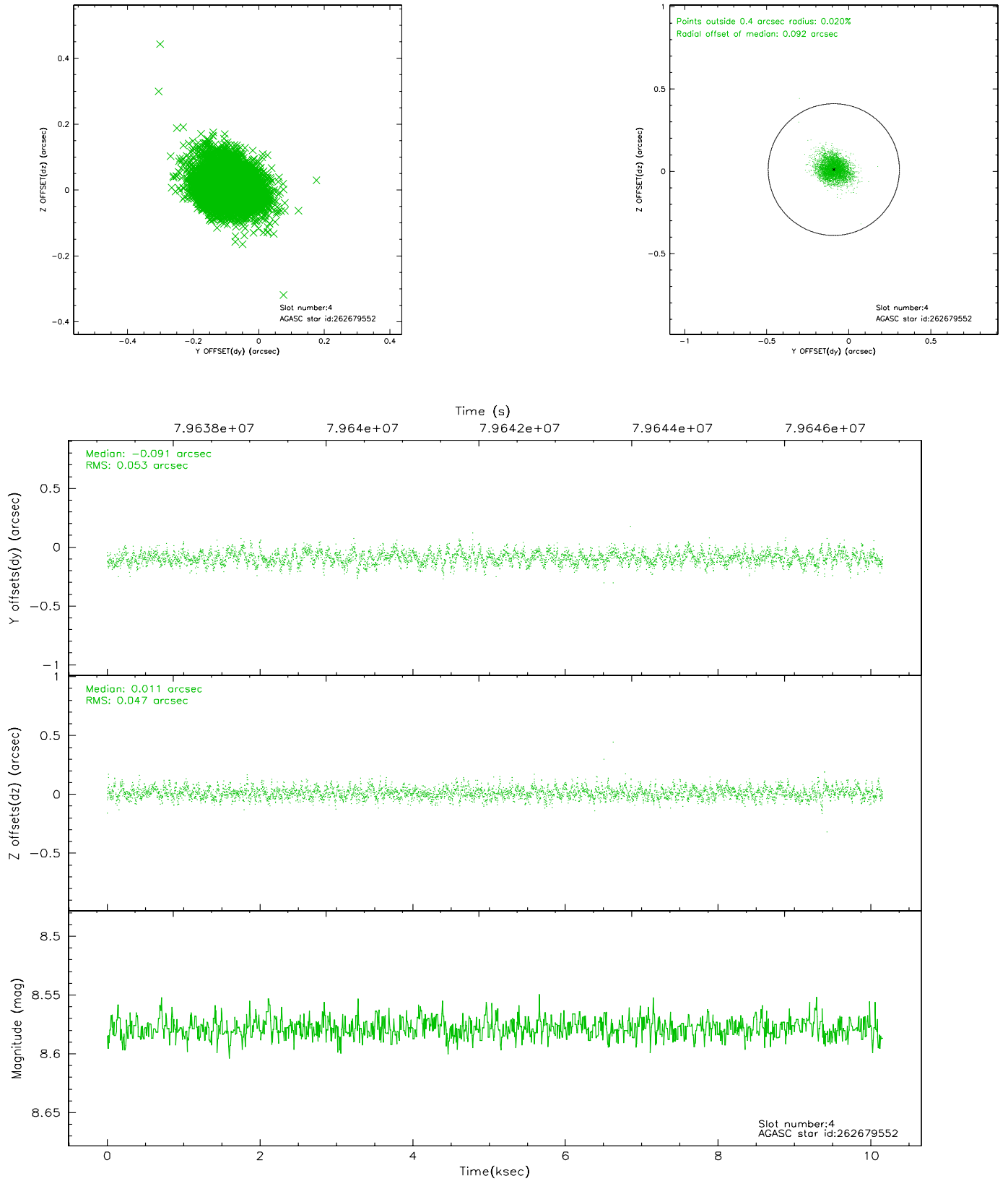


## 2.4 Star Slots

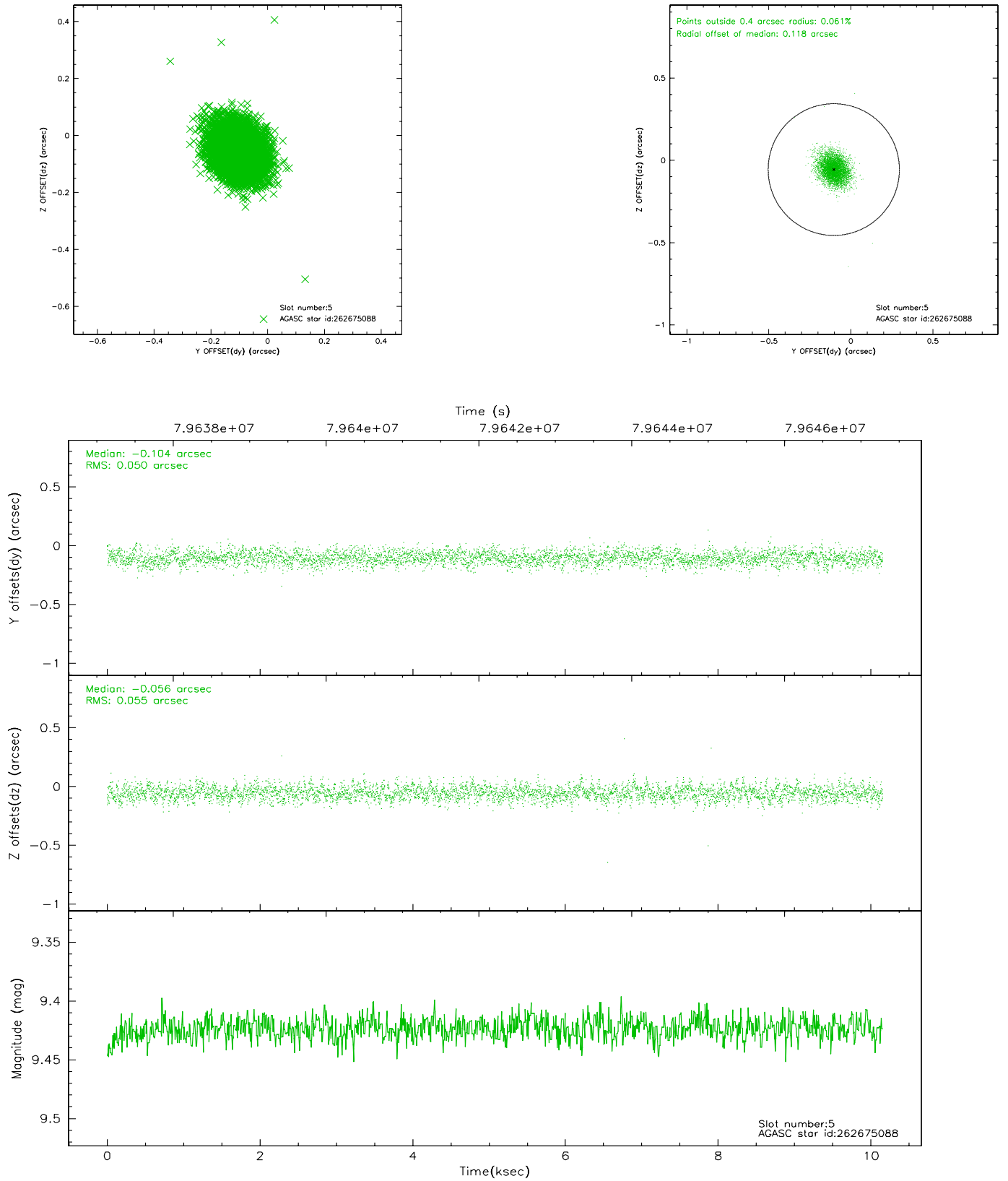
### 2.4.1 Slot 3



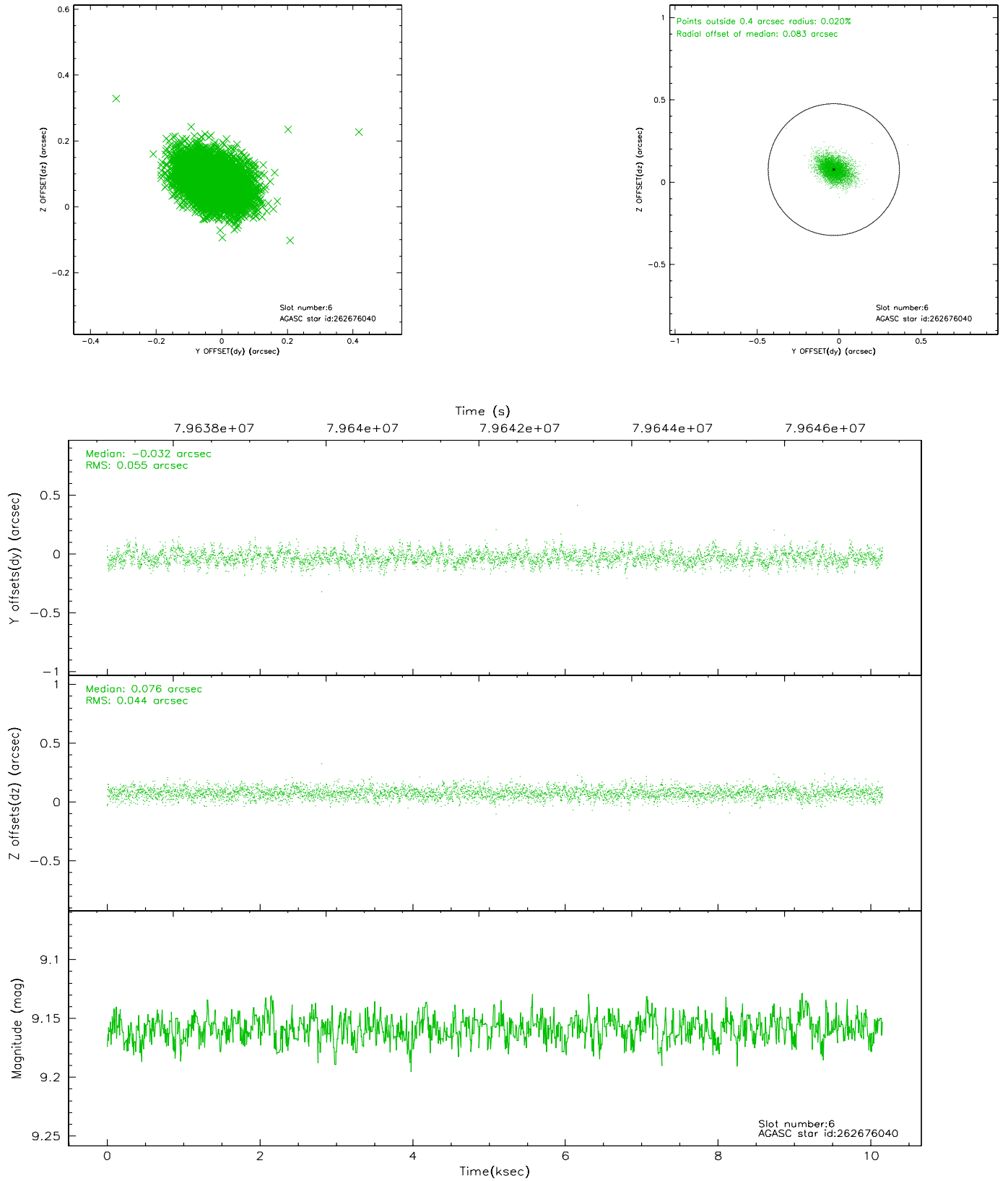
## 2.4.2 Slot 4



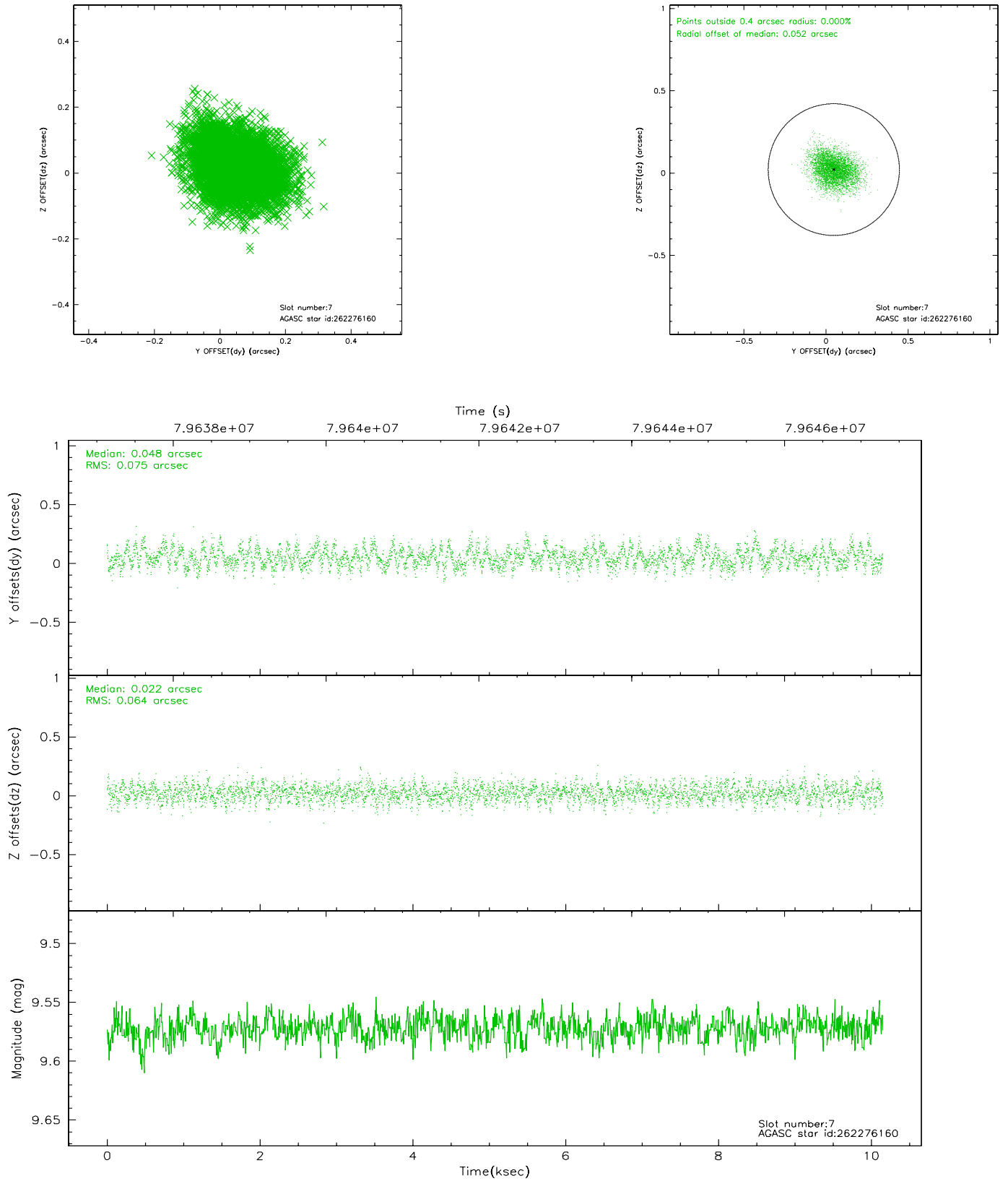
### 2.4.3 Slot 5



## 2.4.4 Slot 6

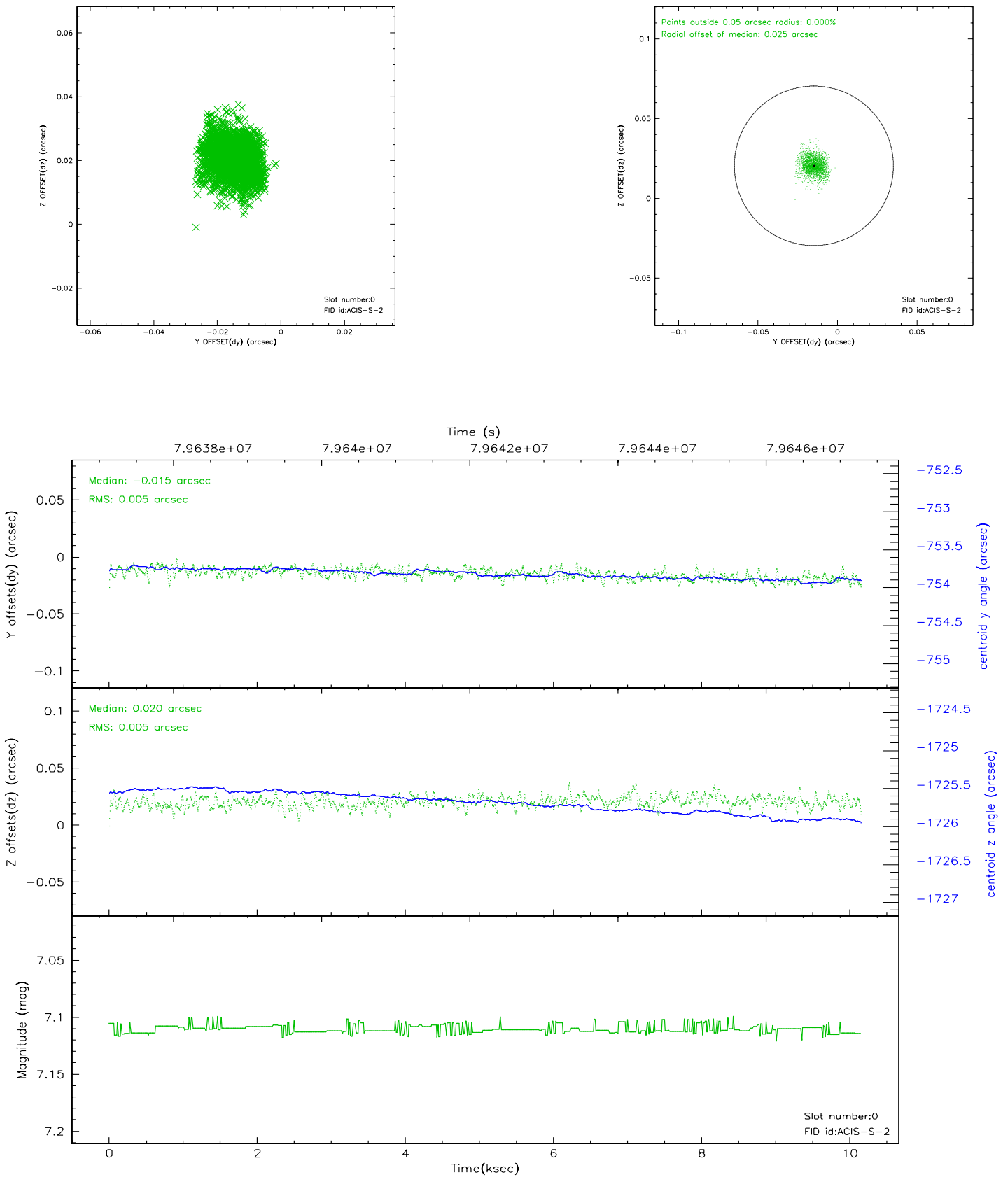


## 2.4.5 Slot 7

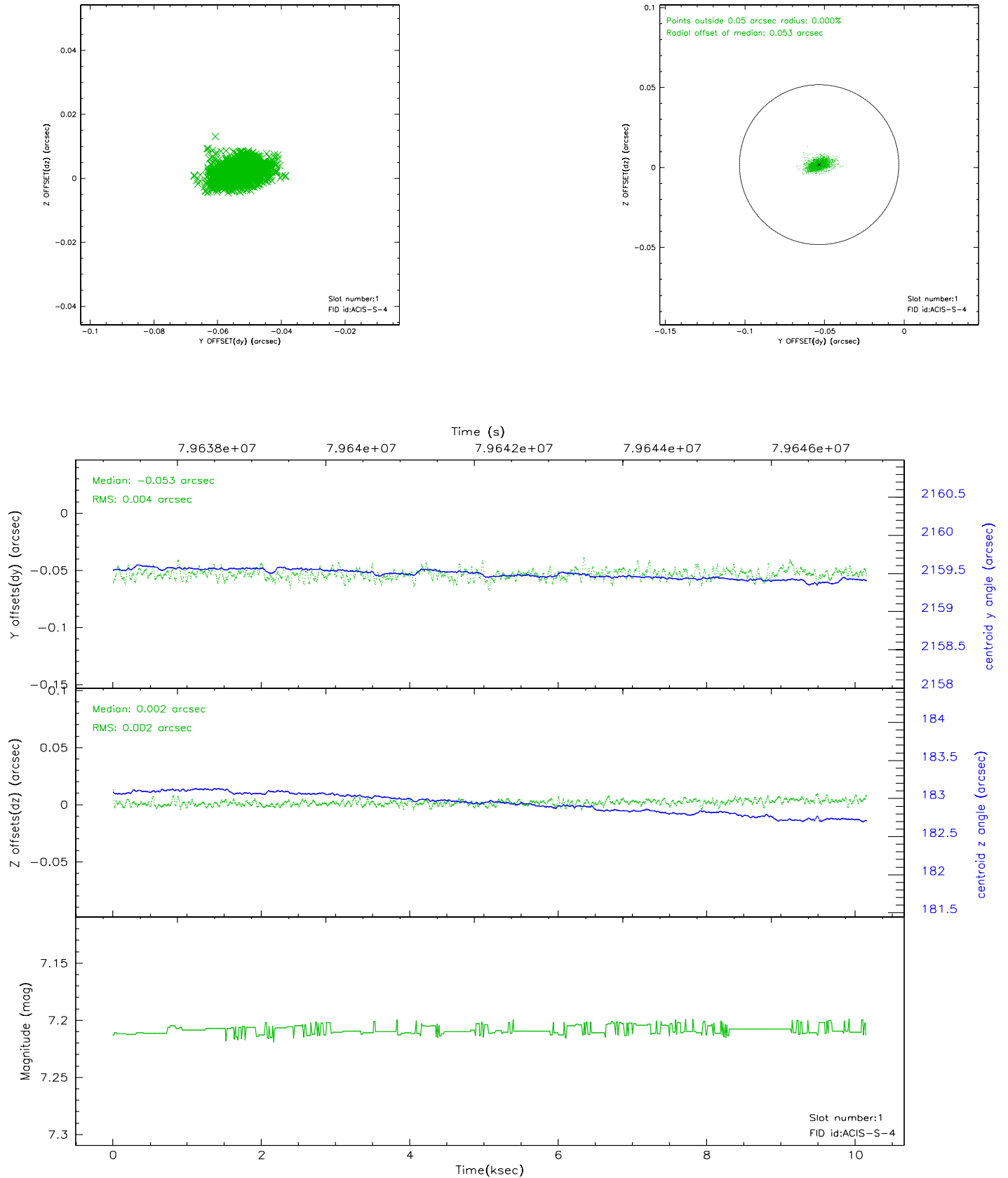


## 2.5 FID Slots

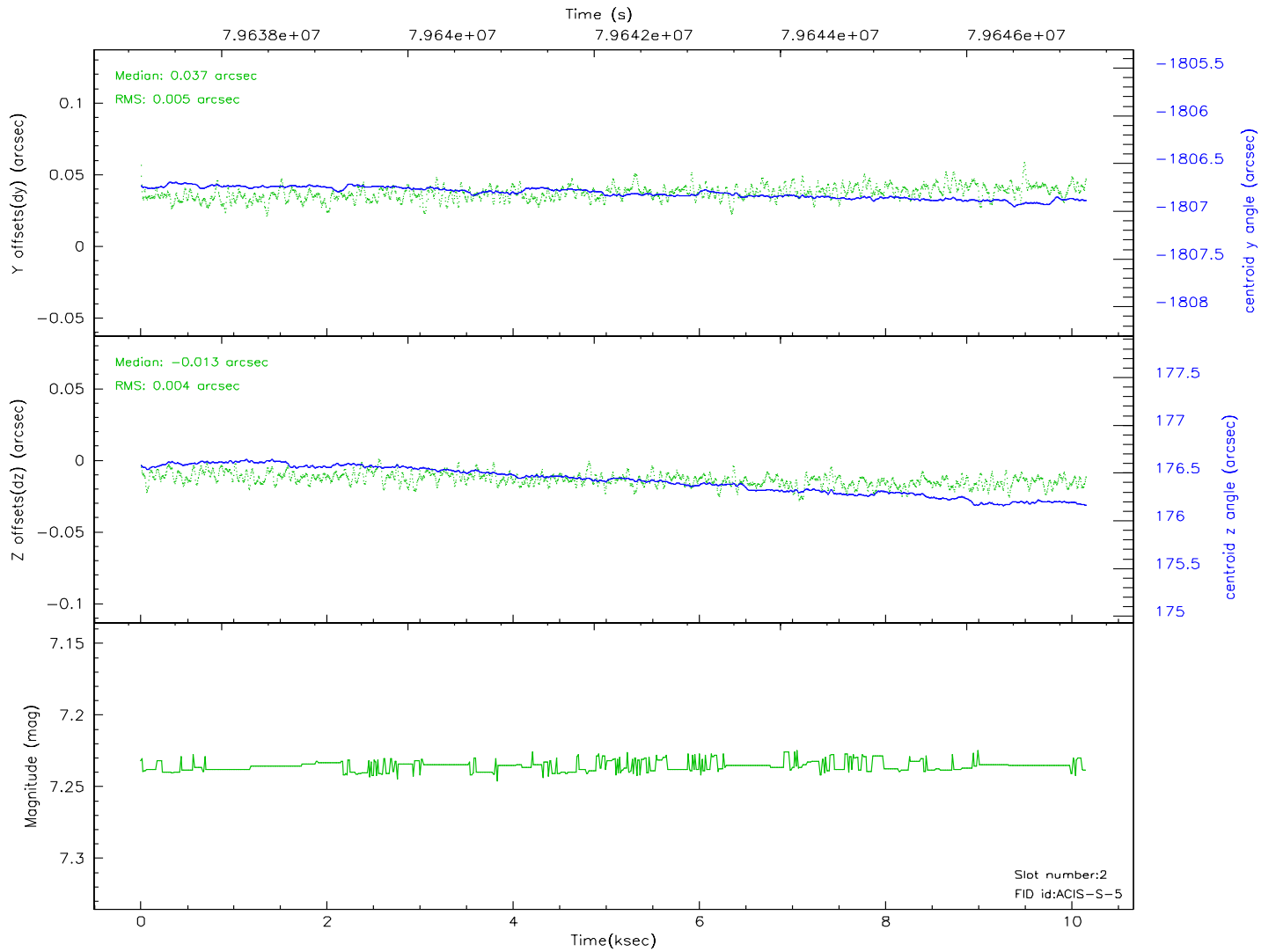
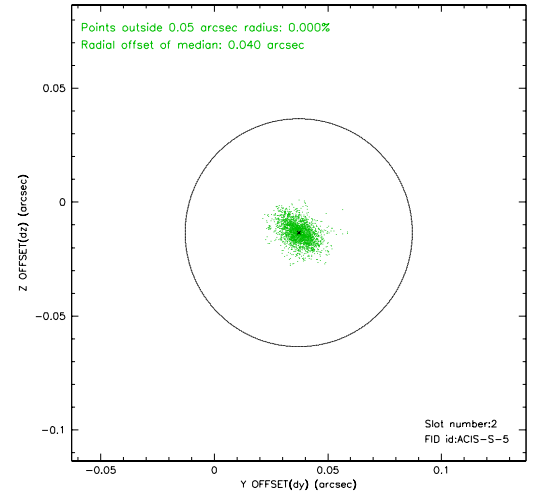
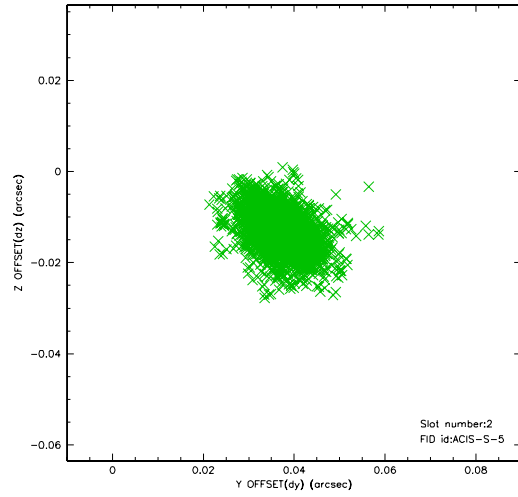
### 2.5.1 Slot 0



## 2.5.2 Slot 1

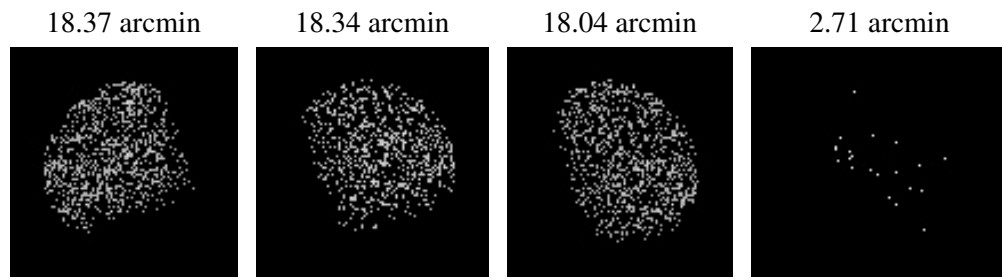


### 2.5.3 Slot 2





### 3 Point Sources



## A Summary

### A.1 Status

V&V Scientist	Beth Sundheim
V&V Date (YYYY-MM-DD)	2007.05.31
V&V Edition	1
V&V Disposition and Status	OK
V&V Charge Time	10.152

### A.2 Comments