

V&V Reference Report

L2 ASCDS Version : 7.6.10

Observation 929 - L2 Version 001
Chandra X-Ray Center

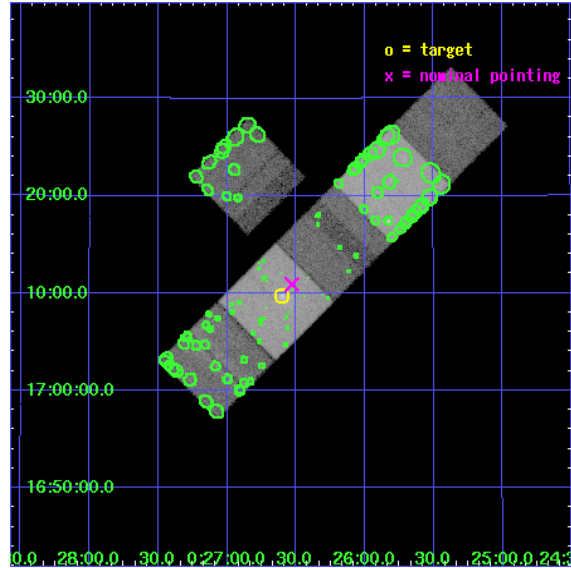
L2 Processing Date : Jun 6 2007

Contents

1	Front	2
2	OBI	3
2.1	OBI	3
2.1.1	Images	3
2.1.2	Bias	3
2.1.3	Parameters	4
2.1.4	Events	4
2.2	Compared Parameters	5
2.3	Aspect	6
2.4	Star Slots	9
2.4.1	Slot 3	9
2.4.2	Slot 4	10
2.4.3	Slot 5	11
2.4.4	Slot 6	12
2.4.5	Slot 7	13
2.5	FID Slots	14
2.5.1	Slot 0	14
2.5.2	Slot 1	15
2.5.3	Slot 2	16
3	Point Sources	17
A	Summary	18
A.1	Status	18
A.2	Comments	18

1 Front

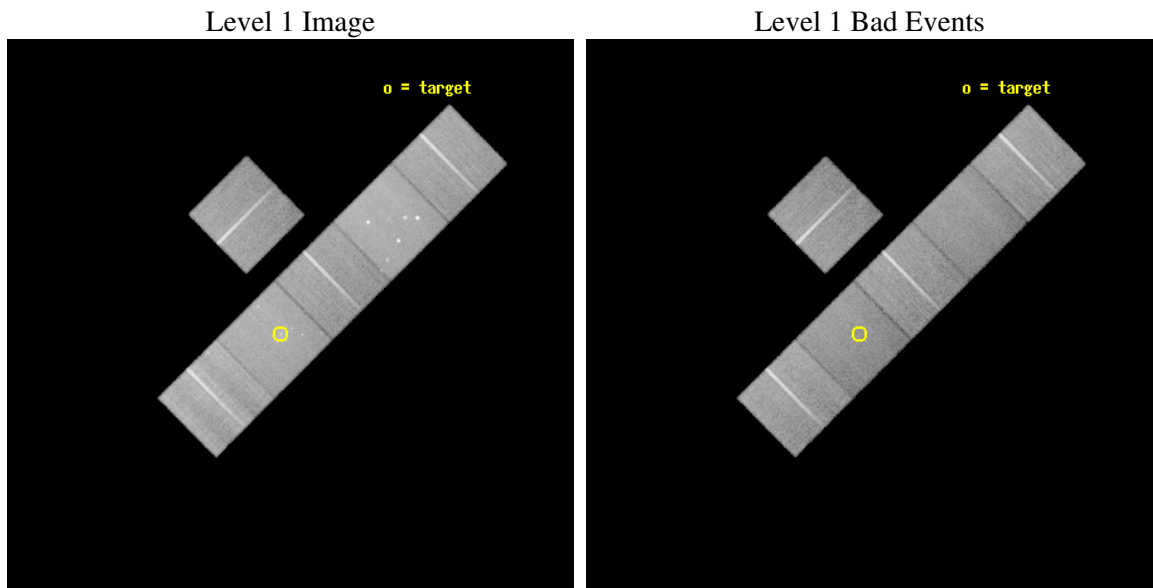
seq_num	800105
obs_id	929
title	SPATIALLY RESOLVED X-RAY SPECTROSCOPY OF THE BEST LENSING CLUSTER OF GALAXIES CL0024+17
observer	Dr. Makoto Hattori
object	CL 0024+17
dtcycle	0
cycle	P
ra_targ	6.650833
dec_targ	17.161944
ra_nom	6.6325862446393
dec_nom	17.181858124278
roll_nom	135.16201597689
revision	2
ontime	40448.00003767
livetime	39935.823106332
ontime2	40444.759077445
ontime4	40444.759077445
ontime5	40448.00003767
ontime6	40444.759077445
ontime7	40448.00003767
ontime8	40448.00003767
l2events	430148



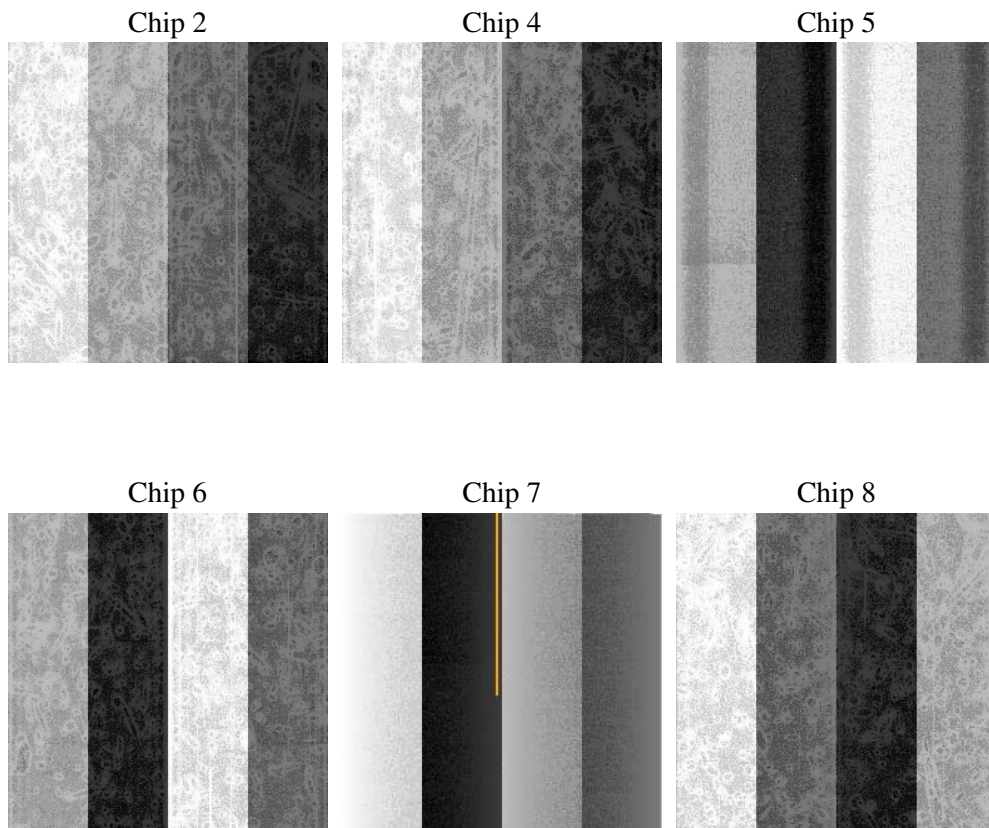
2 OBI

2.1 OBI

2.1.1 Images



2.1.2 Bias



2.1.3 Parameters

obi_num	0
ascdsver	7.6.10
caldsver	3.4.0
date	2007-06-06T20:06:10
revision	2

sched_exp_time	40500.000000
ontime	40448.00003767
ontime2	40444.759077445
ontime4	40444.759077445
ontime5	40448.00003767
ontime6	40444.759077445
ontime7	40448.00003767
ontime8	40448.00003767
l1events	1811853

2.1.4 Events

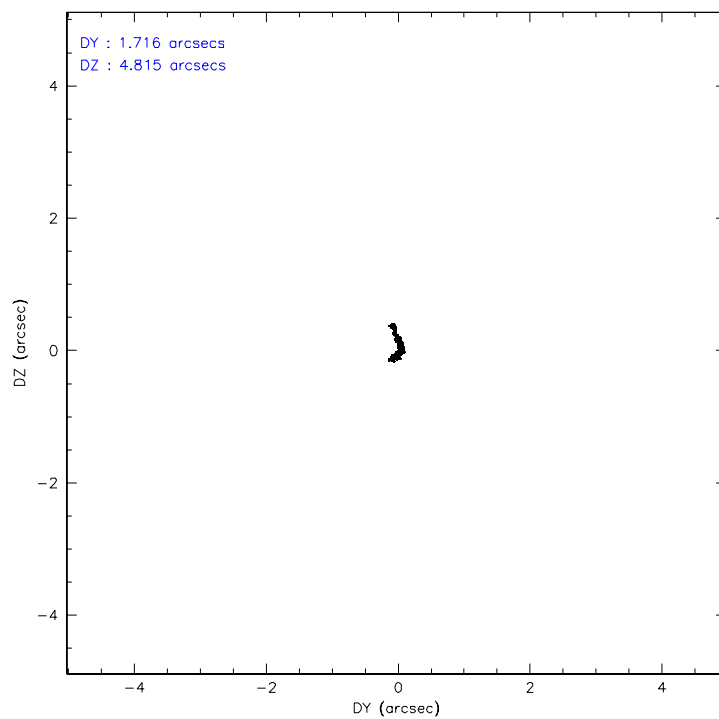
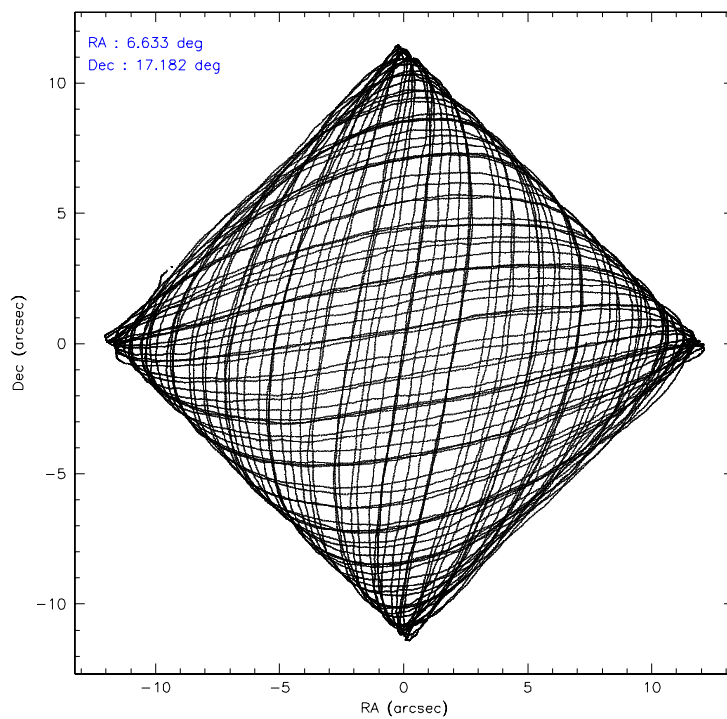
	ccd 2	ccd 4	ccd 5	ccd 6	ccd 7	ccd 8
level 1 events	252083	287621	344362	260169	312676	354942
rejected events	216108	245028	180495	220946	172972	251121
rejected %	85%	85%	52%	84%	55%	70%

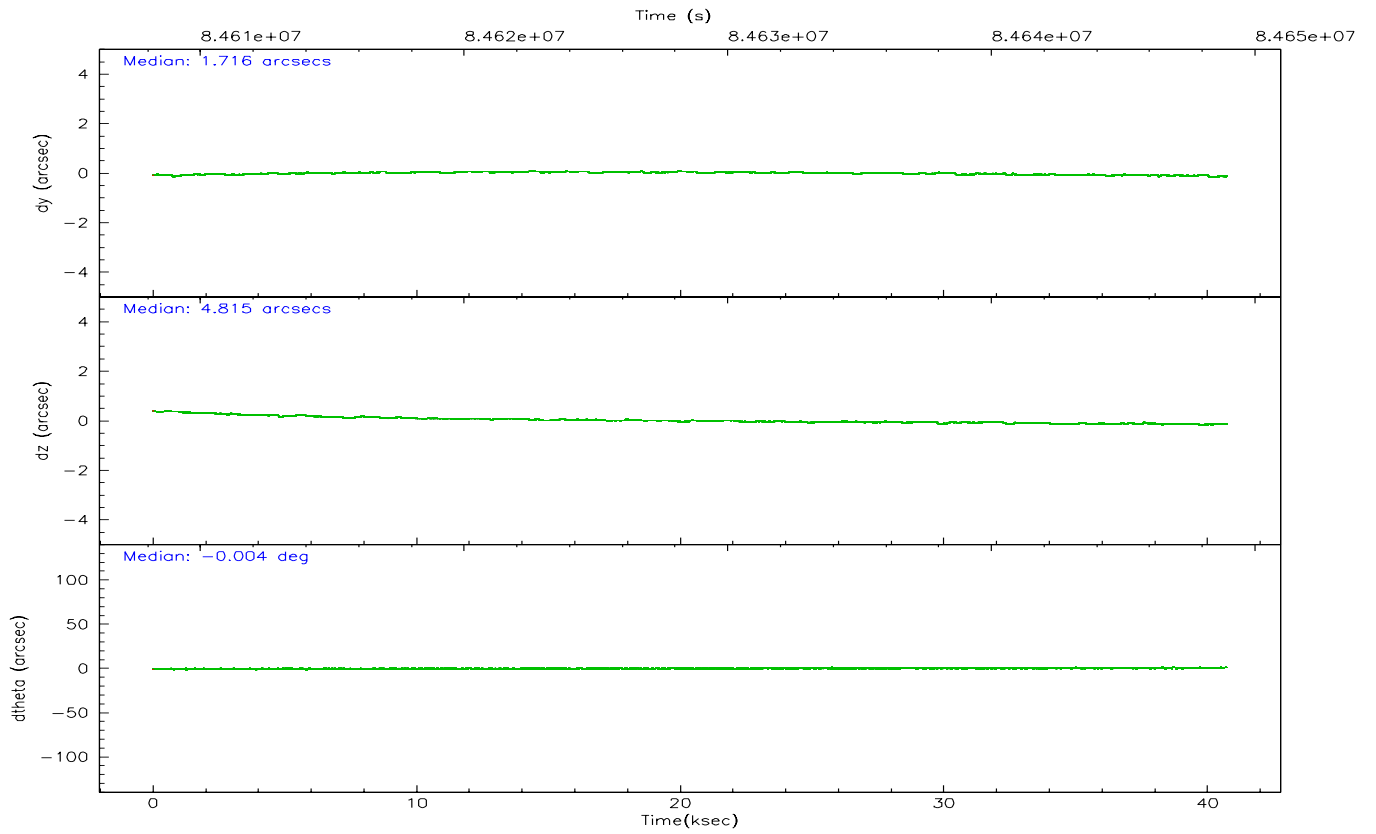
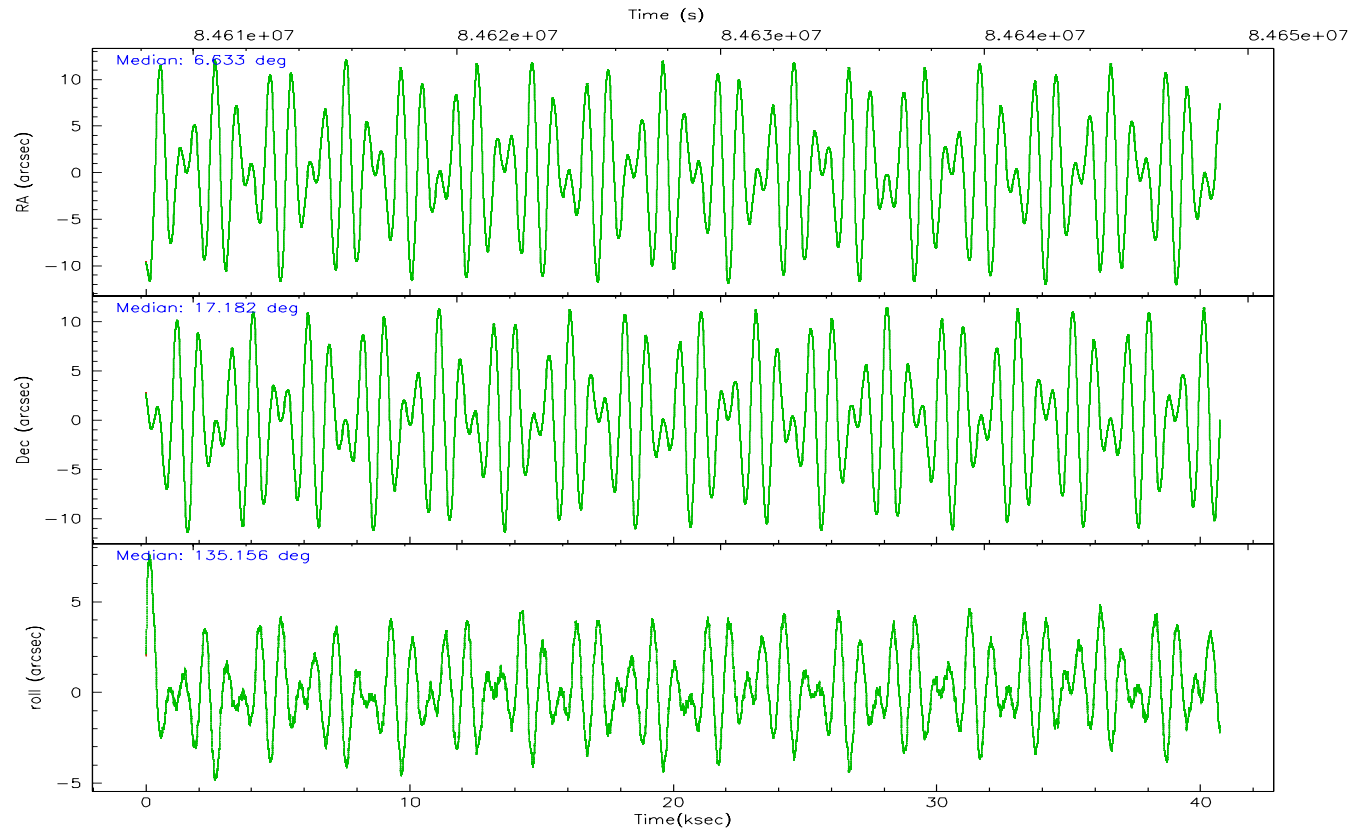
	ccd 2	ccd 4	ccd 5	ccd 6	ccd 7	ccd 8
grade 0 events	15116	17981	21933	16953	14926	39433
	5%	6%	6%	6%	4%	11%
grade 1 events	112	170	477	134	286	319
	0%	0%	0%	0%	0%	0%
grade 2 events	8636	11799	45816	9354	27980	19202
	3%	4%	13%	3%	8%	5%
grade 3 events	2676	2942	7903	2909	12804	13388
	1%	1%	2%	1%	4%	3%
grade 4 events	2956	2832	7498	2929	12667	11989
	1%	0%	2%	1%	4%	3%
grade 5 events	7808	8175	25681	9869	28827	12696
	3%	2%	7%	3%	9%	3%
grade 6 events	6598	7047	80743	7085	71358	19817
	2%	2%	23%	2%	22%	5%
grade 7 events	208181	236675	154311	210936	143828	238098
	82%	82%	44%	81%	45%	67%

2.2 Compared Parameters

Parameter	Planned	Actual	Parameter	Planned	Actual
Instrument	ACIS	ACIS	Obspar format version number	6	6
Detector	ACIS-245678	ACIS-245678	Obspar file type	PREDICTED	ACTUAL
Grating	NONE	NONE	Obspar update status	NONE	UPDATED
Data mode	FAINT	FAINT	Number of optional ACIS chips dropped	0	0
Observation mode	POINTING	POINTING	On-chip summing requested	N	N
Pointing RA	6.660330	6.632586244639255	Subarray requested	NONE	NONE
Pointing Dec	17.175024	17.18185812427763	Alternating exposures requested	N	N
Pointing Roll	134.997197	135.1620159768889	Primary exposure time	3.200000	3.2
SIM focus pos (mm)	-0.684267	-0.6828225247311905			
SIM defocus (mm)	0	0.001444936568705701			
SIM translation stage pos (mm)	-190.132523	-190.1425803651734			
SIM translation stage offset (mm)	0	0.01005778216563158			
Observation start time	84608447.184000	84607464.00613999			
Observation start date	2000-09-06T06:19:43	2000-09-06T06:04:24			
Observation end time	84648947.184000	84649793.43272901			
Observation end date	2000-09-06T17:34:43	2000-09-06T17:49:53			
Read mode	TIMED	TIMED			

2.3 Aspect



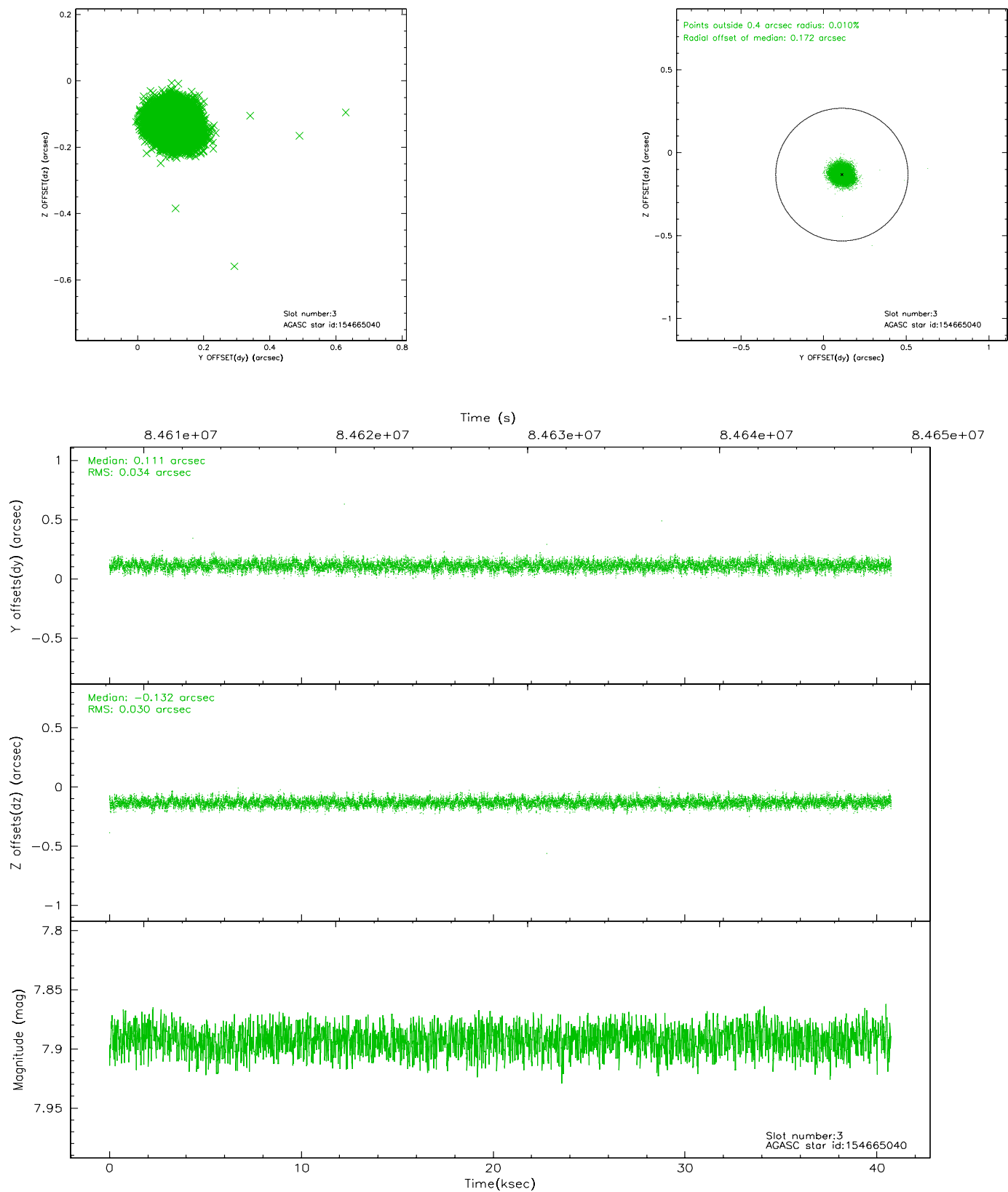


Slot Statistics

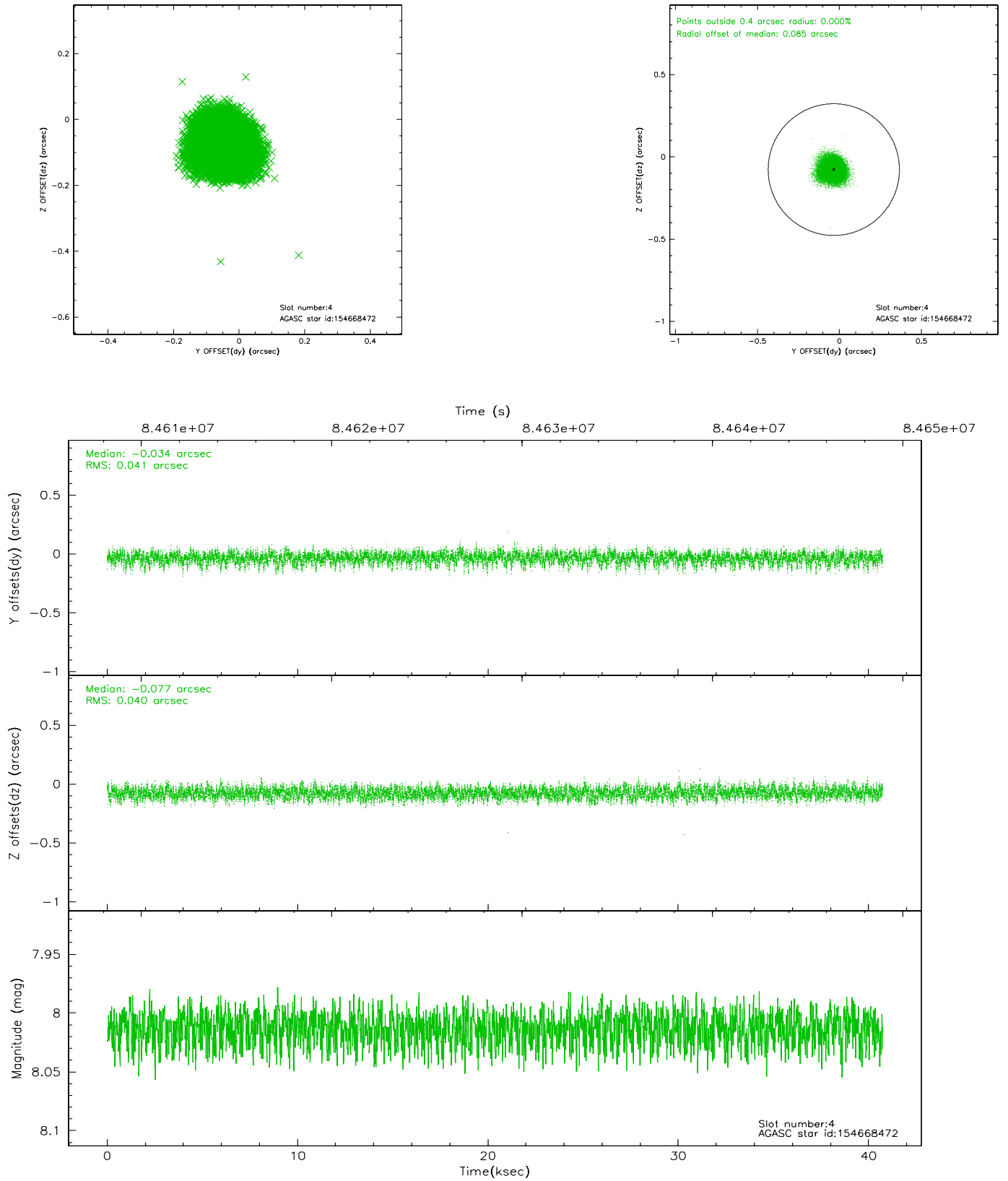
slot	status	id	mag	n_pts	med_dy	med_dz	dr1	dr2	ra	dec	mean_y	mean_z
0	FID	ACIS-S-2	7.11	9938	-0.021	0.019	0.007	0.011	0.000000	0.000000	-754.33	-1725.88
1	FID	ACIS-S-4	7.21	9937	-0.054	0.005	0.005	0.008	0.000000	0.000000	2158.90	182.59
2	FID	ACIS-S-5	7.24	9937	0.043	-0.015	0.007	0.012	0.000000	0.000000	-1807.10	176.23
3	GUIDE	154665040	7.89	19872	0.111	-0.132	0.048	0.077	7.031910	16.716005	-2072.95	261.76
4	GUIDE	154668472	8.01	19875	-0.034	-0.077	0.061	0.099	6.295897	16.991914	422.04	1352.99
5	GUIDE	154668976	8.83	19871	-0.020	-0.055	0.068	0.109	6.151479	16.979813	743.84	1734.81
6	GUIDE	155064272	8.83	19800	-0.058	0.110	0.073	0.118	6.749584	17.903503	1639.13	-2069.76
7	GUIDE	154666064	9.37	19868	0.002	0.157	0.084	0.133	7.584121	17.247387	-2055.43	-2435.21

2.4 Star Slots

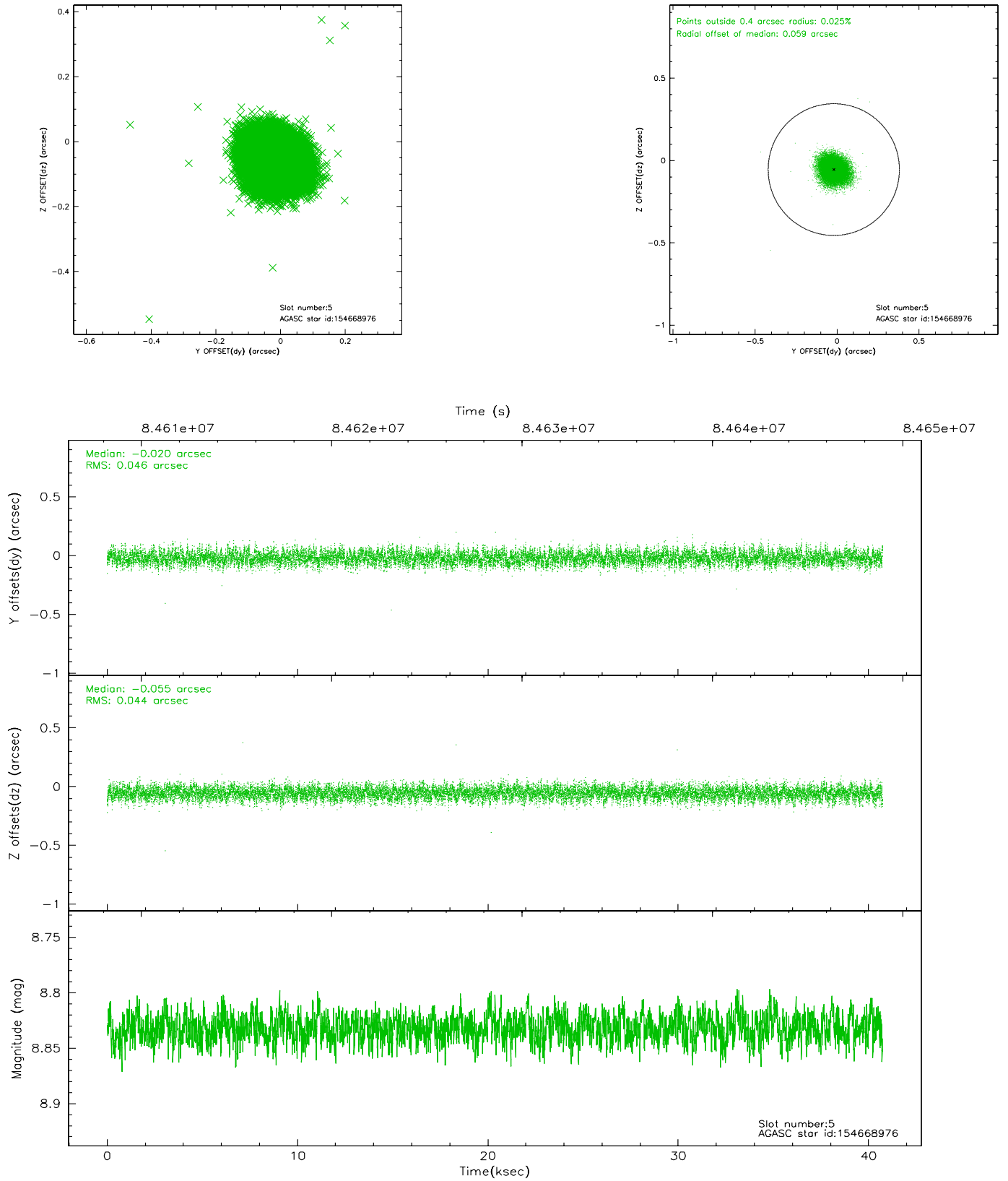
2.4.1 Slot 3



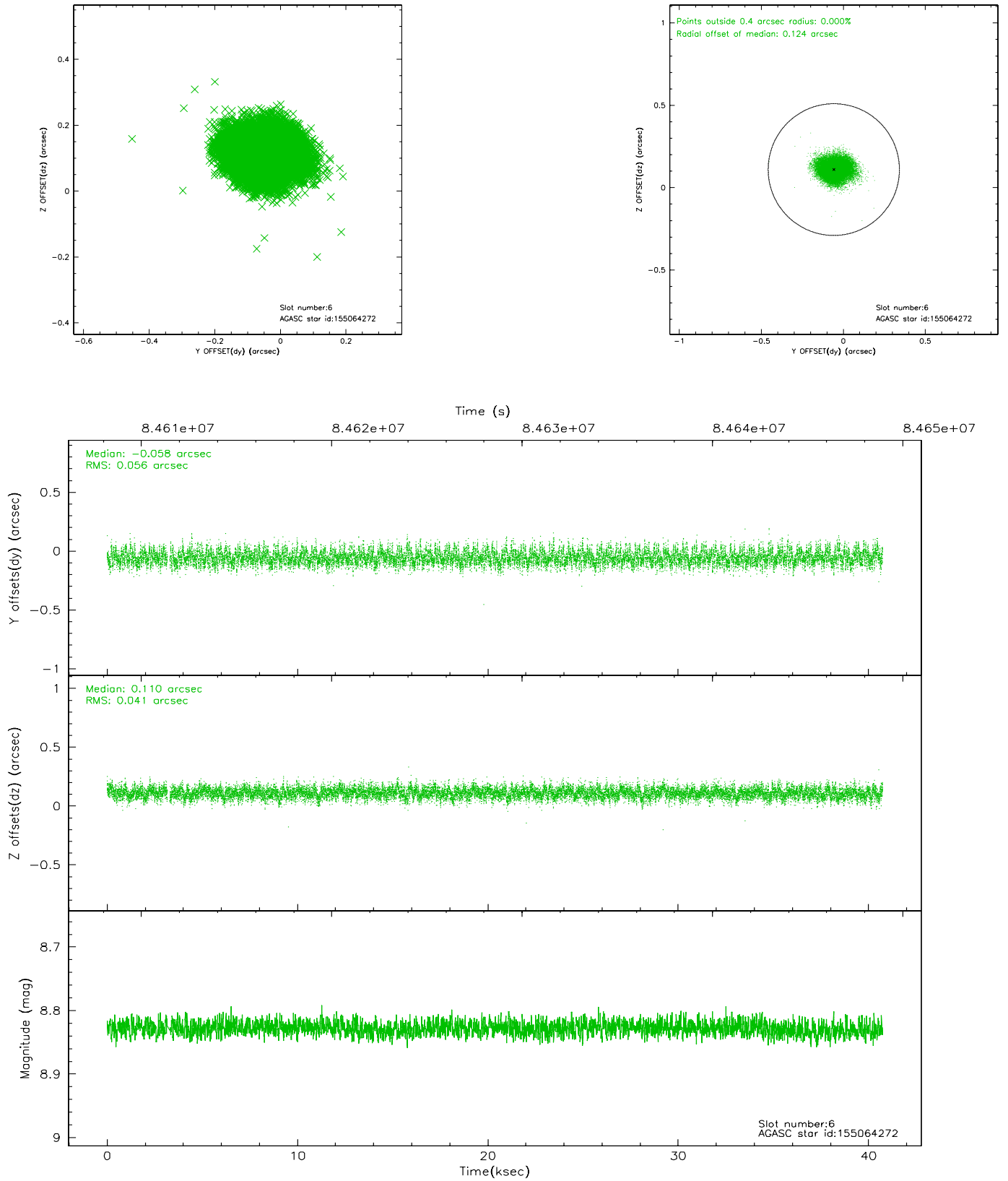
2.4.2 Slot 4



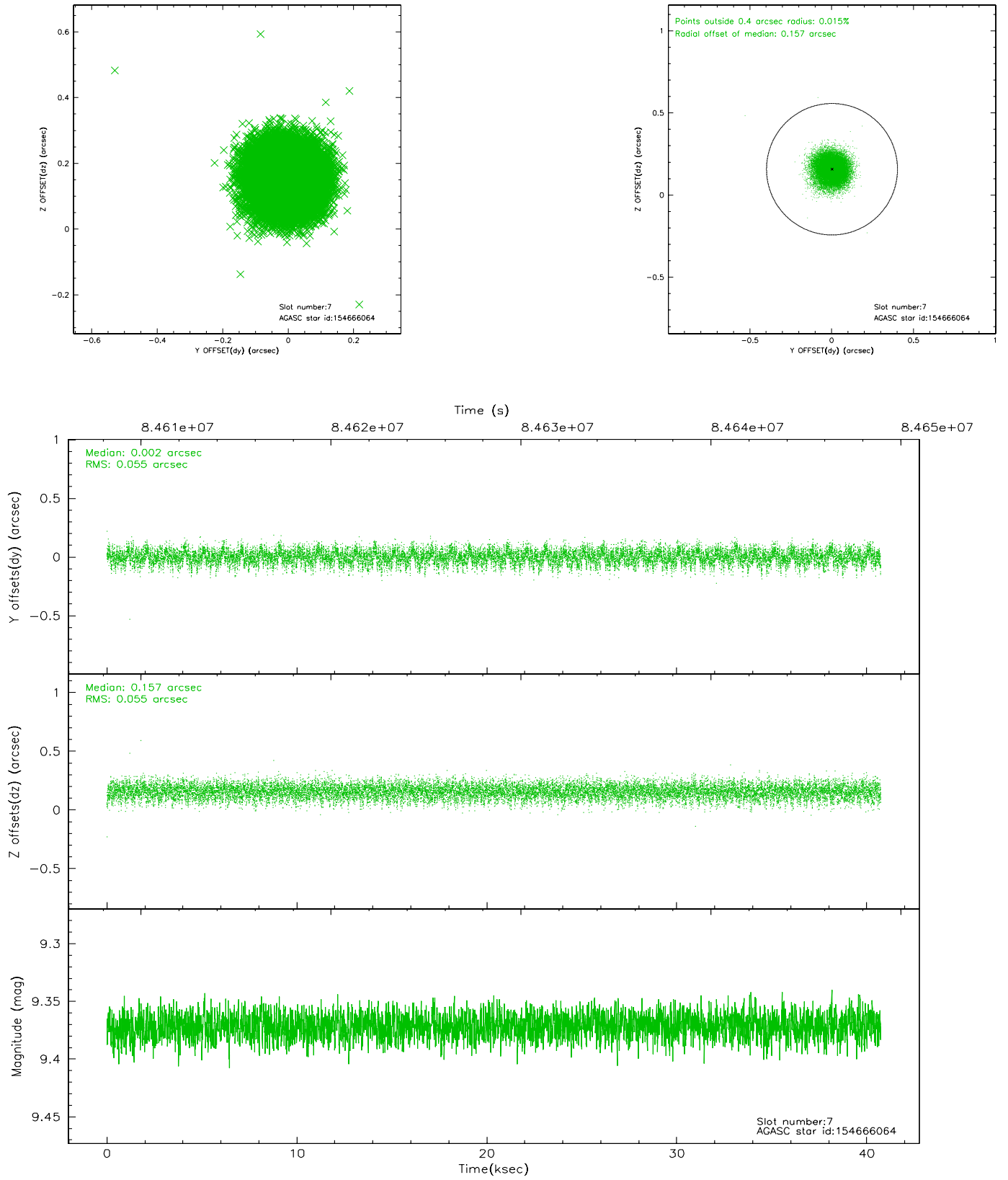
2.4.3 Slot 5



2.4.4 Slot 6

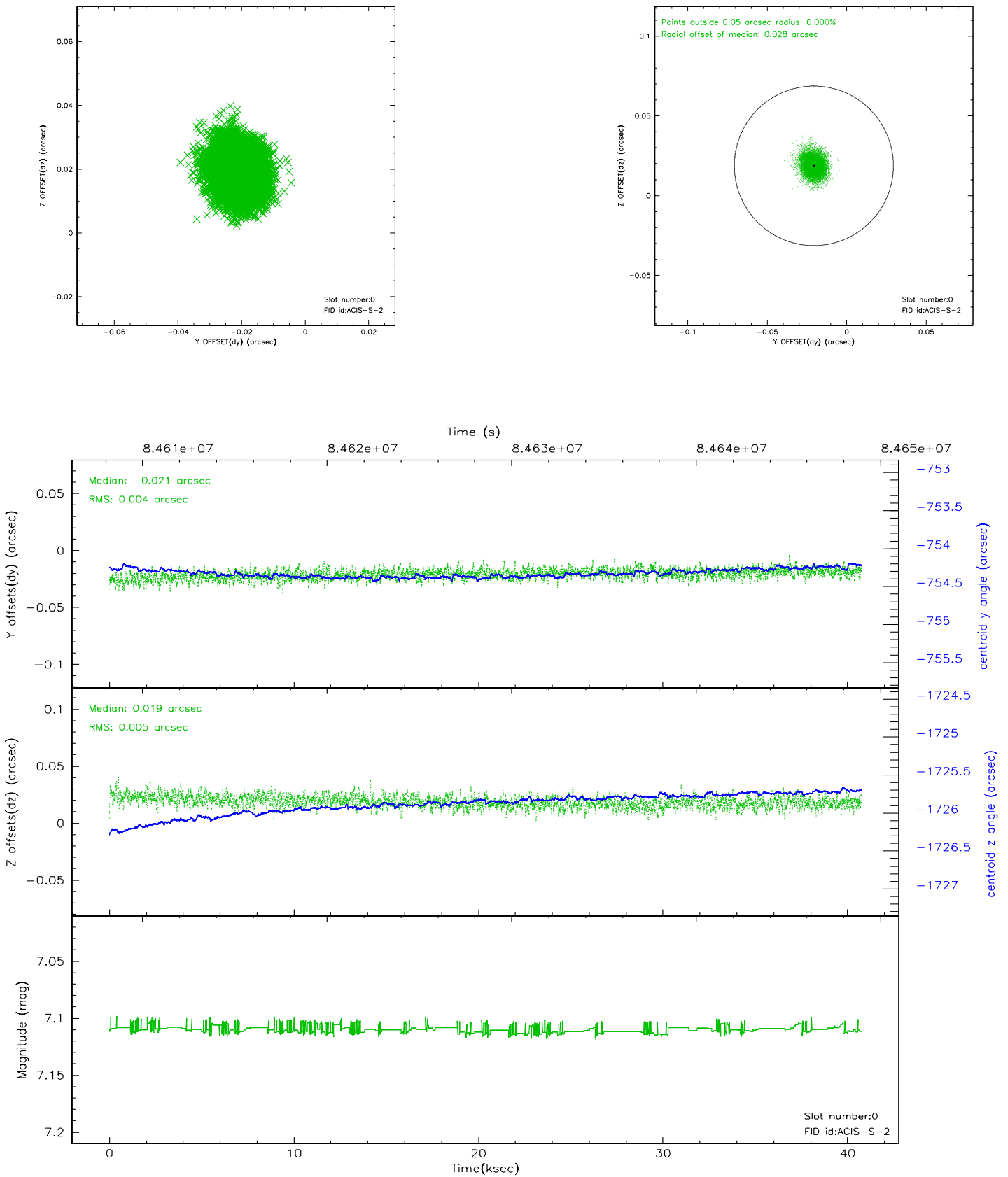


2.4.5 Slot 7

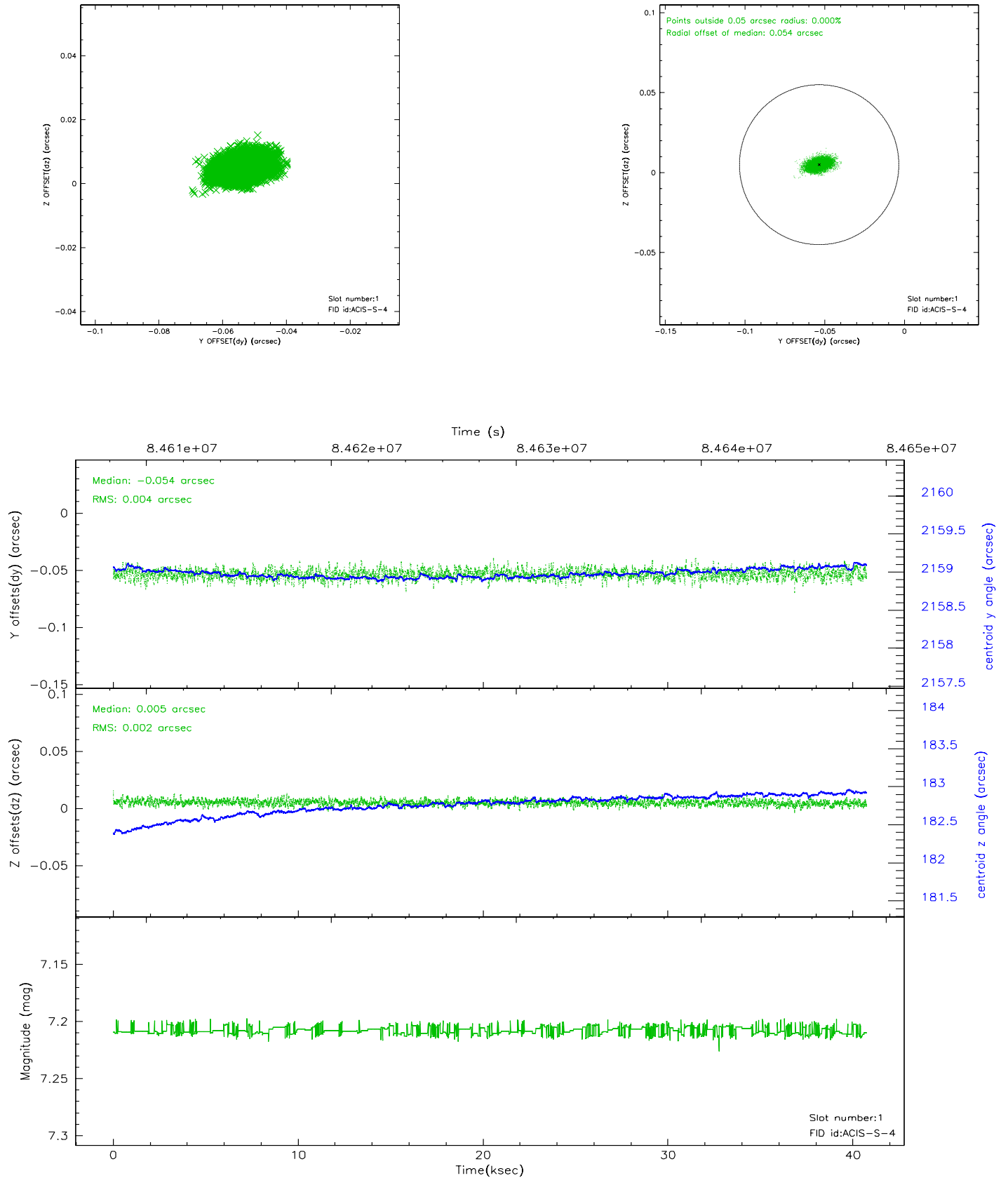


2.5 FID Slots

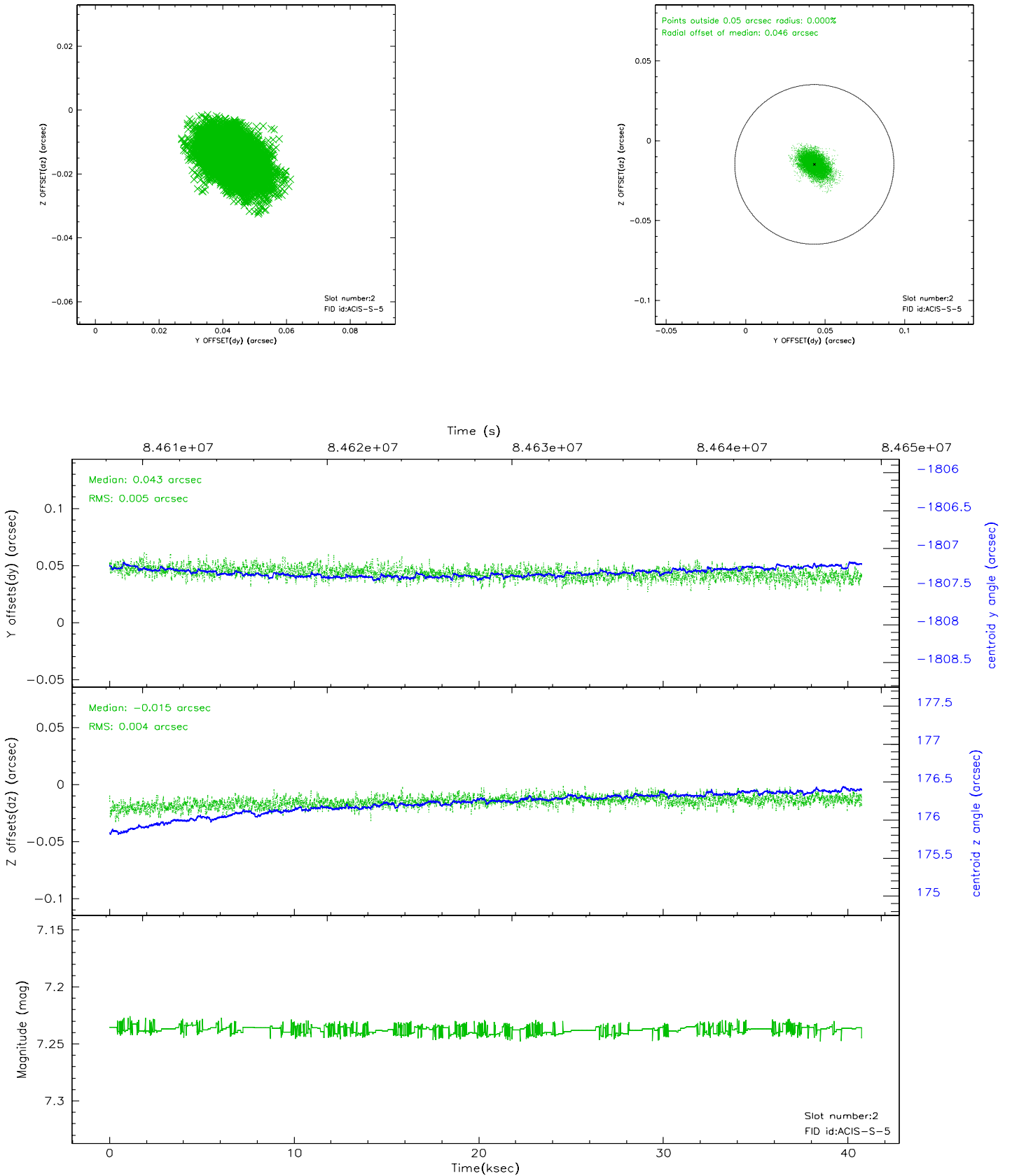
2.5.1 Slot 0



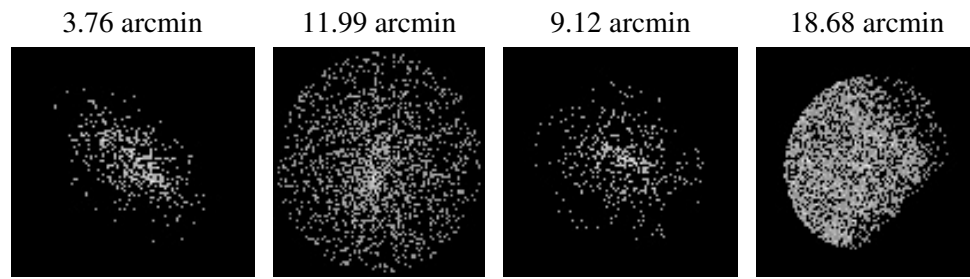
2.5.2 Slot 1



2.5.3 Slot 2



3 Point Sources



A Summary

A.1 Status

V&V Scientist	Jen Lauer
V&V Date (YYYY-MM-DD)	2007.06.07
V&V Edition	1
V&V Disposition and Status	OK
V&V Charge Time	40.345

A.2 Comments

From the previous V&V report:

Roll Tolerance exceeded by 0.14 degrees = 8.4 arcmin Requested: 127 +/-8 deg Actual: 135.14 deg

CDO: Obsid 929 is an observation of a lensed cluster CL0024+17. It was referred to CDO for review because the roll tolerance was exceeded by 8.4 arcmin. The roll constraint was imposed to place another lensed cluster on S0. Since the main science involves CL0024+17, this observation does not need to be repeated.