

V&V Reference Report

L2 ASCDS Version : 7.6.10

Observation 539 - L2 Version 001
Chandra X-Ray Center

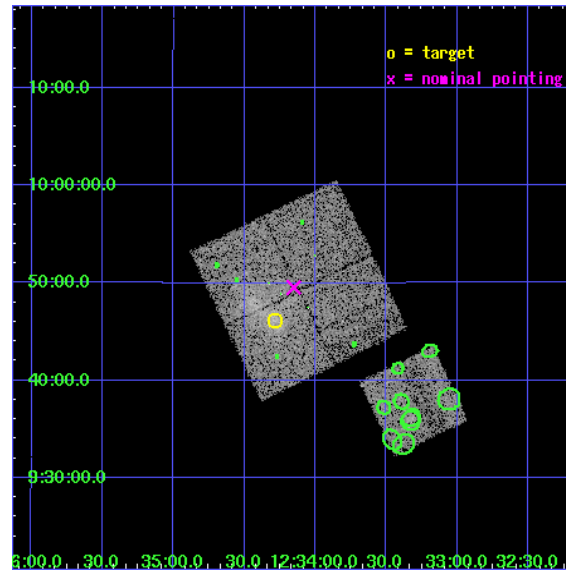
L2 Processing Date : May 10 2007

Contents

1	Front	2
2	OBI	3
2.1	OBI	3
2.1.1	Images	3
2.1.2	Bias	3
2.1.3	Parameters	4
2.1.4	Events	4
2.2	Compared Parameters	5
2.3	Aspect	6
2.4	Star Slots	9
2.4.1	Slot 3	9
2.4.2	Slot 4	10
2.4.3	Slot 5	11
2.4.4	Slot 6	12
2.5	FID Slots	13
2.5.1	Slot 0	13
2.5.2	Slot 1	14
2.5.3	Slot 2	15
3	Point Sources	16
A	Summary	17
A.1	Status	17
A.2	Comments	17

1 Front

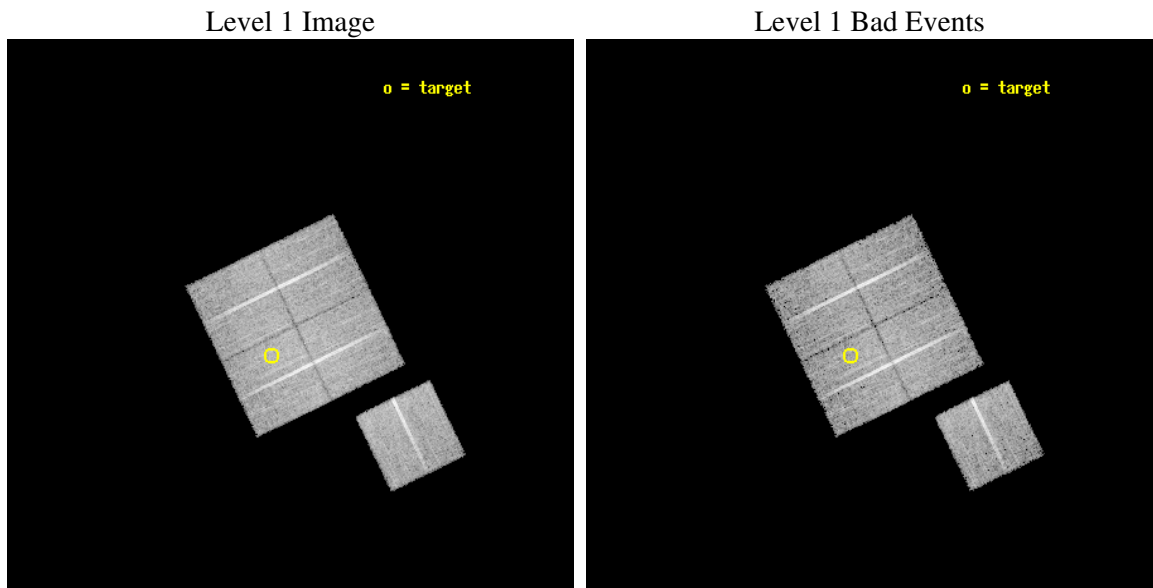
seq_num	800047
obs_id	539
title	DETERMINATION OF H0/Q0
observer	DR. LEON VANSPEYBROECK
object	Z5247
dtcycle	0
cycle	P
ra_targ	188.572
dec_targ	9.77
ra_nom	188.53789559545
dec_nom	9.8256873890799
roll_nom	154.1254106222
revision	4
ontime	9404.8000087589
livetime	9285.7107681573
ontime0	9401.5590485185
ontime1	9404.8000087589
ontime2	9404.8000087589
ontime3	9404.8000087589
ontime6	9404.8000087589
l2events	42623



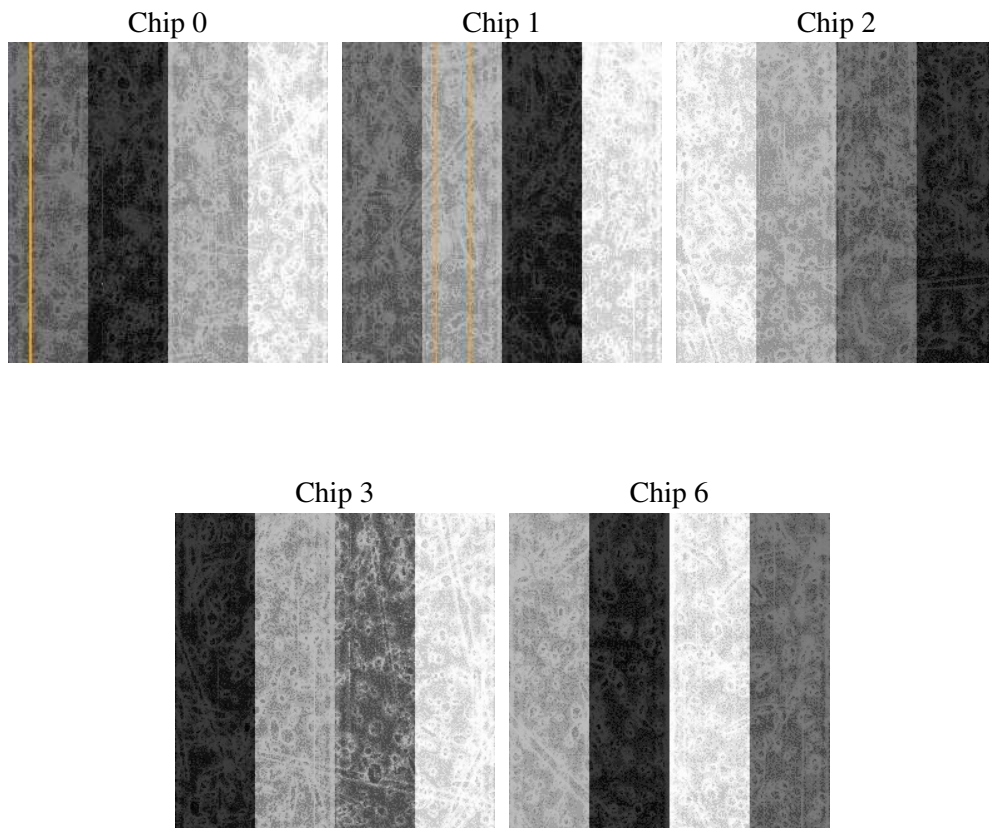
2 OBI

2.1 OBI

2.1.1 Images



2.1.2 Bias



2.1.3 Parameters

obi_num	0
ascdsver	7.6.10
caldsver	3.3.0
date	2007-05-10T17:12:59
revision	4

sched_exp_time	9000.000000
ontime	9404.8000087589
ontime0	9401.5590485185
ontime1	9404.8000087589
ontime2	9404.8000087589
ontime3	9404.8000087589
ontime6	9404.8000087589
l1events	409736

2.1.4 Events

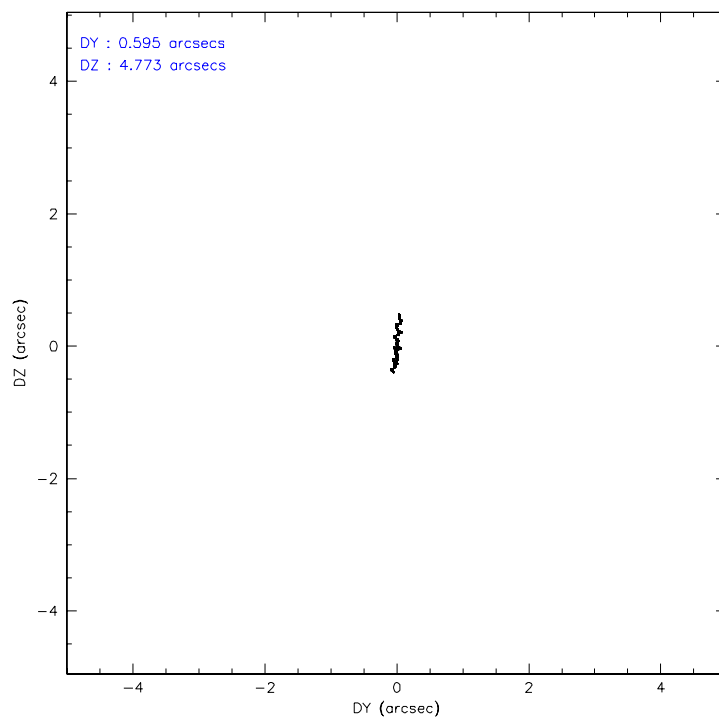
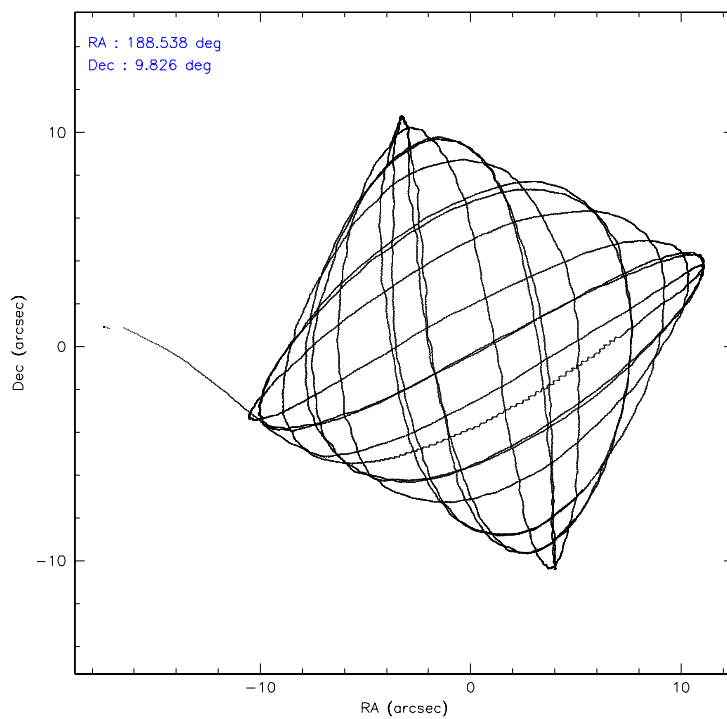
	ccd 0	ccd 1	ccd 2	ccd 3	ccd 6
level 1 events	77808	79706	85085	85506	81631
rejected events	68409	68362	75984	74549	72407
rejected %	87%	85%	89%	87%	88%

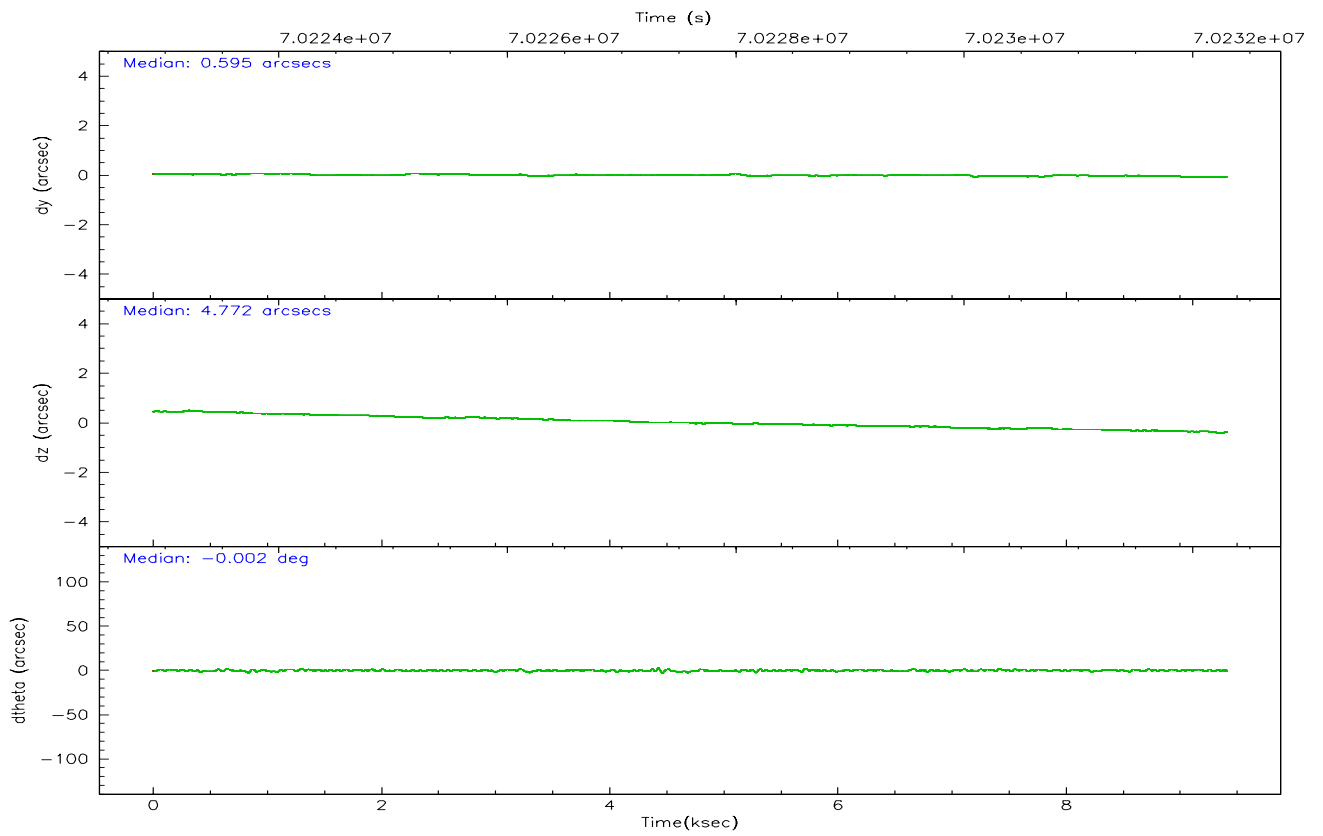
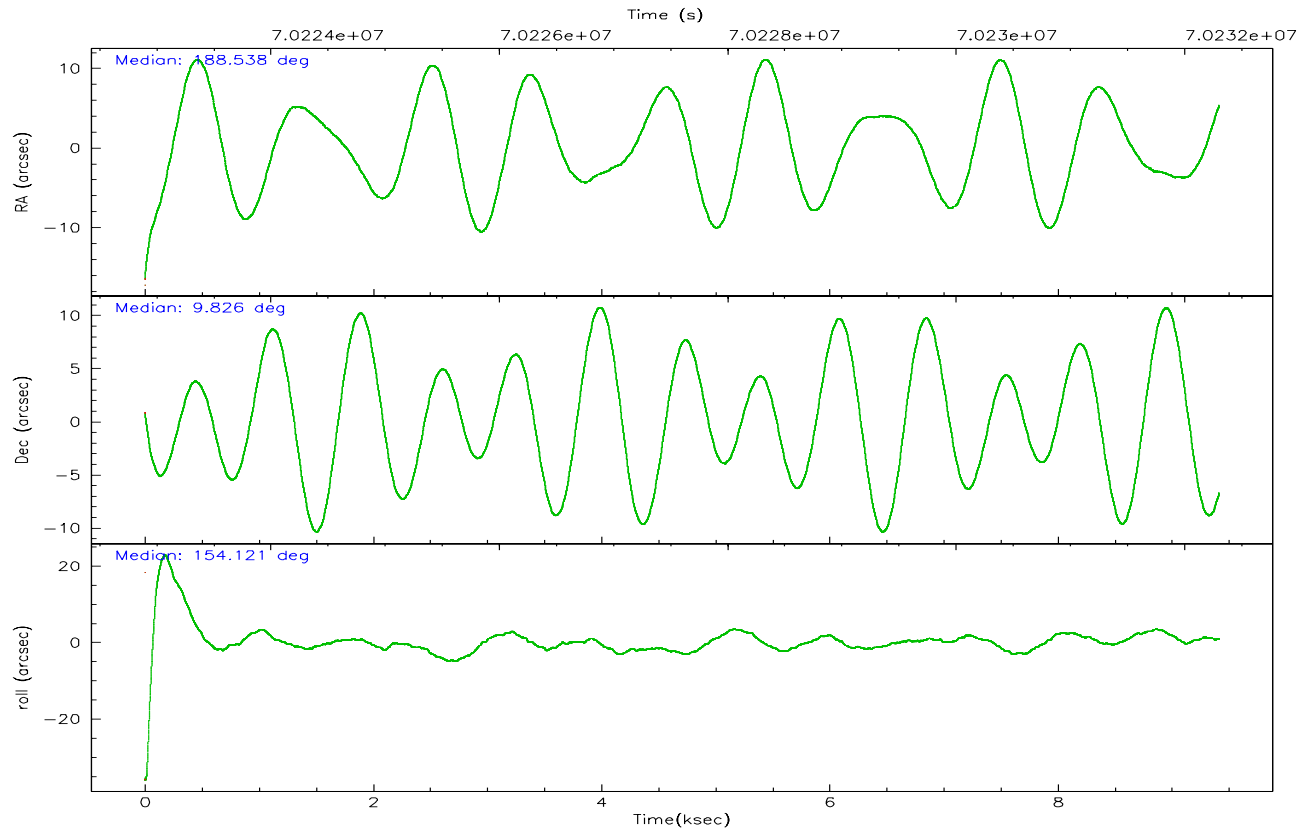
	ccd 0	ccd 1	ccd 2	ccd 3	ccd 6
grade 0 events	4912	6102	4762	6565	4745
	6%	7%	5%	7%	5%
grade 1 events	41	35	40	41	51
	0%	0%	0%	0%	0%
grade 2 events	2396	2590	2297	2394	2289
	3%	3%	2%	2%	2%
grade 3 events	921	1103	811	893	911
	1%	1%	0%	1%	1%
grade 4 events	854	1104	832	884	871
	1%	1%	0%	1%	1%
grade 5 events	2495	2632	2500	2605	2882
	3%	3%	2%	3%	3%
grade 6 events	1820	2052	1859	1769	1859
	2%	2%	2%	2%	2%
grade 7 events	64369	64088	71984	70355	68023
	82%	80%	84%	82%	83%

2.2 Compared Parameters

Parameter	Planned	Actual	Parameter	Planned	Actual
Instrument	ACIS	ACIS	Obspar format version number	6	6
Detector	ACIS-01236	ACIS-01236	Obspar file type	PREDICTED	ACTUAL
Grating	NONE	NONE	Obspar update status	NONE	UPDATED
Data mode	VFAINT	VFAINT	Number of optional ACIS chips dropped	0	0
Observation mode	POINTING	POINTING	On-chip summing requested	N	N
Pointing RA	188.565913	188.5378955954454	Subarray requested	NONE	NONE
Pointing Dec	9.827494	9.825687389079869	Alternating exposures requested	N	N
Pointing Roll	153.912020	154.1254106222041	Primary exposure time	3.200000	3.2
SIM focus pos (mm)	-0.782348	-0.7809083437167272			
SIM defocus (mm)	0	0.001439871863259334			
SIM translation stage pos (mm)	-236.532463	-236.5241547330508			
SIM translation stage offset (mm)	2.94	2.931701730121091			
Observation start time	70223308.184000	70221219.47473			
Observation start date	2000-03-23T18:27:24	2000-03-23T17:53:39			
Observation end time	70232308.184000	70233127.41266499			
Observation end date	2000-03-23T20:57:24	2000-03-23T21:12:07			
Read mode	TIMED	TIMED			

2.3 Aspect



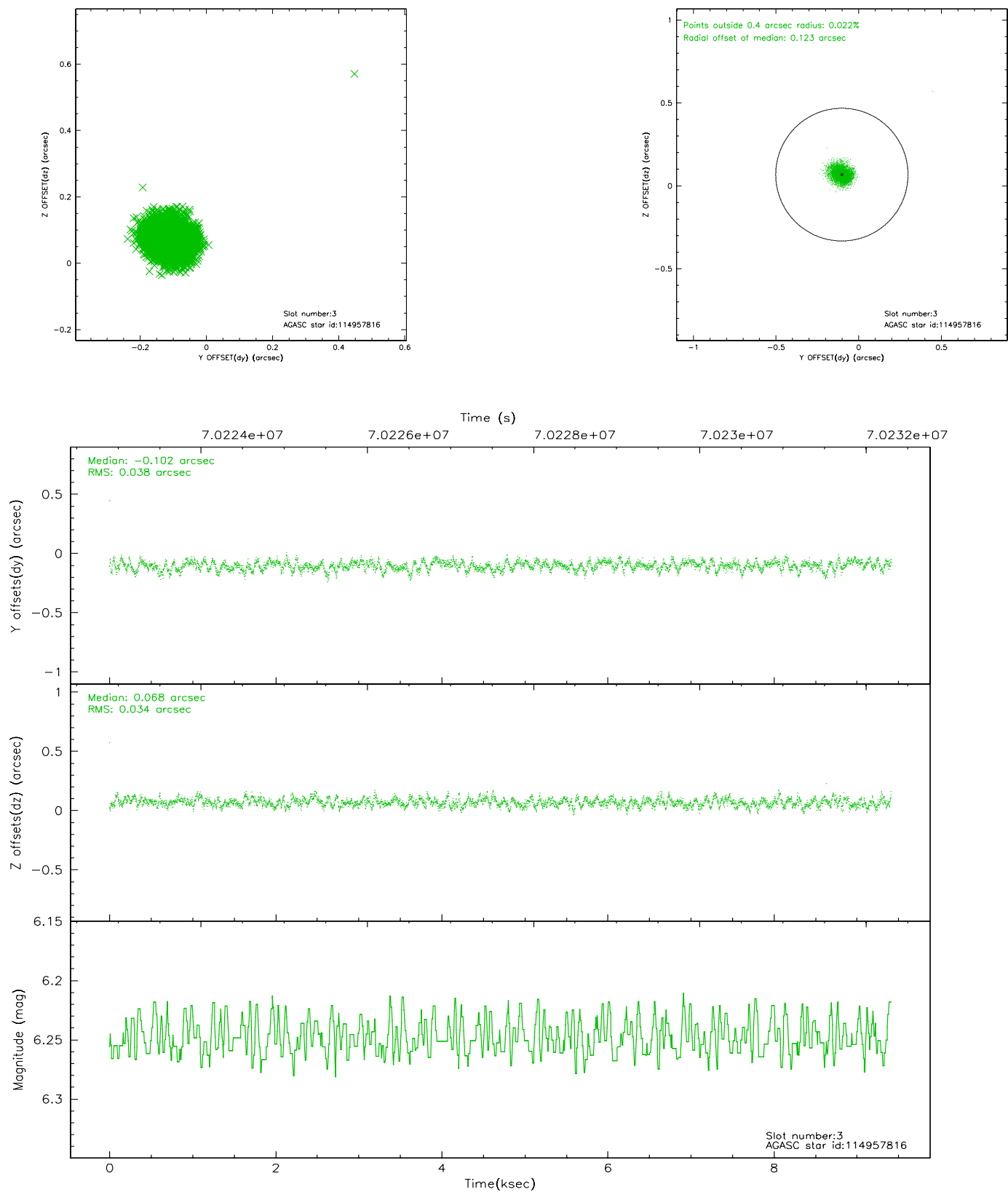


Slot Statistics

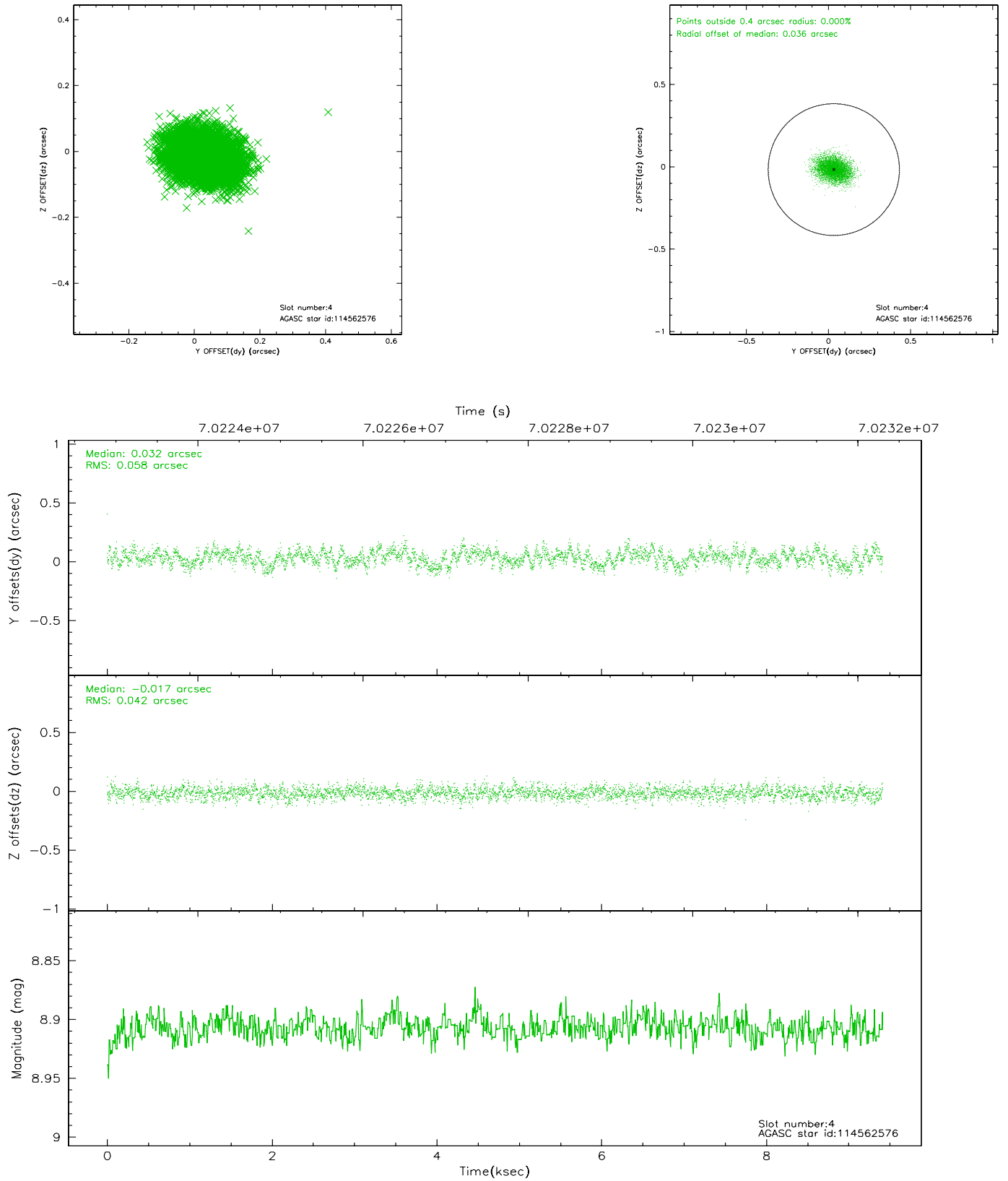
slot	status	id	mag	n_pts	med_dy	med_dz	dr1	dr2	ra	dec	mean_y	mean_z
0	FID	ACIS-I-2	7.15	2294	-0.014	0.044	0.008	0.012	0.000000	0.000000	-754.72	-774.52
1	FID	ACIS-I-4	7.22	2297	-0.051	0.014	0.011	0.017	0.000000	0.000000	2159.07	1131.37
2	FID	ACIS-I-6	7.26	2297	-0.036	0.005	0.012	0.019	0.000000	0.000000	405.94	1774.58
3	GUIDE	114957816	6.25	4593	-0.102	0.068	0.053	0.085	188.261994	10.295673	1707.91	-1041.12
4	GUIDE	114562576	8.91	4592	0.032	-0.017	0.076	0.123	188.579291	9.672237	-288.36	480.34
5	GUIDE	114557512	9.52	4591	0.015	-0.053	0.078	0.125	188.882545	9.657451	-1278.55	54.62
6	GUIDE	114557088	9.03	4592	0.059	0.001	0.065	0.106	188.466353	9.531660	-151.45	1111.39
7	OMITTED		0.00	0	0.000	0.000	0.000	0.000	0.000000	0.000000	0.00	0.00

2.4 Star Slots

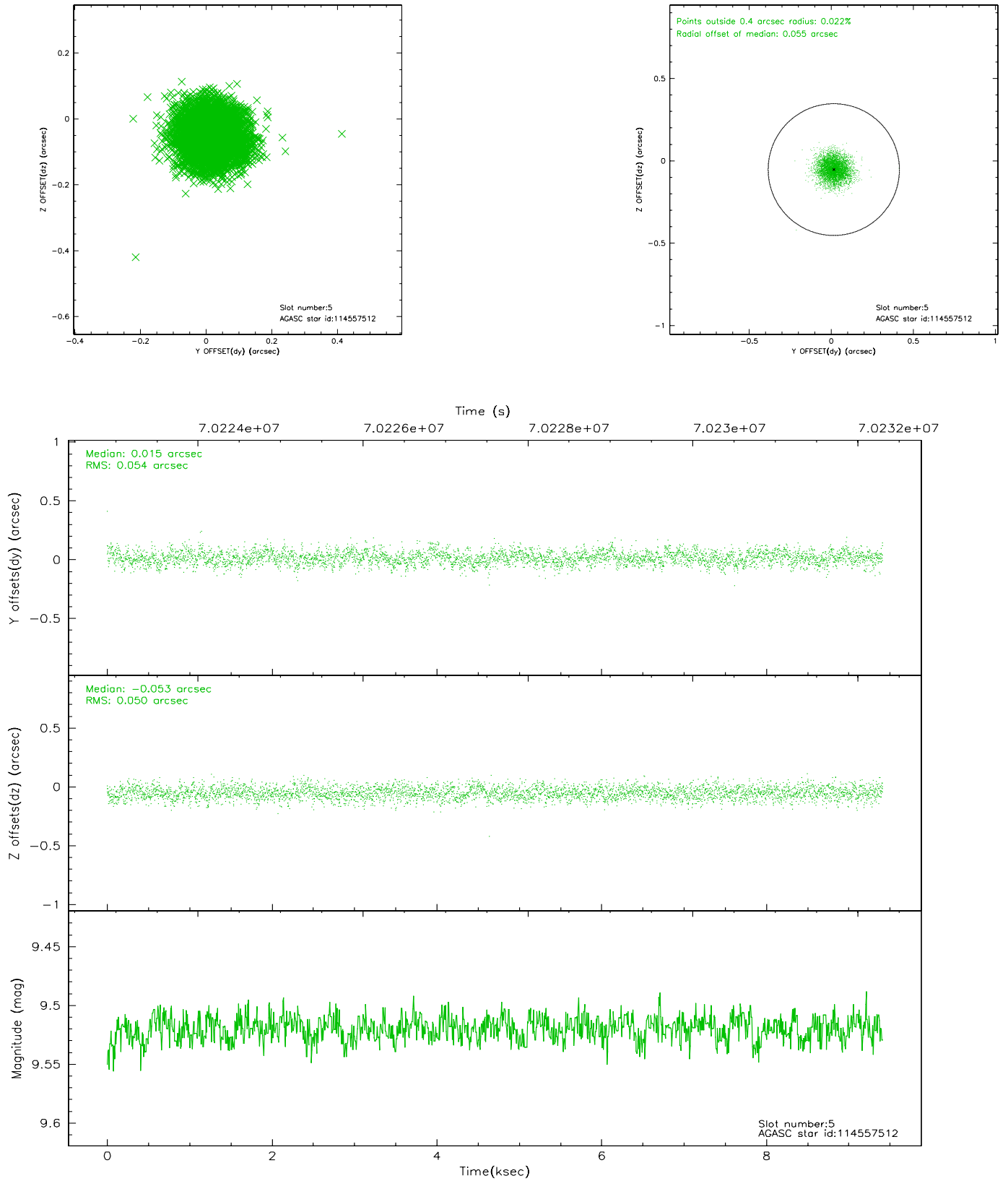
2.4.1 Slot 3



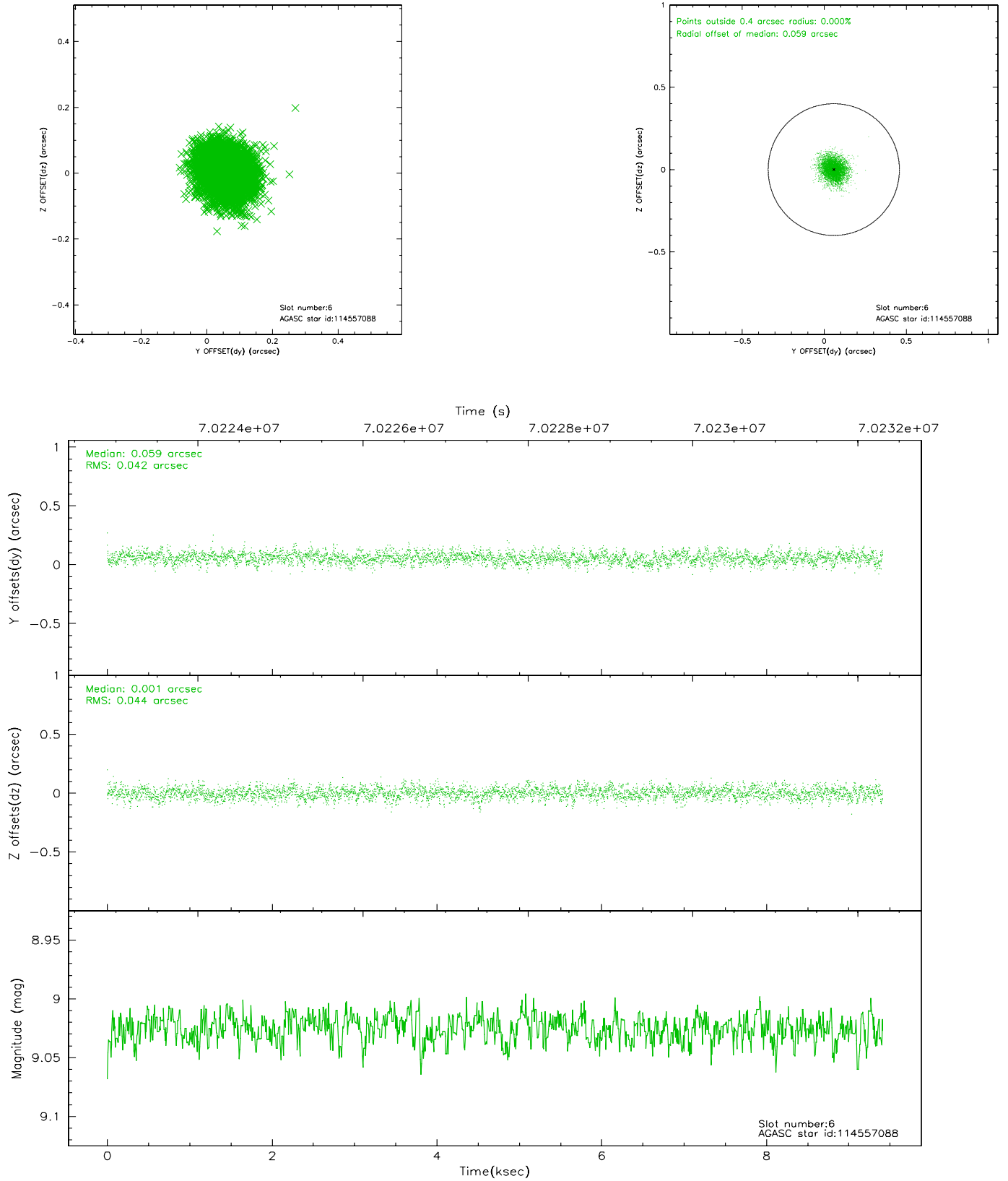
2.4.2 Slot 4



2.4.3 Slot 5

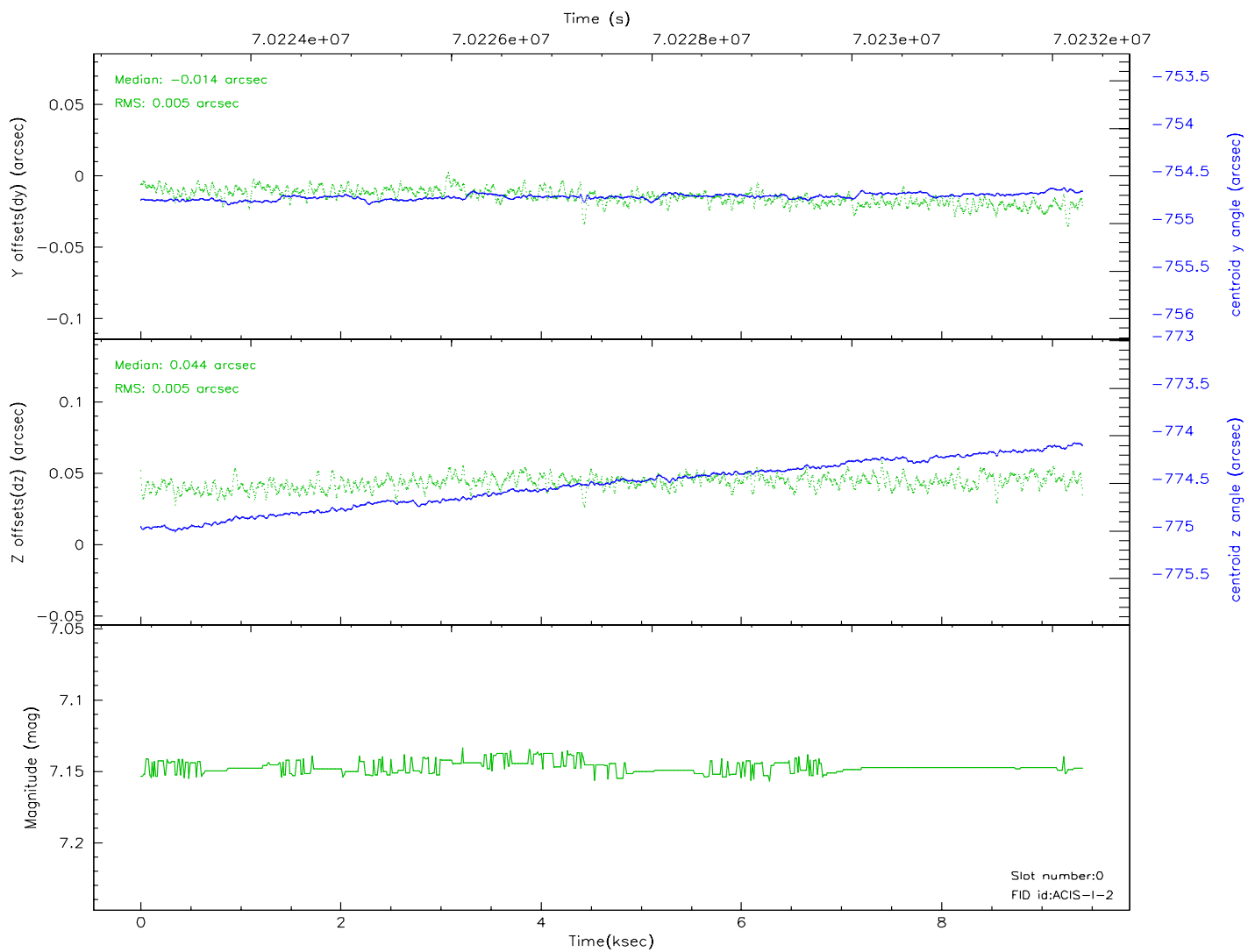
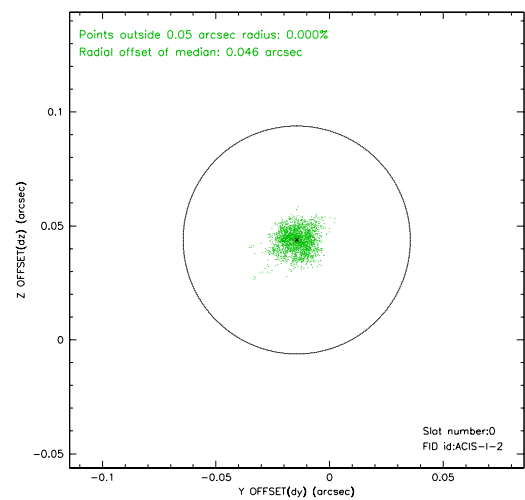
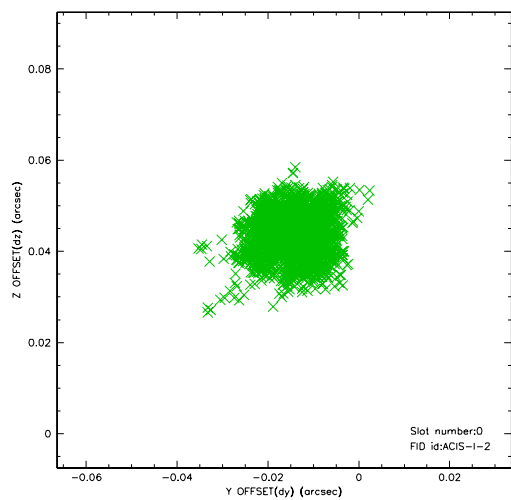


2.4.4 Slot 6

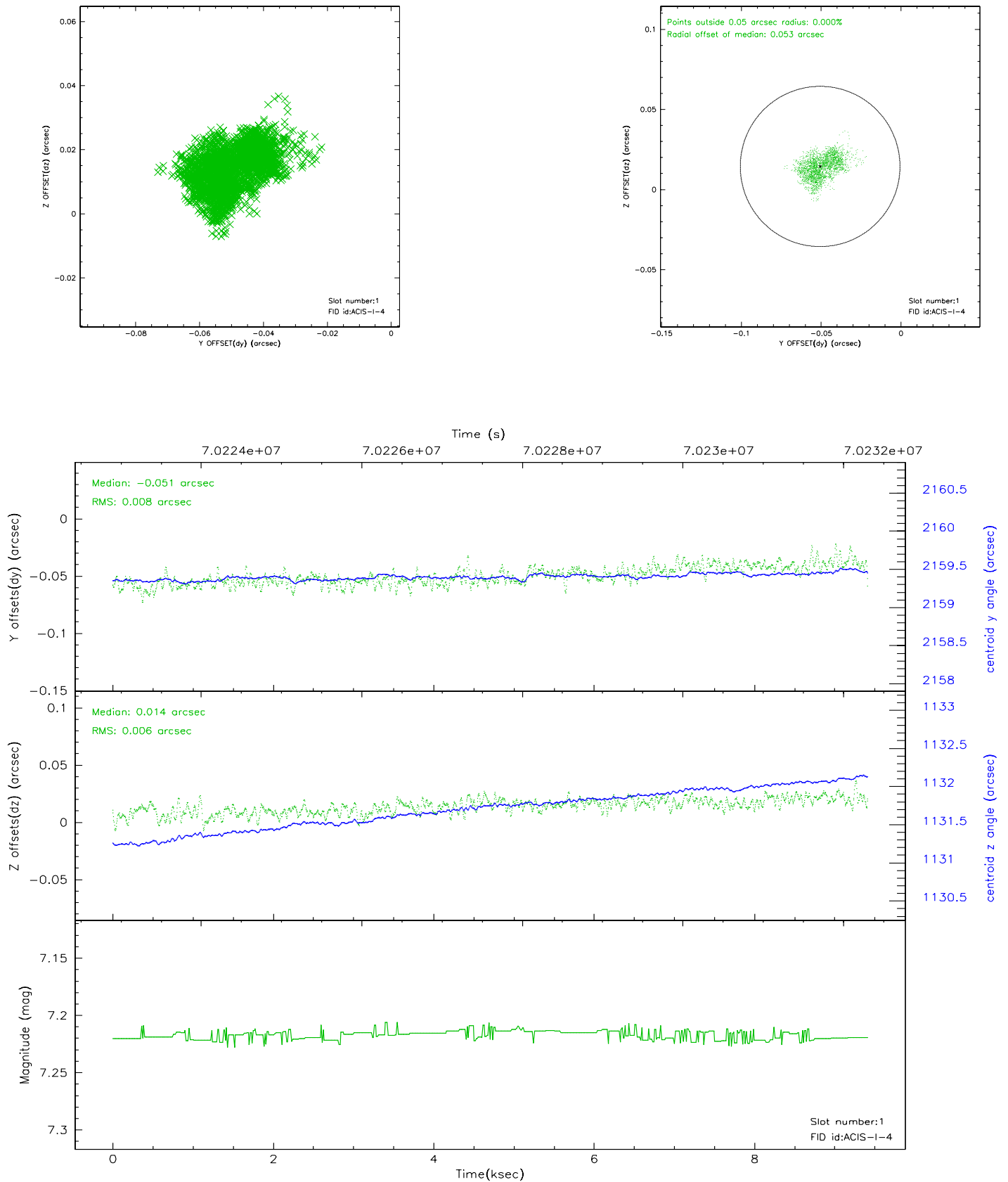


2.5 FID Slots

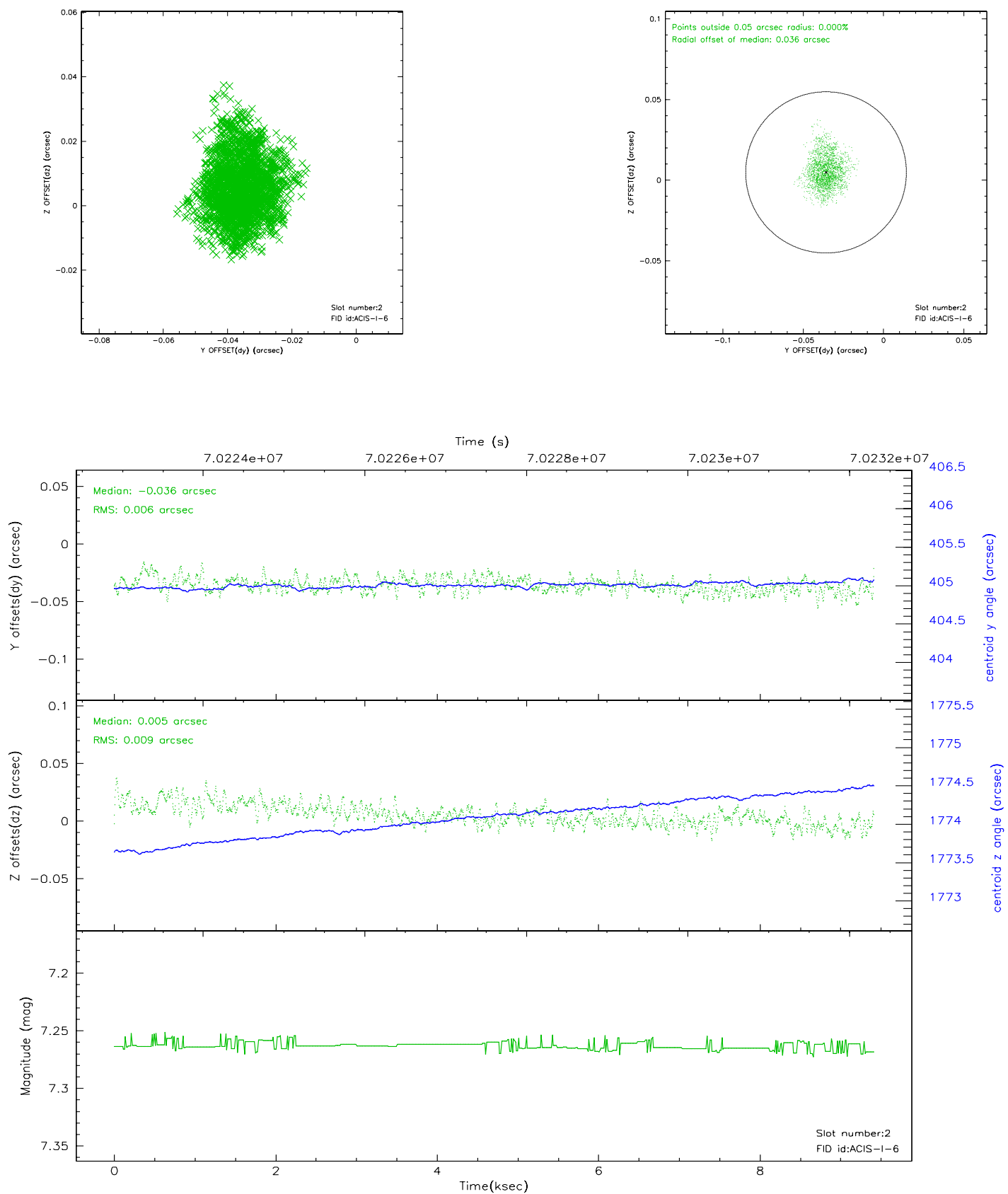
2.5.1 Slot 0



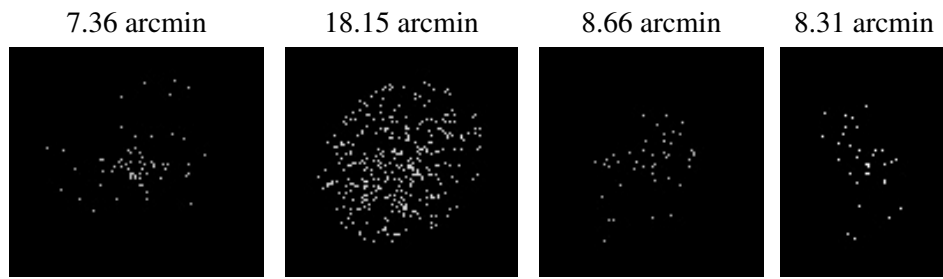
2.5.2 Slot 1



2.5.3 Slot 2



3 Point Sources



A Summary

A.1 Status

V&V Scientist	Jen Lauer
V&V Date (YYYY-MM-DD)	2010.10.01
V&V Edition	2
V&V Disposition and Status	OK
V&V Charge Time	9.404

A.2 Comments

The guide star in slot 7 was manually excluded from the processing due to poor data quality.