

V&V Reference Report

L2 ASCDS Version : 8.4.5

Observation 429 - L2 Version 4
Chandra X-Ray Center

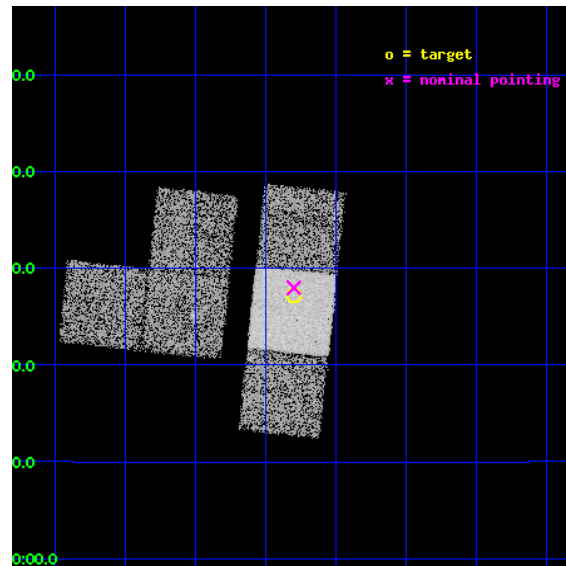
L2 Processing Date : Aug 25 2012

Contents

1	Front	2
2	OBI	3
2.1	OBI	3
2.1.1	Images	3
2.1.2	Bias	3
2.1.3	Parameters	4
2.1.4	Events	4
2.2	Compared Parameters	5
2.3	Aspect	6
2.4	Star Slots	9
2.4.1	Slot 3	9
2.4.2	Slot 4	10
2.4.3	Slot 5	11
2.4.4	Slot 6	12
2.4.5	Slot 7	13
2.5	FID Slots	14
2.5.1	Slot 0	14
2.5.2	Slot 1	15
2.5.3	Slot 2	16
A	Summary	17
A.1	Status	17
A.2	Comments	17

1 Front

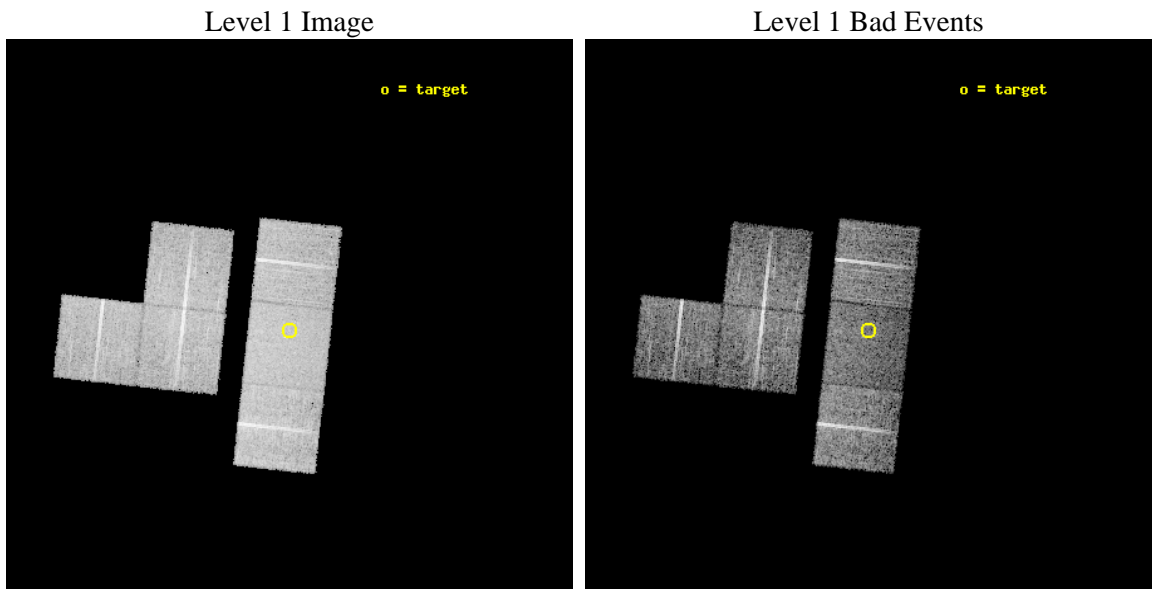
seq_num	700101	Sequence number
obs_id	429	Observation id
title	A SURVEY OF GRAVITATIONALLY LENSED QUASARS	Proposal title
observer	Professor Gordon Garmire	Principal investigator
object	MITG J2019+1127	Source name
dtcycle	0	
cycle	P	events from which exps? Prim/Second/Both
ra_targ	304.824583	Observer's specified target RA [deg]
dec_targ	11.453611	Observer's specified target Dec [deg]
ra_nom	304.82501670845	Nominal RA [deg]
dec_nom	11.466449247876	Nominal Dec [deg]
roll_nom	96.220711584302	Nominal Roll [deg]
revision	4	Processing version of data
ontime	7872.0000073165	Sum of GTIs [s]
livetime	7772.3200032745	Livetime [s]
ontime1	7872.0000073165	Sum of GTIs [s]
ontime2	7872.0000073165	Sum of GTIs [s]
ontime3	7872.0000073165	Sum of GTIs [s]
ontime6	7872.0000073165	Sum of GTIs [s]
ontime7	7872.0000073165	Sum of GTIs [s]
ontime8	7872.0000073165	Sum of GTIs [s]
l2events	54350	Number of level 2 events



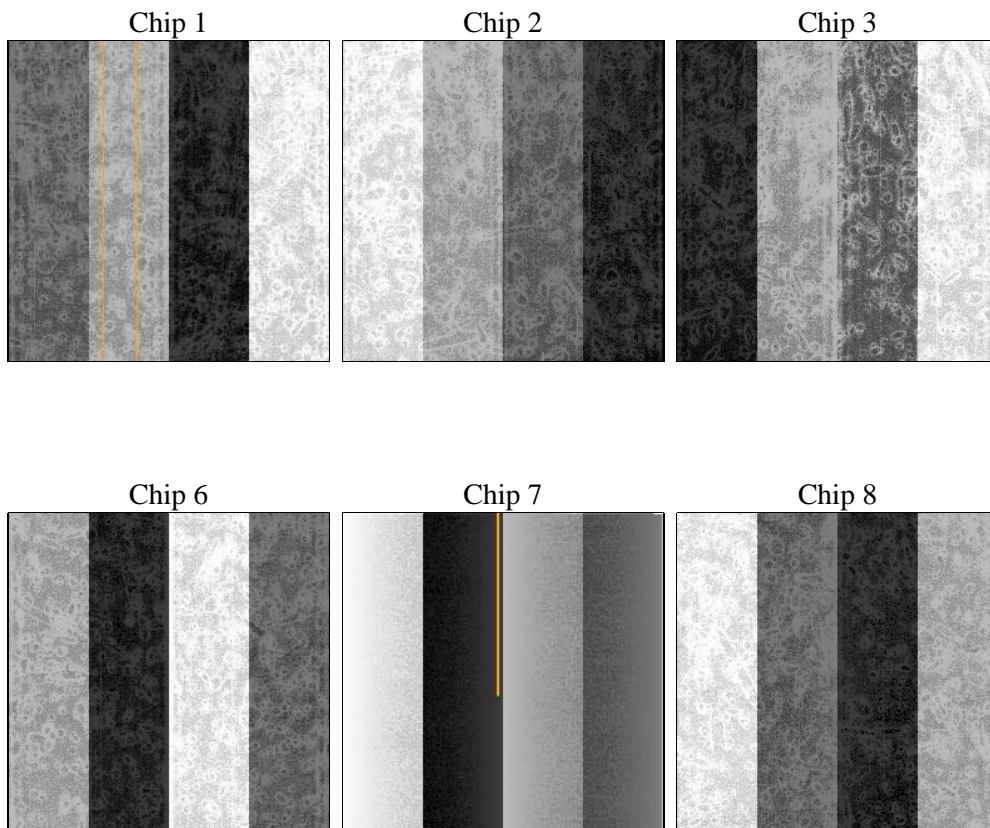
2 OBI

2.1 OBI

2.1.1 Images



2.1.2 Bias



2.1.3 Parameters

obi_num	0	Obi number	sched_exp_time	7400.000000	[s] Scheduled observation exposure time
ascdsver	8.4.5	Processing system revision	ontime	7872.0000073165	Sum of GTIs [s]
caldsver	4.5.1.1	 	ontime1	7872.0000073165	Sum of GTIs [s]
date	2012-08-25T15:32:46	Date and time of file creation	ontime2	7872.0000073165	Sum of GTIs [s]
revision	4	Processing version of data	ontime3	7872.0000073165	Sum of GTIs [s]
			ontime6	7872.0000073165	Sum of GTIs [s]
			ontime7	7872.0000073165	Sum of GTIs [s]
			ontime8	7872.0000073165	Sum of GTIs [s]
			l1events	378673	Number of level 1 events

2.1.4 Events

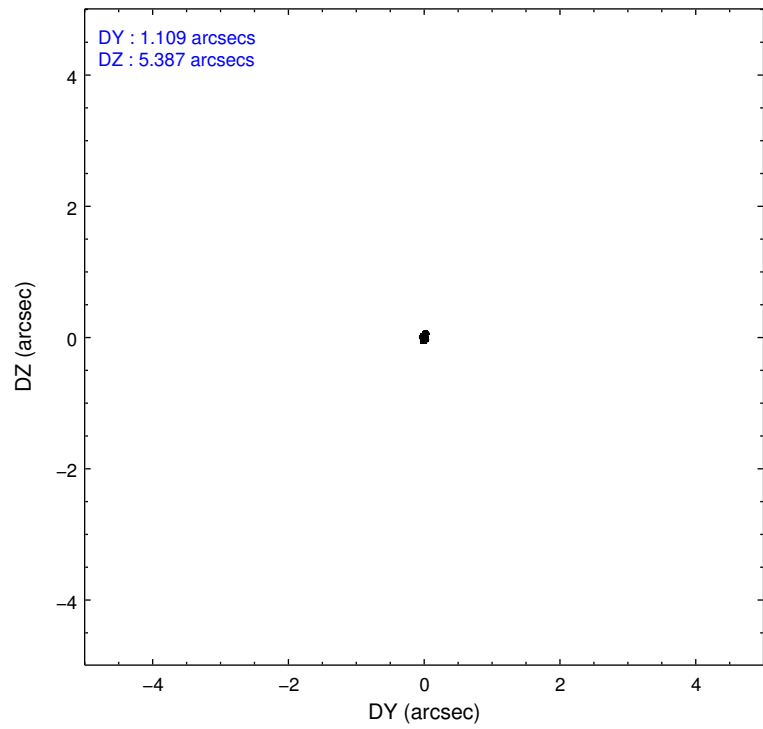
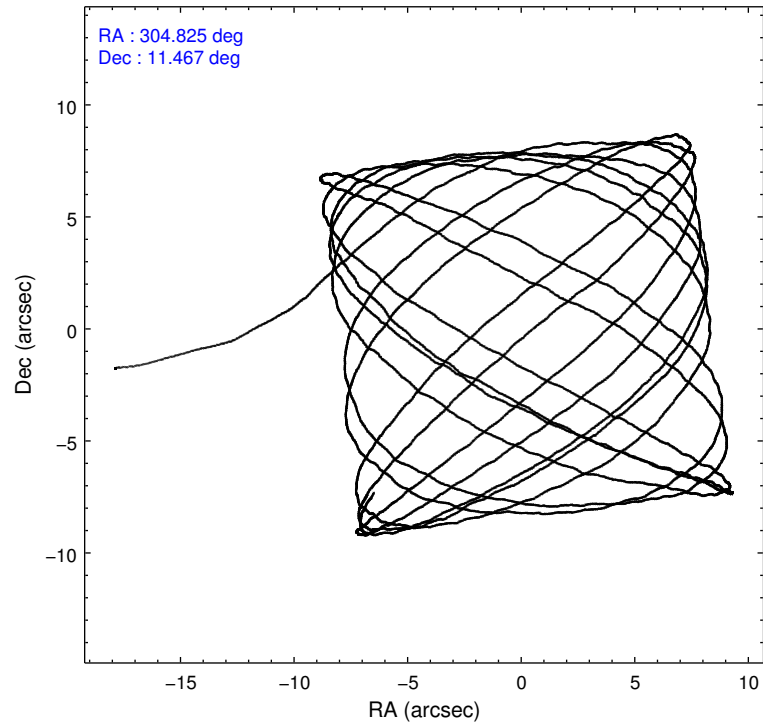
	ccd 1	ccd 2	ccd 3	ccd 6	ccd 7	ccd 8		ccd 1	ccd 2	ccd 3	ccd 6	ccd 7	ccd 8
level 1 events	55463	59135	60435	60687	69288	73665	grade 0 events	2681	2762	2759	2707	2988	4252
rejected events	49115	53130	54349	54475	41086	60662		4%	4%	4%	4%	4%	5%
rejected %	88%	89%	89%	89%	59%	82%	grade 1 events	28	31	27	31	67	31
								0%	0%	0%	0%	0%	0%
							grade 2 events	1304	1255	1256	1266	5885	2980
								2%	2%	2%	2%	8%	4%
							grade 3 events	751	632	648	663	2738	1502
								1%	1%	1%	1%	3%	2%
							grade 4 events	703	618	616	652	2779	1385
								1%	1%	1%	1%	4%	1%
							grade 5 events	2032	1760	1955	2157	6661	2743
								3%	2%	3%	3%	9%	3%
							grade 6 events	1208	1012	1083	1208	15223	3524
								2%	1%	1%	1%	21%	4%
							grade 7 events	46756	51065	52091	52003	32947	57248
								84%	86%	86%	85%	47%	77%

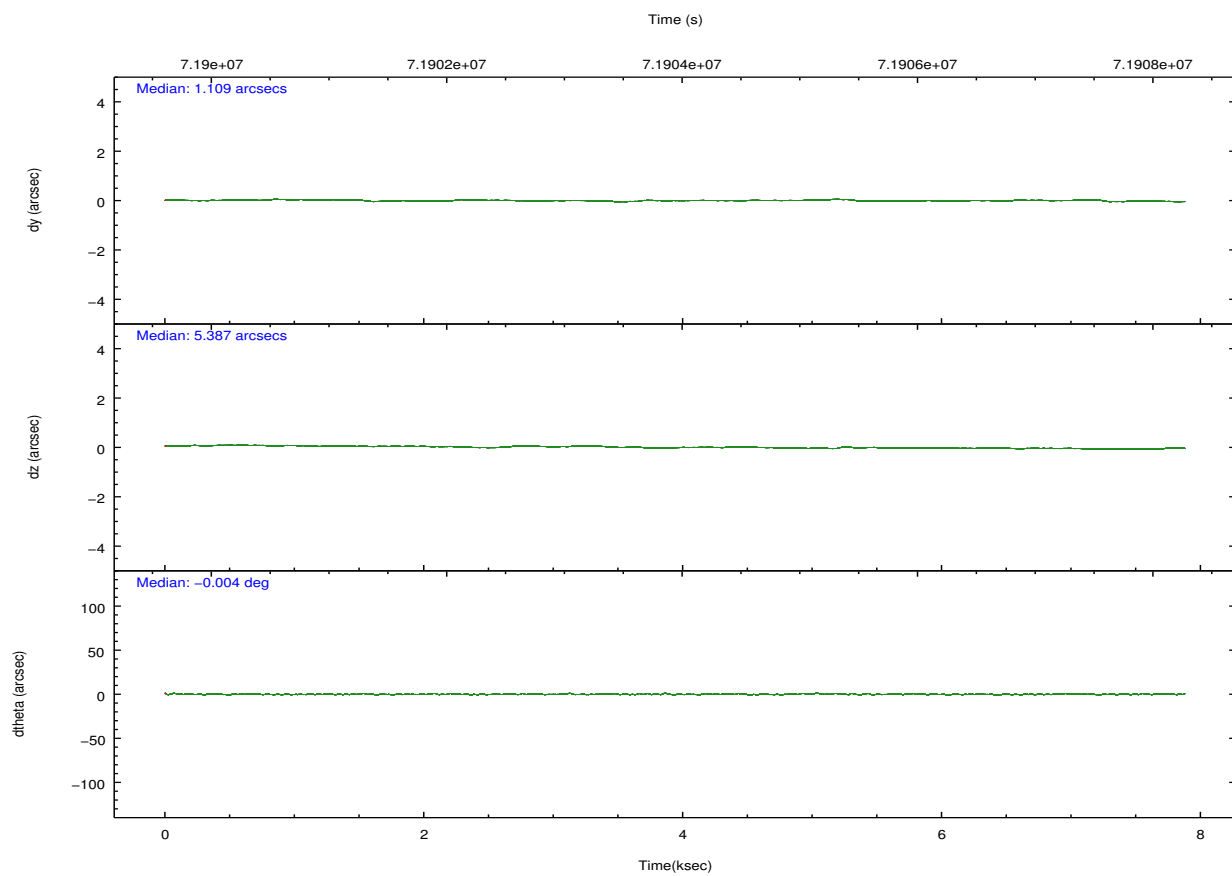
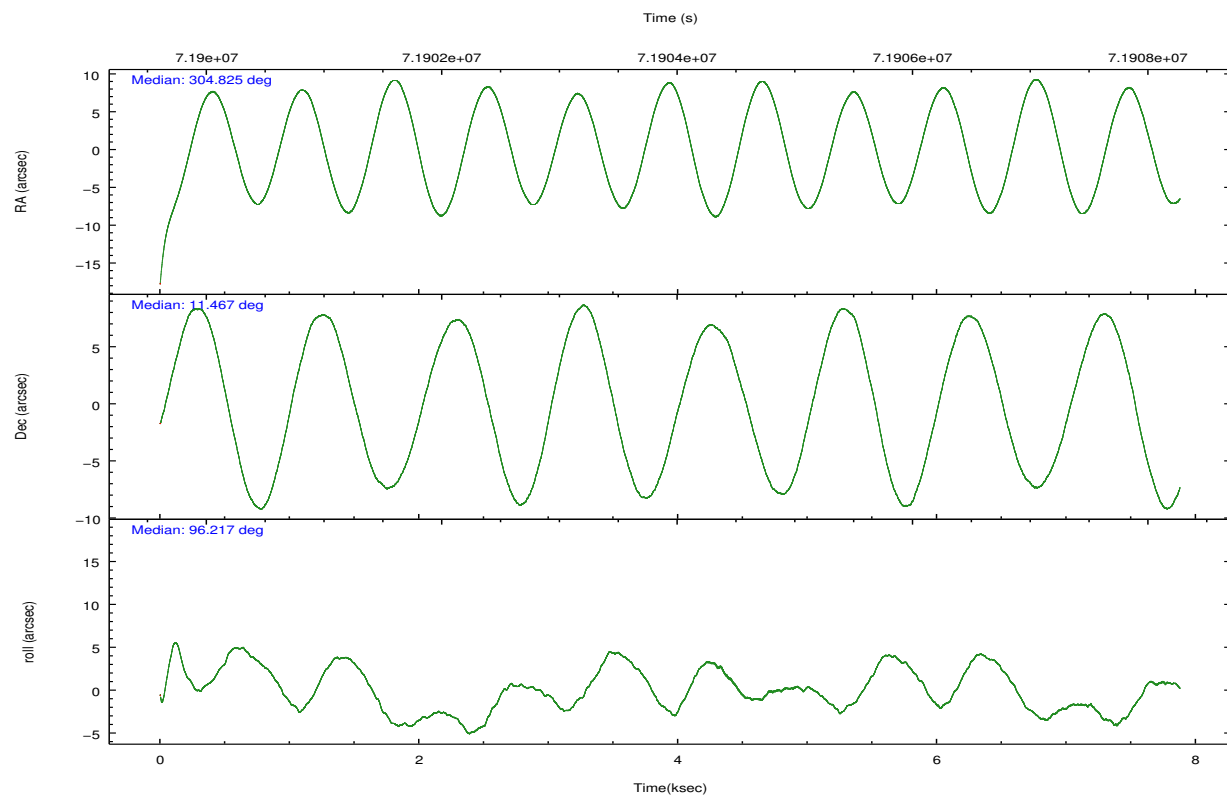
2.2 Compared Parameters

Parameter	Planned	Actual
Instrument	ACIS	ACIS
Detector	ACIS-123678	ACIS-123678
Grating	NONE	NONE
Data mode	FAINT	FAINT
Observation mode	POINTING	POINTING
[deg] Pointing RA	304.841667	304.8250167084479
[deg] Pointing Dec	11.444329	11.46644924787618
[deg] Pointing Roll	96.060794	96.22071158430222
[mm] SIM focus pos	-0.684267	-0.6828225247311905
[mm] SIM defocus	0	0.001444936568705701
[mm] SIM translation stage pos	-190.132523	-190.1425803651734
[mm] SIM translation stage offset	0	0.01005778216563158
[s] Observation start time (MET)	71900481.184000	71898930.82364701
Observation start date	2000-04-12T04:20:17	2000-04-12T03:55:30
[s] Observation end time (MET)	71907881.184000	71908736.486507
Observation end date	2000-04-12T06:23:37	2000-04-12T06:38:56
Read mode	TIMED	TIMED

Parameter	Planned	Actual
Obspar format version number	7	7
Obspar file type	PREDICTED	ACTUAL
Obspar update status	NONE	UPDATED
Number of optional ACIS chips dropped	0	0
On-chip summing requested	N	N
Subarray requested	NONE	NONE
Alternating exposures requested	N	N
[s] Primary exposure time	0.000000	3.2

2.3 Aspect



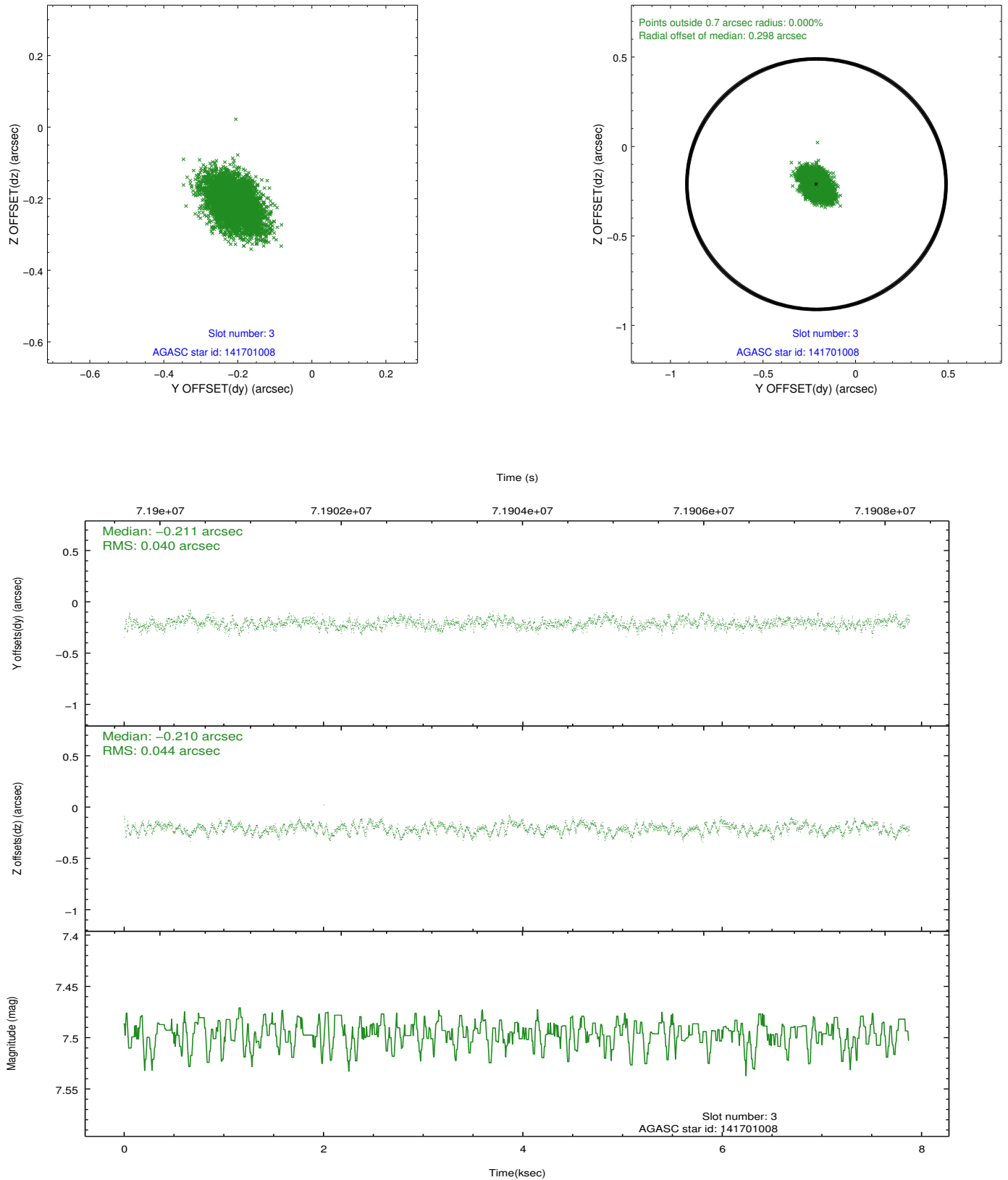


Slot Statistics

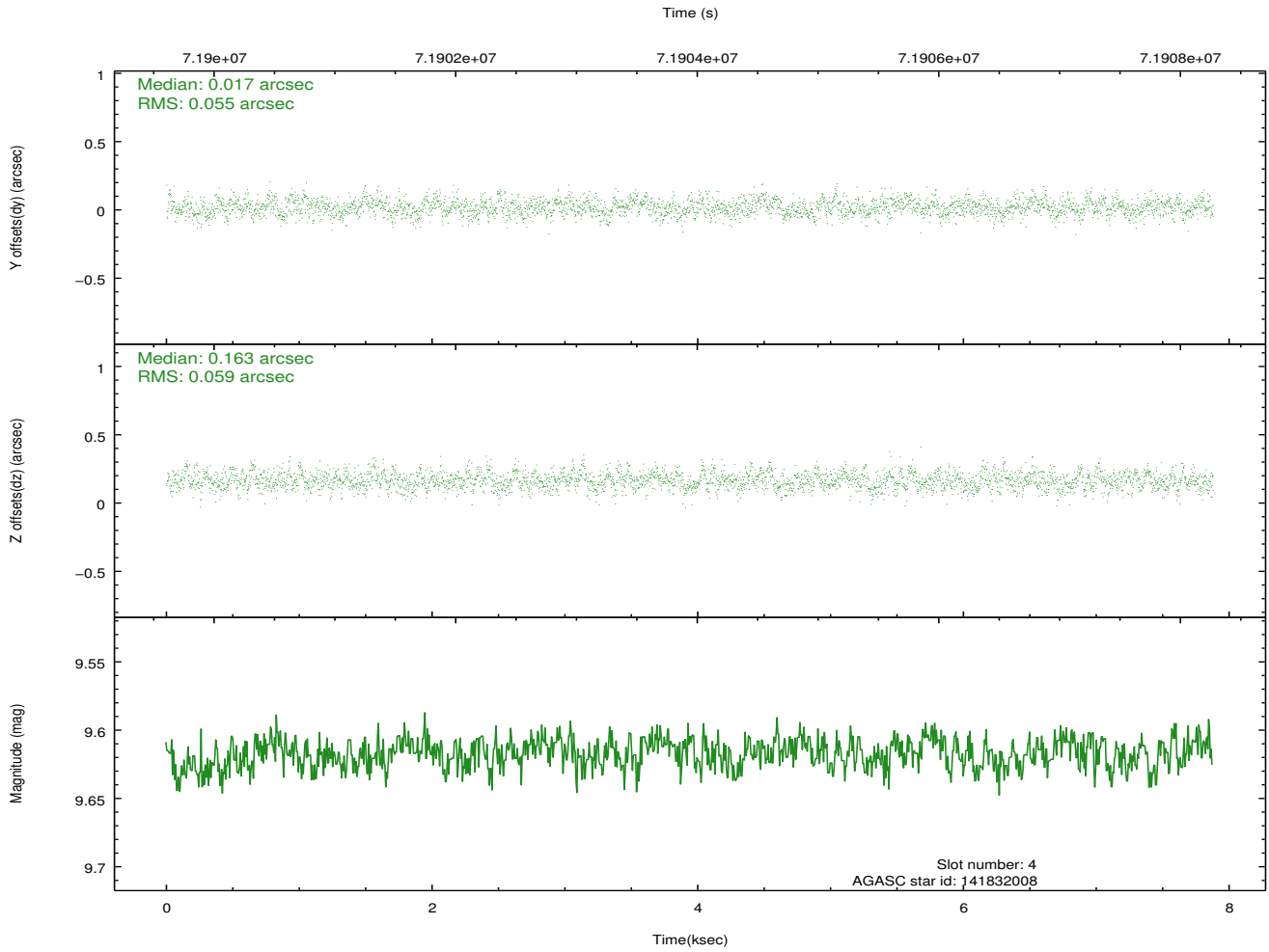
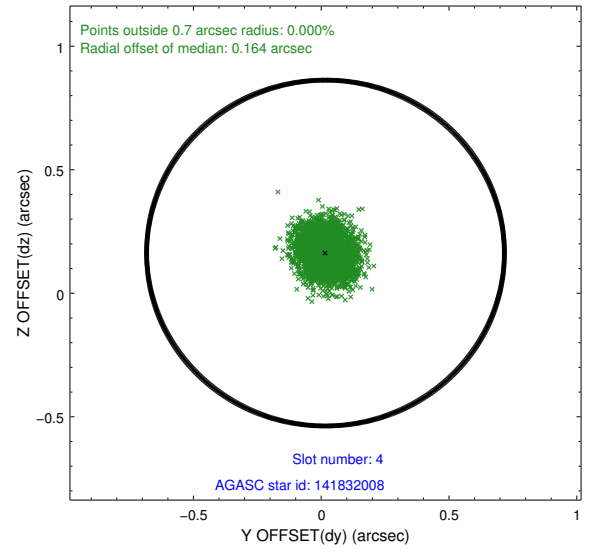
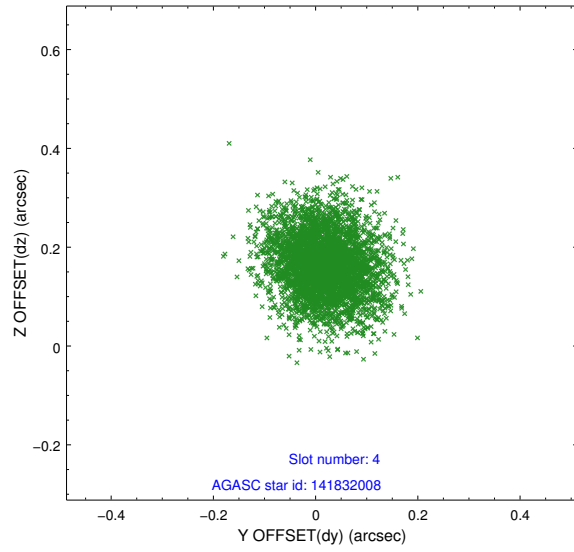
slot	status	id	mag	n_pts	med_dy	med_dz	dr1	dr2	ra	dec	mean_y	mean_z
0	FID	ACIS-S-3	7.36	1922	-0.035	-0.009	0.007	0.012	0.000000	0.000000	59.47	-1855.53
1	FID	ACIS-S-4	7.21	1922	0.004	0.024	0.006	0.010	0.000000	0.000000	2159.68	181.24
2	FID	ACIS-S-5	7.24	1922	0.002	-0.005	0.006	0.010	0.000000	0.000000	-1805.62	175.76
3	GUIDE	141701008	7.50	3844	-0.211	-0.210	0.063	0.104	304.138406	11.933352	2014.75	2276.49
4	GUIDE	141832008	9.62	3843	0.017	0.163	0.086	0.143	305.344673	11.264849	-828.02	-1697.79
5	GUIDE	141836296	9.42	3841	0.041	0.231	0.109	0.173	305.509408	11.434948	-279.84	-2340.47
6	GUIDE	141690128	9.63	3841	-0.092	-0.106	0.100	0.159	304.430388	11.672781	971.51	1353.84
7	GUIDE	141303552	9.97	3841	0.246	-0.072	0.111	0.179	304.739428	10.872884	-2007.20	576.27

2.4 Star Slots

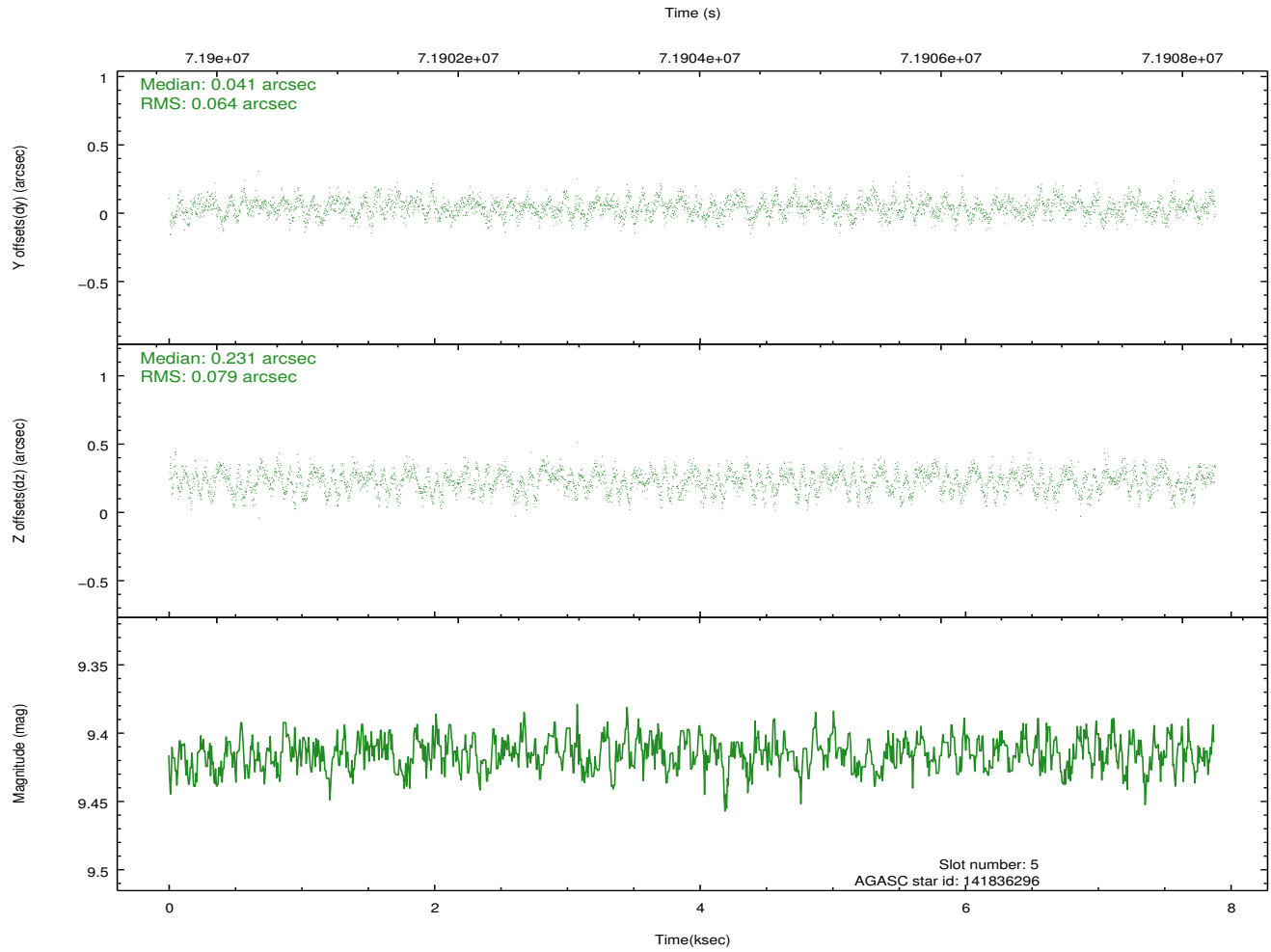
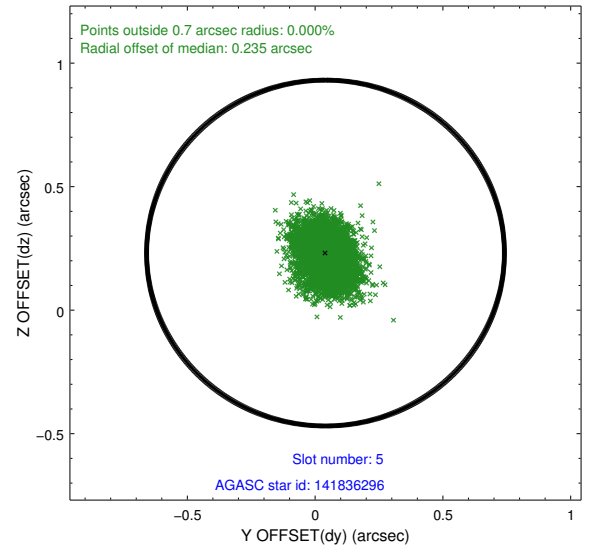
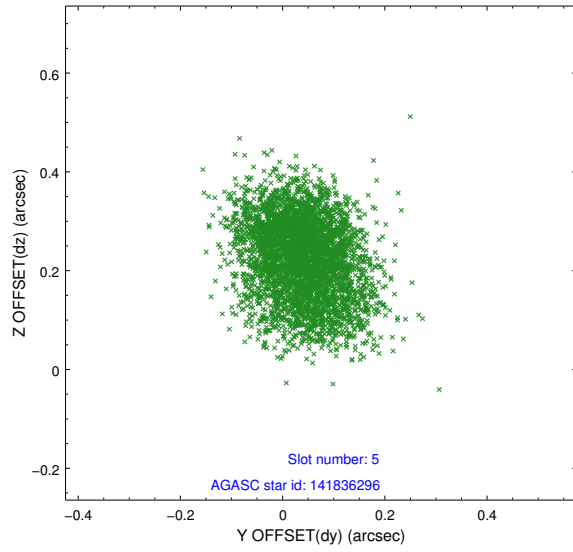
2.4.1 Slot 3



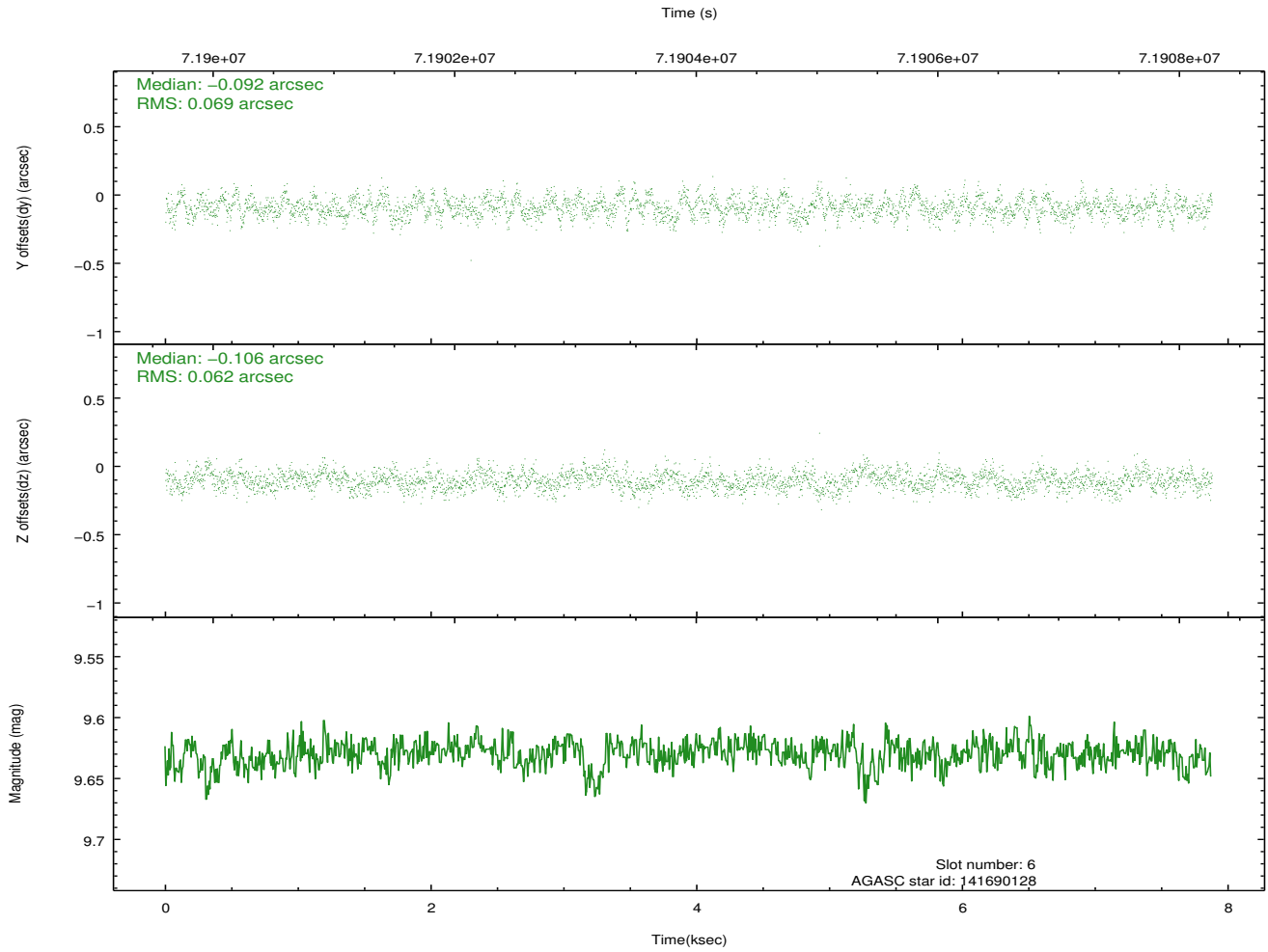
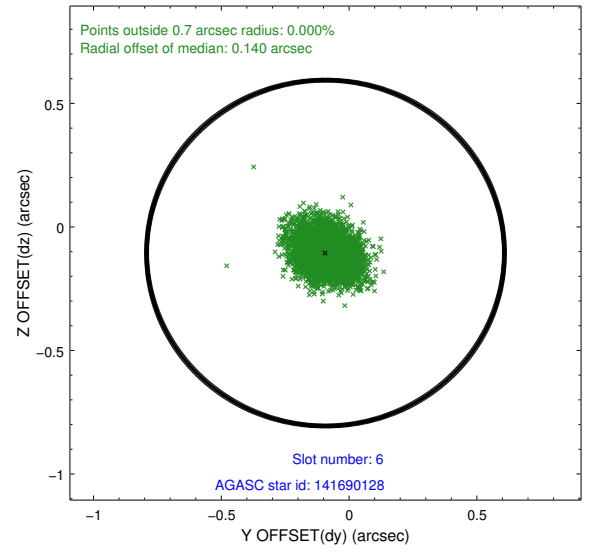
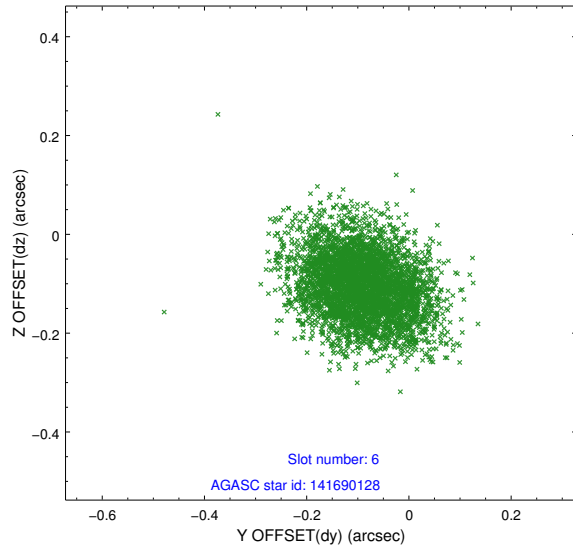
2.4.2 Slot 4



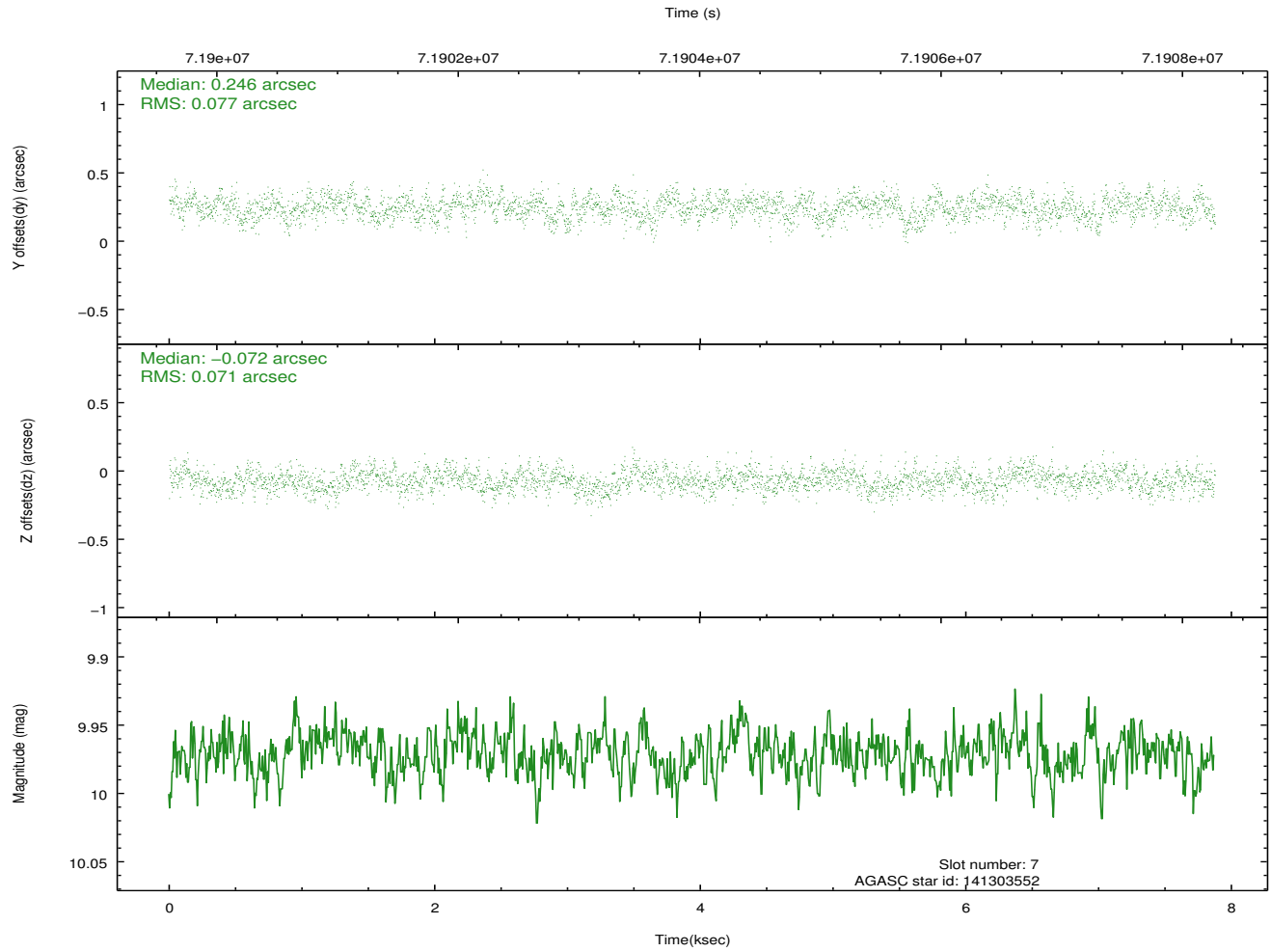
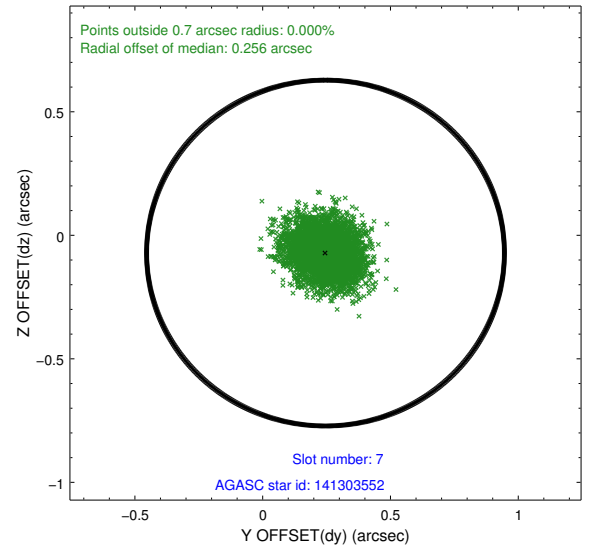
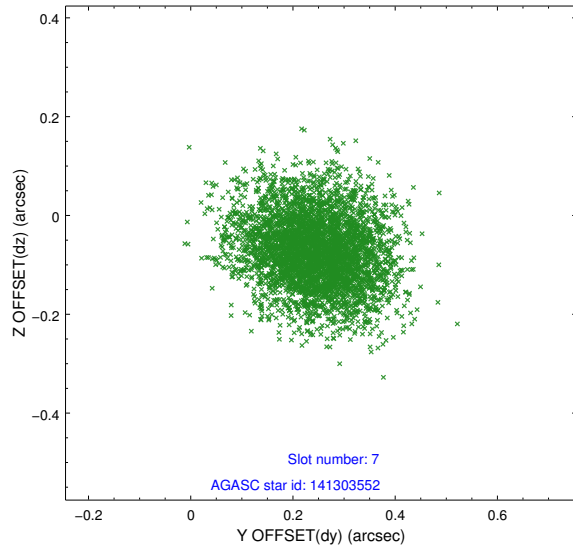
2.4.3 Slot 5



2.4.4 Slot 6

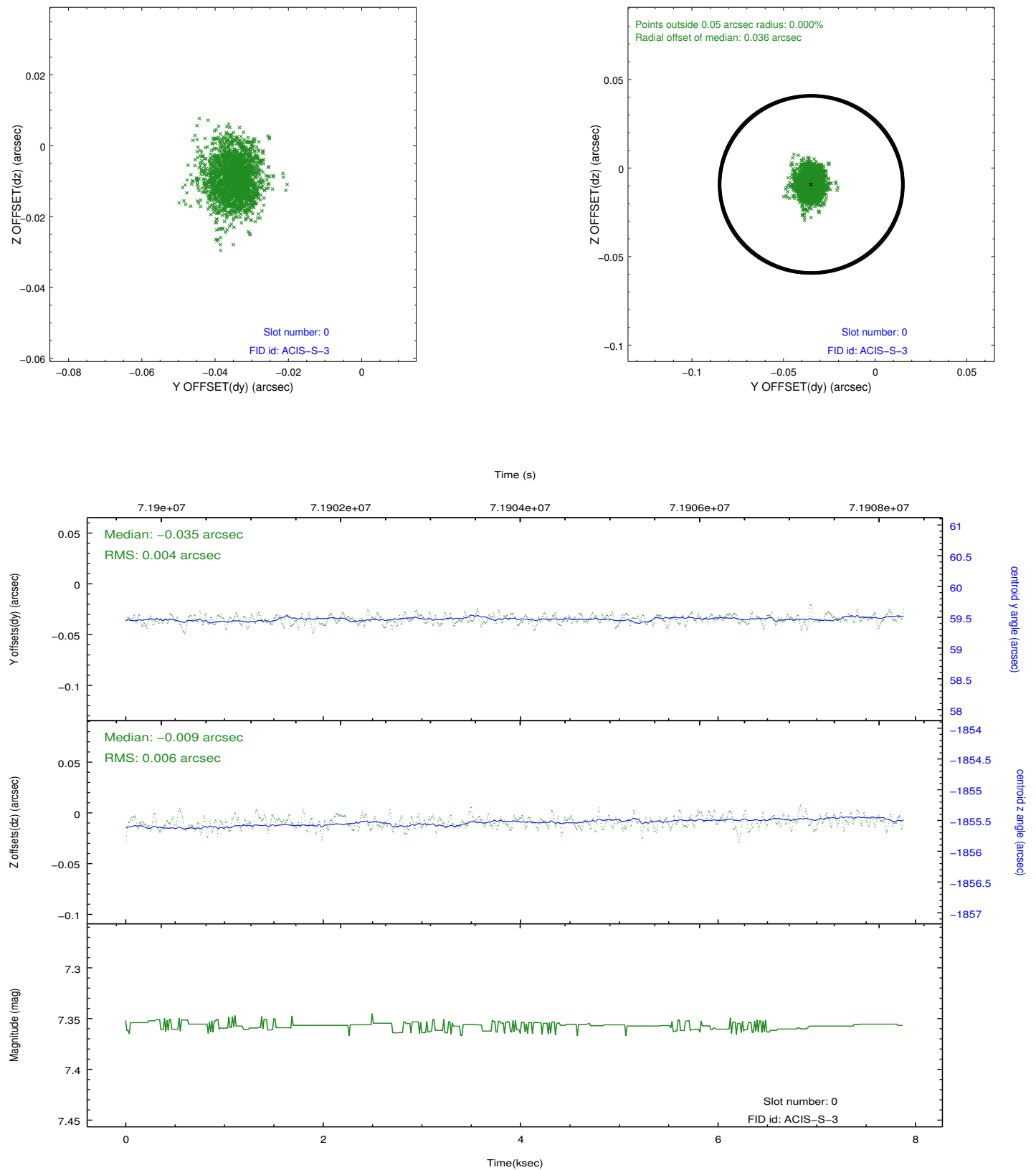


2.4.5 Slot 7

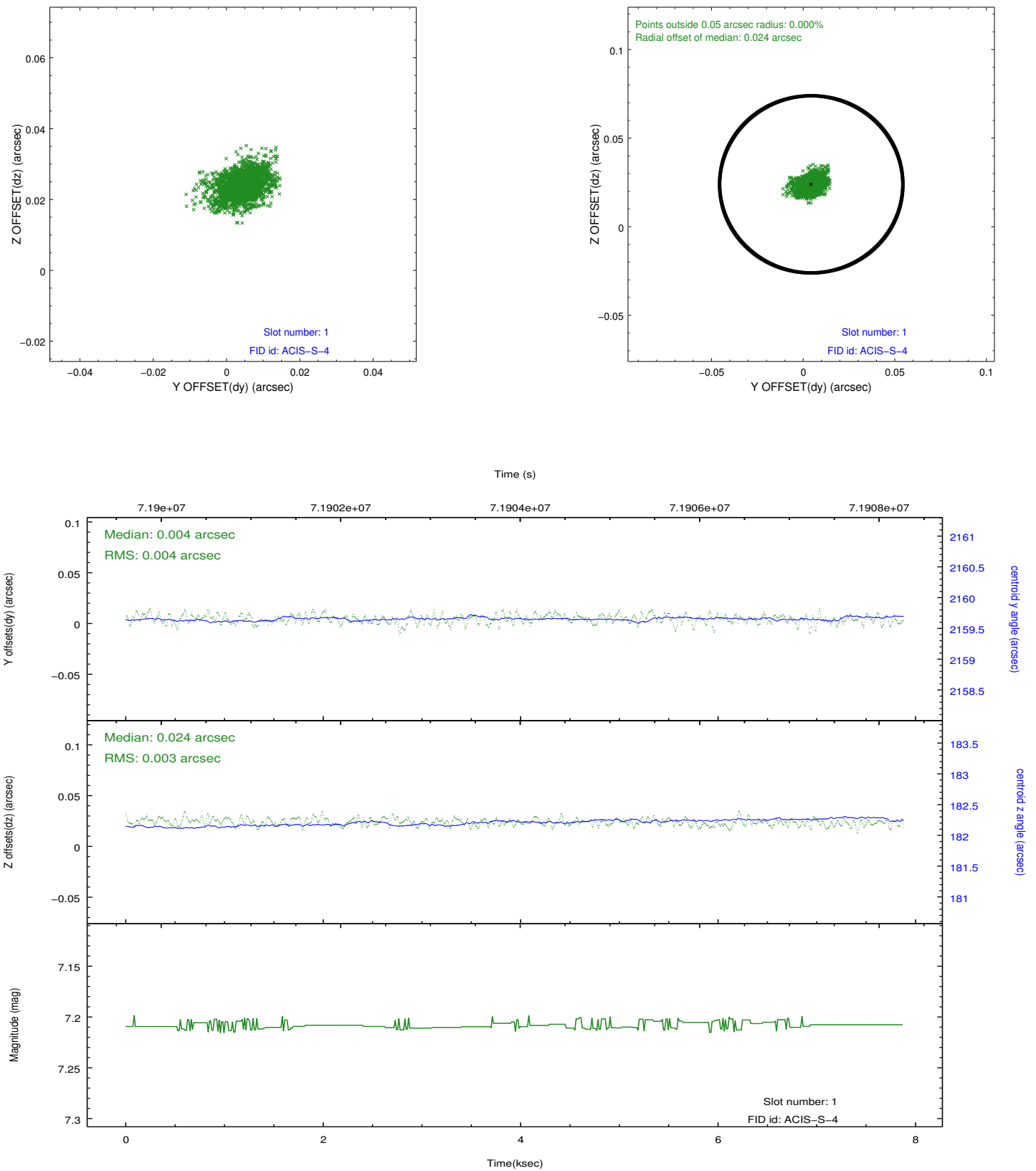


2.5 FID Slots

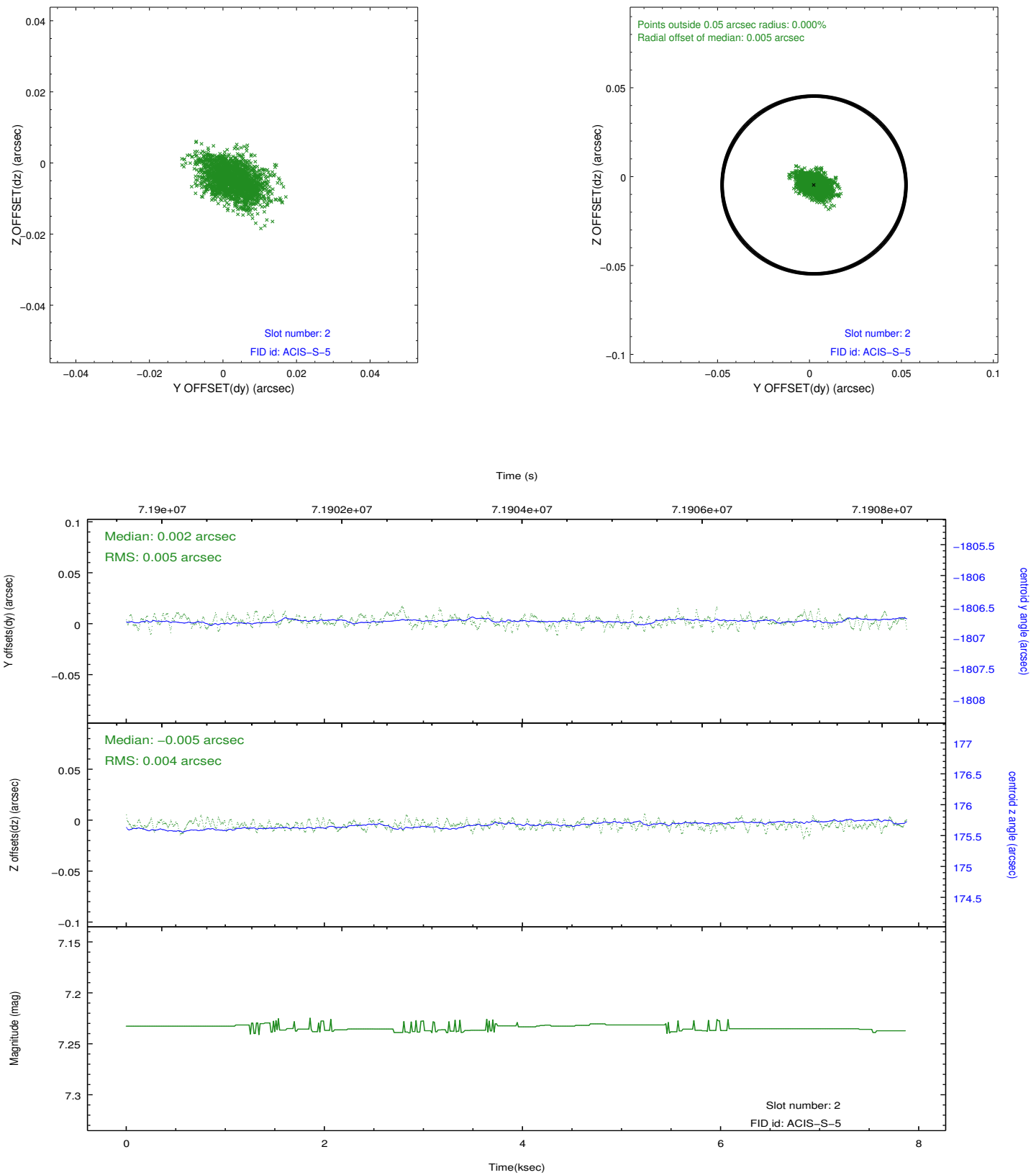
2.5.1 Slot 0



2.5.2 Slot 1



2.5.3 Slot 2



A Summary

A.1 Status

V&V Scientist	Jen Lauer
V&V Date (YYYY-MM-DD)	2012.08.28
V&V Edition	1
V&V Disposition and Status	OK
V&V Charge Time	7.872

A.2 Comments