

# V&V Reference Report

## L2 ASCDS Version : 7.6.10

Observation 413 - L2 Version 001  
Chandra X-Ray Center

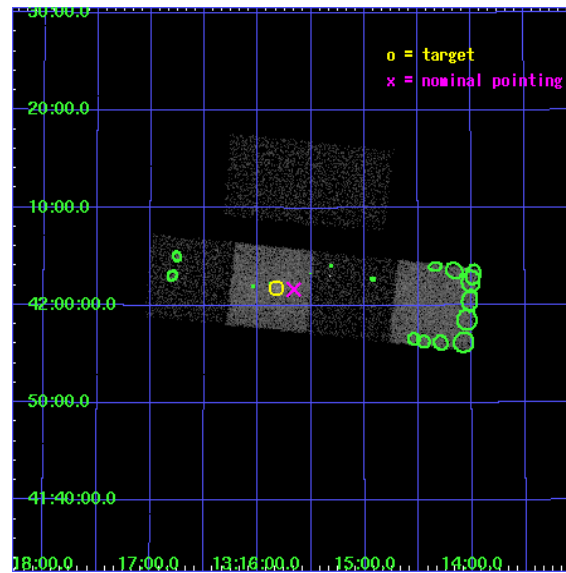
L2 Processing Date : May 15 2007

## Contents

<b>1</b>	<b>Front</b>	<b>2</b>
<b>2</b>	<b>OBI</b>	<b>3</b>
2.1	OBI . . . . .	3
2.1.1	Images . . . . .	3
2.1.2	Bias . . . . .	3
2.1.3	Parameters . . . . .	4
2.1.4	Events . . . . .	4
2.2	Compared Parameters . . . . .	5
2.3	Aspect . . . . .	6
2.4	Star Slots . . . . .	9
2.4.1	Slot 3 . . . . .	9
2.4.2	Slot 4 . . . . .	10
2.4.3	Slot 5 . . . . .	11
2.4.4	Slot 7 . . . . .	12
2.5	FID Slots . . . . .	13
2.5.1	Slot 0 . . . . .	13
2.5.2	Slot 1 . . . . .	14
2.5.3	Slot 2 . . . . .	15
<b>3</b>	<b>Point Sources</b>	<b>16</b>
<b>A</b>	<b>Summary</b>	<b>17</b>
A.1	Status . . . . .	17
A.2	Comments . . . . .	17

# 1 Front

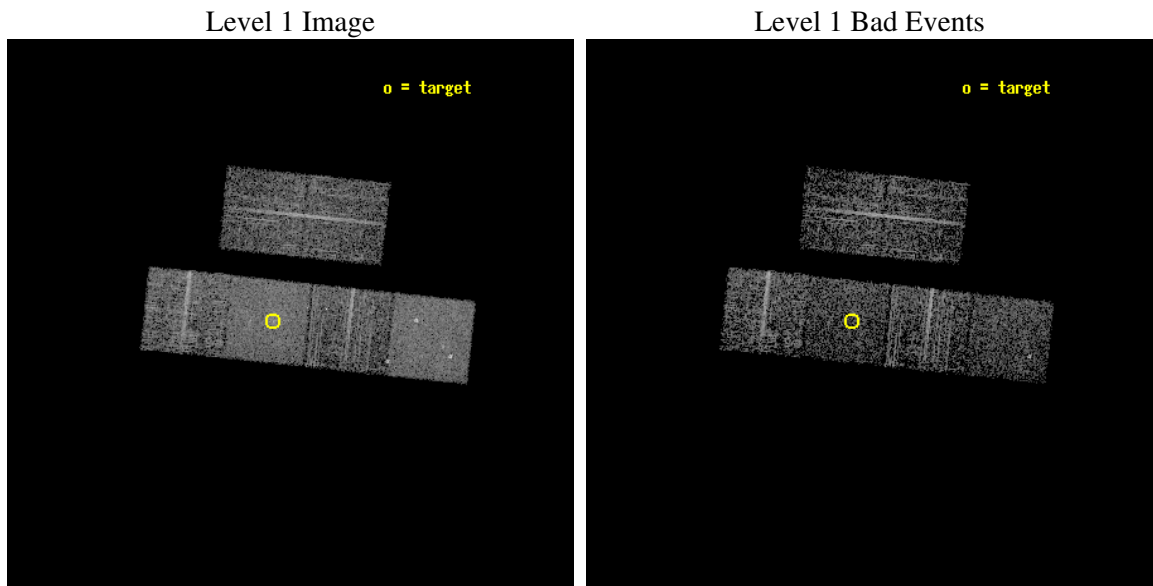
seq_num	700085
obs_id	413
title	LOW-LUMINOSITY ACTIVE GALACTIC NUCLEI IN NEARBY GALAXIES
observer	Prof. Gordon Garmire
object	NGC 5055
dtcycle	0
cycle	P
ra_targ	198.955417
dec_targ	42.029167
ra_nom	198.91547168393
dec_nom	42.027774637211
roll_nom	186.03327884037
revision	4
ontime	2448.0000022799
livetime	2417.0019522424
ontime2	2448.0000022799
ontime3	2448.0000022799
ontime5	2448.0000022799
ontime6	2448.0000022799
ontime7	2448.0000022799
ontime8	2448.0000022799
l2events	32360



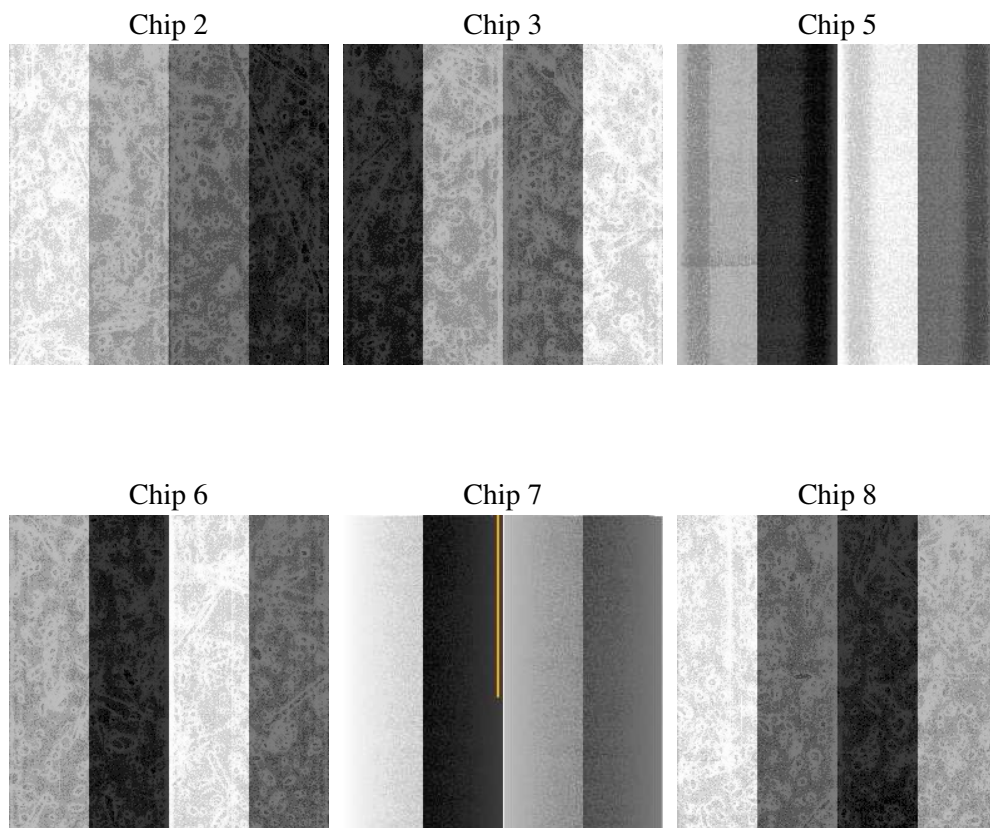
## 2 OBI

### 2.1 OBI

#### 2.1.1 Images



#### 2.1.2 Bias



### 2.1.3 Parameters

obi_num	0
ascdsver	7.6.10
caldbver	3.3.0
date	2007-05-15T12:15:00
revision	4

sched_exp_time	2025.000000
ontime	2448.0000022799
ontime2	2448.0000022799
ontime3	2448.0000022799
ontime5	2448.0000022799
ontime6	2448.0000022799
ontime7	2448.0000022799
ontime8	2448.0000022799
l1events	145056

### 2.1.4 Events

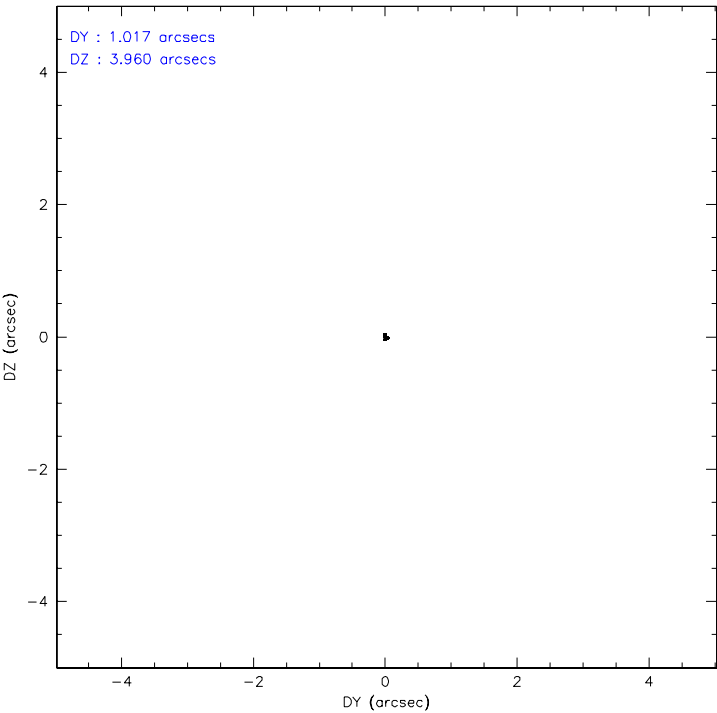
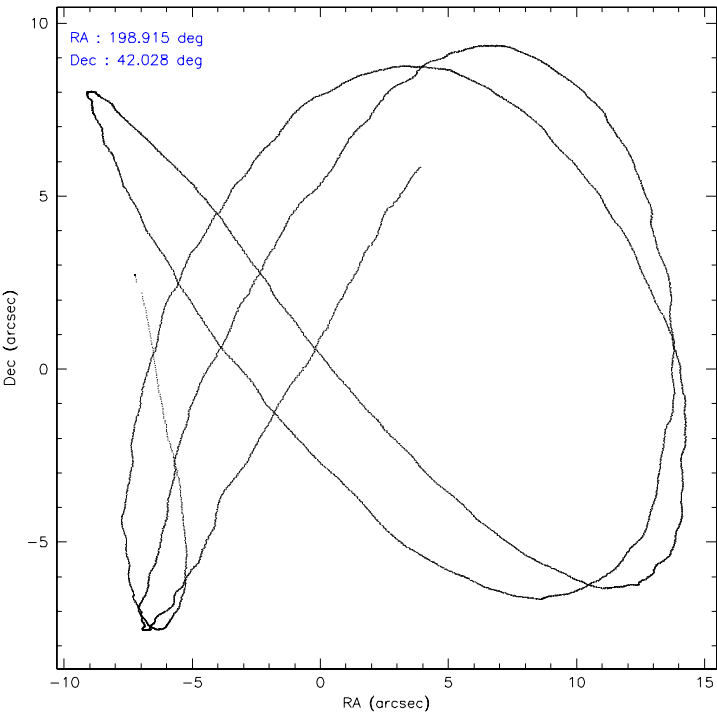
	ccd 2	ccd 3	ccd 5	ccd 6	ccd 7	ccd 8
level 1 events	19752	19652	29664	21566	28005	26417
rejected events	17977	17798	15684	19341	15167	21855
rejected %	91%	90%	52%	89%	54%	82%

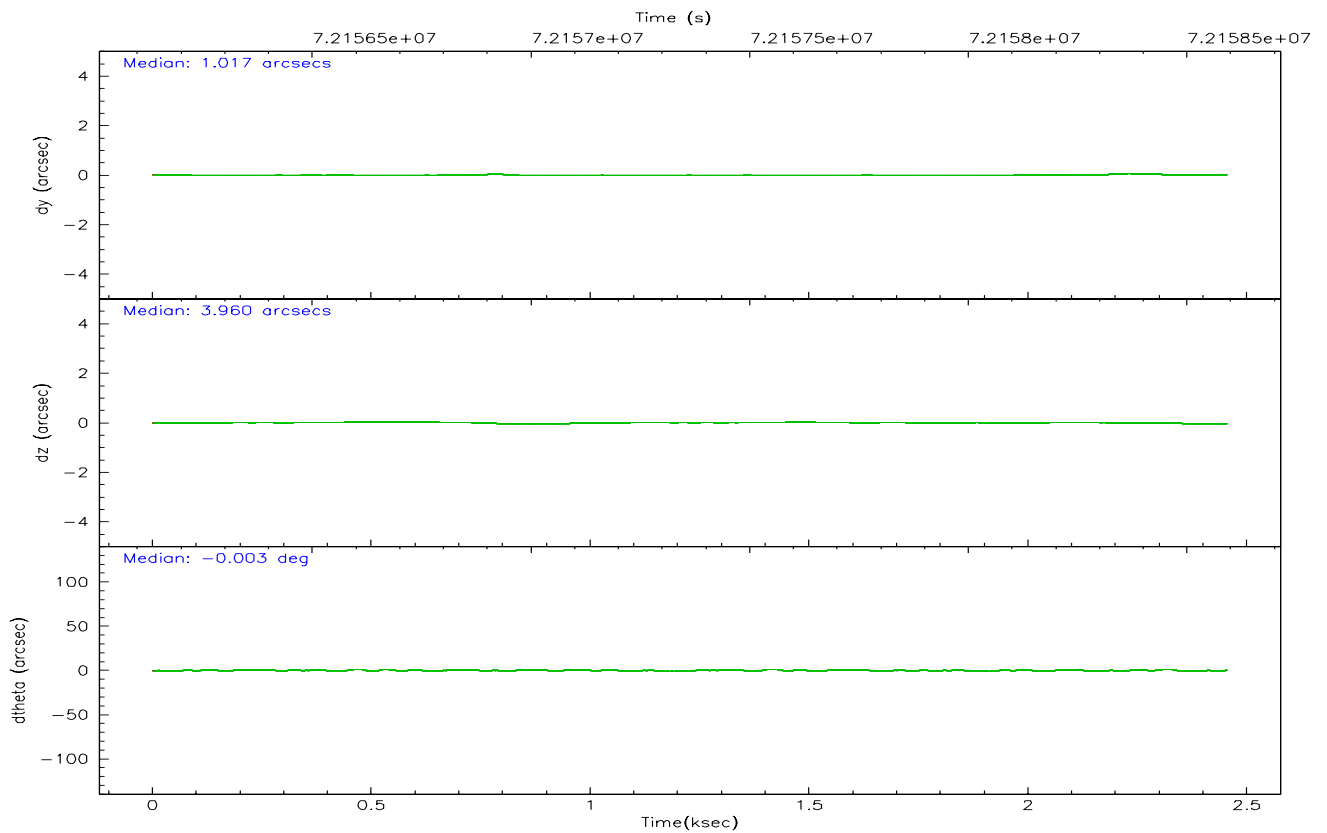
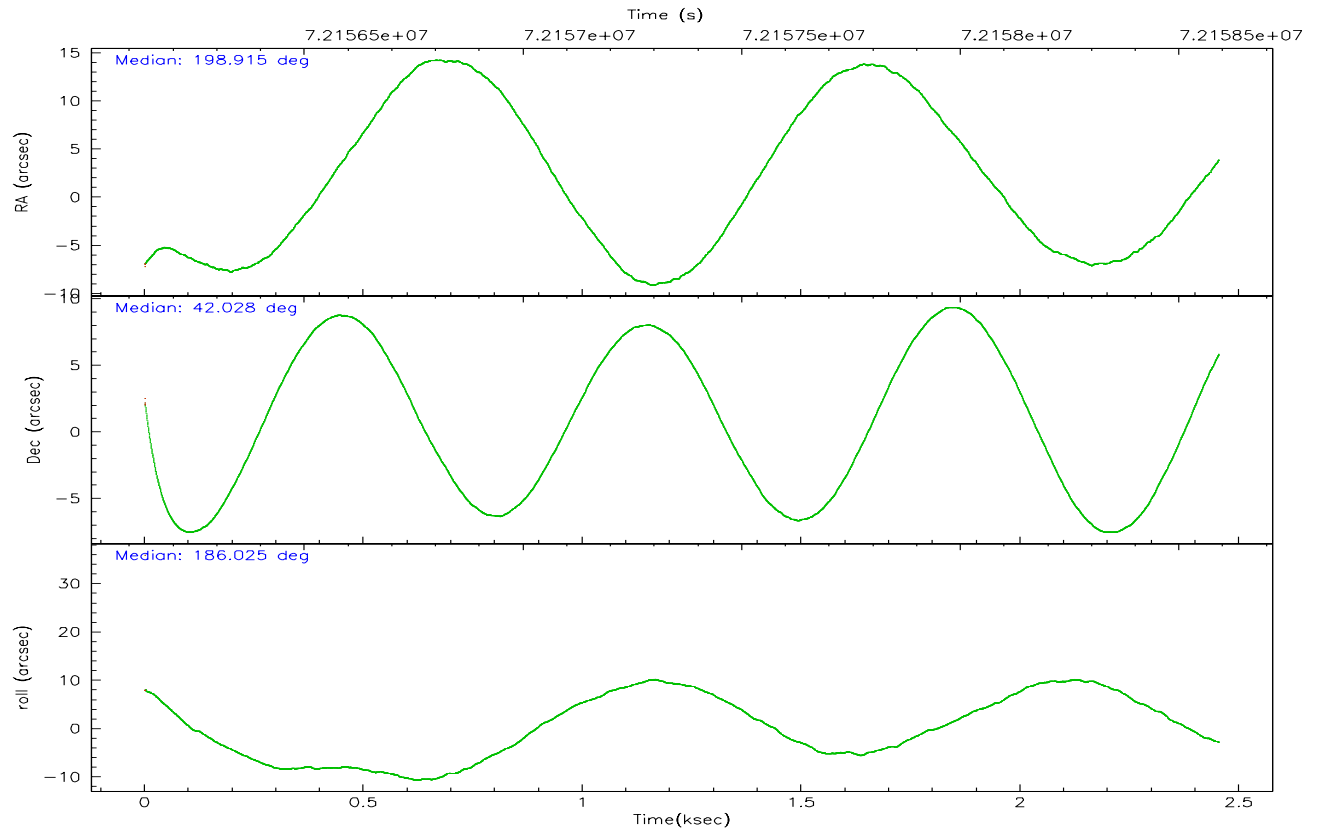
	ccd 2	ccd 3	ccd 5	ccd 6	ccd 7	ccd 8
grade 0 events	872	891	2571	1187	2014	1542
	4%	4%	8%	5%	7%	5%
grade 1 events	12	13	38	13	14	17
	0%	0%	0%	0%	0%	0%
grade 2 events	413	403	4412	450	2853	1070
	2%	2%	14%	2%	10%	4%
grade 3 events	217	229	870	222	1404	627
	1%	1%	2%	1%	5%	2%
grade 4 events	186	208	842	233	1319	517
	0%	1%	2%	1%	4%	1%
grade 5 events	638	628	2220	752	2249	955
	3%	3%	7%	3%	8%	3%
grade 6 events	320	342	6988	409	6698	1432
	1%	1%	23%	1%	23%	5%
grade 7 events	17094	16938	11723	18300	11454	20257
	86%	86%	39%	84%	40%	76%

## 2.2 Compared Parameters

Parameter	Planned	Actual	Parameter	Planned	Actual
Instrument	ACIS	ACIS	Obspar format version number	6	6
Detector	ACIS-235678	ACIS-235678	Obspar file type	PREDICTED	ACTUAL
Grating	NONE	NONE	Obspar update status	NONE	UPDATED
Data mode	FAINT	FAINT	Number of optional ACIS chips dropped	0	0
Observation mode	POINTING	POINTING	On-chip summing requested	N	N
Pointing RA	198.945676	198.9154716839258	Subarray requested	NONE	NONE
Pointing Dec	42.044179	42.02777463721068	Alternating exposures requested	N	N
Pointing Roll	185.856371	186.0332788403719	Primary exposure time	3.200000	3.2
SIM focus pos (mm)	-0.684267	-0.6828225247311905			
SIM defocus (mm)	0	0.001444936568705701			
SIM translation stage pos (mm)	-190.132523	-190.1425803651734			
SIM translation stage offset (mm)	0	0.01005778216563158			
Observation start time	72156567.184000	72155060.395538			
Observation start date	2000-04-15T03:28:23	2000-04-15T03:04:20			
Observation end time	72158592.184000	72159276.733192			
Observation end date	2000-04-15T04:02:08	2000-04-15T04:14:36			
Read mode	TIMED	TIMED			

### 2.3 Aspect





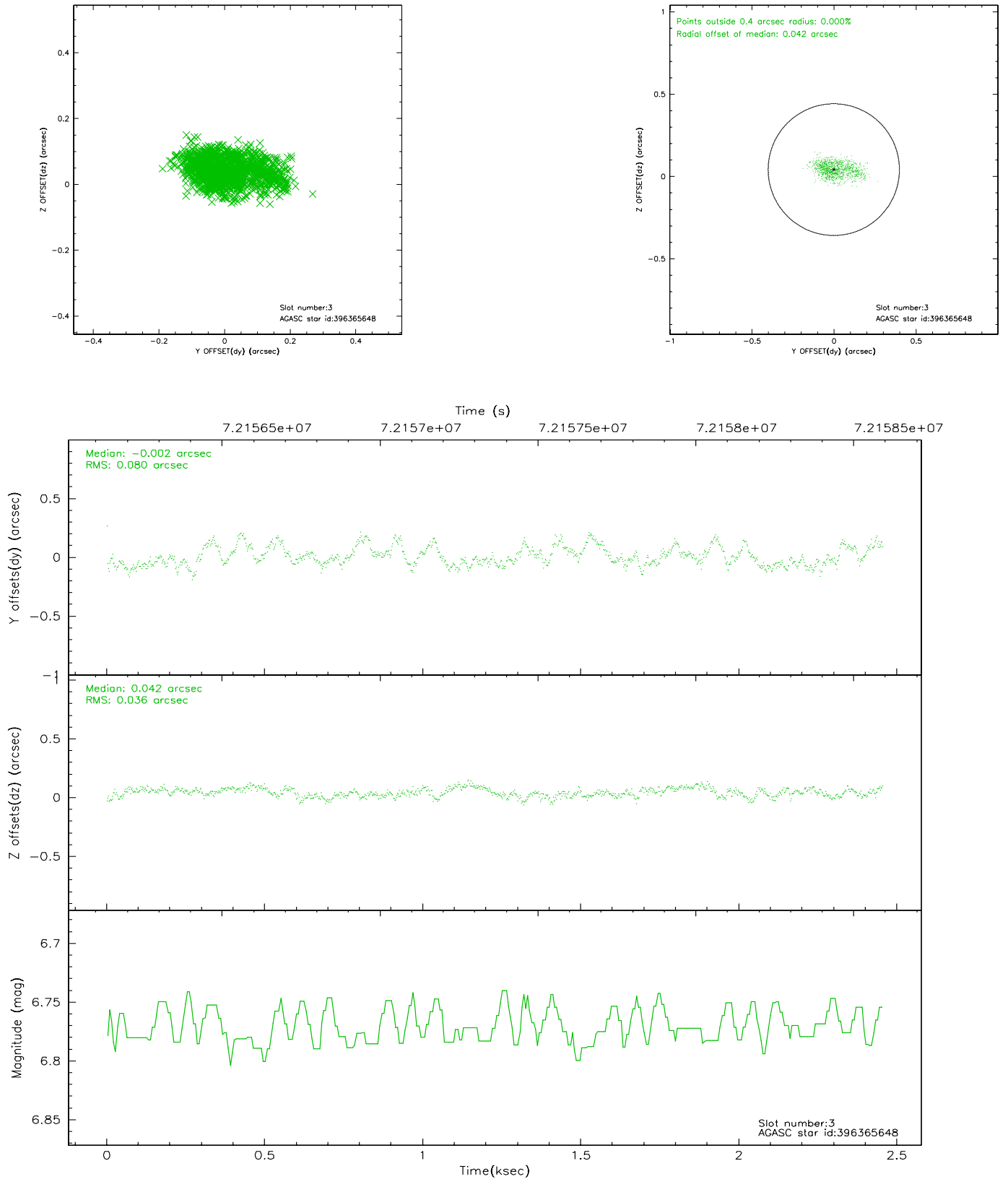
### Slot Statistics

slot	status	id	mag	n_pts	med_dy	med_dz	dr1	dr2	ra	dec	mean_y	mean_z
0	FID	ACIS-S-2	7.11	599	-0.002	0.008	0.007	0.011	0.000000	0.000000	-753.64	-1724.97
1	FID	ACIS-S-4	7.21	599	-0.037	-0.001	0.005	0.007	0.000000	0.000000	2158.45	180.73
2	FID	ACIS-S-5	7.23	599	0.008	0.002	0.007	0.010	0.000000	0.000000	-1803.04	177.49
3	GUIDE	396365648	6.77	1198	-0.002	0.042	0.090	0.164	198.206350	42.626668	1733.72	-2294.41
4	GUIDE	396364144	9.04	1198	-0.002	-0.029	0.081	0.138	199.529559	42.014737	-1541.85	256.98
5	GUIDE	396368544	7.56	1198	-0.057	0.010	0.064	0.100	198.799211	42.266539	305.25	-836.54
6	OMITTED		0.00	0	0.000	0.000	0.000	0.000	0.000000	0.000000	0.00	0.00
7	GUIDE	396374576	10.02	1197	0.050	-0.020	0.138	0.218	199.155228	41.489032	-358.28	2043.95

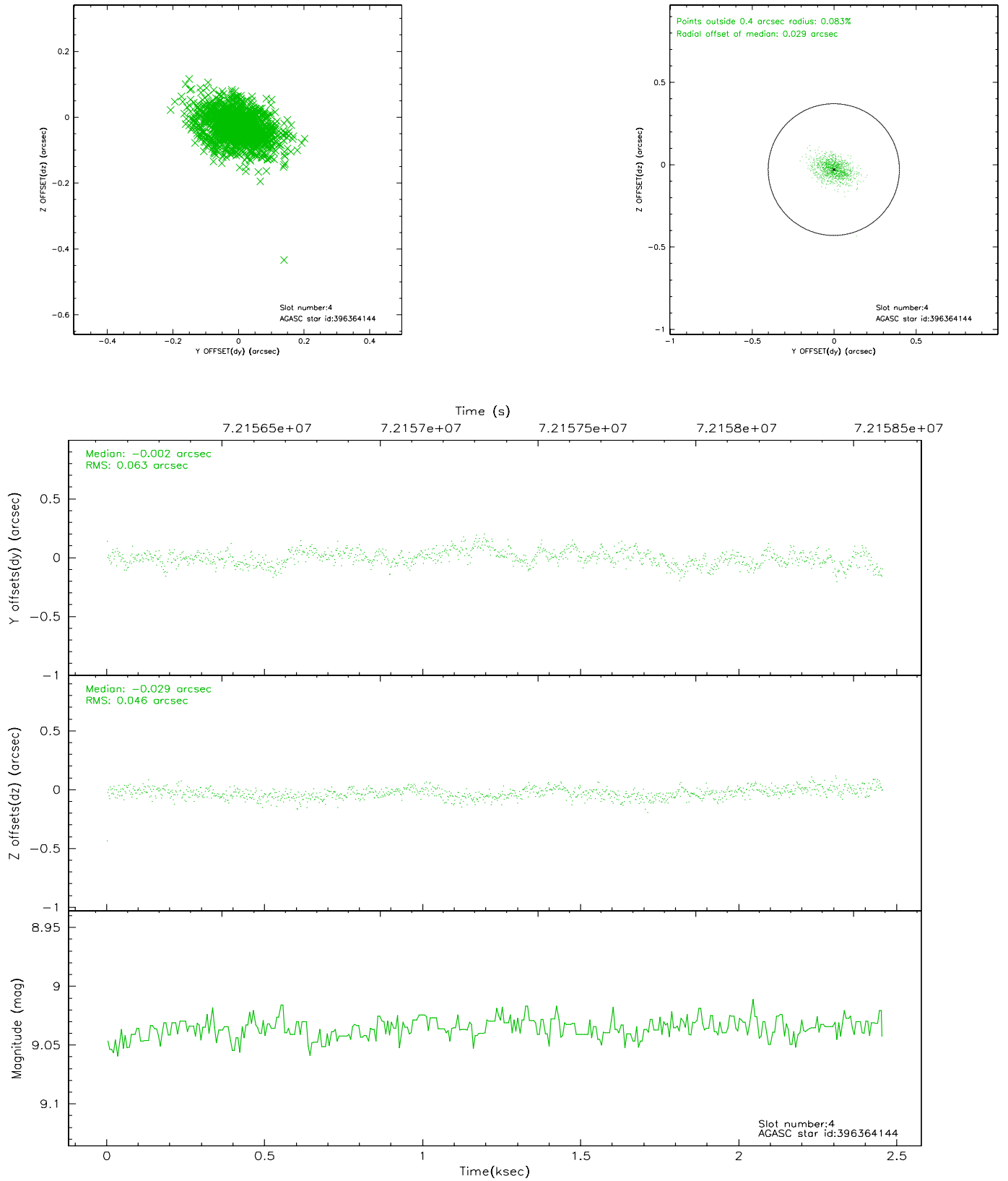


## 2.4 Star Slots

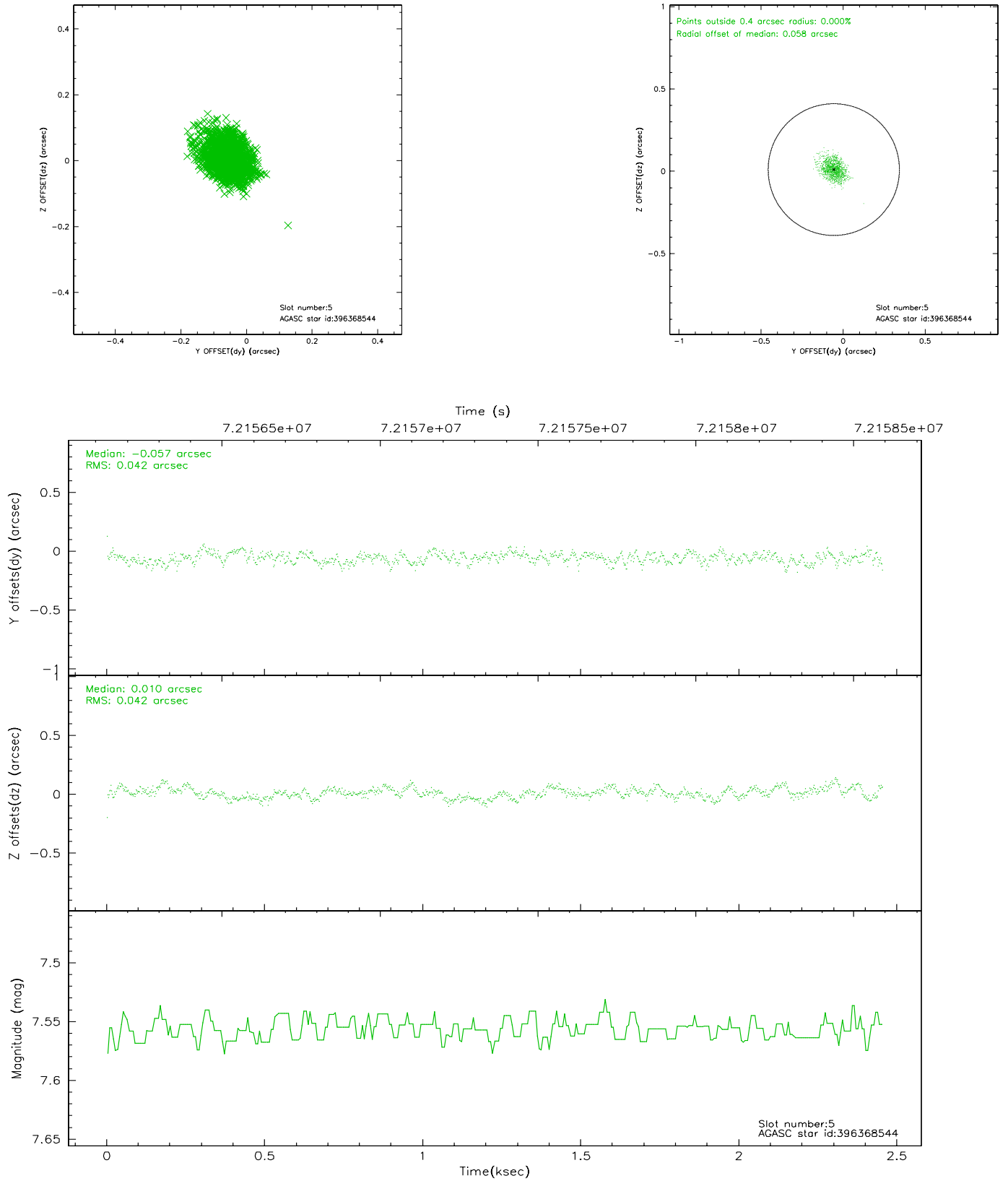
### 2.4.1 Slot 3



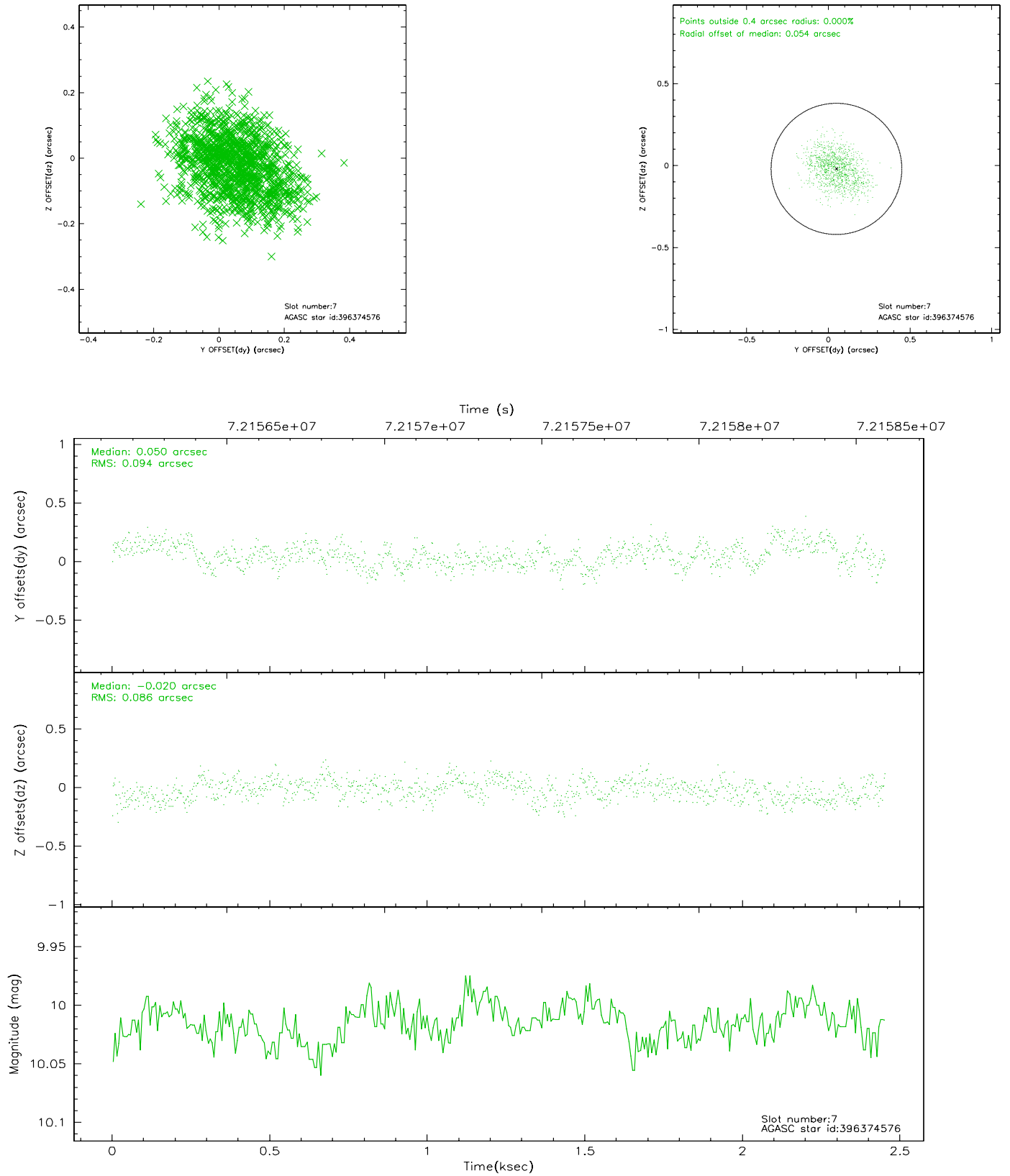
## 2.4.2 Slot 4



### 2.4.3 Slot 5

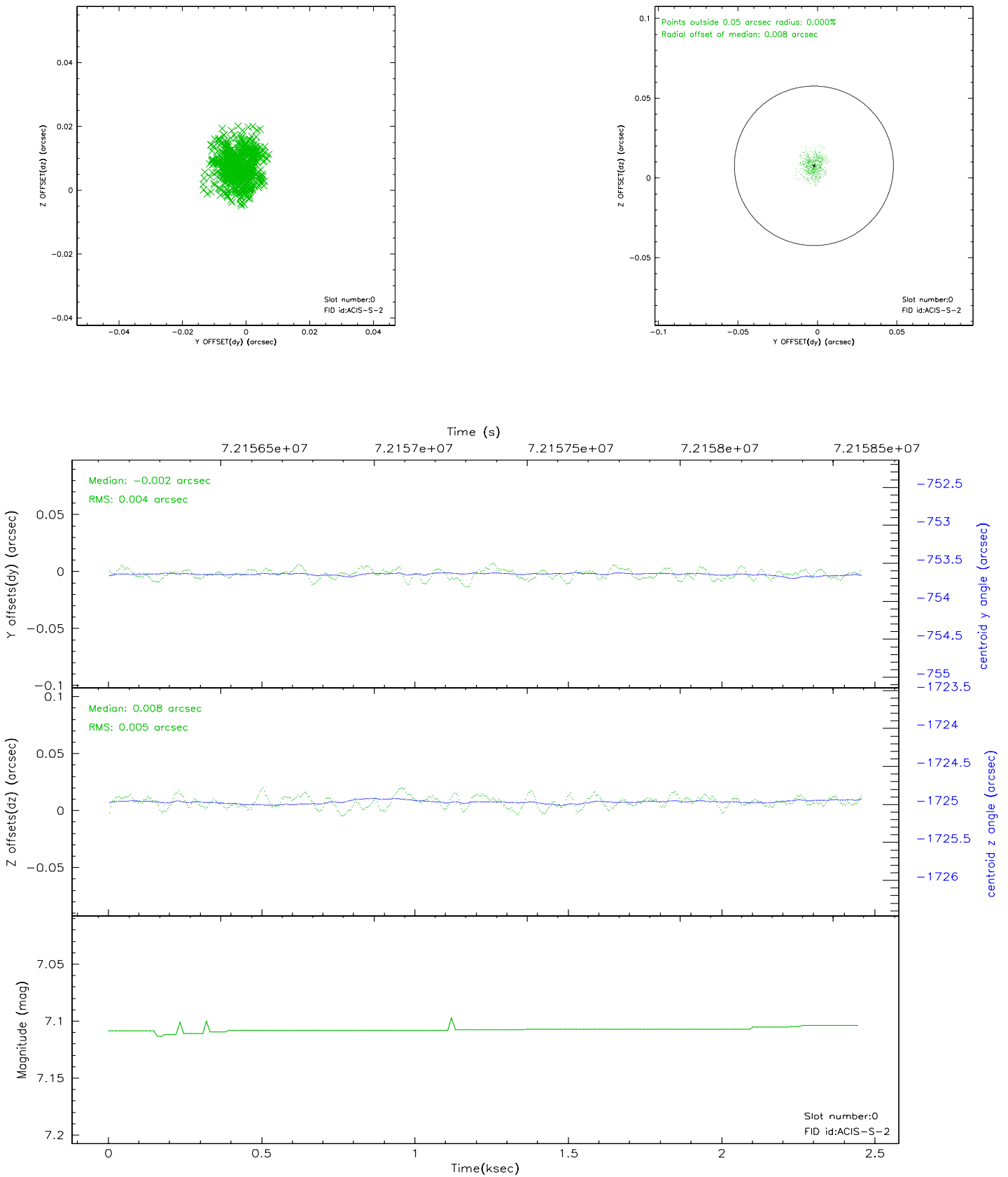


## 2.4.4 Slot 7

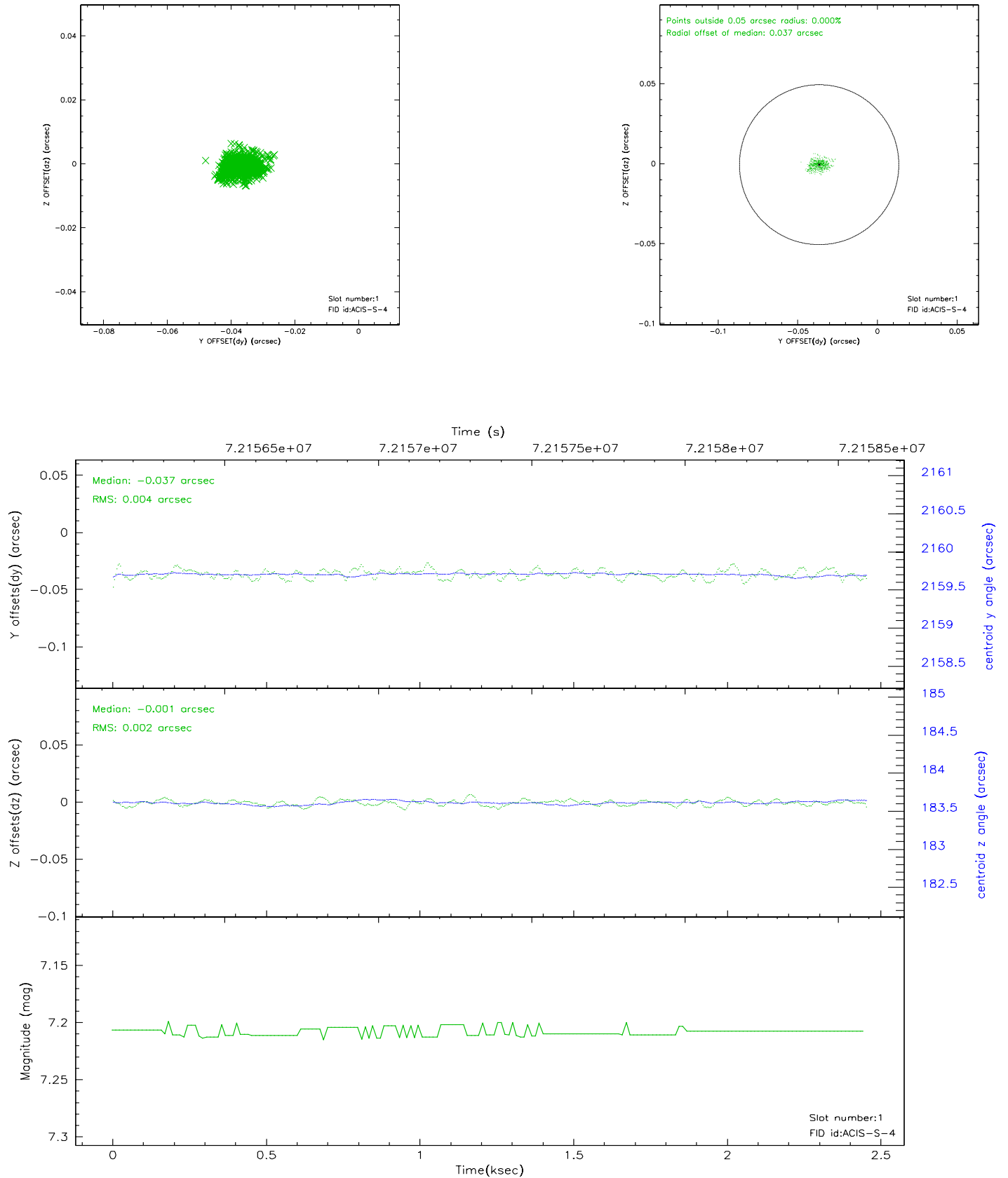


## 2.5 FID Slots

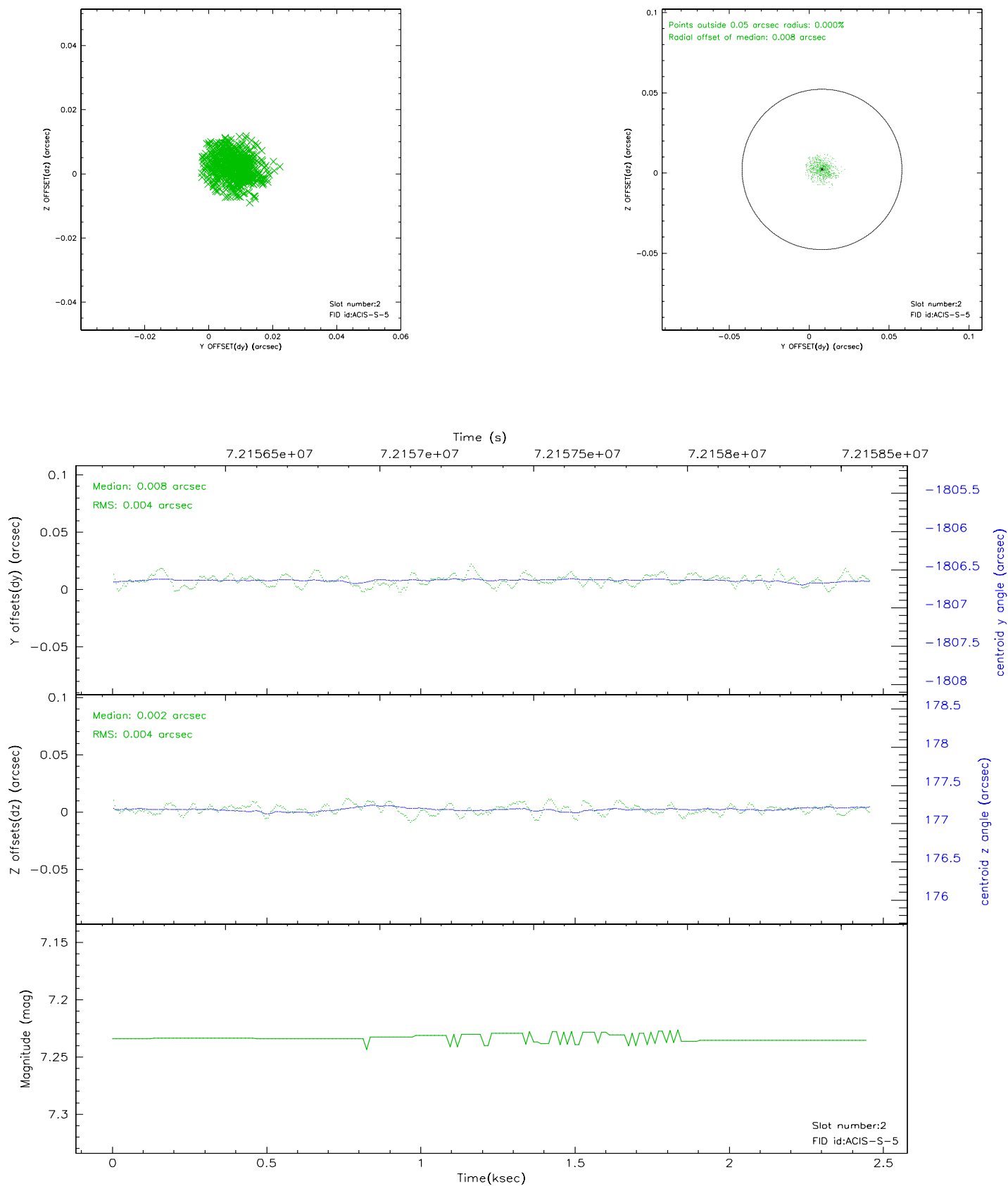
### 2.5.1 Slot 0



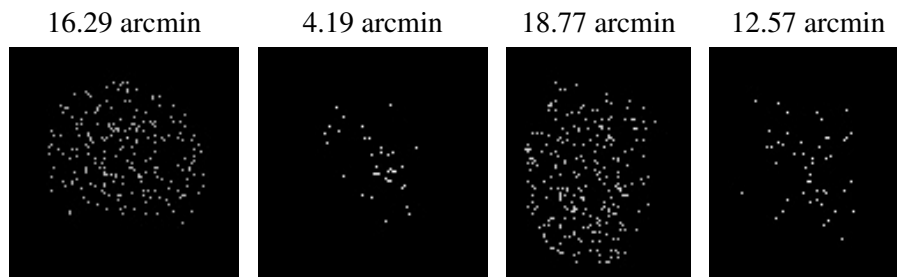
## 2.5.2 Slot 1



### 2.5.3 Slot 2



### 3 Point Sources





# A Summary

## A.1 Status

V&V Scientist	Jen Lauer
V&V Date (YYYY-MM-DD)	2010.10.01
V&V Edition	2
V&V Disposition and Status	OK
V&V Charge Time	2.451

## A.2 Comments

The guide star in slot 6 was manually excluded from the processing due to poor data quality.