

V&V Reference Report

L2 ASCDS Version : 8.4.5

Observation 411 - L2 Version 4
Chandra X-Ray Center

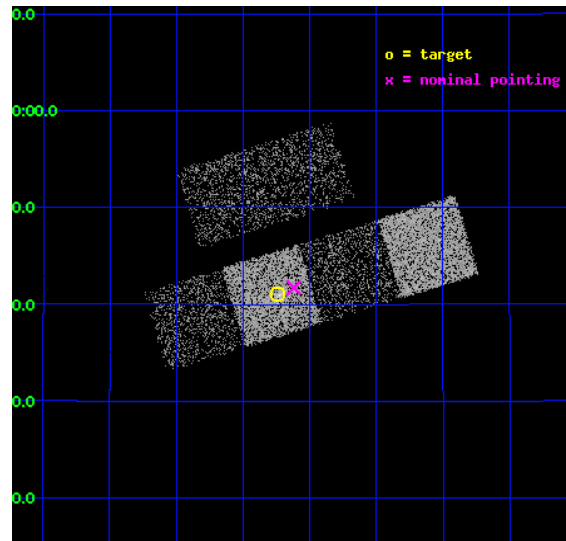
L2 Processing Date : Aug 24 2012

Contents

1	Front	2
2	OBI	3
2.1	OBI	3
2.1.1	Images	3
2.1.2	Bias	3
2.1.3	Parameters	4
2.1.4	Events	4
2.2	Compared Parameters	5
2.3	Aspect	6
2.4	Star Slots	9
2.4.1	Slot 3	9
2.4.2	Slot 4	10
2.4.3	Slot 5	11
2.4.4	Slot 6	12
2.4.5	Slot 7	13
2.5	FID Slots	14
2.5.1	Slot 0	14
2.5.2	Slot 1	15
2.5.3	Slot 2	16
A	Summary	17
A.1	Status	17
A.2	Comments	17

1 Front

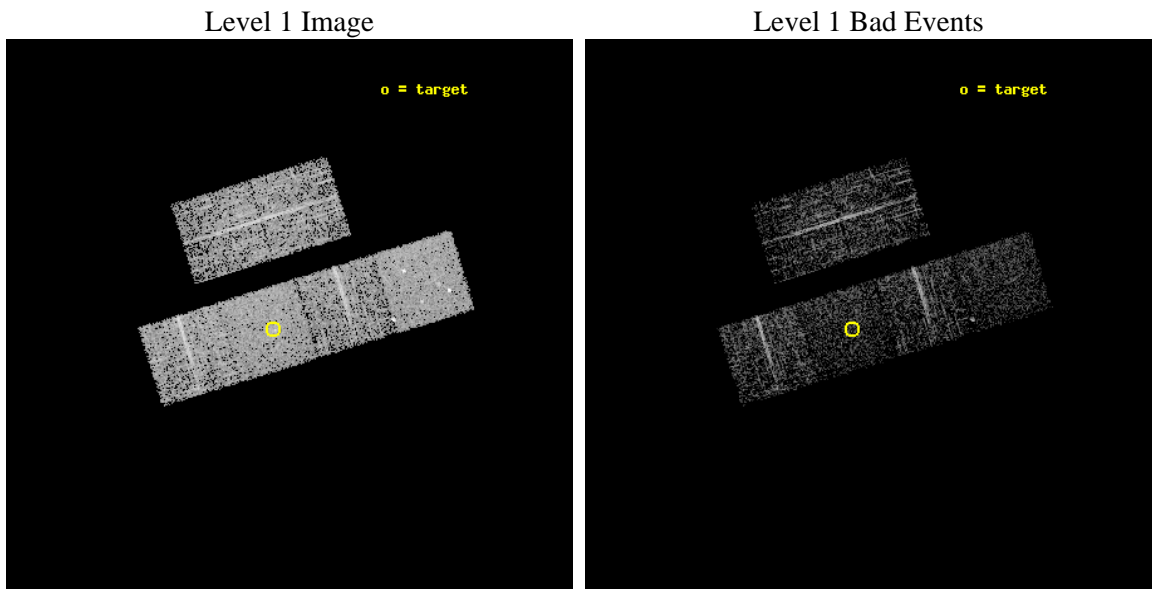
seq_num	700083	Sequence number
obs_id	411	Observation id
title	LOW-LUMINOSITY ACTIVE GALACTIC NUCLEI IN NEARBY GALAXIES	Proposal
observer	Professor Gordon Garmire	Principal investigator
object	NGC 4826	Source name
dtcycle	0	
cycle	P	events from which exps? Prim/Second/Both
ra_targ	194.184167	Observer's specified target RA [deg]
dec_targ	21.684722	Observer's specified target Dec [deg]
ra_nom	194.1546649522	Nominal RA [deg]
dec_nom	21.695118057666	Nominal Dec [deg]
roll_nom	162.80346011956	Nominal Roll [deg]
revision	4	Processing version of data
ontime	1820.8000016809	Sum of GTIs [s]
livetime	1797.7439357054	Livetime [s]
ontime2	1820.8000016809	Sum of GTIs [s]
ontime3	1820.8000016809	Sum of GTIs [s]
ontime5	1820.8000016809	Sum of GTIs [s]
ontime6	1820.8000016809	Sum of GTIs [s]
ontime7	1820.8000016809	Sum of GTIs [s]
ontime8	1820.764696911	Sum of GTIs [s]
l2events	18285	Number of level 2 events



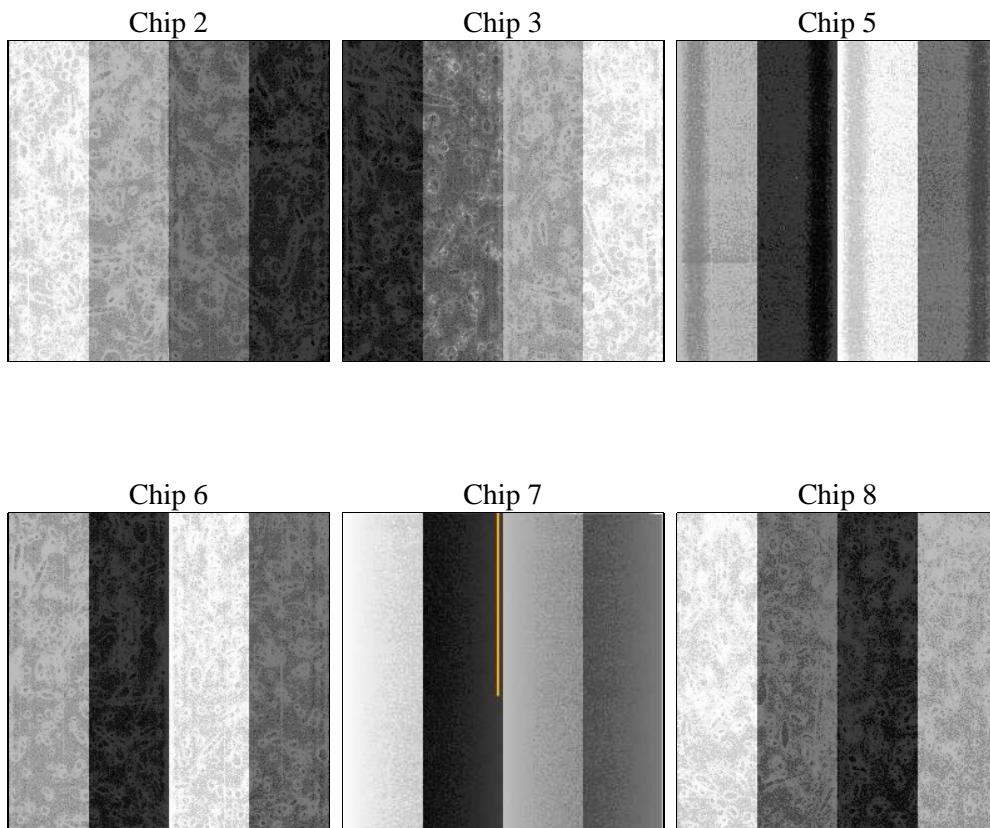
2 OBI

2.1 OBI

2.1.1 Images



2.1.2 Bias



2.1.3 Parameters

obi_num	0	Obi number	sched_exp_time	2100.000000	[s] Scheduled observation exposure time
ascdsver	8.4.5	Processing system revision	ontime	1820.8000016809	Sum of GTIs [s]
caldsver	4.5.1.1	 	ontime2	1820.8000016809	Sum of GTIs [s]
date	2012-08-25T02:12:00	Date and time of file creation	ontime3	1820.8000016809	Sum of GTIs [s]
revision	4	Processing version of data	ontime5	1820.8000016809	Sum of GTIs [s]
			ontime6	1820.8000016809	Sum of GTIs [s]
			ontime7	1820.8000016809	Sum of GTIs [s]
			ontime8	1820.764696911	Sum of GTIs [s]
			l1events	88804	Number of level 1 events

2.1.4 Events

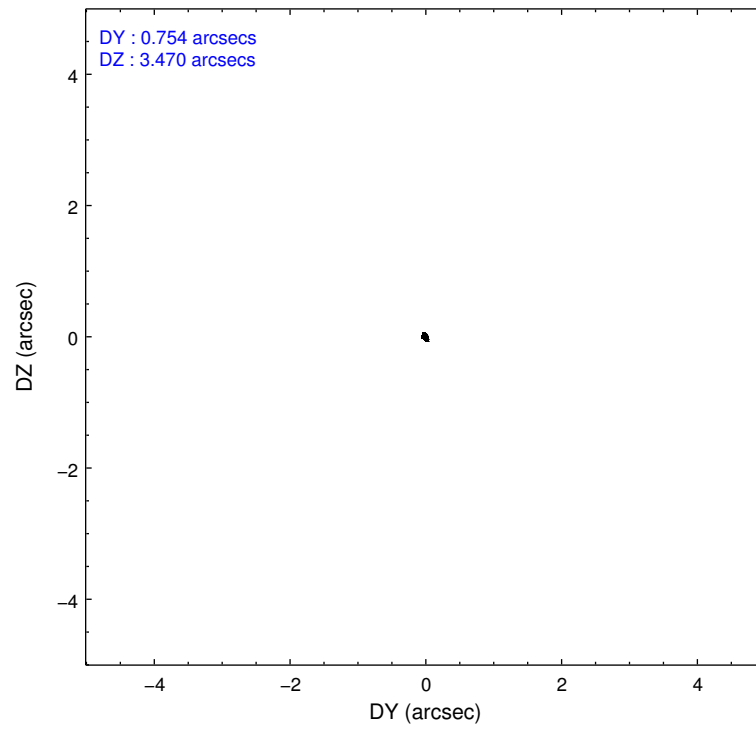
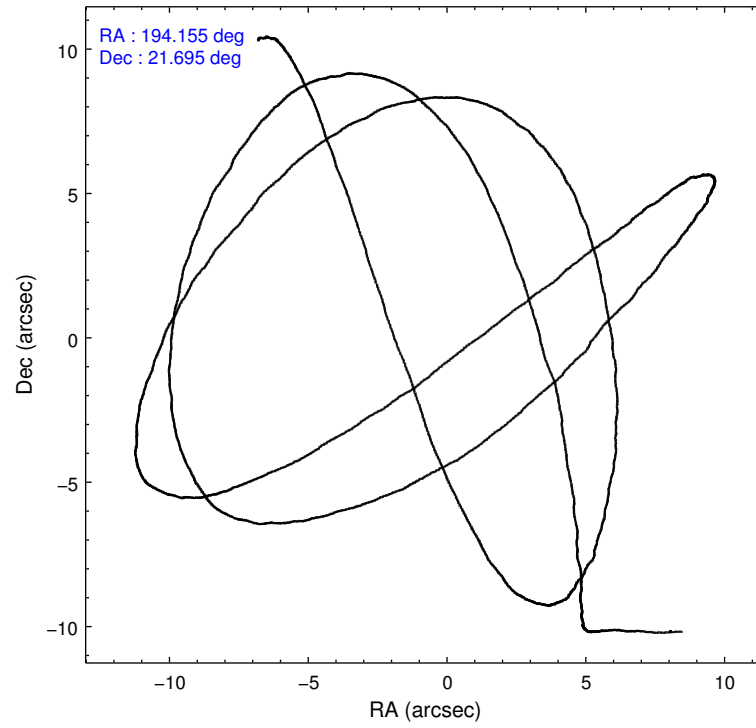
	ccd 2	ccd 3	ccd 5	ccd 6	ccd 7	ccd 8
level 1 events	13759	13172	17262	13147	15336	16128
rejected events	12375	11812	8753	11709	8734	13446
rejected %	89%	89%	50%	89%	56%	83%

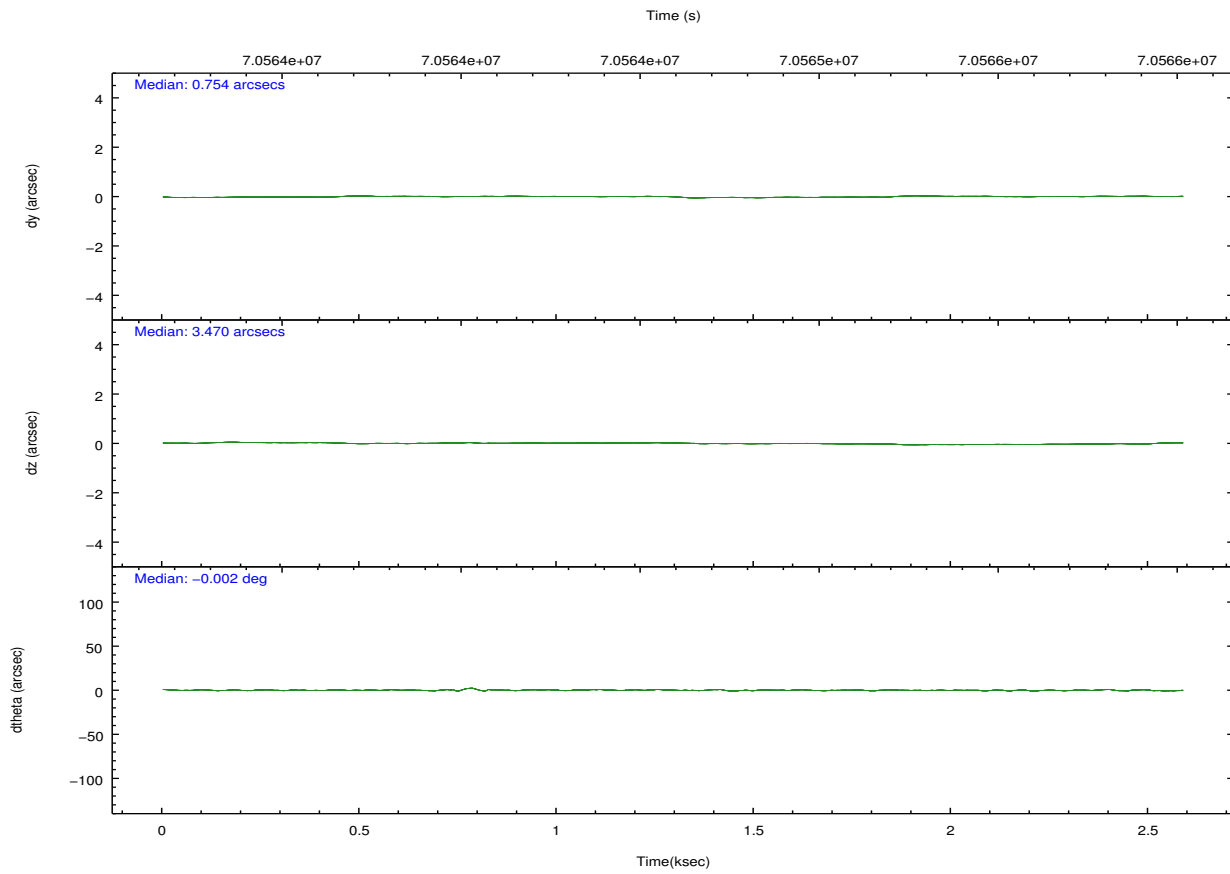
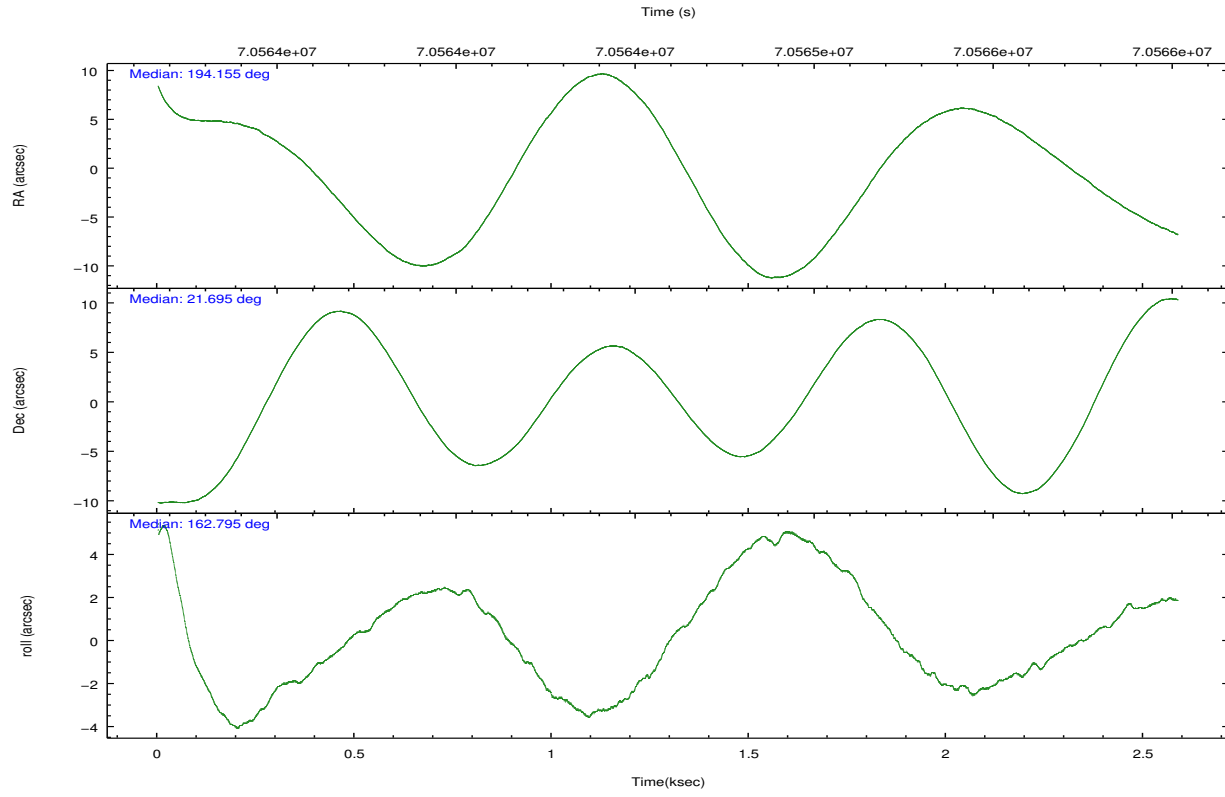
	ccd 2	ccd 3	ccd 5	ccd 6	ccd 7	ccd 8
grade 0 events	587	593	1362	588	764	927
	4%	4%	7%	4%	4%	5%
grade 1 events	7	8	102	8	18	12
	0%	0%	0%	0%	0%	0%
grade 2 events	287	250	2493	302	1288	542
	2%	1%	14%	2%	8%	3%
grade 3 events	136	143	370	124	670	298
	0%	1%	2%	0%	4%	1%
grade 4 events	132	143	326	147	627	267
	0%	1%	1%	1%	4%	1%
grade 5 events	399	440	1309	502	1493	569
	2%	3%	7%	3%	9%	3%
grade 6 events	246	234	3979	277	3262	653
	1%	1%	23%	2%	21%	4%
grade 7 events	11965	11361	7321	11199	7214	12860
	86%	86%	42%	85%	47%	79%

2.2 Compared Parameters

Parameter	Planned	Actual	Parameter	Planned	Actual
Instrument	ACIS	ACIS	Obspar format version number	7	7
Detector	ACIS-235678	ACIS-235678	Obspar file type	PREDICTED	ACTUAL
Grating	NONE	NONE	Obspar update status	NONE	UPDATED
Data mode	FAINT	FAINT	Number of optional ACIS chips dropped	0	0
Observation mode	POINTING	POINTING	On-chip summing requested	N	N
[deg] Pointing RA	194.183379	194.1546649522005	Subarray requested	NONE	NONE
[deg] Pointing Dec	21.701361	21.69511805766611	Alternating exposures requested	N	N
[deg] Pointing Roll	162.636180	162.8034601195615	[s] Primary exposure time	0.000000	3.2
[mm] SIM focus pos	-0.684267	-0.6828225247311905			
[mm] SIM defocus	0	0.001444936568705701			
[mm] SIM translation stage pos	-190.132523	-190.1425803651734			
[mm] SIM translation stage offset	0	0.01005778216563158			
[s] Observation start time (MET)	70563785.184000	70562794.587219			
Observation start date	2000-03-27T17:02:01	2000-03-27T16:46:34			
[s] Observation end time (MET)	70565885.184000	70566718.28736199			
Observation end date	2000-03-27T17:37:01	2000-03-27T17:51:58			
Read mode	TIMED	TIMED			

2.3 Aspect



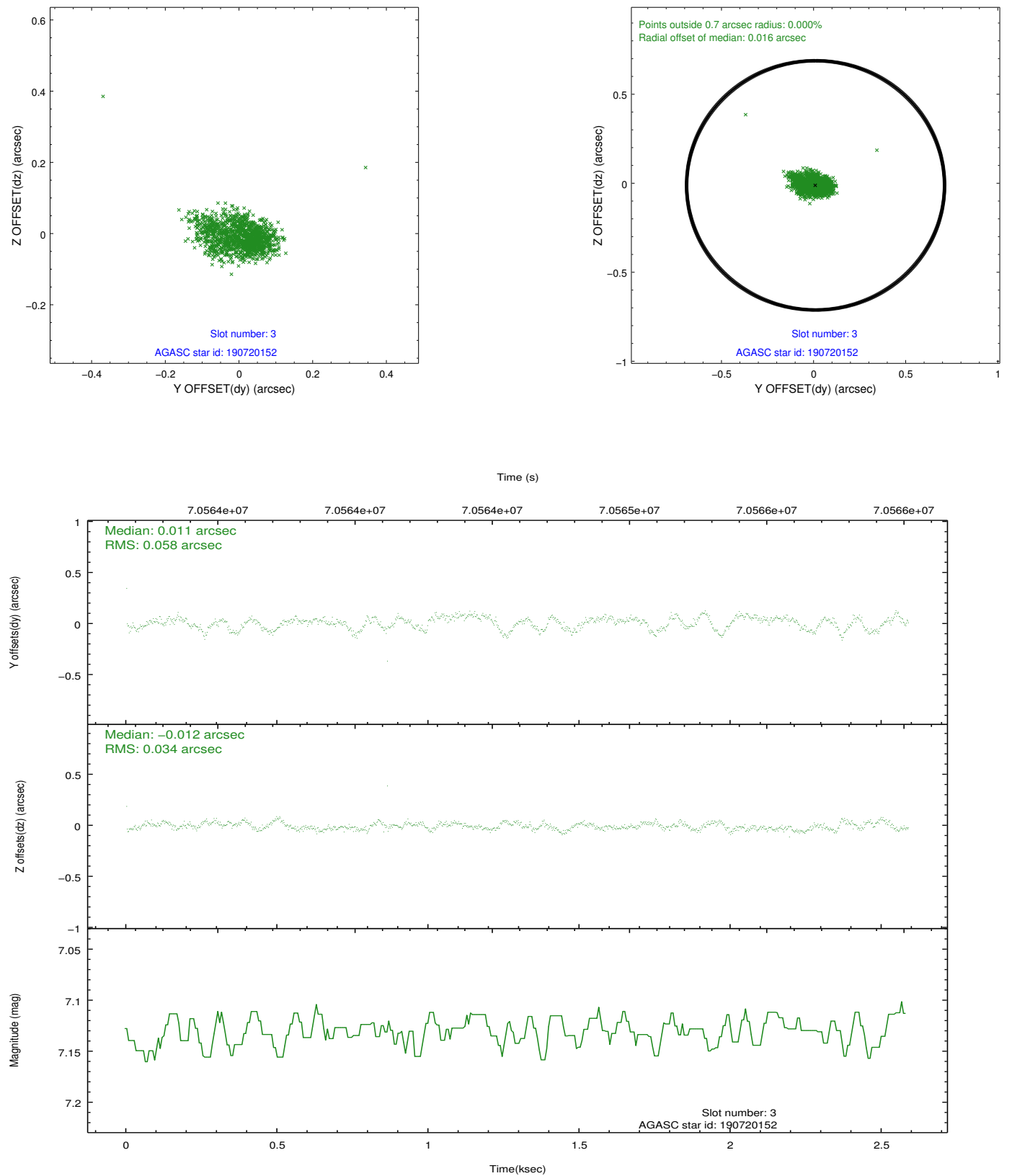


Slot Statistics

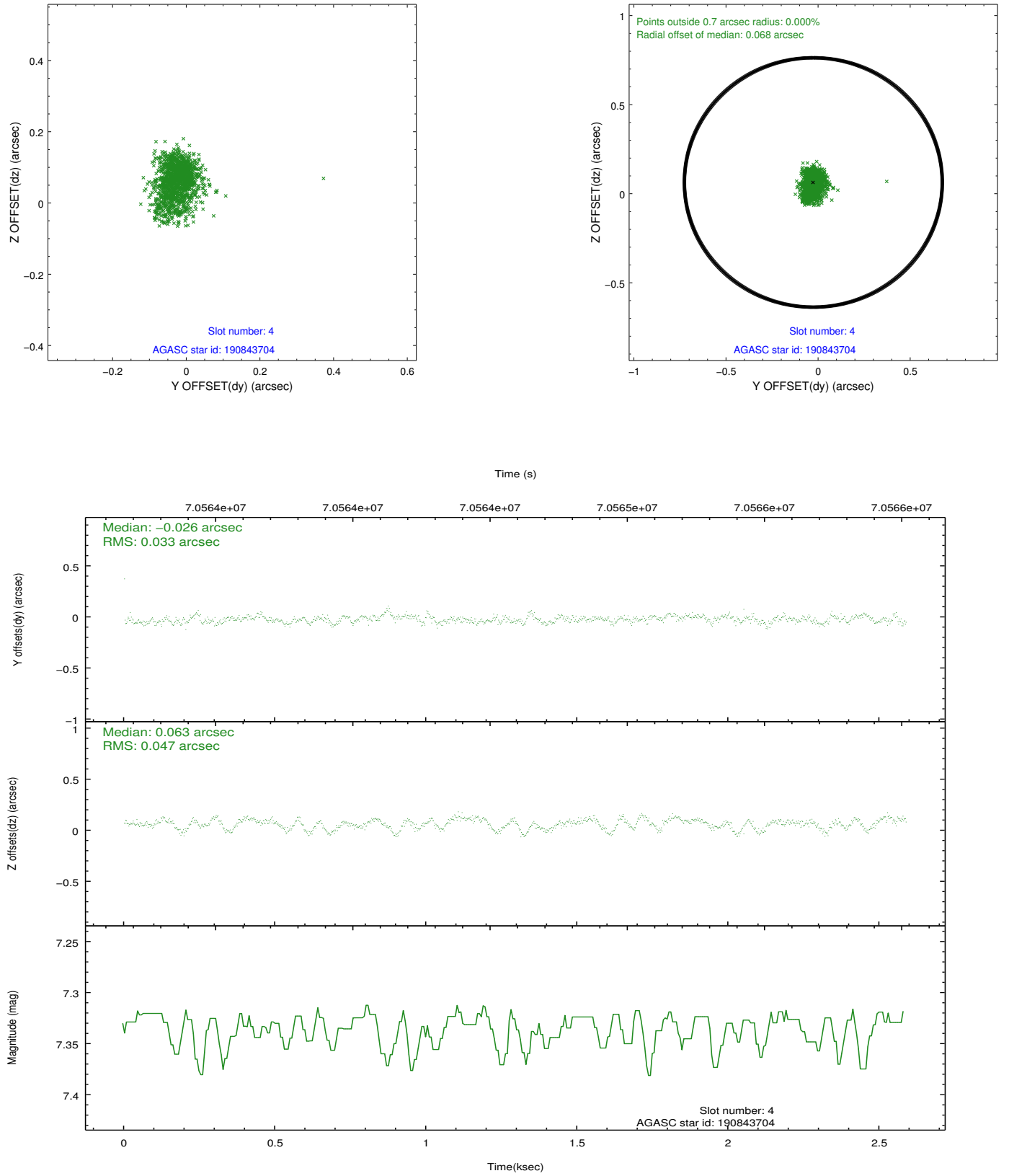
slot	status	id	mag	n_pts	med_dy	med_dz	dr1	dr2	ra	dec	mean_y	mean_z
0	FID	ACIS-S-2	7.11	631	-0.004	-0.016	0.007	0.011	0.000000	0.000000	-753.39	-1724.48
1	FID	ACIS-S-4	7.21	631	0.009	0.006	0.006	0.012	0.000000	0.000000	2158.84	181.37
2	FID	ACIS-S-5	7.24	631	-0.036	0.019	0.007	0.012	0.000000	0.000000	-1802.98	178.02
3	GUIDE	190720152	7.13	1263	0.011	-0.012	0.068	0.115	193.666732	22.107929	2083.89	-884.64
4	GUIDE	190843704	7.33	1263	-0.026	0.063	0.059	0.101	194.670543	22.042885	-1180.59	-1661.32
5	GUIDE	190845144	8.87	1263	-0.014	0.098	0.091	0.143	194.692633	22.213679	-1067.88	-2270.36
6	GUIDE	190720240	9.41	1263	-0.047	-0.138	0.100	0.161	194.138618	21.012047	-596.88	2411.86
7	GUIDE	190719688	9.68	1260	0.076	-0.016	0.086	0.143	193.909737	22.180853	1387.32	-1373.44

2.4 Star Slots

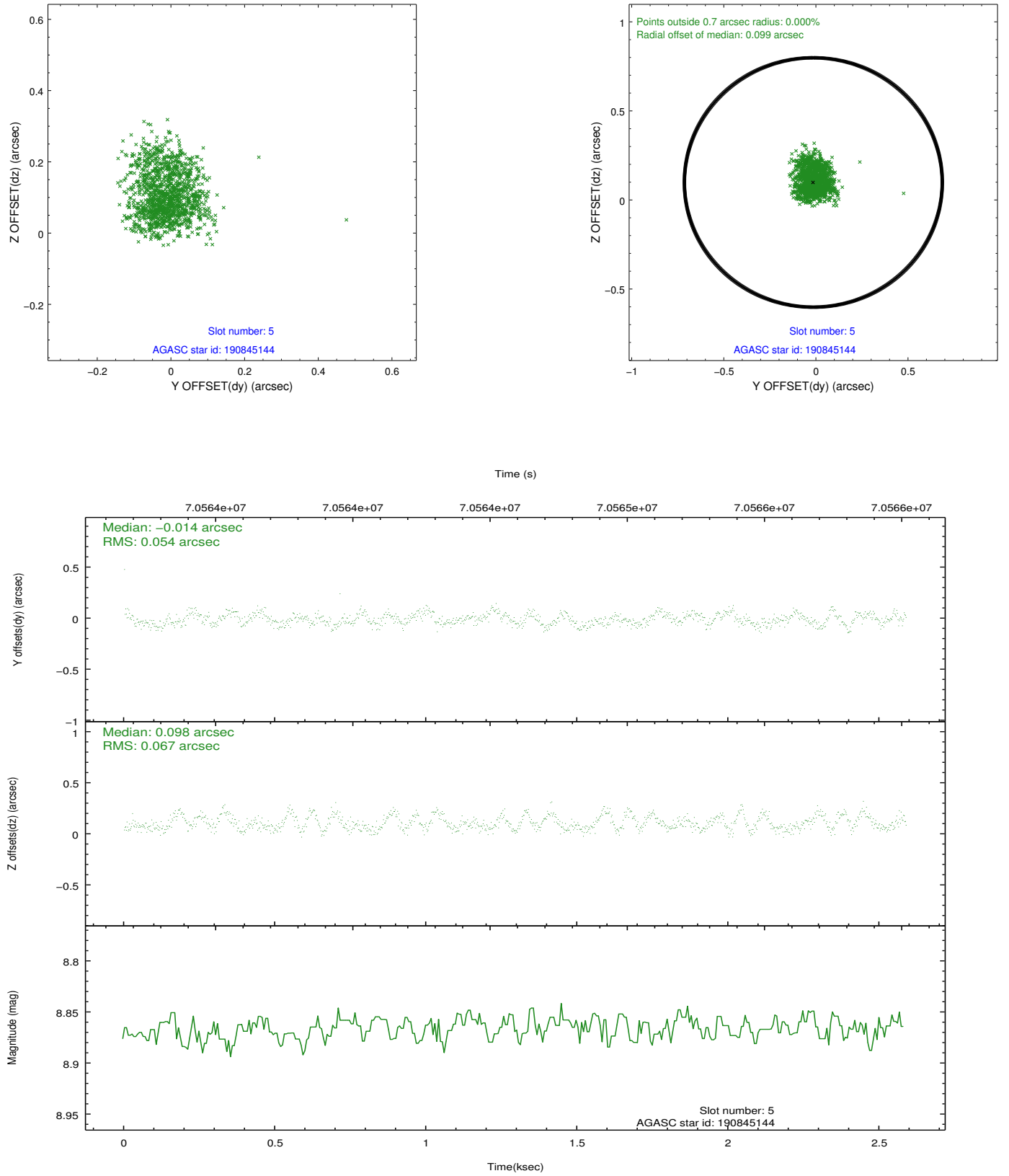
2.4.1 Slot 3



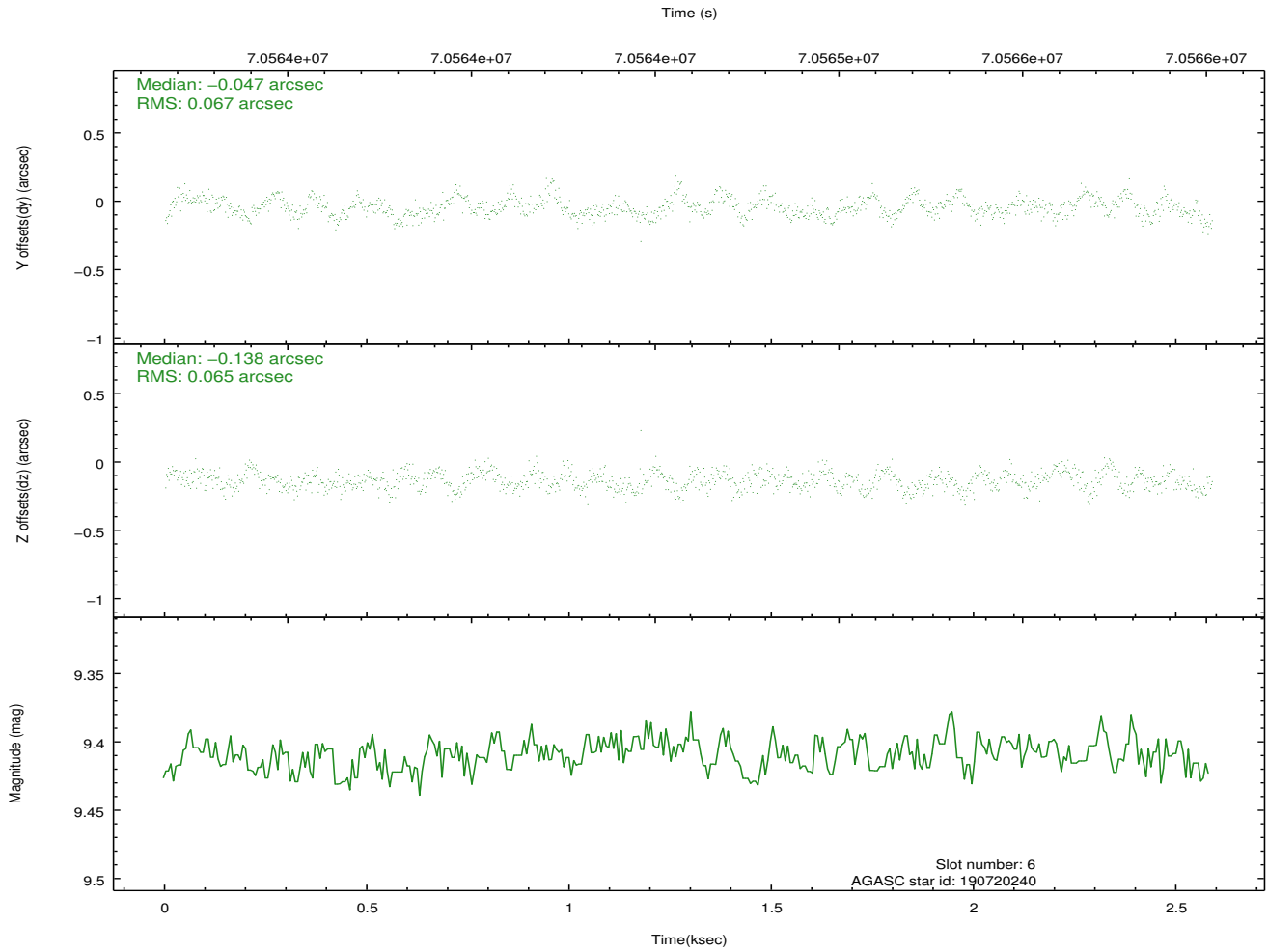
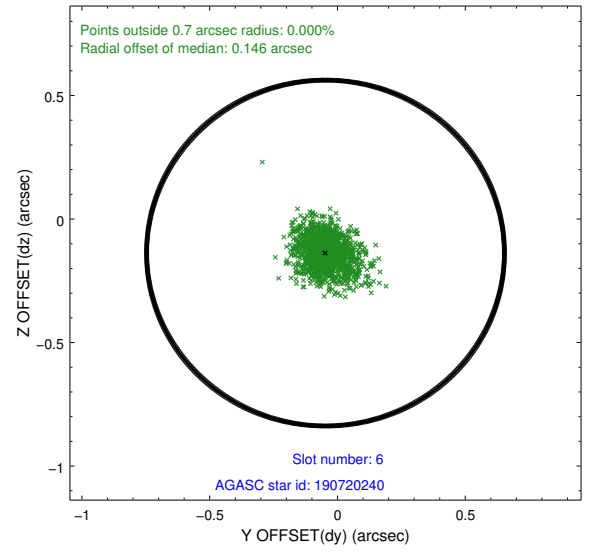
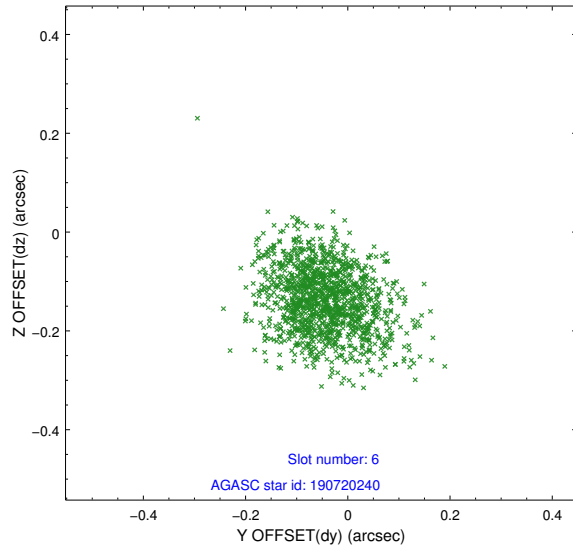
2.4.2 Slot 4



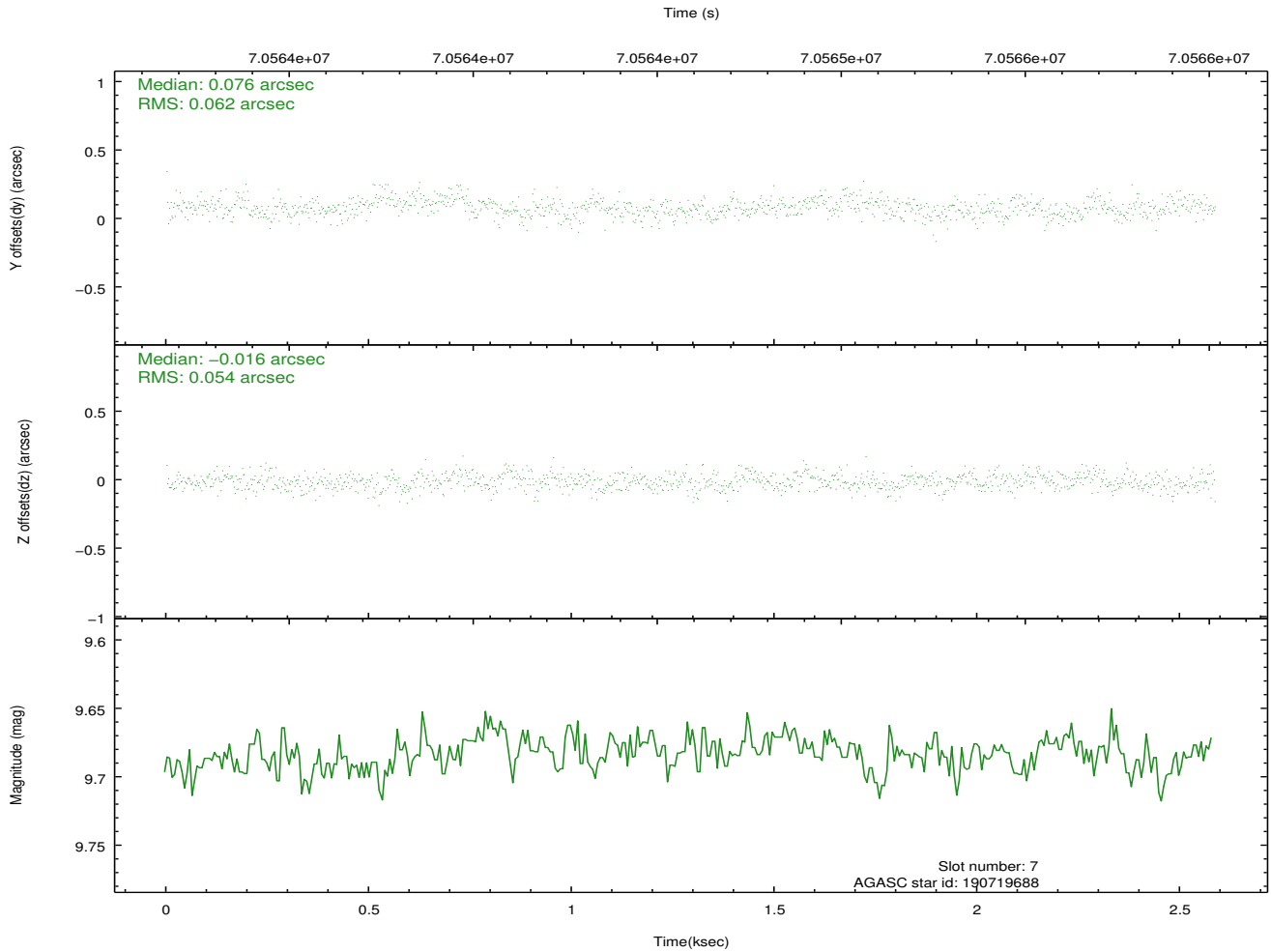
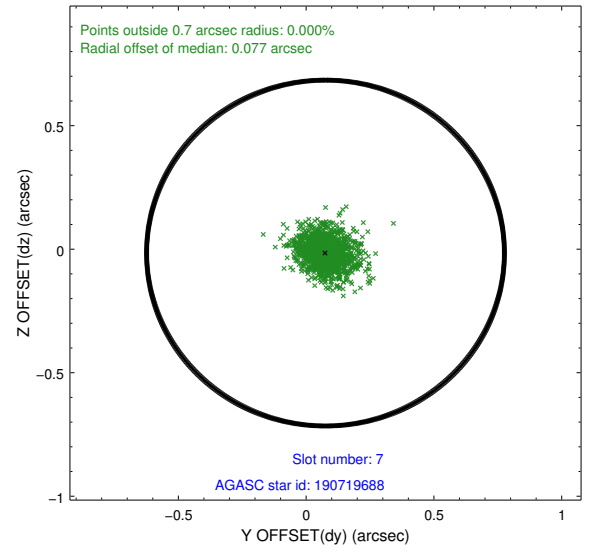
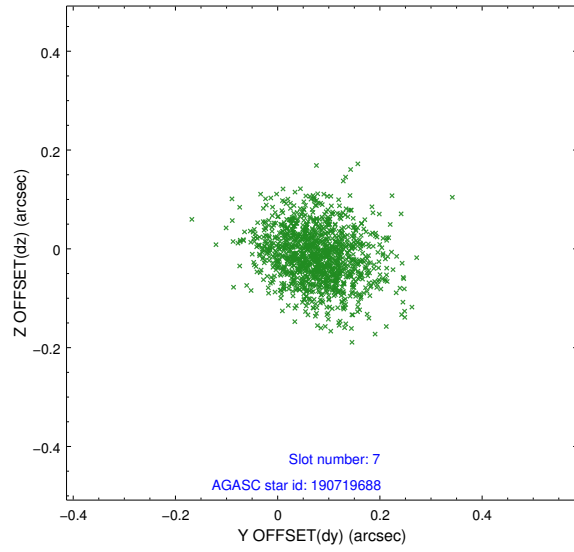
2.4.3 Slot 5



2.4.4 Slot 6

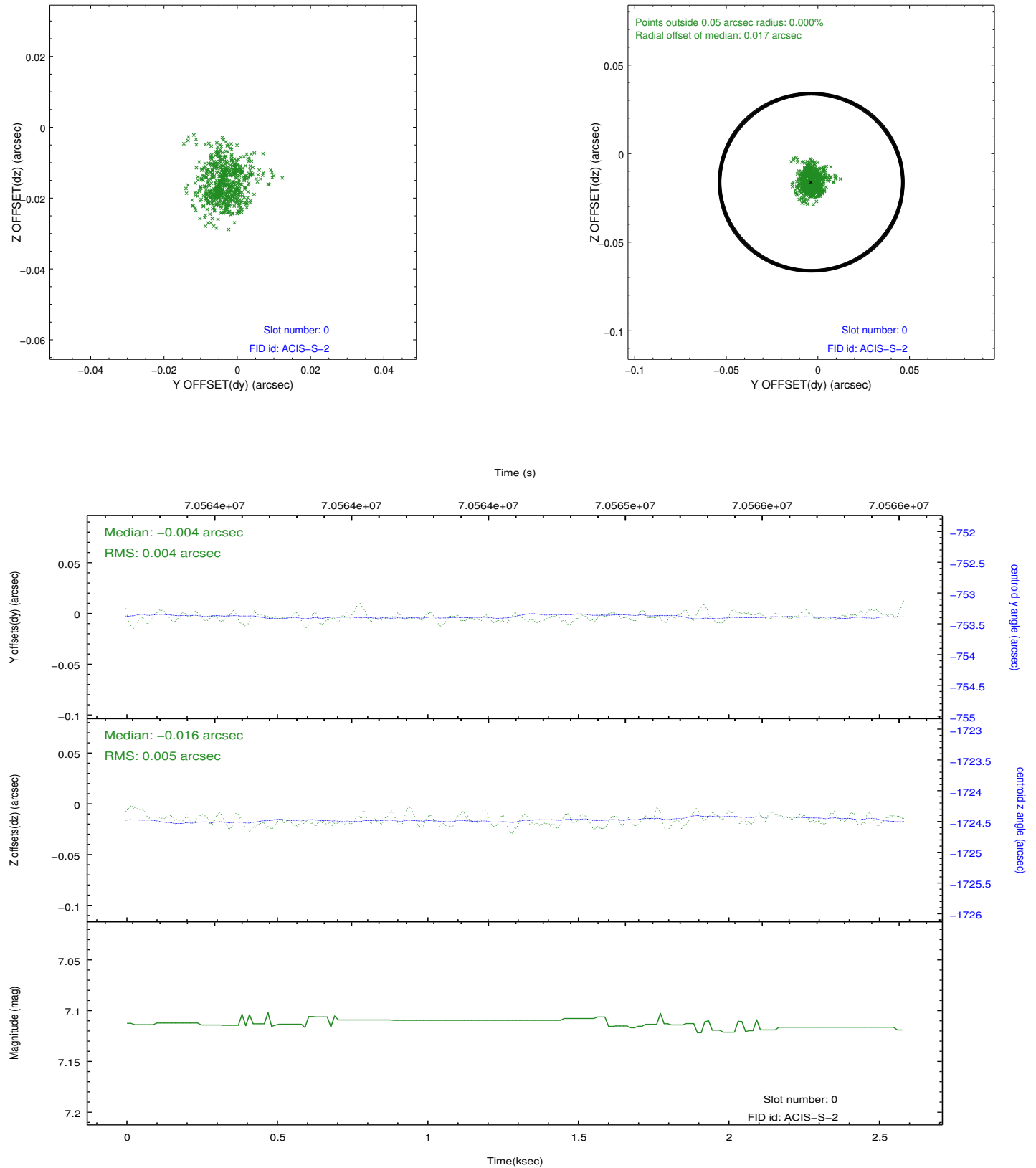


2.4.5 Slot 7

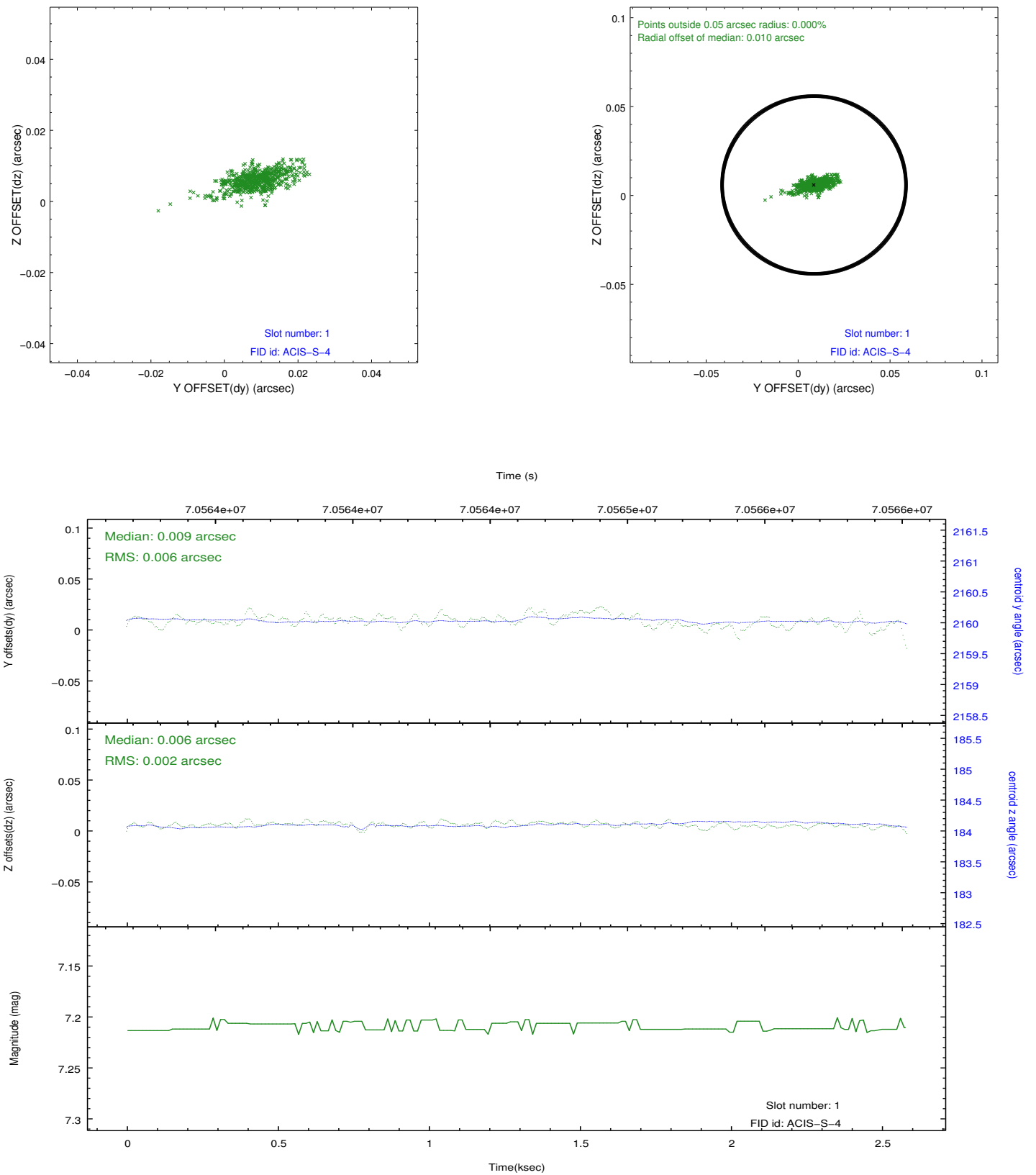


2.5 FID Slots

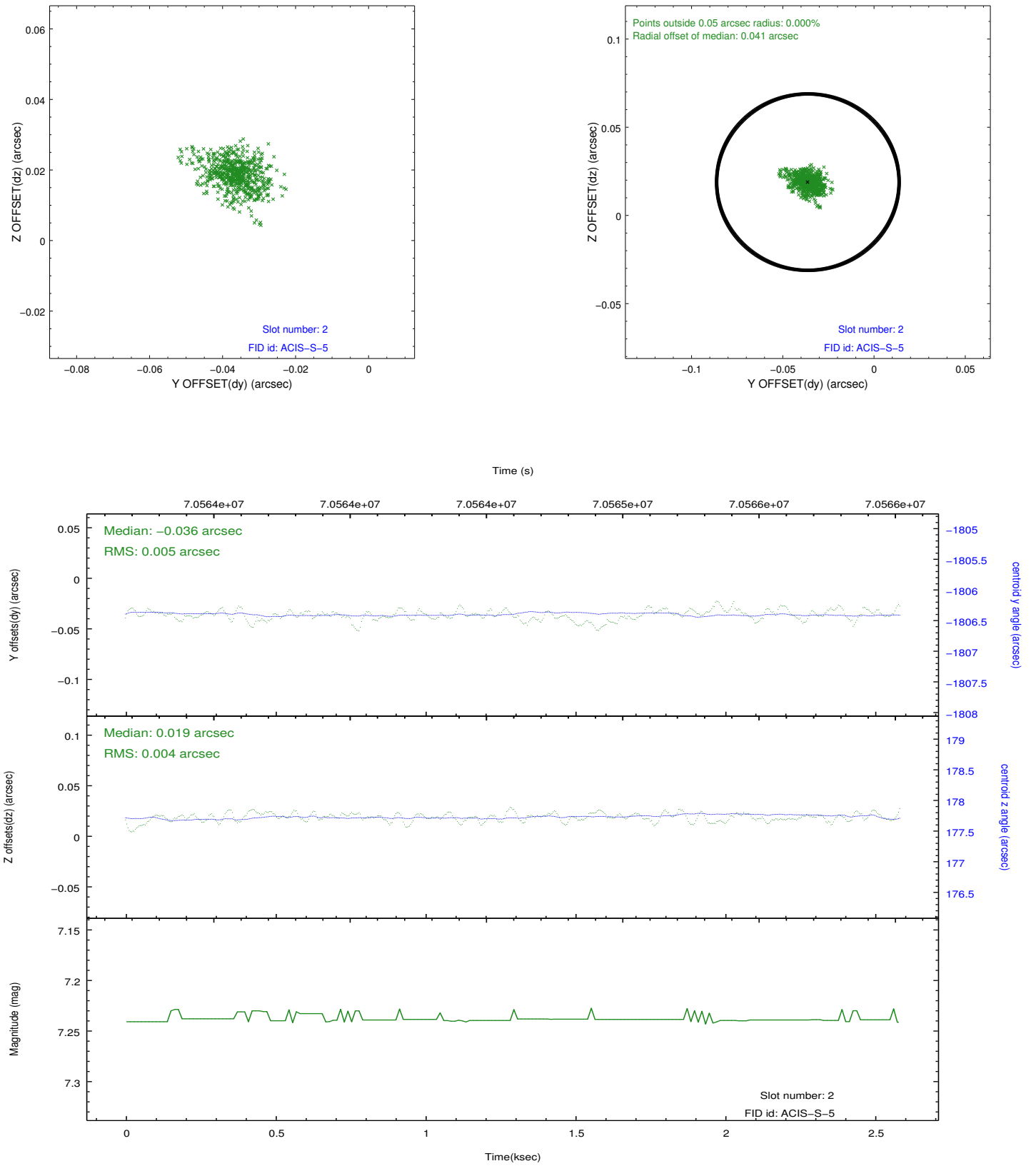
2.5.1 Slot 0



2.5.2 Slot 1



2.5.3 Slot 2



A Summary

A.1 Status

V&V Scientist	Jen Lauer
V&V Date (YYYY-MM-DD)	2012.08.27
V&V Edition	1
V&V Disposition and Status	OK
V&V Charge Time	1.824

A.2 Comments