

V&V Reference Report

L2 ASCDS Version : 8.5.1.1

Observation 963 - L2 Version 4
Chandra X-Ray Center

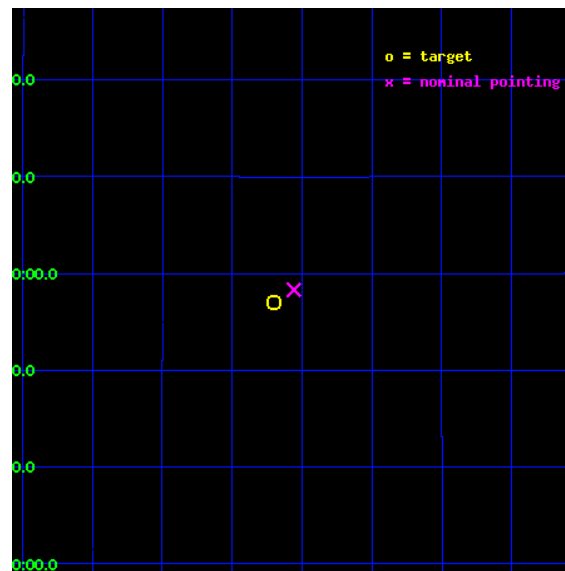
L2 Processing Date : Jan 15 2013

Contents

1	Front	2
2	OBI	3
2.1	OBI	3
2.1.1	Images	3
2.1.2	Bias	3
2.1.3	Parameters	4
2.1.4	Events	4
2.2	Compared Parameters	5
2.3	Aspect	6
2.4	Star Slots	9
2.4.1	Slot 3	9
2.4.2	Slot 4	10
2.4.3	Slot 5	11
2.4.4	Slot 6	12
2.4.5	Slot 7	13
2.5	FID Slots	14
A	Summary	15
A.1	Status	15
A.2	Comments	15

1 Front

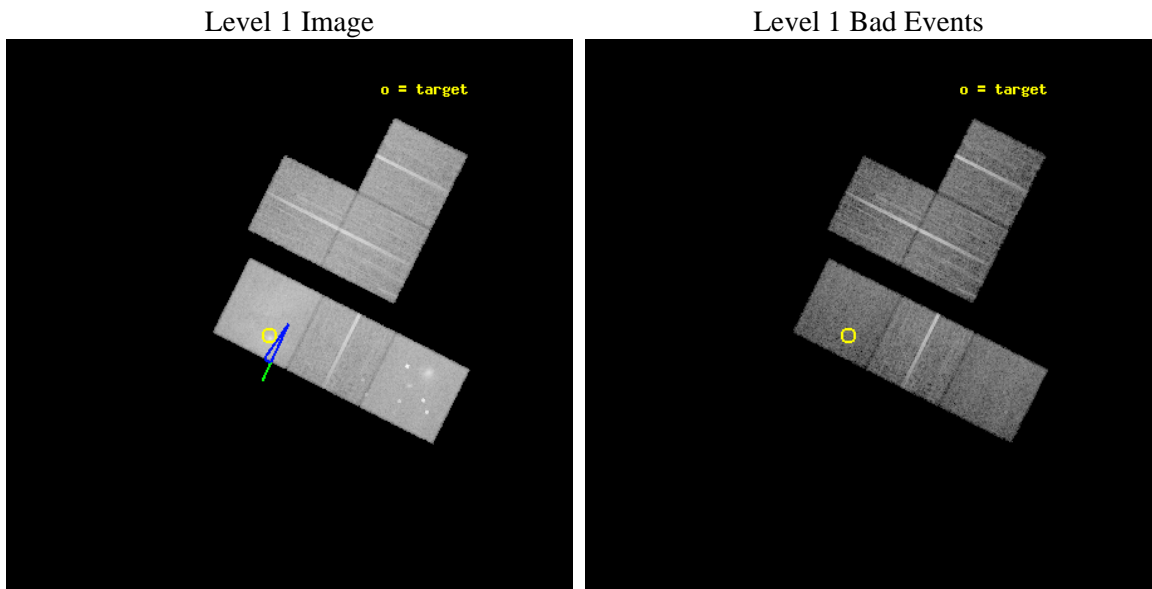
seq_num	600113	Sequence number
obs_id	963	Observation id
title	EARLY TYPE GALAXIES	Proposal title
observer	Dr. Stephen Murray	Principal investigator
object	NGC 4406	Source name
dtcycle	0	
cycle	P	events from which exps? Prim/Second/Both
ra_targ	186.55	Observer's specified target RA [deg]
dec_targ	12.95	Observer's specified target Dec [deg]
ra_nom	186.51460787703	Nominal RA [deg]
dec_nom	12.972019149638	Nominal Dec [deg]
roll_nom	206.68302311467	Nominal Roll [deg]
revision	4	Processing version of data
ontime	0.0	Sum of GTIs [s]
livetime	0.0	Livetime [s]
ontime0	0.0	Sum of GTIs [s]
ontime2	0.0	Sum of GTIs [s]
ontime3	0.0	Sum of GTIs [s]
ontime5	0.0	Sum of GTIs [s]
ontime6	0.0	Sum of GTIs [s]
ontime7	0.0	Sum of GTIs [s]
l2events	0	Number of level 2 events



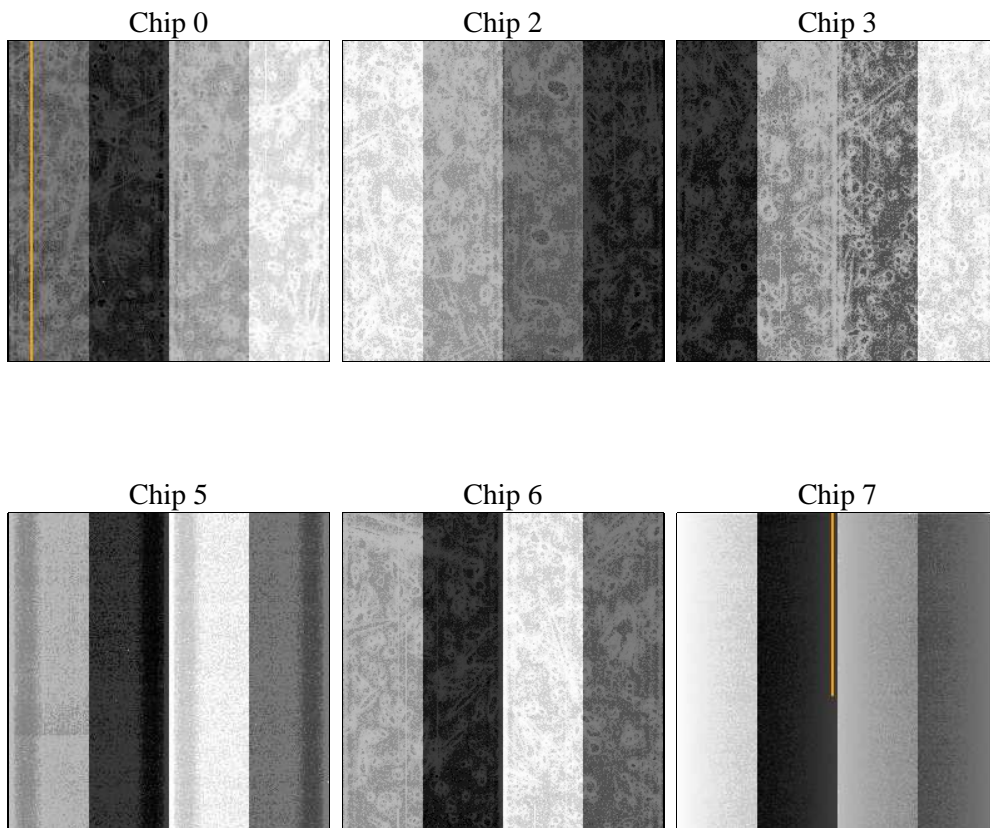
2 OBI

2.1 OBI

2.1.1 Images



2.1.2 Bias



2.1.3 Parameters

obi_num	1	Obi number	sched_exp_time	14500.000000	[s] Scheduled observation exposure time
ascdsver	8.5.1.1	Processing system revision	ontime	0.0	Sum of GTIs [s]
caldsver	4.5.5	 	ontime0	13741.84182328	Sum of GTIs [s]
date	2013-01-15T17:42:14	Date and time of file creation	ontime2	13745.082803443	Sum of GTIs [s]
revision	4	Processing version of data	ontime3	13745.082803443	Sum of GTIs [s]
			ontime5	13745.08283338	Sum of GTIs [s]
			ontime6	13745.082803443	Sum of GTIs [s]
			ontime7	13741.84182331	Sum of GTIs [s]
			l1events	719407	Number of level 1 events

2.1.4 Events

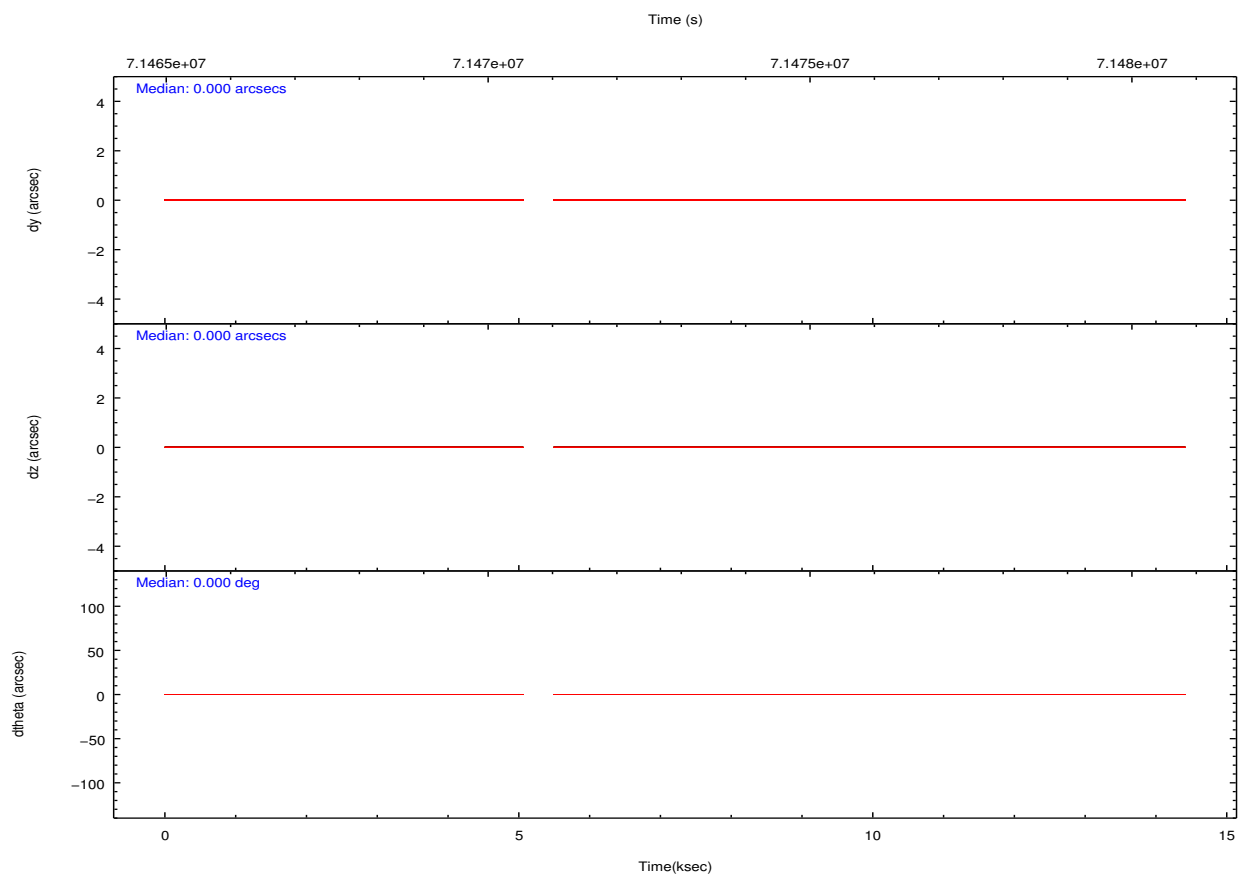
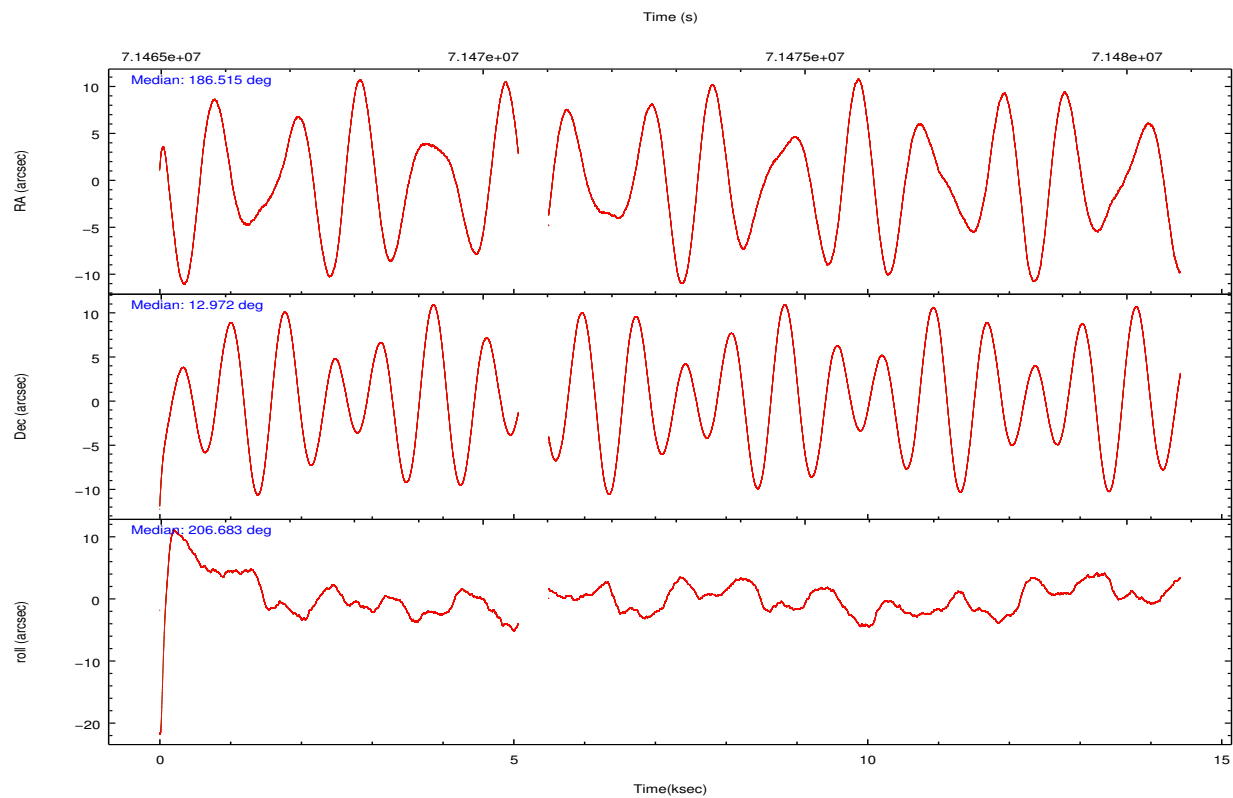
	ccd 0	ccd 2	ccd 3	ccd 5	ccd 6	ccd 7		ccd 0	ccd 2	ccd 3	ccd 5	ccd 6	ccd 7
level 1 events	95446	104050	99928	142110	111413	166460	grade 0 events	8052	10656	8050	16718	14537	23000
rejected events	79321	85477	84129	65867	88094	63335		8%	10%	8%	11%	13%	13%
rejected %	83%	82%	84%	46%	79%	38%	grade 1 events	57	59	54	204	85	110
								0%	0%	0%	0%	0%	0%
							grade 2 events	3385	3447	3295	20483	3798	24160
								3%	3%	3%	14%	3%	14%
							grade 3 events	1138	1040	1100	4038	1298	10680
								1%	0%	1%	2%	1%	6%
							grade 4 events	1123	1140	1082	3948	1296	10812
								1%	1%	1%	2%	1%	6%
							grade 5 events	3052	2801	3075	9638	3531	10995
								3%	2%	3%	6%	3%	6%
							grade 6 events	2427	2290	2272	31056	2390	34473
								2%	2%	2%	21%	2%	20%
							grade 7 events	76212	82617	81000	56025	84478	52230
								79%	79%	81%	39%	75%	31%

2.2 Compared Parameters

Parameter	Planned	Actual
Instrument	ACIS	ACIS
Detector	ACIS-023567	ACIS-023567
Grating	NONE	NONE
Data mode	FAINT	FAINT
Observation mode	POINTING	POINTING
[deg] Pointing RA	186.529989	186.5146078770286
[deg] Pointing Dec	12.995036	12.9720191496376
[deg] Pointing Roll	206.522952	206.6830231146672
[deg] Roll angle	210.000000	210.000000
[deg] Roll tolerance	5.000000	5.000000
Roll constraint allows 180D rotation	N	N
[mm] SIM focus pos	-0.684267	-0.6828225247311905
[mm] SIM defocus	0	0.001444936568705701
[mm] SIM translation stage pos	-190.132523	-190.1400660498719
[mm] SIM translation stage offset	0	0.00754346686406393
[s] Observation start time (MET)	71465614.184000	71464967.84524301
Observation start date	2000-04-07T03:32:30	2000-04-07T03:22:47
[s] Observation end time (MET)	71480114.184000	71480248.545803
Observation end date	2000-04-07T07:34:10	2000-04-07T07:37:28
Read mode	TIMED	TIMED

Parameter	Planned	Actual
Obspar format version number	7	7
Obspar file type	PREDICTED	ACTUAL
Obspar update status	NONE	UPDATED
Number of optional ACIS chips dropped	0	0
On-chip summing requested	N	N
Subarray requested	NONE	NONE
Alternating exposures requested	N	N
[s] Primary exposure time	0.000000	3.2

2.3 Aspect

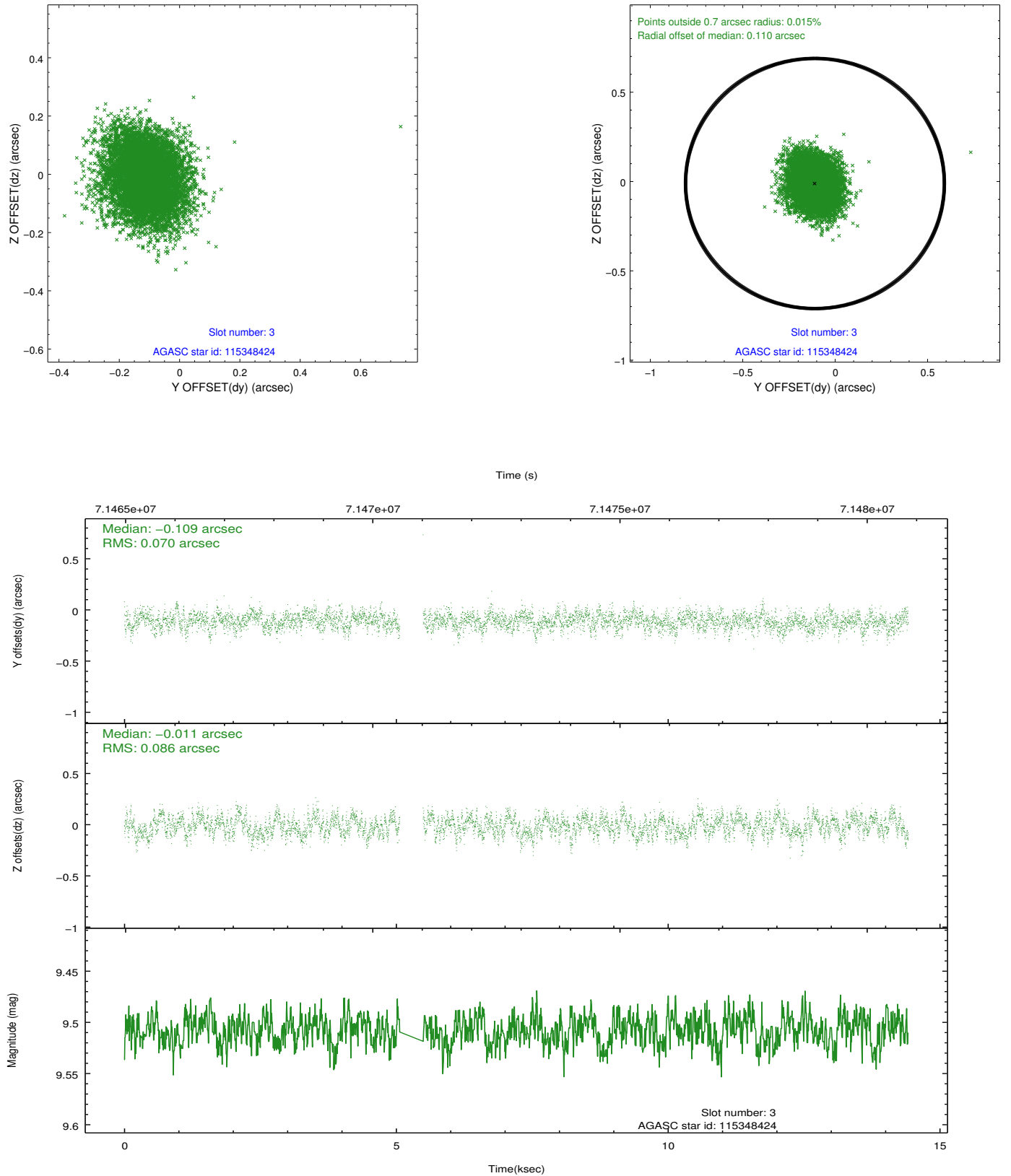


Slot Statistics

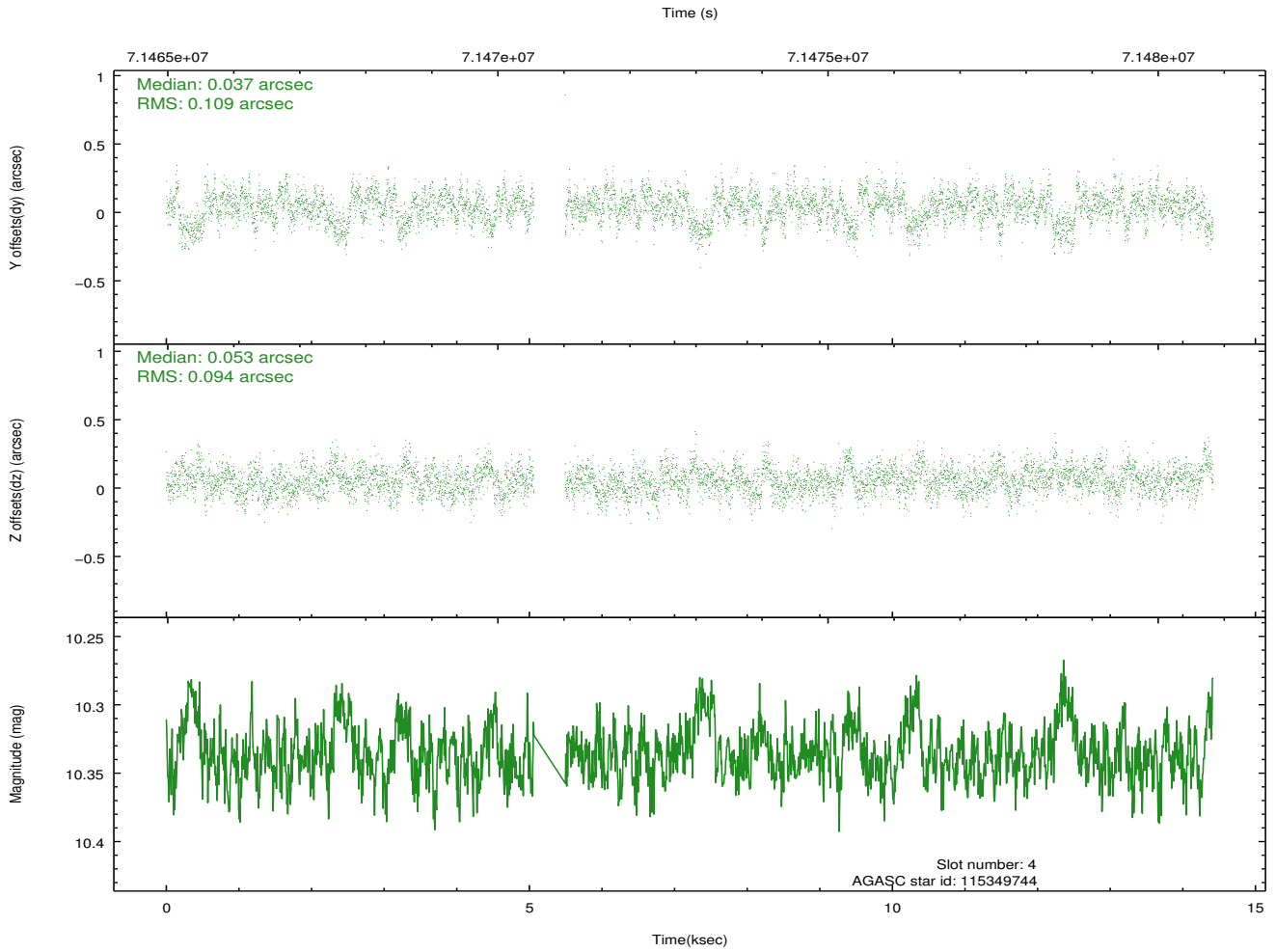
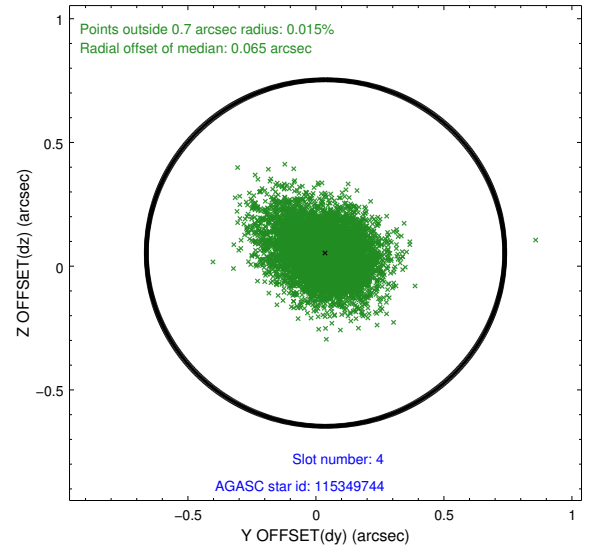
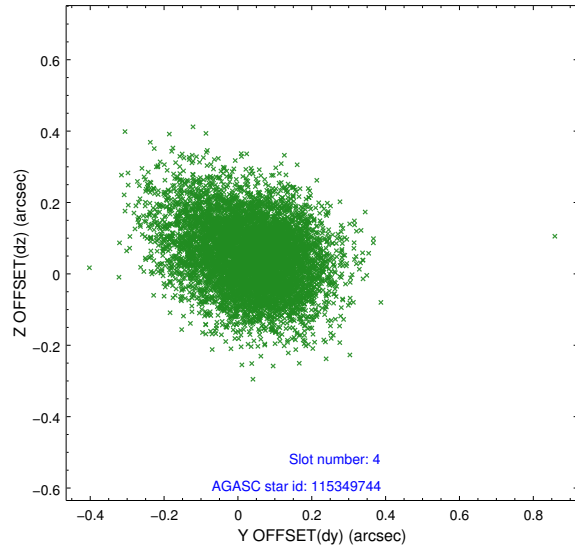
slot	status	id	mag	n_pts	med_dy	med_dz	dr1	dr2	ra	dec	mean_y	mean_z
0	UNUSED		0.00	0	0.000	0.000	0.000	0.000	0.000000	0.000000	0.00	0.00
1	UNUSED		0.00	0	0.000	0.000	0.000	0.000	0.000000	0.000000	0.00	0.00
2	UNUSED		0.00	0	0.000	0.000	0.000	0.000	0.000000	0.000000	0.00	0.00
3	GUIDE	115348424	9.51	6821	-0.109	-0.011	0.118	0.188	187.199498	13.087929	-2250.12	746.41
4	GUIDE	115349744	10.34	6817	0.037	0.053	0.150	0.252	186.878186	12.752529	-703.47	1326.56
5	GUIDE	115215984	9.99	6817	0.070	-0.023	0.108	0.175	186.134733	12.875031	1434.82	-233.66
6	GUIDE	115215968	10.19	6818	0.083	-0.026	0.116	0.190	186.327588	13.159527	371.83	-846.98
7	GUIDE	115347400	10.23	6823	-0.074	0.009	0.127	0.207	186.994146	13.445598	-2177.89	-727.03

2.4 Star Slots

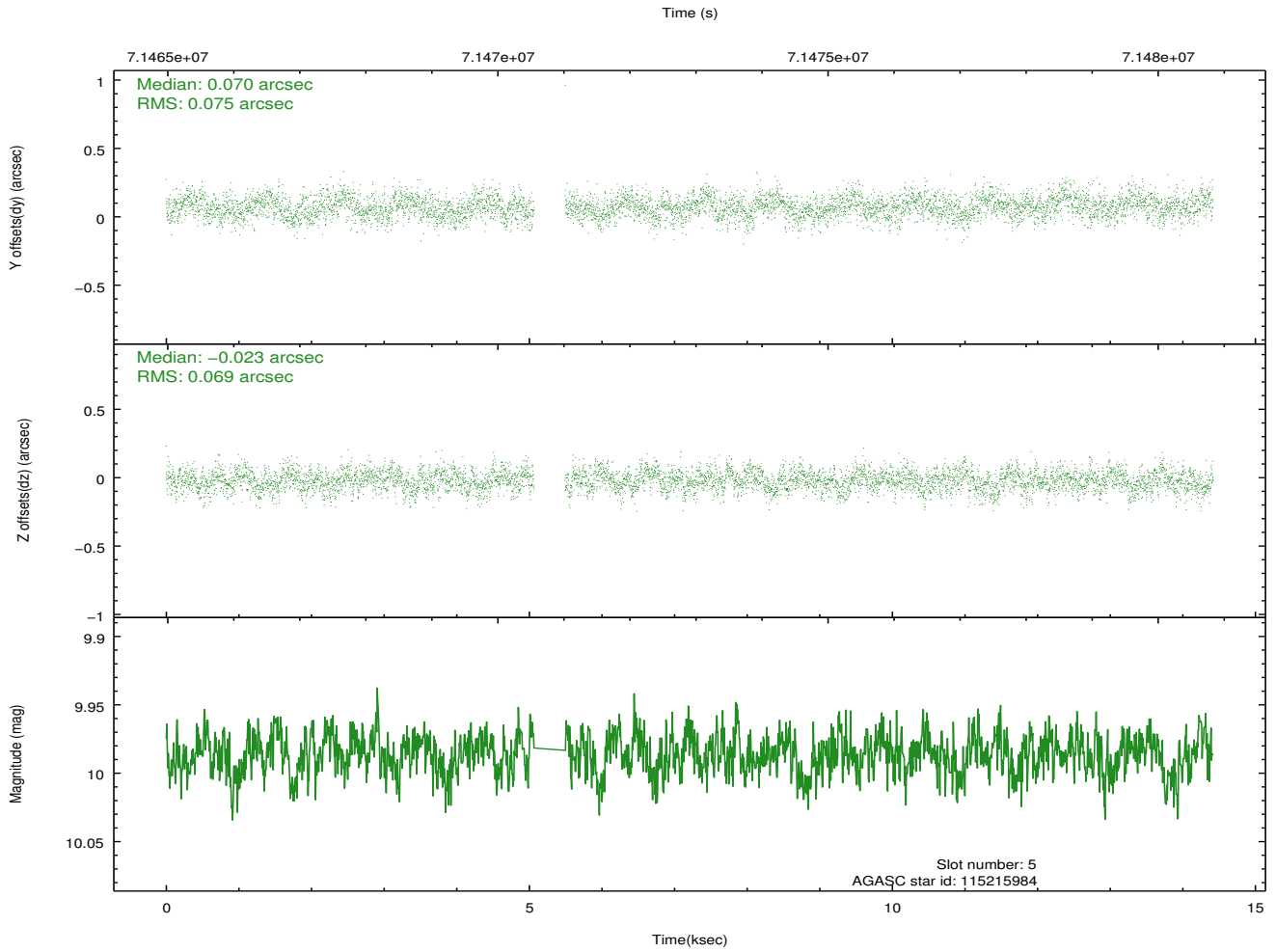
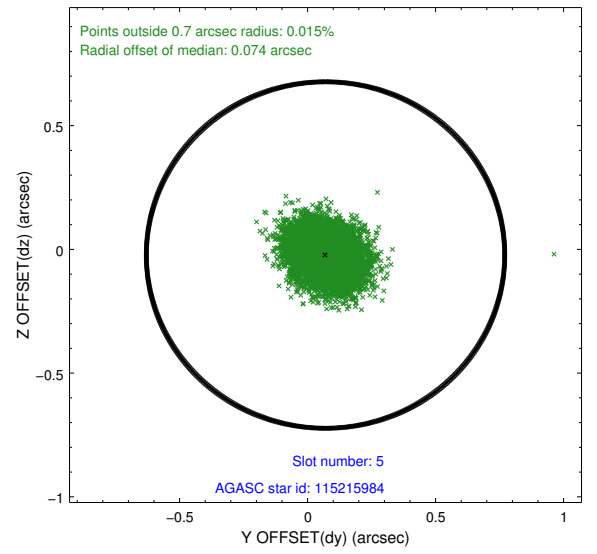
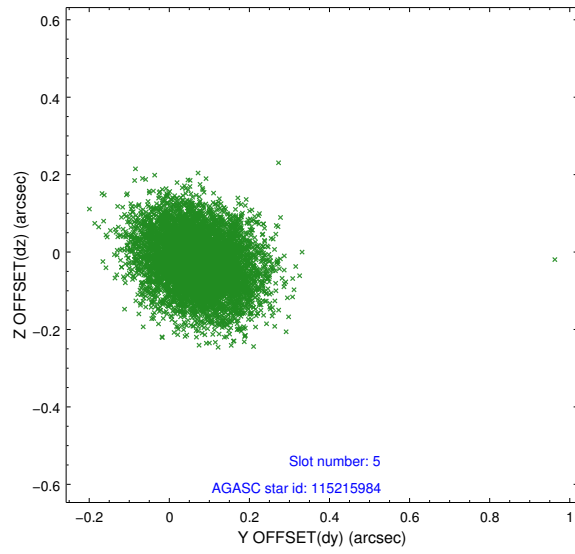
2.4.1 Slot 3



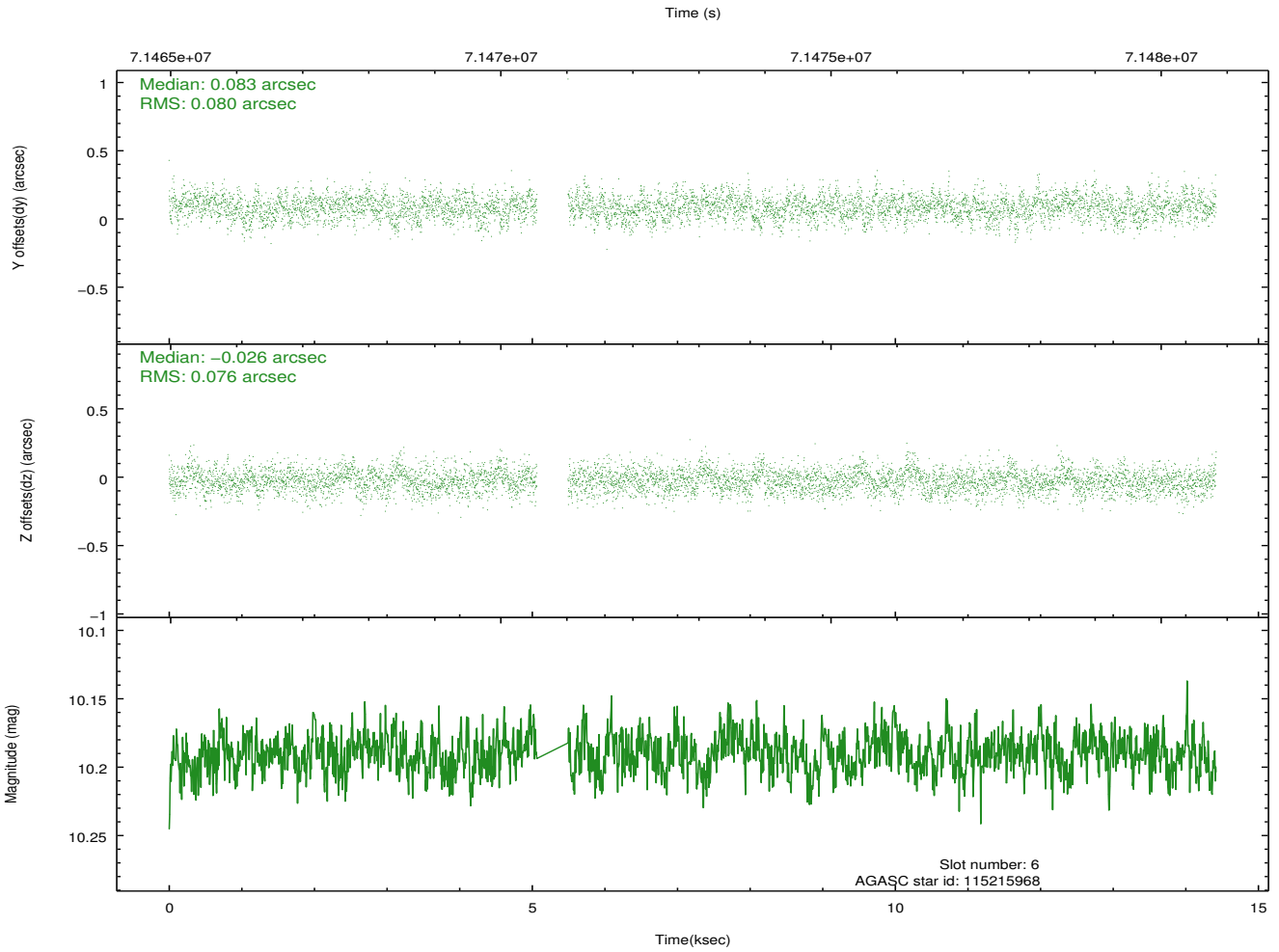
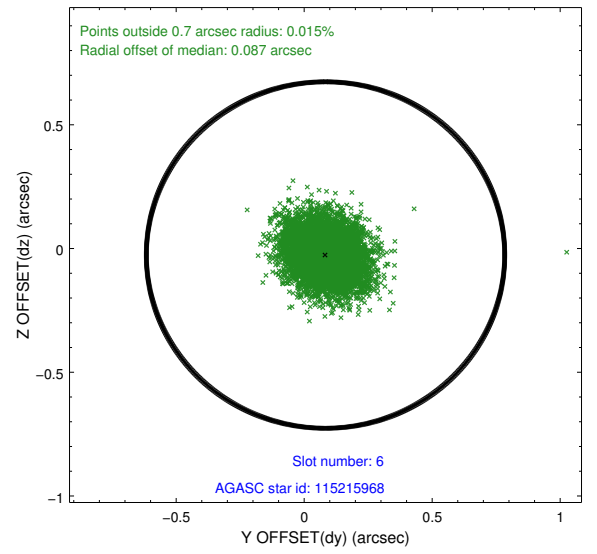
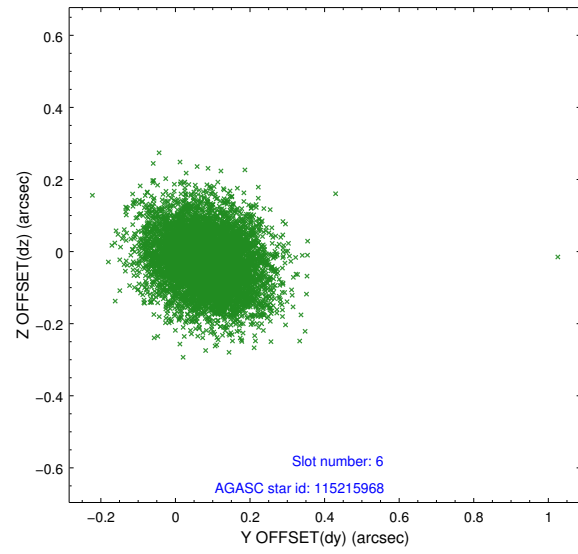
2.4.2 Slot 4



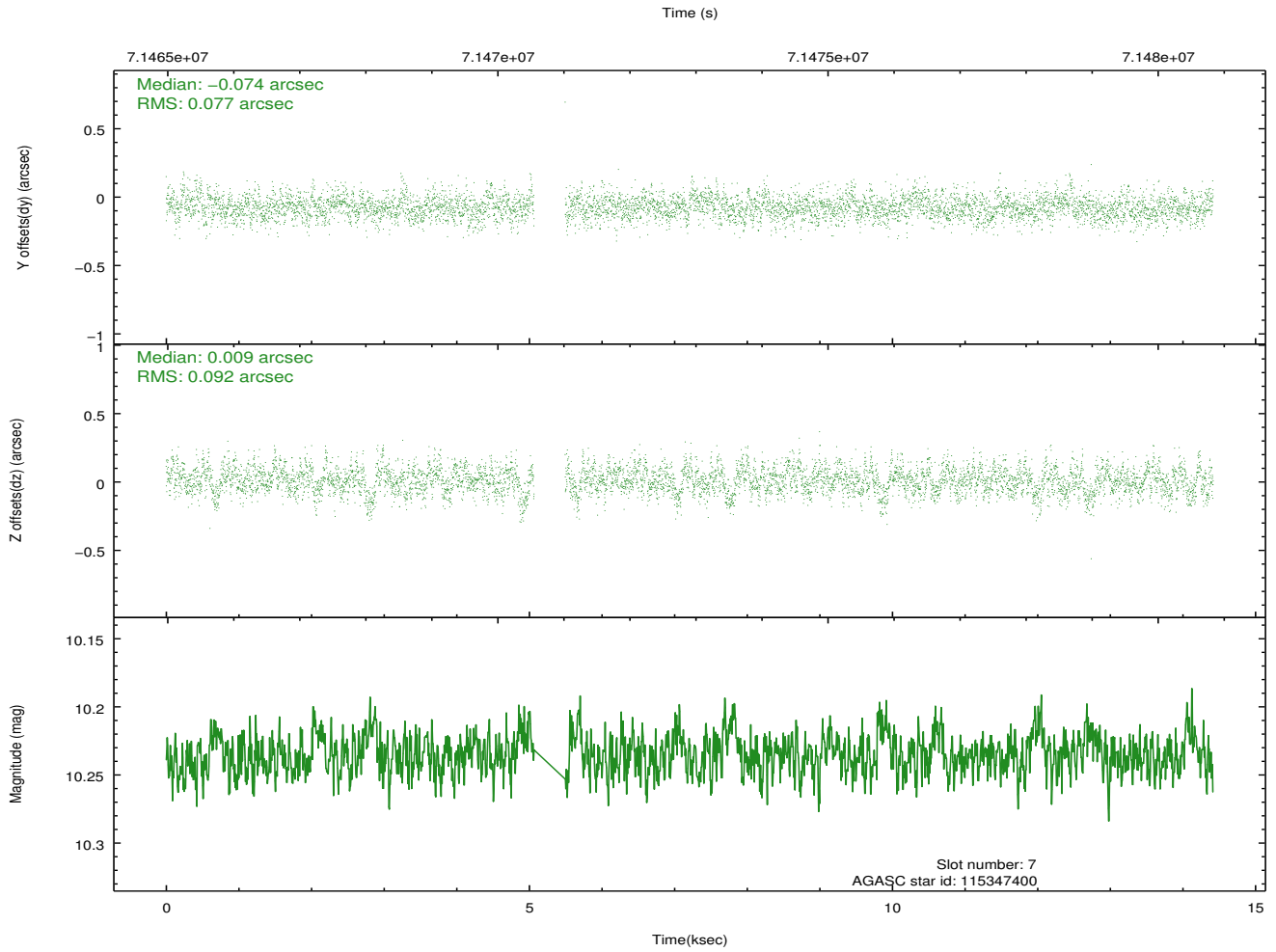
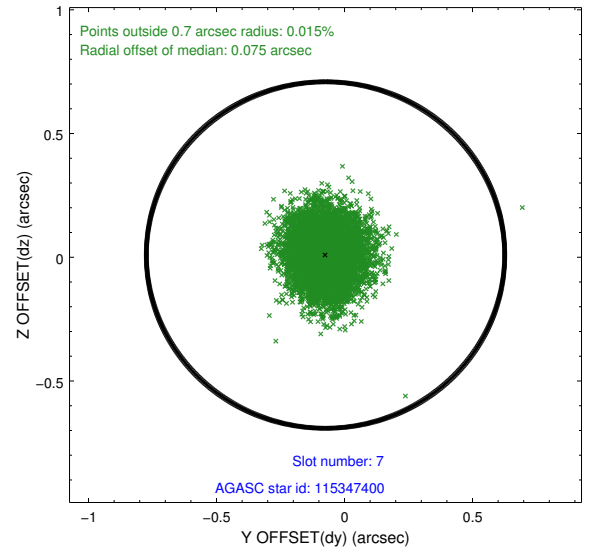
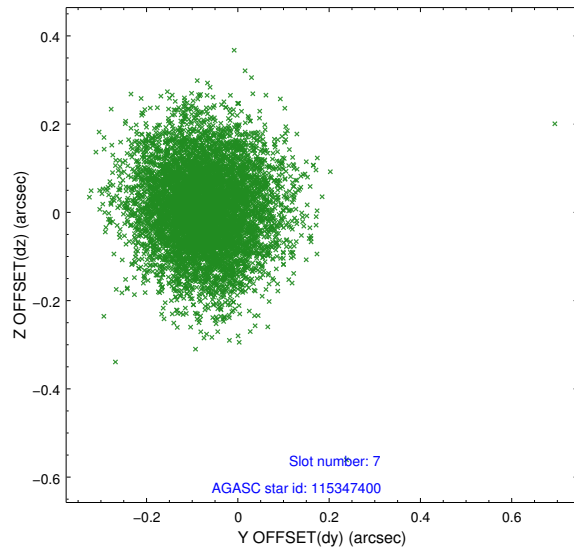
2.4.3 Slot 5



2.4.4 Slot 6



2.4.5 Slot 7



2.5 FID Slots

A Summary

A.1 Status

V&V Scientist	Joy Nichols
V&V Date (YYYY-MM-DD)	2013.01.25
V&V Edition	1
V&V Disposition and Status	OK
V&V Charge Time	14.944

A.2 Comments

Charge time for this ObsId remains at original value of 14.944 ks, although with the current processing the charge time would have been 0 ksec. The difference is due to the fact that the fid lights were not turned on for this observation (operational error), so there is no Good Time Interval. The Level 2 event file is empty, but the Level 1 event file can be used for analysis. The lack of fid light data means there is no way to determine any misalignment between the bore sight of the telescope and the Aspect Camera.

***NOTE: The original processing version (N001) erroneously assigned a non-zero good time and populated the evt2 file with events. This was a software issue with the datamodel that was fixed with a software upgrade.