

V&V Reference Report

L2 ASCDS Version : 8.4.5

Observation 322 - L2 Version 4
Chandra X-Ray Center

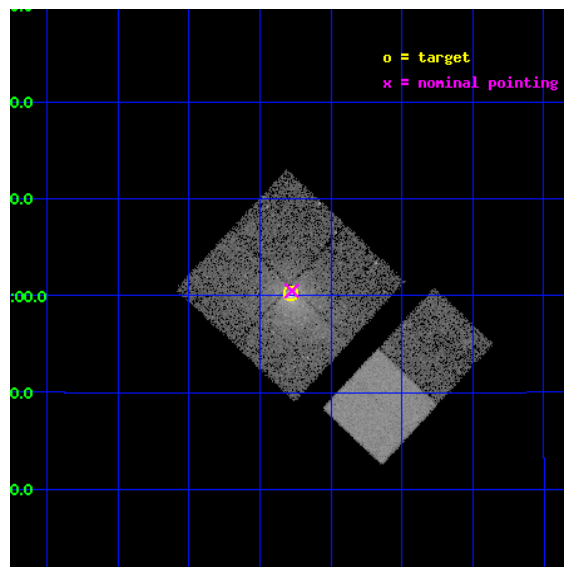
L2 Processing Date : Aug 24 2012

Contents

1	Front	2
2	OBI	3
2.1	OBI	3
2.1.1	Images	3
2.1.2	Bias	3
2.1.3	Parameters	4
2.1.4	Events	4
2.2	Compared Parameters	5
2.3	Aspect	6
2.4	Star Slots	9
2.4.1	Slot 3	9
2.4.2	Slot 4	10
2.4.3	Slot 5	11
2.4.4	Slot 6	12
2.5	FID Slots	13
2.5.1	Slot 0	13
2.5.2	Slot 1	14
2.5.3	Slot 2	15
A	Summary	16
A.1	Status	16
A.2	Comments	16

1 Front

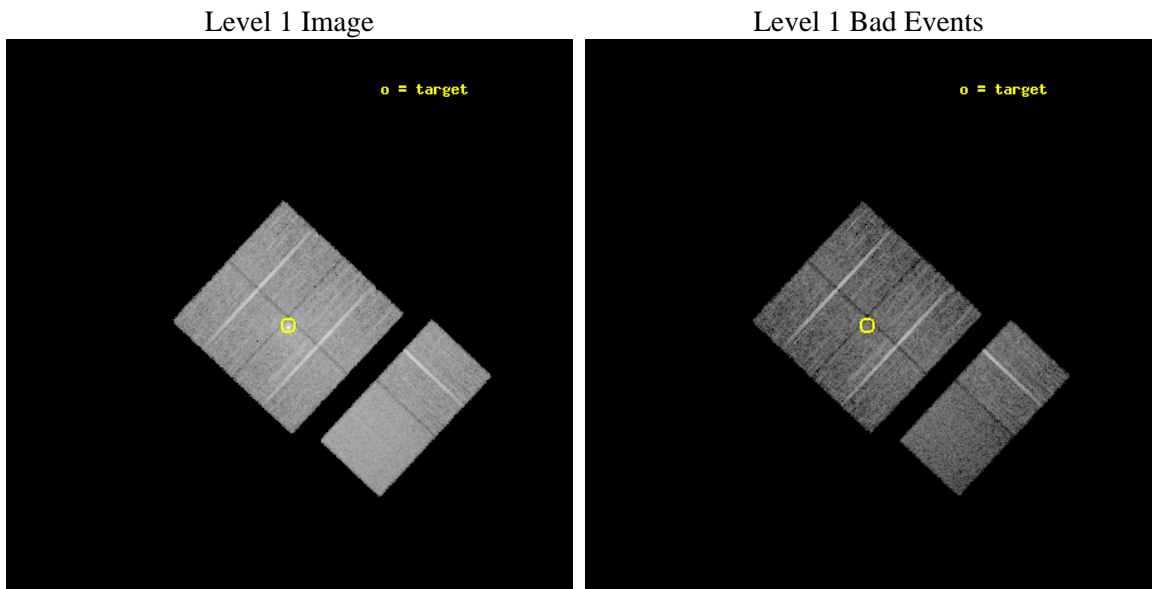
seq_num	600082	Sequence number
obs_id	322	Observation id
title	BRIGHT ELLIPTICAL GALAXIES AND HIGH REDSHIFT CLUSTERS	Proposal tit
observer	Dr. Richard Mushotzky	Principal investigator
object	NGC 4472	Source name
dtcycle	0	
cycle	P	events from which exps? Prim/Second/Both
ra_targ	187.445417	Observer's specified target RA [deg]
dec_targ	8.003611	Observer's specified target Dec [deg]
ra_nom	187.44366297919	Nominal RA [deg]
dec_nom	8.0083527182829	Nominal Dec [deg]
roll_nom	133.08554674505	Nominal Roll [deg]
revision	4	Processing version of data
ontime	10494.552783802	Sum of GTIs [s]
livetime	10361.664437393	Livetime [s]
ontime0	10494.429663807	Sum of GTIs [s]
ontime1	10491.229713649	Sum of GTIs [s]
ontime2	10491.270783588	Sum of GTIs [s]
ontime3	10494.552783802	Sum of GTIs [s]
ontime6	10494.634863809	Sum of GTIs [s]
ontime7	10494.593823805	Sum of GTIs [s]
l2events	99730	Number of level 2 events



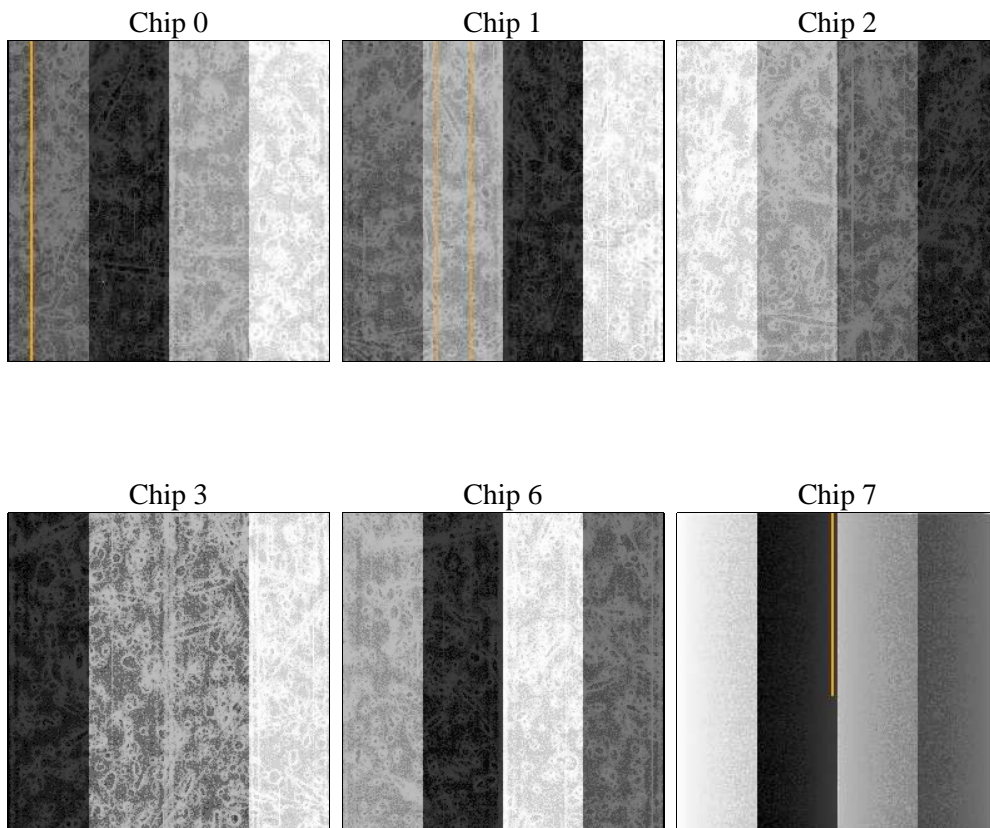
2 OBI

2.1 OBI

2.1.1 Images



2.1.2 Bias



2.1.3 Parameters

obi_num	0	Obi number	sched_exp_time	10200.000000	[s] Scheduled observation exposure time
ascdsver	8.4.5	Processing system revision	ontime	10494.552783802	Sum of GTIs [s]
caldsver	4.5.1.1	 	ontime0	10494.429663807	Sum of GTIs [s]
date	2012-08-24T14:32:45	Date and time of file creation	ontime1	10491.229713649	Sum of GTIs [s]
revision	4	Processing version of data	ontime2	10491.270783588	Sum of GTIs [s]
			ontime3	10494.552783802	Sum of GTIs [s]
			ontime6	10494.634863809	Sum of GTIs [s]
			ontime7	10494.593823805	Sum of GTIs [s]
			l1events	495473	Number of level 1 events

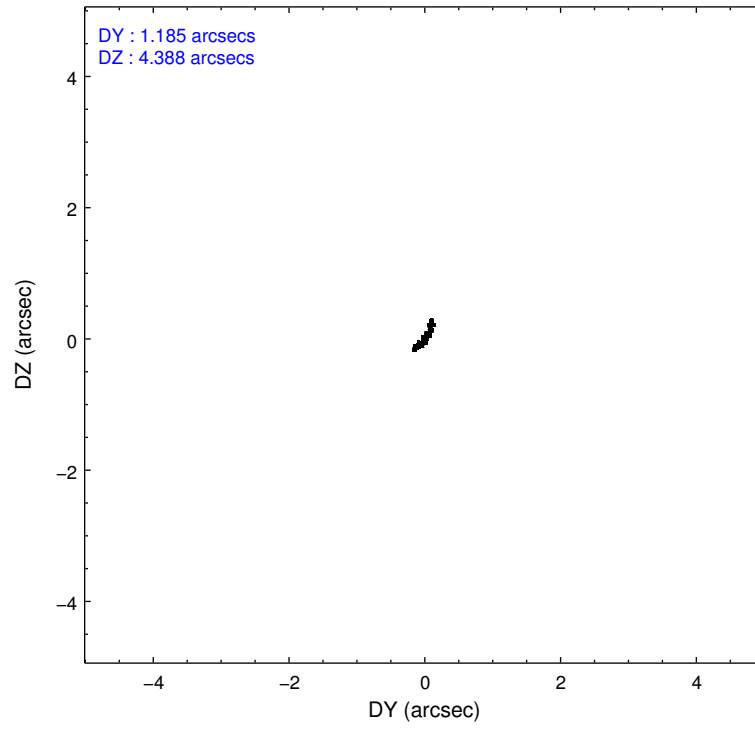
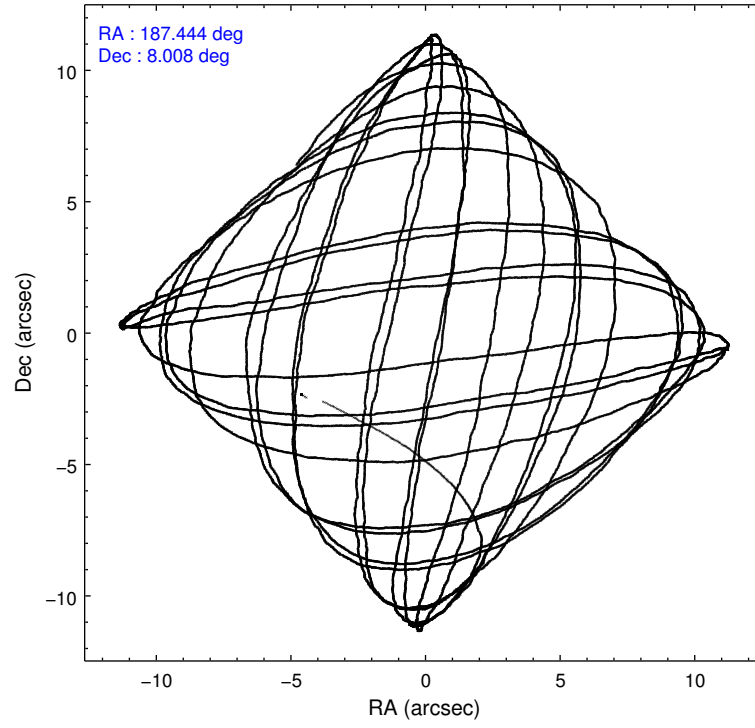
2.1.4 Events

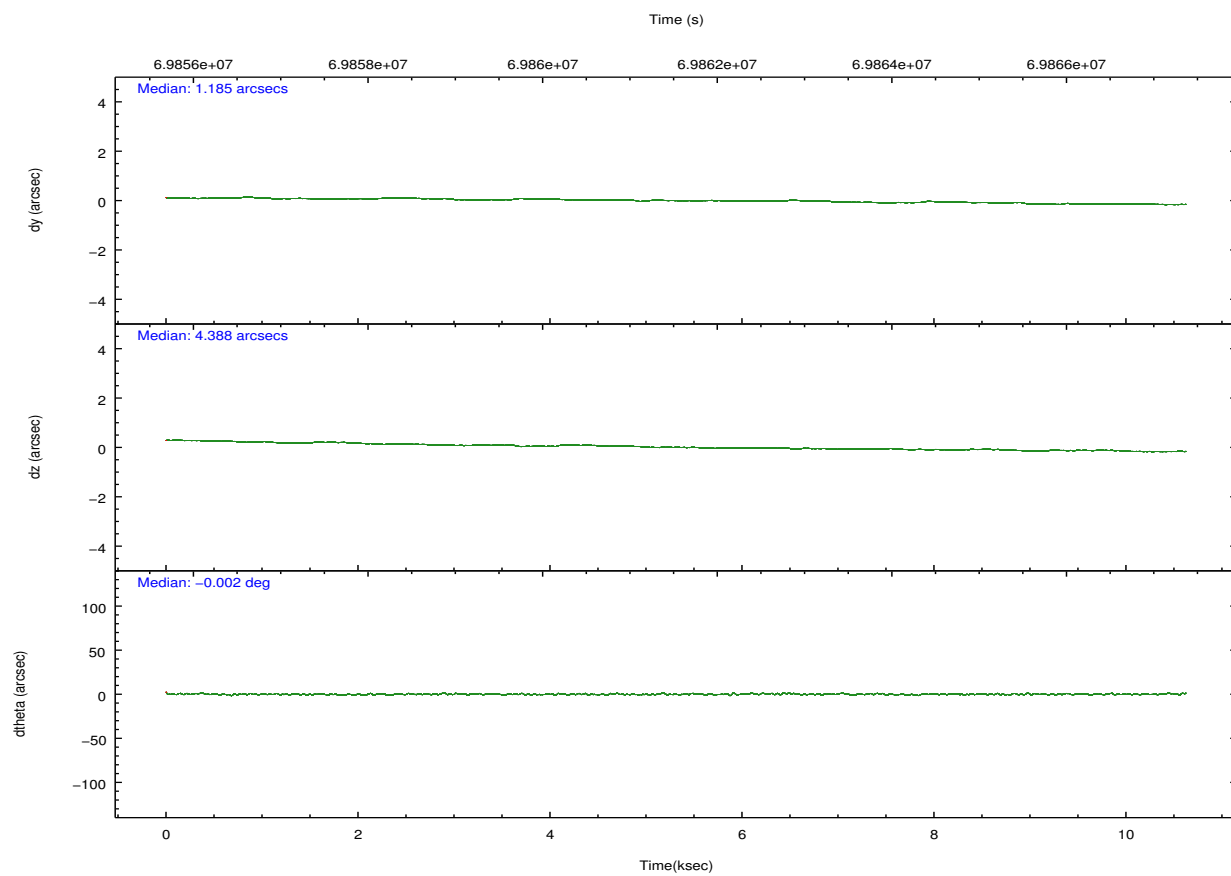
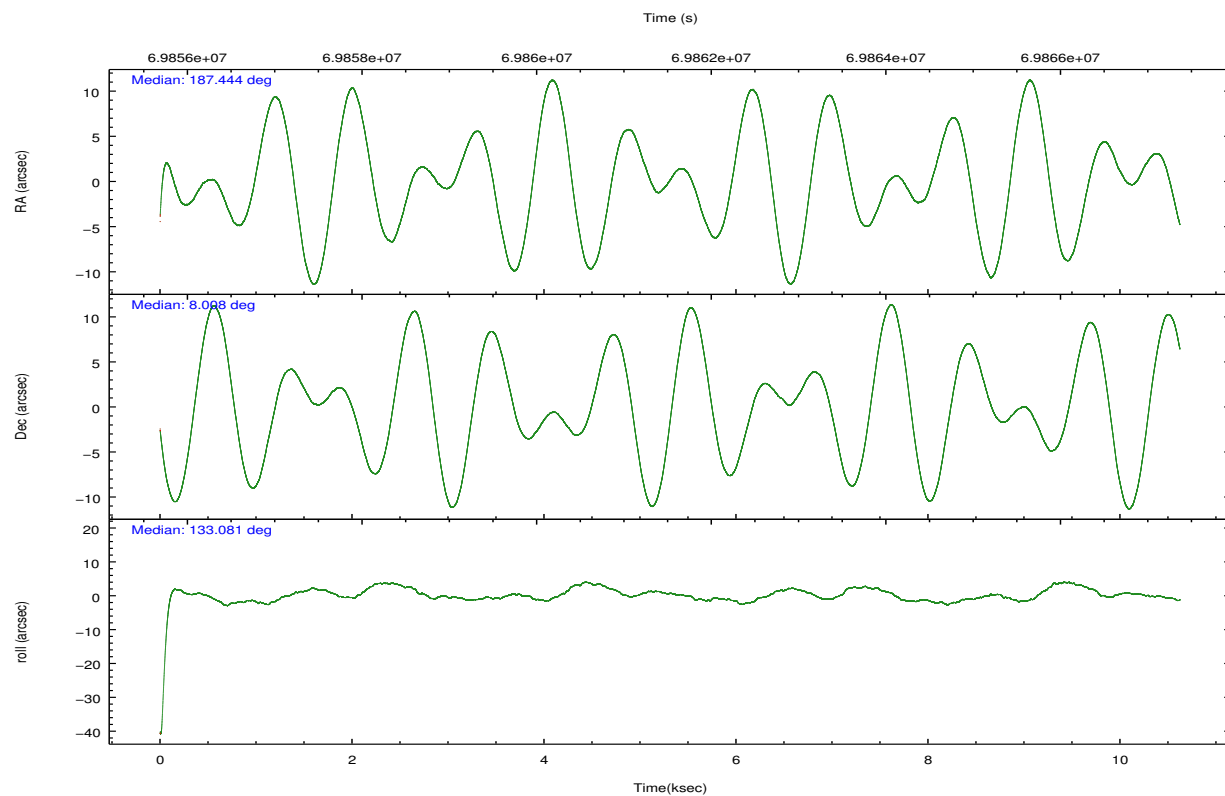
	ccd 0	ccd 1	ccd 2	ccd 3	ccd 6	ccd 7		ccd 0	ccd 1	ccd 2	ccd 3	ccd 6	ccd 7
level 1 events	73181	73967	83125	91226	79394	94580	grade 0 events	4873	6783	6950	15120	4133	5436
rejected events	63306	61617	71210	70100	70334	50698		6%	9%	8%	16%	5%	5%
rejected %	86%	83%	85%	76%	88%	53%	grade 1 events	37	46	43	116	48	80
								0%	0%	0%	0%	0%	0%
							grade 2 events	1840	2042	1900	2537	1652	8898
								2%	2%	2%	2%	2%	9%
							grade 3 events	933	996	844	1064	901	4068
								1%	1%	1%	1%	1%	4%
							grade 4 events	808	972	863	967	824	4011
								1%	1%	1%	1%	1%	4%
							grade 5 events	2389	2497	2283	2517	2887	8581
								3%	3%	2%	2%	3%	9%
							grade 6 events	1423	1565	1364	1451	1555	21493
								1%	2%	1%	1%	1%	22%
							grade 7 events	60878	59066	68878	67454	67394	42013
								83%	79%	82%	73%	84%	44%

2.2 Compared Parameters

Parameter	Planned	Actual	Parameter	Planned	Actual
Instrument	ACIS	ACIS	Obspar format version number	7	7
Detector	ACIS-012367	ACIS-012367	Obspar file type	PREDICTED	ACTUAL
Grating	NONE	NONE	Obspar update status	NONE	UPDATED
Data mode	VFAINT	VFAINT	Number of optional ACIS chips dropped	0	0
Observation mode	POINTING	POINTING	On-chip summing requested	N	N
[deg] Pointing RA	187.470294	187.4436629791938	Subarray requested	NONE	NONE
[deg] Pointing Dec	8.000103	8.008352718282852	Alternating exposures requested	N	N
[deg] Pointing Roll	132.873185	133.085546745053	[s] Primary exposure time	0.000000	3.2
[mm] SIM focus pos	-0.782348	-0.7809083437167272			
[mm] SIM defocus	0	0.001439871863259334			
[mm] SIM translation stage pos	-233.592463	-233.5874344608287			
[mm] SIM translation stage offset	0	-0.005018542100998502			
[s] Observation start time (MET)	69856642.184000	69854498.548821			
Observation start date	2000-03-19T12:36:18	2000-03-19T12:01:38			
[s] Observation end time (MET)	69866842.184000	69867762.04930601			
Observation end date	2000-03-19T15:26:18	2000-03-19T15:42:42			
Read mode	TIMED	TIMED			

2.3 Aspect



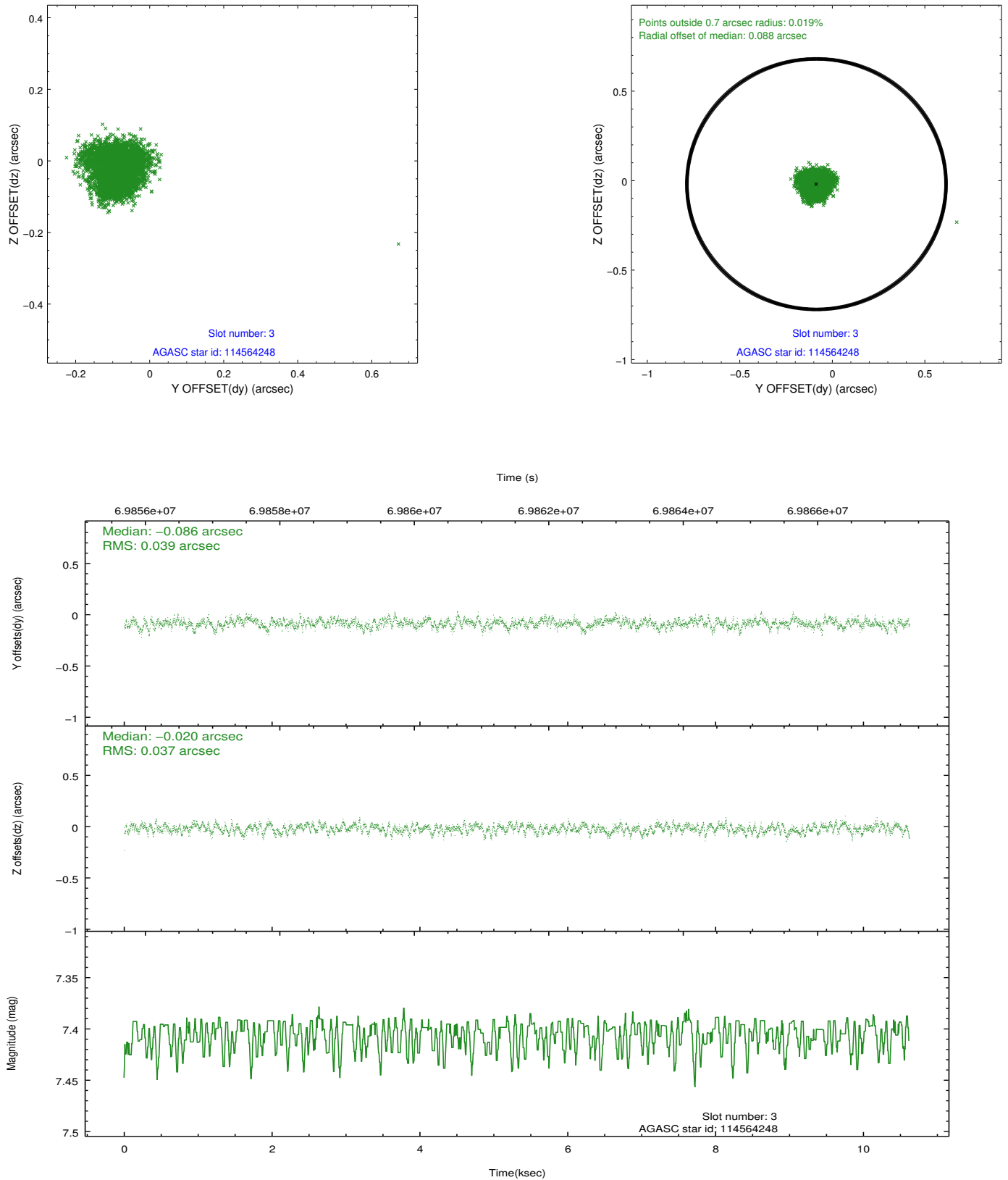


Slot Statistics

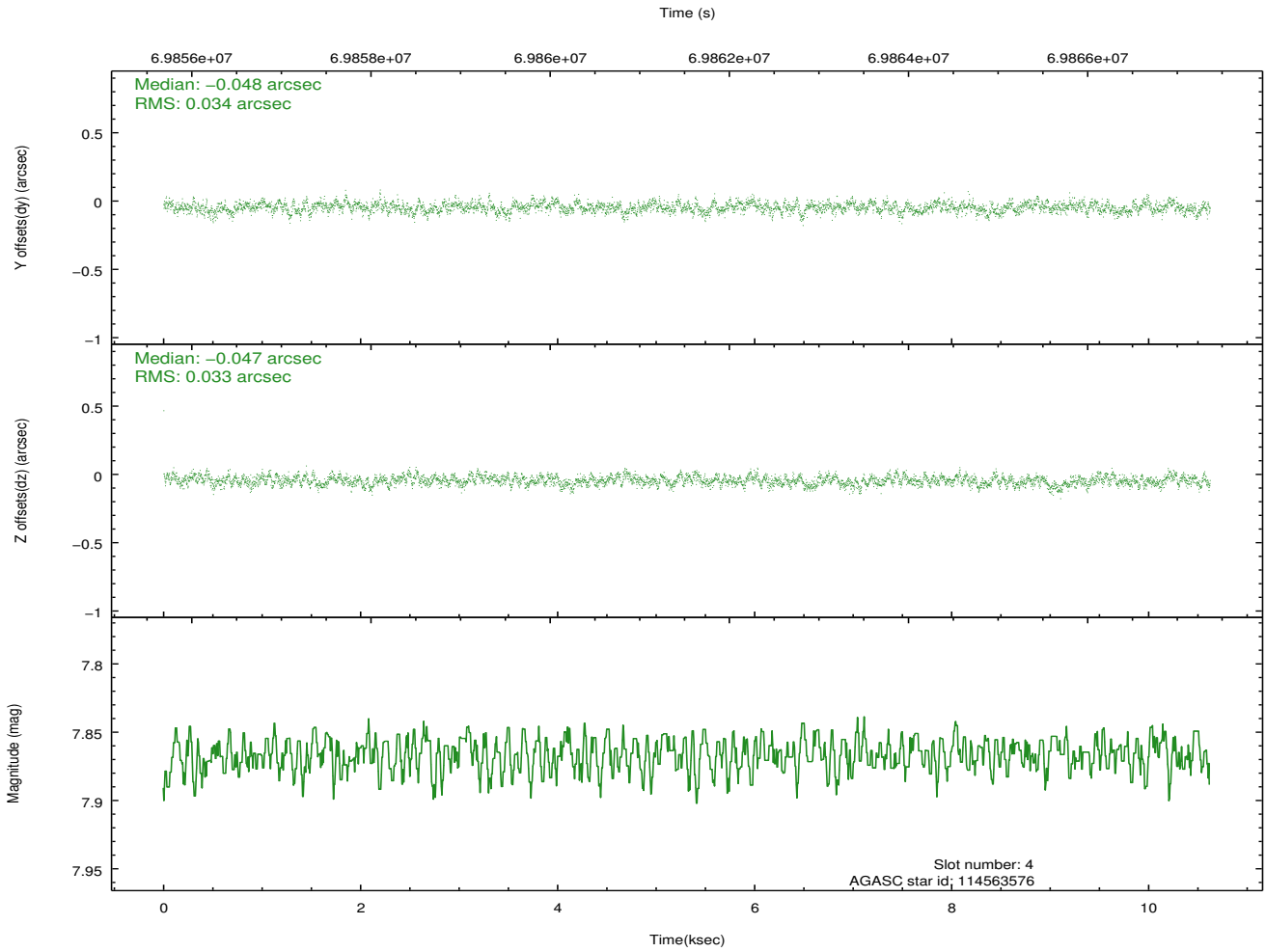
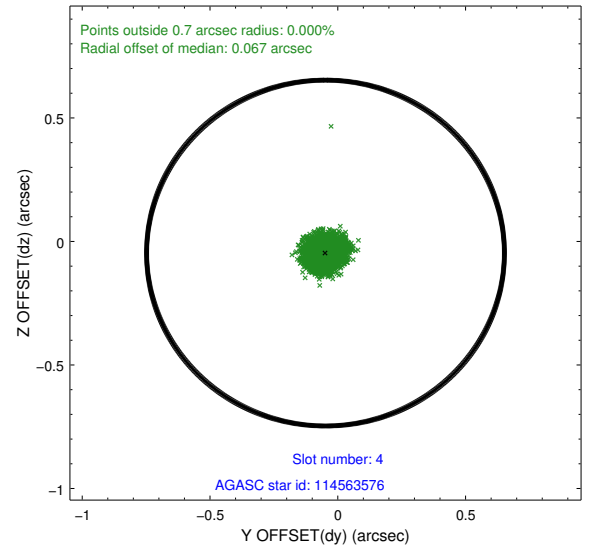
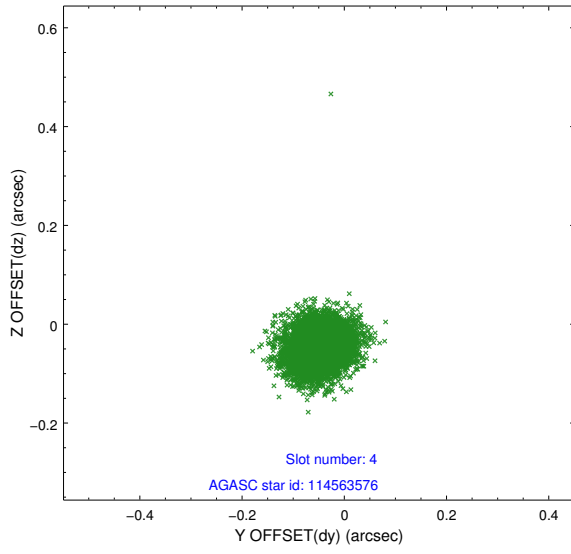
slot	status	id	mag	n_pts	med_dy	med_dz	dr1	dr2	ra	dec	mean_y	mean_z
0	FID	ACIS-I-2	7.15	2592	-0.035	-0.032	0.008	0.016	0.000000	0.000000	-755.54	-834.13
1	FID	ACIS-I-4	7.19	2592	-0.014	0.037	0.006	0.011	0.000000	0.000000	2158.32	1071.87
2	FID	ACIS-I-5	7.23	2592	-0.052	0.064	0.008	0.014	0.000000	0.000000	-1808.75	1070.30
3	GUIDE	114564248	7.40	5182	-0.086	-0.020	0.056	0.090	188.352467	7.946007	-2279.92	-2174.52
4	GUIDE	114563576	7.87	5183	-0.048	-0.047	0.050	0.080	186.867039	8.012388	1496.47	1545.23
5	GUIDE	114561592	9.77	5178	0.085	0.020	0.093	0.150	187.709505	8.445382	596.26	-1714.08
6	GUIDE	114563648	9.81	5176	0.046	0.046	0.104	0.173	187.009208	7.938475	957.01	1355.61
7	UNUSED		0.00	0	0.000	0.000	0.000	0.000	0.000000	0.000000	0.00	0.00

2.4 Star Slots

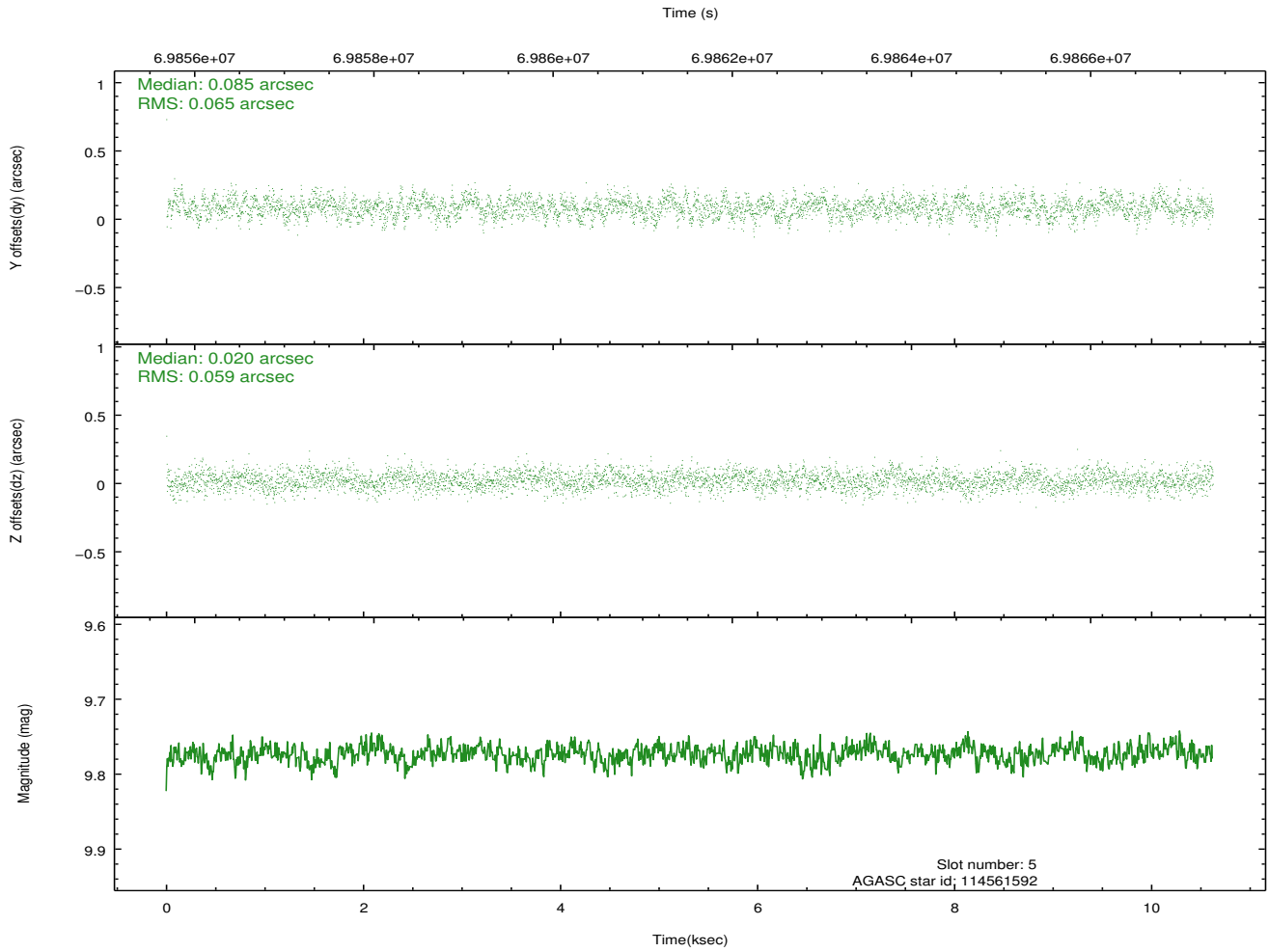
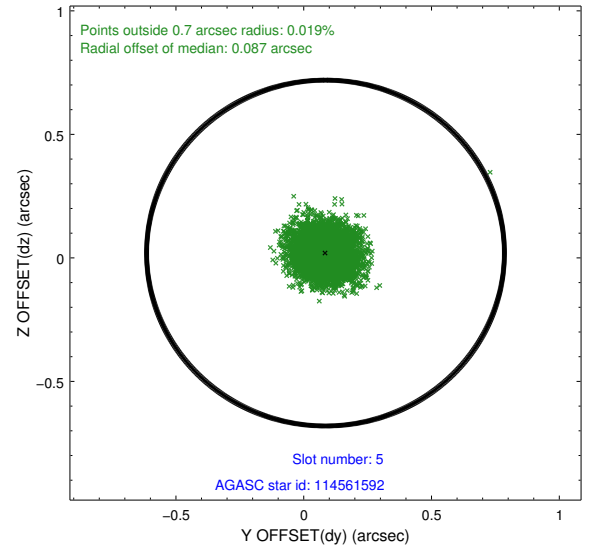
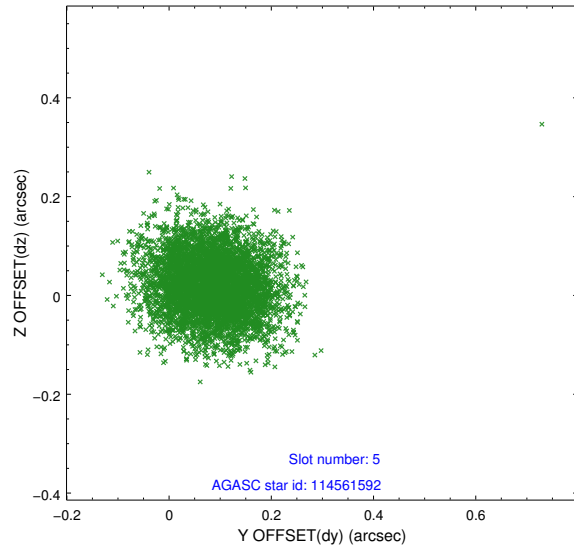
2.4.1 Slot 3



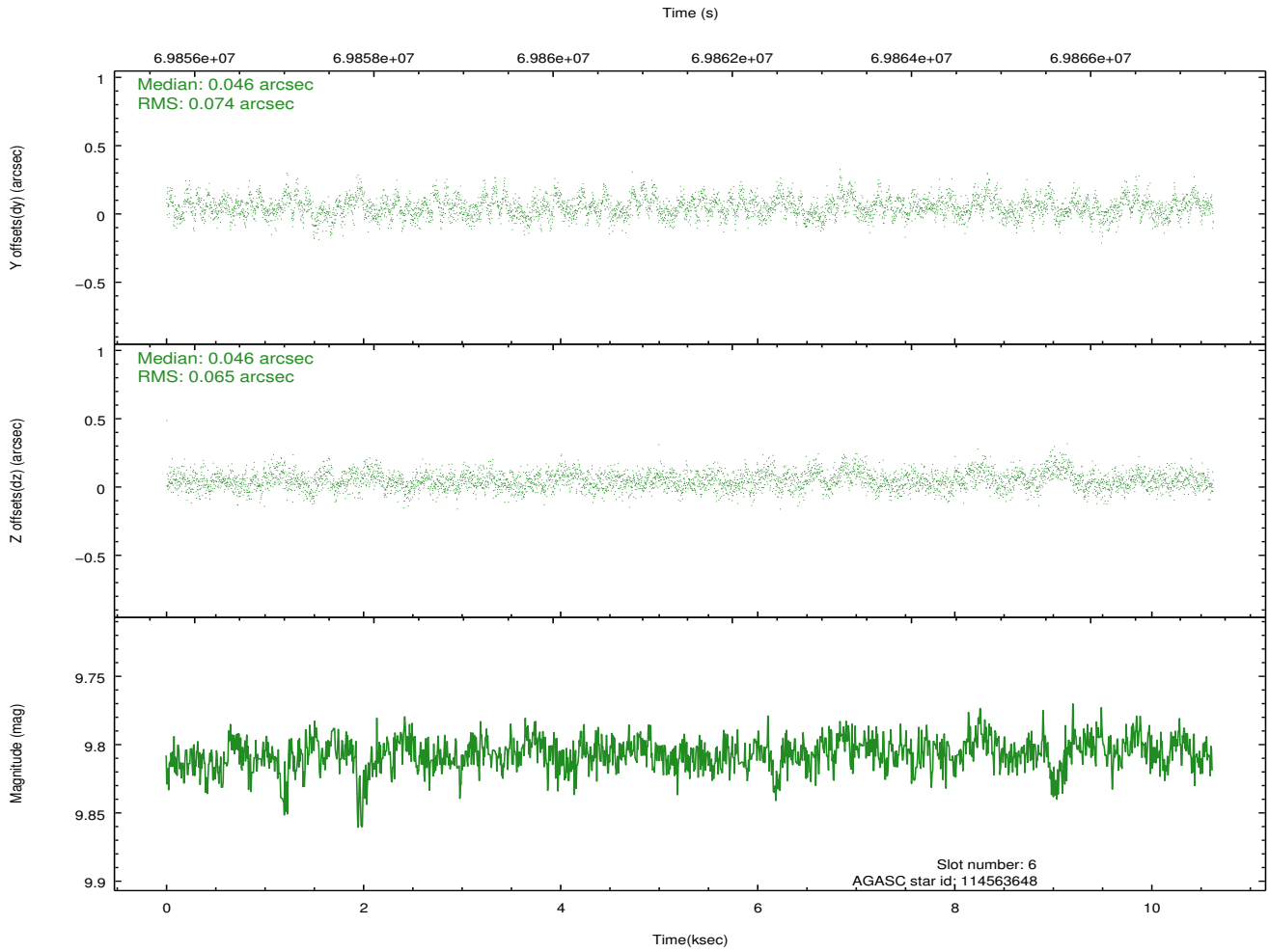
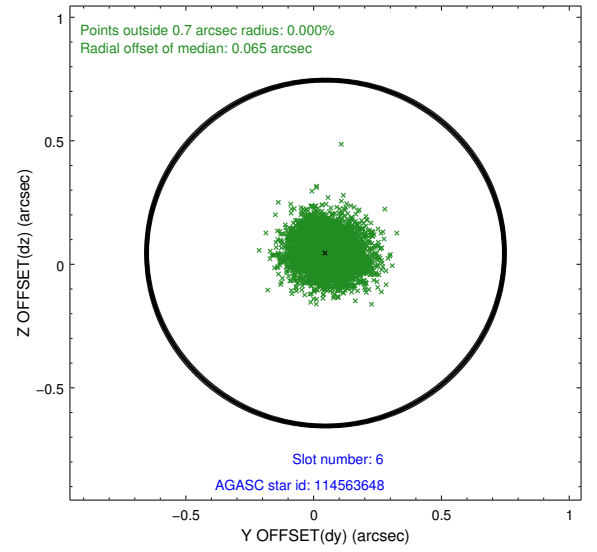
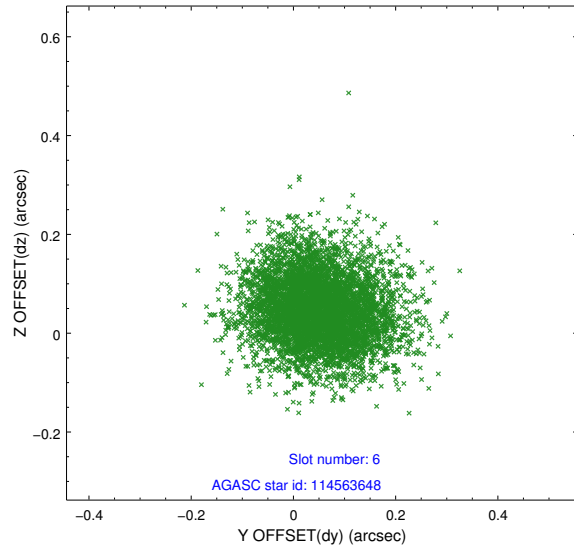
2.4.2 Slot 4



2.4.3 Slot 5

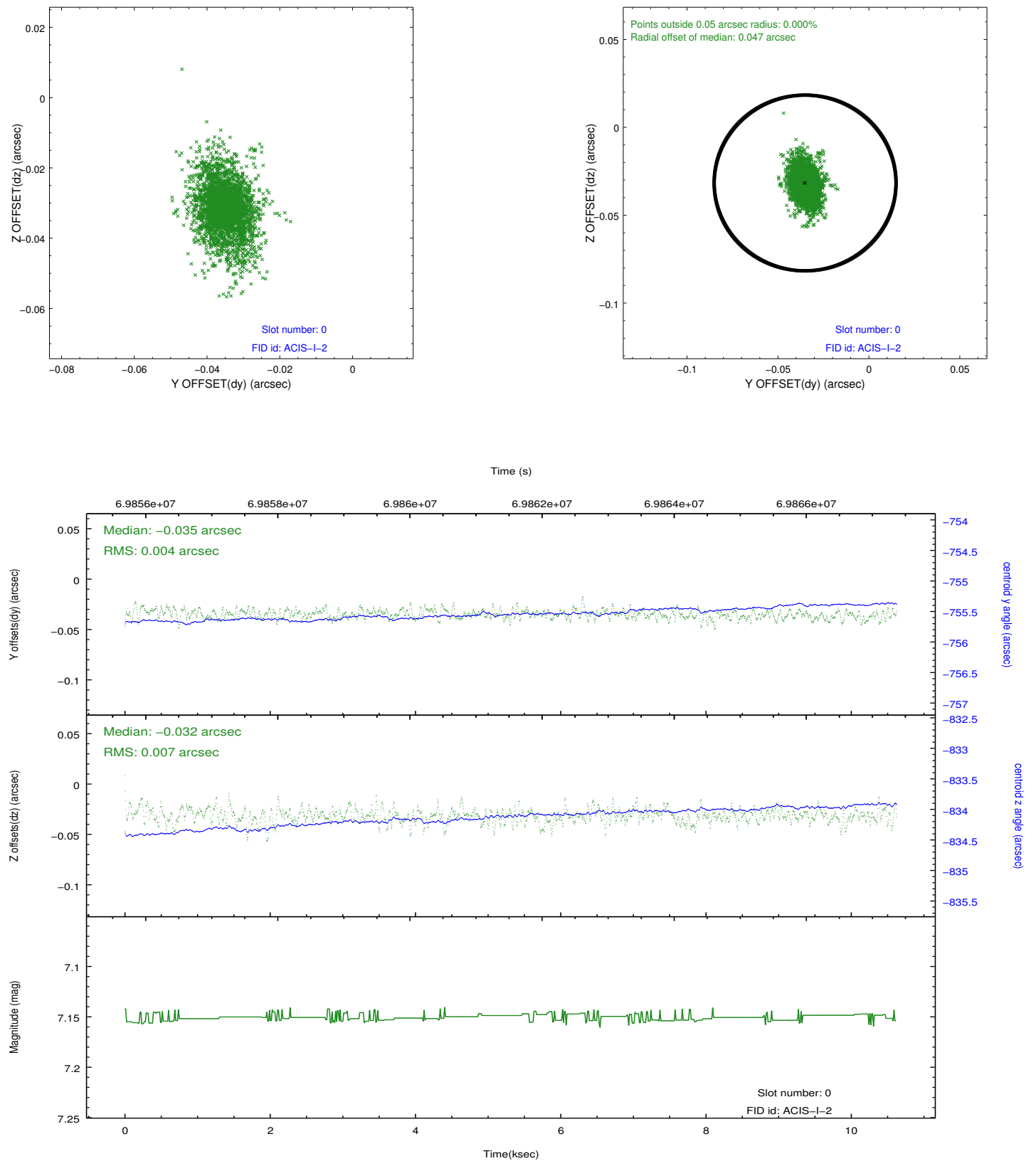


2.4.4 Slot 6

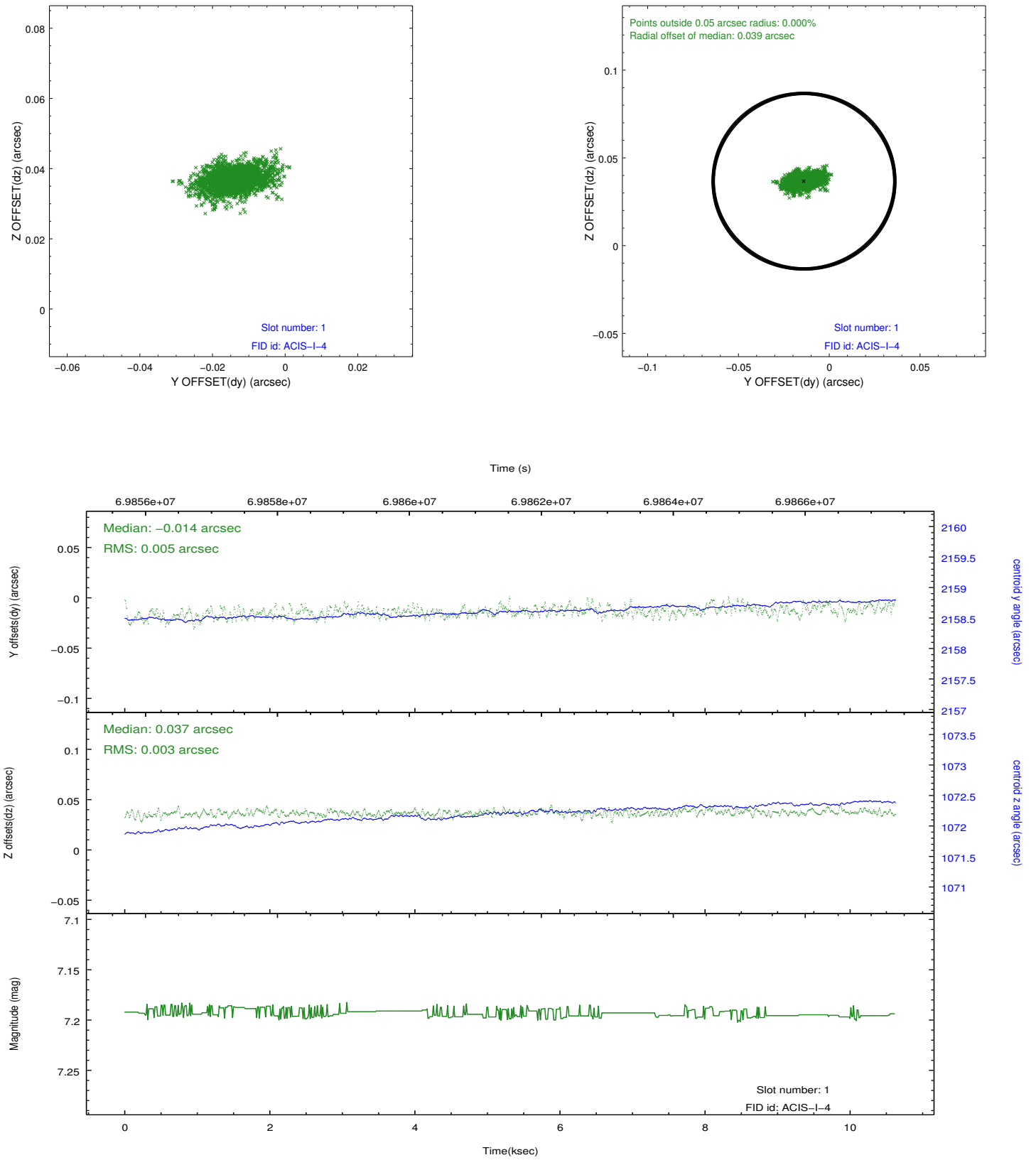


2.5 FID Slots

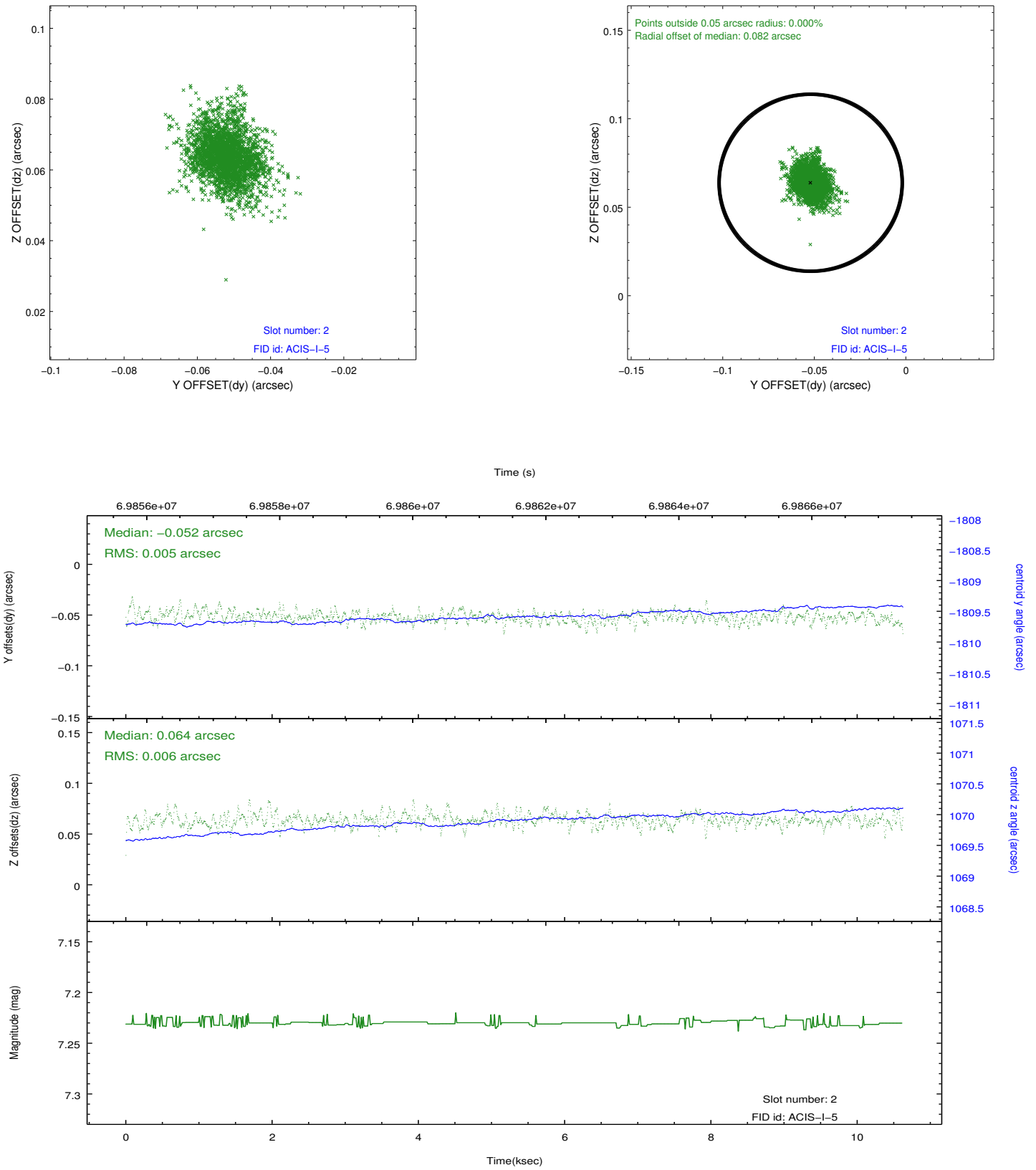
2.5.1 Slot 0



2.5.2 Slot 1



2.5.3 Slot 2



A Summary

A.1 Status

V&V Scientist	Jen Lauer
V&V Date (YYYY-MM-DD)	2012.08.27
V&V Edition	1
V&V Disposition and Status	OK
V&V Charge Time	10.496

A.2 Comments