

# V&V Reference Report

## L2 ASCDS Version : 7.6.10

Observation 317 - L2 Version 001  
Chandra X-Ray Center

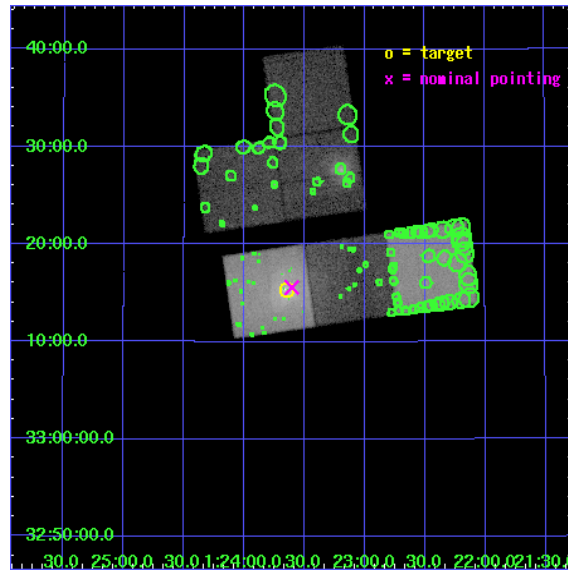
L2 Processing Date : Jun 12 2007

## Contents

<b>1</b>	<b>Front</b>	<b>2</b>
<b>2</b>	<b>OBI</b>	<b>3</b>
2.1	OBI . . . . .	3
2.1.1	Images . . . . .	3
2.1.2	Bias . . . . .	3
2.1.3	Parameters . . . . .	4
2.1.4	Events . . . . .	4
2.2	Compared Parameters . . . . .	5
2.3	Aspect . . . . .	6
2.4	Star Slots . . . . .	9
2.4.1	Slot 3 . . . . .	9
2.4.2	Slot 4 . . . . .	10
2.4.3	Slot 5 . . . . .	11
2.4.4	Slot 6 . . . . .	12
2.4.5	Slot 7 . . . . .	13
2.5	FID Slots . . . . .	14
2.5.1	Slot 0 . . . . .	14
2.5.2	Slot 1 . . . . .	15
2.5.3	Slot 2 . . . . .	16
<b>3</b>	<b>Point Sources</b>	<b>17</b>
<b>A</b>	<b>Summary</b>	<b>18</b>
A.1	Status . . . . .	18
A.2	Comments . . . . .	18

# 1 Front

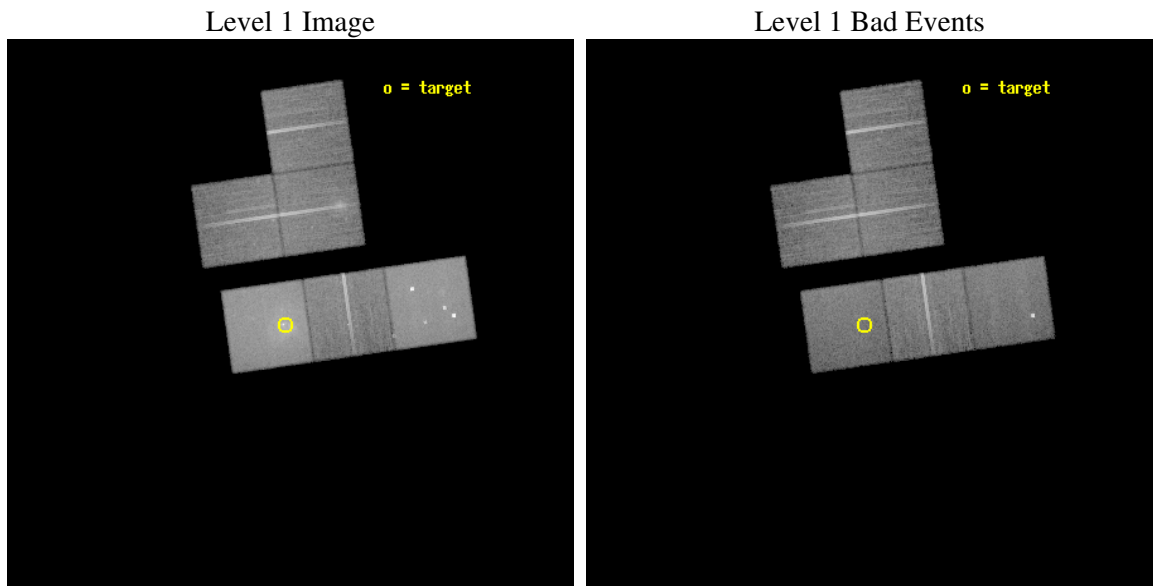
seq_num	600077
obs_id	317
title	EARLY TYPE GALAXIES
observer	Dr. Stephen Murray
object	NGC 507
dtcycle	0
cycle	P
ra_targ	20.9125
dec_targ	33.256667
ra_nom	20.901311662761
dec_nom	33.259780944569
roll_nom	171.90293636721
revision	2
ontime	27193.600025326
livetime	26849.258287785
ontime0	27190.359065086
ontime2	27193.600025326
ontime3	27193.600025326
ontime5	27193.600025326
ontime6	27193.600025326
ontime7	27193.600025326
l2events	418591



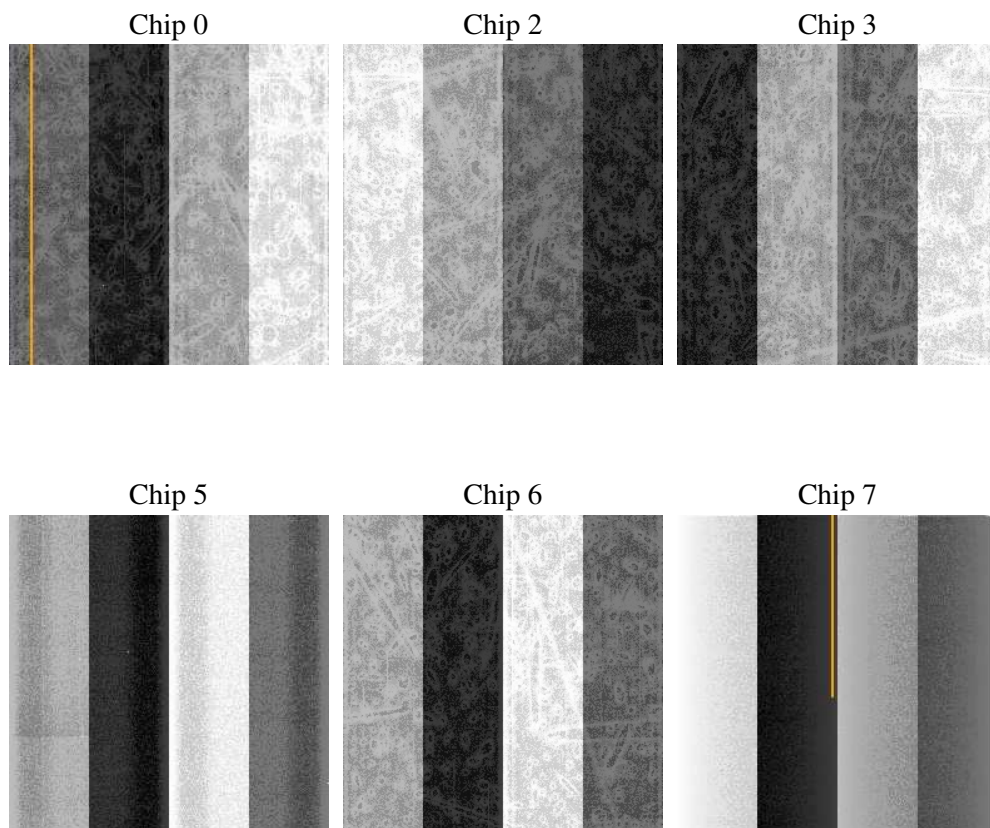
## 2 OBI

### 2.1 OBI

#### 2.1.1 Images



#### 2.1.2 Bias



### 2.1.3 Parameters

obi_num	0
ascdsver	7.6.10
caldsver	3.4.0
date	2007-06-12T07:36:27
revision	2

sched_exp_time	27000.000000
ontime	27193.600025326
ontime0	27190.359065086
ontime2	27193.600025326
ontime3	27193.600025326
ontime5	27193.600025326
ontime6	27193.600025326
ontime7	27193.600025326
l1events	1303512

### 2.1.4 Events

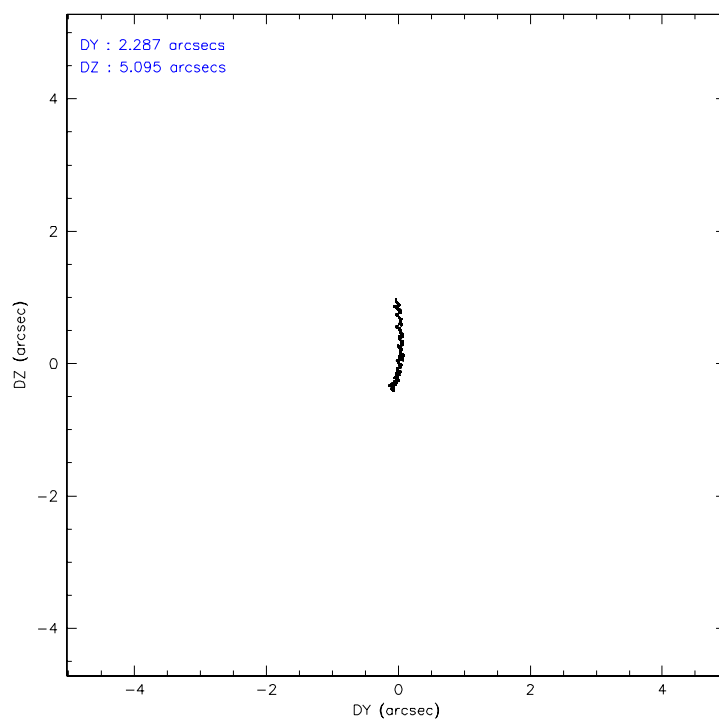
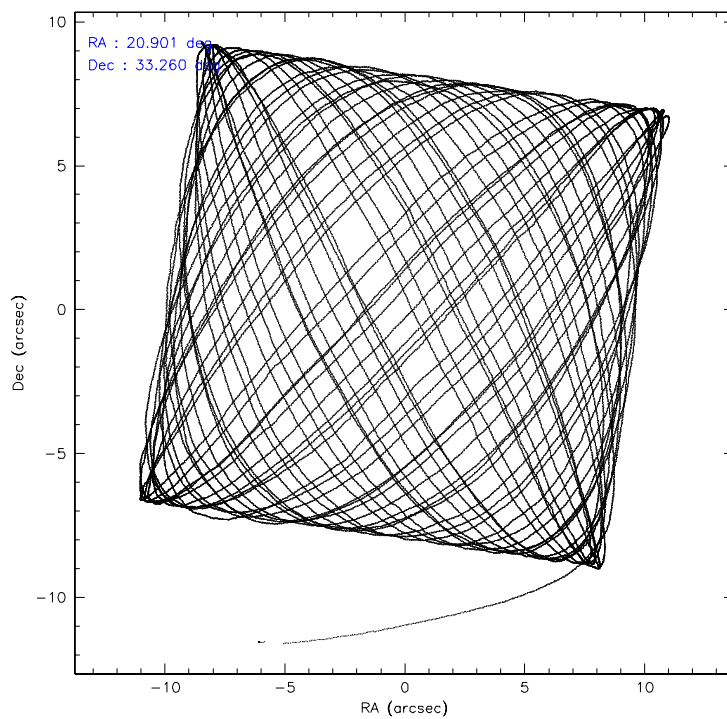
	ccd 0	ccd 2	ccd 3	ccd 5	ccd 6	ccd 7
level 1 events	167605	182481	172170	288428	186624	306204
rejected events	145248	149783	148331	131227	155367	123305
rejected %	86%	82%	86%	45%	83%	40%

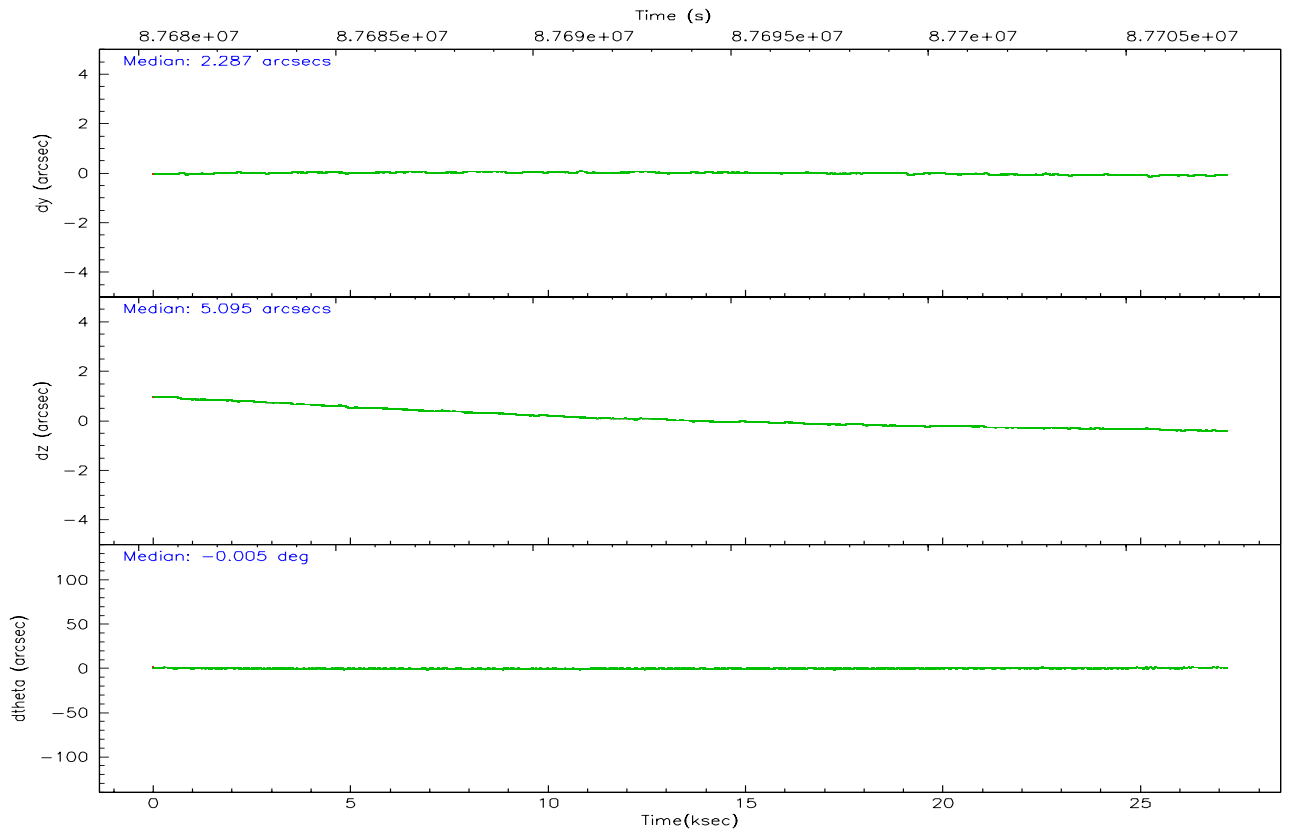
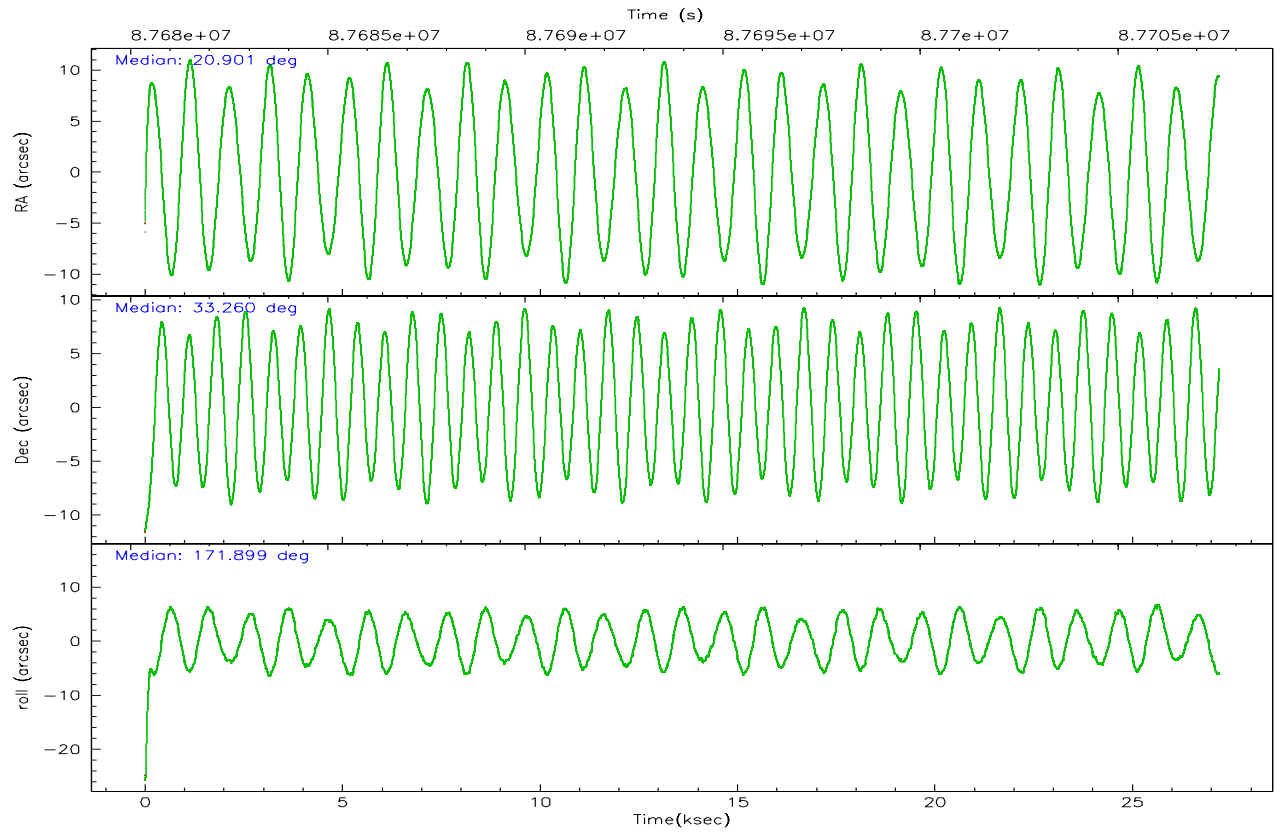
	ccd 0	ccd 2	ccd 3	ccd 5	ccd 6	ccd 7
grade 0 events	10312	19821	12234	26070	17956	30334
	6%	10%	7%	9%	9%	9%
grade 1 events	93	111	88	268	98	215
	0%	0%	0%	0%	0%	0%
grade 2 events	4596	5358	4310	45084	5139	38973
	2%	2%	2%	15%	2%	12%
grade 3 events	1997	2043	1939	7882	2136	17603
	1%	1%	1%	2%	1%	5%
grade 4 events	1861	2032	1915	7411	2164	17542
	1%	1%	1%	2%	1%	5%
grade 5 events	6121	5688	6248	19682	6925	20603
	3%	3%	3%	6%	3%	6%
grade 6 events	3602	3461	3449	70807	3878	78522
	2%	1%	2%	24%	2%	25%
grade 7 events	139023	143967	141987	111224	148328	102412
	82%	78%	82%	38%	79%	33%

## 2.2 Compared Parameters

Parameter	Planned	Actual	Parameter	Planned	Actual
Instrument	ACIS	ACIS	Obspar format version number	6	6
Detector	ACIS-023567	ACIS-023567	Obspar file type	PREDICTED	ACTUAL
Grating	NONE	NONE	Obspar update status	NONE	UPDATED
Data mode	FAINT	FAINT	Number of optional ACIS chips dropped	0	0
Observation mode	POINTING	POINTING	On-chip summing requested	N	N
Pointing RA	20.931569	20.90131166276059	Subarray requested	NONE	NONE
Pointing Dec	33.270186	33.25978094456868	Alternating exposures requested	N	N
Pointing Roll	171.729748	171.9029363672103	Primary exposure time	3.200000	3.2
SIM focus pos (mm)	-0.684267	-0.6828225247311905			
SIM defocus (mm)	0	0.001444936568705701			
SIM translation stage pos (mm)	-190.132523	-190.1425803651734			
SIM translation stage offset (mm)	0	0.01005778216563158			
Observation start time	87680566.184000	87679481.371823			
Observation start date	2000-10-11T19:41:42	2000-10-11T19:24:41			
Observation end time	87707566.184000	87708016.86040001			
Observation end date	2000-10-12T03:11:42	2000-10-12T03:20:16			
Read mode	TIMED	TIMED			

## 2.3 Aspect





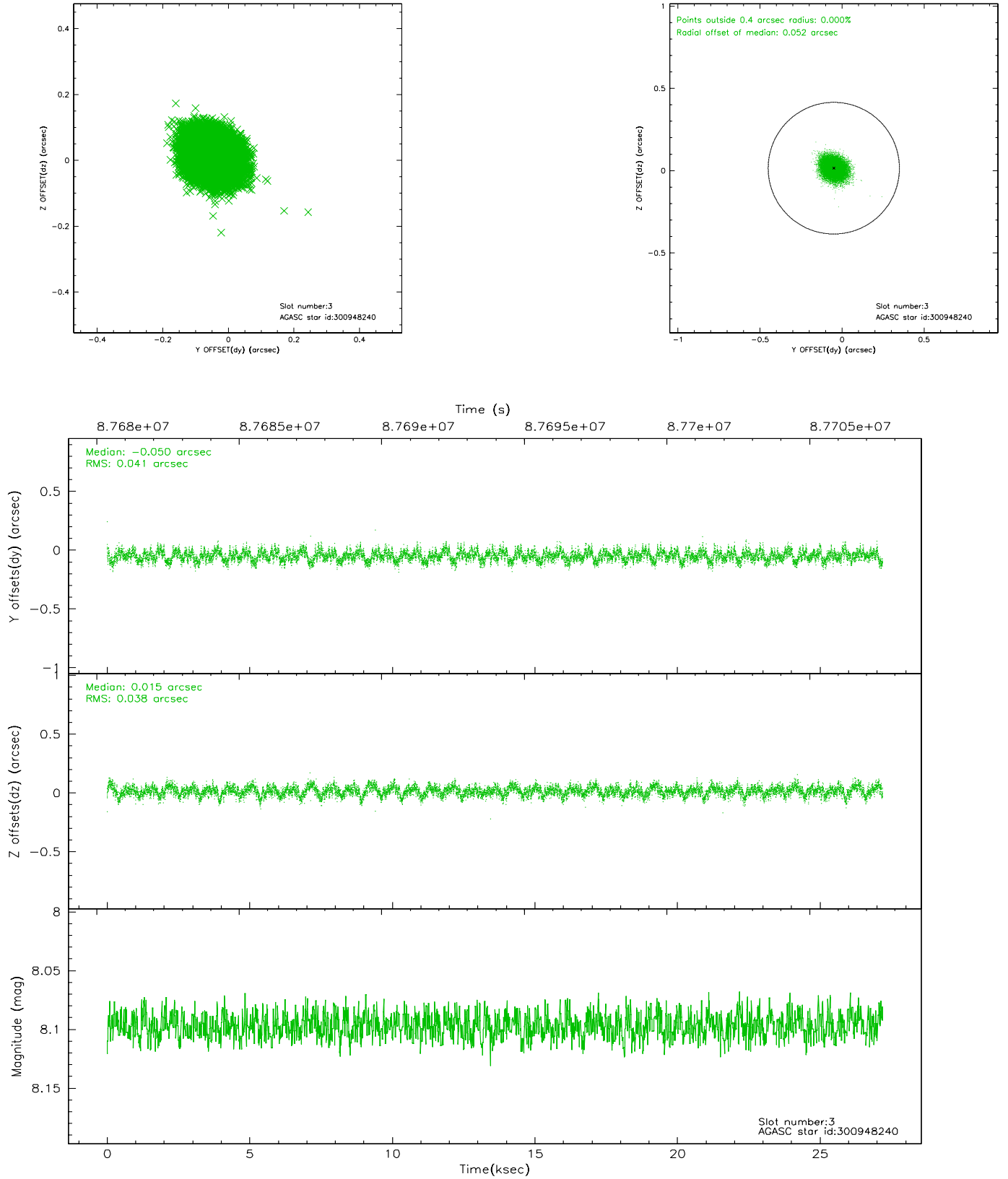
### Slot Statistics

slot	status	id	mag	n_pts	med_dy	med_dz	dr1	dr2	ra	dec	mean_y	mean_z
0	FID	ACIS-S-2	7.11	6633	-0.000	0.004	0.006	0.010	0.000000	0.000000	-754.87	-1726.28
1	FID	ACIS-S-4	7.21	6633	-0.020	-0.001	0.007	0.012	0.000000	0.000000	2158.31	182.14
2	FID	ACIS-S-6	7.36	6634	-0.008	0.005	0.009	0.014	0.000000	0.000000	407.19	819.63
3	GUIDE	300948240	8.10	13267	-0.050	0.015	0.061	0.096	21.318271	32.949093	-1322.74	974.32
4	GUIDE	300941832	8.94	13262	0.036	-0.121	0.064	0.108	20.525278	33.237138	1193.22	292.06
5	GUIDE	300945960	9.31	13262	-0.064	0.074	0.082	0.132	20.665202	33.720044	1021.96	-1488.13
6	GUIDE	300948808	9.41	13207	0.185	-0.036	0.084	0.135	21.520899	32.844070	-1984.34	1257.13
7	GUIDE	300818240	9.57	13257	-0.108	0.072	0.092	0.152	20.083372	33.011069	2400.30	1282.21

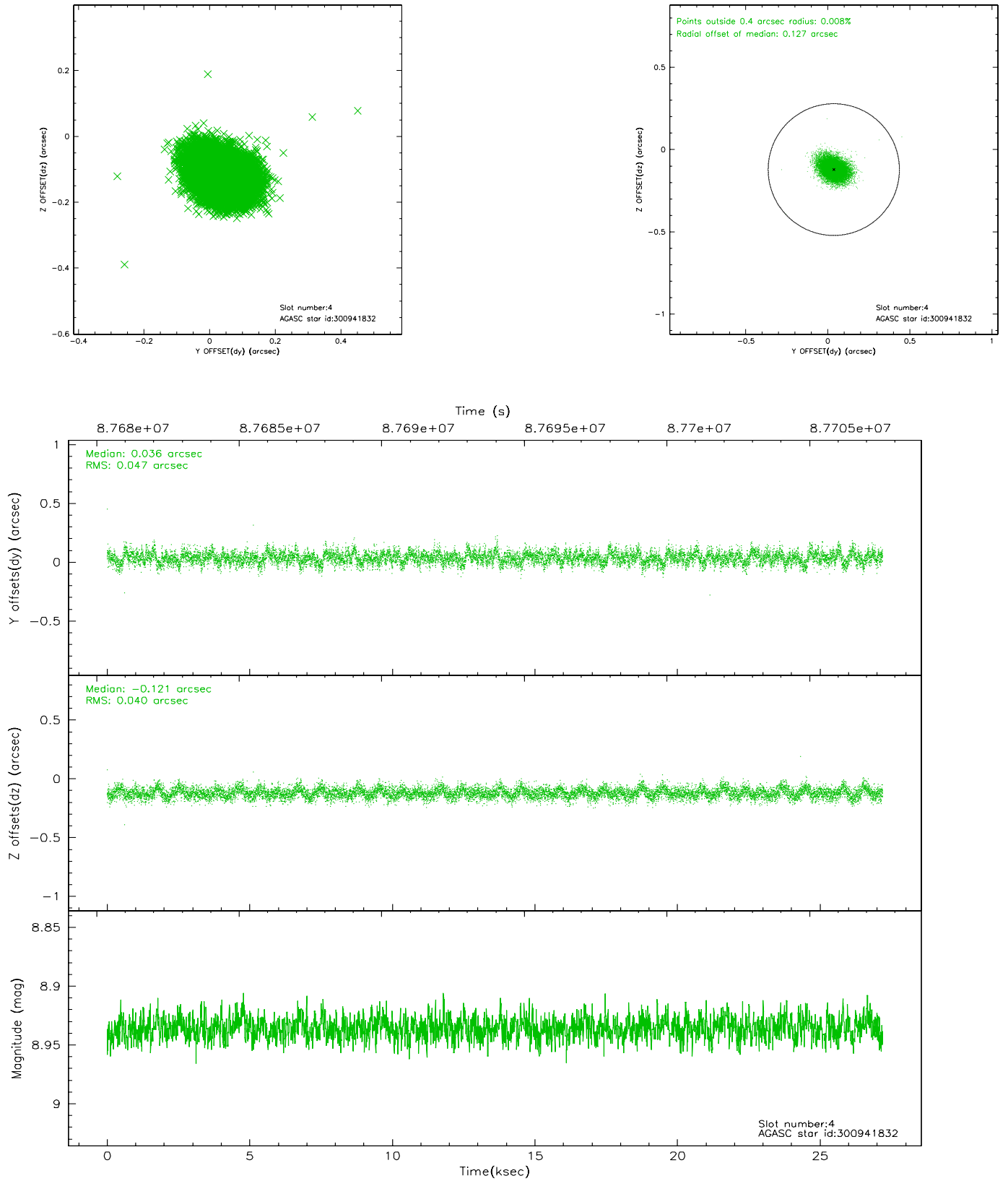


## 2.4 Star Slots

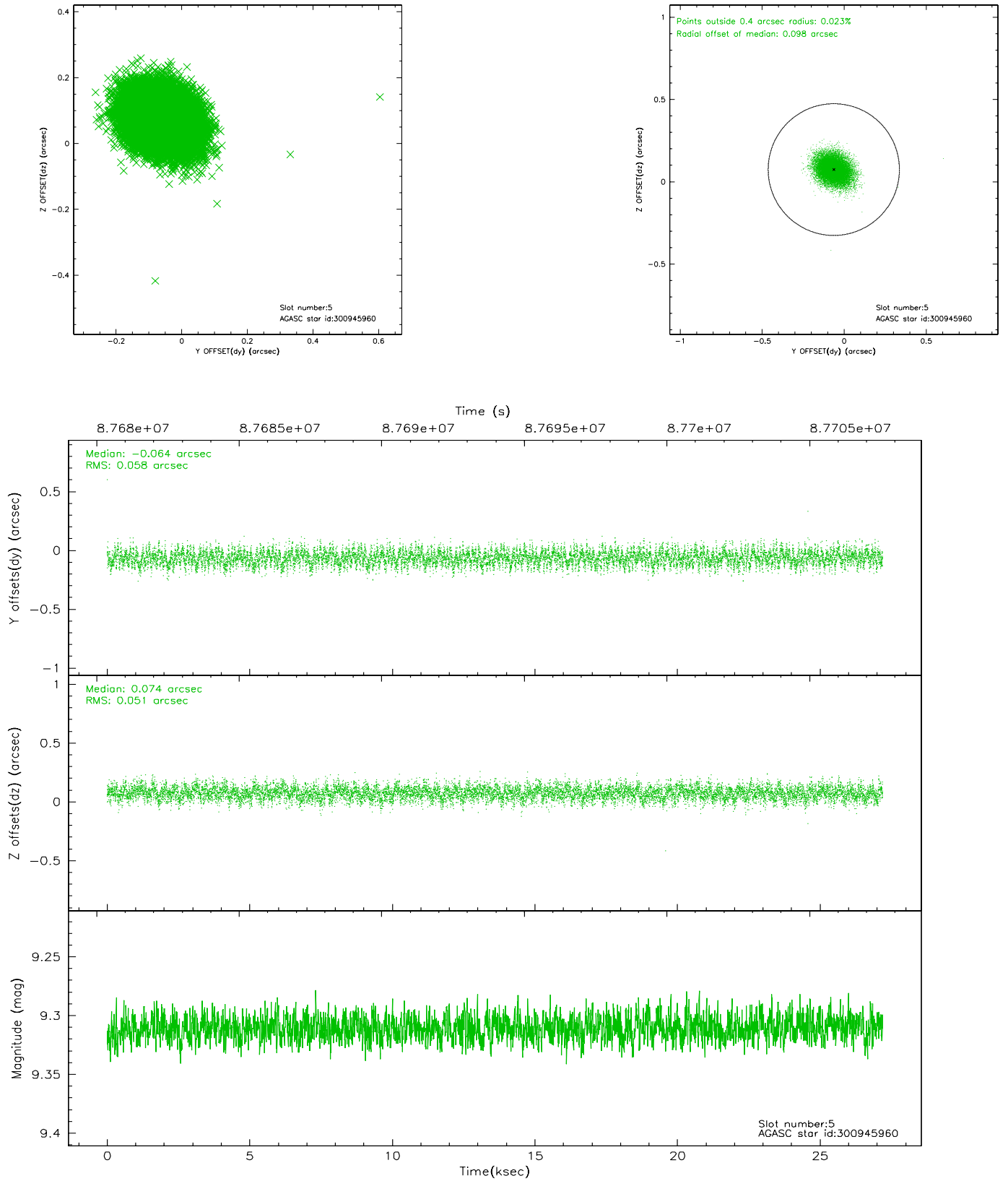
### 2.4.1 Slot 3



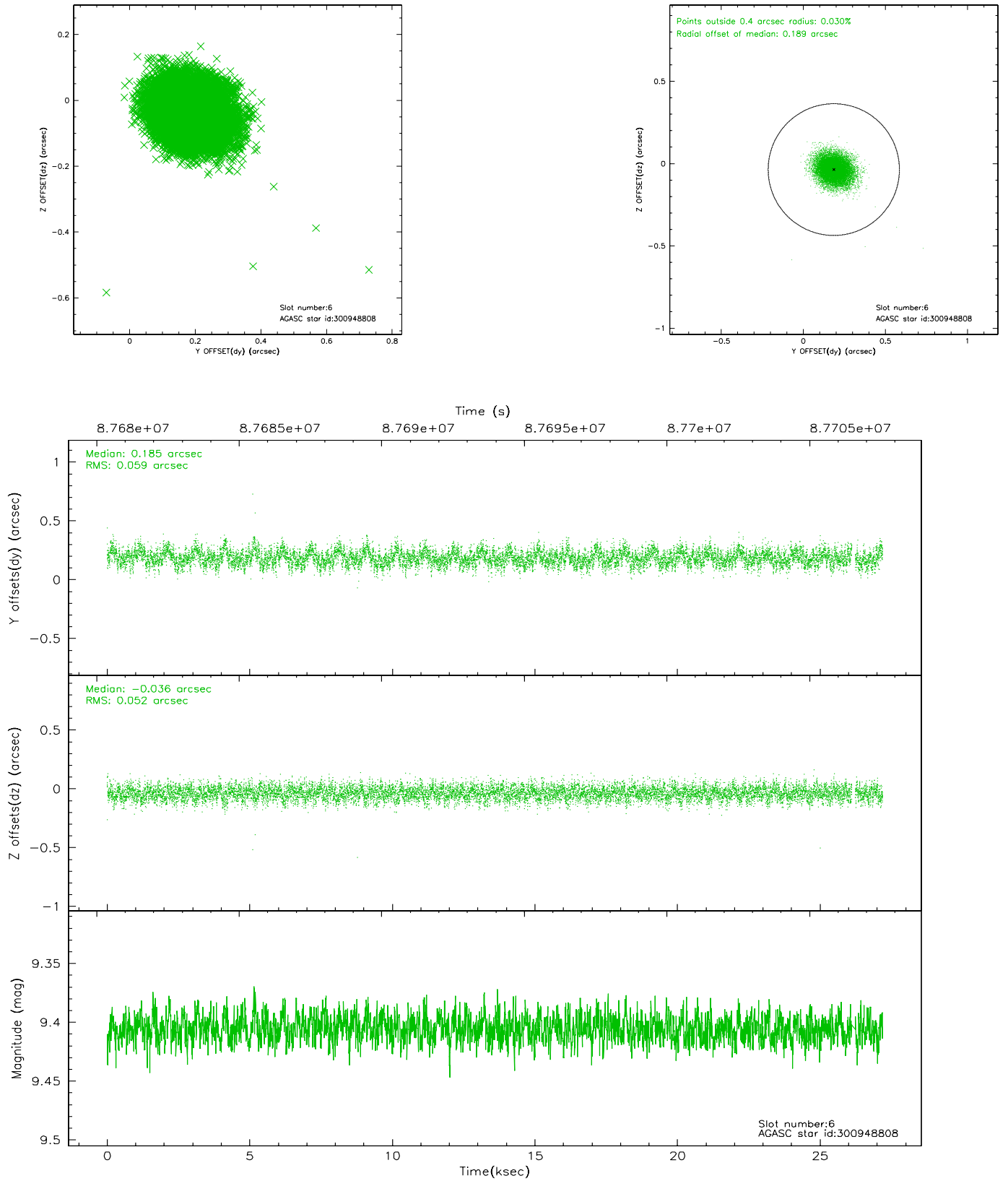
## 2.4.2 Slot 4



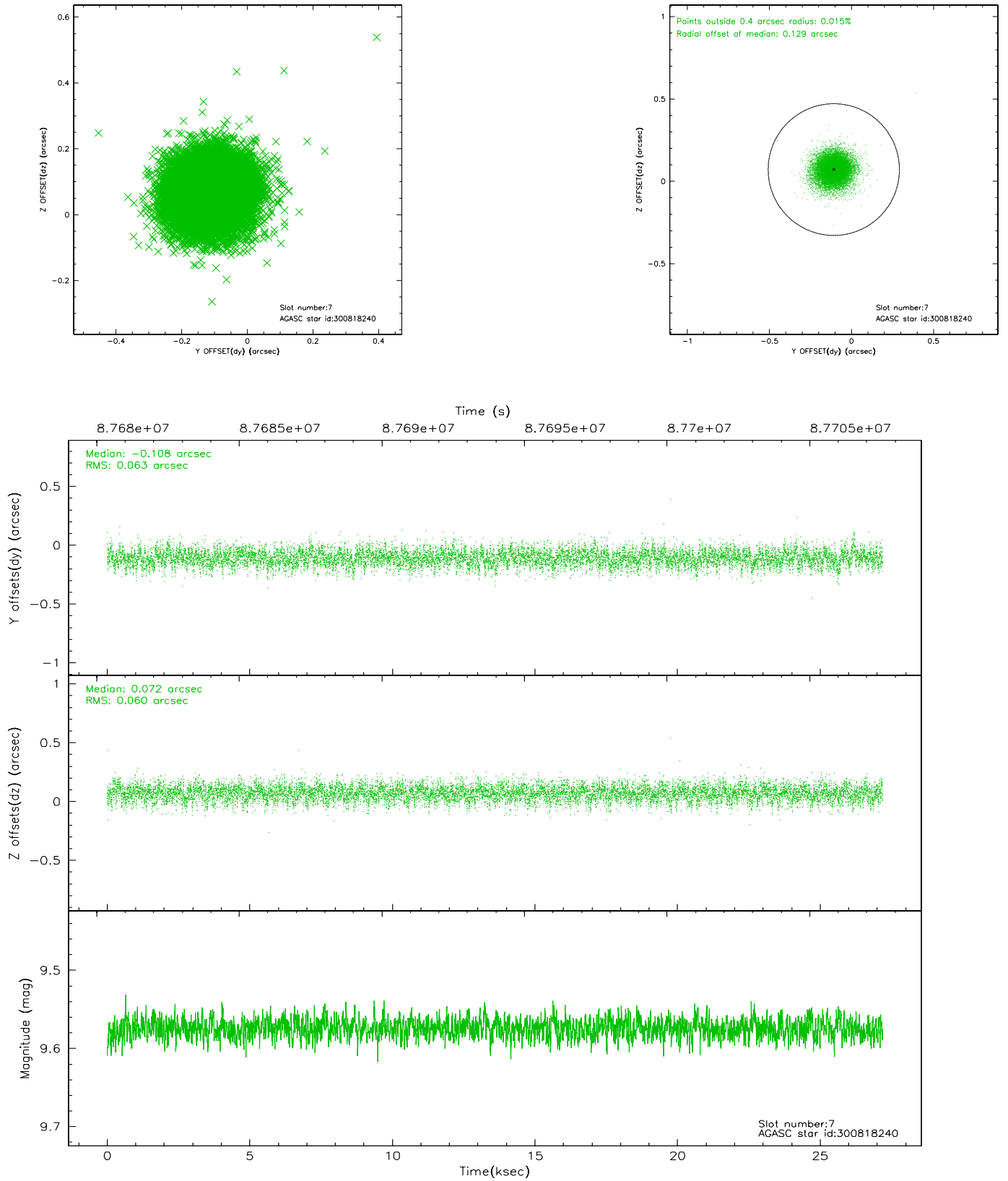
### 2.4.3 Slot 5



## 2.4.4 Slot 6

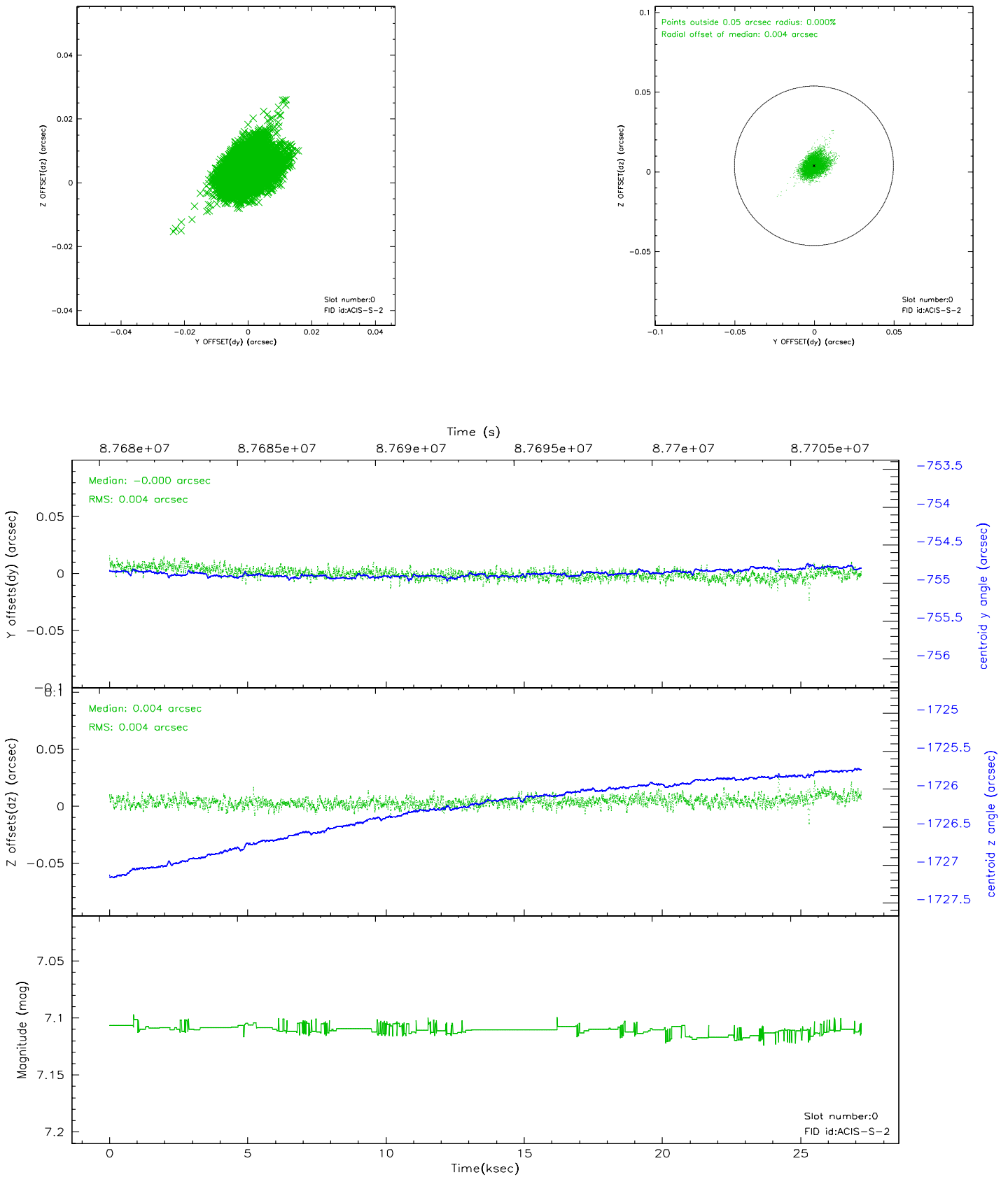


## 2.4.5 Slot 7

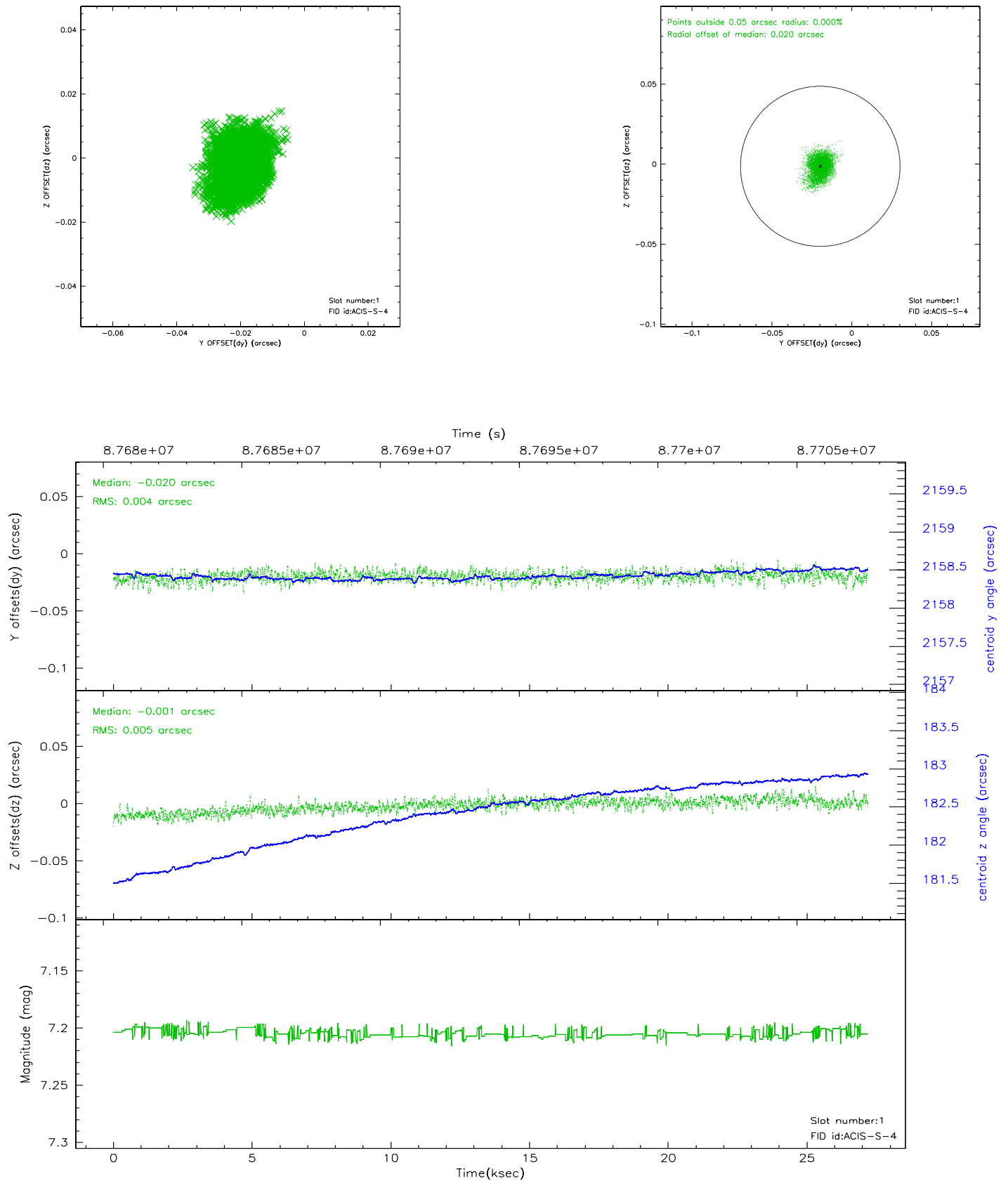


## 2.5 FID Slots

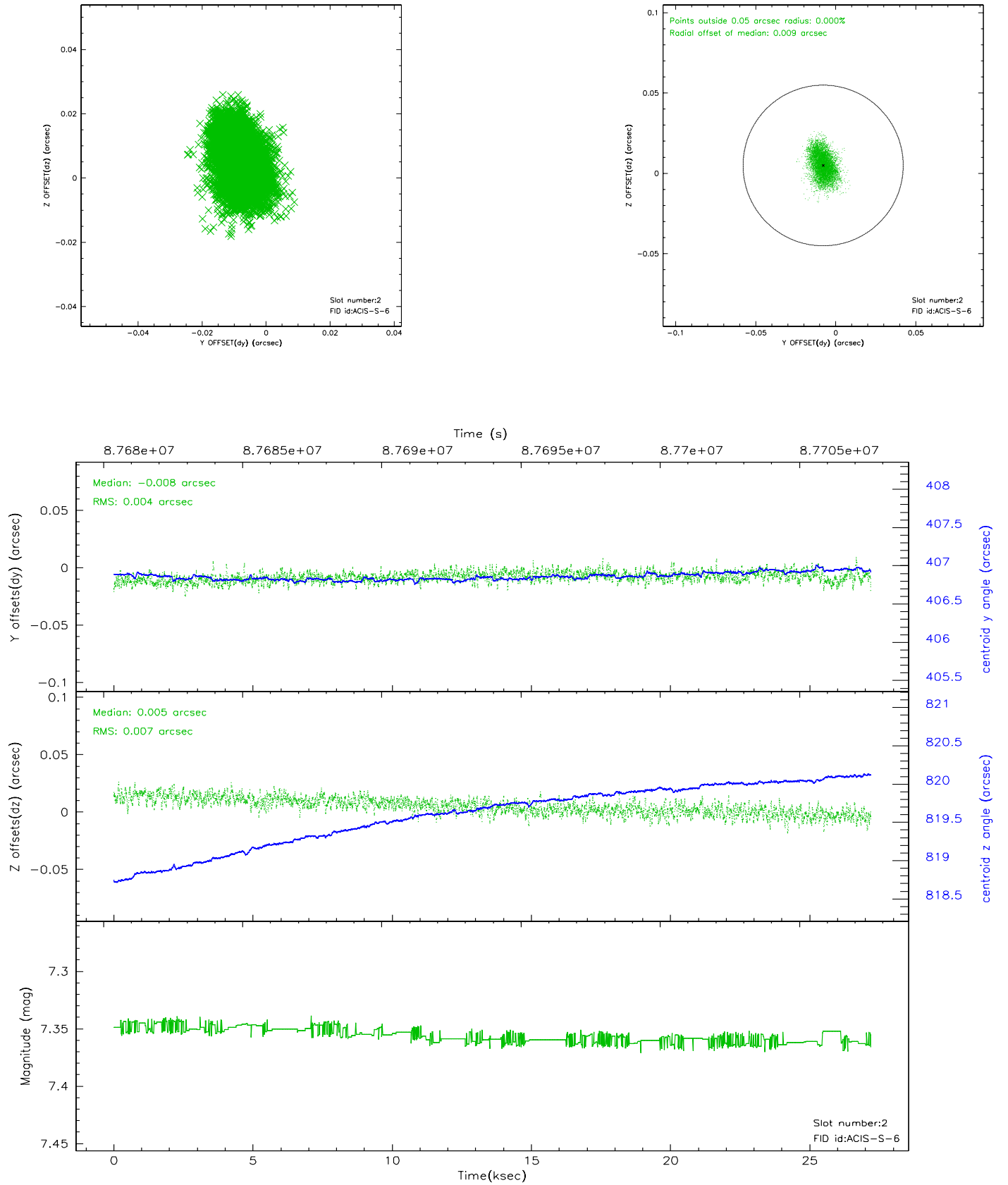
### 2.5.1 Slot 0



## 2.5.2 Slot 1

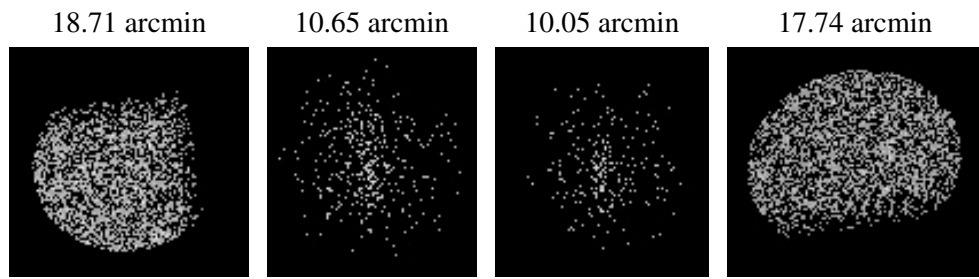


### 2.5.3 Slot 2





### 3 Point Sources



## A Summary

### A.1 Status

V&V Scientist	Jen Lauer
V&V Date (YYYY-MM-DD)	2007.06.12
V&V Edition	1
V&V Disposition and Status	OK
V&V Charge Time	27.193

### A.2 Comments