

# V&V Reference Report

## L2 ASCDS Version : 7.6.10

Observation 781 - L2 Version 001  
Chandra X-Ray Center

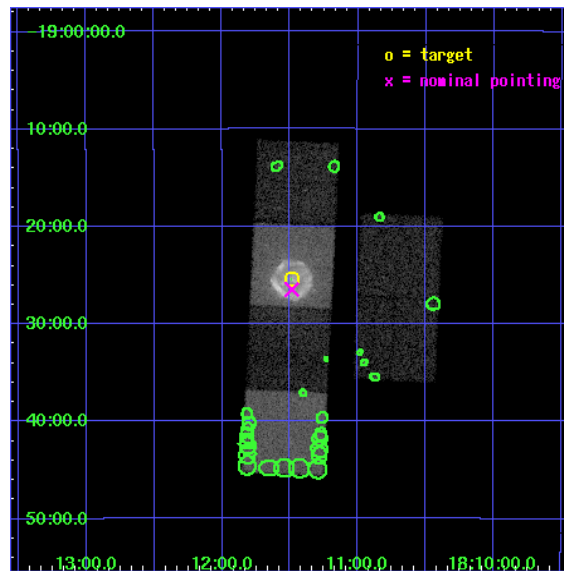
L2 Processing Date : Jun 12 2007

## Contents

<b>1</b>	<b>Front</b>	<b>2</b>
<b>2</b>	<b>OBI</b>	<b>3</b>
2.1	OBI . . . . .	3
2.1.1	Images . . . . .	3
2.1.2	Bias . . . . .	3
2.1.3	Parameters . . . . .	4
2.1.4	Events . . . . .	4
2.2	Compared Parameters . . . . .	5
2.3	Aspect . . . . .	6
2.4	Star Slots . . . . .	9
2.4.1	Slot 3 . . . . .	9
2.4.2	Slot 4 . . . . .	10
2.4.3	Slot 5 . . . . .	11
2.4.4	Slot 6 . . . . .	12
2.4.5	Slot 7 . . . . .	13
2.5	FID Slots . . . . .	14
2.5.1	Slot 0 . . . . .	14
2.5.2	Slot 1 . . . . .	15
2.5.3	Slot 2 . . . . .	16
<b>3</b>	<b>Point Sources</b>	<b>17</b>
<b>A</b>	<b>Summary</b>	<b>18</b>
A.1	Status . . . . .	18
A.2	Comments . . . . .	18

# 1 Front

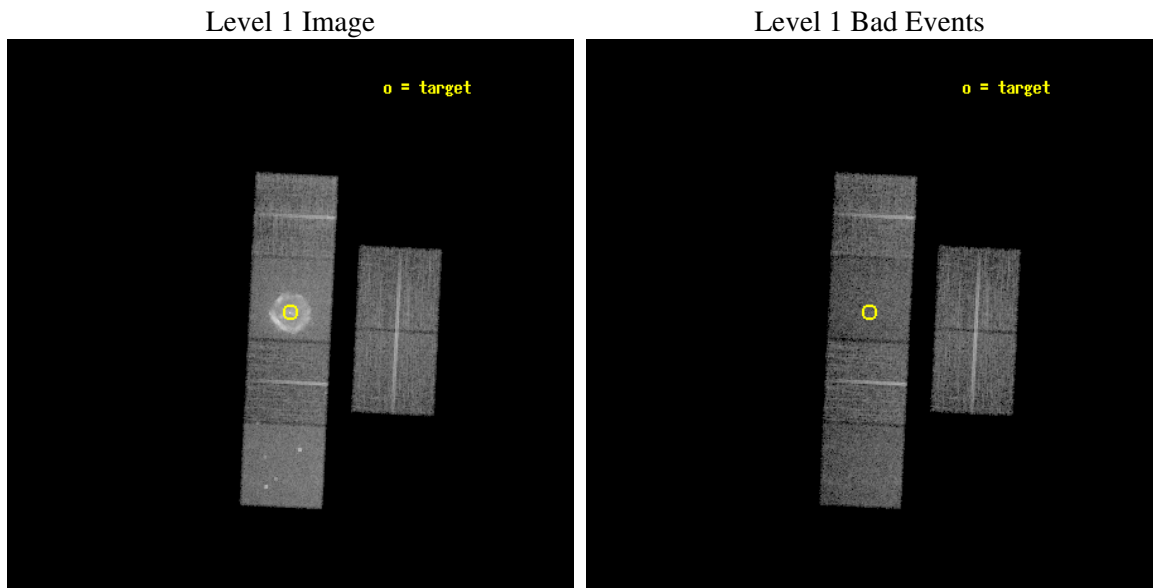
seq_num	500077
obs_id	781
title	THE HISTORIC SUPERNOVA REMNANT SYSTEM - G11.2-0.3
observer	Professor Victoria Kaspi
object	G11.2-0.3
dtcycle	0
cycle	P
ra_targ	272.8725
dec_targ	-19.423611
ra_nom	272.87153785381
dec_nom	-19.441230514776
roll_nom	272.77042588177
revision	2
ontime	10102.359049156
livetime	9974.4368959656
ontime2	10102.359049156
ontime3	10102.359049156
ontime5	10102.359049156
ontime6	10102.359049156
ontime7	10102.359049156
ontime8	10102.359049156
l2events	159037



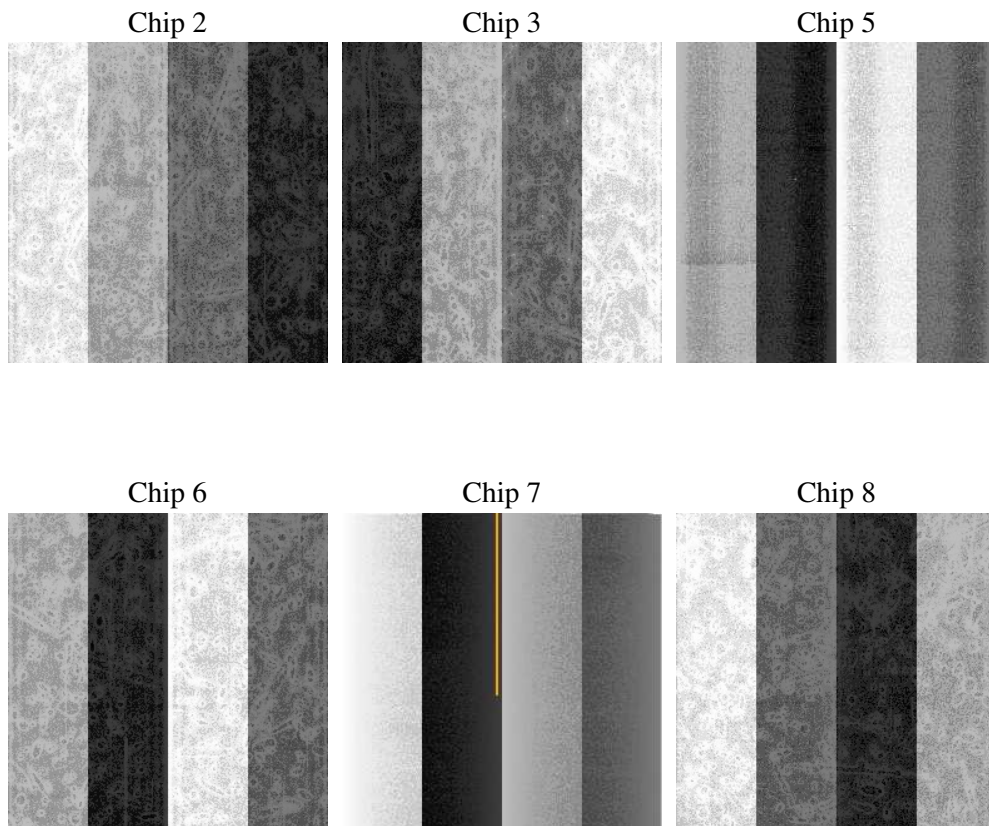
## 2 OBI

### 2.1 OBI

#### 2.1.1 Images



#### 2.1.2 Bias



### 2.1.3 Parameters

obi_num	1
ascdsver	7.6.10
caldbver	3.4.0
date	2007-06-12T09:57:52
revision	2

sched_exp_time	10000.000000
ontime	10102.359049156
ontime2	10102.359049156
ontime3	10102.359049156
ontime5	10102.359049156
ontime6	10102.359049156
ontime7	10102.359049156
ontime8	10102.359049156
l1events	503588

### 2.1.4 Events

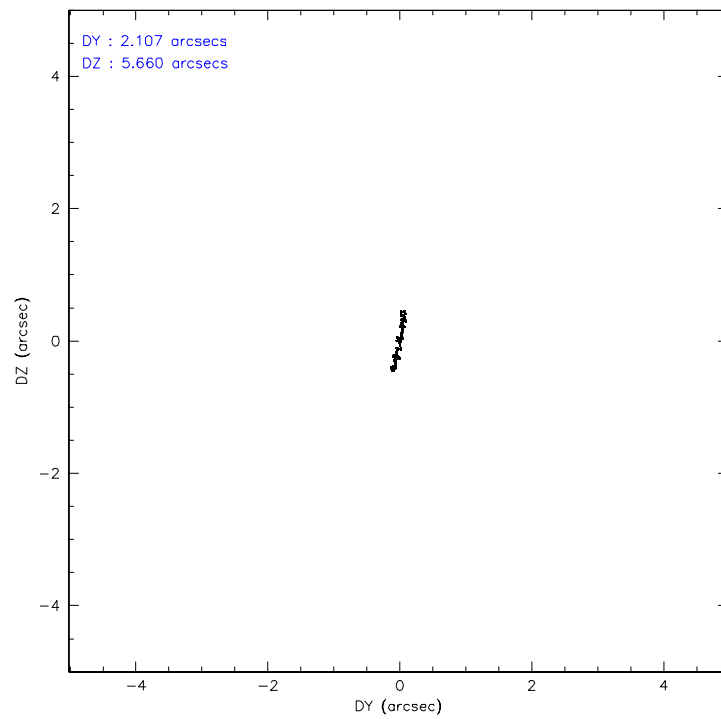
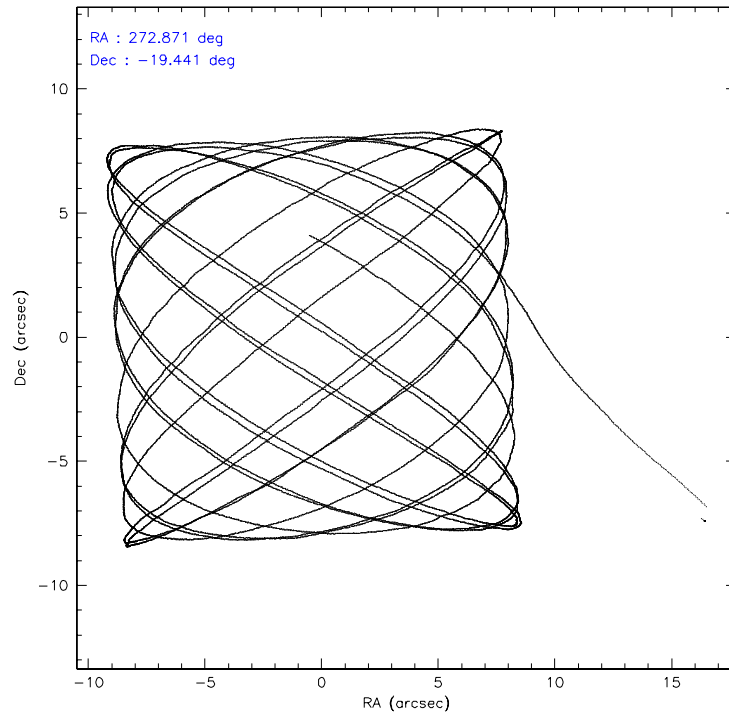
	ccd 2	ccd 3	ccd 5	ccd 6	ccd 7	ccd 8
level 1 events	67464	65650	86803	66446	137401	79824
rejected events	59291	57385	46077	57014	46007	62332
rejected %	87%	87%	53%	85%	33%	78%

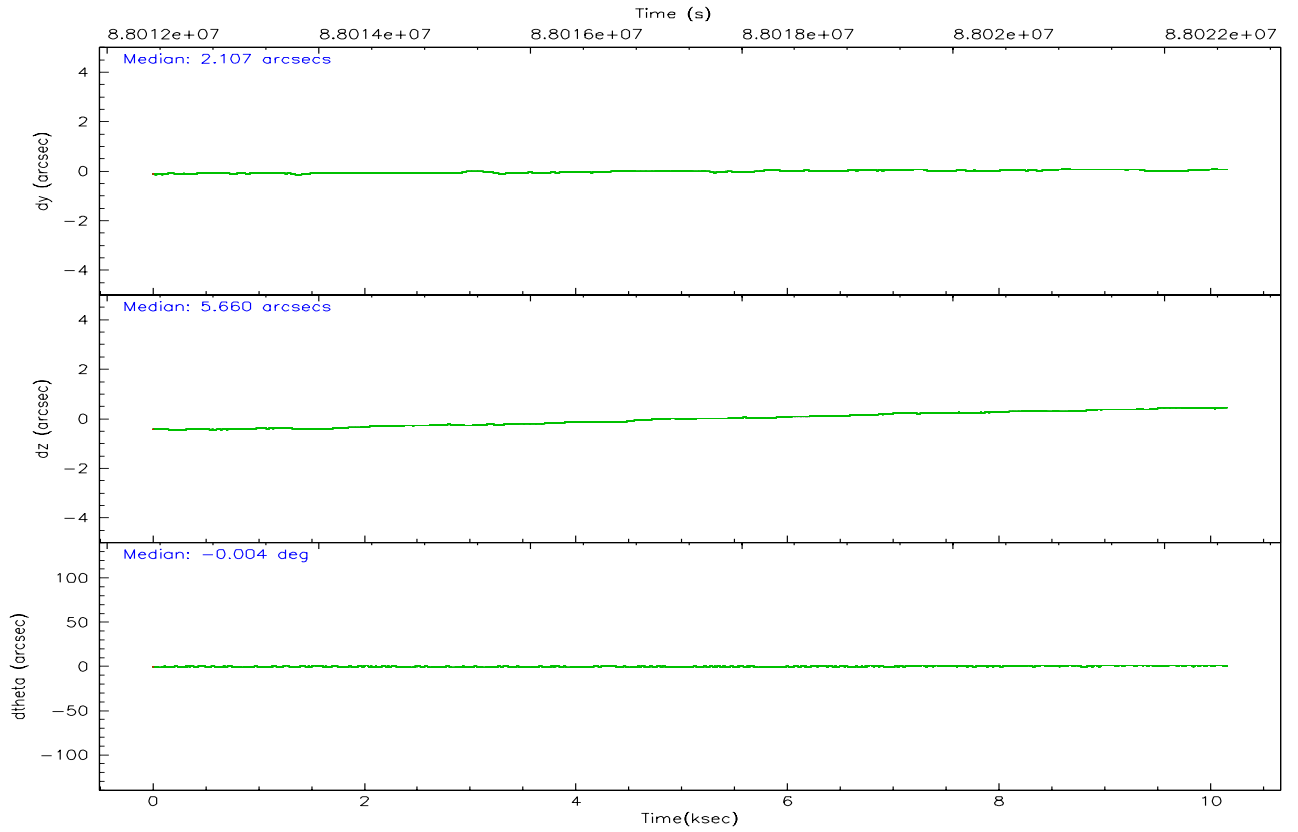
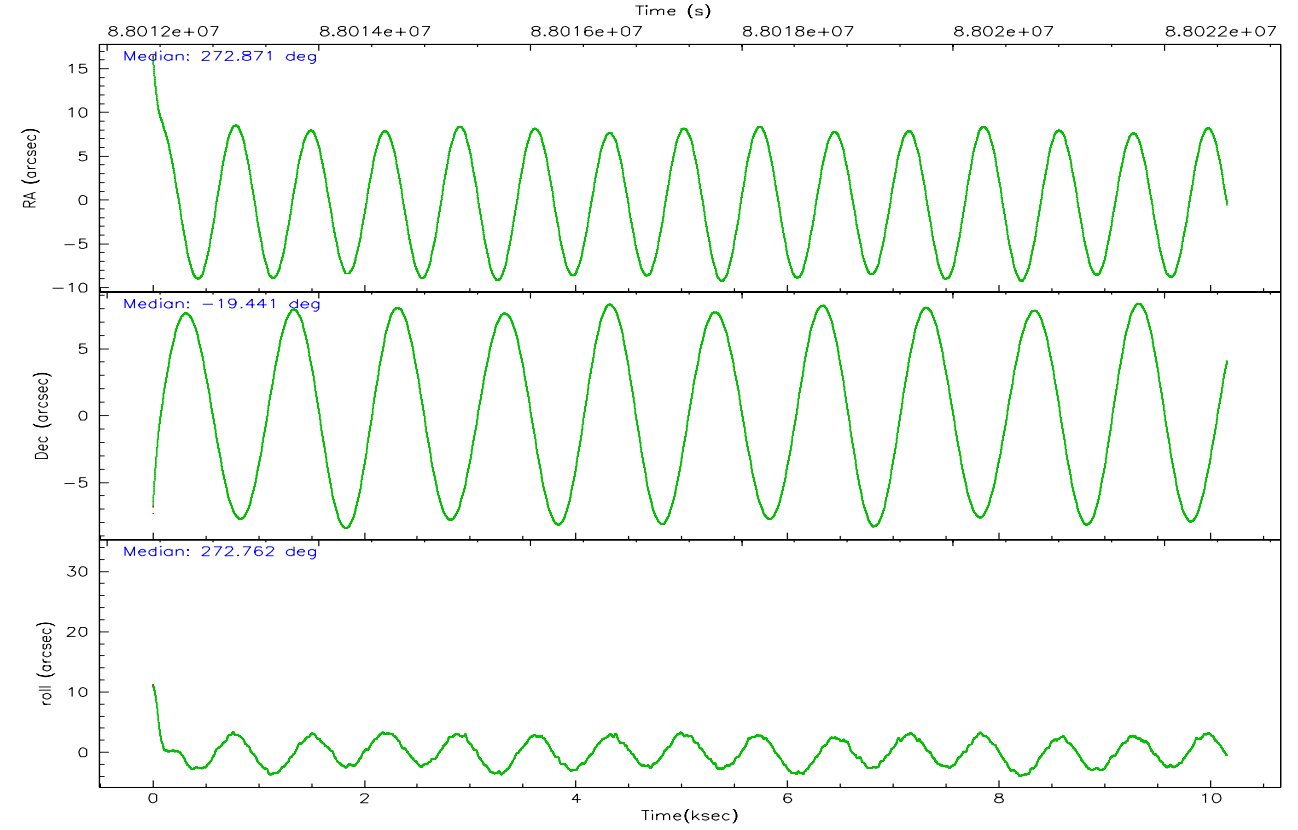
	ccd 2	ccd 3	ccd 5	ccd 6	ccd 7	ccd 8
grade 0 events	3923	4121	5247	4747	17984	6370
	5%	6%	6%	7%	13%	7%
grade 1 events	34	35	152	39	92	48
	0%	0%	0%	0%	0%	0%
grade 2 events	1580	1451	11315	1716	22196	3574
	2%	2%	13%	2%	16%	4%
grade 3 events	684	679	1877	845	10070	1735
	1%	1%	2%	1%	7%	2%
grade 4 events	689	694	1825	750	9865	1627
	1%	1%	2%	1%	7%	2%
grade 5 events	2059	2365	6598	2666	7933	3105
	3%	3%	7%	4%	5%	3%
grade 6 events	1302	1321	20472	1377	31301	4187
	1%	2%	23%	2%	22%	5%
grade 7 events	57193	54984	39317	54306	37960	59178
	84%	83%	45%	81%	27%	74%

## 2.2 Compared Parameters

Parameter	Planned	Actual	Parameter	Planned	Actual
Instrument	ACIS	ACIS	Obspar format version number	6	6
Detector	ACIS-235678	ACIS-235678	Obspar file type	PREDICTED	ACTUAL
Grating	NONE	NONE	Obspar update status	NONE	UPDATED
Data mode	FAINT	FAINT	Number of optional ACIS chips dropped	0	0
Observation mode	POINTING	POINTING	On-chip summing requested	N	N
Pointing RA	272.855615	272.8715378538089	Subarray requested	NONE	NONE
Pointing Dec	-19.418332	-19.44123051477575	Alternating exposures requested	N	N
Pointing Roll	272.608488	272.7704258817667	Primary exposure time	0.000000	3.2
SIM focus pos (mm)	-0.684267	-0.6828225247311905			
SIM defocus (mm)	0	0.001444936568705701			
SIM translation stage pos (mm)	-190.132523	-190.1400660498719			
SIM translation stage offset (mm)	0	0.00754346686406393			
Observation start time	88012589.184000	88011553.196859			
Observation start date	2000-10-15T15:55:25	2000-10-15T15:39:13			
Observation end time	88022589.184000	88023442.684808			
Observation end date	2000-10-15T18:42:05	2000-10-15T18:57:22			
Read mode	TIMED	TIMED			

## 2.3 Aspect





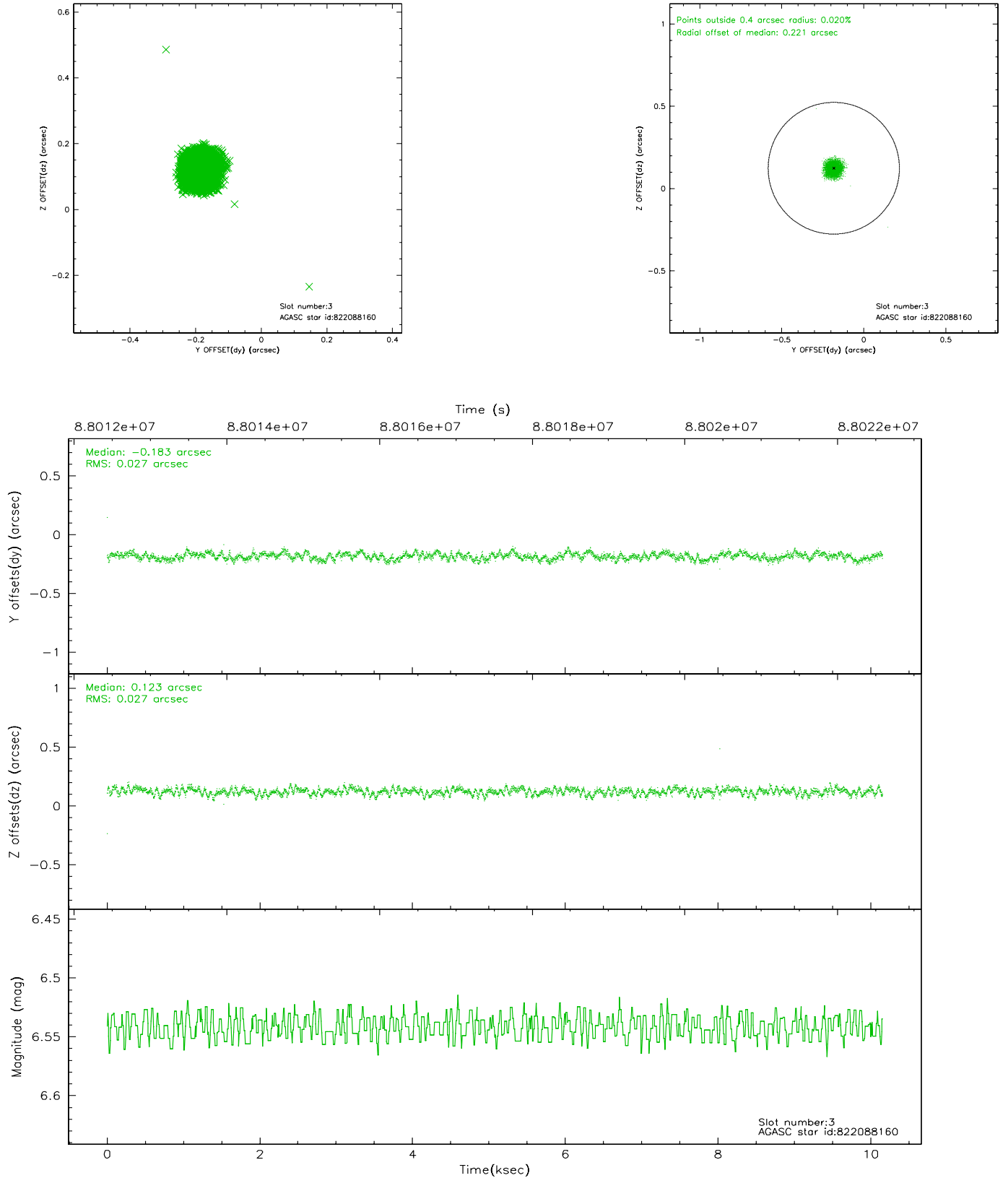
### Slot Statistics

slot	status	id	mag	n_pts	med_dy	med_dz	dr1	dr2	ra	dec	mean_y	mean_z
0	FID	ACIS-S-3	7.36	2477	-0.079	-0.024	0.017	0.027	0.000000	0.000000	58.43	-1855.86
1	FID	ACIS-S-4	7.20	2476	-0.024	0.054	0.011	0.016	0.000000	0.000000	2158.64	181.19
2	FID	ACIS-S-5	7.24	2477	0.075	-0.019	0.010	0.016	0.000000	0.000000	-1806.81	175.41
3	GUIDE	822088160	6.54	4953	-0.183	0.123	0.040	0.063	272.729284	-18.869551	-1993.70	-339.92
4	GUIDE	822099792	7.17	4953	-0.042	-0.006	0.056	0.089	273.061248	-19.432823	83.19	695.18
5	GUIDE	822091704	8.09	4950	-0.172	-0.145	0.058	0.094	272.220028	-18.943658	-1802.10	-2084.44
6	GUIDE	822101160	8.46	4951	0.264	-0.095	0.063	0.111	272.245889	-20.018987	2069.64	-2158.92
7	GUIDE	822098064	8.27	4949	0.132	0.128	0.049	0.079	273.233974	-19.745214	1235.13	1227.18

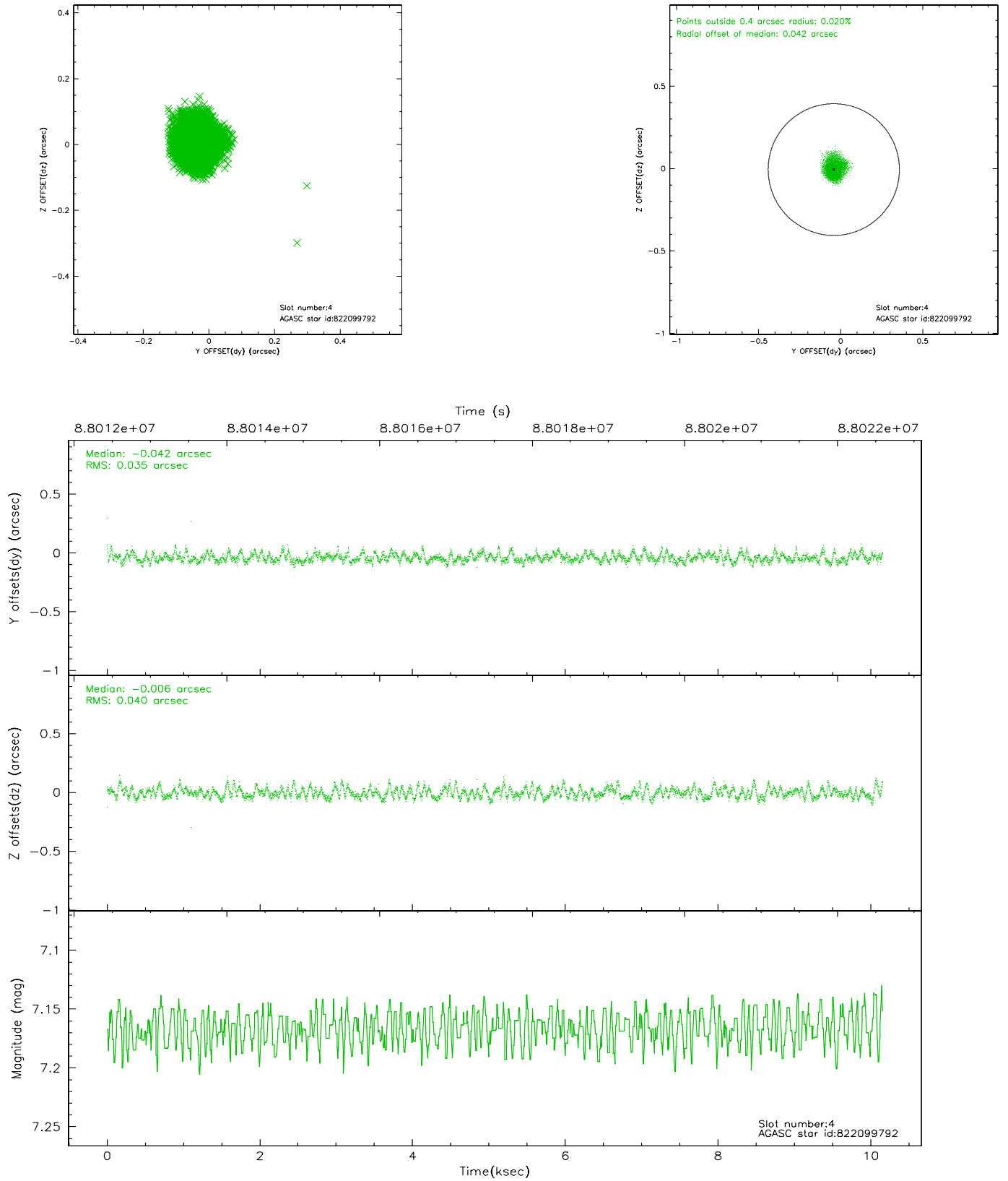


## 2.4 Star Slots

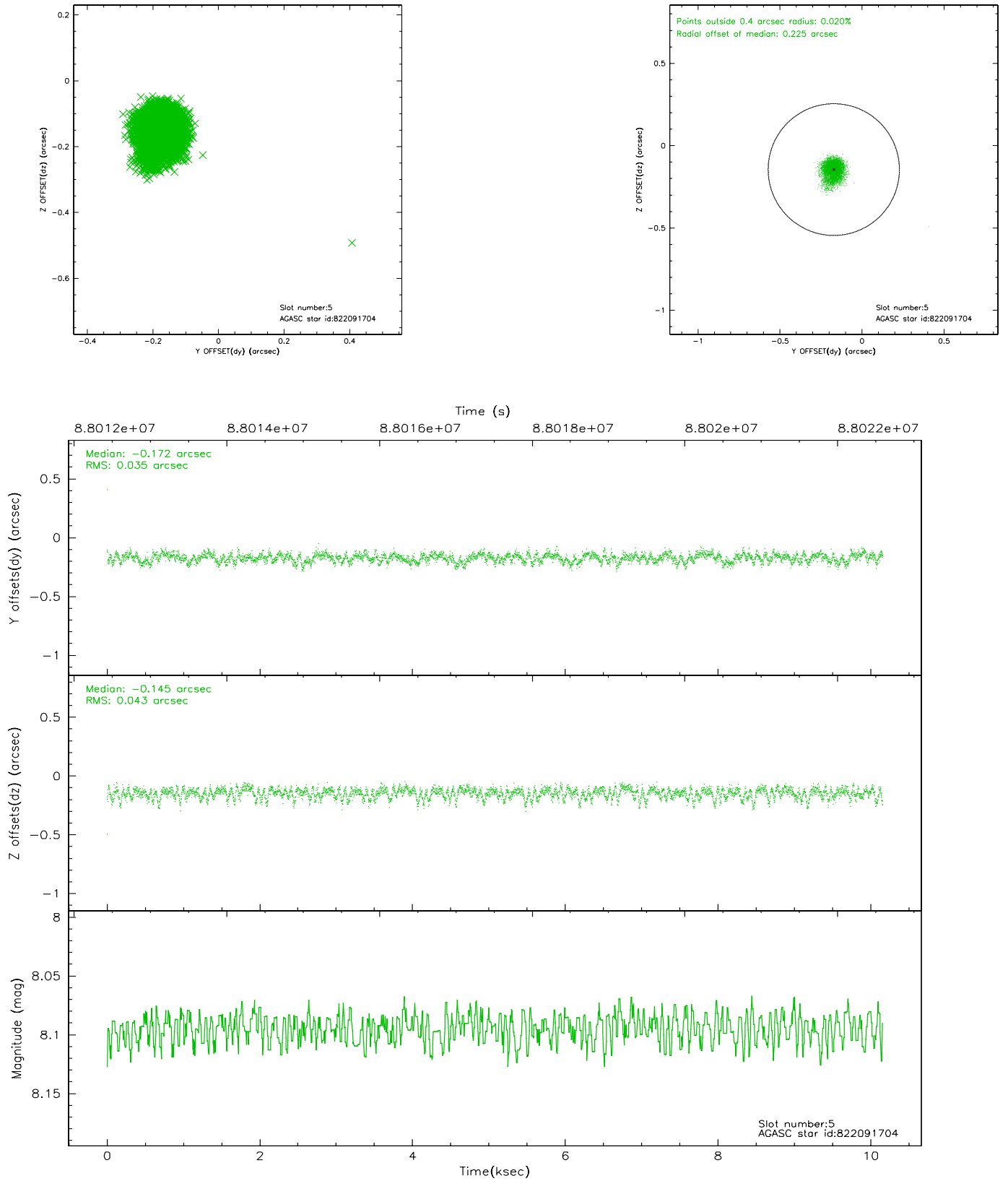
### 2.4.1 Slot 3



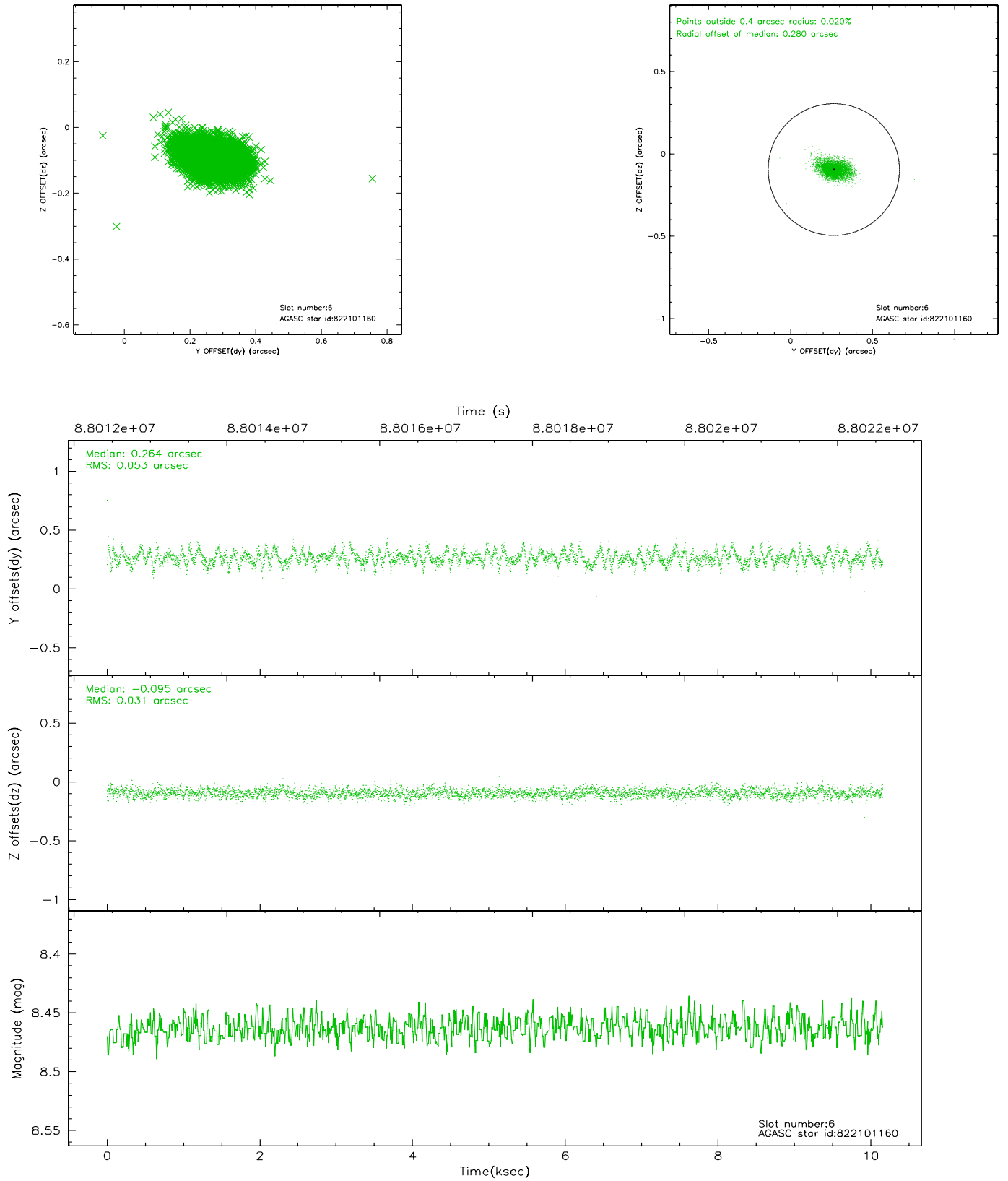
## 2.4.2 Slot 4



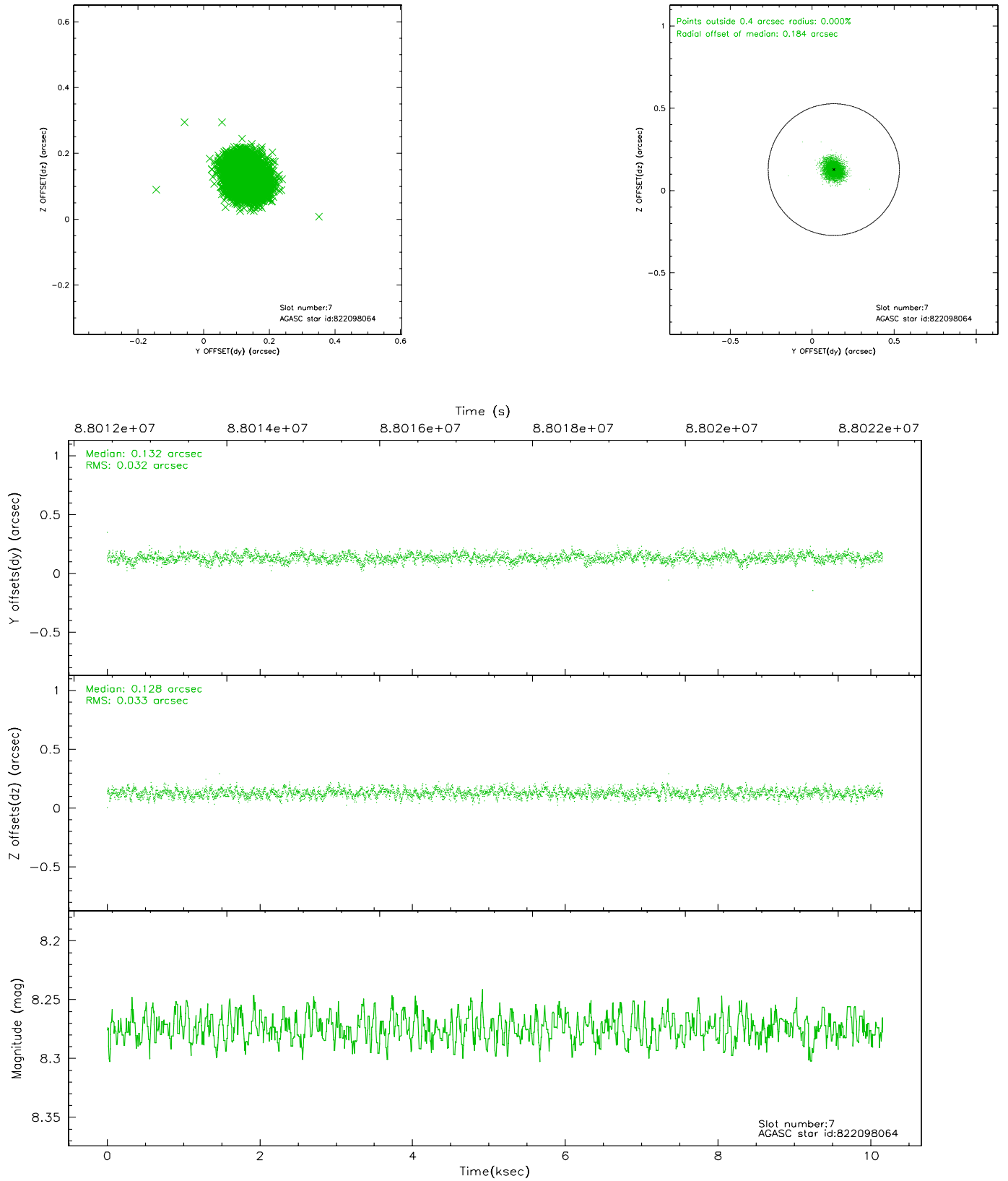
### 2.4.3 Slot 5



## 2.4.4 Slot 6

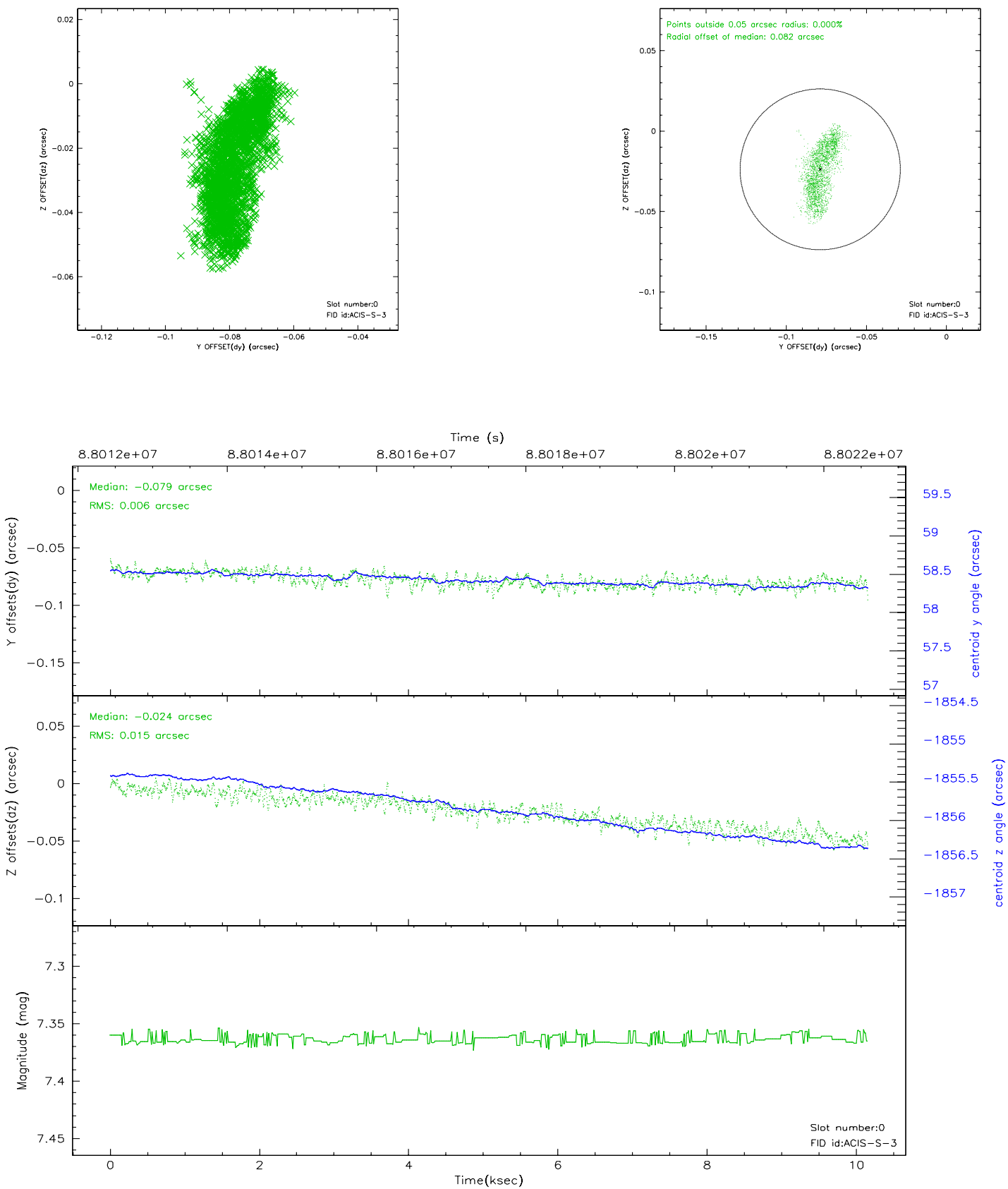


## 2.4.5 Slot 7

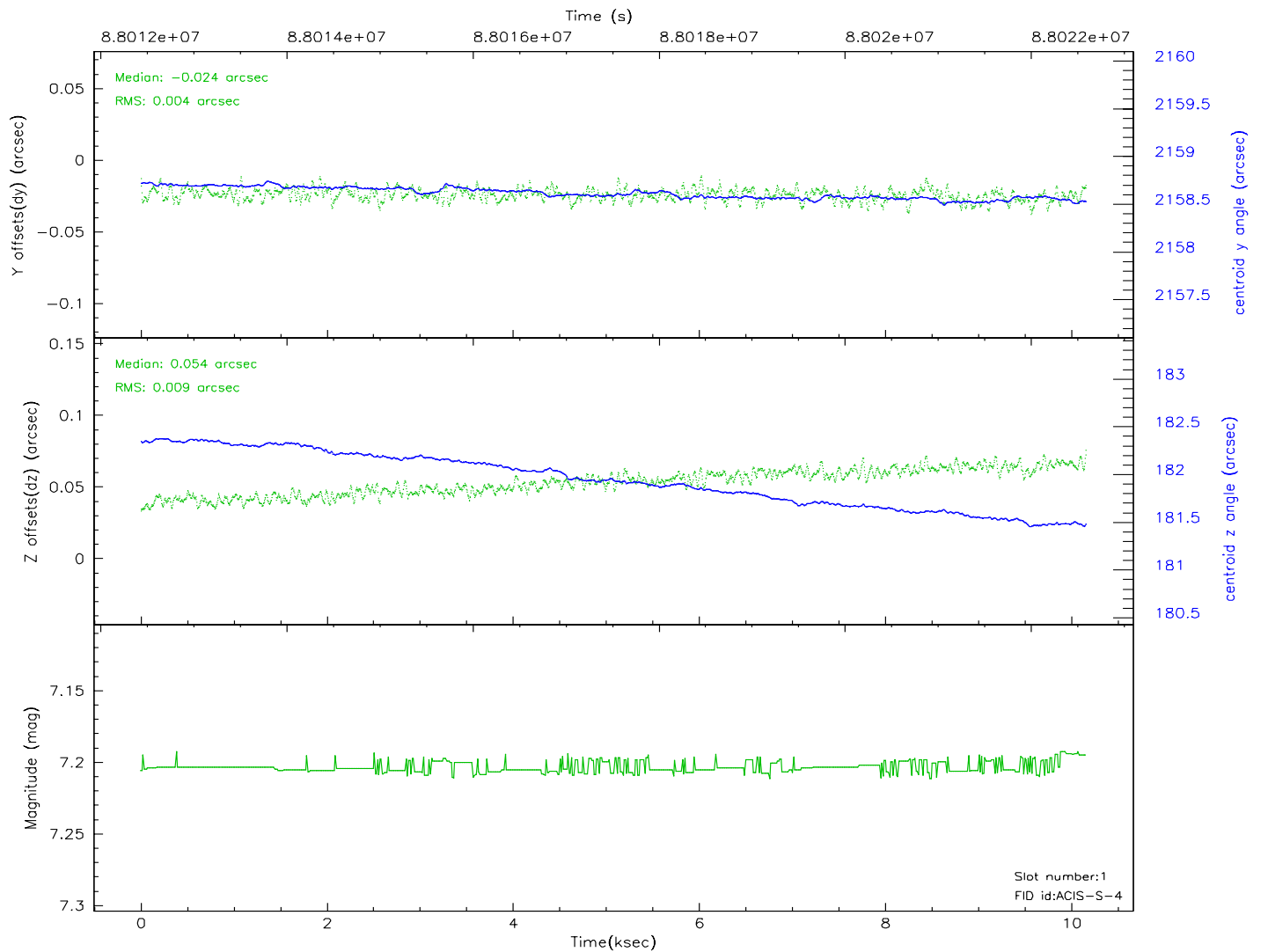
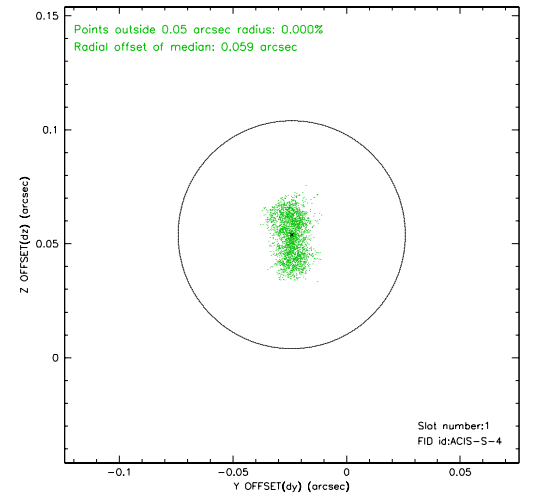
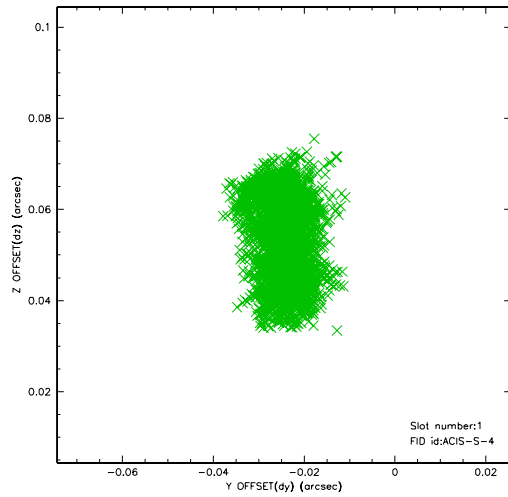


## 2.5 FID Slots

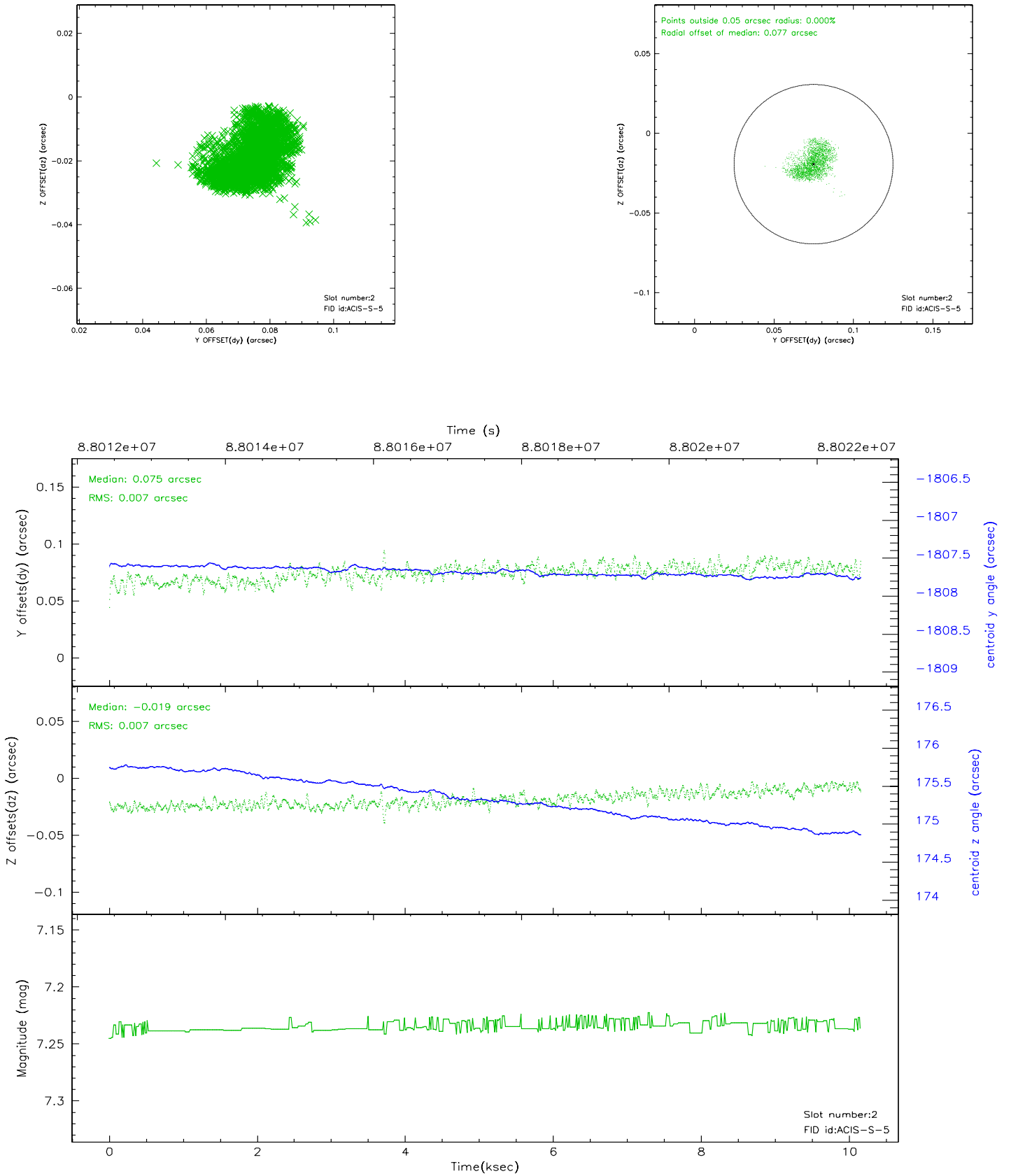
### 2.5.1 Slot 0



## 2.5.2 Slot 1

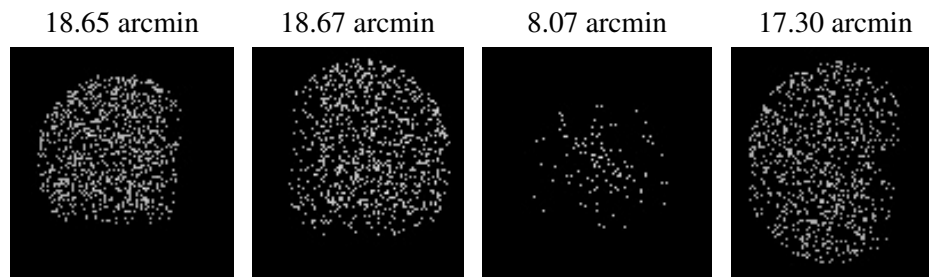


### 2.5.3 Slot 2





### 3 Point Sources



## A Summary

### A.1 Status

V&V Scientist	Jen Lauer
V&V Date (YYYY-MM-DD)	2007.06.12
V&V Edition	1
V&V Disposition and Status	OK
V&V Charge Time	10.102

### A.2 Comments