

V&V Reference Report

L2 ASCDS Version : 8.4.5

Observation 780 - L2 Version 4
Chandra X-Ray Center

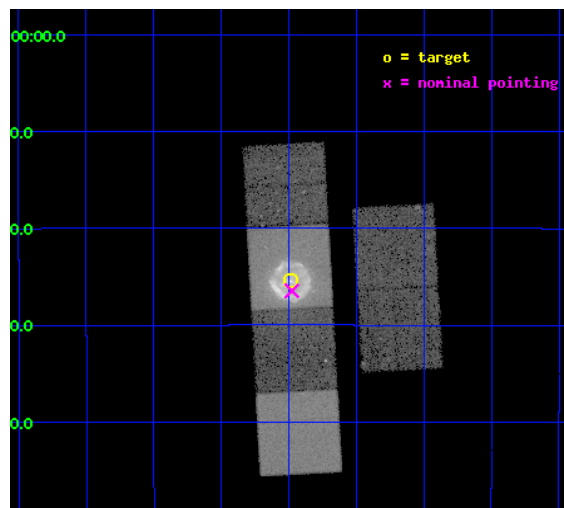
L2 Processing Date : Aug 31 2012

Contents

1	Front	2
2	OBI	3
2.1	OBI	3
2.1.1	Images	3
2.1.2	Bias	3
2.1.3	Parameters	4
2.1.4	Events	4
2.2	Compared Parameters	5
2.3	Aspect	6
2.4	Star Slots	9
2.4.1	Slot 3	9
2.4.2	Slot 4	10
2.4.3	Slot 5	11
2.4.4	Slot 6	12
2.4.5	Slot 7	13
2.5	FID Slots	14
2.5.1	Slot 0	14
2.5.2	Slot 1	15
2.5.3	Slot 2	16
A	Summary	17
A.1	Status	17
A.2	Comments	17

1 Front

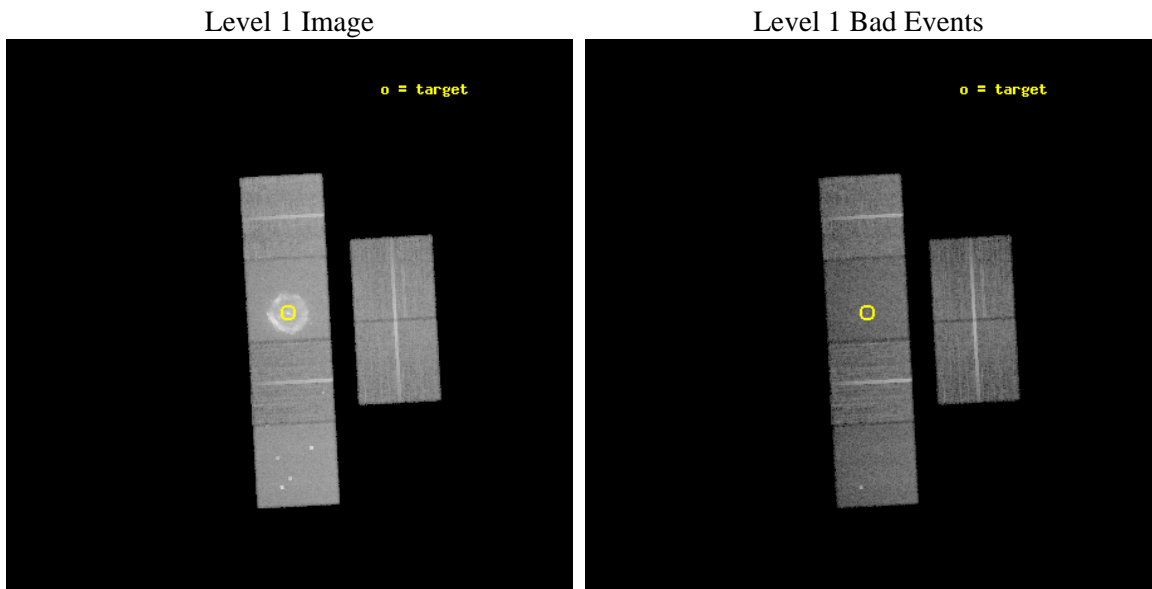
seq_num	500076	Sequence number
obs_id	780	Observation id
title	THE HISTORIC SUPERNOVA REMNANT SYSTEM - G11.2-0.3	Proposal title
observer	Dr. Victoria Kaspi	Principal investigator
object	G11.2-0.3	Source name
dtcycle	0	
cycle	P	events from which exps? Prim/Second/Both
ra_targ	272.8725	Observer's specified target RA [deg]
dec_targ	-19.423611	Observer's specified target Dec [deg]
ra_nom	272.86955381012	Nominal RA [deg]
dec_nom	-19.441075303129	Nominal Dec [deg]
roll_nom	266.87575295028	Nominal Roll [deg]
revision	4	Processing version of data
ontime	19996.800018609	Sum of GTIs [s]
livetime	19743.588496146	Livetime [s]
ontime2	19996.800018609	Sum of GTIs [s]
ontime3	19996.800018609	Sum of GTIs [s]
ontime5	19996.800018609	Sum of GTIs [s]
ontime6	19996.800018609	Sum of GTIs [s]
ontime7	19996.800018609	Sum of GTIs [s]
ontime8	19993.559058368	Sum of GTIs [s]
l2events	296421	Number of level 2 events



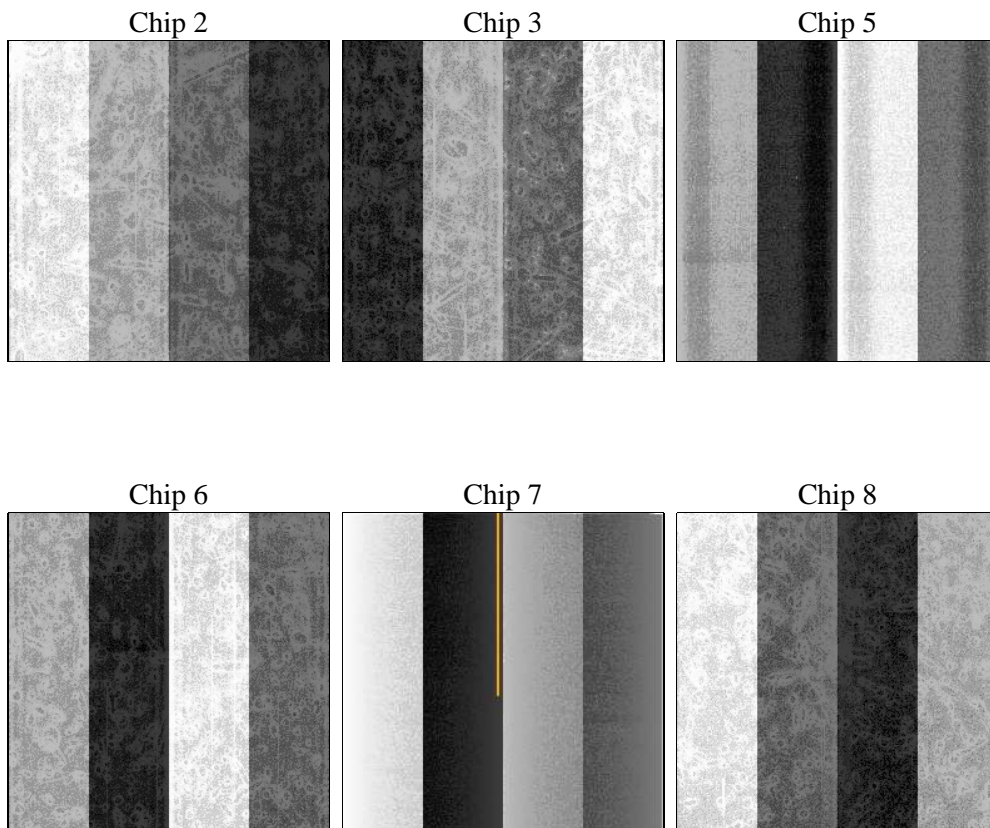
2 OBI

2.1 OBI

2.1.1 Images



2.1.2 Bias



2.1.3 Parameters

obi_num	0	Obi number	sched_exp_time	20000.000000	[s] Scheduled observation exposure time
ascdsver	8.4.5	Processing system revision	ontime	19996.800018609	Sum of GTIs [s]
caldsver	4.5.1.1	 	ontime2	19996.800018609	Sum of GTIs [s]
date	2012-08-31T13:38:16	Date and time of file creation	ontime3	19996.800018609	Sum of GTIs [s]
revision	4	Processing version of data	ontime5	19996.800018609	Sum of GTIs [s]
			ontime6	19996.800018609	Sum of GTIs [s]
			ontime7	19996.800018609	Sum of GTIs [s]
			ontime8	19993.559058368	Sum of GTIs [s]
			l1events	909919	Number of level 1 events

2.1.4 Events

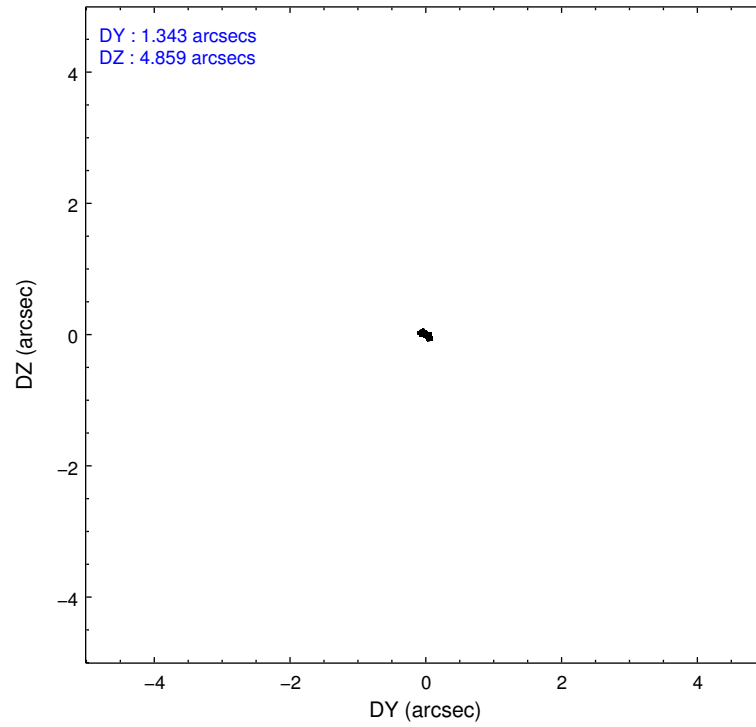
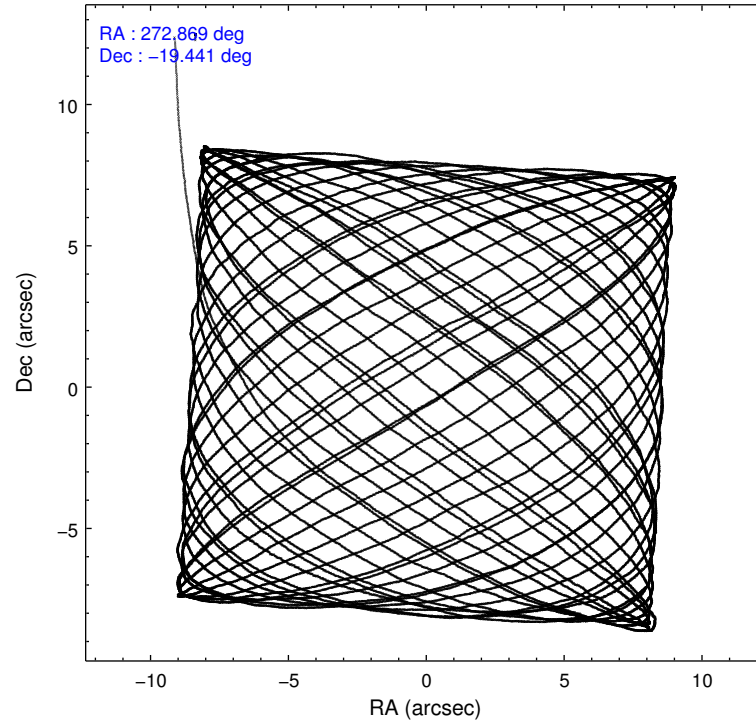
	ccd 2	ccd 3	ccd 5	ccd 6	ccd 7	ccd 8		ccd 2	ccd 3	ccd 5	ccd 6	ccd 7	ccd 8
level 1 events	115547	115727	157153	119217	255602	146673	grade 0 events	6820	7826	10471	9026	35156	12274
rejected events	101153	100406	81955	101891	80806	114624		5%	6%	6%	7%	13%	8%
rejected %	87%	86%	52%	85%	31%	78%	grade 1 events	60	59	155	57	155	100
								0%	0%	0%	0%	0%	0%
							grade 2 events	2824	2723	21367	2986	42426	6383
								2%	2%	13%	2%	16%	4%
							grade 3 events	1257	1228	3550	1422	19448	3225
								1%	1%	2%	1%	7%	2%
							grade 4 events	1288	1265	3189	1383	19308	2996
								1%	1%	2%	1%	7%	2%
							grade 5 events	3700	4121	12098	4612	14023	5709
								3%	3%	7%	3%	5%	3%
							grade 6 events	2209	2284	36668	2516	58533	7187
								1%	1%	23%	2%	22%	4%
							grade 7 events	97389	96221	69655	97215	66553	108799
								84%	83%	44%	81%	26%	74%

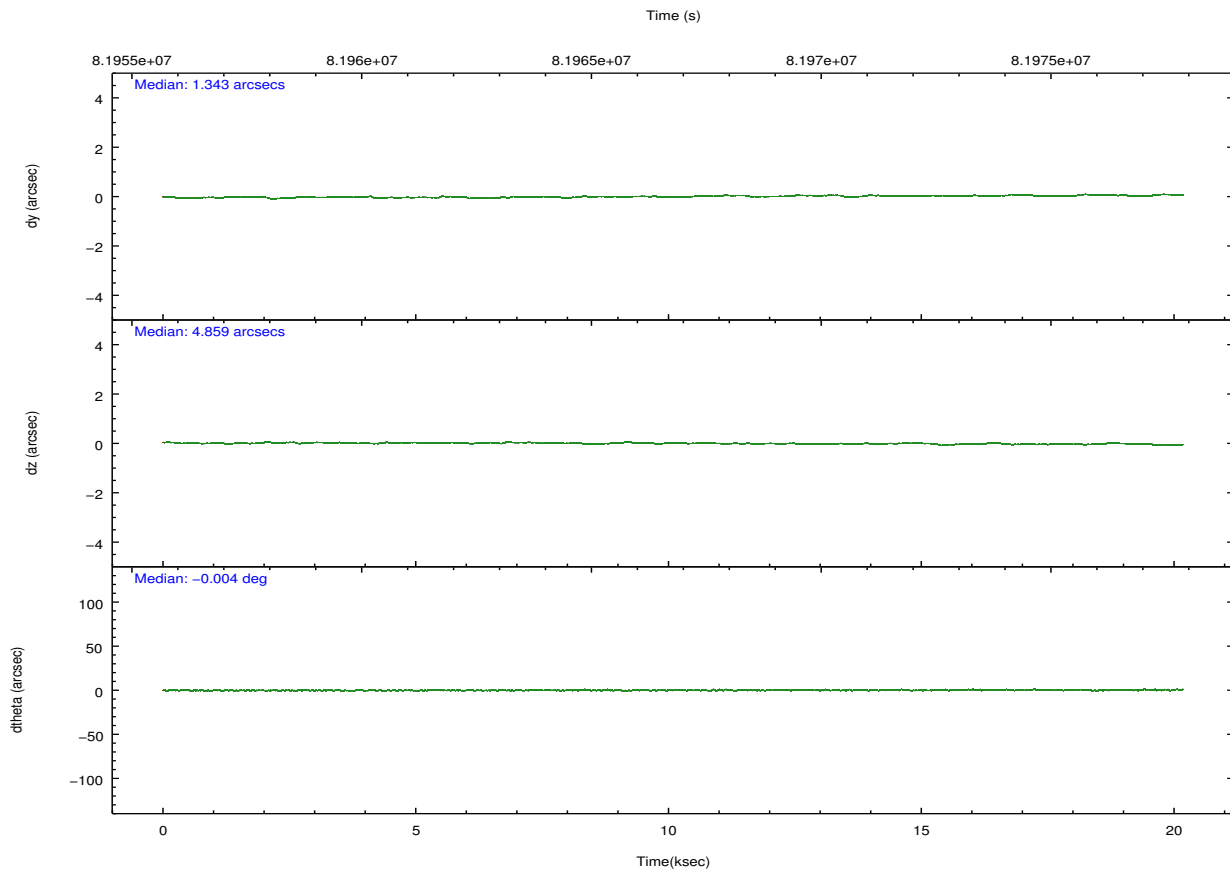
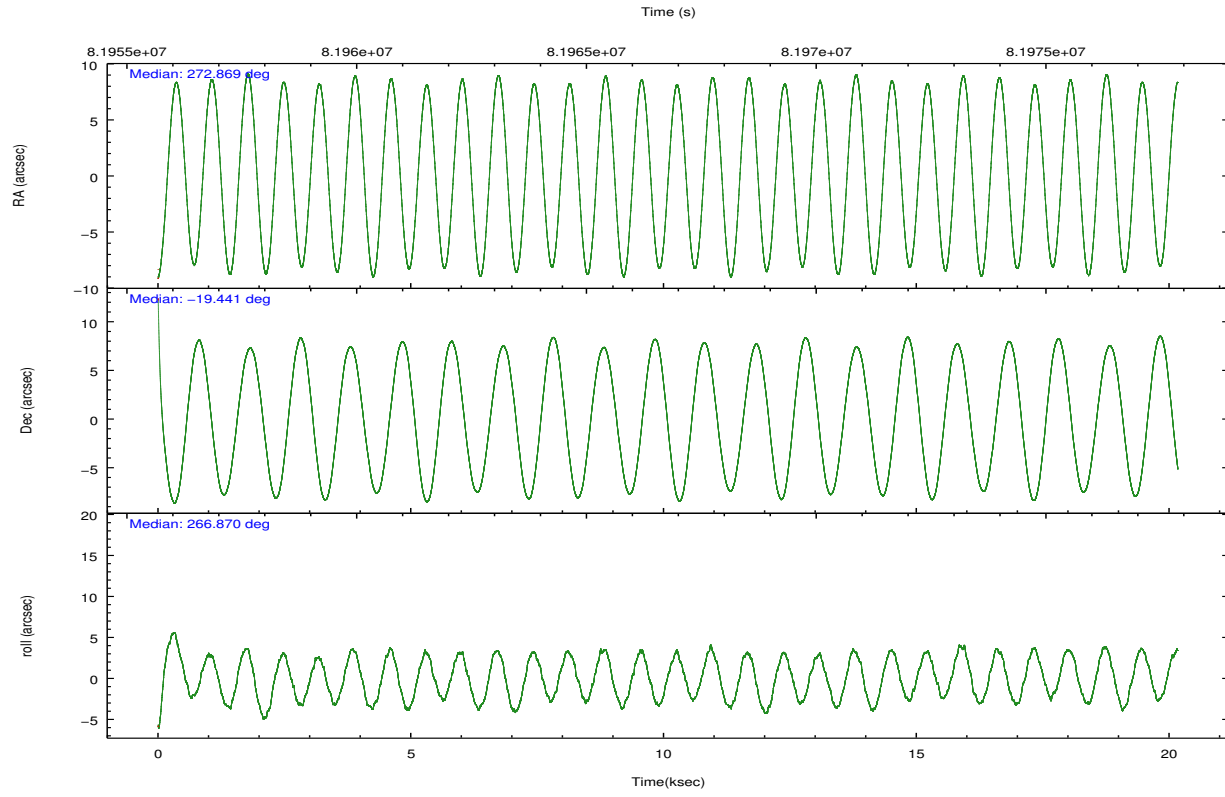
2.2 Compared Parameters

Parameter	Planned	Actual
Instrument	ACIS	ACIS
Detector	ACIS-235678	ACIS-235678
Grating	NONE	NONE
Data mode	FAINT	FAINT
Observation mode	POINTING	POINTING
[deg] Pointing RA	272.856277	272.8695538101232
[deg] Pointing Dec	-19.416728	-19.44107530312889
[deg] Pointing Roll	266.714708	266.8757529502844
[mm] SIM focus pos	-0.684267	-0.6828225247311905
[mm] SIM defocus	0	0.001444936568705701
[mm] SIM translation stage pos	-190.132523	-190.1400660498719
[mm] SIM translation stage offset	0	0.00754346686406393
[s] Observation start time (MET)	81956863.184000	81955789.419282
Observation start date	2000-08-06T13:46:39	2000-08-06T13:29:49
[s] Observation end time (MET)	81976863.184000	81977172.970079
Observation end date	2000-08-06T19:19:59	2000-08-06T19:26:12
Read mode	TIMED	TIMED

Parameter	Planned	Actual
Obspar format version number	7	7
Obspar file type	PREDICTED	ACTUAL
Obspar update status	NONE	UPDATED
Number of optional ACIS chips dropped	0	0
On-chip summing requested	N	N
Subarray requested	NONE	NONE
Alternating exposures requested	N	N
[s] Primary exposure time	0.000000	3.2

2.3 Aspect



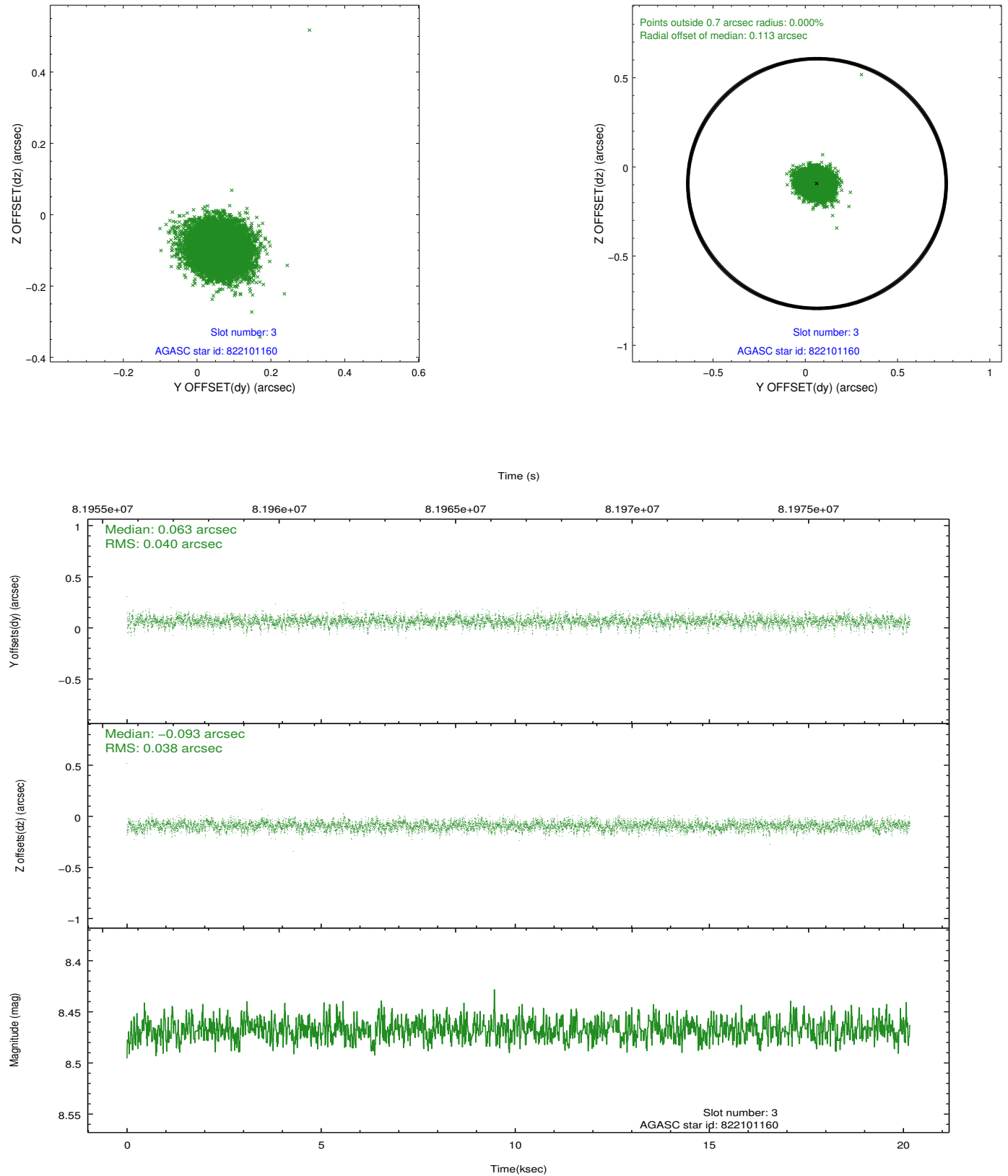


Slot Statistics

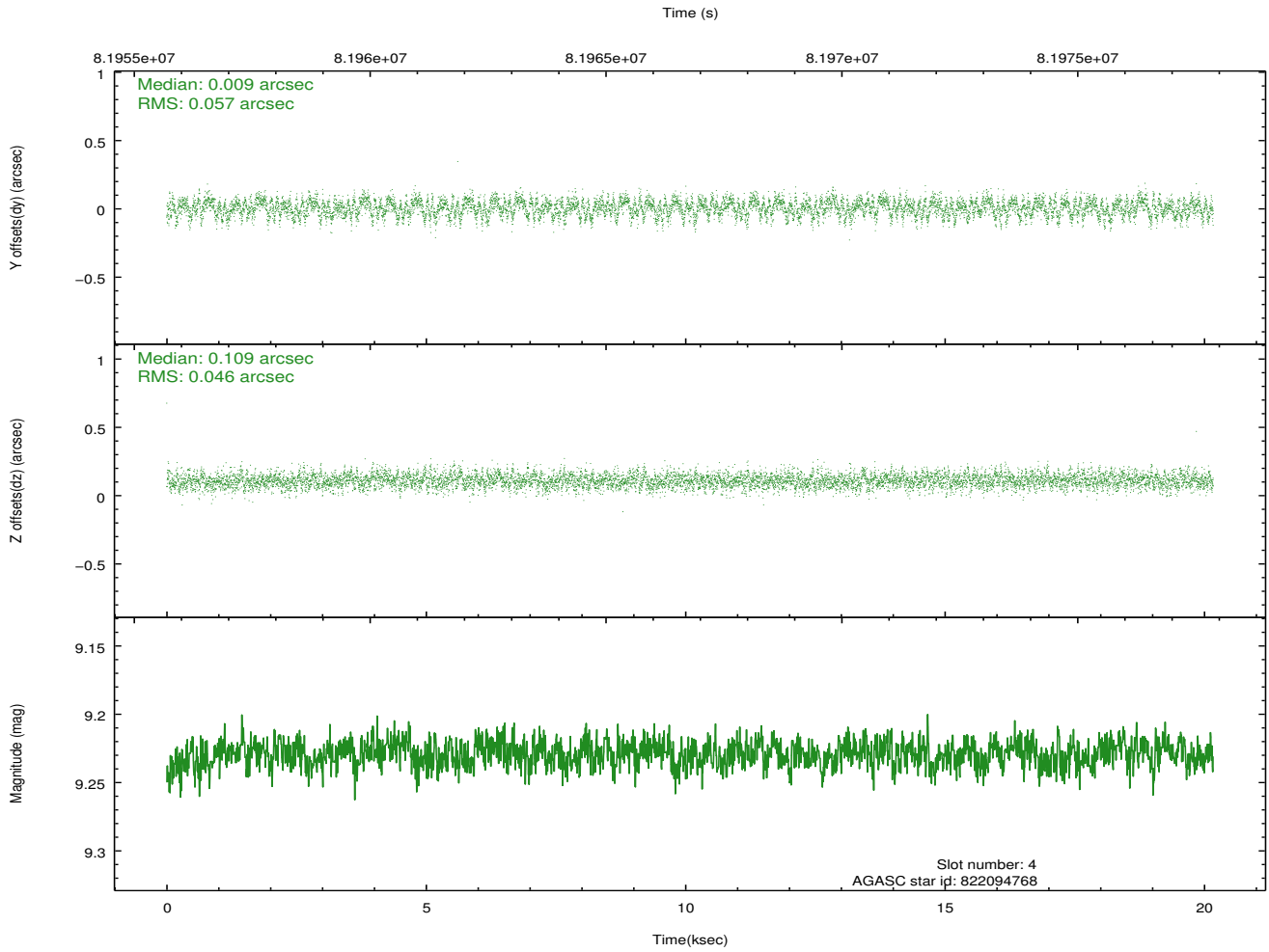
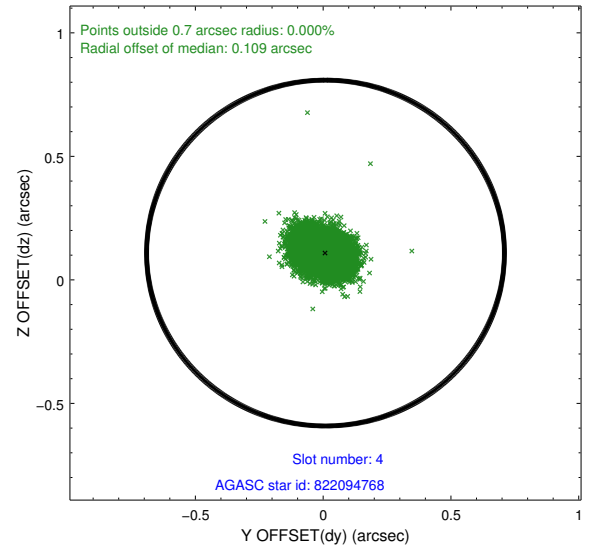
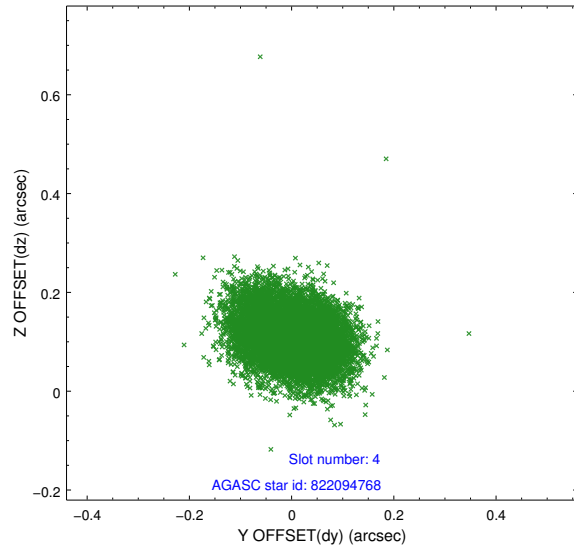
slot	status	id	mag	n_pts	med_dy	med_dz	dr1	dr2	ra	dec	mean_y	mean_z
0	FID	ACIS-S-3	7.36	4920	-0.035	-0.004	0.007	0.011	0.000000	0.000000	59.23	-1855.03
1	FID	ACIS-S-4	7.21	4918	-0.003	0.022	0.006	0.010	0.000000	0.000000	2159.41	182.33
2	FID	ACIS-S-5	7.24	4919	0.011	-0.008	0.006	0.010	0.000000	0.000000	-1806.54	176.20
3	GUIDE	822101160	8.47	9837	0.063	-0.093	0.059	0.094	272.245889	-20.018987	2287.85	-1936.28
4	GUIDE	822094768	9.23	9838	0.009	0.109	0.077	0.126	273.292799	-19.669391	826.21	1530.06
5	GUIDE	822086880	8.96	9834	-0.125	0.153	0.087	0.147	273.464058	-18.989477	-1649.87	1978.26
6	GUIDE	822093080	9.14	9836	-0.043	-0.111	0.072	0.116	272.547995	-18.931864	-1680.71	-1147.69
7	GUIDE	822100616	9.40	9832	0.091	-0.060	0.081	0.134	272.960097	-19.721770	1077.05	414.60

2.4 Star Slots

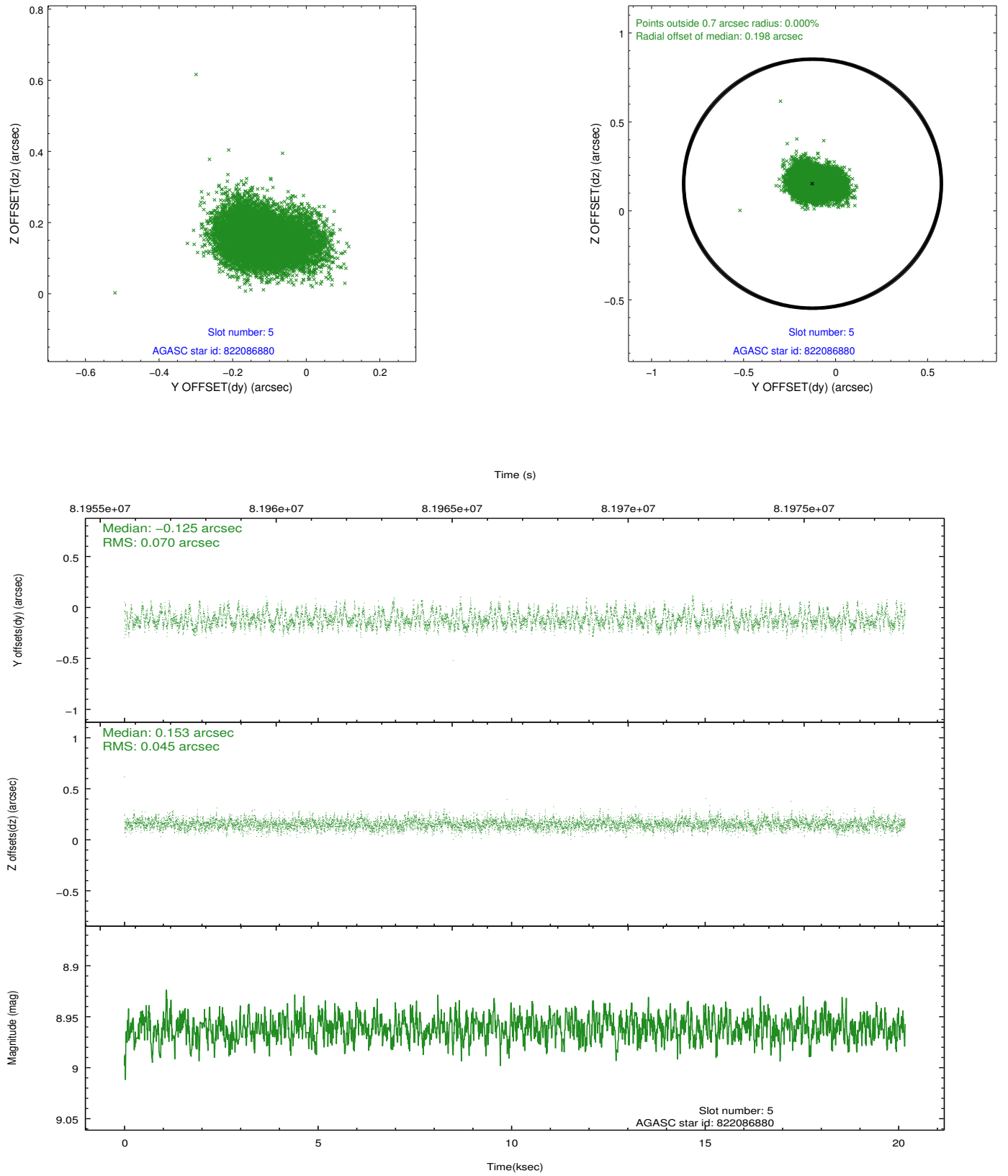
2.4.1 Slot 3



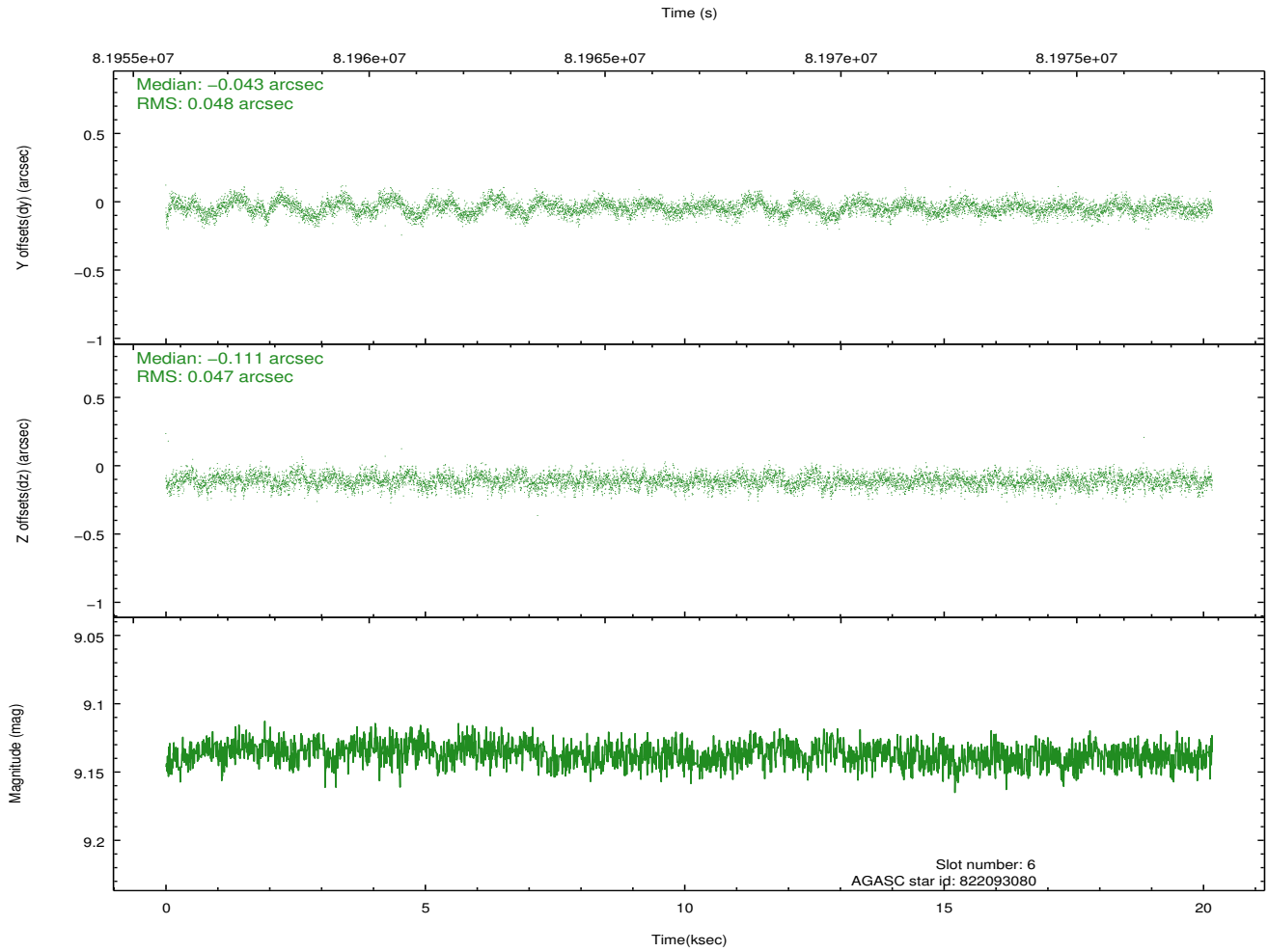
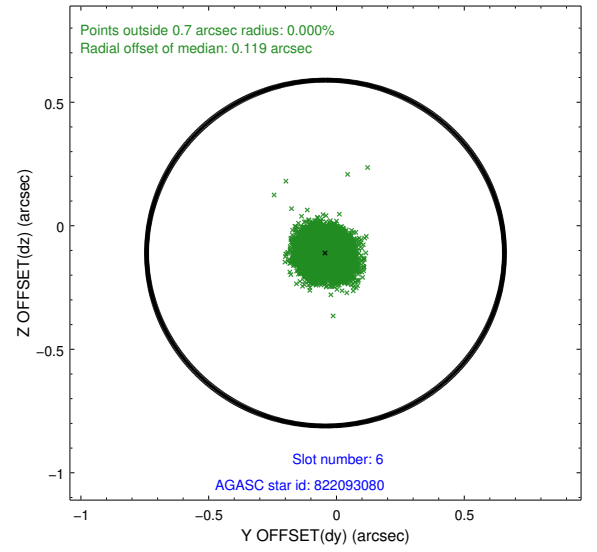
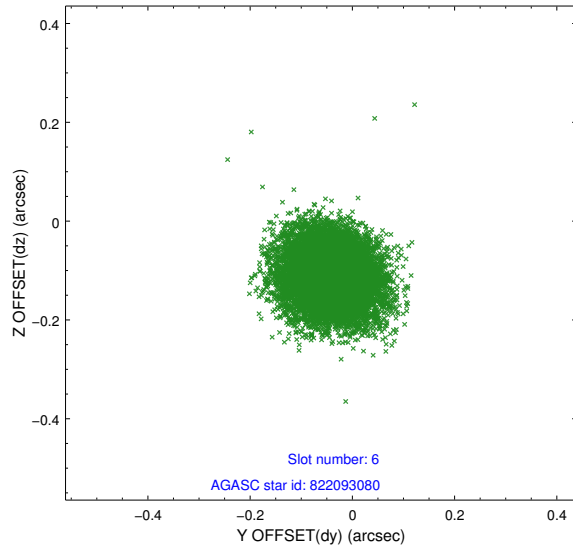
2.4.2 Slot 4



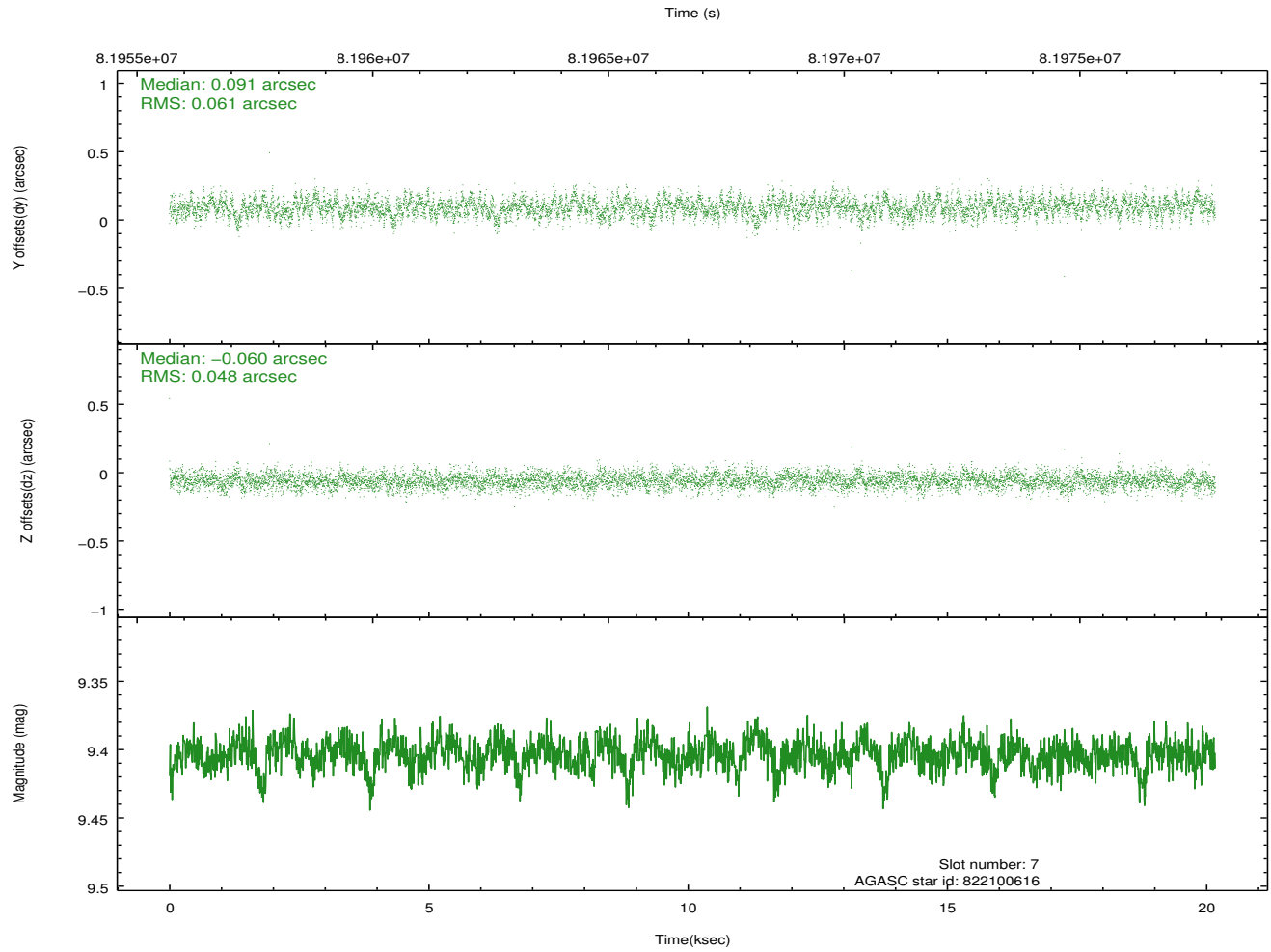
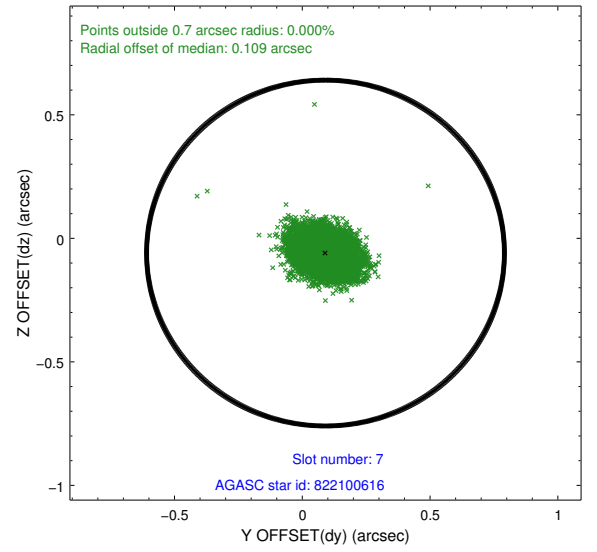
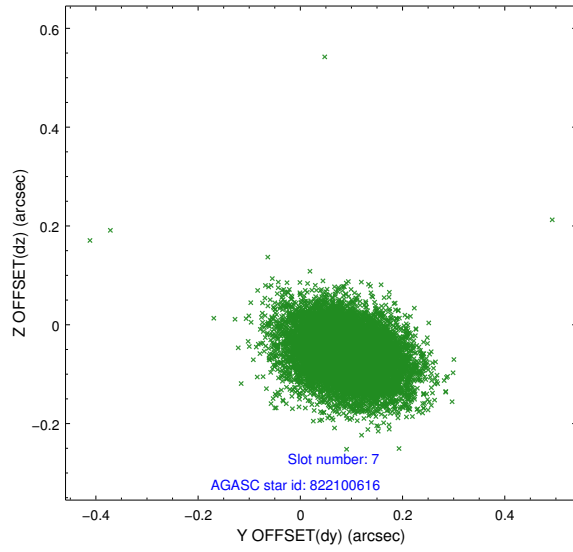
2.4.3 Slot 5



2.4.4 Slot 6

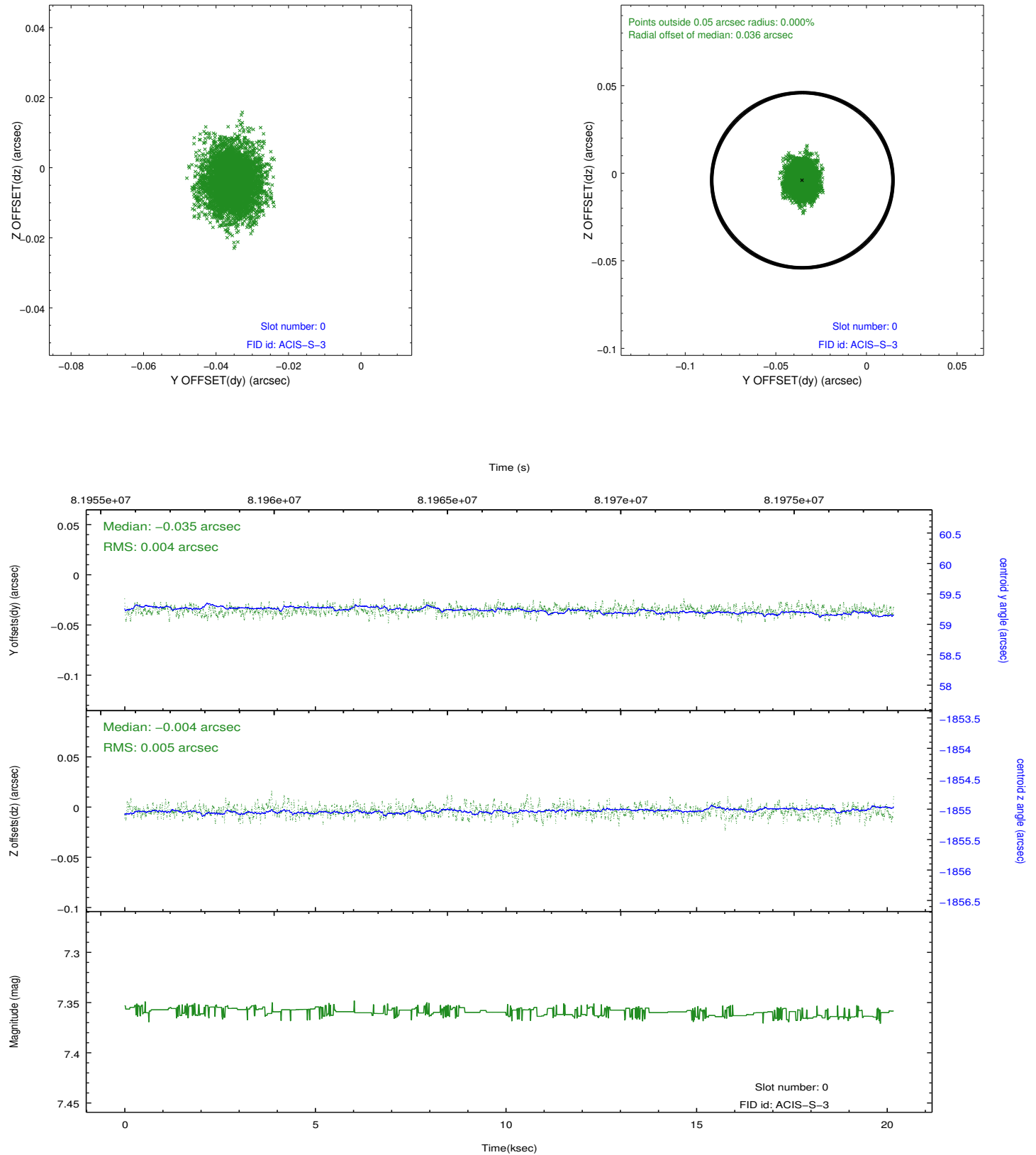


2.4.5 Slot 7

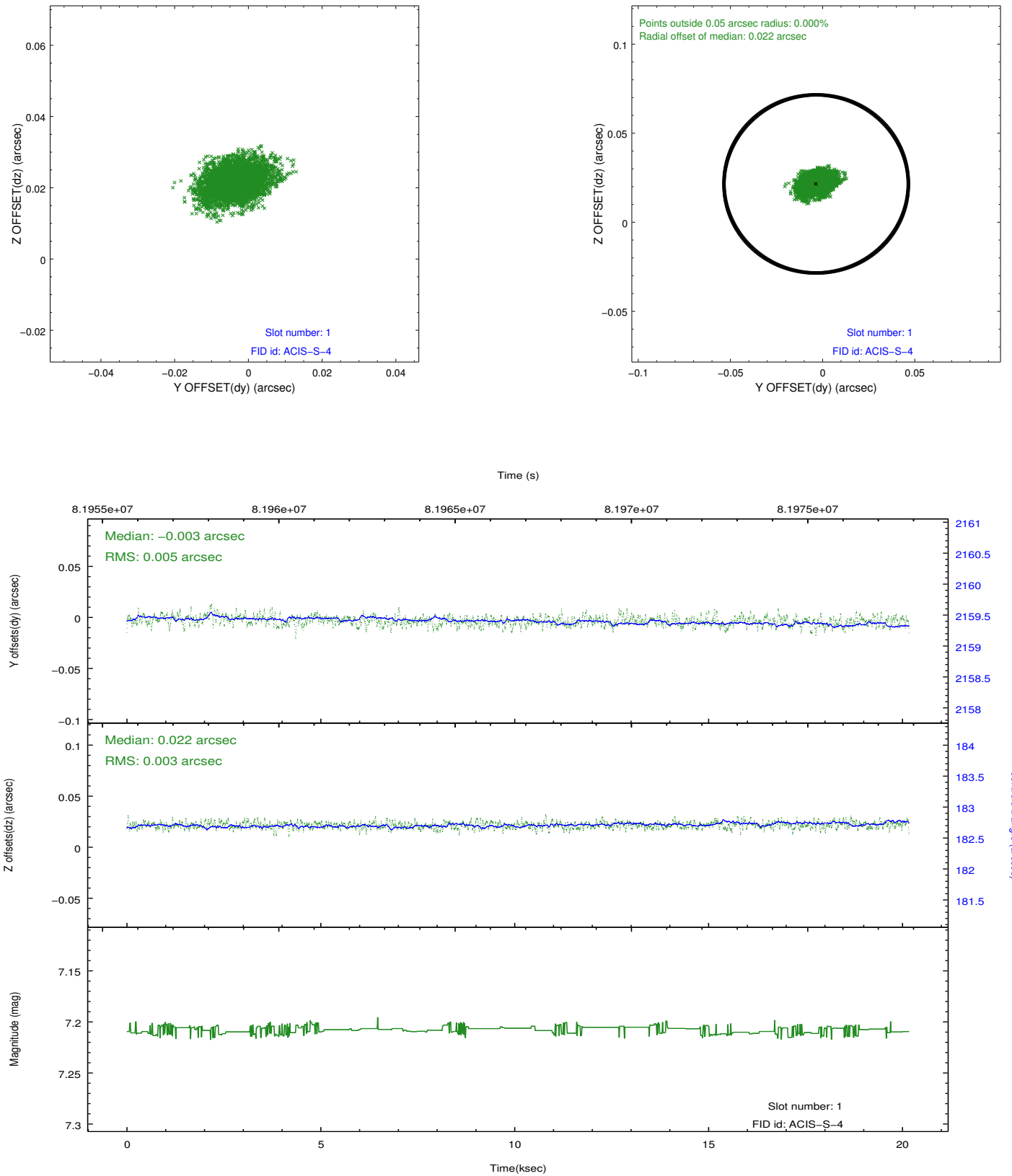


2.5 FID Slots

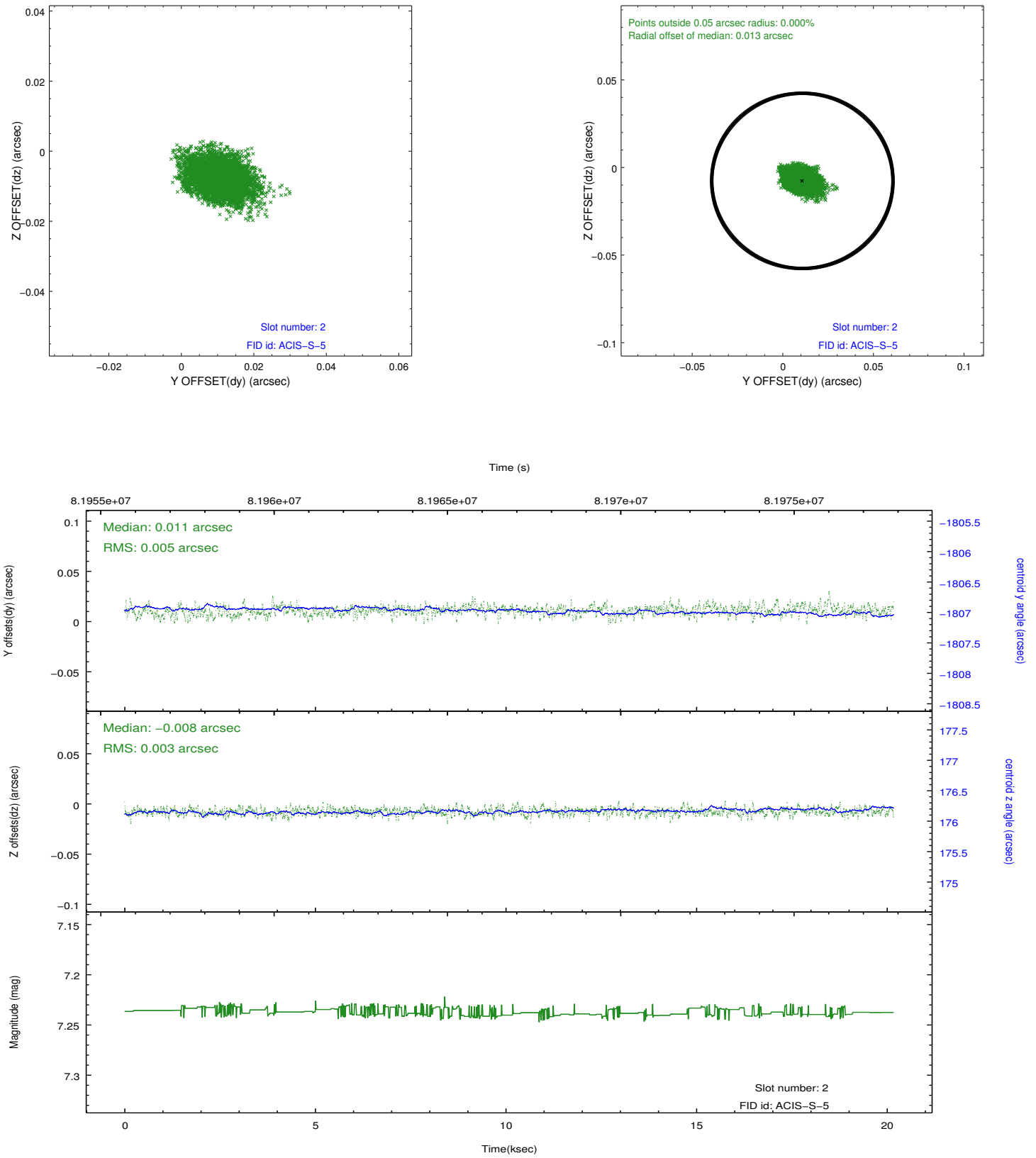
2.5.1 Slot 0



2.5.2 Slot 1



2.5.3 Slot 2



A Summary

A.1 Status

V&V Scientist	Jen Lauer
V&V Date (YYYY-MM-DD)	2012.09.06
V&V Edition	1
V&V Disposition and Status	OK
V&V Charge Time	20

A.2 Comments