

V&V Reference Report

L2 ASCDS Version : 7.6.10

Observation 755 - L2 Version 001
Chandra X-Ray Center

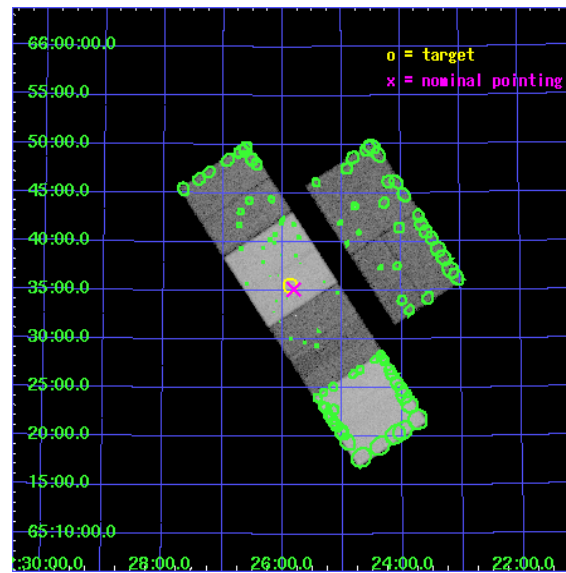
L2 Processing Date : Jun 12 2007

Contents

1	Front	2
2	OBI	3
2.1	OBI	3
2.1.1	Images	3
2.1.2	Bias	3
2.1.3	Parameters	4
2.1.4	Events	4
2.2	Compared Parameters	5
2.3	Aspect	6
2.4	Star Slots	9
2.4.1	Slot 3	9
2.4.2	Slot 4	10
2.4.3	Slot 5	11
2.4.4	Slot 6	12
2.4.5	Slot 7	13
2.5	FID Slots	14
2.5.1	Slot 0	14
2.5.2	Slot 1	15
2.5.3	Slot 2	16
3	Point Sources	17
A	Summary	18
A.1	Status	18
A.2	Comments	18

1 Front

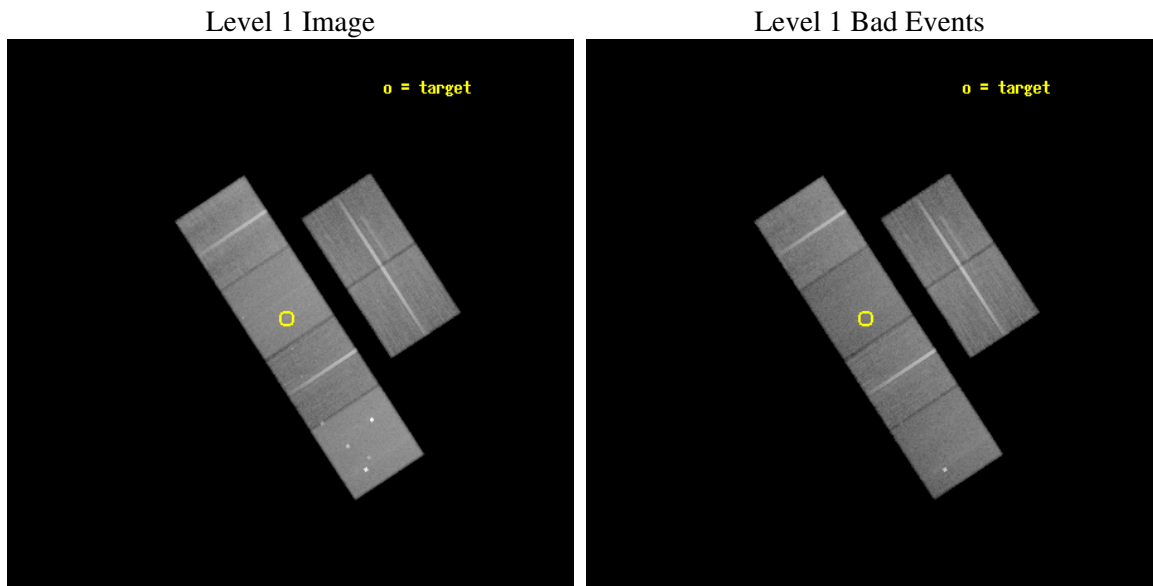
seq_num	500051
obs_id	755
title	BOW SHOCK NEBULAE FROM HIGH VELOCITY NEUTRON STARS
observer	James Cordes
object	B2224+65
dtcycle	0
cycle	P
ra_targ	336.468333
dec_targ	65.592722
ra_nom	336.45182916672
dec_nom	65.585579451731
roll_nom	236.75439479094
revision	2
ontime	49750.318105951
livetime	49120.349622048
ontime2	49753.559086099
ontime3	49753.559205711
ontime5	49750.318125859
ontime6	49750.318175703
ontime7	49750.318105951
ontime8	49753.55334869
l2events	468890



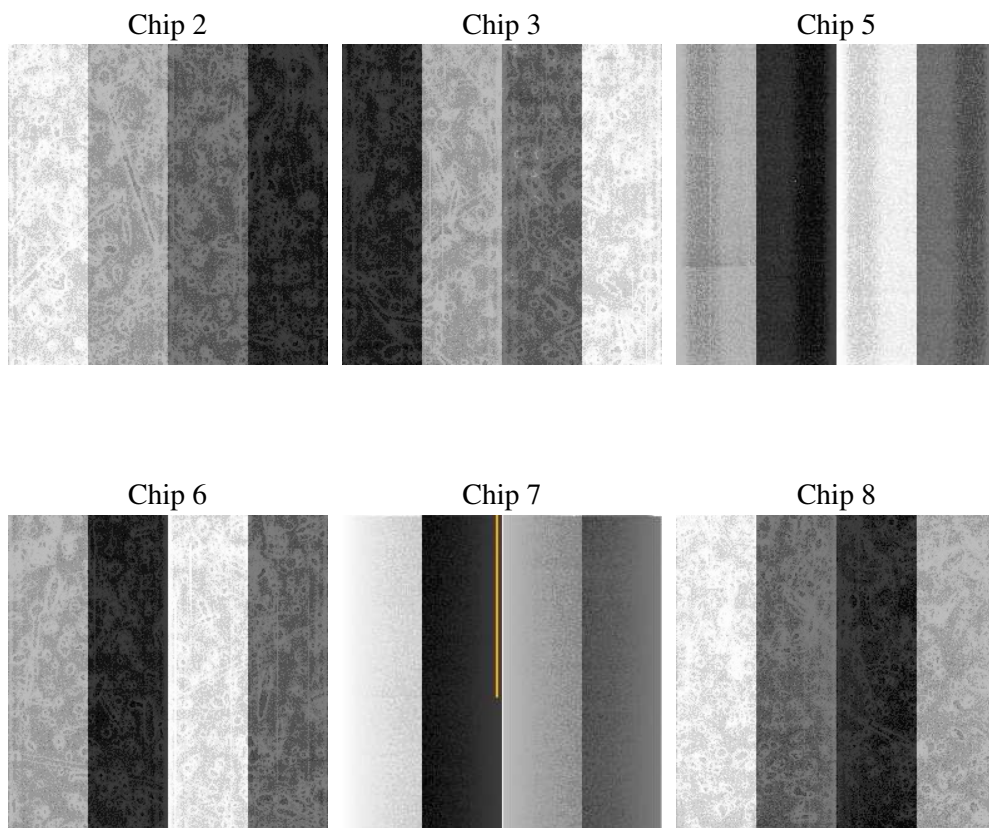
2 OBI

2.1 OBI

2.1.1 Images



2.1.2 Bias



2.1.3 Parameters

obi_num	0
ascdsver	7.6.10
caldsver	3.4.0
date	2007-06-12T15:37:32
revision	2

sched_exp_time	50000.000000
ontime	49750.318105951
ontime2	49753.559086099
ontime3	49753.559205711
ontime5	49750.318125859
ontime6	49750.318175703
ontime7	49750.318105951
ontime8	49753.55334869
l1events	2207065

2.1.4 Events

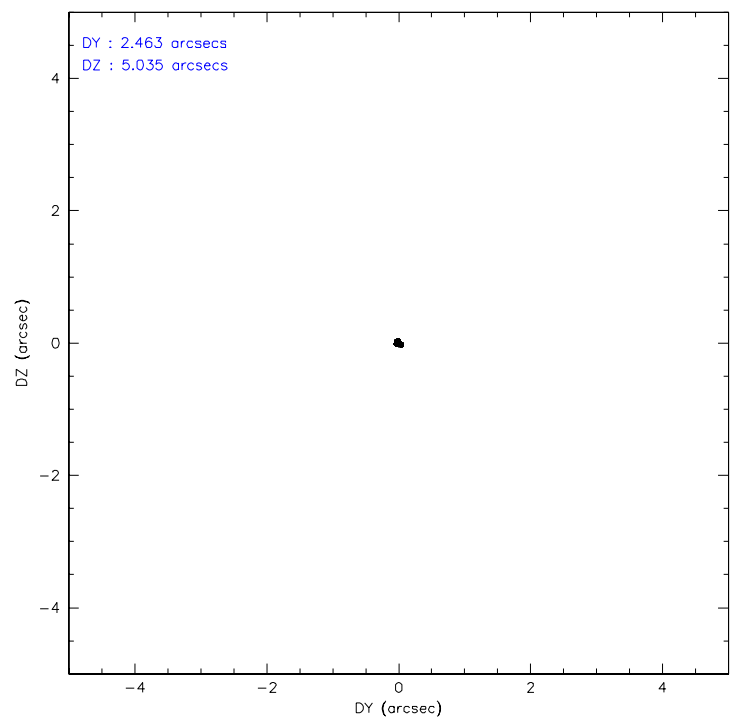
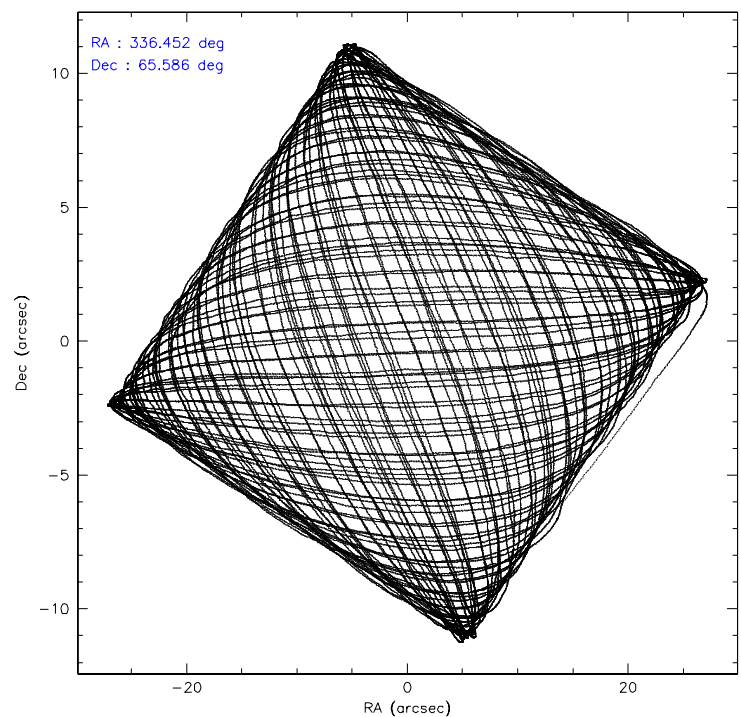
	ccd 2	ccd 3	ccd 5	ccd 6	ccd 7	ccd 8
level 1 events	333120	309585	447753	318396	395214	402997
rejected events	298116	274967	239177	282632	231039	325080
rejected %	89%	88%	53%	88%	58%	80%

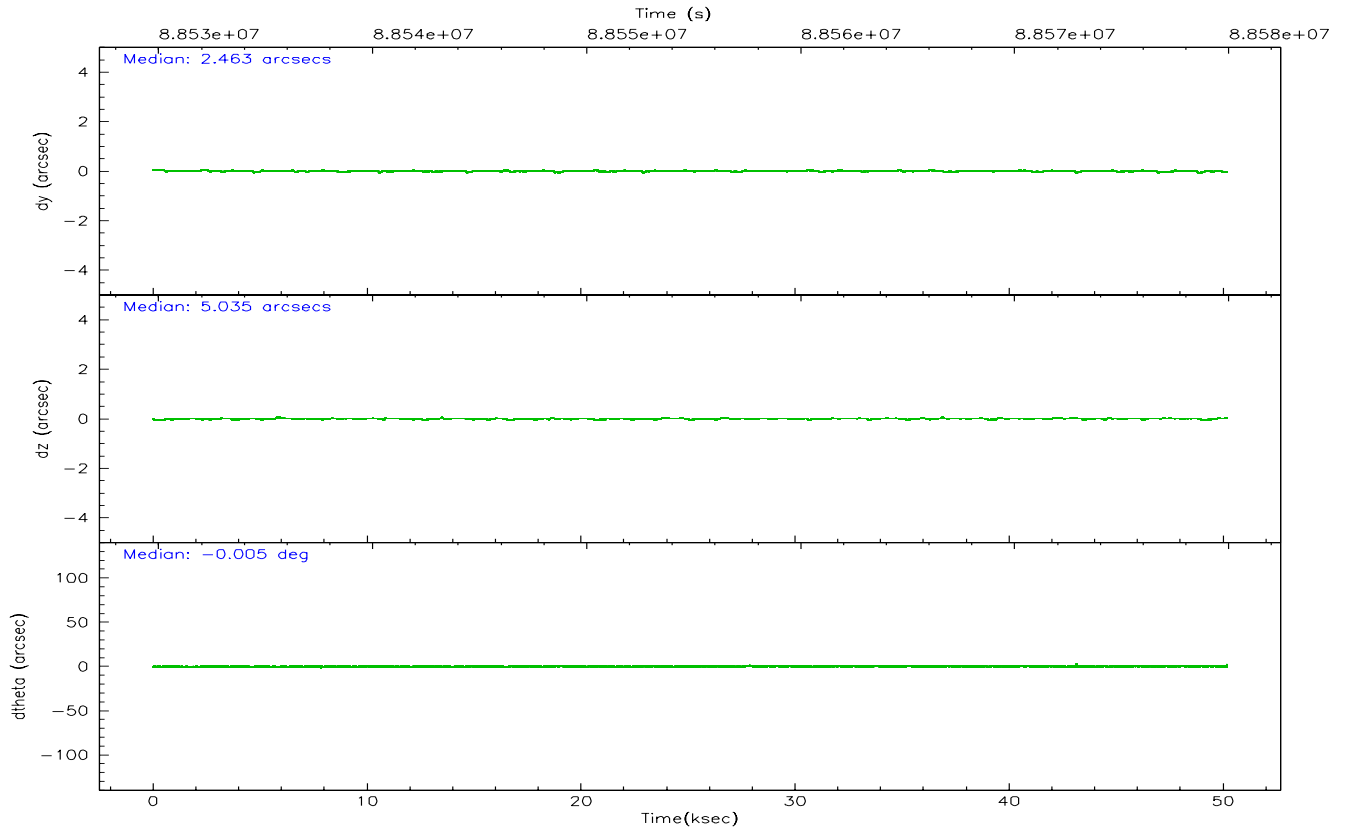
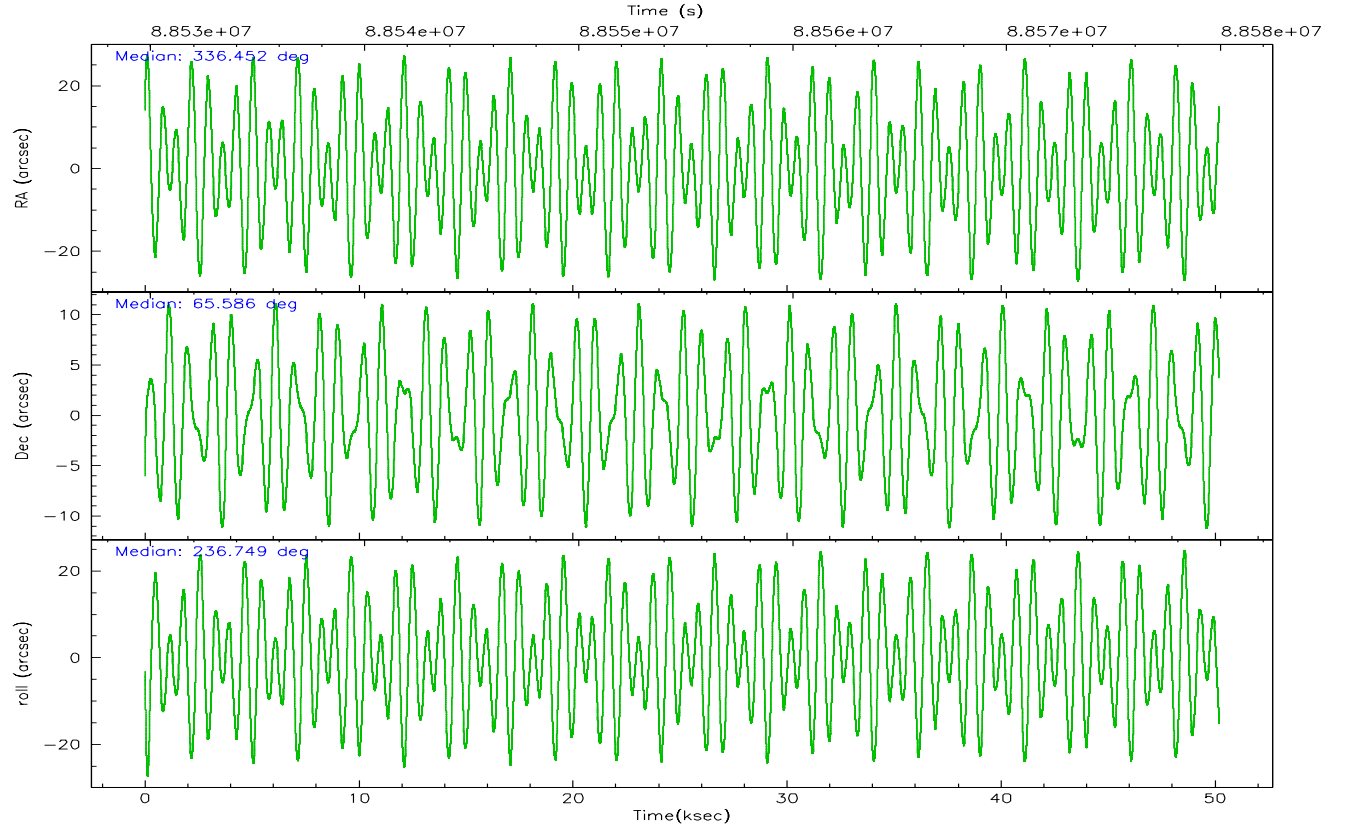
	ccd 2	ccd 3	ccd 5	ccd 6	ccd 7	ccd 8
grade 0 events	14839	14784	31109	14507	15403	24165
	4%	4%	6%	4%	3%	5%
grade 1 events	139	133	551	129	376	216
	0%	0%	0%	0%	0%	0%
grade 2 events	7386	6808	58272	7184	32216	16836
	2%	2%	13%	2%	8%	4%
grade 3 events	3345	3480	8959	3639	14795	8473
	1%	1%	2%	1%	3%	2%
grade 4 events	3276	3443	7963	3520	14982	8001
	0%	1%	1%	1%	3%	1%
grade 5 events	10583	11563	34219	13026	37698	16172
	3%	3%	7%	4%	9%	4%
grade 6 events	6160	6104	102290	6915	86788	20447
	1%	1%	22%	2%	21%	5%
grade 7 events	287392	263270	204390	269476	192956	308687
	86%	85%	45%	84%	48%	76%

2.2 Compared Parameters

Parameter	Planned	Actual	Parameter	Planned	Actual
Instrument	ACIS	ACIS	Obspar format version number	6	6
Detector	ACIS-235678	ACIS-235678	Obspar file type	PREDICTED	ACTUAL
Grating	NONE	NONE	Obspar update status	NONE	UPDATED
Data mode	FAINT	FAINT	Number of optional ACIS chips dropped	0	0
Observation mode	POINTING	POINTING	On-chip summing requested	N	N
Pointing RA	336.455108	336.4518291667198	Subarray requested	NONE	NONE
Pointing Dec	65.612906	65.58557945173077	Alternating exposures requested	N	N
Pointing Roll	236.594781	236.7543947909424	Primary exposure time	3.200000	3.2
SIM focus pos (mm)	-0.684267	-0.6828225247311905			
SIM defocus (mm)	0	0.001444936568705701			
SIM translation stage pos (mm)	-190.132523	-190.1425803651734			
SIM translation stage offset (mm)	0	0.01005778216563158			
Observation start time	88529931.184000	88529143.878932			
Observation start date	2000-10-21T15:37:47	2000-10-21T15:25:43			
Observation end time	88579931.184000	88580793.630885			
Observation end date	2000-10-22T05:31:07	2000-10-22T05:46:33			
Read mode	TIMED	TIMED			

2.3 Aspect



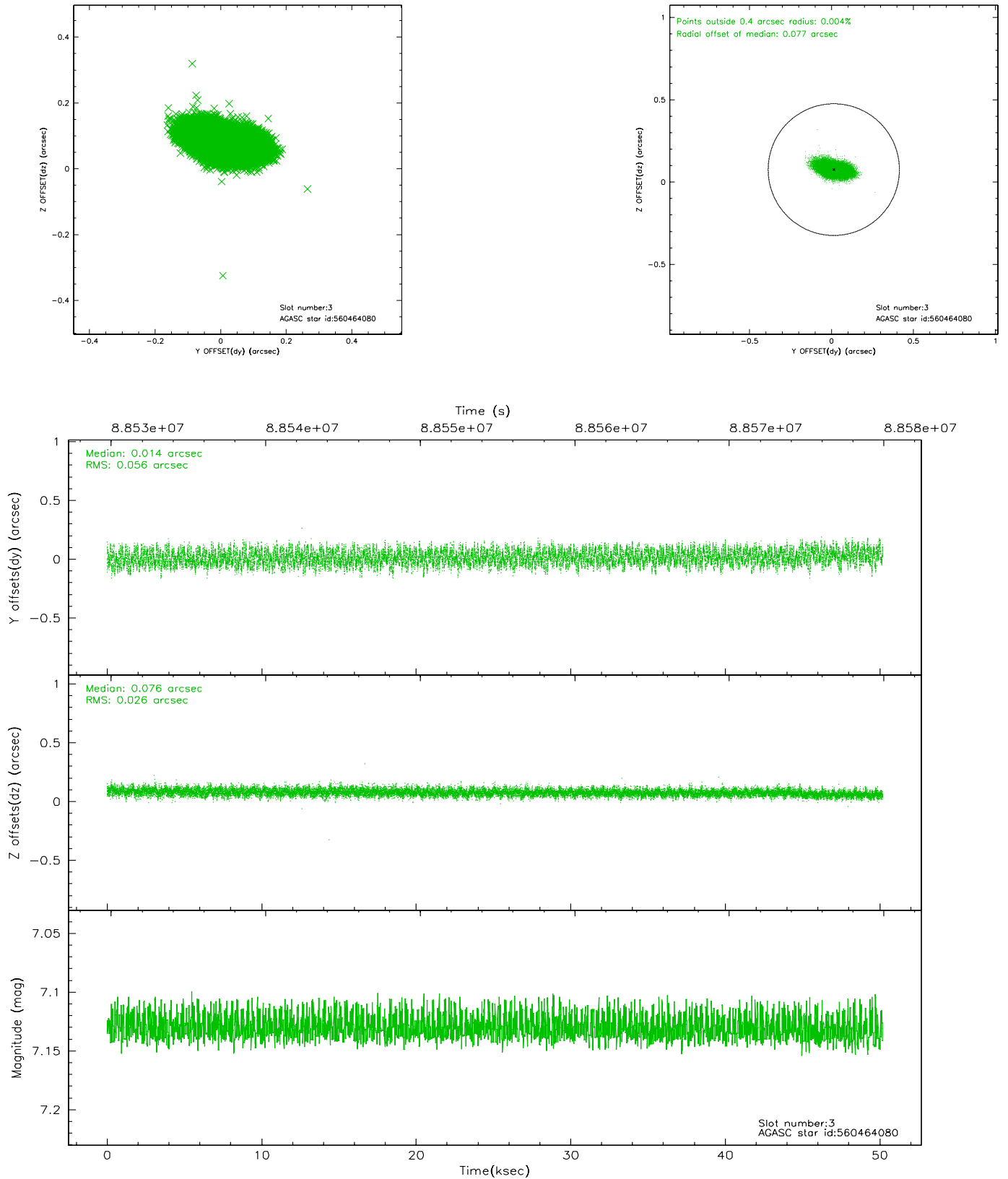


Slot Statistics

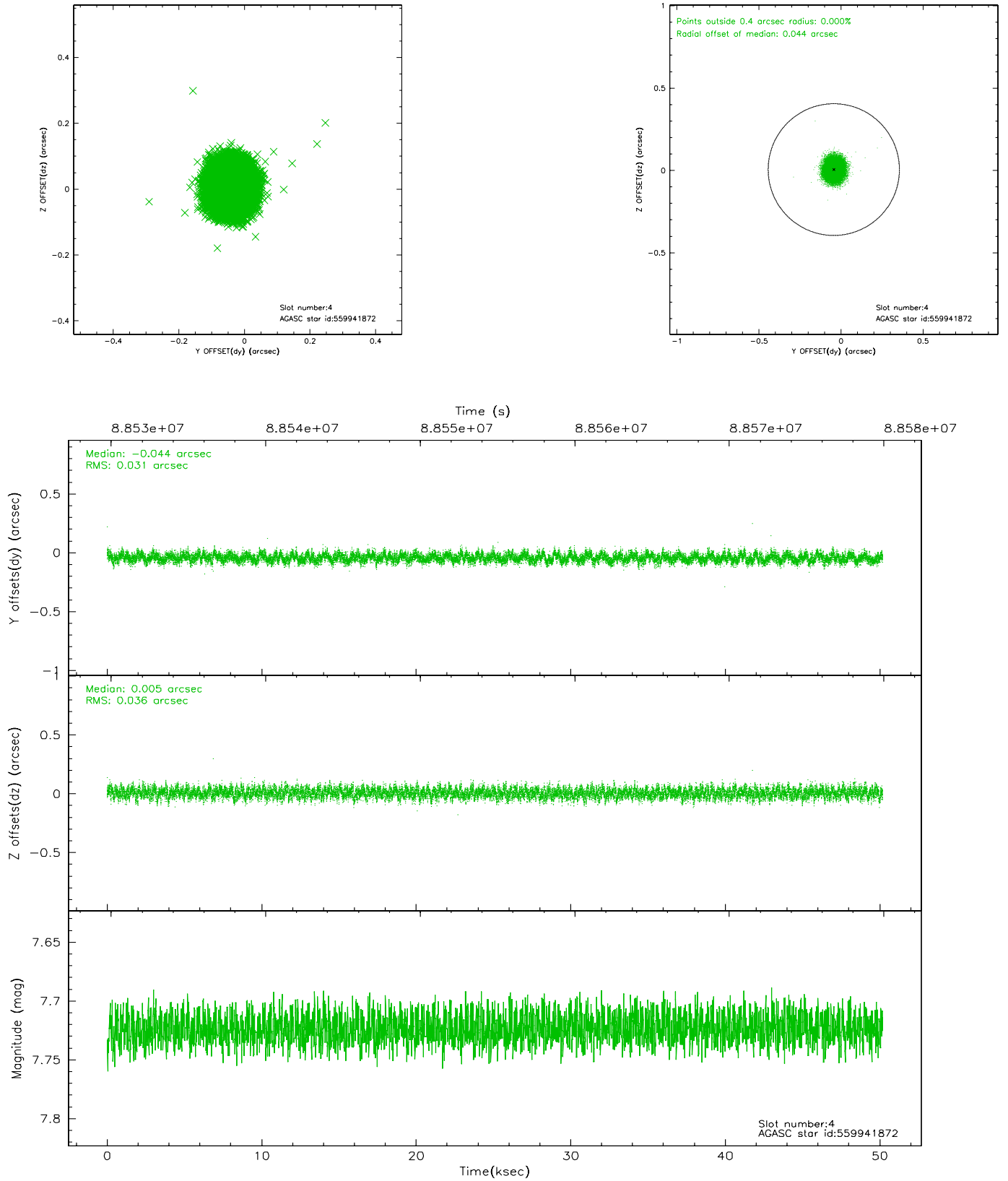
slot	status	id	mag	n_pts	med_dy	med_dz	dr1	dr2	ra	dec	mean_y	mean_z
0	FID	ACIS-S-2	7.11	12243	-0.020	0.026	0.009	0.017	0.000000	0.000000	-755.08	-1726.08
1	FID	ACIS-S-4	7.21	12240	-0.063	0.003	0.009	0.023	0.000000	0.000000	2158.14	182.44
2	FID	ACIS-S-5	7.24	12240	0.051	-0.020	0.008	0.016	0.000000	0.000000	-1807.91	176.01
3	GUIDE	560464080	7.13	24483	0.014	0.076	0.066	0.110	338.477679	65.831661	-2338.18	2028.87
4	GUIDE	559941872	7.72	24485	-0.044	0.005	0.051	0.081	336.770906	65.466155	180.49	685.12
5	GUIDE	559942656	8.33	24484	-0.036	0.114	0.072	0.113	335.233249	65.304591	1924.07	-931.77
6	GUIDE	559942208	8.41	24478	0.068	-0.087	0.057	0.093	336.508890	65.529699	206.54	232.46
7	GUIDE	560470128	8.98	24478	-0.005	-0.106	0.064	0.103	335.961670	65.853657	-325.18	-1084.75

2.4 Star Slots

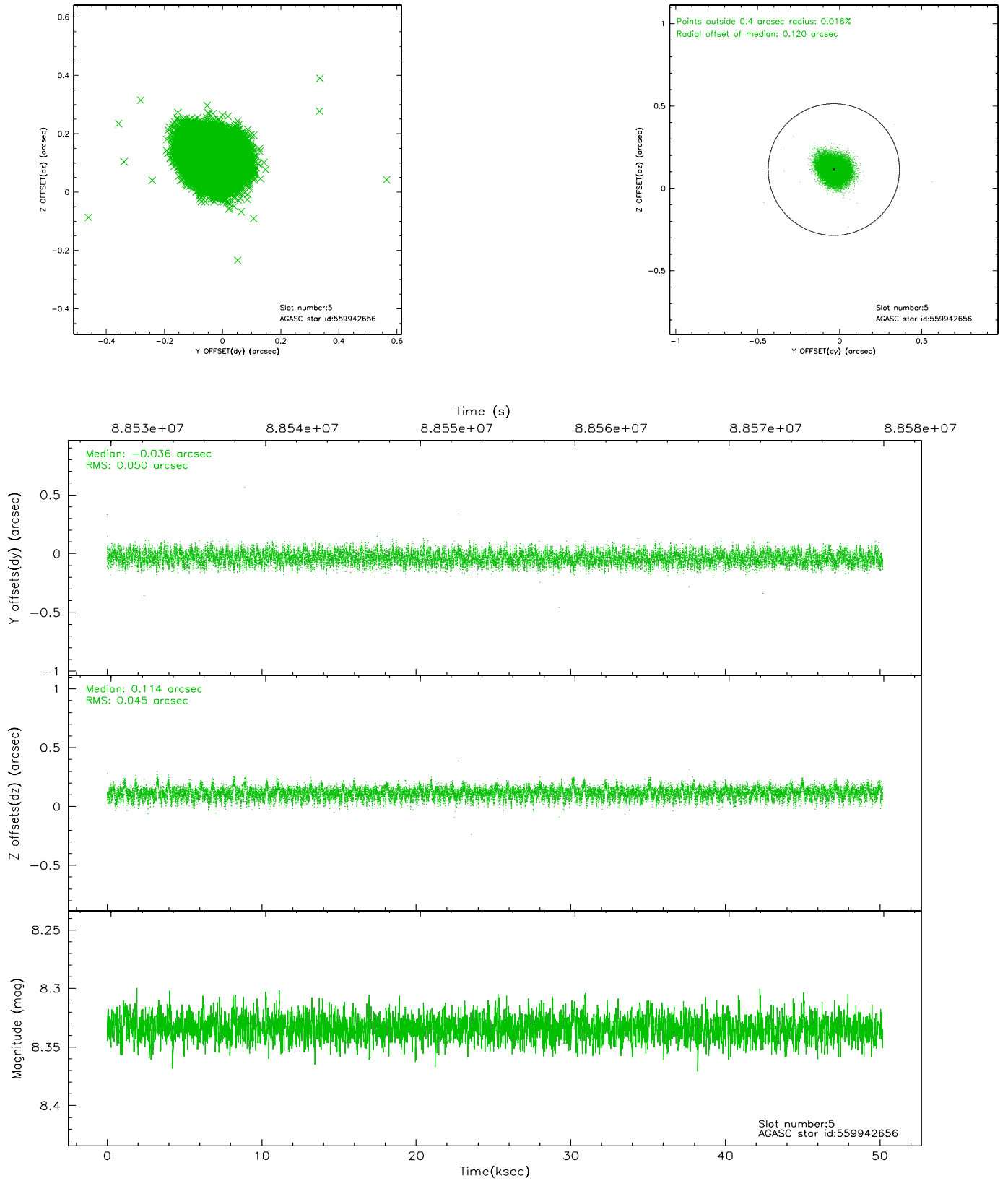
2.4.1 Slot 3



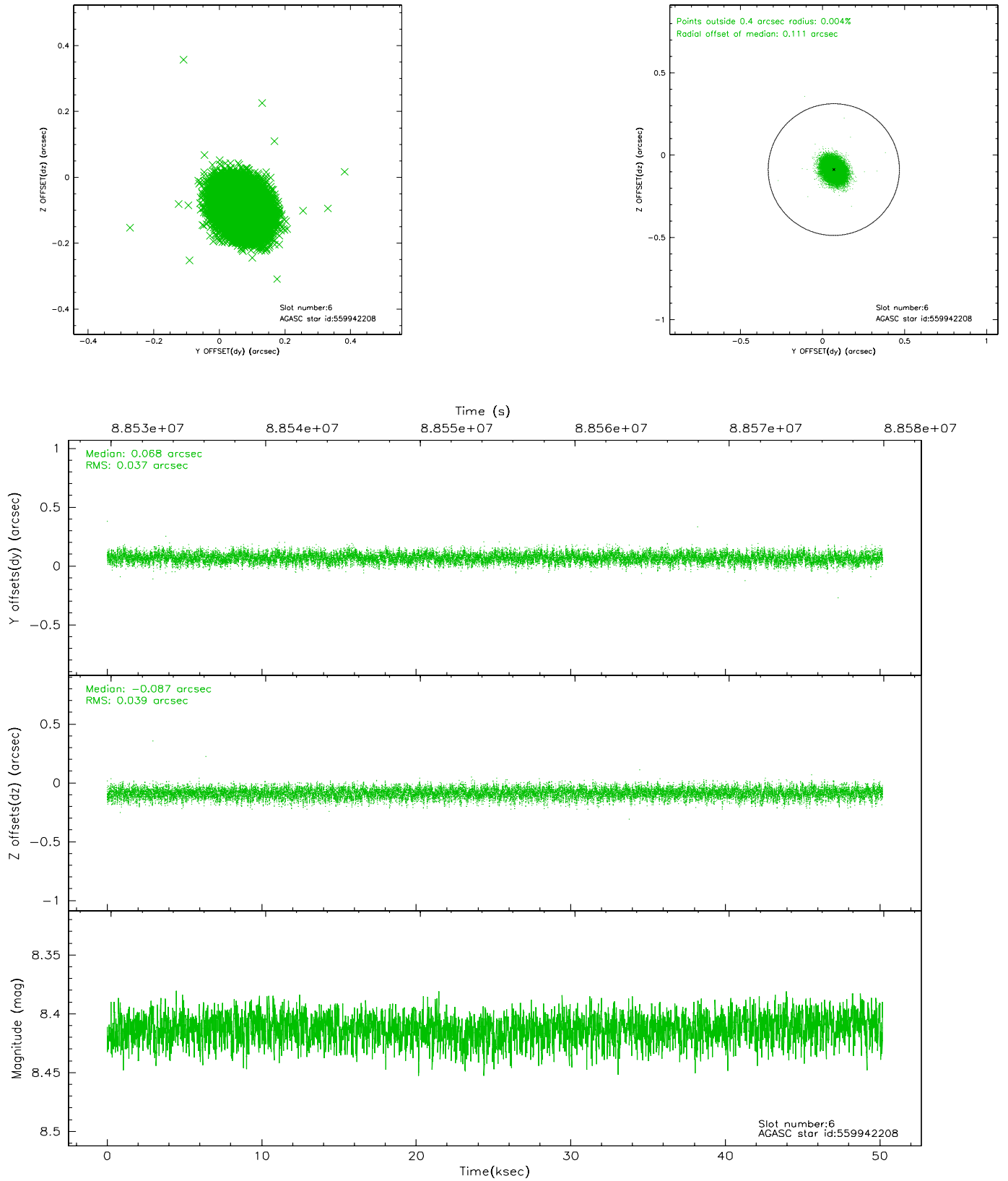
2.4.2 Slot 4



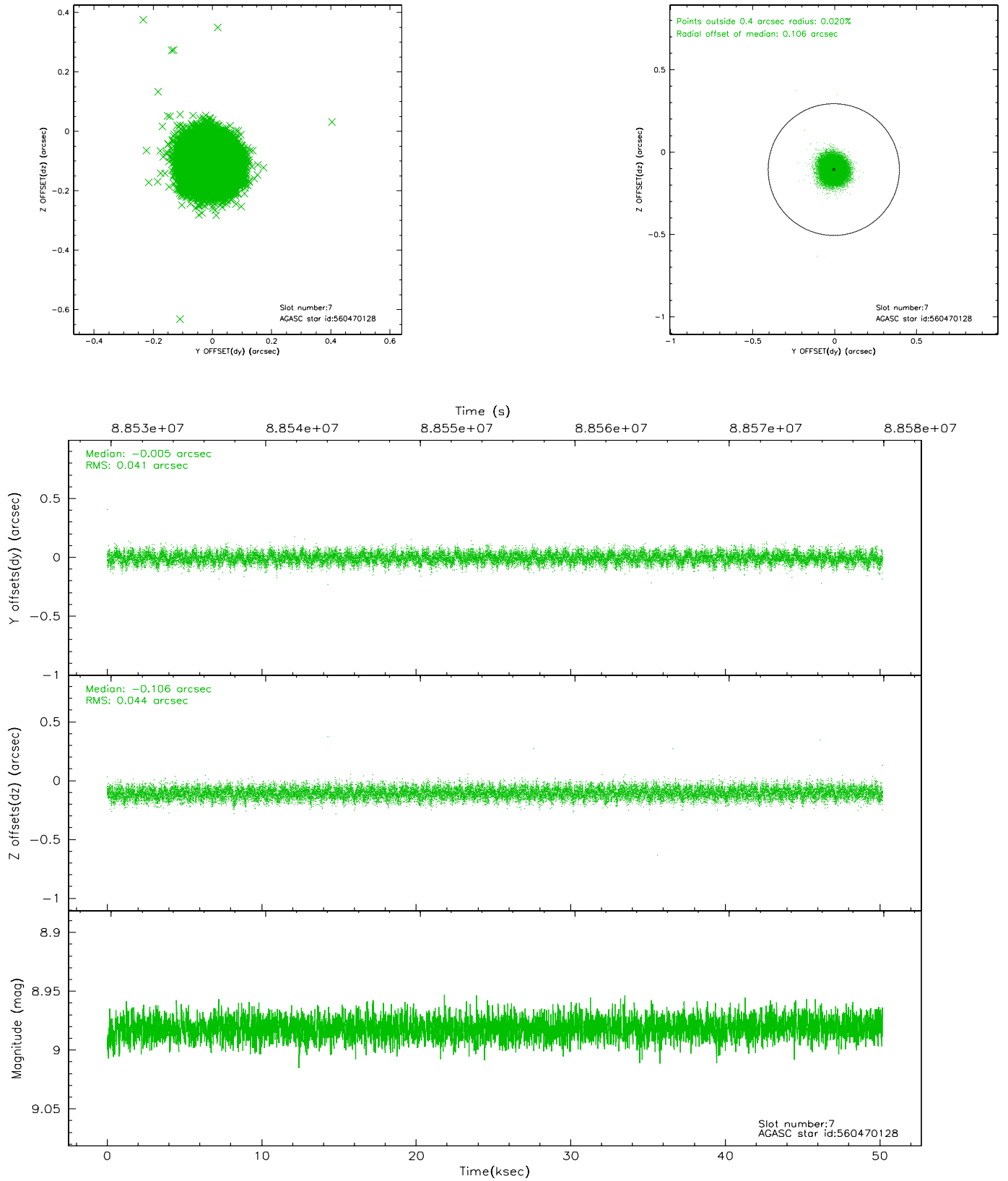
2.4.3 Slot 5



2.4.4 Slot 6

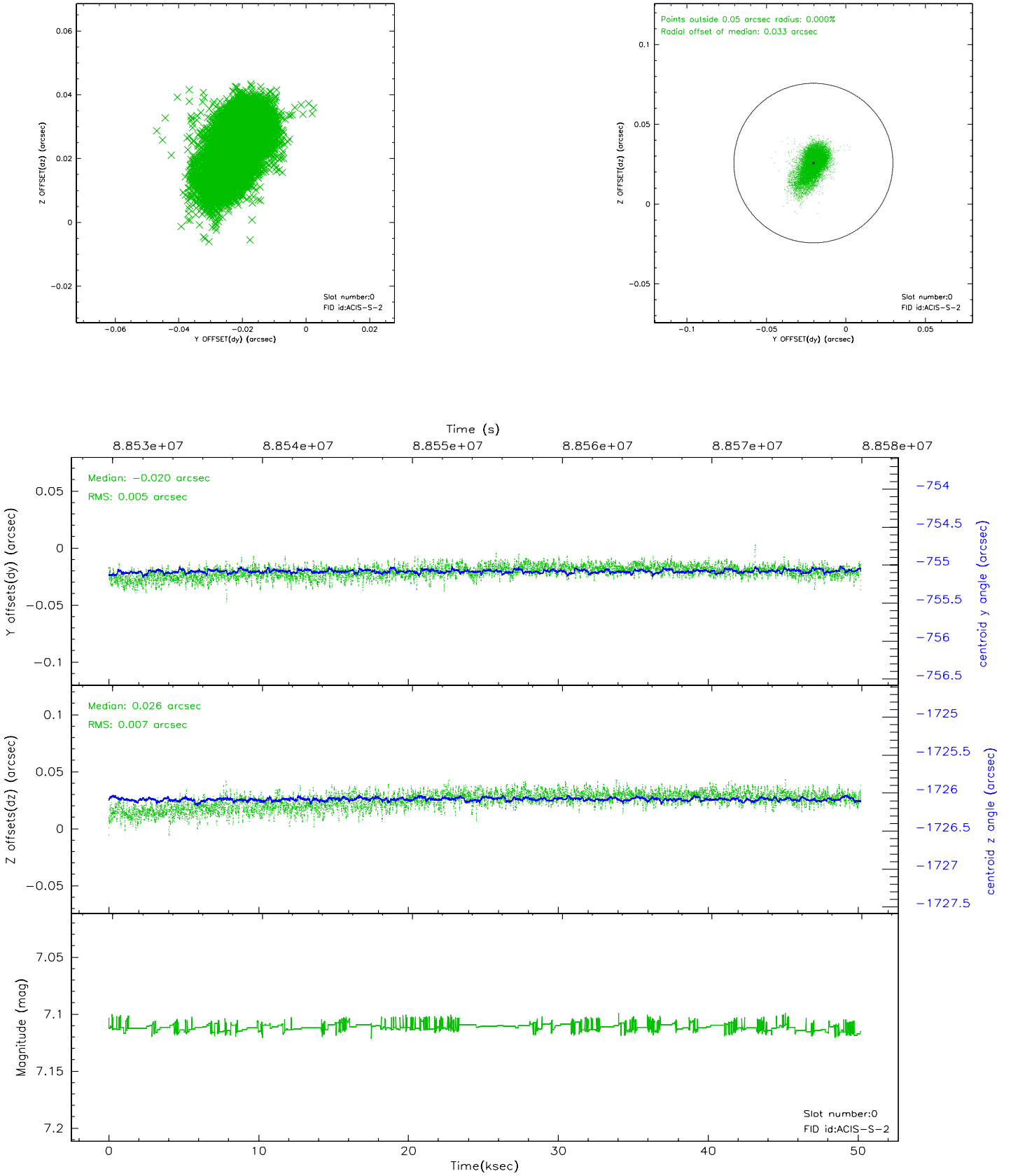


2.4.5 Slot 7

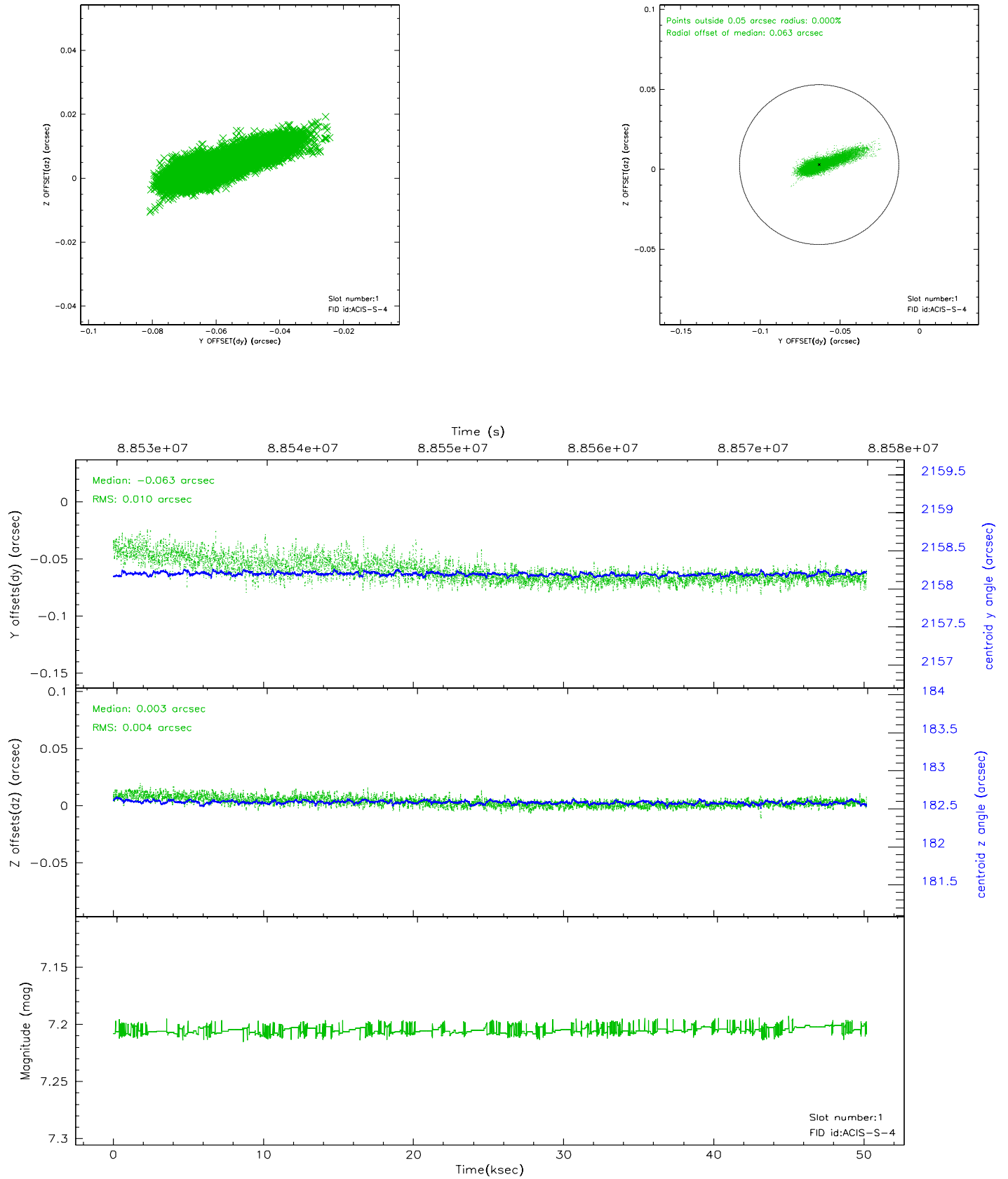


2.5 FID Slots

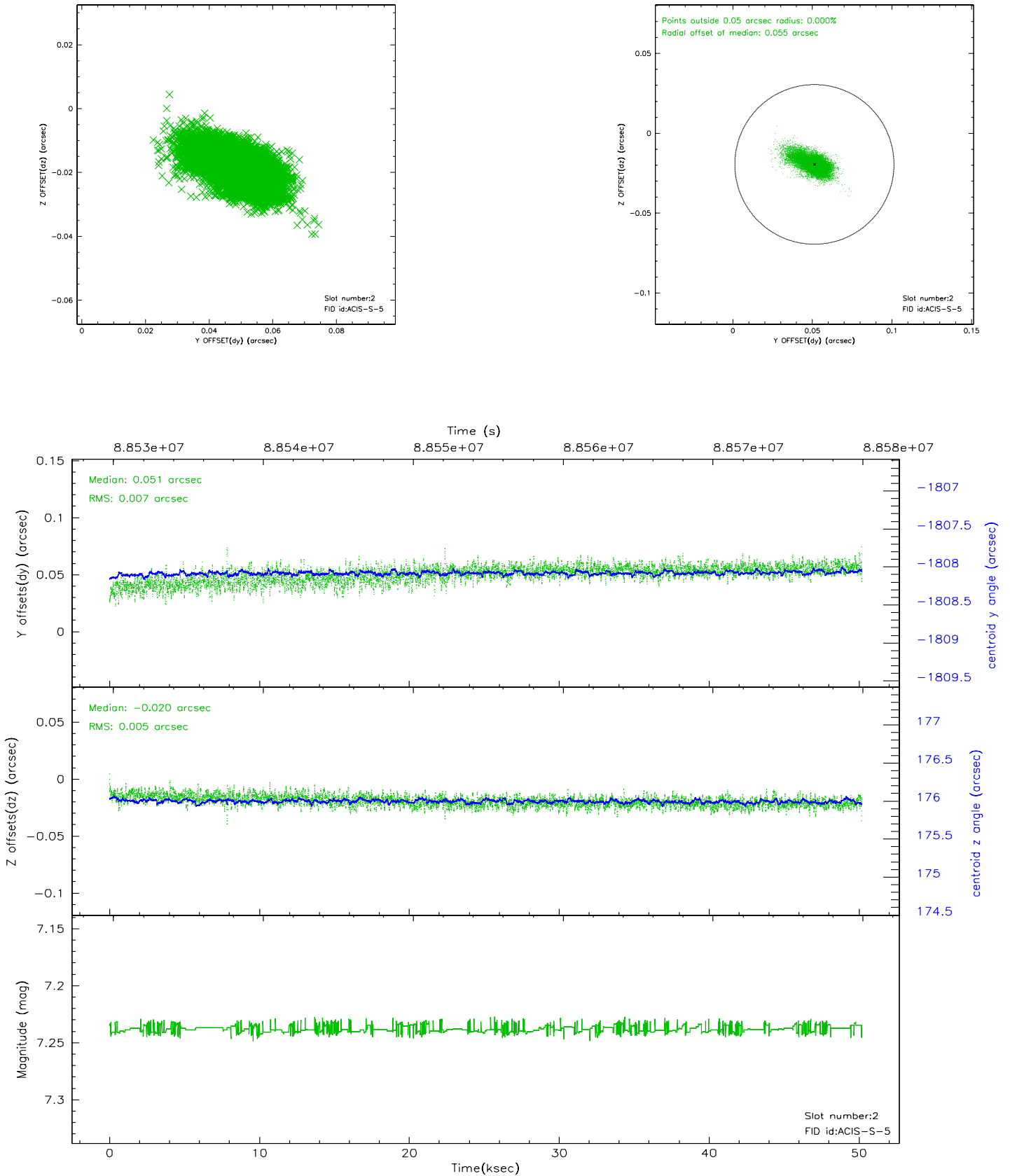
2.5.1 Slot 0



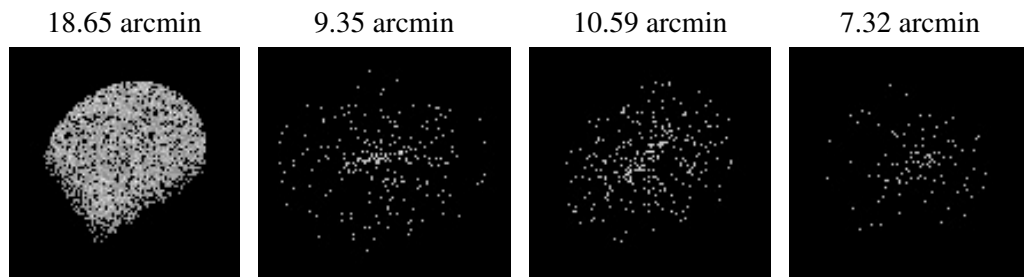
2.5.2 Slot 1



2.5.3 Slot 2



3 Point Sources



A Summary

A.1 Status

V&V Scientist	Jen Lauer
V&V Date (YYYY-MM-DD)	2007.06.12
V&V Edition	1
V&V Disposition and Status	OK
V&V Charge Time	49.75

A.2 Comments