

# V&V Reference Report

## L2 ASCDS Version : 8.4.5

Observation 708 - L2 Version 3  
Chandra X-Ray Center

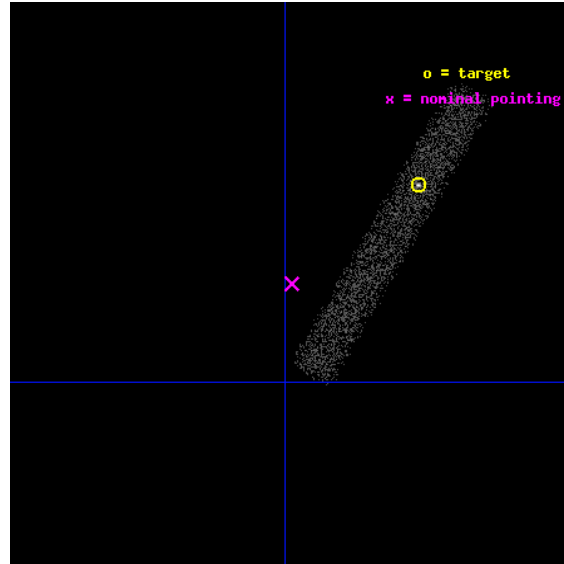
L2 Processing Date : Sep 4 2012

## Contents

<b>1</b>	<b>Front</b>	<b>2</b>
<b>2</b>	<b>OBI</b>	<b>3</b>
2.1	OBI . . . . .	3
2.1.1	Images . . . . .	3
2.1.2	Bias . . . . .	3
2.1.3	Parameters . . . . .	4
2.1.4	Events . . . . .	4
2.2	Compared Parameters . . . . .	5
2.3	Aspect . . . . .	6
2.4	Star Slots . . . . .	9
2.4.1	Slot 3 . . . . .	9
2.4.2	Slot 4 . . . . .	10
2.4.3	Slot 5 . . . . .	11
2.4.4	Slot 6 . . . . .	12
2.4.5	Slot 7 . . . . .	13
2.5	FID Slots . . . . .	14
2.5.1	Slot 0 . . . . .	14
2.5.2	Slot 1 . . . . .	15
2.5.3	Slot 2 . . . . .	16
<b>A</b>	<b>Summary</b>	<b>17</b>
A.1	Status . . . . .	17
A.2	Comments . . . . .	17

# 1 Front

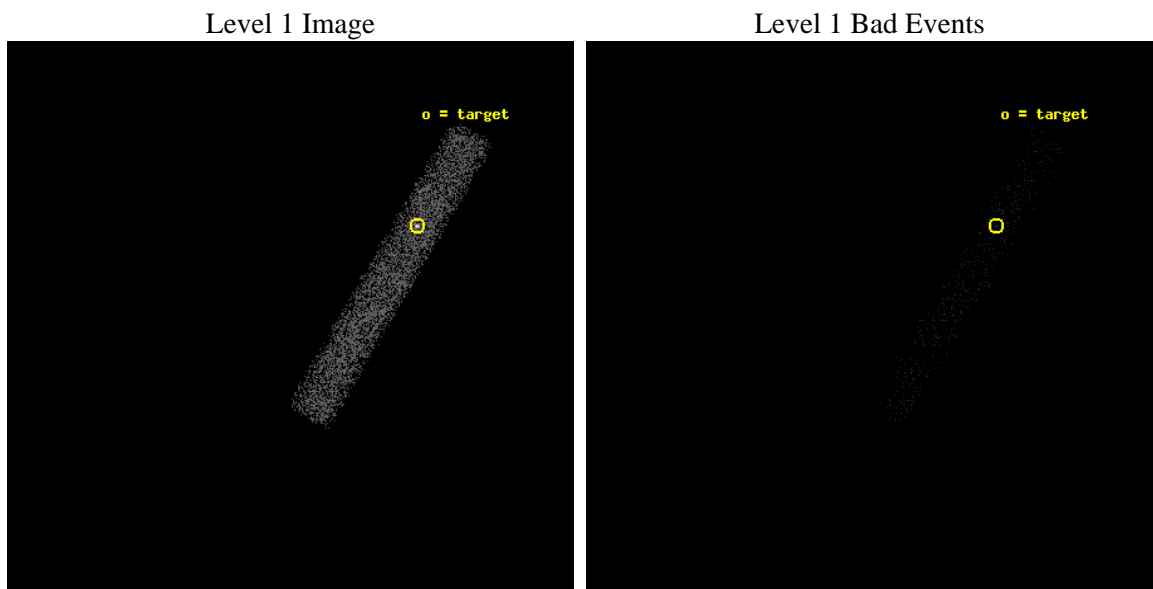
seq_num	400075	Sequence number
obs_id	708	Observation id
title	TEMPORAL EVOLUTION OF TRANSIENT TYPE I BURSTERS IN QUIESCENCE	Prop
observer	PROF. LARS BILDSTEN	Principal investigator
object	AQL X-1	Source name
dtcycle	0	&#160
cycle	P	events from which exps? Prim/Second/Both
ra_targ	287.816667	Observer's specified target RA [deg]
dec_targ	0.585111	Observer's specified target Dec [deg]
ra_nom	287.87197661804	Nominal RA [deg]
dec_nom	0.54247062652878	Nominal Dec [deg]
roll_nom	300.39397771513	Nominal Roll [deg]
revision	3	Processing version of data
ontime	7307.6001088917	Sum of GTIs [s]
livetime	6627.6075720041	Livetime [s]
ontime7	7307.6001088917	Sum of GTIs [s]
l2events	5783	Number of level 2 events



## 2 OBI

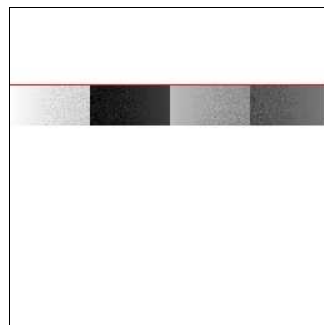
### 2.1 OBI

#### 2.1.1 Images



#### 2.1.2 Bias

Chip 7



### 2.1.3 Parameters

obi_num	1	Obi number	sched_exp_time	7325.000000	[s] Scheduled observation exposure time
ascdsver	8.4.5	Processing system revision	ontime	7307.6001088917	Sum of GTIs [s]
caldsver	4.5.1.1	&#160	ontime7	7307.6001088917	Sum of GTIs [s]
date	2012-09-04T03:44:22	Date and time of file creation	l1events	19167	Number of level 1 events
revision	3	Processing version of data			

### 2.1.4 Events

	<b>ccd 7</b>
level 1 events	19167
rejected events	13204
rejected %	68%

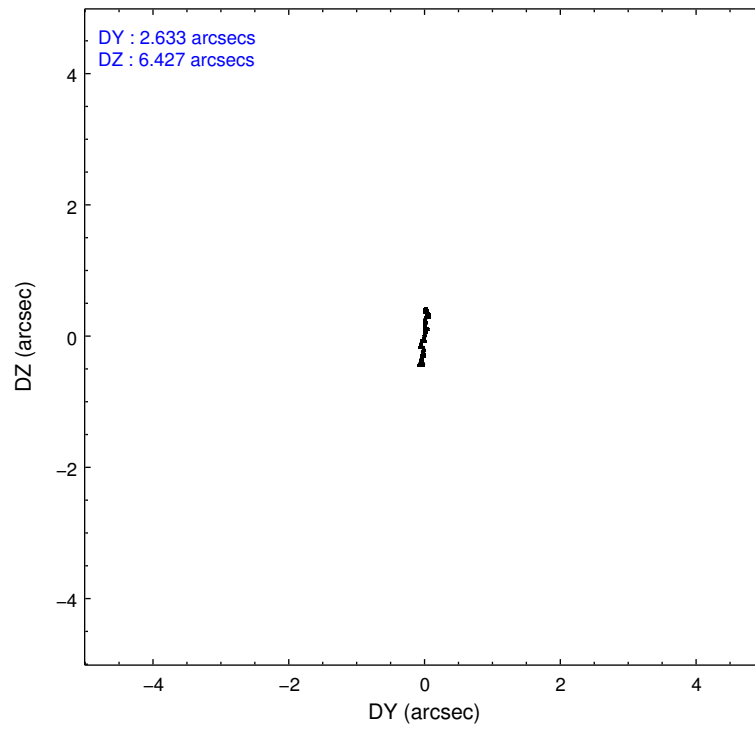
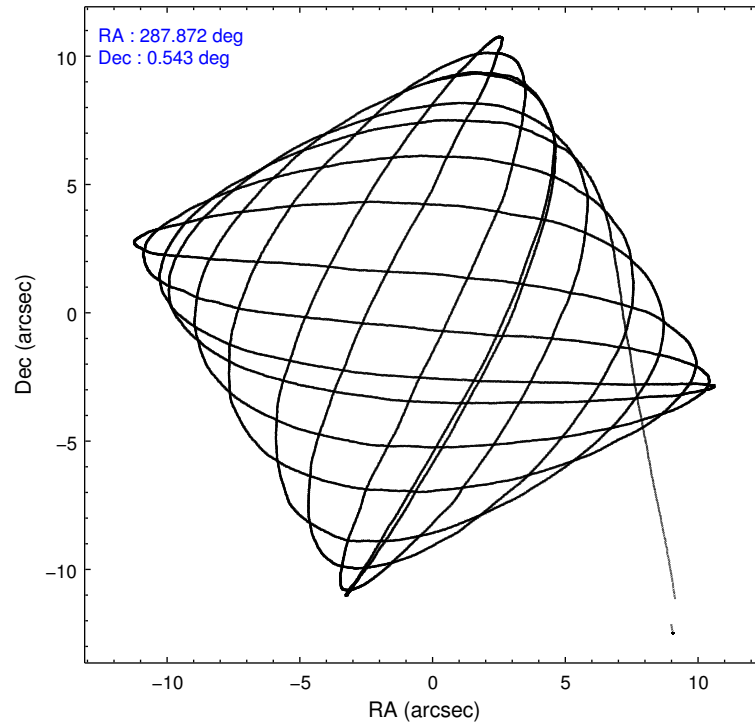
	<b>ccd 7</b>
grade 0 events	3255
	16%
grade 1 events	18
	0%
grade 2 events	3167
	16%
grade 3 events	1725
	8%
grade 4 events	1656
	8%
grade 5 events	780
	4%
grade 6 events	5030
	26%
grade 7 events	3536
	18%

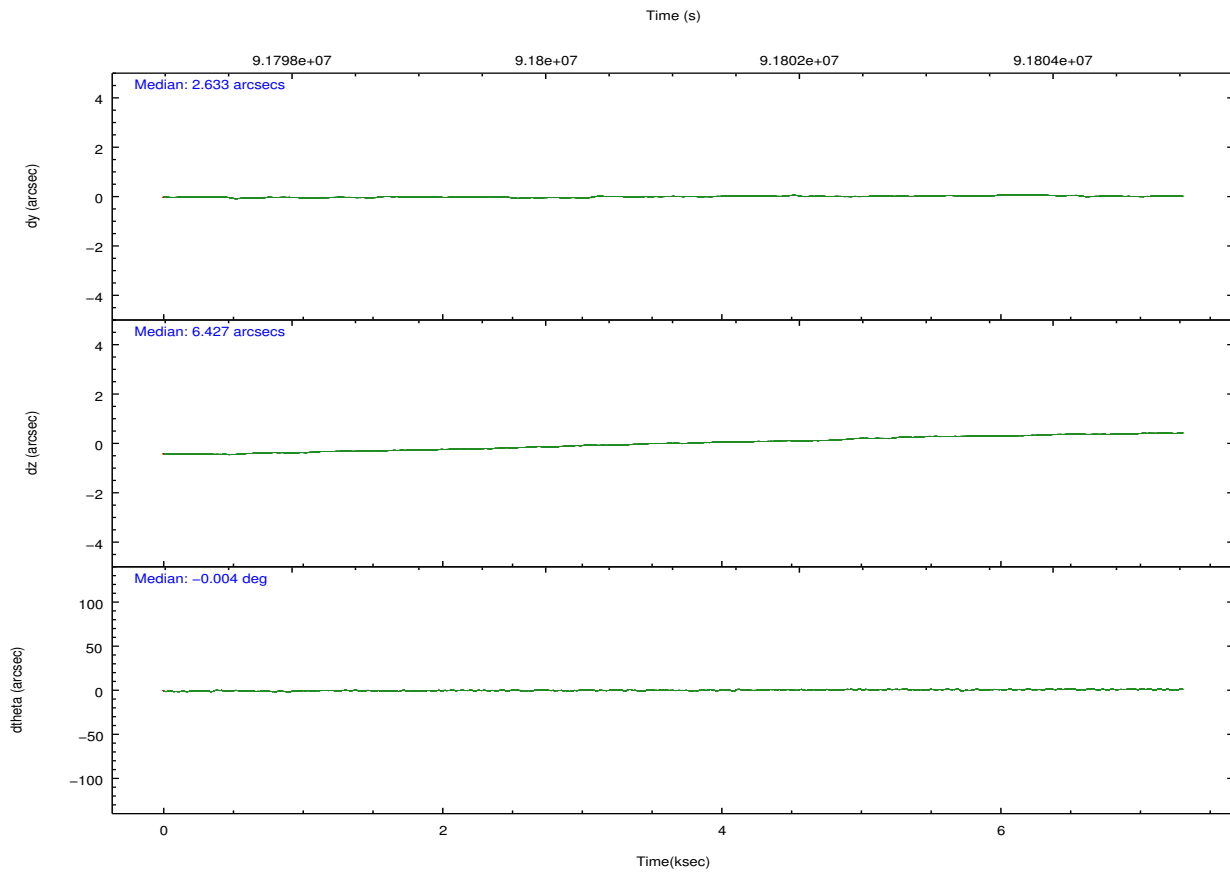
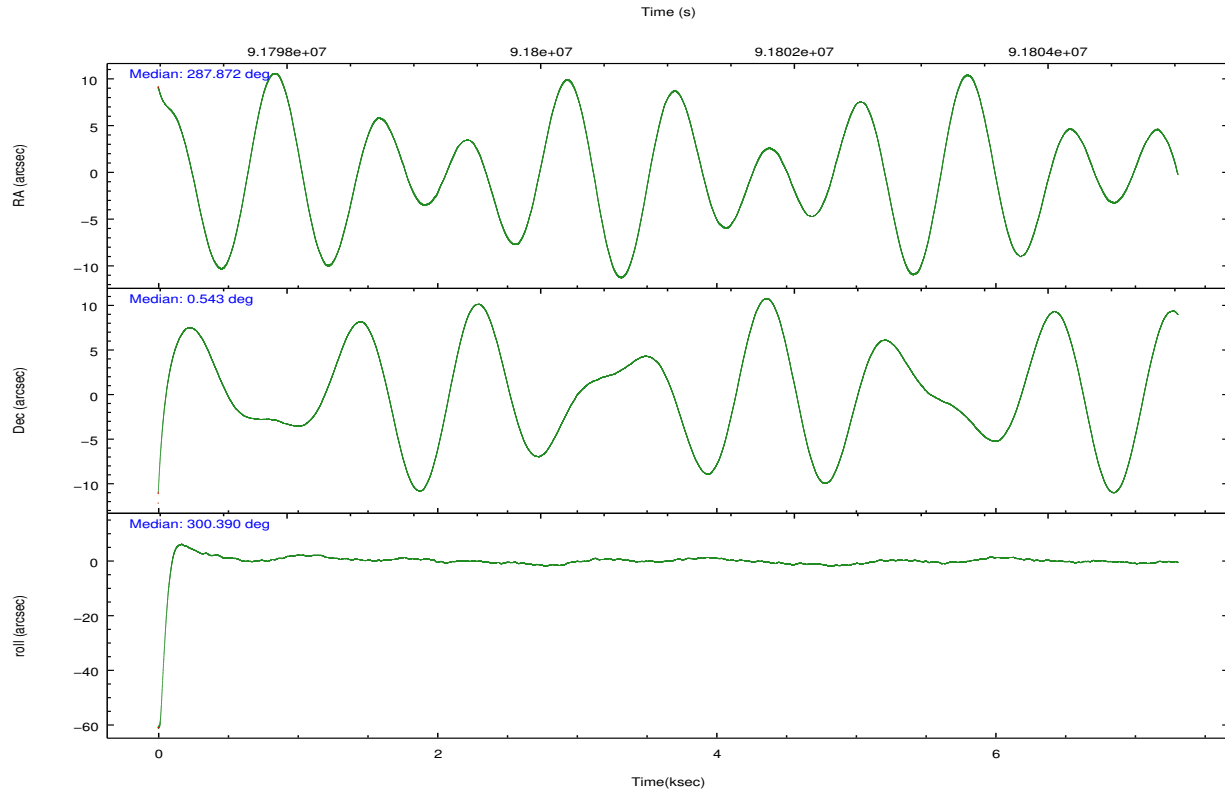


## 2.2 Compared Parameters

Parameter	Planned	Actual	Parameter	Planned	Actual
Instrument	ACIS	ACIS	Obspar format version number	7	7
Detector	ACIS-7	ACIS-7	Obspar file type	PREDICTED	ACTUAL
Grating	NONE	NONE	Obspar update status	NONE	UPDATED
Data mode	VFAINT	VFAINT	Number of optional ACIS chips dropped	0	0
Observation mode	POINTING	POINTING	On-chip summing requested	N	N
[deg] Pointing RA	287.848052	287.8719766180361	Subarray requested	CUSTOM	1/8
[deg] Pointing Dec	0.555763	0.5424706265287791	Subarray start row	650	650
[deg] Pointing Roll	300.237709	300.3939777151323	Subarray row count	128	128
[mm] SIM focus pos	-0.684267	-0.6828225247311905	Alternating exposures requested	N	N
[mm] SIM defocus	0	0.001444936568705701	[s] Primary exposure time	0.000000	0.4
[mm] SIM translation stage pos	-190.132523	-190.1400660498719			
[mm] SIM translation stage offset	0	0.00754346686406393			
[s] Observation start time (MET)	91797332.184000	91795959.427947			
Observation start date	2000-11-28T11:14:28	2000-11-28T10:52:39			
[s] Observation end time (MET)	91804657.184000	91804914.85328899			
Observation end date	2000-11-28T13:16:33	2000-11-28T13:21:54			
Read mode	TIMED	TIMED			

## 2.3 Aspect



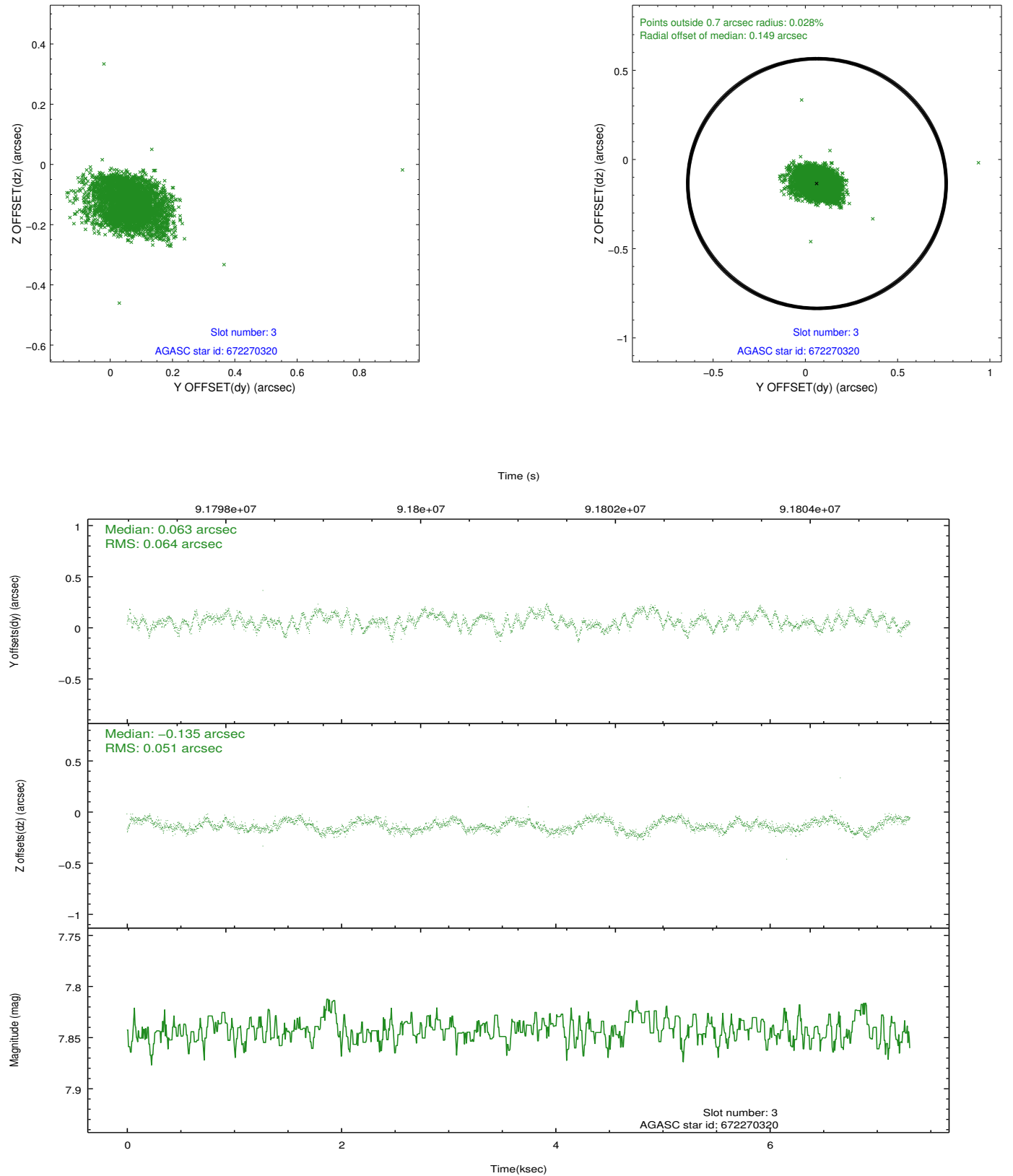


### Slot Statistics

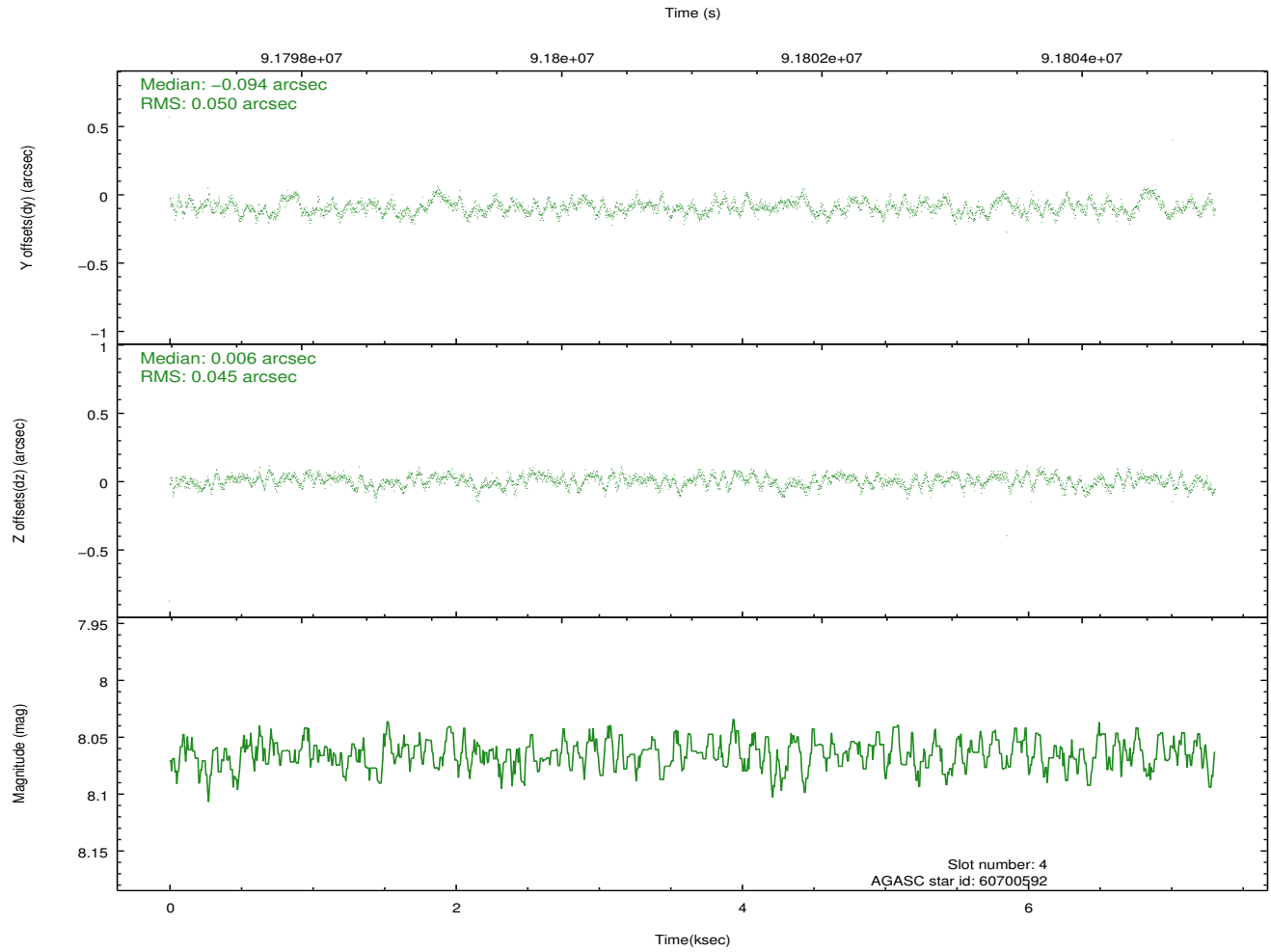
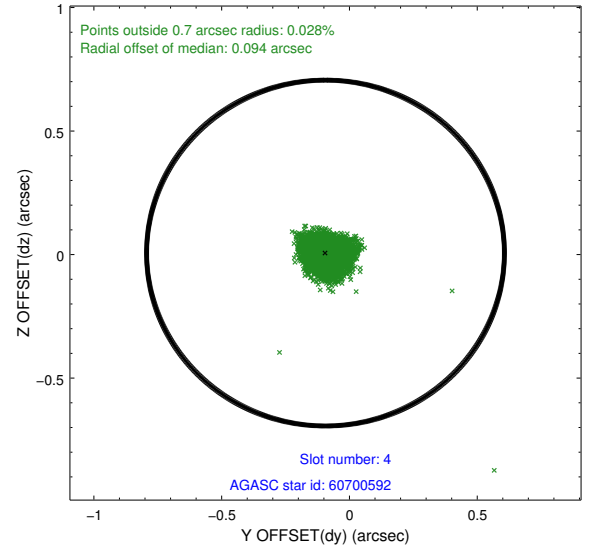
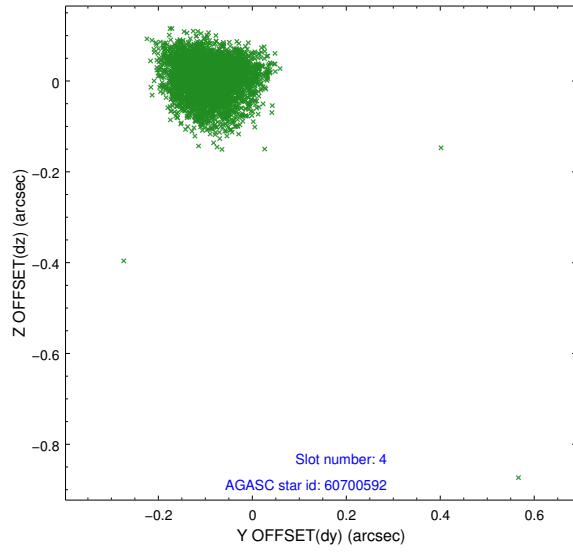
slot	status	id	mag	n_pts	med_dy	med_dz	dr1	dr2	ra	dec	mean_y	mean_z
0	FID	ACIS-S-2	7.11	1783	-0.010	-0.019	0.009	0.015	0.000000	0.000000	-755.26	-1727.59
1	FID	ACIS-S-4	7.21	1783	0.005	-0.012	0.008	0.014	0.000000	0.000000	2157.67	180.11
2	FID	ACIS-S-6	7.35	1783	-0.023	0.039	0.008	0.012	0.000000	0.000000	407.70	818.44
3	GUIDE	672270320	7.84	3566	0.063	-0.135	0.085	0.138	287.786086	-0.258303	2420.76	-1668.51
4	GUIDE	60700592	8.06	3566	-0.094	0.006	0.068	0.108	287.530354	0.932002	-1744.52	-306.37
5	GUIDE	60712504	8.88	3566	0.108	0.114	0.071	0.115	288.588609	0.262689	2254.48	1772.37
6	GUIDE	60706688	8.73	3566	0.043	-0.046	0.072	0.111	287.637938	0.689635	-795.60	-410.24
7	GUIDE	60714072	8.95	3564	-0.133	0.060	0.108	0.183	288.094723	1.368496	-2080.30	2240.42

## 2.4 Star Slots

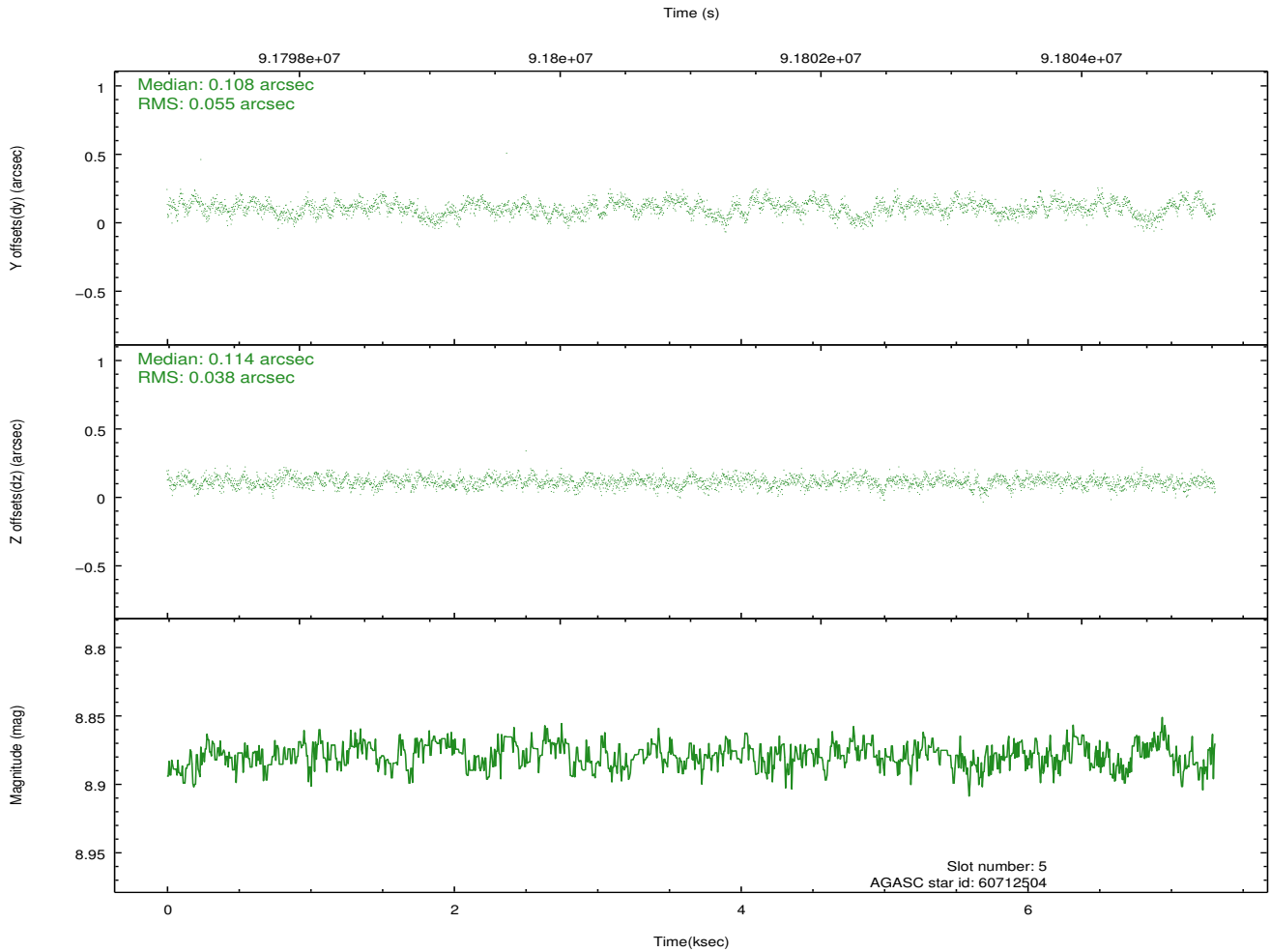
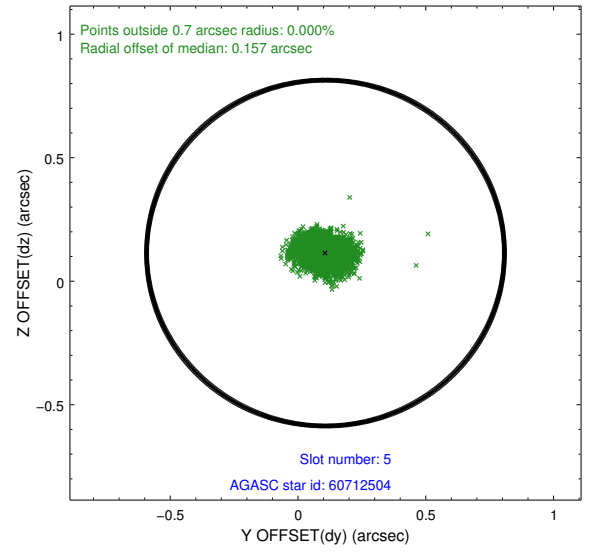
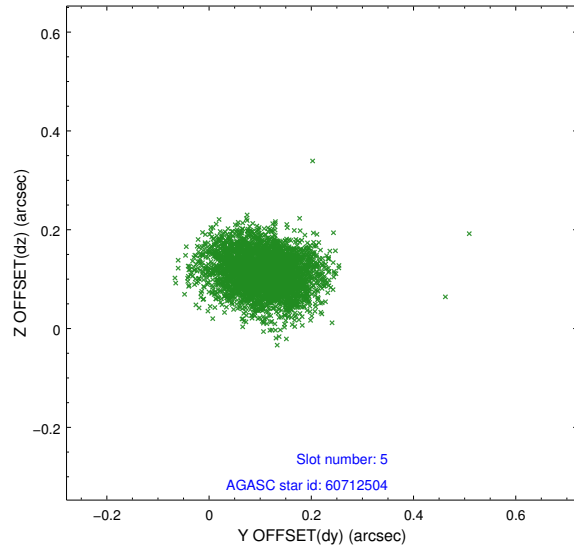
### 2.4.1 Slot 3



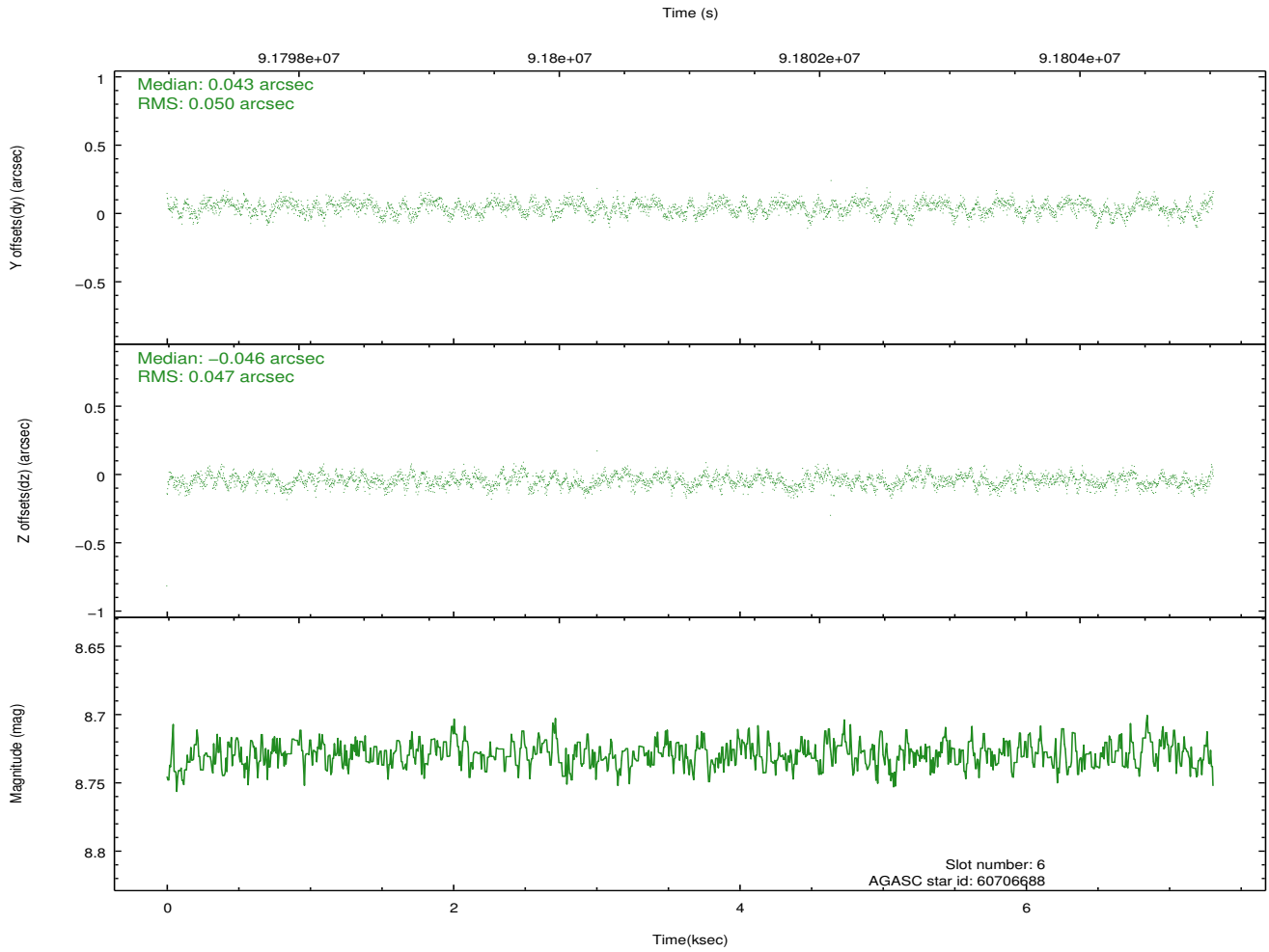
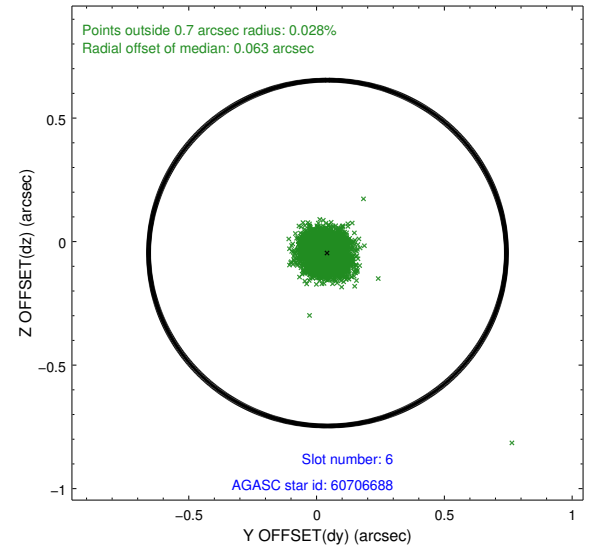
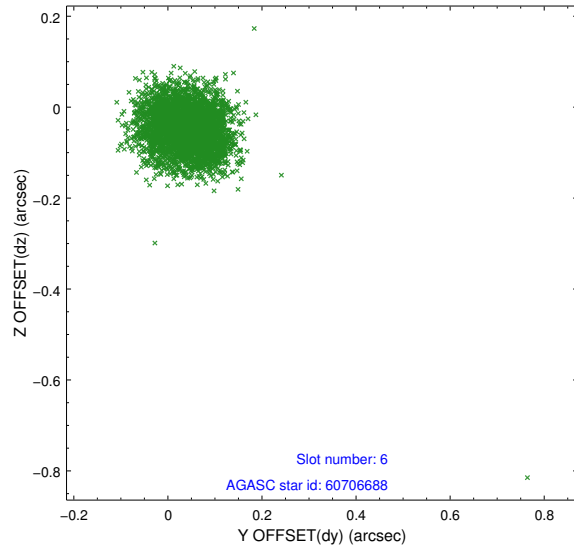
## 2.4.2 Slot 4



### 2.4.3 Slot 5

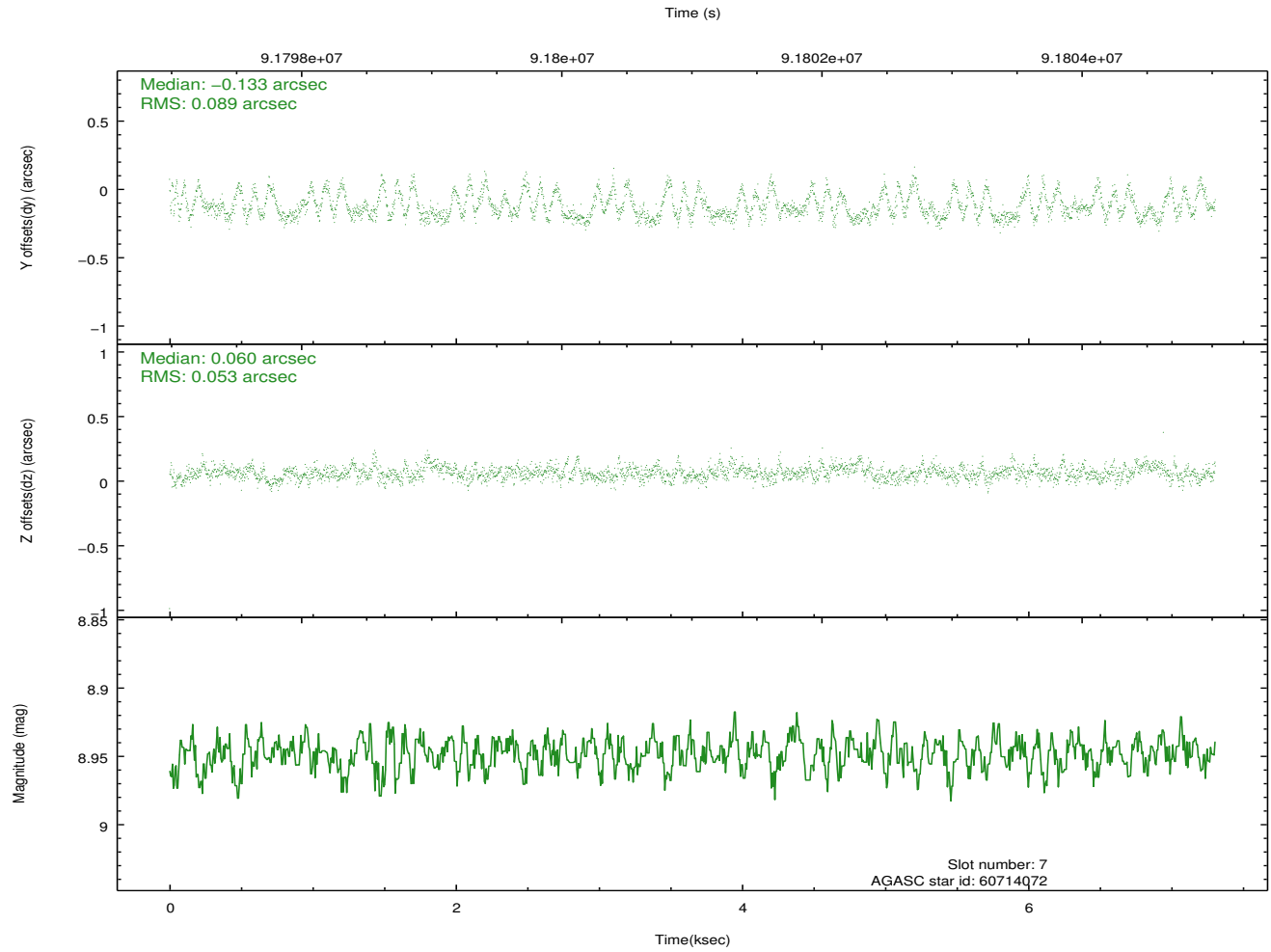
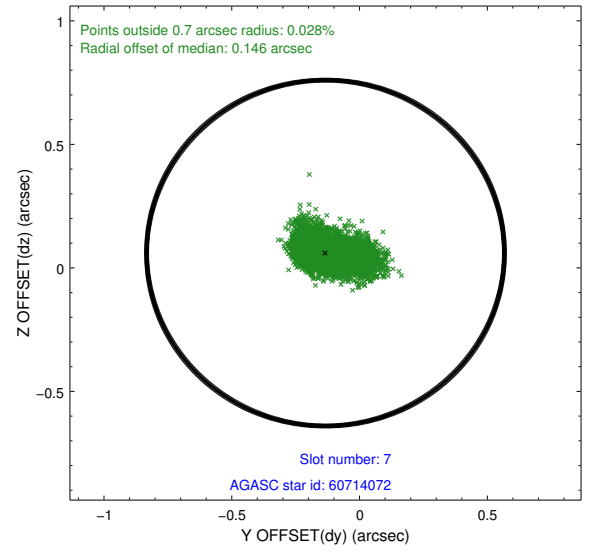
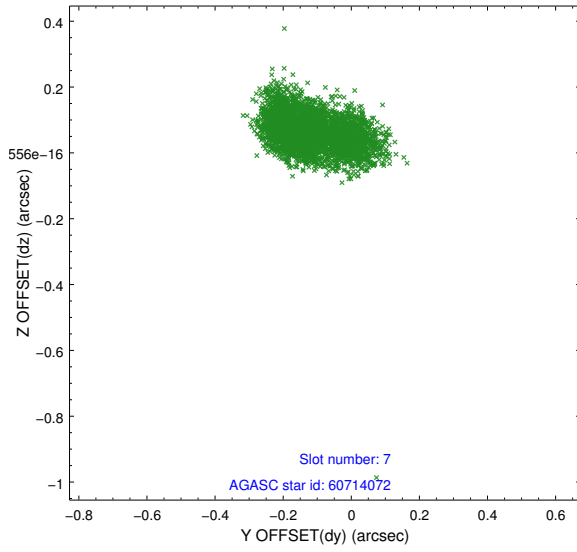


## 2.4.4 Slot 6



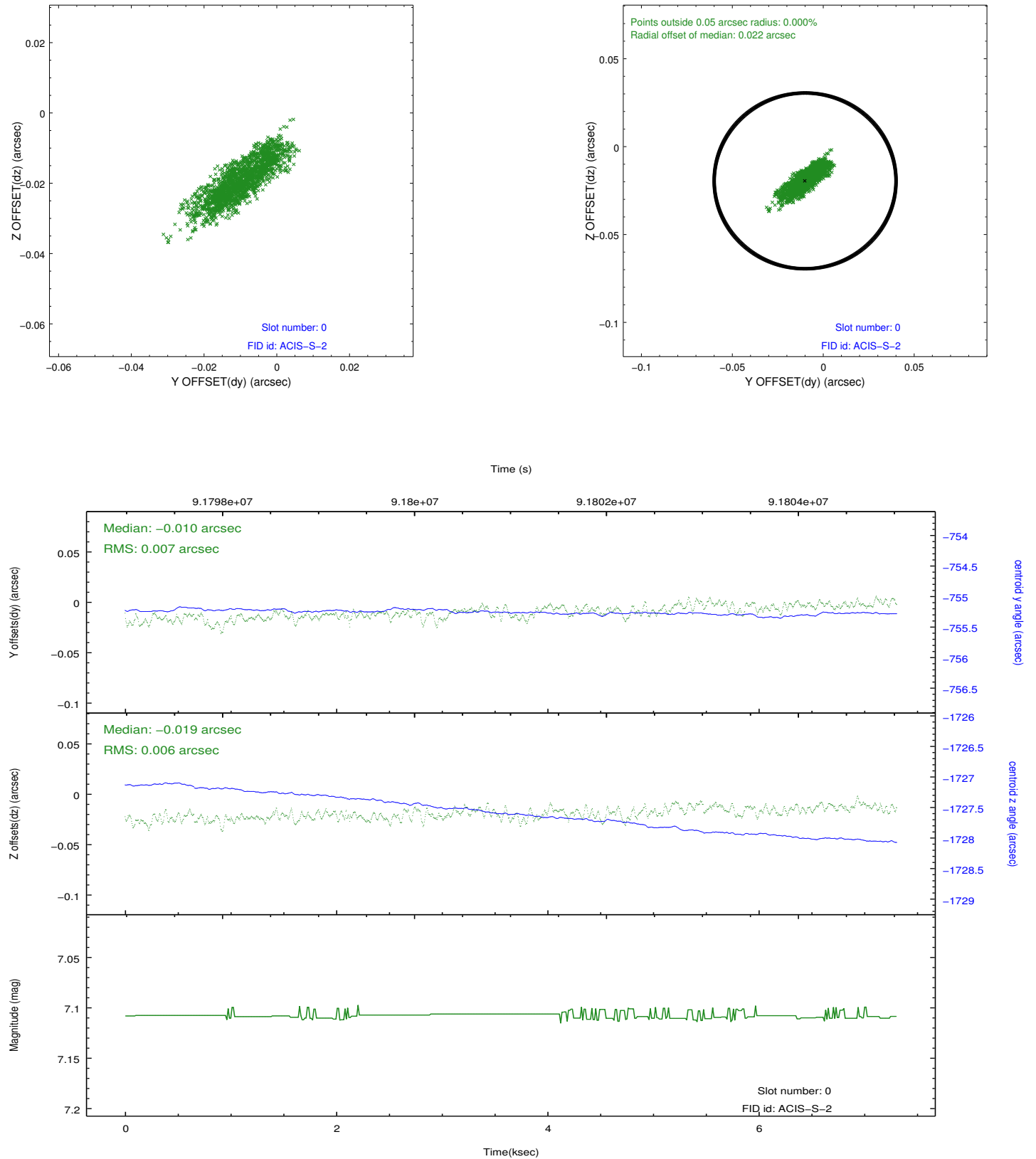


## 2.4.5 Slot 7

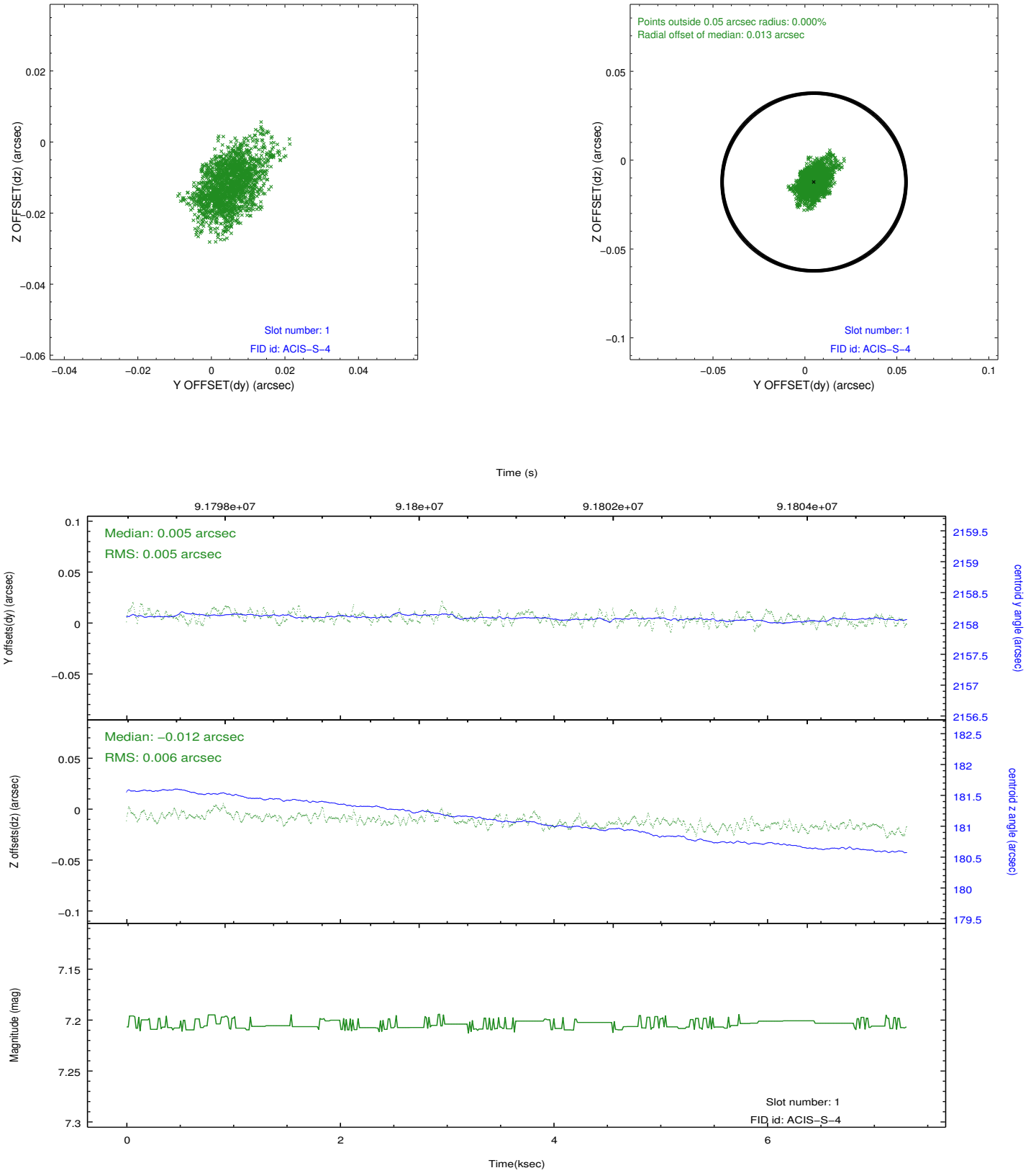


## 2.5 FID Slots

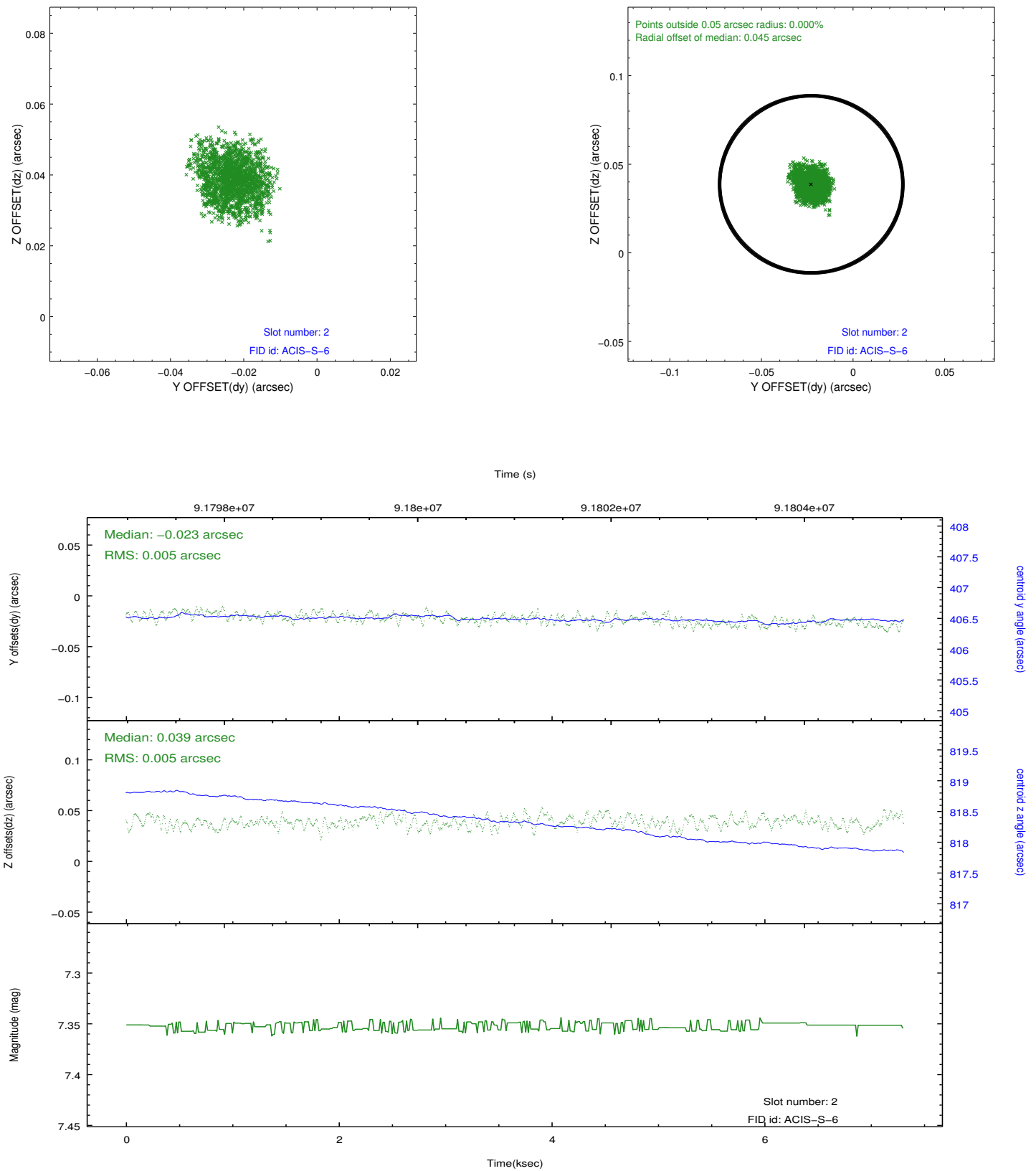
### 2.5.1 Slot 0



## 2.5.2 Slot 1



### 2.5.3 Slot 2



## A Summary

### A.1 Status

V&V Scientist	Beth Sundheim
V&V Date (YYYY-MM-DD)	2012.09.11
V&V Edition	1
V&V Disposition and Status	OK
V&V Charge Time	7.307

### A.2 Comments