

V&V Reference Report

L2 ASCDS Version : 8.4.5

Observation 2308 - L2 Version 5
Chandra X-Ray Center

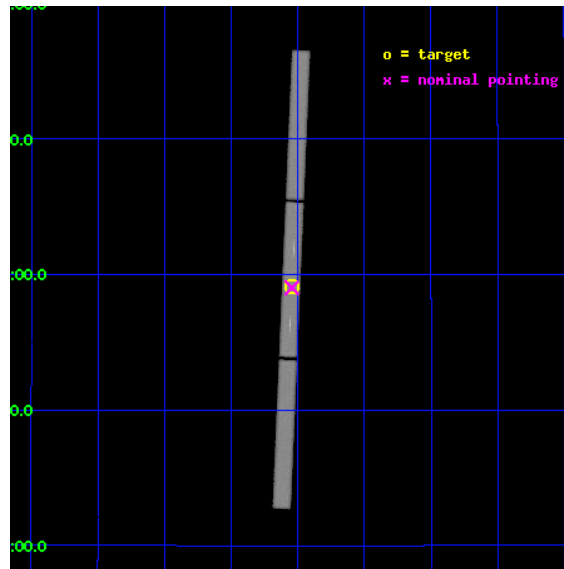
L2 Processing Date : Sep 5 2012

Contents

| | | |
|----------|-------------------------------|-----------|
| 1 | Front | 2 |
| 2 | OBI | 3 |
| 2.1 | OBI | 3 |
| 2.1.1 | Images | 3 |
| 2.1.2 | Parameters | 4 |
| 2.1.3 | Events | 4 |
| 2.2 | Compared Parameters | 5 |
| 2.3 | Aspect | 6 |
| 2.4 | Star Slots | 9 |
| 2.4.1 | Slot 3 | 9 |
| 2.4.2 | Slot 4 | 10 |
| 2.4.3 | Slot 5 | 11 |
| 2.4.4 | Slot 6 | 12 |
| 2.4.5 | Slot 7 | 13 |
| 2.5 | FID Slots | 14 |
| 2.5.1 | Slot 0 | 14 |
| 2.5.2 | Slot 1 | 15 |
| 2.5.3 | Slot 2 | 16 |
| 3 | Gratings | 17 |
| 3.1 | LETG Arm | 17 |
| A | Summary | 19 |
| A.1 | Status | 19 |
| A.2 | Comments | 19 |

1 Front

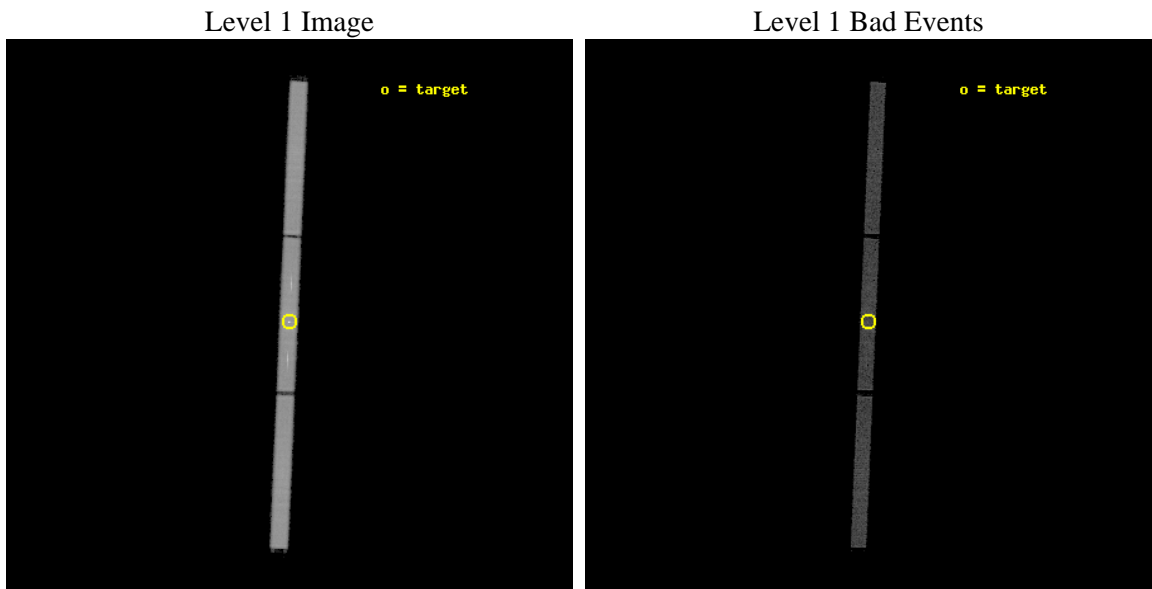
| | | |
|----------|--|---------------------------------------|
| seq_num | 300034 | Sequence number |
| obs_id | 2308 | Observation id |
| title | MULTIWAVELENGTH TOO OBSERVATIONS OF BRIGHT NOVAE IN OUTBURST | Propo |
| observer | Regents' Professor Sumner Starrfield | Principal investigator |
| object | V1494 Aql | Source name |
| ra_targ | 290.772 | Observer's specified target RA [deg] |
| dec_targ | 4.956 | Observer's specified target Dec [deg] |
| ra_nom | 290.77213509105 | Nominal RA [deg] |
| dec_nom | 4.9513373822467 | Nominal Dec [deg] |
| roll_nom | 272.38632408841 | Nominal Roll [deg] |
| revision | 5 | Processing version of data |
| ontime | 8150.0315561742 | [s] |
| livetime | 8107.7216706111 | Ontime multiplied by DTCOR |
| l2events | 324584 | Number of level 2 events |



2 OBI

2.1 OBI

2.1.1 Images



2.1.2 Parameters

| | | | | | |
|----------|---------------------|--------------------------------|----------------|-----------------|---|
| obi_num | 0 | Obi number | sched_exp_time | 8000.000000 | [s] Scheduled observation exposure time |
| ascdsver | 8.4.5 | Processing system revision | ontime | 8150.0315571725 | [s] |
| caldsver | 4.5.1.1 | | l1events | 564466 | Number of level 1 events |
| date | 2012-09-05T12:23:49 | Date and time of file creation | | | |
| revision | 5 | Processing version of data | | | |

2.1.3 Events

Level 1 Events

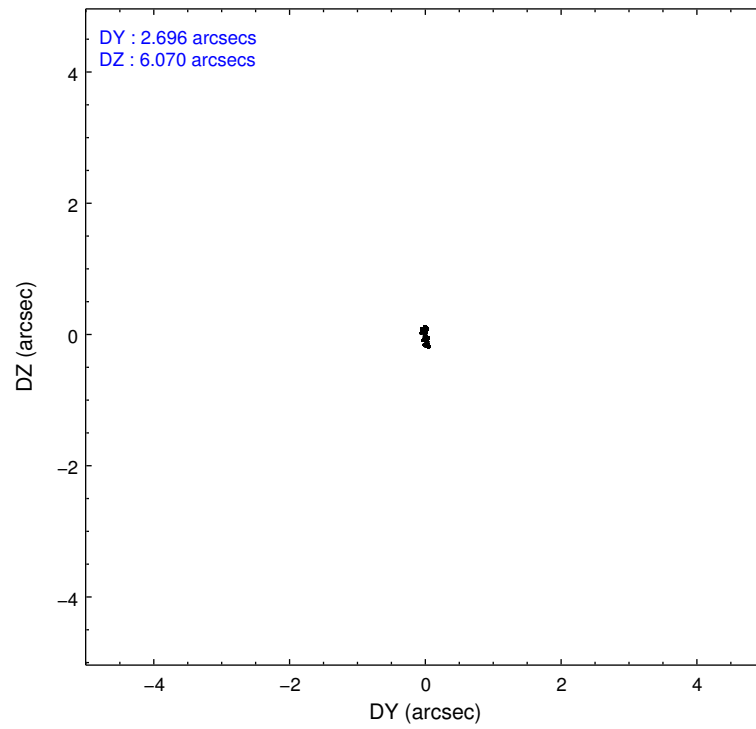
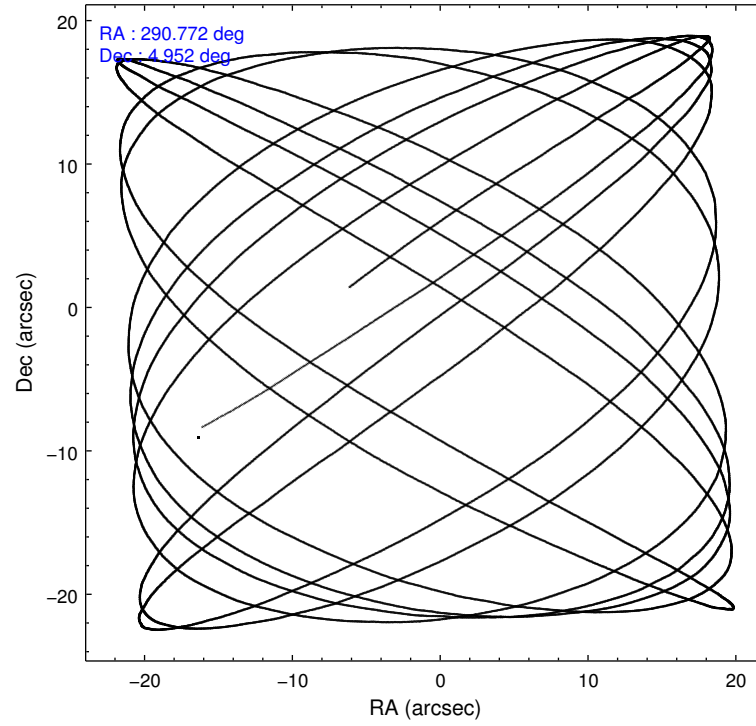
| | segment 1 | segment 2 | segment 3 |
|-----------------|----------------------|----------------------|----------------------|
| level 1 events | 184864 | 193133 | 186469 |
| rejected events | 32973 | 32496 | 33647 |
| rejected % | 17% | 16% | 18% |

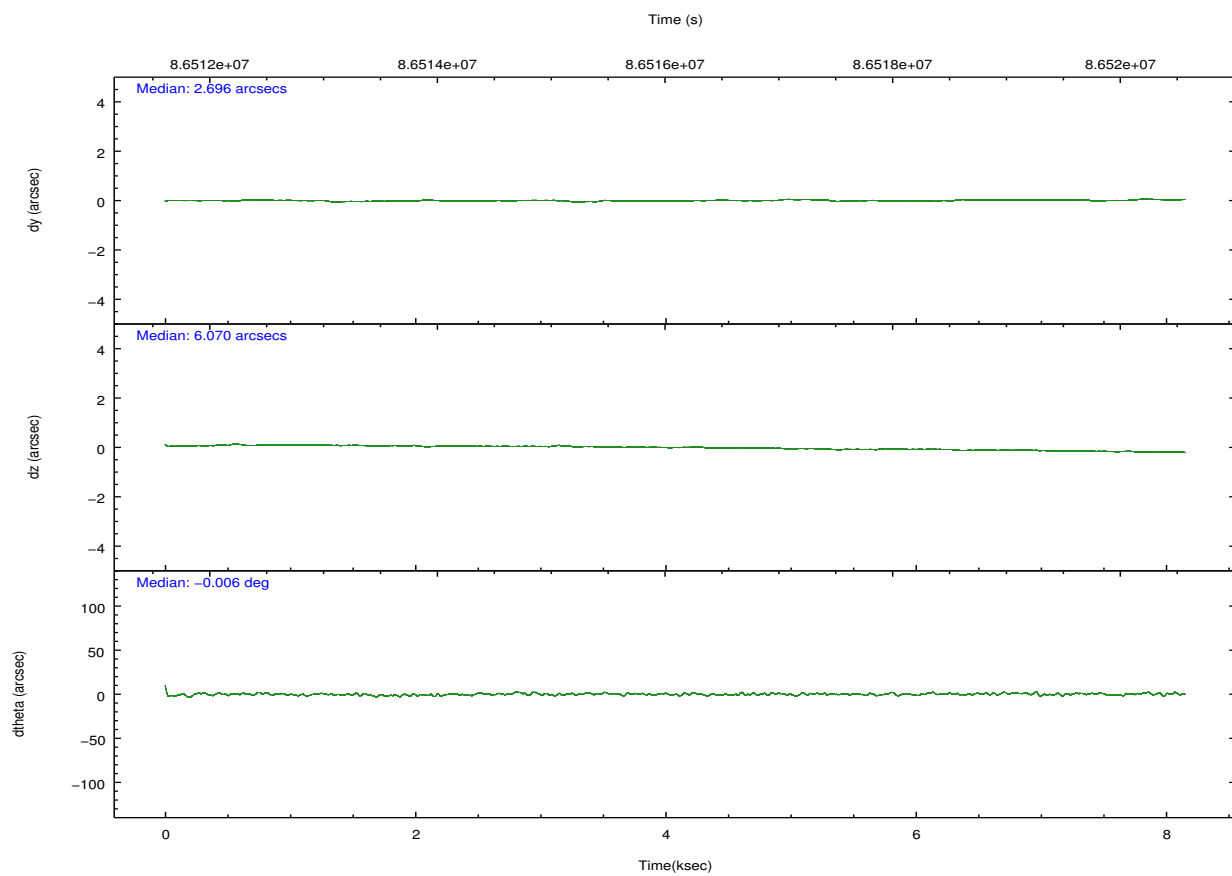
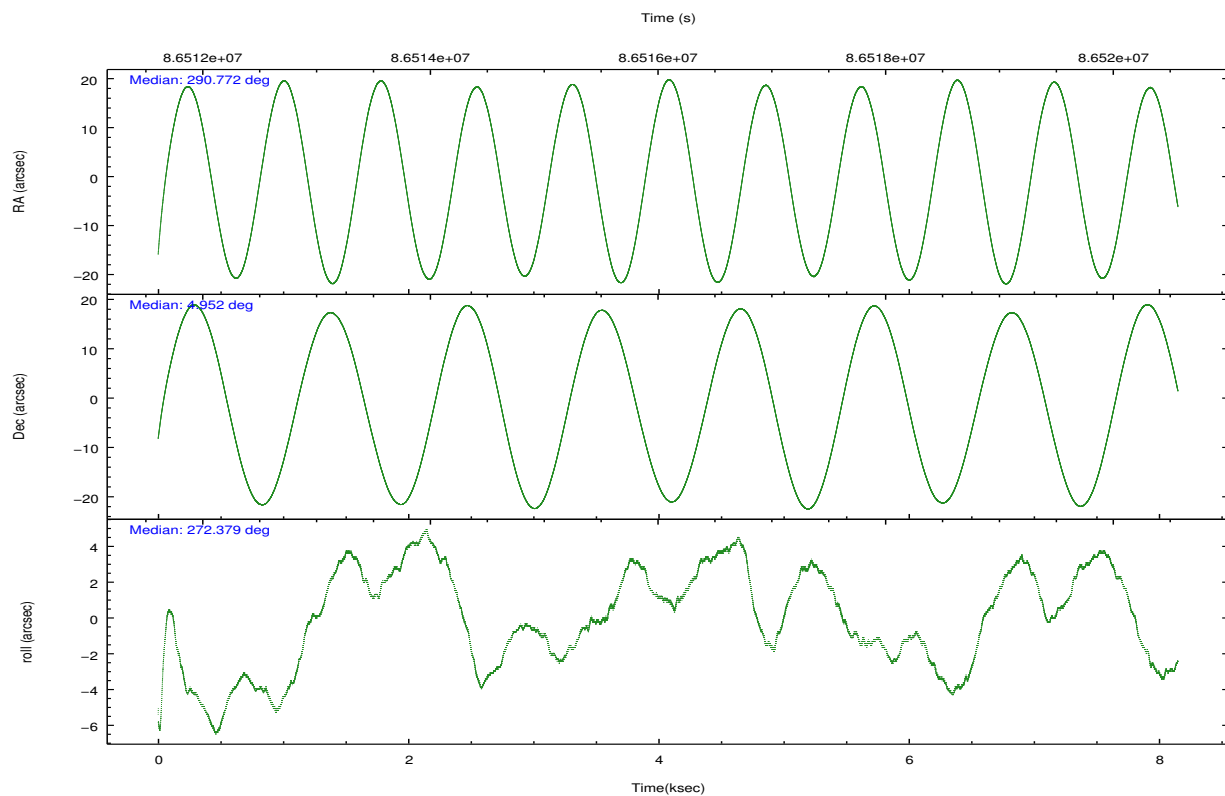
2.2 Compared Parameters

| Parameter | Planned | Actual |
|-----------------------------------|---------------------|----------------------|
| Instrument | HRC | HRC |
| Detector | HRC-S | HRC-S |
| Grating | LETG | LETG |
| Data mode | OBSERVING | OBSERVING |
| Observation mode | POINTING | POINTING |
| [deg] Pointing RA | 290.755503 | 290.7721350910548 |
| [deg] Pointing Dec | 4.974681 | 4.951337382246706 |
| [deg] Pointing Roll | 272.320424 | 272.3863240884069 |
| [mm] SIM focus pos | -1.429586 | -1.428180813131781 |
| [mm] SIM defocus | 0.1037507710433287 | 0.1051558262725154 |
| [mm] SIM translation stage pos | 250.455976 | 250.466033080201 |
| [mm] SIM translation stage offset | 0 | -0.01005468664627074 |
| [s] Observation start time (MET) | 86512164.184000 | 86511073.577727 |
| Observation start date | 2000-09-28T07:08:20 | 2000-09-28T06:51:13 |
| [s] Observation end time (MET) | 86520164.184000 | 86521016.590602 |
| Observation end date | 2000-09-28T09:21:40 | 2000-09-28T09:36:56 |

| Parameter | Planned | Actual |
|------------------------------|-----------|---------|
| Obspar format version number | 7 | 7 |
| Obspar file type | PREDICTED | ACTUAL |
| Obspar update status | NONE | UPDATED |

2.3 Aspect



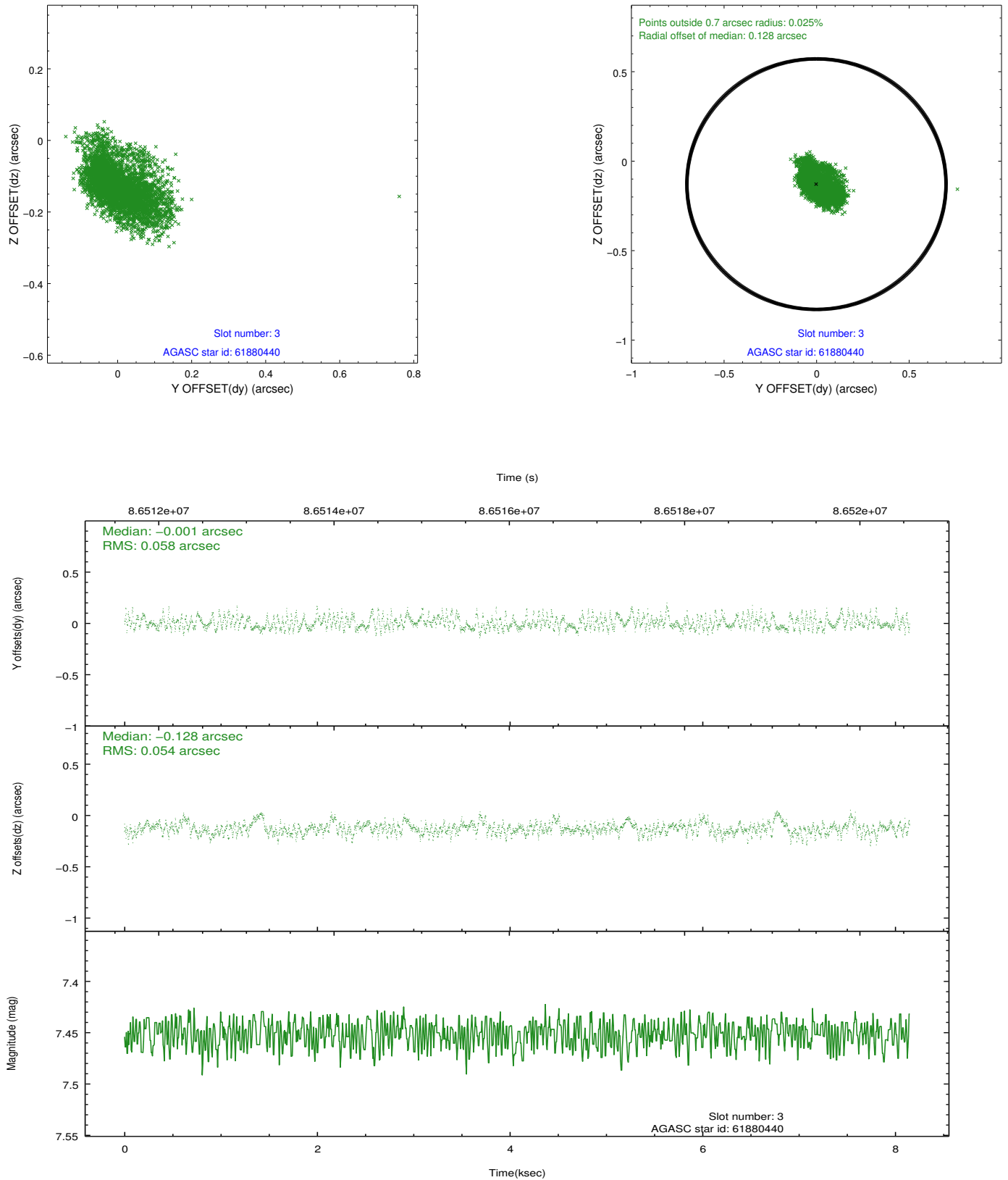


Slot Statistics

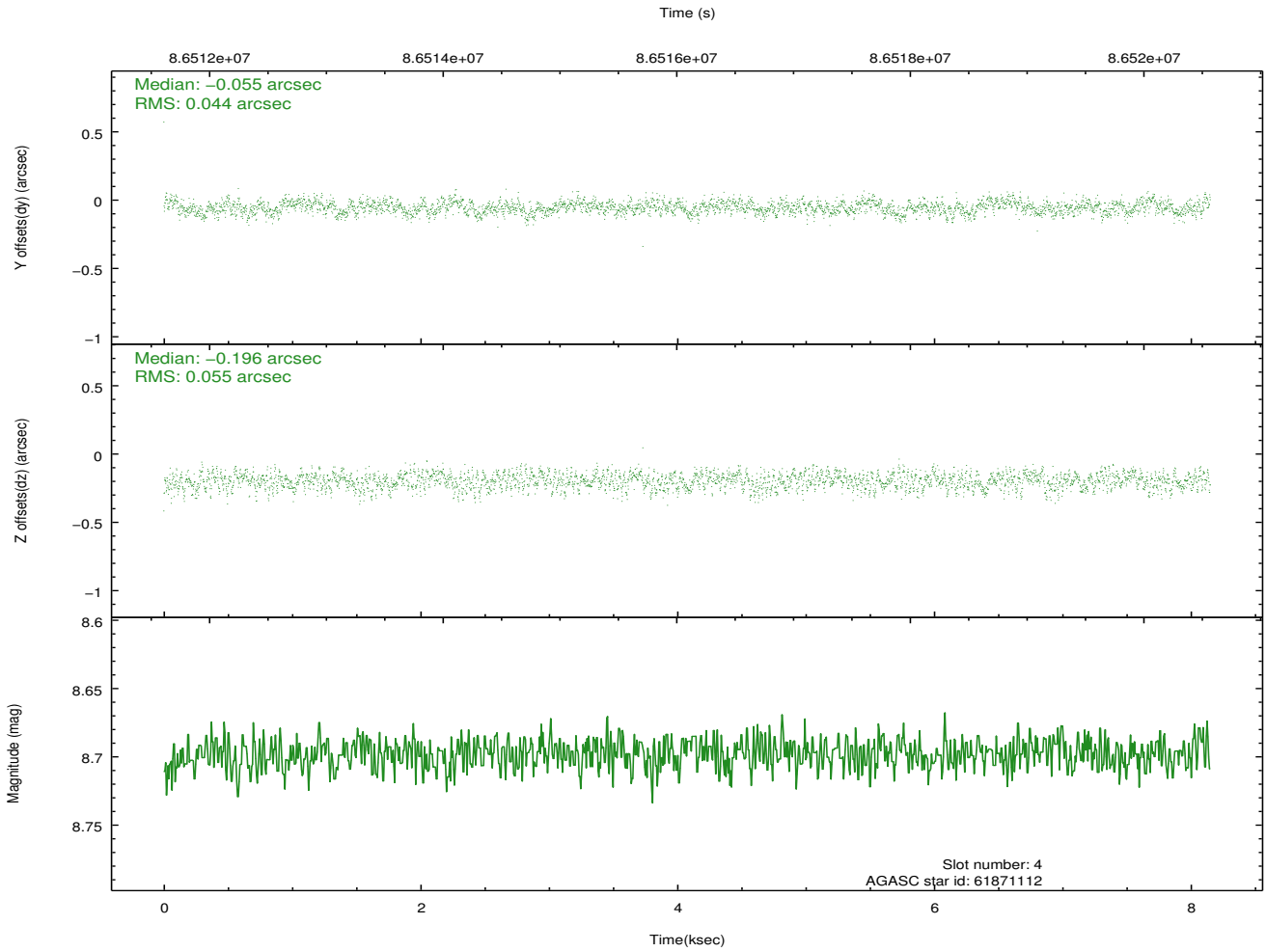
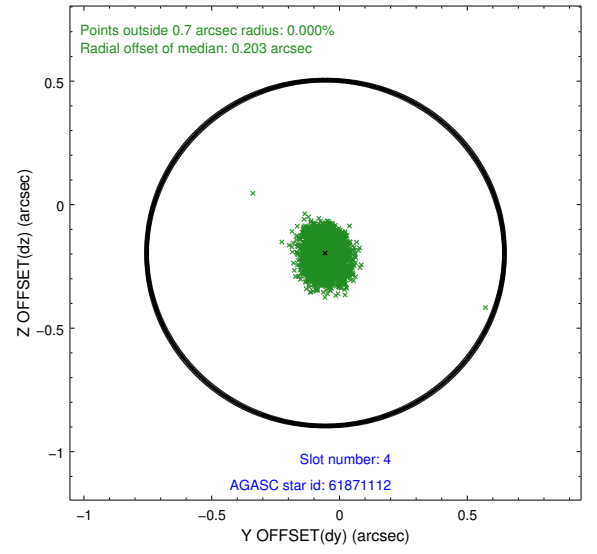
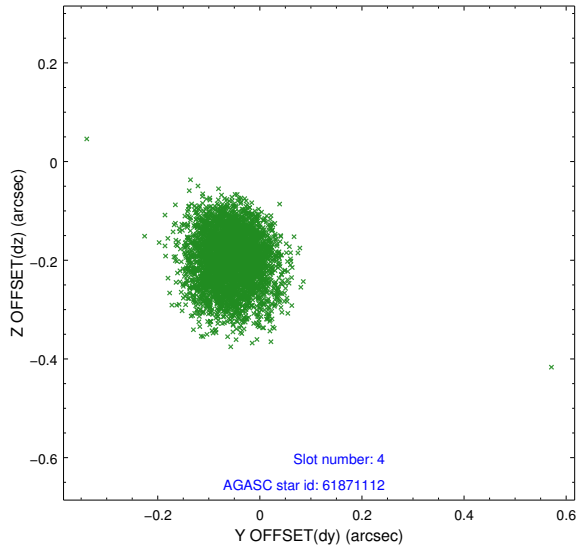
| slot | status | id | mag | n_pts | med_dy | med_dz | dr1 | dr2 | ra | dec | mean_y | mean_z |
|------|--------|----------|------|-------|--------|--------|-------|-------|------------|----------|----------|----------|
| 0 | FID | HRC-S-1 | 7.00 | 1988 | 0.094 | -0.145 | 0.009 | 0.014 | 0.000000 | 0.000000 | -1156.75 | -454.65 |
| 1 | FID | HRC-S-3 | 7.02 | 1988 | 0.153 | -0.067 | 0.010 | 0.017 | 0.000000 | 0.000000 | -1160.04 | 574.73 |
| 2 | FID | HRC-S-4 | 6.96 | 1988 | 0.142 | -0.085 | 0.005 | 0.010 | 0.000000 | 0.000000 | 1240.93 | 577.90 |
| 3 | GUIDE | 61880440 | 7.45 | 3977 | -0.001 | -0.128 | 0.082 | 0.144 | 290.081203 | 4.777895 | 610.55 | -2445.66 |
| 4 | GUIDE | 61871112 | 8.70 | 3974 | -0.055 | -0.196 | 0.074 | 0.119 | 290.340849 | 5.123147 | -592.98 | -1464.69 |
| 5 | GUIDE | 62043480 | 8.89 | 3970 | 0.043 | 0.122 | 0.119 | 0.325 | 291.375882 | 4.831705 | 604.44 | 2202.71 |
| 6 | GUIDE | 62003248 | 9.09 | 3977 | 0.108 | 0.173 | 0.090 | 0.148 | 291.268960 | 4.592557 | 1449.96 | 1786.39 |
| 7 | GUIDE | 62021832 | 9.25 | 3976 | -0.095 | 0.048 | 0.082 | 0.137 | 290.889874 | 5.387344 | -1463.28 | 541.79 |

2.4 Star Slots

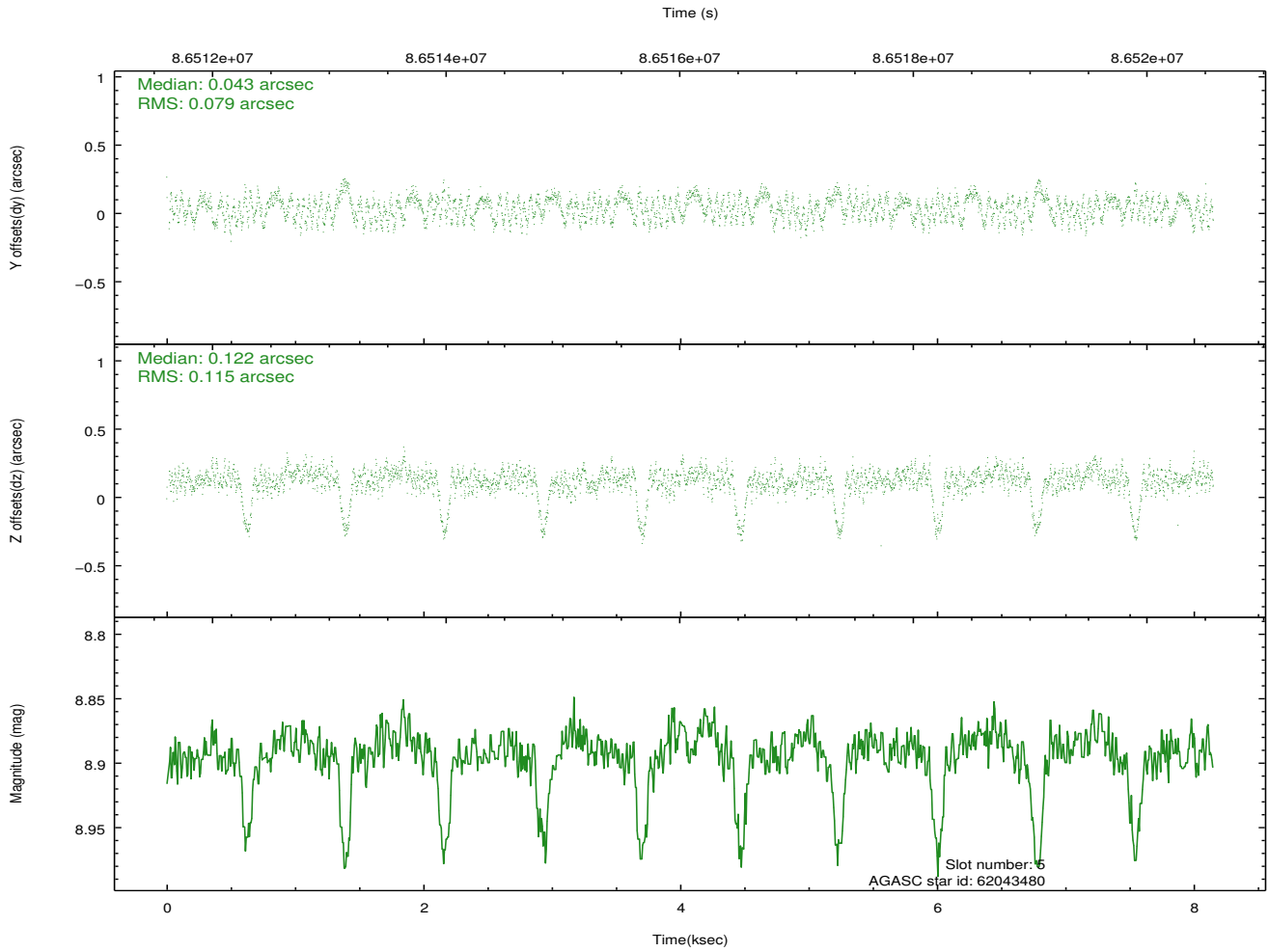
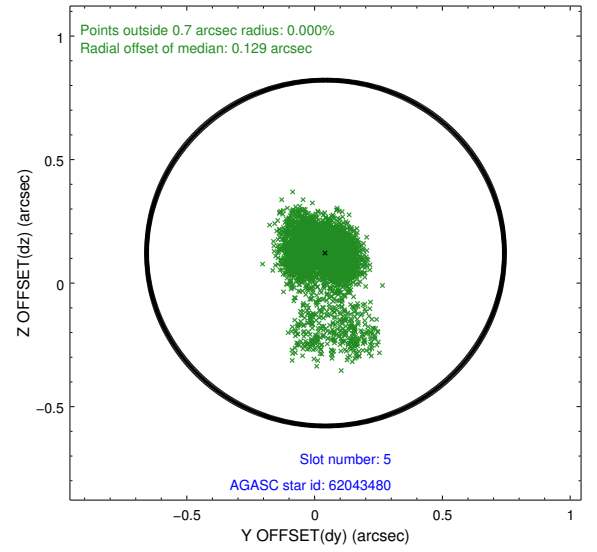
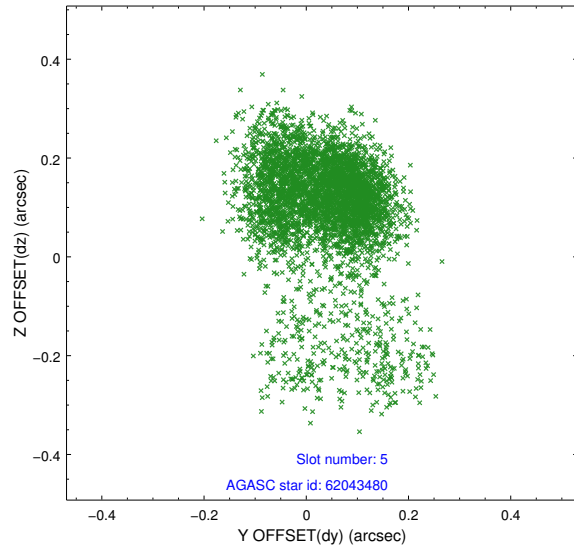
2.4.1 Slot 3



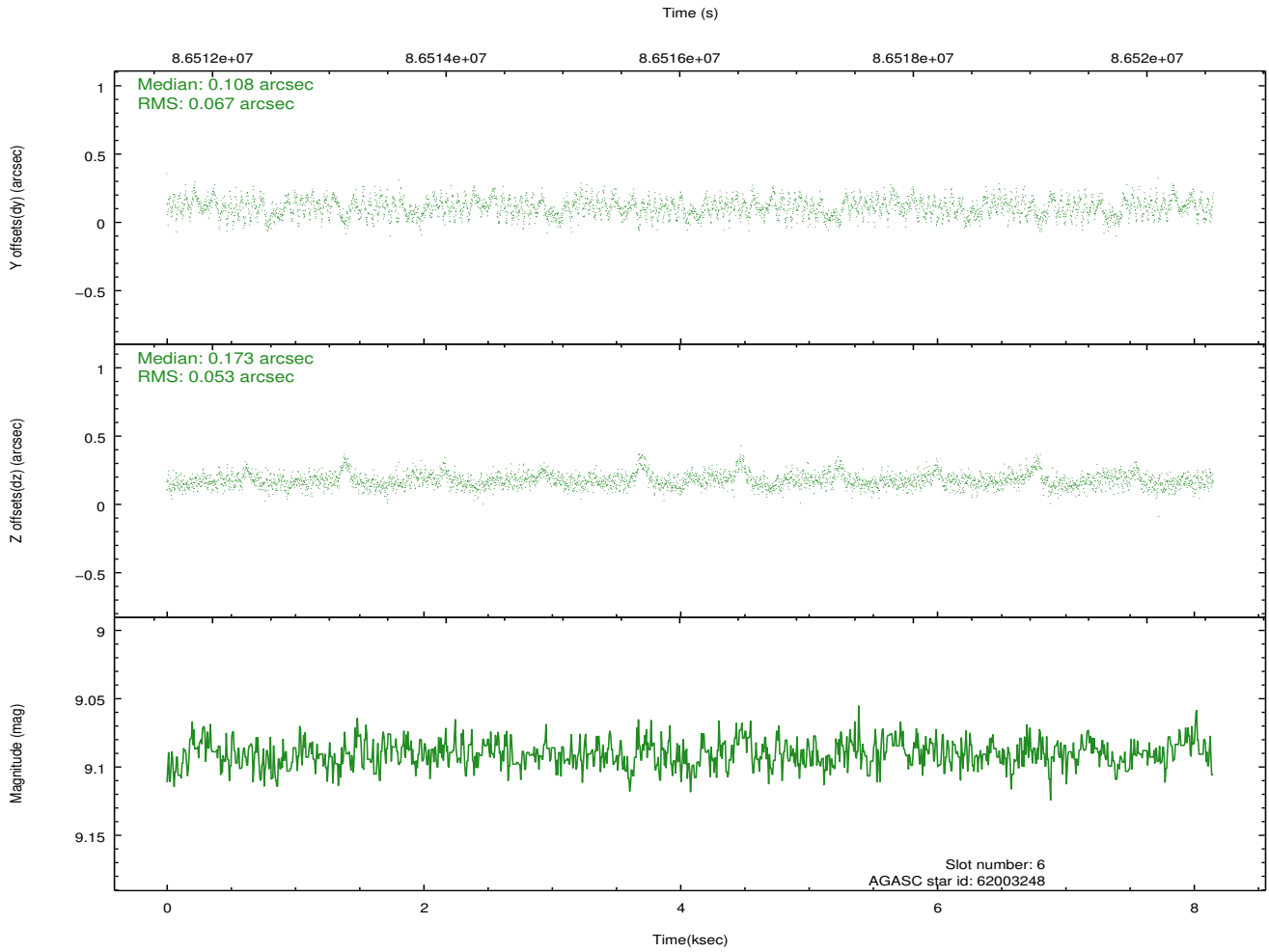
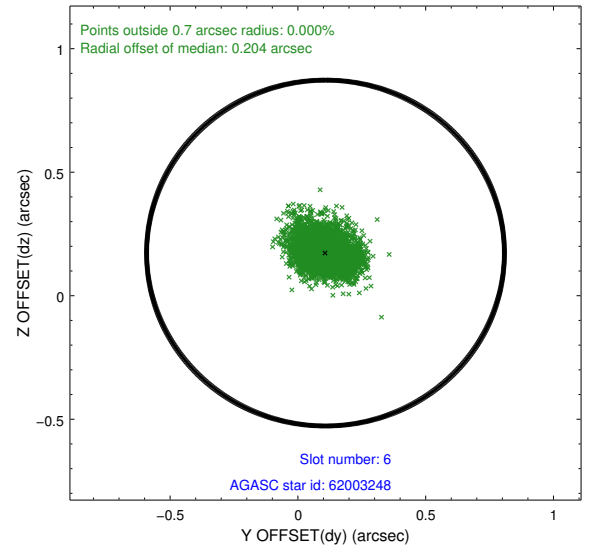
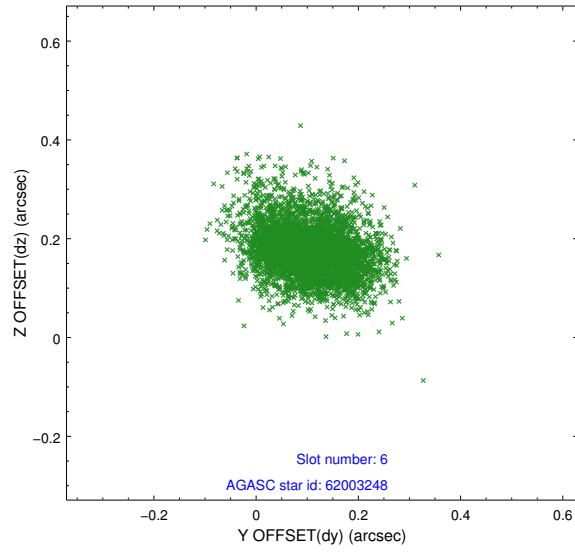
2.4.2 Slot 4



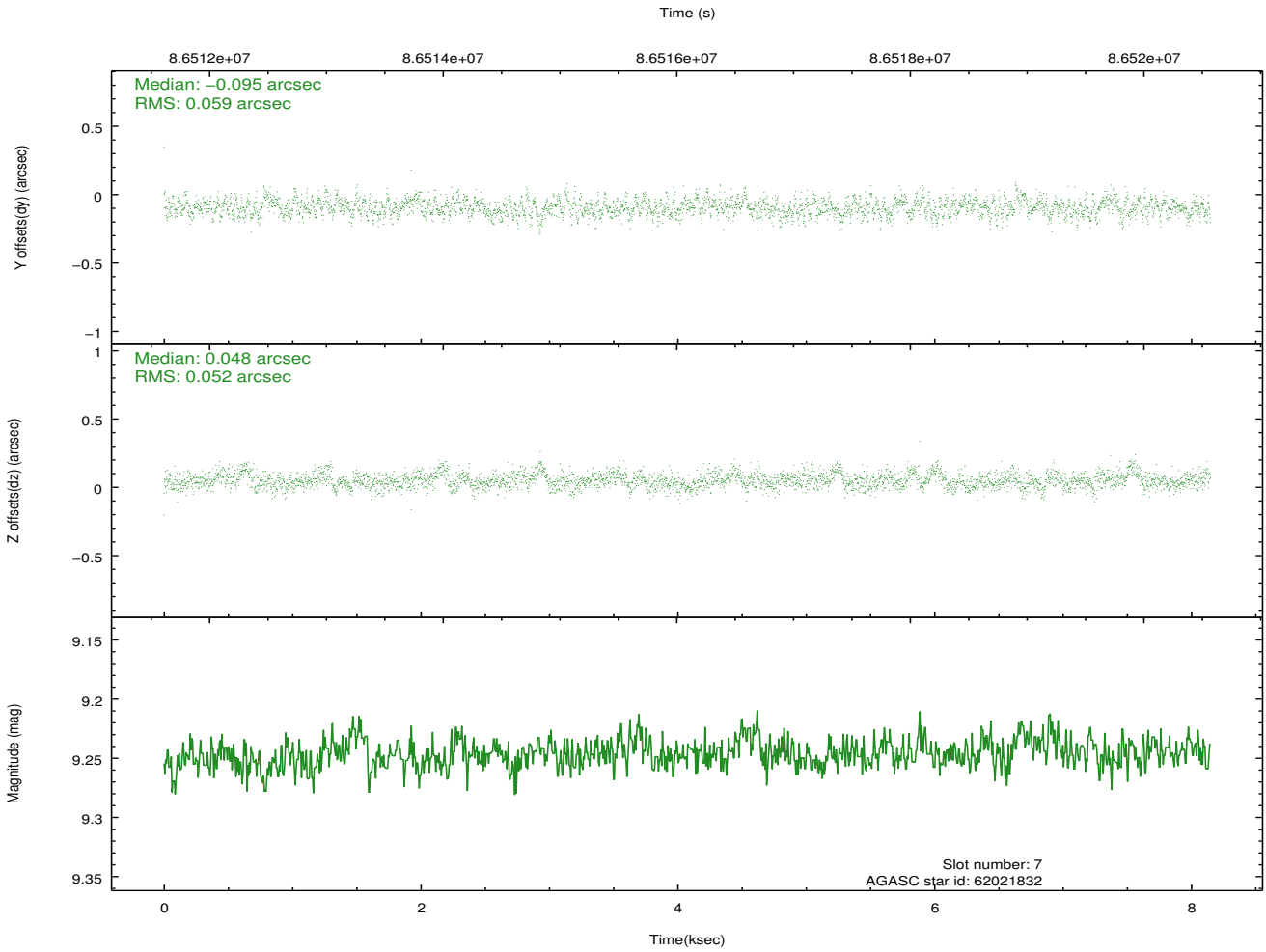
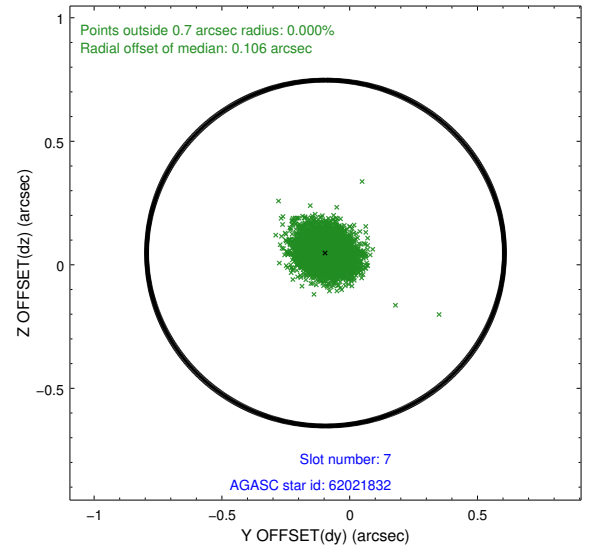
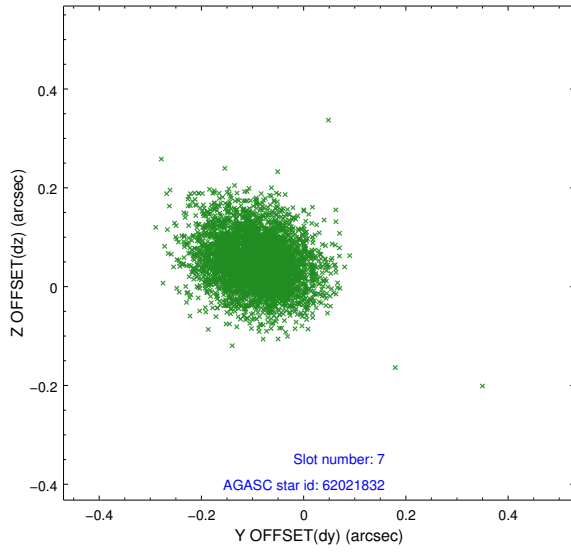
2.4.3 Slot 5



2.4.4 Slot 6

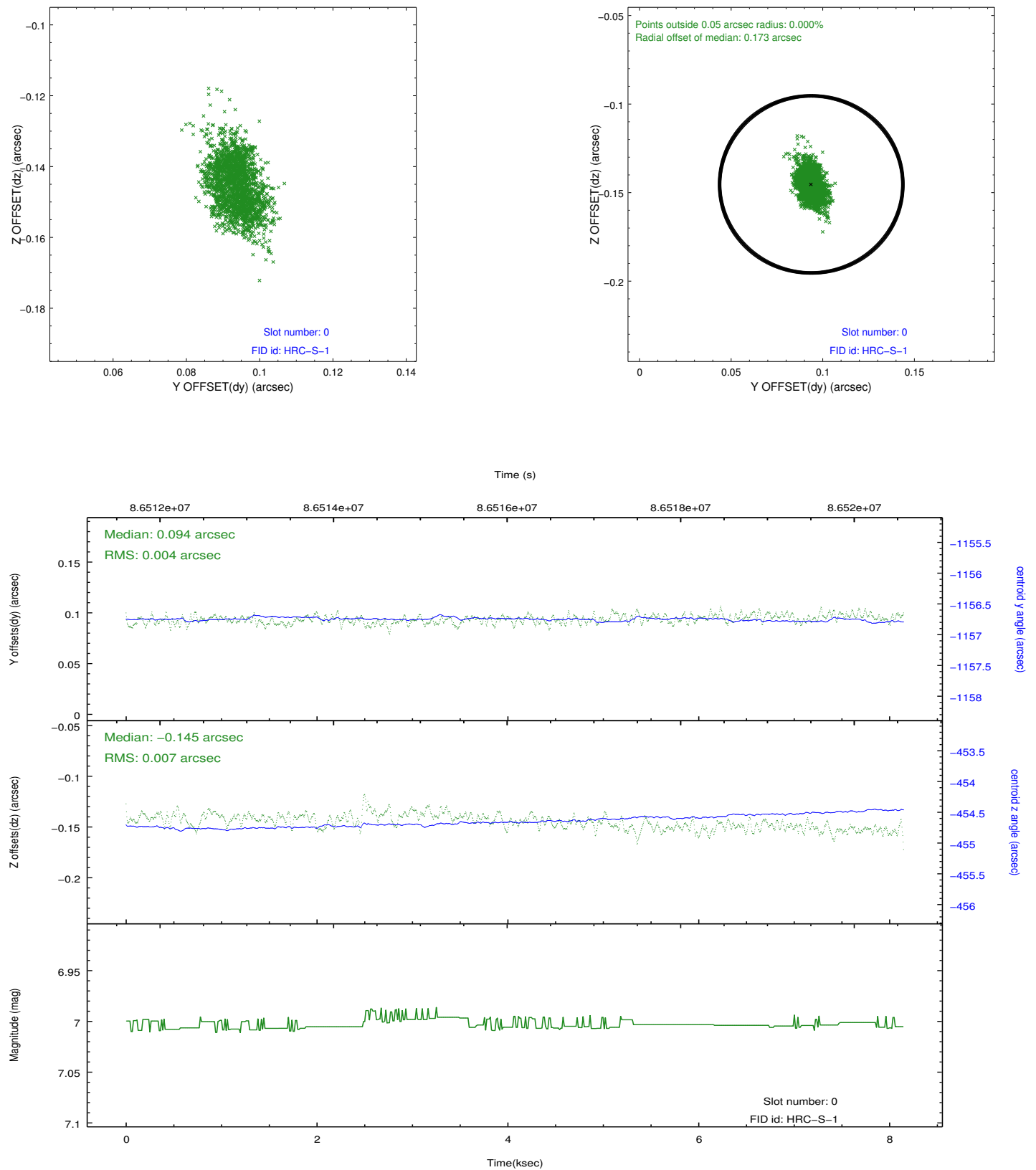


2.4.5 Slot 7

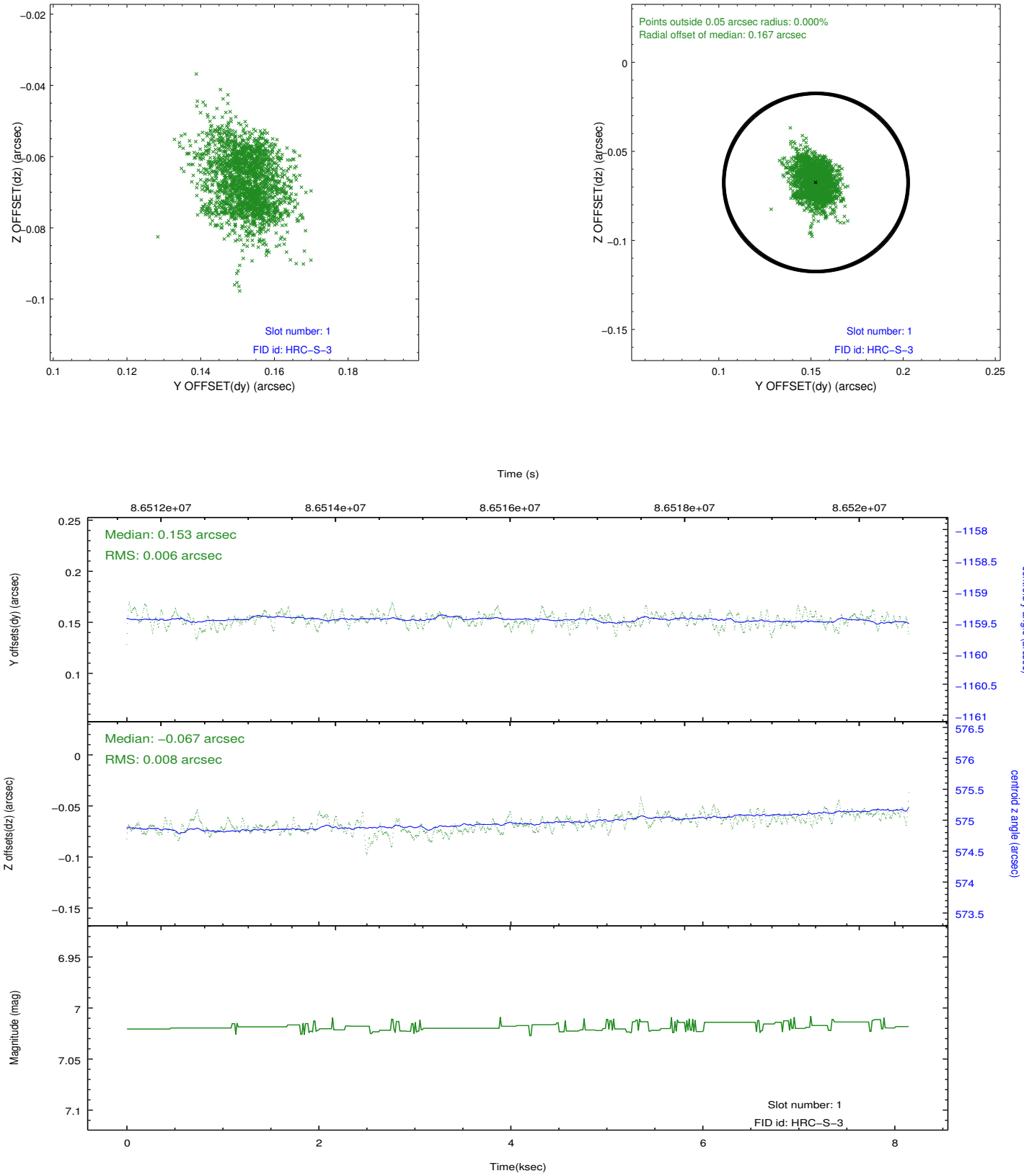


2.5 FID Slots

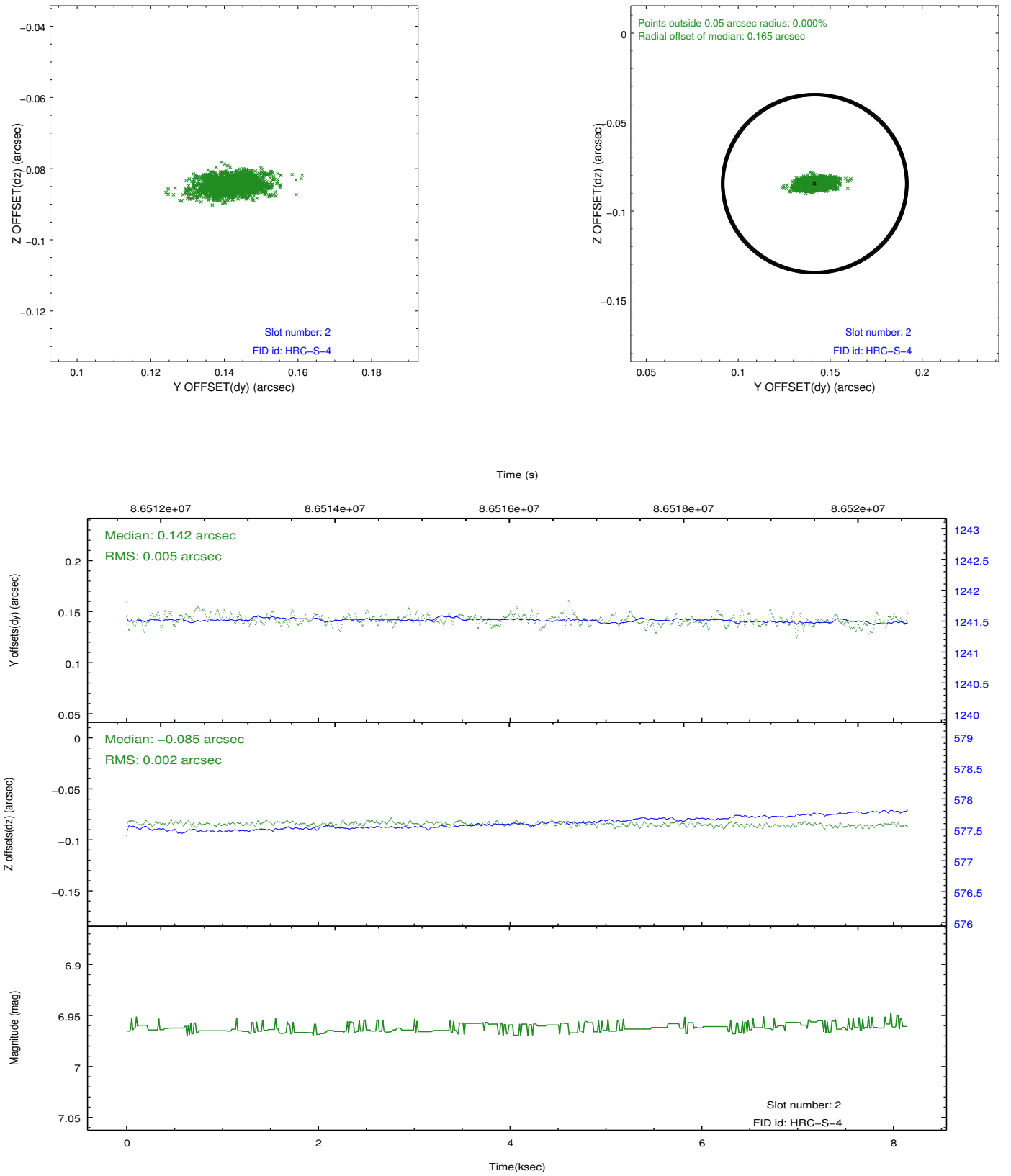
2.5.1 Slot 0



2.5.2 Slot 1

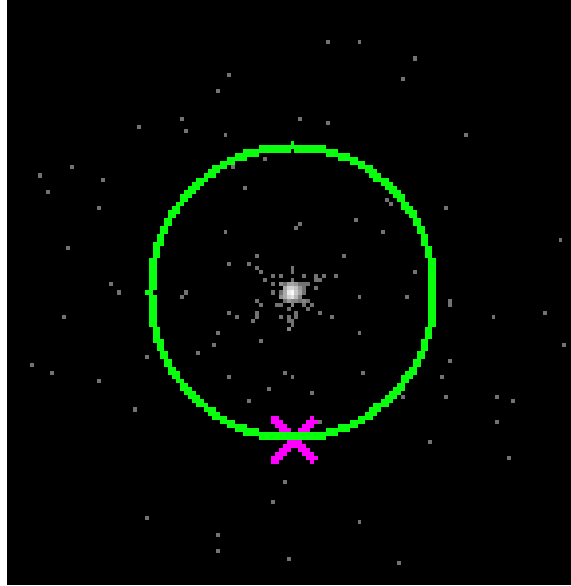


2.5.3 Slot 2

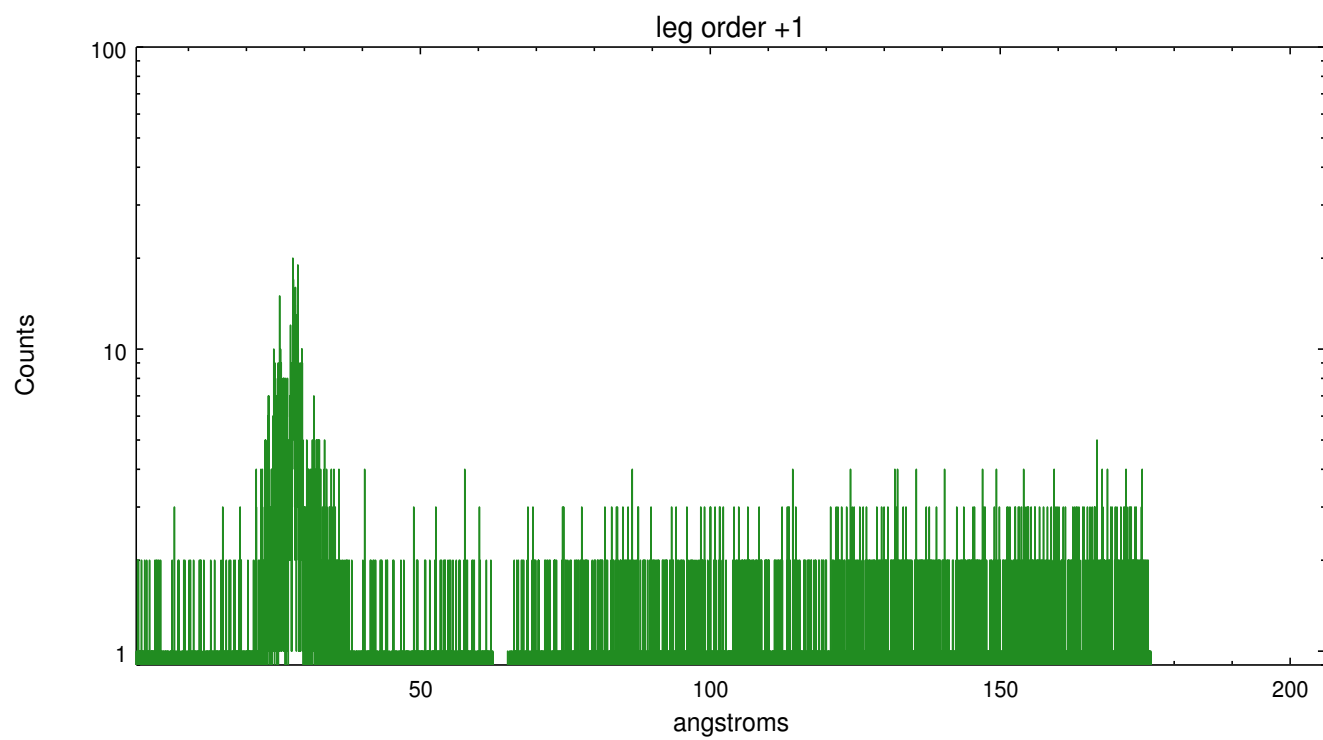
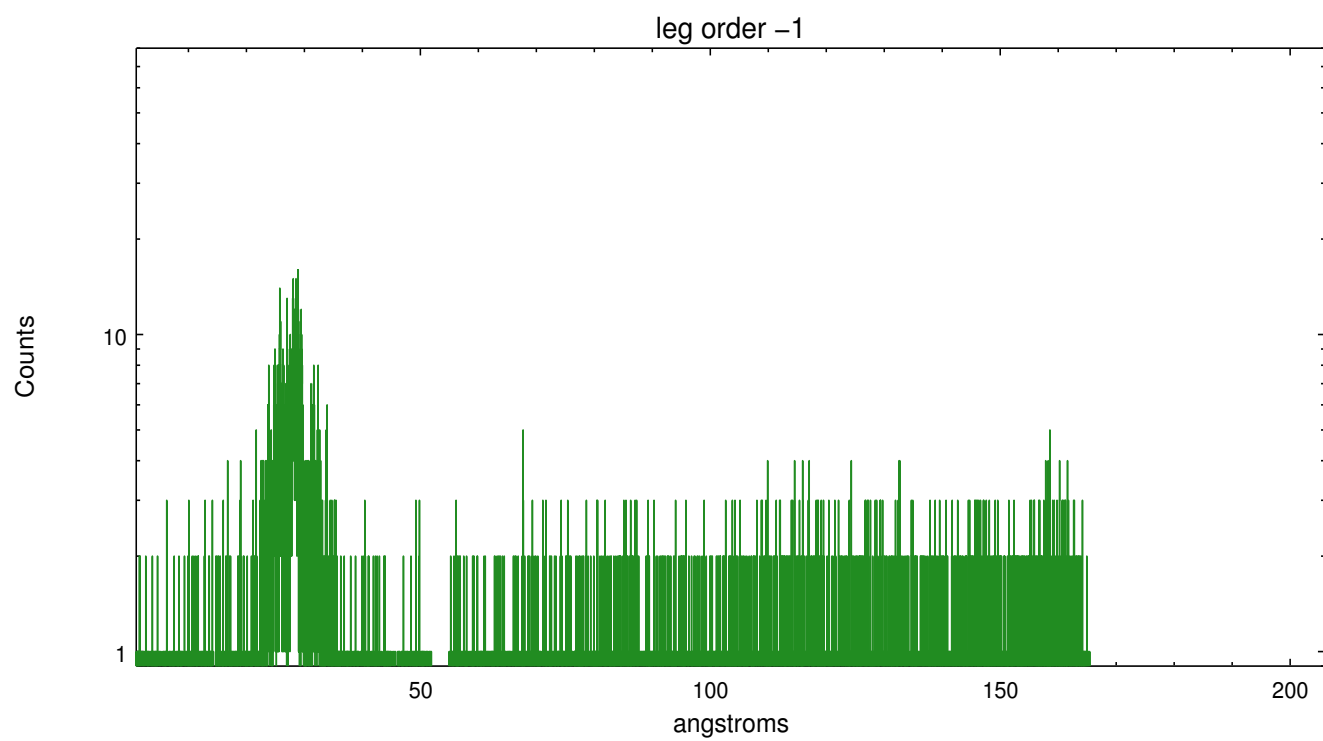


3 Gratings

3.1 LETG Arm



LETG Zero Order



A Summary

A.1 Status

| | |
|----------------------------|-------------|
| V&V Scientist | Joy Nichols |
| V&V Date (YYYY-MM-DD) | 2012.09.12 |
| V&V Edition | 1 |
| V&V Disposition and Status | OK |
| V&V Charge Time | 8.145 |

A.2 Comments