

V&V Reference Report

L2 ASCDS Version : 8.4.5

Observation 623 - L2 Version 4
Chandra X-Ray Center

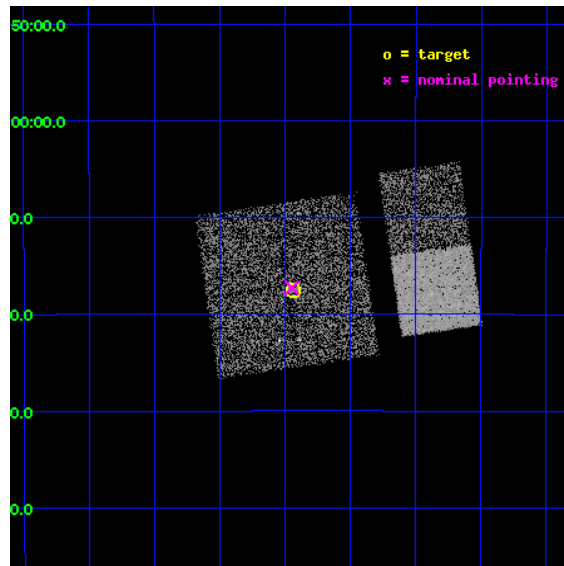
L2 Processing Date : Aug 22 2012

Contents

1	Front	2
2	OBI	3
2.1	OBI	3
2.1.1	Images	3
2.1.2	Bias	3
2.1.3	Parameters	4
2.1.4	Events	4
2.2	Compared Parameters	5
2.3	Aspect	6
2.4	Star Slots	9
2.4.1	Slot 3	9
2.4.2	Slot 4	10
2.4.3	Slot 5	11
2.4.4	Slot 6	12
2.5	FID Slots	13
2.5.1	Slot 0	13
2.5.2	Slot 1	14
2.5.3	Slot 2	15
A	Summary	16
A.1	Status	16
A.2	Comments	16

1 Front

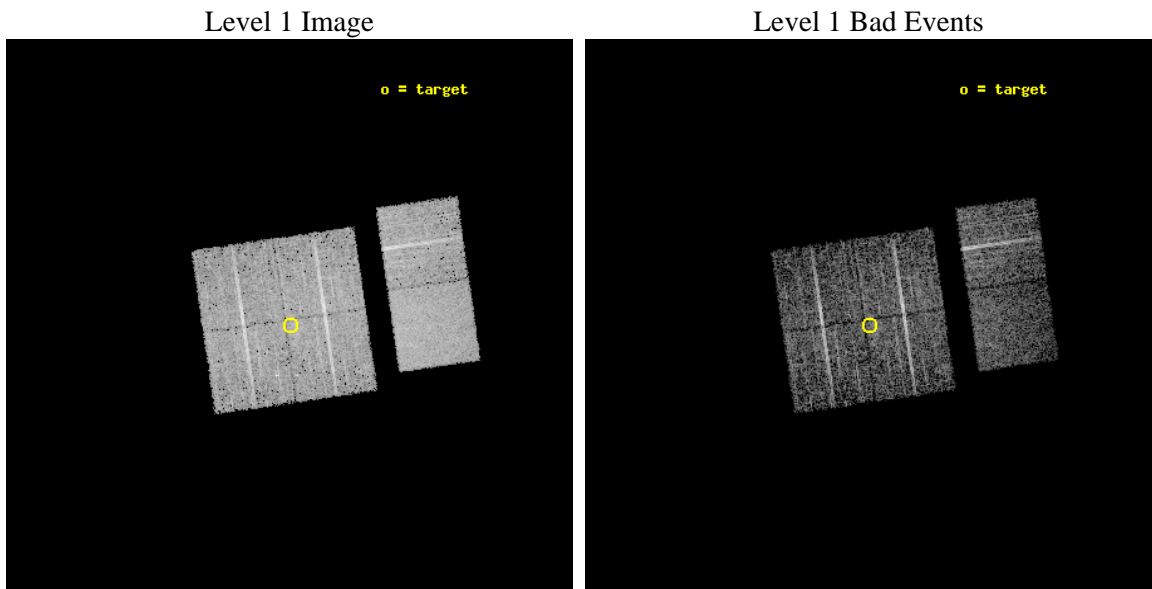
seq_num	200048	Sequence number
obs_id	623	Observation id
title	X-RAYS FROM THE RHO OPHIUCHI YOUNG STAR CLUSTER	Proposal title
observer	Dr. Thierry Montmerle	Principal investigator
object	OPHIUCHI MOSAIC #11	Source name
dtcycle	0	
cycle	P	events from which exps? Prim/Second/Both
ra_targ	247.109167	Observer's specified target RA [deg]
dec_targ	-24.2925	Observer's specified target Dec [deg]
ra_nom	247.11202720207	Nominal RA [deg]
dec_nom	-24.288009703471	Nominal Dec [deg]
roll_nom	81.709875104477	Nominal Roll [deg]
revision	4	Processing version of data
ontime	4041.600003764	Sum of GTIs [s]
livetime	3990.422830957	Livetime [s]
ontime0	4041.600003764	Sum of GTIs [s]
ontime1	4038.359043546	Sum of GTIs [s]
ontime2	4041.600003764	Sum of GTIs [s]
ontime3	4041.600003764	Sum of GTIs [s]
ontime6	4041.600003764	Sum of GTIs [s]
ontime7	4041.600003764	Sum of GTIs [s]
l2events	29267	Number of level 2 events



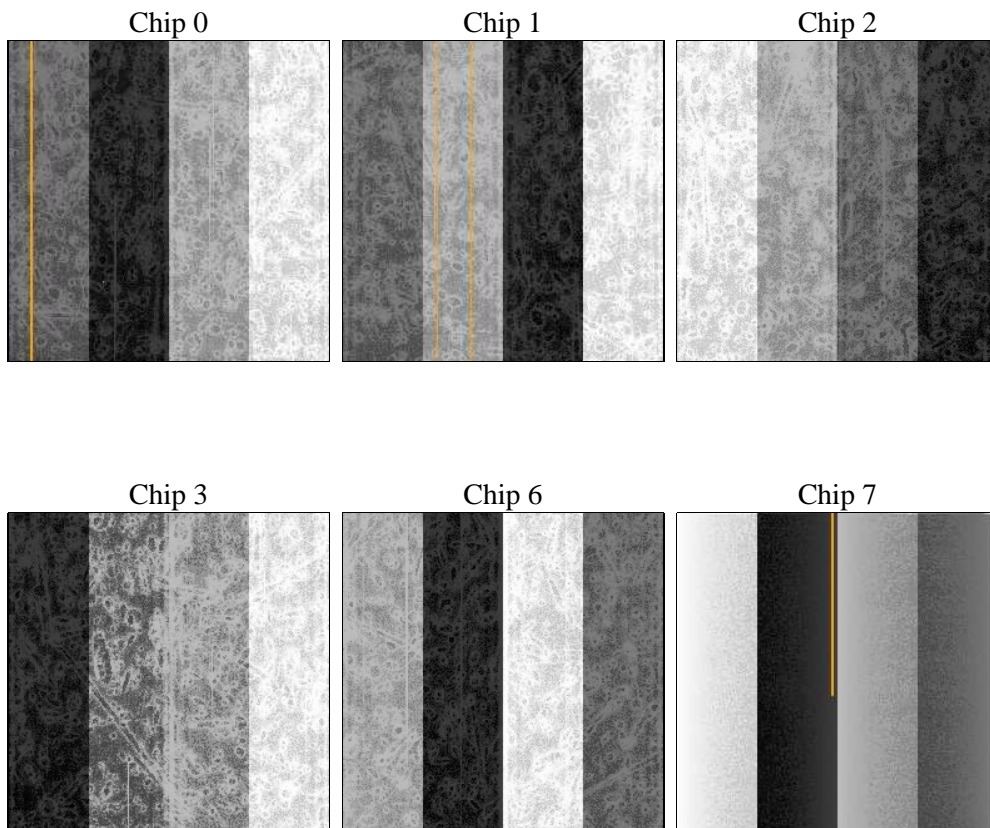
2 OBI

2.1 OBI

2.1.1 Images



2.1.2 Bias



2.1.3 Parameters

obi_num	0	Obi number	sched_exp_time	5000.000000	[s] Scheduled observation exposure time
ascdsver	8.4.5	Processing system revision	ontime	4041.600003764	Sum of GTIs [s]
caldsver	4.5.1.1	 	ontime0	4041.600003764	Sum of GTIs [s]
date	2012-08-22T12:50:32	Date and time of file creation	ontime1	4038.359043546	Sum of GTIs [s]
revision	4	Processing version of data	ontime2	4041.600003764	Sum of GTIs [s]
			ontime3	4041.600003764	Sum of GTIs [s]
			ontime6	4041.600003764	Sum of GTIs [s]
			ontime7	4041.600003764	Sum of GTIs [s]
			l1events	193678	Number of level 1 events

2.1.4 Events

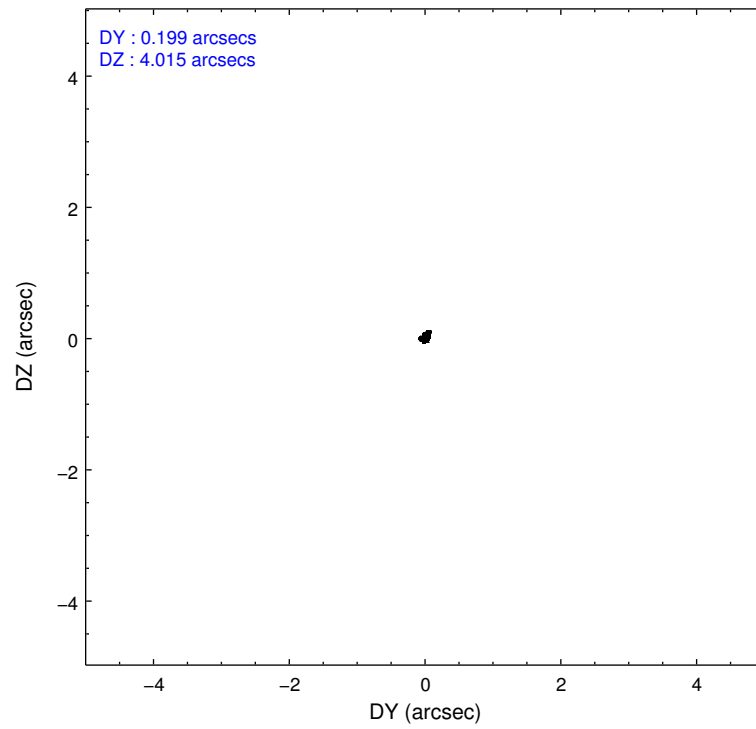
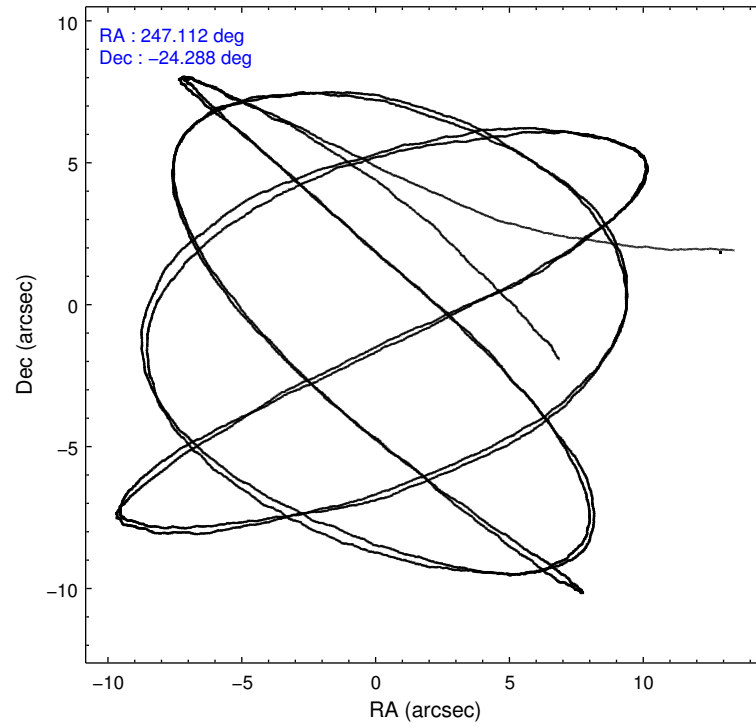
	ccd 0	ccd 1	ccd 2	ccd 3	ccd 6	ccd 7		ccd 0	ccd 1	ccd 2	ccd 3	ccd 6	ccd 7
level 1 events	28806	30344	32925	31097	33588	36918	grade 0 events	1435	1598	1286	1461	1364	1519
rejected events	25457	26613	29781	27813	30325	21389		4%	5%	3%	4%	4%	4%
rejected %	88%	87%	90%	89%	90%	57%	grade 1 events	8	23	17	19	8	36
								0%	0%	0%	0%	0%	0%
							grade 2 events	686	707	649	576	646	3048
								2%	2%	1%	1%	1%	8%
							grade 3 events	367	405	313	344	335	1443
								1%	1%	0%	1%	0%	3%
							grade 4 events	338	370	334	346	334	1418
								1%	1%	1%	1%	0%	3%
							grade 5 events	1022	1049	906	1053	1171	3451
								3%	3%	2%	3%	3%	9%
							grade 6 events	535	660	570	566	589	8115
								1%	2%	1%	1%	1%	21%
							grade 7 events	24415	25532	28850	26732	29141	17888
								84%	84%	87%	85%	86%	48%

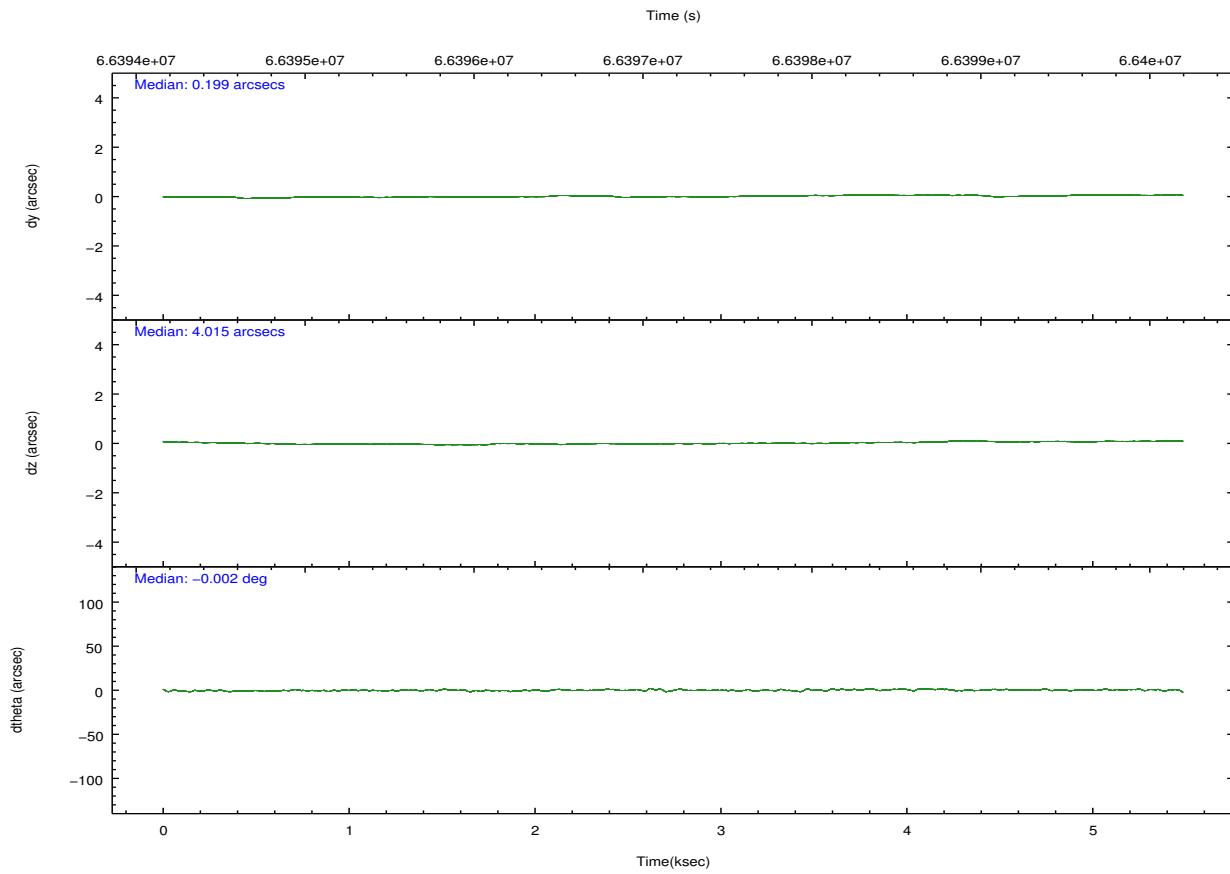
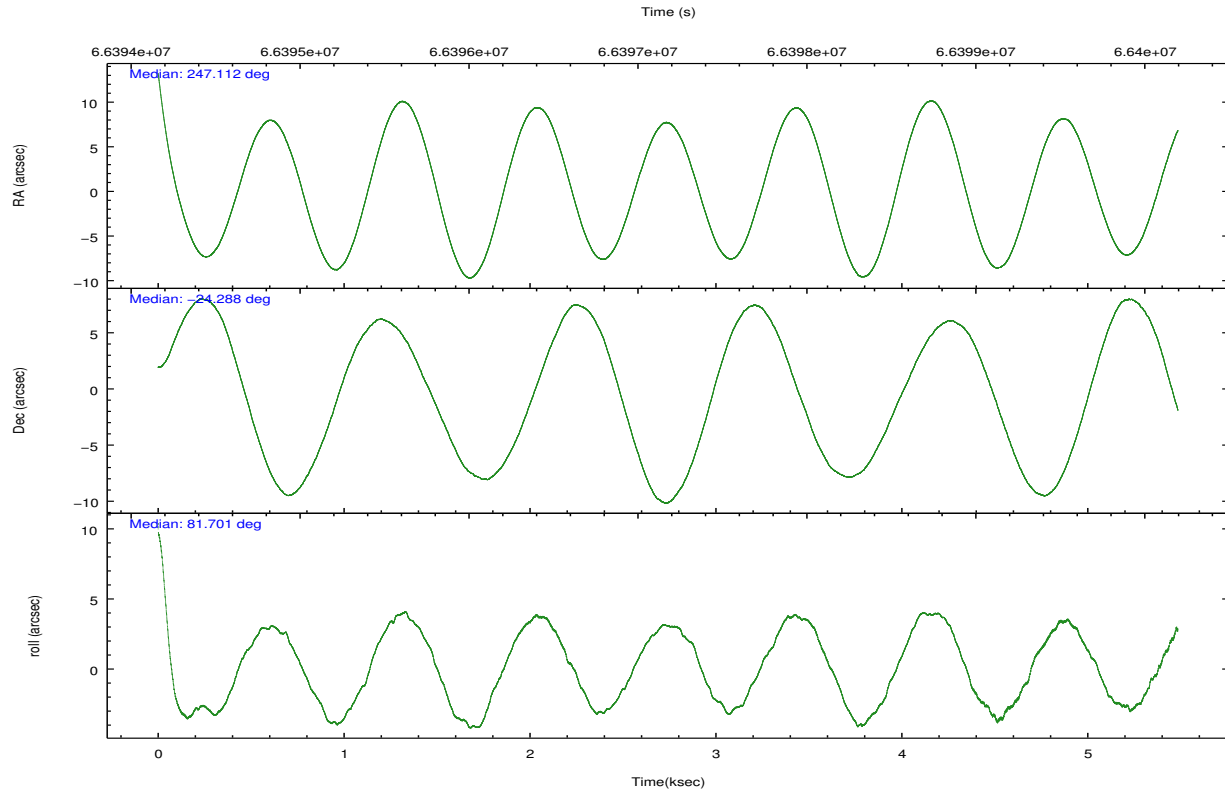
2.2 Compared Parameters

Parameter	Planned	Actual
Instrument	ACIS	ACIS
Detector	ACIS-012367	ACIS-012367
Grating	NONE	NONE
Data mode	FAINT	FAINT
Observation mode	POINTING	POINTING
[deg] Pointing RA	247.123037	247.1120272020727
[deg] Pointing Dec	-24.313940	-24.2880097034713
[deg] Pointing Roll	81.505708	81.70987510447735
[s] Window start time (MET)	63072064.184000	63072064.184000
[s] Window stop time (MET)	84153664.184000	84153664.184000
[mm] SIM focus pos	-0.782348	-0.7809083437167272
[mm] SIM defocus	0	0.001439871863259334
[mm] SIM translation stage pos	-233.592463	-233.5874344608287
[mm] SIM translation stage offset	0	-0.005018542100998502
[s] Observation start time (MET)	66394922.184000	66393675.556101
Observation start date	2000-02-08T11:00:58	2000-02-08T10:41:15
[s] Observation end time (MET)	66399922.184000	66401163.693874
Observation end date	2000-02-08T12:24:18	2000-02-08T12:46:03
Read mode	TIMED	TIMED

Parameter	Planned	Actual
Obspar format version number	7	7
Obspar file type	PREDICTED	ACTUAL
Obspar update status	NONE	UPDATED
Number of optional ACIS chips dropped	0	0
On-chip summing requested	N	N
Subarray requested	NONE	NONE
Alternating exposures requested	N	N
[s] Primary exposure time	0.000000	3.2

2.3 Aspect



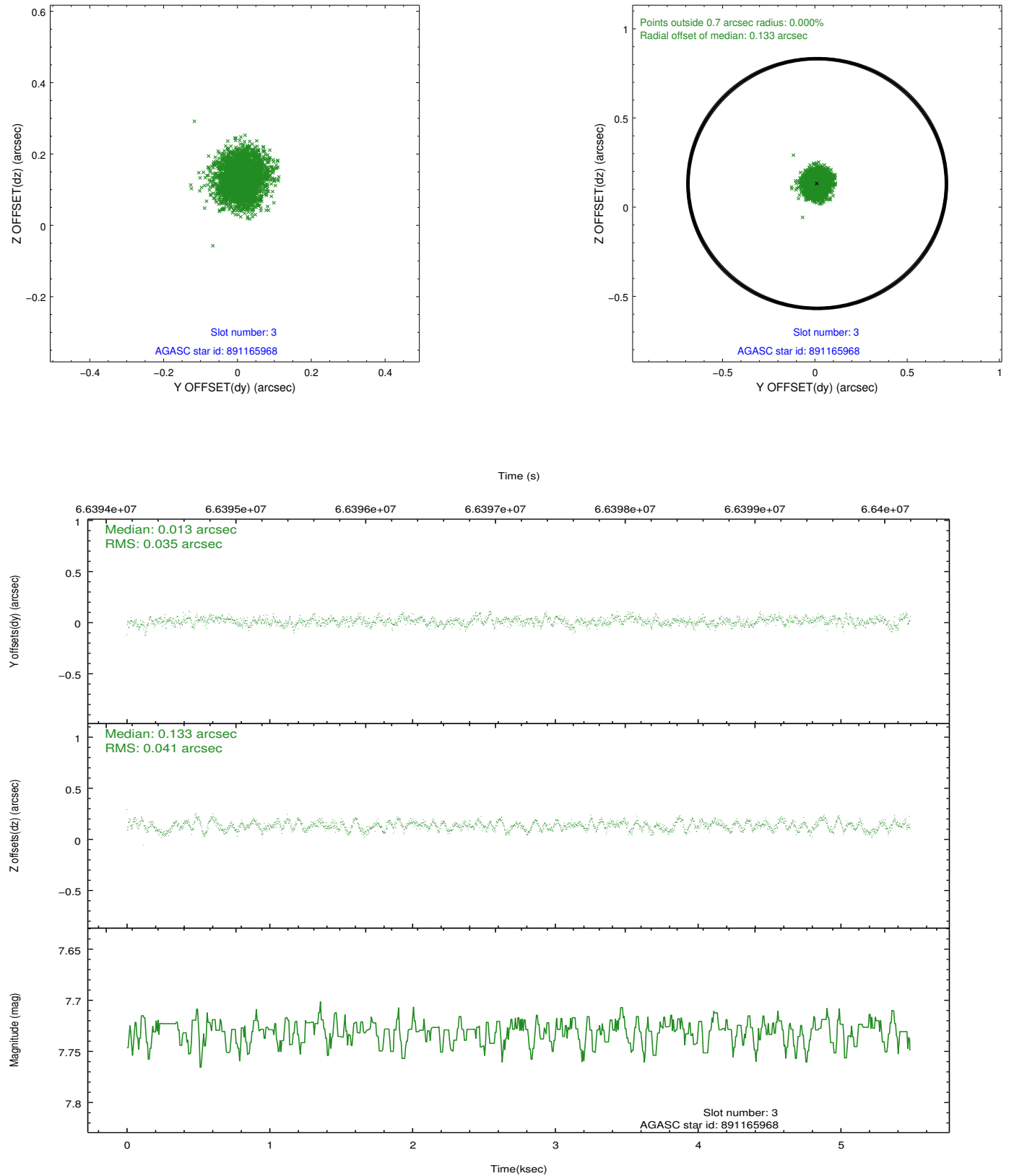


Slot Statistics

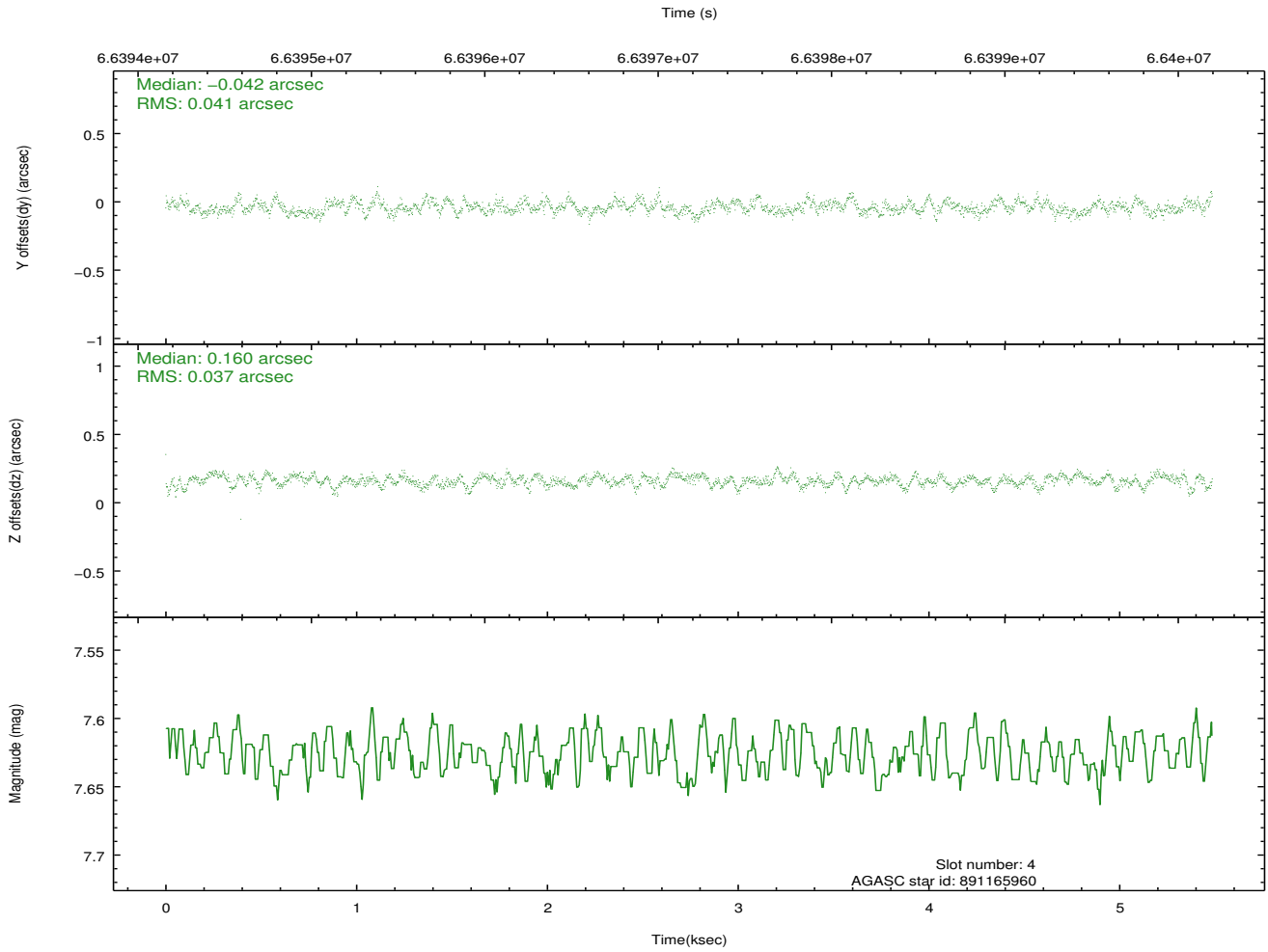
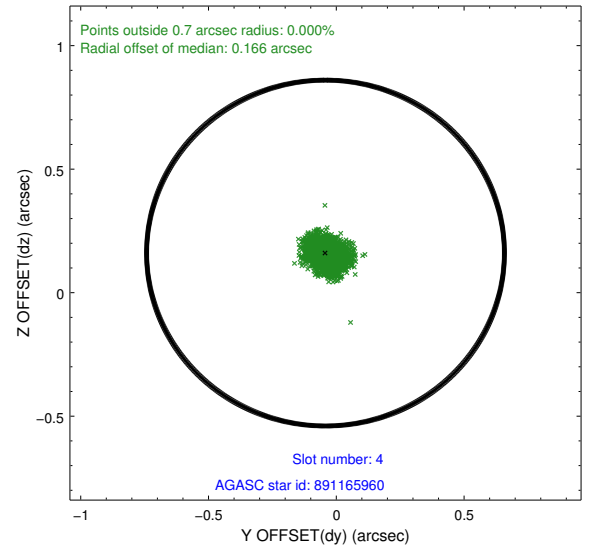
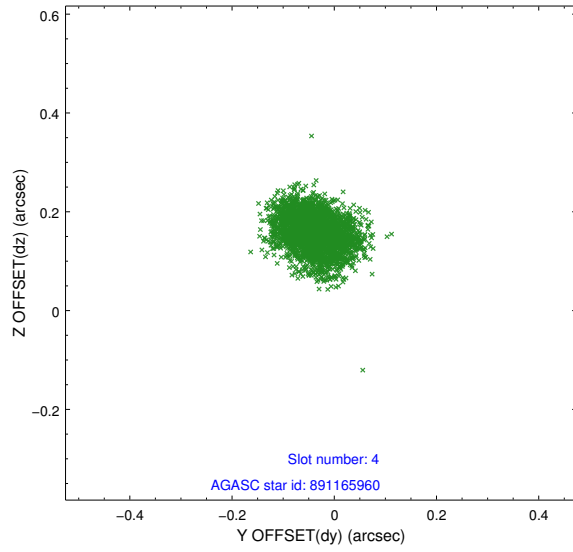
slot	status	id	mag	n_pts	med_dy	med_dz	dr1	dr2	ra	dec	mean_y	mean_z
0	FID	ACIS-I-2	7.15	1338	-0.036	-0.016	0.010	0.018	0.000000	0.000000	-754.55	-833.72
1	FID	ACIS-I-4	7.19	1338	-0.013	0.033	0.009	0.016	0.000000	0.000000	2159.05	1071.94
2	FID	ACIS-I-5	7.23	1338	-0.052	0.052	0.009	0.016	0.000000	0.000000	-1806.97	1071.08
3	GUIDE	891165968	7.73	2677	0.013	0.133	0.058	0.089	247.104842	-24.750274	-1562.94	-173.69
4	GUIDE	891165960	7.63	2677	-0.042	0.160	0.059	0.093	247.245842	-24.537990	-739.68	-517.33
5	GUIDE	891031768	7.59	2677	-0.054	-0.439	0.053	0.090	246.351325	-24.465712	-922.22	2418.08
6	GUIDE	891165976	8.19	2676	0.086	0.148	0.052	0.084	247.477470	-24.979460	-2200.89	-1497.80
7	UNUSED		0.00	0	0.000	0.000	0.000	0.000	0.000000	0.000000	0.00	0.00

2.4 Star Slots

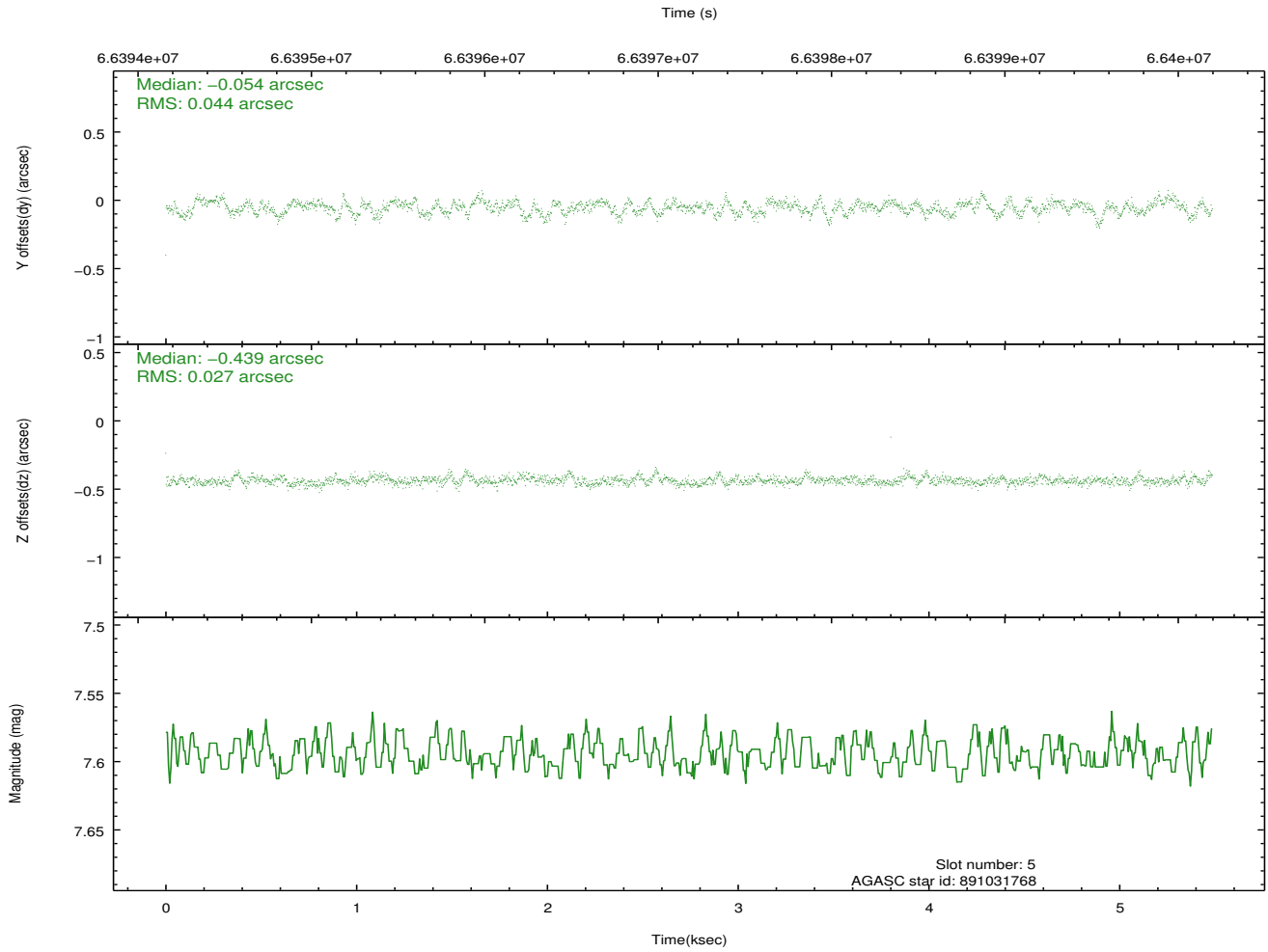
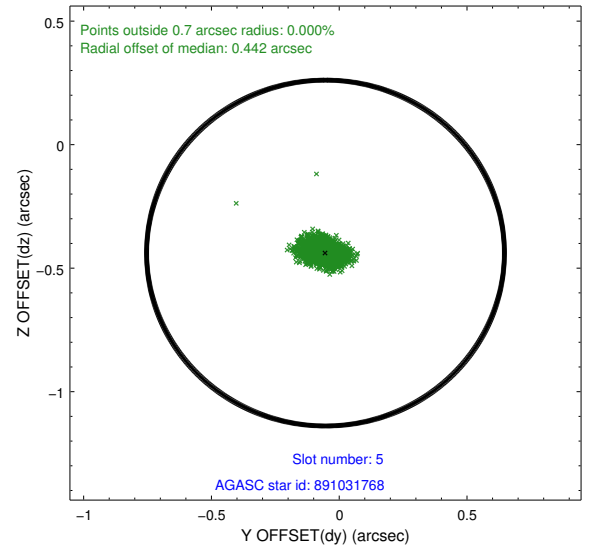
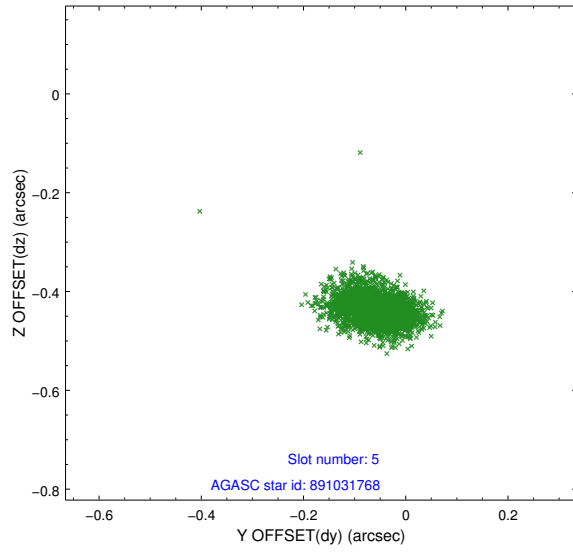
2.4.1 Slot 3



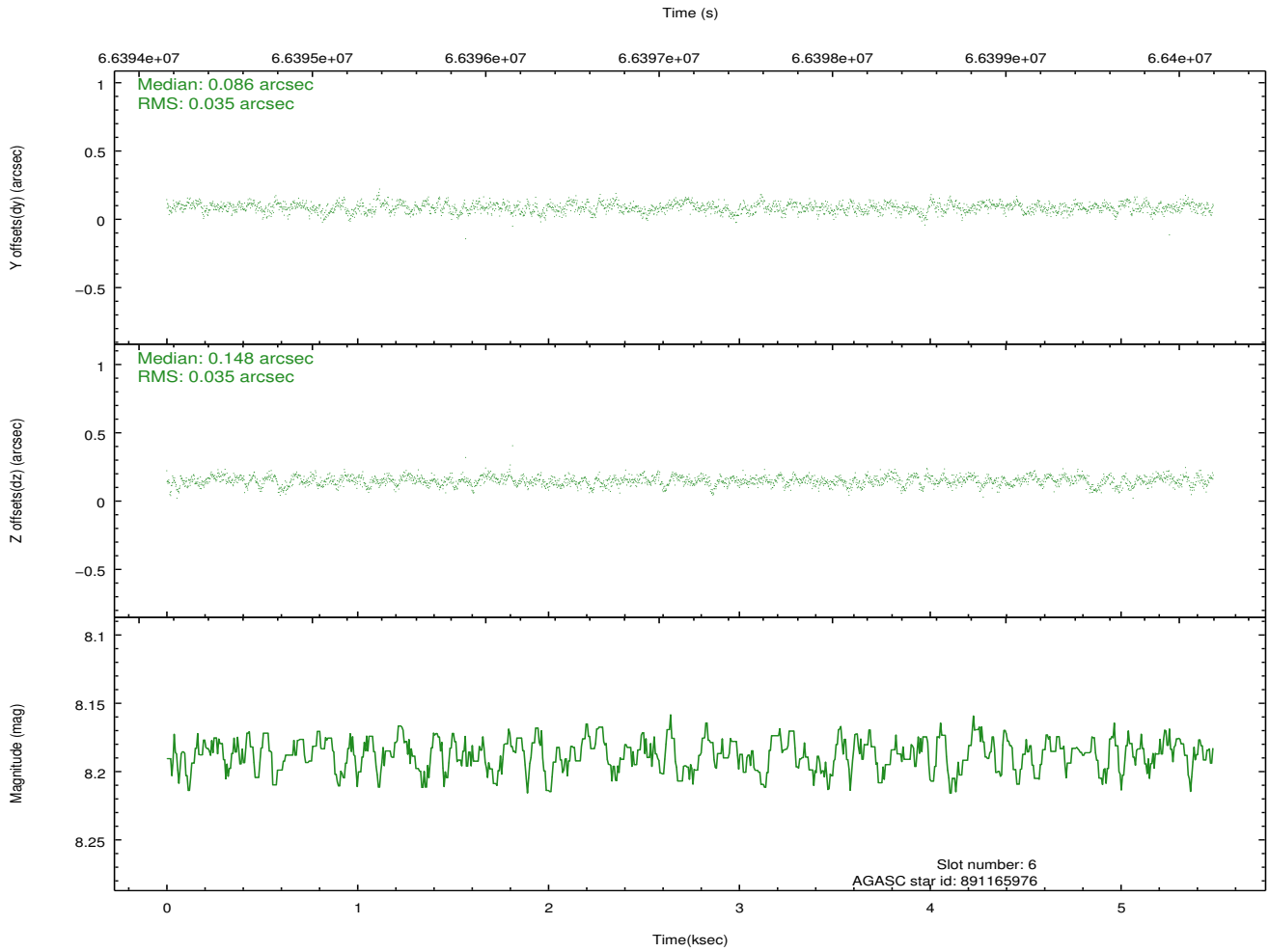
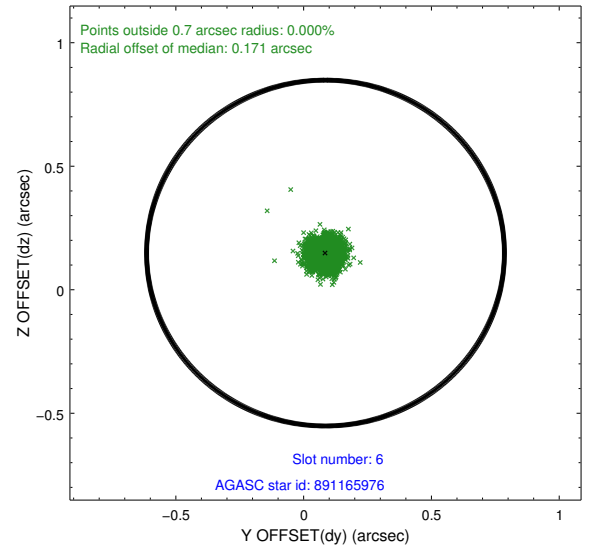
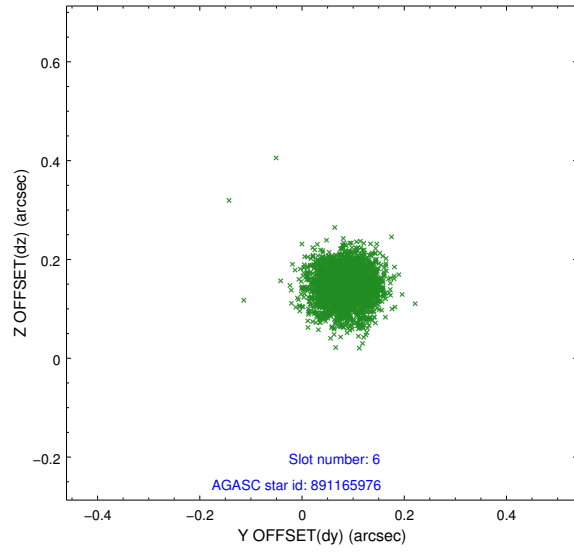
2.4.2 Slot 4



2.4.3 Slot 5

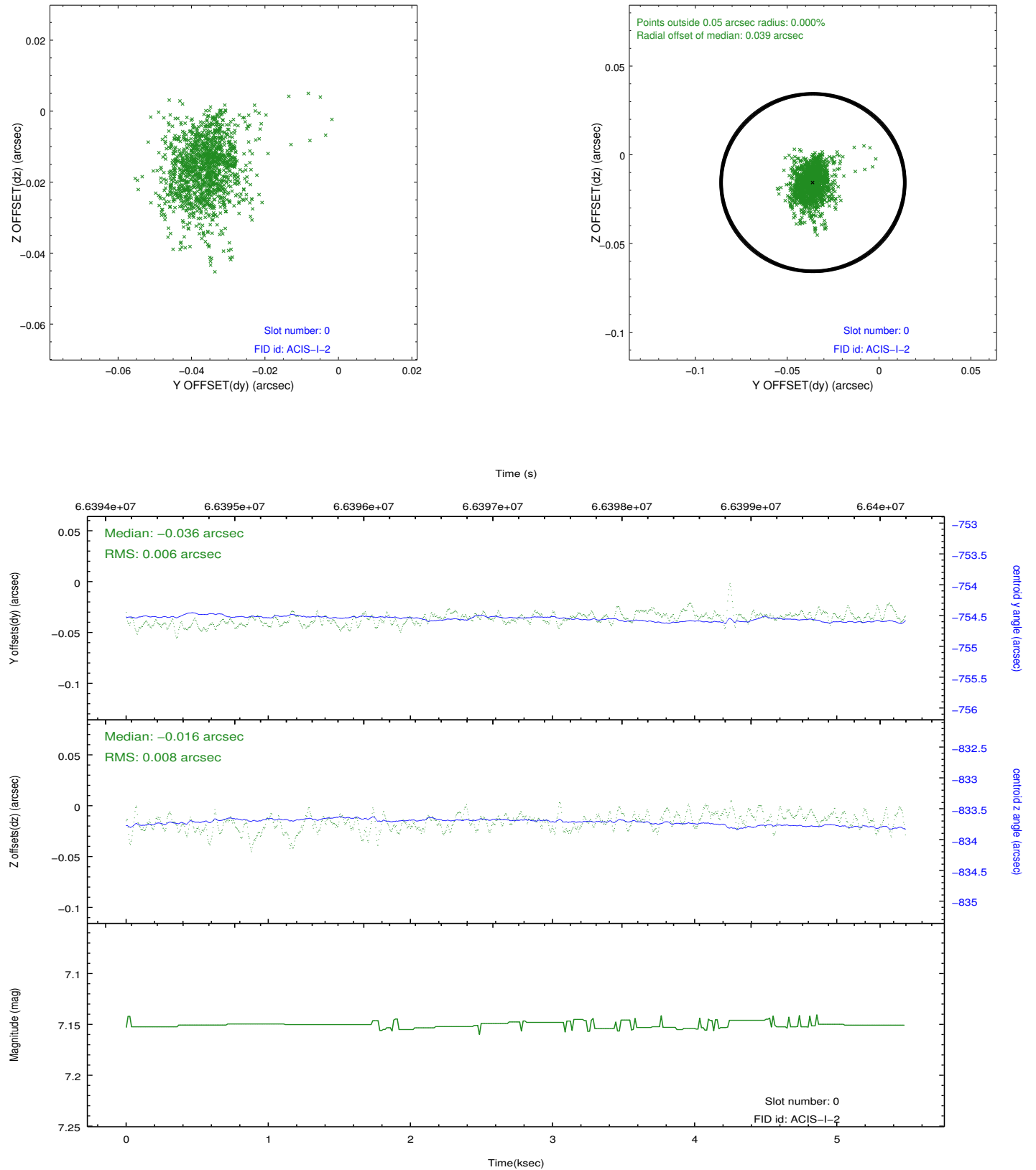


2.4.4 Slot 6

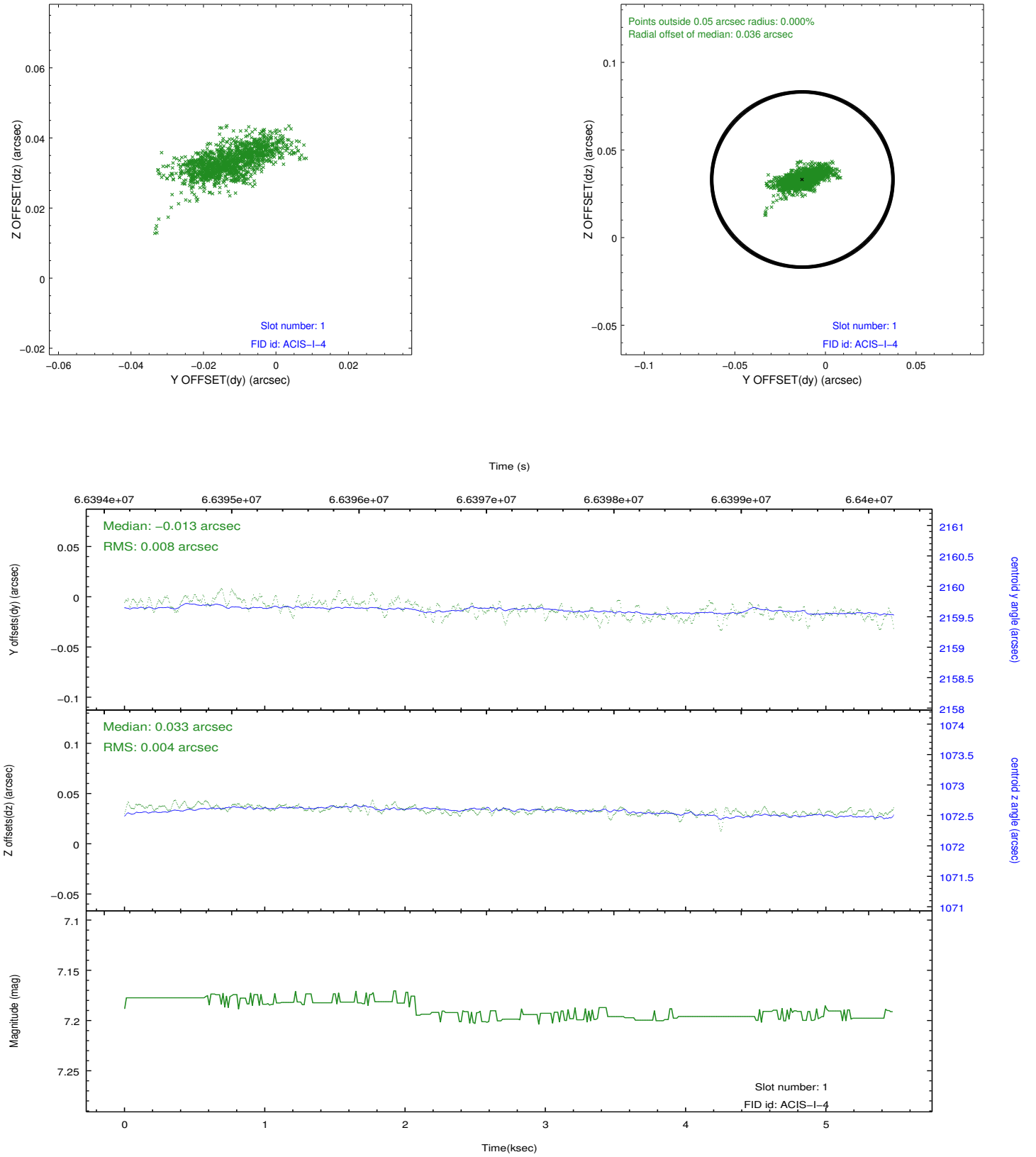


2.5 FID Slots

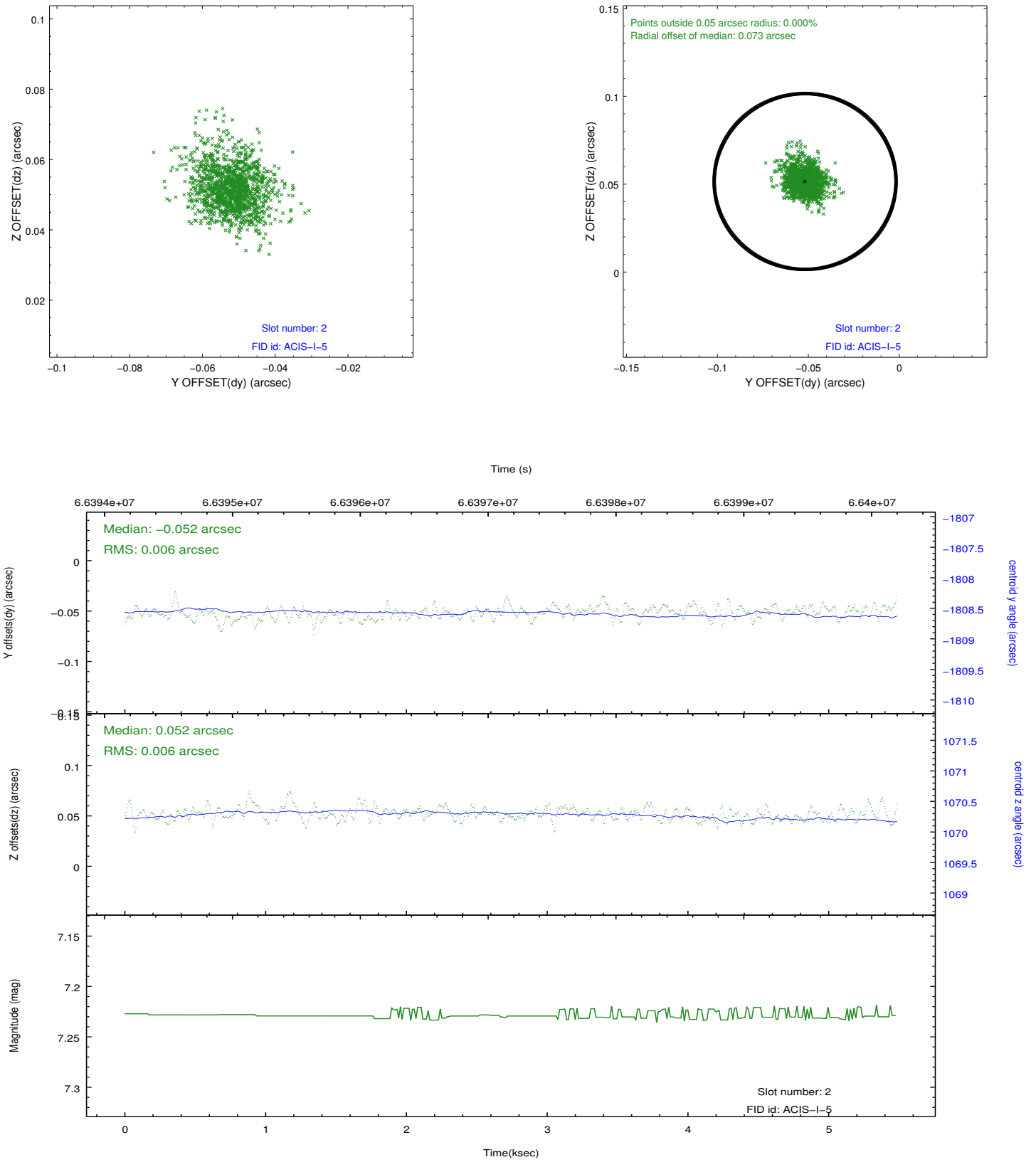
2.5.1 Slot 0



2.5.2 Slot 1



2.5.3 Slot 2



A Summary

A.1 Status

V&V Scientist	Jen Lauer
V&V Date (YYYY-MM-DD)	2012.08.23
V&V Edition	1
V&V Disposition and Status	OK
V&V Charge Time	4.044

A.2 Comments

Slot 7 was not used in this observation. Window constraint met.