

V&V Reference Report

L2 ASCDS Version : 7.6.10

Observation 620 - L2 Version 001
Chandra X-Ray Center

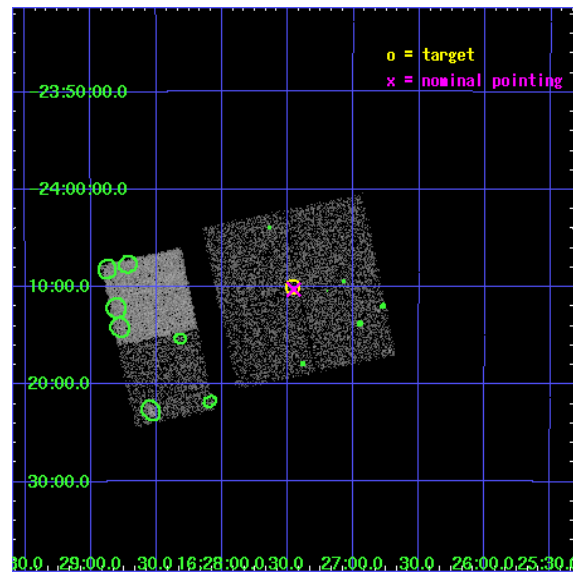
L2 Processing Date : May 27 2007

Contents

1	Front	2
2	OBI	3
2.1	OBI	3
2.1.1	Images	3
2.1.2	Bias	3
2.1.3	Parameters	4
2.1.4	Events	4
2.2	Compared Parameters	5
2.3	Aspect	6
2.4	Star Slots	9
2.4.1	Slot 3	9
2.4.2	Slot 4	10
2.4.3	Slot 5	11
2.4.4	Slot 6	12
2.4.5	Slot 7	13
2.5	FID Slots	14
2.5.1	Slot 0	14
2.5.2	Slot 1	15
2.5.3	Slot 2	16
3	Point Sources	17
A	Summary	18
A.1	Status	18
A.2	Comments	18

1 Front

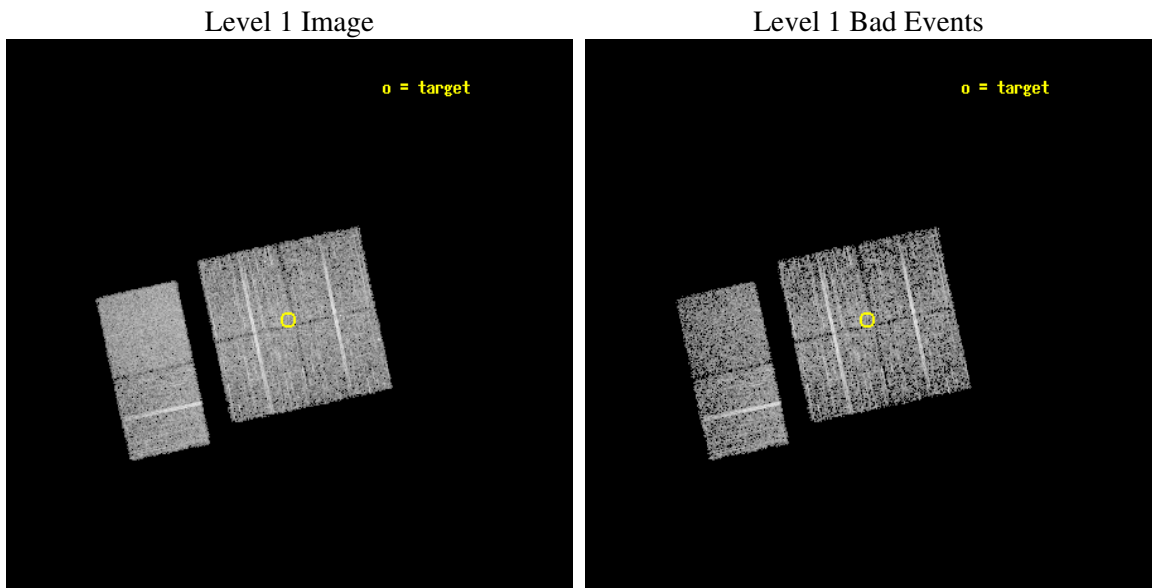
seq_num	200045
obs_id	620
title	X-RAYS FROM THE RHO OPHIUCHI YOUNG STAR CLUSTER
observer	DR. THIERRY MONTMERLE
object	OPHIUCHI MOSAIC #8
dtcycle	0
cycle	P
ra_targ	246.866667
dec_targ	-24.1675
ra_nom	246.86359933932
dec_nom	-24.17151951354
roll_nom	257.9547172211
revision	3
ontime	4480.0000041723
livetime	4423.2715465874
ontime0	4480.0000041723
ontime1	4480.0000041723
ontime2	4480.0000041723
ontime3	4480.0000041723
ontime6	4480.0000041723
ontime7	4480.0000041723
l2events	28284



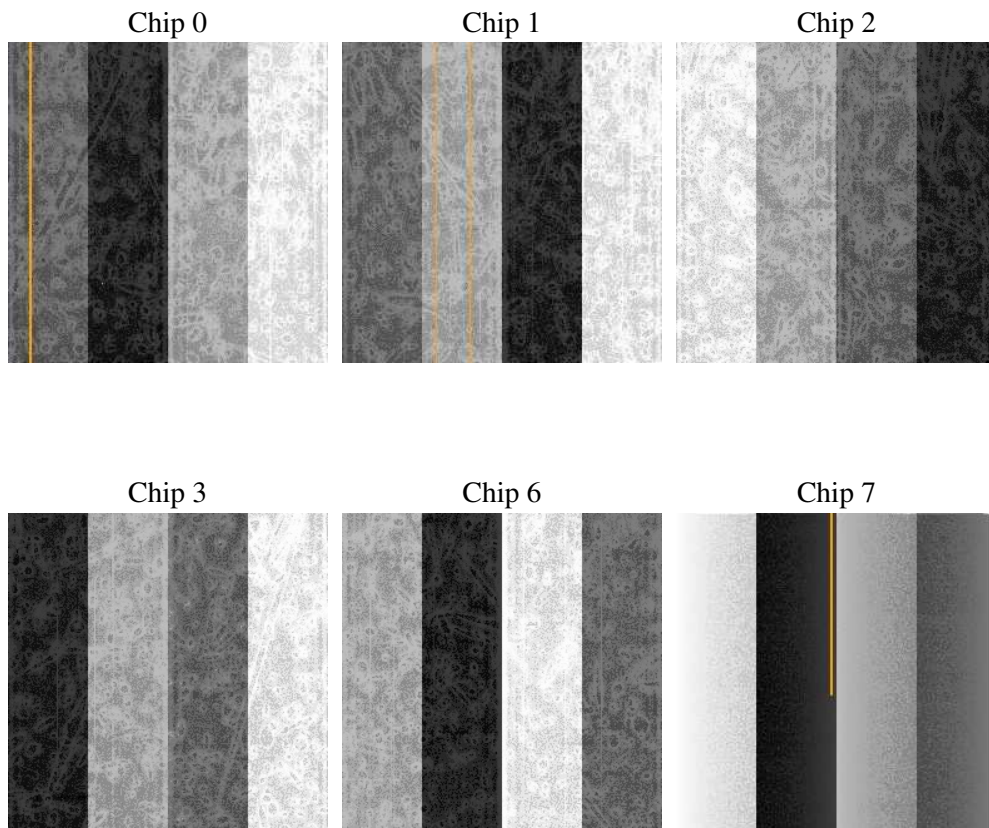
2 OBI

2.1 OBI

2.1.1 Images



2.1.2 Bias



2.1.3 Parameters

obi_num	0
ascdsver	7.6.10
caldsver	3.4.0
date	2007-05-27T20:08:12
revision	3

sched_exp_time	4725.000000
ontime	4480.0000041723
ontime0	4480.0000041723
ontime1	4480.0000041723
ontime2	4480.0000041723
ontime3	4480.0000041723
ontime6	4480.0000041723
ontime7	4480.0000041723
l1events	180948

2.1.4 Events

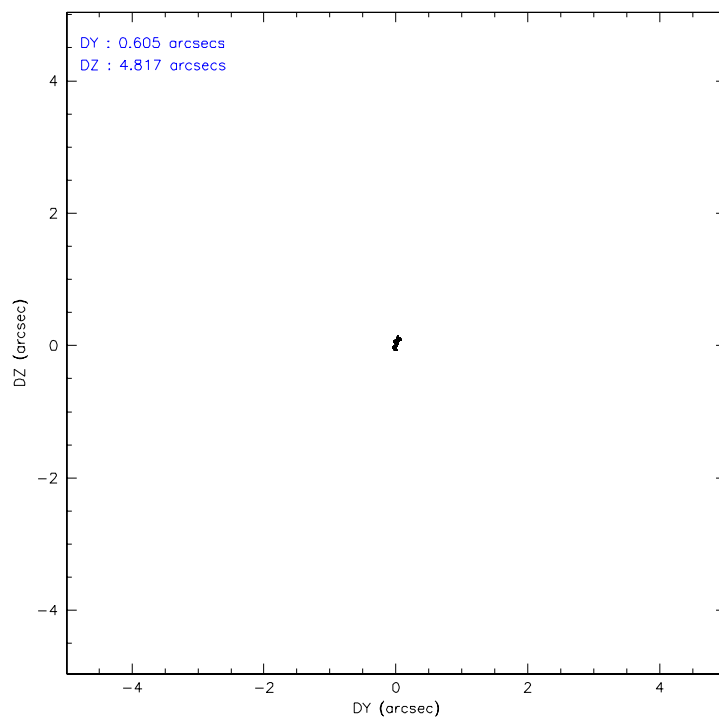
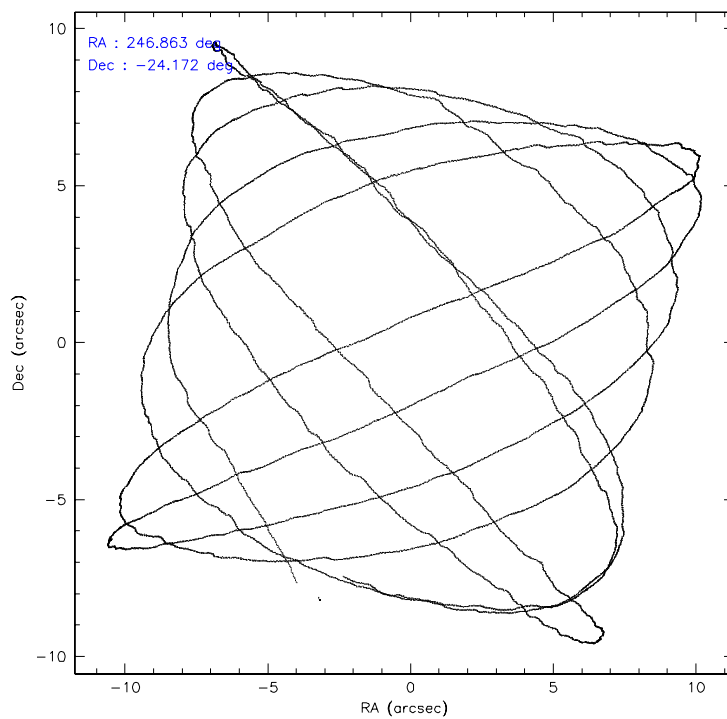
	ccd 0	ccd 1	ccd 2	ccd 3	ccd 6	ccd 7
level 1 events	27540	26974	30388	30469	30760	34817
rejected events	24066	23644	27547	27228	27425	19964
rejected %	87%	87%	90%	89%	89%	57%

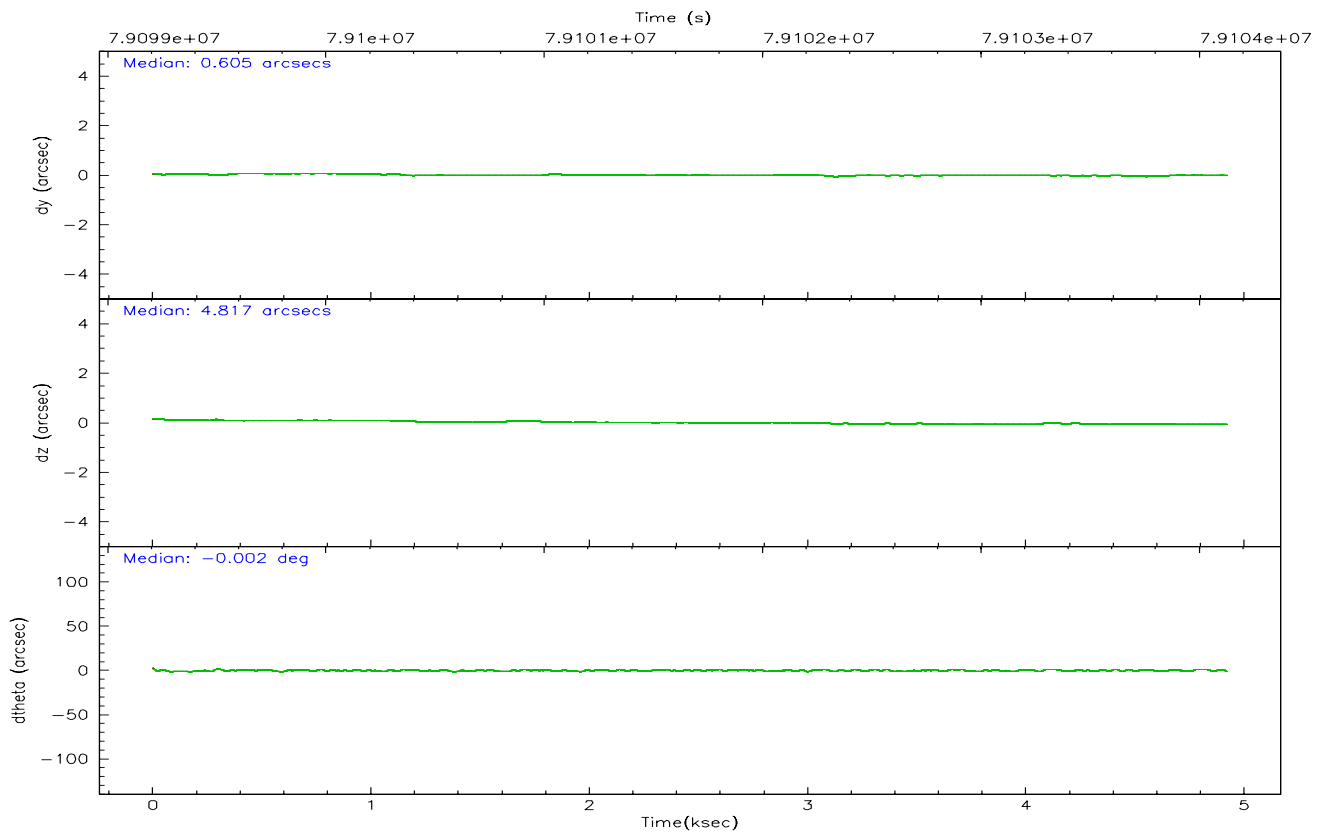
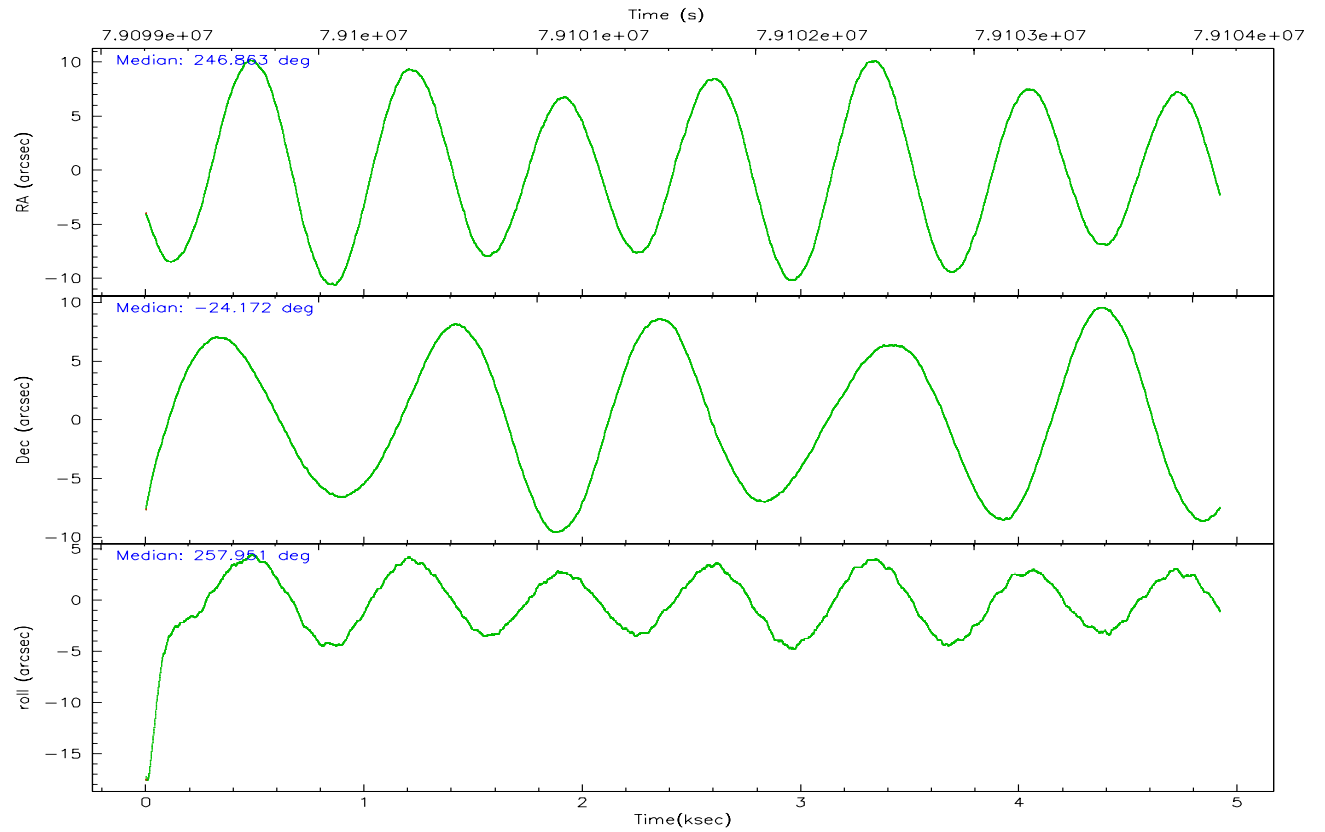
	ccd 0	ccd 1	ccd 2	ccd 3	ccd 6	ccd 7
grade 0 events	1572	1369	1158	1455	1407	1432
	5%	5%	3%	4%	4%	4%
grade 1 events	12	12	13	10	11	43
	0%	0%	0%	0%	0%	0%
grade 2 events	737	629	649	662	637	2844
	2%	2%	2%	2%	2%	8%
grade 3 events	311	350	289	309	355	1404
	1%	1%	0%	1%	1%	4%
grade 4 events	346	376	274	292	327	1352
	1%	1%	0%	0%	1%	3%
grade 5 events	924	1037	840	1045	1139	3334
	3%	3%	2%	3%	3%	9%
grade 6 events	513	610	478	527	613	7836
	1%	2%	1%	1%	1%	22%
grade 7 events	23125	22591	26687	26169	26271	16572
	83%	83%	87%	85%	85%	47%

2.2 Compared Parameters

Parameter	Planned	Actual	Parameter	Planned	Actual
Instrument	ACIS	ACIS	Obspar format version number	6	6
Detector	ACIS-012367	ACIS-012367	Obspar file type	PREDICTED	ACTUAL
Grating	NONE	NONE	Obspar update status	NONE	UPDATED
Data mode	FAINT	FAINT	Number of optional ACIS chips dropped	0	0
Observation mode	POINTING	POINTING	On-chip summing requested	N	N
Pointing RA	246.854381	246.8635993393209	Subarray requested	NONE	NONE
Pointing Dec	-24.145279	-24.17151951353952	Alternating exposures requested	N	N
Pointing Roll	257.742290	257.9547172210964	Primary exposure time	3.200000	3.2
SIM focus pos (mm)	-0.782348	-0.7809083437167272			
SIM defocus (mm)	0	0.001439871863259334			
SIM translation stage pos (mm)	-233.592463	-233.5874344608287			
SIM translation stage offset (mm)	0	-0.005018542100998502			
Observation start time	79099407.184000	79098910.33838899			
Observation start date	2000-07-04T12:02:23	2000-07-04T11:55:10			
Observation end time	79104132.184000	79104583.201098			
Observation end date	2000-07-04T13:21:08	2000-07-04T13:29:43			
Read mode	TIMED	TIMED			

2.3 Aspect



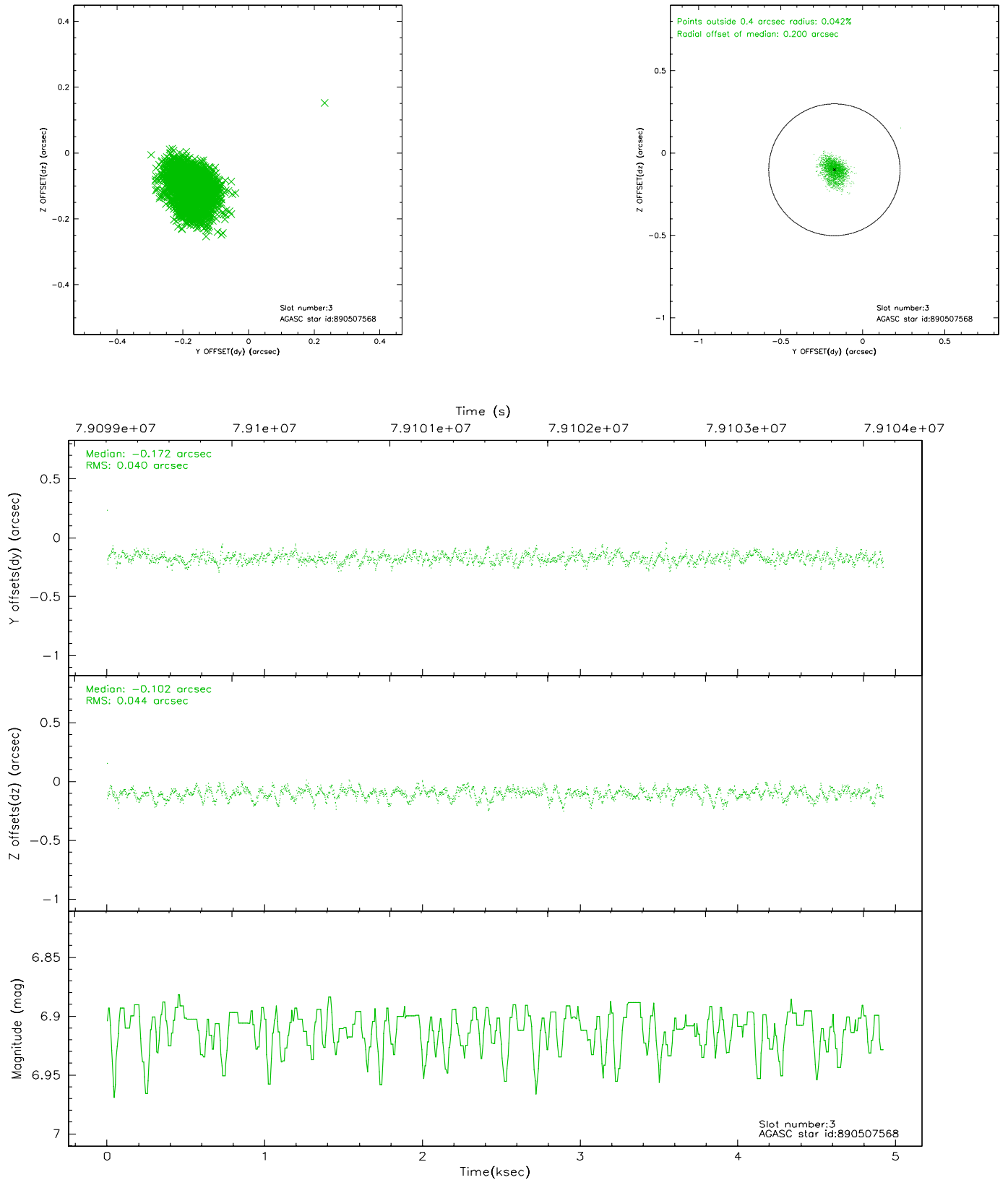


Slot Statistics

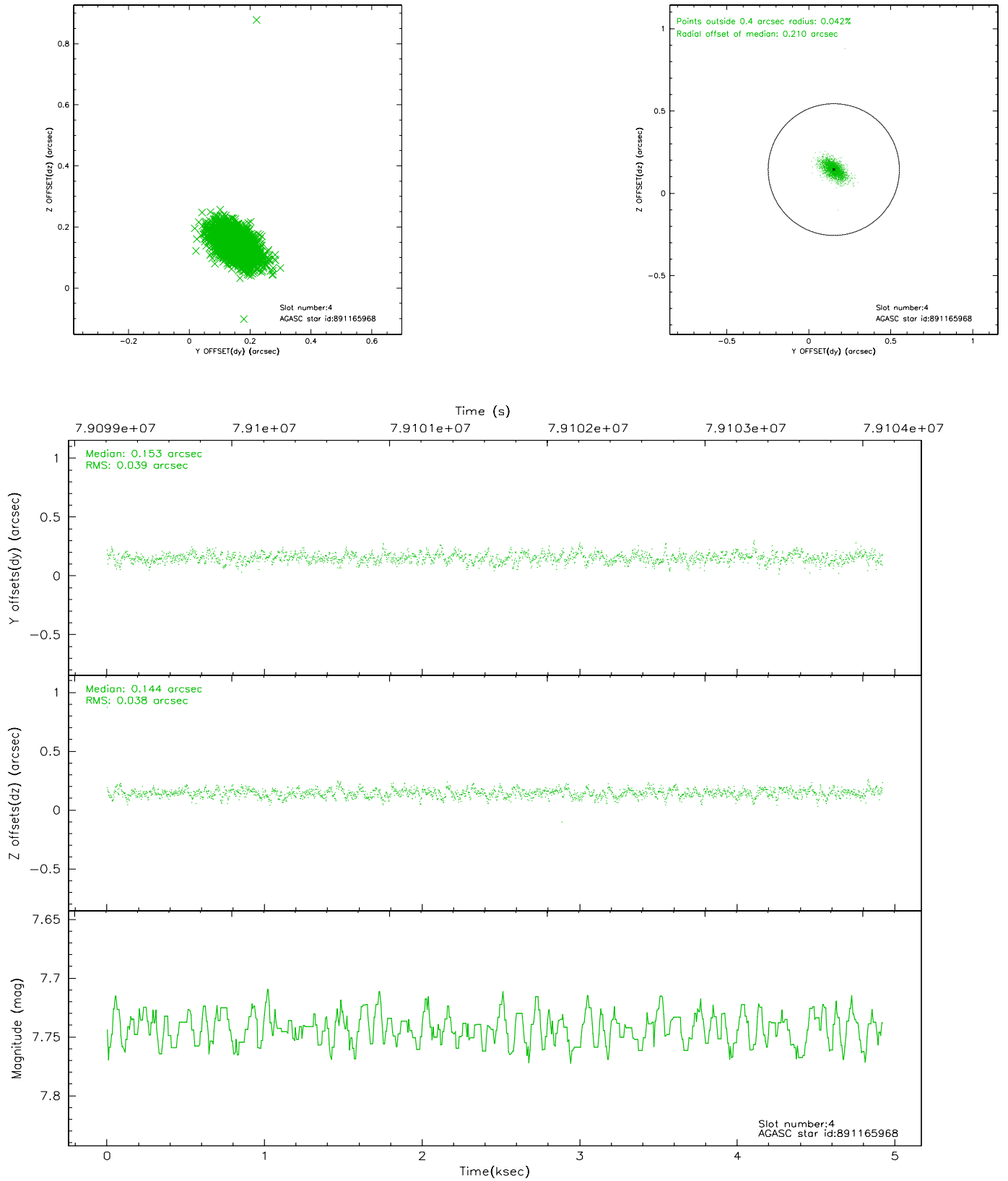
slot	status	id	mag	n_pts	med_dy	med_dz	dr1	dr2	ra	dec	mean_y	mean_z
0	FID	ACIS-I-2	7.15	1201	-0.018	0.003	0.009	0.015	0.000000	0.000000	-754.94	-834.53
1	FID	ACIS-I-4	7.19	1200	-0.078	0.019	0.005	0.009	0.000000	0.000000	2158.50	1071.04
2	FID	ACIS-I-5	7.23	1200	-0.006	0.047	0.008	0.014	0.000000	0.000000	-1807.16	1070.33
3	GUIDE	890507568	6.91	2402	-0.172	-0.102	0.063	0.101	246.351169	-23.460216	-2055.08	-2146.85
4	GUIDE	891165968	7.74	2402	0.153	0.144	0.055	0.095	247.104842	-24.750274	1953.75	1262.57
5	GUIDE	890507552	7.40	2402	-0.179	-0.124	0.070	0.111	246.396169	-23.405213	-2279.68	-2043.92
6	GUIDE	891165960	7.61	2402	0.078	0.068	0.060	0.096	247.245842	-24.537990	1109.54	1553.01
7	GUIDE	891031768	7.58	2401	0.123	0.022	0.056	0.094	246.351325	-24.465712	1480.13	-1364.11

2.4 Star Slots

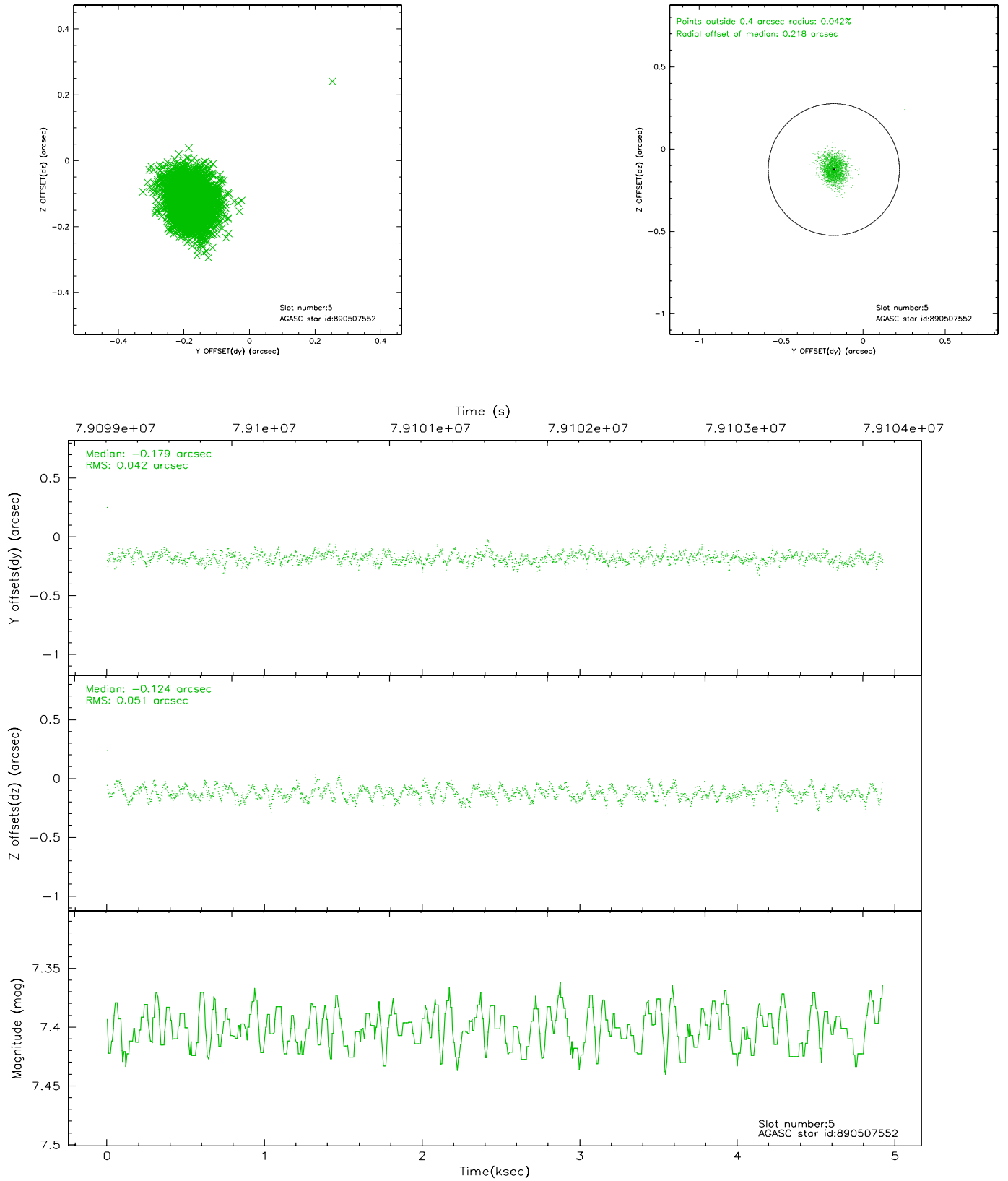
2.4.1 Slot 3



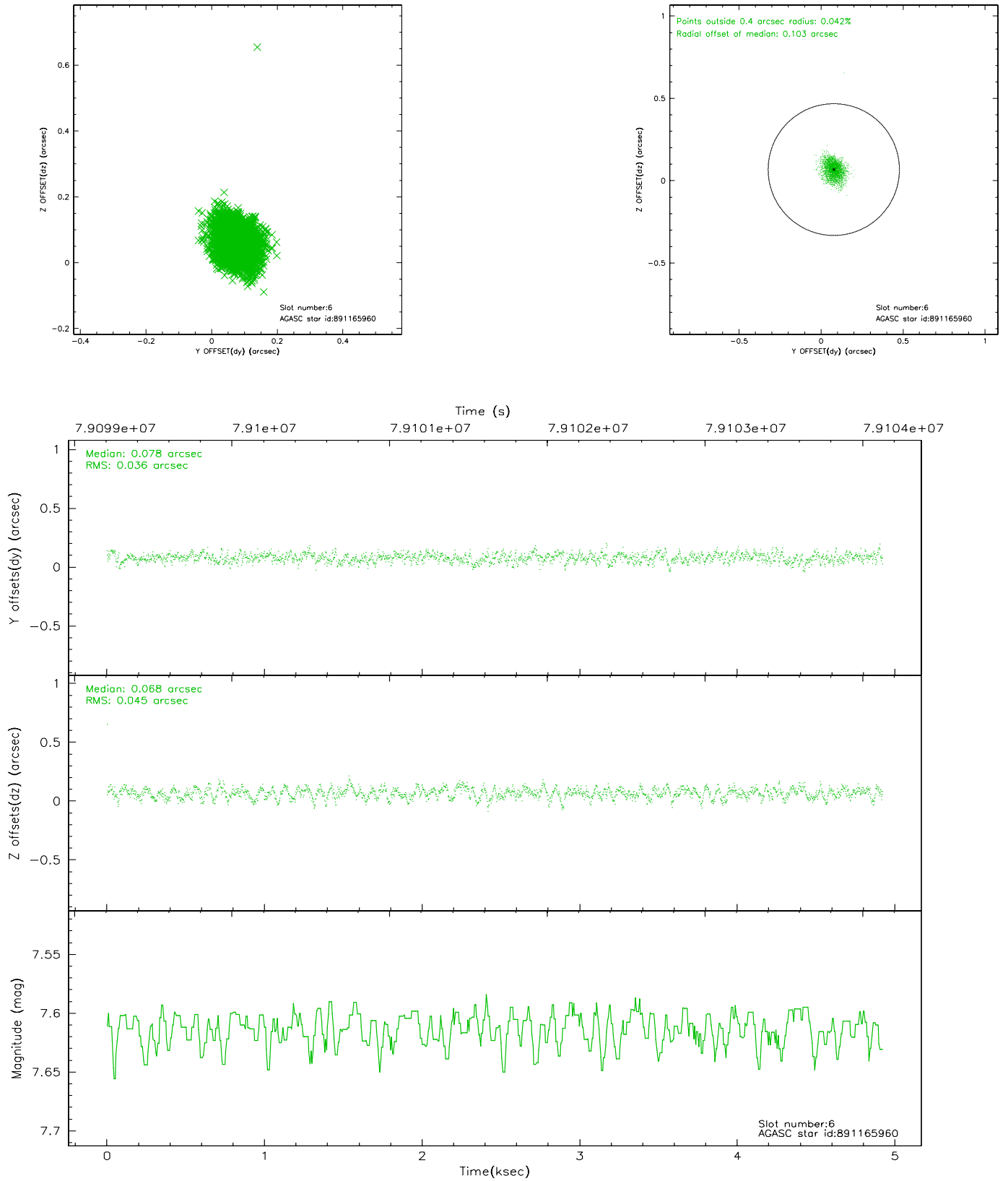
2.4.2 Slot 4



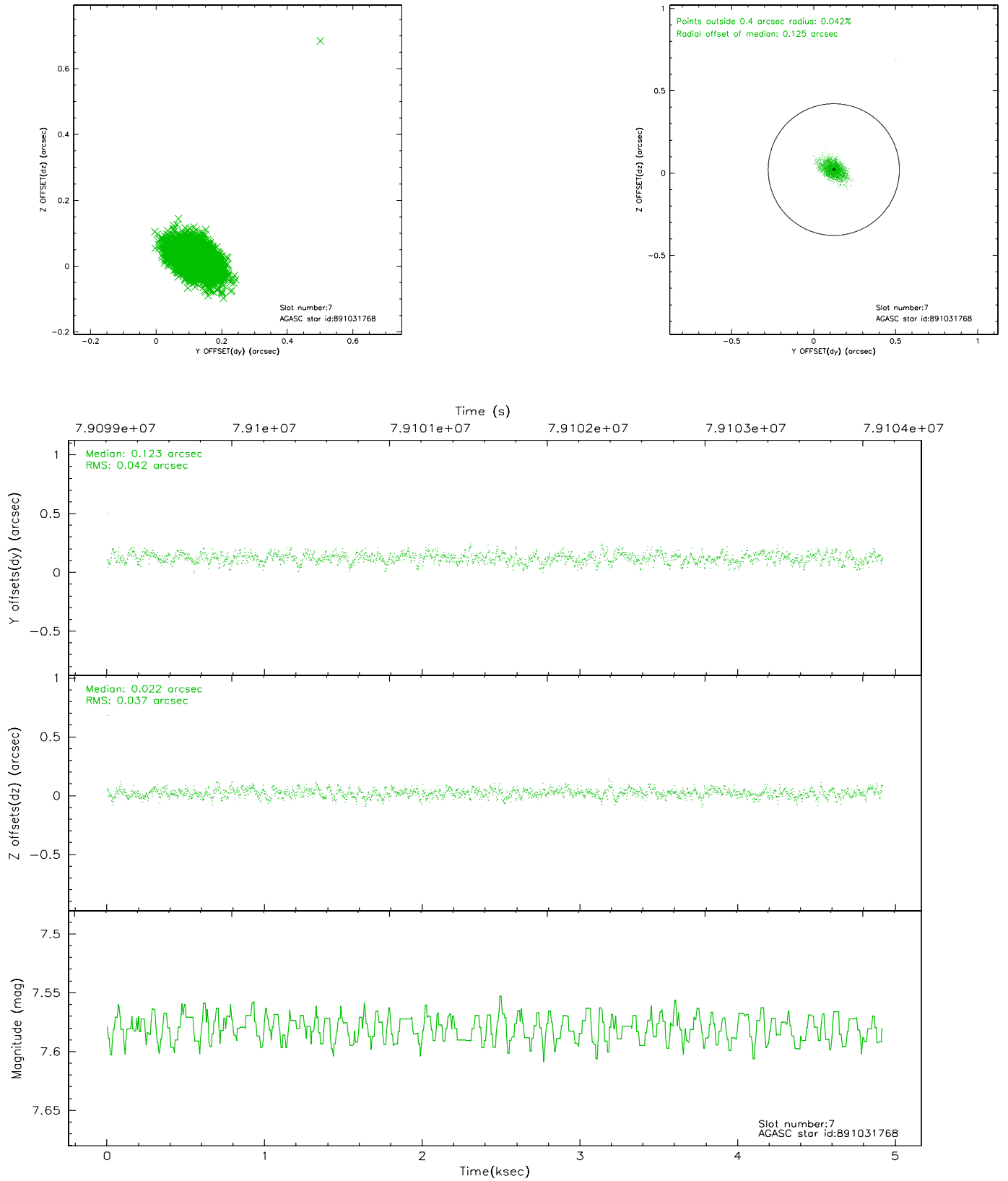
2.4.3 Slot 5



2.4.4 Slot 6

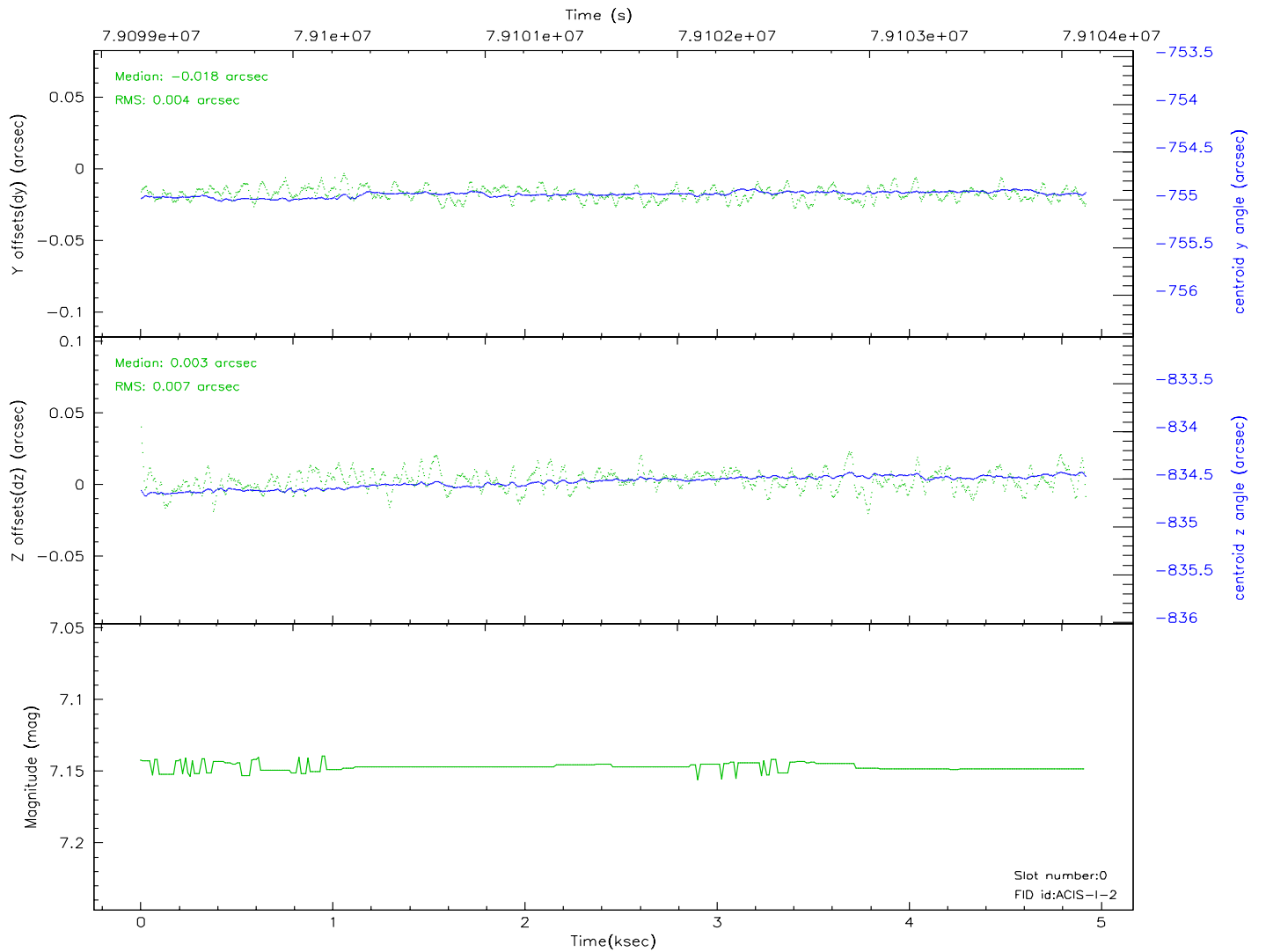
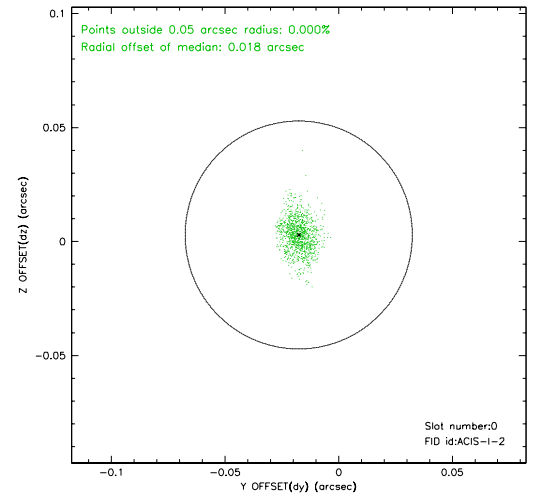
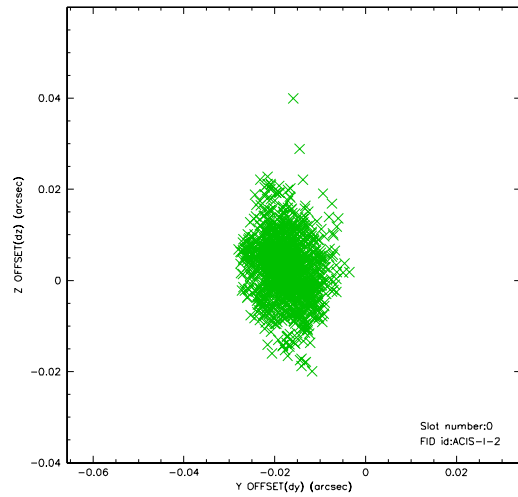


2.4.5 Slot 7

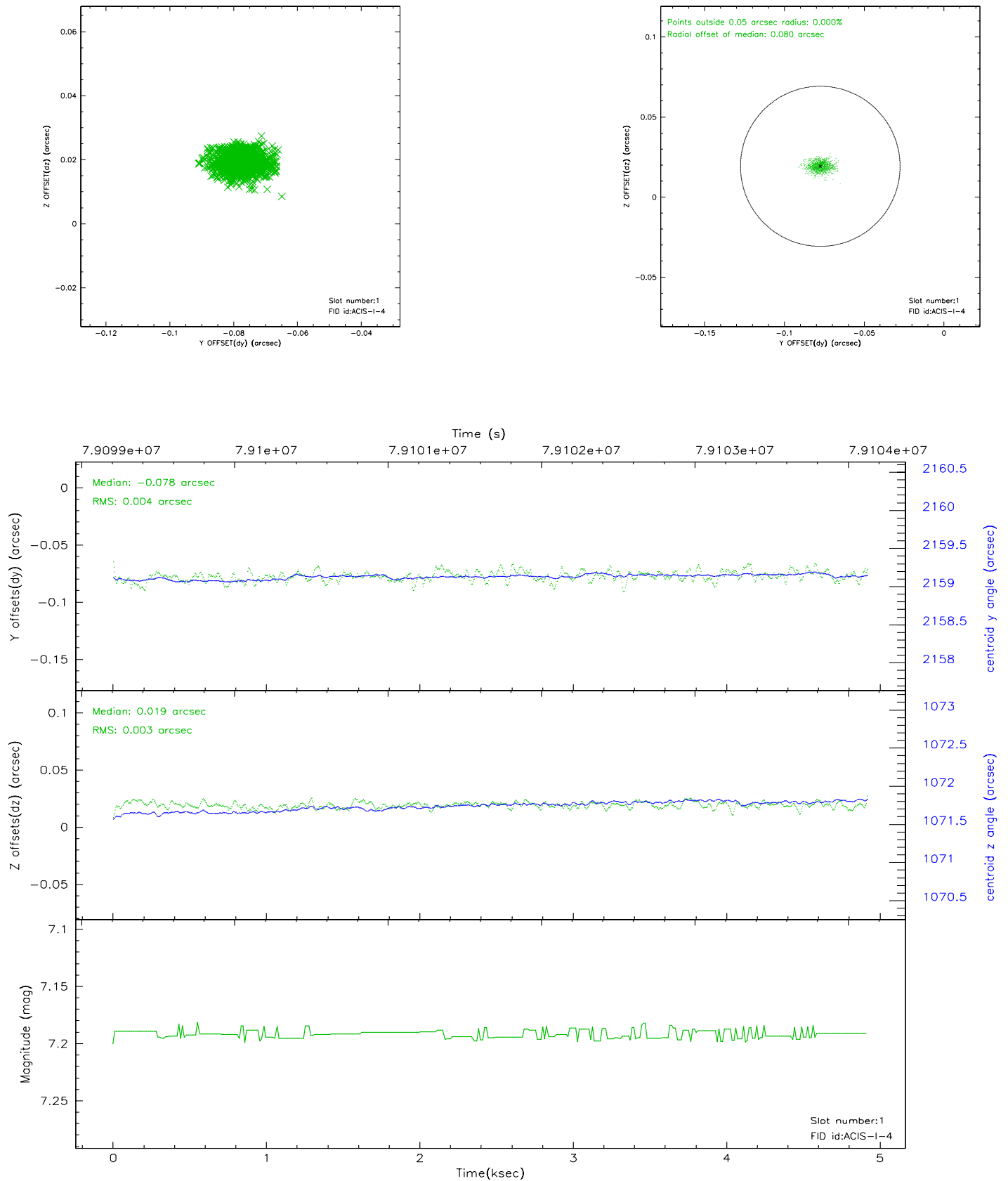


2.5 FID Slots

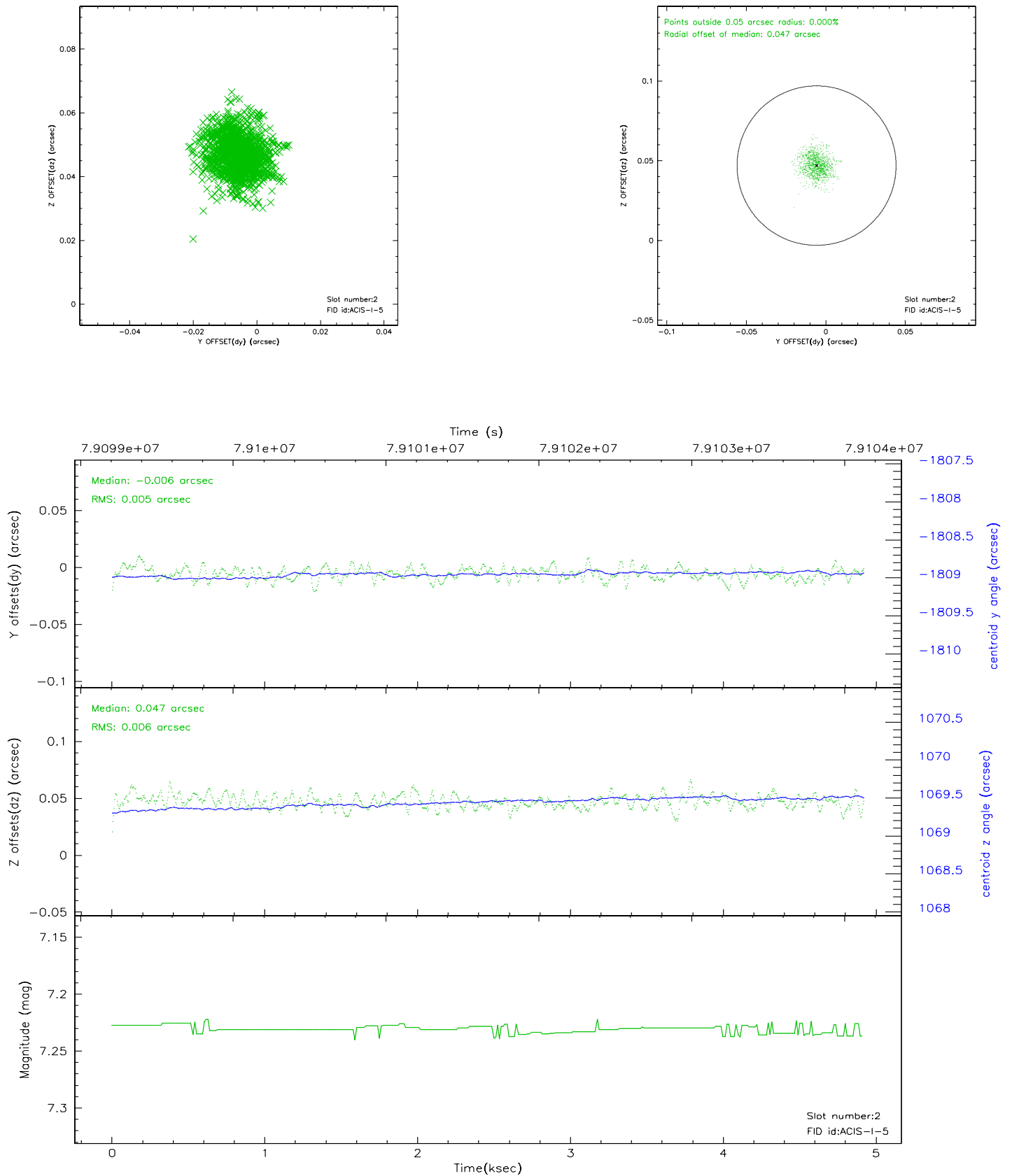
2.5.1 Slot 0



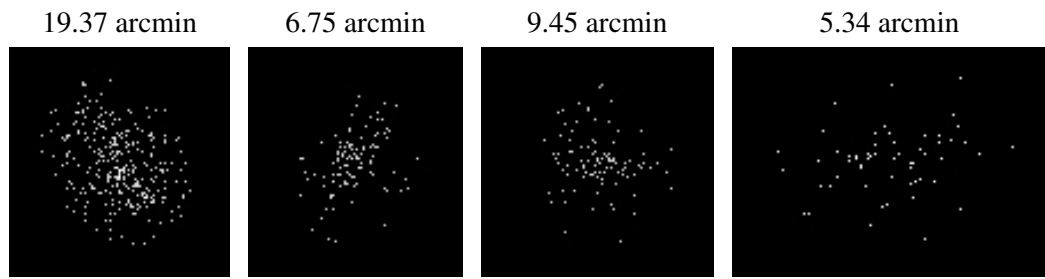
2.5.2 Slot 1



2.5.3 Slot 2



3 Point Sources



A Summary

A.1 Status

V&V Scientist	Jen Lauer
V&V Date (YYYY-MM-DD)	2007.05.29
V&V Edition	1
V&V Disposition and Status	OK
V&V Charge Time	4.483

A.2 Comments