

# V&V Reference Report

## L2 ASCDS Version : 7.6.10

Observation 28 - L2 Version 001  
Chandra X-Ray Center

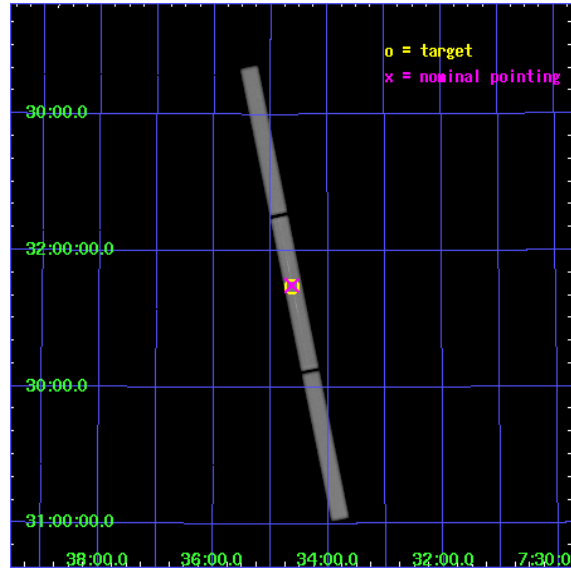
L2 Processing Date : Jun 9 2007

## Contents

<b>1</b>	<b>Front</b>	<b>2</b>
<b>2</b>	<b>OBI</b>	<b>3</b>
2.1	OBI . . . . .	3
2.1.1	Images . . . . .	3
2.1.2	Parameters . . . . .	4
2.1.3	Events . . . . .	4
2.2	Compared Parameters . . . . .	5
2.3	Aspect . . . . .	6
2.4	Star Slots . . . . .	9
2.4.1	Slot 3 . . . . .	9
2.4.2	Slot 4 . . . . .	10
2.4.3	Slot 5 . . . . .	11
2.4.4	Slot 6 . . . . .	12
2.4.5	Slot 7 . . . . .	13
2.5	FID Slots . . . . .	14
2.5.1	Slot 0 . . . . .	14
2.5.2	Slot 1 . . . . .	15
2.5.3	Slot 2 . . . . .	16
<b>3</b>	<b>Gratings</b>	<b>17</b>
3.1	LETG Arm . . . . .	17
<b>A</b>	<b>Summary</b>	<b>19</b>
A.1	Status . . . . .	19
A.2	Comments . . . . .	19

# 1 Front

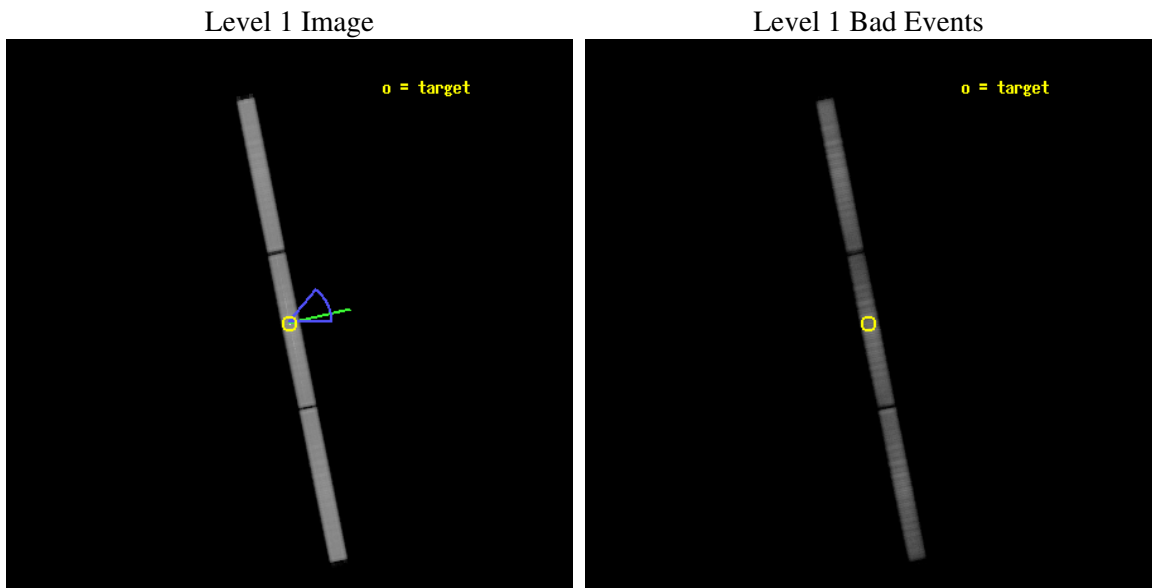
seq_num	200026
obs_id	28
title	OBSERVATIONS OF STELLAR CORONAE WITH LETGS
observer	Dr. Peter Predehl
object	YY GEM
ra_targ	113.65667
dec_targ	31.86969
ra_nom	113.65810539252
dec_nom	31.874461802018
roll_nom	78.349300691044
revision	4
ontime	57951.70843415
livetime	57649.888643982
l2events	2133334



## 2 OBI

### 2.1 OBI

#### 2.1.1 Images



### 2.1.2 Parameters

obi_num	1
ascdsver	7.6.10
caldbver	3.4.0
date	2007-06-09T14:38:45
revision	4

sched_exp_time	57969.281000
ontime	57951.708435148
l1events	3392005

### 2.1.3 Events

Level 1 Events

	<b>segment 1</b>	<b>segment 2</b>	<b>segment 3</b>
level 1 events	1130877	1127743	1133385
rejected events	292322	310234	350705
rejected %	25%	27%	30%

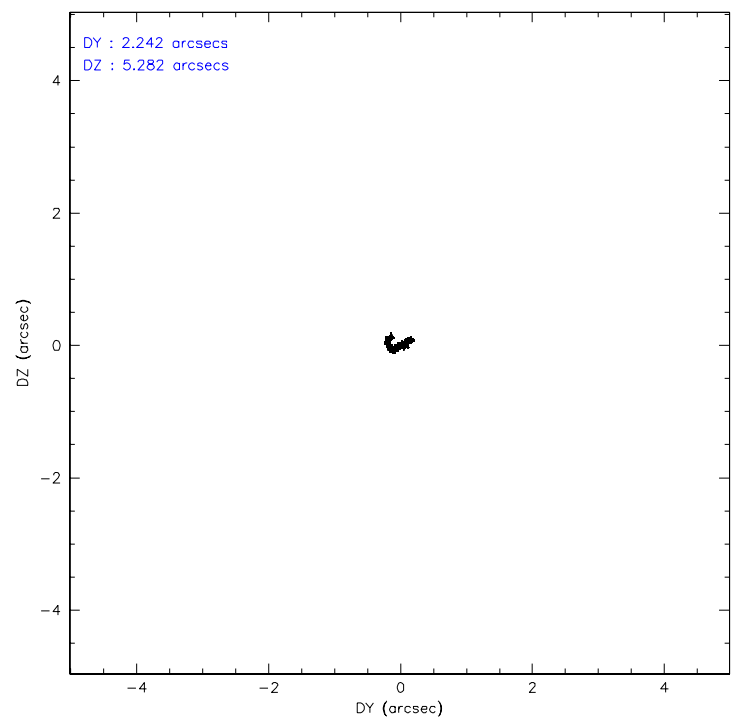
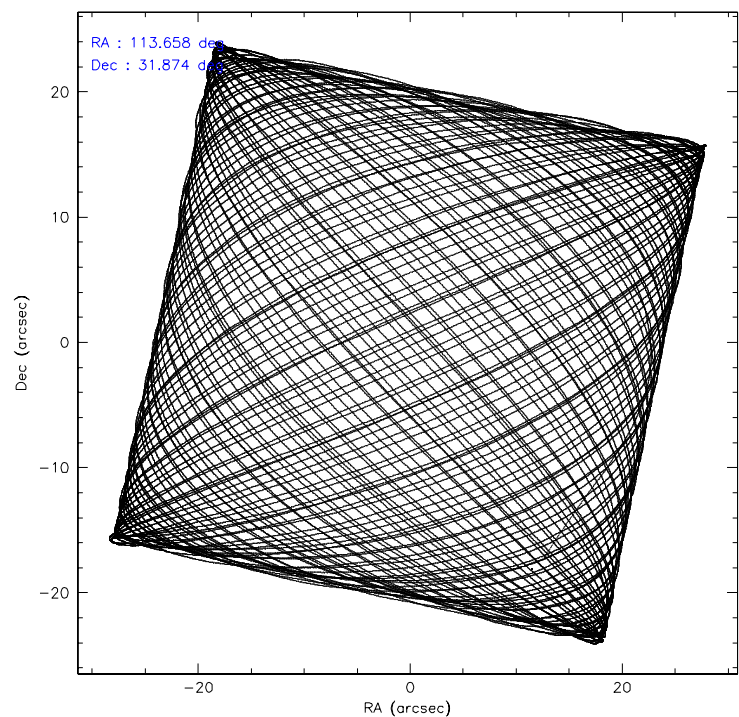


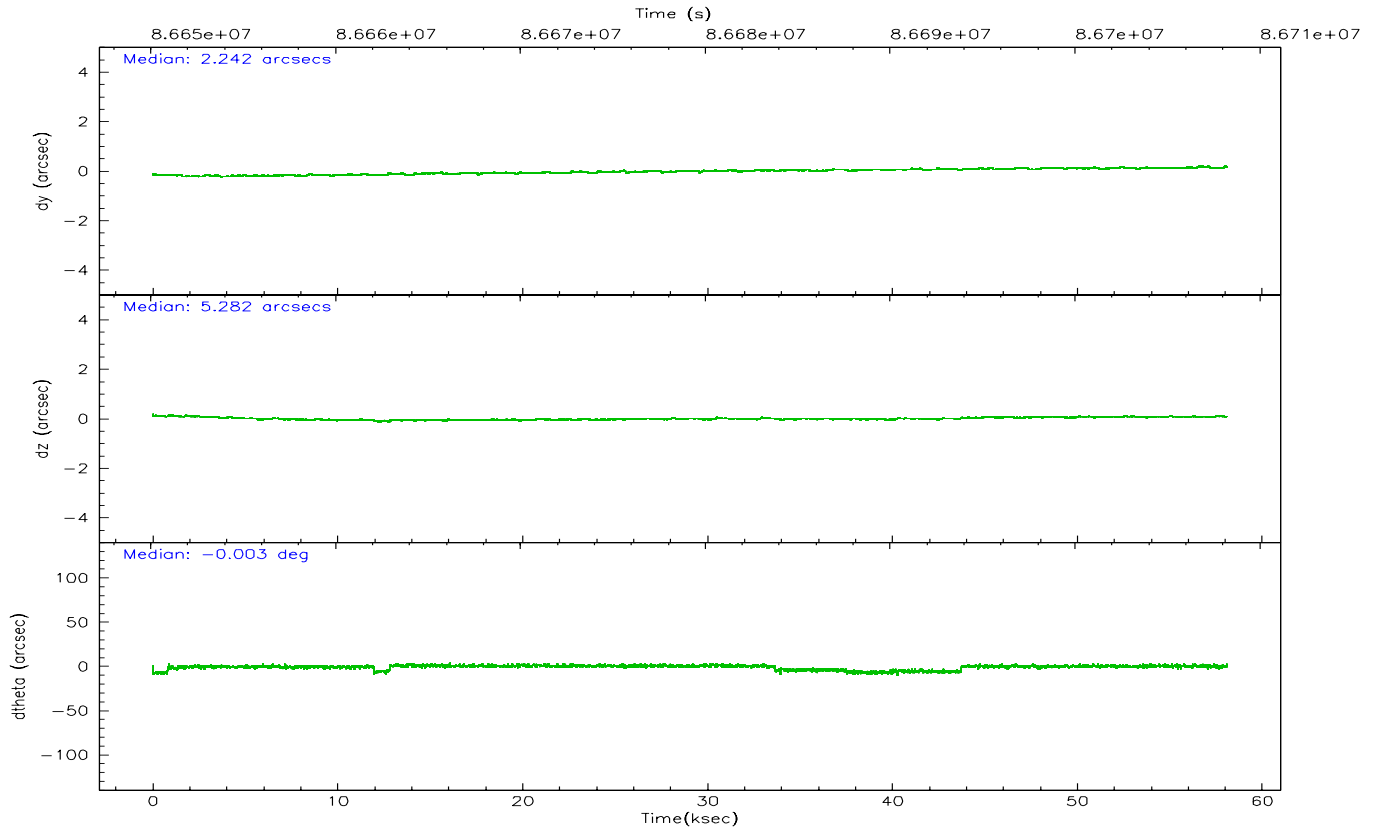
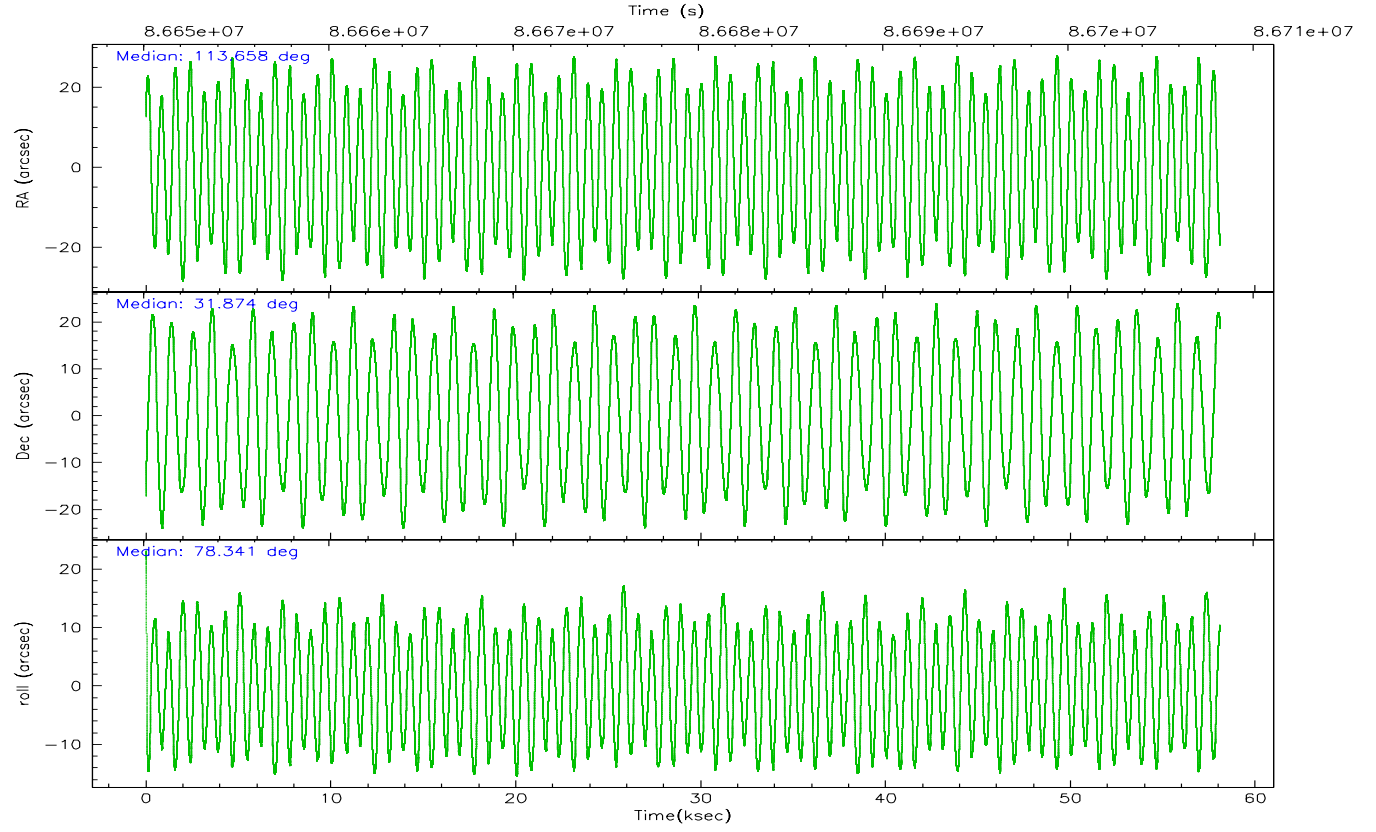
## 2.2 Compared Parameters

Parameter	Planned	Actual
Instrument	HRC	HRC
Detector	HRC-S	HRC-S
Grating	LETG	LETG
Data mode	OBSERVING	OBSERVING
Observation mode	POINTING	POINTING
Pointing RA	113.670108	113.6581053925201
Pointing Dec	31.847581	31.87446180201791
Pointing Roll	78.275617	78.34930069104439
Roll angle	65.000000	65.000000
Roll tolerance	25.000000	25.000000
Roll constraint allows 180D rotation	N	N
SIM focus pos (mm)	-1.429586	-1.428180813131781
SIM defocus (mm)	0.1037507710433287	0.1051558262725154
SIM translation stage pos (mm)	250.455976	250.466033080201
SIM translation stage offset (mm)	0	-0.01005468664627074
Observation start time	86650264.184000	86649086.75793099
Observation start date	2000-09-29T21:30:00	2000-09-29T21:11:26
Observation end time	86708233.184000	86709224.535199
Observation end date	2000-09-30T13:36:09	2000-09-30T13:53:44

Parameter	Planned	Actual
Obspar format version number	6	6
Obspar file type	PREDICTED	ACTUAL
Obspar update status	NONE	UPDATED

2.3 Aspect



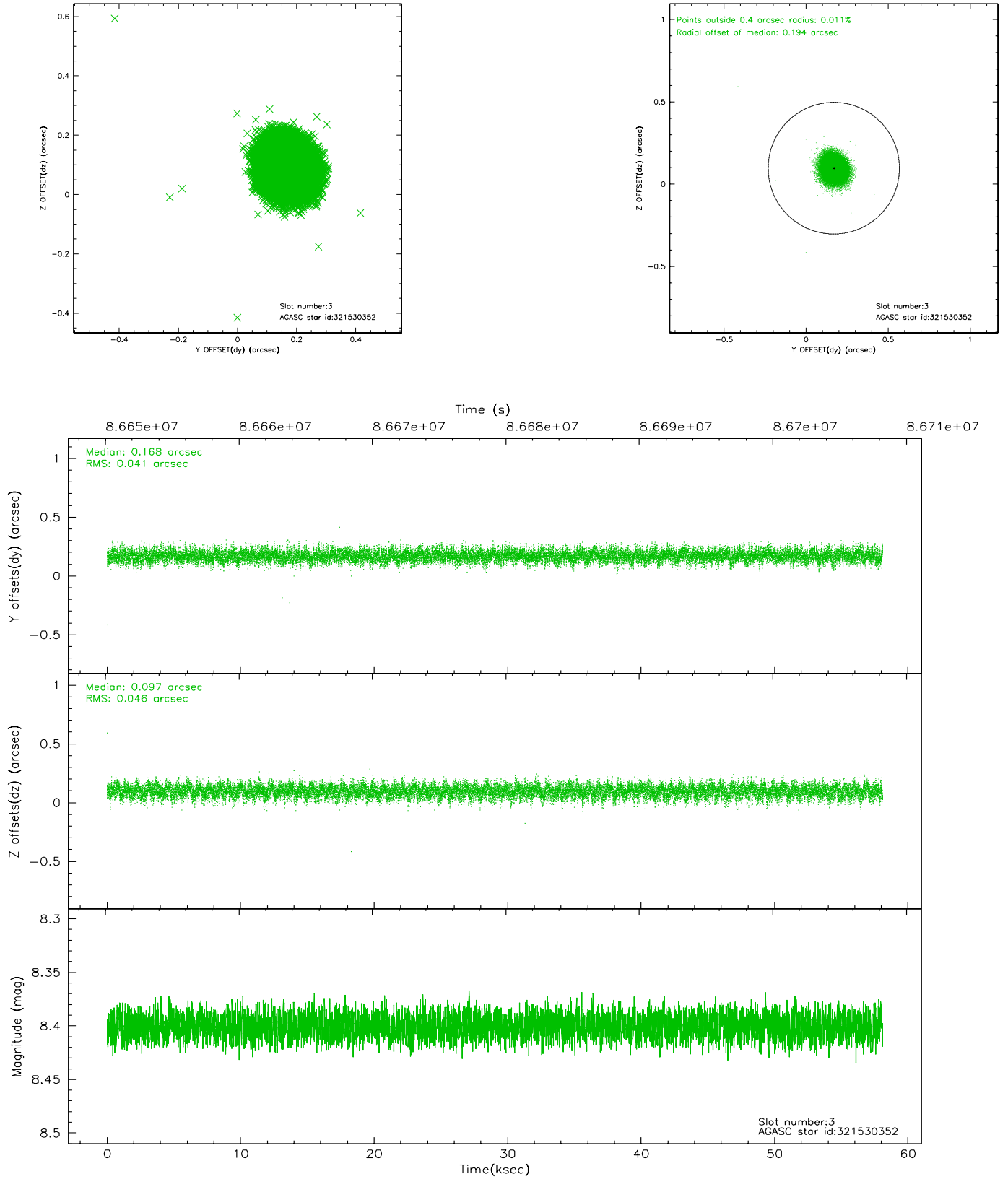


### Slot Statistics

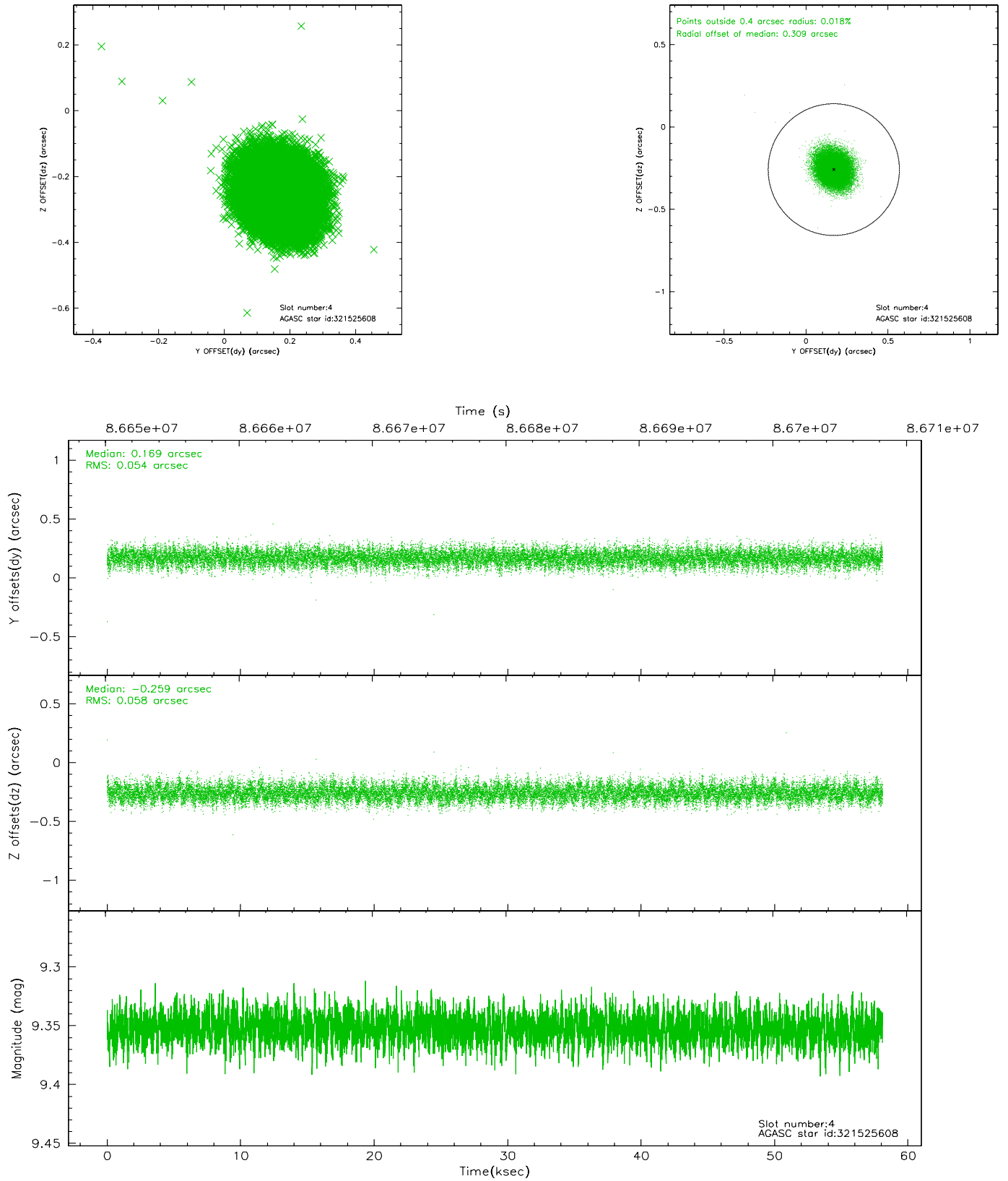
slot	status	id	mag	n_pts	med_dy	med_dz	dr1	dr2	ra	dec	mean_y	mean_z
0	FID	HRC-S-1	7.00	14172	0.127	-0.159	0.009	0.017	0.000000	0.000000	-1156.26	-453.83
1	FID	HRC-S-3	7.02	14172	0.150	-0.040	0.010	0.017	0.000000	0.000000	-1159.04	575.79
2	FID	HRC-S-4	6.96	14169	0.112	-0.099	0.007	0.012	0.000000	0.000000	1241.90	578.37
3	GUIDE	321530352	8.40	28337	0.168	0.097	0.066	0.104	113.987060	31.461448	-1160.93	-1234.72
4	GUIDE	321525608	9.35	28330	0.169	-0.259	0.084	0.136	113.158985	31.352321	-2060.87	1177.02
5	GUIDE	321520736	9.26	28335	0.076	-0.019	0.085	0.138	113.387072	31.695033	-712.24	737.97
6	GUIDE	322045344	9.41	28327	-0.069	0.251	0.086	0.142	113.860327	32.204751	1377.83	-304.94
7	GUIDE	322044504	9.62	28320	-0.345	-0.074	0.108	0.177	114.334082	32.343062	2163.59	-1612.91

## 2.4 Star Slots

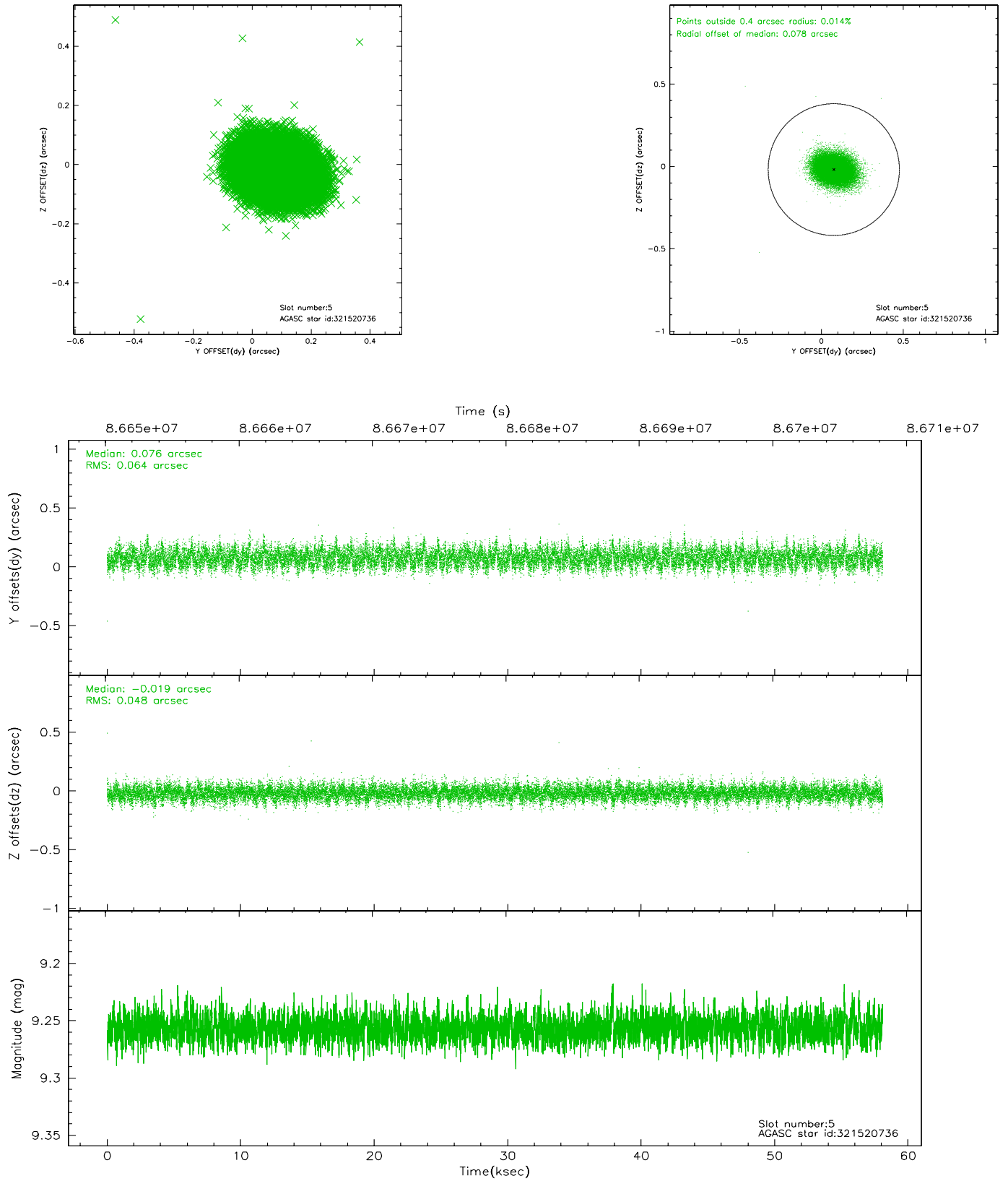
### 2.4.1 Slot 3



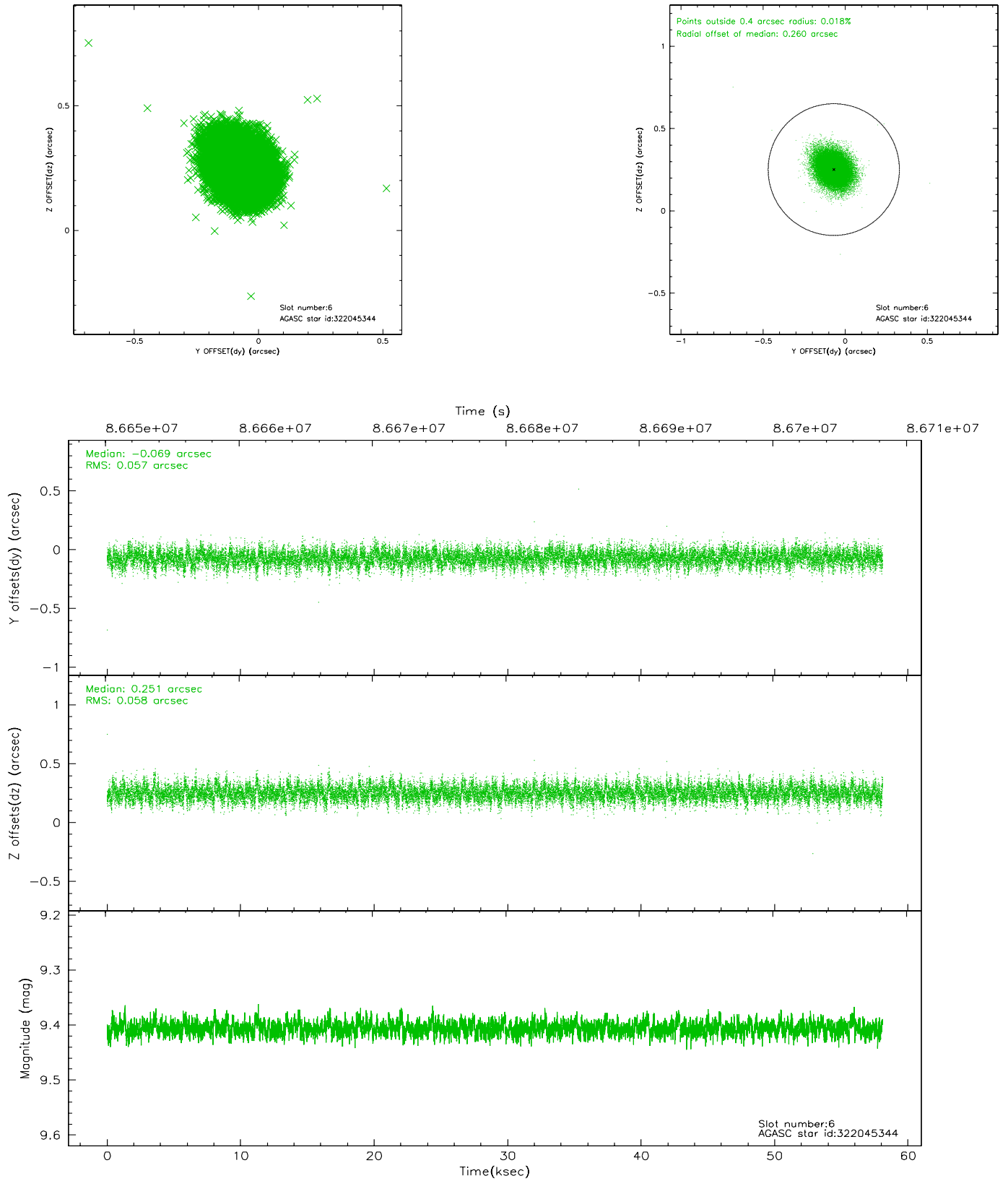
## 2.4.2 Slot 4



### 2.4.3 Slot 5

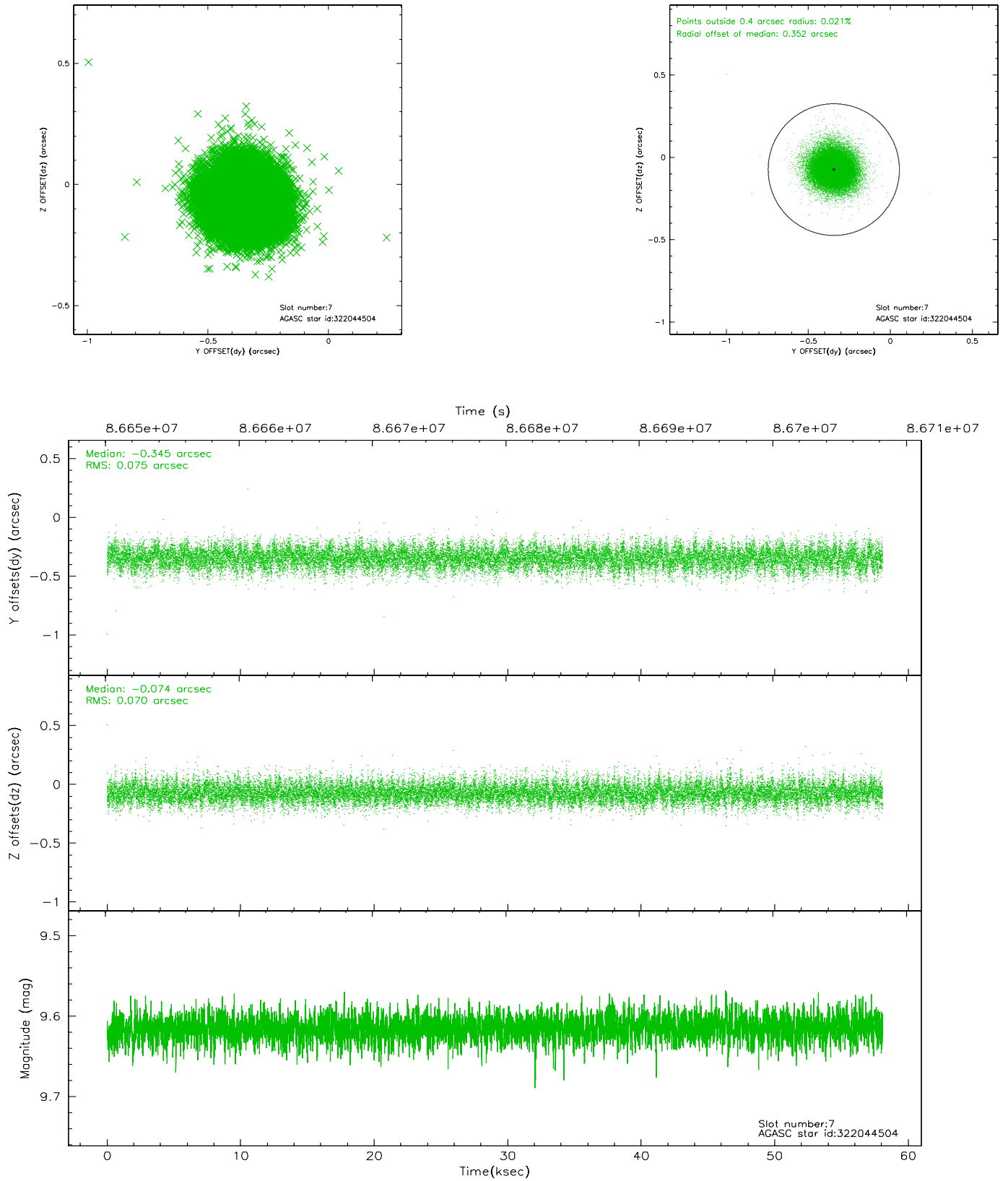


## 2.4.4 Slot 6



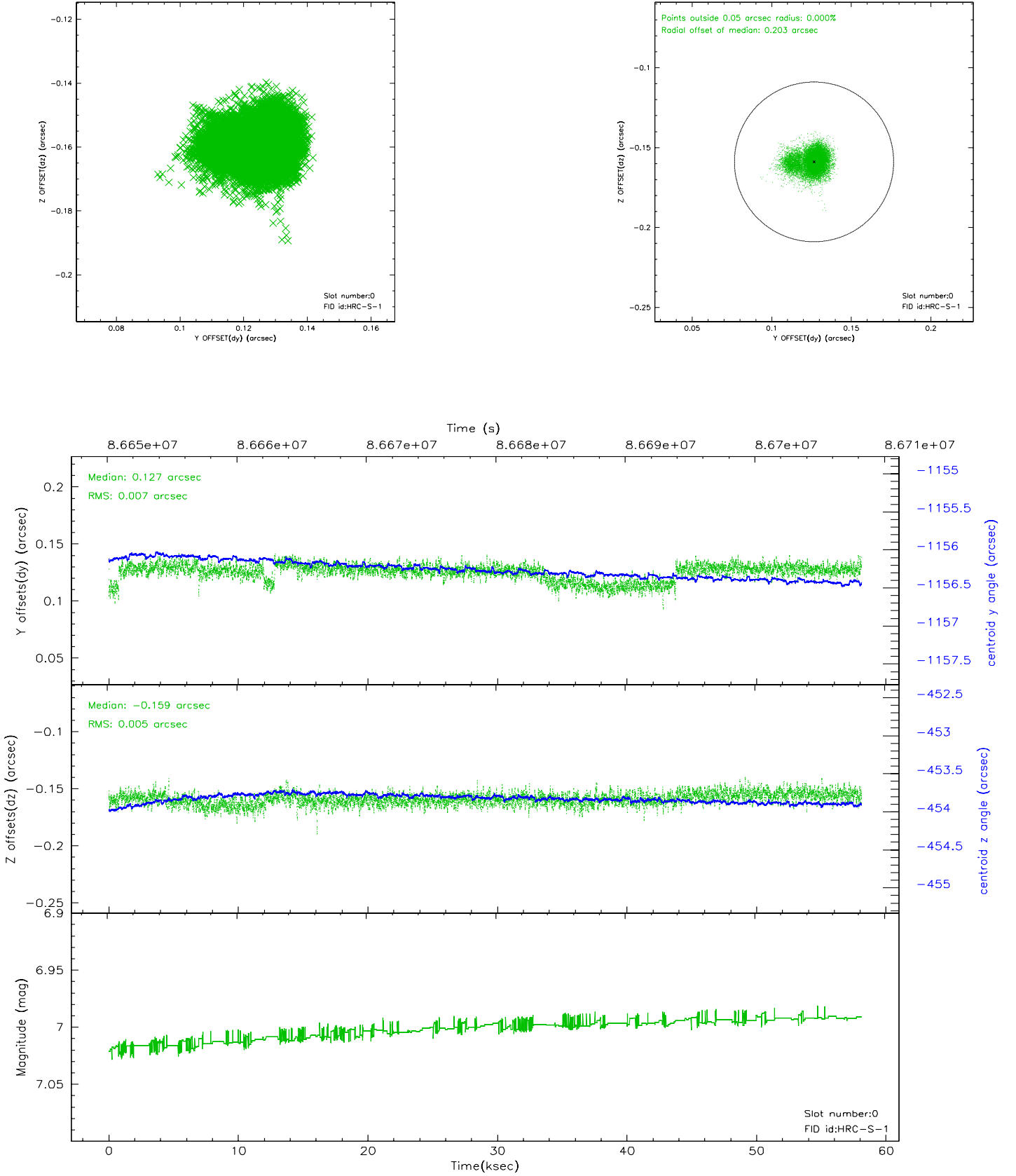


## 2.4.5 Slot 7

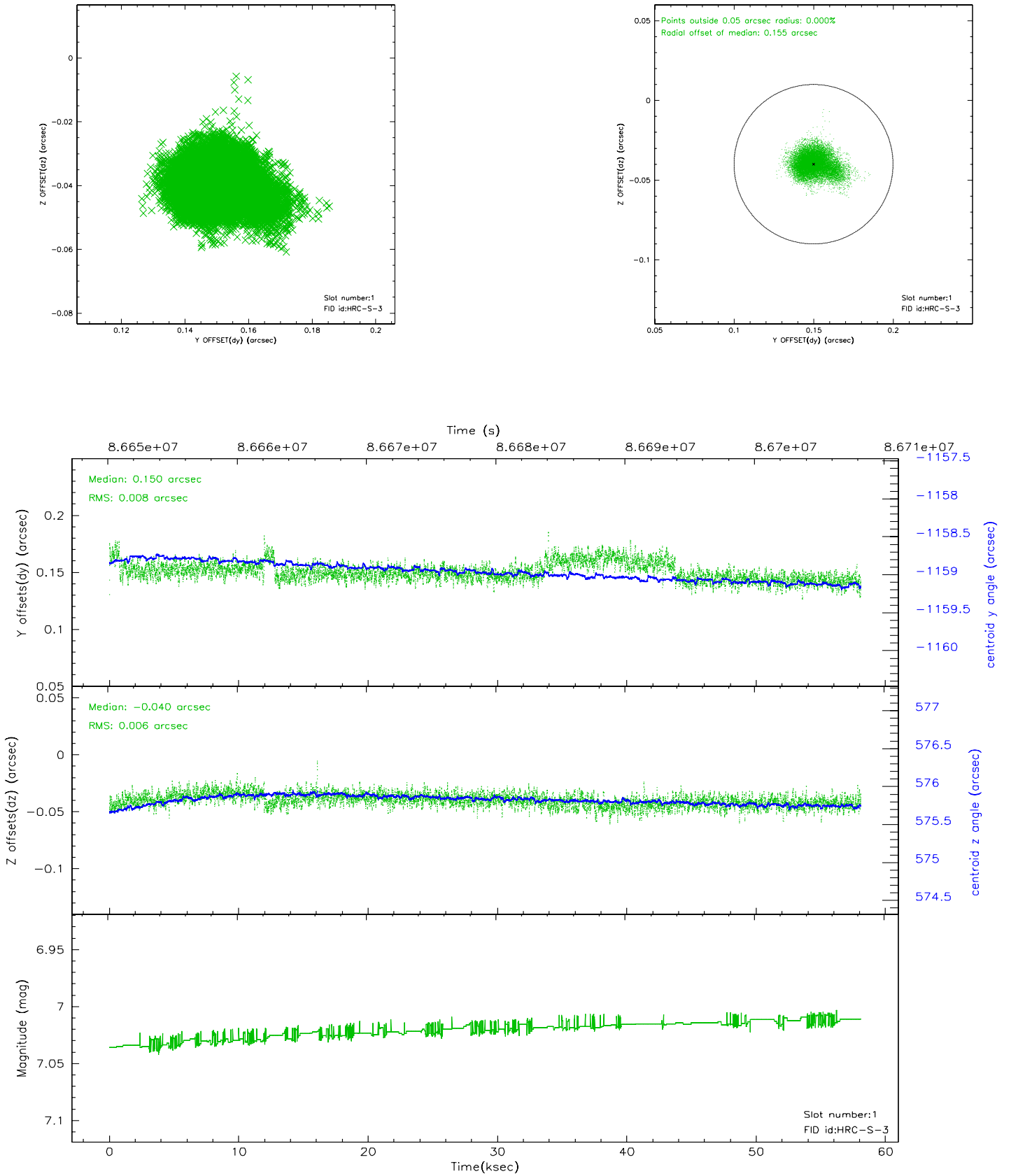


## 2.5 FID Slots

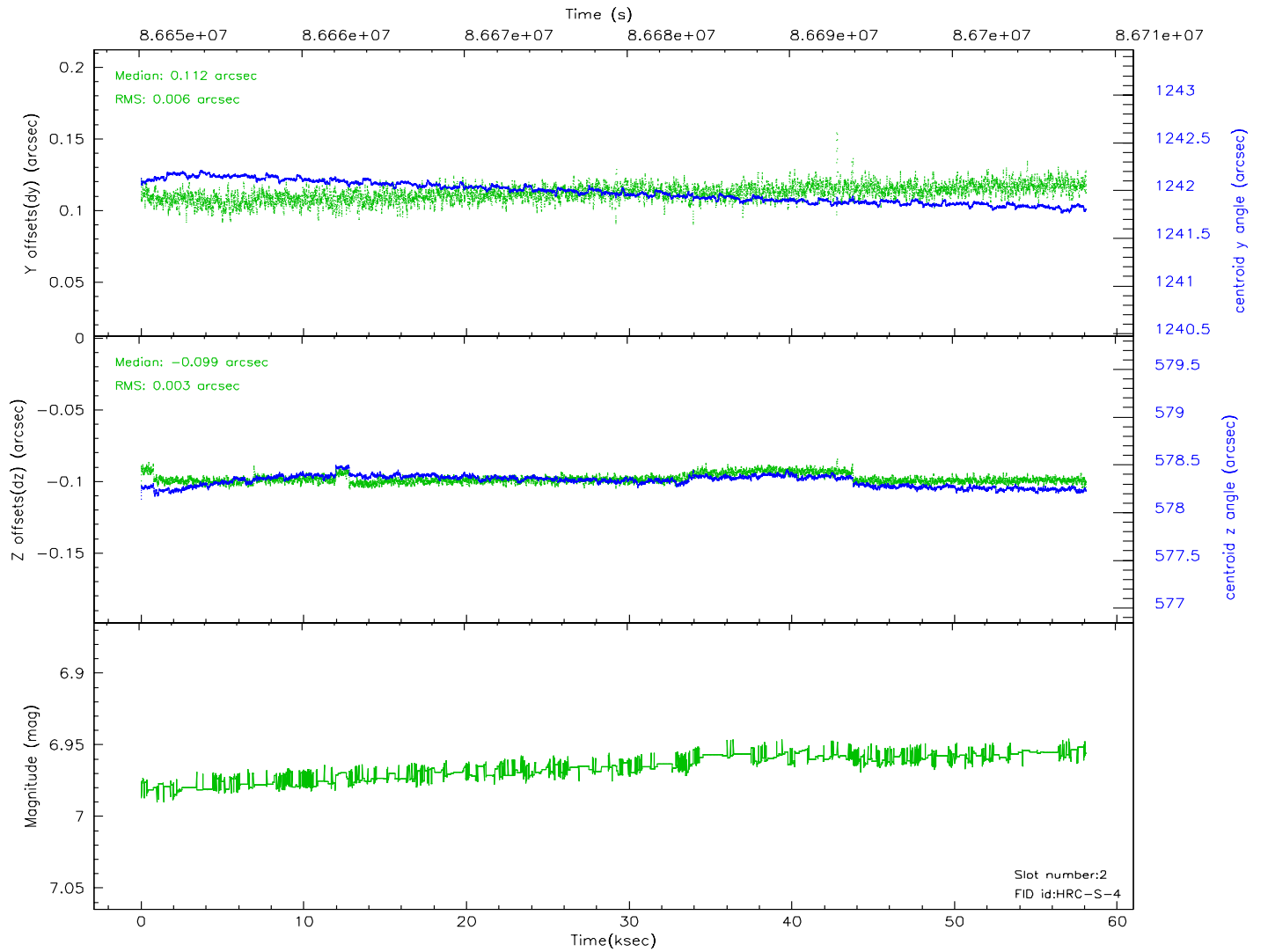
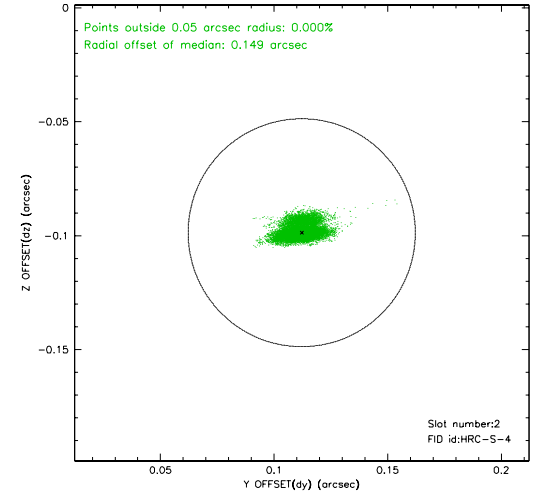
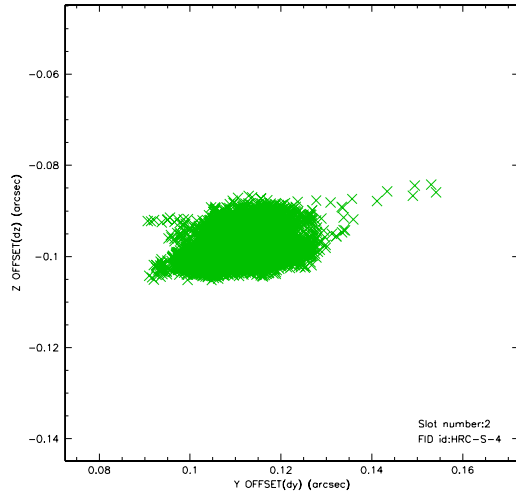
### 2.5.1 Slot 0



## 2.5.2 Slot 1

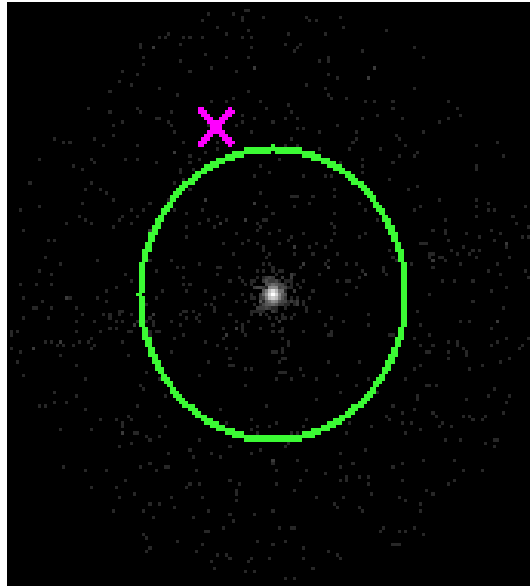


### 2.5.3 Slot 2



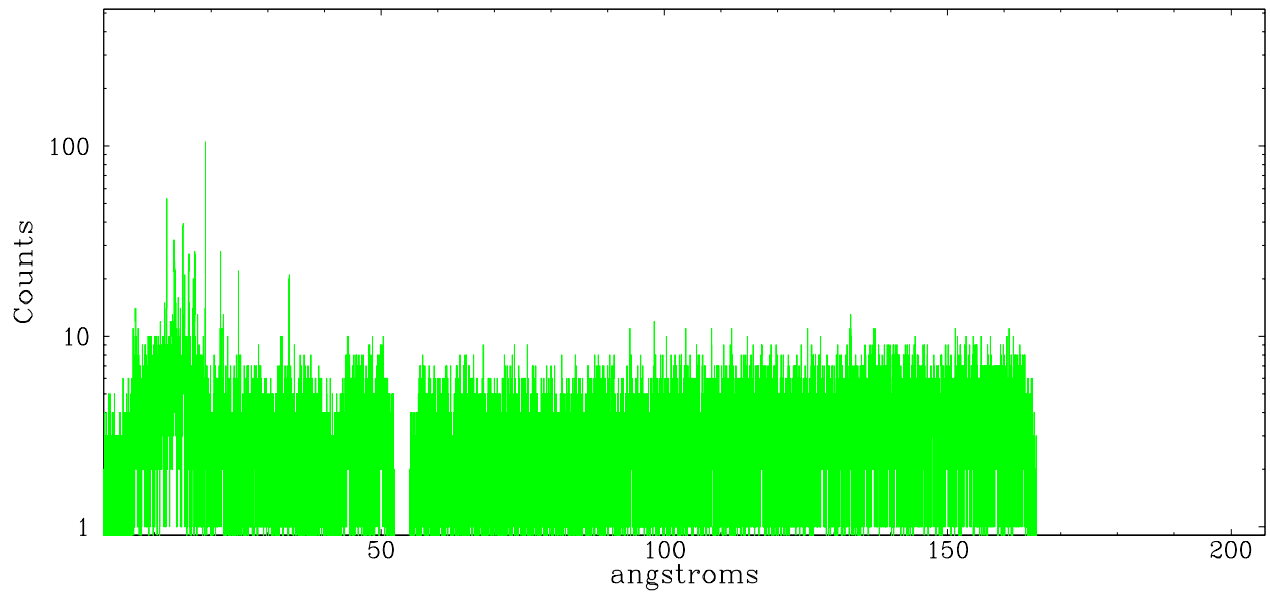
## 3 Gratings

### 3.1 LETG Arm

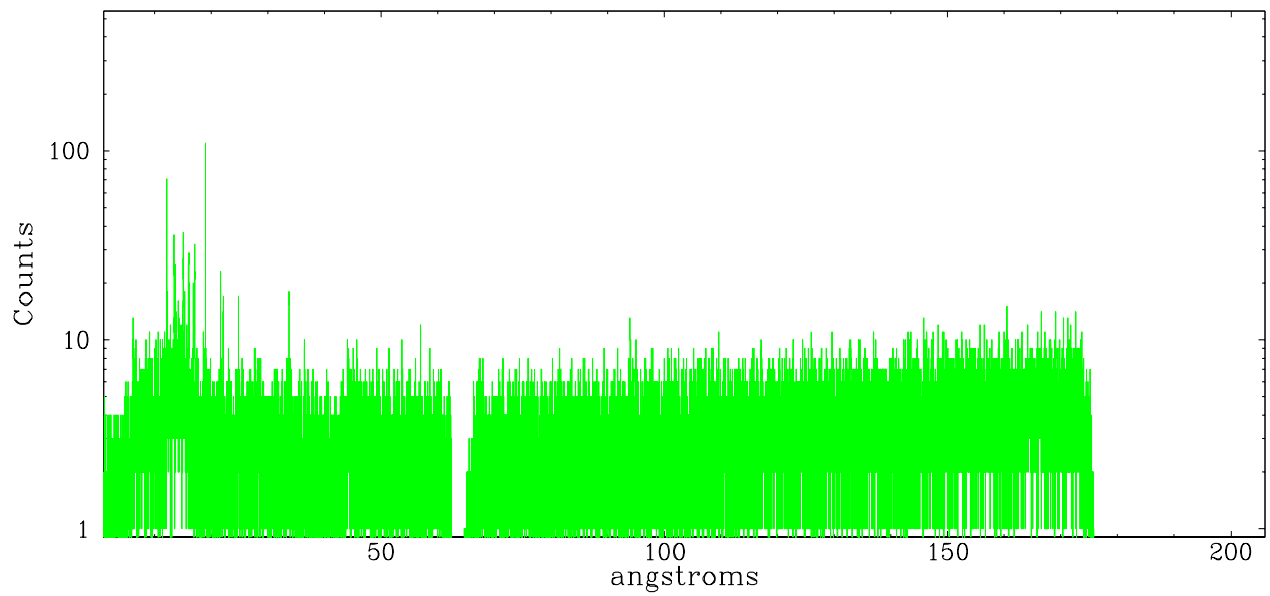


LETG Zero Order

leg order  $-1$



leg order  $+1$



## A Summary

### A.1 Status

V&V Scientist	Joy Nichols
V&V Date (YYYY-MM-DD)	2007.06.13
V&V Edition	1
V&V Disposition and Status	OK
V&V Charge Time	57.9

### A.2 Comments

The binary Castor A and B are in the field and have dispersed spectra.