

V&V Reference Report

L2 ASCDS Version : 10.3.3

Observation 52022 - L2 Version 1
Chandra X-Ray Center

L2 Processing Date : Mar 11 2015

Contents

1	Front	2
2	OBI	3
2.1	OBI	3
2.1.1	Images	3
2.1.2	Bias	3
2.1.3	Parameters	4
2.1.4	Events	4
2.2	Compared Parameters	5
2.3	Star Slots	6
2.4	FID Slots	6
A	Summary	7
A.1	Status	7
A.2	Comments	7

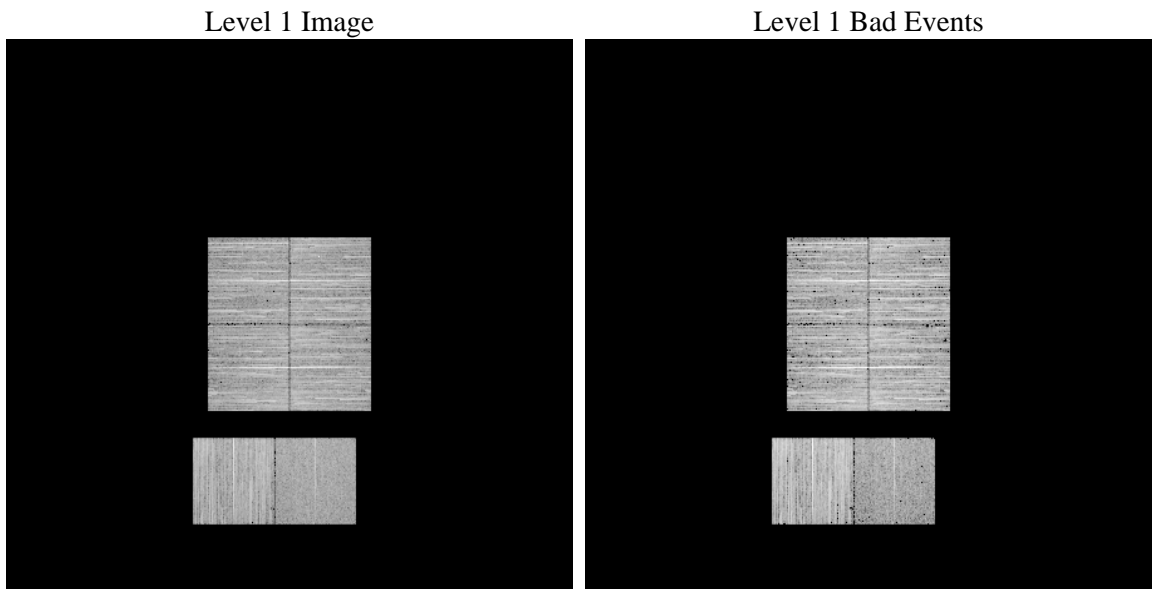
1 Front

seq_num	 	Sequence number
obs_id	52022	Observation id
title	ACIS-012367 diagnostics	Proposal title
observer	CHANDRA engineering request/realtime commanding	Principal investig
object	 	Source name
dtcycle	0	
cycle	P	events from which exps? Prim/Second/Both
ra_targ	0.0	Observer's specified target RA [deg]
dec_targ	0.0	Observer's specified target Dec [deg]
ra_nom	284.99042006894	Nominal RA [deg]
dec_nom	27.027607559586	Nominal Dec [deg]
roll_nom	74.496072748859	Nominal Roll [deg]
revision	1	Processing version of data
ontime	4601.0639958382	Sum of GTIs [s]
livetime	4542.8025530947	Livetime [s]
ontime0	4601.0229557753	Sum of GTIs [s]
ontime1	4600.9819158316	Sum of GTIs [s]
ontime2	4600.9408757687	Sum of GTIs [s]
ontime3	4601.1050357819	Sum of GTIs [s]
ontime6	4600.899835825	Sum of GTIs [s]
ontime7	4601.0639958382	Sum of GTIs [s]
l2events	87431	Number of level 2 events

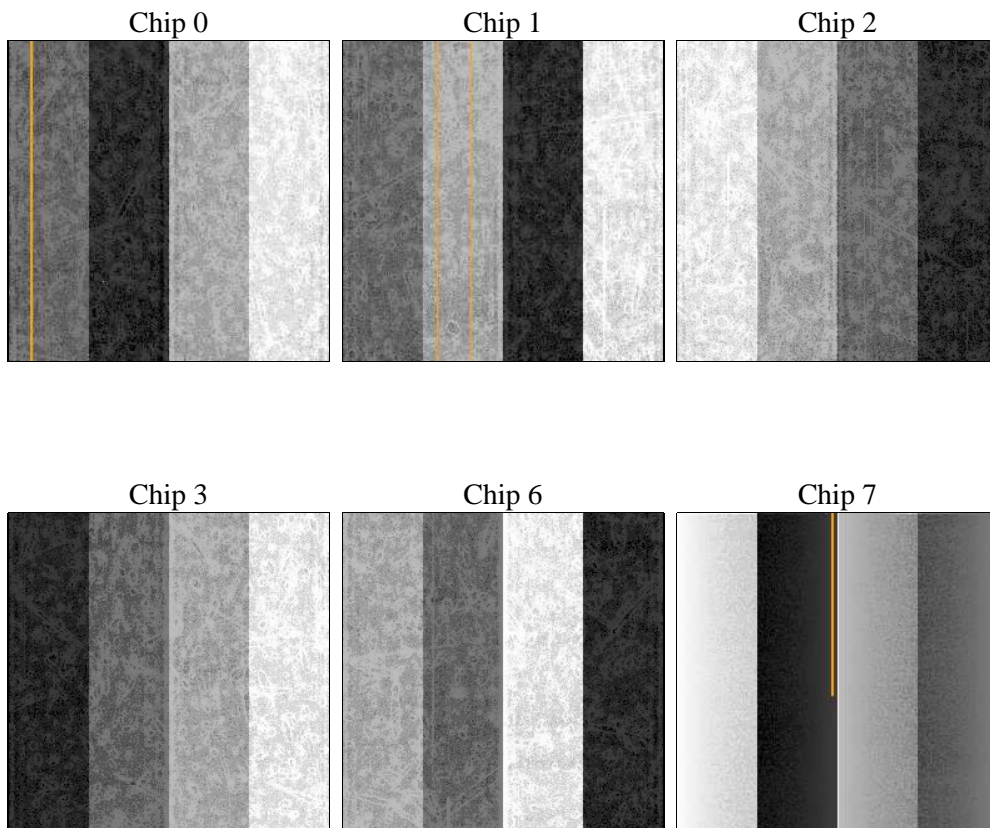
2 OBI

2.1 OBI

2.1.1 Images



2.1.2 Bias



2.1.3 Parameters

obi_num	1	Obi number	sched_exp_time	0.0	[s] Scheduled observation exposure time
ascdsver	10.3.3	Processing system revision	ontime	4601.0639958382	Sum of GTIs [s]
caldbver	4.6.7	 	ontime0	4601.0229557753	Sum of GTIs [s]
date	2015-03-11T16:20:11	Date and time of file creation	ontime1	4600.9819158316	Sum of GTIs [s]
revision	1	Processing version of data	ontime2	4600.9408757687	Sum of GTIs [s]
			ontime3	4601.1050357819	Sum of GTIs [s]
			ontime6	4600.899835825	Sum of GTIs [s]
			ontime7	4601.0639958382	Sum of GTIs [s]
			l1events	461435	Number of level 1 events

2.1.4 Events

	ccd 0	ccd 1	ccd 2	ccd 3	ccd 6	ccd 7		ccd 0	ccd 1	ccd 2	ccd 3	ccd 6	ccd 7
level 1 events	73046	80634	77452	79960	86889	63454	grade 0 events	6370	6208	6491	6721	6293	3371
rejected events	59943	67382	64523	66703	73443	36255		8%	7%	8%	8%	7%	5%
rejected %	82%	83%	83%	83%	84%	57%	grade 1 events	34	26	39	36	30	41
								0%	0%	0%	0%	0%	0%
							grade 2 events	2781	2985	2640	2645	3012	6835
								3%	3%	3%	3%	3%	10%
							grade 3 events	942	877	925	884	900	2110
								1%	1%	1%	1%	1%	3%
							grade 4 events	832	857	906	951	820	2064
								1%	1%	1%	1%	0%	3%
							grade 5 events	1500	1473	1440	1670	1570	3946
								2%	1%	1%	2%	1%	6%
							grade 6 events	2178	2325	1967	2056	2421	12819
								2%	2%	2%	2%	2%	20%
							grade 7 events	58409	65883	63044	64997	71843	32268
								79%	81%	81%	81%	82%	50%

2.2 Compared Parameters

Parameter	Planned	Actual	Parameter	Planned	Actual
Instrument	ACIS	ACIS	Obspar format version number	7	7
Detector	ACIS-012367	ACIS-012367	Obspar file type	PREDICTED	ACTUAL
Grating	NONE	NONE	Obspar update status	NONE	UPDATED
Data mode	FAINT	FAINT	Number of optional ACIS chips dropped	0	0
Observation mode	SECONDARY	SECONDARY	On-chip summing requested	N	N
[deg] Pointing RA	0	284.9904200689393	Subarray requested	NONE	NONE
[deg] Pointing Dec	0	27.02760755958556	Alternating exposures requested	N	N
[deg] Pointing Roll	0.0	74.49607274885854	[s] Primary exposure time	3.2	3.2
[mm] SIM focus pos	-1.429586	-1.428180813131781			
[mm] SIM defocus	0.1037507710433287	0.1051558262725154			
[mm] SIM translation stage pos	250.455976	250.466033080201			
[mm] SIM translation stage offset	0	-0.01005468664627074			
[s] Observation start time (MET)	542436282.67347	542436281.64847			
Observation start date	2015-03-11T04:44:43	2015-03-11T04:44:41			
[s] Observation end time (MET)	542442604.873824	542442603.84882			
Observation end date	2015-03-11T06:30:05	2015-03-11T06:30:03			
Read mode	TIMED	TIMED			

2.3 Star Slots

2.4 FID Slots

A Summary

A.1 Status

V&V Scientist	Jen Lauer
V&V Date (YYYY-MM-DD)	2015.03.11
V&V Edition	1
V&V Disposition and Status	OK
V&V Charge Time	4.6010639958382

A.2 Comments