

V&V Reference Report

L2 ASCDS Version : 10.3.3

Observation 51942 - L2 Version 1
Chandra X-Ray Center

L2 Processing Date : Apr 20 2015

Contents

1	Front	2
2	OBI	3
2.1	OBI	3
2.1.1	Images	3
2.1.2	Bias	3
2.1.3	Parameters	4
2.1.4	Events	4
2.2	Compared Parameters	5
2.3	Star Slots	6
2.4	FID Slots	6
A	Summary	7
A.1	Status	7
A.2	Comments	7

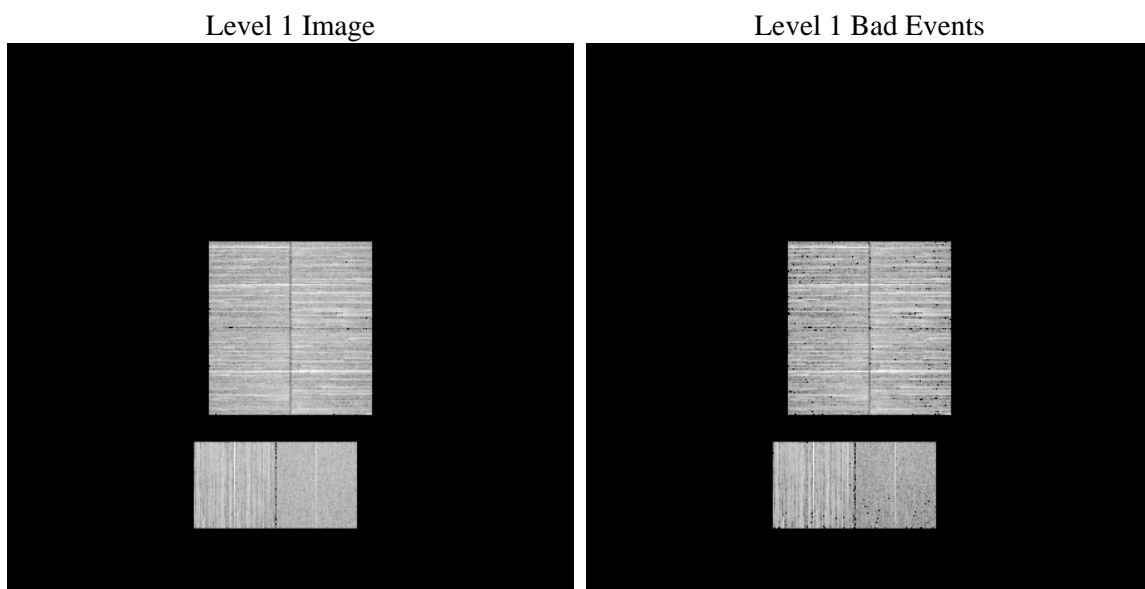
1 Front

seq_num	 	Sequence number
obs_id	51942	Observation id
title	ACIS-012367 diagnostics	Proposal title
observer	CHANDRA engineering request/realtime commanding	Principal investig
object	 	Source name
dtcycle	0	
cycle	P	events from which exps? Prim/Second/Both
ra_targ	0.0	Observer's specified target RA [deg]
dec_targ	0.0	Observer's specified target Dec [deg]
ra_nom	226.69539040421	Nominal RA [deg]
dec_nom	3.7188817059817	Nominal Dec [deg]
roll_nom	127.84457295919	Nominal Roll [deg]
revision	1	Processing version of data
ontime	5136.0000765324	Sum of GTIs [s]
livetime	5070.9649510353	Livetime [s]
ontime0	5132.7590962648	Sum of GTIs [s]
ontime1	5136.0000765324	Sum of GTIs [s]
ontime2	5136.0000765324	Sum of GTIs [s]
ontime3	5136.0000765324	Sum of GTIs [s]
ontime6	5136.0000765324	Sum of GTIs [s]
ontime7	5136.0000765324	Sum of GTIs [s]
l2events	105621	Number of level 2 events

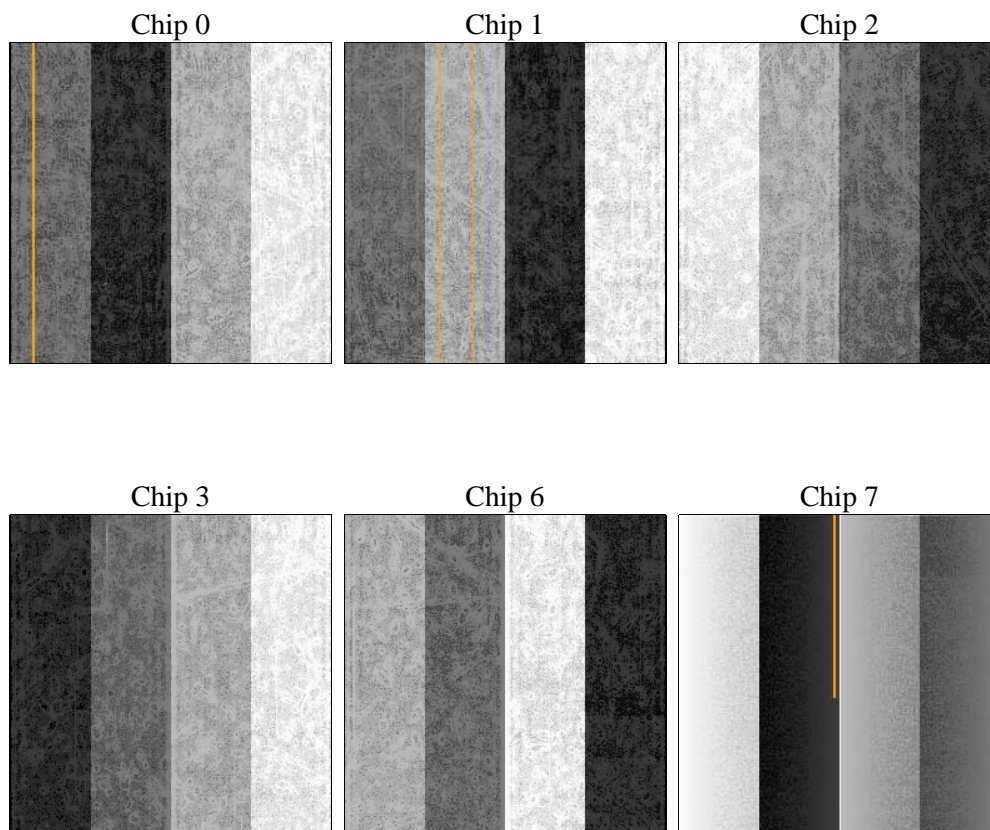
2 OBI

2.1 OBI

2.1.1 Images



2.1.2 Bias



2.1.3 Parameters

obi_num	0	Obi number	sched_exp_time	0.0	[s] Scheduled observation exposure time
ascdsver	10.3.3	Processing system revision	ontime	5136.0000765324	Sum of GTIs [s]
caldsver	4.6.7	 	ontime0	5132.7590962648	Sum of GTIs [s]
date	2015-04-20T06:49:10	Date and time of file creation	ontime1	5136.0000765324	Sum of GTIs [s]
revision	1	Processing version of data	ontime2	5136.0000765324	Sum of GTIs [s]
			ontime3	5136.0000765324	Sum of GTIs [s]
			ontime6	5136.0000765324	Sum of GTIs [s]
			ontime7	5136.0000765324	Sum of GTIs [s]
			l1events	503249	Number of level 1 events

2.1.4 Events

	ccd 0	ccd 1	ccd 2	ccd 3	ccd 6	ccd 7		ccd 0	ccd 1	ccd 2	ccd 3	ccd 6	ccd 7
level 1 events	79102	92274	82575	89521	88548	71229	grade 0 events	7668	7282	8018	7778	7911	4237
rejected events	63233	76233	66571	73592	71382	40110		9%	7%	9%	8%	8%	5%
rejected %	79%	82%	80%	82%	80%	56%	grade 1 events	36	27	44	51	33	64
								0%	0%	0%	0%	0%	0%
							grade 2 events	3284	3610	3118	3067	3603	7794
								4%	3%	3%	3%	4%	10%
							grade 3 events	1074	1054	1129	1143	1127	2433
								1%	1%	1%	1%	1%	3%
							grade 4 events	1030	1083	1096	1080	1154	2285
								1%	1%	1%	1%	1%	3%
							grade 5 events	1627	1785	1604	1781	1717	4210
								2%	1%	1%	1%	1%	5%
							grade 6 events	2813	3012	2643	2861	3371	14370
								3%	3%	3%	3%	3%	20%
							grade 7 events	61570	74421	64923	71760	69632	35836
								77%	80%	78%	80%	78%	50%

2.2 Compared Parameters

Parameter	Planned	Actual	Parameter	Planned	Actual
Instrument	ACIS	ACIS	Obspar format version number	7	7
Detector	ACIS-012367	ACIS-012367	Obspar file type	PREDICTED	ACTUAL
Grating	NONE	NONE	Obspar update status	NONE	UPDATED
Data mode	FAINT	FAINT	Number of optional ACIS chips dropped	0	0
Observation mode	SECONDARY	SECONDARY	On-chip summing requested	N	N
[deg] Pointing RA	0	226.6953904042098	Subarray requested	NONE	NONE
[deg] Pointing Dec	0	3.718881705981654	Alternating exposures requested	N	N
[deg] Pointing Roll	0.0	127.8445729591926	[s] Primary exposure time	3.2	3.2
[mm] SIM focus pos	-1.429586	-1.428180813131781			
[mm] SIM defocus	0.1037507710433287	0.1051558262725154			
[mm] SIM translation stage pos	250.455976	250.466033080201			
[mm] SIM translation stage offset	0	-0.01005468664627074			
[s] Observation start time (MET)	545861383.915168	545861382.89017			
Observation start date	2015-04-19T20:09:44	2015-04-19T20:09:42			
[s] Observation end time (MET)	545870254.265664	545870253.24066			
Observation end date	2015-04-19T22:37:34	2015-04-19T22:37:33			
Read mode	TIMED	TIMED			

2.3 Star Slots

2.4 FID Slots

A Summary

A.1 Status

V&V Scientist	Joy Nichols
V&V Date (YYYY-MM-DD)	2015.04.20
V&V Edition	1
V&V Disposition and Status	OK
V&V Charge Time	5.1360000765324

A.2 Comments