

# V&V Reference Report

## L2 ASCDS Version : 10.3.3

Observation 51921 - L2 Version 1  
Chandra X-Ray Center

L2 Processing Date : Apr 30 2015

## Contents

<b>1</b>	<b>Front</b>	<b>2</b>
<b>2</b>	<b>OBI</b>	<b>3</b>
2.1	OBI . . . . .	3
2.1.1	Images . . . . .	3
2.1.2	Bias . . . . .	3
2.1.3	Parameters . . . . .	4
2.1.4	Events . . . . .	4
2.2	Compared Parameters . . . . .	5
2.3	Star Slots . . . . .	6
2.4	FID Slots . . . . .	6
<b>A</b>	<b>Summary</b>	<b>7</b>
A.1	Status . . . . .	7
A.2	Comments . . . . .	7

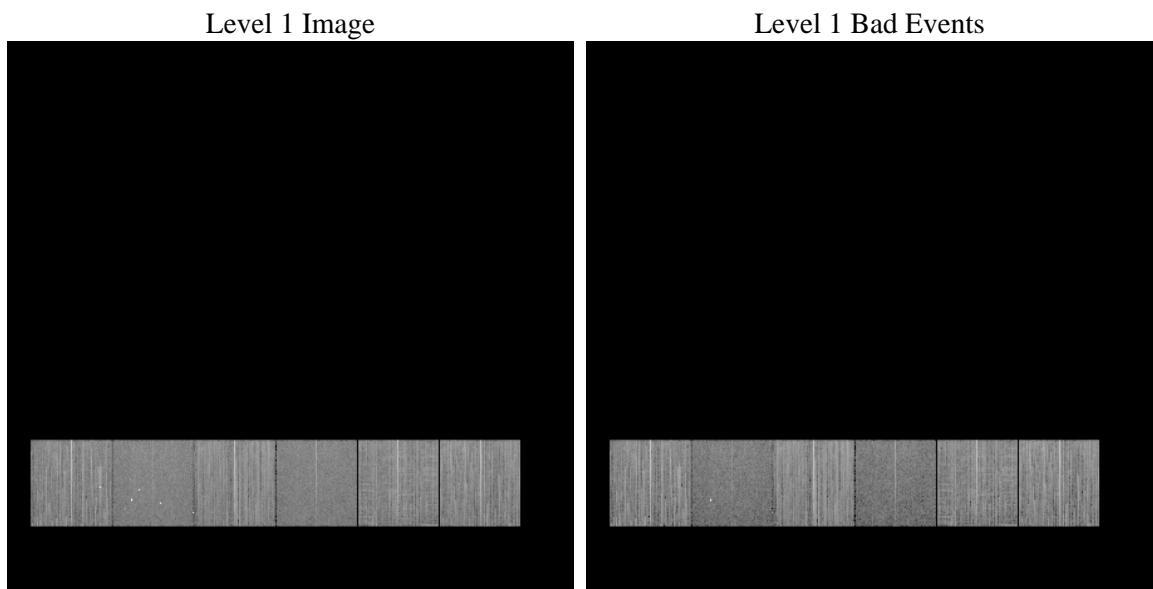
# 1 Front

seq_num	&#160	Sequence number
obs_id	51921	Observation id
title	ACIS-456789 diagnostics	Proposal title
observer	CHANDRA engineering request/realtime commanding	Principal investig
object	&#160	Source name
dtcycle	0	&#160
cycle	P	events from which exps? Prim/Second/Both
ra_targ	0.0	Observer's specified target RA [deg]
dec_targ	0.0	Observer's specified target Dec [deg]
ra_nom	218.9733141276	Nominal RA [deg]
dec_nom	9.8875986236022	Nominal Dec [deg]
roll_nom	174.69929482436	Nominal Roll [deg]
revision	1	Processing version of data
ontime	8245.8415899277	Sum of GTIs [s]
livetime	8141.4277786663	Livetime [s]
ontime4	8245.7184698582	Sum of GTIs [s]
ontime5	8245.8005498648	Sum of GTIs [s]
ontime6	8245.7595099211	Sum of GTIs [s]
ontime7	8245.8415899277	Sum of GTIs [s]
ontime8	8245.6774299145	Sum of GTIs [s]
ontime9	8245.8826298714	Sum of GTIs [s]
l2events	172014	Number of level 2 events

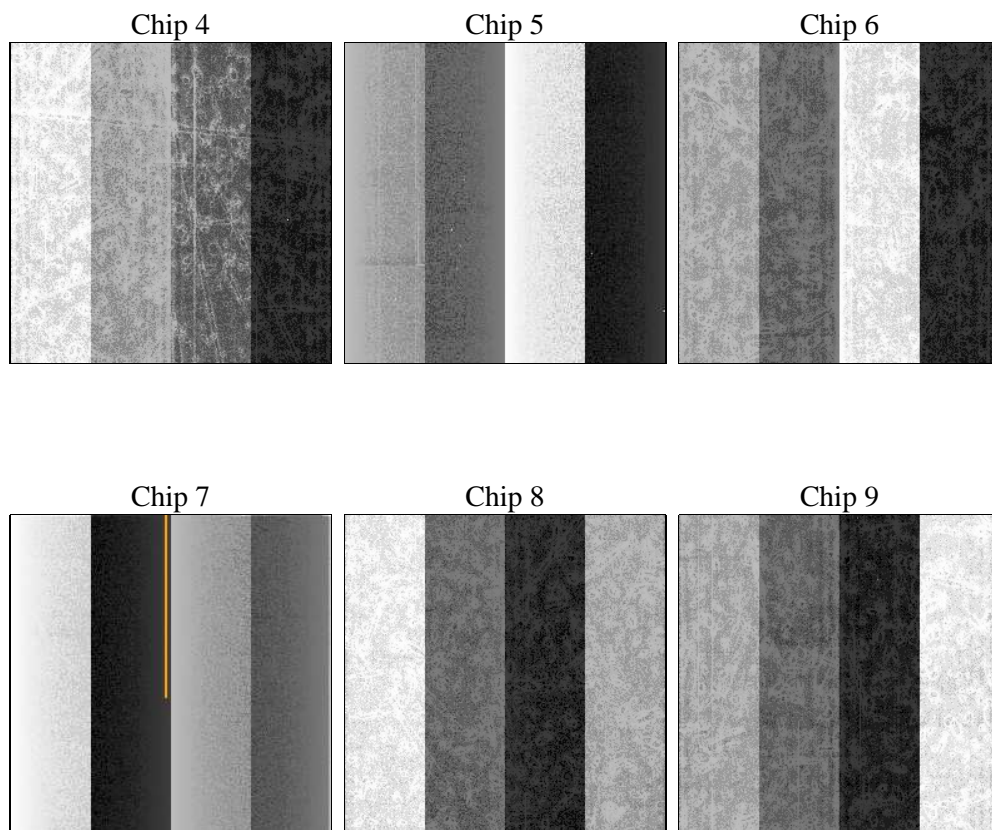
## 2 OBI

### 2.1 OBI

#### 2.1.1 Images



#### 2.1.2 Bias



### 2.1.3 Parameters

obi_num	0	Obi number	sched_exp_time	0.0	[s] Scheduled observation exposure time
ascdsver	10.3.3	Processing system revision	ontime	8245.8415899277	Sum of GTIs [s]
caldsver	4.6.7	&#160	ontime4	8245.7184698582	Sum of GTIs [s]
date	2015-04-30T17:28:17	Date and time of file creation	ontime5	8245.8005498648	Sum of GTIs [s]
revision	1	Processing version of data	ontime6	8245.7595099211	Sum of GTIs [s]
			ontime7	8245.8415899277	Sum of GTIs [s]
			ontime8	8245.6774299145	Sum of GTIs [s]
			ontime9	8245.8826298714	Sum of GTIs [s]
			l1events	842224	Number of level 1 events

### 2.1.4 Events

	ccd 4	ccd 5	ccd 6	ccd 7	ccd 8	ccd 9		ccd 4	ccd 5	ccd 6	ccd 7	ccd 8	ccd 9
level 1 events	147701	125470	157731	110643	147569	153110	grade 0 events	13547	8658	9398	5254	12418	10103
rejected events	123561	71250	135523	65621	117937	131417		9%	6%	5%	4%	8%	6%
rejected %	83%	56%	85%	59%	79%	85%	grade 1 events	109	209	47	77	60	50
								0%	0%	0%	0%	0%	0%
							grade 2 events	4508	17917	5937	11318	6805	4717
								3%	14%	3%	10%	4%	3%
							grade 3 events	1550	1438	1353	3198	2233	1468
								1%	1%	0%	2%	1%	0%
							grade 4 events	1539	1407	1265	3121	2093	1386
								1%	1%	0%	2%	1%	0%
							grade 5 events	3001	5175	2663	6420	3725	3093
								2%	4%	1%	5%	2%	2%
							grade 6 events	3005	24825	4263	22146	6097	4030
								2%	19%	2%	20%	4%	2%
							grade 7 events	120442	65841	132805	59109	114138	128263
								81%	52%	84%	53%	77%	83%

## 2.2 Compared Parameters

Parameter	Planned	Actual	Parameter	Planned	Actual
Instrument	ACIS	ACIS	Obspar format version number	7	7
Detector	ACIS-456789	ACIS-456789	Obspar file type	PREDICTED	ACTUAL
Grating	NONE	NONE	Obspar update status	NONE	UPDATED
Data mode	FAINT	FAINT	Number of optional ACIS chips dropped	0	0
Observation mode	SECONDARY	SECONDARY	On-chip summing requested	N	N
[deg] Pointing RA	0	218.9733141276011	Subarray requested	NONE	NONE
[deg] Pointing Dec	0	9.887598623602232	Alternating exposures requested	N	N
[deg] Pointing Roll	0.0	174.6992948243601	[s] Primary exposure time	3.2	3.2
[mm] SIM focus pos	-1.429586	-1.428180813131781			
[mm] SIM defocus	0.1037507710433287	0.1051558262725154			
[mm] SIM translation stage pos	250.455976	250.466033080201			
[mm] SIM translation stage offset	0	-0.01005468664627074			
[s] Observation start time (MET)	546736729.86429	546736728.83929			
Observation start date	2015-04-29T23:18:50	2015-04-29T23:18:48			
[s] Observation end time (MET)	546774734.816422	546774733.79142			
Observation end date	2015-04-30T09:52:15	2015-04-30T09:52:13			
Read mode	TIMED	TIMED			

## 2.3 Star Slots

## 2.4 FID Slots

## A Summary

### A.1 Status

V&V Scientist	Beth Sundheim
V&V Date (YYYY-MM-DD)	2015.04.30
V&V Edition	1
V&V Disposition and Status	OK
V&V Charge Time	8.2458415899277

### A.2 Comments