

V&V Reference Report

L2 ASCDS Version : 10.4

Observation 51817 - L2 Version 1
Chandra X-Ray Center

L2 Processing Date : Jun 22 2015

Contents

1	Front	2
2	OBI	3
2.1	OBI	3
2.1.1	Images	3
2.1.2	Bias	3
2.1.3	Parameters	4
2.1.4	Events	4
2.2	Compared Parameters	5
2.3	Star Slots	6
2.4	FID Slots	6
A	Summary	7
A.1	Status	7
A.2	Comments	7

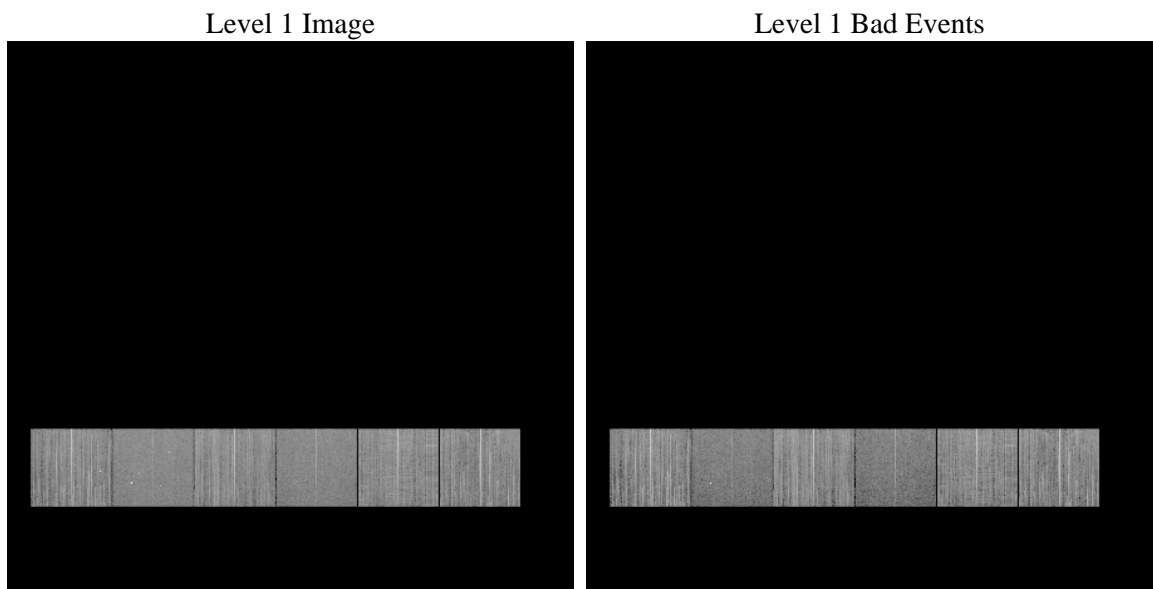
1 Front

seq_num	 	Sequence number
obs_id	51817	Observation id
title	ACIS-456789 diagnostics	Proposal title
observer	CHANDRA engineering request/realtime commanding	Principal investig
object	 	Source name
dtcycle	0	
cycle	P	events from which exps? Prim/Second/Both
ra_targ	0.0	Observer's specified target RA [deg]
dec_targ	0.0	Observer's specified target Dec [deg]
ra_nom	29.992003028284	Nominal RA [deg]
dec_nom	60.027208183095	Nominal Dec [deg]
roll_nom	76.483190049661	Nominal Roll [deg]
revision	1	Processing version of data
ontime	8438.5179699659	Sum of GTIs [s]
livetime	8331.6643743647	Livetime [s]
ontime4	8441.6001257896	Sum of GTIs [s]
ontime5	8438.5590100288	Sum of GTIs [s]
ontime6	8438.6000499725	Sum of GTIs [s]
ontime7	8438.5179699659	Sum of GTIs [s]
ontime8	8441.6001257896	Sum of GTIs [s]
ontime9	8438.477029562	Sum of GTIs [s]
l2events	191671	Number of level 2 events

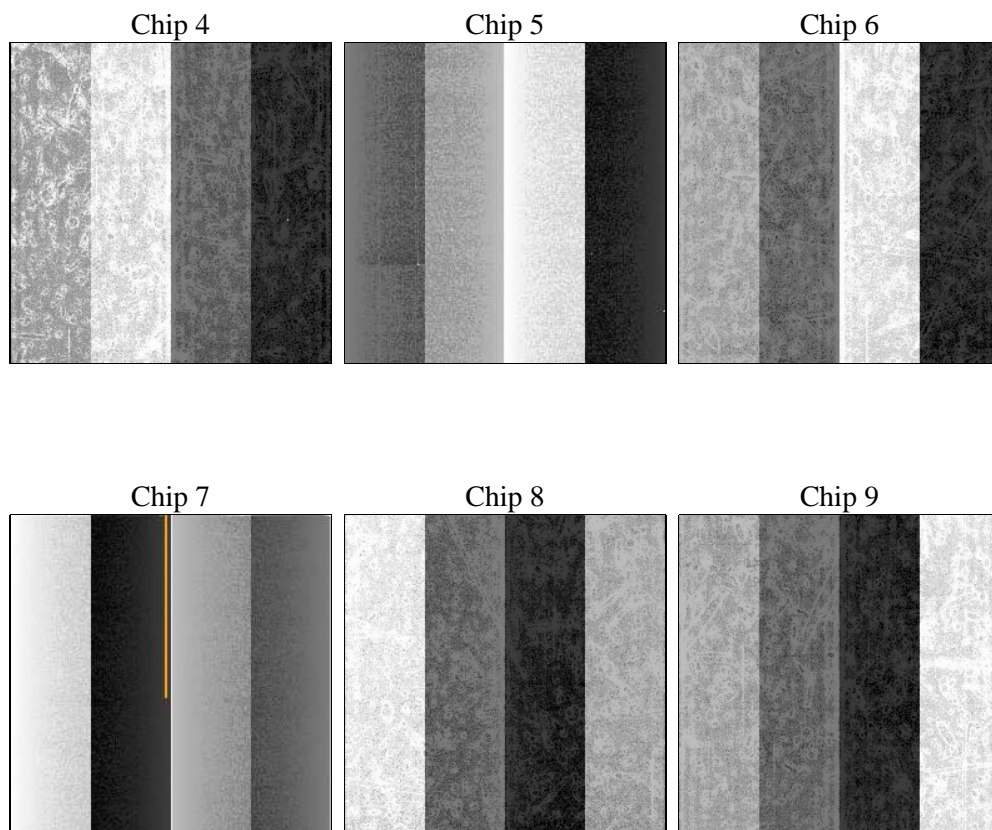
2 OBI

2.1 OBI

2.1.1 Images



2.1.2 Bias



2.1.3 Parameters

obi_num	1	Obi number	sched_exp_time	0.0	[s] Scheduled observation exposure time
ascdsver	10.4	Processing system revision	ontime	8438.5179699659	Sum of GTIs [s]
caldsver	4.6.7	 	ontime4	8441.6001257896	Sum of GTIs [s]
date	2015-06-23T03:33:45	Date and time of file creation	ontime5	8438.5590100288	Sum of GTIs [s]
revision	1	Processing version of data	ontime6	8438.6000499725	Sum of GTIs [s]
			ontime7	8438.5179699659	Sum of GTIs [s]
			ontime8	8441.6001257896	Sum of GTIs [s]
			ontime9	8438.477029562	Sum of GTIs [s]
			l1events	881429	Number of level 1 events

2.1.4 Events

	ccd 4	ccd 5	ccd 6	ccd 7	ccd 8	ccd 9		ccd 4	ccd 5	ccd 6	ccd 7	ccd 8	ccd 9
level 1 events	152473	136352	159386	122803	160336	150079	grade 0 events	13648	5538	11267	6476	14177	11298
rejected events	127498	78780	135366	71117	125824	126518		8%	4%	7%	5%	8%	7%
rejected %	83%	57%	84%	57%	78%	84%	grade 1 events	109	151	58	117	66	68
								0%	0%	0%	0%	0%	0%
							grade 2 events	4650	20814	5117	12656	7352	4695
								3%	15%	3%	10%	4%	3%
							grade 3 events	1685	1912	1662	4149	2909	1666
								1%	1%	1%	3%	1%	1%
							grade 4 events	1679	1843	1634	4049	2853	1682
								1%	1%	1%	3%	1%	1%
							grade 5 events	3261	6622	3290	7783	4203	3704
								2%	4%	2%	6%	2%	2%
							grade 6 events	3313	27465	4340	24356	7221	4220
								2%	20%	2%	19%	4%	2%
							grade 7 events	124128	72007	132018	63217	121555	122746
								81%	52%	82%	51%	75%	81%

2.2 Compared Parameters

Parameter	Planned	Actual	Parameter	Planned	Actual
Instrument	ACIS	ACIS	Obspar format version number	7	7
Detector	ACIS-456789	ACIS-456789	Obspar file type	PREDICTED	ACTUAL
Grating	NONE	NONE	Obspar update status	NONE	UPDATED
Data mode	FAINT	FAINT	Number of optional ACIS chips dropped	0	0
Observation mode	SECONDARY	SECONDARY	On-chip summing requested	N	N
[deg] Pointing RA	0	29.99200302828449	Subarray requested	NONE	NONE
[deg] Pointing Dec	0	60.0272081830946	Alternating exposures requested	N	N
[deg] Pointing Roll	0.0	76.48319004966056	[s] Primary exposure time	3.2	3.2
[mm] SIM focus pos	-1.429586	-1.428180813131781			
[mm] SIM defocus	0.1037507710433287	0.1051558262725154			
[mm] SIM translation stage pos	250.455976	250.466033080201			
[mm] SIM translation stage offset	0	-0.01005468664627074			
[s] Observation start time (MET)	551343691.022866	551343689.99787			
Observation start date	2015-06-22T07:01:31	2015-06-22T07:01:29			
[s] Observation end time (MET)	551355673.27354	551355672.24854			
Observation end date	2015-06-22T10:21:13	2015-06-22T10:21:12			
Read mode	TIMED	TIMED			

2.3 Star Slots

2.4 FID Slots

A Summary

A.1 Status

V&V Scientist	Jen Lauer
V&V Date (YYYY-MM-DD)	2015.06.23
V&V Edition	1
V&V Disposition and Status	OK
V&V Charge Time	8.4385179699659

A.2 Comments