

V&V Reference Report

L2 ASCDS Version : 10.4.1

Observation 51623 - L2 Version 1
Chandra X-Ray Center

L2 Processing Date : Sep 17 2015

Contents

1	Front	2
2	OBI	3
2.1	OBI	3
2.1.1	Images	3
2.1.2	Bias	3
2.1.3	Parameters	4
2.1.4	Events	4
2.2	Compared Parameters	5
2.3	Star Slots	6
2.4	FID Slots	6
A	Summary	7
A.1	Status	7
A.2	Comments	7

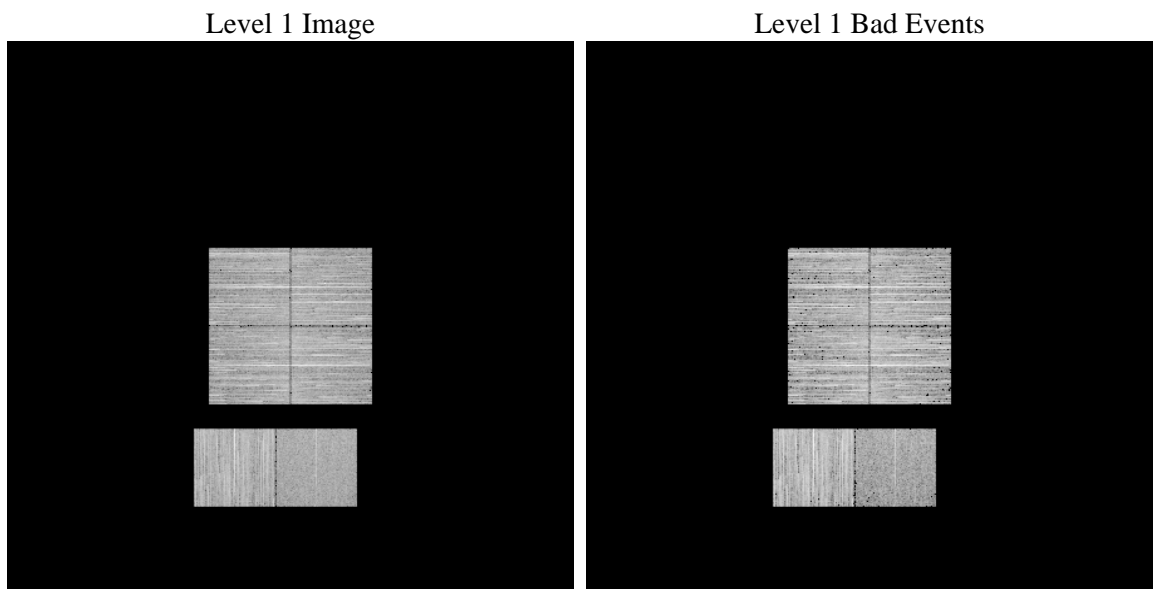
1 Front

seq_num	 	Sequence number
obs_id	51623	Observation id
title	ACIS-012367 diagnostics	Proposal title
observer	CHANDRA engineering request/realtime commanding	Principal investig
object	 	Source name
dtcycle	0	
cycle	P	events from which exps? Prim/Second/Both
ra_targ	0.0	Observer's specified target RA [deg]
dec_targ	0.0	Observer's specified target Dec [deg]
ra_nom	343.98364683152	Nominal RA [deg]
dec_nom	20.175583527939	Nominal Dec [deg]
roll_nom	205.1785500055	Nominal Roll [deg]
revision	1	Processing version of data
ontime	3791.7178337574	Sum of GTIs [s]
livetime	3743.704819448	Livetime [s]
ontime0	3791.6767936945	Sum of GTIs [s]
ontime1	3791.6357537508	Sum of GTIs [s]
ontime2	3791.5947136879	Sum of GTIs [s]
ontime3	3791.7588737011	Sum of GTIs [s]
ontime6	3788.312613368	Sum of GTIs [s]
ontime7	3791.7178337574	Sum of GTIs [s]
l2events	97609	Number of level 2 events

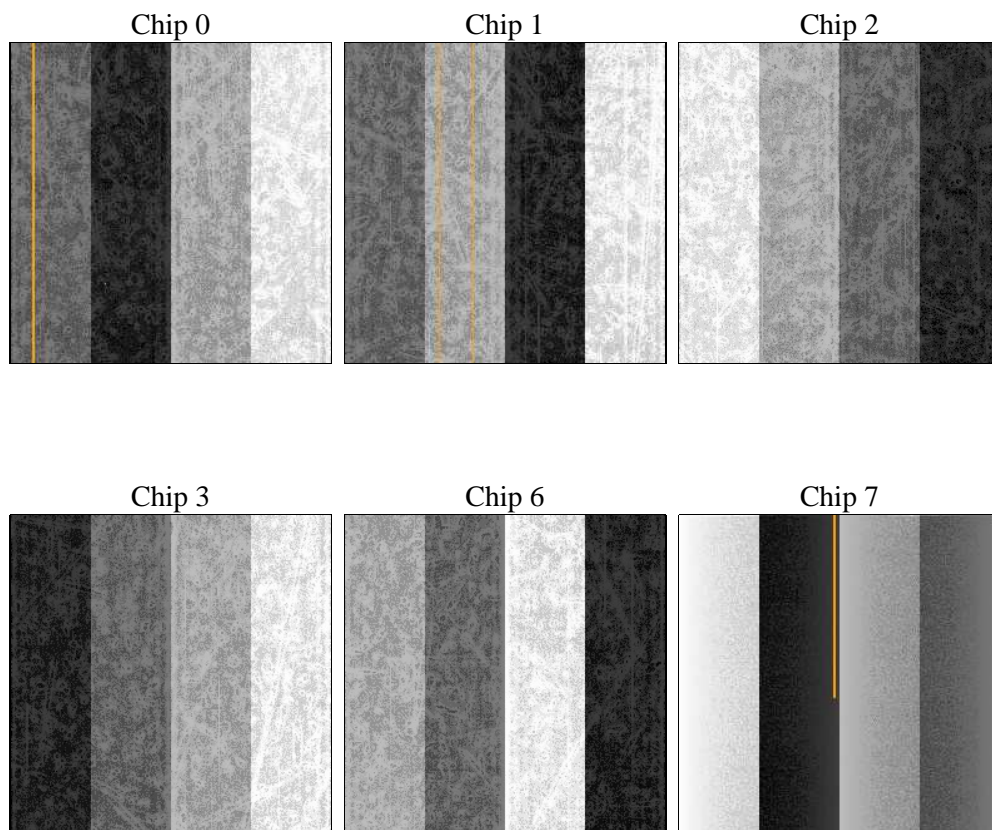
2 OBI

2.1 OBI

2.1.1 Images



2.1.2 Bias



2.1.3 Parameters

obi_num	0	Obi number	sched_exp_time	0.0	[s] Scheduled observation exposure time
ascdsver	10.4.1	Processing system revision	ontime	3791.7178337574	Sum of GTIs [s]
caldsver	4.6.8	 	ontime0	3791.6767936945	Sum of GTIs [s]
date	2015-09-17T16:26:57	Date and time of file creation	ontime1	3791.6357537508	Sum of GTIs [s]
revision	1	Processing version of data	ontime2	3791.5947136879	Sum of GTIs [s]
			ontime3	3791.7588737011	Sum of GTIs [s]
			ontime6	3788.312613368	Sum of GTIs [s]
			ontime7	3791.7178337574	Sum of GTIs [s]
			l1events	474649	Number of level 1 events

2.1.4 Events

	ccd 0	ccd 1	ccd 2	ccd 3	ccd 6	ccd 7		ccd 0	ccd 1	ccd 2	ccd 3	ccd 6	ccd 7
level 1 events	79837	80750	77408	80706	91806	64142	grade 0 events	6872	6415	7280	7660	6248	3854
rejected events	64823	65056	62549	65061	76268	37342		8%	7%	9%	9%	6%	6%
rejected %	81%	80%	80%	80%	83%	58%	grade 1 events	39	35	42	44	27	40
								0%	0%	0%	0%	0%	0%
							grade 2 events	3816	4933	3455	3734	4537	7467
								4%	6%	4%	4%	4%	11%
							grade 3 events	993	887	1022	1051	882	1853
								1%	1%	1%	1%	0%	2%
							grade 4 events	976	853	1007	1055	783	1857
								1%	1%	1%	1%	0%	2%
							grade 5 events	1337	1338	1228	1558	1409	3350
								1%	1%	1%	1%	1%	5%
							grade 6 events	3258	3465	2942	3120	4016	13303
								4%	4%	3%	3%	4%	20%
							grade 7 events	62546	62824	60432	62484	73904	32418
								78%	77%	78%	77%	80%	50%

2.2 Compared Parameters

Parameter	Planned	Actual
Instrument	ACIS	ACIS
Detector	ACIS-012367	ACIS-012367
Grating	NONE	NONE
Data mode	FAINT	FAINT
Observation mode	SECONDARY	SECONDARY
[deg] Pointing RA	0	343.9836468315212
[deg] Pointing Dec	0	20.17558352793914
[deg] Pointing Roll	0.0	205.1785500054972
SIM focus pos (mm)	-0.68282252473119	-0.68282252473119
[mm] SIM defocus	0.8505140384245534	0.8505140384245534
SIM translation stage pos (mm)	250.4660330802	250.4660330802
[mm] SIM translation stage offset	-0.01005726120527584	-0.01005726120527584
[s] Observation start time (MET)	558848444.1955709	558848444.1955709
Observation start date	2015-09-17T03:40:44	2015-09-17T03:40:44
[s] Observation end time (MET)	558853728.92704	558853728.92704
Observation end date	2015-09-17T05:08:49	2015-09-17T05:08:48
Read mode	TIMED	TIMED

Parameter	Planned	Actual
Obspar format version number	7	7
Obspar file type	PREDICTED	ACTUAL
Obspar update status	OVERRIDE	OVERRIDE
Number of optional ACIS chips dropped	0	0
On-chip summing requested	N	N
Subarray requested	NONE	NONE
Alternating exposures requested	N	N
[s] Primary exposure time	3.2	3.2

2.3 Star Slots

2.4 FID Slots

A Summary

A.1 Status

V&V Scientist	Jen Lauer
V&V Date (YYYY-MM-DD)	2015.09.17
V&V Edition	1
V&V Disposition and Status	OK
V&V Charge Time	3.7917178337574

A.2 Comments