

# V&V Reference Report

## L2 ASCDS Version : 10.4.2.1

Observation 51604 - L2 Version 1  
Chandra X-Ray Center

L2 Processing Date : Sep 30 2015

## Contents

<b>1</b>	<b>Front</b>	<b>2</b>
<b>2</b>	<b>OBI</b>	<b>3</b>
2.1	OBI . . . . .	3
2.1.1	Images . . . . .	3
2.1.2	Bias . . . . .	3
2.1.3	Parameters . . . . .	4
2.1.4	Events . . . . .	4
2.2	Compared Parameters . . . . .	5
2.3	Star Slots . . . . .	6
2.4	FID Slots . . . . .	6
<b>A</b>	<b>Summary</b>	<b>7</b>
A.1	Status . . . . .	7
A.2	Comments . . . . .	7

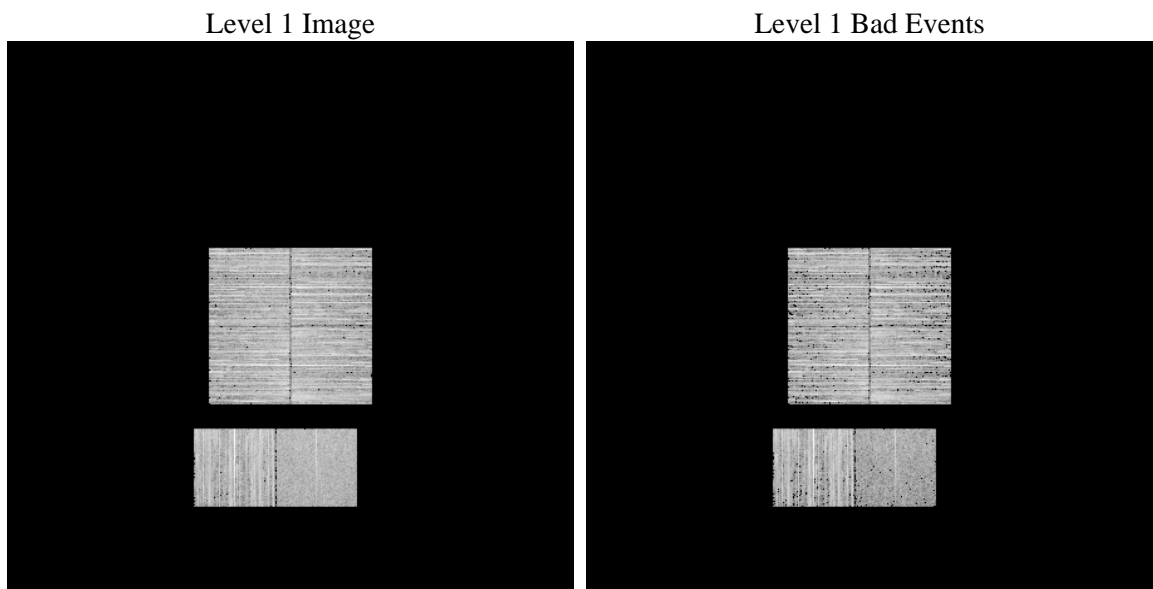
# 1 Front

seq_num	&#160	Sequence number
obs_id	51604	Observation id
title	ACIS-012367 diagnostics	Proposal title
observer	CHANDRA engineering request/realtime commanding	Principal investig
object	&#160	Source name
dtcycle	0	&#160
cycle	P	events from which exps? Prim/Second/Both
ra_targ	0.0	Observer's specified target RA [deg]
dec_targ	0.0	Observer's specified target Dec [deg]
ra_nom	14.216838846093	Nominal RA [deg]
dec_nom	-21.37560652026	Nominal Dec [deg]
roll_nom	24.306743843535	Nominal Roll [deg]
revision	1	Processing version of data
ontime	3420.1207659245	Sum of GTIs [s]
livetime	3376.8131374368	Livetime [s]
ontime0	3420.0797258615	Sum of GTIs [s]
ontime1	3420.0386859179	Sum of GTIs [s]
ontime2	3419.9976458549	Sum of GTIs [s]
ontime3	3420.1618058681	Sum of GTIs [s]
ontime6	3419.9566059113	Sum of GTIs [s]
ontime7	3420.1207659245	Sum of GTIs [s]
l2events	60451	Number of level 2 events

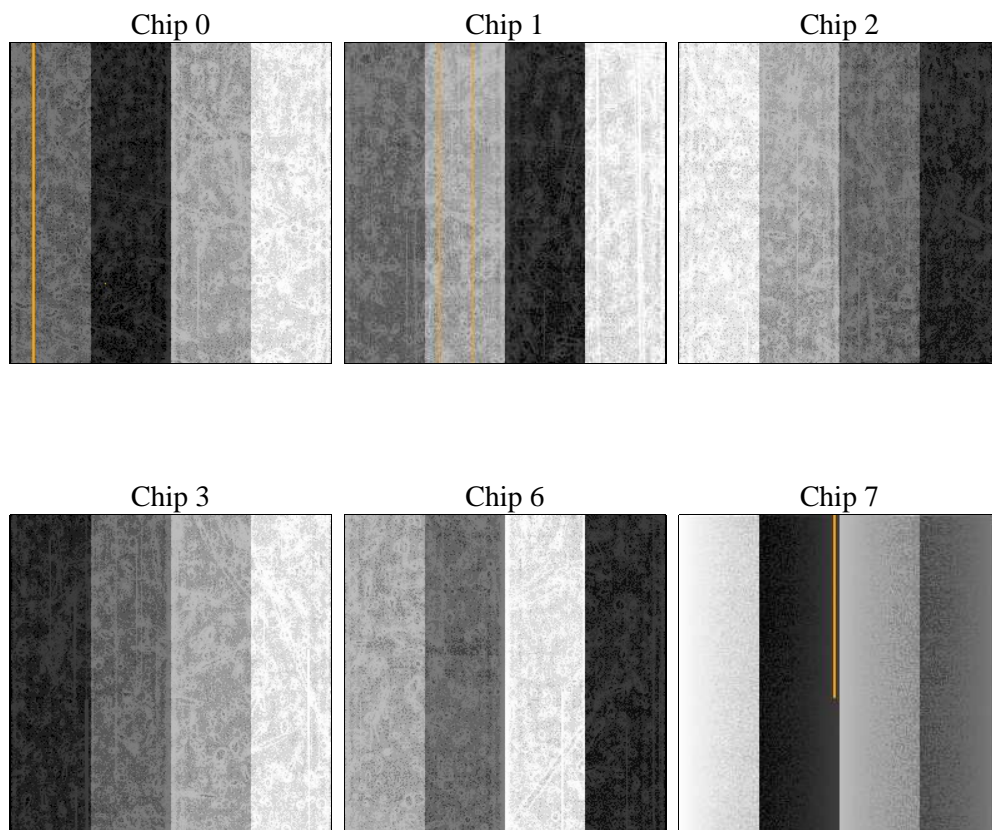
## 2 OBI

### 2.1 OBI

#### 2.1.1 Images



#### 2.1.2 Bias



### 2.1.3 Parameters

obi_num	1	Obi number	sched_exp_time	0.0	[s] Scheduled observation exposure time
ascdsver	10.4.2.1	Processing system revision	ontime	3420.1207659245	Sum of GTIs [s]
caldbver	4.6.10a	&#160	ontime0	3420.0797258615	Sum of GTIs [s]
date	2015-09-30T18:59:49	Date and time of file creation	ontime1	3420.0386859179	Sum of GTIs [s]
revision	1	Processing version of data	ontime2	3419.9976458549	Sum of GTIs [s]
			ontime3	3420.1618058681	Sum of GTIs [s]
			ontime6	3419.9566059113	Sum of GTIs [s]
			ontime7	3420.1207659245	Sum of GTIs [s]
			l1events	366090	Number of level 1 events

### 2.1.4 Events

	ccd 0	ccd 1	ccd 2	ccd 3	ccd 6	ccd 7		ccd 0	ccd 1	ccd 2	ccd 3	ccd 6	ccd 7
level 1 events	62128	60668	64008	63822	65037	50427	grade 0 events	4251	4087	4483	4470	4127	2351
rejected events	53296	51914	55136	54814	56109	30320		6%	6%	7%	7%	6%	4%
rejected %	85%	85%	86%	85%	86%	60%	grade 1 events	37	26	30	35	25	43
								0%	0%	0%	0%	0%	0%
							grade 2 events	1947	2018	1850	1797	1940	5054
								3%	3%	2%	2%	2%	10%
							grade 3 events	614	600	627	713	636	1590
								0%	0%	0%	1%	0%	3%
							grade 4 events	649	631	635	701	665	1495
								1%	1%	0%	1%	1%	2%
							grade 5 events	1315	1248	1196	1434	1315	3311
								2%	2%	1%	2%	2%	6%
							grade 6 events	1478	1550	1400	1442	1671	9891
								2%	2%	2%	2%	2%	19%
							grade 7 events	51837	50508	53787	53230	54658	26692
								83%	83%	84%	83%	84%	52%

## 2.2 Compared Parameters

Parameter	Planned	Actual
Instrument	ACIS	ACIS
Detector	ACIS-012367	ACIS-012367
Grating	NONE	NONE
Data mode	FAINT	FAINT
Observation mode	SECONDARY	SECONDARY
[deg] Pointing RA	0	14.21683884609338
[deg] Pointing Dec	0	-21.37560652025989
[deg] Pointing Roll	0.0	24.30674384353484
[mm] SIM focus pos	-1.429586	-0.7809083437167272
[mm] SIM defocus	0.1037507710433287	0.7524282956875696
[mm] SIM translation stage pos	250.455976	250.466033080201
[mm] SIM translation stage offset	0	-0.01005468664627074
[s] Observation start time (MET)	559801051.338431	559801050.31343
Observation start date	2015-09-28T04:17:31	2015-09-28T04:17:30
[s] Observation end time (MET)	559806229.638724	559806228.6137201
Observation end date	2015-09-28T05:43:50	2015-09-28T05:43:48
Read mode	TIMED	TIMED

Parameter	Planned	Actual
Obspar format version number	7	7
Obspar file type	PREDICTED	ACTUAL
Obspar update status	NONE	UPDATED
Number of optional ACIS chips dropped	0	0
On-chip summing requested	N	N
Subarray requested	NONE	NONE
Alternating exposures requested	N	N
[s] Primary exposure time	3.2	3.2

## 2.3 Star Slots

## 2.4 FID Slots

## A Summary

### A.1 Status

V&V Scientist	Jen Lauer
V&V Date (YYYY-MM-DD)	2015.10.01
V&V Edition	1
V&V Disposition and Status	OK
V&V Charge Time	3.4201207659245

### A.2 Comments