

V&V Reference Report

L2 ASCDS Version : 10.4.2.1

Observation 51520 - L2 Version 1
Chandra X-Ray Center

L2 Processing Date : Nov 7 2015

Contents

1	Front	2
2	OBI	3
2.1	OBI	3
2.1.1	Images	3
2.1.2	Bias	3
2.1.3	Parameters	4
2.1.4	Events	4
2.2	Compared Parameters	5
2.3	Star Slots	6
2.4	FID Slots	6
A	Summary	7
A.1	Status	7
A.2	Comments	7

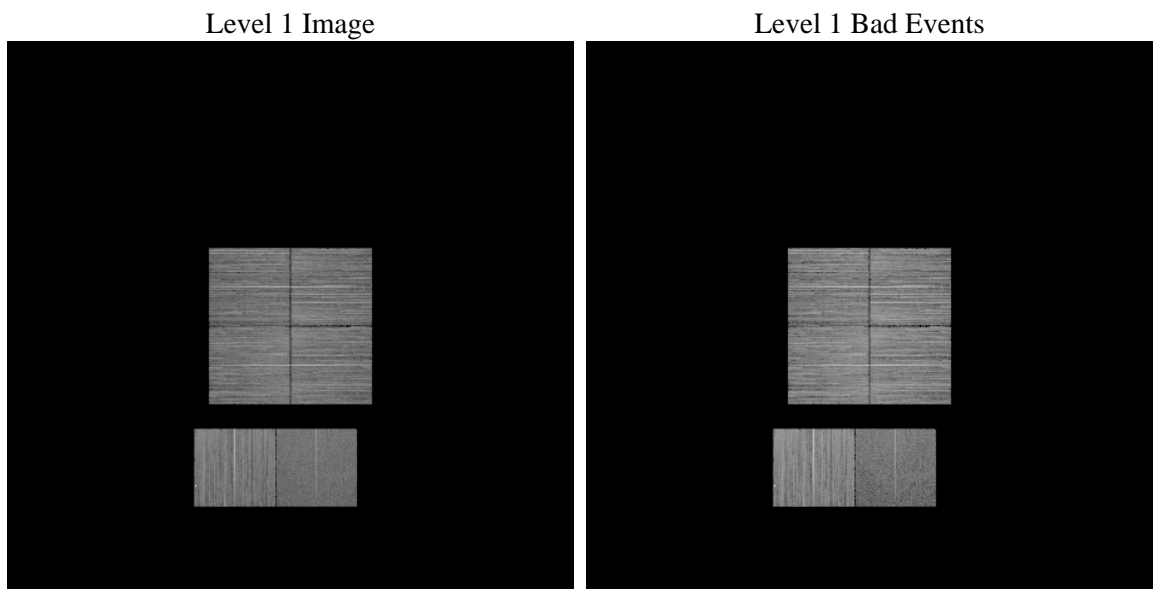
1 Front

seq_num	 	Sequence number
obs_id	51520	Observation id
title	ACIS-012367 diagnostics	Proposal title
observer	CHANDRA engineering request/realtime commanding	Principal investig
object	 	Source name
dtcycle	0	
cycle	P	events from which exps? Prim/Second/Both
ra_targ	0.0	Observer's specified target RA [deg]
dec_targ	0.0	Observer's specified target Dec [deg]
ra_nom	45.822972824425	Nominal RA [deg]
dec_nom	-7.7790222404806	Nominal Dec [deg]
roll_nom	10.435972475381	Nominal Roll [deg]
revision	1	Processing version of data
ontime	8464.0001261234	Sum of GTIs [s]
livetime	8356.8238601174	Livetime [s]
ontime0	8464.0001261234	Sum of GTIs [s]
ontime1	8464.0001261234	Sum of GTIs [s]
ontime2	8464.0001261234	Sum of GTIs [s]
ontime3	8460.7590758801	Sum of GTIs [s]
ontime6	8464.0001261234	Sum of GTIs [s]
ontime7	8464.0001261234	Sum of GTIs [s]
l2events	143783	Number of level 2 events

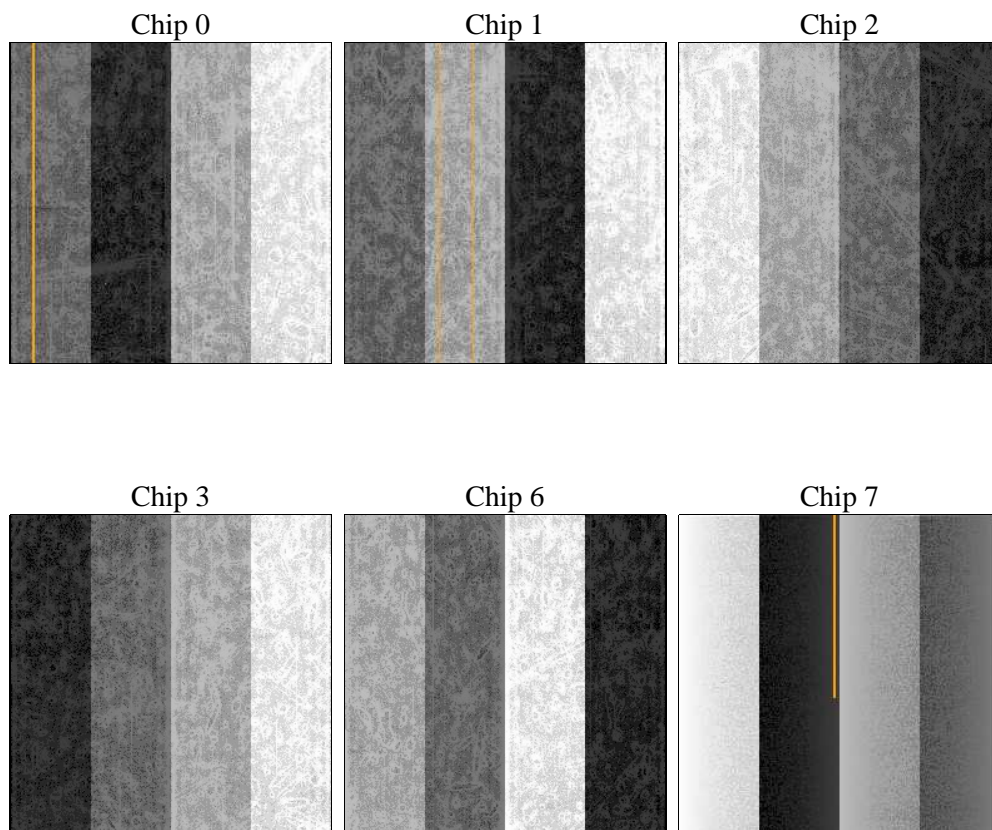
2 OBI

2.1 OBI

2.1.1 Images



2.1.2 Bias



2.1.3 Parameters

obi_num	0	Obi number	sched_exp_time	0.0	[s] Scheduled observation exposure time
ascdsver	10.4.2.1	Processing system revision	ontime	8464.0001261234	Sum of GTIs [s]
caldsver	4.6.10a	 	ontime0	8464.0001261234	Sum of GTIs [s]
date	2015-11-07T11:30:25	Date and time of file creation	ontime1	8464.0001261234	Sum of GTIs [s]
revision	1	Processing version of data	ontime2	8464.0001261234	Sum of GTIs [s]
			ontime3	8460.7590758801	Sum of GTIs [s]
			ontime6	8464.0001261234	Sum of GTIs [s]
			ontime7	8464.0001261234	Sum of GTIs [s]
			l1events	935028	Number of level 1 events

2.1.4 Events

	ccd 0	ccd 1	ccd 2	ccd 3	ccd 6	ccd 7		ccd 0	ccd 1	ccd 2	ccd 3	ccd 6	ccd 7
level 1 events	147539	162120	166948	163079	174066	121276	grade 0 events	9675	9102	10073	10119	9140	5203
rejected events	126891	140828	146261	141981	150001	73684		6%	5%	6%	6%	5%	4%
rejected %	86%	86%	87%	87%	86%	60%	grade 1 events	49	56	64	58	2593	82
								0%	0%	0%	0%	1%	0%
							grade 2 events	4702	5603	4418	4495	7996	11835
								3%	3%	2%	2%	4%	9%
							grade 3 events	1363	1319	1441	1520	1352	3299
								0%	0%	0%	0%	0%	2%
							grade 4 events	1384	1377	1482	1539	1344	3246
								0%	0%	0%	0%	0%	2%
							grade 5 events	2860	2744	2729	3229	2874	7266
								1%	1%	1%	1%	1%	5%
							grade 6 events	3524	3891	3273	3425	4233	24009
								2%	2%	1%	2%	2%	19%
							grade 7 events	123982	138028	143468	138694	144534	66336
								84%	85%	85%	85%	83%	54%

2.2 Compared Parameters

Parameter	Planned	Actual	Parameter	Planned	Actual
Instrument	ACIS	ACIS	Obspar format version number	7	7
Detector	ACIS-012367	ACIS-012367	Obspar file type	PREDICTED	ACTUAL
Grating	NONE	NONE	Obspar update status	NONE	UPDATED
Data mode	FAINT	FAINT	Number of optional ACIS chips dropped	0	0
Observation mode	SECONDARY	SECONDARY	On-chip summing requested	N	N
[deg] Pointing RA	0	45.82297282442503	Subarray requested	NONE	NONE
[deg] Pointing Dec	0	-7.779022240480558	Alternating exposures requested	N	N
[deg] Pointing Roll	0.0	10.43597247538072	[s] Primary exposure time	3.2	3.2
[mm] SIM focus pos	-1.429586	-0.6828225247311905			
[mm] SIM defocus	0.1037507710433287	0.8505141146731063			
[mm] SIM translation stage pos	250.455976	250.4635187648994			
[mm] SIM translation stage offset	0	-0.007540371344731511			
[s] Observation start time (MET)	563226792.182194	563226791.15719			
Observation start date	2015-11-06T19:53:12	2015-11-06T19:53:11			
[s] Observation end time (MET)	563238637.082864	563238636.05786			
Observation end date	2015-11-06T23:10:37	2015-11-06T23:10:36			
Read mode	TIMED	TIMED			

2.3 Star Slots

2.4 FID Slots

A Summary

A.1 Status

V&V Scientist	Joy Nichols
V&V Date (YYYY-MM-DD)	2015.11.09
V&V Edition	1
V&V Disposition and Status	OK
V&V Charge Time	8.4640001261234

A.2 Comments