

V&V Reference Report

L2 ASCDS Version : 10.2.1

Observation 52805 - L2 Version 1
Chandra X-Ray Center

L2 Processing Date : Apr 27 2014

Contents

1	Front	2
2	OBI	3
2.1	OBI	3
2.1.1	Images	3
2.1.2	Bias	3
2.1.3	Parameters	4
2.1.4	Events	4
2.2	Compared Parameters	5
2.3	Star Slots	6
2.4	FID Slots	6
A	Summary	7
A.1	Status	7
A.2	Comments	7

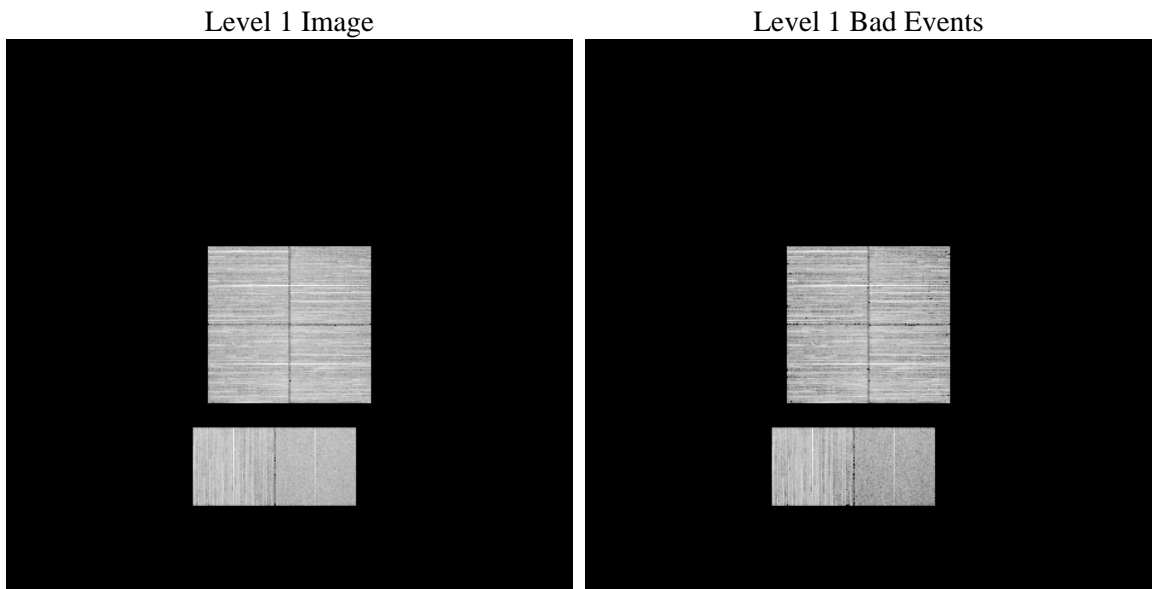
1 Front

seq_num	 	Sequence number
obs_id	52805	Observation id
title	ACIS-012367 diagnostics	Proposal title
observer	CHANDRA engineering request/realtime commanding	Principal investig
object	 	Source name
dtcycle	0	
cycle	P	events from which exps? Prim/Second/Both
ra_targ	0.0	Observer's specified target RA [deg]
dec_targ	0.0	Observer's specified target Dec [deg]
ra_nom	233.12507680036	Nominal RA [deg]
dec_nom	-31.867908685967	Nominal Dec [deg]
roll_nom	47.026597389691	Nominal Roll [deg]
revision	1	Processing version of data
ontime	7359.3902344108	Sum of GTIs [s]
livetime	7266.2012039699	Livetime [s]
ontime0	7359.3491944075	Sum of GTIs [s]
ontime1	7359.3081544042	Sum of GTIs [s]
ontime2	7356.0261635184	Sum of GTIs [s]
ontime3	7359.4312744141	Sum of GTIs [s]
ontime6	7359.2260743976	Sum of GTIs [s]
ontime7	7359.3902344108	Sum of GTIs [s]
l2events	156229	Number of level 2 events

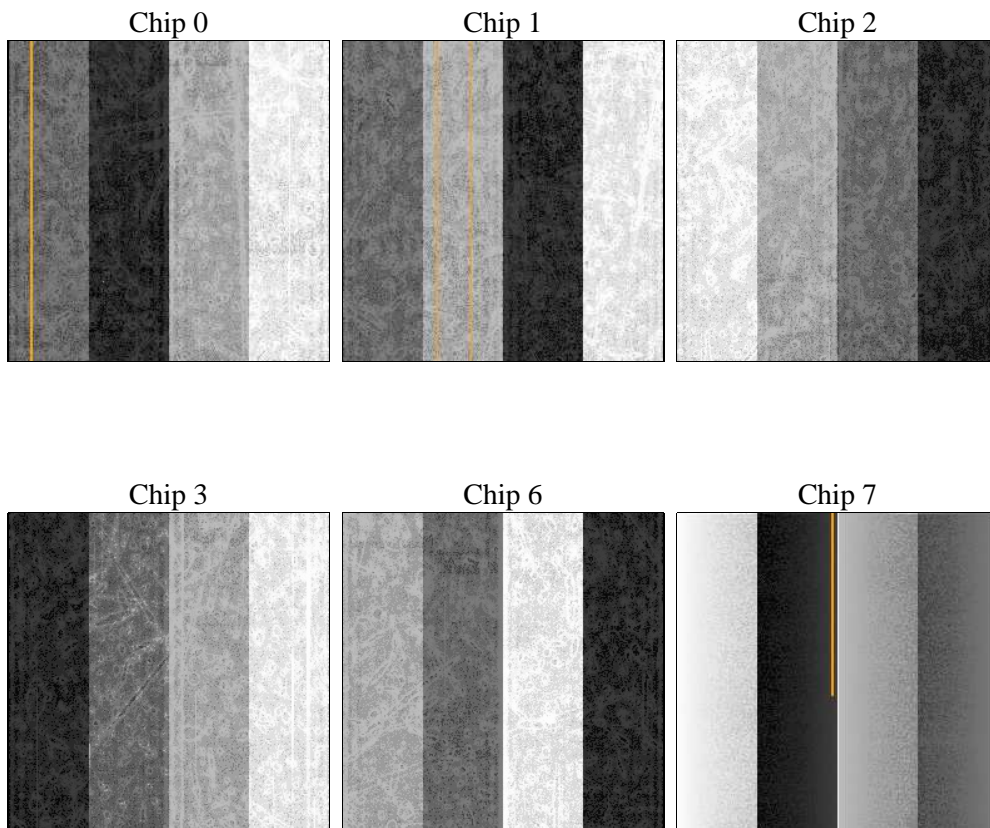
2 OBI

2.1 OBI

2.1.1 Images



2.1.2 Bias



2.1.3 Parameters

obi_num	0	Obi number	sched_exp_time	0.0	[s] Scheduled observation exposure time
ascdsver	10.2.1	Processing system revision	ontime	7359.3902344108	Sum of GTIs [s]
caldbver	4.6.1	 	ontime0	7359.3491944075	Sum of GTIs [s]
date	2014-04-28T01:58:42	Date and time of file creation	ontime1	7359.3081544042	Sum of GTIs [s]
revision	1	Processing version of data	ontime2	7356.0261635184	Sum of GTIs [s]
			ontime3	7359.4312744141	Sum of GTIs [s]
			ontime6	7359.2260743976	Sum of GTIs [s]
			ontime7	7359.3902344108	Sum of GTIs [s]
			l1events	726063	Number of level 1 events

2.1.4 Events

	ccd 0	ccd 1	ccd 2	ccd 3	ccd 6	ccd 7		ccd 0	ccd 1	ccd 2	ccd 3	ccd 6	ccd 7
level 1 events	121939	119333	123193	127589	132030	101979	grade 0 events	11867	11581	12333	12410	11986	6313
rejected events	98024	95545	99493	103553	107293	56366		9%	9%	10%	9%	9%	6%
rejected %	80%	80%	80%	81%	81%	55%	grade 1 events	67	49	53	91	47	69
								0%	0%	0%	0%	0%	0%
							grade 2 events	4835	4998	4508	4569	5035	11024
								3%	4%	3%	3%	3%	10%
							grade 3 events	1646	1671	1735	1707	1673	3694
								1%	1%	1%	1%	1%	3%
							grade 4 events	1682	1574	1537	1681	1705	3725
								1%	1%	1%	1%	1%	3%
							grade 5 events	2418	2425	2235	2712	2491	6087
								1%	2%	1%	2%	1%	5%
							grade 6 events	3885	3964	3587	3669	4338	20857
								3%	3%	2%	2%	3%	20%
							grade 7 events	95539	93071	97205	100750	104755	50210
								78%	77%	78%	78%	79%	49%

2.2 Compared Parameters

Parameter	Planned	Actual	Parameter	Planned	Actual
Instrument	ACIS	ACIS	Obspar format version number	7	7
Detector	ACIS-012367	ACIS-012367	Obspar file type	PREDICTED	ACTUAL
Grating	NONE	NONE	Obspar update status	NONE	UPDATED
Data mode	FAINT	FAINT	Number of optional ACIS chips dropped	0	0
Observation mode	SECONDARY	SECONDARY	On-chip summing requested	N	N
[deg] Pointing RA	0	233.1250768003591	Subarray requested	NONE	NONE
[deg] Pointing Dec	0	-31.86790868596689	Alternating exposures requested	N	N
[deg] Pointing Roll	0.0	47.02659738969059	[s] Primary exposure time	3.2	3.2
[mm] SIM focus pos	-1.429586	-1.428180813131781			
[mm] SIM defocus	0.1037507710433287	0.1051558262725154			
[mm] SIM translation stage pos	250.455976	250.466033080201			
[mm] SIM translation stage offset	0	-0.01005468664627074			
[s] Observation start time (MET)	515010774.349569	515010773.32457			
Observation start date	2014-04-27T18:32:54	2014-04-27T18:32:53			
[s] Observation end time (MET)	515020518.000106	515020516.97511			
Observation end date	2014-04-27T21:15:18	2014-04-27T21:15:16			
Read mode	TIMED	TIMED			

2.3 Star Slots

2.4 FID Slots

A Summary

A.1 Status

V&V Scientist	Joy Nichols
V&V Date (YYYY-MM-DD)	2014.04.28
V&V Edition	1
V&V Disposition and Status	OK
V&V Charge Time	7.3593902344108

A.2 Comments