

# V&V Reference Report

## L2 ASCDS Version : 10.2.2

Observation 52766 - L2 Version 1  
Chandra X-Ray Center

L2 Processing Date : May 18 2014

## Contents

<b>1</b>	<b>Front</b>	<b>2</b>
<b>2</b>	<b>OBI</b>	<b>3</b>
2.1	OBI . . . . .	3
2.1.1	Images . . . . .	3
2.1.2	Bias . . . . .	3
2.1.3	Parameters . . . . .	4
2.1.4	Events . . . . .	4
2.2	Compared Parameters . . . . .	5
2.3	Star Slots . . . . .	6
2.4	FID Slots . . . . .	6
<b>A</b>	<b>Summary</b>	<b>7</b>
A.1	Status . . . . .	7
A.2	Comments . . . . .	7

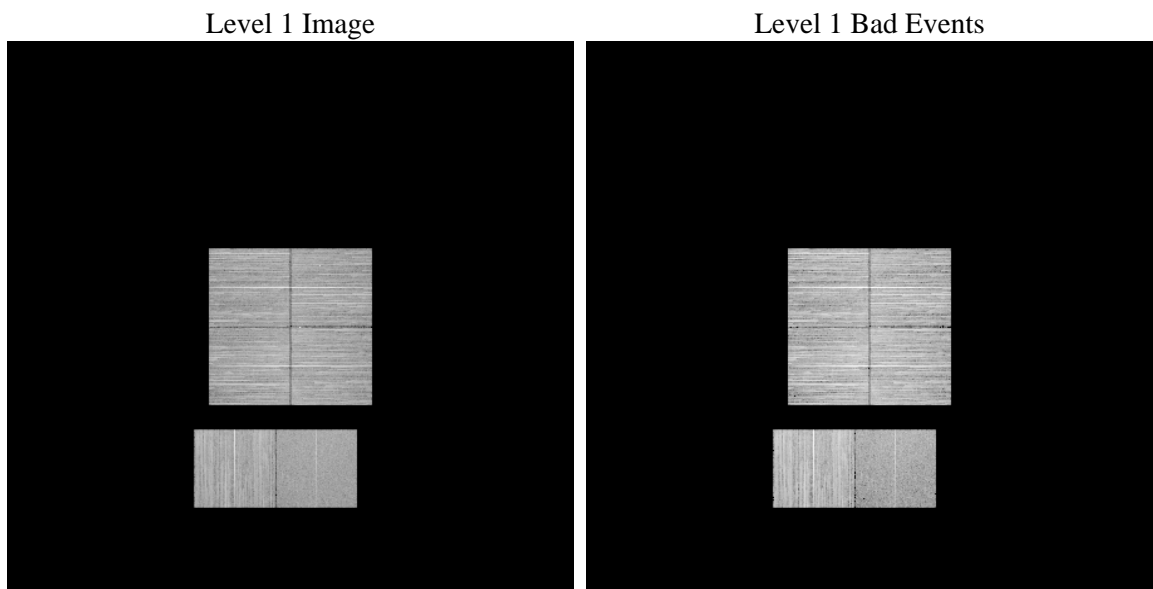
# 1 Front

seq_num	&#160	Sequence number
obs_id	52766	Observation id
title	ACIS-012367 diagnostics	Proposal title
observer	CHANDRA engineering request/realtime commanding	Principal investig
object	&#160	Source name
dtcycle	0	&#160
cycle	P	events from which exps? Prim/Second/Both
ra_targ	0.0	Observer's specified target RA [deg]
dec_targ	0.0	Observer's specified target Dec [deg]
ra_nom	219.81109605877	Nominal RA [deg]
dec_nom	-42.538680585945	Nominal Dec [deg]
roll_nom	334.07955473992	Nominal Roll [deg]
revision	1	Processing version of data
ontime	8265.1447114944	Sum of GTIs [s]
livetime	8160.4864724848	Livetime [s]
ontime0	8265.1036714911	Sum of GTIs [s]
ontime1	8265.0626314878	Sum of GTIs [s]
ontime2	8265.0215914845	Sum of GTIs [s]
ontime3	8265.1857514977	Sum of GTIs [s]
ontime6	8264.9805514812	Sum of GTIs [s]
ontime7	8265.1447114944	Sum of GTIs [s]
l2events	174375	Number of level 2 events

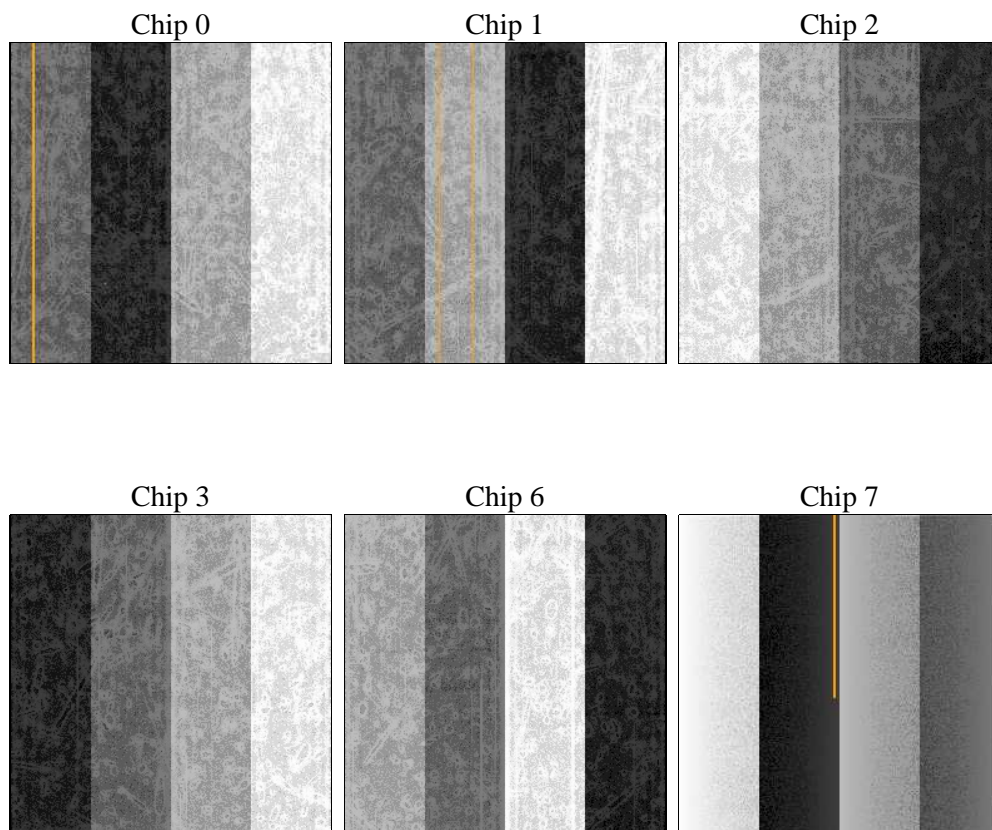
## 2 OBI

### 2.1 OBI

#### 2.1.1 Images



#### 2.1.2 Bias



### 2.1.3 Parameters

obi_num	0	Obi number	sched_exp_time	0.0	[s] Scheduled observation exposure time
ascdsver	10.2.2	Processing system revision	ontime	8265.1447114944	Sum of GTIs [s]
caldbver	4.6.1	&#160	ontime0	8265.1036714911	Sum of GTIs [s]
date	2014-05-18T21:09:37	Date and time of file creation	ontime1	8265.0626314878	Sum of GTIs [s]
revision	1	Processing version of data	ontime2	8265.0215914845	Sum of GTIs [s]
			ontime3	8265.1857514977	Sum of GTIs [s]
			ontime6	8264.9805514812	Sum of GTIs [s]
			ontime7	8265.1447114944	Sum of GTIs [s]
			l1events	868630	Number of level 1 events

### 2.1.4 Events

	ccd 0	ccd 1	ccd 2	ccd 3	ccd 6	ccd 7		ccd 0	ccd 1	ccd 2	ccd 3	ccd 6	ccd 7
level 1 events	144886	144180	155838	150706	153851	119169	grade 0 events	13028	12922	13888	13669	13381	7035
rejected events	118545	117314	129300	123758	126380	67304		8%	8%	8%	9%	8%	5%
rejected %	81%	81%	82%	82%	82%	56%	grade 1 events	77	56	72	97	68	92
								0%	0%	0%	0%	0%	0%
							grade 2 events	5463	5923	5195	5633	5720	12706
								3%	4%	3%	3%	3%	10%
							grade 3 events	1876	1792	1843	1833	1816	4168
								1%	1%	1%	1%	1%	3%
							grade 4 events	1793	1781	1812	1857	1764	3982
								1%	1%	1%	1%	1%	3%
							grade 5 events	2724	2773	2510	3170	2907	7229
								1%	1%	1%	2%	1%	6%
							grade 6 events	4249	4517	3874	4044	4855	24141
								2%	3%	2%	2%	3%	20%
							grade 7 events	115676	114416	126644	120403	123340	59816
								79%	79%	81%	79%	80%	50%

## 2.2 Compared Parameters

Parameter	Planned	Actual	Parameter	Planned	Actual
Instrument	ACIS	ACIS	Obspar format version number	7	7
Detector	ACIS-012367	ACIS-012367	Obspar file type	PREDICTED	ACTUAL
Grating	NONE	NONE	Obspar update status	NONE	UPDATED
Data mode	FAINT	FAINT	Number of optional ACIS chips dropped	0	0
Observation mode	SECONDARY	SECONDARY	On-chip summing requested	N	N
[deg] Pointing RA	0	219.8110960587657	Subarray requested	NONE	NONE
[deg] Pointing Dec	0	-42.538680585945	Alternating exposures requested	N	N
[deg] Pointing Roll	0.0	334.0795547399198	[s] Primary exposure time	3.2	3.2
[mm] SIM focus pos	-1.429586	-1.428180813131781			
[mm] SIM defocus	0.1037507710433287	0.1051558262725154			
[mm] SIM translation stage pos	250.455976	250.466033080201			
[mm] SIM translation stage offset	0	-0.01005468664627074			
[s] Observation start time (MET)	516803718.798566	516803717.77357			
Observation start date	2014-05-18T12:35:19	2014-05-18T12:35:17			
[s] Observation end time (MET)	516813450.149103	516813449.1241			
Observation end date	2014-05-18T15:17:30	2014-05-18T15:17:29			
Read mode	TIMED	TIMED			

## 2.3 Star Slots

## 2.4 FID Slots

## A Summary

### A.1 Status

V&V Scientist	Jen Lauer
V&V Date (YYYY-MM-DD)	2014.05.19
V&V Edition	1
V&V Disposition and Status	OK
V&V Charge Time	8.2651447114944

### A.2 Comments