

V&V Reference Report

L2 ASCDS Version : 10.2.4

Observation 52463 - L2 Version 1
Chandra X-Ray Center

L2 Processing Date : Sep 17 2014

Contents

1	Front	2
2	OBI	3
2.1	OBI	3
2.1.1	Images	3
2.1.2	Bias	3
2.1.3	Parameters	4
2.1.4	Events	4
2.2	Compared Parameters	5
2.3	Star Slots	6
2.4	FID Slots	6
A	Summary	7
A.1	Status	7
A.2	Comments	7

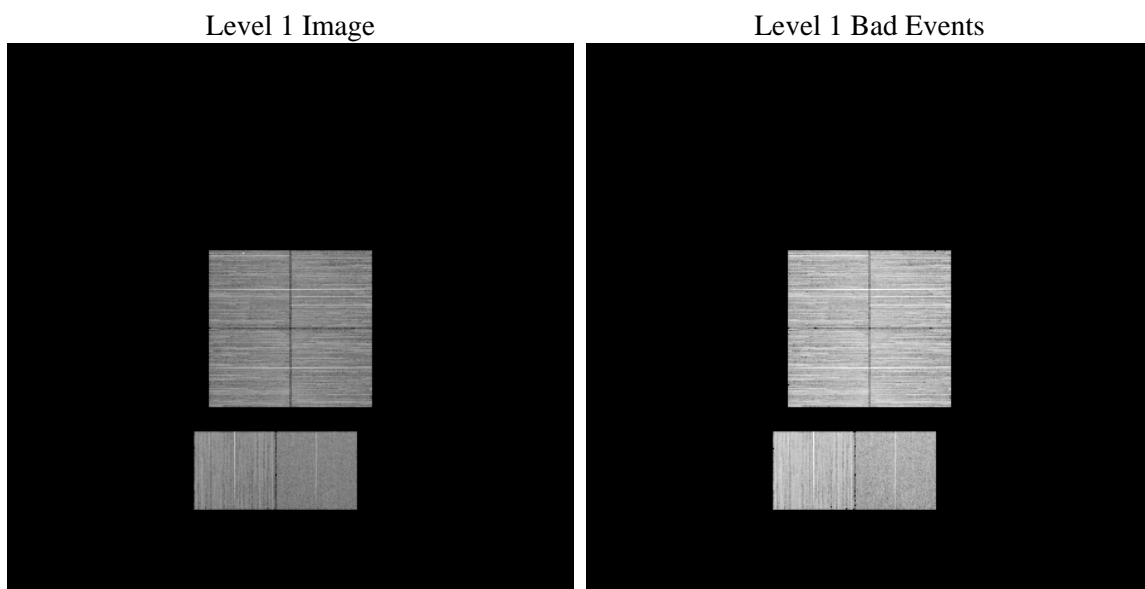
1 Front

seq_num	 	Sequence number
obs_id	52463	Observation id
title	ACIS-012367 diagnostics	Proposal title
observer	CHANDRA engineering request/realtime commanding	Principal investig
object	 	Source name
dtcycle	0	
cycle	P	events from which exps? Prim/Second/Both
ra_targ	0.0	Observer's specified target RA [deg]
dec_targ	0.0	Observer's specified target Dec [deg]
ra_nom	349.12461724892	Nominal RA [deg]
dec_nom	-28.836245322105	Nominal Dec [deg]
roll_nom	347.31562934304	Nominal Roll [deg]
revision	1	Processing version of data
ontime	8463.9999685287	Sum of GTIs [s]
livetime	8356.8237045183	Livetime [s]
ontime0	8463.9999685287	Sum of GTIs [s]
ontime1	8463.9999685287	Sum of GTIs [s]
ontime2	8463.9999685287	Sum of GTIs [s]
ontime3	8463.9999685287	Sum of GTIs [s]
ontime6	8463.9999685287	Sum of GTIs [s]
ontime7	8463.9999685287	Sum of GTIs [s]
l2events	167337	Number of level 2 events

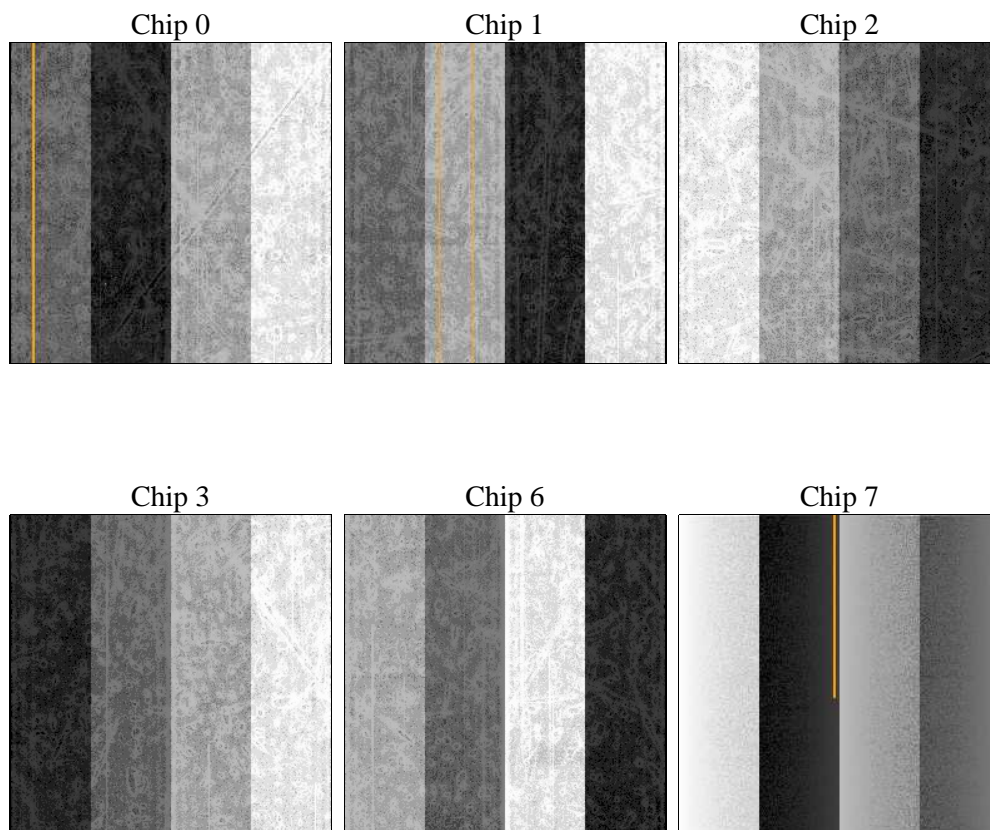
2 OBI

2.1 OBI

2.1.1 Images



2.1.2 Bias



2.1.3 Parameters

obi_num	0	Obi number	sched_exp_time	0.0	[s] Scheduled observation exposure time
ascdsver	10.2.4	Processing system revision	ontime	8463.9999685287	Sum of GTIs [s]
caldsver	4.6.3	 	ontime0	8463.9999685287	Sum of GTIs [s]
date	2014-09-18T02:09:57	Date and time of file creation	ontime1	8463.9999685287	Sum of GTIs [s]
revision	1	Processing version of data	ontime2	8463.9999685287	Sum of GTIs [s]
			ontime3	8463.9999685287	Sum of GTIs [s]
			ontime6	8463.9999685287	Sum of GTIs [s]
			ontime7	8463.9999685287	Sum of GTIs [s]
			l1events	907751	Number of level 1 events

2.1.4 Events

	ccd 0	ccd 1	ccd 2	ccd 3	ccd 6	ccd 7		ccd 0	ccd 1	ccd 2	ccd 3	ccd 6	ccd 7
level 1 events	150509	163759	157649	156577	158939	120318	grade 0 events	14775	11295	12980	12696	11589	6075
rejected events	122630	138576	132267	131206	133010	70162		9%	6%	8%	8%	7%	5%
rejected %	81%	84%	83%	83%	83%	58%	grade 1 events	66	53	76	83	49	96
								0%	0%	0%	0%	0%	0%
							grade 2 events	5557	6236	5210	5186	6419	12583
								3%	3%	3%	3%	4%	10%
							grade 3 events	1704	1606	1678	1715	1578	3684
								1%	0%	1%	1%	0%	3%
							grade 4 events	1647	1603	1664	1753	1568	3580
								1%	0%	1%	1%	0%	2%
							grade 5 events	2816	2816	2592	3049	2771	7020
								1%	1%	1%	1%	1%	5%
							grade 6 events	4207	4449	3856	4030	4779	24251
								2%	2%	2%	2%	3%	20%
							grade 7 events	119737	135701	129593	128065	130186	63029
								79%	82%	82%	81%	81%	52%

2.2 Compared Parameters

Parameter	Planned	Actual	Parameter	Planned	Actual
Instrument	ACIS	ACIS	Obspar format version number	7	7
Detector	ACIS-012367	ACIS-012367	Obspar file type	PREDICTED	ACTUAL
Grating	NONE	NONE	Obspar update status	NONE	UPDATED
Data mode	FAINT	FAINT	Number of optional ACIS chips dropped	0	0
Observation mode	SECONDARY	SECONDARY	On-chip summing requested	N	N
[deg] Pointing RA	0	349.1246172489218	Subarray requested	NONE	NONE
[deg] Pointing Dec	0	-28.83624532210494	Alternating exposures requested	N	N
[deg] Pointing Roll	0.0	347.3156293430357	[s] Primary exposure time	3.2	3.2
[mm] SIM focus pos	-1.429586	-1.428180813131781			
[mm] SIM defocus	0.1037507710433287	0.1051558262725154			
[mm] SIM translation stage pos	250.455976	250.466033080201			
[mm] SIM translation stage offset	0	-0.01005468664627074			
[s] Observation start time (MET)	527353087.032865	527353086.00786			
Observation start date	2014-09-17T14:58:07	2014-09-17T14:58:06			
[s] Observation end time (MET)	527364189.833481	527364188.80848			
Observation end date	2014-09-17T18:03:10	2014-09-17T18:03:08			
Read mode	TIMED	TIMED			

2.3 Star Slots

2.4 FID Slots

A Summary

A.1 Status

V&V Scientist	Jen Lauer
V&V Date (YYYY-MM-DD)	2014.09.18
V&V Edition	1
V&V Disposition and Status	OK
V&V Charge Time	8.4639999685287

A.2 Comments