

V&V Reference Report

L2 ASCDS Version : 8.4.3

Observation 54941 - L2 Version 1
Chandra X-Ray Center

L2 Processing Date : Jan 11 2012

Contents

1	Front	2
2	OBI	3
2.1	OBI	3
2.1.1	Images	3
2.1.2	Bias	3
2.1.3	Parameters	4
2.1.4	Events	4
2.2	Compared Parameters	5
2.3	Star Slots	6
2.4	FID Slots	6
A	Summary	7
A.1	Status	7
A.2	Comments	7

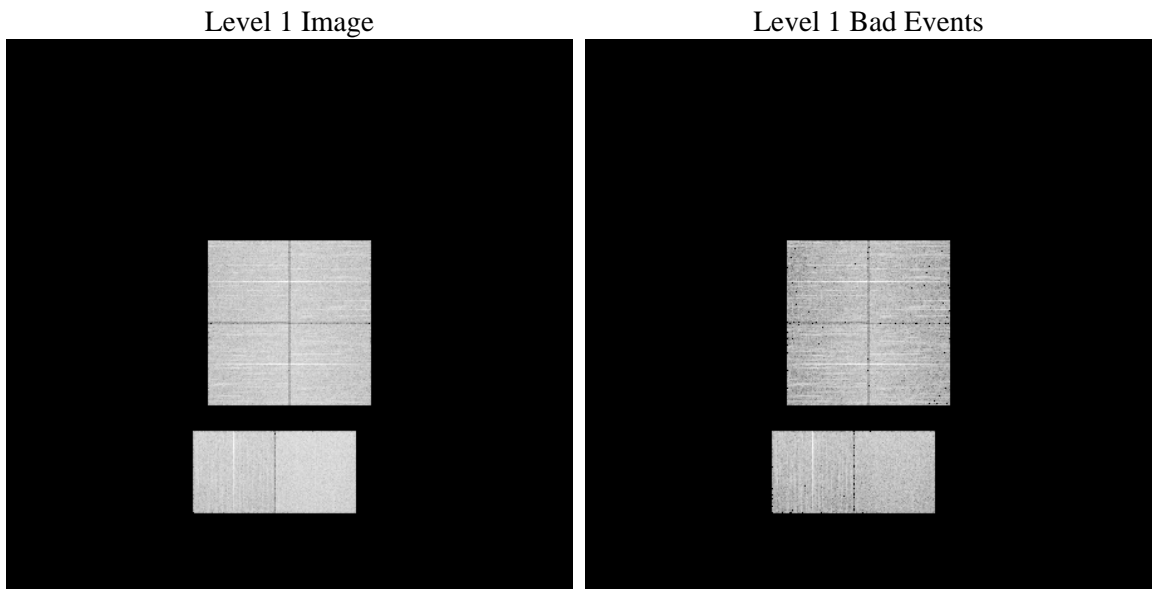
1 Front

seq_num	 	Sequence number
obs_id	54941	Observation id
title	ACIS-012367 diagnostics	Proposal title
observer	CHANDRA engineering request/realtime commanding	Principal investig
object	 	Source name
dtcycle	0	
cycle	P	events from which exps? Prim/Second/Both
ra_targ	0.0	Observer's specified target RA [deg]
dec_targ	0.0	Observer's specified target Dec [deg]
ra_nom	88.002465327655	Nominal RA [deg]
dec_nom	35.971302438046	Nominal Dec [deg]
roll_nom	240.92042625006	Nominal Roll [deg]
revision	1	Processing version of data
ontime	7090.8015403152	Sum of GTIs [s]
livetime	7001.0135416436	Livetime [s]
ontime0	7090.7605003119	Sum of GTIs [s]
ontime1	7090.7194603086	Sum of GTIs [s]
ontime2	7090.6784203053	Sum of GTIs [s]
ontime3	7090.8425803185	Sum of GTIs [s]
ontime6	7090.637380302	Sum of GTIs [s]
ontime7	7090.8015403152	Sum of GTIs [s]
l2events	241272	Number of level 2 events

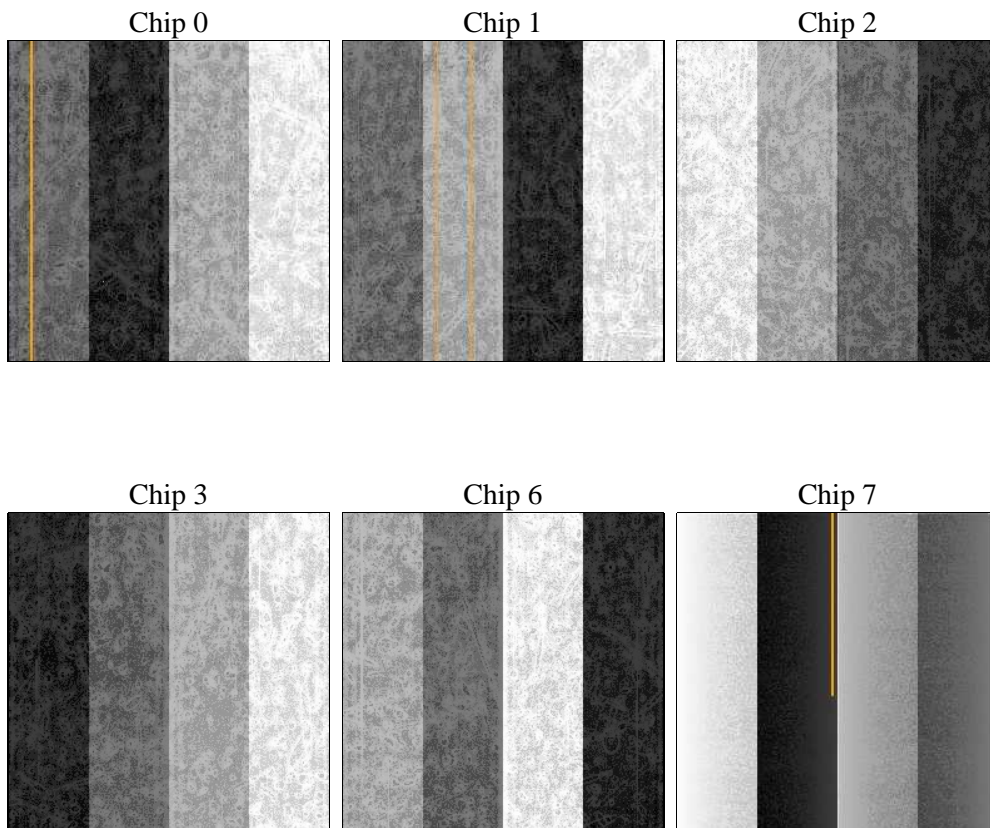
2 OBI

2.1 OBI

2.1.1 Images



2.1.2 Bias



2.1.3 Parameters

obi_num	0	Obi number	sched_exp_time	0.0	[s] Scheduled observation exposure time
ascdsver	8.4.3	Processing system revision	ontime	7090.8015403152	Sum of GTIs [s]
caldsver	4.4.7	 	ontime0	7090.7605003119	Sum of GTIs [s]
date	2012-01-12T00:18:00	Date and time of file creation	ontime1	7090.7194603086	Sum of GTIs [s]
revision	1	Processing version of data	ontime2	7090.6784203053	Sum of GTIs [s]
			ontime3	7090.8425803185	Sum of GTIs [s]
			ontime6	7090.637380302	Sum of GTIs [s]
			ontime7	7090.8015403152	Sum of GTIs [s]
			l1events	545523	Number of level 1 events

2.1.4 Events

	ccd 0	ccd 1	ccd 2	ccd 3	ccd 6	ccd 7		ccd 0	ccd 1	ccd 2	ccd 3	ccd 6	ccd 7
level 1 events	81985	84607	86478	87220	89255	115978	grade 0 events	19747	19362	20373	20314	19928	10618
rejected events	44028	46505	48543	49109	49995	52050		24%	22%	23%	23%	22%	9%
rejected %	53%	54%	56%	56%	56%	44%	grade 1 events	113	117	140	131	136	109
								0%	0%	0%	0%	0%	0%
							grade 2 events	7051	7473	6736	6921	7360	13862
								8%	8%	7%	7%	8%	11%
							grade 3 events	2558	2517	2662	2619	2607	5747
								3%	2%	3%	3%	2%	4%
							grade 4 events	2593	2637	2600	2689	2561	5702
								3%	3%	3%	3%	2%	4%
							grade 5 events	2978	3024	2784	3392	3227	8142
								3%	3%	3%	3%	3%	7%
							grade 6 events	6008	6113	5564	5568	6804	27999
								7%	7%	6%	6%	7%	24%
							grade 7 events	40937	43364	45619	45586	46632	43799
								49%	51%	52%	52%	52%	37%

2.2 Compared Parameters

Parameter	Planned	Actual	Parameter	Planned	Actual
Instrument	ACIS	ACIS	Obspar format version number	7	7
Detector	ACIS-012367	ACIS-012367	Obspar file type	PREDICTED	ACTUAL
Grating	NONE	NONE	Obspar update status	NONE	UPDATED
Data mode	FAINT	FAINT	Number of optional ACIS chips dropped	0	0
Observation mode	SECONDARY	SECONDARY	On-chip summing requested	N	N
[deg] Pointing RA	0	88.00246532765482	Subarray requested	NONE	NONE
[deg] Pointing Dec	0	35.97130243804613	Alternating exposures requested	N	N
[deg] Pointing Roll	0.0	240.9204262500589	[s] Primary exposure time	3.2	3.2
[mm] SIM focus pos	-1.429586	-1.428180813131781			
[mm] SIM defocus	0.1037507710433287	0.1051558262725154			
[mm] SIM translation stage pos	250.455976	250.466033080201			
[mm] SIM translation stage offset	0	-0.01005468664627074			
[s] Observation start time (MET)	442543101.312032	442543100.28703			
Observation start date	2012-01-10T00:38:21	2012-01-10T00:38:20			
[s] Observation end time (MET)	442560397.162946	442560396.13795			
Observation end date	2012-01-10T05:26:37	2012-01-10T05:26:36			
Read mode	TIMED	TIMED			

2.3 Star Slots

2.4 FID Slots

A Summary

A.1 Status

V&V Scientist	Jen Lauer
V&V Date (YYYY-MM-DD)	2012.01.12
V&V Edition	1
V&V Disposition and Status	OK
V&V Charge Time	7.0908015403152

A.2 Comments