

V&V Reference Report

L2 ASCDS Version : 8.4.3

Observation 54939 - L2 Version 1
Chandra X-Ray Center

L2 Processing Date : Jan 12 2012

Contents

1	Front	2
2	OBI	3
2.1	OBI	3
2.1.1	Images	3
2.1.2	Bias	3
2.1.3	Parameters	4
2.1.4	Events	4
2.2	Compared Parameters	5
2.3	Star Slots	6
2.4	FID Slots	6
A	Summary	7
A.1	Status	7
A.2	Comments	7

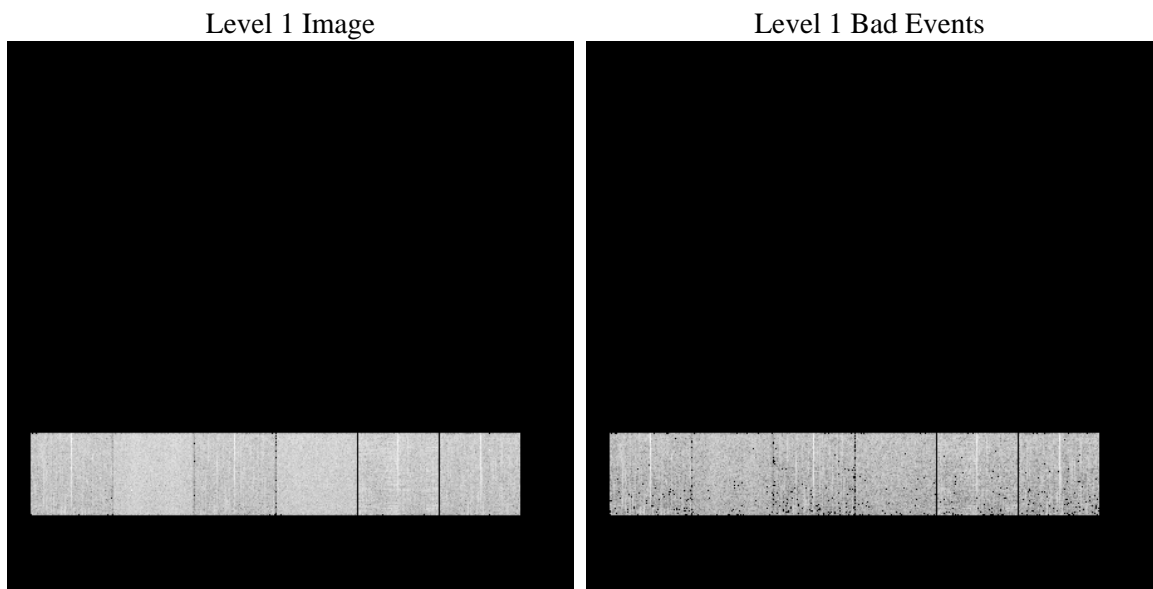
1 Front

seq_num	 	Sequence number
obs_id	54939	Observation id
title	ACIS-456789 diagnostics	Proposal title
observer	CHANDRA engineering request/realtime commanding	Principal investig
object	 	Source name
dtcycle	0	
cycle	P	events from which exps? Prim/Second/Both
ra_targ	0.0	Observer's specified target RA [deg]
dec_targ	0.0	Observer's specified target Dec [deg]
ra_nom	116.03070323661	Nominal RA [deg]
dec_nom	-4.9738765490648	Nominal Dec [deg]
roll_nom	10.317316310176	Nominal Roll [deg]
revision	1	Processing version of data
ontime	3759.9999860525	Sum of GTIs [s]
livetime	3712.3886022289	Livetime [s]
ontime4	3759.9999860525	Sum of GTIs [s]
ontime5	3759.9999860525	Sum of GTIs [s]
ontime6	3759.9999860525	Sum of GTIs [s]
ontime7	3759.9999860525	Sum of GTIs [s]
ontime8	3759.9999860525	Sum of GTIs [s]
ontime9	3759.9999860525	Sum of GTIs [s]
l2events	138221	Number of level 2 events

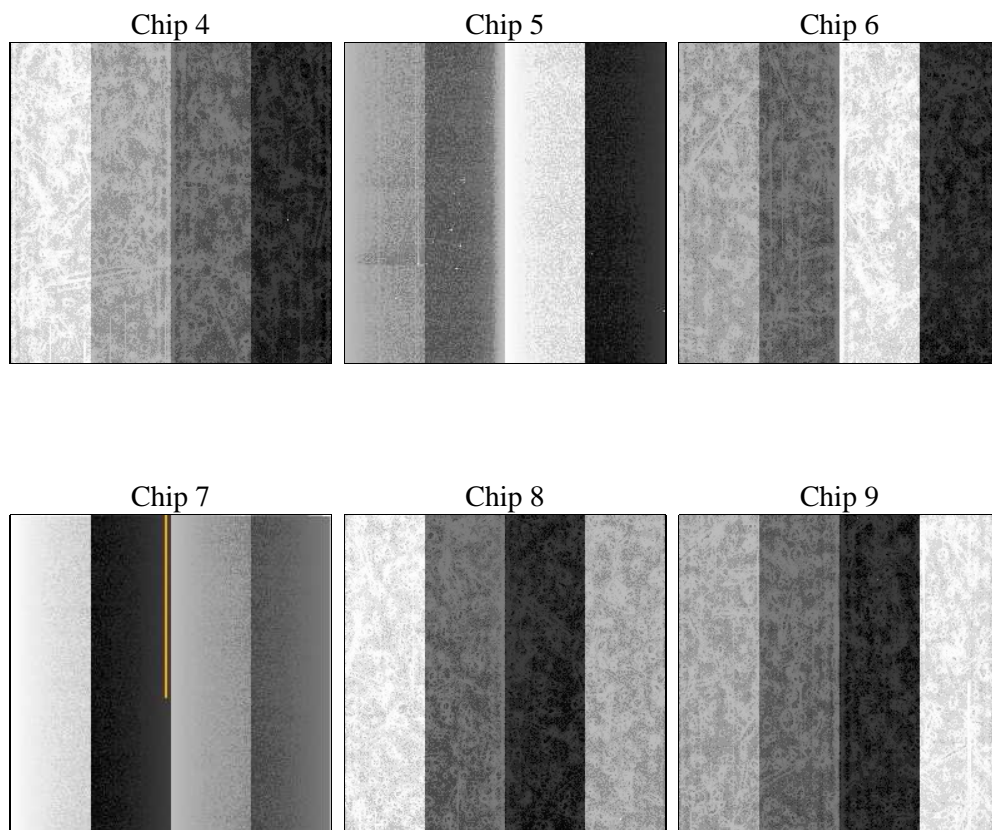
2 OBI

2.1 OBI

2.1.1 Images



2.1.2 Bias



2.1.3 Parameters

obi_num	0	Obi number	sched_exp_time	0.0	[s] Scheduled observation exposure time
ascdsver	8.4.3	Processing system revision	ontime	3759.9999860525	Sum of GTIs [s]
caldsver	4.4.7	 	ontime4	3759.9999860525	Sum of GTIs [s]
date	2012-01-12T00:08:46	Date and time of file creation	ontime5	3759.9999860525	Sum of GTIs [s]
revision	1	Processing version of data	ontime6	3759.9999860525	Sum of GTIs [s]
			ontime7	3759.9999860525	Sum of GTIs [s]
			ontime8	3759.9999860525	Sum of GTIs [s]
			ontime9	3759.9999860525	Sum of GTIs [s]
			l1events	323878	Number of level 1 events

2.1.4 Events

	ccd 4	ccd 5	ccd 6	ccd 7	ccd 8	ccd 9		ccd 4	ccd 5	ccd 6	ccd 7	ccd 8	ccd 9
level 1 events	48638	63571	47901	60531	55489	47748	grade 0 events	10871	2936	9709	5073	11464	9917
rejected events	29597	29202	27585	27545	30898	28407		22%	4%	20%	8%	20%	20%
rejected %	60%	45%	57%	45%	55%	59%	grade 1 events	99	84	67	53	71	65
								0%	0%	0%	0%	0%	0%
							grade 2 events	2928	12837	4482	7398	4751	3615
								6%	20%	9%	12%	8%	7%
							grade 3 events	1319	1088	1206	2599	1869	1276
								2%	1%	2%	4%	3%	2%
							grade 4 events	1368	1088	1266	2611	1847	1356
								2%	1%	2%	4%	3%	2%
							grade 5 events	1628	3127	1609	3822	2078	1831
								3%	4%	3%	6%	3%	3%
							grade 6 events	2572	16440	3672	15333	4684	3202
								5%	25%	7%	25%	8%	6%
							grade 7 events	27853	25971	25890	23642	28725	26486
								57%	40%	54%	39%	51%	55%

2.2 Compared Parameters

Parameter	Planned	Actual	Parameter	Planned	Actual
Instrument	ACIS	ACIS	Obspar format version number	7	7
Detector	ACIS-456789	ACIS-456789	Obspar file type	PREDICTED	ACTUAL
Grating	NONE	NONE	Obspar update status	NONE	UPDATED
Data mode	FAINT	FAINT	Number of optional ACIS chips dropped	0	0
Observation mode	SECONDARY	SECONDARY	On-chip summing requested	N	N
[deg] Pointing RA	0	116.0307032366133	Subarray requested	NONE	NONE
[deg] Pointing Dec	0	-4.97387654906481	Alternating exposures requested	N	N
[deg] Pointing Roll	0.0	10.31731631017554	[s] Primary exposure time	3.2	3.2
[mm] SIM focus pos	-1.429586	-1.428180813131781			
[mm] SIM defocus	0.1037507710433287	0.1051558262725154			
[mm] SIM translation stage pos	250.455976	250.466033080201			
[mm] SIM translation stage offset	0	-0.01005468664627074			
[s] Observation start time (MET)	442571559.413536	442571558.38854			
Observation start date	2012-01-10T08:32:39	2012-01-10T08:32:38			
[s] Observation end time (MET)	442578890.213924	442578889.18892			
Observation end date	2012-01-10T10:34:50	2012-01-10T10:34:49			
Read mode	TIMED	TIMED			

2.3 Star Slots

2.4 FID Slots

A Summary

A.1 Status

V&V Scientist	Jen Lauer
V&V Date (YYYY-MM-DD)	2012.01.12
V&V Edition	1
V&V Disposition and Status	OK
V&V Charge Time	3.7599999860525

A.2 Comments