

V&V Reference Report

L2 ASCDS Version : 8.4.3

Observation 54819 - L2 Version 1
Chandra X-Ray Center

L2 Processing Date : Mar 1 2012

Contents

1	Front	2
2	OBI	3
2.1	OBI	3
2.1.1	Images	3
2.1.2	Bias	3
2.1.3	Parameters	4
2.1.4	Events	4
2.2	Compared Parameters	5
2.3	Star Slots	6
2.4	FID Slots	6
A	Summary	7
A.1	Status	7
A.2	Comments	7

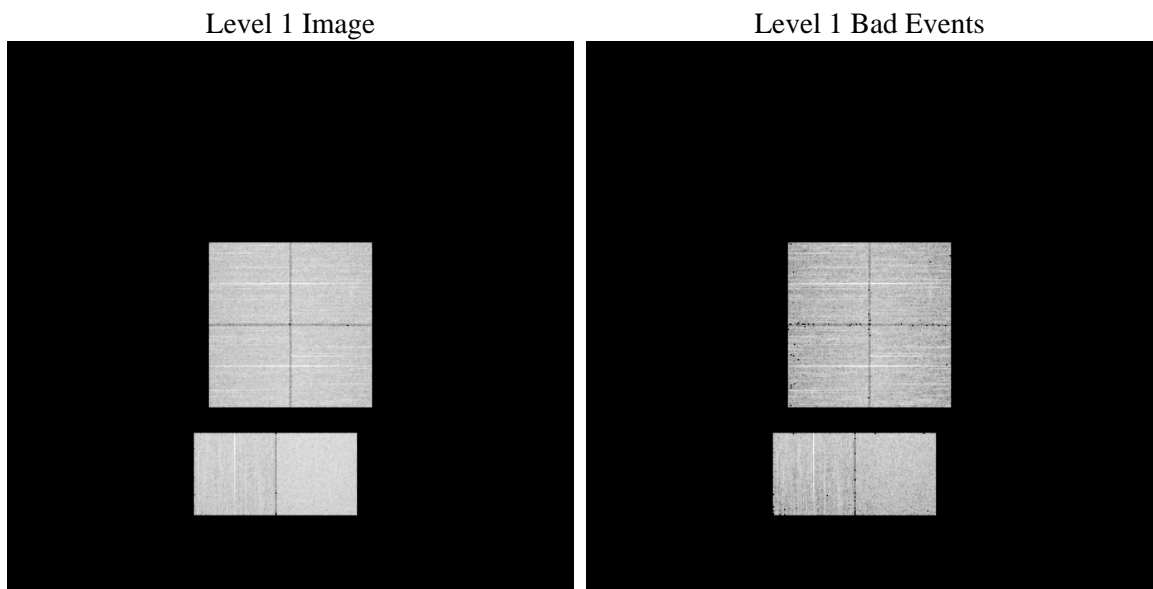
1 Front

seq_num	 	Sequence number
obs_id	54819	Observation id
title	ACIS-012367 diagnostics	Proposal title
observer	CHANDRA engineering request/realtime commanding	Principal investig
object	 	Source name
dtcycle	0	
cycle	P	events from which exps? Prim/Second/Both
ra_targ	0.0	Observer's specified target RA [deg]
dec_targ	0.0	Observer's specified target Dec [deg]
ra_nom	189.07751753666	Nominal RA [deg]
dec_nom	16.918993220074	Nominal Dec [deg]
roll_nom	105.6249227055	Nominal Roll [deg]
revision	1	Processing version of data
ontime	8287.04864645	Sum of GTIs [s]
livetime	8182.1130466271	Livetime [s]
ontime0	8183.2943264246	Sum of GTIs [s]
ontime1	8180.0123253465	Sum of GTIs [s]
ontime2	8183.2130823731	Sum of GTIs [s]
ontime3	8176.8943462372	Sum of GTIs [s]
ontime6	8189.6532863975	Sum of GTIs [s]
ontime7	8287.04864645	Sum of GTIs [s]
l2events	256482	Number of level 2 events

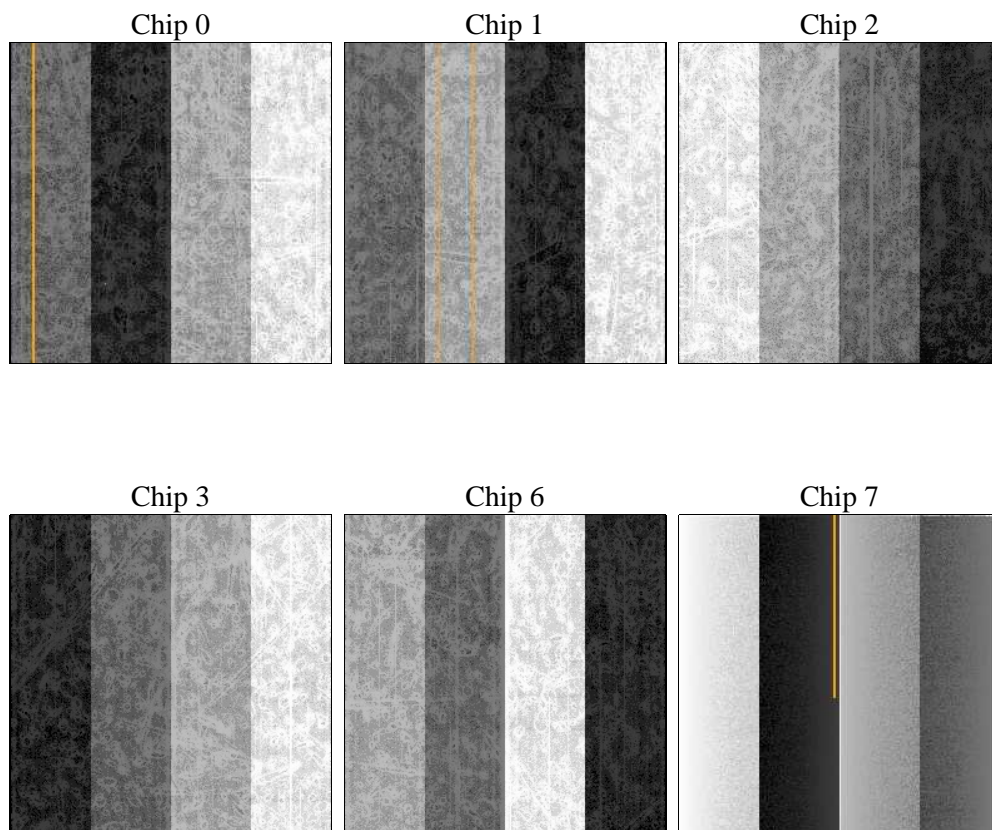
2 OBI

2.1 OBI

2.1.1 Images



2.1.2 Bias



2.1.3 Parameters

obi_num	1	Obi number	sched_exp_time	0.0	[s] Scheduled observation exposure time
ascdsver	8.4.3	Processing system revision	ontime	8287.04864645	Sum of GTIs [s]
caldbver	4.4.8	 	ontime0	8183.2943264246	Sum of GTIs [s]
date	2012-03-01T18:55:45	Date and time of file creation	ontime1	8180.0123253465	Sum of GTIs [s]
revision	1	Processing version of data	ontime2	8183.2130823731	Sum of GTIs [s]
			ontime3	8176.8943462372	Sum of GTIs [s]
			ontime6	8189.6532863975	Sum of GTIs [s]
			ontime7	8287.04864645	Sum of GTIs [s]
			l1events	583621	Number of level 1 events

2.1.4 Events

	ccd 0	ccd 1	ccd 2	ccd 3	ccd 6	ccd 7		ccd 0	ccd 1	ccd 2	ccd 3	ccd 6	ccd 7
level 1 events	89643	89778	90280	93889	95444	124587	grade 0 events	20488	18899	21377	21658	18880	10306
rejected events	49229	49160	50114	53288	53604	56743		22%	21%	23%	23%	19%	8%
rejected %	54%	54%	55%	56%	56%	45%	grade 1 events	97	79	113	133	95	102
								0%	0%	0%	0%	0%	0%
							grade 2 events	8107	9759	7227	7315	10526	15014
								9%	10%	8%	7%	11%	12%
							grade 3 events	2685	2492	2763	2711	2286	5675
								2%	2%	3%	2%	2%	4%
							grade 4 events	2627	2387	2698	2761	2334	5536
								2%	2%	2%	2%	2%	4%
							grade 5 events	2958	2887	2770	3115	2916	7768
								3%	3%	3%	3%	3%	6%
							grade 6 events	6507	7081	6101	6156	7814	31313
								7%	7%	6%	6%	8%	25%
							grade 7 events	46174	46194	47231	50040	50593	48873
								51%	51%	52%	53%	53%	39%

2.2 Compared Parameters

Parameter	Planned	Actual	Parameter	Planned	Actual
Instrument	ACIS	ACIS	Obspar format version number	7	7
Detector	ACIS-012367	ACIS-012367	Obspar file type	PREDICTED	ACTUAL
Grating	NONE	NONE	Obspar update status	NONE	UPDATED
Data mode	FAINT	FAINT	Number of optional ACIS chips dropped	0	0
Observation mode	SECONDARY	SECONDARY	On-chip summing requested	N	N
[deg] Pointing RA	0	189.077517536665	Subarray requested	NONE	NONE
[deg] Pointing Dec	0	16.91899322007381	Alternating exposures requested	N	N
[deg] Pointing Roll	0.0	105.6249227055013	[s] Primary exposure time	3.2	3.2
[mm] SIM focus pos	-1.429586	-1.428180813131781			
[mm] SIM defocus	0.1037507710433287	0.1051558262725154			
[mm] SIM translation stage pos	250.455976	250.466033080201			
[mm] SIM translation stage offset	0	-0.01005468664627074			
[s] Observation start time (MET)	446914228.393356	446914227.36836			
Observation start date	2012-02-29T14:50:28	2012-02-29T14:50:27			
[s] Observation end time (MET)	446924230.343886	446924229.31889			
Observation end date	2012-02-29T17:37:10	2012-02-29T17:37:09			
Read mode	TIMED	TIMED			

2.3 Star Slots

2.4 FID Slots

A Summary

A.1 Status

V&V Scientist	Jen Lauer
V&V Date (YYYY-MM-DD)	2012.03.01
V&V Edition	1
V&V Disposition and Status	OK
V&V Charge Time	8.28704864645

A.2 Comments