

V&V Reference Report

L2 ASCDS Version : 8.4.5

Observation 54568 - L2 Version 1
Chandra X-Ray Center

L2 Processing Date : Jun 7 2012

Contents

1	Front	2
2	OBI	3
2.1	OBI	3
2.1.1	Images	3
2.1.2	Bias	3
2.1.3	Parameters	4
2.1.4	Events	4
2.2	Compared Parameters	5
2.3	Star Slots	6
2.4	FID Slots	6
A	Summary	7
A.1	Status	7
A.2	Comments	7

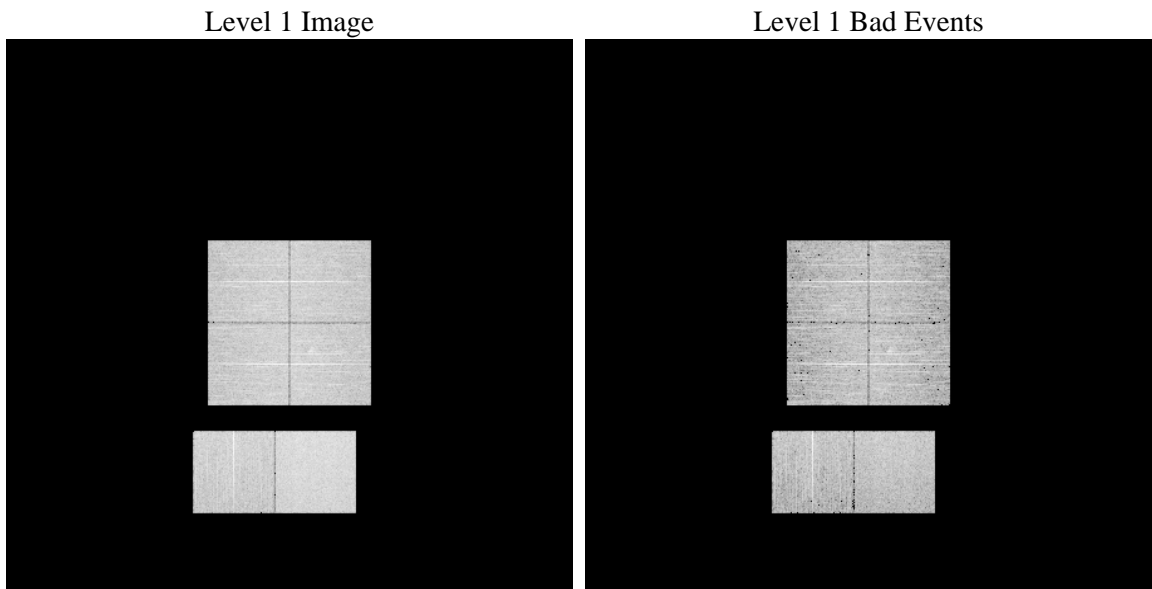
1 Front

seq_num	 	Sequence number
obs_id	54568	Observation id
title	ACIS-012367 diagnostics	Proposal title
observer	CHANDRA engineering request/realtime commanding	Principal investig
object	 	Source name
dtcycle	0	
cycle	P	events from which exps? Prim/Second/Both
ra_targ	0.0	Observer's specified target RA [deg]
dec_targ	0.0	Observer's specified target Dec [deg]
ra_nom	224.73202956786	Nominal RA [deg]
dec_nom	-37.709628865574	Nominal Dec [deg]
roll_nom	301.34981958885	Nominal Roll [deg]
revision	1	Processing version of data
ontime	8099.1999698877	Sum of GTIs [s]
livetime	7996.6430231163	Livetime [s]
ontime0	8099.1999698877	Sum of GTIs [s]
ontime1	8099.1999698877	Sum of GTIs [s]
ontime2	8099.1999698877	Sum of GTIs [s]
ontime3	8099.1999698877	Sum of GTIs [s]
ontime6	8099.1999698877	Sum of GTIs [s]
ontime7	8099.1999698877	Sum of GTIs [s]
l2events	246103	Number of level 2 events

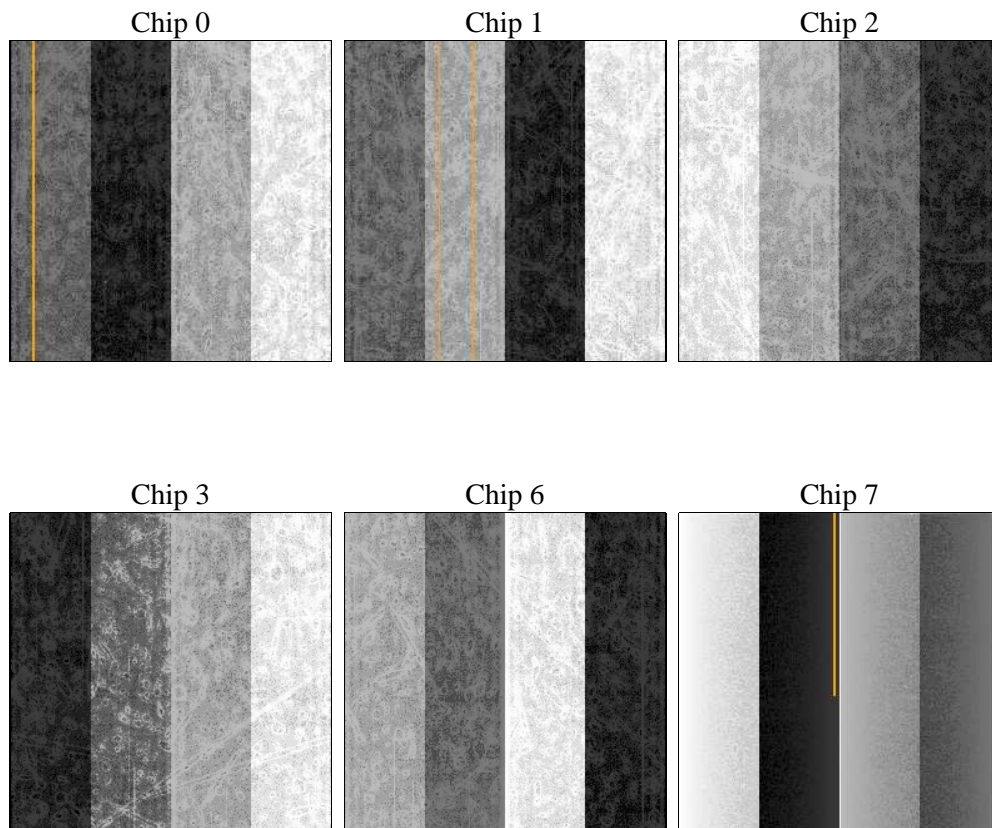
2 OBI

2.1 OBI

2.1.1 Images



2.1.2 Bias



2.1.3 Parameters

obi_num	0	Obi number	sched_exp_time	0.0	[s] Scheduled observation exposure time
ascdsver	8.4.5	Processing system revision	ontime	8099.1999698877	Sum of GTIs [s]
caldbver	4.4.10	 	ontime0	8099.1999698877	Sum of GTIs [s]
date	2012-06-07T22:17:08	Date and time of file creation	ontime1	8099.1999698877	Sum of GTIs [s]
revision	1	Processing version of data	ontime2	8099.1999698877	Sum of GTIs [s]
			ontime3	8099.1999698877	Sum of GTIs [s]
			ontime6	8099.1999698877	Sum of GTIs [s]
			ontime7	8099.1999698877	Sum of GTIs [s]
			l1events	556140	Number of level 1 events

2.1.4 Events

	ccd 0	ccd 1	ccd 2	ccd 3	ccd 6	ccd 7		ccd 0	ccd 1	ccd 2	ccd 3	ccd 6	ccd 7
level 1 events	86578	83578	86847	89089	90737	119311	grade 0 events	20835	20344	21240	21113	21015	10887
rejected events	47563	44800	48003	50611	50478	54014		24%	24%	24%	23%	23%	9%
rejected %	54%	53%	55%	56%	55%	45%	grade 1 events	132	111	125	125	103	111
								0%	0%	0%	0%	0%	0%
							grade 2 events	7539	7697	7103	7007	7651	14499
								8%	9%	8%	7%	8%	12%
							grade 3 events	2745	2571	2747	2681	2708	6007
								3%	3%	3%	3%	2%	5%
							grade 4 events	2682	2696	2714	2789	2729	6019
								3%	3%	3%	3%	3%	5%
							grade 5 events	3122	3103	2819	3460	3270	8234
								3%	3%	3%	3%	3%	6%
							grade 6 events	6147	6386	5924	5821	7071	29396
								7%	7%	6%	6%	7%	24%
							grade 7 events	43376	40670	44175	46093	46190	44158
								50%	48%	50%	51%	50%	37%

2.2 Compared Parameters

Parameter	Planned	Actual	Parameter	Planned	Actual
Instrument	ACIS	ACIS	Obspar format version number	7	7
Detector	ACIS-012367	ACIS-012367	Obspar file type	PREDICTED	ACTUAL
Grating	NONE	NONE	Obspar update status	OVERRIDE	OVERRIDE
Data mode	FAINT	FAINT	Number of optional ACIS chips dropped	0	0
Observation mode	SECONDARY	SECONDARY	On-chip summing requested	N	N
[deg] Pointing RA	0	224.7320295678591	Subarray requested	NONE	NONE
[deg] Pointing Dec	0	-37.70962886557374	Alternating exposures requested	N	N
[deg] Pointing Roll	0.0	301.3498195888476	[s] Primary exposure time	3.2	3.2
SIM focus pos (mm)	-1.4281808131	-1.4281808131			
[mm] SIM defocus	0.1051557500557434	0.1051557500557434			
SIM translation stage pos (mm)	250.4635187649	250.4635187649			
[mm] SIM translation stage offset	-0.007542945905271381	-0.007542945905271381			
[s] Observation start time (MET)	455338145.211764	455338145.211764			
Observation start date	2012-06-06T02:49:05	2012-06-06T02:49:05			
[s] Observation end time (MET)	455347693.778411	455347693.778411			
Observation end date	2012-06-06T05:28:14	2012-06-06T05:28:13			
Read mode	TIMED	TIMED			

2.3 Star Slots

2.4 FID Slots

A Summary

A.1 Status

V&V Scientist	Joy Nichols
V&V Date (YYYY-MM-DD)	2012.06.08
V&V Edition	1
V&V Disposition and Status	OK
V&V Charge Time	8.0991999698877

A.2 Comments