

V&V Reference Report

L2 ASCDS Version : 8.4.5

Observation 54543 - L2 Version 1
Chandra X-Ray Center

L2 Processing Date : Jun 17 2012

Contents

1	Front	2
2	OBI	3
2.1	OBI	3
2.1.1	Images	3
2.1.2	Bias	3
2.1.3	Parameters	4
2.1.4	Events	4
2.2	Compared Parameters	5
2.3	Star Slots	6
2.4	FID Slots	6
A	Summary	7
A.1	Status	7
A.2	Comments	7

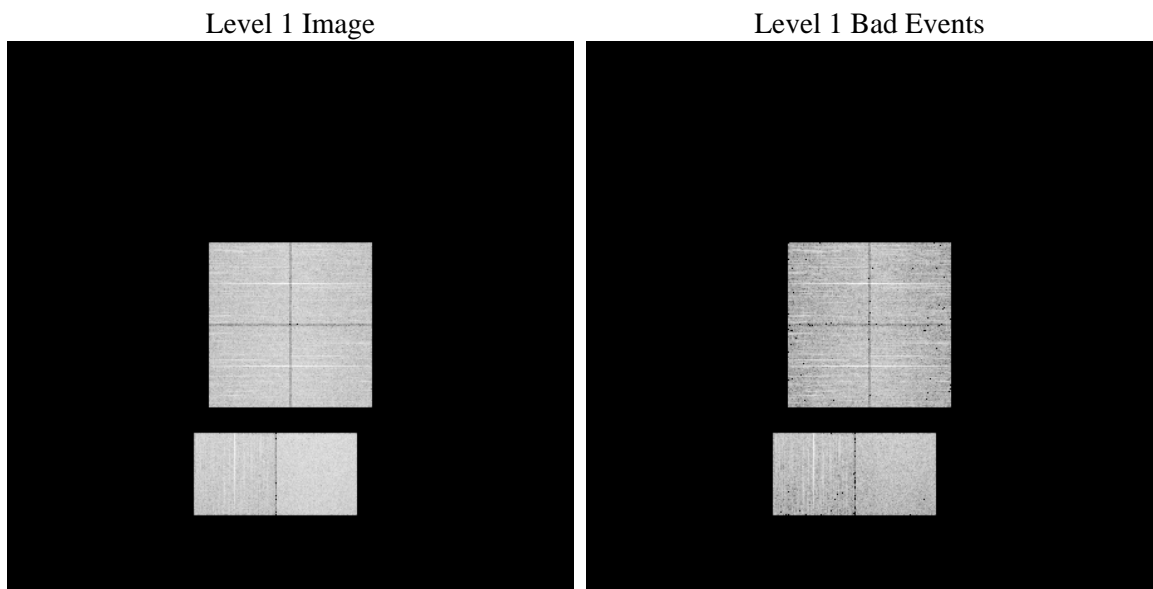
1 Front

seq_num	 	Sequence number
obs_id	54543	Observation id
title	ACIS-012367 diagnostics	Proposal title
observer	CHANDRA engineering request/realtime commanding	Principal investig
object	 	Source name
dtcycle	0	
cycle	P	events from which exps? Prim/Second/Both
ra_targ	0.0	Observer's specified target RA [deg]
dec_targ	0.0	Observer's specified target Dec [deg]
ra_nom	267.036340907	Nominal RA [deg]
dec_nom	-49.98336298754	Nominal Dec [deg]
roll_nom	2.6449673529746	Nominal Roll [deg]
revision	1	Processing version of data
ontime	8287.9999691844	Sum of GTIs [s]
livetime	8183.0523231401	Livetime [s]
ontime0	8287.9999691844	Sum of GTIs [s]
ontime1	8287.9999691844	Sum of GTIs [s]
ontime2	8287.9999691844	Sum of GTIs [s]
ontime3	8287.9999691844	Sum of GTIs [s]
ontime6	8287.9999691844	Sum of GTIs [s]
ontime7	8287.9999691844	Sum of GTIs [s]
l2events	247711	Number of level 2 events

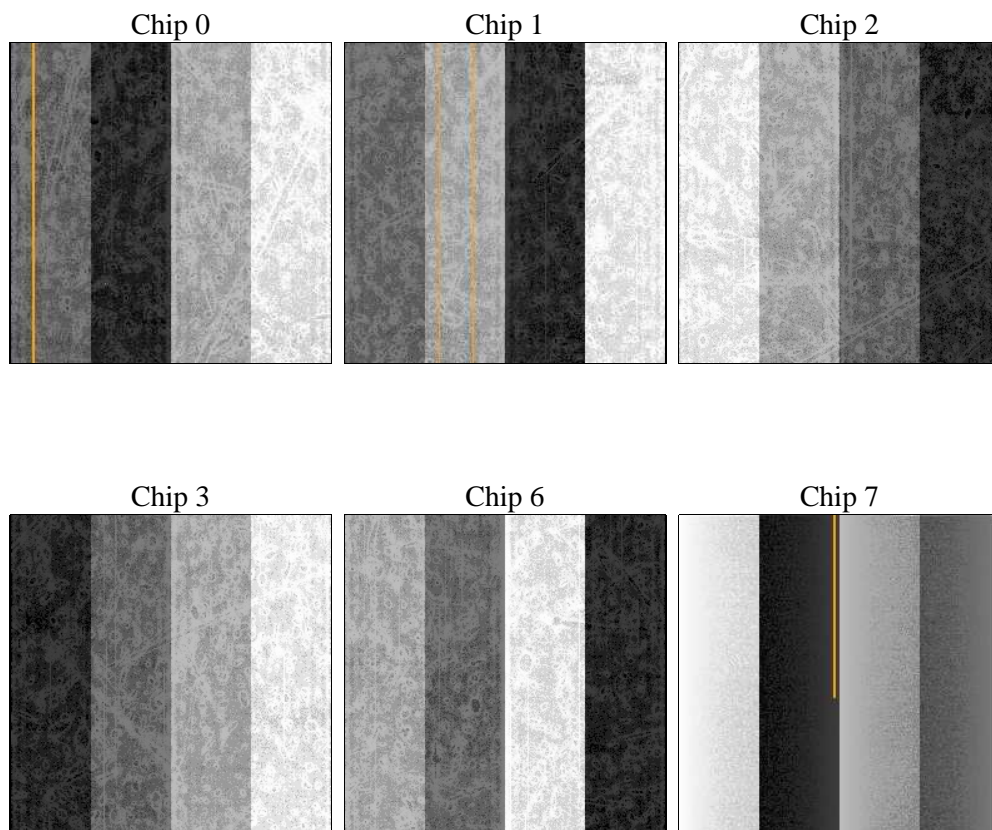
2 OBI

2.1 OBI

2.1.1 Images



2.1.2 Bias



2.1.3 Parameters

obi_num	0	Obi number	sched_exp_time	0.0	[s] Scheduled observation exposure time
ascdsver	8.4.5	Processing system revision	ontime	8287.9999691844	Sum of GTIs [s]
caldbver	4.4.10	 	ontime0	8287.9999691844	Sum of GTIs [s]
date	2012-06-17T17:44:45	Date and time of file creation	ontime1	8287.9999691844	Sum of GTIs [s]
revision	1	Processing version of data	ontime2	8287.9999691844	Sum of GTIs [s]
			ontime3	8287.9999691844	Sum of GTIs [s]
			ontime6	8287.9999691844	Sum of GTIs [s]
			ontime7	8287.9999691844	Sum of GTIs [s]
			l1events	548621	Number of level 1 events

2.1.4 Events

	ccd 0	ccd 1	ccd 2	ccd 3	ccd 6	ccd 7		ccd 0	ccd 1	ccd 2	ccd 3	ccd 6	ccd 7
level 1 events	84111	85154	85919	87291	89414	116732	grade 0 events	20300	20156	21089	21210	20661	10504
rejected events	44872	45801	46599	47990	48788	52242		24%	23%	24%	24%	23%	8%
rejected %	53%	53%	54%	54%	54%	44%	grade 1 events	120	93	106	133	103	103
								0%	0%	0%	0%	0%	0%
							grade 2 events	7508	7663	6993	6957	7577	13928
								8%	8%	8%	7%	8%	11%
							grade 3 events	2761	2683	2773	2663	2614	5595
								3%	3%	3%	3%	2%	4%
							grade 4 events	2631	2617	2707	2706	2784	5582
								3%	3%	3%	3%	3%	4%
							grade 5 events	3095	3141	2877	3364	3261	8094
								3%	3%	3%	3%	3%	6%
							grade 6 events	6039	6234	5758	5765	7004	28881
								7%	7%	6%	6%	7%	24%
							grade 7 events	41657	42567	43616	44493	45410	44045
								49%	49%	50%	50%	50%	37%

2.2 Compared Parameters

Parameter	Planned	Actual	Parameter	Planned	Actual
Instrument	ACIS	ACIS	Obspar format version number	7	7
Detector	ACIS-012367	ACIS-012367	Obspar file type	PREDICTED	ACTUAL
Grating	NONE	NONE	Obspar update status	NONE	UPDATED
Data mode	FAINT	FAINT	Number of optional ACIS chips dropped	0	0
Observation mode	SECONDARY	SECONDARY	On-chip summing requested	N	N
[deg] Pointing RA	0	267.0363409070007	Subarray requested	NONE	NONE
[deg] Pointing Dec	0	-49.98336298753966	Alternating exposures requested	N	N
[deg] Pointing Roll	0.0	2.644967352974605	[s] Primary exposure time	3.2	3.2
[mm] SIM focus pos	-1.429586	-1.428180813131781			
[mm] SIM defocus	0.1037507710433287	0.1051558262725154			
[mm] SIM translation stage pos	250.455976	250.466033080201			
[mm] SIM translation stage offset	0	-0.01005468664627074			
[s] Observation start time (MET)	456281774.612012	456281773.58701			
Observation start date	2012-06-17T00:56:15	2012-06-17T00:56:13			
[s] Observation end time (MET)	456293353.012629	456293351.98763			
Observation end date	2012-06-17T04:09:13	2012-06-17T04:09:11			
Read mode	TIMED	TIMED			

2.3 Star Slots

2.4 FID Slots

A Summary

A.1 Status

V&V Scientist	Jen Lauer
V&V Date (YYYY-MM-DD)	2012.06.17
V&V Edition	1
V&V Disposition and Status	OK
V&V Charge Time	8.2879999691844

A.2 Comments